



## Full wwPDB EM Validation Report ⓘ

Dec 8, 2025 – 01:44 PM JST

PDB ID : 9L0X / pdb\_00009l0x  
EMDB ID : EMD-62727  
Title : Cryo-EM structure of E.coli transcription initiation complex with Escherichia phage Mu late transcription activator C  
Authors : Lin, W.; Feng, Y.  
Deposited on : 2024-12-13  
Resolution : 3.22 Å(reported)

This is a Full wwPDB EM Validation Report for a publicly released PDB entry.

We welcome your comments at [validation@mail.wwpdb.org](mailto:validation@mail.wwpdb.org)

A user guide is available at

<https://www.wwpdb.org/validation/2017/EMValidationReportHelp>  
with specific help available everywhere you see the ⓘ symbol.

The types of validation reports are described at

<http://www.wwpdb.org/validation/2017/FAQs#types>.

---

The following versions of software and data (see [references ⓘ](#)) were used in the production of this report:

EMDB validation analysis : 0.0.1.dev129  
MolProbity : 4-5-2 with Phenix2.0  
Percentile statistics : 20231227.v01 (using entries in the PDB archive December 27th 2023)  
EM percentile statistics : 202505.v01 (Using data in the EMDB archive up until May 2025)  
MapQ : 1.9.13  
Ideal geometry (proteins) : Engh & Huber (2001)  
Ideal geometry (DNA, RNA) : Parkinson et al. (1996)  
Validation Pipeline (wwPDB-VP) : 2.47

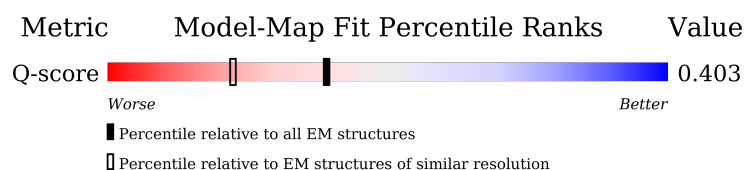
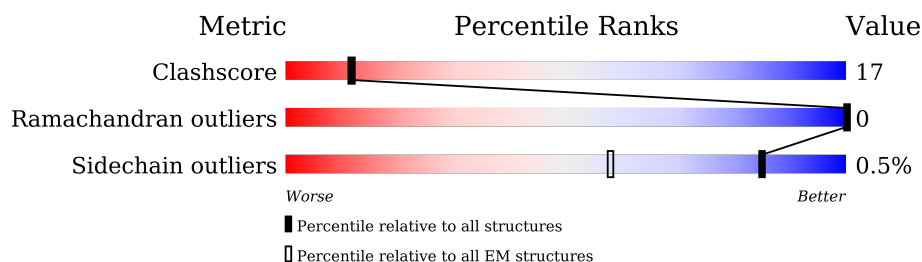
# 1 Overall quality at a glance

The following experimental techniques were used to determine the structure:

*ELECTRON MICROSCOPY*

The reported resolution of this entry is 3.22 Å.

Percentile scores (ranging between 0-100) for global validation metrics of the entry are shown in the following graphic. The table shows the number of entries on which the scores are based.





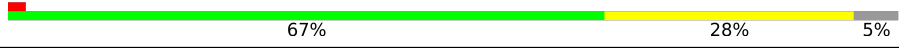
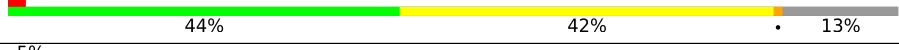


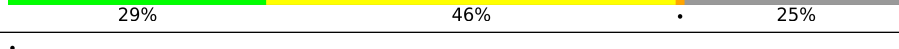
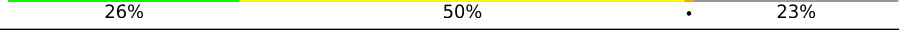
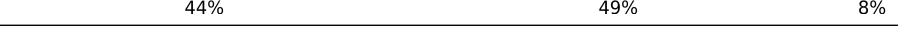
Metric	Whole archive (#Entries)	EM structures (#Entries)	Similar EM resolution (#Entries, resolution range(Å))
Clashscore	210492	15764	-
Ramachandran outliers	207382	16835	-
Sidechain outliers	206894	16415	-
Q-score	-	25397	14612 ( 2.72 - 3.72 )

The table below summarises the geometric issues observed across the polymeric chains and their fit to the map. The red, orange, yellow and green segments of the bar indicate the fraction of residues that contain outliers for  $\geq 3$ , 2, 1 and 0 types of geometric quality criteria respectively. A grey segment represents the fraction of residues that are not modelled. The numeric value for each fraction is indicated below the corresponding segment, with a dot representing fractions  $\leq 5\%$ . The upper red bar (where present) indicates the fraction of residues that have poor fit to the EM map (all-atom inclusion  $< 40\%$ ). The numeric value is given above the bar.

Mol	Chain	Length	Quality of chain
1	1	78	
2	2	78	
3	A	329	
3	B	329	

*Continued on next page...*

*Continued from previous page...*

Mol	Chain	Length	Quality of chain
3	P	329	
4	C	1342	
5	D	1407	
6	E	91	
7	F	613	
8	G	140	
8	H	140	
8	I	140	
8	J	140	

## 2 Entry composition [i](#)

There are 8 unique types of molecules in this entry. The entry contains 36519 atoms, of which 0 are hydrogens and 0 are deuteriums.

In the tables below, the AltConf column contains the number of residues with at least one atom in alternate conformation and the Trace column contains the number of residues modelled with at most 2 atoms.

- Molecule 1 is a DNA chain called DNA (78-MER).

Mol	Chain	Residues	Atoms					AltConf	Trace
1	1	73	Total	C	N	O	P	0	0
			1490	712	269	436	73		

- Molecule 2 is a DNA chain called DNA (78-MER).

Mol	Chain	Residues	Atoms					AltConf	Trace
2	2	73	Total	C	N	O	P	0	0
			1516	721	284	438	73		

- Molecule 3 is a protein called DNA-directed RNA polymerase subunit alpha.

Mol	Chain	Residues	Atoms					AltConf	Trace
3	A	230	Total	C	N	O	S	0	0
			1786	1112	317	351	6		
3	B	228	Total	C	N	O	S	0	0
			1767	1100	312	349	6		
3	P	71	Total	C	N	O	S	0	0
			554	350	96	106	2		

- Molecule 4 is a protein called DNA-directed RNA polymerase subunit beta.

Mol	Chain	Residues	Atoms					AltConf	Trace
4	C	1340	Total	C	N	O	S	0	0
			10560	6627	1840	2050	43		

There is a discrepancy between the modelled and reference sequences:

Chain	Residue	Modelled	Actual	Comment	Reference
C	516	VAL	ASP	conflict	UNP P0A8V2

- Molecule 5 is a protein called DNA-directed RNA polymerase subunit beta'.

Mol	Chain	Residues	Atoms					AltConf	Trace
5	D	1334	Total	C	N	O	S	0	0
			10369	6514	1849	1956	50		

- Molecule 6 is a protein called DNA-directed RNA polymerase subunit omega.

Mol	Chain	Residues	Atoms					AltConf	Trace
6	E	79	Total	C	N	O	S	0	0
			627	382	118	126	1		

- Molecule 7 is a protein called RNA polymerase sigma factor RpoD.

Mol	Chain	Residues	Atoms					AltConf	Trace
7	F	496	Total	C	N	O	S	0	0
			3977	2484	707	764	22		

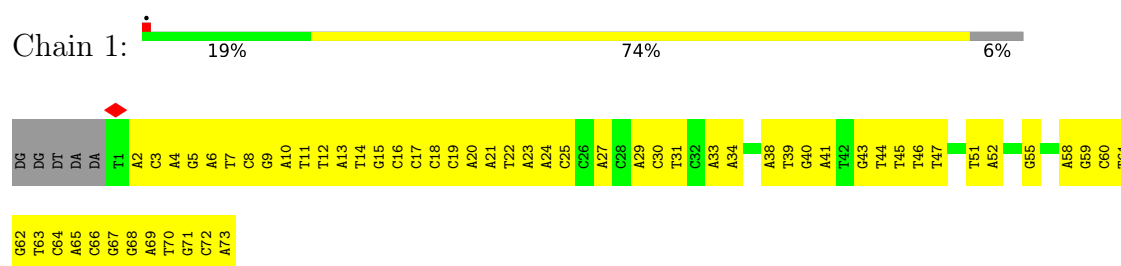
- Molecule 8 is a protein called Late transcription activator C.

Mol	Chain	Residues	Atoms					AltConf	Trace
8	G	124	Total	C	N	O	S	0	0
			1026	643	195	184	4		
8	H	105	Total	C	N	O	S	0	0
			879	548	173	154	4		
8	I	108	Total	C	N	O	S	0	0
			894	558	173	159	4		
8	J	129	Total	C	N	O	S	0	0
			1074	671	208	190	5		

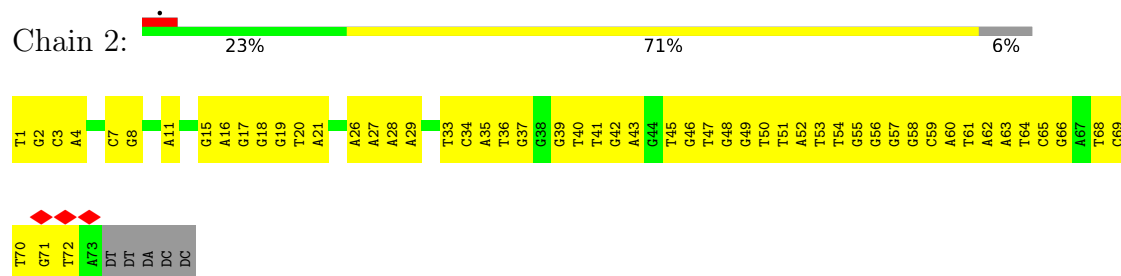
### 3 Residue-property plots [i](#)

These plots are drawn for all protein, RNA, DNA and oligosaccharide chains in the entry. The first graphic for a chain summarises the proportions of the various outlier classes displayed in the second graphic. The second graphic shows the sequence view annotated by issues in geometry and atom inclusion in map density. Residues are color-coded according to the number of geometric quality criteria for which they contain at least one outlier: green = 0, yellow = 1, orange = 2 and red = 3 or more. A red diamond above a residue indicates a poor fit to the EM map for this residue (all-atom inclusion < 40%). Stretches of 2 or more consecutive residues without any outlier are shown as a green connector. Residues present in the sample, but not in the model, are shown in grey.

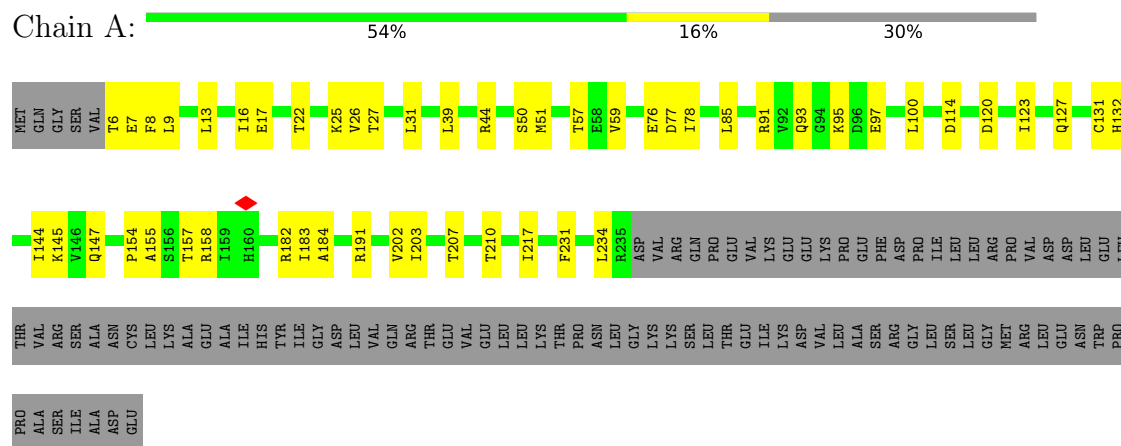
#### • Molecule 1: DNA (78-MER)



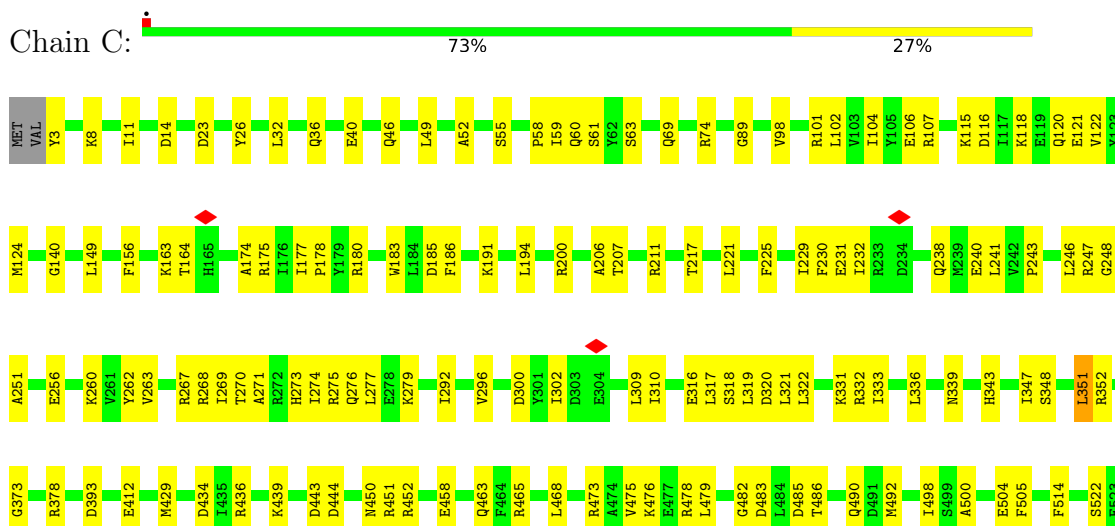
#### • Molecule 2: DNA (78-MER)



#### • Molecule 3: DNA-directed RNA polymerase subunit alpha



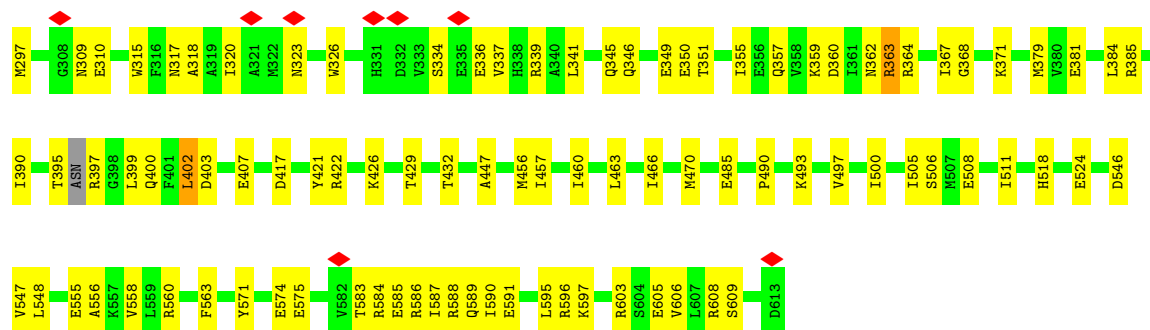
#### • Molecule 3: DNA-directed RNA polymerase subunit alpha



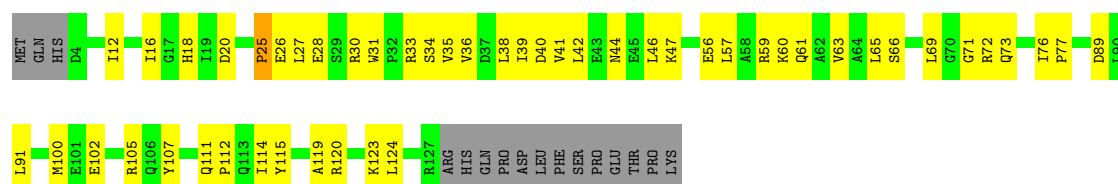




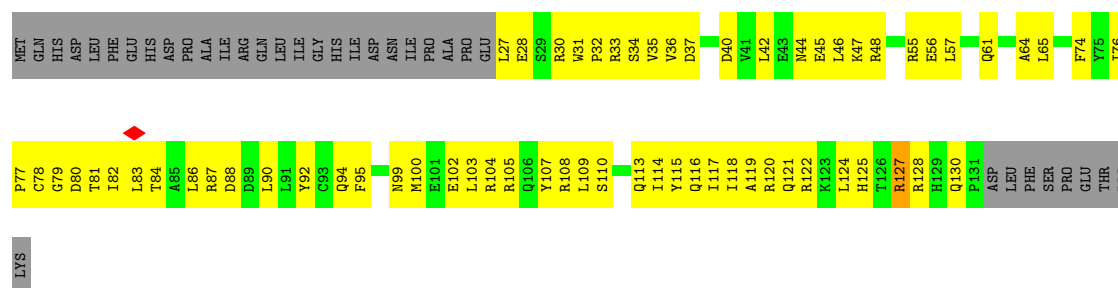




• Molecule 8: Late transcription activator C



• Molecule 8: Late transcription activator C



• Molecule 8: Late transcription activator C



• Molecule 8: Late transcription activator C



H1	Q2	H3	D4	L5	F6	E7	P10	A11	I12	R13	Q14	L15	I16	I19	D20	N21	I22	P23	A24	L27	D40	V41	L42	E43	N44	E45	L46	K47	R48	N53	P54	R55	E56	L57	A58	R59	K60	Q61	A62	V63	G70	G71	R72	Q73	F74	Y75	I76	P77	C78	G79	D80	T81	I82
L83	L86	D89	L90	L91	Y92	F95	N96	G97	R98	N99	M100	E101	E102	L103	R104	R105	Q106	Y107	R108	I117	R120	Q121	L124	H125	T126	R127	R128	H129	GLN	PRO	ASP	LEU	PHE	SER	PRO	GLU	THR	PRO	LYS														

## 4 Experimental information

Property	Value	Source
EM reconstruction method	SINGLE PARTICLE	Depositor
Imposed symmetry	POINT, Not provided	
Number of particles used	217572	Depositor
Resolution determination method	FSC 0.143 CUT-OFF	Depositor
CTF correction method	NONE	Depositor
Microscope	TFS KRIOS	Depositor
Voltage (kV)	300	Depositor
Electron dose ( $e^-/\text{\AA}^2$ )	52	Depositor
Minimum defocus (nm)	1000	Depositor
Maximum defocus (nm)	2000	Depositor
Magnification	Not provided	
Image detector	GATAN K3 (6k x 4k)	Depositor
Maximum map value	0.568	Depositor
Minimum map value	-0.278	Depositor
Average map value	0.001	Depositor
Map value standard deviation	0.022	Depositor
Recommended contour level	0.05	Depositor
Map size ( $\text{\AA}$ )	307.2, 307.2, 307.2	wwPDB
Map dimensions	256, 256, 256	wwPDB
Map angles ( $^\circ$ )	90.0, 90.0, 90.0	wwPDB
Pixel spacing ( $\text{\AA}$ )	1.2, 1.2, 1.2	Depositor

## 5 Model quality

### 5.1 Standard geometry

The Z score for a bond length (or angle) is the number of standard deviations the observed value is removed from the expected value. A bond length (or angle) with  $|Z| > 5$  is considered an outlier worth inspection. RMSZ is the root-mean-square of all Z scores of the bond lengths (or angles).

Mol	Chain	Bond lengths		Bond angles	
		RMSZ	# Z  >5	RMSZ	# Z  >5
1	1	0.32	0/1670	0.52	0/2573
2	2	0.30	0/1704	0.49	0/2633
3	A	0.20	0/1808	0.33	0/2450
3	B	0.16	0/1789	0.33	0/2425
3	P	0.18	0/561	0.48	0/762
4	C	0.20	0/10728	0.35	0/14474
5	D	0.19	0/10521	0.37	1/14196 (0.0%)
6	E	0.20	0/629	0.47	0/847
7	F	0.17	0/4028	0.38	0/5421
8	G	0.21	0/1045	0.53	1/1412 (0.1%)
8	H	0.51	0/894	0.72	0/1204
8	I	0.61	0/910	0.94	0/1228
8	J	0.49	0/1095	0.74	0/1478
All	All	0.25	0/37382	0.43	2/51103 (0.0%)

There are no bond length outliers.

All (2) bond angle outliers are listed below:

Mol	Chain	Res	Type	Atoms	Z	Observed(°)	Ideal(°)
5	D	124	ILE	N-CA-C	-6.99	107.07	113.71
8	G	25	PRO	CA-N-CD	-5.15	104.79	112.00

There are no chirality outliers.

There are no planarity outliers.

### 5.2 Too-close contacts

In the following table, the Non-H and H(model) columns list the number of non-hydrogen atoms and hydrogen atoms in the chain respectively. The H(added) column lists the number of hydrogen atoms added and optimized by MolProbity. The Clashes column lists the number of clashes within the asymmetric unit, whereas Symm-Clashes lists symmetry-related clashes.

Mol	Chain	Non-H	H(model)	H(added)	Clashes	Symm-Clashes
1	1	1490	0	824	99	0
2	2	1516	0	825	125	0
3	A	1786	0	1813	34	0
3	B	1767	0	1789	48	0
3	P	554	0	573	15	0
4	C	10560	0	10573	265	0
5	D	10369	0	10590	283	0
6	E	627	0	634	29	0
7	F	3977	0	4008	127	0
8	G	1026	0	1032	68	0
8	H	879	0	893	92	0
8	I	894	0	900	115	0
8	J	1074	0	1079	88	0
All	All	36519	0	35533	1235	0

The all-atom clashscore is defined as the number of clashes found per 1000 atoms (including hydrogen atoms). The all-atom clashscore for this structure is 17.

All (1235) close contacts within the same asymmetric unit are listed below, sorted by their clash magnitude.

Atom-1	Atom-2	Interatomic distance (Å)	Clash overlap (Å)
2:2:71:DG:C2'	2:2:72:DT:H72	1.62	1.27
2:2:39:DG:C2'	2:2:40:DT:H71	1.67	1.24
8:G:73:GLN:HG3	8:I:111:GLN:OE1	1.40	1.19
2:2:71:DG:H2'	2:2:72:DT:C7	1.76	1.15
8:G:77:PRO:HG3	8:H:32:PRO:HB3	1.26	1.13
1:1:46:DT:C6	1:1:47:DT:H72	1.84	1.11
2:2:39:DG:H2''	2:2:40:DT:C7	1.79	1.11
2:2:71:DG:C2'	2:2:72:DT:C7	2.27	1.07
2:2:71:DG:H2'	2:2:72:DT:H72	1.10	1.04
2:2:39:DG:H2''	2:2:40:DT:H71	1.05	1.00
2:2:69:DC:H2'	2:2:70:DT:H72	1.43	1.00
2:2:45:DT:H73	7:F:588:ARG:HD3	1.42	0.98
2:2:69:DC:C2'	2:2:70:DT:H72	1.96	0.95
1:1:6:DA:H2''	1:1:7:DT:C7	1.98	0.93
1:1:30:DC:H2'	1:1:31:DT:H71	1.51	0.93
2:2:39:DG:C2'	2:2:40:DT:C7	2.40	0.92
8:H:92:TYR:HE1	8:H:122:ARG:HD2	1.34	0.92
2:2:35:DA:H2'	2:2:36:DT:H72	1.51	0.92
1:1:15:DG:H2''	1:1:16:DC:C5	2.05	0.91
1:1:6:DA:H2''	1:1:7:DT:H71	1.53	0.91
1:1:16:DC:H2''	1:1:17:DC:C5	2.06	0.90

*Continued on next page...*

*Continued from previous page...*

Atom-1	Atom-2	Interatomic distance (Å)	Clash overlap (Å)
1:1:30:DC:C2'	1:1:31:DT:H71	2.03	0.88
2:2:40:DT:H2'	2:2:41:DT:H72	1.52	0.87
2:2:57:DG:H3'	8:I:113:GLN:HG3	1.52	0.87
8:G:73:GLN:HG3	8:I:111:GLN:CD	1.99	0.87
8:J:6:PHE:HB3	8:J:13:ARG:HB2	1.56	0.87
2:2:69:DC:C2'	2:2:70:DT:C7	2.53	0.87
3:A:44:ARG:HA	3:A:183:ILE:HD11	1.56	0.87
2:2:57:DG:H2''	2:2:58:DG:C8	2.10	0.87
8:G:73:GLN:CG	8:I:111:GLN:OE1	2.23	0.86
4:C:1315:MET:HG3	4:C:1317:PRO:HD3	1.57	0.85
2:2:69:DC:H2'	2:2:70:DT:C7	2.06	0.84
2:2:71:DG:H2''	2:2:72:DT:C7	2.04	0.84
2:2:63:DA:H2'	2:2:64:DT:C7	2.08	0.82
8:I:31:TRP:HB3	8:I:33:ARG:HG3	1.59	0.81
8:H:78:CYS:SG	8:H:79:GLY:N	2.54	0.80
8:I:92:TYR:CD1	8:I:121:GLN:HB2	2.17	0.80
5:D:1278:GLU:OE1	5:D:1279:GLN:N	2.15	0.80
8:J:101:GLU:HB3	8:J:104:ARG:HH21	1.47	0.80
2:2:39:DG:H2'	2:2:40:DT:H71	1.64	0.78
2:2:45:DT:H73	7:F:588:ARG:CD	2.13	0.78
8:G:77:PRO:HG3	8:H:32:PRO:CB	2.11	0.78
1:1:16:DC:H2''	1:1:17:DC:H5	1.49	0.77
5:D:1177:ILE:HB	5:D:1186:TYR:HB3	1.67	0.76
5:D:789:LYS:HD2	5:D:931:THR:HG23	1.67	0.76
4:C:276:GLN:HA	4:C:279:LYS:HD3	1.67	0.75
5:D:137:ARG:HD2	7:F:93:ARG:HH22	1.50	0.75
5:D:872:LEU:HD22	5:D:877:VAL:HG11	1.68	0.75
1:1:10:DA:H2'	1:1:11:DT:H71	1.68	0.75
8:I:104:ARG:HB3	8:I:105:ARG:HH12	1.52	0.75
5:D:702:GLN:HG3	5:D:703:THR:HG23	1.66	0.75
2:2:60:DA:H8	2:2:60:DA:H5'	1.50	0.75
5:D:739:GLN:HB2	5:D:744:ARG:HG2	1.67	0.75
5:D:41:PRO:HA	5:D:273:ILE:HD11	1.70	0.74
8:H:80:ASP:HB3	8:H:83:LEU:HB2	1.70	0.74
3:A:95:LYS:NZ	3:A:120:ASP:OD2	2.21	0.73
1:1:18:DC:H2''	1:1:19:DC:C6	2.24	0.73
8:G:124:LEU:HD11	8:H:33:ARG:HB3	1.71	0.73
4:C:633:LEU:HB3	4:C:644:LEU:HD12	1.71	0.73
8:I:44:ASN:HB2	8:J:4:ASP:HB3	1.70	0.73
1:1:10:DA:H2'	1:1:11:DT:C7	2.18	0.73
7:F:587:ILE:HA	7:F:590:ILE:HD12	1.70	0.73

*Continued on next page...*

*Continued from previous page...*

Atom-1	Atom-2	Interatomic distance (Å)	Clash overlap (Å)
4:C:1132:LEU:HD22	4:C:1177:ARG:HH12	1.53	0.73
7:F:381:GLU:HA	7:F:384:LEU:HD13	1.69	0.73
8:I:48:ARG:HG3	8:J:13:ARG:NH1	2.04	0.72
1:1:23:DA:H2''	1:1:24:DA:C8	2.24	0.72
8:G:120:ARG:NH2	8:H:32:PRO:HD2	2.05	0.72
3:B:91:ARG:HG3	3:B:210:THR:HB	1.69	0.72
4:C:1226:THR:HG22	5:D:638:SER:HB3	1.70	0.72
8:I:44:ASN:CG	8:J:5:LEU:HB3	2.15	0.72
4:C:1072:ASN:HD21	4:C:1230:MET:HE1	1.54	0.72
5:D:1189:MET:HE2	5:D:1189:MET:HA	1.71	0.72
8:H:92:TYR:CE1	8:H:122:ARG:HD2	2.21	0.72
3:B:75:GLN:HG3	3:B:76:GLU:HG3	1.73	0.71
8:I:103:LEU:HA	8:I:106:GLN:HG3	1.71	0.71
3:A:17:GLU:HB3	3:A:25:LYS:HB2	1.72	0.71
2:2:60:DA:H5'	2:2:60:DA:C8	2.25	0.71
4:C:98:VAL:HG11	4:C:124:MET:HE2	1.73	0.71
2:2:45:DT:H71	7:F:588:ARG:HE	1.55	0.71
8:H:27:LEU:HB3	8:H:31:TRP:NE1	2.05	0.71
8:H:94:GLN:O	8:H:99:ASN:ND2	2.23	0.71
3:B:95:LYS:HE2	3:B:97:GLU:H	1.54	0.71
2:2:39:DG:H2''	2:2:40:DT:C5	2.26	0.70
1:1:5:DG:H2''	1:1:6:DA:H8	1.55	0.70
2:2:52:DA:H2'	2:2:53:DT:O4'	1.91	0.70
4:C:3:TYR:O	4:C:8:LYS:NZ	2.22	0.70
4:C:498:ILE:HD12	4:C:498:ILE:H	1.55	0.70
5:D:128:LEU:O	5:D:157:GLN:NE2	2.24	0.70
8:H:127:ARG:HH21	8:H:128:ARG:HE	1.38	0.70
1:1:29:DA:H2''	1:1:30:DC:C5	2.27	0.70
4:C:633:LEU:HD12	4:C:644:LEU:HB3	1.74	0.70
5:D:233:LYS:HG2	5:D:235:GLU:HG2	1.74	0.69
2:2:42:DG:N2	2:2:43:DA:C2	2.60	0.69
2:2:48:DG:OP1	8:I:29:SER:HB2	1.91	0.69
3:B:182:ARG:NH2	3:B:204:GLU:OE2	2.25	0.69
7:F:399:LEU:HB2	7:F:447:ALA:HB2	1.74	0.69
2:2:63:DA:H2'	2:2:64:DT:H71	1.75	0.69
4:C:808:ASN:H	5:D:633:ALA:HB2	1.57	0.69
8:G:46:LEU:HD21	8:G:61:GLN:HE22	1.57	0.69
2:2:35:DA:H2'	2:2:36:DT:C7	2.22	0.68
3:B:127:GLN:N	3:B:127:GLN:OE1	2.26	0.68
4:C:1245:ALA:HB2	5:D:372:MET:HG2	1.75	0.68
5:D:130:MET:HB3	5:D:157:GLN:HE21	1.58	0.68

*Continued on next page...*



*Continued from previous page...*

Atom-1	Atom-2	Interatomic distance (Å)	Clash overlap (Å)
5:D:275:ARG:HH11	5:D:302:ALA:HB2	1.59	0.68
1:1:40:DG:H2''	1:1:41:DA:C8	2.29	0.68
6:E:2:ALA:N	6:E:5:THR:O	2.27	0.68
7:F:119:ILE:HG21	7:F:379:MET:HB2	1.76	0.68
7:F:122:ARG:HE	7:F:371:LYS:HZ1	1.42	0.68
8:G:28:GLU:OE1	8:G:28:GLU:N	2.20	0.68
2:2:11:DA:N1	5:D:790:THR:OG1	2.28	0.67
8:I:121:GLN:HA	8:I:124:LEU:HD12	1.76	0.67
1:1:5:DG:H2''	1:1:6:DA:C8	2.30	0.67
5:D:262:THR:OG1	5:D:266:ASN:ND2	2.27	0.67
2:2:34:DC:H4'	2:2:35:DA:OP1	1.94	0.67
4:C:546:GLU:OE1	4:C:546:GLU:N	2.28	0.67
8:I:28:GLU:HA	8:I:31:TRP:HB2	1.77	0.67
4:C:1125:GLY:HA3	4:C:1179:GLY:HA2	1.75	0.67
7:F:254:GLU:HA	7:F:257:LYS:HD2	1.77	0.67
2:2:39:DG:H2'	2:2:40:DT:C7	2.23	0.66
8:I:92:TYR:OH	8:I:122:ARG:HA	1.95	0.66
8:H:92:TYR:OH	8:H:122:ARG:HA	1.94	0.66
5:D:1040:MET:HB3	5:D:1046:ILE:HD13	1.76	0.66
1:1:6:DA:H2''	1:1:7:DT:C5	2.31	0.66
5:D:1219:ASP:OD1	5:D:1222:ARG:NH2	2.28	0.66
4:C:1250:SER:HB3	7:F:524:GLU:HG3	1.77	0.66
5:D:29:MET:HE3	5:D:29:MET:H	1.60	0.66
4:C:1289:GLU:HB3	4:C:1315:MET:HE1	1.76	0.65
8:H:27:LEU:HB3	8:H:31:TRP:CE2	2.30	0.65
4:C:811:ASN:O	4:C:1099:ASN:ND2	2.28	0.65
5:D:1207:GLY:O	5:D:1224:ARG:NH2	2.30	0.65
8:G:12:ILE:HD12	8:H:83:LEU:HD13	1.79	0.65
8:I:110:SER:O	8:I:114:ILE:HG12	1.95	0.65
4:C:14:ASP:H	4:C:1157:GLN:HE22	1.44	0.65
8:I:48:ARG:HD2	8:J:13:ARG:HG3	1.78	0.65
8:J:83:LEU:HA	8:J:86:LEU:HB2	1.79	0.65
5:D:30:ILE:HD11	5:D:243:PRO:HD3	1.78	0.65
8:H:124:LEU:O	8:H:127:ARG:HG3	1.96	0.65
5:D:741:ALA:O	5:D:762:ASN:ND2	2.29	0.65
4:C:588:GLU:HG3	4:C:605:TYR:HB3	1.79	0.65
2:2:45:DT:C7	7:F:588:ARG:HE	2.09	0.65
5:D:799:ARG:NH1	5:D:1146:GLU:OE1	2.30	0.65
3:A:93:GLN:N	3:A:93:GLN:OE1	2.30	0.64
2:2:69:DC:H2''	2:2:70:DT:C7	2.27	0.64
4:C:560:PRO:HB2	5:D:776:THR:HG21	1.79	0.64

*Continued on next page...*

*Continued from previous page...*

Atom-1	Atom-2	Interatomic distance (Å)	Clash overlap (Å)
8:H:110:SER:HB3	8:J:71:GLY:HA2	1.79	0.64
1:1:46:DT:C5	1:1:47:DT:H72	2.32	0.64
1:1:33:DA:H2'	1:1:34:DA:C8	2.33	0.64
5:D:54:ASP:N	5:D:58:CYS:SG	2.71	0.64
2:2:3:DC:H2'	2:2:4:DA:C8	2.33	0.64
3:A:127:GLN:OE1	3:A:127:GLN:N	2.24	0.64
4:C:46:GLN:OE1	4:C:46:GLN:N	2.30	0.64
5:D:201:LEU:HB2	5:D:221:ILE:HD11	1.80	0.64
5:D:1203:ARG:NH1	5:D:1205:GLU:OE2	2.28	0.64
8:G:120:ARG:HH12	8:H:31:TRP:CG	2.16	0.64
1:1:27:DA:N6	7:F:585:GLU:HG3	2.13	0.64
4:C:185:ASP:OD2	4:C:200:ARG:NH2	2.31	0.64
5:D:367:GLY:HA3	5:D:448:GLN:HB2	1.79	0.64
8:H:104:ARG:HH22	8:H:108:ARG:HA	1.62	0.64
1:1:12:DT:H2'	1:1:13:DA:H8	1.63	0.63
8:H:110:SER:O	8:H:114:ILE:HG13	1.98	0.63
1:1:16:DC:C2	2:2:58:DG:N2	2.66	0.63
4:C:1020:GLU:O	4:C:1024:GLU:HG2	1.97	0.63
7:F:360:ASP:HA	7:F:363:ARG:HG2	1.79	0.63
1:1:6:DA:H61	2:2:68:DT:H3	1.46	0.63
2:2:55:DG:H2''	2:2:56:DG:H5'	1.80	0.63
5:D:966:VAL:HG13	5:D:974:VAL:HG23	1.80	0.63
4:C:74:ARG:NH1	4:C:121:GLU:OE2	2.27	0.63
5:D:1297:LYS:NZ	5:D:1299:GLY:O	2.26	0.63
1:1:19:DC:H2''	1:1:20:DA:N7	2.13	0.63
7:F:144:LEU:HD11	7:F:166:VAL:HG12	1.79	0.63
1:1:6:DA:N6	2:2:68:DT:H3	1.97	0.63
4:C:1020:GLU:HA	4:C:1023:HIS:CE1	2.33	0.63
5:D:309:ASN:ND2	5:D:324:LEU:O	2.32	0.63
7:F:505:ILE:HG13	7:F:506:SER:H	1.63	0.63
8:H:45:GLU:OE1	8:H:48:ARG:NH1	2.30	0.63
4:C:69:GLN:HB2	4:C:101:ARG:HB2	1.81	0.63
4:C:894:GLN:HA	5:D:77:ARG:HH12	1.64	0.63
8:J:12:ILE:O	8:J:16:ILE:HG12	1.99	0.63
8:G:30:ARG:NH2	8:H:124:LEU:HD13	2.14	0.63
2:2:35:DA:C2'	2:2:36:DT:H72	2.28	0.62
4:C:263:VAL:HA	4:C:267:ARG:HH21	1.62	0.62
2:2:40:DT:C2'	2:2:41:DT:H72	2.28	0.62
5:D:841:GLY:HA2	5:D:901:ARG:HD3	1.81	0.62
8:J:20:ASP:OD1	8:J:20:ASP:N	2.32	0.62
1:1:24:DA:H2''	1:1:25:DC:C6	2.34	0.62

*Continued on next page...*

*Continued from previous page...*

Atom-1	Atom-2	Interatomic distance (Å)	Clash overlap (Å)
1:1:22:DT:H3'	8:I:75:TYR:CE2	2.35	0.62
1:1:58:DA:H2''	1:1:59:DG:H5''	1.81	0.62
2:2:71:DG:C2'	2:2:72:DT:H73	2.24	0.62
5:D:151:MET:HG3	5:D:153:ASN:H	1.63	0.62
8:H:116:GLN:O	8:H:120:ARG:HG2	1.99	0.61
8:I:108:ARG:HG2	8:I:108:ARG:O	1.98	0.61
3:P:288:GLU:N	3:P:288:GLU:OE2	2.33	0.61
1:1:21:DA:H2'	1:1:22:DT:H71	1.82	0.61
1:1:52:DA:H8	7:F:429:THR:HG22	1.64	0.61
2:2:60:DA:H2'	2:2:61:DT:H71	1.81	0.61
4:C:102:LEU:HB2	4:C:118:LYS:HB2	1.83	0.61
5:D:27:PRO:HA	5:D:30:ILE:HG22	1.81	0.61
7:F:460:ILE:HG22	7:F:497:VAL:HG13	1.82	0.61
8:G:73:GLN:HB2	8:I:111:GLN:HE22	1.65	0.61
8:G:63:VAL:HG12	8:H:82:ILE:HG21	1.81	0.61
1:1:2:DA:H61	2:2:72:DT:H3	1.48	0.61
4:C:533:LEU:HD21	4:C:571:LEU:HD13	1.82	0.61
8:G:123:LYS:H	8:G:123:LYS:HD3	1.66	0.61
8:H:104:ARG:NH1	8:J:71:GLY:O	2.33	0.61
1:1:11:DT:H2'	1:1:12:DT:H71	1.82	0.61
8:I:83:LEU:HD13	8:J:12:ILE:HD12	1.81	0.61
8:I:96:ASN:OD1	8:I:98:ARG:NH1	2.34	0.61
4:C:1314:GLN:OE1	6:E:28:ARG:NH2	2.34	0.61
5:D:381:ILE:H	5:D:381:ILE:HD12	1.66	0.61
8:I:59:ARG:NH2	8:J:89:ASP:OD2	2.34	0.61
8:J:53:ASN:HB2	8:J:56:GLU:HB3	1.82	0.61
2:2:64:DT:C2	2:2:65:DC:C5	2.89	0.60
4:C:348:SER:O	4:C:352:ARG:HG2	2.01	0.60
5:D:216:LYS:HA	5:D:219:LYS:HE3	1.82	0.60
1:1:65:DA:H2''	1:1:66:DC:H5''	1.82	0.60
5:D:974:VAL:HG12	5:D:1002:VAL:HA	1.82	0.60
7:F:608:ARG:HH12	8:J:48:ARG:HE	1.48	0.60
4:C:750:ILE:HD11	4:C:966:ILE:HD13	1.84	0.60
1:1:38:DA:H2''	1:1:39:DT:H5''	1.83	0.60
8:G:73:GLN:CG	8:I:111:GLN:HE22	2.15	0.60
8:I:34:SER:HA	8:I:37:ASP:OD2	2.01	0.60
1:1:23:DA:H2''	1:1:24:DA:H8	1.65	0.60
2:2:64:DT:H2''	2:2:65:DC:C6	2.37	0.60
3:B:93:GLN:OE1	3:B:93:GLN:N	2.34	0.60
5:D:67:ASP:OD1	5:D:67:ASP:N	2.35	0.60
2:2:35:DA:H2''	2:2:36:DT:C6	2.37	0.60

*Continued on next page...*

*Continued from previous page...*

Atom-1	Atom-2	Interatomic distance (Å)	Clash overlap (Å)
3:B:124:VAL:HG21	3:B:209:GLY:HA3	1.83	0.60
5:D:957:SER:HB3	5:D:985:ILE:HB	1.84	0.60
5:D:1069:ALA:HA	5:D:1072:LYS:HE2	1.84	0.60
3:A:91:ARG:HE	3:A:210:THR:HA	1.66	0.59
3:P:302:GLU:OE2	3:P:302:GLU:N	2.35	0.59
7:F:105:MET:HE1	7:F:385:ARG:HG3	1.84	0.59
8:G:100:MET:HE3	8:G:114:ILE:HB	1.83	0.59
8:I:31:TRP:HZ3	8:J:120:ARG:HH21	1.49	0.59
4:C:444:ASP:O	4:C:450:ASN:ND2	2.36	0.59
7:F:508:GLU:HA	7:F:518:HIS:HB3	1.83	0.59
8:I:78:CYS:HA	8:J:70:GLY:HA2	1.84	0.59
5:D:129:ASP:OD2	5:D:220:ARG:NH1	2.36	0.59
3:B:194:GLN:N	3:B:194:GLN:OE1	2.36	0.59
5:D:800:LEU:HA	5:D:1309:ILE:HD11	1.84	0.59
2:2:45:DT:C7	7:F:588:ARG:NE	2.65	0.59
2:2:63:DA:C2'	2:2:64:DT:H71	2.32	0.59
5:D:413:ASP:OD1	5:D:413:ASP:N	2.35	0.59
5:D:1261:LEU:HD21	5:D:1306:LEU:HD12	1.84	0.59
7:F:143:TYR:O	7:F:147:GLN:NE2	2.36	0.59
8:I:101:GLU:OE1	8:I:105:ARG:NH1	2.35	0.59
5:D:549:LYS:HB3	5:D:569:LEU:HD21	1.84	0.59
8:G:100:MET:HE1	8:G:115:TYR:HD1	1.66	0.59
2:2:50:DT:H2'	2:2:51:DT:H72	1.85	0.59
5:D:105:ILE:HD13	5:D:273:ILE:HG22	1.85	0.59
5:D:160:LEU:HD22	5:D:164:GLN:HG3	1.84	0.59
5:D:517:CYS:HB2	5:D:520:ALA:HB2	1.85	0.58
5:D:1036:ARG:NH2	5:D:1112:GLY:O	2.36	0.58
8:H:84:THR:O	8:H:88:ASP:N	2.35	0.58
8:I:123:LYS:O	8:I:127:ARG:HG3	2.02	0.58
8:H:121:GLN:HA	8:H:124:LEU:HD12	1.84	0.58
2:2:71:DG:C1'	2:2:72:DT:H72	2.32	0.58
4:C:1288:GLN:O	4:C:1292:THR:OG1	2.21	0.58
5:D:620:PHE:O	5:D:624:ILE:HG23	2.03	0.58
8:I:120:ARG:O	8:I:124:LEU:HG	2.04	0.58
5:D:268:LEU:HD13	5:D:306:LEU:HA	1.86	0.58
7:F:390:ILE:HD11	7:F:432:THR:HG23	1.84	0.58
3:P:283:GLN:O	3:P:317:ARG:NH2	2.33	0.58
3:B:61:ILE:HG12	3:B:142:MET:HB2	1.86	0.58
8:I:59:ARG:HH11	8:J:86:LEU:HG	1.69	0.58
4:C:463:GLN:HG3	4:C:505:PHE:HB2	1.85	0.58
8:G:123:LYS:HE2	8:H:33:ARG:HH22	1.69	0.58

*Continued on next page...*

*Continued from previous page...*

Atom-1	Atom-2	Interatomic distance (Å)	Clash overlap (Å)
8:J:102:GLU:HA	8:J:105:ARG:HD2	1.83	0.58
8:G:28:GLU:H	8:G:28:GLU:CD	2.11	0.58
6:E:41:GLU:HG3	6:E:43:ASN:H	1.69	0.58
8:I:24:ALA:HB3	8:I:25:PRO:HD3	1.84	0.58
7:F:221:PHE:O	7:F:225:ARG:HG2	2.03	0.58
8:I:104:ARG:HB3	8:I:105:ARG:NH1	2.18	0.58
5:D:570:LYS:HD2	5:D:589:TYR:HD2	1.69	0.58
5:D:1263:LYS:HG3	5:D:1307:LEU:HD11	1.85	0.58
7:F:141:ILE:HD13	7:F:252:LEU:HD11	1.85	0.58
2:2:64:DT:H2''	2:2:65:DC:H6	1.69	0.57
8:J:91:LEU:HD12	8:J:107:TYR:CG	2.39	0.57
5:D:26:SER:HB3	5:D:236:TRP:CD2	2.39	0.57
7:F:281:ARG:O	7:F:285:ARG:HG3	2.03	0.57
8:G:102:GLU:OE2	8:G:105:ARG:NH2	2.37	0.57
3:B:205:MET:HE1	3:B:217:ILE:HG12	1.87	0.57
4:C:229:ILE:HB	4:C:240:GLU:HB3	1.86	0.57
4:C:825:GLU:HG3	4:C:827:ARG:HG2	1.85	0.57
8:I:39:ILE:HD12	8:I:39:ILE:H	1.68	0.57
4:C:704:MET:HG3	4:C:707:ALA:HB3	1.86	0.57
4:C:814:ASP:OD2	4:C:1106:ARG:NH2	2.38	0.57
5:D:1161:GLY:HA3	5:D:1179:PRO:HA	1.85	0.57
5:D:393:THR:HG23	5:D:396:ALA:H	1.69	0.57
7:F:596:ARG:HH22	8:I:69:LEU:HD13	1.69	0.57
4:C:275:ARG:HA	4:C:275:ARG:HH11	1.69	0.57
5:D:1155:ILE:H	5:D:1155:ILE:HD12	1.69	0.57
4:C:839:VAL:HG13	4:C:1049:ILE:HG12	1.85	0.57
4:C:873:ILE:HD11	4:C:931:VAL:HG22	1.85	0.57
4:C:940:GLU:OE2	4:C:940:GLU:N	2.30	0.57
4:C:1024:GLU:O	4:C:1028:LYS:NZ	2.30	0.57
4:C:1134:GLN:OE1	4:C:1136:GLN:NE2	2.37	0.57
8:H:104:ARG:HG2	8:H:109:LEU:O	2.05	0.57
5:D:396:ALA:O	5:D:400:MET:HG3	2.05	0.57
5:D:516:ASP:OD1	5:D:516:ASP:N	2.38	0.57
8:I:33:ARG:HD2	8:I:34:SER:H	1.68	0.57
1:1:16:DC:C2'	1:1:17:DC:C5	2.85	0.56
5:D:959:LYS:HB3	5:D:983:LYS:HB2	1.86	0.56
1:1:33:DA:H2'	1:1:34:DA:H8	1.71	0.56
1:1:18:DC:O2	2:2:57:DG:N2	2.38	0.56
1:1:71:DG:H2''	1:1:72:DC:H5''	1.88	0.56
4:C:1242:LYS:HD3	5:D:465:GLN:HE22	1.69	0.56
1:1:22:DT:OP2	8:I:77:PRO:HA	2.05	0.56

*Continued on next page...*

*Continued from previous page...*

Atom-1	Atom-2	Interatomic distance (Å)	Clash overlap (Å)
2:2:59:DC:OP1	8:H:77:PRO:HB3	2.06	0.56
4:C:629:PHE:HD2	4:C:634:VAL:HG21	1.71	0.56
4:C:890:LYS:NZ	4:C:911:SER:O	2.32	0.56
5:D:1022:PRO:HG2	5:D:1023:HIS:CE1	2.39	0.56
1:1:38:DA:H2'	1:1:39:DT:C5	2.41	0.56
4:C:120:GLN:OE1	4:C:490:GLN:N	2.38	0.56
4:C:733:VAL:HG12	4:C:750:ILE:HD13	1.88	0.56
8:G:72:ARG:NH1	8:I:111:GLN:NE2	2.54	0.56
4:C:895:LEU:HD12	4:C:899:GLU:OE2	2.04	0.56
5:D:1172:LYS:HE2	5:D:1193:TRP:HZ3	1.70	0.56
7:F:91:ILE:HD12	7:F:93:ARG:HA	1.86	0.56
8:H:124:LEU:O	8:H:128:ARG:HG3	2.05	0.56
1:1:6:DA:C2'	1:1:7:DT:C7	2.81	0.56
4:C:818:VAL:HG22	4:C:822:VAL:HG11	1.87	0.56
8:J:99:ASN:HB2	8:J:102:GLU:HB3	1.87	0.56
4:C:689:ALA:HB2	4:C:1233:LEU:HD23	1.88	0.56
7:F:132:CYS:SG	7:F:257:LYS:NZ	2.64	0.56
1:1:46:DT:N1	1:1:47:DT:H72	2.20	0.55
5:D:1368:ASP:OD1	5:D:1371:ARG:NH1	2.38	0.55
8:H:33:ARG:O	8:H:36:VAL:HG12	2.06	0.55
4:C:339:ASN:HB3	4:C:343:HIS:H	1.70	0.55
5:D:978:ARG:HD3	5:D:999:TYR:H	1.71	0.55
6:E:72:GLN:O	6:E:76:GLU:HG2	2.05	0.55
8:I:61:GLN:HE22	8:J:61:GLN:HG2	1.71	0.55
2:2:69:DC:N1	2:2:70:DT:H72	2.22	0.55
5:D:429:LEU:HB3	5:D:925:GLU:HG2	1.88	0.55
5:D:1028:ILE:HA	5:D:1120:THR:HA	1.87	0.55
7:F:586:ARG:O	7:F:589:GLN:HG3	2.07	0.55
8:H:28:GLU:HA	8:H:31:TRP:HB2	1.89	0.55
8:G:42:LEU:HD21	8:H:65:LEU:HD21	1.87	0.55
2:2:40:DT:H2'	2:2:41:DT:C7	2.30	0.55
5:D:821:MET:SD	5:D:881:LYS:HD2	2.47	0.55
5:D:850:LYS:HE3	5:D:871:LEU:HD21	1.87	0.55
5:D:1034:PHE:HD1	5:D:1036:ARG:HH22	1.54	0.55
5:D:1212:ASP:OD1	5:D:1213:GLY:N	2.40	0.55
5:D:1289:ASN:HA	5:D:1292:LEU:HB3	1.87	0.55
6:E:27:ALA:HA	6:E:30:MET:HB3	1.89	0.55
7:F:264:LYS:HD3	7:F:264:LYS:N	2.21	0.55
4:C:302:ILE:HG22	4:C:309:LEU:HA	1.89	0.55
5:D:1141:VAL:HA	5:D:1144:LEU:HD12	1.89	0.55
8:I:55:ARG:O	8:I:59:ARG:HG2	2.07	0.55

*Continued on next page...*

*Continued from previous page...*

Atom-1	Atom-2	Interatomic distance (Å)	Clash overlap (Å)
2:2:69:DC:C2'	2:2:70:DT:H73	2.36	0.55
4:C:69:GLN:HG3	4:C:101:ARG:NH1	2.22	0.55
4:C:706:ARG:HG2	4:C:793:GLU:HG2	1.89	0.55
4:C:935:THR:HG21	4:C:941:LYS:HG2	1.89	0.55
8:H:61:GLN:O	8:H:65:LEU:HG	2.06	0.55
4:C:163:LYS:HD3	4:C:163:LYS:C	2.32	0.55
2:2:27:DA:H2'	2:2:28:DA:C8	2.42	0.55
4:C:60:GLN:O	4:C:476:LYS:NZ	2.27	0.55
5:D:1266:ILE:HD11	5:D:1276:GLU:HG2	1.89	0.55
8:G:73:GLN:HG3	8:I:111:GLN:NE2	2.21	0.55
8:H:92:TYR:CE2	8:H:125:HIS:HB2	2.41	0.55
3:B:66:HIS:CE1	3:B:68:TYR:HB2	2.42	0.54
3:B:109:PRO:HB3	3:B:132:HIS:CD2	2.41	0.54
5:D:1341:ARG:NH1	5:D:1343:GLU:OE1	2.40	0.54
8:G:31:TRP:CH2	8:H:82:ILE:HA	2.43	0.54
1:1:29:DA:H2''	1:1:30:DC:C6	2.42	0.54
1:1:60:DC:H3'	1:1:61:DT:H2'	1.89	0.54
1:1:64:DC:H2''	1:1:65:DA:C8	2.41	0.54
3:A:6:THR:HG23	3:A:8:PHE:H	1.71	0.54
4:C:231:GLU:HB2	4:C:238:GLN:HB3	1.90	0.54
5:D:521:LYS:HB3	5:D:543:SER:HB2	1.89	0.54
1:1:45:DT:C2'	1:1:46:DT:H71	2.38	0.54
5:D:53:ARG:NH1	5:D:60:ARG:HH11	2.04	0.54
4:C:302:ILE:HA	4:C:310:ILE:HG12	1.89	0.54
5:D:876:SER:HA	5:D:990:ARG:HH21	1.72	0.54
5:D:950:ILE:HB	5:D:1018:ALA:HB3	1.90	0.54
6:E:70:GLN:O	6:E:73:GLN:HG3	2.07	0.54
8:G:46:LEU:HD23	8:H:57:LEU:HD11	1.89	0.54
8:J:22:ILE:HD12	8:J:23:PRO:HD2	1.89	0.54
8:I:55:ARG:NH2	8:J:89:ASP:OD1	2.41	0.54
8:J:11:ALA:O	8:J:14:GLN:HG3	2.08	0.54
1:1:58:DA:H1'	1:1:59:DG:C8	2.43	0.54
4:C:994:ARG:O	4:C:994:ARG:NH1	2.33	0.54
8:G:119:ALA:O	8:G:123:LYS:NZ	2.26	0.54
8:G:120:ARG:HH21	8:H:32:PRO:HD2	1.72	0.54
4:C:156:PHE:CE1	4:C:177:ILE:HD11	2.42	0.54
4:C:274:ILE:HD12	4:C:274:ILE:H	1.73	0.54
8:I:56:GLU:O	8:I:60:LYS:HG2	2.07	0.54
4:C:1072:ASN:ND2	4:C:1111:GLN:OE1	2.39	0.54
5:D:70:CYS:SG	5:D:73:GLY:N	2.81	0.54
8:J:7:GLU:N	8:J:13:ARG:HH21	2.05	0.54

*Continued on next page...*



*Continued from previous page...*

Atom-1	Atom-2	Interatomic distance (Å)	Clash overlap (Å)
4:C:434:ASP:HB3	4:C:439:LYS:HG3	1.89	0.54
4:C:1009:ASN:O	4:C:1012:GLU:HG3	2.07	0.54
7:F:485:GLU:OE1	7:F:485:GLU:N	2.40	0.54
3:P:300:LEU:HG	3:P:301:THR:HG23	1.89	0.54
3:B:109:PRO:HA	3:B:132:HIS:HA	1.89	0.53
2:2:40:DT:H2''	2:2:41:DT:H5''	1.89	0.53
4:C:248:GLY:O	4:C:268:ARG:NH1	2.41	0.53
4:C:819:SER:OG	4:C:821:ARG:N	2.39	0.53
5:D:978:ARG:HE	5:D:1197:ASN:HD22	1.56	0.53
8:G:124:LEU:HG	8:H:33:ARG:NH2	2.24	0.53
8:H:114:ILE:HA	8:H:117:ILE:HG22	1.90	0.53
3:B:111:THR:OG1	3:B:126:PRO:O	2.23	0.53
5:D:298:MET:SD	7:F:402:LEU:HD22	2.48	0.53
5:D:822:MET:HG2	5:D:839:VAL:HG12	1.91	0.53
8:J:126:THR:HA	8:J:129:HIS:CE1	2.43	0.53
1:1:12:DT:H2'	1:1:13:DA:C8	2.41	0.53
2:2:33:DT:H2''	2:2:34:DC:C5	2.43	0.53
5:D:607:THR:O	5:D:611:ILE:HG12	2.08	0.53
5:D:1330:ARG:O	5:D:1334:GLU:HG2	2.08	0.53
7:F:169:ASN:OD1	7:F:169:ASN:N	2.39	0.53
8:I:47:LYS:HZ1	8:J:3:HIS:N	2.06	0.53
5:D:700:ASN:O	5:D:704:GLU:HB3	2.09	0.53
3:P:285:THR:HG22	3:P:315:GLY:HA2	1.90	0.53
2:2:35:DA:C2'	2:2:36:DT:C7	2.85	0.53
2:2:56:DG:H2''	2:2:57:DG:C8	2.43	0.53
4:C:1024:GLU:HA	4:C:1027:LYS:HE2	1.90	0.53
5:D:225:GLU:O	5:D:229:GLN:HG3	2.09	0.53
5:D:492:SER:HB2	5:D:499:ILE:HD12	1.91	0.53
7:F:597:LYS:O	7:F:603:ARG:NH1	2.42	0.53
2:2:58:DG:OP2	8:I:112:PRO:HB2	2.08	0.53
4:C:178:PRO:HD2	4:C:183:TRP:CD1	2.44	0.53
4:C:842:ASP:HA	4:C:847:PRO:HA	1.90	0.53
5:D:355:ILE:HG12	5:D:466:MET:HB2	1.91	0.53
5:D:1173:ARG:HH21	5:D:1192:LYS:HA	1.74	0.53
3:P:290:LEU:HD11	3:P:300:LEU:HB3	1.90	0.53
2:2:34:DC:H2''	2:2:35:DA:O5'	2.09	0.53
6:E:15:ASN:OD1	6:E:16:ARG:N	2.41	0.53
6:E:29:GLN:HG2	6:E:35:LYS:HD2	1.90	0.53
8:I:28:GLU:HA	8:I:31:TRP:CG	2.43	0.53
1:1:10:DA:H2'	1:1:11:DT:C5	2.43	0.53
1:1:33:DA:H61	2:2:41:DT:H3	1.55	0.53

*Continued on next page...*



*Continued from previous page...*

Atom-1	Atom-2	Interatomic distance (Å)	Clash overlap (Å)
3:B:57:THR:HG22	3:B:175:ALA:HB2	1.90	0.53
4:C:26:TYR:HE2	4:C:32:LEU:HD22	1.74	0.53
4:C:804:PHE:O	5:D:638:SER:OG	2.26	0.53
8:G:18:HIS:HB3	8:H:86:LEU:HD12	1.90	0.53
4:C:1254:VAL:O	5:D:99:ARG:NH2	2.42	0.53
5:D:44:ILE:HD11	5:D:49:PHE:HB3	1.90	0.53
5:D:495:ASN:ND2	5:D:1247:LYS:HG3	2.24	0.53
7:F:334:SER:HA	7:F:337:VAL:HG12	1.90	0.53
8:J:117:ILE:O	8:J:121:GLN:HG2	2.08	0.53
1:I:13:DA:H2'	1:I:14:DT:C6	2.45	0.52
4:C:243:PRO:O	4:C:247:ARG:NH2	2.42	0.52
4:C:270:THR:H	4:C:273:HIS:CE1	2.27	0.52
5:D:424:ASN:HB3	5:D:467:ALA:HB3	1.91	0.52
4:C:524:ILE:HD11	4:C:712:SER:HA	1.91	0.52
7:F:288:MET:HE2	7:F:288:MET:H	1.74	0.52
4:C:590:PRO:HG2	4:C:655:VAL:HG11	1.92	0.52
8:G:44:ASN:HA	8:G:47:LYS:HE3	1.91	0.52
3:B:92:VAL:O	3:B:148:ARG:NH2	2.42	0.52
5:D:26:SER:HB3	5:D:236:TRP:CE2	2.44	0.52
5:D:926:PRO:HG2	5:D:1248:ILE:HD11	1.91	0.52
5:D:1174:ARG:HH12	5:D:1176:VAL:HG22	1.75	0.52
2:2:54:DT:H2''	2:2:55:DG:C8	2.45	0.52
4:C:500:ALA:O	4:C:504:GLU:HG2	2.10	0.52
5:D:1144:LEU:HD11	5:D:1236:GLU:HG2	1.90	0.52
5:D:1292:LEU:HD23	5:D:1294:ALA:H	1.75	0.52
8:I:45:GLU:HB3	8:J:6:PHE:HE2	1.74	0.52
1:I:51:DT:H5'	1:I:51:DT:H6	1.75	0.52
4:C:475:VAL:HG22	4:C:492:MET:HE1	1.92	0.52
4:C:632:ASP:OD1	4:C:647:ARG:NH2	2.42	0.52
7:F:102:MET:HA	7:F:105:MET:HG3	1.91	0.52
1:I:66:DC:H2'	1:I:67:DG:C8	2.44	0.52
2:2:71:DG:H2''	2:2:72:DT:C6	2.44	0.52
3:B:10:LYS:HA	3:B:10:LYS:HE2	1.92	0.52
5:D:1368:ASP:HA	5:D:1371:ARG:HH11	1.75	0.52
8:G:73:GLN:CG	8:I:111:GLN:NE2	2.72	0.52
8:H:31:TRP:HB3	8:H:33:ARG:HG3	1.92	0.52
8:H:127:ARG:HE	8:H:128:ARG:HG3	1.75	0.52
3:B:104:LYS:NZ	3:B:105:SER:O	2.30	0.52
5:D:212:THR:O	5:D:216:LYS:NZ	2.43	0.52
4:C:478:ARG:O	4:C:478:ARG:NH1	2.43	0.52
5:D:1357:ILE:O	5:D:1362:GLY:HA3	2.09	0.52

*Continued on next page...*

*Continued from previous page...*

Atom-1	Atom-2	Interatomic distance (Å)	Clash overlap (Å)
8:H:78:CYS:O	8:H:81:THR:OG1	2.28	0.52
8:J:95:PHE:HA	8:J:103:LEU:HD11	1.91	0.52
3:B:78:ILE:HA	3:B:81:ILE:HG12	1.92	0.52
4:C:104:ILE:HD12	4:C:116:ASP:HB3	1.92	0.52
4:C:211:ARG:NH2	4:C:217:THR:OG1	2.41	0.51
4:C:976:ARG:HG2	4:C:994:ARG:HE	1.75	0.51
5:D:1172:LYS:HB3	5:D:1189:MET:SD	2.51	0.51
8:G:73:GLN:CB	8:I:111:GLN:HE22	2.23	0.51
4:C:452:ARG:HH22	4:C:458:GLU:CD	2.17	0.51
5:D:1186:TYR:CE2	5:D:1188:GLU:HB3	2.46	0.51
5:D:1326:GLN:HG2	5:D:1327:GLU:HG3	1.92	0.51
8:G:91:LEU:HD12	8:G:107:TYR:HD2	1.75	0.51
4:C:229:ILE:HG12	4:C:332:ARG:HH22	1.75	0.51
4:C:615:VAL:HG12	4:C:638:SER:HB3	1.92	0.51
4:C:1016:GLU:O	4:C:1020:GLU:HG3	2.10	0.51
5:D:682:VAL:HA	5:D:685:ILE:HG12	1.93	0.51
8:G:27:LEU:HG	8:G:31:TRP:HE1	1.75	0.51
8:I:107:TYR:HB3	8:I:109:LEU:HD13	1.90	0.51
2:2:49:DG:H5''	8:H:115:TYR:OH	2.10	0.51
2:2:69:DC:C6	2:2:70:DT:H72	2.45	0.51
2:2:71:DG:H2''	2:2:72:DT:C5	2.44	0.51
3:B:164:ASP:N	3:B:164:ASP:OD1	2.42	0.51
4:C:63:SER:O	4:C:107:ARG:NH2	2.44	0.51
8:G:20:ASP:OD1	8:G:20:ASP:N	2.44	0.51
8:I:86:LEU:HB3	8:J:15:LEU:HD22	1.92	0.51
4:C:549:ASP:OD2	5:D:750:PRO:HB3	2.11	0.51
5:D:252:LEU:HD13	5:D:262:THR:HB	1.92	0.51
5:D:1109:LEU:HD13	5:D:1115:ILE:HG23	1.93	0.51
7:F:229:VAL:HA	7:F:232:ARG:HH11	1.75	0.51
8:I:28:GLU:O	8:I:31:TRP:HB2	2.11	0.51
8:J:59:ARG:O	8:J:63:VAL:HG22	2.10	0.51
7:F:88:GLU:HA	7:F:91:ILE:HG23	1.93	0.51
8:H:87:ARG:HG2	8:H:107:TYR:CE1	2.45	0.51
8:H:127:ARG:HE	8:H:128:ARG:CG	2.23	0.51
8:I:44:ASN:ND2	8:J:5:LEU:HB3	2.24	0.51
1:1:7:DT:H2''	1:1:8:DC:C5	2.46	0.51
2:2:34:DC:C2'	2:2:35:DA:C8	2.94	0.51
5:D:698:MET:HE3	5:D:698:MET:HA	1.93	0.51
8:H:92:TYR:CZ	8:H:122:ARG:HA	2.46	0.51
4:C:937:ASP:HB3	4:C:1039:GLY:HA3	1.92	0.51
4:C:1060:ILE:HD11	4:C:1066:MET:HE1	1.92	0.51

*Continued on next page...*

*Continued from previous page...*

Atom-1	Atom-2	Interatomic distance (Å)	Clash overlap (Å)
5:D:721:SER:O	5:D:725:MET:HG3	2.11	0.51
5:D:1172:LYS:HG3	5:D:1193:TRP:CZ3	2.46	0.51
7:F:227:GLN:HA	7:F:230:VAL:HG12	1.93	0.51
3:P:279:GLY:O	3:P:283:GLN:HG2	2.11	0.51
1:1:58:DA:OP1	1:1:59:DG:N2	2.44	0.51
2:2:28:DA:H2'	2:2:29:DA:C8	2.46	0.51
4:C:207:THR:HG21	4:C:351:LEU:HD13	1.93	0.51
5:D:1030:GLU:OE1	5:D:1099:TYR:OH	2.24	0.51
8:G:100:MET:HE2	8:G:111:GLN:HG3	1.93	0.51
8:J:104:ARG:O	8:J:108:ARG:HA	2.10	0.51
2:2:42:DG:C2	2:2:43:DA:C2	2.98	0.51
3:A:76:GLU:OE2	3:A:131:CYS:HA	2.10	0.51
4:C:251:ALA:HB2	4:C:269:ILE:HD11	1.93	0.51
8:J:78:CYS:HA	8:J:82:ILE:HD11	1.93	0.51
8:J:104:ARG:NH2	8:J:105:ARG:HE	2.08	0.51
5:D:495:ASN:OD1	5:D:495:ASN:N	2.44	0.50
6:E:71:GLU:O	6:E:74:GLU:HG3	2.10	0.50
1:1:9:DG:N2	2:2:65:DC:N3	2.52	0.50
3:A:182:ARG:NH1	4:C:1090:ASN:O	2.45	0.50
5:D:207:GLU:N	5:D:207:GLU:OE1	2.44	0.50
5:D:460:ASP:OD1	5:D:460:ASP:N	2.43	0.50
8:H:100:MET:HE1	8:H:114:ILE:HG22	1.93	0.50
4:C:319:LEU:HA	4:C:322:LEU:HD12	1.93	0.50
4:C:528:ARG:NH2	4:C:576:SER:O	2.32	0.50
6:E:36:ASP:N	6:E:36:ASP:OD1	2.45	0.50
3:P:250:ASP:HB3	3:P:253:LEU:HD23	1.94	0.50
2:2:36:DT:H2''	2:2:37:DG:H8	1.76	0.50
2:2:57:DG:H2'	8:I:116:GLN:HE22	1.74	0.50
2:2:69:DC:H2''	2:2:70:DT:H73	1.92	0.50
4:C:976:ARG:HB3	4:C:997:TRP:HZ3	1.75	0.50
5:D:1186:TYR:HE2	5:D:1188:GLU:HB3	1.75	0.50
4:C:732:ILE:HD11	4:C:769:PRO:HB3	1.93	0.50
7:F:240:ARG:HE	7:F:357:GLN:HE22	1.60	0.50
8:H:74:PHE:CE1	8:H:76:ILE:HG22	2.46	0.50
8:I:87:ARG:HG3	8:I:107:TYR:CE1	2.47	0.50
2:2:1:DT:H2''	2:2:2:DG:C8	2.47	0.50
4:C:89:GLY:HA2	4:C:140:GLY:HA3	1.92	0.50
4:C:318:SER:OG	4:C:320:ASP:OD1	2.28	0.50
4:C:549:ASP:OD1	4:C:550:VAL:N	2.43	0.50
4:C:759:SER:HB3	4:C:763:THR:H	1.77	0.50
3:B:59:VAL:HG13	3:B:171:LEU:HB2	1.93	0.50

*Continued on next page...*

*Continued from previous page...*

Atom-1	Atom-2	Interatomic distance (Å)	Clash overlap (Å)
4:C:122:VAL:HG23	4:C:490:GLN:HG3	1.94	0.50
4:C:887:VAL:HG13	4:C:913:VAL:HG23	1.93	0.50
5:D:503:SER:OG	5:D:504:GLN:N	2.45	0.50
7:F:235:ILE:HD13	7:F:245:ALA:HB1	1.93	0.50
7:F:240:ARG:O	7:F:246:GLN:NE2	2.38	0.50
8:I:43:GLU:OE1	8:I:55:ARG:HD2	2.12	0.50
8:I:44:ASN:HA	8:J:4:ASP:OD2	2.12	0.50
8:I:126:THR:O	8:I:130:GLN:HB2	2.11	0.50
2:2:57:DG:C6	2:2:58:DG:C2	3.00	0.50
3:B:96:ASP:OD1	3:B:96:ASP:N	2.44	0.50
4:C:772:SER:N	4:C:775:GLU:OE2	2.35	0.50
5:D:1317:GLU:OE1	5:D:1317:GLU:N	2.27	0.50
7:F:137:TYR:CZ	7:F:139:GLU:HB2	2.47	0.50
7:F:556:ALA:O	7:F:560:ARG:HG3	2.11	0.50
3:A:97:GLU:OE2	3:A:145:LYS:NZ	2.41	0.49
3:B:47:LEU:HG	3:B:180:VAL:HG21	1.93	0.49
4:C:206:ALA:HB1	4:C:429:MET:HE1	1.94	0.49
5:D:800:LEU:HD22	5:D:1256:ILE:HD13	1.94	0.49
5:D:1046:ILE:HD12	5:D:1059:LEU:HD13	1.94	0.49
7:F:571:TYR:HB3	7:F:575:GLU:HB2	1.93	0.49
4:C:69:GLN:HG3	4:C:101:ARG:HH12	1.76	0.49
4:C:788:SER:OG	4:C:795:ALA:O	2.30	0.49
1:1:15:DG:H2''	1:1:16:DC:C6	2.44	0.49
2:2:42:DG:N2	2:2:43:DA:N3	2.61	0.49
5:D:428:THR:O	5:D:428:THR:OG1	2.26	0.49
5:D:480:ALA:HA	5:D:484:MET:HB2	1.94	0.49
5:D:1109:LEU:HD12	5:D:1113:VAL:HG23	1.93	0.49
6:E:44:ASP:HB3	6:E:49:ILE:HG23	1.93	0.49
7:F:309:ASN:OD1	7:F:310:GLU:N	2.45	0.49
7:F:606:VAL:O	7:F:609:SER:OG	2.26	0.49
8:G:25:PRO:HD2	8:G:26:GLU:HG3	1.94	0.49
8:H:108:ARG:NH1	8:H:108:ARG:O	2.45	0.49
1:1:38:DA:H2'	1:1:39:DT:C7	2.42	0.49
5:D:123:ARG:NH1	5:D:1334:GLU:OE1	2.45	0.49
7:F:166:VAL:HB	7:F:259:PHE:CG	2.47	0.49
8:I:24:ALA:O	8:I:28:GLU:HG3	2.12	0.49
3:B:66:HIS:O	3:B:69:SER:OG	2.24	0.49
4:C:256:GLU:N	4:C:256:GLU:OE2	2.45	0.49
4:C:959:ASP:OD1	4:C:960:LEU:N	2.46	0.49
5:D:114:ILE:HB	5:D:304:ASP:OD1	2.12	0.49
5:D:417:ARG:HE	5:D:418:GLU:HG3	1.77	0.49

*Continued on next page...*

*Continued from previous page...*

Atom-1	Atom-2	Interatomic distance (Å)	Clash overlap (Å)
5:D:818:GLU:HB3	5:D:881:LYS:NZ	2.28	0.49
7:F:456:MET:O	7:F:460:ILE:HG23	2.12	0.49
8:G:16:ILE:HG23	8:G:63:VAL:HG21	1.94	0.49
8:J:99:ASN:O	8:J:103:LEU:HG	2.13	0.49
3:B:41:ASN:ND2	4:C:1217:THR:HA	2.28	0.49
4:C:106:GLU:OE1	4:C:115:LYS:HD2	2.12	0.49
4:C:177:ILE:HG22	4:C:183:TRP:CD2	2.47	0.49
4:C:1122:LYS:HG2	4:C:1229:TYR:CZ	2.47	0.49
4:C:1152:GLY:HA3	4:C:1155:VAL:HG13	1.95	0.49
5:D:1295:ASN:OD1	5:D:1298:VAL:HG12	2.13	0.49
1:1:68:DG:H2''	1:1:69:DA:H5''	1.93	0.49
5:D:141:PHE:CD2	5:D:180:MET:HG2	2.48	0.49
5:D:226:ALA:HA	5:D:229:GLN:NE2	2.28	0.49
4:C:1260:GLY:O	4:C:1264:GLN:NE2	2.44	0.49
5:D:1063:ASP:OD1	5:D:1063:ASP:N	2.42	0.49
1:1:20:DA:H2'	8:H:113:GLN:HG2	1.94	0.49
2:2:59:DC:OP2	8:H:77:PRO:HA	2.12	0.49
2:2:61:DT:H2''	2:2:62:DA:H5''	1.95	0.49
2:2:63:DA:C2'	2:2:64:DT:C7	2.87	0.49
4:C:180:ARG:NH1	4:C:393:ASP:O	2.35	0.49
4:C:1109:ILE:HD11	5:D:740:LEU:HD11	1.94	0.49
1:1:30:DC:O5'	1:1:30:DC:H6	1.96	0.48
4:C:263:VAL:HG11	4:C:269:ILE:HG13	1.95	0.48
4:C:575:LEU:HD23	4:C:575:LEU:H	1.78	0.48
7:F:167:ASP:OD2	7:F:260:ARG:NH2	2.46	0.48
8:I:91:LEU:HG	8:I:103:LEU:HD12	1.95	0.48
4:C:629:PHE:CD2	4:C:634:VAL:HG21	2.48	0.48
4:C:817:LEU:HB3	4:C:1097:VAL:HB	1.95	0.48
4:C:890:LYS:N	4:C:912:ASP:OD1	2.45	0.48
4:C:1268:GLN:NE2	5:D:352:ARG:HD2	2.28	0.48
5:D:905:ARG:HH12	6:E:16:ARG:HD2	1.76	0.48
5:D:1167:LYS:HB3	5:D:1170:LYS:HD2	1.94	0.48
7:F:137:TYR:HD2	7:F:140:ALA:HB2	1.78	0.48
7:F:417:ASP:OD1	7:F:417:ASP:N	2.35	0.48
3:A:57:THR:HG21	3:A:147:GLN:OE1	2.13	0.48
4:C:241:LEU:HD21	4:C:246:LEU:HD11	1.95	0.48
5:D:1058:SER:OG	5:D:1059:LEU:N	2.46	0.48
8:J:127:ARG:HD3	8:J:128:ARG:HH21	1.77	0.48
3:B:66:HIS:HE1	3:B:68:TYR:HB2	1.79	0.48
7:F:238:LYS:HB3	7:F:242:HIS:CG	2.48	0.48
4:C:1191:LYS:N	4:C:1194:GLU:OE1	2.41	0.48

*Continued on next page...*

*Continued from previous page...*

Atom-1	Atom-2	Interatomic distance (Å)	Clash overlap (Å)
5:D:405:GLU:O	5:D:408:VAL:HG22	2.13	0.48
5:D:432:LEU:HD11	5:D:489:ASN:HB3	1.95	0.48
2:2:26:DA:H2'	2:2:27:DA:C8	2.48	0.48
2:2:63:DA:H2'	2:2:64:DT:H73	1.90	0.48
4:C:759:SER:OG	4:C:760:ASN:N	2.46	0.48
4:C:994:ARG:NH1	4:C:997:TRP:HB2	2.28	0.48
4:C:1119:MET:HG3	4:C:1204:LEU:HD13	1.94	0.48
5:D:846:GLU:HA	5:D:860:ARG:HG2	1.96	0.48
7:F:367:ILE:HD12	7:F:368:GLY:N	2.29	0.48
8:I:92:TYR:HE1	8:I:122:ARG:HG3	1.79	0.48
2:2:71:DG:N9	2:2:72:DT:H72	2.27	0.48
8:H:80:ASP:O	8:H:84:THR:HG22	2.13	0.48
8:J:43:GLU:O	8:J:47:LYS:NZ	2.47	0.48
2:2:20:DT:H1'	2:2:21:DA:H5'	1.96	0.48
2:2:56:DG:H3'	8:I:120:ARG:HH22	1.78	0.48
2:2:64:DT:C2	2:2:65:DC:C4	3.01	0.48
3:A:26:VAL:HB	3:A:203:ILE:HG23	1.94	0.48
5:D:502:PRO:HB3	5:D:506:VAL:HB	1.95	0.48
8:I:100:MET:HE3	8:I:114:ILE:HG22	1.95	0.48
2:2:18:DG:H1'	2:2:19:DG:C8	2.48	0.48
2:2:34:DC:C2'	2:2:35:DA:H8	2.27	0.48
2:2:39:DG:H2''	2:2:40:DT:C6	2.48	0.48
3:A:31:LEU:HD11	3:A:39:LEU:HD12	1.94	0.48
4:C:937:ASP:OD2	4:C:937:ASP:N	2.46	0.48
4:C:1247:SER:HB2	5:D:375:GLU:O	2.14	0.48
4:C:1289:GLU:O	4:C:1294:LYS:HG2	2.14	0.48
8:G:25:PRO:HA	8:G:28:GLU:OE2	2.14	0.48
1:1:11:DT:C2	1:1:12:DT:C5	3.02	0.48
4:C:58:PRO:HB3	4:C:69:GLN:OE1	2.14	0.48
4:C:443:ASP:OD1	4:C:443:ASP:N	2.41	0.48
4:C:1246:ARG:NH2	4:C:1250:SER:O	2.47	0.48
5:D:416:ILE:HD13	5:D:441:LEU:HG	1.95	0.48
3:P:300:LEU:HD23	3:P:300:LEU:H	1.78	0.48
8:J:103:LEU:HA	8:J:106:GLN:HB3	1.96	0.48
1:1:55:DG:H5'	1:1:55:DG:H8	1.79	0.47
1:1:70:DT:H2''	1:1:71:DG:C8	2.49	0.47
2:2:36:DT:H2''	2:2:37:DG:C8	2.49	0.47
3:A:13:LEU:HD11	3:A:16:ILE:HD11	1.95	0.47
4:C:61:SER:HB3	4:C:479:LEU:HB3	1.96	0.47
4:C:191:LYS:HB3	4:C:191:LYS:HE3	1.69	0.47
4:C:883:LEU:HD13	4:C:1052:VAL:HG11	1.96	0.47

*Continued on next page...*

*Continued from previous page...*

Atom-1	Atom-2	Interatomic distance (Å)	Clash overlap (Å)
4:C:901:LEU:HD12	7:F:563:PHE:HD2	1.79	0.47
3:A:9:LEU:HD23	3:A:9:LEU:HA	1.70	0.47
3:B:9:LEU:HD23	3:B:9:LEU:H	1.80	0.47
4:C:231:GLU:O	4:C:238:GLN:N	2.35	0.47
4:C:271:ALA:HA	4:C:274:ILE:HD13	1.96	0.47
4:C:296:VAL:HA	4:C:316:GLU:HA	1.96	0.47
4:C:692:THR:HG22	4:C:693:LEU:H	1.79	0.47
7:F:277:MET:HA	7:F:280:VAL:HG12	1.95	0.47
7:F:336:GLU:HA	7:F:339:ARG:HG2	1.96	0.47
4:C:320:ASP:OD1	4:C:320:ASP:N	2.46	0.47
7:F:286:LEU:HD23	7:F:290:LEU:HD23	1.97	0.47
7:F:463:LEU:HD22	7:F:497:VAL:HG11	1.97	0.47
8:H:56:GLU:CD	8:H:56:GLU:H	2.22	0.47
8:I:28:GLU:HA	8:I:31:TRP:CB	2.44	0.47
8:I:92:TYR:CG	8:I:121:GLN:HB2	2.49	0.47
3:A:22:THR:HG23	3:A:207:THR:O	2.14	0.47
4:C:1142:ARG:NH1	4:C:1164:PHE:O	2.34	0.47
5:D:604:MET:HE3	5:D:620:PHE:CZ	2.50	0.47
5:D:677:GLU:O	5:D:681:LYS:HG3	2.13	0.47
7:F:596:ARG:HD3	8:I:68:PHE:HE2	1.79	0.47
8:G:71:GLY:O	8:I:104:ARG:NH1	2.47	0.47
8:H:88:ASP:HB3	8:H:121:GLN:HE21	1.80	0.47
8:J:16:ILE:O	8:J:19:ILE:HG12	2.13	0.47
4:C:393:ASP:OD1	4:C:393:ASP:N	2.46	0.47
4:C:786:GLY:N	4:C:789:THR:OG1	2.40	0.47
4:C:929:ILE:HD13	4:C:1055:ALA:HB2	1.95	0.47
5:D:1172:LYS:HG2	5:D:1190:ILE:O	2.14	0.47
3:A:27:THR:HG23	3:A:202:VAL:HG22	1.96	0.47
3:B:153:VAL:HG12	3:B:177:TYR:HE2	1.78	0.47
4:C:229:ILE:HG12	4:C:332:ARG:HH12	1.79	0.47
5:D:151:MET:HG3	5:D:153:ASN:N	2.29	0.47
7:F:317:ASN:HA	7:F:320:ILE:HG12	1.96	0.47
8:H:34:SER:HA	8:H:37:ASP:OD2	2.14	0.47
8:I:35:VAL:HG23	8:J:77:PRO:HD2	1.97	0.47
1:I:22:DT:H2"	1:I:23:DA:C8	2.49	0.47
5:D:1048:ARG:HD2	5:D:1059:LEU:HD23	1.97	0.47
6:E:56:GLU:OE2	6:E:58:LEU:HB2	2.15	0.47
7:F:148:TYR:HA	7:F:151:VAL:HG22	1.96	0.47
8:I:61:GLN:NE2	8:J:42:LEU:HD12	2.30	0.47
4:C:1107:MET:HB3	4:C:1107:MET:HE3	1.76	0.47
1:I:63:DT:C4	4:C:175:ARG:NH2	2.83	0.47

*Continued on next page...*



*Continued from previous page...*

Atom-1	Atom-2	Interatomic distance (Å)	Clash overlap (Å)
4:C:821:ARG:O	4:C:825:GLU:HG2	2.15	0.47
5:D:278:ARG:NE	7:F:407:GLU:OE2	2.33	0.47
7:F:591:GLU:O	7:F:595:LEU:HD23	2.15	0.47
8:I:59:ARG:O	8:I:63:VAL:HG23	2.15	0.47
1:1:24:DA:H2''	1:1:25:DC:H6	1.76	0.47
3:A:100:LEU:HB2	3:A:144:ILE:HB	1.97	0.47
4:C:3:TYR:C	4:C:8:LYS:HZ1	2.17	0.47
4:C:1332:SER:HB3	5:D:102:MET:HE1	1.96	0.47
1:1:38:DA:H2''	1:1:39:DT:C5'	2.45	0.46
5:D:355:ILE:CG1	5:D:466:MET:HB2	2.45	0.46
7:F:268:TYR:HA	7:F:271:ASN:HB2	1.97	0.46
8:I:56:GLU:H	8:I:56:GLU:CD	2.21	0.46
8:J:57:LEU:O	8:J:61:GLN:NE2	2.49	0.46
4:C:794:LEU:HD21	4:C:796:LEU:HG	1.97	0.46
4:C:898:GLU:OE1	4:C:898:GLU:N	2.48	0.46
4:C:1341:ASP:N	4:C:1341:ASP:OD1	2.48	0.46
8:H:100:MET:HE1	8:H:118:ILE:HD12	1.97	0.46
8:I:28:GLU:O	8:I:33:ARG:NH2	2.48	0.46
8:I:33:ARG:CD	8:I:34:SER:H	2.29	0.46
8:I:61:GLN:HE21	8:J:42:LEU:HD12	1.79	0.46
4:C:221:LEU:HD13	4:C:336:LEU:HD11	1.98	0.46
5:D:34:SER:OG	5:D:36:GLY:O	2.33	0.46
7:F:350:GLU:OE2	7:F:351:THR:OG1	2.32	0.46
7:F:456:MET:CE	7:F:500:ILE:HD11	2.46	0.46
8:G:111:GLN:HB3	8:G:112:PRO:HD3	1.97	0.46
8:J:55:ARG:O	8:J:59:ARG:HG3	2.15	0.46
2:2:35:DA:C8	2:2:36:DT:H72	2.51	0.46
2:2:45:DT:C7	7:F:588:ARG:CD	2.91	0.46
4:C:1192:GLU:O	4:C:1196:LYS:HG2	2.15	0.46
5:D:952:VAL:HG13	5:D:1013:GLY:HA2	1.96	0.46
7:F:262:VAL:HB	7:F:264:LYS:NZ	2.30	0.46
7:F:574:GLU:N	7:F:584:ARG:HH12	2.14	0.46
8:J:121:GLN:HA	8:J:124:LEU:HD12	1.97	0.46
1:1:6:DA:C2'	1:1:7:DT:H71	2.35	0.46
1:1:6:DA:N1	2:2:68:DT:C2	2.84	0.46
1:1:45:DT:H2''	1:1:46:DT:H71	1.97	0.46
2:2:52:DA:O5'	2:2:52:DA:H8	1.99	0.46
4:C:726:TYR:O	4:C:733:VAL:HG22	2.15	0.46
5:D:865:HIS:CE1	5:D:867:GLN:HB2	2.50	0.46
7:F:291:CYS:SG	7:F:297:MET:HE1	2.56	0.46
8:G:28:GLU:HA	8:G:31:TRP:CD1	2.51	0.46

*Continued on next page...*



*Continued from previous page...*

Atom-1	Atom-2	Interatomic distance (Å)	Clash overlap (Å)
8:G:72:ARG:NH1	8:G:73:GLN:HB2	2.31	0.46
8:J:24:ALA:O	8:J:27:LEU:HG	2.16	0.46
8:J:43:GLU:OE1	8:J:55:ARG:HA	2.15	0.46
4:C:895:LEU:HA	4:C:899:GLU:OE2	2.16	0.46
4:C:1196:LYS:HD2	4:C:1206:THR:HG23	1.98	0.46
5:D:572:THR:OG1	5:D:573:THR:N	2.48	0.46
6:E:30:MET:HE3	6:E:30:MET:HB2	1.81	0.46
7:F:399:LEU:HD23	7:F:400:GLN:N	2.31	0.46
8:H:42:LEU:O	8:H:46:LEU:HG	2.16	0.46
8:J:95:PHE:CA	8:J:103:LEU:HD11	2.46	0.46
5:D:255:LEU:HD23	5:D:255:LEU:HA	1.80	0.46
5:D:827:GLU:HA	5:D:994:SER:HB3	1.97	0.46
6:E:29:GLN:OE1	6:E:29:GLN:N	2.43	0.46
8:I:28:GLU:HG2	8:I:31:TRP:CE3	2.51	0.46
8:J:10:PRO:HA	8:J:13:ARG:HB3	1.98	0.46
8:J:95:PHE:CZ	8:J:97:GLY:HA2	2.51	0.46
4:C:483:ASP:OD1	4:C:486:THR:N	2.46	0.46
4:C:759:SER:HB2	4:C:765:ILE:HD11	1.98	0.46
4:C:1004:ASP:N	4:C:1004:ASP:OD1	2.49	0.46
5:D:133:ARG:HH21	7:F:93:ARG:HH21	1.63	0.46
5:D:430:HIS:HB3	5:D:925:GLU:HG3	1.98	0.46
5:D:673:VAL:HG23	5:D:677:GLU:HB2	1.98	0.46
6:E:42:GLU:O	6:E:42:GLU:HG3	2.15	0.46
8:I:28:GLU:CA	8:I:31:TRP:HB2	2.46	0.46
4:C:11:ILE:O	4:C:1149:TYR:OH	2.31	0.46
4:C:823:VAL:HG21	4:C:1079:ILE:HD12	1.97	0.46
5:D:353:SER:HB3	5:D:447:ILE:HG12	1.97	0.46
8:G:31:TRP:CE3	8:G:31:TRP:HA	2.49	0.46
8:G:56:GLU:H	8:G:56:GLU:CD	2.21	0.46
8:I:124:LEU:O	8:I:128:ARG:HG3	2.16	0.46
1:1:6:DA:N1	2:2:68:DT:O2	2.49	0.46
2:2:71:DG:H2'	2:2:72:DT:H73	1.79	0.46
4:C:962:GLU:O	4:C:965:GLN:HG3	2.15	0.46
5:D:1368:ASP:HA	5:D:1371:ARG:HD3	1.98	0.46
7:F:98:VAL:O	7:F:102:MET:HG3	2.15	0.46
7:F:166:VAL:HG23	7:F:168:PRO:HD3	1.97	0.46
8:J:2:GLN:O	8:J:7:GLU:HB2	2.16	0.46
8:J:91:LEU:HD12	8:J:107:TYR:CD2	2.50	0.46
4:C:373:GLY:HA2	7:F:91:ILE:HG22	1.99	0.45
4:C:805:MET:HE3	4:C:805:MET:HB2	1.73	0.45
5:D:970:SER:OG	5:D:972:LYS:NZ	2.39	0.45

*Continued on next page...*

*Continued from previous page...*

Atom-1	Atom-2	Interatomic distance (Å)	Clash overlap (Å)
5:D:1023:HIS:O	5:D:1126:GLN:N	2.49	0.45
5:D:1167:LYS:HG2	5:D:1174:ARG:HE	1.81	0.45
5:D:1199:PHE:H	5:D:1202:GLU:HG3	1.81	0.45
8:H:99:ASN:O	8:H:103:LEU:HG	2.15	0.45
8:J:92:TYR:HB2	8:J:121:GLN:HG3	1.97	0.45
8:J:103:LEU:HD22	8:J:107:TYR:HE2	1.81	0.45
1:1:18:DC:C2	2:2:57:DG:N2	2.83	0.45
2:2:61:DT:C2	2:2:62:DA:C8	3.05	0.45
4:C:23:ASP:N	4:C:23:ASP:OD1	2.49	0.45
5:D:279:LEU:O	5:D:283:LEU:HD23	2.16	0.45
5:D:846:GLU:OE1	5:D:881:LYS:HB3	2.16	0.45
5:D:1221:LEU:HD11	5:D:1226:VAL:HG12	1.98	0.45
8:I:68:PHE:CD1	8:J:41:VAL:HG21	2.51	0.45
8:I:98:ARG:H	8:I:98:ARG:HD3	1.81	0.45
4:C:741:MET:SD	4:C:747:GLY:HA3	2.57	0.45
5:D:37:GLU:HB2	5:D:104:HIS:CE1	2.51	0.45
5:D:513:MET:HB2	5:D:544:LEU:HD21	1.97	0.45
7:F:421:TYR:OH	7:F:422:ARG:NH1	2.48	0.45
8:H:119:ALA:HB3	8:H:120:ARG:NH1	2.32	0.45
8:I:69:LEU:HD11	8:I:74:PHE:HB3	1.98	0.45
4:C:1070:HIS:NE2	4:C:1114:GLU:OE1	2.47	0.45
5:D:309:ASN:N	5:D:326:SER:OG	2.48	0.45
5:D:556:GLU:HG3	5:D:558:ASP:H	1.82	0.45
6:E:26:ARG:HD3	6:E:59:ILE:HD13	1.98	0.45
6:E:30:MET:HE2	6:E:37:PRO:HB3	1.99	0.45
7:F:315:TRP:HA	7:F:318:ALA:HB3	1.98	0.45
8:H:100:MET:HE2	8:H:100:MET:HA	1.98	0.45
4:C:478:ARG:HH12	4:C:482:GLY:CA	2.29	0.45
5:D:370:LYS:HG3	5:D:441:LEU:HD13	1.99	0.45
5:D:850:LYS:NZ	5:D:857:LEU:HB3	2.31	0.45
5:D:863:LEU:HD12	5:D:863:LEU:HA	1.73	0.45
5:D:1346:GLY:N	5:D:1349:GLU:OE1	2.44	0.45
8:G:35:VAL:O	8:G:38:LEU:HB3	2.16	0.45
8:G:120:ARG:HH12	8:H:31:TRP:CD1	2.34	0.45
4:C:163:LYS:HD3	4:C:163:LYS:O	2.16	0.45
4:C:174:ALA:HB3	4:C:186:PHE:HB2	1.98	0.45
5:D:269:TYR:O	5:D:273:ILE:HG23	2.17	0.45
5:D:1035:VAL:HG21	5:D:1115:ILE:HG12	1.98	0.45
5:D:1042:ASP:HA	5:D:1046:ILE:HG13	1.97	0.45
6:E:45:LYS:O	6:E:49:ILE:HG12	2.16	0.45
8:G:120:ARG:NH1	8:H:33:ARG:HD2	2.31	0.45

*Continued on next page...*

*Continued from previous page...*

Atom-1	Atom-2	Interatomic distance (Å)	Clash overlap (Å)
1:1:43:DG:C2	1:1:44:DT:C2	3.05	0.45
2:2:47:DT:H5''	8:I:30:ARG:HG2	1.99	0.45
3:A:77:ASP:OD1	3:A:78:ILE:N	2.49	0.45
3:B:56:VAL:HG12	3:B:146:VAL:HG22	1.99	0.45
4:C:1242:LYS:HD3	5:D:465:GLN:NE2	2.31	0.45
8:I:86:LEU:HB3	8:J:15:LEU:HB3	1.99	0.45
4:C:1238:LEU:O	4:C:1242:LYS:HG3	2.17	0.45
5:D:1167:LYS:HD2	5:D:1170:LYS:HE2	1.99	0.45
5:D:1217:PRO:HA	5:D:1220:ILE:HD12	1.98	0.45
8:I:55:ARG:HG3	8:I:59:ARG:HE	1.81	0.45
8:I:104:ARG:HG2	8:I:105:ARG:HH22	1.81	0.45
8:J:74:PHE:CE2	8:J:76:ILE:HD11	2.51	0.45
2:2:18:DG:H4'	2:2:19:DG:H5'	1.98	0.45
3:A:154:PRO:HG2	3:A:157:THR:HG23	1.99	0.45
3:B:32:GLU:HB3	3:B:35:PHE:CD2	2.52	0.45
3:B:67:GLU:HA	3:B:78:ILE:HD11	1.97	0.45
4:C:465:ARG:NH1	4:C:465:ARG:HB3	2.32	0.45
5:D:746:LEU:HD23	5:D:758:PRO:HB3	1.99	0.45
5:D:930:LEU:HA	5:D:1244:GLN:HG2	1.98	0.45
7:F:326:TRP:CD1	7:F:326:TRP:H	2.33	0.45
7:F:426:LYS:HB3	7:F:426:LYS:HE3	1.69	0.45
1:1:39:DT:H5'	1:1:39:DT:C6	2.51	0.45
5:D:430:HIS:NE2	5:D:432:LEU:HB2	2.32	0.45
5:D:908:ILE:HD12	5:D:909:ILE:H	1.82	0.45
7:F:355:ILE:O	7:F:359:LYS:HG3	2.17	0.45
8:J:83:LEU:HD23	8:J:83:LEU:H	1.82	0.45
4:C:230:PHE:CZ	4:C:292:ILE:HD12	2.53	0.44
4:C:300:ASP:OD1	4:C:300:ASP:N	2.50	0.44
4:C:1271:GLY:O	4:C:1274:GLU:HG2	2.16	0.44
5:D:242:LEU:HD12	5:D:243:PRO:HD2	1.99	0.44
5:D:451:PRO:HD2	5:D:625:MET:HE1	1.99	0.44
5:D:1323:ALA:HA	5:D:1331:VAL:HG21	1.99	0.44
6:E:29:GLN:HE21	6:E:67:ARG:HH22	1.65	0.44
8:G:34:SER:HB2	8:H:74:PHE:CE1	2.53	0.44
8:H:40:ASP:OD1	8:H:40:ASP:N	2.36	0.44
8:I:111:GLN:HB2	8:I:112:PRO:HD3	1.98	0.44
1:1:10:DA:OP2	8:H:30:ARG:HB3	2.17	0.44
2:2:17:DG:H4'	4:C:514:PHE:CZ	2.52	0.44
4:C:59:ILE:HD11	4:C:475:VAL:HG11	1.99	0.44
4:C:897:PRO:O	4:C:900:LYS:HG2	2.17	0.44
4:C:1095:ASP:OD1	4:C:1095:ASP:N	2.47	0.44

*Continued on next page...*

*Continued from previous page...*

Atom-1	Atom-2	Interatomic distance (Å)	Clash overlap (Å)
5:D:473:THR:HG23	5:D:476:ALA:H	1.82	0.44
5:D:1172:LYS:HG3	5:D:1193:TRP:HZ3	1.81	0.44
5:D:1230:THR:HG22	5:D:1257:VAL:HG11	1.99	0.44
7:F:395:THR:HA	7:F:397:ARG:HA	1.98	0.44
8:G:16:ILE:HB	8:H:48:ARG:HH12	1.82	0.44
8:I:123:LYS:HB2	8:I:127:ARG:HH21	1.82	0.44
1:1:33:DA:H2''	1:1:34:DA:OP1	2.15	0.44
2:2:53:DT:H2'	2:2:54:DT:C4	2.53	0.44
3:A:51:MET:HE2	3:A:51:MET:HA	2.00	0.44
4:C:194:LEU:HD23	4:C:194:LEU:HA	1.79	0.44
5:D:71:LEU:HD12	5:D:71:LEU:HA	1.82	0.44
7:F:288:MET:HG3	7:F:292:VAL:HG21	1.99	0.44
8:H:110:SER:OG	8:H:113:GLN:NE2	2.50	0.44
4:C:156:PHE:HE1	4:C:177:ILE:HD11	1.82	0.44
5:D:1166:GLY:HA3	5:D:1174:ARG:NH2	2.33	0.44
8:H:127:ARG:HA	8:H:130:GLN:O	2.17	0.44
8:I:114:ILE:HG22	8:I:118:ILE:HD11	2.00	0.44
4:C:164:THR:HG23	4:C:164:THR:O	2.18	0.44
4:C:436:ARG:O	4:C:436:ARG:NH1	2.43	0.44
5:D:74:LYS:HE3	5:D:75:TYR:CE2	2.53	0.44
5:D:147:ILE:O	5:D:156:ARG:HD3	2.18	0.44
8:G:39:ILE:HG13	8:G:40:ASP:N	2.32	0.44
8:H:90:LEU:O	8:H:94:GLN:HG3	2.18	0.44
5:D:528:THR:HG22	5:D:532:GLU:OE1	2.18	0.44
5:D:1144:LEU:HD21	5:D:1236:GLU:HG2	1.98	0.44
8:G:100:MET:HE1	8:G:115:TYR:CD1	2.51	0.44
8:H:92:TYR:CE2	8:H:125:HIS:CG	3.06	0.44
8:H:92:TYR:HE2	8:H:125:HIS:HB2	1.81	0.44
8:I:59:ARG:NH1	8:J:86:LEU:HG	2.33	0.44
1:1:52:DA:C8	7:F:429:THR:HG22	2.49	0.44
2:2:71:DG:H2''	2:2:72:DT:H73	1.90	0.44
3:A:191:ARG:HA	3:A:191:ARG:NE	2.33	0.44
4:C:483:ASP:OD1	4:C:485:ASP:N	2.51	0.44
4:C:1339:LEU:HD12	5:D:17:PHE:CG	2.52	0.44
5:D:685:ILE:HG13	5:D:686:TRP:N	2.32	0.44
5:D:1064:SER:HB2	5:D:1072:LYS:HD3	2.00	0.44
1:1:69:DA:H2'	1:1:70:DT:H71	2.00	0.44
1:1:72:DC:H2''	1:1:73:DA:C8	2.53	0.44
2:2:7:DC:H2''	2:2:8:DG:C8	2.52	0.44
4:C:1339:LEU:HD12	5:D:17:PHE:CD1	2.53	0.44
5:D:802:ASP:OD2	5:D:1325:PHE:CG	2.71	0.44

*Continued on next page...*

*Continued from previous page...*

Atom-1	Atom-2	Interatomic distance (Å)	Clash overlap (Å)
7:F:233:ASP:OD1	7:F:233:ASP:N	2.50	0.44
8:G:123:LYS:HD3	8:G:123:LYS:N	2.33	0.44
8:J:120:ARG:C	8:J:120:ARG:HD3	2.43	0.44
3:A:114:ASP:OD1	3:A:114:ASP:N	2.50	0.44
4:C:478:ARG:HH22	4:C:482:GLY:HA3	1.82	0.44
5:D:430:HIS:CD2	5:D:432:LEU:HB2	2.53	0.44
5:D:697:MET:SD	5:D:741:ALA:HB3	2.58	0.44
7:F:346:GLN:HA	7:F:349:GLU:HG2	1.99	0.44
8:H:108:ARG:O	8:H:108:ARG:HG2	2.17	0.44
8:I:120:ARG:HA	8:I:123:LYS:HD2	1.99	0.44
2:2:62:DA:H2''	2:2:63:DA:O5'	2.18	0.43
3:B:118:ASP:OD1	3:B:118:ASP:N	2.51	0.43
4:C:892:GLU:OE1	4:C:893:THR:N	2.49	0.43
5:D:1158:GLU:H	5:D:1158:GLU:HG2	1.62	0.43
3:P:271:LYS:O	3:P:271:LYS:HG2	2.17	0.43
8:I:37:ASP:O	8:I:41:VAL:HG23	2.17	0.43
2:2:42:DG:C2	2:2:43:DA:C4	3.06	0.43
3:B:51:MET:HE1	3:B:219:ARG:HG2	2.00	0.43
4:C:1280:ALA:HB1	5:D:918:ILE:HG23	2.00	0.43
5:D:740:LEU:HD12	5:D:740:LEU:HA	1.80	0.43
7:F:399:LEU:HD21	7:F:403:ASP:HB2	2.00	0.43
8:I:92:TYR:CG	8:I:121:GLN:CB	3.02	0.43
1:1:9:DG:N2	2:2:65:DC:C2	2.83	0.43
4:C:317:LEU:HA	4:C:321:LEU:HD22	2.01	0.43
5:D:377:PHE:O	5:D:380:PHE:N	2.47	0.43
5:D:583:VAL:HG13	5:D:587:LEU:HD12	2.01	0.43
6:E:39:VAL:HG22	6:E:40:PRO:HD2	1.99	0.43
7:F:227:GLN:HB3	7:F:252:LEU:HD13	2.00	0.43
7:F:466:ILE:O	7:F:470:MET:HG2	2.18	0.43
8:H:92:TYR:CG	8:H:121:GLN:HB3	2.53	0.43
8:I:119:ALA:O	8:I:123:LYS:HG3	2.18	0.43
8:J:46:LEU:HD11	8:J:57:LEU:HB3	2.00	0.43
1:1:33:DA:N6	2:2:41:DT:H3	2.17	0.43
1:1:55:DG:H5'	1:1:55:DG:C8	2.53	0.43
3:B:67:GLU:OE1	3:B:67:GLU:N	2.44	0.43
3:B:75:GLN:HG2	3:B:132:HIS:HB2	1.99	0.43
4:C:412:GLU:OE1	4:C:412:GLU:N	2.52	0.43
4:C:616:ILE:HG13	4:C:652:TYR:HB2	1.99	0.43
4:C:1209:GLN:HG2	4:C:1226:THR:HB	2.00	0.43
5:D:1005:LYS:HB3	5:D:1005:LYS:HE2	1.80	0.43
6:E:49:ILE:HG22	6:E:52:ARG:HH21	1.83	0.43

*Continued on next page...*

*Continued from previous page...*

Atom-1	Atom-2	Interatomic distance (Å)	Clash overlap (Å)
2:2:34:DC:H2'	2:2:35:DA:C8	2.54	0.43
3:A:6:THR:OG1	3:A:7:GLU:N	2.51	0.43
4:C:1122:LYS:HE2	4:C:1178:LYS:O	2.19	0.43
4:C:1193:ALA:O	4:C:1197:GLU:HG3	2.18	0.43
5:D:742:GLY:O	5:D:762:ASN:HB3	2.18	0.43
7:F:583:THR:OG1	7:F:586:ARG:HB3	2.18	0.43
8:G:38:LEU:HD21	8:G:65:LEU:HD12	2.01	0.43
8:G:46:LEU:HD22	8:G:57:LEU:HD23	2.00	0.43
2:2:65:DC:H2'	2:2:66:DG:C8	2.53	0.43
4:C:866:ASP:HB3	4:C:872:TYR:CE1	2.53	0.43
4:C:1141:LEU:O	4:C:1145:ILE:HG12	2.18	0.43
4:C:1296:ASP:O	4:C:1320:PRO:HA	2.19	0.43
5:D:27:PRO:HA	5:D:30:ILE:CG2	2.47	0.43
6:E:59:ILE:HA	6:E:63:ILE:HD11	2.00	0.43
7:F:244:THR:O	7:F:247:GLU:HG3	2.19	0.43
2:2:48:DG:C4	2:2:49:DG:C8	3.07	0.43
4:C:229:ILE:HD12	4:C:240:GLU:HG2	2.01	0.43
4:C:591:TYR:OH	4:C:637:ARG:NH2	2.52	0.43
4:C:866:ASP:OD2	4:C:944:ARG:NH1	2.52	0.43
5:D:416:ILE:CD1	5:D:441:LEU:HG	2.49	0.43
5:D:576:ARG:HD3	5:D:593:ASN:HA	1.99	0.43
5:D:992:LYS:HG3	5:D:993:GLU:HG2	2.01	0.43
6:E:60:ASN:O	6:E:64:LEU:N	2.51	0.43
8:H:27:LEU:O	8:H:30:ARG:HG2	2.19	0.43
8:H:74:PHE:CD1	8:H:74:PHE:C	2.97	0.43
8:I:82:ILE:HD13	8:I:82:ILE:HA	1.86	0.43
2:2:69:DC:C1'	2:2:70:DT:H72	2.47	0.43
3:A:50:SER:O	3:A:51:MET:HE2	2.19	0.43
4:C:229:ILE:HA	4:C:332:ARG:HH12	1.83	0.43
5:D:606:ASN:O	5:D:610:ARG:HG2	2.19	0.43
5:D:1158:GLU:HB3	5:D:1223:LEU:HD22	2.00	0.43
5:D:1181:ASP:OD1	5:D:1181:ASP:N	2.52	0.43
7:F:457:ILE:O	7:F:460:ILE:HG12	2.19	0.43
7:F:548:LEU:HD12	7:F:556:ALA:HA	2.01	0.43
3:P:299:SER:HA	3:P:302:GLU:OE1	2.19	0.43
1:1:9:DG:H1	2:2:65:DC:H42	1.65	0.43
3:A:26:VAL:HG11	3:A:217:ILE:HD12	2.01	0.43
4:C:811:ASN:HA	4:C:815:SER:HB2	2.00	0.43
5:D:414:GLU:HA	5:D:417:ARG:HG2	2.00	0.43
5:D:515:ARG:HB2	5:D:545:HIS:CD2	2.53	0.43
5:D:1079:LYS:HE2	5:D:1081:VAL:HG12	2.01	0.43

*Continued on next page...*

*Continued from previous page...*

Atom-1	Atom-2	Interatomic distance (Å)	Clash overlap (Å)
7:F:555:GLU:OE1	7:F:555:GLU:N	2.51	0.43
8:G:57:LEU:HA	8:G:60:LYS:HG2	2.00	0.43
8:H:28:GLU:HG2	8:H:31:TRP:CE3	2.53	0.43
8:I:83:LEU:HD21	8:J:12:ILE:HG23	2.01	0.43
1:1:30:DC:C6	1:1:31:DT:C7	3.02	0.43
1:1:67:DG:H2''	1:1:68:DG:C8	2.54	0.43
3:A:184:ALA:HB2	4:C:1091:GLY:HA3	2.01	0.43
5:D:475:GLU:OE2	6:E:28:ARG:NH2	2.51	0.43
7:F:218:ARG:HH22	7:F:221:PHE:HD2	1.67	0.43
8:G:120:ARG:HH22	8:H:32:PRO:HD2	1.84	0.43
8:H:104:ARG:NH2	8:H:108:ARG:HA	2.33	0.43
2:2:53:DT:H2'	2:2:54:DT:C5	2.55	0.42
2:2:60:DA:O5'	8:G:33:ARG:NH2	2.46	0.42
4:C:46:GLN:HG2	4:C:46:GLN:O	2.18	0.42
4:C:468:LEU:HD13	4:C:468:LEU:HA	1.86	0.42
4:C:746:ALA:HB1	4:C:970:GLY:HA3	2.01	0.42
8:I:90:LEU:O	8:I:94:GLN:HG2	2.19	0.42
8:J:57:LEU:HG	8:J:61:GLN:HE22	1.85	0.42
1:1:29:DA:C2'	1:1:30:DC:C5	3.02	0.42
3:B:86:LYS:HE2	3:B:174:ASP:HB2	1.99	0.42
5:D:441:LEU:HD23	5:D:441:LEU:HA	1.82	0.42
5:D:641:ILE:HD13	5:D:641:ILE:HA	1.82	0.42
7:F:252:LEU:HA	7:F:255:VAL:HG12	2.01	0.42
2:2:15:DG:H2''	2:2:16:DA:C8	2.55	0.42
3:B:145:LYS:HE3	3:B:147:GLN:HG2	2.02	0.42
4:C:292:ILE:HG21	4:C:322:LEU:HD21	2.01	0.42
4:C:667:LEU:HD11	4:C:705:GLU:HG3	2.00	0.42
4:C:678:ARG:HA	4:C:678:ARG:HD2	1.74	0.42
4:C:835:GLU:HB2	4:C:1053:TYR:CE1	2.55	0.42
4:C:978:VAL:HG21	4:C:1014:LEU:HD21	2.00	0.42
5:D:1123:ARG:HA	5:D:1123:ARG:HD2	1.87	0.42
7:F:108:VAL:O	7:F:385:ARG:NH1	2.38	0.42
7:F:136:GLU:CD	7:F:364:ARG:HH21	2.27	0.42
8:H:102:GLU:HA	8:H:105:ARG:HG2	2.00	0.42
4:C:260:LYS:HD2	4:C:262:TYR:CZ	2.55	0.42
4:C:812:PHE:HD2	5:D:461:PHE:HE2	1.66	0.42
4:C:1072:ASN:ND2	4:C:1230:MET:HE1	2.28	0.42
8:H:44:ASN:HA	8:H:47:LYS:HG2	2.01	0.42
8:I:113:GLN:HA	8:I:116:GLN:OE1	2.19	0.42
8:J:5:LEU:C	8:J:5:LEU:HD23	2.44	0.42
2:2:35:DA:H2''	2:2:36:DT:H6	1.85	0.42

*Continued on next page...*



*Continued from previous page...*

Atom-1	Atom-2	Interatomic distance (Å)	Clash overlap (Å)
3:A:234:LEU:HD12	3:A:234:LEU:HA	1.96	0.42
4:C:994:ARG:HD2	4:C:994:ARG:HA	1.78	0.42
5:D:226:ALA:O	5:D:230:SER:CB	2.67	0.42
5:D:743:MET:H	5:D:743:MET:HG2	1.62	0.42
5:D:1219:ASP:O	5:D:1223:LEU:HG	2.19	0.42
7:F:355:ILE:HG22	7:F:359:LYS:HD2	2.02	0.42
3:P:257:VAL:O	3:P:260:LEU:HG	2.19	0.42
3:B:190:ALA:HB3	3:B:198:LEU:HB2	2.01	0.42
3:B:228:LEU:HD23	3:B:228:LEU:HA	1.78	0.42
4:C:52:ALA:O	4:C:55:SER:OG	2.38	0.42
4:C:666:SER:OG	4:C:704:MET:HE3	2.20	0.42
5:D:22:ILE:O	5:D:1339:GLY:HA2	2.19	0.42
5:D:26:SER:OG	5:D:29:MET:HE1	2.20	0.42
5:D:358:GLY:O	5:D:360:TYR:N	2.52	0.42
5:D:1151:LYS:H	5:D:1151:LYS:HG2	1.59	0.42
7:F:546:ASP:OD1	7:F:547:VAL:N	2.52	0.42
1:1:19:DC:H2"	1:1:20:DA:C8	2.55	0.42
1:1:27:DA:H62	7:F:585:GLU:HG3	1.82	0.42
4:C:36:GLN:O	4:C:40:GLU:HG2	2.19	0.42
4:C:206:ALA:HB1	4:C:429:MET:CE	2.49	0.42
4:C:230:PHE:HB2	4:C:333:ILE:HB	2.00	0.42
4:C:465:ARG:HB3	4:C:465:ARG:CZ	2.49	0.42
5:D:143:SER:C	5:D:180:MET:HE2	2.45	0.42
5:D:744:ARG:HH21	5:D:747:MET:HE1	1.84	0.42
5:D:1177:ILE:HG22	5:D:1179:PRO:HD3	2.02	0.42
6:E:7:GLN:O	6:E:10:VAL:HG22	2.19	0.42
8:I:55:ARG:HE	8:I:59:ARG:NH2	2.17	0.42
8:J:42:LEU:HD13	8:J:42:LEU:HA	1.87	0.42
1:1:11:DT:C6	1:1:12:DT:H71	2.55	0.42
2:2:45:DT:H73	7:F:588:ARG:NE	2.30	0.42
5:D:1281:GLU:OE1	5:D:1281:GLU:N	2.38	0.42
3:P:279:GLY:O	3:P:282:VAL:HG22	2.20	0.42
8:G:66:SER:HA	8:H:76:ILE:HD12	2.01	0.42
8:G:120:ARG:HH22	8:H:31:TRP:CD1	2.38	0.42
8:J:120:ARG:O	8:J:124:LEU:HG	2.20	0.42
1:1:2:DA:C5	1:1:3:DC:C4	3.08	0.42
1:1:62:DG:N2	4:C:200:ARG:HB2	2.35	0.42
4:C:473:ARG:HD2	4:C:473:ARG:HA	1.81	0.42
4:C:1294:LYS:O	5:D:348:ASP:HB2	2.20	0.42
5:D:1263:LYS:HE3	5:D:1263:LYS:HB3	1.79	0.42
7:F:229:VAL:HA	7:F:232:ARG:NH1	2.35	0.42

*Continued on next page...*



*Continued from previous page...*

Atom-1	Atom-2	Interatomic distance (Å)	Clash overlap (Å)
7:F:296:LYS:HA	7:F:296:LYS:HD2	1.78	0.42
4:C:538:LEU:HD12	4:C:538:LEU:H	1.85	0.42
4:C:890:LYS:HB3	4:C:890:LYS:HE2	1.73	0.42
5:D:1034:PHE:HA	5:D:1114:GLN:HB3	2.01	0.42
5:D:1160:SER:OG	5:D:1161:GLY:N	2.53	0.42
6:E:75:GLN:O	6:E:79:GLU:HG2	2.20	0.42
7:F:117:ILE:O	7:F:121:LYS:HG2	2.19	0.42
7:F:456:MET:HE2	7:F:500:ILE:HD11	2.02	0.42
8:G:69:LEU:C	8:H:76:ILE:HD11	2.45	0.42
8:H:109:LEU:O	8:H:114:ILE:HD11	2.20	0.42
8:I:36:VAL:HG11	8:J:124:LEU:HD13	2.02	0.42
8:I:108:ARG:NH2	8:I:109:LEU:HD12	2.35	0.42
5:D:197:GLU:N	5:D:197:GLU:OE1	2.53	0.41
7:F:288:MET:HA	7:F:292:VAL:HB	2.01	0.41
8:H:95:PHE:CG	8:H:118:ILE:HD13	2.55	0.41
8:H:125:HIS:HA	8:H:128:ARG:HB2	2.02	0.41
8:I:32:PRO:HA	8:J:77:PRO:HG3	2.01	0.41
8:I:125:HIS:HA	8:I:128:ARG:CD	2.50	0.41
4:C:378:ARG:HA	4:C:378:ARG:HD2	1.95	0.41
5:D:35:PHE:CD1	5:D:101:ARG:HD2	2.55	0.41
7:F:264:LYS:HD3	7:F:264:LYS:H	1.85	0.41
3:P:307:LEU:HA	3:P:310:ARG:HG2	2.01	0.41
8:I:48:ARG:HG2	8:I:48:ARG:HH11	1.85	0.41
8:J:80:ASP:OD1	8:J:80:ASP:C	2.63	0.41
4:C:260:LYS:HB3	4:C:262:TYR:CZ	2.55	0.41
4:C:1230:MET:HG2	4:C:1232:MET:HE3	2.01	0.41
4:C:1288:GLN:NE2	4:C:1317:PRO:HG3	2.35	0.41
5:D:29:MET:H	5:D:29:MET:CE	2.31	0.41
5:D:222:LYS:HD3	5:D:222:LYS:HA	1.86	0.41
7:F:490:PRO:HG2	7:F:493:LYS:HG3	2.01	0.41
8:I:31:TRP:HZ3	8:J:120:ARG:NH2	2.15	0.41
4:C:149:LEU:HD11	4:C:451:ARG:HB3	2.01	0.41
4:C:799:ASN:OD1	4:C:799:ASN:N	2.52	0.41
4:C:818:VAL:HG13	4:C:1079:ILE:HD13	2.01	0.41
4:C:1328:LYS:HD2	4:C:1328:LYS:HA	1.82	0.41
5:D:108:ALA:HB2	5:D:280:LYS:HG2	2.02	0.41
5:D:490:ILE:HD12	5:D:500:ILE:HD13	2.02	0.41
5:D:806:ASP:OD1	5:D:806:ASP:N	2.53	0.41
5:D:1084:GLN:HE21	5:D:1086:ASN:HD21	1.66	0.41
7:F:511:ILE:HD13	7:F:511:ILE:HA	1.87	0.41
7:F:608:ARG:HH12	8:J:48:ARG:NE	2.15	0.41

*Continued on next page...*

*Continued from previous page...*

Atom-1	Atom-2	Interatomic distance (Å)	Clash overlap (Å)
2:2:57:DG:H3'	8:I:113:GLN:CG	2.37	0.41
5:D:1046:ILE:HG22	5:D:1061:VAL:HG22	2.02	0.41
5:D:1056:LEU:HD12	5:D:1110:GLU:HG3	2.03	0.41
5:D:1342:ASP:N	5:D:1342:ASP:OD1	2.53	0.41
7:F:255:VAL:O	7:F:258:GLN:HG2	2.20	0.41
3:P:269:CYS:SG	3:P:270:LEU:N	2.93	0.41
8:G:59:ARG:O	8:G:63:VAL:HG22	2.20	0.41
8:G:102:GLU:O	8:G:105:ARG:HG3	2.21	0.41
8:I:47:LYS:HZ1	8:J:3:HIS:H	1.68	0.41
8:I:53:ASN:HB3	8:I:56:GLU:OE1	2.20	0.41
8:J:11:ALA:O	8:J:15:LEU:HG	2.20	0.41
8:J:40:ASP:HA	8:J:43:GLU:HB2	2.03	0.41
1:1:18:DC:C2'	1:1:19:DC:C6	2.99	0.41
4:C:522:SER:HA	4:C:525:THR:HG22	2.02	0.41
5:D:442:ILE:HD13	5:D:448:GLN:HG3	2.02	0.41
5:D:677:GLU:H	5:D:677:GLU:HG3	1.65	0.41
5:D:857:LEU:HD12	5:D:868:TRP:CE3	2.56	0.41
5:D:1274:PHE:HD2	5:D:1275:LEU:HD22	1.86	0.41
6:E:52:ARG:O	6:E:55:GLU:HB2	2.20	0.41
8:G:12:ILE:O	8:G:16:ILE:HG13	2.21	0.41
8:I:82:ILE:HG21	8:J:63:VAL:HG12	2.01	0.41
2:2:40:DT:C2'	2:2:41:DT:C7	2.95	0.41
5:D:511:TYR:CG	5:D:728:SER:HB3	2.56	0.41
5:D:1264:ALA:N	5:D:1278:GLU:O	2.51	0.41
5:D:1271:SER:HB3	5:D:1290:ARG:HH12	1.86	0.41
7:F:309:ASN:OD1	7:F:315:TRP:NE1	2.52	0.41
8:I:78:CYS:CB	8:J:71:GLY:H	2.34	0.41
8:J:40:ASP:OD2	8:J:41:VAL:N	2.54	0.41
3:B:77:ASP:OD1	3:B:78:ILE:N	2.47	0.41
4:C:260:LYS:HD2	4:C:262:TYR:CE2	2.55	0.41
4:C:564:PRO:O	4:C:569:ILE:HA	2.21	0.41
4:C:705:GLU:HA	4:C:708:VAL:HG12	2.03	0.41
5:D:892:PHE:HB3	5:D:1345:ARG:NH2	2.36	0.41
5:D:1268:ASN:HD22	5:D:1301:THR:HG22	1.85	0.41
7:F:290:LEU:HD11	7:F:337:VAL:HG23	2.03	0.41
7:F:323:ASN:OD1	7:F:323:ASN:N	2.53	0.41
7:F:555:GLU:O	7:F:558:VAL:HG12	2.21	0.41
8:G:36:VAL:HA	8:G:39:ILE:HG12	2.02	0.41
8:I:47:LYS:HD2	8:J:4:ASP:OD2	2.19	0.41
8:I:55:ARG:CG	8:I:59:ARG:HH21	2.33	0.41
8:I:124:LEU:HD23	8:I:127:ARG:CZ	2.51	0.41

*Continued on next page...*

*Continued from previous page...*

Atom-1	Atom-2	Interatomic distance (Å)	Clash overlap (Å)
1:1:4:DA:H2'	1:1:5:DG:C8	2.56	0.41
1:1:52:DA:H2'	7:F:429:THR:HG22	2.03	0.41
3:A:131:CYS:SG	3:A:132:HIS:N	2.94	0.41
3:B:79:LEU:HD13	3:B:79:LEU:HA	1.96	0.41
3:B:110:VAL:HG12	3:B:131:CYS:H	1.86	0.41
4:C:232:ILE:H	4:C:331:LYS:HG3	1.86	0.41
4:C:483:ASP:CG	4:C:486:THR:HG22	2.46	0.41
4:C:812:PHE:HB3	5:D:357:VAL:HG21	2.03	0.41
4:C:947:GLU:O	4:C:950:GLU:HG3	2.20	0.41
4:C:949:GLU:OE2	4:C:1037:THR:HA	2.20	0.41
4:C:1313:HIS:O	5:D:473:THR:OG1	2.30	0.41
5:D:151:MET:HE2	5:D:151:MET:HB3	1.94	0.41
5:D:205:LEU:HD23	5:D:205:LEU:HA	1.72	0.41
7:F:122:ARG:HE	7:F:371:LYS:NZ	2.15	0.41
7:F:364:ARG:O	7:F:367:ILE:HD12	2.19	0.41
8:I:80:ASP:O	8:I:83:LEU:N	2.54	0.41
8:J:45:GLU:HA	8:J:48:ARG:CZ	2.50	0.41
8:J:46:LEU:HD13	8:J:54:PRO:HA	2.03	0.41
3:A:59:VAL:HG21	3:A:85:LEU:HD13	2.02	0.41
3:A:155:ALA:HA	3:A:158:ARG:HH11	1.86	0.41
3:A:155:ALA:HA	3:A:158:ARG:NH1	2.36	0.41
4:C:777:VAL:HG21	4:C:783:LEU:HD21	2.03	0.41
5:D:209:ASN:HA	5:D:214:ARG:HE	1.86	0.41
5:D:269:TYR:HA	5:D:272:VAL:HG22	2.03	0.41
5:D:490:ILE:HG22	5:D:491:LEU:HD23	2.03	0.41
5:D:1030:GLU:HG2	5:D:1031:VAL:HG13	2.03	0.41
7:F:341:LEU:O	7:F:345:GLN:HG2	2.21	0.41
7:F:457:ILE:HA	7:F:460:ILE:HG12	2.02	0.41
8:I:32:PRO:O	8:I:33:ARG:C	2.64	0.41
8:J:46:LEU:HD22	8:J:54:PRO:HB3	2.03	0.41
1:1:14:DT:H2''	1:1:15:DG:C8	2.56	0.40
1:1:20:DA:C5	1:1:21:DA:C5	3.09	0.40
2:2:46:DG:H1'	2:2:47:DT:H5'	2.02	0.40
4:C:49:LEU:HD13	4:C:49:LEU:HA	1.90	0.40
4:C:556:GLY:O	4:C:589:THR:OG1	2.34	0.40
5:D:596:LEU:HA	5:D:596:LEU:HD12	1.89	0.40
5:D:686:TRP:CD2	5:D:758:PRO:HG3	2.56	0.40
8:H:84:THR:HA	8:H:87:ARG:HB3	2.03	0.40
3:B:33:ARG:HB2	3:B:197:ASP:OD1	2.22	0.40
5:D:35:PHE:CE1	5:D:101:ARG:HD2	2.56	0.40
5:D:515:ARG:HD2	5:D:515:ARG:HA	1.85	0.40

*Continued on next page...*

Continued from previous page...

Atom-1	Atom-2	Interatomic distance (Å)	Clash overlap (Å)
7:F:292:VAL:HG22	7:F:297:MET:SD	2.61	0.40
8:G:41:VAL:HG12	8:H:64:ALA:HB1	2.02	0.40
1:1:10:DA:C2'	1:1:11:DT:H71	2.45	0.40
3:B:51:MET:HE2	3:B:51:MET:HA	2.03	0.40
4:C:225:PHE:HE2	4:C:347:ILE:HB	1.85	0.40
5:D:885:VAL:HG13	5:D:894:VAL:HG11	2.03	0.40
7:F:605:GLU:OE1	7:F:605:GLU:N	2.53	0.40
8:G:89:ASP:OD2	8:H:55:ARG:NH2	2.51	0.40
8:I:47:LYS:NZ	8:J:3:HIS:N	2.69	0.40
8:J:101:GLU:O	8:J:104:ARG:HB3	2.22	0.40
3:A:123:ILE:HD13	3:A:123:ILE:HA	1.95	0.40
3:A:231:PHE:HB3	3:B:221:ALA:HB2	2.04	0.40
3:B:145:LYS:HD2	3:B:145:LYS:HA	1.85	0.40
5:D:452:LEU:HD23	5:D:452:LEU:HA	1.85	0.40
6:E:42:GLU:OE2	6:E:52:ARG:NH1	2.55	0.40
7:F:277:MET:HG3	7:F:362:ASN:CG	2.46	0.40
3:B:61:ILE:HG12	3:B:142:MET:CB	2.51	0.40
3:B:205:MET:HE2	3:B:205:MET:HB2	1.84	0.40
4:C:642:SER:HB2	5:D:770:LEU:HD21	2.04	0.40
4:C:678:ARG:NH2	4:C:1071:GLY:O	2.54	0.40
4:C:1122:LYS:HD3	4:C:1122:LYS:HA	1.86	0.40
4:C:1211:ARG:NH1	4:C:1220:GLN:OE1	2.54	0.40
5:D:1172:LYS:HA	5:D:1192:LYS:NZ	2.37	0.40
8:H:105:ARG:HH22	8:J:72:ARG:HD3	1.87	0.40
8:I:68:PHE:C	8:I:68:PHE:CD2	2.99	0.40

There are no symmetry-related clashes.

## 5.3 Torsion angles

### 5.3.1 Protein backbone

In the following table, the Percentiles column shows the percent Ramachandran outliers of the chain as a percentile score with respect to all PDB entries followed by that with respect to all EM entries.

The Analysed column shows the number of residues for which the backbone conformation was analysed, and the total number of residues.

Mol	Chain	Analysed	Favoured	Allowed	Outliers	Percentiles	
3	A	228/329 (69%)	222 (97%)	6 (3%)	0	100	100

Continued on next page...

*Continued from previous page...*

Mol	Chain	Analysed	Favoured	Allowed	Outliers	Percentiles	
3	B	226/329 (69%)	218 (96%)	8 (4%)	0	100	100
3	P	67/329 (20%)	63 (94%)	4 (6%)	0	100	100
4	C	1338/1342 (100%)	1296 (97%)	42 (3%)	0	100	100
5	D	1322/1407 (94%)	1266 (96%)	56 (4%)	0	100	100
6	E	77/91 (85%)	74 (96%)	3 (4%)	0	100	100
7	F	490/613 (80%)	468 (96%)	22 (4%)	0	100	100
8	G	122/140 (87%)	118 (97%)	4 (3%)	0	100	100
8	H	103/140 (74%)	99 (96%)	4 (4%)	0	100	100
8	I	106/140 (76%)	99 (93%)	7 (7%)	0	100	100
8	J	127/140 (91%)	122 (96%)	5 (4%)	0	100	100
All	All	4206/5000 (84%)	4045 (96%)	161 (4%)	0	100	100

There are no Ramachandran outliers to report.

### 5.3.2 Protein sidechains ⓘ

In the following table, the Percentiles column shows the percent sidechain outliers of the chain as a percentile score with respect to all PDB entries followed by that with respect to all EM entries.

The Analysed column shows the number of residues for which the sidechain conformation was analysed, and the total number of residues.

Mol	Chain	Analysed	Rotameric	Outliers	Percentiles	
3	A	198/286 (69%)	198 (100%)	0	100	100
3	B	196/286 (68%)	195 (100%)	1 (0%)	86	92
3	P	63/286 (22%)	63 (100%)	0	100	100
4	C	1152/1157 (100%)	1148 (100%)	4 (0%)	91	95
5	D	1115/1168 (96%)	1111 (100%)	4 (0%)	89	93
6	E	67/75 (89%)	66 (98%)	1 (2%)	60	79
7	F	430/540 (80%)	428 (100%)	2 (0%)	86	92
8	G	112/128 (88%)	111 (99%)	1 (1%)	75	87
8	H	96/128 (75%)	94 (98%)	2 (2%)	48	72
8	I	97/128 (76%)	95 (98%)	2 (2%)	48	72
8	J	117/128 (91%)	117 (100%)	0	100	100

*Continued on next page...*

*Continued from previous page...*

Mol	Chain	Analysed	Rotameric	Outliers	Percentiles
All	All	3643/4310 (84%)	3626 (100%)	17 (0%)	85 92

All (17) residues with a non-rotameric sidechain are listed below:

Mol	Chain	Res	Type
3	B	47	LEU
4	C	277	LEU
4	C	351	LEU
4	C	610	GLU
4	C	1274	GLU
5	D	159	ILE
5	D	571	ASP
5	D	982	LEU
5	D	1195	GLN
6	E	44	ASP
7	F	363	ARG
7	F	402	LEU
8	G	76	ILE
8	H	35	VAL
8	H	127	ARG
8	I	33	ARG
8	I	65	LEU

Sometimes sidechains can be flipped to improve hydrogen bonding and reduce clashes. All (37) such sidechains are listed below:

Mol	Chain	Res	Type
3	A	18	GLN
3	B	84	ASN
4	C	214	ASN
4	C	273	HIS
4	C	450	ASN
4	C	463	GLN
4	C	613	ASN
4	C	762	ASN
4	C	1008	GLN
4	C	1209	GLN
4	C	1236	ASN
4	C	1264	GLN
4	C	1268	GLN
5	D	157	GLN
5	D	266	ASN

*Continued on next page...*

*Continued from previous page...*

Mol	Chain	Res	Type
5	D	341	ASN
5	D	465	GLN
5	D	469	HIS
5	D	495	ASN
5	D	1244	GLN
5	D	1279	GLN
5	D	1350	ASN
5	D	1366	HIS
7	F	283	GLN
7	F	362	ASN
7	F	409	ASN
7	F	472	GLN
8	G	61	GLN
8	G	125	HIS
8	H	73	GLN
8	H	113	GLN
8	H	125	HIS
8	H	129	HIS
8	I	44	ASN
8	I	61	GLN
8	I	129	HIS
8	J	106	GLN

### 5.3.3 RNA [i](#)

There are no RNA molecules in this entry.

### 5.4 Non-standard residues in protein, DNA, RNA chains [i](#)

There are no non-standard protein/DNA/RNA residues in this entry.

### 5.5 Carbohydrates [i](#)

There are no oligosaccharides in this entry.

### 5.6 Ligand geometry [i](#)

There are no ligands in this entry.

## 5.7 Other polymers [i](#)

There are no such residues in this entry.

## 5.8 Polymer linkage issues [i](#)

There are no chain breaks in this entry.



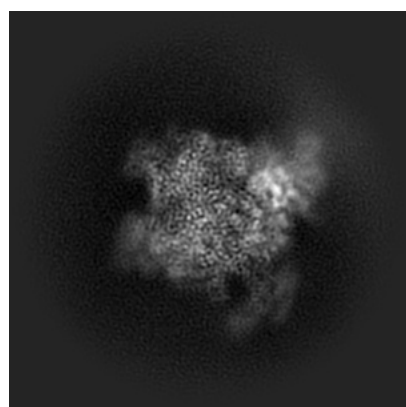
## 6 Map visualisation [i](#)

This section contains visualisations of the EMDB entry EMD-62727. These allow visual inspection of the internal detail of the map and identification of artifacts.

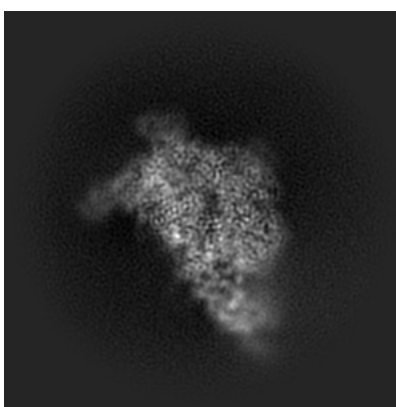
No raw map or half-maps were deposited for this entry and therefore no images, graphs, etc. pertaining to the raw map can be shown.

### 6.1 Orthogonal projections [i](#)

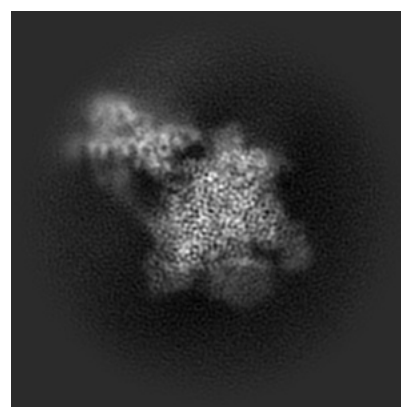
#### 6.1.1 Primary map



X



Y

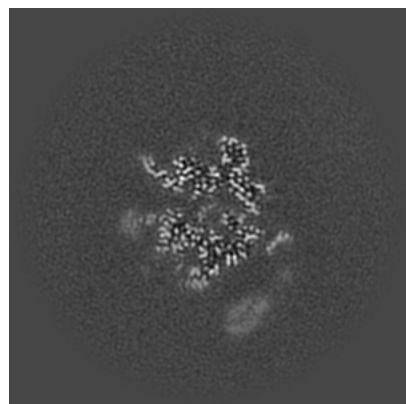


Z

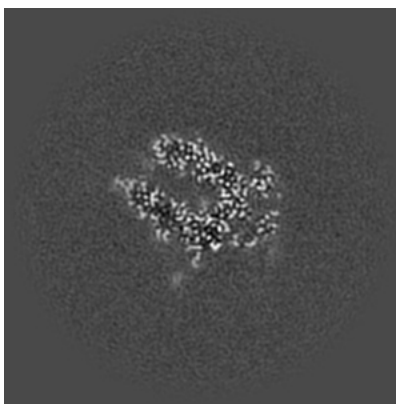
The images above show the map projected in three orthogonal directions.

### 6.2 Central slices [i](#)

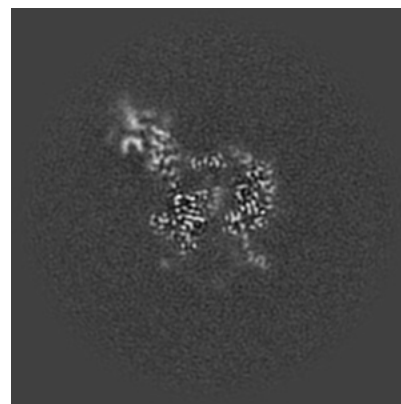
#### 6.2.1 Primary map



X Index: 128



Y Index: 128

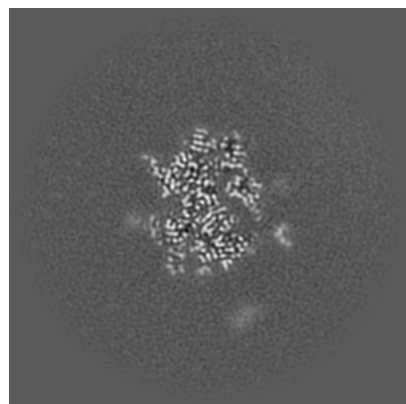


Z Index: 128

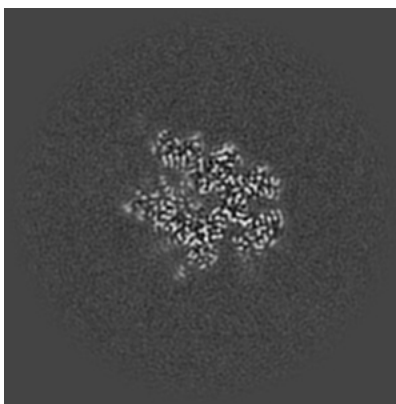
The images above show central slices of the map in three orthogonal directions.

## 6.3 Largest variance slices [i](#)

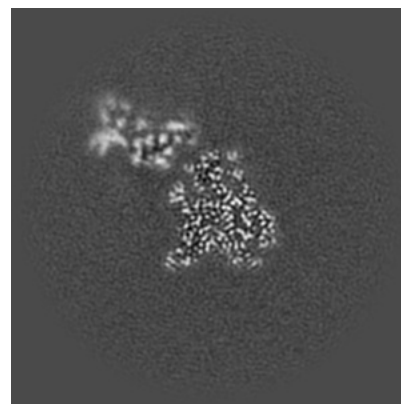
### 6.3.1 Primary map



X Index: 121



Y Index: 122

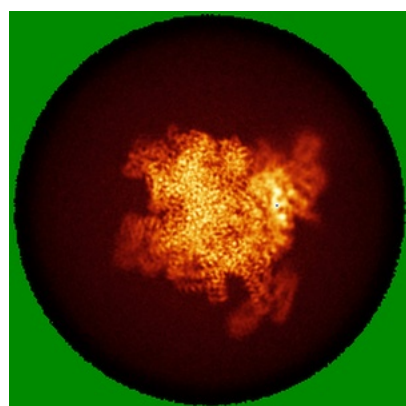


Z Index: 140

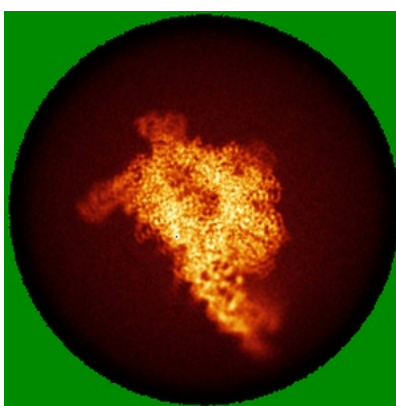
The images above show the largest variance slices of the map in three orthogonal directions.

## 6.4 Orthogonal standard-deviation projections (False-color) [i](#)

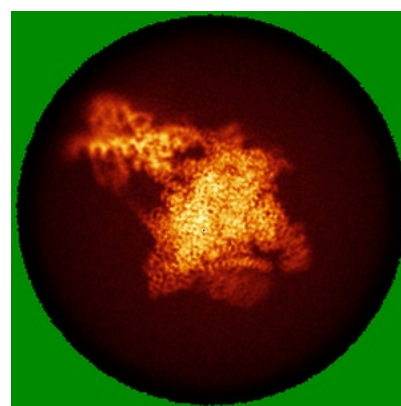
### 6.4.1 Primary map



X



Y



Z

The images above show the map standard deviation projections with false color in three orthogonal directions. Minimum values are shown in green, max in blue, and dark to light orange shades represent small to large values respectively.

## 6.5 Orthogonal surface views [i](#)

### 6.5.1 Primary map



The images above show the 3D surface view of the map at the recommended contour level 0.05. These images, in conjunction with the slice images, may facilitate assessment of whether an appropriate contour level has been provided.

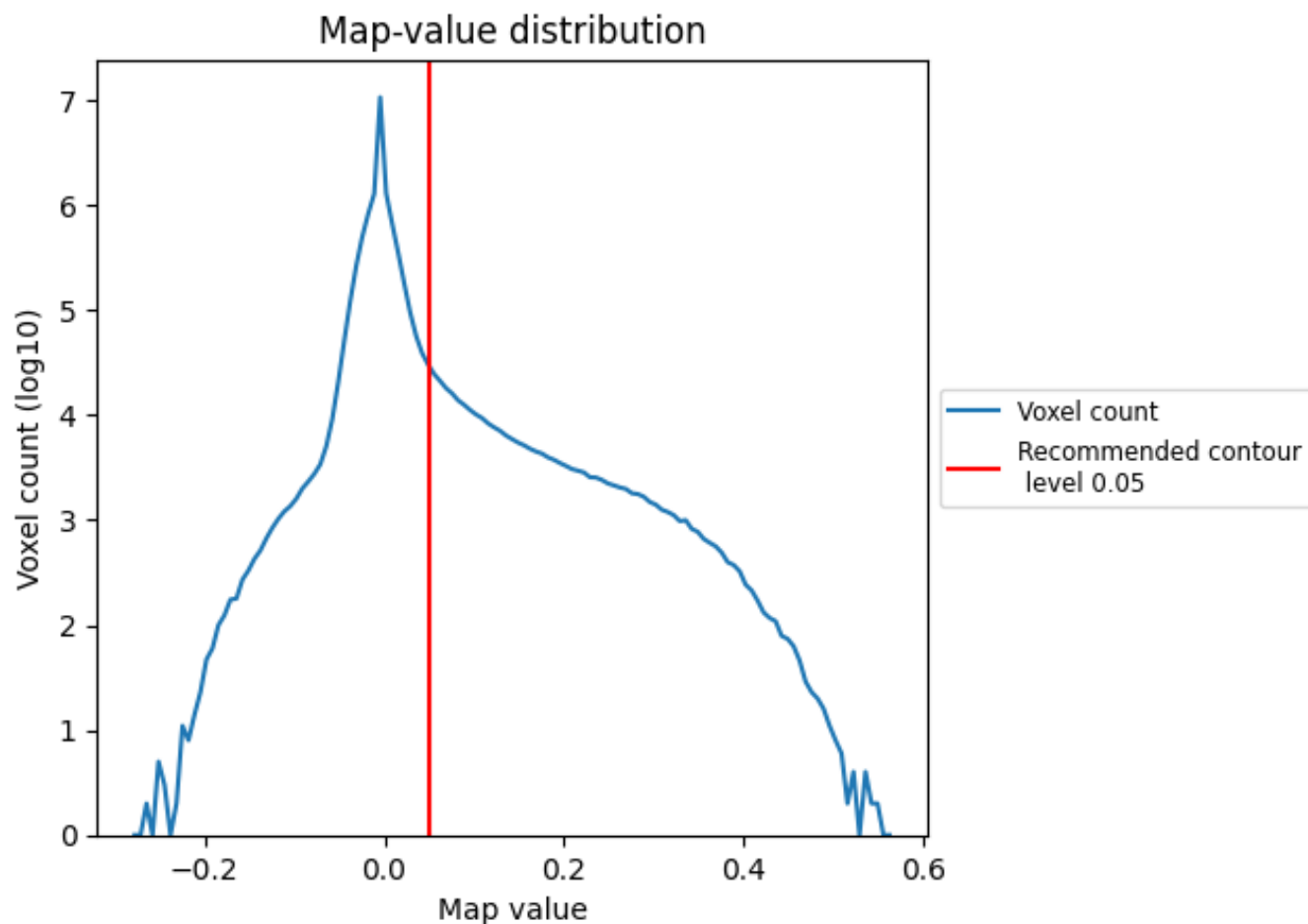
## 6.6 Mask visualisation [i](#)

This section was not generated. No masks/segmentation were deposited.

## 7 Map analysis [i](#)

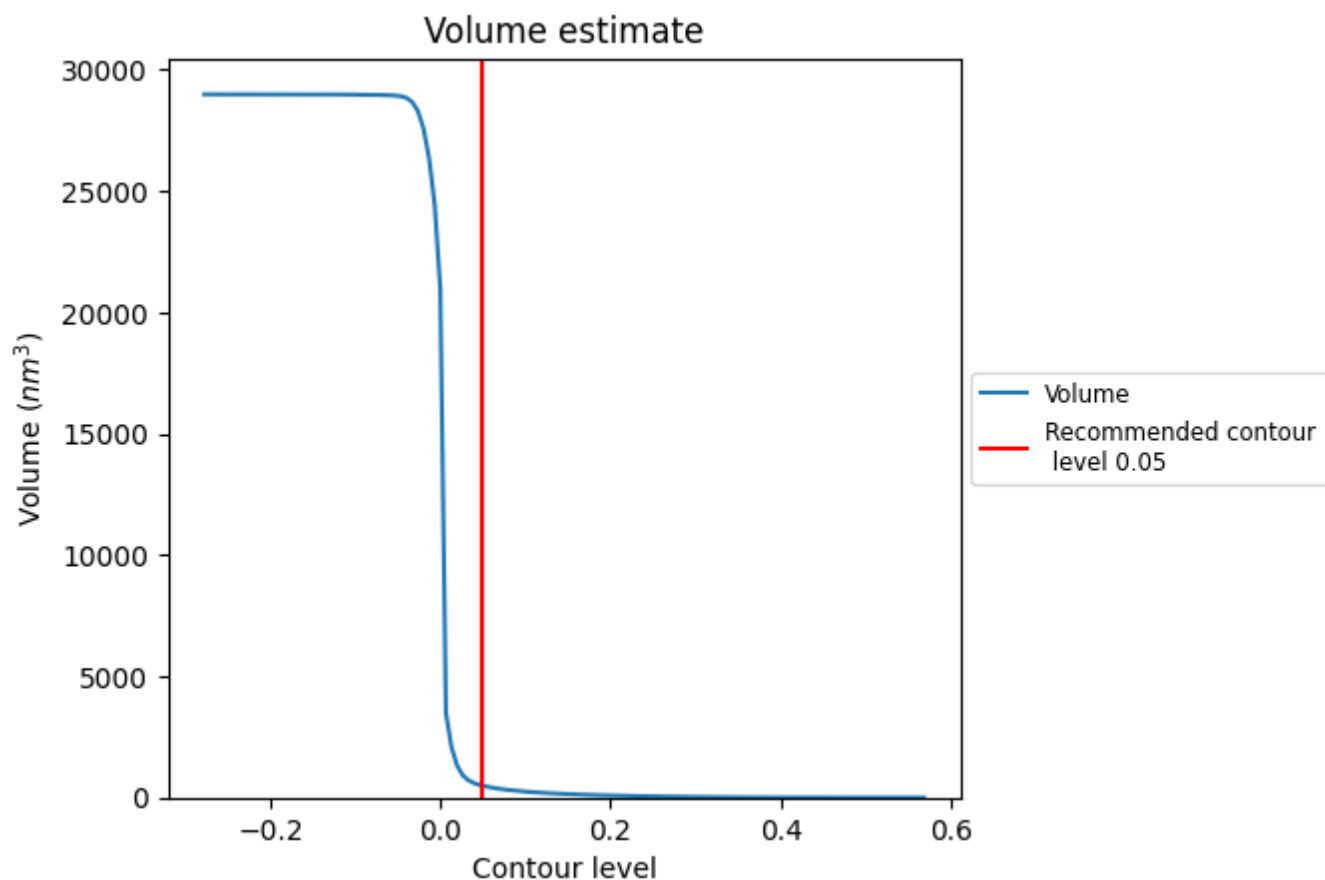
This section contains the results of statistical analysis of the map.

### 7.1 Map-value distribution [i](#)



The map-value distribution is plotted in 128 intervals along the x-axis. The y-axis is logarithmic. A spike in this graph at zero usually indicates that the volume has been masked.

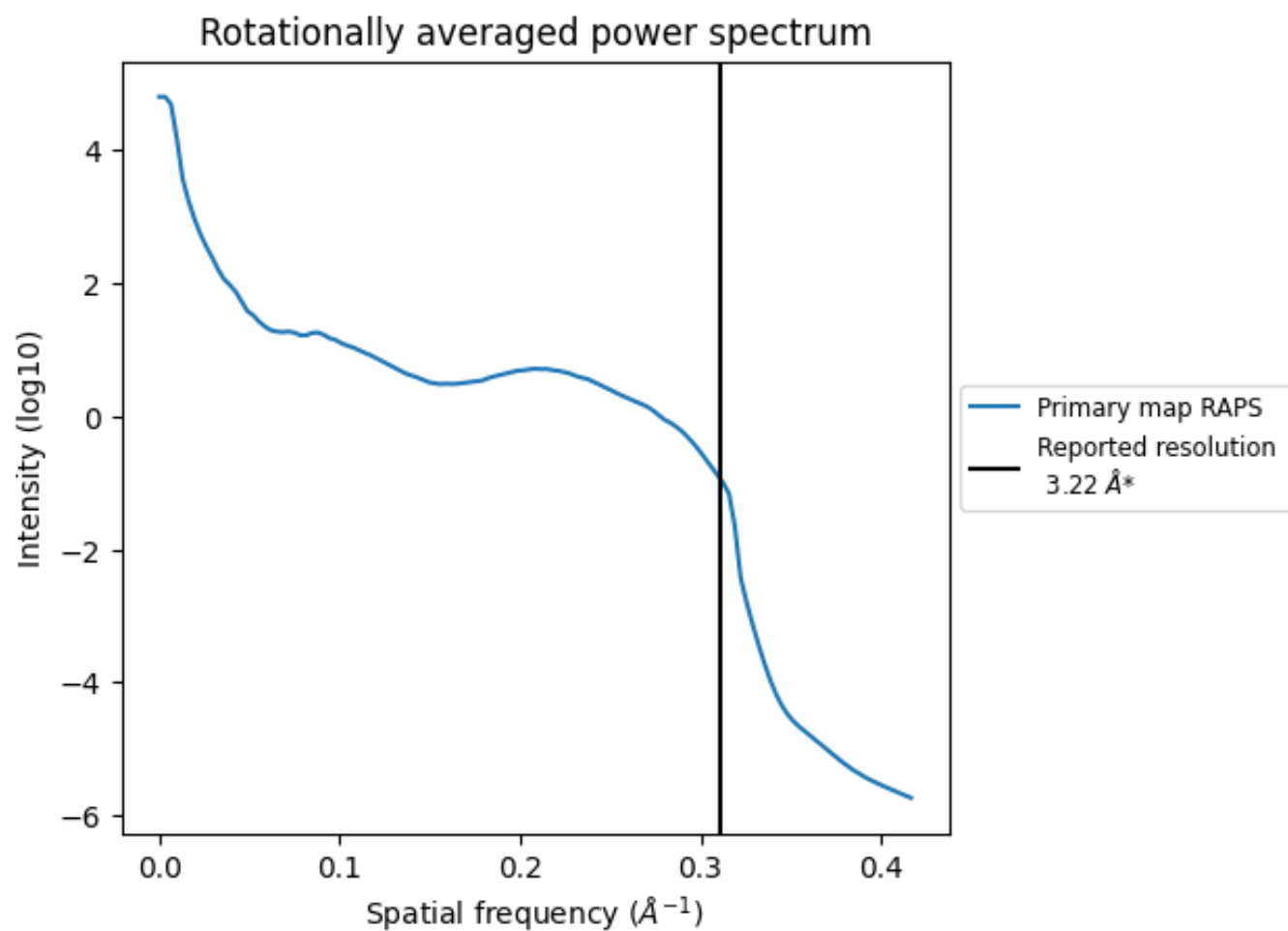
## 7.2 Volume estimate [i](#)



The volume at the recommended contour level is 487 nm<sup>3</sup>; this corresponds to an approximate mass of 440 kDa.

The volume estimate graph shows how the enclosed volume varies with the contour level. The recommended contour level is shown as a vertical line and the intersection between the line and the curve gives the volume of the enclosed surface at the given level.

### 7.3 Rotationally averaged power spectrum ⓘ



\*Reported resolution corresponds to spatial frequency of 0.311 Å<sup>-1</sup>

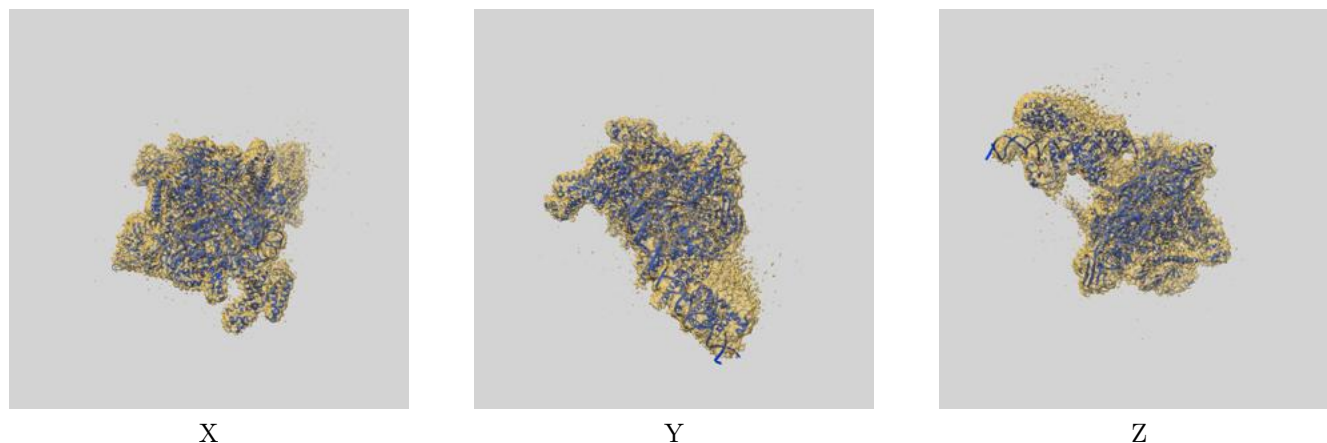
## 8 Fourier-Shell correlation

This section was not generated. No FSC curve or half-maps provided.

## 9 Map-model fit [i](#)

This section contains information regarding the fit between EMDB map EMD-62727 and PDB model 9L0X. Per-residue inclusion information can be found in [section 3](#) on [page 6](#).

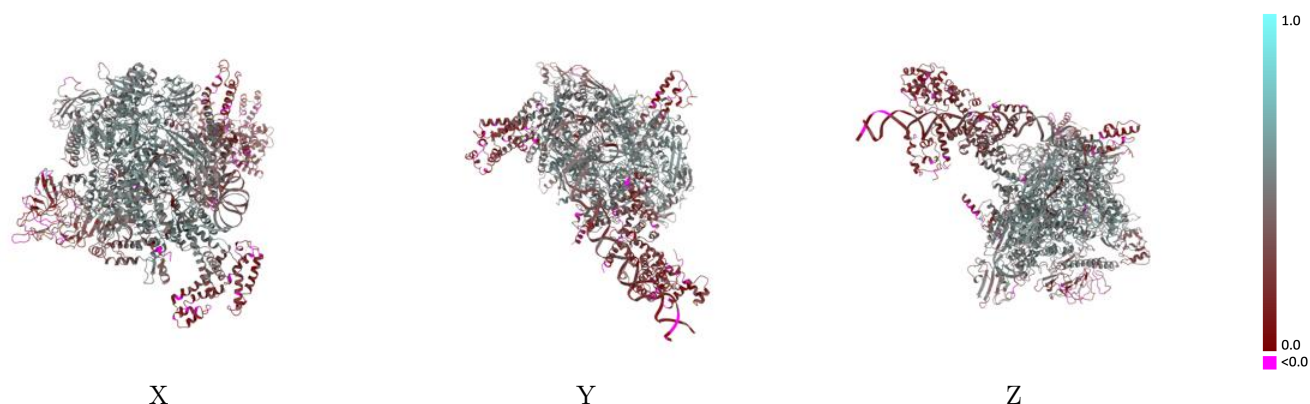
### 9.1 Map-model overlay [i](#)



The images above show the 3D surface view of the map at the recommended contour level 0.05 at 50% transparency in yellow overlaid with a ribbon representation of the model coloured in blue. These images allow for the visual assessment of the quality of fit between the atomic model and the map.



## 9.2 Q-score mapped to coordinate model [i](#)



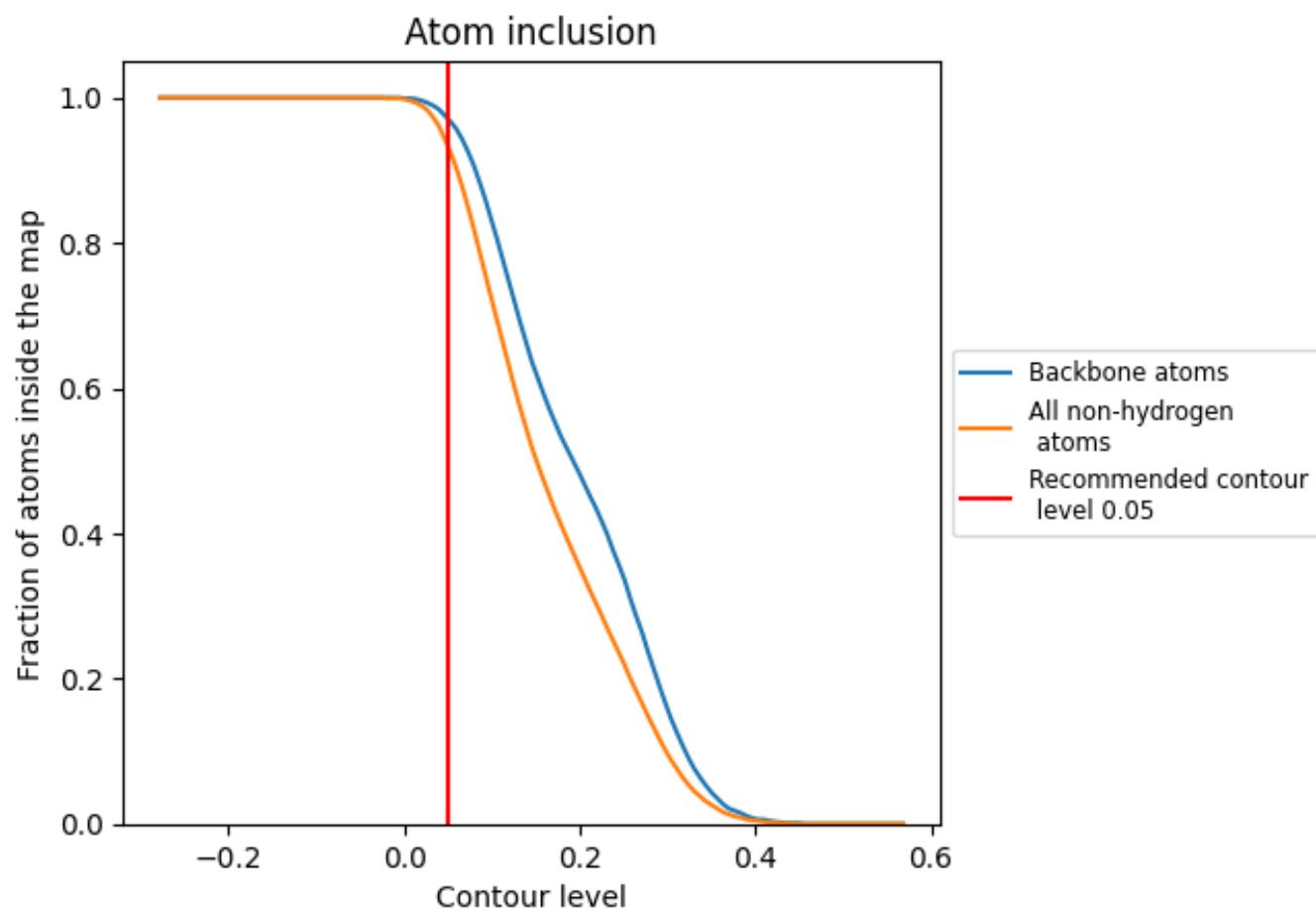
The images above show the model with each residue coloured according to its Q-score. This shows their resolvability in the map with higher Q-score values reflecting better resolvability. Please note: Q-score is calculating the resolvability of atoms, and thus high values are only expected at resolutions at which atoms can be resolved. Low Q-score values may therefore be expected for many entries.

## 9.3 Atom inclusion mapped to coordinate model [i](#)



The images above show the model with each residue coloured according to its atom inclusion. This shows to what extent they are inside the map at the recommended contour level (0.05).



























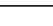
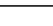
## 9.4 Atom inclusion [i](#)



At the recommended contour level, 97% of all backbone atoms, 93% of all non-hydrogen atoms, are inside the map.

## 9.5 Map-model fit summary

The table lists the average atom inclusion at the recommended contour level (0.05) and Q-score for the entire model and for each chain.

Chain	Atom inclusion	Q-score
All	 0.9330	 0.4030
1	 0.9450	 0.3250
2	 0.9110	 0.2880
A	 0.9650	 0.4990
B	 0.9400	 0.4380
C	 0.9500	 0.4760
D	 0.9340	 0.4490
E	 0.8720	 0.3310
F	 0.8840	 0.3300
G	 0.9660	 0.1910
H	 0.9460	 0.1860
I	 0.9140	 0.2250
J	 0.9420	 0.2640
P	 0.8430	 0.1750

