



Full wwPDB X-ray Structure Validation Report ⓘ

Jul 16, 2025 – 06:31 PM JST

PDB ID : 9KWW / pdb_00009kww
Title : Crystal structure of *S. aureus* tryptophanyl-tRNA synthetase complexed with 3-demethylchuangxinmycin
Authors : Ren, Y.; Qiao, H.; Wang, S.; Liu, W.; Fang, P.
Deposited on : 2024-12-06
Resolution : 2.12 Å(reported)

This is a Full wwPDB X-ray Structure Validation Report for a publicly released PDB entry.

We welcome your comments at validation@mail.wwpdb.org

A user guide is available at

<https://www.wwpdb.org/validation/2017/XrayValidationReportHelp>

with specific help available everywhere you see the ⓘ symbol.

The types of validation reports are described at

<http://www.wwpdb.org/validation/2017/FAQs#types>.

The following versions of software and data (see [references ⓘ](#)) were used in the production of this report:

MolProbity : 4-5-2 with Phenix2.0rc1
Mogul : 1.8.5 (274361), CSD as541be (2020)
Xtriage (Phenix) : 2.0rc1
EDS : 3.0
buster-report : 1.1.7 (2018)
Percentile statistics : 20231227.v01 (using entries in the PDB archive December 27th 2023)
CCP4 : 9.0.006 (Gargrove)
Density-Fitness : 1.0.12
Ideal geometry (proteins) : Engh & Huber (2001)
Ideal geometry (DNA, RNA) : Parkinson et al. (1996)
Validation Pipeline (wwPDB-VP) : 2.44

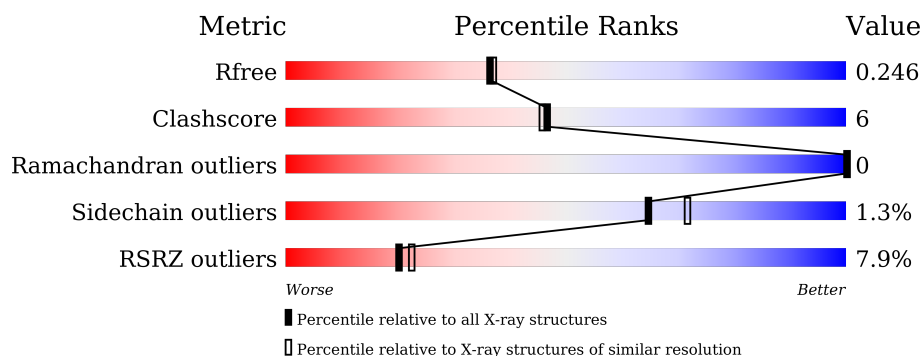
1 Overall quality at a glance

The following experimental techniques were used to determine the structure:

X-RAY DIFFRACTION

The reported resolution of this entry is 2.12 Å.

Percentile scores (ranging between 0-100) for global validation metrics of the entry are shown in the following graphic. The table shows the number of entries on which the scores are based.



Metric	Whole archive (#Entries)	Similar resolution (#Entries, resolution range(Å))
R_{free}	164625	7689 (2.14-2.10)
Clashscore	180529	8431 (2.14-2.10)
Ramachandran outliers	177936	8366 (2.14-2.10)
Sidechain outliers	177891	8367 (2.14-2.10)
RSRZ outliers	164620	7689 (2.14-2.10)

The table below summarises the geometric issues observed across the polymeric chains and their fit to the electron density. The red, orange, yellow and green segments of the lower bar indicate the fraction of residues that contain outliers for ≥ 3 , 2, 1 and 0 types of geometric quality criteria respectively. A grey segment represents the fraction of residues that are not modelled. The numeric value for each fraction is indicated below the corresponding segment, with a dot representing fractions $\leq 5\%$. The upper red bar (where present) indicates the fraction of residues that have poor fit to the electron density. The numeric value is given above the bar.

Mol	Chain	Length	Quality of chain
1	A	335	<div> <div>4%</div> <div> <div></div> <div>83%</div> <div>13%</div> <div>.</div> </div> </div>
1	B	335	<div> <div>14%</div> <div> <div></div> <div>81%</div> <div>15%</div> <div>.</div> </div> </div>
1	C	335	<div> <div>5%</div> <div> <div></div> <div>84%</div> <div>10%</div> <div>5%</div> </div> </div>

2 Entry composition

There are 3 unique types of molecules in this entry. The entry contains 8012 atoms, of which 0 are hydrogens and 0 are deuteriums.

In the tables below, the ZeroOcc column contains the number of atoms modelled with zero occupancy, the AltConf column contains the number of residues with at least one atom in alternate conformation and the Trace column contains the number of residues modelled with at most 2 atoms.

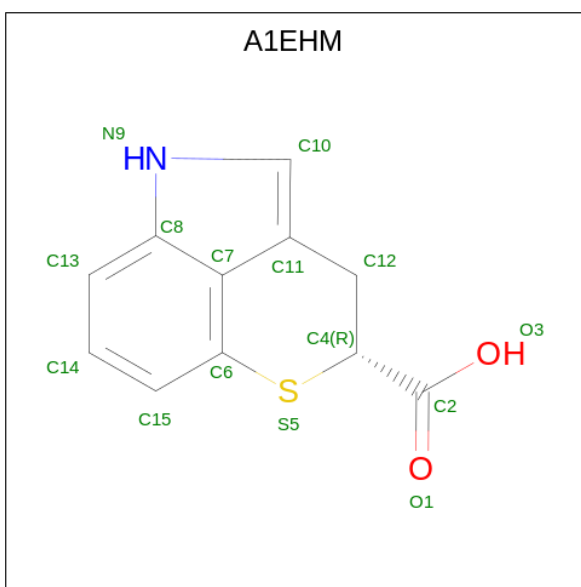
- Molecule 1 is a protein called Tryptophan-tRNA ligase.

Mol	Chain	Residues	Atoms					ZeroOcc	AltConf	Trace
1	A	321	Total	C	N	O	S	0	0	0
			2527	1605	429	480	13			
1	B	321	Total	C	N	O	S	0	0	0
			2496	1584	426	473	13			
1	C	319	Total	C	N	O	S	0	0	0
			2509	1593	428	475	13			

There are 18 discrepancies between the modelled and reference sequences:

Chain	Residue	Modelled	Actual	Comment	Reference
A	330	HIS	-	expression tag	UNP W8U075
A	331	HIS	-	expression tag	UNP W8U075
A	332	HIS	-	expression tag	UNP W8U075
A	333	HIS	-	expression tag	UNP W8U075
A	334	HIS	-	expression tag	UNP W8U075
A	335	HIS	-	expression tag	UNP W8U075
B	330	HIS	-	expression tag	UNP W8U075
B	331	HIS	-	expression tag	UNP W8U075
B	332	HIS	-	expression tag	UNP W8U075
B	333	HIS	-	expression tag	UNP W8U075
B	334	HIS	-	expression tag	UNP W8U075
B	335	HIS	-	expression tag	UNP W8U075
C	330	HIS	-	expression tag	UNP W8U075
C	331	HIS	-	expression tag	UNP W8U075
C	332	HIS	-	expression tag	UNP W8U075
C	333	HIS	-	expression tag	UNP W8U075
C	334	HIS	-	expression tag	UNP W8U075
C	335	HIS	-	expression tag	UNP W8U075

- Molecule 2 is (6 {R})-7-thia-2-azatricyclo[6.3.1.0^{4,12}]dodeca-1(11),3,8(12),9-tetraene-6-carboxylic acid (CCD ID: A1EHM) (formula: C₁₁H₉NO₂S) (labeled as "Ligand of Interest" by depositor).



Mol	Chain	Residues	Atoms					ZeroOcc	AltConf
2	A	1	Total	C	N	O	S	0	0
			15	11	1	2	1		
2	B	1	Total	C	N	O	S	0	0
			15	11	1	2	1		
2	C	1	Total	C	N	O	S	0	0
			15	11	1	2	1		

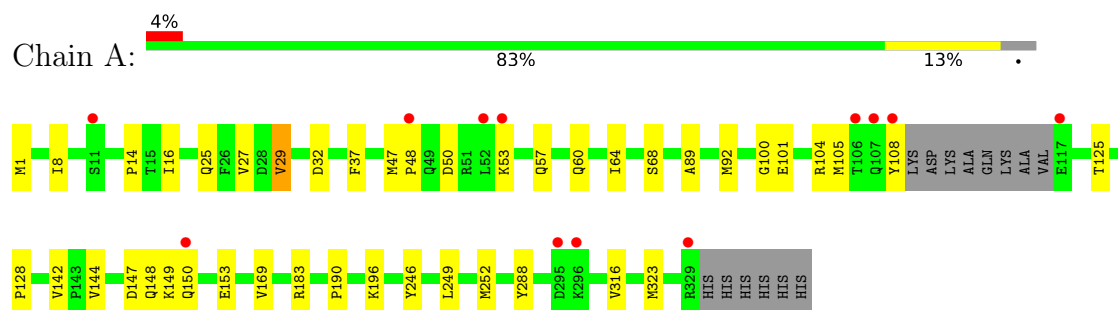
- Molecule 3 is water.

Mol	Chain	Residues	Atoms		ZeroOcc	AltConf
3	A	185	Total	O	0	0
			185	185		
3	B	109	Total	O	0	0
			109	109		
3	C	141	Total	O	0	0
			141	141		

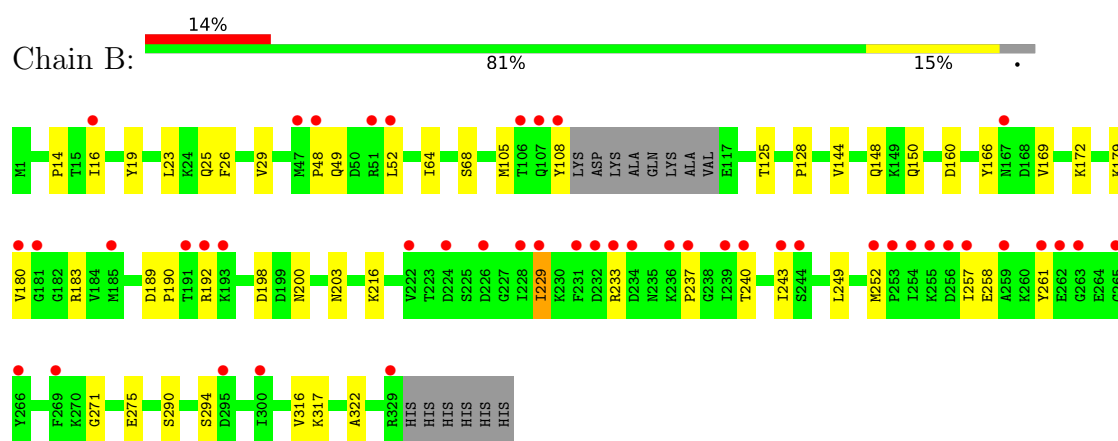
3 Residue-property plots [i](#)

These plots are drawn for all protein, RNA, DNA and oligosaccharide chains in the entry. The first graphic for a chain summarises the proportions of the various outlier classes displayed in the second graphic. The second graphic shows the sequence view annotated by issues in geometry and electron density. Residues are color-coded according to the number of geometric quality criteria for which they contain at least one outlier: green = 0, yellow = 1, orange = 2 and red = 3 or more. A red dot above a residue indicates a poor fit to the electron density ($RSRZ > 2$). Stretches of 2 or more consecutive residues without any outlier are shown as a green connector. Residues present in the sample, but not in the model, are shown in grey.

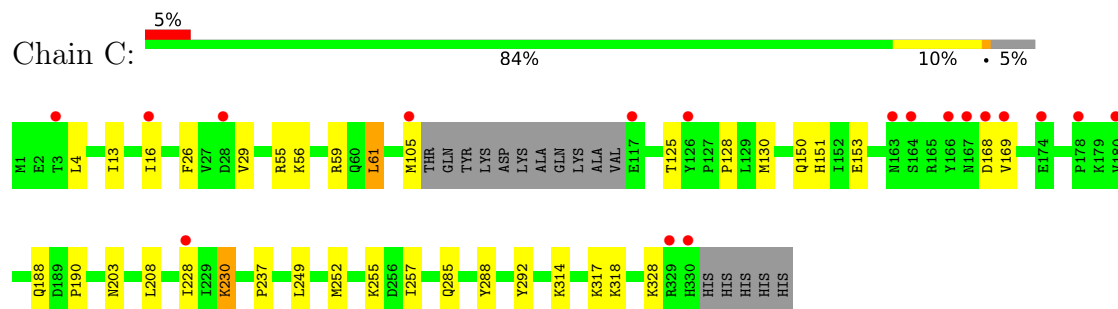
• Molecule 1: Tryptophan-tRNA ligase



• Molecule 1: Tryptophan-tRNA ligase



• Molecule 1: Tryptophan-tRNA ligase



4 Data and refinement statistics

Property	Value	Source
Space group	C 1 2 1	Depositor
Cell constants a, b, c, α , β , γ	183.94Å 66.22Å 99.31Å 90.00° 101.53° 90.00°	Depositor
Resolution (Å)	73.89 – 2.12 73.89 – 2.12	Depositor EDS
% Data completeness (in resolution range)	99.3 (73.89-2.12) 99.3 (73.89-2.12)	Depositor EDS
R_{merge}	0.09	Depositor
R_{sym}	(Not available)	Depositor
$\langle I/\sigma(I) \rangle$ ¹	1.89 (at 2.12Å)	Xtriage
Refinement program	PHENIX 1.21.2_5419	Depositor
R, R_{free}	0.201 , 0.247 0.201 , 0.246	Depositor DCC
R_{free} test set	3298 reflections (4.94%)	wwPDB-VP
Wilson B-factor (Å ²)	34.6	Xtriage
Anisotropy	0.655	Xtriage
Bulk solvent k_{sol} (e/Å ³), B_{sol} (Å ²)	0.36 , 40.6	EDS
L-test for twinning ²	$\langle L \rangle = 0.52$, $\langle L^2 \rangle = 0.35$	Xtriage
Estimated twinning fraction	No twinning to report.	Xtriage
F_o, F_c correlation	0.95	EDS
Total number of atoms	8012	wwPDB-VP
Average B, all atoms (Å ²)	44.0	wwPDB-VP

Xtriage's analysis on translational NCS is as follows: *The largest off-origin peak in the Patterson function is 4.70% of the height of the origin peak. No significant pseudotranslation is detected.*

¹Intensities estimated from amplitudes.

²Theoretical values of $\langle |L| \rangle$, $\langle L^2 \rangle$ for acentric reflections are 0.5, 0.333 respectively for untwinned datasets, and 0.375, 0.2 for perfectly twinned datasets.

5 Model quality

5.1 Standard geometry

Bond lengths and bond angles in the following residue types are not validated in this section: A1EHM

The Z score for a bond length (or angle) is the number of standard deviations the observed value is removed from the expected value. A bond length (or angle) with $|Z| > 5$ is considered an outlier worth inspection. RMSZ is the root-mean-square of all Z scores of the bond lengths (or angles).

Mol	Chain	Bond lengths		Bond angles	
		RMSZ	# Z >5	RMSZ	# Z >5
1	A	0.35	0/2571	0.54	0/3466
1	B	0.35	0/2539	0.53	0/3427
1	C	0.31	0/2553	0.51	0/3441
All	All	0.34	0/7663	0.52	0/10334

There are no bond length outliers.

There are no bond angle outliers.

There are no chirality outliers.

There are no planarity outliers.

5.2 Too-close contacts

In the following table, the Non-H and H(model) columns list the number of non-hydrogen atoms and hydrogen atoms in the chain respectively. The H(added) column lists the number of hydrogen atoms added and optimized by MolProbity. The Clashes column lists the number of clashes within the asymmetric unit, whereas Symm-Clashes lists symmetry-related clashes.

Mol	Chain	Non-H	H(model)	H(added)	Clashes	Symm-Clashes
1	A	2527	0	2559	28	0
1	B	2496	0	2504	36	0
1	C	2509	0	2542	26	0
2	A	15	0	0	0	0
2	B	15	0	0	0	0
2	C	15	0	0	0	0
3	A	185	0	0	3	0
3	B	109	0	0	8	0
3	C	141	0	0	2	0
All	All	8012	0	7605	85	0

The all-atom clashscore is defined as the number of clashes found per 1000 atoms (including hydrogen atoms). The all-atom clashscore for this structure is 6.

All (85) close contacts within the same asymmetric unit are listed below, sorted by their clash magnitude.

Atom-1	Atom-2	Interatomic distance (Å)	Clash overlap (Å)
1:B:229:ILE:HG12	1:B:261:TYR:HB2	1.67	0.76
1:B:229:ILE:HD13	1:B:258:GLU:HA	1.72	0.71
1:C:130:MET:HE1	1:C:151:HIS:CG	2.27	0.68
1:A:150:GLN:HG2	1:B:180:VAL:HG21	1.75	0.68
1:B:150:GLN:H	1:B:150:GLN:CD	2.02	0.67
1:C:190:PRO:HG3	3:C:505:HOH:O	1.94	0.67
1:C:168:ASP:C	3:C:501:HOH:O	2.40	0.64
1:B:48:PRO:HA	3:B:502:HOH:O	1.99	0.63
1:C:252:MET:HG2	1:C:257:ILE:HG13	1.82	0.62
1:B:19:TYR:HA	1:B:23:LEU:HB2	1.82	0.61
1:C:16:ILE:HD11	1:C:249:LEU:HD11	1.83	0.61
1:B:240:THR:HA	1:B:243:ILE:HD12	1.82	0.60
1:B:271:GLY:HA3	3:B:603:HOH:O	2.02	0.60
1:B:229:ILE:CD1	3:B:503:HOH:O	2.50	0.59
1:B:26:PHE:HA	1:B:29:VAL:HG22	1.84	0.59
1:B:252:MET:HE2	1:B:257:ILE:HG12	1.86	0.58
1:B:49:GLN:N	3:B:502:HOH:O	2.23	0.57
1:B:200:ASN:HB3	1:B:203:ASN:HD22	1.68	0.57
1:C:26:PHE:HA	1:C:29:VAL:HG22	1.87	0.57
1:C:130:MET:HE1	1:C:151:HIS:HB3	1.88	0.56
1:B:25:GLN:HG2	1:B:179:LYS:O	2.05	0.56
1:B:229:ILE:HD11	3:B:503:HOH:O	2.07	0.55
1:C:190:PRO:HB2	1:C:237:PRO:HB2	1.89	0.54
1:A:190:PRO:HG3	3:A:528:HOH:O	2.06	0.54
1:B:125:THR:O	1:B:128:PRO:HD2	2.09	0.53
1:B:144:VAL:HB	1:B:148:GLN:HG3	1.90	0.53
1:A:149:LYS:HB3	1:B:180:VAL:HG11	1.91	0.52
1:B:14:PRO:HD2	1:B:64:ILE:HD13	1.90	0.52
1:A:1:MET:HE2	1:A:32:ASP:C	2.35	0.51
1:B:229:ILE:HG13	3:B:503:HOH:O	2.09	0.51
1:A:196:LYS:HG2	3:A:620:HOH:O	2.10	0.51
1:A:150:GLN:HG2	1:B:180:VAL:CG2	2.42	0.50
1:B:190:PRO:HB2	1:B:237:PRO:HB2	1.95	0.48
1:C:150:GLN:HA	1:C:153:GLU:HB2	1.96	0.48
1:A:25:GLN:O	1:A:29:VAL:HG13	2.14	0.47
1:A:108:TYR:CG	1:A:150:GLN:HG3	2.50	0.47
1:B:290:SER:O	1:B:294:SER:HB3	2.14	0.47

Continued on next page...

Continued from previous page...

Atom-1	Atom-2	Interatomic distance (Å)	Clash overlap (Å)
1:C:130:MET:CE	1:C:151:HIS:HB3	2.44	0.47
1:A:125:THR:O	1:A:128:PRO:HD2	2.15	0.46
1:A:14:PRO:HD2	1:A:64:ILE:HD13	1.96	0.46
1:A:50:ASP:OD2	1:A:53:LYS:HB2	2.16	0.46
1:A:101:GLU:O	1:A:105:MET:HG2	2.15	0.46
1:A:147:ASP:OD1	1:A:148:GLN:HG2	2.16	0.46
1:B:105:MET:HE3	1:B:105:MET:HB3	1.78	0.46
1:C:130:MET:HE1	1:C:151:HIS:CB	2.45	0.46
1:C:13:ILE:HD13	1:C:208:LEU:HD12	1.98	0.45
1:C:255:LYS:HB2	1:C:255:LYS:HE2	1.71	0.45
1:C:317:LYS:HD3	1:C:317:LYS:HA	1.81	0.45
1:A:27:VAL:HG21	1:A:68:SER:O	2.16	0.45
1:B:275:GLU:OE1	3:B:501:HOH:O	2.21	0.45
1:A:142:VAL:HG12	1:A:144:VAL:HG13	1.99	0.45
1:A:100:GLY:O	1:A:104:ARG:HG3	2.17	0.44
1:A:183:ARG:HH21	1:B:108:TYR:HA	1.82	0.44
1:A:89:ALA:HA	1:A:92:MET:HE3	1.99	0.44
1:A:16:ILE:HD11	1:A:249:LEU:HD11	2.00	0.44
1:A:153:GLU:OE1	1:B:180:VAL:HG22	2.17	0.44
1:B:189:ASP:OD2	1:B:192:ARG:HD3	2.18	0.43
1:B:317:LYS:HD3	1:B:317:LYS:HA	1.82	0.43
1:C:169:VAL:HG21	1:C:318:LYS:HB3	1.99	0.43
1:B:16:ILE:HD11	1:B:249:LEU:HD11	2.00	0.43
1:A:47:MET:HB3	1:A:48:PRO:HD2	2.00	0.42
1:C:55:ARG:O	1:C:59:ARG:HG3	2.19	0.42
1:C:56:LYS:HE3	1:C:292:TYR:OH	2.19	0.42
1:A:150:GLN:HB2	3:A:538:HOH:O	2.18	0.42
1:C:125:THR:O	1:C:128:PRO:HD2	2.20	0.42
1:A:246:TYR:HE1	1:A:252:MET:HE3	1.85	0.42
1:A:105:MET:HE3	1:A:105:MET:HB3	1.89	0.42
1:B:160:ASP:OD1	1:B:172:LYS:HD2	2.20	0.42
1:B:166:TYR:HB3	1:B:322:ALA:HB1	2.00	0.42
1:C:314:LYS:O	1:C:318:LYS:HG3	2.19	0.41
1:C:188:GLN:HB2	1:C:203:ASN:OD1	2.20	0.41
1:B:52:LEU:HD23	1:B:52:LEU:HA	1.85	0.41
1:B:233:ARG:HD3	1:B:240:THR:HG21	2.02	0.41
1:C:105:MET:HE3	1:C:105:MET:HB3	1.82	0.41
1:A:323:MET:HE2	1:A:323:MET:HB3	1.97	0.41
1:C:228:ILE:HG22	1:C:230:LYS:HB3	2.03	0.41
1:B:198:ASP:HA	3:B:555:HOH:O	2.19	0.41
1:C:285:GLN:HA	1:C:288:TYR:HB3	2.02	0.41

Continued on next page...

Continued from previous page...

Atom-1	Atom-2	Interatomic distance (Å)	Clash overlap (Å)
1:C:228:ILE:HD13	1:C:228:ILE:HA	1.87	0.41
1:C:61:LEU:HA	1:C:61:LEU:HD13	1.89	0.41
1:A:53:LYS:HG2	1:A:57:GLN:NE2	2.36	0.41
1:A:60:GLN:HG2	1:A:288:TYR:OH	2.20	0.41
1:B:23:LEU:HD23	1:B:68:SER:OG	2.21	0.41
1:C:4:LEU:HD23	1:C:4:LEU:C	2.46	0.40
1:A:8:ILE:HD11	1:A:37:PHE:HB3	2.03	0.40

There are no symmetry-related clashes.

5.3 Torsion angles [i](#)

5.3.1 Protein backbone [i](#)

In the following table, the Percentiles column shows the percent Ramachandran outliers of the chain as a percentile score with respect to all X-ray entries followed by that with respect to entries of similar resolution.

The Analysed column shows the number of residues for which the backbone conformation was analysed, and the total number of residues.

Mol	Chain	Analysed	Favoured	Allowed	Outliers	Percentiles	
1	A	317/335 (95%)	308 (97%)	9 (3%)	0	100	100
1	B	317/335 (95%)	300 (95%)	17 (5%)	0	100	100
1	C	315/335 (94%)	305 (97%)	10 (3%)	0	100	100
All	All	949/1005 (94%)	913 (96%)	36 (4%)	0	100	100

There are no Ramachandran outliers to report.

5.3.2 Protein sidechains [i](#)

In the following table, the Percentiles column shows the percent sidechain outliers of the chain as a percentile score with respect to all X-ray entries followed by that with respect to entries of similar resolution.

The Analysed column shows the number of residues for which the sidechain conformation was analysed, and the total number of residues.

Mol	Chain	Analysed	Rotameric	Outliers	Percentiles	
1	A	276/289 (96%)	273 (99%)	3 (1%)	70	76
1	B	268/289 (93%)	263 (98%)	5 (2%)	52	58
1	C	274/289 (95%)	271 (99%)	3 (1%)	70	76
All	All	818/867 (94%)	807 (99%)	11 (1%)	65	72

All (11) residues with a non-rotameric sidechain are listed below:

Mol	Chain	Res	Type
1	A	29	VAL
1	A	169	VAL
1	A	316	VAL
1	B	169	VAL
1	B	183	ARG
1	B	216	LYS
1	B	229	ILE
1	B	316	VAL
1	C	61	LEU
1	C	230	LYS
1	C	328	LYS

Sometimes sidechains can be flipped to improve hydrogen bonding and reduce clashes. All (7) such sidechains are listed below:

Mol	Chain	Res	Type
1	A	57	GLN
1	A	150	GLN
1	B	9	GLN
1	B	138	ASN
1	B	203	ASN
1	B	303	GLN
1	C	43	HIS

5.3.3 RNA ⓘ

There are no RNA molecules in this entry.

5.4 Non-standard residues in protein, DNA, RNA chains ⓘ

There are no non-standard protein/DNA/RNA residues in this entry.

5.5 Carbohydrates

There are no oligosaccharides in this entry.

5.6 Ligand geometry

3 ligands are modelled in this entry.

In the following table, the Counts columns list the number of bonds (or angles) for which Mogul statistics could be retrieved, the number of bonds (or angles) that are observed in the model and the number of bonds (or angles) that are defined in the Chemical Component Dictionary. The Link column lists molecule types, if any, to which the group is linked. The Z score for a bond length (or angle) is the number of standard deviations the observed value is removed from the expected value. A bond length (or angle) with $|Z| > 2$ is considered an outlier worth inspection. RMSZ is the root-mean-square of all Z scores of the bond lengths (or angles).

Mol	Type	Chain	Res	Link	Bond lengths			Bond angles		
					Counts	RMSZ	$\# Z > 2$	Counts	RMSZ	$\# Z > 2$
2	A1EHM	C	401	-	15,17,17	0.86	0	14,25,25	0.99	0
2	A1EHM	B	401	-	15,17,17	0.87	0	14,25,25	1.04	0
2	A1EHM	A	401	-	15,17,17	0.86	0	14,25,25	1.04	0

In the following table, the Chirals column lists the number of chiral outliers, the number of chiral centers analysed, the number of these observed in the model and the number defined in the Chemical Component Dictionary. Similar counts are reported in the Torsion and Rings columns. '-' means no outliers of that kind were identified.

Mol	Type	Chain	Res	Link	Chirals	Torsions	Rings
2	A1EHM	C	401	-	-	0/3/12/12	0/2/3/3
2	A1EHM	B	401	-	-	0/3/12/12	0/2/3/3
2	A1EHM	A	401	-	-	0/3/12/12	0/2/3/3

There are no bond length outliers.

There are no bond angle outliers.

There are no chirality outliers.

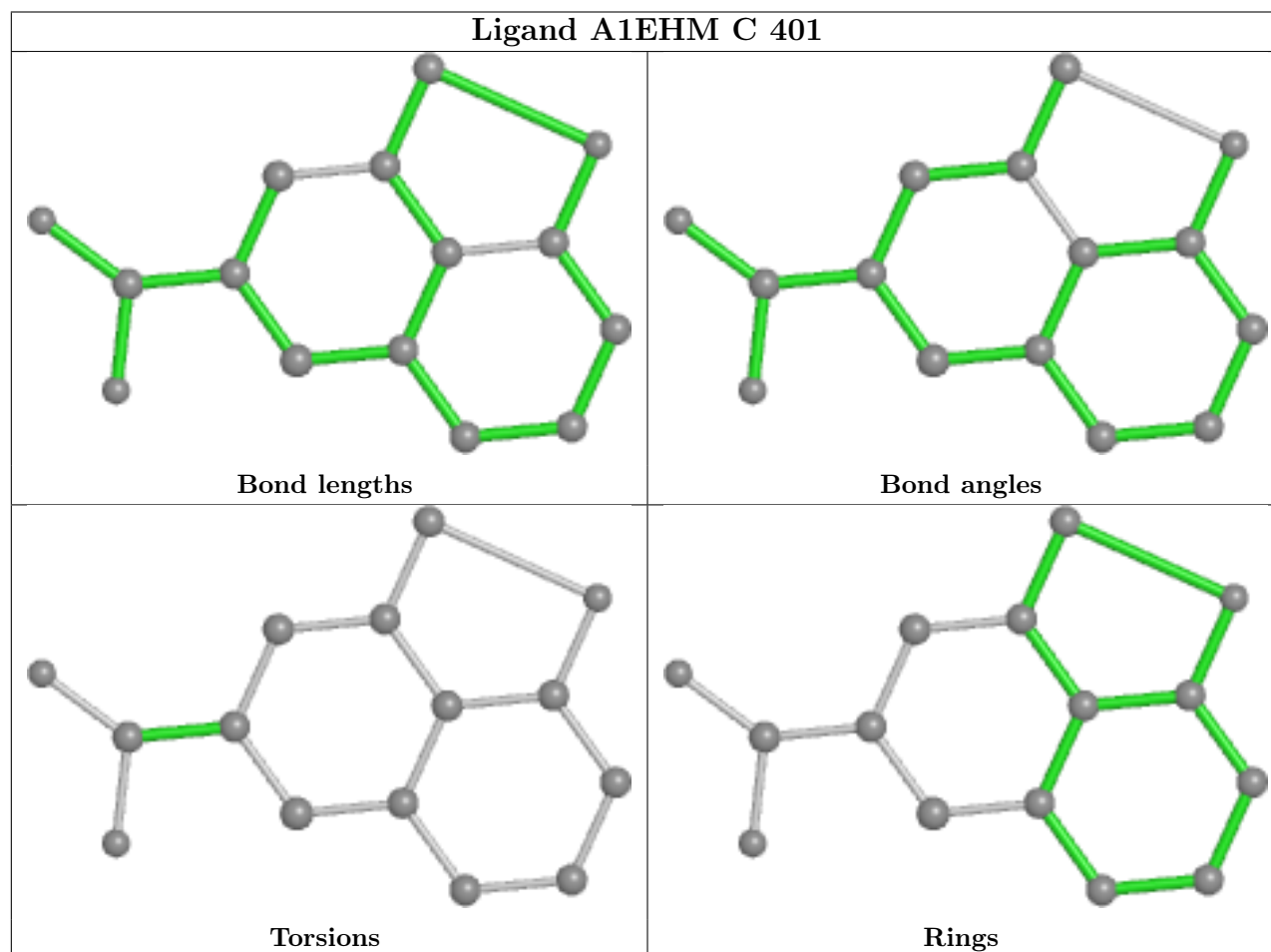
There are no torsion outliers.

There are no ring outliers.

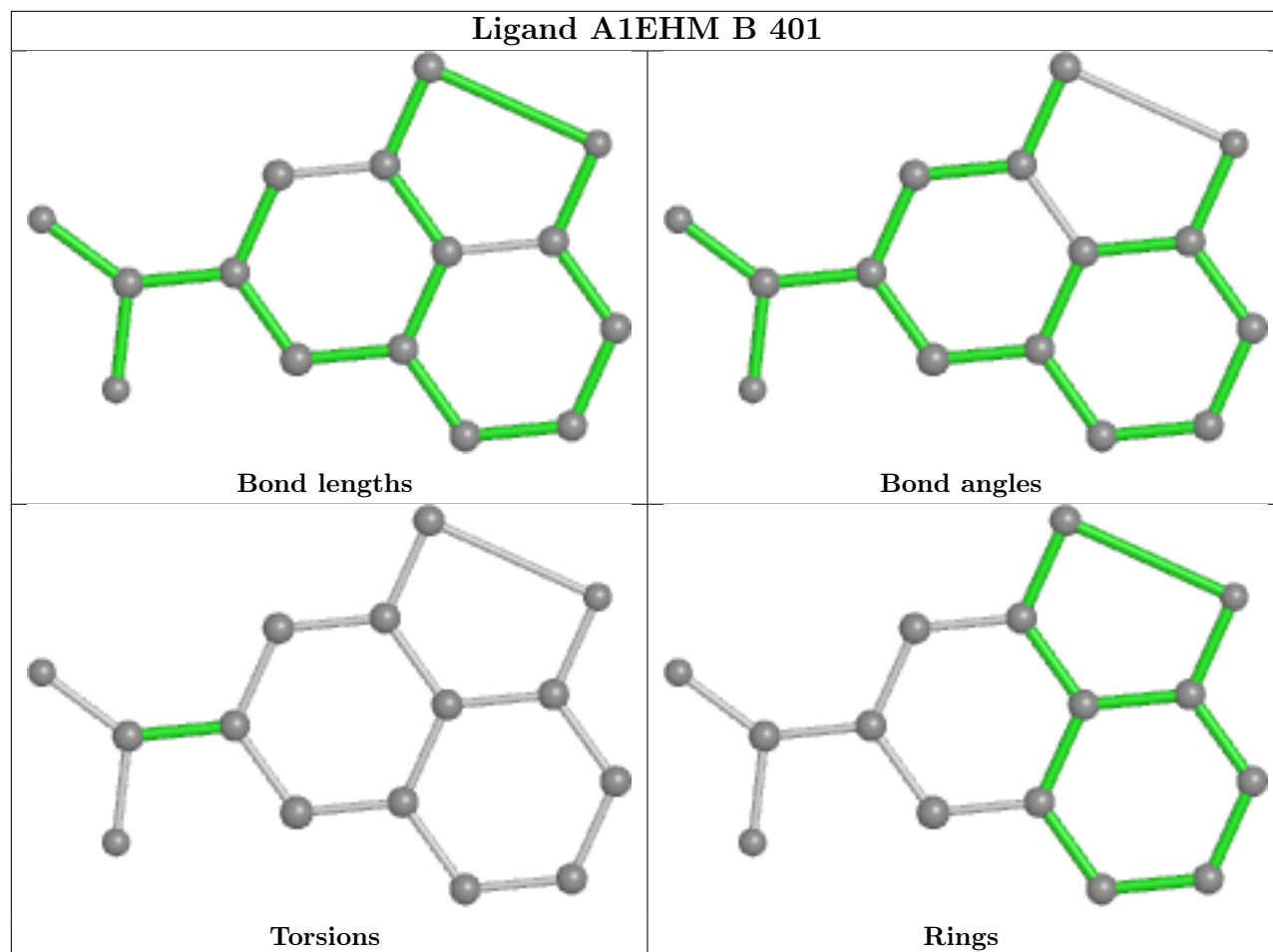
No monomer is involved in short contacts.

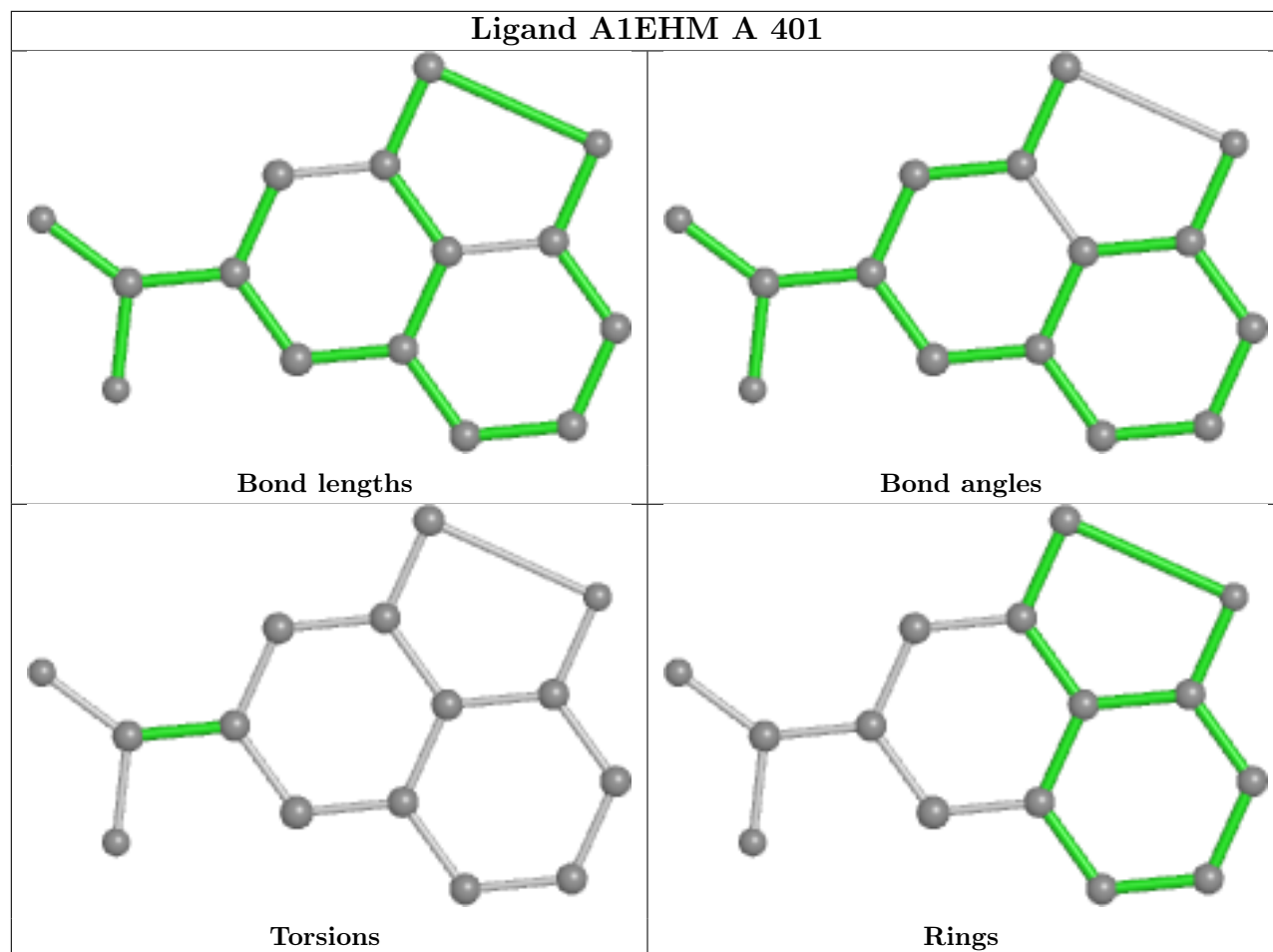
The following is a two-dimensional graphical depiction of Mogul quality analysis of bond lengths, bond angles, torsion angles, and ring geometry for all instances of the Ligand of Interest. In addition, ligands with molecular weight > 250 and outliers as shown on the validation Tables will also be included. For torsion angles, if less than 5% of the Mogul distribution of torsion angles is

within 10 degrees of the torsion angle in question, then that torsion angle is considered an outlier. Any bond that is central to one or more torsion angles identified as an outlier by Mogul will be highlighted in the graph. For rings, the root-mean-square deviation (RMSD) between the ring in question and similar rings identified by Mogul is calculated over all ring torsion angles. If the average RMSD is greater than 60 degrees and the minimal RMSD between the ring in question and any Mogul-identified rings is also greater than 60 degrees, then that ring is considered an outlier. The outliers are highlighted in purple. The color gray indicates Mogul did not find sufficient equivalents in the CSD to analyse the geometry.



Ligand A1EHM B 401





5.7 Other polymers [i](#)

There are no such residues in this entry.

5.8 Polymer linkage issues [i](#)

There are no chain breaks in this entry.

6 Fit of model and data

6.1 Protein, DNA and RNA chains

In the following table, the column labelled ‘#RSRZ > 2’ contains the number (and percentage) of RSRZ outliers, followed by percent RSRZ outliers for the chain as percentile scores relative to all X-ray entries and entries of similar resolution. The OWAB column contains the minimum, median, 95th percentile and maximum values of the occupancy-weighted average B-factor per residue. The column labelled ‘Q < 0.9’ lists the number of (and percentage) of residues with an average occupancy less than 0.9.

Mol	Chain	Analysed	<RSRZ>	#RSRZ>2	OWAB(Å ²)	Q<0.9
1	A	321/335 (95%)	0.19	12 (3%) 45 48	23, 37, 52, 77	0
1	B	321/335 (95%)	0.85	46 (14%) 7 8	25, 47, 76, 87	0
1	C	319/335 (95%)	0.61	18 (5%) 31 34	30, 43, 63, 85	0
All	All	961/1005 (95%)	0.55	76 (7%) 20 22	23, 42, 69, 87	0

All (76) RSRZ outliers are listed below:

Mol	Chain	Res	Type	RSRZ
1	B	224	ASP	4.9
1	C	330	HIS	4.8
1	B	229	ILE	4.8
1	B	231	PHE	4.7
1	B	108	TYR	4.7
1	B	228	ILE	4.6
1	B	254	ILE	4.4
1	A	48	PRO	4.4
1	C	164	SER	4.2
1	B	257	ILE	4.1
1	C	180	VAL	4.1
1	A	108	TYR	3.7
1	B	295	ASP	3.6
1	B	329	ARG	3.6
1	B	253	PRO	3.6
1	B	48	PRO	3.5
1	B	234	ASP	3.5
1	B	239	ILE	3.3
1	B	47	MET	3.3
1	B	237	PRO	3.3
1	B	263	GLY	3.3
1	B	236	LYS	3.3
1	B	255	LYS	3.2

Continued on next page...

Continued from previous page...

Mol	Chain	Res	Type	RSRZ
1	B	262	GLU	3.1
1	B	244	SER	3.1
1	B	259	ALA	3.1
1	A	107	GLN	3.0
1	B	269	PHE	3.0
1	A	117	GLU	3.0
1	A	11	SER	2.9
1	B	265	GLY	2.9
1	B	51	ARG	2.9
1	B	52	LEU	2.8
1	C	168	ASP	2.8
1	B	261	TYR	2.8
1	A	329	ARG	2.7
1	B	240	THR	2.7
1	B	232	ASP	2.7
1	B	191	THR	2.7
1	C	178	PRO	2.6
1	C	228	ILE	2.6
1	B	193	LYS	2.5
1	A	295	ASP	2.5
1	A	150	GLN	2.5
1	B	243	ILE	2.5
1	C	16	ILE	2.5
1	B	233	ARG	2.5
1	B	266	TYR	2.5
1	B	180	VAL	2.5
1	B	256	ASP	2.4
1	B	222	VAL	2.4
1	C	169	VAL	2.4
1	B	181	GLY	2.4
1	B	252	MET	2.4
1	B	16	ILE	2.4
1	C	28	ASP	2.4
1	A	53	LYS	2.3
1	A	296	LYS	2.3
1	B	192	ARG	2.3
1	B	107	GLN	2.3
1	C	3	THR	2.3
1	C	163	ASN	2.3
1	B	106	THR	2.2
1	C	167	ASN	2.2
1	C	174	GLU	2.2

Continued on next page...

Continued from previous page...

Mol	Chain	Res	Type	RSRZ
1	A	52	LEU	2.2
1	C	126	TYR	2.1
1	B	167	ASN	2.1
1	A	106	THR	2.1
1	C	329	ARG	2.1
1	B	185	MET	2.1
1	C	166	TYR	2.1
1	B	300	ILE	2.1
1	C	117	GLU	2.0
1	B	226	ASP	2.0
1	C	105	MET	2.0

6.2 Non-standard residues in protein, DNA, RNA chains [i](#)

There are no non-standard protein/DNA/RNA residues in this entry.

6.3 Carbohydrates [i](#)

There are no oligosaccharides in this entry.

6.4 Ligands [i](#)

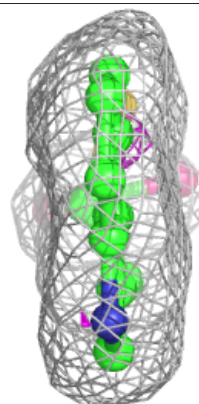
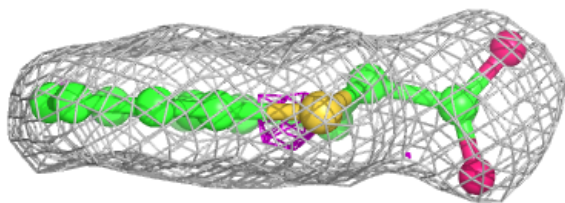
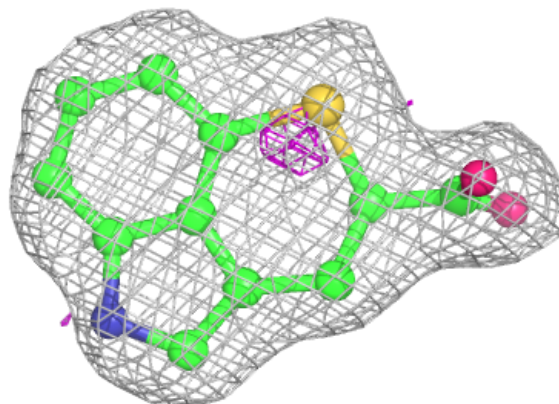
In the following table, the Atoms column lists the number of modelled atoms in the group and the number defined in the chemical component dictionary. The B-factors column lists the minimum, median, 95th percentile and maximum values of B factors of atoms in the group. The column labelled 'Q< 0.9' lists the number of atoms with occupancy less than 0.9.

Mol	Type	Chain	Res	Atoms	RSCC	RSR	B-factors(Å ²)	Q<0.9
2	A1EHM	B	401	15/15	0.91	0.10	35,39,57,59	0
2	A1EHM	A	401	15/15	0.93	0.09	28,34,51,57	0
2	A1EHM	C	401	15/15	0.94	0.09	45,47,61,69	0

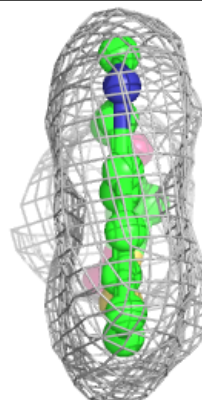
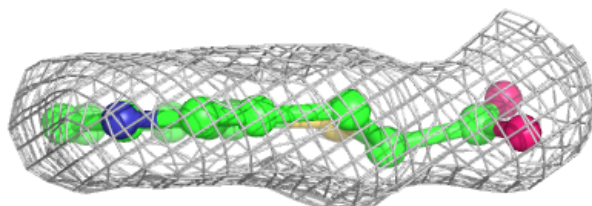
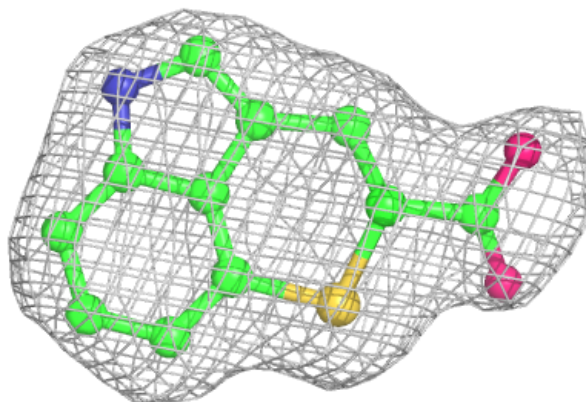
The following is a graphical depiction of the model fit to experimental electron density of all instances of the Ligand of Interest. In addition, ligands with molecular weight > 250 and outliers as shown on the geometry validation Tables will also be included. Each fit is shown from different orientation to approximate a three-dimensional view.

Electron density around A1EHM B 401:

$2mF_o-DF_c$ (at 0.7 rmsd) in gray
 mF_o-DF_c (at 3 rmsd) in purple (negative)
and green (positive)

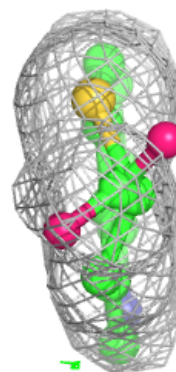
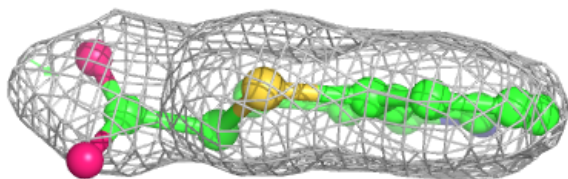
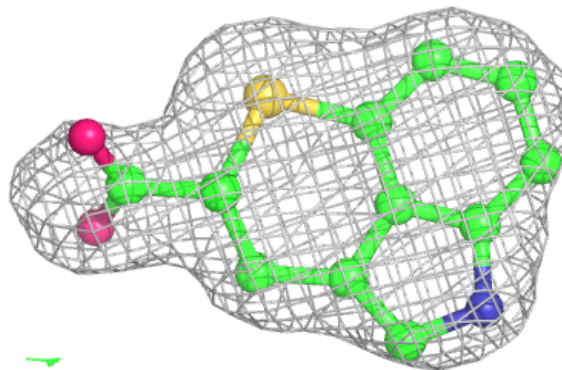
**Electron density around A1EHM A 401:**

$2mF_o-DF_c$ (at 0.7 rmsd) in gray
 mF_o-DF_c (at 3 rmsd) in purple (negative)
and green (positive)



Electron density around A1EHM C 401:

$2mF_o-DF_c$ (at 0.7 rmsd) in gray
 mF_o-DF_c (at 3 rmsd) in purple (negative)
and green (positive)



6.5 Other polymers [i](#)

There are no such residues in this entry.