



Full wwPDB EM Validation Report ⓘ

Dec 1, 2025 – 10:33 PM JST

PDB ID : 9KWE / pdb_00009kwe
EMDB ID : EMD-62608
Title : Cryo-EM structure of the ICT01-BTN3A1/BTN3A2 complex
Authors : Xin, W.Z.; Huang, B.D.; Zhou, Q.
Deposited on : 2024-12-05
Resolution : 3.70 Å(reported)

This is a Full wwPDB EM Validation Report for a publicly released PDB entry.

We welcome your comments at validation@mail.wwpdb.org

A user guide is available at

<https://www.wwpdb.org/validation/2017/EMValidationReportHelp>

with specific help available everywhere you see the ⓘ symbol.

The types of validation reports are described at

<http://www.wwpdb.org/validation/2017/FAQs#types>.

The following versions of software and data (see [references ⓘ](#)) were used in the production of this report:

EMDB validation analysis : 0.0.1.dev129
MolProbity : 4-5-2 with Phenix2.0
Percentile statistics : 20231227.v01 (using entries in the PDB archive December 27th 2023)
EM percentile statistics : 202505.v01 (Using data in the EMDb archive up until May 2025)
MapQ : 1.9.13
Ideal geometry (proteins) : Engh & Huber (2001)
Ideal geometry (DNA, RNA) : Parkinson et al. (1996)
Validation Pipeline (wwPDB-VP) : 2.46

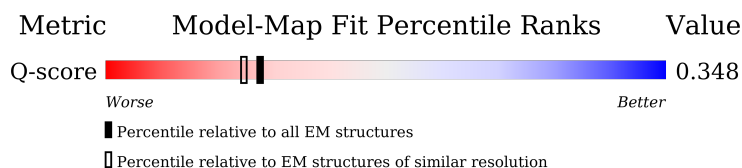
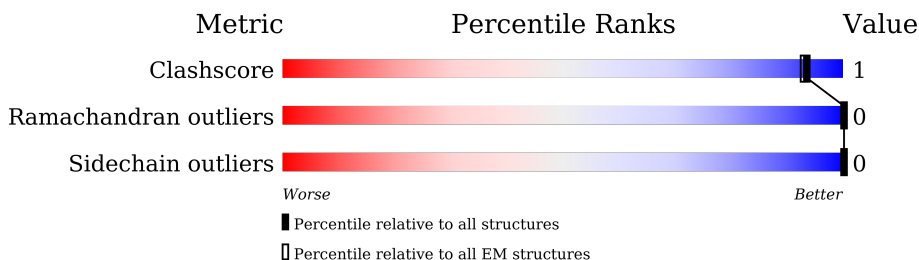
1 Overall quality at a glance

The following experimental techniques were used to determine the structure:

ELECTRON MICROSCOPY

The reported resolution of this entry is 3.70 Å.

Percentile scores (ranging between 0-100) for global validation metrics of the entry are shown in the following graphic. The table shows the number of entries on which the scores are based.



Metric	Whole archive (#Entries)	EM structures (#Entries)	Similar EM resolution (#Entries, resolution range(Å))
Clashscore	210492	15764	-
Ramachandran outliers	207382	16835	-
Sidechain outliers	206894	16415	-
Q-score	-	25397	11569 (3.20 - 4.20)

The table below summarises the geometric issues observed across the polymeric chains and their fit to the map. The red, orange, yellow and green segments of the bar indicate the fraction of residues that contain outliers for ≥ 3 , 2, 1 and 0 types of geometric quality criteria respectively. A grey segment represents the fraction of residues that are not modelled. The numeric value for each fraction is indicated below the corresponding segment, with a dot representing fractions $\leq 5\%$. The upper red bar (where present) indicates the fraction of residues that have poor fit to the EM map (all-atom inclusion $< 40\%$). The numeric value is given above the bar.

Mol	Chain	Length	Quality of chain
1	E	340	
2	F	539	
3	H	254	
4	L	236	

2 Entry composition

There are 4 unique types of molecules in this entry. The entry contains 6557 atoms, of which 0 are hydrogens and 0 are deuteriums.

In the tables below, the AltConf column contains the number of residues with at least one atom in alternate conformation and the Trace column contains the number of residues modelled with at most 2 atoms.

- Molecule 1 is a protein called Butyrophilin subfamily 3 member A2.

Mol	Chain	Residues	Atoms					AltConf	Trace
1	E	212	Total	C	N	O	S	0	0
			1597	1006	272	311	8		

There are 35 discrepancies between the modelled and reference sequences:

Chain	Residue	Modelled	Actual	Comment	Reference
E	8	MET	-	initiating methionine	UNP P78410
E	9	ASP	-	expression tag	UNP P78410
E	10	MET	-	expression tag	UNP P78410
E	11	ARG	-	expression tag	UNP P78410
E	12	VAL	-	expression tag	UNP P78410
E	13	PRO	-	expression tag	UNP P78410
E	14	ALA	-	expression tag	UNP P78410
E	15	GLN	-	expression tag	UNP P78410
E	16	LEU	-	expression tag	UNP P78410
E	17	LEU	-	expression tag	UNP P78410
E	18	GLY	-	expression tag	UNP P78410
E	19	LEU	-	expression tag	UNP P78410
E	20	LEU	-	expression tag	UNP P78410
E	21	LEU	-	expression tag	UNP P78410
E	22	LEU	-	expression tag	UNP P78410
E	23	TRP	-	expression tag	UNP P78410
E	24	LEU	-	expression tag	UNP P78410
E	25	SER	-	expression tag	UNP P78410
E	26	GLY	-	expression tag	UNP P78410
E	27	ALA	-	expression tag	UNP P78410
E	28	ARG	-	expression tag	UNP P78410
E	29	CYS	-	expression tag	UNP P78410
E	335	GLY	-	expression tag	UNP P78410
E	336	SER	-	expression tag	UNP P78410
E	337	SER	-	expression tag	UNP P78410
E	338	GLY	-	expression tag	UNP P78410
E	339	MET	-	expression tag	UNP P78410
E	340	ASP	-	expression tag	UNP P78410

Continued on next page...

Continued from previous page...

Chain	Residue	Modelled	Actual	Comment	Reference
E	341	TYR	-	expression tag	UNP P78410
E	342	LYS	-	expression tag	UNP P78410
E	343	ASP	-	expression tag	UNP P78410
E	344	ASP	-	expression tag	UNP P78410
E	345	ASP	-	expression tag	UNP P78410
E	346	ASP	-	expression tag	UNP P78410
E	347	LYS	-	expression tag	UNP P78410

- Molecule 2 is a protein called Butyrophilin subfamily 3 member A1.

Mol	Chain	Residues	Atoms					AltConf	Trace
2	F	212	Total	C	N	O	S	0	0
			1596	1004	272	312	8		

There are 55 discrepancies between the modelled and reference sequences:

Chain	Residue	Modelled	Actual	Comment	Reference
F	8	MET	-	initiating methionine	UNP O00481
F	9	ASP	-	expression tag	UNP O00481
F	10	MET	-	expression tag	UNP O00481
F	11	ARG	-	expression tag	UNP O00481
F	12	VAL	-	expression tag	UNP O00481
F	13	PRO	-	expression tag	UNP O00481
F	14	ALA	-	expression tag	UNP O00481
F	15	GLN	-	expression tag	UNP O00481
F	16	LEU	-	expression tag	UNP O00481
F	17	LEU	-	expression tag	UNP O00481
F	18	GLY	-	expression tag	UNP O00481
F	19	LEU	-	expression tag	UNP O00481
F	20	LEU	-	expression tag	UNP O00481
F	21	LEU	-	expression tag	UNP O00481
F	22	LEU	-	expression tag	UNP O00481
F	23	TRP	-	expression tag	UNP O00481
F	24	LEU	-	expression tag	UNP O00481
F	25	SER	-	expression tag	UNP O00481
F	26	GLY	-	expression tag	UNP O00481
F	27	ALA	-	expression tag	UNP O00481
F	28	ARG	-	expression tag	UNP O00481
F	29	CYS	-	expression tag	UNP O00481
F	514	GLY	-	expression tag	UNP O00481
F	515	SER	-	expression tag	UNP O00481
F	516	SER	-	expression tag	UNP O00481

Continued on next page...

Continued from previous page...

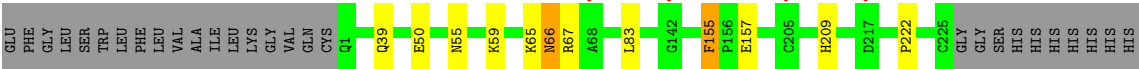
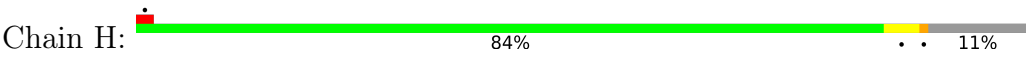
Chain	Residue	Modelled	Actual	Comment	Reference
F	517	GLY	-	expression tag	UNP O00481
F	518	ALA	-	expression tag	UNP O00481
F	519	TRP	-	expression tag	UNP O00481
F	520	SER	-	expression tag	UNP O00481
F	521	HIS	-	expression tag	UNP O00481
F	522	PRO	-	expression tag	UNP O00481
F	523	GLN	-	expression tag	UNP O00481
F	524	PHE	-	expression tag	UNP O00481
F	525	GLU	-	expression tag	UNP O00481
F	526	LYS	-	expression tag	UNP O00481
F	527	GLY	-	expression tag	UNP O00481
F	528	GLY	-	expression tag	UNP O00481
F	529	GLY	-	expression tag	UNP O00481
F	530	SER	-	expression tag	UNP O00481
F	531	GLY	-	expression tag	UNP O00481
F	532	GLY	-	expression tag	UNP O00481
F	533	GLY	-	expression tag	UNP O00481
F	534	SER	-	expression tag	UNP O00481
F	535	GLY	-	expression tag	UNP O00481
F	536	GLY	-	expression tag	UNP O00481
F	537	SER	-	expression tag	UNP O00481
F	538	ALA	-	expression tag	UNP O00481
F	539	TRP	-	expression tag	UNP O00481
F	540	SER	-	expression tag	UNP O00481
F	541	HIS	-	expression tag	UNP O00481
F	542	PRO	-	expression tag	UNP O00481
F	543	GLN	-	expression tag	UNP O00481
F	544	PHE	-	expression tag	UNP O00481
F	545	GLU	-	expression tag	UNP O00481
F	546	LYS	-	expression tag	UNP O00481

- Molecule 3 is a protein called ICT01 heavy chain.

Mol	Chain	Residues	Atoms					AltConf	Trace
3	H	225	Total	C	N	O	S	0	0
			1710	1080	285	337	8		

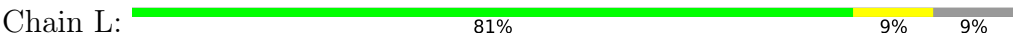
- Molecule 4 is a protein called ICT01 light chain.

Mol	Chain	Residues	Atoms					AltConf	Trace
4	L	214	Total	C	N	O	S	0	0
			1654	1037	278	333	6		



HIS

- Molecule 4: ICT01 light chain



F209
E213
C214

4 Experimental information

Property	Value	Source
EM reconstruction method	SINGLE PARTICLE	Depositor
Imposed symmetry	POINT, Not provided	
Number of particles used	311879	Depositor
Resolution determination method	FSC 0.143 CUT-OFF	Depositor
CTF correction method	PHASE FLIPPING AND AMPLITUDE CORRECTION	Depositor
Microscope	TFS KRIOS	Depositor
Voltage (kV)	300	Depositor
Electron dose ($e^-/\text{\AA}^2$)	50	Depositor
Minimum defocus (nm)	1200	Depositor
Maximum defocus (nm)	2000	Depositor
Magnification	Not provided	
Image detector	GATAN K3 (6k x 4k)	Depositor
Maximum map value	0.201	Depositor
Minimum map value	-0.123	Depositor
Average map value	-0.000	Depositor
Map value standard deviation	0.004	Depositor
Recommended contour level	0.005	Depositor
Map size (\AA)	347.84, 347.84, 347.84	wwPDB
Map dimensions	320, 320, 320	wwPDB
Map angles ($^\circ$)	90.0, 90.0, 90.0	wwPDB
Pixel spacing (\AA)	1.087, 1.087, 1.087	Depositor

5 Model quality

5.1 Standard geometry

The Z score for a bond length (or angle) is the number of standard deviations the observed value is removed from the expected value. A bond length (or angle) with $|Z| > 5$ is considered an outlier worth inspection. RMSZ is the root-mean-square of all Z scores of the bond lengths (or angles).

Mol	Chain	Bond lengths		Bond angles	
		RMSZ	# Z >5	RMSZ	# Z >5
1	E	1.76	5/1629 (0.3%)	1.46	9/2210 (0.4%)
2	F	1.80	6/1628 (0.4%)	1.44	10/2209 (0.5%)
3	H	1.76	1/1751 (0.1%)	1.41	8/2380 (0.3%)
4	L	1.68	4/1692 (0.2%)	1.47	9/2299 (0.4%)
All	All	1.75	16/6700 (0.2%)	1.45	36/9098 (0.4%)

Chiral center outliers are detected by calculating the chiral volume of a chiral center and verifying if the center is modelled as a planar moiety or with the opposite hand. A planarity outlier is detected by checking planarity of atoms in a peptide group, atoms in a mainchain group or atoms of a sidechain that are expected to be planar.

Mol	Chain	#Chirality outliers	#Planarity outliers
2	F	0	1
3	H	0	2
4	L	0	3
All	All	0	6

All (16) bond length outliers are listed below:

Mol	Chain	Res	Type	Atoms	Z	Observed(Å)	Ideal(Å)
1	E	163	HIS	CD2-NE2	6.77	1.45	1.37
3	H	209	HIS	CD2-NE2	5.86	1.44	1.37
4	L	189	HIS	CD2-NE2	5.62	1.44	1.37
2	F	112	ARG	CA-C	5.55	1.59	1.52
2	F	163	HIS	CE1-NE2	-5.40	1.27	1.32
1	E	50	LEU	C-O	-5.35	1.19	1.24
2	F	151	HIS	CD2-NE2	5.33	1.43	1.37
2	F	114	HIS	CD2-NE2	5.23	1.43	1.37
1	E	146	LEU	CA-C	5.22	1.58	1.52
4	L	7	SER	CA-C	5.21	1.59	1.52
4	L	55	HIS	CD2-NE2	5.18	1.43	1.37
2	F	114	HIS	ND1-CE1	5.13	1.37	1.32
1	E	187	ILE	CA-C	5.12	1.58	1.53

Continued on next page...

Continued from previous page...

Mol	Chain	Res	Type	Atoms	Z	Observed(Å)	Ideal(Å)
2	F	78	VAL	CA-C	5.10	1.59	1.52
4	L	72	THR	CA-C	5.07	1.59	1.52
1	E	162	ILE	CA-C	5.04	1.58	1.52

All (36) bond angle outliers are listed below:

Mol	Chain	Res	Type	Atoms	Z	Observed(°)	Ideal(°)
3	H	209	HIS	CE1-NE2-CD2	-7.97	101.03	109.00
4	L	198	HIS	CE1-NE2-CD2	-6.72	102.28	109.00
3	H	222	PRO	CA-C-O	-6.71	116.34	121.31
4	L	187	GLU	N-CA-C	-6.32	105.06	112.89
1	E	186	ASN	OD1-CG-ND2	-6.04	116.56	122.60
4	L	4	MET	CA-C-O	-6.01	115.34	122.13
4	L	1	ASP	CA-CB-CG	5.97	118.57	112.60
2	F	154	VAL	N-CA-C	5.92	116.64	107.99
4	L	186	TYR	N-CA-C	-5.90	104.79	112.23
1	E	53	HIS	CB-CG-CD2	-5.89	123.54	131.20
3	H	155	PHE	CA-C-O	-5.87	115.10	120.50
1	E	151	HIS	CE1-NE2-CD2	-5.81	103.19	109.00
2	F	60	ALA	CA-C-O	-5.78	115.19	121.20
1	E	125	LEU	CA-C-O	-5.71	114.76	121.44
1	E	185	GLU	CA-C-O	-5.64	114.84	121.16
4	L	119	PRO	N-CA-C	5.64	117.58	110.70
2	F	102	ASP	CA-CB-CG	5.58	118.18	112.60
2	F	76	VAL	CA-C-O	-5.53	115.86	121.67
3	H	65	LYS	N-CA-C	-5.51	105.19	111.14
2	F	227	LEU	N-CA-C	-5.51	106.69	113.41
2	F	96	ARG	N-CA-C	-5.49	105.89	112.59
2	F	199	VAL	N-CA-C	-5.48	105.00	113.16
3	H	55	ASN	N-CA-C	-5.45	107.28	114.31
4	L	117	ILE	N-CA-C	5.38	116.22	108.48
1	E	158	GLU	N-CA-C	-5.33	107.32	113.88
1	E	114	HIS	CB-CG-CD2	-5.31	124.30	131.20
1	E	222	ILE	N-CA-C	5.17	115.30	107.80
1	E	199	VAL	N-CA-C	-5.15	105.82	113.39
2	F	53	HIS	ND1-CE1-NE2	5.12	113.52	108.40
4	L	209	PHE	N-CA-C	5.08	116.13	108.46
3	H	39	GLN	N-CA-C	5.06	116.84	108.13
2	F	149	ASP	CA-CB-CG	5.06	117.66	112.60
4	L	62	PHE	CA-CB-CG	-5.05	108.75	113.80
2	F	53	HIS	CE1-NE2-CD2	-5.04	103.96	109.00
3	H	66	ASN	CA-CB-CG	5.03	117.63	112.60

Continued on next page...

Continued from previous page...

Mol	Chain	Res	Type	Atoms	Z	Observed(°)	Ideal(°)
3	H	83	LEU	CA-C-O	-5.00	116.11	121.56

There are no chirality outliers.

All (6) planarity outliers are listed below:

Mol	Chain	Res	Type	Group
2	F	172	TYR	Peptide
3	H	155	PHE	Peptide
3	H	157	GLU	Peptide
4	L	161	GLU	Peptide
4	L	7	SER	Peptide
4	L	94	TYR	Peptide

5.2 Too-close contacts ⓘ

In the following table, the Non-H and H(model) columns list the number of non-hydrogen atoms and hydrogen atoms in the chain respectively. The H(added) column lists the number of hydrogen atoms added and optimized by MolProbity. The Clashes column lists the number of clashes within the asymmetric unit, whereas Symm-Clashes lists symmetry-related clashes.

Mol	Chain	Non-H	H(model)	H(added)	Clashes	Symm-Clashes
1	E	1597	0	1567	3	0
2	F	1596	0	1571	1	0
3	H	1710	0	1680	4	0
4	L	1654	0	1602	7	0
All	All	6557	0	6420	15	0

The all-atom clashscore is defined as the number of clashes found per 1000 atoms (including hydrogen atoms). The all-atom clashscore for this structure is 1.

All (15) close contacts within the same asymmetric unit are listed below, sorted by their clash magnitude.

Atom-1	Atom-2	Interatomic distance (Å)	Clash overlap (Å)
3:H:50:GLU:OE2	3:H:59:LYS:HG3	1.93	0.69
4:L:85:THR:HG22	4:L:87:TYR:CE1	2.34	0.62
4:L:85:THR:HG21	4:L:87:TYR:OH	2.05	0.57
1:E:126:CYS:O	1:E:136:LYS:HA	2.10	0.52
4:L:86:TYR:O	4:L:101:GLY:HA2	2.13	0.49
1:E:100:LEU:HD11	1:E:112:ARG:HE	1.81	0.46

Continued on next page...

Continued from previous page...

Atom-1	Atom-2	Interatomic distance (Å)	Clash overlap (Å)
1:E:96:ARG:HH11	1:E:96:ARG:HG2	1.82	0.45
3:H:50:GLU:HG2	3:H:59:LYS:CG	2.47	0.44
3:H:66:ASN:C	3:H:67:ARG:HG3	2.41	0.44
4:L:85:THR:CG2	4:L:87:TYR:CE1	3.00	0.44
3:H:50:GLU:HG2	3:H:59:LYS:HB2	2.01	0.43
4:L:85:THR:CG2	4:L:87:TYR:CZ	3.03	0.42
4:L:35:TRP:CH2	4:L:88:CYS:HB3	2.56	0.41
4:L:213:GLU:O	4:L:214:CYS:C	2.64	0.41
2:F:181:ASN:OD1	2:F:182:ASN:N	2.54	0.41

There are no symmetry-related clashes.

5.3 Torsion angles [i](#)

5.3.1 Protein backbone [i](#)

In the following table, the Percentiles column shows the percent Ramachandran outliers of the chain as a percentile score with respect to all PDB entries followed by that with respect to all EM entries.

The Analysed column shows the number of residues for which the backbone conformation was analysed, and the total number of residues.

Mol	Chain	Analysed	Favoured	Allowed	Outliers	Percentiles	
1	E	210/340 (62%)	210 (100%)	0	0	100	100
2	F	210/539 (39%)	210 (100%)	0	0	100	100
3	H	223/254 (88%)	220 (99%)	3 (1%)	0	100	100
4	L	212/236 (90%)	212 (100%)	0	0	100	100
All	All	855/1369 (62%)	852 (100%)	3 (0%)	0	100	100

There are no Ramachandran outliers to report.

5.3.2 Protein sidechains [i](#)

In the following table, the Percentiles column shows the percent sidechain outliers of the chain as a percentile score with respect to all PDB entries followed by that with respect to all EM entries.

The Analysed column shows the number of residues for which the sidechain conformation was analysed, and the total number of residues.

Mol	Chain	Analysed	Rotameric	Outliers	Percentiles	
1	E	170/278 (61%)	170 (100%)	0	100	100
2	F	172/451 (38%)	172 (100%)	0	100	100
3	H	193/217 (89%)	193 (100%)	0	100	100
4	L	189/207 (91%)	189 (100%)	0	100	100
All	All	724/1153 (63%)	724 (100%)	0	100	100

There are no protein residues with a non-rotameric sidechain to report.

Sometimes sidechains can be flipped to improve hydrogen bonding and reduce clashes. All (4) such sidechains are listed below:

Mol	Chain	Res	Type
1	E	163	HIS
3	H	39	GLN
4	L	79	GLN
4	L	155	GLN

5.3.3 RNA [i](#)

There are no RNA molecules in this entry.

5.4 Non-standard residues in protein, DNA, RNA chains [i](#)

There are no non-standard protein/DNA/RNA residues in this entry.

5.5 Carbohydrates [i](#)

There are no oligosaccharides in this entry.

5.6 Ligand geometry [i](#)

There are no ligands in this entry.

5.7 Other polymers [i](#)

There are no such residues in this entry.

5.8 Polymer linkage issues ⓘ

There are no chain breaks in this entry.

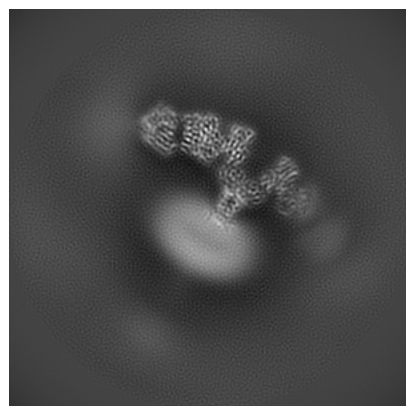
6 Map visualisation [i](#)

This section contains visualisations of the EMDB entry EMD-62608. These allow visual inspection of the internal detail of the map and identification of artifacts.

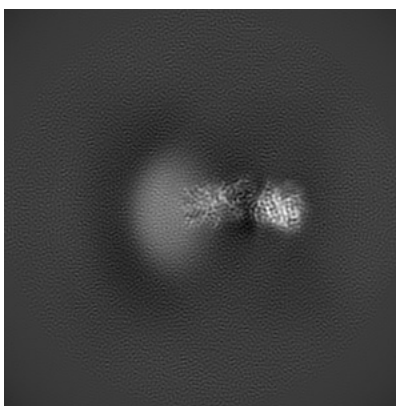
Images derived from a raw map, generated by summing the deposited half-maps, are presented below the corresponding image components of the primary map to allow further visual inspection and comparison with those of the primary map.

6.1 Orthogonal projections [i](#)

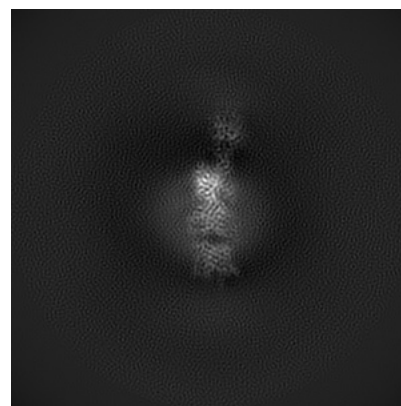
6.1.1 Primary map



X

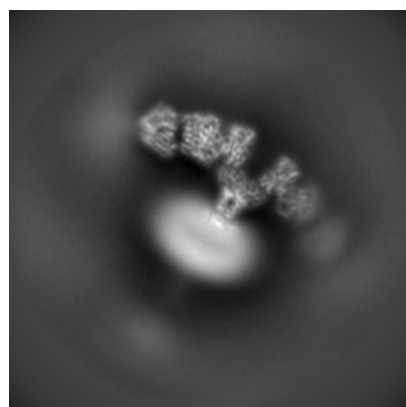


Y

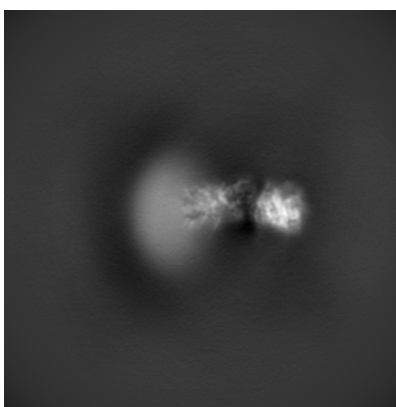


Z

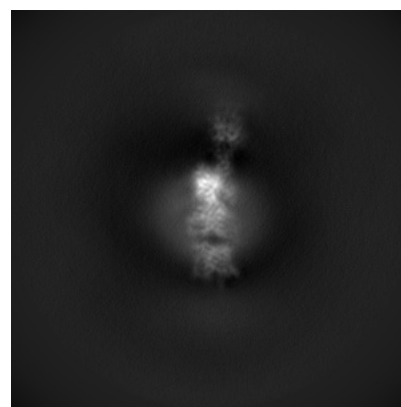
6.1.2 Raw map



X



Y

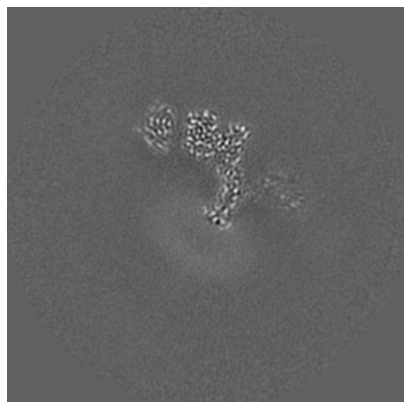


Z

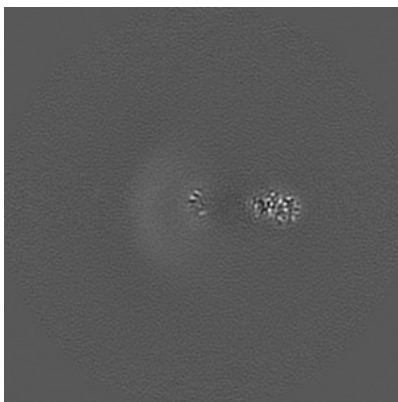
The images above show the map projected in three orthogonal directions.

6.2 Central slices [i](#)

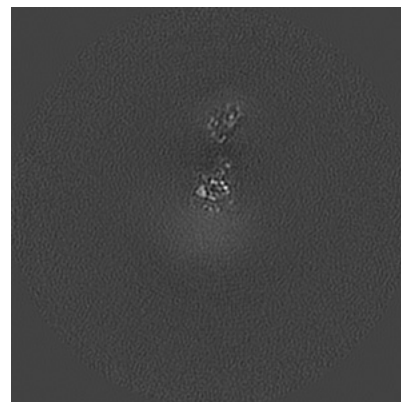
6.2.1 Primary map



X Index: 160

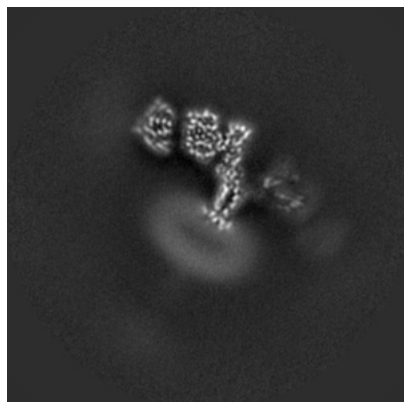


Y Index: 160

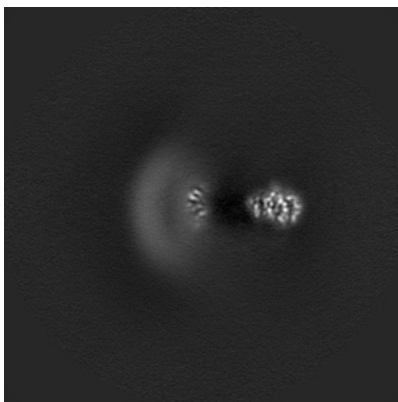


Z Index: 160

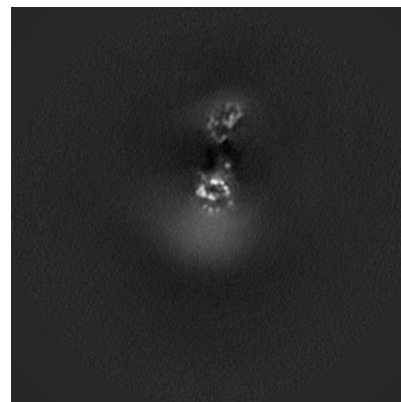
6.2.2 Raw map



X Index: 160



Y Index: 160

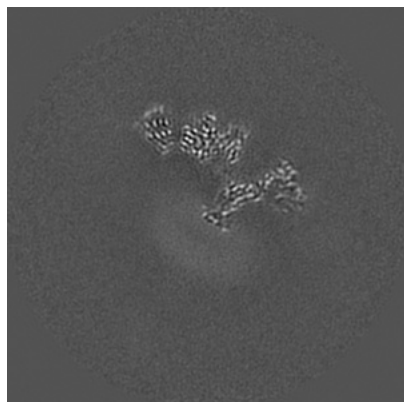


Z Index: 160

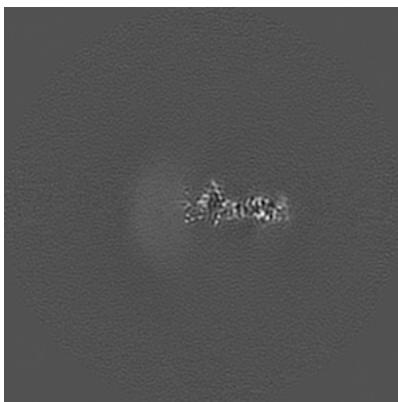
The images above show central slices of the map in three orthogonal directions.

6.3 Largest variance slices [i](#)

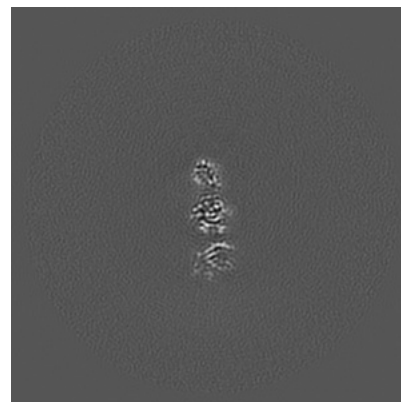
6.3.1 Primary map



X Index: 165

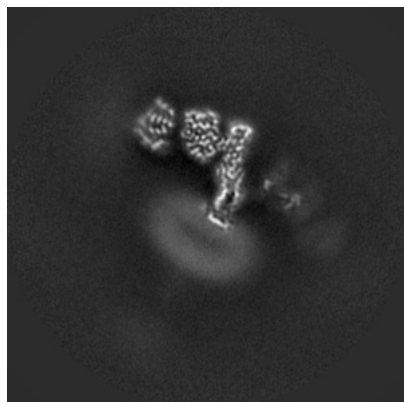


Y Index: 179

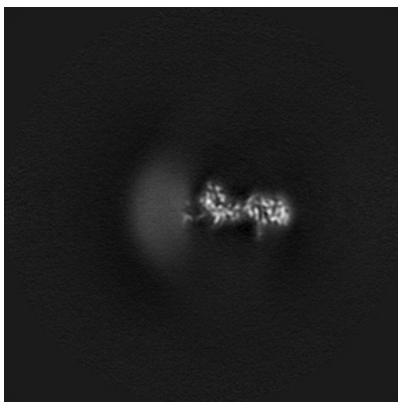


Z Index: 220

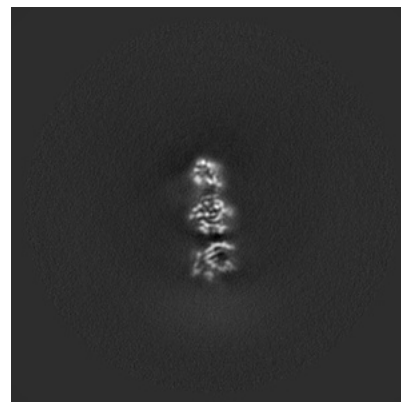
6.3.2 Raw map



X Index: 158



Y Index: 182

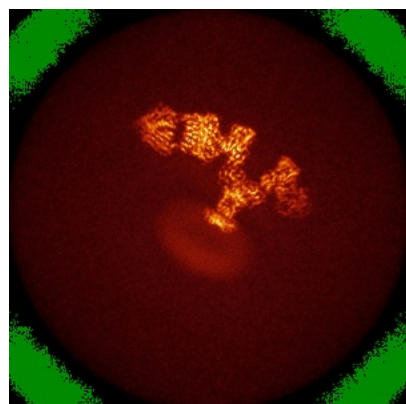


Z Index: 220

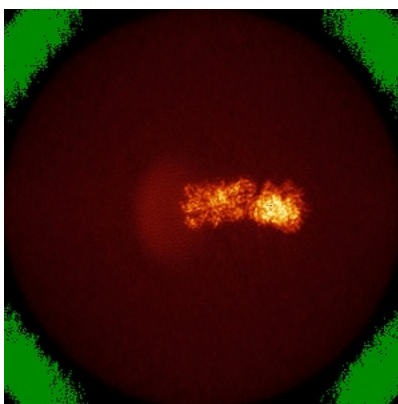
The images above show the largest variance slices of the map in three orthogonal directions.

6.4 Orthogonal standard-deviation projections (False-color) [i](#)

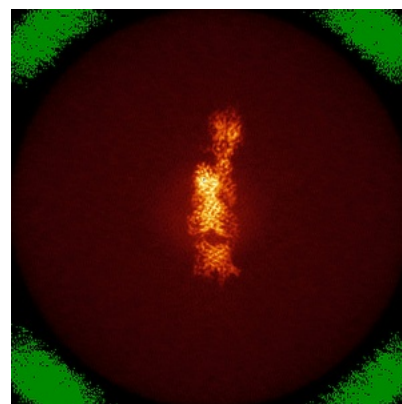
6.4.1 Primary map



X

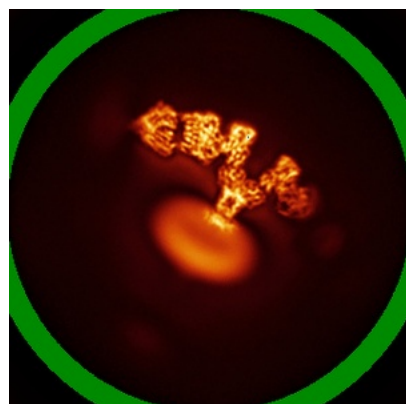


Y

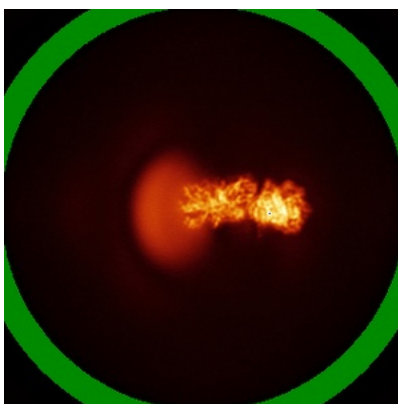


Z

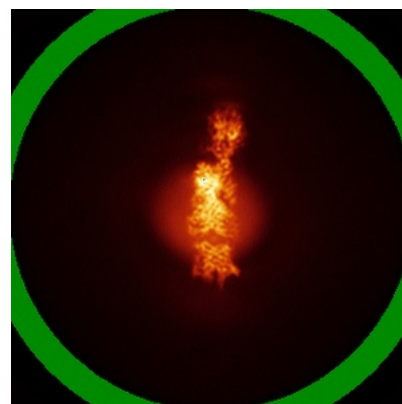
6.4.2 Raw map



X



Y



Z

The images above show the map standard deviation projections with false color in three orthogonal directions. Minimum values are shown in green, max in blue, and dark to light orange shades represent small to large values respectively.

6.5 Orthogonal surface views [i](#)

6.5.1 Primary map



X



Y



Z

The images above show the 3D surface view of the map at the recommended contour level 0.005. These images, in conjunction with the slice images, may facilitate assessment of whether an appropriate contour level has been provided.

6.5.2 Raw map



X



Y



Z

These images show the 3D surface of the raw map. The raw map's contour level was selected so that its surface encloses the same volume as the primary map does at its recommended contour level.

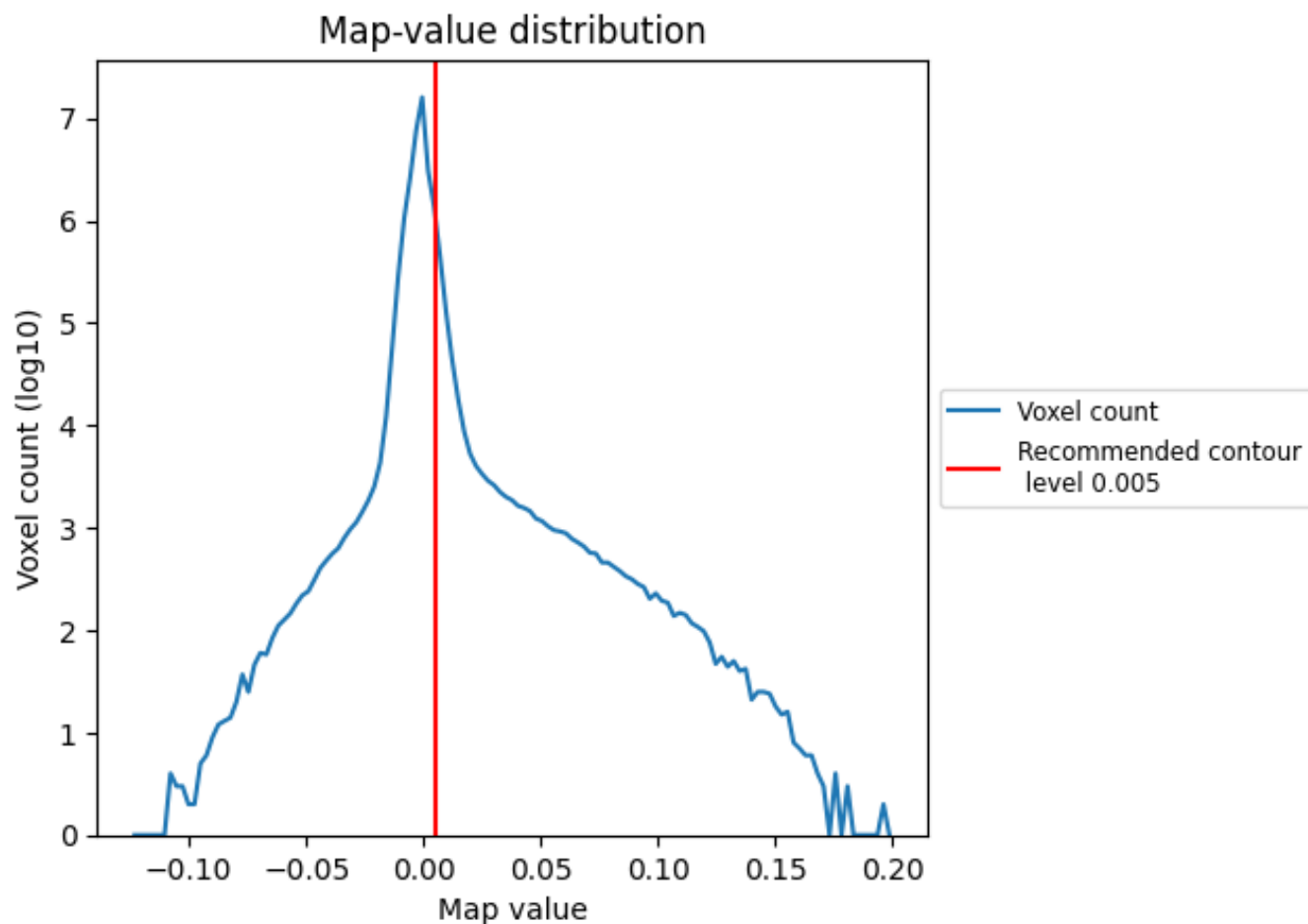
6.6 Mask visualisation [i](#)

This section was not generated. No masks/segmentation were deposited.

7 Map analysis [i](#)

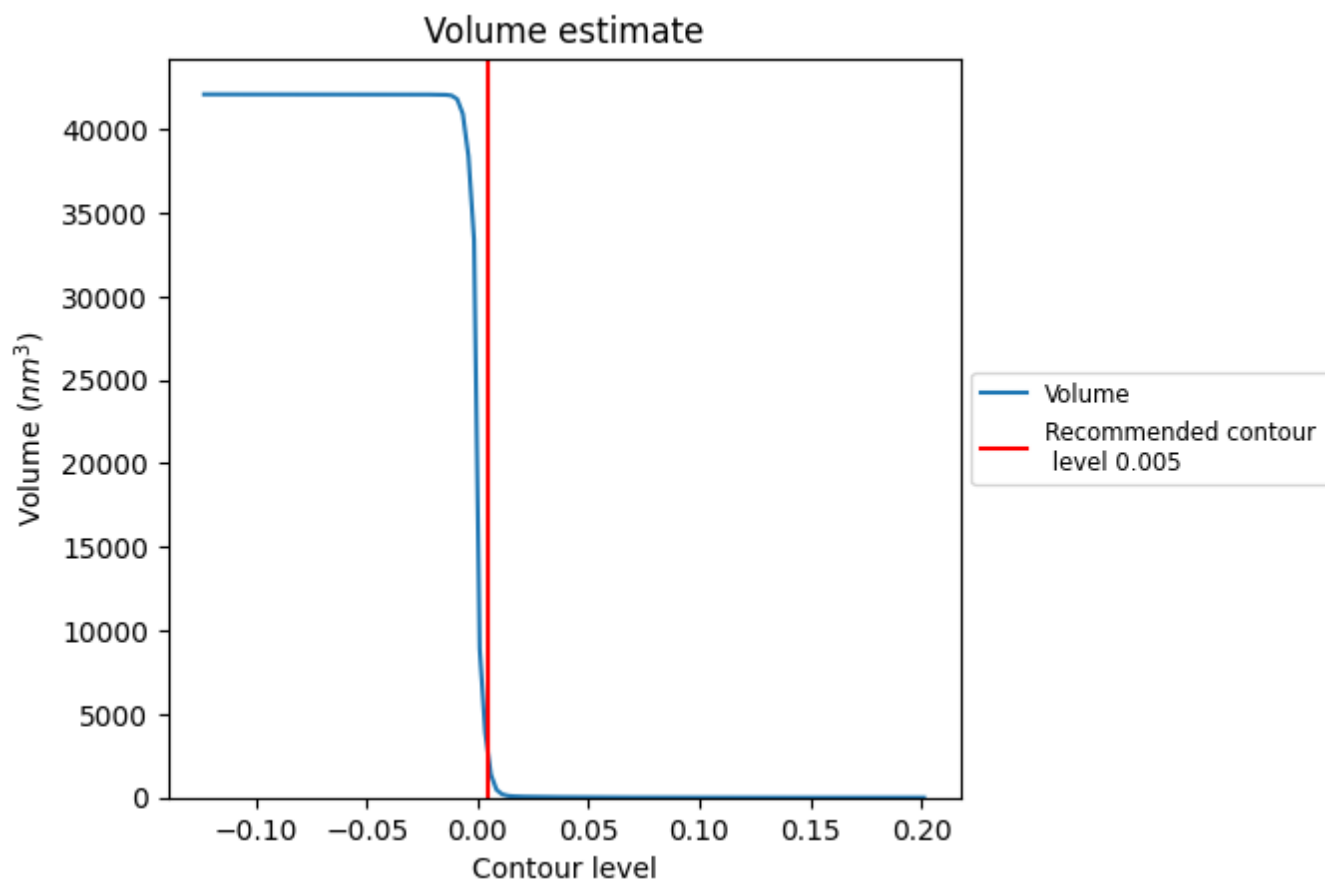
This section contains the results of statistical analysis of the map.

7.1 Map-value distribution [i](#)



The map-value distribution is plotted in 128 intervals along the x-axis. The y-axis is logarithmic. A spike in this graph at zero usually indicates that the volume has been masked.

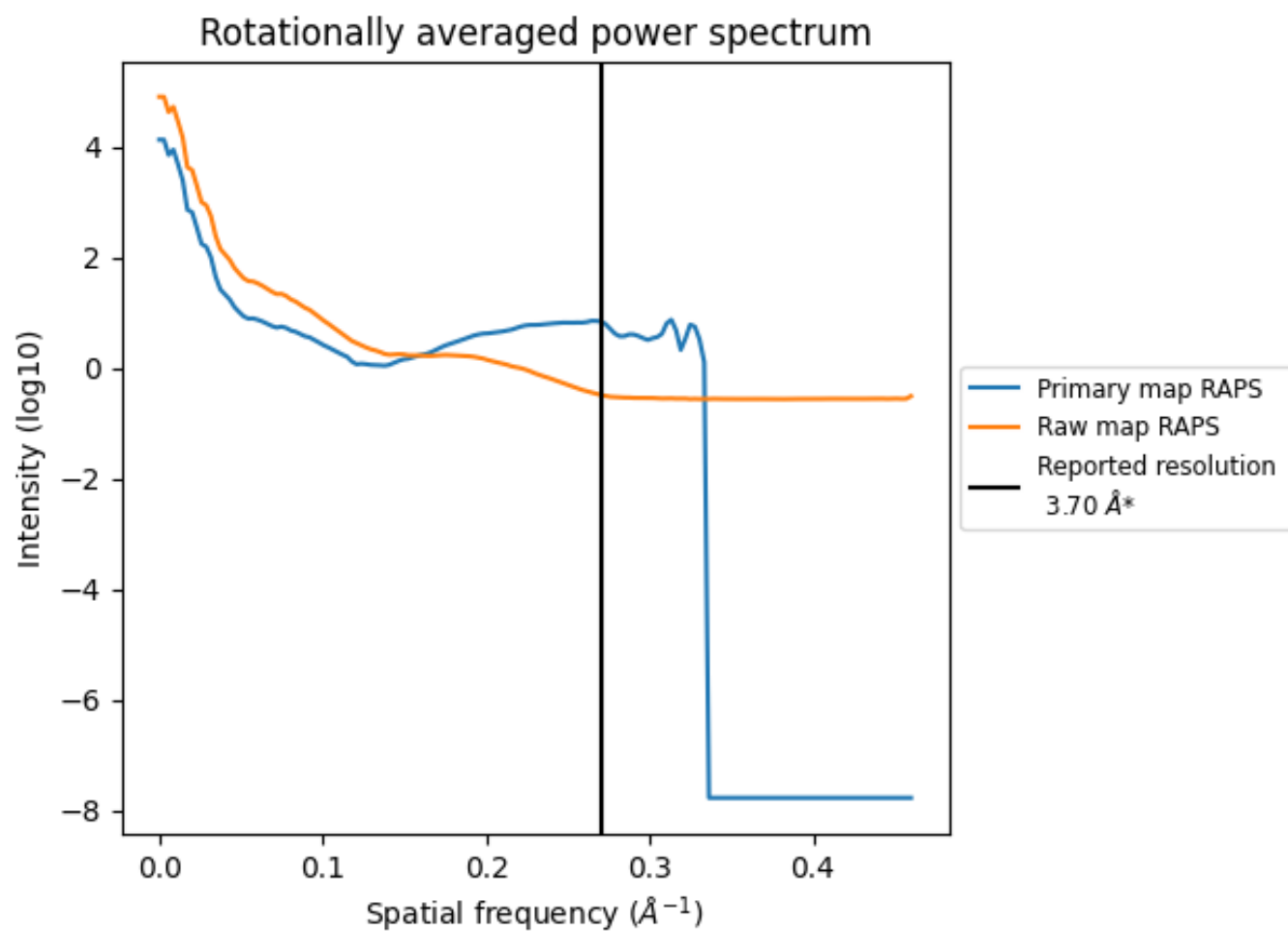
7.2 Volume estimate [i](#)



The volume at the recommended contour level is 2441 nm^3 ; this corresponds to an approximate mass of 2205 kDa.

The volume estimate graph shows how the enclosed volume varies with the contour level. The recommended contour level is shown as a vertical line and the intersection between the line and the curve gives the volume of the enclosed surface at the given level.

7.3 Rotationally averaged power spectrum ⓘ

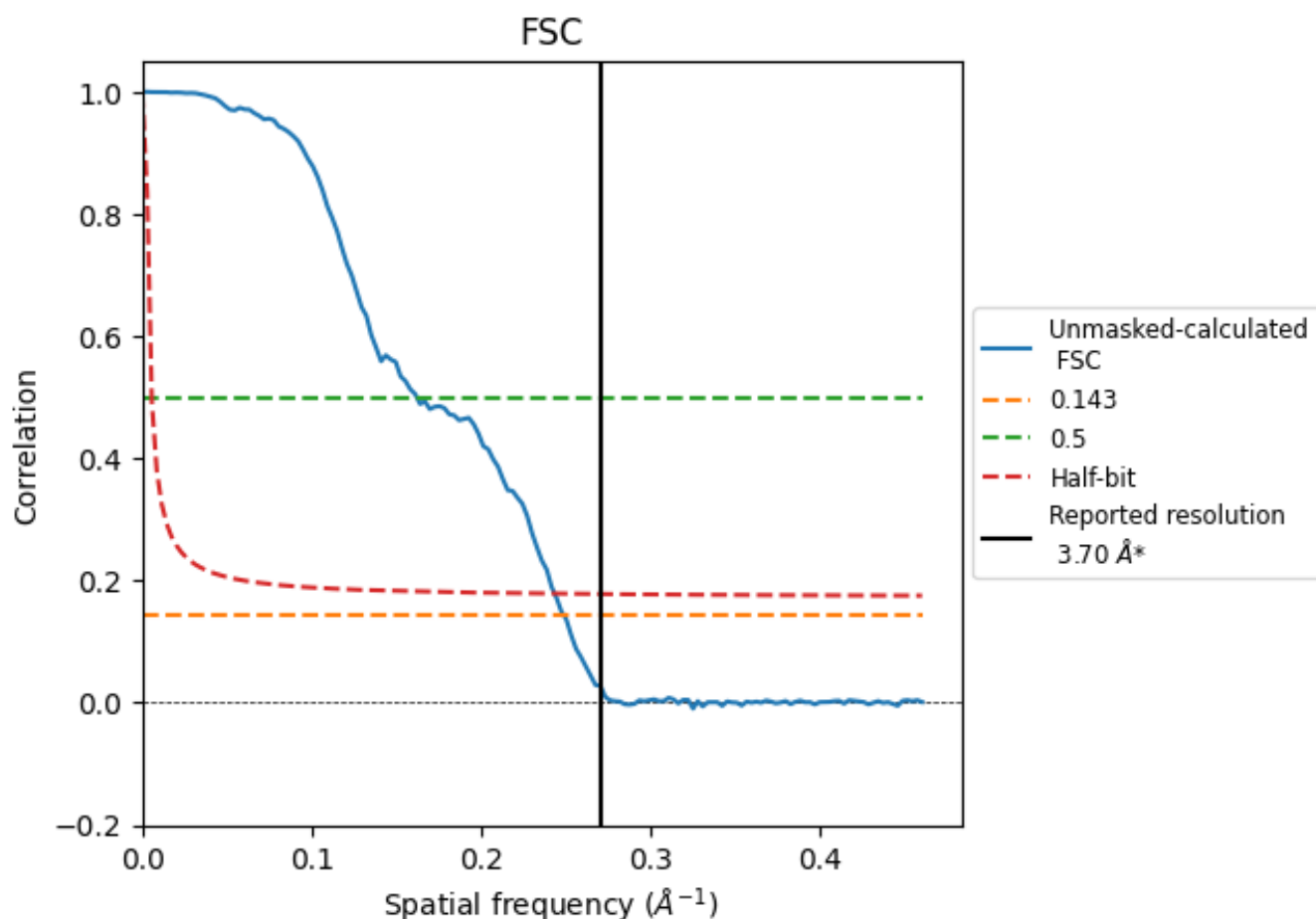


*Reported resolution corresponds to spatial frequency of 0.270 Å⁻¹

8 Fourier-Shell correlation [i](#)

Fourier-Shell Correlation (FSC) is the most commonly used method to estimate the resolution of single-particle and subtomogram-averaged maps. The shape of the curve depends on the imposed symmetry, mask and whether or not the two 3D reconstructions used were processed from a common reference. The reported resolution is shown as a black line. A curve is displayed for the half-bit criterion in addition to lines showing the 0.143 gold standard cut-off and 0.5 cut-off.

8.1 FSC [i](#)



*Reported resolution corresponds to spatial frequency of 0.270 \AA^{-1}

8.2 Resolution estimates [i](#)

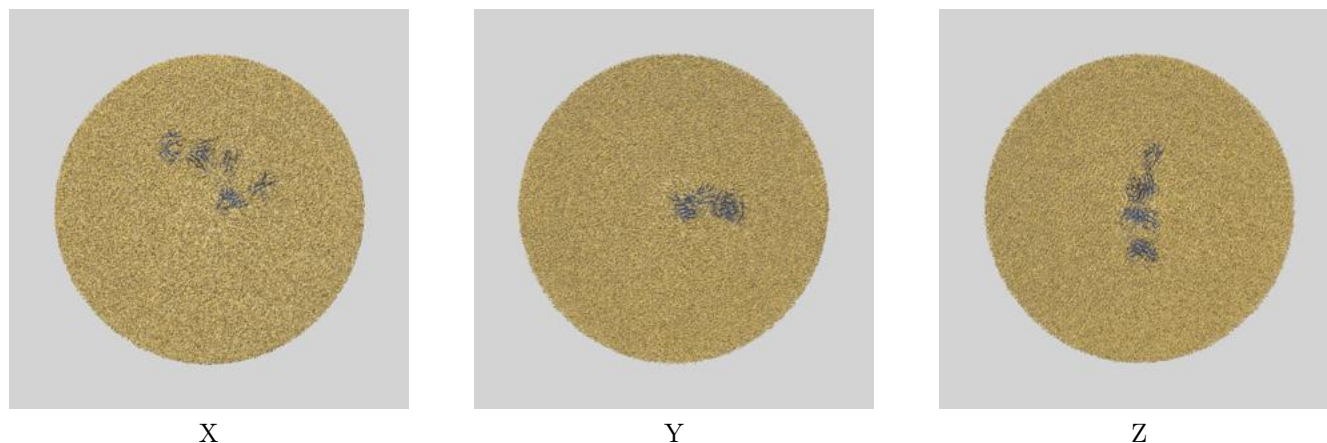
Resolution estimate (Å)	Estimation criterion (FSC cut-off)		
	0.143	0.5	Half-bit
Reported by author	3.70	-	-
Author-provided FSC curve	-	-	-
Unmasked-calculated*	4.02	6.18	4.11

*Resolution estimate based on FSC curve calculated by comparison of deposited half-maps.

9 Map-model fit [i](#)

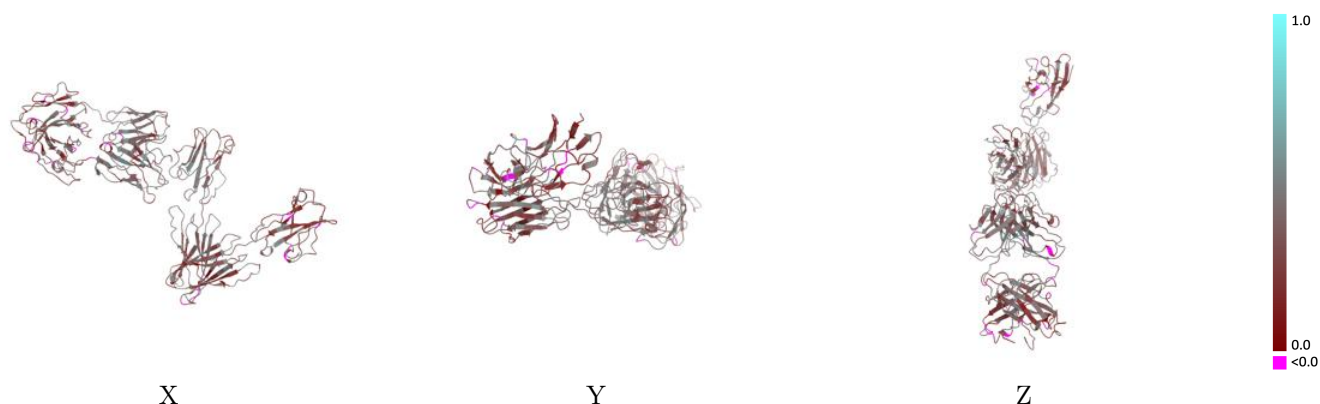
This section contains information regarding the fit between EMDB map EMD-62608 and PDB model 9KWE. Per-residue inclusion information can be found in section [3](#) on page [6](#).

9.1 Map-model overlay [i](#)



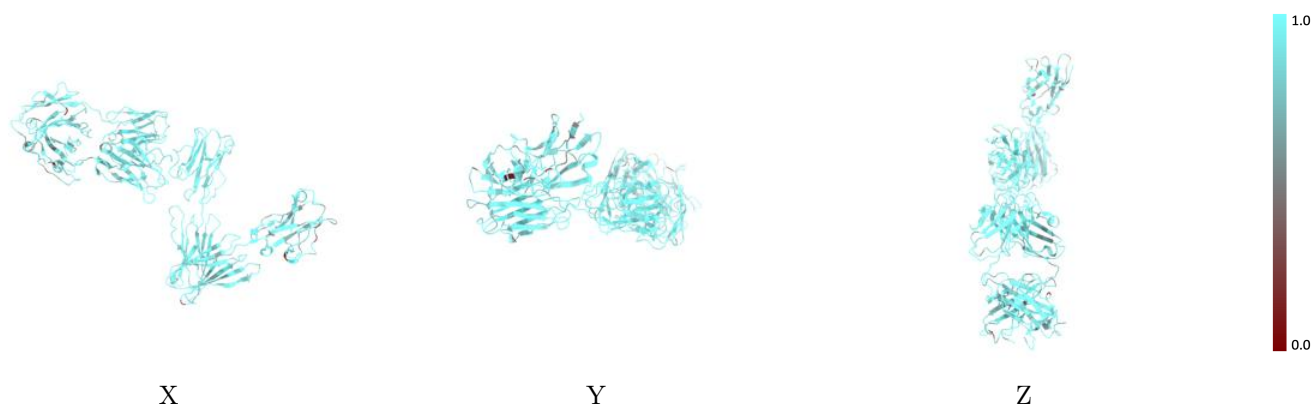
The images above show the 3D surface view of the map at the recommended contour level 0.005 at 50% transparency in yellow overlaid with a ribbon representation of the model coloured in blue. These images allow for the visual assessment of the quality of fit between the atomic model and the map.

9.2 Q-score mapped to coordinate model [i](#)



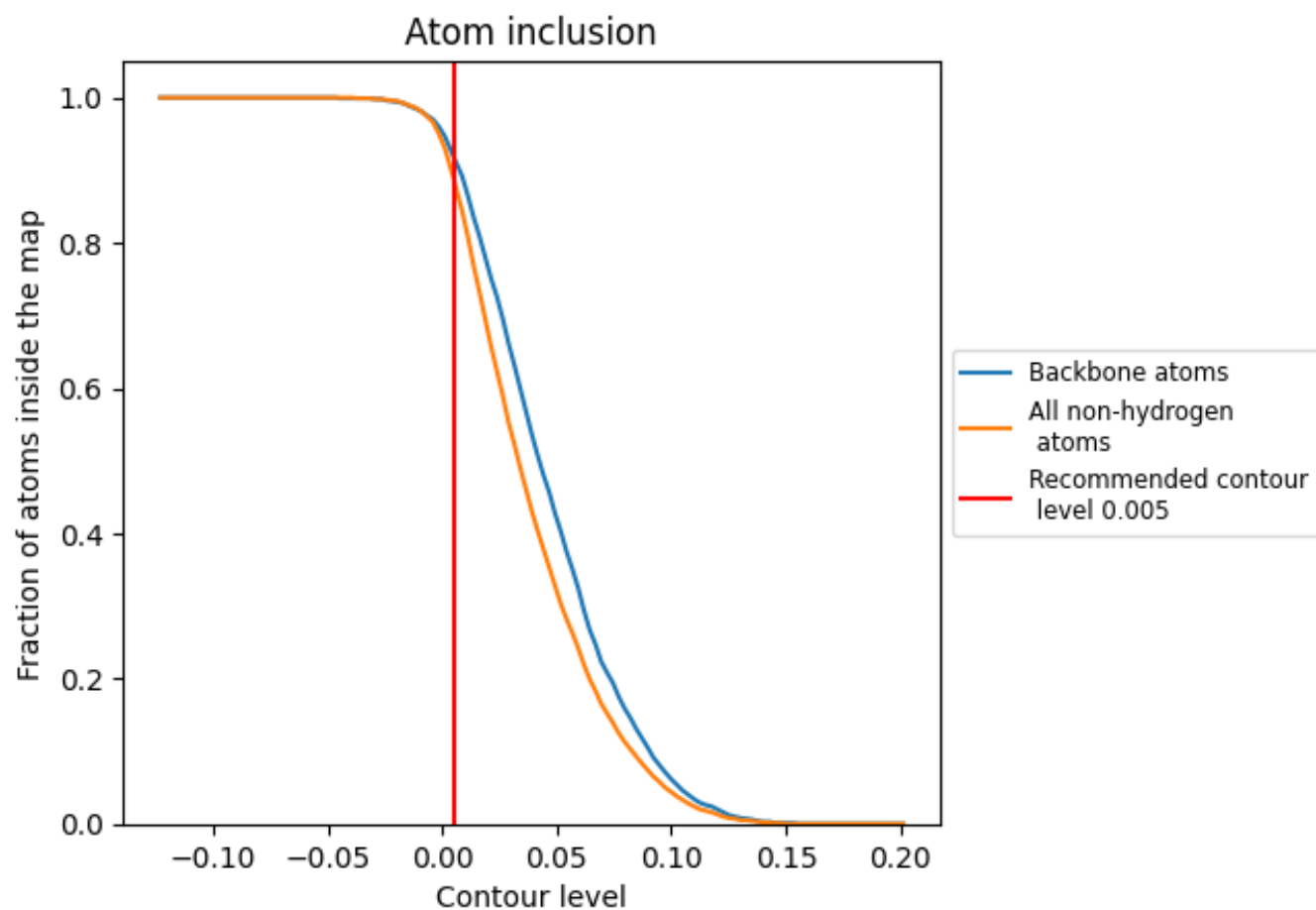
The images above show the model with each residue coloured according to its Q-score. This shows their resolvability in the map with higher Q-score values reflecting better resolvability. Please note: Q-score is calculating the resolvability of atoms, and thus high values are only expected at resolutions at which atoms can be resolved. Low Q-score values may therefore be expected for many entries.

9.3 Atom inclusion mapped to coordinate model [i](#)



The images above show the model with each residue coloured according to its atom inclusion. This shows to what extent they are inside the map at the recommended contour level (0.005).

9.4 Atom inclusion [i](#)



At the recommended contour level, 92% of all backbone atoms, 89% of all non-hydrogen atoms, are inside the map.

9.5 Map-model fit summary ⓘ

The table lists the average atom inclusion at the recommended contour level (0.005) and Q-score for the entire model and for each chain.

Chain	Atom inclusion	Q-score
All	<div></div> 0.8880	<div></div> 0.3480
E	<div></div> 0.9290	<div></div> 0.3630
F	<div></div> 0.8470	<div></div> 0.3210
H	<div></div> 0.8820	<div></div> 0.3560
L	<div></div> 0.8940	<div></div> 0.3520

