



Full wwPDB EM Validation Report ⓘ

Nov 10, 2025 – 04:17 PM JST

PDB ID : 9KMC / pdb_00009kmc
EMDB ID : EMD-62427
Title : Cryo-EM structure of the heterotrimeric interleukin-2 receptor in complex with interleukin-2 and anti-CD25 Fab S417
Authors : Katsura, K.; Matsumoto, T.; Shirouzu, M.
Deposited on : 2024-11-15
Resolution : 2.97 Å(reported)

This is a Full wwPDB EM Validation Report for a publicly released PDB entry.

We welcome your comments at validation@mail.wwpdb.org

A user guide is available at

<https://www.wwpdb.org/validation/2017/EMValidationReportHelp>
with specific help available everywhere you see the ⓘ symbol.

The types of validation reports are described at

<http://www.wwpdb.org/validation/2017/FAQs#types>.

The following versions of software and data (see [references ⓘ](#)) were used in the production of this report:

EMDB validation analysis : 0.0.1.dev129
Mogul : 1.8.5 (274361), CSD as541be (2020)
MolProbity : 4-5-2 with Phenix2.0
Percentile statistics : 20231227.v01 (using entries in the PDB archive December 27th 2023)
EM percentile statistics : 202505.v01 (Using data in the EMDB archive up until May 2025)
MapQ : 1.9.13
Ideal geometry (proteins) : Engh & Huber (2001)
Ideal geometry (DNA, RNA) : Parkinson et al. (1996)
Validation Pipeline (wwPDB-VP) : 2.46

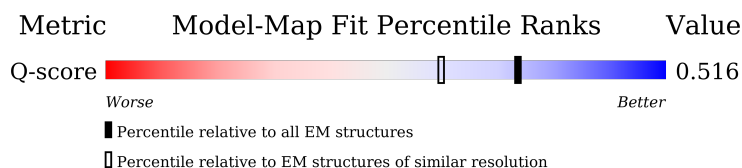
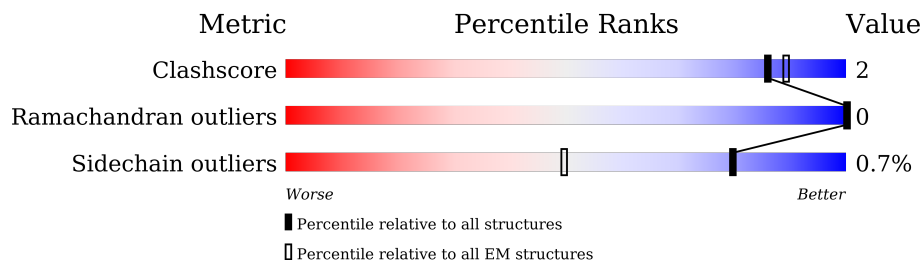
1 Overall quality at a glance

The following experimental techniques were used to determine the structure:

ELECTRON MICROSCOPY

The reported resolution of this entry is 2.97 Å.

Percentile scores (ranging between 0-100) for global validation metrics of the entry are shown in the following graphic. The table shows the number of entries on which the scores are based.




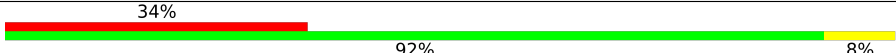

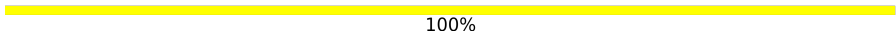



Metric	Whole archive (#Entries)	EM structures (#Entries)	Similar EM resolution (#Entries, resolution range(Å))
Clashscore	210492	15764	-
Ramachandran outliers	207382	16835	-
Sidechain outliers	206894	16415	-
Q-score	-	25397	13205 (2.47 - 3.47)

The table below summarises the geometric issues observed across the polymeric chains and their fit to the map. The red, orange, yellow and green segments of the bar indicate the fraction of residues that contain outliers for ≥ 3 , 2, 1 and 0 types of geometric quality criteria respectively. A grey segment represents the fraction of residues that are not modelled. The numeric value for each fraction is indicated below the corresponding segment, with a dot representing fractions $\leq 5\%$. The upper red bar (where present) indicates the fraction of residues that have poor fit to the EM map (all-atom inclusion $< 40\%$). The numeric value is given above the bar.

Mol	Chain	Length	Quality of chain
1	A	240	<div> <div>9%</div> <div>55%</div> <div>45%</div> </div>
2	B	222	<div> <div>7%</div> <div>90%</div> <div>6%</div> </div>
3	C	241	<div> <div>9%</div> <div>77%</div> <div>19%</div> </div>
4	D	133	<div> <div>12%</div> <div>93%</div> <div>7%</div> </div>

Continued on next page...

Continued from previous page...

Mol	Chain	Length	Quality of chain
5	E	228	
6	F	213	
7	G	3	
7	H	3	
8	I	3	
9	J	2	
9	K	2	

2 Entry composition

There are 10 unique types of molecules in this entry. The entry contains 17613 atoms, of which 8678 are hydrogens and 0 are deuteriums.

In the tables below, the AltConf column contains the number of residues with at least one atom in alternate conformation and the Trace column contains the number of residues modelled with at most 2 atoms.

- Molecule 1 is a protein called Interleukin-2 receptor subunit alpha.

Mol	Chain	Residues	Atoms						AltConf	Trace
1	A	133	Total	C	H	N	O	S	0	0
			2030	647	984	189	195	15		

There are 21 discrepancies between the modelled and reference sequences:

Chain	Residue	Modelled	Actual	Comment	Reference
A	241	GLY	-	expression tag	UNP P01589
A	242	GLY	-	expression tag	UNP P01589
A	243	GLY	-	expression tag	UNP P01589
A	244	GLY	-	expression tag	UNP P01589
A	245	SER	-	expression tag	UNP P01589
A	246	GLY	-	expression tag	UNP P01589
A	247	GLY	-	expression tag	UNP P01589
A	248	GLY	-	expression tag	UNP P01589
A	249	GLY	-	expression tag	UNP P01589
A	250	SER	-	expression tag	UNP P01589
A	251	GLY	-	expression tag	UNP P01589
A	252	GLY	-	expression tag	UNP P01589
A	253	GLY	-	expression tag	UNP P01589
A	254	GLY	-	expression tag	UNP P01589
A	255	SER	-	expression tag	UNP P01589
A	256	HIS	-	expression tag	UNP P01589
A	257	HIS	-	expression tag	UNP P01589
A	258	HIS	-	expression tag	UNP P01589
A	259	HIS	-	expression tag	UNP P01589
A	260	HIS	-	expression tag	UNP P01589
A	261	HIS	-	expression tag	UNP P01589

- Molecule 2 is a protein called Interleukin-2 receptor subunit beta.

Mol	Chain	Residues	Atoms						AltConf	Trace
2	B	208	Total	C	H	N	O	S	0	0
			3344	1079	1646	301	308	10		

There are 8 discrepancies between the modelled and reference sequences:

Chain	Residue	Modelled	Actual	Comment	Reference
B	241	HIS	-	expression tag	UNP P14784
B	242	HIS	-	expression tag	UNP P14784
B	243	HIS	-	expression tag	UNP P14784
B	244	HIS	-	expression tag	UNP P14784
B	245	HIS	-	expression tag	UNP P14784
B	246	HIS	-	expression tag	UNP P14784
B	247	HIS	-	expression tag	UNP P14784
B	248	HIS	-	expression tag	UNP P14784

- Molecule 3 is a protein called Cytokine receptor common subunit gamma.

Mol	Chain	Residues	Atoms						AltConf	Trace
3	C	195	Total	C	H	N	O	S	0	0
			3216	1052	1561	294	301	8		

There are 9 discrepancies between the modelled and reference sequences:

Chain	Residue	Modelled	Actual	Comment	Reference
C	75	GLN	ASN	conflict	UNP P31785
C	256	HIS	-	expression tag	UNP P31785
C	257	HIS	-	expression tag	UNP P31785
C	258	HIS	-	expression tag	UNP P31785
C	259	HIS	-	expression tag	UNP P31785
C	260	HIS	-	expression tag	UNP P31785
C	261	HIS	-	expression tag	UNP P31785
C	262	HIS	-	expression tag	UNP P31785
C	263	HIS	-	expression tag	UNP P31785

- Molecule 4 is a protein called Interleukin-2.

Mol	Chain	Residues	Atoms						AltConf	Trace
4	D	133	Total	C	H	N	O	S	0	0
			2199	693	1118	178	203	7		

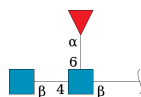
- Molecule 5 is a protein called Fab S417 heavy chain.

Mol	Chain	Residues	Atoms						AltConf	Trace
5	E	220	Total	C	H	N	O	S	0	0
			3281	1048	1628	275	325	5		

- Molecule 6 is a protein called Fab S417 light chain.

Mol	Chain	Residues	Atoms						AltConf	Trace
6	F	213	Total	C	H	N	O	S	0	0
			3179	1008	1562	272	331	6		

- Molecule 7 is an oligosaccharide called 2-acetamido-2-deoxy-beta-D-glucopyranose-(1-4)-[alpha-L-fucopyranose-(1-6)]2-acetamido-2-deoxy-beta-D-glucopyranose.



Mol	Chain	Residues	Atoms						AltConf	Trace
7	G	3	Total	C	H	N	O		0	0
			75	22	37	2	14			
7	H	3	Total	C	H	N	O		0	0
			75	22	37	2	14			

- Molecule 8 is an oligosaccharide called beta-D-mannopyranose-(1-4)-2-acetamido-2-deoxy-beta-D-glucopyranose-(1-4)-2-acetamido-2-deoxy-beta-D-glucopyranose.



Mol	Chain	Residues	Atoms						AltConf	Trace
8	I	3	Total	C	H	N	O		0	0
			76	22	37	2	15			

- Molecule 9 is an oligosaccharide called 2-acetamido-2-deoxy-beta-D-glucopyranose-(1-4)-2-acetamido-2-deoxy-beta-D-glucopyranose.



Mol	Chain	Residues	Atoms						AltConf	Trace
9	J	2	Total	C	H	N	O		0	0
			55	16	27	2	10			
9	K	2	Total	C	H	N	O		0	0
			55	16	27	2	10			

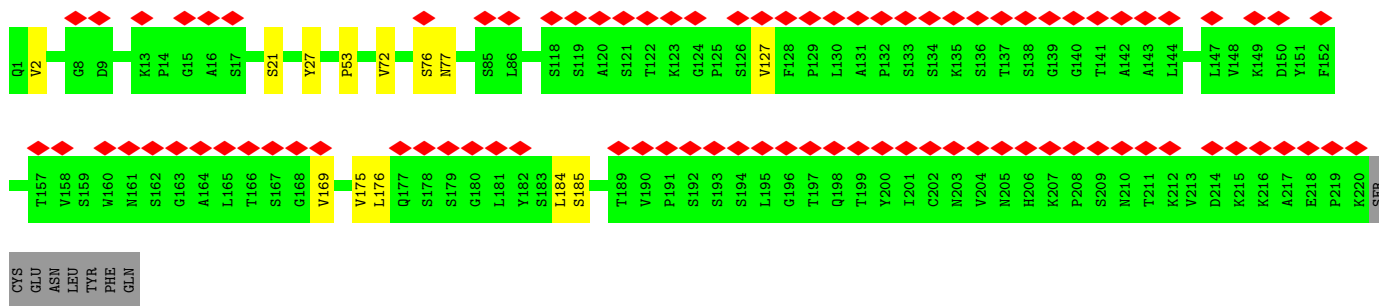
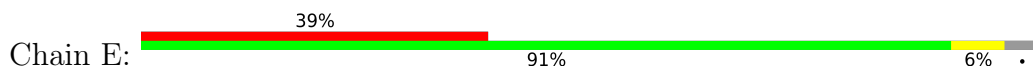
- Molecule 10 is 2-acetamido-2-deoxy-beta-D-glucopyranose (CCD ID: NAG) (formula: C₈H₁₅NO₆).



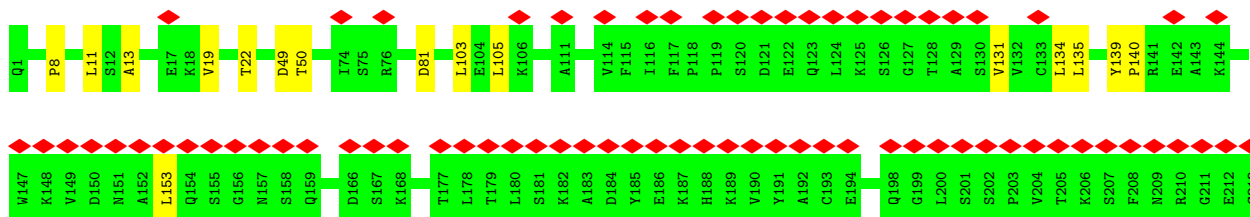
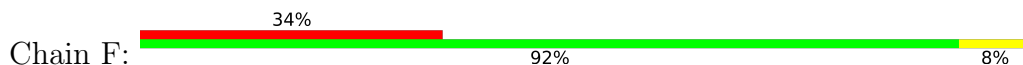
Mol	Chain	Residues	Atoms					AltConf
			Total	C	H	N	O	
10	C	1	28	8	14	1	5	0



- Molecule 5: Fab S417 heavy chain



- Molecule 6: Fab S417 light chain



- Molecule 7: 2-acetamido-2-deoxy-beta-D-glucopyranose-(1-4)-[alpha-L-fucopyranose-(1-6)]2-acetamido-2-deoxy-beta-D-glucopyranose



- Molecule 7: 2-acetamido-2-deoxy-beta-D-glucopyranose-(1-4)-[alpha-L-fucopyranose-(1-6)]2-acetamido-2-deoxy-beta-D-glucopyranose



- Molecule 8: beta-D-mannopyranose-(1-4)-2-acetamido-2-deoxy-beta-D-glucopyranose-(1-4)-2-acetamido-2-deoxy-beta-D-glucopyranose





- Molecule 9: 2-acetamido-2-deoxy-beta-D-glucopyranose-(1-4)-2-acetamido-2-deoxy-beta-D-glucopyranose



- Molecule 9: 2-acetamido-2-deoxy-beta-D-glucopyranose-(1-4)-2-acetamido-2-deoxy-beta-D-glucopyranose



4 Experimental information

Property	Value	Source
EM reconstruction method	SINGLE PARTICLE	Depositor
Imposed symmetry	POINT, Not provided	
Number of particles used	353002	Depositor
Resolution determination method	FSC 0.143 CUT-OFF	Depositor
CTF correction method	PHASE FLIPPING AND AMPLITUDE CORRECTION	Depositor
Microscope	TFS KRIOS	Depositor
Voltage (kV)	300	Depositor
Electron dose ($e^-/\text{\AA}^2$)	50.4	Depositor
Minimum defocus (nm)	800	Depositor
Maximum defocus (nm)	2000	Depositor
Magnification	Not provided	
Image detector	GATAN K3 (6k x 4k)	Depositor
Maximum map value	4.878	Depositor
Minimum map value	-3.625	Depositor
Average map value	0.000	Depositor
Map value standard deviation	0.059	Depositor
Recommended contour level	0.4	Depositor
Map size (\AA)	314.83, 314.83, 314.83	wwPDB
Map dimensions	380, 380, 380	wwPDB
Map angles ($^\circ$)	90.0, 90.0, 90.0	wwPDB
Pixel spacing (\AA)	0.8285, 0.8285, 0.8285	Depositor

5 Model quality [i](#)

5.1 Standard geometry [i](#)

Bond lengths and bond angles in the following residue types are not validated in this section: BMA, NAG, FUC

The Z score for a bond length (or angle) is the number of standard deviations the observed value is removed from the expected value. A bond length (or angle) with $|Z| > 5$ is considered an outlier worth inspection. RMSZ is the root-mean-square of all Z scores of the bond lengths (or angles).

Mol	Chain	Bond lengths		Bond angles	
		RMSZ	$\# Z > 5$	RMSZ	$\# Z > 5$
1	A	0.16	0/1074	0.27	0/1452
2	B	0.19	0/1747	0.31	0/2385
3	C	0.17	0/1710	0.31	0/2329
4	D	0.17	0/1099	0.29	0/1484
5	E	0.12	0/1695	0.26	0/2311
6	F	0.13	0/1655	0.25	0/2251
All	All	0.16	0/8980	0.28	0/12212

There are no bond length outliers.

There are no bond angle outliers.

There are no chirality outliers.

There are no planarity outliers.

5.2 Too-close contacts [i](#)

In the following table, the Non-H and H(model) columns list the number of non-hydrogen atoms and hydrogen atoms in the chain respectively. The H(added) column lists the number of hydrogen atoms added and optimized by MolProbity. The Clashes column lists the number of clashes within the asymmetric unit, whereas Symm-Clashes lists symmetry-related clashes.

Mol	Chain	Non-H	H(model)	H(added)	Clashes	Symm-Clashes
1	A	1046	984	980	2	0
2	B	1698	1646	1640	8	0
3	C	1655	1561	1557	4	0
4	D	1081	1118	1115	5	0
5	E	1653	1628	1627	7	0
6	F	1617	1562	1562	10	0
7	G	38	37	34	0	0

Continued on next page...

Continued from previous page...

Mol	Chain	Non-H	H(model)	H(added)	Clashes	Symm-Clashes
7	H	38	37	33	1	0
8	I	39	37	34	0	0
9	J	28	27	25	1	0
9	K	28	27	25	0	0
10	C	14	14	13	0	0
All	All	8935	8678	8645	35	0

The all-atom clashscore is defined as the number of clashes found per 1000 atoms (including hydrogen atoms). The all-atom clashscore for this structure is 2.

All (35) close contacts within the same asymmetric unit are listed below, sorted by their clash magnitude.

Atom-1	Atom-2	Interatomic distance (Å)	Clash overlap (Å)
6:F:11:LEU:HD22	6:F:103:LEU:HD13	1.84	0.59
3:C:65:PHE:CD2	9:J:1:NAG:H82	2.38	0.59
2:B:109:LEU:CD2	2:B:118:VAL:HG22	2.36	0.56
4:D:42:GLN:O	4:D:46:ASN:ND2	2.37	0.54
1:A:63:LEU:CD1	4:D:89:VAL:HG23	2.39	0.52
2:B:94:ASP:O	2:B:94:ASP:OD2	2.28	0.52
6:F:134:LEU:C	6:F:135:LEU:HD12	2.35	0.52
3:C:74:TRP:CD1	3:C:76:SER:HG	2.32	0.48
6:F:11:LEU:C	6:F:11:LEU:HD23	2.39	0.48
5:E:184:LEU:HD23	5:E:185:SER:N	2.29	0.48
6:F:11:LEU:HD22	6:F:103:LEU:CD1	2.43	0.47
2:B:109:LEU:HD23	2:B:118:VAL:HG22	1.97	0.47
2:B:61:VAL:HG13	2:B:88:LEU:HD21	1.98	0.45
6:F:49:ASP:O	6:F:50:THR:HB	2.18	0.44
5:E:2:VAL:HG13	5:E:27:TYR:CD1	2.52	0.44
5:E:77:ASN:O	5:E:77:ASN:OD1	2.34	0.44
6:F:81:ASP:O	6:F:103:LEU:HD23	2.18	0.44
4:D:147:SER:O	4:D:151:THR:HG23	2.18	0.44
5:E:169:VAL:HG23	5:E:169:VAL:O	2.17	0.43
6:F:13:ALA:HB2	6:F:19:VAL:HG11	2.00	0.43
4:D:55:LYS:O	4:D:59:MET:HG3	2.19	0.42
2:B:140:VAL:O	2:B:140:VAL:HG23	2.18	0.42
6:F:105:LEU:HD23	6:F:105:LEU:N	2.34	0.42
2:B:107:ARG:NH1	2:B:121:ILE:HD11	2.35	0.42
5:E:175:VAL:HG22	5:E:176:LEU:H	1.84	0.42
5:E:76:SER:O	5:E:77:ASN:OD1	2.37	0.42
1:A:36:PHE:CD1	1:A:36:PHE:C	2.98	0.41
3:C:166:SER:OG	3:C:167:GLU:N	2.53	0.41

Continued on next page...

Continued from previous page...

Atom-1	Atom-2	Interatomic distance (Å)	Clash overlap (Å)
2:B:94:ASP:OD2	2:B:94:ASP:C	2.64	0.41
3:C:188:GLN:HG2	3:C:197:TRP:HB3	2.03	0.41
4:D:77:GLN:O	4:D:81:GLU:HG2	2.21	0.41
6:F:139:TYR:CG	6:F:140:PRO:HA	2.56	0.41
6:F:8:PRO:HG2	6:F:11:LEU:HB2	2.03	0.41
2:B:107:ARG:HD3	7:H:3:FUC:H62	2.04	0.40
5:E:53:PRO:HB3	5:E:72:VAL:HG11	2.03	0.40

There are no symmetry-related clashes.

5.3 Torsion angles [i](#)

5.3.1 Protein backbone [i](#)

In the following table, the Percentiles column shows the percent Ramachandran outliers of the chain as a percentile score with respect to all PDB entries followed by that with respect to all EM entries.

The Analysed column shows the number of residues for which the backbone conformation was analysed, and the total number of residues.

Mol	Chain	Analysed	Favoured	Allowed	Outliers	Percentiles	
1	A	129/240 (54%)	122 (95%)	7 (5%)	0	100	100
2	B	206/222 (93%)	194 (94%)	12 (6%)	0	100	100
3	C	193/241 (80%)	178 (92%)	15 (8%)	0	100	100
4	D	131/133 (98%)	128 (98%)	3 (2%)	0	100	100
5	E	218/228 (96%)	210 (96%)	8 (4%)	0	100	100
6	F	211/213 (99%)	205 (97%)	6 (3%)	0	100	100
All	All	1088/1277 (85%)	1037 (95%)	51 (5%)	0	100	100

There are no Ramachandran outliers to report.

5.3.2 Protein sidechains [i](#)

In the following table, the Percentiles column shows the percent sidechain outliers of the chain as a percentile score with respect to all PDB entries followed by that with respect to all EM entries.

The Analysed column shows the number of residues for which the sidechain conformation was

analysed, and the total number of residues.

Mol	Chain	Analysed	Rotameric	Outliers	Percentiles	
1	A	115/205 (56%)	115 (100%)	0	100	100
2	B	188/200 (94%)	188 (100%)	0	100	100
3	C	188/232 (81%)	186 (99%)	2 (1%)	70	86
4	D	126/126 (100%)	126 (100%)	0	100	100
5	E	187/195 (96%)	185 (99%)	2 (1%)	70	86
6	F	185/185 (100%)	182 (98%)	3 (2%)	58	81
All	All	989/1143 (86%)	982 (99%)	7 (1%)	80	91

All (7) residues with a non-rotameric sidechain are listed below:

Mol	Chain	Res	Type
3	C	119	LYS
3	C	209	SER
5	E	21	SER
5	E	127	VAL
6	F	22	THR
6	F	131	VAL
6	F	153	LEU

Sometimes sidechains can be flipped to improve hydrogen bonding and reduce clashes. All (9) such sidechains are listed below:

Mol	Chain	Res	Type
2	B	72	GLN
2	B	214	GLN
3	C	180	ASN
3	C	206	HIS
5	E	3	GLN
5	E	170	HIS
5	E	177	GLN
6	F	137	ASN
6	F	159	GLN

5.3.3 RNA ⓘ

There are no RNA molecules in this entry.

5.4 Non-standard residues in protein, DNA, RNA chains ⓘ

There are no non-standard protein/DNA/RNA residues in this entry.

5.5 Carbohydrates ⓘ

13 monosaccharides are modelled in this entry.

In the following table, the Counts columns list the number of bonds (or angles) for which Mogul statistics could be retrieved, the number of bonds (or angles) that are observed in the model and the number of bonds (or angles) that are defined in the Chemical Component Dictionary. The Link column lists molecule types, if any, to which the group is linked. The Z score for a bond length (or angle) is the number of standard deviations the observed value is removed from the expected value. A bond length (or angle) with $|Z| > 2$ is considered an outlier worth inspection. RMSZ is the root-mean-square of all Z scores of the bond lengths (or angles).

Mol	Type	Chain	Res	Link	Bond lengths			Bond angles		
					Counts	RMSZ	# Z > 2	Counts	RMSZ	# Z > 2
7	NAG	G	1	7,2	14,14,15	0.75	0	17,19,21	1.82	4 (23%)
7	NAG	G	2	7	14,14,15	0.74	0	17,19,21	0.87	0
7	FUC	G	3	7	10,10,11	0.86	0	14,14,16	1.05	0
7	NAG	H	1	7,2	14,14,15	0.78	0	17,19,21	1.05	1 (5%)
7	NAG	H	2	7	14,14,15	0.73	0	17,19,21	2.02	3 (17%)
7	FUC	H	3	7	10,10,11	0.85	0	14,14,16	0.95	0
8	NAG	I	1	2,8	14,14,15	0.79	0	17,19,21	0.90	1 (5%)
8	NAG	I	2	8	14,14,15	0.78	0	17,19,21	0.82	0
8	BMA	I	3	8	11,11,12	0.83	0	15,15,17	1.81	1 (6%)
9	NAG	J	1	3,9	14,14,15	0.76	0	17,19,21	1.21	2 (11%)
9	NAG	J	2	9	14,14,15	0.77	0	17,19,21	1.09	1 (5%)
9	NAG	K	1	3,9	14,14,15	0.78	0	17,19,21	1.04	1 (5%)
9	NAG	K	2	9	14,14,15	0.72	0	17,19,21	0.88	0

In the following table, the Chirals column lists the number of chiral outliers, the number of chiral centers analysed, the number of these observed in the model and the number defined in the Chemical Component Dictionary. Similar counts are reported in the Torsion and Rings columns. '-' means no outliers of that kind were identified.

Mol	Type	Chain	Res	Link	Chirals	Torsions	Rings
7	NAG	G	1	7,2	-	2/6/23/26	0/1/1/1
7	NAG	G	2	7	-	0/6/23/26	0/1/1/1
7	FUC	G	3	7	-	-	0/1/1/1
7	NAG	H	1	7,2	-	0/6/23/26	0/1/1/1
7	NAG	H	2	7	-	0/6/23/26	0/1/1/1

Continued on next page...

Continued from previous page...

Mol	Type	Chain	Res	Link	Chirals	Torsions	Rings
7	FUC	H	3	7	-	-	0/1/1/1
8	NAG	I	1	2,8	-	2/6/23/26	0/1/1/1
8	NAG	I	2	8	-	0/6/23/26	0/1/1/1
8	BMA	I	3	8	-	0/2/19/22	0/1/1/1
9	NAG	J	1	3,9	-	1/6/23/26	0/1/1/1
9	NAG	J	2	9	-	0/6/23/26	0/1/1/1
9	NAG	K	1	3,9	-	0/6/23/26	0/1/1/1
9	NAG	K	2	9	-	0/6/23/26	0/1/1/1

There are no bond length outliers.

All (14) bond angle outliers are listed below:

Mol	Chain	Res	Type	Atoms	Z	Observed(°)	Ideal(°)
8	I	3	BMA	C1-O5-C5	5.34	119.42	112.19
7	H	2	NAG	O4-C4-C5	5.02	121.76	109.30
7	H	2	NAG	C3-C4-C5	4.74	118.69	110.24
7	G	1	NAG	C1-O5-C5	4.51	118.31	112.19
9	J	1	NAG	O5-C1-C2	-3.89	105.15	111.29
7	G	1	NAG	C4-C3-C2	-3.39	106.05	111.02
7	H	1	NAG	C1-O5-C5	3.16	116.48	112.19
7	H	2	NAG	O4-C4-C3	3.09	117.48	110.35
7	G	1	NAG	O4-C4-C5	2.66	115.91	109.30
9	J	2	NAG	C1-O5-C5	2.64	115.77	112.19
9	K	1	NAG	O5-C1-C2	-2.46	107.40	111.29
7	G	1	NAG	C3-C4-C5	-2.42	105.92	110.24
9	J	1	NAG	C1-C2-N2	2.11	114.08	110.49
8	I	1	NAG	O5-C1-C2	-2.06	108.04	111.29

There are no chirality outliers.

All (5) torsion outliers are listed below:

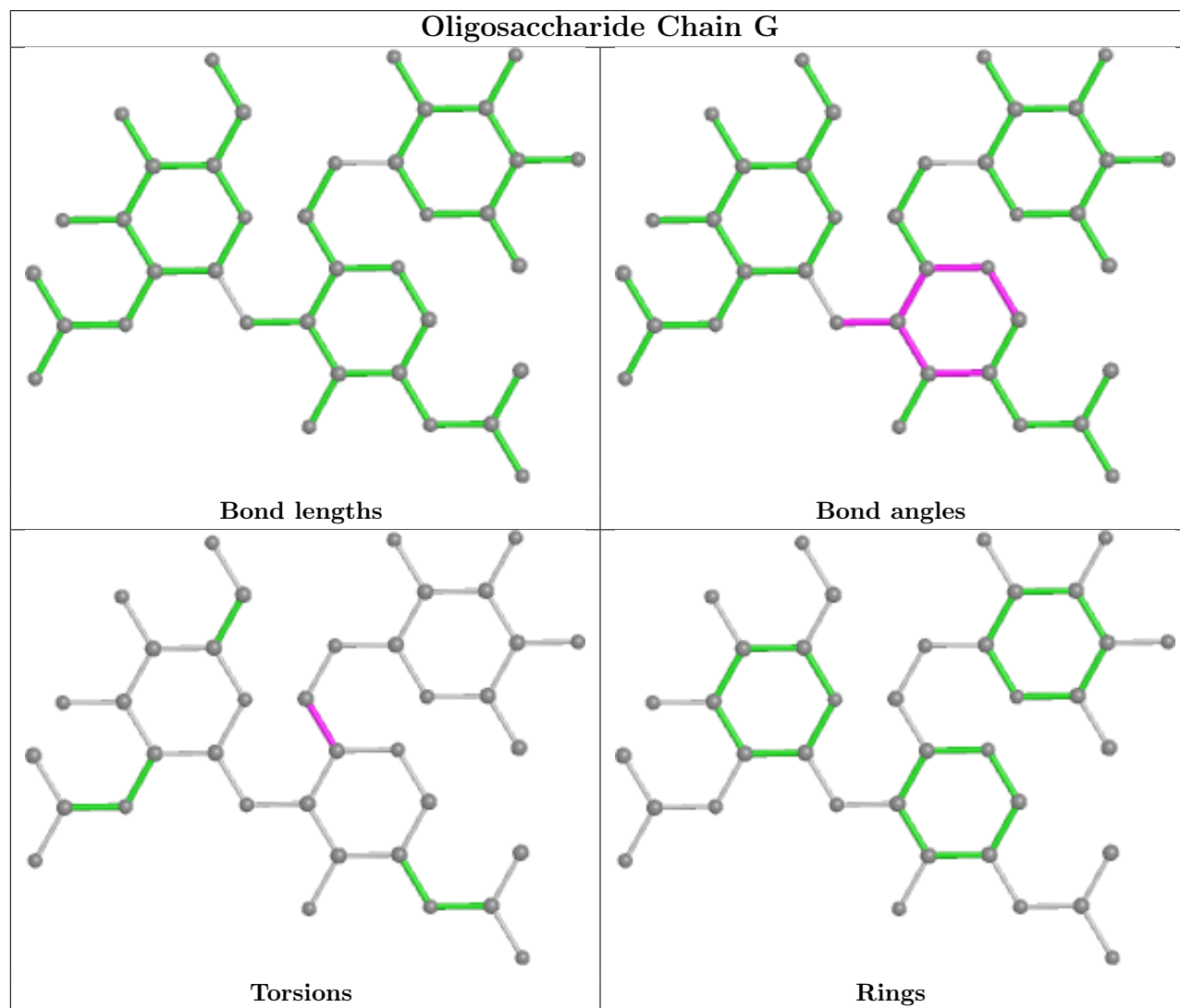
Mol	Chain	Res	Type	Atoms
7	G	1	NAG	C4-C5-C6-O6
8	I	1	NAG	O5-C5-C6-O6
7	G	1	NAG	O5-C5-C6-O6
8	I	1	NAG	C4-C5-C6-O6
9	J	1	NAG	O5-C5-C6-O6

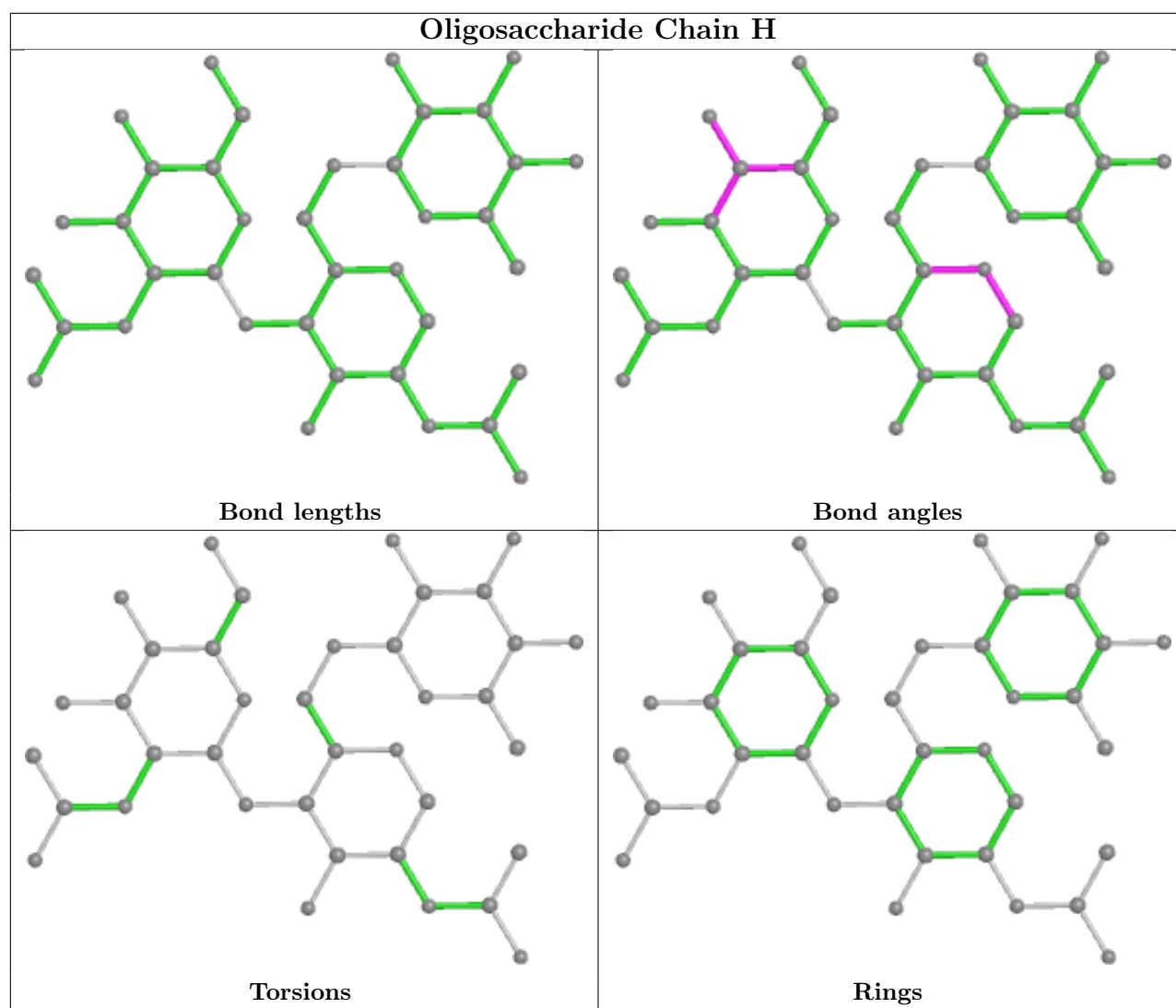
There are no ring outliers.

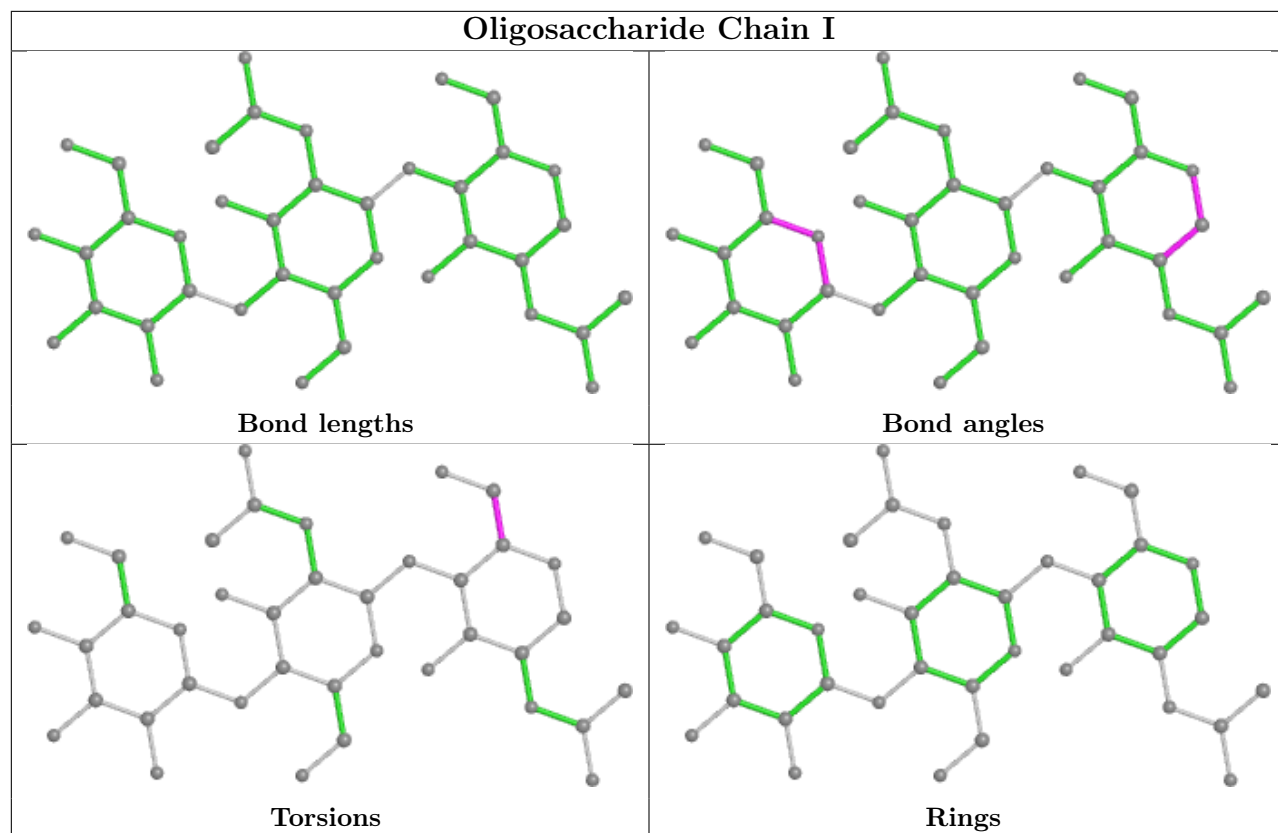
2 monomers are involved in 2 short contacts:

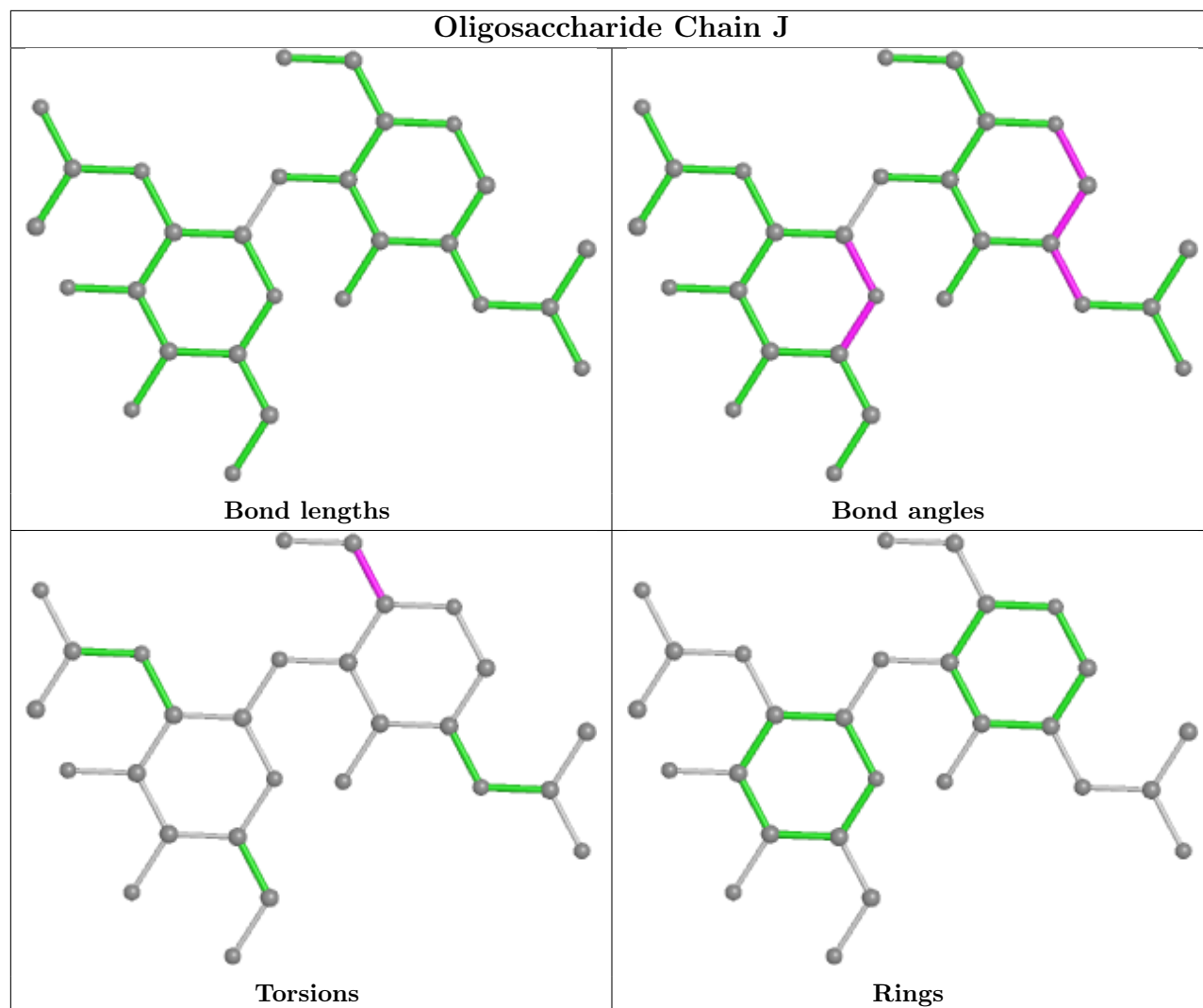
Mol	Chain	Res	Type	Clashes	Symm-Clashes
7	H	3	FUC	1	0
9	J	1	NAG	1	0

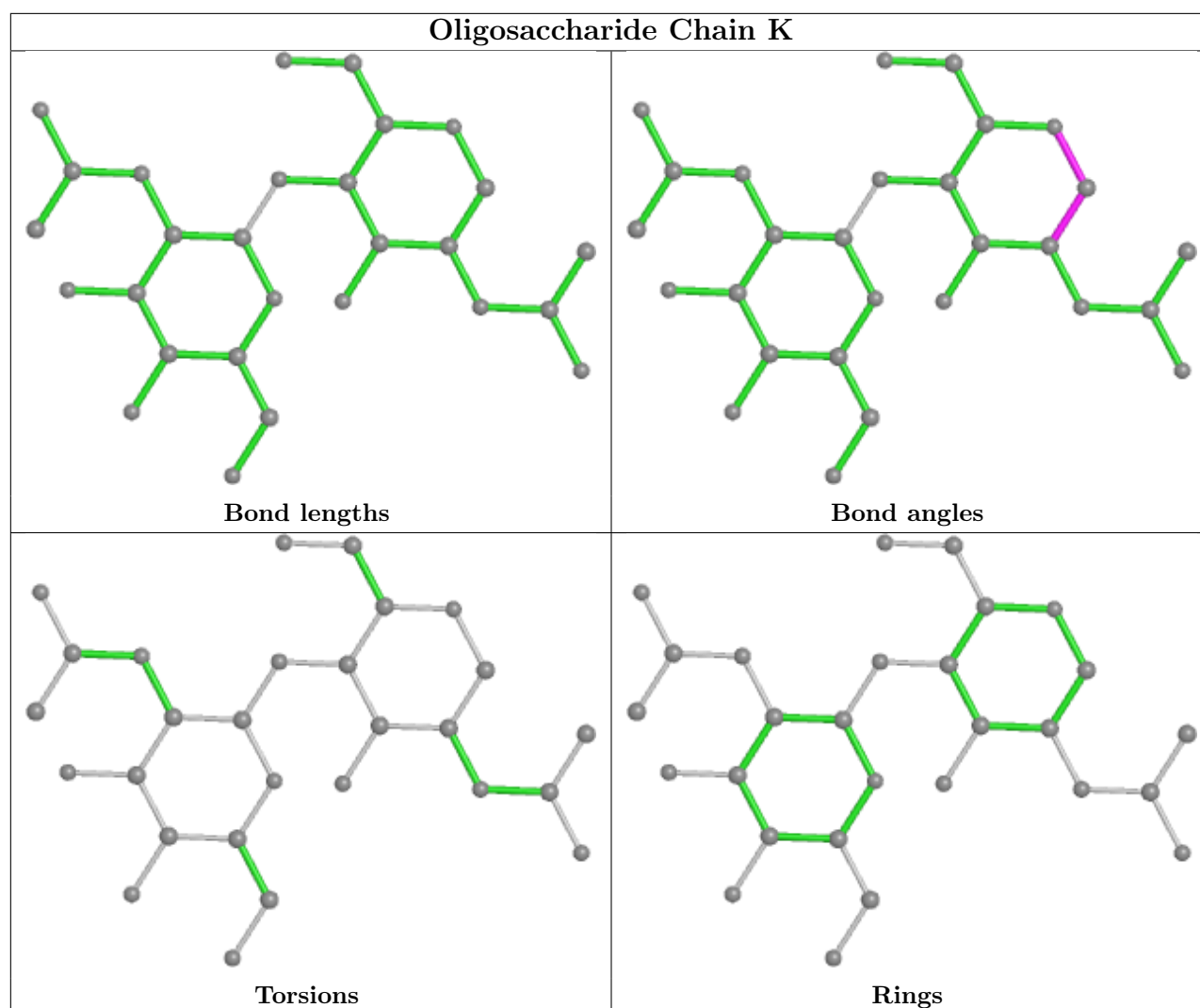
The following is a two-dimensional graphical depiction of Mogul quality analysis of bond lengths, bond angles, torsion angles, and ring geometry for oligosaccharide.











5.6 Ligand geometry [i](#)

1 ligand is modelled in this entry.

In the following table, the Counts columns list the number of bonds (or angles) for which Mogul statistics could be retrieved, the number of bonds (or angles) that are observed in the model and the number of bonds (or angles) that are defined in the Chemical Component Dictionary. The Link column lists molecule types, if any, to which the group is linked. The Z score for a bond length (or angle) is the number of standard deviations the observed value is removed from the expected value. A bond length (or angle) with $|Z| > 2$ is considered an outlier worth inspection. RMSZ is the root-mean-square of all Z scores of the bond lengths (or angles).

Mol	Type	Chain	Res	Link	Bond lengths			Bond angles		
					Counts	RMSZ	$\# Z > 2$	Counts	RMSZ	$\# Z > 2$
10	NAG	C	301	3	14,14,15	0.73	0	17,19,21	0.88	0

In the following table, the Chirals column lists the number of chiral outliers, the number of chiral

centers analysed, the number of these observed in the model and the number defined in the Chemical Component Dictionary. Similar counts are reported in the Torsion and Rings columns. '-' means no outliers of that kind were identified.

Mol	Type	Chain	Res	Link	Chirals	Torsions	Rings
10	NAG	C	301	3	-	0/6/23/26	0/1/1/1

There are no bond length outliers.

There are no bond angle outliers.

There are no chirality outliers.

There are no torsion outliers.

There are no ring outliers.

No monomer is involved in short contacts.

5.7 Other polymers [i](#)

There are no such residues in this entry.

5.8 Polymer linkage issues [i](#)

There are no chain breaks in this entry.

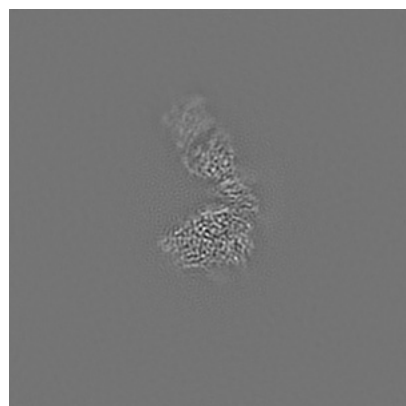
6 Map visualisation [i](#)

This section contains visualisations of the EMDB entry EMD-62427. These allow visual inspection of the internal detail of the map and identification of artifacts.

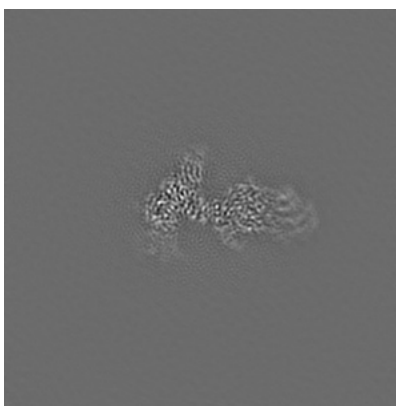
Images derived from a raw map, generated by summing the deposited half-maps, are presented below the corresponding image components of the primary map to allow further visual inspection and comparison with those of the primary map.

6.1 Orthogonal projections [i](#)

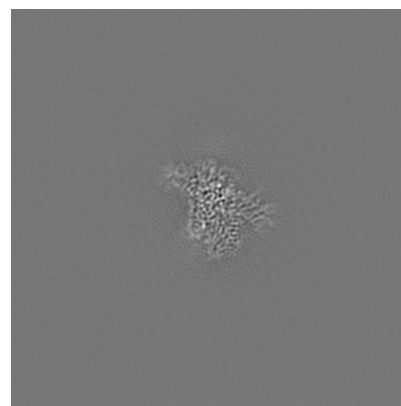
6.1.1 Primary map



X

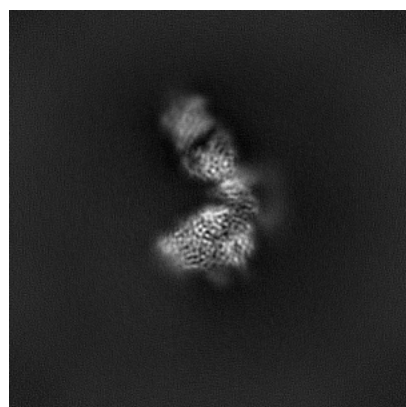


Y

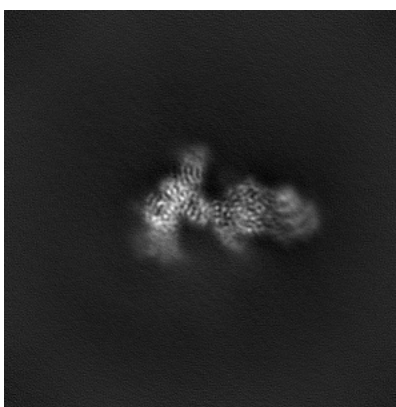


Z

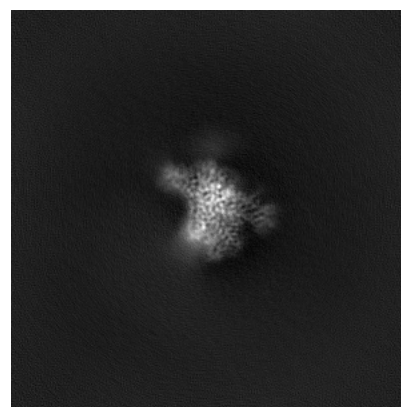
6.1.2 Raw map



X



Y

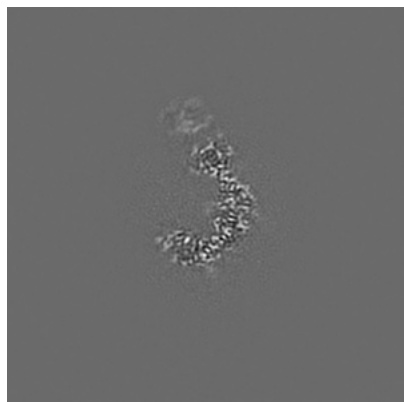


Z

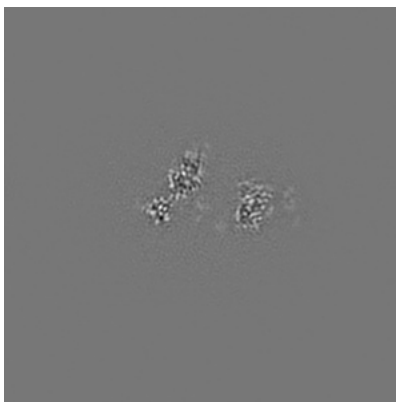
The images above show the map projected in three orthogonal directions.

6.2 Central slices [i](#)

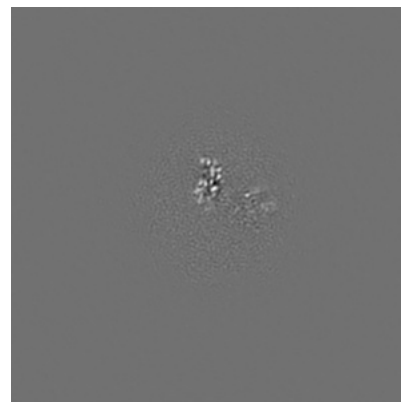
6.2.1 Primary map



X Index: 190

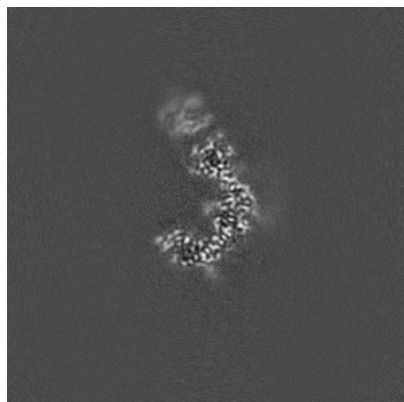


Y Index: 190

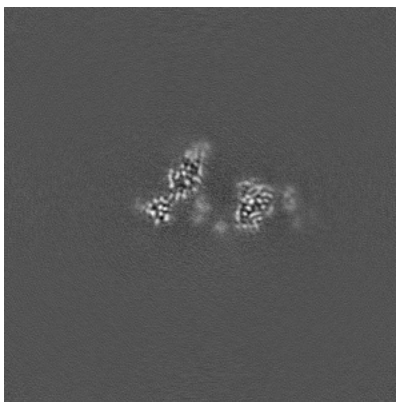


Z Index: 190

6.2.2 Raw map



X Index: 190



Y Index: 190

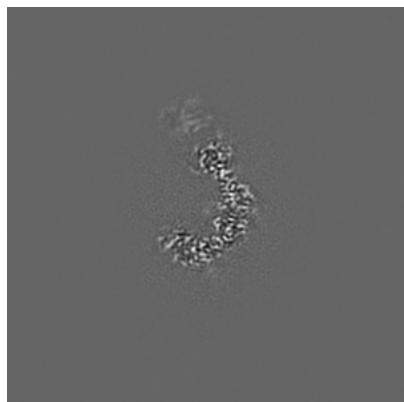


Z Index: 190

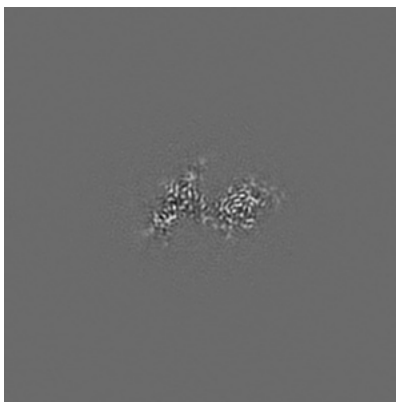
The images above show central slices of the map in three orthogonal directions.

6.3 Largest variance slices [i](#)

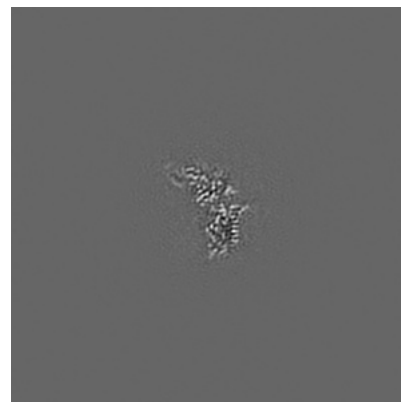
6.3.1 Primary map



X Index: 191

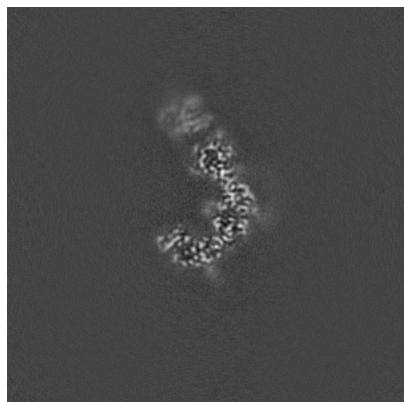


Y Index: 205

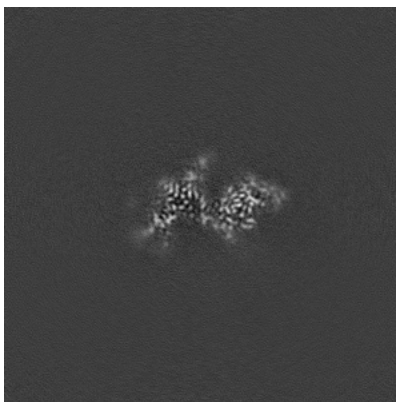


Z Index: 159

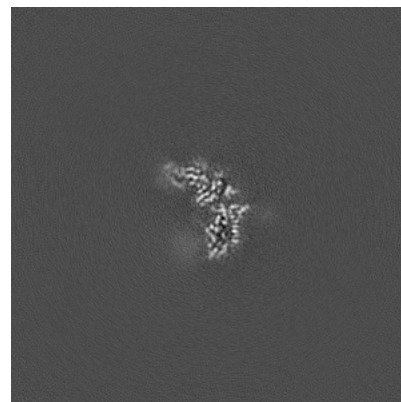
6.3.2 Raw map



X Index: 191



Y Index: 205

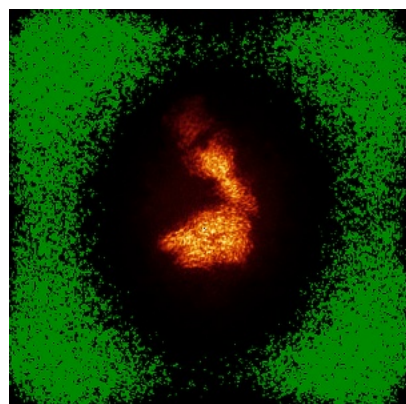


Z Index: 159

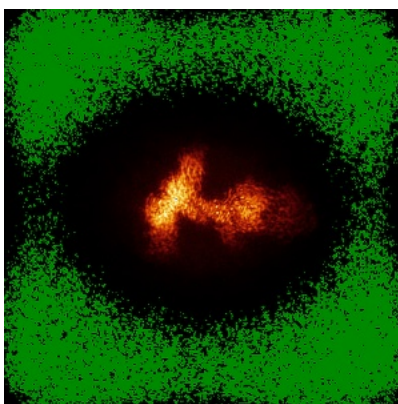
The images above show the largest variance slices of the map in three orthogonal directions.

6.4 Orthogonal standard-deviation projections (False-color) ⓘ

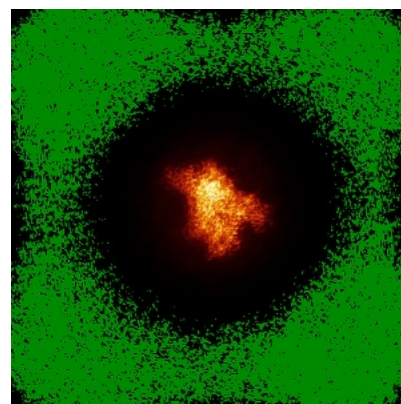
6.4.1 Primary map



X

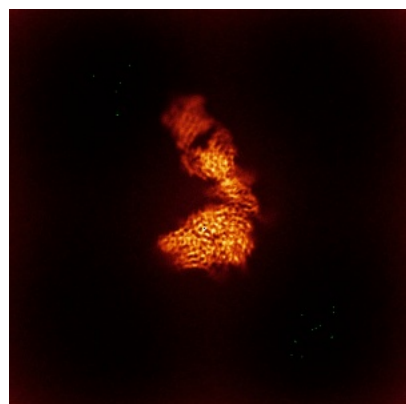


Y

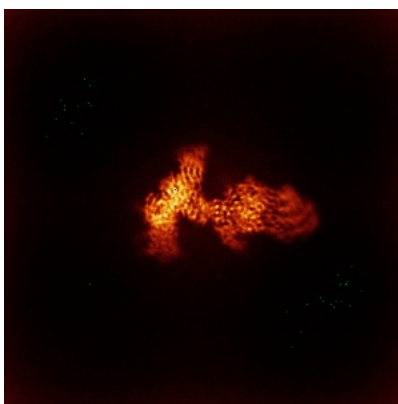


Z

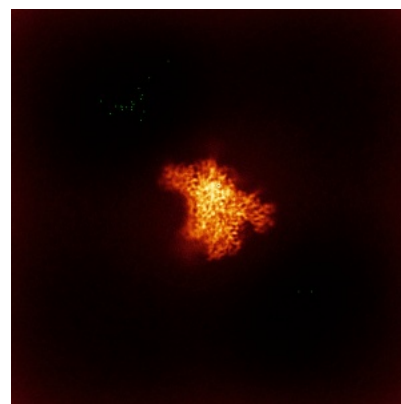
6.4.2 Raw map



X



Y

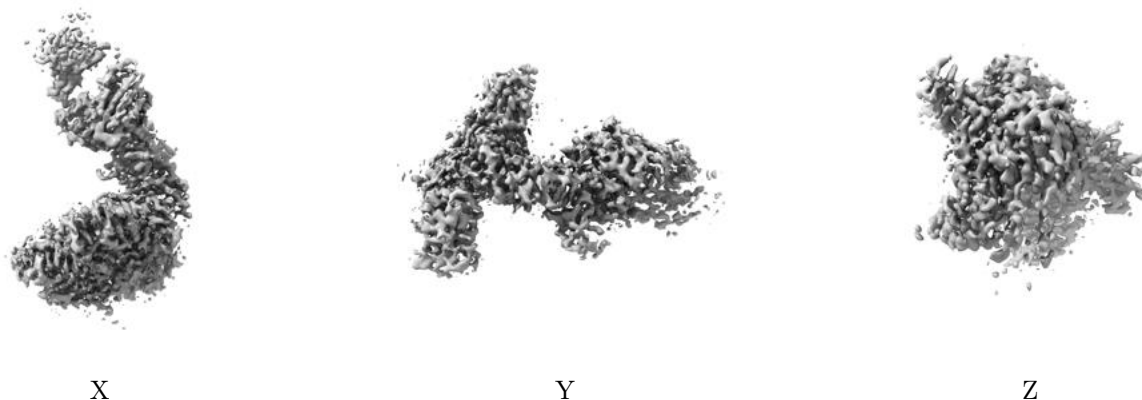


Z

The images above show the map standard deviation projections with false color in three orthogonal directions. Minimum values are shown in green, max in blue, and dark to light orange shades represent small to large values respectively.

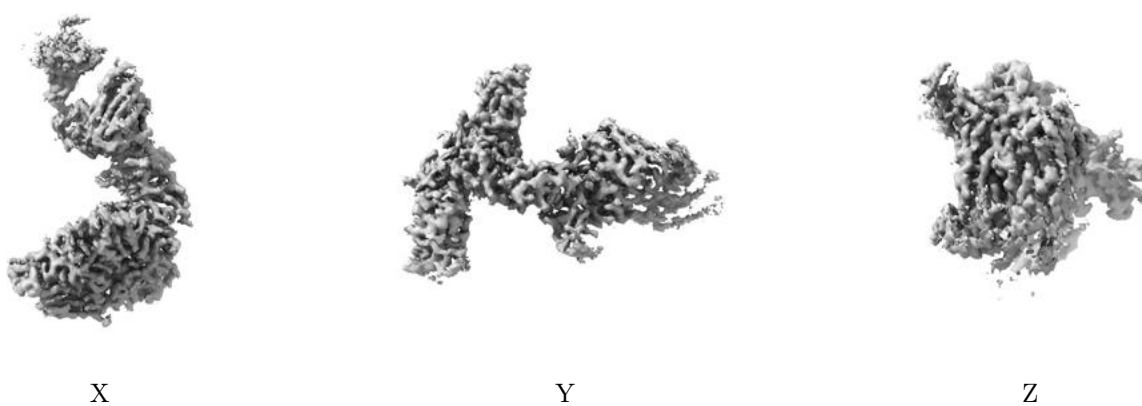
6.5 Orthogonal surface views [i](#)

6.5.1 Primary map



The images above show the 3D surface view of the map at the recommended contour level 0.4. These images, in conjunction with the slice images, may facilitate assessment of whether an appropriate contour level has been provided.

6.5.2 Raw map



These images show the 3D surface of the raw map. The raw map's contour level was selected so that its surface encloses the same volume as the primary map does at its recommended contour level.

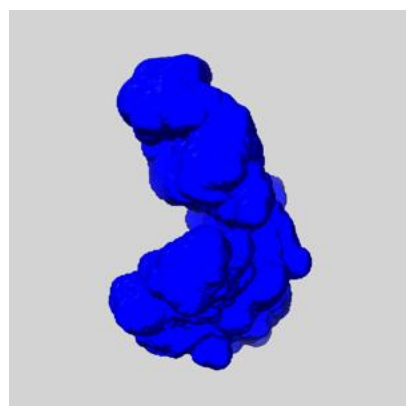
6.6 Mask visualisation [i](#)

This section shows the 3D surface view of the primary map at 50% transparency overlaid with the specified mask at 0% transparency

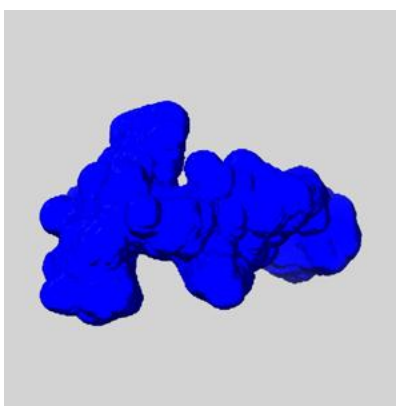
A mask typically either:

- Encompasses the whole structure
- Separates out a domain, a functional unit, a monomer or an area of interest from a larger structure

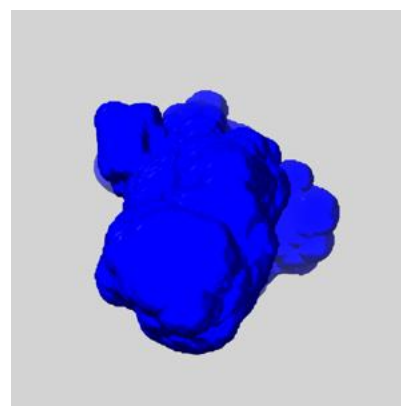
6.6.1 emd_62427_msk_1.map [i](#)



X



Y

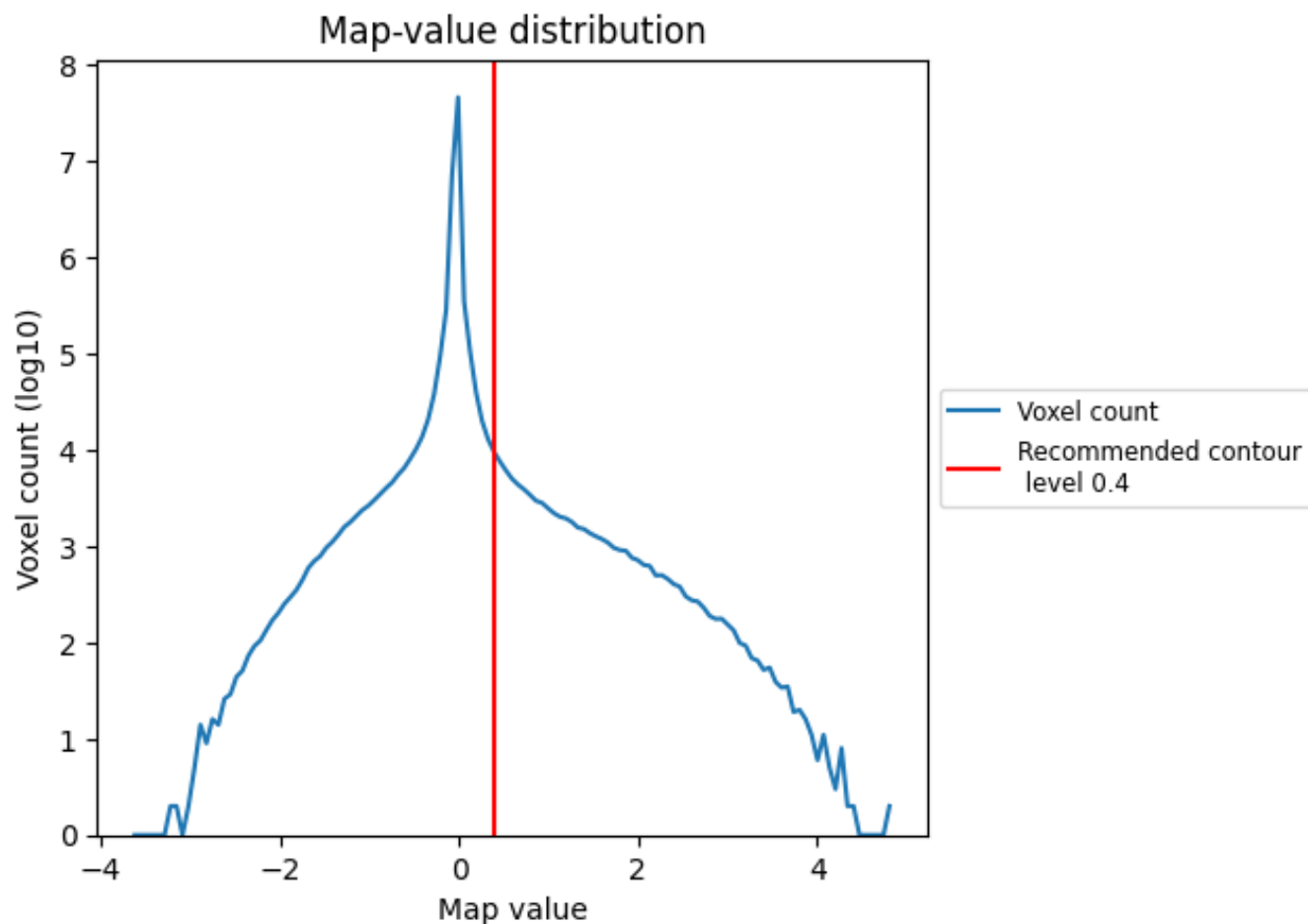


Z

7 Map analysis [i](#)

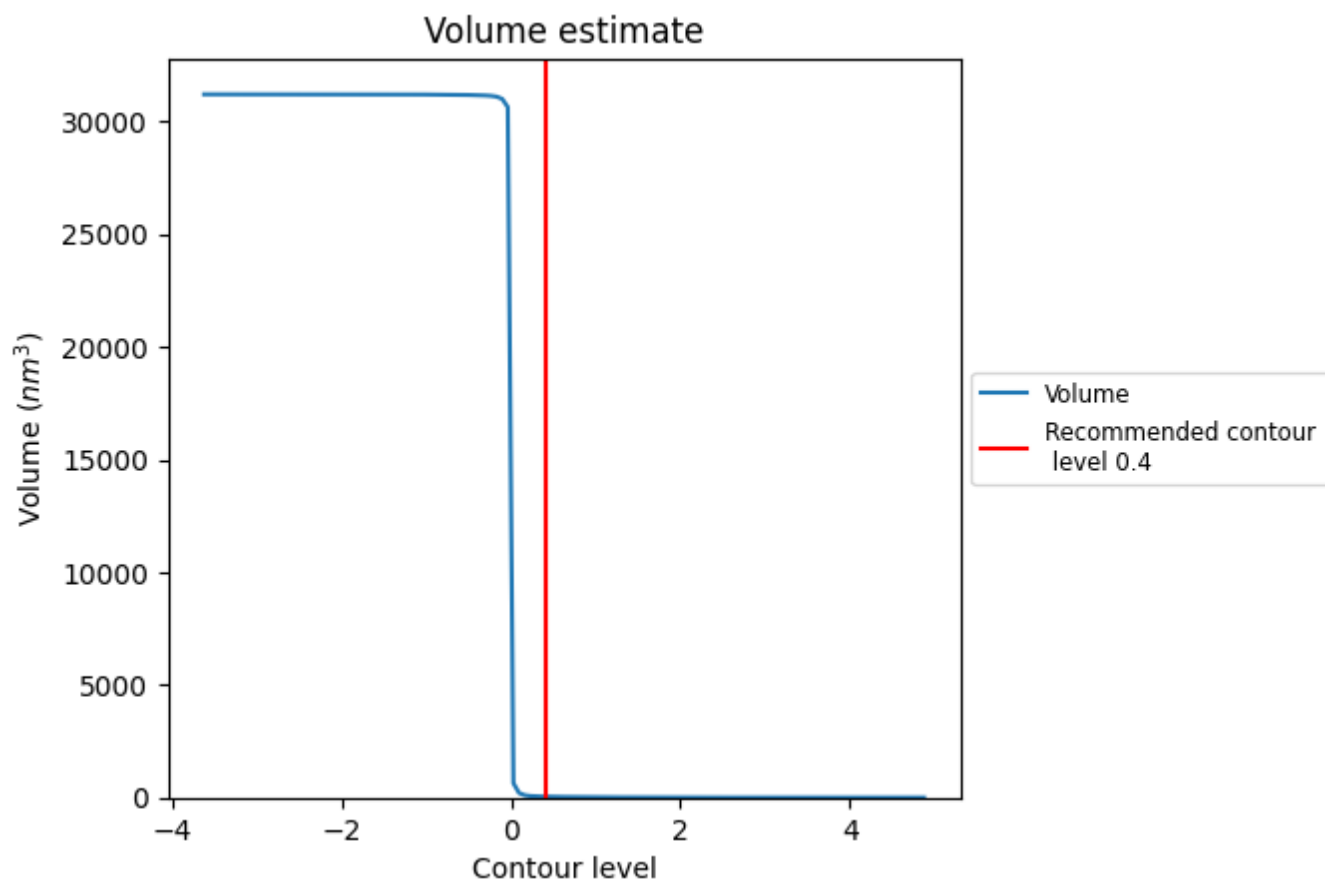
This section contains the results of statistical analysis of the map.

7.1 Map-value distribution [i](#)



The map-value distribution is plotted in 128 intervals along the x-axis. The y-axis is logarithmic. A spike in this graph at zero usually indicates that the volume has been masked.

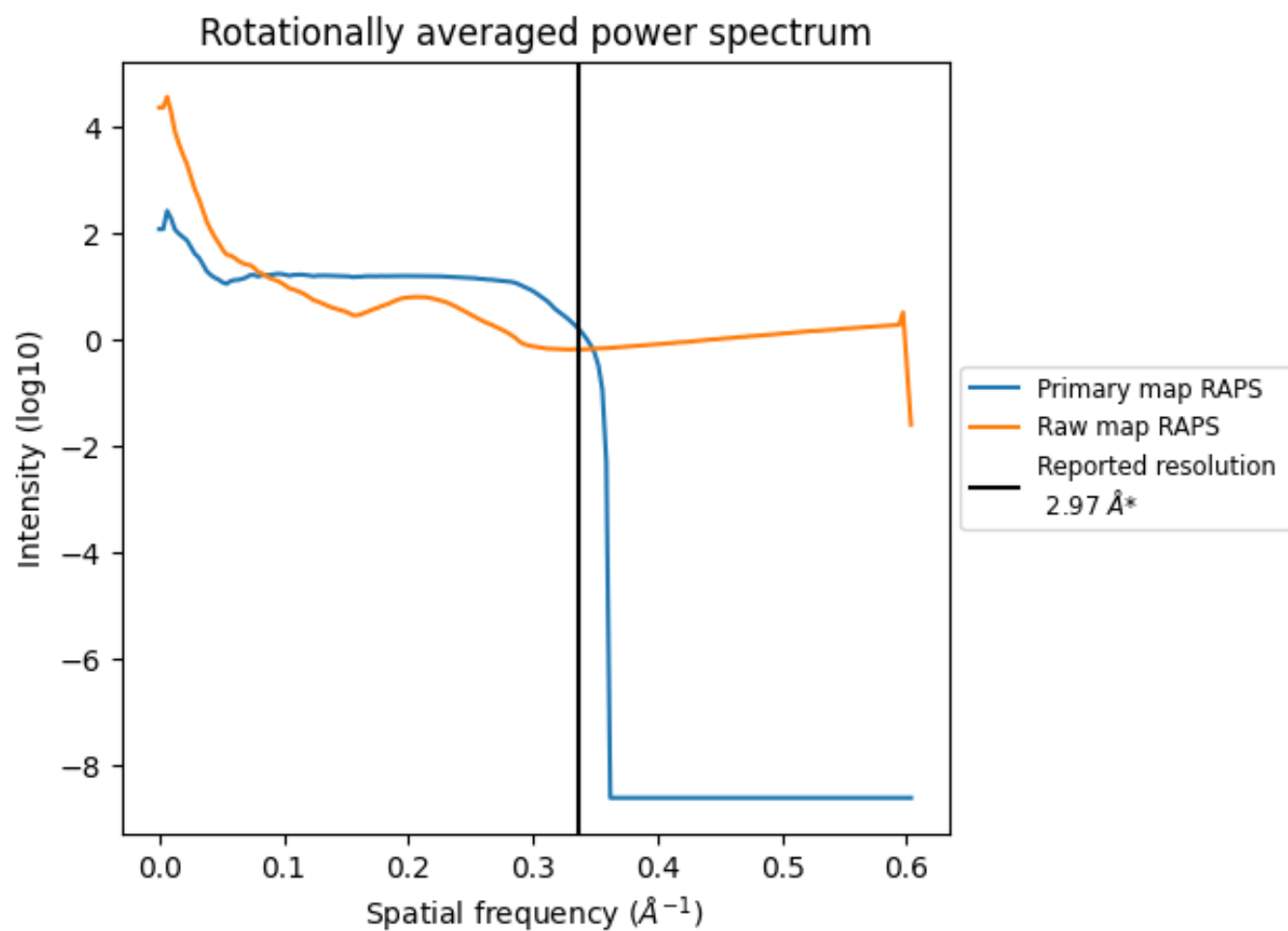
7.2 Volume estimate [i](#)



The volume at the recommended contour level is 42 nm³; this corresponds to an approximate mass of 38 kDa.

The volume estimate graph shows how the enclosed volume varies with the contour level. The recommended contour level is shown as a vertical line and the intersection between the line and the curve gives the volume of the enclosed surface at the given level.

7.3 Rotationally averaged power spectrum ⓘ

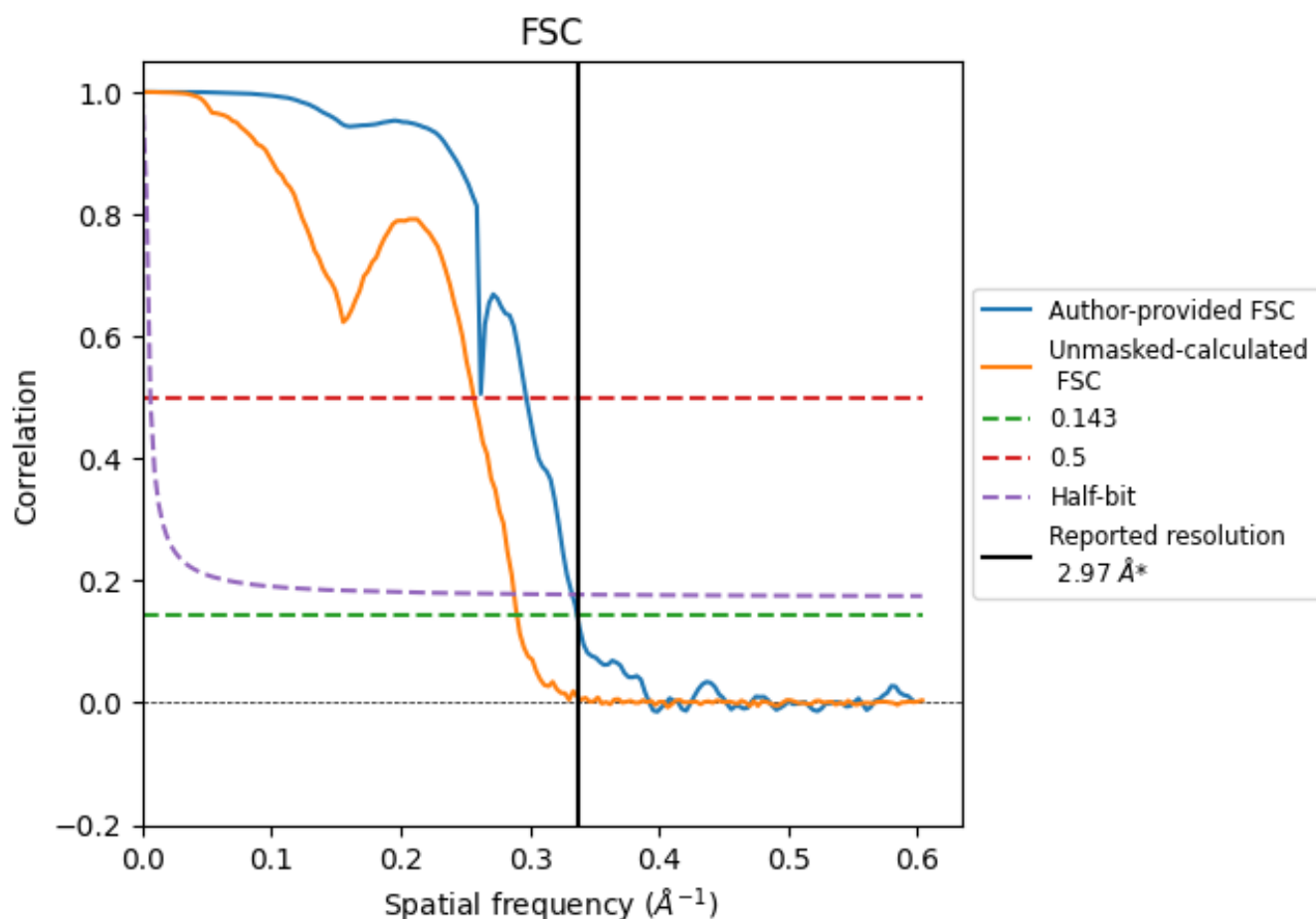


*Reported resolution corresponds to spatial frequency of 0.337 Å⁻¹

8 Fourier-Shell correlation [i](#)

Fourier-Shell Correlation (FSC) is the most commonly used method to estimate the resolution of single-particle and subtomogram-averaged maps. The shape of the curve depends on the imposed symmetry, mask and whether or not the two 3D reconstructions used were processed from a common reference. The reported resolution is shown as a black line. A curve is displayed for the half-bit criterion in addition to lines showing the 0.143 gold standard cut-off and 0.5 cut-off.

8.1 FSC [i](#)



*Reported resolution corresponds to spatial frequency of 0.337 \AA^{-1}

8.2 Resolution estimates [i](#)

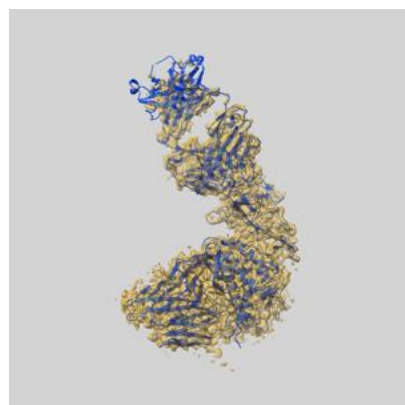
Resolution estimate (Å)	Estimation criterion (FSC cut-off)		
	0.143	0.5	Half-bit
Reported by author	2.97	-	-
Author-provided FSC curve	2.97	3.37	3.01
Unmasked-calculated*	3.45	3.90	3.47

*Resolution estimate based on FSC curve calculated by comparison of deposited half-maps. The value from deposited half-maps intersecting FSC 0.143 CUT-OFF 3.45 differs from the reported value 2.97 by more than 10 %

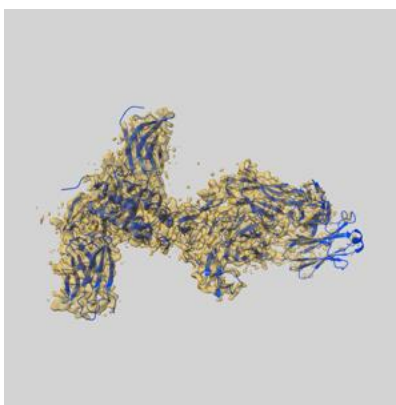
9 Map-model fit [i](#)

This section contains information regarding the fit between EMDB map EMD-62427 and PDB model 9KMC. Per-residue inclusion information can be found in section [3](#) on page [8](#).

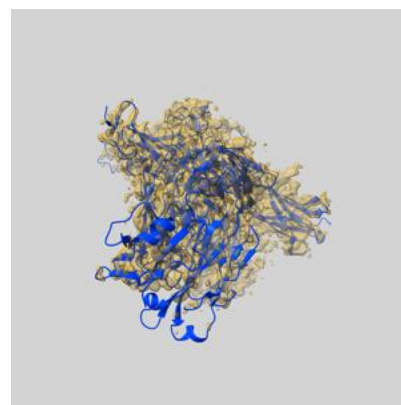
9.1 Map-model overlay [i](#)



X



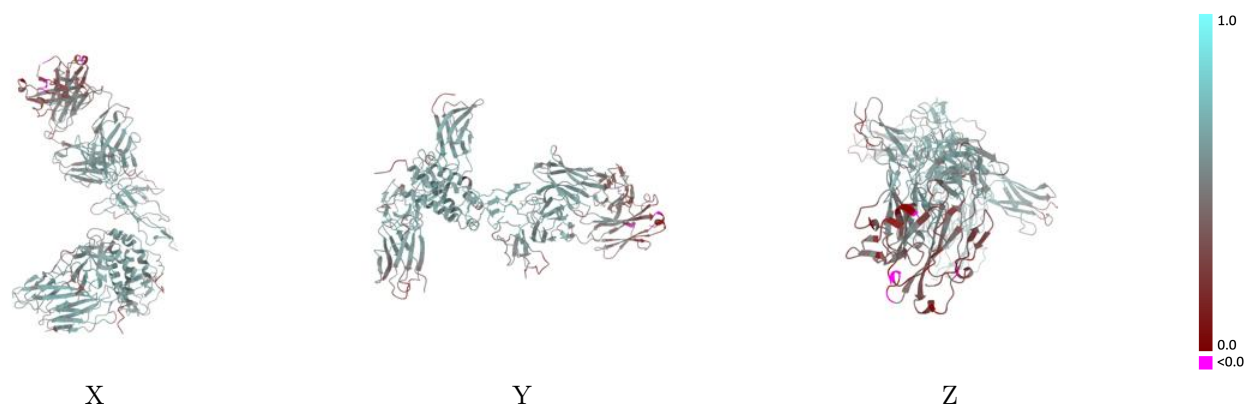
Y



Z

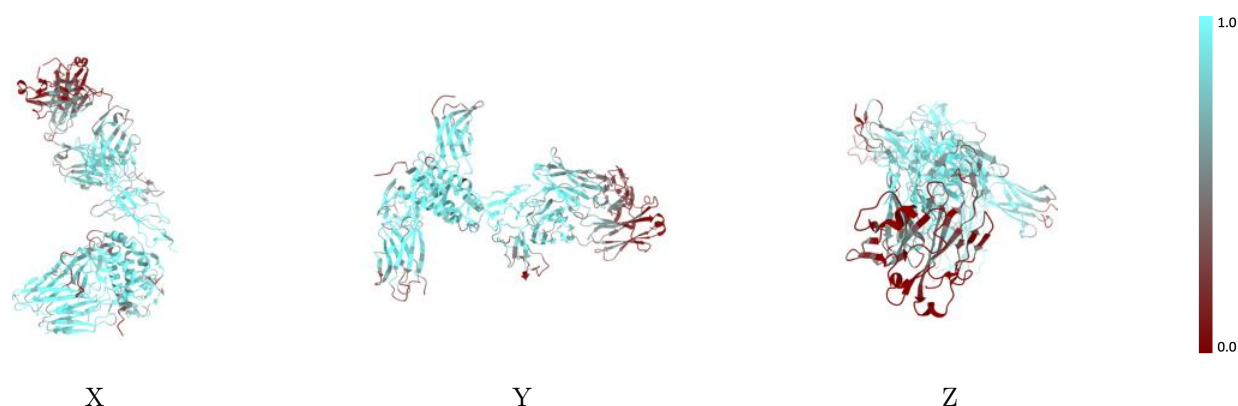
The images above show the 3D surface view of the map at the recommended contour level 0.4 at 50% transparency in yellow overlaid with a ribbon representation of the model coloured in blue. These images allow for the visual assessment of the quality of fit between the atomic model and the map.

9.2 Q-score mapped to coordinate model [i](#)



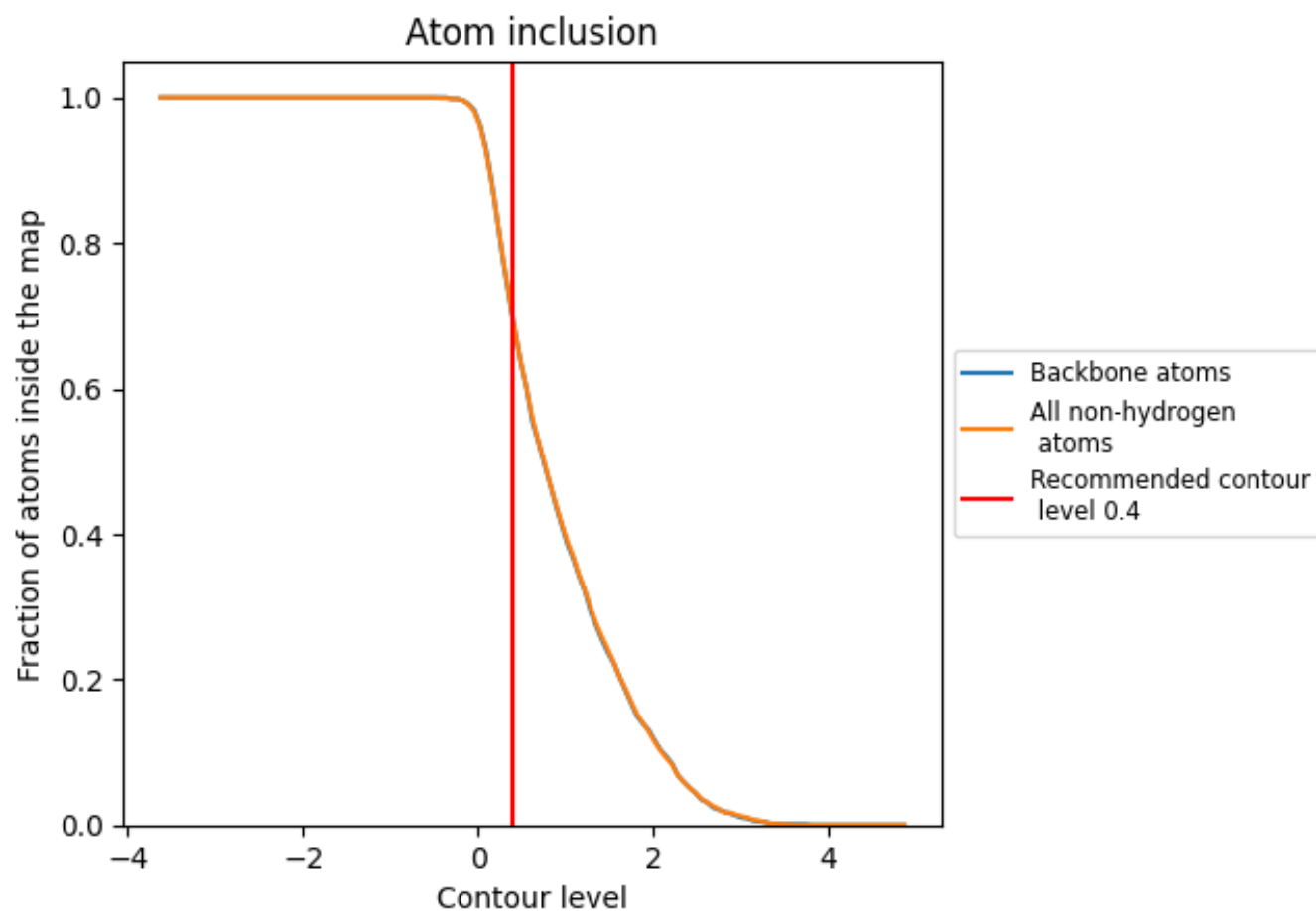
The images above show the model with each residue coloured according to its Q-score. This shows their resolvability in the map with higher Q-score values reflecting better resolvability. Please note: Q-score is calculating the resolvability of atoms, and thus high values are only expected at resolutions at which atoms can be resolved. Low Q-score values may therefore be expected for many entries.

9.3 Atom inclusion mapped to coordinate model [i](#)



The images above show the model with each residue coloured according to its atom inclusion. This shows to what extent they are inside the map at the recommended contour level (0.4).

9.4 Atom inclusion [i](#)



At the recommended contour level, 70% of all backbone atoms, 70% of all non-hydrogen atoms, are inside the map.

9.5 Map-model fit summary ⓘ

The table lists the average atom inclusion at the recommended contour level (0.4) and Q-score for the entire model and for each chain.

Chain	Atom inclusion	Q-score
All	<div></div> 0.6980	<div></div> 0.5160
A	<div></div> 0.7560	<div></div> 0.5360
B	<div></div> 0.8450	<div></div> 0.5700
C	<div></div> 0.7930	<div></div> 0.5450
D	<div></div> 0.7950	<div></div> 0.5560
E	<div></div> 0.5220	<div></div> 0.4580
F	<div></div> 0.5200	<div></div> 0.4520
G	<div></div> 0.7630	<div></div> 0.5000
H	<div></div> 0.6580	<div></div> 0.4730
I	<div></div> 0.7950	<div></div> 0.5290
J	<div></div> 0.6790	<div></div> 0.4470
K	<div></div> 0.4640	<div></div> 0.3820

1.0

0.0

<0.0