



Full wwPDB X-ray Structure Validation Report ⓘ

Nov 3, 2025 – 06:28 PM JST

PDB ID : 9KE8 / pdb_00009ke8
Title : Crystal Structure of HdNadV and its complex with NMN
Authors : Lin, T.; Zhengjuan, W.
Deposited on : 2024-11-04
Resolution : 1.86 Å(reported)

This is a Full wwPDB X-ray Structure Validation Report for a publicly released PDB entry.

We welcome your comments at validation@mail.wwpdb.org

A user guide is available at

<https://www.wwpdb.org/validation/2017/XrayValidationReportHelp>

with specific help available everywhere you see the ⓘ symbol.

The types of validation reports are described at

<http://www.wwpdb.org/validation/2017/FAQs#types>.

The following versions of software and data (see [references ⓘ](#)) were used in the production of this report:

MolProbity : 4-5-2 with Phenix2.0
Mogul : 1.8.5 (274361), CSD as541be (2020)
Xtriage (Phenix) : 2.0
EDS : 3.0
buster-report : 1.1.7 (2018)
Percentile statistics : 20231227.v01 (using entries in the PDB archive December 27th 2023)
CCP4 : 9.0.010 (Gargrove)
Density-Fitness : 1.0.12
Ideal geometry (proteins) : Engh & Huber (2001)
Ideal geometry (DNA, RNA) : Parkinson et al. (1996)
Validation Pipeline (wwPDB-VP) : 2.46

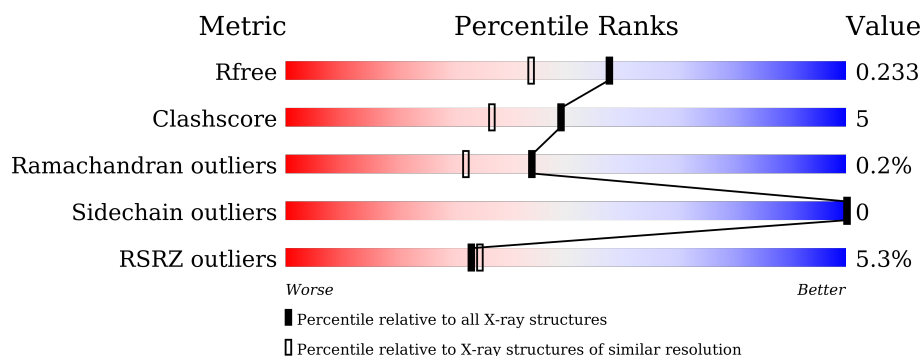
1 Overall quality at a glance

The following experimental techniques were used to determine the structure:

X-RAY DIFFRACTION

The reported resolution of this entry is 1.86 Å.

Percentile scores (ranging between 0-100) for global validation metrics of the entry are shown in the following graphic. The table shows the number of entries on which the scores are based.



Metric	Whole archive (#Entries)	Similar resolution (#Entries, resolution range(Å))
R_{free}	164625	3097 (1.86-1.86)
Clashscore	180529	3359 (1.86-1.86)
Ramachandran outliers	177936	3335 (1.86-1.86)
Sidechain outliers	177891	3335 (1.86-1.86)
RSRZ outliers	164620	3097 (1.86-1.86)

The table below summarises the geometric issues observed across the polymeric chains and their fit to the electron density. The red, orange, yellow and green segments of the lower bar indicate the fraction of residues that contain outliers for ≥ 3 , 2, 1 and 0 types of geometric quality criteria respectively. A grey segment represents the fraction of residues that are not modelled. The numeric value for each fraction is indicated below the corresponding segment, with a dot representing fractions $\leq 5\%$. The upper red bar (where present) indicates the fraction of residues that have poor fit to the electron density. The numeric value is given above the bar.

Mol	Chain	Length	Quality of chain
1	A	495	<div> <div>3%</div> <div>85%</div> <div>11%</div> <div>..</div> </div>
1	B	495	<div> <div>7%</div> <div>84%</div> <div>11%</div> <div>..</div> </div>

2 Entry composition [i](#)

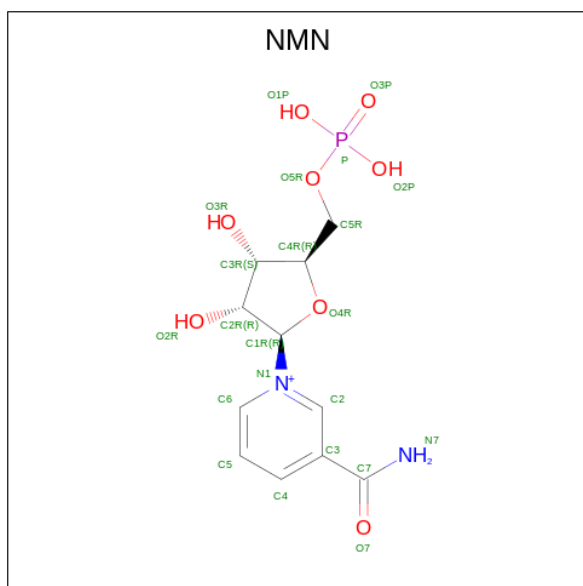
There are 3 unique types of molecules in this entry. The entry contains 7832 atoms, of which 0 are hydrogens and 0 are deuteriums.

In the tables below, the ZeroOcc column contains the number of atoms modelled with zero occupancy, the AltConf column contains the number of residues with at least one atom in alternate conformation and the Trace column contains the number of residues modelled with at most 2 atoms.

- Molecule 1 is a protein called Nicotinamide phosphoribosyltransferase.

Mol	Chain	Residues	Atoms					ZeroOcc	AltConf	Trace
1	A	478	Total	C	N	O	S	0	0	0
			3787	2422	626	725	14			
1	B	480	Total	C	N	O	S	0	0	0
			3803	2431	631	727	14			

- Molecule 2 is BETA-NICOTINAMIDE RIBOSE MONOPHOSPHATE (CCD ID: NMN) (formula: $C_{11}H_{16}N_2O_8P$) (labeled as "Ligand of Interest" by depositor).



Mol	Chain	Residues	Atoms					ZeroOcc	AltConf
2	A	1	Total	C	N	O	P	0	0
			22	11	2	8	1		
2	B	1	Total	C	N	O	P	0	0
			22	11	2	8	1		

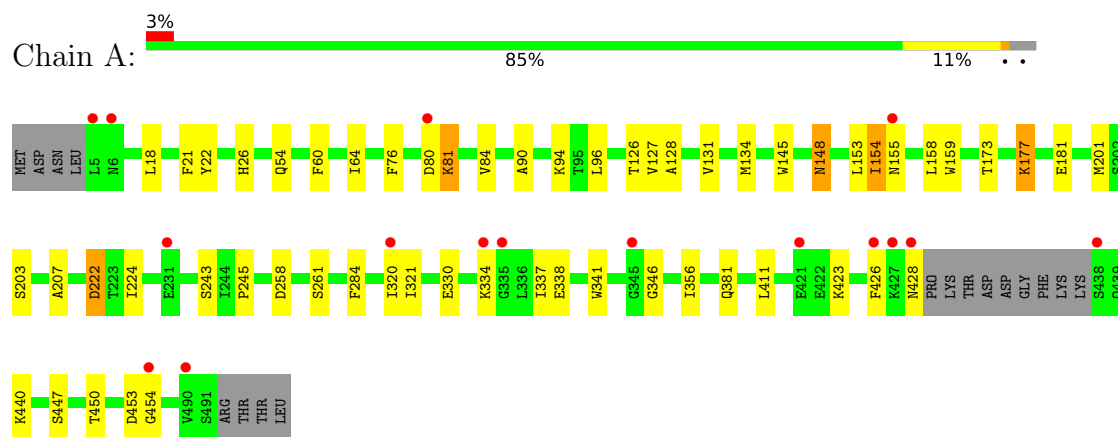
- Molecule 3 is water.

Mol	Chain	Residues	Atoms		ZeroOcc	AltConf
3	A	111	Total 111	O 111	0	0
3	B	87	Total 87	O 87	0	0

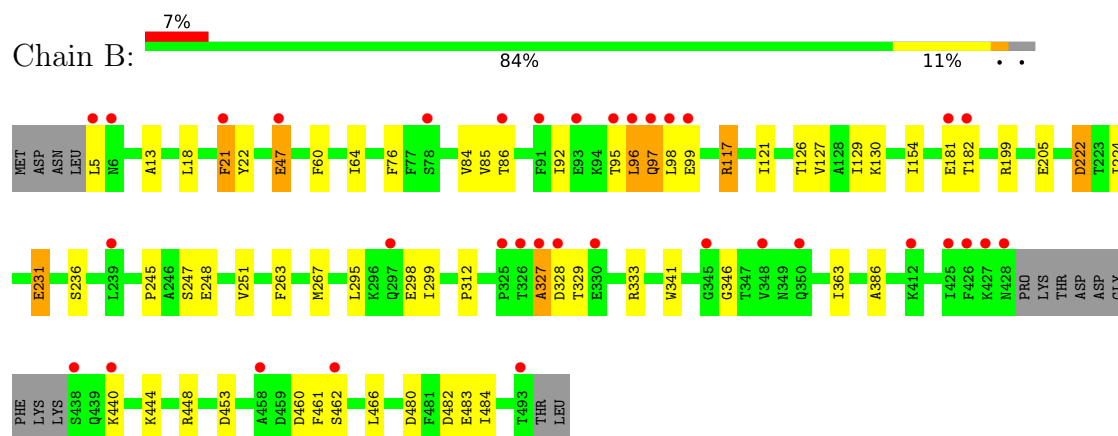
3 Residue-property plots

These plots are drawn for all protein, RNA, DNA and oligosaccharide chains in the entry. The first graphic for a chain summarises the proportions of the various outlier classes displayed in the second graphic. The second graphic shows the sequence view annotated by issues in geometry and electron density. Residues are color-coded according to the number of geometric quality criteria for which they contain at least one outlier: green = 0, yellow = 1, orange = 2 and red = 3 or more. A red dot above a residue indicates a poor fit to the electron density ($RSRZ > 2$). Stretches of 2 or more consecutive residues without any outlier are shown as a green connector. Residues present in the sample, but not in the model, are shown in grey.

- Molecule 1: Nicotinamide phosphoribosyltransferase



- Molecule 1: Nicotinamide phosphoribosyltransferase



4 Data and refinement statistics

Property	Value	Source
Space group	P 65	Depositor
Cell constants a, b, c, α , β , γ	158.52Å 158.52Å 130.40Å 90.00° 90.00° 120.00°	Depositor
Resolution (Å)	38.08 – 1.86 38.08 – 1.86	Depositor EDS
% Data completeness (in resolution range)	100.0 (38.08-1.86) 100.0 (38.08-1.86)	Depositor EDS
R_{merge}	(Not available)	Depositor
R_{sym}	(Not available)	Depositor
$\langle I/\sigma(I) \rangle$ ¹	1.36 (at 1.86Å)	Xtriage
Refinement program	PHENIX (1.18.2_3874: ???)	Depositor
R, R_{free}	0.209 , 0.235 0.208 , 0.233	Depositor DCC
R_{free} test set	7959 reflections (5.12%)	wwPDB-VP
Wilson B-factor (Å ²)	28.9	Xtriage
Anisotropy	0.377	Xtriage
Bulk solvent k_{sol} (e/Å ³), B_{sol} (Å ²)	0.37 , 32.4	EDS
L-test for twinning ²	$\langle L \rangle = 0.48$, $\langle L^2 \rangle = 0.31$	Xtriage
Estimated twinning fraction	0.038 for h,-h-k,-l	Xtriage
F_o, F_c correlation	0.96	EDS
Total number of atoms	7832	wwPDB-VP
Average B, all atoms (Å ²)	35.0	wwPDB-VP

Xtriage's analysis on translational NCS is as follows: *The largest off-origin peak in the Patterson function is 3.29% of the height of the origin peak. No significant pseudotranslation is detected.*

¹Intensities estimated from amplitudes.

²Theoretical values of $\langle |L| \rangle$, $\langle L^2 \rangle$ for acentric reflections are 0.5, 0.333 respectively for untwinned datasets, and 0.375, 0.2 for perfectly twinned datasets.

5 Model quality

5.1 Standard geometry

Bond lengths and bond angles in the following residue types are not validated in this section: NMN

The Z score for a bond length (or angle) is the number of standard deviations the observed value is removed from the expected value. A bond length (or angle) with $|Z| > 5$ is considered an outlier worth inspection. RMSZ is the root-mean-square of all Z scores of the bond lengths (or angles).

Mol	Chain	Bond lengths		Bond angles	
		RMSZ	$\# Z > 5$	RMSZ	$\# Z > 5$
1	A	0.45	1/3875 (0.0%)	0.76	8/5253 (0.2%)
1	B	0.50	2/3891 (0.1%)	0.86	20/5274 (0.4%)
All	All	0.48	3/7766 (0.0%)	0.81	28/10527 (0.3%)

Chiral center outliers are detected by calculating the chiral volume of a chiral center and verifying if the center is modelled as a planar moiety or with the opposite hand. A planarity outlier is detected by checking planarity of atoms in a peptide group, atoms in a mainchain group or atoms of a sidechain that are expected to be planar.

Mol	Chain	#Chirality outliers	#Planarity outliers
1	A	0	3
1	B	0	5
All	All	0	8

All (3) bond length outliers are listed below:

Mol	Chain	Res	Type	Atoms	Z	Observed(Å)	Ideal(Å)
1	A	177	LYS	CA-CB	-6.42	1.43	1.53
1	B	21	PHE	CB-CG	-6.08	1.36	1.50
1	B	484	ILE	C-O	-5.02	1.18	1.24

All (28) bond angle outliers are listed below:

Mol	Chain	Res	Type	Atoms	Z	Observed(°)	Ideal(°)
1	B	47	GLU	N-CA-CB	8.38	123.12	110.22
1	B	47	GLU	CG-CD-OE2	-8.32	99.26	118.40
1	B	154	ILE	CA-C-N	-8.18	107.27	121.66
1	B	154	ILE	C-N-CA	-8.18	107.27	121.66
1	A	411	LEU	CB-CG-CD2	-7.95	86.84	110.70
1	B	47	GLU	CG-CD-OE1	7.64	135.97	118.40

Continued on next page...

Continued from previous page...

Mol	Chain	Res	Type	Atoms	Z	Observed(°)	Ideal(°)
1	B	231	GLU	CG-CD-OE2	-7.56	101.01	118.40
1	A	154	ILE	CA-C-N	-7.54	108.38	121.66
1	A	154	ILE	C-N-CA	-7.54	108.38	121.66
1	A	453	ASP	CA-C-N	-7.38	106.94	121.41
1	A	453	ASP	C-N-CA	-7.38	106.94	121.41
1	B	117	ARG	CD-NE-CZ	6.81	133.93	124.40
1	B	117	ARG	NE-CZ-NH1	-6.67	114.83	121.50
1	B	97	GLN	CB-CA-C	6.14	120.86	112.09
1	B	181	GLU	CA-C-N	-6.02	112.78	122.23
1	B	181	GLU	C-N-CA	-6.02	112.78	122.23
1	A	177	LYS	CG-CD-CE	-5.78	98.00	111.30
1	B	231	GLU	CG-CD-OE1	5.54	131.15	118.40
1	B	327	ALA	CA-C-N	5.47	131.99	121.54
1	B	327	ALA	C-N-CA	5.47	131.99	121.54
1	A	148	ASN	CB-CA-C	-5.46	102.23	110.92
1	B	96	LEU	N-CA-C	-5.43	99.24	110.80
1	B	96	LEU	CA-C-N	-5.32	115.04	123.24
1	B	96	LEU	C-N-CA	-5.32	115.04	123.24
1	A	411	LEU	CD1-CG-CD2	-5.15	99.48	110.80
1	B	47	GLU	CB-CG-CD	-5.08	103.97	112.60
1	B	47	GLU	CB-CA-C	-5.06	101.27	110.63
1	B	224	ILE	N-CA-CB	5.00	113.65	110.50

There are no chirality outliers.

All (8) planarity outliers are listed below:

Mol	Chain	Res	Type	Group
1	A	22	TYR	Sidechain
1	A	222	ASP	Sidechain
1	A	454	GLY	Peptide
1	B	117	ARG	Sidechain
1	B	22	TYR	Sidechain
1	B	222	ASP	Sidechain
1	B	231	GLU	Sidechain
1	B	47	GLU	Sidechain

5.2 Too-close contacts

In the following table, the Non-H and H(model) columns list the number of non-hydrogen atoms and hydrogen atoms in the chain respectively. The H(added) column lists the number of hydrogen atoms added and optimized by MolProbity. The Clashes column lists the number of clashes within

the asymmetric unit, whereas Symm-Clashes lists symmetry-related clashes.

Mol	Chain	Non-H	H(model)	H(added)	Clashes	Symm-Clashes
1	A	3787	0	3703	41	0
1	B	3803	0	3722	48	0
2	A	22	0	13	0	0
2	B	22	0	13	1	0
3	A	111	0	0	0	0
3	B	87	0	0	1	0
All	All	7832	0	7451	80	0

The all-atom clashscore is defined as the number of clashes found per 1000 atoms (including hydrogen atoms). The all-atom clashscore for this structure is 5.

All (80) close contacts within the same asymmetric unit are listed below, sorted by their clash magnitude.

Atom-1	Atom-2	Interatomic distance (Å)	Clash overlap (Å)
1:A:54:GLN:HG3	1:A:126:THR:HG21	1.51	0.90
1:B:327:ALA:HB1	1:B:333:ARG:HH11	1.35	0.89
1:A:54:GLN:HG3	1:A:126:THR:CG2	2.11	0.79
1:A:127:VAL:CG1	1:A:131:VAL:HB	2.19	0.72
1:B:96:LEU:HD12	1:B:97:GLN:H	1.55	0.70
1:B:5:LEU:N	3:B:601:HOH:O	2.23	0.69
1:A:222:ASP:OD1	1:B:21:PHE:HB3	1.95	0.66
1:B:98:LEU:HD13	1:B:99:GLU:N	2.11	0.65
1:A:173:THR:O	1:A:177:LYS:HG2	1.97	0.65
1:A:54:GLN:CG	1:A:126:THR:HG21	2.23	0.64
1:A:258:ASP:OD2	1:A:261:SER:OG	2.16	0.63
1:A:426:PHE:HE1	1:A:428:ASN:HD22	1.47	0.62
1:B:460:ASP:OD1	1:B:462:SER:HB2	2.00	0.62
1:B:95:THR:O	1:B:96:LEU:HB3	2.00	0.61
1:B:341:TRP:CZ3	1:B:346:GLY:HA3	2.36	0.61
1:A:21:PHE:H	1:B:222:ASP:HB3	1.66	0.61
1:B:126:THR:O	1:B:448:ARG:HD2	2.01	0.61
1:B:327:ALA:HB1	1:B:333:ARG:NH1	2.14	0.60
1:B:327:ALA:HB2	1:B:333:ARG:HD3	1.81	0.60
1:B:85:VAL:O	1:B:86:THR:HB	2.03	0.58
1:B:295:LEU:O	1:B:298:GLU:HB2	2.03	0.57
1:B:295:LEU:O	1:B:299:ILE:HG12	2.04	0.57
1:A:447:SER:OG	1:A:450:THR:HG22	2.04	0.57
1:B:182:THR:HB	1:B:386:ALA:HA	1.87	0.57
1:B:95:THR:C	1:B:96:LEU:O	2.46	0.55
1:B:60:PHE:O	1:B:64:ILE:HG12	2.06	0.55

Continued on next page...

Continued from previous page...

Atom-1	Atom-2	Interatomic distance (Å)	Clash overlap (Å)
1:A:90:ALA:O	1:A:94:LYS:HG3	2.07	0.54
1:B:480:ASP:OD1	1:B:483:GLU:HG3	2.09	0.53
1:A:334:LYS:HB2	1:A:338:GLU:HB3	1.91	0.51
1:A:181:GLU:HG2	1:A:381:GLN:OE1	2.10	0.51
1:B:327:ALA:CB	1:B:333:ARG:HH11	2.17	0.50
1:A:330:GLU:O	1:A:334:LYS:HG2	2.12	0.50
1:B:236:SER:HB2	1:B:482:ASP:OD1	2.12	0.49
1:A:320:ILE:HG23	1:A:321:ILE:HG12	1.95	0.49
1:B:96:LEU:HD12	1:B:97:GLN:N	2.24	0.49
1:A:18:LEU:CD2	1:A:153:LEU:HD13	2.44	0.47
1:A:76:PHE:CE2	1:A:84:VAL:HG11	2.50	0.47
1:B:295:LEU:HD23	1:B:298:GLU:OE1	2.15	0.47
1:A:26:HIS:HB2	1:A:148:ASN:ND2	2.30	0.47
1:B:121:ILE:HG13	1:B:466:LEU:HD23	1.97	0.47
1:B:329:THR:O	1:B:333:ARG:HG3	2.16	0.46
1:A:26:HIS:HB2	1:A:148:ASN:HD21	1.81	0.46
1:A:423:LYS:HB3	1:A:423:LYS:HE3	1.45	0.45
1:A:341:TRP:CZ3	1:A:346:GLY:HA3	2.51	0.45
1:A:127:VAL:HG13	1:A:131:VAL:HB	1.98	0.45
1:A:201:MET:HG3	1:A:207:ALA:HA	1.99	0.45
1:A:80:ASP:O	1:A:81:LYS:CB	2.64	0.44
1:B:248:GLU:O	1:B:251:VAL:HG22	2.18	0.44
1:A:222:ASP:HA	1:B:21:PHE:HB2	1.99	0.44
1:B:440:LYS:HG2	1:B:453:ASP:OD2	2.18	0.44
1:B:444:LYS:HD2	1:B:461:PHE:HA	1.99	0.44
1:A:155:ASN:OD1	1:B:199:ARG:HB2	2.17	0.43
1:A:134:MET:HE1	1:A:154:ILE:HG21	2.00	0.43
1:B:76:PHE:CE2	1:B:84:VAL:HG11	2.53	0.43
1:B:247:SER:HB2	1:B:251:VAL:CG2	2.49	0.43
1:A:60:PHE:O	1:A:64:ILE:HG12	2.19	0.43
1:B:84:VAL:C	1:B:85:VAL:O	2.58	0.42
1:B:13:ALA:HB1	1:B:18:LEU:HD21	2.01	0.42
1:A:245:PRO:HD3	1:B:96:LEU:HD13	2.01	0.42
1:A:96:LEU:HD22	1:B:245:PRO:HD3	2.01	0.42
1:A:126:THR:HG22	1:A:127:VAL:N	2.35	0.42
1:B:121:ILE:CD1	1:B:127:VAL:HG11	2.49	0.42
1:B:222:ASP:OD2	2:B:501:NMN:HC4	2.19	0.42
1:A:145:TRP:O	1:A:148:ASN:HB3	2.20	0.42
1:B:267:MET:CE	1:B:299:ILE:HD13	2.50	0.42
1:B:76:PHE:CD2	1:B:84:VAL:HG11	2.55	0.41
1:A:243:SER:HB3	1:B:21:PHE:CD1	2.55	0.41

Continued on next page...

Continued from previous page...

Atom-1	Atom-2	Interatomic distance (Å)	Clash overlap (Å)
1:B:129:ILE:HG22	1:B:130:LYS:HG3	2.01	0.41
1:B:312:PRO:HD2	1:B:363:ILE:O	2.21	0.41
1:A:154:ILE:HG23	1:A:158:LEU:HD12	2.02	0.41
1:A:426:PHE:CD2	1:A:440:LYS:HE2	2.55	0.41
1:A:155:ASN:O	1:A:159:TRP:HD1	2.04	0.41
1:B:92:ILE:O	1:B:95:THR:O	2.38	0.41
1:B:267:MET:HE1	1:B:299:ILE:HD13	2.02	0.41
1:A:127:VAL:HG12	1:A:128:ALA:O	2.20	0.40
1:A:224:ILE:HD11	1:B:21:PHE:HA	2.03	0.40
1:A:284:PHE:CE1	1:A:320:ILE:HD11	2.56	0.40
1:B:263:PHE:O	1:B:267:MET:HG3	2.21	0.40
1:A:203:SER:HB2	1:B:205:GLU:HG2	2.02	0.40
1:A:337:ILE:HG23	1:A:356:ILE:HD11	2.03	0.40

There are no symmetry-related clashes.

5.3 Torsion angles ⓘ

5.3.1 Protein backbone ⓘ

In the following table, the Percentiles column shows the percent Ramachandran outliers of the chain as a percentile score with respect to all X-ray entries followed by that with respect to entries of similar resolution.

The Analysed column shows the number of residues for which the backbone conformation was analysed, and the total number of residues.

Mol	Chain	Analysed	Favoured	Allowed	Outliers	Percentiles	
1	A	474/495 (96%)	459 (97%)	14 (3%)	1 (0%)	44	32
1	B	476/495 (96%)	456 (96%)	19 (4%)	1 (0%)	44	32
All	All	950/990 (96%)	915 (96%)	33 (4%)	2 (0%)	44	32

All (2) Ramachandran outliers are listed below:

Mol	Chain	Res	Type
1	A	81	LYS
1	B	328	ASP

5.3.2 Protein sidechains [i](#)

In the following table, the Percentiles column shows the percent sidechain outliers of the chain as a percentile score with respect to all X-ray entries followed by that with respect to entries of similar resolution.

The Analysed column shows the number of residues for which the sidechain conformation was analysed, and the total number of residues.

Mol	Chain	Analysed	Rotameric	Outliers	Percentiles	
1	A	418/434 (96%)	418 (100%)	0	100	100
1	B	420/434 (97%)	420 (100%)	0	100	100
All	All	838/868 (96%)	838 (100%)	0	100	100

There are no protein residues with a non-rotameric sidechain to report.

Sometimes sidechains can be flipped to improve hydrogen bonding and reduce clashes. All (4) such sidechains are listed below:

Mol	Chain	Res	Type
1	A	428	ASN
1	B	192	GLN
1	B	350	GLN
1	B	402	ASN

5.3.3 RNA [i](#)

There are no RNA molecules in this entry.

5.4 Non-standard residues in protein, DNA, RNA chains [i](#)

There are no non-standard protein/DNA/RNA residues in this entry.

5.5 Carbohydrates [i](#)

There are no oligosaccharides in this entry.

5.6 Ligand geometry [i](#)

2 ligands are modelled in this entry.

In the following table, the Counts columns list the number of bonds (or angles) for which Mogul statistics could be retrieved, the number of bonds (or angles) that are observed in the model and

the number of bonds (or angles) that are defined in the Chemical Component Dictionary. The Link column lists molecule types, if any, to which the group is linked. The Z score for a bond length (or angle) is the number of standard deviations the observed value is removed from the expected value. A bond length (or angle) with $|Z| > 2$ is considered an outlier worth inspection. RMSZ is the root-mean-square of all Z scores of the bond lengths (or angles).

Mol	Type	Chain	Res	Link	Bond lengths			Bond angles		
					Counts	RMSZ	# Z > 2	Counts	RMSZ	# Z > 2
2	NMN	B	501	-	22,23,23	4.89	8 (36%)	30,34,34	1.04	1 (3%)
2	NMN	A	501	-	22,23,23	4.91	8 (36%)	30,34,34	1.30	2 (6%)

In the following table, the Chirals column lists the number of chiral outliers, the number of chiral centers analysed, the number of these observed in the model and the number defined in the Chemical Component Dictionary. Similar counts are reported in the Torsion and Rings columns. '-' means no outliers of that kind were identified.

Mol	Type	Chain	Res	Link	Chirals	Torsions	Rings
2	NMN	B	501	-	-	3/14/30/30	0/2/2/2
2	NMN	A	501	-	-	3/14/30/30	0/2/2/2

All (16) bond length outliers are listed below:

Mol	Chain	Res	Type	Atoms	Z	Observed(Å)	Ideal(Å)
2	B	501	NMN	C2R-C1R	-14.69	1.31	1.53
2	A	501	NMN	C2R-C1R	-14.67	1.31	1.53
2	B	501	NMN	C3R-C4R	-9.97	1.27	1.53
2	A	501	NMN	C3R-C4R	-9.80	1.28	1.53
2	A	501	NMN	O4R-C1R	8.18	1.52	1.41
2	B	501	NMN	O4R-C1R	7.92	1.52	1.41
2	B	501	NMN	O4R-C4R	7.16	1.61	1.45
2	A	501	NMN	O4R-C4R	6.96	1.60	1.45
2	A	501	NMN	C7-N7	6.63	1.45	1.33
2	B	501	NMN	C7-N7	6.60	1.45	1.33
2	A	501	NMN	C2R-C3R	5.46	1.68	1.53
2	B	501	NMN	C2R-C3R	5.27	1.67	1.53
2	A	501	NMN	O7-C7	-2.76	1.18	1.24
2	B	501	NMN	O3R-C3R	2.40	1.48	1.43
2	A	501	NMN	C3-C7	2.06	1.53	1.50
2	B	501	NMN	O7-C7	-2.01	1.20	1.24

All (3) bond angle outliers are listed below:

Mol	Chain	Res	Type	Atoms	Z	Observed(°)	Ideal(°)
2	A	501	NMN	C3-C7-N7	4.20	122.78	117.75
2	B	501	NMN	O4R-C1R-C2R	-3.23	102.20	106.93
2	A	501	NMN	C2R-C3R-C4R	2.09	106.70	102.64

There are no chirality outliers.

All (6) torsion outliers are listed below:

Mol	Chain	Res	Type	Atoms
2	A	501	NMN	C5R-O5R-P-O1P
2	A	501	NMN	C5R-O5R-P-O2P
2	B	501	NMN	C5R-O5R-P-O3P
2	B	501	NMN	C5R-O5R-P-O1P
2	B	501	NMN	C5R-O5R-P-O2P
2	A	501	NMN	C5R-O5R-P-O3P

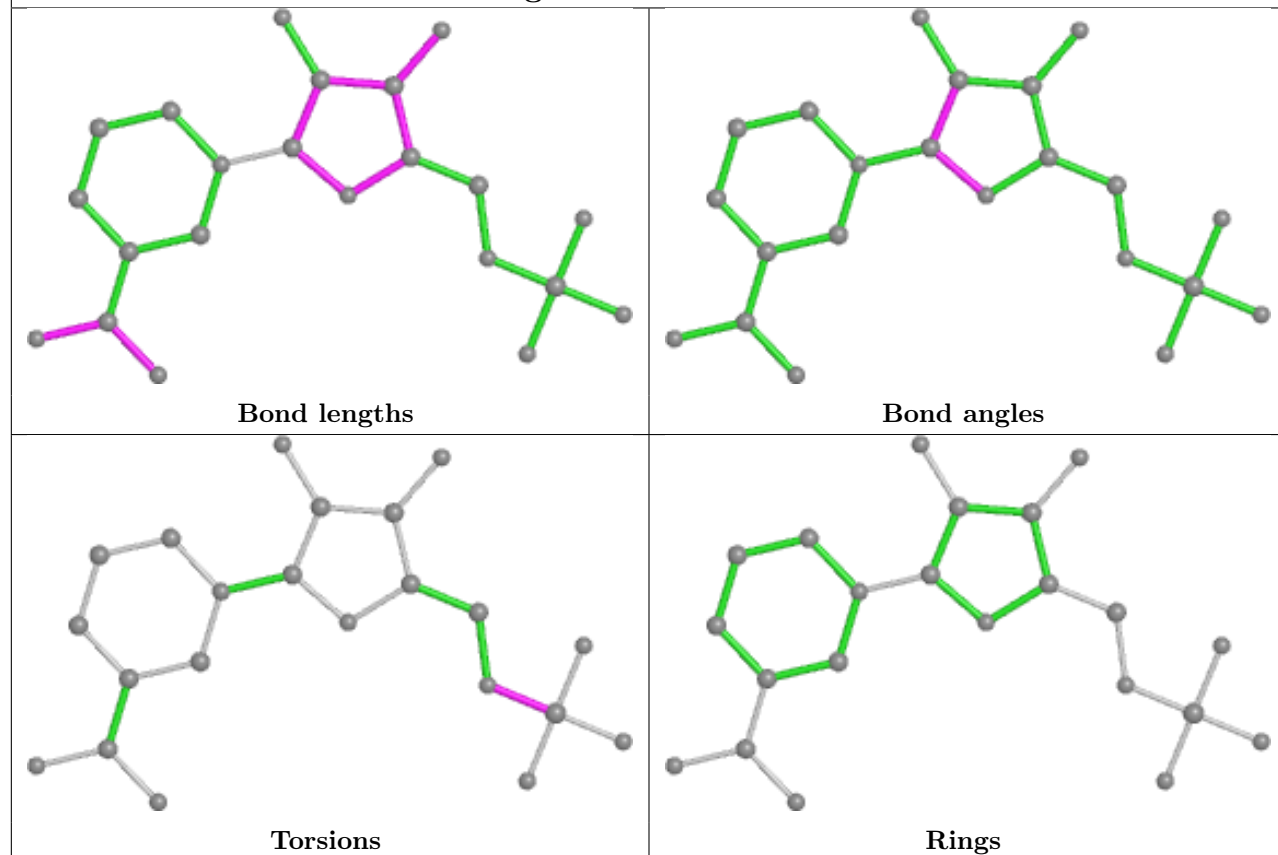
There are no ring outliers.

1 monomer is involved in 1 short contact:

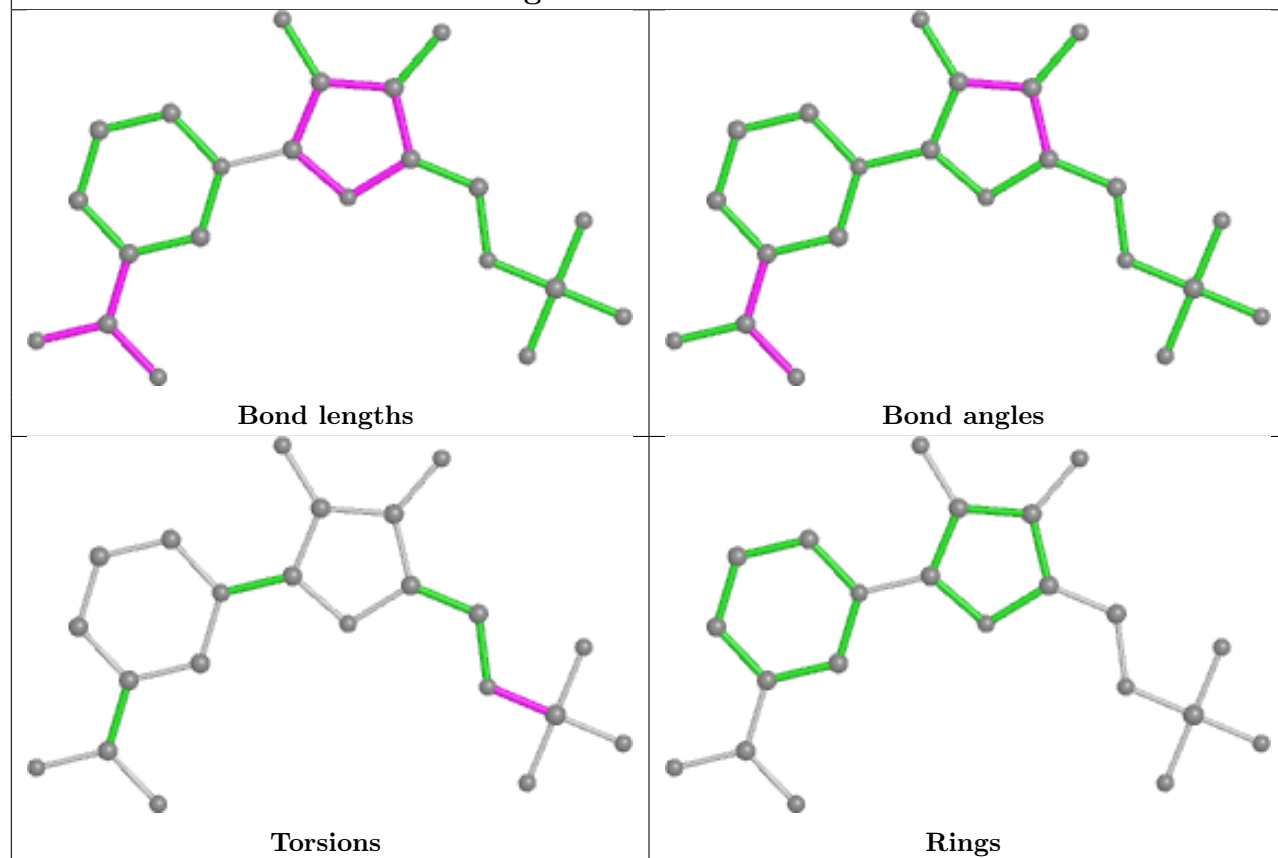
Mol	Chain	Res	Type	Clashes	Symm-Clashes
2	B	501	NMN	1	0

The following is a two-dimensional graphical depiction of Mogul quality analysis of bond lengths, bond angles, torsion angles, and ring geometry for all instances of the Ligand of Interest. In addition, ligands with molecular weight > 250 and outliers as shown on the validation Tables will also be included. For torsion angles, if less than 5% of the Mogul distribution of torsion angles is within 10 degrees of the torsion angle in question, then that torsion angle is considered an outlier. Any bond that is central to one or more torsion angles identified as an outlier by Mogul will be highlighted in the graph. For rings, the root-mean-square deviation (RMSD) between the ring in question and similar rings identified by Mogul is calculated over all ring torsion angles. If the average RMSD is greater than 60 degrees and the minimal RMSD between the ring in question and any Mogul-identified rings is also greater than 60 degrees, then that ring is considered an outlier. The outliers are highlighted in purple. The color gray indicates Mogul did not find sufficient equivalents in the CSD to analyse the geometry.

Ligand NMN B 501



Ligand NMN A 501



5.7 Other polymers [i](#)

There are no such residues in this entry.

5.8 Polymer linkage issues [i](#)

There are no chain breaks in this entry.

6 Fit of model and data

6.1 Protein, DNA and RNA chains

In the following table, the column labelled ‘#RSRZ > 2’ contains the number (and percentage) of RSRZ outliers, followed by percent RSRZ outliers for the chain as percentile scores relative to all X-ray entries and entries of similar resolution. The OWAB column contains the minimum, median, 95th percentile and maximum values of the occupancy-weighted average B-factor per residue. The column labelled ‘Q < 0.9’ lists the number of (and percentage) of residues with an average occupancy less than 0.9.

Mol	Chain	Analysed	<RSRZ>	#RSRZ>2	OWAB(Å ²)	Q<0.9
1	A	478/495 (96%)	0.24	16 (3%) 49 53	22, 32, 49, 69	0
1	B	480/495 (96%)	0.50	35 (7%) 22 23	21, 35, 57, 104	0
All	All	958/990 (96%)	0.37	51 (5%) 33 35	21, 33, 54, 104	0

All (51) RSRZ outliers are listed below:

Mol	Chain	Res	Type	RSRZ
1	B	426	PHE	10.4
1	B	5	LEU	8.1
1	B	98	LEU	6.5
1	B	96	LEU	5.6
1	B	493	THR	5.4
1	B	330	GLU	4.9
1	B	327	ALA	4.5
1	B	95	THR	4.5
1	B	428	ASN	4.5
1	B	97	GLN	4.0
1	B	326	THR	3.8
1	B	78	SER	3.8
1	B	328	ASP	3.8
1	A	335	GLY	3.7
1	B	438	SER	3.7
1	B	239	LEU	3.7
1	B	427	LYS	3.6
1	A	428	ASN	3.4
1	B	21	PHE	3.4
1	B	462	SER	3.4
1	A	345	GLY	3.3
1	B	47	GLU	3.2
1	A	155	ASN	3.1
1	A	5	LEU	3.0

Continued on next page...

Continued from previous page...

Mol	Chain	Res	Type	RSRZ
1	A	427	LYS	2.9
1	A	454	GLY	2.9
1	B	86	THR	2.8
1	B	425	ILE	2.8
1	A	426	PHE	2.7
1	B	345	GLY	2.7
1	A	490	VAL	2.7
1	A	421	GLU	2.7
1	B	99	GLU	2.6
1	B	181	GLU	2.6
1	A	320	ILE	2.5
1	B	325	PRO	2.5
1	B	350	GLN	2.5
1	B	93	GLU	2.5
1	A	334	LYS	2.5
1	A	80	ASP	2.4
1	B	6	ASN	2.4
1	B	91	PHE	2.4
1	A	438	SER	2.3
1	B	440	LYS	2.3
1	B	182	THR	2.2
1	B	348	VAL	2.2
1	B	458	ALA	2.2
1	A	6	ASN	2.1
1	B	412	LYS	2.1
1	A	231	GLU	2.0
1	B	297	GLN	2.0

6.2 Non-standard residues in protein, DNA, RNA chains [i](#)

There are no non-standard protein/DNA/RNA residues in this entry.

6.3 Carbohydrates [i](#)

There are no oligosaccharides in this entry.

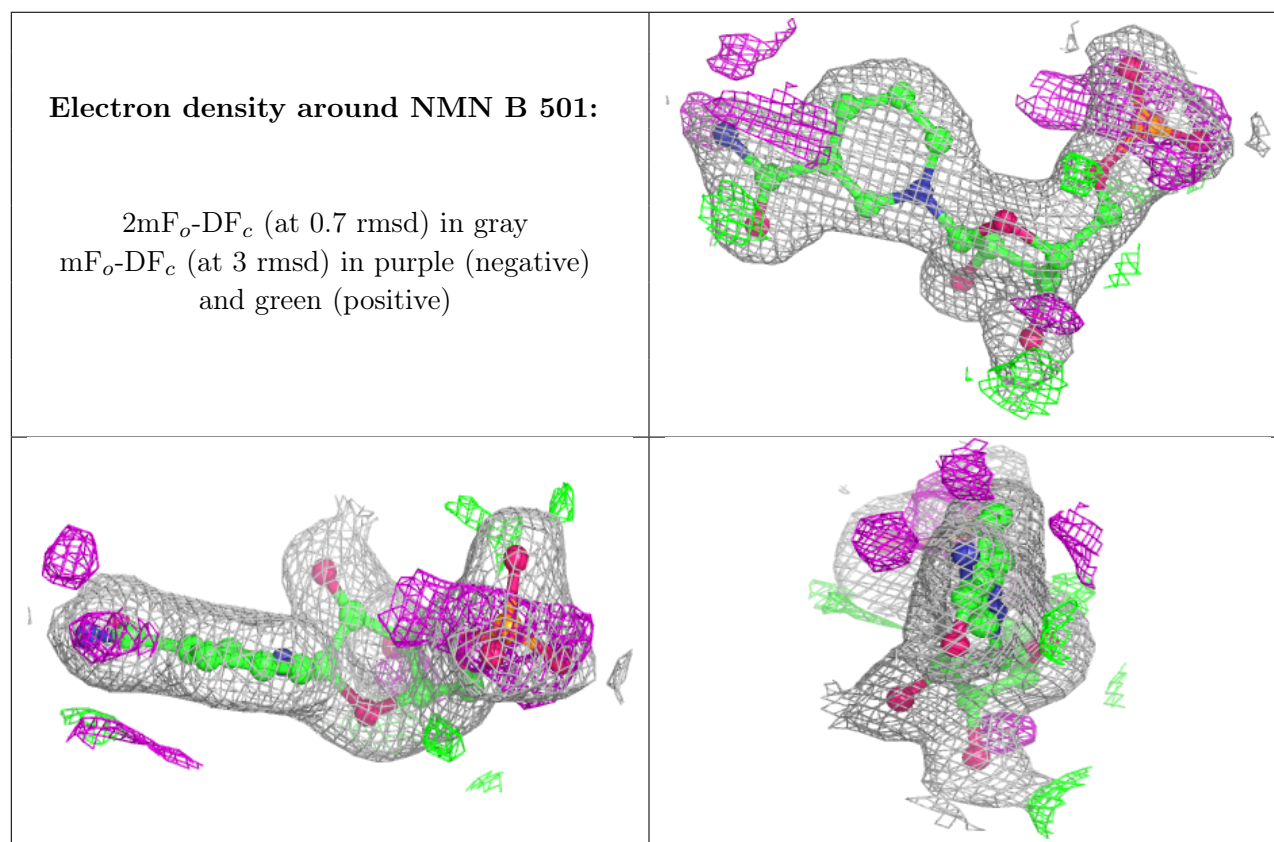
6.4 Ligands [i](#)

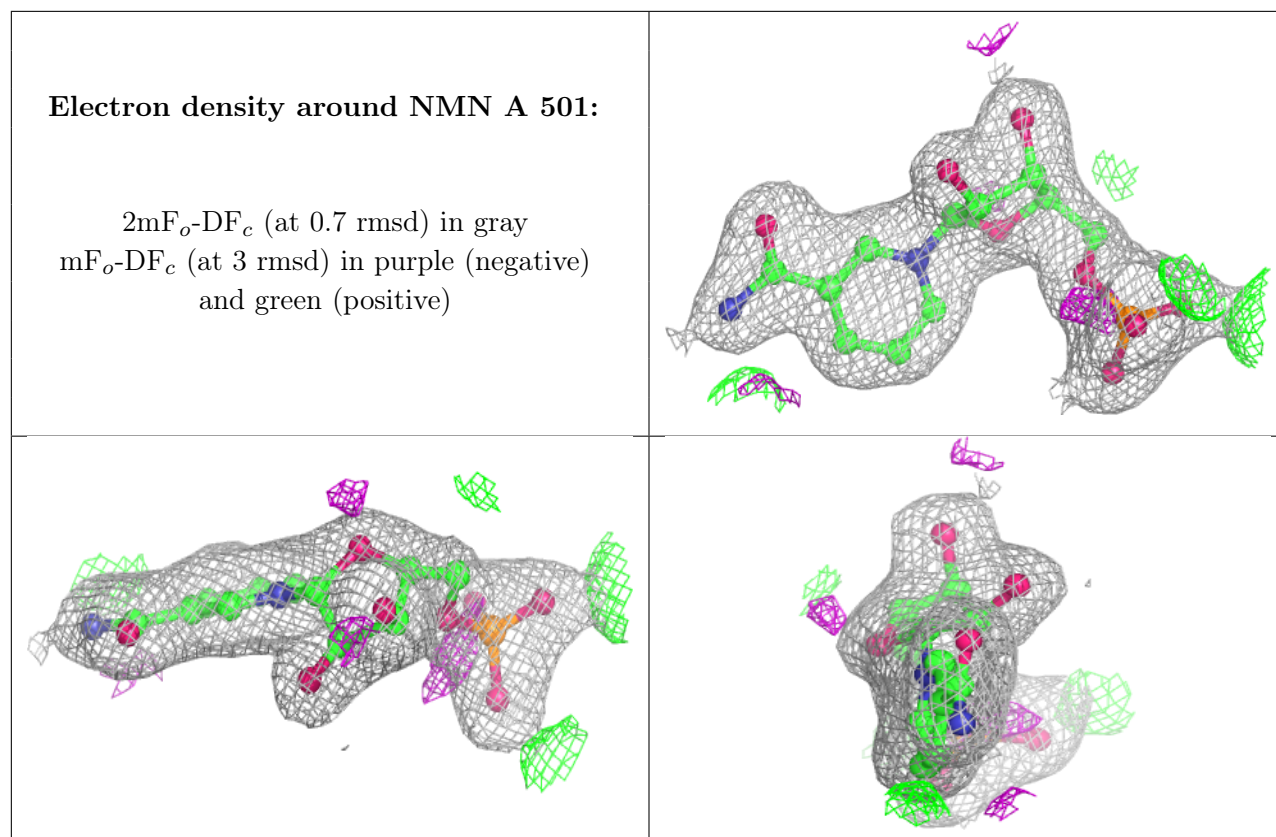
In the following table, the Atoms column lists the number of modelled atoms in the group and the number defined in the chemical component dictionary. The B-factors column lists the minimum,

median, 95th percentile and maximum values of B factors of atoms in the group. The column labelled 'Q< 0.9' lists the number of atoms with occupancy less than 0.9.

Mol	Type	Chain	Res	Atoms	RSCC	RSR	B-factors(\AA^2)	Q<0.9
2	NMN	B	501	22/22	0.95	0.08	24,31,35,41	0
2	NMN	A	501	22/22	0.96	0.07	27,30,34,37	0

The following is a graphical depiction of the model fit to experimental electron density of all instances of the Ligand of Interest. In addition, ligands with molecular weight > 250 and outliers as shown on the geometry validation Tables will also be included. Each fit is shown from different orientation to approximate a three-dimensional view.





6.5 Other polymers [i](#)

There are no such residues in this entry.