



## wwPDB EM Validation Summary Report ⓘ

Sep 9, 2025 – 02:01 PM JST

PDB ID : 9JXR / pdb\_00009jxr  
EMDB ID : EMD-61877  
Title : Cryo-EM structure of Drosophila melanogaster Pxo-G604A  
Authors : Wang, X.; Bai, Z.; Wallis, C.; Wang, H.; Han, Y.; Jin, R.; Lei, M.; Gu, C.;  
Jessen, H.; Shears, S.; Sun, Y.; Corry, B.; Zhang, Y.  
Deposited on : 2024-10-11  
Resolution : 3.53 Å(reported)

This is a wwPDB EM Validation Summary Report for a publicly released PDB entry.

We welcome your comments at [validation@mail.wwpdb.org](mailto:validation@mail.wwpdb.org)

A user guide is available at

<https://www.wwpdb.org/validation/2017/EMValidationReportHelp>  
with specific help available everywhere you see the ⓘ symbol.

The types of validation reports are described at

<http://www.wwpdb.org/validation/2017/FAQs#types>.

---

The following versions of software and data (see [references ⓘ](#)) were used in the production of this report:

EMDB validation analysis : 0.0.1.dev126  
MolProbity : 4-5-2 with Phenix2.0rc1  
Percentile statistics : 20231227.v01 (using entries in the PDB archive December 27th 2023)  
MapQ : 1.9.13  
Ideal geometry (proteins) : Engh & Huber (2001)  
Ideal geometry (DNA, RNA) : Parkinson et al. (1996)  
Validation Pipeline (wwPDB-VP) : 2.45.1

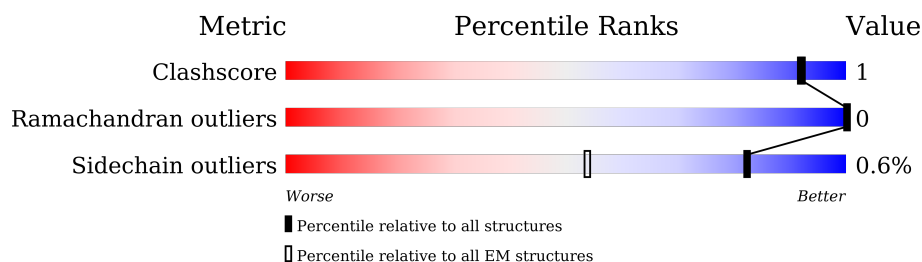
# 1 Overall quality at a glance

The following experimental techniques were used to determine the structure:

*ELECTRON MICROSCOPY*

The reported resolution of this entry is 3.53 Å.

Percentile scores (ranging between 0-100) for global validation metrics of the entry are shown in the following graphic. The table shows the number of entries on which the scores are based.



Metric	Whole archive (#Entries)	EM structures (#Entries)
Clashscore	210492	15764
Ramachandran outliers	207382	16835
Sidechain outliers	206894	16415

The table below summarises the geometric issues observed across the polymeric chains and their fit to the map. The red, orange, yellow and green segments of the bar indicate the fraction of residues that contain outliers for  $\geq 3$ , 2, 1 and 0 types of geometric quality criteria respectively. A grey segment represents the fraction of residues that are not modelled. The numeric value for each fraction is indicated below the corresponding segment, with a dot representing fractions  $\leq 5\%$ . The upper red bar (where present) indicates the fraction of residues that have poor fit to the EM map (all-atom inclusion  $< 40\%$ ). The numeric value is given above the bar.

Mol	Chain	Length	Quality of chain
1	A	671	 21% 34% 43%
1	B	671	 21% 35% 43%

## 2 Entry composition

There is only 1 type of molecule in this entry. The entry contains 6350 atoms, of which 0 are hydrogens and 0 are deuteriums.

In the tables below, the AltConf column contains the number of residues with at least one atom in alternate conformation and the Trace column contains the number of residues modelled with at most 2 atoms.

- Molecule 1 is a protein called Solute carrier family 53 member 1.

Mol	Chain	Residues	Atoms					AltConf	Trace
1	A	384	Total	C	N	O	S	0	0
			3175	2122	508	522	23		
1	B	384	Total	C	N	O	S	0	0
			3175	2122	508	522	23		

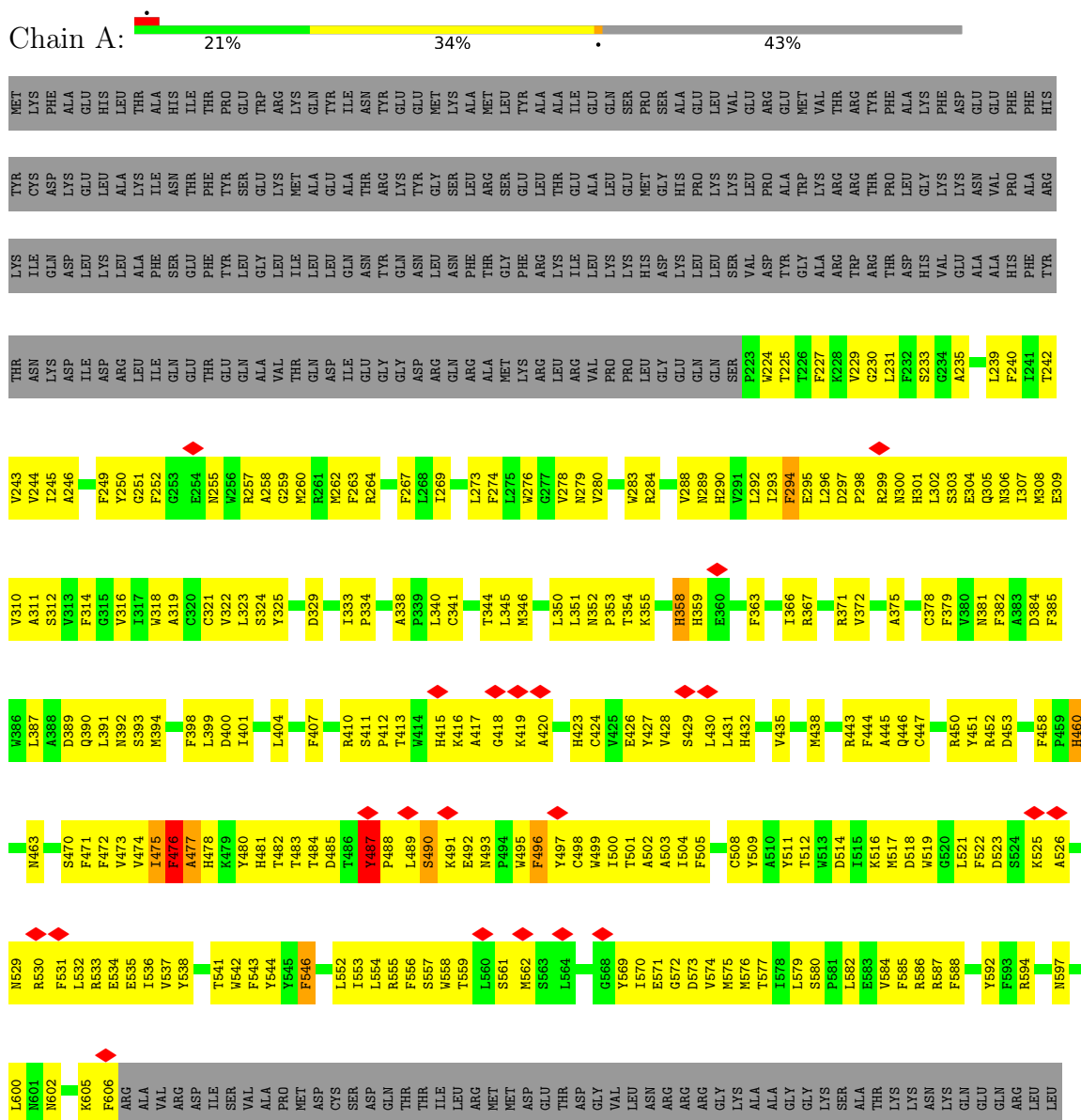
There are 2 discrepancies between the modelled and reference sequences:

Chain	Residue	Modelled	Actual	Comment	Reference
A	604	ALA	GLY	engineered mutation	UNP Q9VRR2
B	604	ALA	GLY	engineered mutation	UNP Q9VRR2

### 3 Residue-property plots

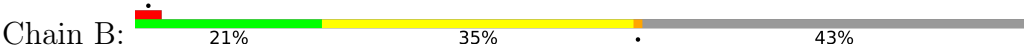
These plots are drawn for all protein, RNA, DNA and oligosaccharide chains in the entry. The first graphic for a chain summarises the proportions of the various outlier classes displayed in the second graphic. The second graphic shows the sequence view annotated by issues in geometry and atom inclusion in map density. Residues are color-coded according to the number of geometric quality criteria for which they contain at least one outlier: green = 0, yellow = 1, orange = 2 and red = 3 or more. A red diamond above a residue indicates a poor fit to the EM map for this residue (all-atom inclusion < 40%). Stretches of 2 or more consecutive residues without any outlier are shown as a green connector. Residues present in the sample, but not in the model, are shown in grey.

#### • Molecule 1: Solute carrier family 53 member 1



LEU  
GLN  
GLY  
GLU  
ALA  
SER  
SER  
ILE  
GLU  
ASP  
LEU  
CYS  
SER

● Molecule 1: Solute carrier family 53 member 1



MET  
LYS  
PHE  
ALA  
GLU  
GLU  
HIS  
LEU  
ALA  
THR  
HIS  
ASN  
HIS  
THR  
ILE  
THR  
PRO  
GLU  
TRP  
ARG  
LYS  
MET  
GLN  
TYR  
ILE  
ALA  
TYR  
GLU  
MET  
GLY  
LYS  
ALA  
MET  
SER  
LEU  
GLY  
TYR  
ALA  
ALA  
ILE  
GLU  
GLN  
SER  
PRO  
SER  
GLY  
HIS  
PRO  
GLU  
LEU  
LYS  
VAL  
GLU  
ARG  
GLU  
MET  
TRP  
VAL  
THR  
ARG  
THR  
TYR  
PHE  
LEU  
ALA  
LYS  
PHE  
ASP  
LYS  
GLU  
ASN  
VAL  
PHE  
PHE  
ALA  
HIS

TYR  
CYS  
ASP  
LYS  
GLU  
LEU  
LEU  
ALA  
LYS  
ILE  
PHE  
SER  
THR  
PHE  
TYR  
SER  
GLU  
LYS  
MET  
GLY  
ALA  
GLU  
TYR  
ASN  
THR  
ARG  
GLY  
SER  
GLY  
LEU  
MET  
GLY  
HIS  
ASP  
MET  
PRO  
SER  
GLY  
HIS  
LYS  
LEU  
GLN  
VAL  
LEU  
GLU  
PRO  
ASP  
P223  
W224  
T225  
T226  
F227  
K228  
V229  
G230  
L231  
F232  
S233  
G234  
A235  
L239  
P240  
I241  
F242

LYS  
ILE  
ASN  
GLN  
ASP  
GLU  
LEU  
LEU  
ALA  
PHE  
SER  
THR  
PHE  
TYR  
LEU  
GLY  
ALA  
LEU  
TYR  
GLN  
ASN  
GLY  
ASN  
ASN  
PHE  
THR  
ALA  
ILE  
LEU  
VAL  
PRO  
LYS  
HIS  
ASP  
LYS  
LEU  
GLN  
SER  
VAL  
ASP  
TYR  
GLY  
ALA  
TRP  
ARG  
THR  
ARG  
THR  
PHE  
ASP  
HIS  
VAL  
GLU  
ASN  
VAL  
PHE  
HIS  
TYR

THR  
ASN  
LYS  
ASP  
ILE  
ASP  
ARG  
LEU  
ILE  
GLN  
THR  
THR  
GLU  
GLN  
VAL  
ALA  
THR  
ILE  
ASP  
GLY  
ASP  
ARG  
GLN  
ARG  
ALA  
MET  
LYS  
ARG  
LEU  
ARG  
LEU  
PRO  
HIS  
ASP  
LYS  
GLY  
GLU  
GLN  
SER  
P223  
W224  
T225  
T226  
F227  
K228  
V229  
G230  
L231  
F232  
S233  
G234  
A235  
L239  
P240  
I241  
F242

V243  
V244  
L245  
A246  
F249  
Y250  
G251  
F252  
E253  
E254  
N255  
W256  
R257  
A258  
G259  
N260  
M261  
M262  
F263  
R264  
F267  
L268  
L269  
L273  
F274  
L275  
W276  
G277  
W283  
R284  
V288  
N289  
H290  
V291  
L292  
L293  
F294  
E295  
L296  
D297  
P298  
R299  
N300  
H301  
L302  
S303  
E304  
N305  
N306  
D384  
F385  
N308  
E309

V310  
A311  
S312  
V313  
F314  
G315  
V316  
I317  
W318  
A319  
V322  
L323  
S324  
Y325  
D329  
I333  
P334  
A338  
P339  
L340  
C341  
T344  
L345  
M346  
L350  
L351  
N352  
P353  
T354  
K355  
H358  
H359  
E360  
F363  
I366  
R367  
R371  
V372  
A375  
C378  
F379  
V380  
N381  
F382  
A383  
D384  
F385  
V386

L387  
A388  
Q389  
D390  
L391  
N392  
S393  
H394  
F398  
L399  
D400  
I401  
L404  
F407  
R410  
S411  
P412  
T413  
W414  
H415  
K416  
A417  
G418  
K419  
A420  
H423  
C424  
V425  
E426  
Y427  
V428  
S429  
L430  
L431  
H432  
V435  
H438  
R443  
F444  
A445  
Q446  
C447  
R450  
Y451  
R452  
D453  
F458  
H459  
H460

M463  
S470  
F471  
F472  
V473  
V474  
I475  
F476  
A477  
H478  
K479  
Y480  
H481  
T482  
T483  
T484  
D485  
T486  
Y487  
L488  
S490  
K491  
E492  
M493  
F494  
W495  
F496  
Y497  
C498  
W499  
I500  
T501  
A502  
A503  
I504  
F505  
C508  
Y509  
A510  
Y511  
T512  
W513  
D514  
I515  
K516  
M517  
D518  
W519  
G520  
L521  
F522  
D523  
S524  
K525  
A526  
N529

R530  
F531  
L532  
R533  
E534  
I535  
E536  
V537  
Y538  
T541  
W542  
F543  
Y544  
Y545  
F546  
L552  
I553  
L554  
R555  
F556  
S557  
W558  
T559  
L560  
S561  
M562  
S563  
L564  
G568  
Y569  
I570  
E571  
O572  
D573  
W574  
M575  
M576  
T577  
L578  
L579  
S580  
F581  
L582  
E583  
V584  
F585  
R586  
R587  
F588  
Y592  
F593  
R594  
N597  
L600

R601  
M602  
K605  
F606  
ARG  
ALA  
VAL  
ARG  
ASP  
ILE  
SER  
VAL  
F543  
ALA  
PRO  
MET  
MET  
ASP  
CYS  
SER  
SER  
ASP  
GLN  
THR  
THR  
ILE  
LEU  
LEU  
MET  
MET  
ASP  
GLU  
THR  
THR  
GLY  
VAL  
LEU  
ASN  
ARG  
ARG  
ARG  
GLY  
LYS  
ALA  
ALA  
GLY  
LYS  
SER  
SER  
ALA  
THR  
LYS  
LYS  
ASN  
LYS  
GLN  
GLU  
GLN  
ARG  
ARG  
LEU  
LEU  
LEU

GLN  
GLY  
GLU  
SER  
ILE  
GLU  
ASP  
ASP  
LEU  
CYS  
SER

## 4 Experimental information

Property	Value	Source
EM reconstruction method	SINGLE PARTICLE	Depositor
Imposed symmetry	POINT, Not provided	
Number of particles used	58767	Depositor
Resolution determination method	FSC 0.143 CUT-OFF	Depositor
CTF correction method	PHASE FLIPPING AND AMPLITUDE CORRECTION	Depositor
Microscope	TFS KRIOS	Depositor
Voltage (kV)	300	Depositor
Electron dose ( $e^-/\text{\AA}^2$ )	49.41	Depositor
Minimum defocus (nm)	1400	Depositor
Maximum defocus (nm)	2400	Depositor
Magnification	Not provided	
Image detector	GATAN K3 BIOCONTINUUM (6k x 4k)	Depositor
Maximum map value	4.794	Depositor
Minimum map value	-2.483	Depositor
Average map value	-0.000	Depositor
Map value standard deviation	0.071	Depositor
Recommended contour level	0.6	Depositor
Map size ( $\text{\AA}$ )	337.59998, 337.59998, 337.59998	wwPDB
Map dimensions	320, 320, 320	wwPDB
Map angles ( $^\circ$ )	90.0, 90.0, 90.0	wwPDB
Pixel spacing ( $\text{\AA}$ )	1.055, 1.055, 1.055	Depositor

## 5 Model quality

### 5.1 Standard geometry

The Z score for a bond length (or angle) is the number of standard deviations the observed value is removed from the expected value. A bond length (or angle) with  $|Z| > 5$  is considered an outlier worth inspection. RMSZ is the root-mean-square of all Z scores of the bond lengths (or angles).

Mol	Chain	Bond lengths		Bond angles	
		RMSZ	$\# Z  > 5$	RMSZ	$\# Z  > 5$
1	A	2.61	200/3291 (6.1%)	2.32	208/4483 (4.6%)
1	B	2.61	202/3291 (6.1%)	2.32	209/4483 (4.7%)
All	All	2.61	402/6582 (6.1%)	2.32	417/8966 (4.7%)

Chiral center outliers are detected by calculating the chiral volume of a chiral center and verifying if the center is modelled as a planar moiety or with the opposite hand. A planarity outlier is detected by checking planarity of atoms in a peptide group, atoms in a mainchain group or atoms of a sidechain that are expected to be planar.

Mol	Chain	#Chirality outliers	#Planarity outliers
1	A	0	6
1	B	0	6
All	All	0	12

The worst 5 of 402 bond length outliers are listed below:

Mol	Chain	Res	Type	Atoms	Z	Observed(Å)	Ideal(Å)
1	B	511	TYR	CA-C	-8.95	1.41	1.52
1	A	511	TYR	CA-C	-8.91	1.41	1.52
1	B	393	SER	CA-C	-8.85	1.41	1.52
1	A	393	SER	CA-C	-8.84	1.41	1.52
1	B	574	VAL	CA-C	8.64	1.63	1.52

The worst 5 of 417 bond angle outliers are listed below:

Mol	Chain	Res	Type	Atoms	Z	Observed(°)	Ideal(°)
1	B	229	VAL	N-CA-C	-11.42	99.18	110.72
1	A	229	VAL	N-CA-C	-11.40	99.20	110.72
1	B	544	TYR	N-CA-C	-10.15	100.30	111.36
1	A	544	TYR	N-CA-C	-10.14	100.31	111.36
1	B	542	TRP	N-CA-C	-10.11	100.09	111.82

There are no chirality outliers.

5 of 12 planarity outliers are listed below:

Mol	Chain	Res	Type	Group
1	A	294	PHE	Sidechain
1	A	358	HIS	Sidechain
1	A	460	HIS	Sidechain
1	A	487	TYR	Sidechain
1	A	496	PHE	Sidechain

## 5.2 Too-close contacts [i](#)

In the following table, the Non-H and H(model) columns list the number of non-hydrogen atoms and hydrogen atoms in the chain respectively. The H(added) column lists the number of hydrogen atoms added and optimized by MolProbity. The Clashes column lists the number of clashes within the asymmetric unit, whereas Symm-Clashes lists symmetry-related clashes.

Mol	Chain	Non-H	H(model)	H(added)	Clashes	Symm-Clashes
1	A	3175	0	3094	9	0
1	B	3175	0	3094	9	0
All	All	6350	0	6188	17	0

The all-atom clashscore is defined as the number of clashes found per 1000 atoms (including hydrogen atoms). The all-atom clashscore for this structure is 1.

The worst 5 of 17 close contacts within the same asymmetric unit are listed below, sorted by their clash magnitude.

Atom-1	Atom-2	Interatomic distance (Å)	Clash overlap (Å)
1:A:571:GLU:CD	1:A:572:GLY:N	2.42	0.77
1:B:571:GLU:CD	1:B:572:GLY:N	2.42	0.77
1:A:571:GLU:CG	1:A:572:GLY:N	2.73	0.52
1:B:571:GLU:CD	1:B:572:GLY:CA	2.84	0.51
1:B:571:GLU:CG	1:B:572:GLY:N	2.73	0.50

There are no symmetry-related clashes.

## 5.3 Torsion angles [i](#)

### 5.3.1 Protein backbone [i](#)

In the following table, the Percentiles column shows the percent Ramachandran outliers of the chain as a percentile score with respect to all PDB entries followed by that with respect to all EM entries.

The Analysed column shows the number of residues for which the backbone conformation was analysed, and the total number of residues.

Mol	Chain	Analysed	Favoured	Allowed	Outliers	Percentiles	
1	A	382/671 (57%)	369 (97%)	13 (3%)	0	100	100
1	B	382/671 (57%)	369 (97%)	13 (3%)	0	100	100
All	All	764/1342 (57%)	738 (97%)	26 (3%)	0	100	100

There are no Ramachandran outliers to report.

### 5.3.2 Protein sidechains ⓘ

In the following table, the Percentiles column shows the percent sidechain outliers of the chain as a percentile score with respect to all PDB entries followed by that with respect to all EM entries.

The Analysed column shows the number of residues for which the sidechain conformation was analysed, and the total number of residues.

Mol	Chain	Analysed	Rotameric	Outliers	Percentiles	
1	A	334/583 (57%)	332 (99%)	2 (1%)	84	92
1	B	334/583 (57%)	332 (99%)	2 (1%)	84	92
All	All	668/1166 (57%)	664 (99%)	4 (1%)	82	92

All (4) residues with a non-rotameric sidechain are listed below:

Mol	Chain	Res	Type
1	A	301	HIS
1	A	476	PHE
1	B	301	HIS
1	B	476	PHE

Sometimes sidechains can be flipped to improve hydrogen bonding and reduce clashes. 5 of 7 such sidechains are listed below:

Mol	Chain	Res	Type
1	B	289	ASN
1	B	290	HIS
1	B	390	GLN
1	B	335	GLN
1	A	335	GLN

### 5.3.3 RNA [i](#)

There are no RNA molecules in this entry.

### 5.4 Non-standard residues in protein, DNA, RNA chains [i](#)

There are no non-standard protein/DNA/RNA residues in this entry.

### 5.5 Carbohydrates [i](#)

There are no oligosaccharides in this entry.

### 5.6 Ligand geometry [i](#)

There are no ligands in this entry.

### 5.7 Other polymers [i](#)

There are no such residues in this entry.

### 5.8 Polymer linkage issues [i](#)

There are no chain breaks in this entry.

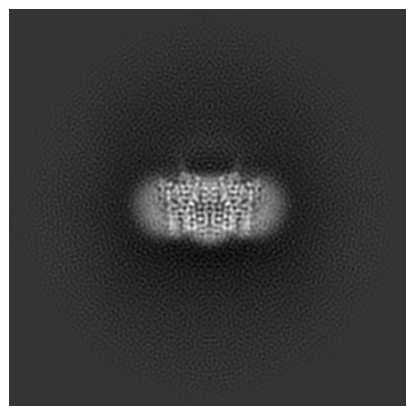
## 6 Map visualisation [i](#)

This section contains visualisations of the EMDB entry EMD-61877. These allow visual inspection of the internal detail of the map and identification of artifacts.

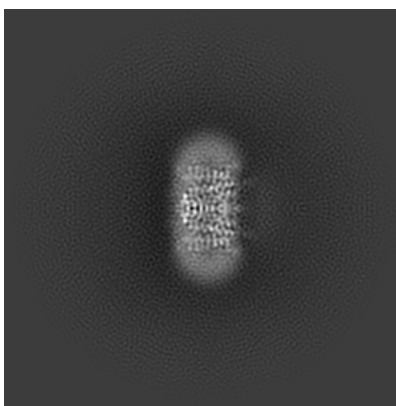
Images derived from a raw map, generated by summing the deposited half-maps, are presented below the corresponding image components of the primary map to allow further visual inspection and comparison with those of the primary map.

### 6.1 Orthogonal projections [i](#)

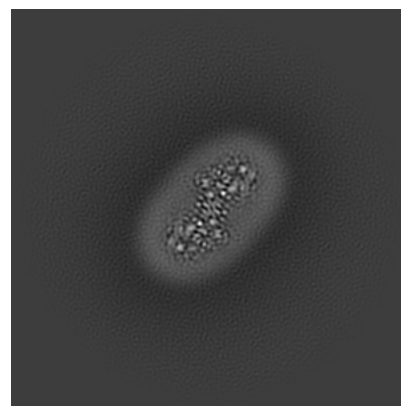
#### 6.1.1 Primary map



X

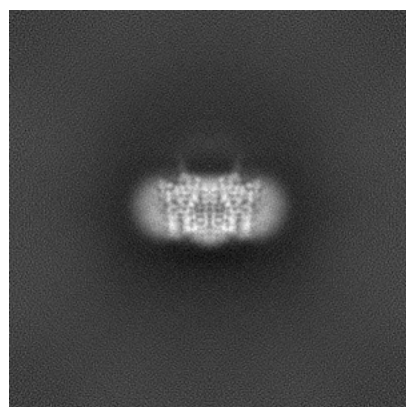


Y

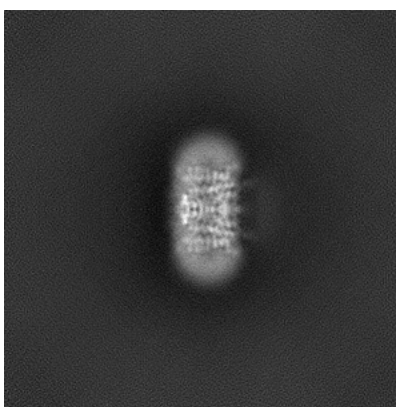


Z

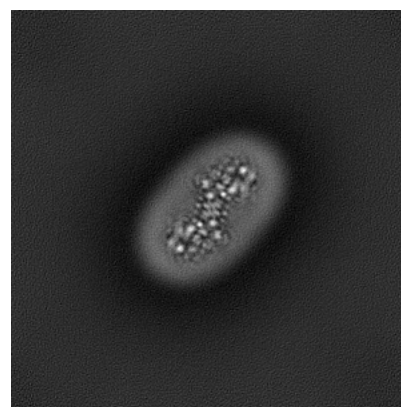
#### 6.1.2 Raw map



X



Y

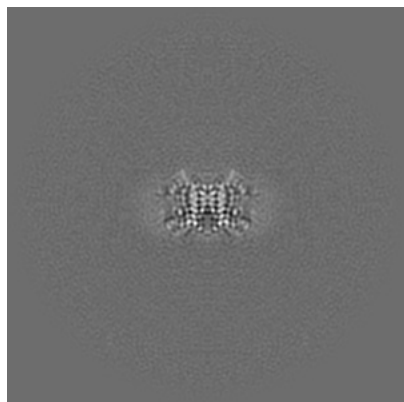


Z

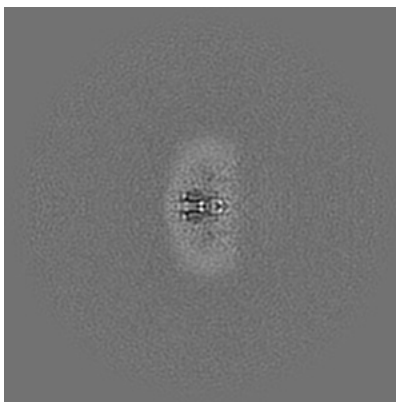
The images above show the map projected in three orthogonal directions.

## 6.2 Central slices [i](#)

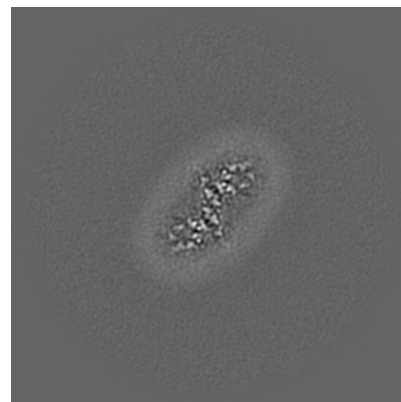
### 6.2.1 Primary map



X Index: 160

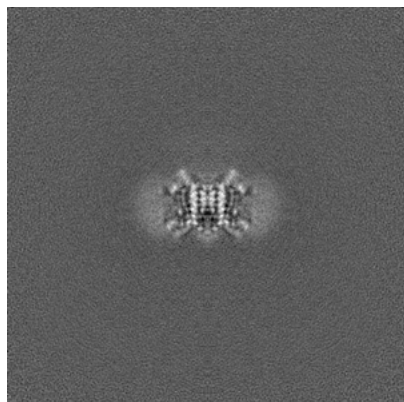


Y Index: 160

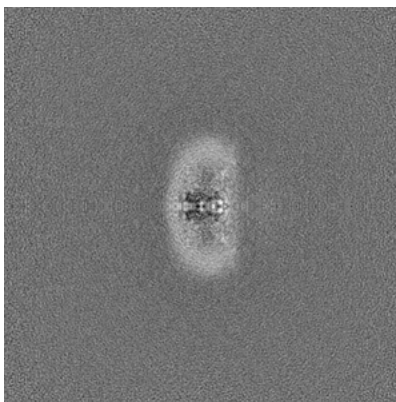


Z Index: 160

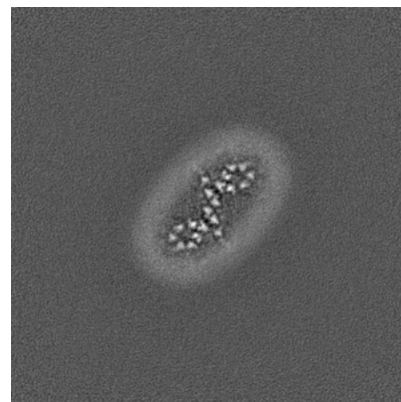
### 6.2.2 Raw map



X Index: 160



Y Index: 160

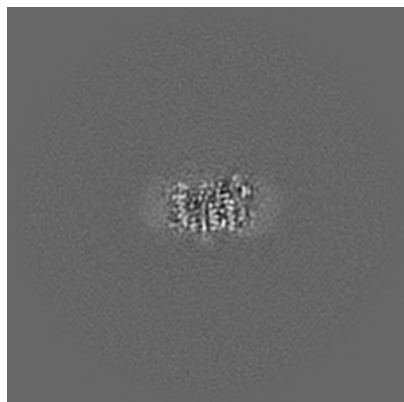


Z Index: 160

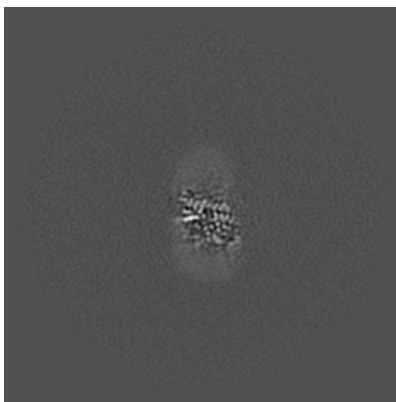
The images above show central slices of the map in three orthogonal directions.

## 6.3 Largest variance slices [i](#)

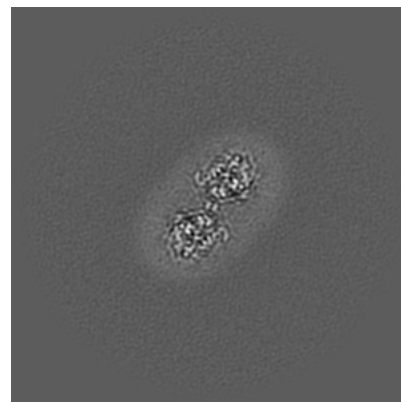
### 6.3.1 Primary map



X Index: 165

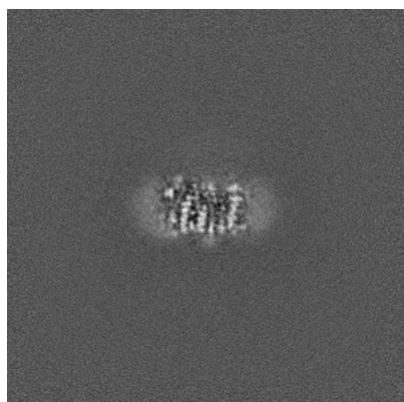


Y Index: 148

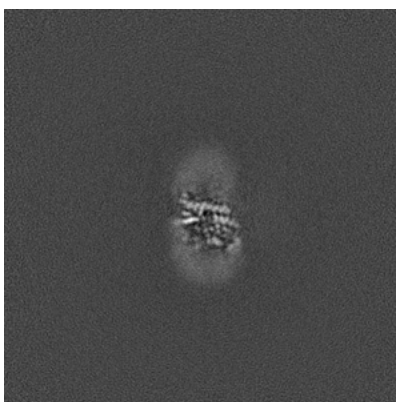


Z Index: 173

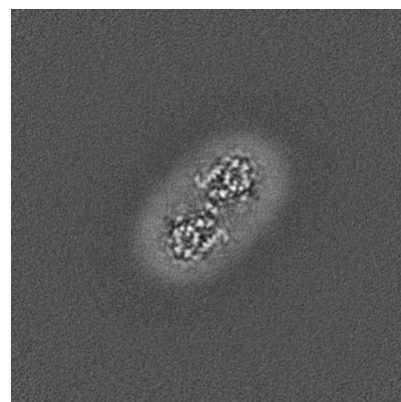
### 6.3.2 Raw map



X Index: 155



Y Index: 148

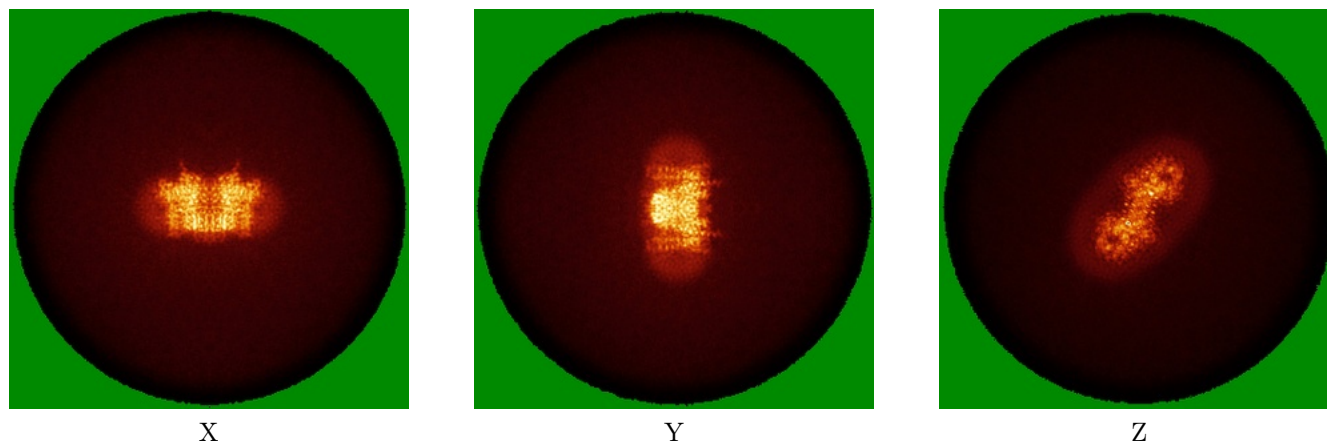


Z Index: 174

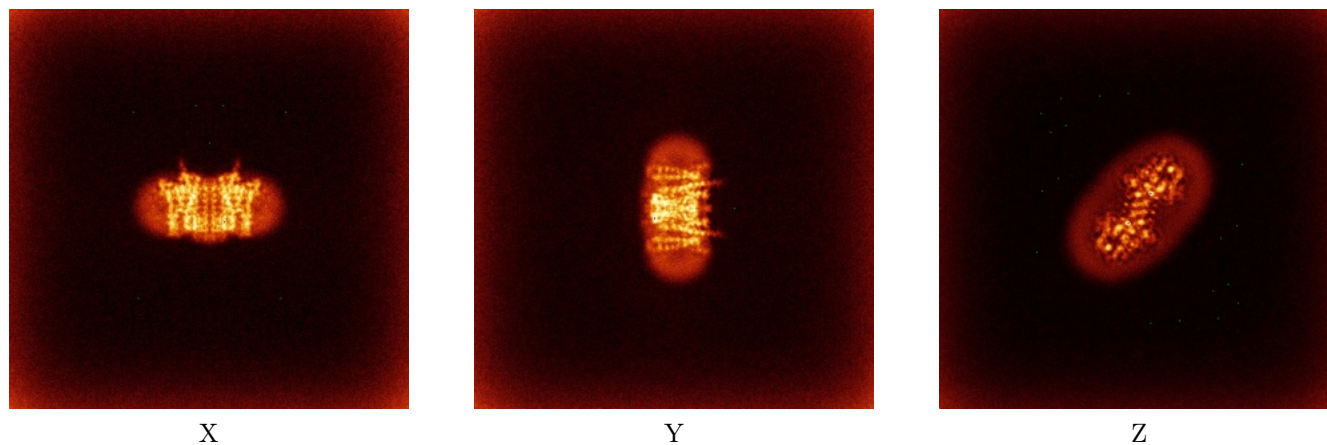
The images above show the largest variance slices of the map in three orthogonal directions.

## 6.4 Orthogonal standard-deviation projections (False-color) [i](#)

### 6.4.1 Primary map



### 6.4.2 Raw map



The images above show the map standard deviation projections with false color in three orthogonal directions. Minimum values are shown in green, max in blue, and dark to light orange shades represent small to large values respectively.

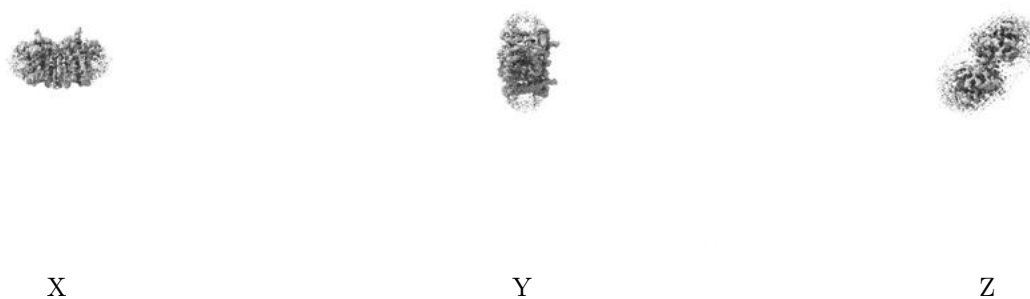
## 6.5 Orthogonal surface views [i](#)

### 6.5.1 Primary map



The images above show the 3D surface view of the map at the recommended contour level 0.6. These images, in conjunction with the slice images, may facilitate assessment of whether an appropriate contour level has been provided.

### 6.5.2 Raw map



These images show the 3D surface of the raw map. The raw map's contour level was selected so that its surface encloses the same volume as the primary map does at its recommended contour level.

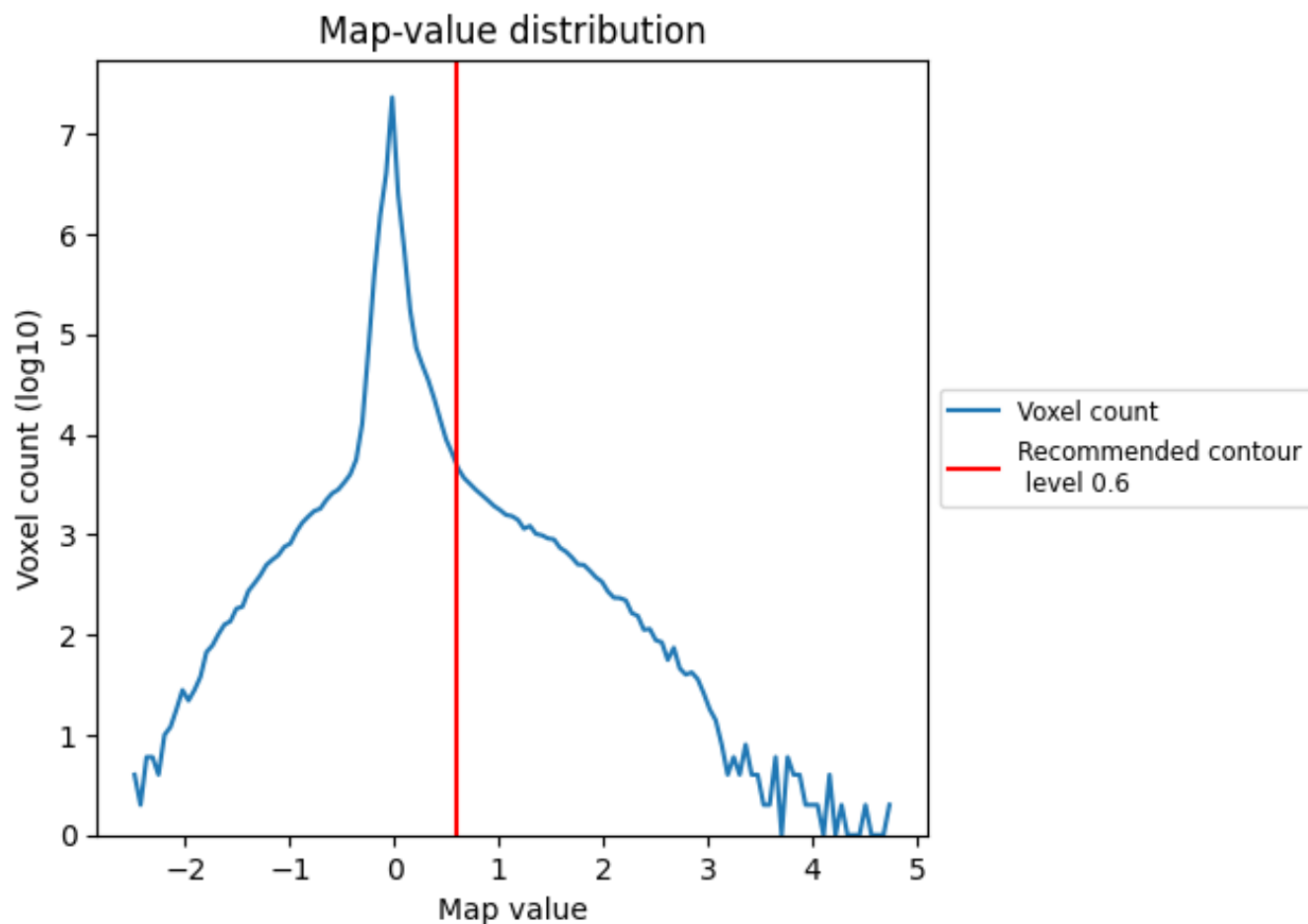
## 6.6 Mask visualisation [i](#)

This section was not generated. No masks/segmentation were deposited.

## 7 Map analysis [i](#)

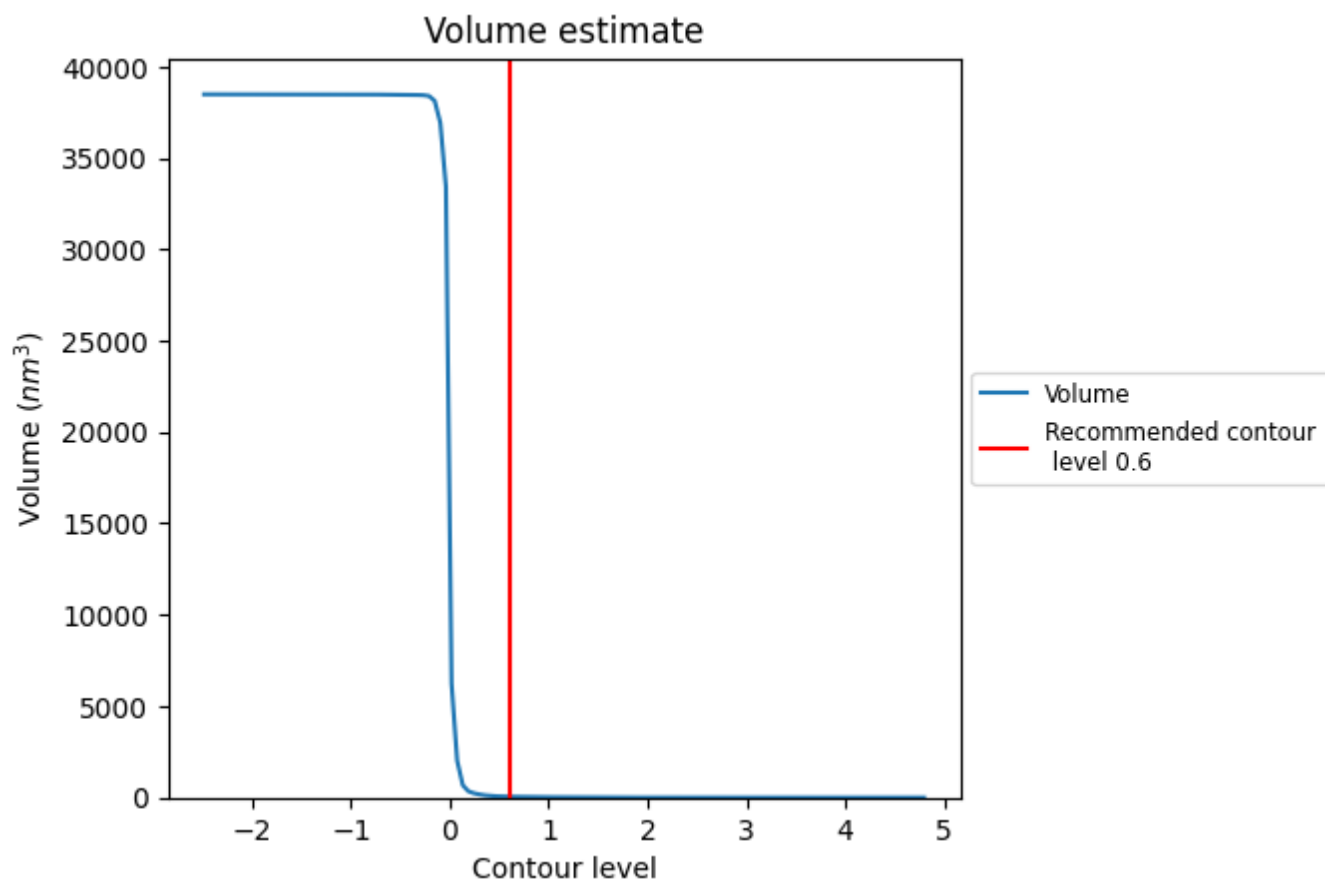
This section contains the results of statistical analysis of the map.

### 7.1 Map-value distribution [i](#)



The map-value distribution is plotted in 128 intervals along the x-axis. The y-axis is logarithmic. A spike in this graph at zero usually indicates that the volume has been masked.

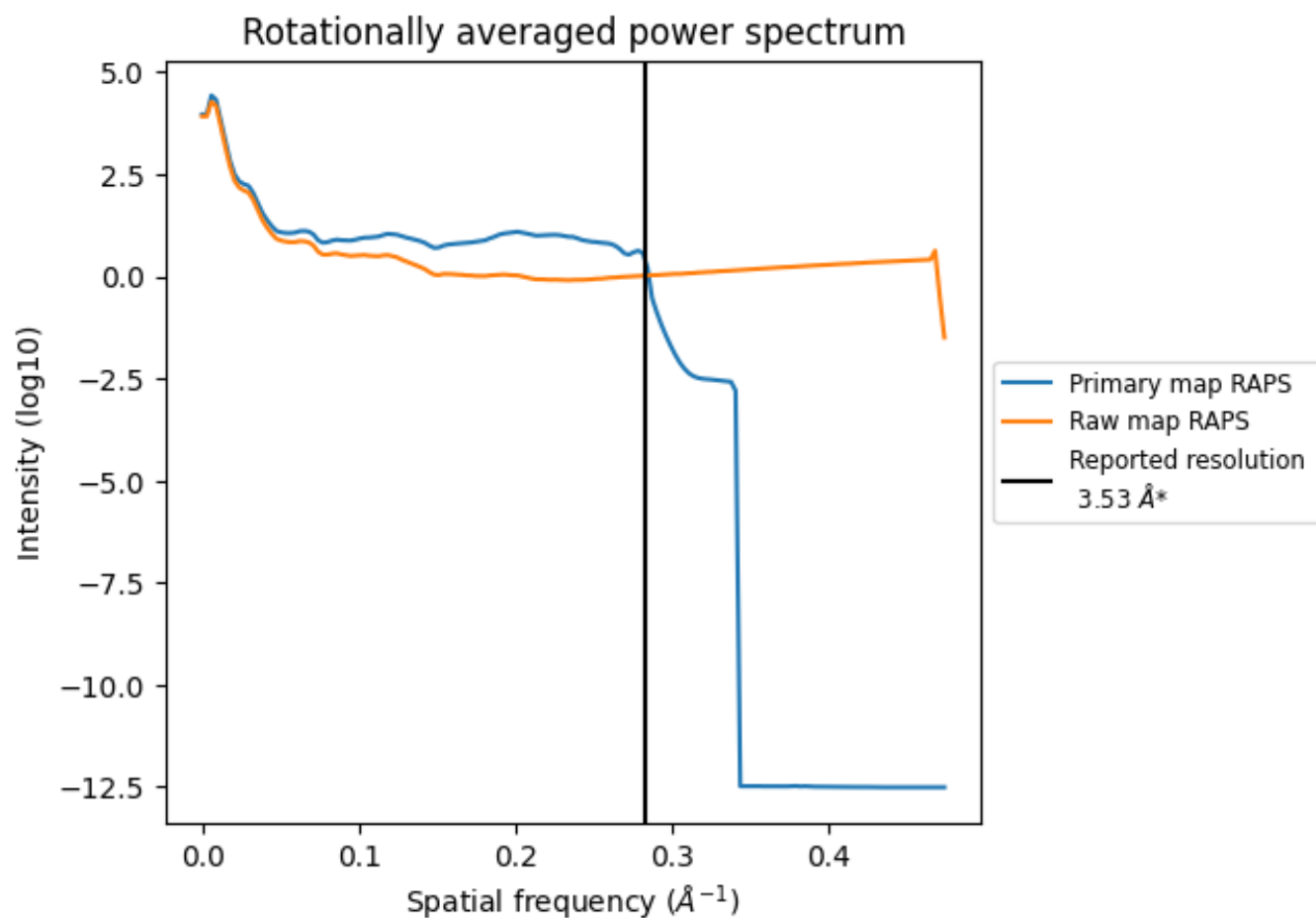
## 7.2 Volume estimate [i](#)



The volume at the recommended contour level is 48 nm<sup>3</sup>; this corresponds to an approximate mass of 43 kDa.

The volume estimate graph shows how the enclosed volume varies with the contour level. The recommended contour level is shown as a vertical line and the intersection between the line and the curve gives the volume of the enclosed surface at the given level.

### 7.3 Rotationally averaged power spectrum ⓘ

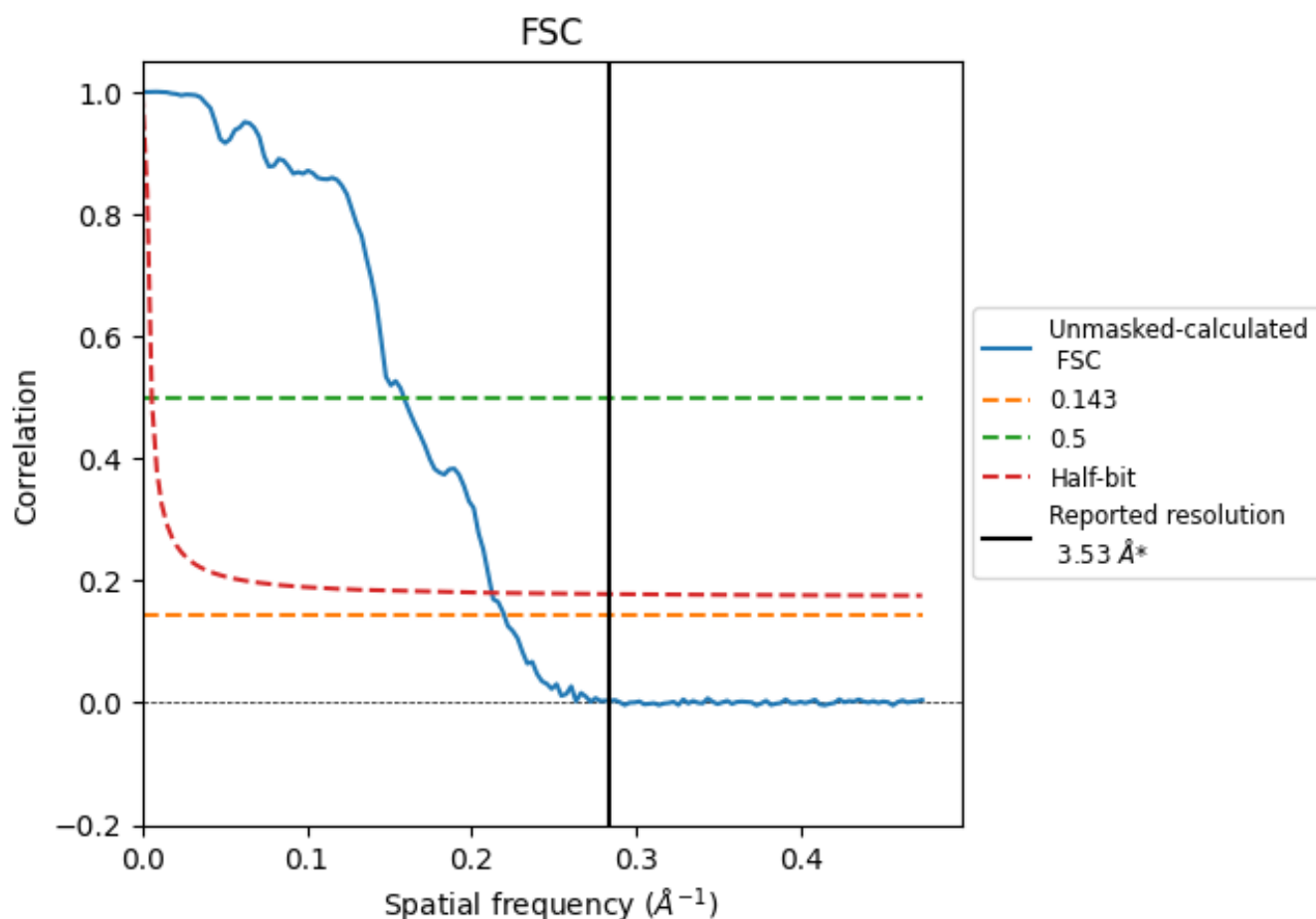


\*Reported resolution corresponds to spatial frequency of 0.283 Å<sup>-1</sup>

## 8 Fourier-Shell correlation [i](#)

Fourier-Shell Correlation (FSC) is the most commonly used method to estimate the resolution of single-particle and subtomogram-averaged maps. The shape of the curve depends on the imposed symmetry, mask and whether or not the two 3D reconstructions used were processed from a common reference. The reported resolution is shown as a black line. A curve is displayed for the half-bit criterion in addition to lines showing the 0.143 gold standard cut-off and 0.5 cut-off.

### 8.1 FSC [i](#)



\*Reported resolution corresponds to spatial frequency of 0.283 Å<sup>-1</sup>

## 8.2 Resolution estimates [i](#)

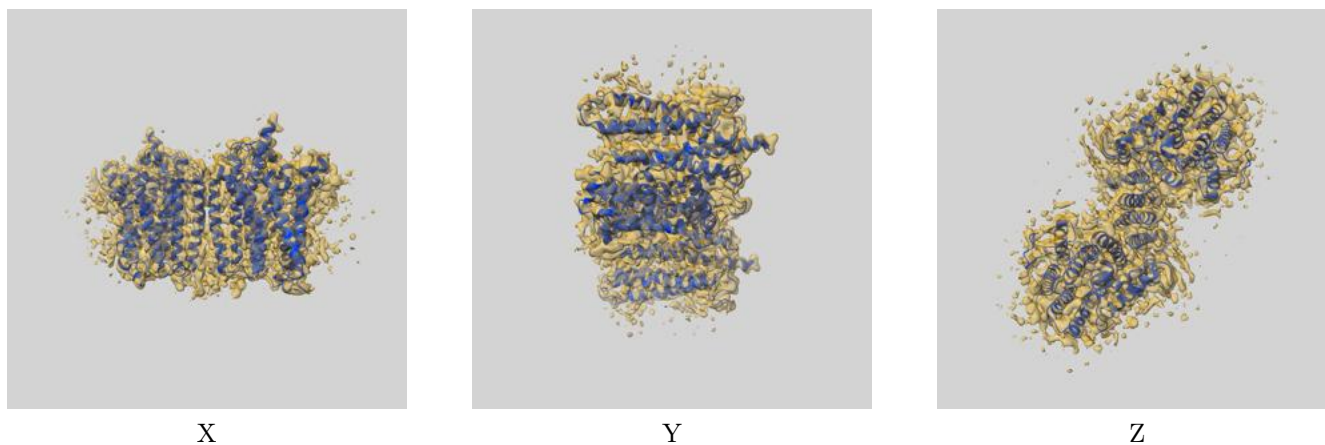
Resolution estimate (Å)	Estimation criterion (FSC cut-off)		
	0.143	0.5	Half-bit
Reported by author	3.53	-	-
Author-provided FSC curve	-	-	-
Unmasked-calculated*	4.55	6.29	4.71

\*Resolution estimate based on FSC curve calculated by comparison of deposited half-maps. The value from deposited half-maps intersecting FSC 0.143 CUT-OFF 4.55 differs from the reported value 3.53 by more than 10 %

## 9 Map-model fit [i](#)

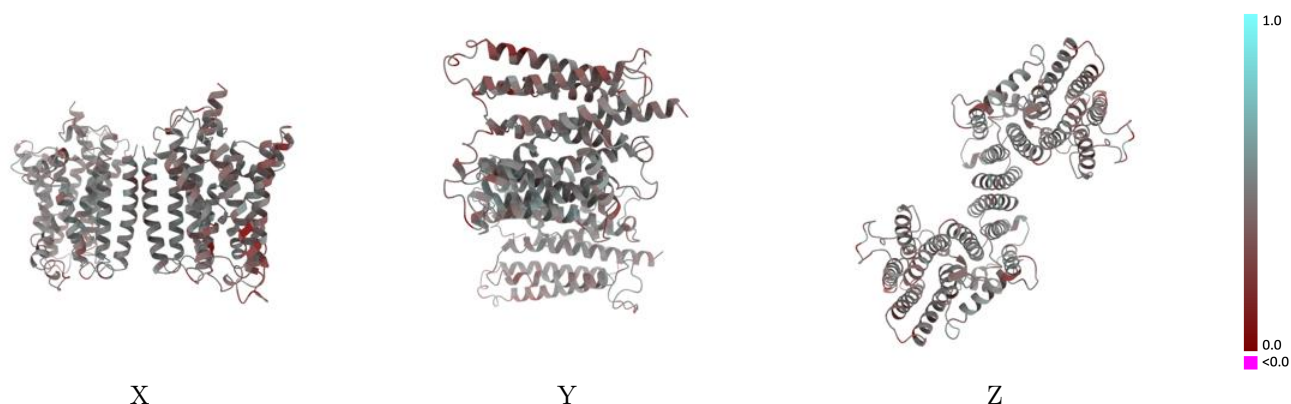
This section contains information regarding the fit between EMDB map EMD-61877 and PDB model 9JXR. Per-residue inclusion information can be found in [section 3](#) on [page 4](#).

### 9.1 Map-model overlay [i](#)



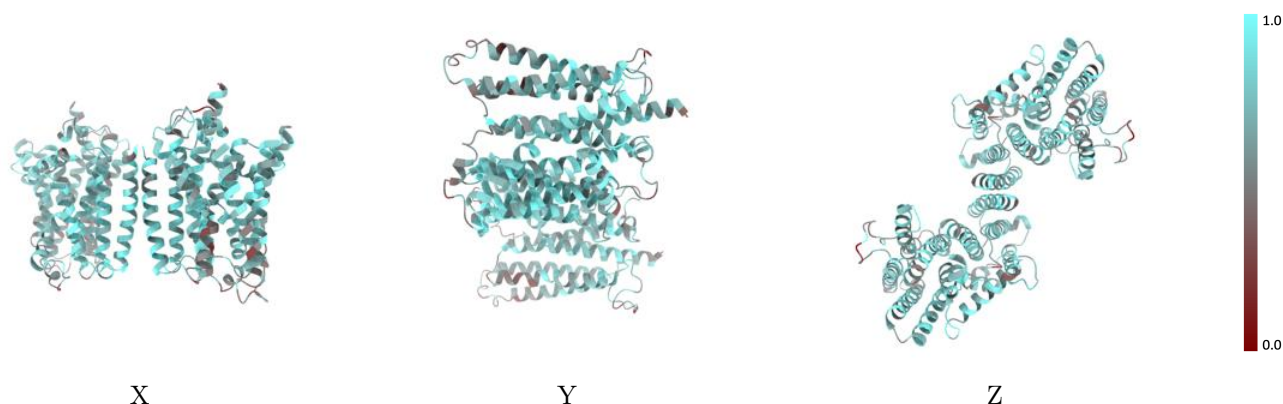
The images above show the 3D surface view of the map at the recommended contour level 0.6 at 50% transparency in yellow overlaid with a ribbon representation of the model coloured in blue. These images allow for the visual assessment of the quality of fit between the atomic model and the map.

## 9.2 Q-score mapped to coordinate model [i](#)



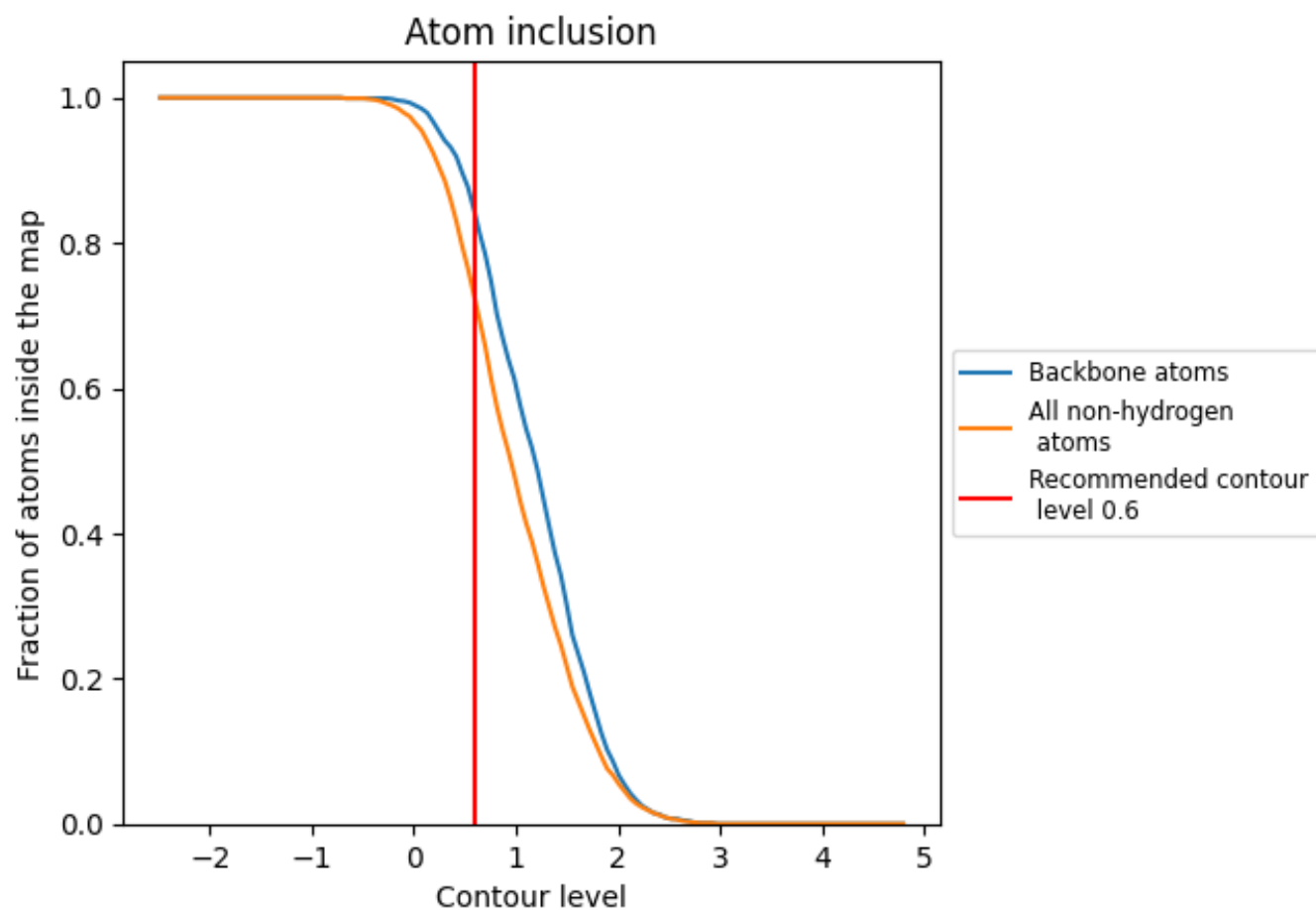
The images above show the model with each residue coloured according to its Q-score. This shows their resolvability in the map with higher Q-score values reflecting better resolvability. Please note: Q-score is calculating the resolvability of atoms, and thus high values are only expected at resolutions at which atoms can be resolved. Low Q-score values may therefore be expected for many entries.

## 9.3 Atom inclusion mapped to coordinate model [i](#)



The images above show the model with each residue coloured according to its atom inclusion. This shows to what extent they are inside the map at the recommended contour level (0.6).

## 9.4 Atom inclusion [i](#)



At the recommended contour level, 84% of all backbone atoms, 72% of all non-hydrogen atoms, are inside the map.

9.5 Map-model fit summary ⓘ

The table lists the average atom inclusion at the recommended contour level (0.6) and Q-score for the entire model and for each chain.

Chain	Atom inclusion	Q-score
All	<div></div> 0.7220	<div></div> 0.4290
A	<div></div> 0.7210	<div></div> 0.4300
B	<div></div> 0.7230	<div></div> 0.4280

