



Full wwPDB EM Validation Report ⓘ

Mar 20, 2026 – 12:21 AM UTC

PDB ID : 9IGX / pdb_00009igx
EMDB ID : EMD-52861
Title : Ku70/80 bound to 153 bp nucleosome
Authors : Hall, C.; Chaplin, A.K.
Deposited on : 2025-02-20
Resolution : 3.56 Å(reported)

This is a Full wwPDB EM Validation Report for a publicly released PDB entry.

We welcome your comments at validation@mail.wwpdb.org

A user guide is available at

<https://www.wwpdb.org/validation/2017/EMValidationReportHelp>

with specific help available everywhere you see the ⓘ symbol.

The types of validation reports are described at

<http://www.wwpdb.org/validation/2017/FAQs#types>.

The following versions of software and data (see [references ⓘ](#)) were used in the production of this report:

EMDB validation analysis : 0.0.1.dev132
MolProbity : 4-5-2 with Phenix2.0
Percentile statistics : 20250101.v01 (using entries in the PDB archive January 1st 2025)
EM percentile statistics : 202505.v01 (Using data in the EMDB archive up until May 2025)
MapQ : 1.9.13
Ideal geometry (proteins) : Engh & Huber (2001)
Ideal geometry (DNA, RNA) : Parkinson et al. (1996)
Validation Pipeline (wwPDB-VP) : 2.49

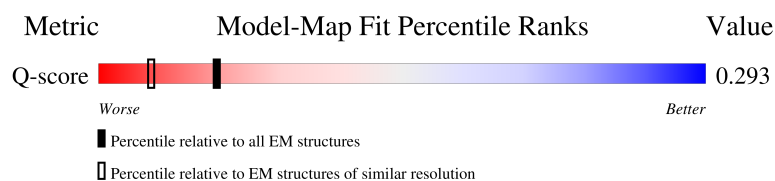
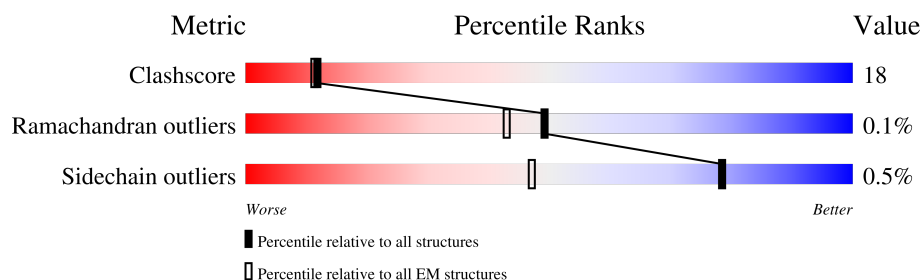
1 Overall quality at a glance

The following experimental techniques were used to determine the structure:

ELECTRON MICROSCOPY

The reported resolution of this entry is 3.56 Å.

Percentile scores (ranging between 0-100) for global validation metrics of the entry are shown in the following graphic. The table shows the number of entries on which the scores are based.













Metric	Whole archive (#Entries)	EM structures (#Entries)	Similar EM resolution (#Entries, resolution range(Å))
Clashscore	229148	23984	-
Ramachandran outliers	224038	23583	-
Sidechain outliers	223484	23102	-
Q-score	-	25397	12750 (3.06 - 4.06)

The table below summarises the geometric issues observed across the polymeric chains and their fit to the map. The red, orange, yellow and green segments of the bar indicate the fraction of residues that contain outliers for ≥ 3 , 2, 1 and 0 types of geometric quality criteria respectively. A grey segment represents the fraction of residues that are not modelled. The numeric value for each fraction is indicated below the corresponding segment, with a dot representing fractions $\leq 5\%$. The upper red bar (where present) indicates the fraction of residues that have poor fit to the EM map (all-atom inclusion $< 40\%$). The numeric value is given above the bar.

Mol	Chain	Length	Quality of chain
1	K	501	
2	L	540	
2	N	540	
3	C	110	

Continued on next page...

Continued from previous page...

Mol	Chain	Length	Quality of chain
3	G	110	 66%31%. .
4	D	97	 72%28%
4	H	97	 64%35%. .
5	A	97	 71%28%. .
5	E	97	 65%33%..
6	B	84	 70%29%. .
6	F	84	 61%33%. 5%
7	M	501	 57%67%31%. .
8	I	153	 33%65%. .
9	J	153	 37%61%. .

2 Entry composition [i](#)

There are 9 unique types of molecules in this entry. The entry contains 27719 atoms, of which 0 are hydrogens and 0 are deuteriums.

In the tables below, the AltConf column contains the number of residues with at least one atom in alternate conformation and the Trace column contains the number of residues modelled with at most 2 atoms.

- Molecule 1 is a protein called X-ray repair cross-complementing protein 6.

Mol	Chain	Residues	Atoms					AltConf	Trace
1	K	500	Total	C	N	O	S	0	0
			3768	2395	629	731	13		

There is a discrepancy between the modelled and reference sequences:

Chain	Residue	Modelled	Actual	Comment	Reference
K	502	ALA	GLN	conflict	UNP P12956

- Molecule 2 is a protein called X-ray repair cross-complementing protein 5.

Mol	Chain	Residues	Atoms					AltConf	Trace
2	L	524	Total	C	N	O	S	0	0
			3947	2511	662	757	17		
2	N	516	Total	C	N	O	S	0	0
			4028	2572	676	761	19		

- Molecule 3 is a protein called Histone H2A type 1-B/E.

Mol	Chain	Residues	Atoms					AltConf	Trace
3	C	110	Total	C	N	O		0	0
			843	530	166	147			
3	G	107	Total	C	N	O		0	0
			820	517	160	143			

- Molecule 4 is a protein called Histone H2B type 1-J.

Mol	Chain	Residues	Atoms					AltConf	Trace
4	D	97	Total	C	N	O	S	0	0
			762	478	142	140	2		
4	H	97	Total	C	N	O	S	0	0
			766	480	142	142	2		

- Molecule 5 is a protein called Histone H3.1.

Mol	Chain	Residues	Atoms					AltConf	Trace
5	E	96	Total	C	N	O	S	0	0
			778	487	154	133	4		
5	A	96	Total	C	N	O	S	0	0
			785	496	149	136	4		

- Molecule 6 is a protein called Histone H4.

Mol	Chain	Residues	Atoms					AltConf	Trace
6	F	80	Total	C	N	O		0	0
			636	403	122	111			
6	B	84	Total	C	N	O	S	0	0
			676	426	134	115	1		

- Molecule 7 is a protein called X-ray repair cross-complementing protein 6.

Mol	Chain	Residues	Atoms					AltConf	Trace
7	M	490	Total	C	N	O	S	0	0
			3804	2429	635	726	14		

- Molecule 8 is a DNA chain called 153 bp DNA.

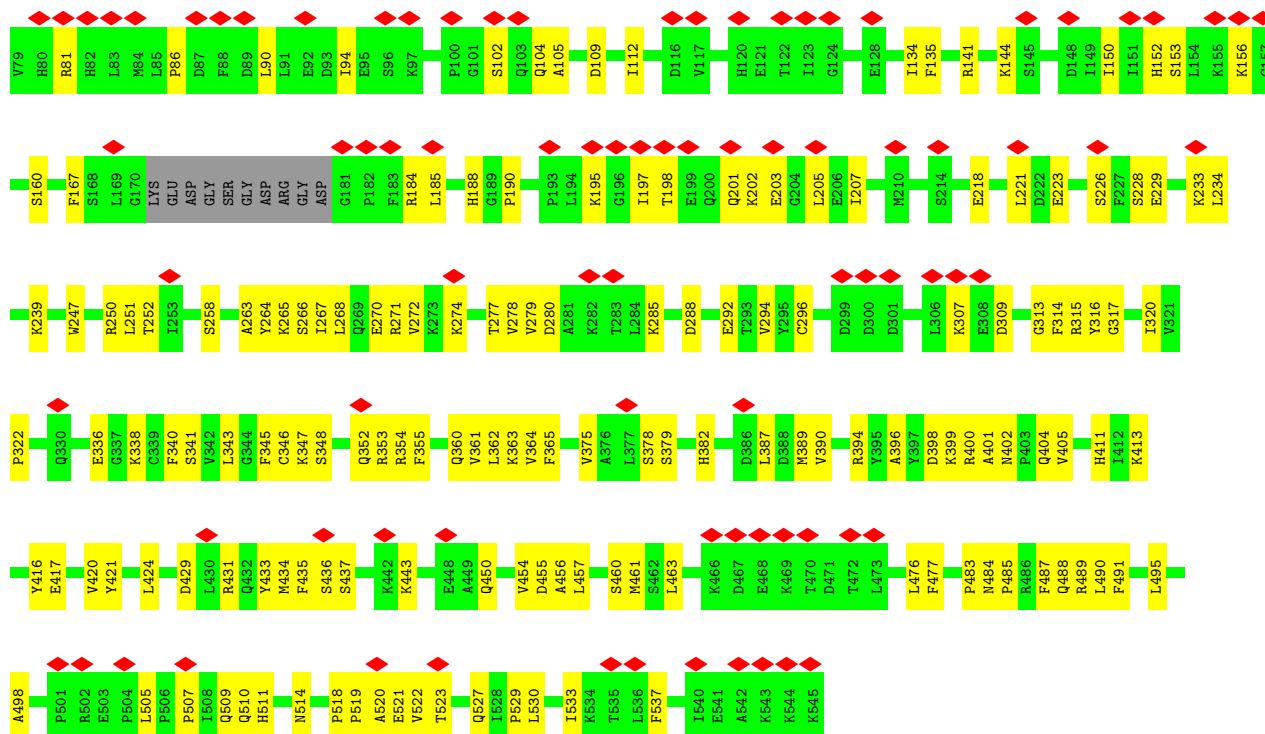
Mol	Chain	Residues	Atoms					AltConf	Trace
8	I	149	Total	C	N	O	P	0	0
			3037	1442	550	896	149		

- Molecule 9 is a DNA chain called 153 bp DNA.

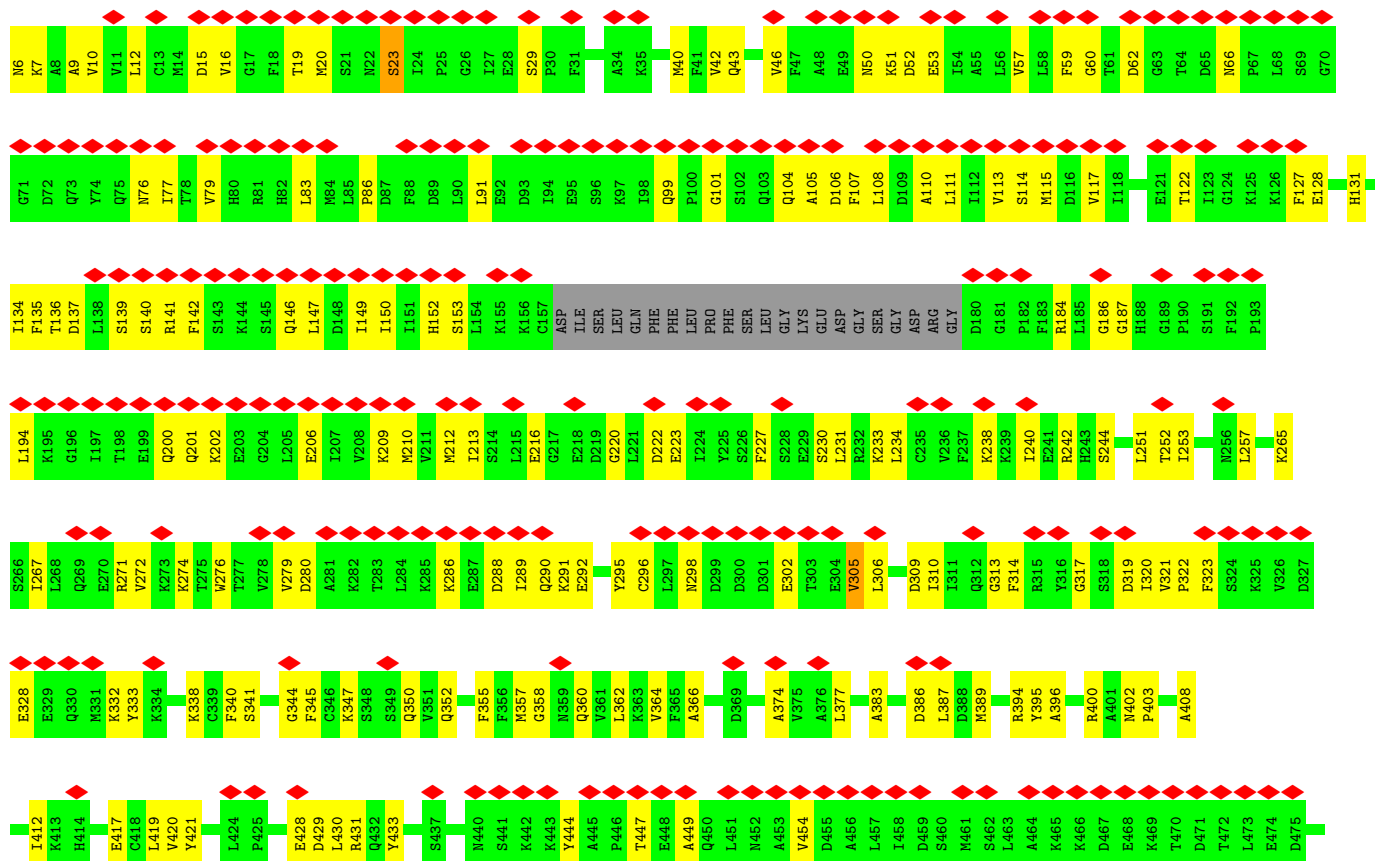
Mol	Chain	Residues	Atoms					AltConf	Trace
9	J	149	Total	C	N	O	P	0	0
			3069	1453	578	890	148		

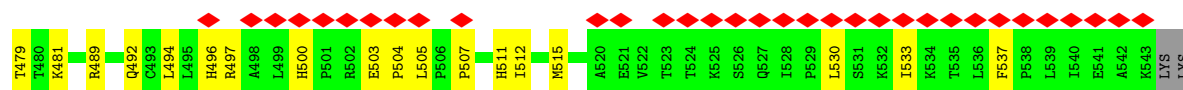
- Molecule 1: X-ray repair cross-complementing protein 6



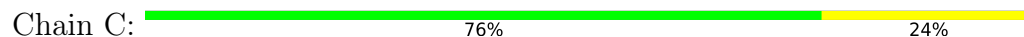


• Molecule 2: X-ray repair cross-complementing protein 5





- Molecule 3: Histone H2A type 1-B/E



- Molecule 3: Histone H2A type 1-B/E



THR

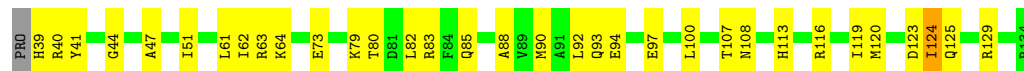
- Molecule 4: Histone H2B type 1-J



- Molecule 4: Histone H2B type 1-J



- Molecule 5: Histone H3.1



- Molecule 5: Histone H3.1



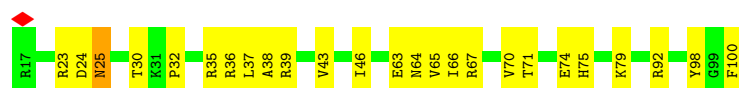
- Molecule 6: Histone H4

Chain F: 



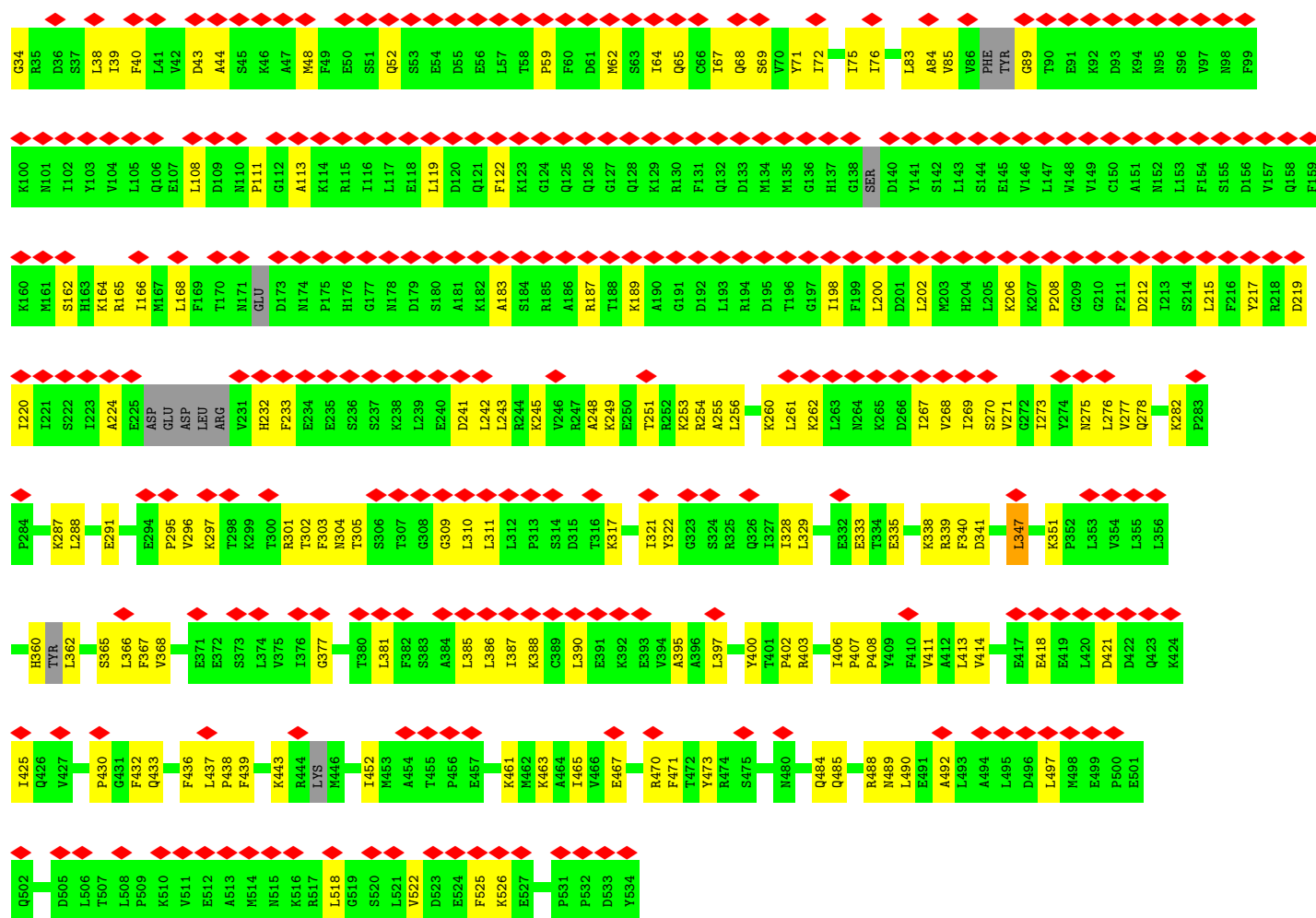
- Molecule 6: Histone H4

Chain B: 



- Molecule 7: X-ray repair cross-complementing protein 6

Chain M: 

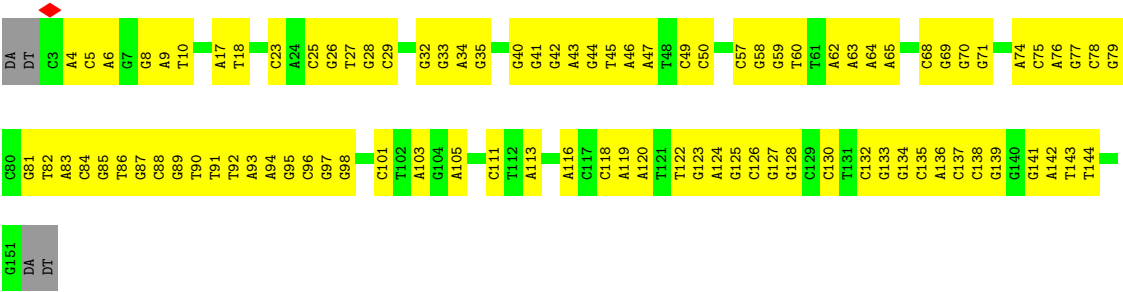


- Molecule 8: 153 bp DNA

Chain I: 



● Molecule 9: 153 bp DNA



4 Experimental information

Property	Value	Source
EM reconstruction method	SINGLE PARTICLE	Depositor
Imposed symmetry	POINT, Not provided	
Number of particles used	24500	Depositor
Resolution determination method	FSC 0.143 CUT-OFF	Depositor
CTF correction method	PHASE FLIPPING AND AMPLITUDE CORRECTION	Depositor
Microscope	TFS KRIOS	Depositor
Voltage (kV)	300	Depositor
Electron dose ($e^-/\text{\AA}^2$)	50.01	Depositor
Minimum defocus (nm)	700	Depositor
Maximum defocus (nm)	2200	Depositor
Magnification	105000	Depositor
Image detector	GATAN K3 (6k x 4k)	Depositor
Maximum map value	0.409	Depositor
Minimum map value	-0.160	Depositor
Average map value	0.000	Depositor
Map value standard deviation	0.010	Depositor
Recommended contour level	0.06	Depositor
Map size (Å)	395.52, 395.52, 395.52	wwPDB
Map dimensions	480, 480, 480	wwPDB
Map angles (°)	90.0, 90.0, 90.0	wwPDB
Pixel spacing (Å)	0.824, 0.824, 0.824	Depositor

5 Model quality [i](#)

5.1 Standard geometry [i](#)

The Z score for a bond length (or angle) is the number of standard deviations the observed value is removed from the expected value. A bond length (or angle) with $|Z| > 5$ is considered an outlier worth inspection. RMSZ is the root-mean-square of all Z scores of the bond lengths (or angles).

Mol	Chain	Bond lengths		Bond angles	
		RMSZ	# Z >5	RMSZ	# Z >5
1	K	0.10	0/3833	0.32	0/5199
2	L	0.10	0/4025	0.29	0/5465
2	N	0.09	0/4105	0.28	0/5551
3	C	0.14	0/853	0.32	0/1152
3	G	0.15	0/830	0.35	0/1121
4	D	0.14	0/773	0.32	0/1035
4	H	0.16	0/777	0.37	0/1040
5	A	0.16	0/796	0.32	0/1068
5	E	0.19	0/788	0.44	0/1056
6	B	0.18	0/684	0.42	0/916
6	F	0.25	0/643	0.41	0/863
7	M	0.08	0/3869	0.24	0/5227
8	I	0.21	0/3402	0.38	0/5244
9	J	0.21	0/3447	0.39	0/5323
All	All	0.15	0/28825	0.33	0/40260

There are no bond length outliers.

There are no bond angle outliers.

There are no chirality outliers.

There are no planarity outliers.

5.2 Too-close contacts [i](#)

In the following table, the Non-H and H(model) columns list the number of non-hydrogen atoms and hydrogen atoms in the chain respectively. The H(added) column lists the number of hydrogen atoms added and optimized by MolProbity. The Clashes column lists the number of clashes within the asymmetric unit, whereas Symm-Clashes lists symmetry-related clashes.

Mol	Chain	Non-H	H(model)	H(added)	Clashes	Symm-Clashes
1	K	3768	0	3654	173	0
2	L	3947	0	3752	153	0

Continued on next page...

Continued from previous page...

Mol	Chain	Non-H	H(model)	H(added)	Clashes	Symm-Clashes
2	N	4028	0	4011	156	0
3	C	843	0	895	29	0
3	G	820	0	873	32	0
4	D	762	0	793	25	0
4	H	766	0	797	33	0
5	A	785	0	821	24	0
5	E	778	0	807	29	0
6	B	676	0	714	26	0
6	F	636	0	672	31	0
7	M	3804	0	3761	128	0
8	I	3037	0	1673	109	0
9	J	3069	0	1672	100	0
All	All	27719	0	24895	841	0

The all-atom clashscore is defined as the number of clashes found per 1000 atoms (including hydrogen atoms). The all-atom clashscore for this structure is 18.

All (841) close contacts within the same asymmetric unit are listed below, sorted by their clash magnitude.

Atom-1	Atom-2	Interatomic distance (Å)	Clash overlap (Å)
2:L:315:ARG:HB2	2:L:320:ILE:HG12	1.50	0.90
6:B:25:ASN:N	6:B:25:ASN:HD22	1.72	0.88
3:G:79:ILE:HD12	3:G:80:PRO:HD2	1.54	0.87
2:N:338:LYS:HA	2:N:396:ALA:O	1.82	0.80
2:L:104:GLN:HB2	2:L:141:ARG:H	1.47	0.80
2:N:364:VAL:HB	2:N:419:LEU:HB3	1.63	0.78
8:I:72:DA:H61	9:J:81:DG:H1	1.32	0.76
7:M:276:LEU:H	7:M:366:LEU:HD12	1.51	0.76
8:I:86:DG:H1	9:J:68:DC:H42	1.34	0.76
1:K:275:ASN:HA	1:K:366:LEU:HD11	1.68	0.76
1:K:200:LEU:H	1:K:222:SER:HB3	1.50	0.75
2:L:251:LEU:O	2:L:258:SER:HA	1.87	0.74
1:K:263:LEU:HD23	1:K:267:ILE:HG13	1.69	0.73
2:L:362:LEU:HB2	2:L:421:TYR:HB3	1.68	0.73
2:L:394:ARG:HA	2:L:405:VAL:HA	1.71	0.72
5:E:79:LYS:HB3	5:E:82:LEU:HD21	1.71	0.72
2:L:434:MET:HA	2:L:434:MET:HE3	1.70	0.72
6:B:25:ASN:N	6:B:25:ASN:ND2	2.36	0.71
3:G:65:LEU:HB3	3:G:86:ALA:HB1	1.72	0.70
7:M:470:ARG:NH1	2:N:389:MET:SD	2.65	0.70
9:J:75:DC:H2"	9:J:76:DA:N7	2.07	0.69

Continued on next page...

Continued from previous page...

Atom-1	Atom-2	Interatomic distance (Å)	Clash overlap (Å)
7:M:362:LEU:N	2:N:358:GLY:O	2.26	0.69
1:K:77:SER:HB3	2:L:431:ARG:HH22	1.58	0.68
1:K:288:LEU:HD11	2:L:320:ILE:HG22	1.75	0.68
1:K:244:ARG:O	1:K:244:ARG:NH1	2.24	0.68
6:F:34:ILE:HG12	6:F:54:THR:HG21	1.76	0.68
4:D:99:LEU:HD12	4:D:104:ALA:HA	1.74	0.67
1:K:242:LEU:HA	1:K:245:LYS:HD2	1.75	0.67
2:L:347:LYS:HD2	2:L:389:MET:HG3	1.77	0.67
7:M:267:ILE:HD12	2:N:530:LEU:HG	1.75	0.67
1:K:304:ASN:O	1:K:308:GLY:N	2.27	0.67
1:K:490:LEU:HD21	2:L:314:PHE:HB2	1.77	0.67
8:I:15:DC:O2	9:J:139:DG:N2	2.28	0.67
2:N:497:ARG:HH22	2:N:505:LEU:HA	1.59	0.66
2:L:343:LEU:HD21	2:L:394:ARG:HD2	1.77	0.66
9:J:91:DT:H2''	9:J:92:DT:H5''	1.75	0.66
1:K:260:LYS:HA	1:K:270:SER:HA	1.76	0.66
2:N:108:LEU:HD13	2:N:142:PHE:HE1	1.60	0.66
7:M:328:ILE:HD12	2:N:279:VAL:HG21	1.78	0.66
8:I:148:DT:H1'	8:I:149:DG:H8	1.59	0.66
9:J:93:DA:H1'	9:J:94:DA:C8	2.30	0.66
2:L:266:SER:HB2	2:L:361:VAL:HB	1.76	0.66
1:K:429:PRO:HG3	2:L:435:PHE:HB2	1.77	0.66
6:F:44:LYS:HG2	6:F:45:ARG:HG3	1.77	0.65
8:I:45:DC:N3	8:I:46:DA:N6	2.44	0.65
4:D:45:VAL:O	4:D:46:HIS:ND1	2.27	0.65
8:I:104:DG:H2'	8:I:105:DG:C8	2.31	0.65
2:N:252:THR:HB	2:N:341:SER:HA	1.78	0.65
2:N:15:ASP:HB2	2:N:136:THR:HG22	1.77	0.65
2:L:338:LYS:HA	2:L:396:ALA:O	1.97	0.64
8:I:50:DC:H2''	8:I:51:DT:H72	1.79	0.64
7:M:463:LYS:HE2	2:N:387:LEU:HB2	1.79	0.64
1:K:483:LEU:O	1:K:486:HIS:ND1	2.29	0.64
5:A:116:ARG:NH2	5:A:123:ASP:OD2	2.30	0.64
2:L:223:GLU:OE2	2:L:239:LYS:NZ	2.30	0.64
4:D:38:VAL:HG21	4:D:59:MET:HG2	1.79	0.64
9:J:82:DT:H2''	9:J:83:DA:C8	2.33	0.64
3:C:92:GLU:HG2	4:D:103:LEU:HD12	1.80	0.64
8:I:17:DG:H2''	8:I:18:DT:H5'	1.80	0.64
1:K:286:ILE:HG21	2:L:320:ILE:HD13	1.79	0.63
9:J:88:DC:H4'	9:J:89:DG:H5'	1.78	0.63
7:M:321:ILE:H	2:N:274:LYS:HE3	1.63	0.63

Continued on next page...

Continued from previous page...

Atom-1	Atom-2	Interatomic distance (Å)	Clash overlap (Å)
3:C:20:ARG:NE	4:D:122:LYS:O	2.28	0.63
7:M:287:LYS:NZ	7:M:296:VAL:O	2.31	0.63
2:L:400:ARG:NH2	9:J:143:DT:O2	2.30	0.63
7:M:526:LYS:HG2	2:N:257:LEU:HD13	1.81	0.63
1:K:419:GLU:HB2	1:K:427:VAL:HB	1.81	0.62
5:E:123:ASP:O	5:E:124:ILE:C	2.42	0.62
2:N:107:PHE:HA	2:N:111:LEU:HB2	1.81	0.62
3:C:32:ARG:NH1	8:I:33:DA:OP1	2.31	0.62
8:I:9:DG:H1	9:J:144:DT:H3	1.47	0.62
4:H:26:ARG:N	8:I:128:DC:OP1	2.33	0.62
2:N:186:GLY:HA3	2:N:511:HIS:HB2	1.81	0.62
3:G:17:ARG:NH1	9:J:34:DA:OP2	2.32	0.62
2:L:454:VAL:HA	2:L:457:LEU:HD12	1.81	0.62
7:M:492:ALA:HA	7:M:497:LEU:HD13	1.81	0.62
2:L:29:SER:O	2:L:32:GLU:N	2.33	0.62
1:K:469:LEU:HD13	2:L:345:PHE:HE1	1.63	0.62
1:K:465:ILE:HA	1:K:518:LEU:HD21	1.80	0.62
1:K:317:LYS:NZ	2:L:279:VAL:O	2.33	0.61
1:K:202:LEU:HB3	1:K:221:ILE:HG12	1.83	0.61
2:N:23:SER:HB2	2:N:29:SER:HB3	1.82	0.61
1:K:42:VAL:HG22	1:K:169:PHE:HD2	1.66	0.61
2:L:247:TRP:HB3	2:L:263:ALA:HB3	1.83	0.61
1:K:490:LEU:HB3	2:L:316:TYR:HB2	1.81	0.61
9:J:69:DG:H2''	9:J:70:DG:C8	2.36	0.61
2:N:408:ALA:HA	2:N:420:VAL:O	2.01	0.61
1:K:35:ARG:NH1	1:K:80:ARG:O	2.29	0.60
2:L:12:LEU:HD11	2:L:38:ILE:HB	1.83	0.60
7:M:411:VAL:HG12	7:M:436:PHE:HA	1.83	0.60
2:N:137:ASP:O	2:N:201:GLN:NE2	2.30	0.60
1:K:259:LEU:HD11	1:K:402:PRO:HA	1.83	0.60
2:L:42:VAL:HG13	2:L:90:LEU:HD23	1.81	0.60
6:B:25:ASN:HD22	6:B:25:ASN:H	1.49	0.60
7:M:254:ARG:NH1	7:M:255:ALA:O	2.35	0.60
8:I:100:DA:H1'	8:I:101:DA:H5'	1.84	0.60
1:K:320:GLN:HB3	1:K:329:LEU:HD12	1.82	0.60
1:K:451:LYS:HE3	2:L:417:GLU:HB3	1.84	0.60
3:C:11:ARG:N	8:I:35:DT:O3'	2.35	0.60
5:A:67:PHE:O	5:A:71:VAL:HG12	2.00	0.60
5:A:106:ASP:OD2	5:A:131:ARG:NH2	2.34	0.60
2:L:352:GLN:HG3	2:L:354:ARG:H	1.67	0.60
2:N:46:VAL:HG12	2:N:86:PRO:HB2	1.84	0.60

Continued on next page...

Continued from previous page...

Atom-1	Atom-2	Interatomic distance (Å)	Clash overlap (Å)
2:N:251:LEU:HA	2:N:340:PHE:HB3	1.84	0.59
5:A:46:VAL:O	5:A:49:ARG:N	2.35	0.59
1:K:427:VAL:HG12	1:K:428:THR:H	1.67	0.59
1:K:244:ARG:HH22	2:L:434:MET:HE1	1.66	0.59
1:K:269:ILE:HG21	1:K:381:LEU:HD23	1.84	0.59
7:M:183:ALA:O	7:M:187:ARG:HG2	2.03	0.59
2:N:6:ASN:N	2:N:128:GLU:OE1	2.35	0.59
2:N:253:ILE:HD11	2:N:345:PHE:HE1	1.66	0.59
1:K:142:SER:HB2	1:K:145:GLU:HB2	1.83	0.59
2:N:108:LEU:HB3	2:N:146:GLN:HB2	1.85	0.59
5:E:108:ASN:HB2	6:F:43:VAL:HG12	1.85	0.59
8:I:73:DC:H2'	8:I:74:DG:C8	2.38	0.59
5:A:119:ILE:HD11	6:B:46:ILE:HG12	1.83	0.58
1:K:179:ASP:OD2	1:K:182:LYS:NZ	2.29	0.58
1:K:375:VAL:HB	1:K:378:SER:HB3	1.84	0.58
3:C:75:LYS:NZ	9:J:135:DC:OP1	2.34	0.58
2:N:57:VAL:HG22	2:N:79:VAL:HA	1.85	0.58
2:N:184:ARG:HG2	2:N:187:GLY:HA3	1.84	0.58
9:J:85:DG:H2''	9:J:86:DT:C6	2.38	0.58
1:K:352:PRO:HA	1:K:394:VAL:HA	1.86	0.58
2:N:62:ASP:OD2	2:N:99:GLN:NE2	2.37	0.58
2:N:140:SER:O	2:N:200:GLN:NE2	2.36	0.58
2:N:347:LYS:HE3	2:N:389:MET:HG2	1.85	0.58
2:L:21:SER:HB3	2:L:31:PHE:HD2	1.68	0.58
2:L:102:SER:O	2:L:104:GLN:NE2	2.32	0.58
7:M:485:GLN:NE2	7:M:489:ASN:OD1	2.36	0.58
2:N:20:MET:HE2	2:N:137:ASP:H	1.67	0.58
8:I:151:DG:N2	9:J:4:DA:O4'	2.37	0.58
2:L:398:ASP:H	2:L:401:ALA:HB3	1.69	0.58
2:N:15:ASP:HB3	2:N:20:MET:HE3	1.86	0.58
2:N:492:GLN:NE2	2:N:507:PRO:O	2.37	0.58
4:D:26:ARG:HH11	9:J:50:DC:H5'	1.69	0.57
4:H:29:SER:OG	4:H:31:LYS:NZ	2.37	0.57
5:A:83:ARG:NH2	9:J:103:DA:O3'	2.37	0.57
7:M:518:LEU:HD22	7:M:522:VAL:HB	1.86	0.57
7:M:335:GLU:HA	7:M:338:LYS:HB2	1.85	0.57
2:L:457:LEU:HG	2:L:529:PRO:HB2	1.86	0.57
7:M:262:LYS:HA	7:M:268:VAL:HG12	1.85	0.57
2:N:352:GLN:H	2:N:355:PHE:HD2	1.52	0.57
2:L:43:GLN:HE21	2:L:495:LEU:HD13	1.68	0.57
4:H:33:SER:HB3	4:H:60:ASN:HD21	1.70	0.57

Continued on next page...

Continued from previous page...

Atom-1	Atom-2	Interatomic distance (Å)	Clash overlap (Å)
2:N:206:GLU:HA	2:N:209:LYS:HD3	1.86	0.57
2:L:12:LEU:HB2	2:L:54:ILE:HD11	1.87	0.57
6:B:30:THR:HG21	8:I:64:DA:H5''	1.87	0.57
7:M:288:LEU:HD21	2:N:320:ILE:HG21	1.87	0.57
9:J:9:DA:H2''	9:J:10:DT:H5'	1.85	0.57
6:B:25:ASN:ND2	6:B:25:ASN:H	2.02	0.57
1:K:297:LYS:N	2:L:296:CYS:O	2.37	0.57
3:C:40:SER:OG	3:C:42:ARG:O	2.22	0.57
8:I:74:DG:H2'	8:I:75:DC:C6	2.40	0.57
9:J:84:DC:H2''	9:J:85:DG:H5''	1.87	0.57
8:I:8:DA:H2''	8:I:9:DG:C8	2.40	0.56
3:C:11:ARG:NH1	8:I:35:DT:O2	2.38	0.56
7:M:72:ILE:O	7:M:76:ILE:HG12	2.04	0.56
9:J:74:DA:H5'	9:J:74:DA:H8	1.70	0.56
9:J:76:DA:H2''	9:J:77:DG:N7	2.20	0.56
2:L:264:TYR:O	2:L:363:LYS:N	2.37	0.56
7:M:295:PRO:O	2:N:298:ASN:ND2	2.35	0.56
2:N:108:LEU:HG	2:N:147:LEU:HA	1.88	0.56
3:G:85:LEU:O	3:G:89:ASN:HB2	2.06	0.56
7:M:303:PHE:HA	7:M:310:LEU:HA	1.88	0.56
7:M:329:LEU:HB3	7:M:333:GLU:HB3	1.87	0.56
7:M:490:LEU:HD22	2:N:321:VAL:HB	1.87	0.56
2:N:19:THR:OG1	2:N:137:ASP:OD2	2.24	0.56
2:N:242:ARG:NH1	2:N:244:SER:OG	2.33	0.56
1:K:90:THR:O	1:K:101:ASN:ND2	2.36	0.56
1:K:62:MET:HB2	1:K:239:LEU:HD13	1.88	0.56
1:K:181:ALA:O	1:K:185:ARG:HG2	2.05	0.56
3:G:84:GLN:OE1	3:G:88:ARG:NH1	2.39	0.56
7:M:340:PHE:CZ	2:N:489:ARG:HB2	2.41	0.56
4:H:73:GLU:OE1	4:H:76:ARG:NH2	2.39	0.56
2:N:194:LEU:O	2:N:202:LYS:NZ	2.36	0.56
6:F:73:THR:OG1	6:F:85:ASP:OD2	2.23	0.55
1:K:214:SER:OG	1:K:215:LEU:N	2.38	0.55
8:I:127:DA:H61	9:J:27:DT:H3	1.53	0.55
5:E:39:HIS:O	5:E:41:TYR:N	2.39	0.55
2:N:496:HIS:O	2:N:500:HIS:ND1	2.38	0.55
8:I:113:DC:H42	9:J:41:DG:H1	1.52	0.55
2:L:12:LEU:HG	2:L:135:PHE:HE2	1.72	0.55
6:F:75:HIS:HE1	4:H:90:GLU:HA	1.71	0.55
3:G:78:ILE:HB	4:H:51:ILE:HD13	1.88	0.55
7:M:113:ALA:N	2:N:319:ASP:OD2	2.40	0.55

Continued on next page...

Continued from previous page...

Atom-1	Atom-2	Interatomic distance (Å)	Clash overlap (Å)
2:L:202:LYS:HA	2:L:205:LEU:HD12	1.87	0.55
4:H:65:ASP:OD2	6:B:98:TYR:OH	2.21	0.55
3:C:20:ARG:O	4:D:117:LYS:NZ	2.39	0.55
7:M:287:LYS:HB3	2:N:310:ILE:HG23	1.89	0.55
7:M:317:LYS:HB2	2:N:279:VAL:HG23	1.88	0.55
9:J:87:DG:H4'	9:J:88:DC:OP1	2.05	0.55
1:K:526:LYS:HE3	1:K:530:TYR:HB2	1.88	0.55
2:L:336:GLU:OE1	2:L:394:ARG:NH1	2.35	0.55
7:M:48:MET:HE3	7:M:52:GLN:HE22	1.72	0.55
8:I:31:DC:H2''	8:I:32:DA:C8	2.42	0.55
1:K:348:MET:SD	1:K:348:MET:N	2.78	0.55
6:B:35:ARG:NH2	9:J:84:DC:OP2	2.39	0.55
2:N:62:ASP:N	2:N:62:ASP:OD1	2.38	0.55
2:L:59:PHE:HB3	2:L:77:ILE:HG23	1.89	0.55
7:M:62:MET:HE3	7:M:242:LEU:HD22	1.89	0.55
8:I:53:DG:H1	9:J:101:DC:H42	1.53	0.55
7:M:463:LYS:HZ1	2:N:386:ASP:HB2	1.72	0.54
7:M:402:PRO:HD2	7:M:406:ILE:HG21	1.89	0.54
6:F:82:THR:OG1	6:F:83:ALA:N	2.40	0.54
2:N:50:ASN:ND2	2:N:52:ASP:OD2	2.41	0.54
9:J:86:DT:H2''	9:J:87:DG:H5'	1.89	0.54
3:C:20:ARG:NH1	8:I:35:DT:OP1	2.32	0.54
1:K:301:ARG:NH1	2:L:292:GLU:OE1	2.41	0.54
4:D:75:SER:HA	4:D:86:ILE:HD11	1.90	0.54
4:H:113:LYS:O	4:H:116:THR:OG1	2.20	0.54
7:M:241:ASP:OD1	7:M:241:ASP:N	2.39	0.54
3:C:17:ARG:HG2	4:D:118:TYR:HE2	1.72	0.54
2:N:149:ILE:HA	2:N:152:HIS:CD2	2.43	0.54
4:H:38:VAL:HG21	4:H:59:MET:HG2	1.90	0.54
2:N:305:VAL:HB	2:N:309:ASP:HB2	1.90	0.54
8:I:57:DC:O2	9:J:98:DG:N2	2.41	0.54
8:I:91:DT:O4	9:J:62:DA:N6	2.40	0.54
5:E:44:GLY:O	5:E:47:ALA:N	2.40	0.54
2:N:135:PHE:HB3	2:N:227:PHE:HZ	1.71	0.54
1:K:388:LYS:HG3	2:L:454:VAL:HB	1.90	0.54
2:L:144:LYS:HE2	2:L:207:ILE:HG21	1.88	0.54
2:L:218:GLU:HA	2:L:221:LEU:HB3	1.89	0.54
6:F:85:ASP:OD1	6:F:85:ASP:N	2.35	0.54
5:A:57:SER:OG	5:A:59:GLU:OE1	2.24	0.54
1:K:169:PHE:HD1	1:K:203:MET:HB3	1.72	0.53
1:K:277:VAL:HG22	2:L:429:ASP:HB3	1.89	0.53

Continued on next page...

Continued from previous page...

Atom-1	Atom-2	Interatomic distance (Å)	Clash overlap (Å)
2:L:401:ALA:HB2	9:J:143:DT:H5''	1.90	0.53
7:M:251:THR:OG1	7:M:253:LYS:NZ	2.38	0.53
7:M:362:LEU:HD21	7:M:436:PHE:HB2	1.89	0.53
9:J:93:DA:H4'	9:J:94:DA:H5'	1.89	0.53
1:K:518:LEU:HD13	1:K:522:VAL:HG13	1.90	0.53
2:L:74:TYR:HA	2:L:109:ASP:HB3	1.89	0.53
5:E:107:THR:CG2	5:E:124:ILE:HA	2.37	0.53
3:G:77:ARG:HH12	9:J:23:DC:H4'	1.73	0.53
7:M:360:HIS:CG	7:M:438:PRO:HG3	2.43	0.53
2:L:13:CYS:HB3	2:L:134:ILE:HD13	1.91	0.53
7:M:38:LEU:HD21	7:M:165:ARG:HB3	1.91	0.53
2:N:7:LYS:HE2	2:N:51:LYS:HB3	1.90	0.53
8:I:56:DC:H2''	8:I:57:DC:C6	2.43	0.53
7:M:40:PHE:HD2	7:M:85:VAL:HG23	1.73	0.53
9:J:4:DA:N3	9:J:5:DC:N4	2.48	0.53
2:N:10:VAL:HG22	2:N:240:ILE:HG21	1.91	0.53
8:I:138:DA:H2''	8:I:139:DT:H5'	1.90	0.53
1:K:266:ASP:HB3	2:L:530:LEU:HD11	1.91	0.53
8:I:55:DA:C8	8:I:55:DA:H5'	2.42	0.53
1:K:235:GLU:O	1:K:423:GLN:NE2	2.36	0.53
1:K:276:LEU:H	1:K:366:LEU:HD11	1.74	0.53
2:L:112:ILE:HG12	2:L:150:ILE:HD13	1.91	0.53
2:L:190:PRO:O	2:L:228:SER:OG	2.23	0.53
2:N:15:ASP:OD2	2:N:139:SER:OG	2.27	0.53
2:N:134:ILE:HG22	2:N:136:THR:HG23	1.90	0.53
2:N:271:ARG:HG2	2:N:272:VAL:HG23	1.90	0.53
8:I:56:DC:O2	9:J:98:DG:N2	2.39	0.53
1:K:264:ASN:ND2	2:L:527:GLN:OE1	2.42	0.53
5:E:61:LEU:O	6:F:36:ARG:NH1	2.42	0.53
2:N:234:LEU:HD23	2:N:481:LYS:HG2	1.91	0.53
1:K:350:PHE:HB3	1:K:394:VAL:HG11	1.90	0.53
1:K:461:LYS:HB3	1:K:525:PHE:HD2	1.74	0.53
2:N:279:VAL:HG12	2:N:286:LYS:HG2	1.91	0.53
8:I:122:DC:H2''	8:I:123:DA:C8	2.43	0.53
1:K:475:SER:O	1:K:475:SER:OG	2.25	0.52
8:I:38:DT:H3	9:J:116:DA:H61	1.57	0.52
2:L:489:ARG:NH2	2:L:507:PRO:O	2.42	0.52
3:G:22:GLY:H	3:G:23:LEU:HD12	1.74	0.52
7:M:278:GLN:N	2:N:429:ASP:O	2.38	0.52
1:K:168:LEU:HB2	1:K:202:LEU:HA	1.91	0.52
3:G:77:ARG:HH22	9:J:23:DC:H4'	1.74	0.52

Continued on next page...

Continued from previous page...

Atom-1	Atom-2	Interatomic distance (Å)	Clash overlap (Å)
1:K:59:PRO:HB3	1:K:205:LEU:HB3	1.90	0.52
1:K:144:SER:OG	1:K:182:LYS:O	2.28	0.52
1:K:445:LYS:HE3	2:L:365:PHE:HZ	1.75	0.52
5:E:90:MET:HE2	5:E:90:MET:HA	1.91	0.52
9:J:122:DT:H2''	9:J:123:DG:N7	2.25	0.52
7:M:414:VAL:HG23	7:M:433:GLN:HB3	1.90	0.52
1:K:245:LYS:HE2	1:K:425:ILE:HG12	1.92	0.52
5:A:91:ALA:HB2	6:B:100:PHE:CD2	2.44	0.52
7:M:385:LEU:HD23	2:N:454:VAL:HG13	1.92	0.52
2:N:46:VAL:HG21	2:N:91:LEU:HD11	1.91	0.52
8:I:28:DG:H4'	8:I:29:DC:OP1	2.10	0.52
1:K:130:ARG:O	1:K:134:MET:HG3	2.10	0.52
3:C:39:TYR:HB3	4:D:75:SER:HB2	1.90	0.52
2:N:272:VAL:HG12	2:N:274:LYS:H	1.74	0.52
8:I:63:DA:H2''	8:I:64:DA:C8	2.45	0.52
2:L:188:HIS:HB2	2:L:519:PRO:HG3	1.92	0.52
2:L:271:ARG:NH1	8:I:7:DG:O5'	2.43	0.52
4:D:28:ARG:HE	9:J:127:DG:H4'	1.75	0.52
8:I:7:DG:H2''	8:I:8:DA:H5'	1.92	0.52
1:K:371:GLU:O	1:K:378:SER:OG	2.24	0.51
7:M:465:ILE:HD12	7:M:518:LEU:HD23	1.90	0.51
1:K:351:LYS:HD3	2:L:463:LEU:HB2	1.92	0.51
1:K:179:ASP:OD1	1:K:179:ASP:N	2.38	0.51
1:K:319:SER:N	2:L:277:THR:O	2.43	0.51
1:K:397:LEU:HD11	1:K:437:LEU:HD22	1.91	0.51
2:L:265:LYS:HE2	2:L:360:GLN:HB2	1.91	0.51
5:E:124:ILE:O	5:E:125:GLN:C	2.53	0.51
3:C:15:LYS:O	3:C:20:ARG:NH1	2.43	0.51
5:A:104:PHE:HA	5:A:107:THR:HG22	1.92	0.51
2:N:212:MET:O	2:N:216:GLU:N	2.43	0.51
6:F:61:PHE:O	6:F:65:VAL:HG12	2.11	0.51
2:L:160:SER:HB2	2:L:239:LYS:HD2	1.92	0.51
2:L:234:LEU:HD21	2:L:483:PRO:HD3	1.91	0.51
5:E:116:ARG:HH12	5:E:120:MET:HG3	1.75	0.51
6:F:79:LYS:HD3	8:I:104:DG:H5'	1.91	0.51
2:N:77:ILE:HD11	2:N:111:LEU:HD23	1.92	0.51
2:N:106:ASP:H	2:N:110:ALA:HB3	1.76	0.51
8:I:134:DA:H2''	8:I:135:DG:N7	2.25	0.51
1:K:48:MET:SD	1:K:59:PRO:HB2	2.51	0.51
1:K:88:TYR:OH	1:K:170:THR:OG1	2.29	0.51
2:L:266:SER:OG	2:L:363:LYS:HG3	2.10	0.51

Continued on next page...

Continued from previous page...

Atom-1	Atom-2	Interatomic distance (Å)	Clash overlap (Å)
2:L:457:LEU:HB3	2:L:461:MET:HE1	1.93	0.51
5:E:73:GLU:HA	6:F:22:LEU:HD12	1.92	0.51
5:E:85:GLN:HB2	6:F:82:THR:HA	1.93	0.51
7:M:490:LEU:HD21	2:N:314:PHE:HB2	1.91	0.51
1:K:204:HIS:HB2	1:K:234:GLU:HA	1.92	0.51
1:K:411:VAL:HA	1:K:437:LEU:HB3	1.93	0.51
8:I:97:DG:N7	8:I:98:DC:N4	2.58	0.51
4:D:90:GLU:OE1	4:D:90:GLU:N	2.35	0.51
5:E:51:ILE:HD11	6:F:43:VAL:O	2.11	0.51
2:N:59:PHE:HA	2:N:77:ILE:HG12	1.93	0.51
1:K:416:GLN:O	1:K:430:PRO:HA	2.11	0.50
8:I:35:DT:H2''	8:I:36:DG:H5'	1.93	0.50
7:M:84:ALA:HB2	7:M:108:LEU:HA	1.93	0.50
8:I:16:DG:N2	9:J:138:DC:O2	2.44	0.50
8:I:59:DC:H2''	8:I:60:DT:C5	2.46	0.50
2:L:20:MET:HB2	2:L:31:PHE:HB2	1.92	0.50
7:M:248:ALA:O	7:M:251:THR:OG1	2.25	0.50
7:M:282:LYS:NZ	2:N:328:GLU:OE2	2.35	0.50
2:N:511:HIS:O	2:N:515:MET:HG3	2.12	0.50
8:I:54:DC:N3	8:I:55:DA:N6	2.60	0.50
1:K:145:GLU:OE1	1:K:185:ARG:NH1	2.45	0.50
4:D:73:GLU:HA	4:D:73:GLU:OE1	2.12	0.50
1:K:144:SER:OG	1:K:185:ARG:HG3	2.11	0.50
7:M:83:LEU:HD12	7:M:111:PRO:HG3	1.93	0.50
7:M:490:LEU:HD11	2:N:314:PHE:HB3	1.94	0.50
2:N:227:PHE:HA	2:N:230:SER:HB2	1.92	0.50
9:J:136:DA:H2''	9:J:137:DC:OP2	2.10	0.50
2:L:229:GLU:O	2:L:233:LYS:N	2.45	0.50
5:A:61:LEU:O	6:B:36:ARG:NH2	2.37	0.50
6:B:63:GLU:OE2	6:B:67:ARG:NH2	2.44	0.50
7:M:200:LEU:HD22	7:M:220:ILE:HG23	1.94	0.50
7:M:287:LYS:HE2	7:M:296:VAL:HB	1.94	0.50
8:I:131:DG:H4'	8:I:132:DT:OP1	2.12	0.50
1:K:35:ARG:HE	1:K:159:PHE:HB2	1.76	0.50
2:L:294:VAL:HA	2:L:307:LYS:HZ3	1.77	0.50
8:I:97:DG:H2''	8:I:98:DC:O5'	2.12	0.50
3:G:80:PRO:HD3	4:H:55:ALA:HB2	1.93	0.50
7:M:43:ASP:HB3	7:M:48:MET:HG2	1.94	0.50
7:M:438:PRO:O	2:N:479:THR:OG1	2.29	0.50
2:N:295:TYR:HD2	2:N:310:ILE:HG13	1.76	0.50
1:K:39:ILE:HG13	1:K:84:ALA:HB3	1.92	0.49

Continued on next page...

Continued from previous page...

Atom-1	Atom-2	Interatomic distance (Å)	Clash overlap (Å)
1:K:313:PRO:O	1:K:316:THR:OG1	2.30	0.49
1:K:464:ALA:O	1:K:468:LYS:HG2	2.11	0.49
2:L:144:LYS:NZ	2:L:203:GLU:OE1	2.32	0.49
3:C:72:ASP:OD1	3:C:72:ASP:N	2.44	0.49
5:A:63:ARG:NH2	9:J:95:DG:OP1	2.45	0.49
2:N:296:CYS:HB3	2:N:302:GLU:HG3	1.94	0.49
1:K:157:VAL:HG21	1:K:164:LYS:HE2	1.94	0.49
1:K:491:GLU:HB2	2:L:316:TYR:CZ	2.46	0.49
7:M:351:LYS:N	7:M:395:ALA:O	2.45	0.49
2:N:533:ILE:HA	2:N:537:PHE:HD2	1.77	0.49
2:L:42:VAL:HG11	2:L:94:ILE:HG13	1.93	0.49
3:C:77:ARG:NH1	8:I:23:DA:OP1	2.44	0.49
3:C:104:GLN:N	5:E:94:GLU:OE2	2.37	0.49
4:D:37:TYR:OH	9:J:125:DG:OP1	2.23	0.49
9:J:90:DT:H2'	9:J:91:DT:C6	2.48	0.49
9:J:119:DA:H2''	9:J:120:DA:O5'	2.12	0.49
2:L:285:LYS:HE3	2:L:288:ASP:HB3	1.94	0.49
3:G:39:TYR:O	4:H:75:SER:OG	2.24	0.49
2:N:60:GLY:N	2:N:76:ASN:O	2.44	0.49
2:N:66:ASN:OD1	2:N:77:ILE:O	2.31	0.49
6:F:43:VAL:HG21	6:F:46:ILE:HD11	1.95	0.49
7:M:339:ARG:NE	7:M:341:ASP:O	2.44	0.49
1:K:335:GLU:OE1	1:K:339:ARG:NH2	2.46	0.49
2:L:184:ARG:HH22	2:L:520:ALA:H	1.61	0.49
2:L:263:ALA:HA	2:L:364:VAL:HA	1.94	0.49
2:N:497:ARG:HH12	2:N:505:LEU:HD23	1.77	0.49
8:I:16:DG:H2'	8:I:17:DG:C8	2.47	0.49
1:K:317:LYS:H	2:L:278:VAL:HG23	1.78	0.49
2:L:152:HIS:O	2:L:156:LYS:HG3	2.12	0.49
2:L:483:PRO:HG2	2:L:488:GLN:HE21	1.77	0.49
7:M:305:THR:OG1	2:N:290:GLN:O	2.29	0.49
8:I:130:DT:H2''	8:I:131:DG:C8	2.48	0.49
7:M:219:ASP:OD1	7:M:219:ASP:N	2.46	0.49
7:M:273:ILE:HA	7:M:368:VAL:HG12	1.95	0.49
8:I:97:DG:H4'	8:I:98:DC:OP1	2.12	0.49
1:K:233:PHE:HB3	1:K:245:LYS:HD3	1.93	0.48
8:I:96:DC:H2''	8:I:97:DG:C8	2.48	0.48
7:M:256:LEU:HB2	7:M:273:ILE:HG22	1.95	0.48
7:M:301:ARG:NH2	2:N:292:GLU:OE1	2.45	0.48
4:D:98:LEU:HA	6:B:92:ARG:NH2	2.28	0.48
3:G:26:PRO:HD3	4:H:37:TYR:CG	2.48	0.48

Continued on next page...

Continued from previous page...

Atom-1	Atom-2	Interatomic distance (Å)	Clash overlap (Å)
2:N:43:GLN:HA	2:N:46:VAL:HG22	1.95	0.48
8:I:10:DA:H2''	8:I:11:DA:C8	2.47	0.48
5:E:107:THR:HG22	5:E:124:ILE:HA	1.95	0.48
7:M:164:LYS:HB3	7:M:198:ILE:HG23	1.96	0.48
1:K:444:ARG:NH1	2:L:270:GLU:OE2	2.45	0.48
1:K:322:TYR:H	2:L:274:LYS:HE2	1.78	0.48
2:L:197:ILE:HD11	2:L:201:GLN:HB3	1.96	0.48
9:J:74:DA:H5'	9:J:74:DA:C8	2.47	0.48
2:L:436:SER:OG	2:L:437:SER:N	2.45	0.48
2:L:457:LEU:HD11	2:L:533:ILE:HG13	1.94	0.48
7:M:463:LYS:HE3	2:N:383:ALA:HA	1.96	0.48
8:I:65:DC:H2''	8:I:66:DG:C8	2.49	0.48
1:K:95:ASN:ND2	1:K:102:ILE:O	2.46	0.47
1:K:168:LEU:O	1:K:203:MET:N	2.45	0.47
3:C:26:PRO:HD3	4:D:37:TYR:CG	2.49	0.47
7:M:256:LEU:HD21	7:M:275:ASN:HB2	1.96	0.47
7:M:302:THR:HG22	2:N:291:LYS:HD2	1.96	0.47
8:I:134:DA:H2''	8:I:135:DG:C5	2.49	0.47
1:K:274:TYR:HB3	2:L:433:TYR:CE2	2.50	0.47
1:K:276:LEU:HD11	2:L:435:PHE:HZ	1.79	0.47
2:N:104:GLN:HB2	2:N:141:ARG:HG3	1.95	0.47
8:I:80:DT:H3	9:J:74:DA:H61	1.61	0.47
5:E:119:ILE:HG13	6:F:50:ILE:HG13	1.96	0.47
8:I:11:DA:C8	8:I:12:DT:H72	2.49	0.47
8:I:115:DT:H2''	8:I:116:DA:C8	2.49	0.47
9:J:118:DC:H2''	9:J:119:DA:H8	1.79	0.47
1:K:336:GLU:HG3	2:L:505:LEU:HD11	1.96	0.47
7:M:463:LYS:O	7:M:467:GLU:HG2	2.15	0.47
6:B:63:GLU:OE1	6:B:64:ASN:N	2.47	0.47
7:M:64:ILE:HG21	7:M:122:PHE:HB2	1.95	0.47
7:M:276:LEU:HD22	7:M:367:PHE:HB2	1.97	0.47
1:K:36:ASP:N	1:K:81:ASP:OD1	2.45	0.47
5:E:100:LEU:HD23	6:F:37:LEU:HD13	1.95	0.47
7:M:44:ALA:HB1	7:M:89:GLY:HA3	1.97	0.47
8:I:63:DA:H2''	8:I:64:DA:H8	1.78	0.47
9:J:96:DC:H2''	9:J:97:DG:H8	1.80	0.47
1:K:168:LEU:HB3	1:K:202:LEU:HD13	1.97	0.47
2:L:484:ASN:O	2:L:488:GLN:NE2	2.48	0.47
4:H:34:TYR:O	4:H:38:VAL:HG12	2.15	0.47
5:A:50:GLU:OE1	5:A:50:GLU:N	2.47	0.47
6:B:79:LYS:N	9:J:105:DA:OP1	2.34	0.47

Continued on next page...

Continued from previous page...

Atom-1	Atom-2	Interatomic distance (Å)	Clash overlap (Å)
8:I:103:DG:H2'	8:I:104:DG:O4'	2.15	0.47
8:I:141:DT:O4	8:I:142:DA:N6	2.48	0.47
3:C:115:LEU:HD22	6:F:44:LYS:HE3	1.97	0.47
5:E:113:HIS:CG	5:A:126:LEU:HD22	2.50	0.47
8:I:39:DC:H2''	8:I:40:DG:N7	2.30	0.47
1:K:413:LEU:HA	1:K:433:GLN:O	2.14	0.47
5:E:93:GLN:O	5:E:97:GLU:HG2	2.14	0.47
2:N:366:ALA:HB2	2:N:377:LEU:HD12	1.96	0.47
1:K:119:LEU:HA	1:K:122:PHE:CZ	2.50	0.47
6:F:45:ARG:C	6:F:46:ILE:HD13	2.40	0.47
3:C:59:THR:HA	3:C:62:ILE:HG22	1.96	0.46
7:M:463:LYS:HD2	2:N:387:LEU:HD12	1.97	0.46
2:N:328:GLU:O	2:N:332:LYS:HB3	2.14	0.46
9:J:133:DG:C2	9:J:134:DG:C6	3.04	0.46
1:K:276:LEU:HD11	2:L:435:PHE:CZ	2.50	0.46
2:L:348:SER:HA	2:L:390:VAL:HG13	1.96	0.46
3:G:101:THR:OG1	3:G:102:ILE:N	2.45	0.46
2:N:16:VAL:HB	2:N:101:GLY:H	1.80	0.46
1:K:86:VAL:HG22	1:K:104:VAL:HG22	1.97	0.46
2:L:59:PHE:HB2	2:L:105:ALA:HB3	1.97	0.46
2:L:457:LEU:HD23	2:L:529:PRO:HG2	1.97	0.46
3:G:50:TYR:OH	4:H:108:VAL:HG23	2.15	0.46
2:N:83:LEU:HD11	2:N:122:THR:HA	1.96	0.46
2:N:115:MET:HG3	2:N:150:ILE:HD11	1.97	0.46
2:N:306:LEU:N	2:N:309:ASP:OD2	2.47	0.46
8:I:39:DC:H2''	8:I:40:DG:C8	2.50	0.46
7:M:297:LYS:NZ	2:N:302:GLU:OE1	2.42	0.46
2:N:216:GLU:HB3	2:N:220:GLY:HA3	1.97	0.46
2:N:265:LYS:HA	2:N:362:LEU:HD23	1.95	0.46
8:I:81:DC:H2''	8:I:82:DC:C5	2.50	0.46
9:J:88:DC:OP2	9:J:88:DC:H3'	2.16	0.46
1:K:75:ILE:HG12	2:L:317:GLY:HA2	1.97	0.46
1:K:69:SER:C	1:K:247:ARG:HH12	2.24	0.46
1:K:241:ASP:OD1	1:K:241:ASP:N	2.47	0.46
1:K:290:ARG:NH2	2:L:309:ASP:OD2	2.49	0.46
1:K:388:LYS:O	1:K:391:GLU:HG3	2.16	0.46
3:C:13:LYS:HD2	3:C:13:LYS:HA	1.72	0.46
3:G:79:ILE:O	3:G:82:HIS:N	2.47	0.46
8:I:73:DC:H2'	8:I:74:DG:H8	1.79	0.46
8:I:75:DC:O2	9:J:79:DG:N2	2.49	0.46
8:I:121:DC:N4	9:J:32:DG:O6	2.49	0.46

Continued on next page...

Continued from previous page...

Atom-1	Atom-2	Interatomic distance (Å)	Clash overlap (Å)
9:J:141:DG:H2''	9:J:142:DA:C8	2.50	0.46
1:K:41:LEU:HB3	1:K:168:LEU:HA	1.97	0.46
3:G:20:ARG:NH1	4:H:122:LYS:OXT	2.37	0.46
3:G:79:ILE:HD12	3:G:80:PRO:CD	2.37	0.46
1:K:492:ALA:HA	1:K:497:LEU:HB2	1.97	0.46
2:L:16:VAL:HA	2:L:31:PHE:CE1	2.51	0.46
2:L:411:HIS:CE1	2:L:413:LYS:HG2	2.50	0.46
2:L:523:THR:O	2:L:527:GLN:HG2	2.15	0.46
8:I:126:DC:H2'	8:I:127:DA:C8	2.51	0.46
1:K:302:THR:HA	2:L:292:GLU:H	1.81	0.46
1:K:520:SER:O	1:K:520:SER:OG	2.32	0.46
2:L:341:SER:O	2:L:394:ARG:HG2	2.16	0.46
7:M:461:LYS:HZ1	7:M:525:PHE:N	2.14	0.46
2:L:43:GLN:NE2	2:L:495:LEU:HD13	2.31	0.46
2:L:450:GLN:HB3	2:L:537:PHE:CE2	2.51	0.46
7:M:340:PHE:CZ	2:N:512:ILE:HG21	2.51	0.46
8:I:40:DG:O6	9:J:113:DA:N6	2.49	0.46
1:K:239:LEU:HG	1:K:243:LEU:HD23	1.98	0.45
1:K:351:LYS:O	1:K:395:ALA:N	2.39	0.45
2:L:265:LYS:HD2	2:L:268:LEU:HG	1.98	0.45
2:L:404:GLN:NE2	2:L:424:LEU:O	2.49	0.45
3:G:32:ARG:HD3	9:J:33:DG:OP2	2.16	0.45
2:N:12:LEU:HA	2:N:135:PHE:HE2	1.81	0.45
8:I:151:DG:H5'	8:I:151:DG:C8	2.51	0.45
1:K:40:PHE:N	1:K:84:ALA:O	2.40	0.45
6:F:79:LYS:HB3	6:F:79:LYS:HE3	1.59	0.45
7:M:381:LEU:HG	2:N:537:PHE:CD1	2.50	0.45
1:K:525:PHE:CE1	1:K:529:VAL:HG21	2.51	0.45
2:L:352:GLN:HB3	2:L:355:PHE:HD2	1.81	0.45
4:H:26:ARG:HB3	4:H:27:LYS:H	1.60	0.45
7:M:271:VAL:O	7:M:271:VAL:HG13	2.16	0.45
2:N:108:LEU:HD13	2:N:142:PHE:CE1	2.47	0.45
2:N:280:ASP:HB2	2:N:288:ASP:HB2	1.97	0.45
8:I:132:DT:H2''	8:I:133:DC:C5	2.51	0.45
3:G:67:GLY:HA3	4:H:46:HIS:CD2	2.51	0.45
5:A:41:TYR:HB2	9:J:86:DT:OP2	2.16	0.45
7:M:189:LYS:HA	7:M:189:LYS:HD3	1.68	0.45
8:I:15:DC:H2''	8:I:16:DG:C8	2.52	0.45
9:J:17:DA:H2''	9:J:18:DT:H5'	1.99	0.45
1:K:40:PHE:CG	1:K:67:ILE:HG12	2.52	0.45
1:K:315:ASP:HB3	2:L:280:ASP:HA	1.99	0.45

Continued on next page...

Continued from previous page...

Atom-1	Atom-2	Interatomic distance (Å)	Clash overlap (Å)
1:K:346:MET:HE1	1:K:410:PHE:HE1	1.80	0.45
5:E:64:LYS:HG2	8:I:95:DC:OP1	2.17	0.45
3:G:29:ARG:NH1	4:H:32:GLU:OE1	2.49	0.45
4:H:54:LYS:HD2	4:H:54:LYS:HA	1.60	0.45
7:M:217:TYR:HD1	7:M:220:ILE:HD13	1.80	0.45
9:J:88:DC:H1'	9:J:89:DG:C4	2.51	0.45
2:L:50:ASN:OD1	2:L:50:ASN:N	2.48	0.45
3:G:80:PRO:HB3	4:H:58:ILE:HD12	1.98	0.45
2:N:206:GLU:O	2:N:209:LYS:HG2	2.17	0.45
3:C:45:ALA:O	3:C:48:PRO:HD2	2.16	0.45
4:D:97:LEU:O	6:B:92:ARG:NH2	2.47	0.45
7:M:403:ARG:HD3	8:I:149:DG:H1'	1.97	0.45
2:N:19:THR:H	2:N:139:SER:HB2	1.81	0.45
1:K:95:ASN:OD1	1:K:98:ASN:N	2.50	0.45
1:K:367:PHE:CE2	1:K:369:TYR:HB2	2.51	0.45
2:L:27:ILE:HG13	2:L:185:LEU:HD21	1.99	0.45
6:F:31:LYS:HB3	6:F:31:LYS:HE2	1.81	0.45
8:I:26:DC:H42	9:J:128:DG:H1	1.63	0.45
9:J:70:DG:H2''	9:J:71:DG:C5	2.51	0.45
1:K:140:ASP:OD1	1:K:141:TYR:N	2.47	0.45
5:E:97:GLU:OE1	6:F:37:LEU:HD21	2.17	0.45
6:F:30:THR:OG1	9:J:65:DA:OP2	2.27	0.45
4:H:27:LYS:H	4:H:27:LYS:HG2	1.62	0.45
6:B:38:ALA:HB1	6:B:43:VAL:HG11	1.99	0.45
2:N:362:LEU:HD12	2:N:421:TYR:HD2	1.82	0.45
3:G:59:THR:HG22	4:H:41:VAL:HG11	1.98	0.45
7:M:339:ARG:HH21	7:M:341:ASP:H	1.65	0.45
8:I:52:DA:H2''	8:I:53:DG:N7	2.32	0.45
1:K:388:LYS:HE2	2:L:455:ASP:HB2	1.99	0.44
5:A:100:LEU:HD23	5:A:100:LEU:HA	1.77	0.44
2:N:295:TYR:CD2	2:N:310:ILE:HG13	2.52	0.44
8:I:42:DA:N6	9:J:111:DC:N3	2.65	0.44
1:K:317:LYS:HB3	1:K:329:LEU:O	2.17	0.44
5:E:63:ARG:NH2	8:I:94:DA:O3'	2.50	0.44
5:A:82:LEU:HD23	5:A:82:LEU:HA	1.83	0.44
7:M:439:PHE:HA	2:N:479:THR:O	2.17	0.44
2:L:456:ALA:O	2:L:460:SER:HB3	2.17	0.44
5:E:129:ARG:HH11	5:A:109:LEU:HD21	1.83	0.44
7:M:311:LEU:HD22	2:N:289:ILE:HG23	1.99	0.44
1:K:202:LEU:HG	1:K:204:HIS:CD2	2.51	0.44
3:C:17:ARG:NH2	8:I:34:DT:OP2	2.46	0.44

Continued on next page...

Continued from previous page...

Atom-1	Atom-2	Interatomic distance (Å)	Clash overlap (Å)
4:D:34:TYR:O	4:D:38:VAL:HG12	2.17	0.44
7:M:278:GLN:NE2	2:N:428:GLU:O	2.33	0.44
2:N:271:ARG:NH2	9:J:9:DA:OP2	2.43	0.44
2:L:46:VAL:HG22	2:L:86:PRO:C	2.43	0.44
7:M:277:VAL:HG12	2:N:430:LEU:HD12	1.99	0.44
2:N:454:VAL:HG23	2:N:537:PHE:HZ	1.83	0.44
8:I:115:DT:H2''	8:I:116:DA:H8	1.82	0.44
2:L:346:CYS:O	2:L:390:VAL:N	2.51	0.44
2:L:485:PRO:HA	2:L:488:GLN:OE1	2.18	0.44
4:H:51:ILE:HG23	4:H:55:ALA:HB3	1.99	0.44
8:I:59:DC:H2''	8:I:60:DT:C6	2.52	0.44
9:J:41:DG:H2''	9:J:42:DG:N7	2.32	0.44
1:K:233:PHE:CD1	1:K:245:LYS:HG2	2.53	0.44
1:K:325:ARG:NH2	2:L:498:ALA:O	2.46	0.44
1:K:518:LEU:HD22	1:K:521:LEU:HB2	1.99	0.44
1:K:525:PHE:O	1:K:529:VAL:HB	2.18	0.44
6:F:62:LEU:HD23	6:F:62:LEU:HA	1.77	0.44
3:G:84:GLN:NE2	3:G:106:GLY:O	2.36	0.44
7:M:165:ARG:NH1	7:M:249:LYS:O	2.51	0.44
2:N:77:ILE:HD13	2:N:114:SER:HB3	1.99	0.44
2:N:115:MET:HB3	2:N:153:SER:OG	2.17	0.44
8:I:110:DC:H2'	8:I:111:DT:H71	2.00	0.44
8:I:147:DC:O2	8:I:148:DT:N3	2.50	0.44
1:K:359:HIS:CD2	2:L:420:VAL:HG21	2.52	0.44
1:K:441:ASP:HB2	2:L:270:GLU:HG2	2.00	0.44
1:K:450:GLU:HB3	1:K:452:ILE:HG13	1.99	0.44
2:L:33:GLN:O	2:L:37:VAL:HG22	2.18	0.44
7:M:407:PRO:HG3	2:N:271:ARG:HG3	2.00	0.44
2:N:347:LYS:HD2	2:N:347:LYS:HA	1.76	0.44
9:J:25:DC:H2''	9:J:26:DG:C8	2.53	0.44
9:J:123:DG:H2''	9:J:124:DA:N7	2.33	0.44
1:K:36:ASP:OD1	1:K:37:SER:N	2.51	0.43
2:L:509:GLN:HB3	2:L:511:HIS:CE1	2.53	0.43
3:G:115:LEU:HD12	3:G:116:LEU:HB2	2.00	0.43
7:M:67:ILE:HG23	7:M:119:LEU:HD13	2.00	0.43
8:I:67:DC:N3	8:I:68:DA:N6	2.66	0.43
9:J:45:DT:H2''	9:J:46:DA:H5''	1.99	0.43
9:J:46:DA:H2''	9:J:47:DA:C8	2.53	0.43
1:K:272:GLY:O	1:K:368:VAL:HA	2.17	0.43
1:K:448:PHE:HB3	2:L:365:PHE:HE2	1.83	0.43
1:K:518:LEU:HD23	1:K:521:LEU:HD12	2.00	0.43

Continued on next page...

Continued from previous page...

Atom-1	Atom-2	Interatomic distance (Å)	Clash overlap (Å)
3:G:115:LEU:HD12	3:G:116:LEU:N	2.33	0.43
2:N:233:LYS:HA	2:N:481:LYS:O	2.18	0.43
3:C:42:ARG:HG2	9:J:116:DA:H5'	1.99	0.43
7:M:365:SER:H	2:N:357:MET:HG2	1.83	0.43
8:I:102:DG:H1'	8:I:103:DG:C5	2.53	0.43
1:K:52:GLN:O	1:K:54:GLU:N	2.49	0.43
1:K:164:LYS:HB2	1:K:197:GLY:O	2.18	0.43
1:K:351:LYS:HG2	2:L:463:LEU:HD12	2.00	0.43
1:K:481:PRO:O	1:K:485:GLN:HB2	2.18	0.43
1:K:507:THR:HB	2:L:394:ARG:HE	1.83	0.43
2:L:443:LYS:HE2	2:L:443:LYS:H	1.83	0.43
2:L:483:PRO:HG2	2:L:488:GLN:NE2	2.34	0.43
4:H:51:ILE:HG22	4:H:52:SER:O	2.18	0.43
8:I:26:DC:N3	9:J:128:DG:N2	2.66	0.43
9:J:77:DG:C8	9:J:78:DC:N4	2.87	0.43
1:K:171:ASN:HB3	1:K:205:LEU:HB2	1.99	0.43
1:K:319:SER:O	2:L:277:THR:N	2.49	0.43
1:K:461:LYS:HB3	1:K:525:PHE:CD2	2.54	0.43
2:L:198:THR:HG22	2:L:201:GLN:HB2	2.00	0.43
2:L:363:LYS:HD3	2:L:365:PHE:HE1	1.84	0.43
3:C:115:LEU:O	6:F:44:LYS:NZ	2.37	0.43
5:E:39:HIS:N	8:I:86:DG:O3'	2.51	0.43
8:I:25:DG:N2	9:J:130:DC:O2	2.51	0.43
1:K:488:ARG:HH21	2:L:316:TYR:HE1	1.65	0.43
2:L:510:GLN:OE1	2:L:514:ASN:ND2	2.47	0.43
3:G:51:LEU:HD12	3:G:51:LEU:HA	1.83	0.43
5:A:51:ILE:HD13	6:B:39:ARG:O	2.18	0.43
5:A:64:LYS:NZ	9:J:95:DG:O5'	2.41	0.43
8:I:52:DA:C4	8:I:53:DG:C6	3.07	0.43
8:I:85:DC:H2''	8:I:86:DG:H5'	2.00	0.43
1:K:365:SER:OG	2:L:354:ARG:O	2.28	0.43
2:L:44:ARG:HA	2:L:491:PHE:CE2	2.54	0.43
4:D:77:LEU:HD21	6:B:75:HIS:CD2	2.54	0.43
3:G:39:TYR:HB3	4:H:75:SER:HB2	2.00	0.43
3:G:99:ARG:HA	3:G:99:ARG:HD2	1.85	0.43
5:A:97:GLU:CG	6:B:37:LEU:HD21	2.49	0.43
7:M:59:PRO:HA	7:M:62:MET:SD	2.59	0.43
9:J:132:DC:H2'	9:J:133:DG:C5	2.54	0.43
1:K:35:ARG:HG2	1:K:81:ASP:HA	2.01	0.43
1:K:64:ILE:HD13	1:K:67:ILE:HD12	2.01	0.43
2:L:184:ARG:HB3	2:L:190:PRO:HA	2.01	0.43

Continued on next page...

Continued from previous page...

Atom-1	Atom-2	Interatomic distance (Å)	Clash overlap (Å)
2:L:250:ARG:HA	2:L:250:ARG:HD2	1.77	0.43
4:D:43:LYS:NZ	4:D:47:PRO:O	2.41	0.43
5:E:83:ARG:HB2	6:F:80:THR:HG22	2.00	0.43
3:G:14:ALA:HA	9:J:35:DG:OP1	2.19	0.43
7:M:71:TYR:CD1	7:M:83:LEU:HD13	2.54	0.43
7:M:75:ILE:HD11	7:M:111:PRO:HB2	2.01	0.43
7:M:467:GLU:OE1	7:M:470:ARG:NH2	2.50	0.43
8:I:121:DC:H2''	8:I:122:DC:C5	2.54	0.43
1:K:223:ILE:H	1:K:223:ILE:HG12	1.67	0.43
1:K:473:TYR:HB2	2:L:346:CYS:HB3	2.01	0.43
7:M:260:LYS:HE2	7:M:270:SER:HB2	2.01	0.43
2:N:107:PHE:HA	2:N:111:LEU:HD12	2.01	0.43
8:I:126:DC:H2''	8:I:127:DA:OP1	2.18	0.43
9:J:78:DC:H6	9:J:78:DC:H2'	1.69	0.43
1:K:71:TYR:CZ	1:K:111:PRO:HG3	2.54	0.43
1:K:416:GLN:NE2	1:K:433:GLN:HB2	2.34	0.43
2:L:272:VAL:HG21	2:L:490:LEU:HD11	2.00	0.43
5:E:79:LYS:HG2	5:E:80:THR:H	1.84	0.43
4:H:56:MET:HE2	4:H:56:MET:HA	1.99	0.43
7:M:69:SER:HB3	7:M:243:LEU:HD21	2.00	0.43
8:I:70:DG:N2	9:J:84:DC:O2	2.52	0.43
2:L:56:LEU:HB2	2:L:81:ARG:HB3	2.01	0.42
5:A:92:LEU:HD21	6:B:65:VAL:HG11	2.01	0.42
7:M:166:ILE:HB	7:M:200:LEU:HA	2.01	0.42
7:M:261:LEU:HB3	7:M:269:ILE:HG23	2.00	0.42
8:I:103:DG:H2''	8:I:104:DG:OP1	2.19	0.42
1:K:65:GLN:HG3	1:K:123:LYS:HD2	2.00	0.42
1:K:506:LEU:HD12	1:K:506:LEU:H	1.84	0.42
4:H:105:LYS:HG3	4:H:106:HIS:N	2.34	0.42
2:N:9:ALA:HB3	2:N:131:HIS:H	1.85	0.42
2:N:209:LYS:HA	2:N:212:MET:HG3	2.01	0.42
2:N:412:ILE:HG12	2:N:417:GLU:HG2	2.02	0.42
8:I:121:DC:H2''	8:I:122:DC:C6	2.54	0.42
9:J:126:DC:H2''	9:J:127:DG:C8	2.55	0.42
1:K:290:ARG:O	1:K:293:ASN:N	2.41	0.42
1:K:372:GLU:HG3	1:K:379:SER:HB2	2.01	0.42
3:G:91:GLU:OE1	3:G:92:GLU:N	2.53	0.42
5:A:82:LEU:HD11	6:B:70:VAL:HG23	2.00	0.42
7:M:304:ASN:N	7:M:309:GLY:O	2.46	0.42
8:I:83:DC:H6	8:I:83:DC:H2'	1.60	0.42
9:J:74:DA:C5	9:J:75:DC:C4	3.07	0.42

Continued on next page...

Continued from previous page...

Atom-1	Atom-2	Interatomic distance (Å)	Clash overlap (Å)
1:K:129:LYS:HE3	1:K:129:LYS:HB3	1.89	0.42
7:M:377:GLY:H	2:N:444:TYR:HE2	1.67	0.42
7:M:413:LEU:HB3	7:M:432:PHE:CG	2.53	0.42
2:N:222:ASP:HB2	2:N:238:LYS:HE2	2.01	0.42
8:I:74:DG:H2'	8:I:75:DC:H6	1.84	0.42
9:J:28:DG:H1'	9:J:29:DC:H5'	2.01	0.42
2:L:58:LEU:O	2:L:78:THR:N	2.44	0.42
2:L:352:GLN:OE1	2:L:353:ARG:N	2.51	0.42
7:M:291:GLU:HA	2:N:322:PRO:HG3	2.01	0.42
7:M:388:LYS:HA	7:M:388:LYS:HD3	1.77	0.42
2:N:447:THR:HG23	2:N:449:ALA:H	1.85	0.42
1:K:90:THR:HG21	1:K:135:MET:HE3	2.01	0.42
1:K:335:GLU:OE2	1:K:405:ASN:ND2	2.53	0.42
1:K:381:LEU:HA	2:L:537:PHE:CZ	2.54	0.42
5:E:62:ILE:HD13	6:F:29:ILE:HD12	2.02	0.42
4:H:51:ILE:HG21	4:H:56:MET:HE2	2.02	0.42
1:K:463:LYS:HG2	2:L:387:LEU:HG	2.02	0.42
4:H:76:ARG:HD2	4:H:80:TYR:OH	2.20	0.42
8:I:14:DC:H2''	8:I:15:DC:C5	2.54	0.42
9:J:75:DC:C2	9:J:76:DA:N6	2.88	0.42
1:K:72:ILE:HD12	1:K:72:ILE:HA	1.85	0.42
1:K:335:GLU:O	1:K:339:ARG:N	2.53	0.42
6:B:71:THR:HA	6:B:74:GLU:HG3	2.01	0.42
7:M:253:LYS:HG3	2:N:433:TYR:CD1	2.55	0.42
7:M:473:TYR:CD2	2:N:350:GLN:HB3	2.55	0.42
2:N:276:TRP:H	9:J:9:DA:H4'	1.83	0.42
8:I:12:DT:O4	9:J:141:DG:N1	2.53	0.42
9:J:68:DC:H5'	9:J:68:DC:C6	2.55	0.42
1:K:347:LEU:HD23	1:K:397:LEU:O	2.19	0.42
5:E:88:ALA:O	5:E:92:LEU:HD23	2.19	0.42
4:H:75:SER:HA	4:H:86:ILE:HD11	2.02	0.42
2:N:313:GLY:HA2	2:N:323:PHE:H	1.85	0.42
2:N:394:ARG:NH1	2:N:395:TYR:O	2.53	0.42
8:I:81:DC:H2''	8:I:82:DC:C6	2.55	0.42
1:K:123:LYS:HA	1:K:123:LYS:HD3	1.69	0.42
1:K:321:ILE:HG12	1:K:326:GLN:HA	2.00	0.42
7:M:224:ALA:H	7:M:232:HIS:H	1.68	0.42
2:N:377:LEU:HD23	2:N:377:LEU:HA	1.93	0.42
2:N:533:ILE:O	2:N:537:PHE:HB2	2.20	0.42
8:I:80:DT:H5'	8:I:80:DT:C6	2.55	0.42
9:J:34:DA:H2''	9:J:35:DG:H8	1.85	0.42

Continued on next page...

Continued from previous page...

Atom-1	Atom-2	Interatomic distance (Å)	Clash overlap (Å)
1:K:228:ASP:OD1	1:K:229:LEU:N	2.51	0.41
7:M:452:ILE:HG13	2:N:374:ALA:HB1	2.01	0.41
2:N:107:PHE:HB3	2:N:142:PHE:CE1	2.54	0.41
8:I:41:DT:H2''	8:I:42:DA:N7	2.35	0.41
8:I:95:DC:H6	8:I:95:DC:H5'	1.85	0.41
1:K:91:GLU:HG3	1:K:137:HIS:H	1.85	0.41
3:C:15:LYS:HA	3:C:15:LYS:HD3	1.66	0.41
3:C:75:LYS:HZ3	9:J:135:DC:H5'	1.86	0.41
3:G:50:TYR:CZ	4:H:92:GLN:HB2	2.54	0.41
6:B:30:THR:OG1	6:B:32:PRO:HD2	2.20	0.41
7:M:418:GLU:N	7:M:430:PRO:HB3	2.35	0.41
2:N:77:ILE:HD12	2:N:113:VAL:HG13	2.03	0.41
2:N:360:GLN:OE1	2:N:362:LEU:HG	2.20	0.41
2:N:402:ASN:HD22	2:N:403:PRO:HD2	1.85	0.41
1:K:418:GLU:HG3	1:K:420:LEU:HB2	2.01	0.41
3:C:95:LYS:HE3	4:D:100:PRO:HB3	2.02	0.41
4:H:109:SER:O	4:H:112:THR:HG22	2.21	0.41
6:B:23:ARG:HB3	6:B:24:ASP:H	1.47	0.41
7:M:39:ILE:HD11	7:M:108:LEU:HD11	2.02	0.41
7:M:437:LEU:HD13	2:N:479:THR:HG21	2.02	0.41
8:I:5:DT:H6	8:I:5:DT:H2'	1.73	0.41
8:I:5:DT:H2''	8:I:6:DG:C8	2.54	0.41
8:I:135:DG:H2''	8:I:136:DA:C8	2.55	0.41
9:J:57:DC:H2''	9:J:58:DG:H8	1.85	0.41
1:K:442:ASP:O	2:L:267:ILE:HA	2.20	0.41
2:L:185:LEU:HD23	2:L:185:LEU:HA	1.87	0.41
2:L:399:LYS:O	2:L:402:ASN:ND2	2.54	0.41
7:M:168:LEU:HD21	7:M:202:LEU:HD12	2.02	0.41
7:M:484:GLN:O	7:M:488:ARG:HG2	2.19	0.41
9:J:43:DA:H2''	9:J:44:DG:C8	2.55	0.41
1:K:479:GLU:H	1:K:506:LEU:HD23	1.85	0.41
2:N:42:VAL:O	2:N:46:VAL:HG13	2.21	0.41
2:N:497:ARG:NH2	2:N:504:PRO:O	2.54	0.41
9:J:88:DC:H1'	9:J:89:DG:N9	2.36	0.41
1:K:113:ALA:O	1:K:116:ILE:HG12	2.20	0.41
1:K:420:LEU:HD21	1:K:424:LYS:HD2	2.03	0.41
2:L:375:VAL:O	2:L:379:SER:OG	2.34	0.41
2:L:378:SER:O	2:L:382:HIS:ND1	2.53	0.41
4:D:30:ARG:NH2	9:J:126:DC:O4'	2.54	0.41
6:F:38:ALA:HB1	6:F:43:VAL:HG21	2.02	0.41
6:F:50:ILE:HD13	6:F:50:ILE:HA	1.90	0.41

Continued on next page...

Continued from previous page...

Atom-1	Atom-2	Interatomic distance (Å)	Clash overlap (Å)
6:F:57:VAL:O	6:F:60:VAL:HG12	2.20	0.41
2:N:400:ARG:NH2	8:I:143:DC:O2	2.39	0.41
7:M:212:ASP:HB3	7:M:215:LEU:HG	2.02	0.41
9:J:59:DG:C8	9:J:60:DT:H72	2.56	0.41
1:K:259:LEU:HD23	1:K:259:LEU:HA	1.87	0.41
1:K:433:GLN:HG2	2:L:354:ARG:HB2	2.03	0.41
2:L:184:ARG:HD3	2:L:184:ARG:HA	1.79	0.41
7:M:421:ASP:OD1	7:M:425:ILE:N	2.52	0.41
2:N:114:SER:HA	2:N:117:VAL:HG22	2.03	0.41
2:N:503:GLU:HG2	2:N:504:PRO:HD2	2.03	0.41
1:K:289:TYR:HB2	1:K:294:GLU:HB2	2.02	0.41
1:K:342:ASP:OD1	1:K:342:ASP:N	2.54	0.41
1:K:348:MET:HG3	2:L:477:PHE:CE2	2.56	0.41
2:L:195:LYS:HB3	2:L:195:LYS:HE2	1.86	0.41
2:L:521:GLU:HG2	2:L:522:VAL:N	2.36	0.41
5:E:61:LEU:HD21	6:F:40:ARG:HH21	1.86	0.41
6:F:51:TYR:O	6:F:54:THR:HG22	2.21	0.41
7:M:34:GLY:HA3	7:M:162:SER:H	1.86	0.41
7:M:206:LYS:HG3	7:M:208:PRO:HD3	2.02	0.41
7:M:233:PHE:CD1	7:M:245:LYS:HG2	2.56	0.41
7:M:322:TYR:CD2	2:N:494:LEU:HD13	2.56	0.41
7:M:386:LEU:HD21	7:M:430:PRO:HB2	2.02	0.41
7:M:439:PHE:O	7:M:443:LYS:HG3	2.21	0.41
7:M:471:PHE:CE2	2:N:344:GLY:HA3	2.56	0.41
2:N:52:ASP:OD1	2:N:52:ASP:N	2.53	0.41
2:N:53:GLU:HB2	2:N:127:PHE:HZ	1.86	0.41
2:N:271:ARG:NH2	9:J:8:DG:H3'	2.36	0.41
8:I:86:DG:H2''	8:I:87:DC:H5''	2.02	0.41
9:J:63:DA:H2''	9:J:64:DA:H8	1.86	0.41
9:J:136:DA:C8	9:J:137:DC:C4	3.08	0.41
1:K:122:PHE:HA	1:K:127:GLY:HA3	2.02	0.41
1:K:201:ASP:OD1	1:K:201:ASP:N	2.46	0.41
1:K:276:LEU:H	1:K:366:LEU:CD1	2.34	0.41
3:C:88:ARG:HD3	3:C:88:ARG:HA	1.70	0.41
3:G:33:LEU:HD23	3:G:33:LEU:HA	1.84	0.41
7:M:111:PRO:O	2:N:317:GLY:HA3	2.21	0.41
7:M:224:ALA:C	7:M:232:HIS:H	2.30	0.41
7:M:296:VAL:HG11	2:N:305:VAL:HG21	2.02	0.41
7:M:339:ARG:HD2	7:M:339:ARG:HA	1.81	0.41
7:M:347:LEU:HA	7:M:397:LEU:O	2.20	0.41
2:N:333:TYR:CE2	2:N:403:PRO:HG2	2.55	0.41

Continued on next page...

Continued from previous page...

Atom-1	Atom-2	Interatomic distance (Å)	Clash overlap (Å)
3:C:41:GLU:CD	3:C:42:ARG:HG3	2.46	0.40
4:D:99:LEU:HA	4:D:100:PRO:HD3	1.93	0.40
4:H:113:LYS:HE3	4:H:113:LYS:HB3	1.88	0.40
7:M:65:GLN:HA	7:M:68:GLN:CD	2.46	0.40
7:M:164:LYS:HB3	7:M:198:ILE:HG12	2.02	0.40
7:M:254:ARG:HG2	2:N:431:ARG:HH22	1.86	0.40
2:N:213:ILE:HD12	2:N:213:ILE:HA	1.81	0.40
8:I:27:DC:N3	9:J:128:DG:N2	2.69	0.40
9:J:40:DG:H2''	9:J:41:DG:N7	2.36	0.40
2:L:167:PHE:HA	2:L:226:SER:HB3	2.04	0.40
2:L:340:PHE:HA	2:L:394:ARG:O	2.21	0.40
2:L:476:LEU:HD21	2:L:522:VAL:HG21	2.03	0.40
2:L:477:PHE:HZ	2:L:518:PRO:HB3	1.86	0.40
3:C:79:ILE:HB	3:C:82:HIS:CE1	2.56	0.40
4:D:43:LYS:HD2	4:D:43:LYS:HA	1.77	0.40
5:A:46:VAL:O	5:A:50:GLU:OE1	2.38	0.40
7:M:403:ARG:HH22	9:J:6:DA:H1'	1.86	0.40
2:N:59:PHE:HD2	2:N:105:ALA:HB3	1.85	0.40
8:I:64:DA:C4	8:I:65:DC:C5	3.09	0.40
1:K:108:LEU:HD23	1:K:108:LEU:HA	1.87	0.40
1:K:211:PHE:HD1	1:K:211:PHE:HA	1.80	0.40
2:L:252:THR:O	2:L:252:THR:OG1	2.38	0.40
2:L:313:GLY:HA3	2:L:322:PRO:HA	2.01	0.40
2:L:413:LYS:HG3	2:L:416:TYR:CZ	2.56	0.40
5:A:51:ILE:HD11	6:B:43:VAL:O	2.22	0.40
6:B:66:ILE:O	6:B:70:VAL:HG12	2.21	0.40
7:M:400:TYR:O	7:M:408:PRO:HA	2.20	0.40
7:M:443:LYS:HG2	2:N:267:ILE:HD13	2.03	0.40
8:I:60:DT:H3	9:J:94:DA:H61	1.69	0.40
9:J:49:DC:H6	9:J:49:DC:H2'	1.62	0.40
1:K:67:ILE:HD11	1:K:169:PHE:HE2	1.86	0.40
1:K:206:LYS:HE2	1:K:208:PRO:HG3	2.03	0.40
1:K:389:CYS:O	1:K:393:GLU:N	2.53	0.40
2:L:153:SER:HA	2:L:156:LYS:HD2	2.03	0.40
2:L:484:ASN:HB3	2:L:487:PHE:CE2	2.57	0.40
4:D:36:ILE:HD11	4:D:40:LYS:HE2	2.02	0.40
7:M:271:VAL:HG22	7:M:368:VAL:HB	2.03	0.40
7:M:387:ILE:O	7:M:390:LEU:HG	2.21	0.40
2:N:19:THR:OG1	2:N:139:SER:HB3	2.21	0.40
2:N:40:MET:HE1	2:N:231:LEU:HD22	2.03	0.40
2:N:210:MET:O	2:N:213:ILE:HG22	2.21	0.40

There are no symmetry-related clashes.

5.3 Torsion angles [i](#)

5.3.1 Protein backbone [i](#)

In the following table, the Percentiles column shows the percent Ramachandran outliers of the chain as a percentile score with respect to all PDB entries followed by that with respect to all EM entries.

The Analysed column shows the number of residues for which the backbone conformation was analysed, and the total number of residues.

Mol	Chain	Analysed	Favoured	Allowed	Outliers	Percentiles	
1	K	498/501 (99%)	445 (89%)	53 (11%)	0	100	100
2	L	520/540 (96%)	478 (92%)	42 (8%)	0	100	100
2	N	512/540 (95%)	488 (95%)	24 (5%)	0	100	100
3	C	108/110 (98%)	102 (94%)	5 (5%)	1 (1%)	14	47
3	G	105/110 (96%)	97 (92%)	8 (8%)	0	100	100
4	D	95/97 (98%)	94 (99%)	1 (1%)	0	100	100
4	H	95/97 (98%)	93 (98%)	2 (2%)	0	100	100
5	A	94/97 (97%)	92 (98%)	2 (2%)	0	100	100
5	E	94/97 (97%)	88 (94%)	5 (5%)	1 (1%)	11	43
6	B	82/84 (98%)	74 (90%)	8 (10%)	0	100	100
6	F	78/84 (93%)	73 (94%)	5 (6%)	0	100	100
7	M	476/501 (95%)	461 (97%)	15 (3%)	0	100	100
All	All	2757/2858 (96%)	2585 (94%)	170 (6%)	2 (0%)	49	79

All (2) Ramachandran outliers are listed below:

Mol	Chain	Res	Type
3	C	14	ALA
5	E	40	ARG

5.3.2 Protein sidechains [i](#)

In the following table, the Percentiles column shows the percent sidechain outliers of the chain as a percentile score with respect to all PDB entries followed by that with respect to all EM entries.

The Analysed column shows the number of residues for which the sidechain conformation was analysed, and the total number of residues.

Mol	Chain	Analysed	Rotameric	Outliers	Percentiles	
1	K	396/454 (87%)	395 (100%)	1 (0%)	86	82
2	L	411/484 (85%)	410 (100%)	1 (0%)	87	85
2	N	441/484 (91%)	438 (99%)	3 (1%)	76	78
3	C	85/87 (98%)	85 (100%)	0	100	100
3	G	83/87 (95%)	82 (99%)	1 (1%)	63	73
4	D	82/83 (99%)	82 (100%)	0	100	100
4	H	83/83 (100%)	82 (99%)	1 (1%)	63	73
5	A	83/85 (98%)	83 (100%)	0	100	100
5	E	80/85 (94%)	79 (99%)	1 (1%)	61	72
6	B	69/71 (97%)	68 (99%)	1 (1%)	59	71
6	F	65/71 (92%)	63 (97%)	2 (3%)	35	59
7	M	412/455 (90%)	411 (100%)	1 (0%)	87	85
All	All	2290/2529 (90%)	2278 (100%)	12 (0%)	78	80

All (12) residues with a non-rotameric sidechain are listed below:

Mol	Chain	Res	Type
1	K	486	HIS
2	L	43	GLN
5	E	124	ILE
6	F	63	GLU
6	F	79	LYS
3	G	34	LEU
4	H	92	GLN
6	B	25	ASN
7	M	347	LEU
2	N	23	SER
2	N	223	GLU
2	N	305	VAL

Sometimes sidechains can be flipped to improve hydrogen bonding and reduce clashes. All (4) such sidechains are listed below:

Mol	Chain	Res	Type
2	L	43	GLN
6	B	25	ASN

Continued on next page...

Continued from previous page...

Mol	Chain	Res	Type
7	M	480	ASN
2	N	402	ASN

5.3.3 RNA [i](#)

There are no RNA molecules in this entry.

5.4 Non-standard residues in protein, DNA, RNA chains [i](#)

There are no non-standard protein/DNA/RNA residues in this entry.

5.5 Carbohydrates [i](#)

There are no oligosaccharides in this entry.

5.6 Ligand geometry [i](#)

There are no ligands in this entry.

5.7 Other polymers [i](#)

There are no such residues in this entry.

5.8 Polymer linkage issues [i](#)

There are no chain breaks in this entry.

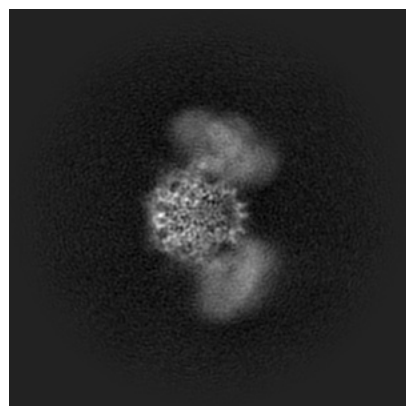
6 Map visualisation [i](#)

This section contains visualisations of the EMDB entry EMD-52861. These allow visual inspection of the internal detail of the map and identification of artifacts.

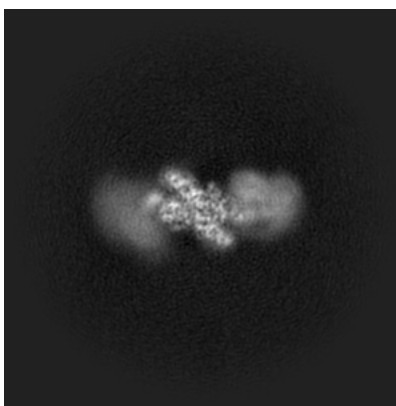
Images derived from a raw map, generated by summing the deposited half-maps, are presented below the corresponding image components of the primary map to allow further visual inspection and comparison with those of the primary map.

6.1 Orthogonal projections [i](#)

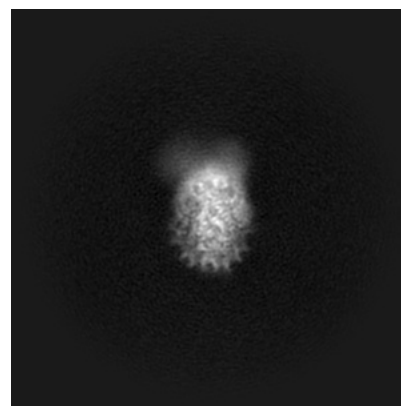
6.1.1 Primary map



X

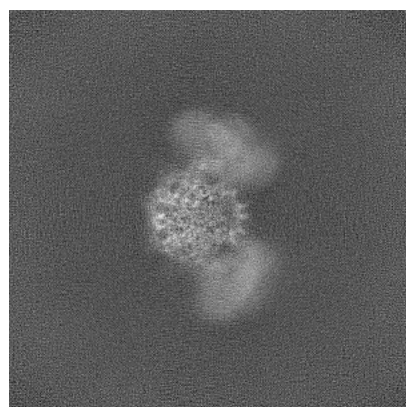


Y

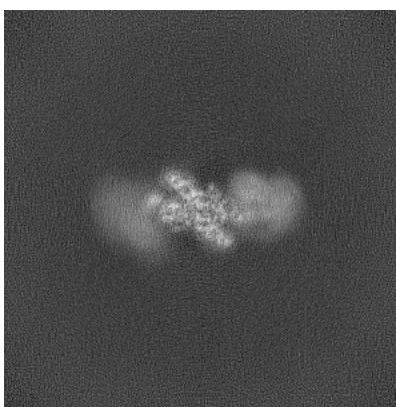


Z

6.1.2 Raw map



X



Y



Z

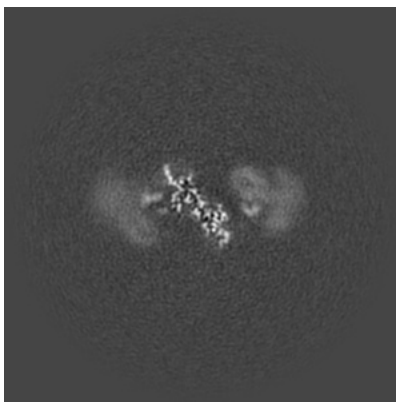
The images above show the map projected in three orthogonal directions.

6.2 Central slices [i](#)

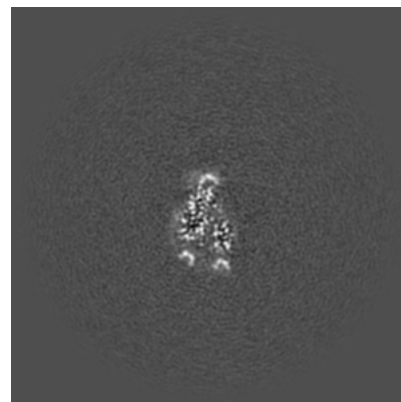
6.2.1 Primary map



X Index: 240

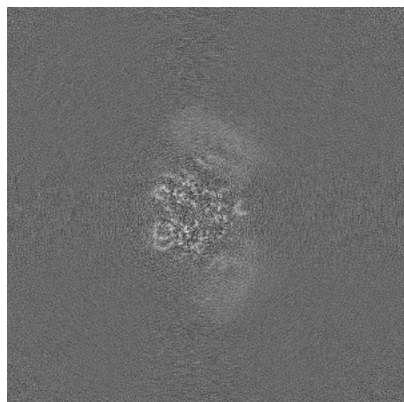


Y Index: 240

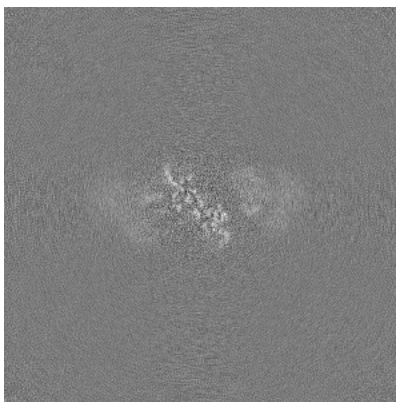


Z Index: 240

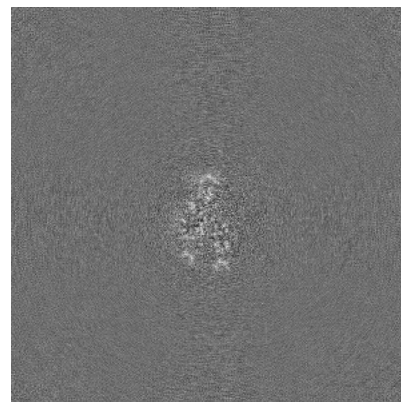
6.2.2 Raw map



X Index: 240



Y Index: 240

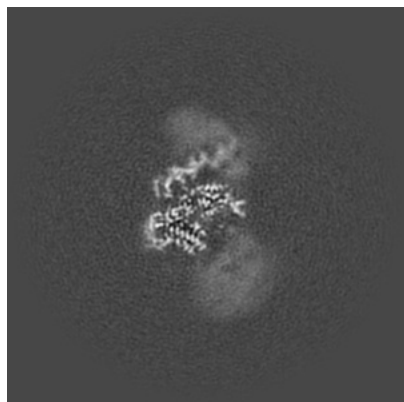


Z Index: 240

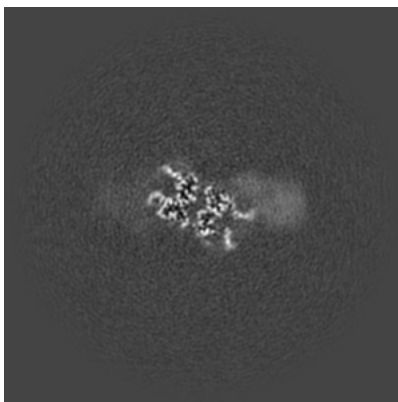
The images above show central slices of the map in three orthogonal directions.

6.3 Largest variance slices [i](#)

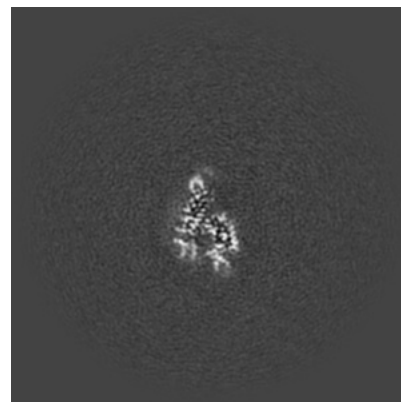
6.3.1 Primary map



X Index: 230

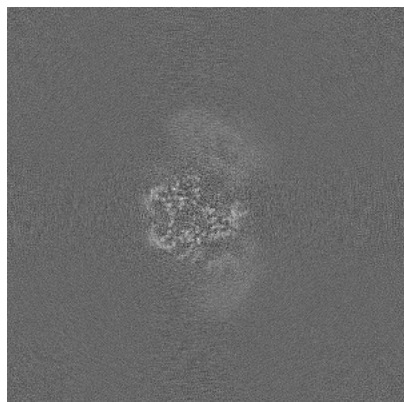


Y Index: 222

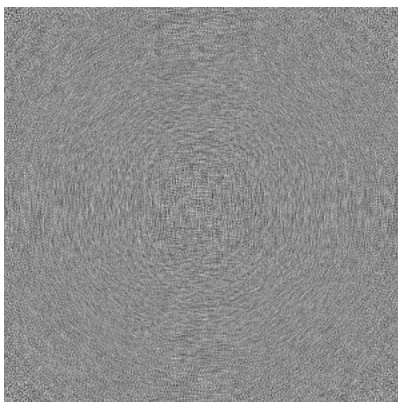


Z Index: 249

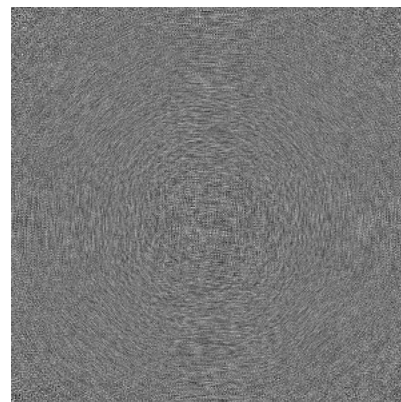
6.3.2 Raw map



X Index: 244



Y Index: 0

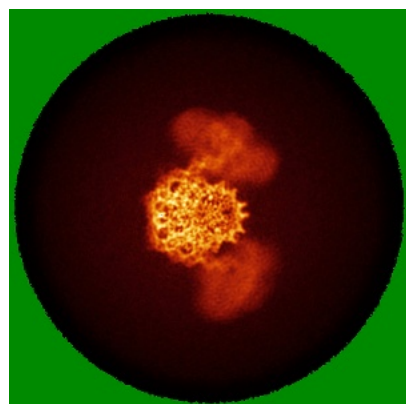


Z Index: 0

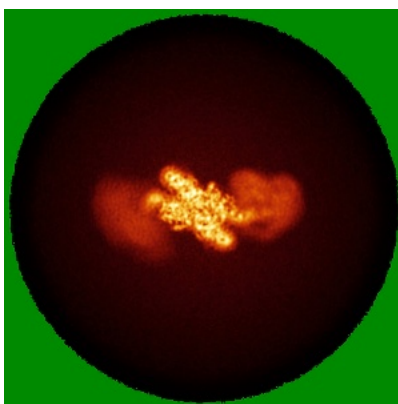
The images above show the largest variance slices of the map in three orthogonal directions.

6.4 Orthogonal standard-deviation projections (False-color) [i](#)

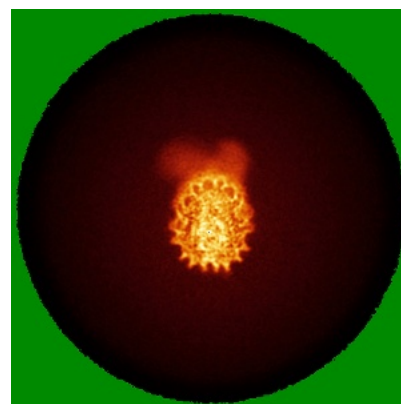
6.4.1 Primary map



X

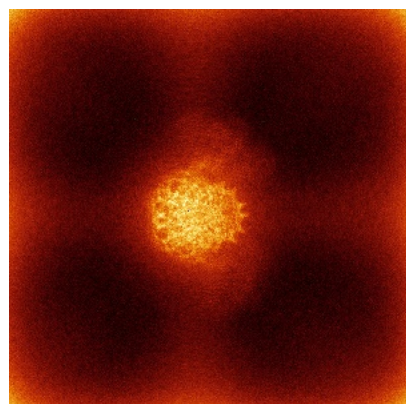


Y

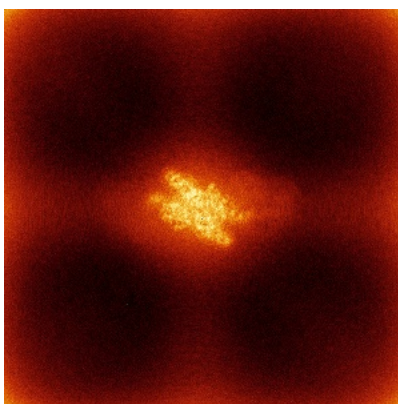


Z

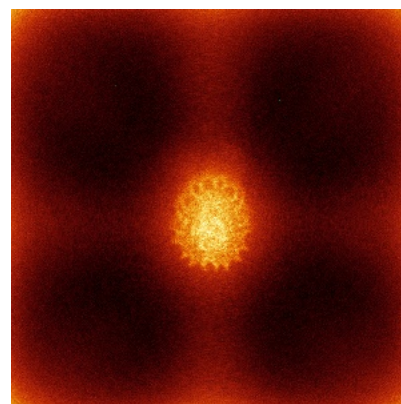
6.4.2 Raw map



X



Y

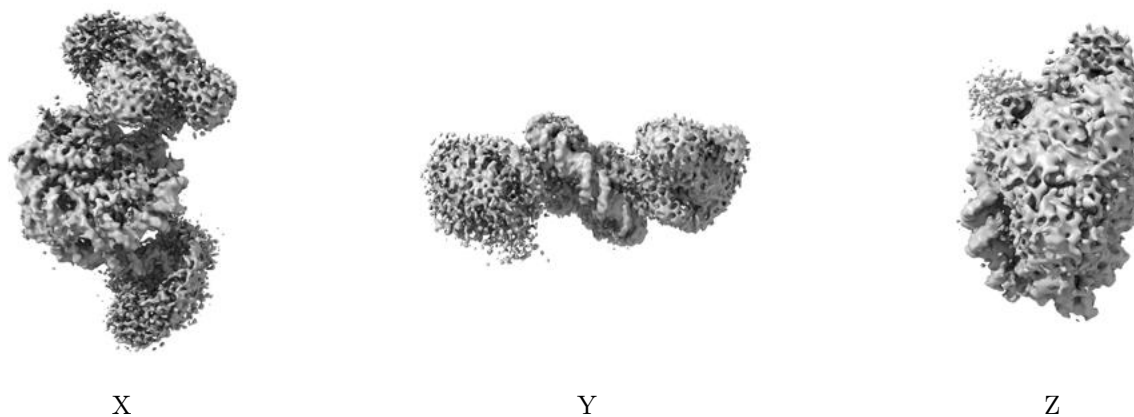


Z

The images above show the map standard deviation projections with false color in three orthogonal directions. Minimum values are shown in green, max in blue, and dark to light orange shades represent small to large values respectively.

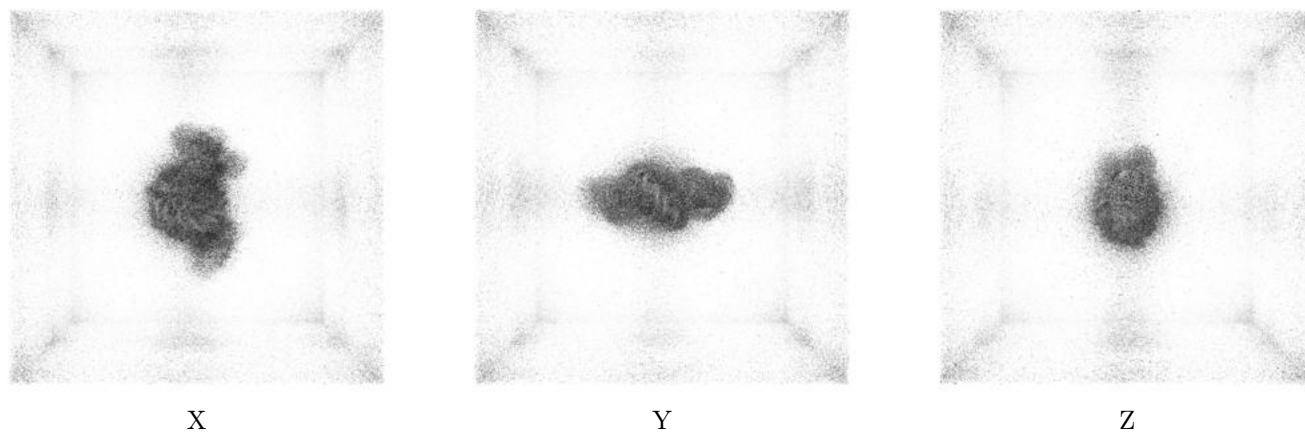
6.5 Orthogonal surface views [i](#)

6.5.1 Primary map



The images above show the 3D surface view of the map at the recommended contour level 0.06. These images, in conjunction with the slice images, may facilitate assessment of whether an appropriate contour level has been provided.

6.5.2 Raw map



These images show the 3D surface of the raw map. The raw map's contour level was selected so that its surface encloses the same volume as the primary map does at its recommended contour level.

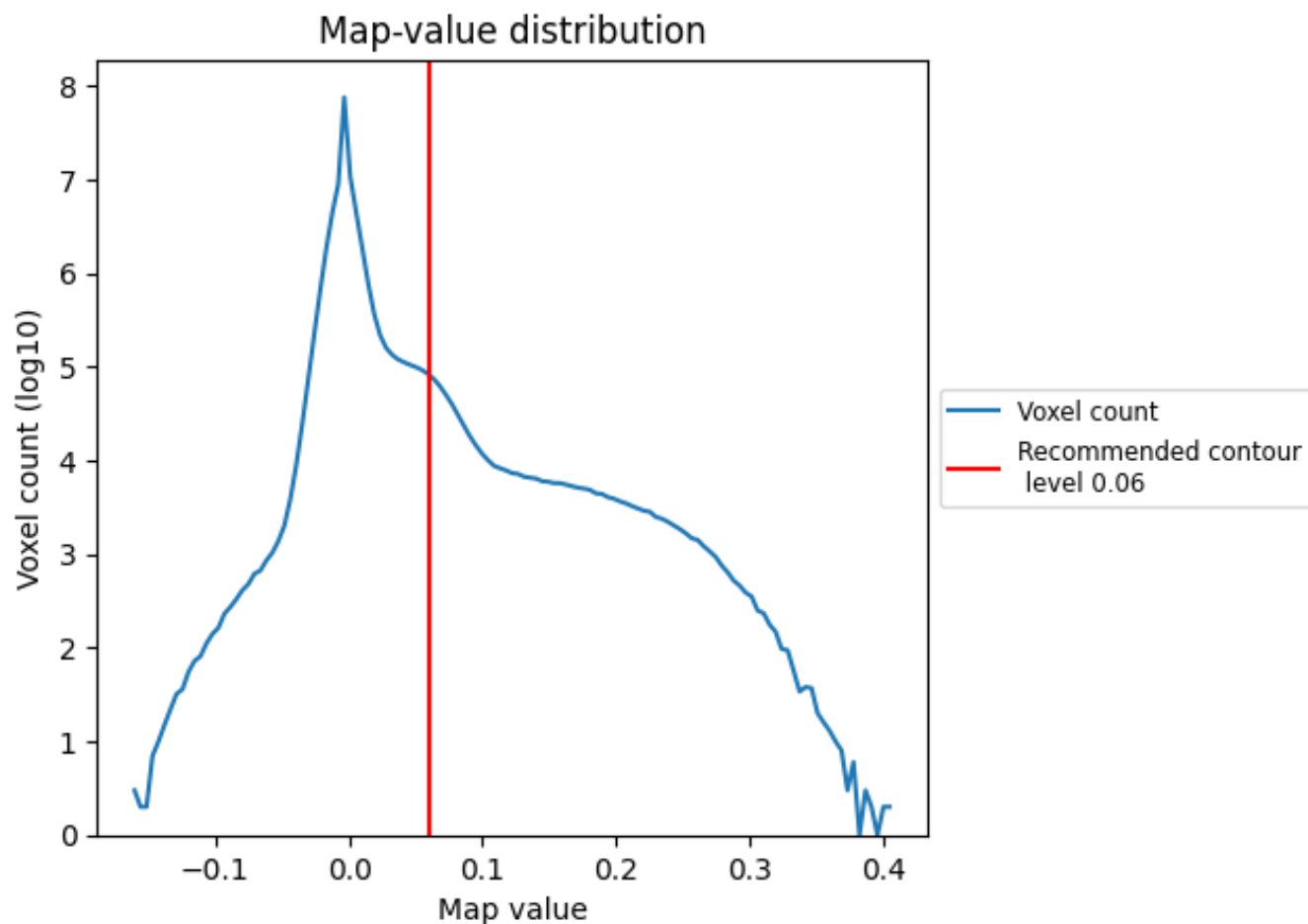
6.6 Mask visualisation [i](#)

This section was not generated. No masks/segmentation were deposited.

7 Map analysis [i](#)

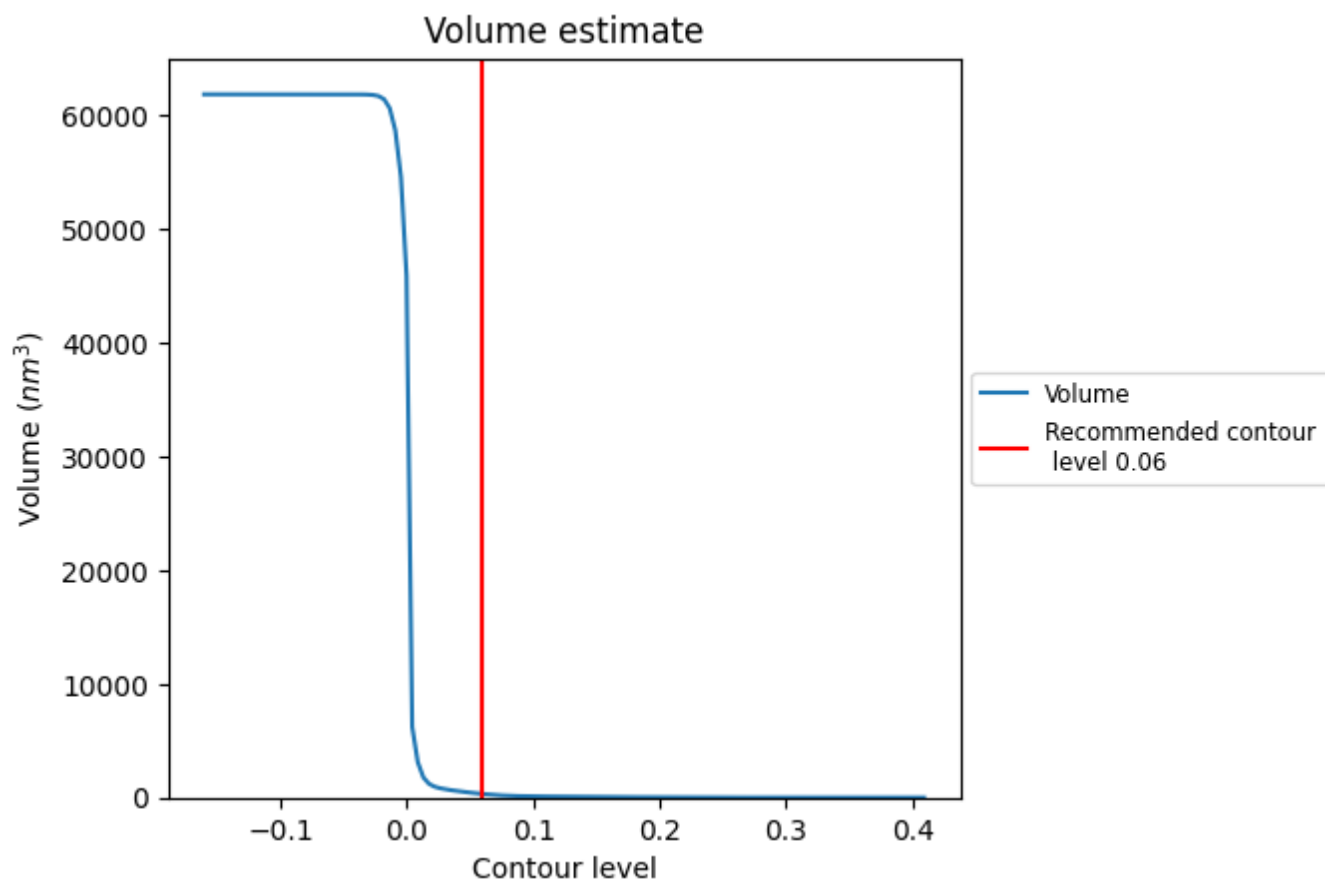
This section contains the results of statistical analysis of the map.

7.1 Map-value distribution [i](#)



The map-value distribution is plotted in 128 intervals along the x-axis. The y-axis is logarithmic. A spike in this graph at zero usually indicates that the volume has been masked.

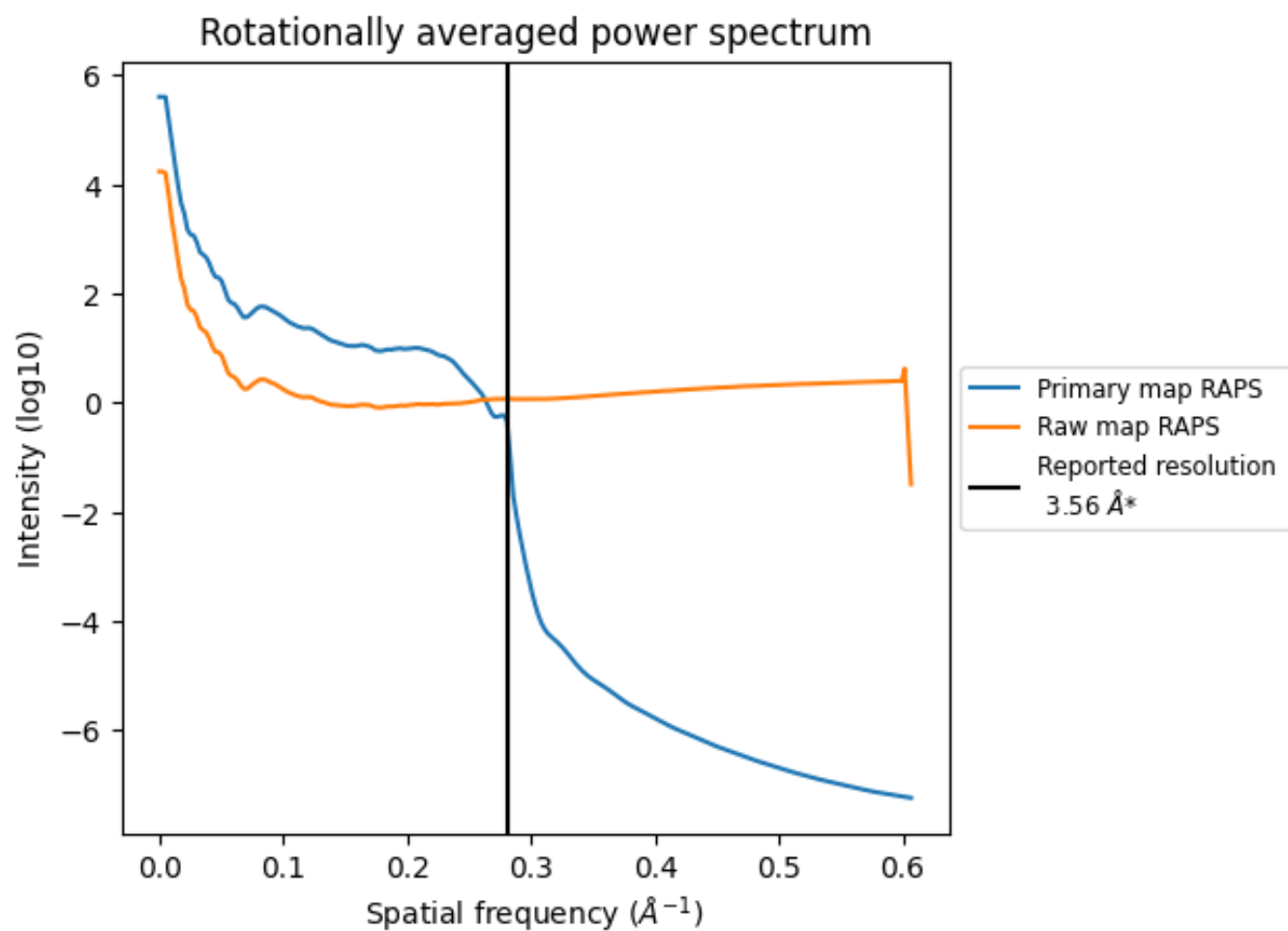
7.2 Volume estimate [i](#)



The volume at the recommended contour level is 319 nm³; this corresponds to an approximate mass of 288 kDa.

The volume estimate graph shows how the enclosed volume varies with the contour level. The recommended contour level is shown as a vertical line and the intersection between the line and the curve gives the volume of the enclosed surface at the given level.

7.3 Rotationally averaged power spectrum ⓘ

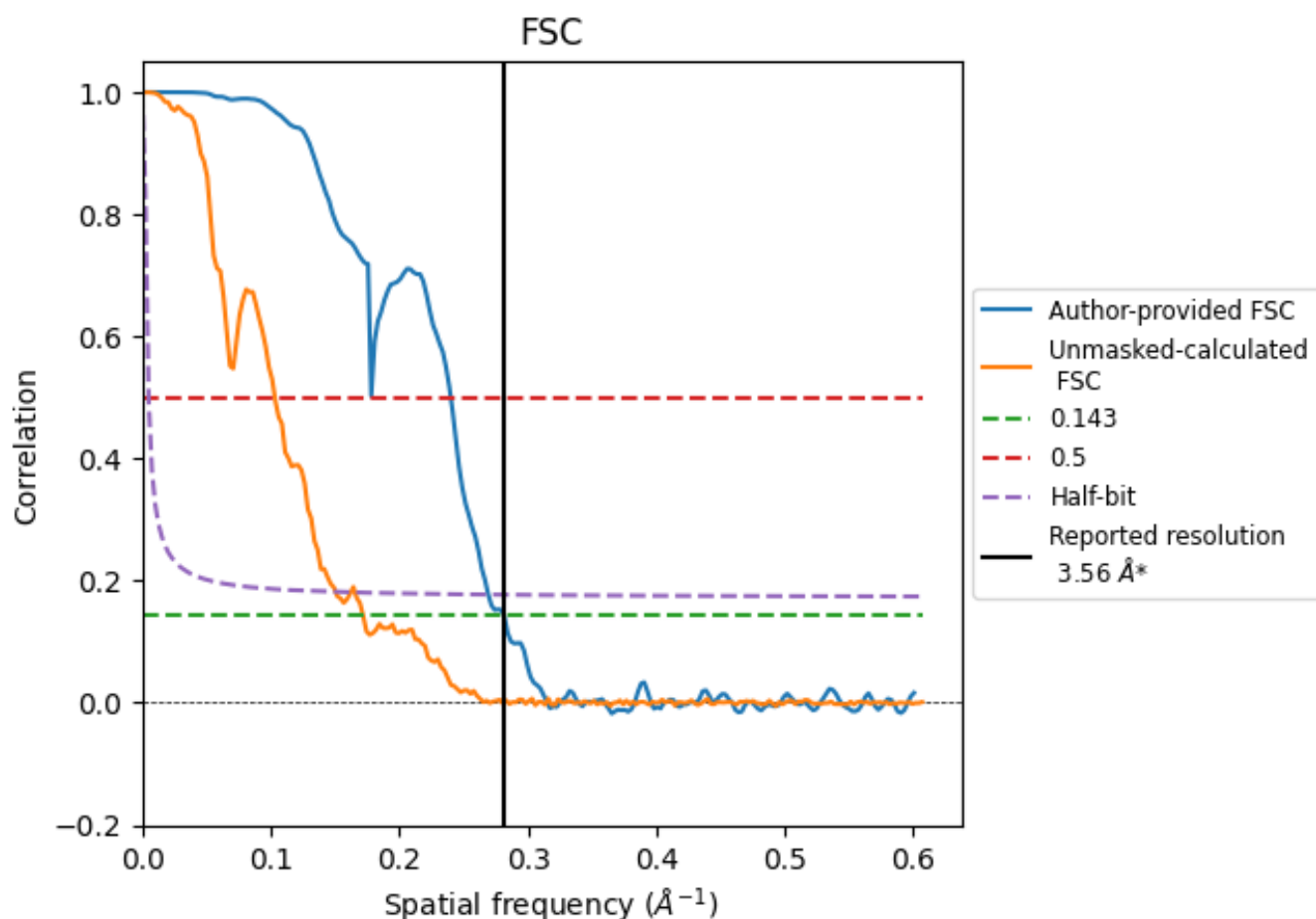


*Reported resolution corresponds to spatial frequency of 0.281 Å⁻¹

8 Fourier-Shell correlation [i](#)

Fourier-Shell Correlation (FSC) is the most commonly used method to estimate the resolution of single-particle and subtomogram-averaged maps. The shape of the curve depends on the imposed symmetry, mask and whether or not the two 3D reconstructions used were processed from a common reference. The reported resolution is shown as a black line. A curve is displayed for the half-bit criterion in addition to lines showing the 0.143 gold standard cut-off and 0.5 cut-off.

8.1 FSC [i](#)



*Reported resolution corresponds to spatial frequency of 0.281 \AA^{-1}

8.2 Resolution estimates

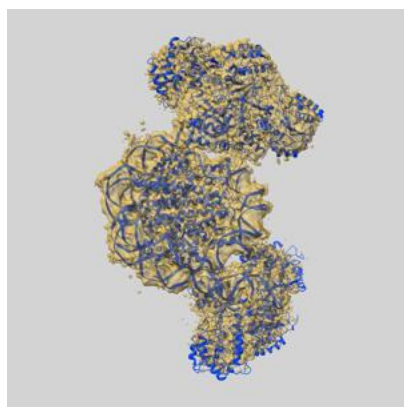
Resolution estimate (Å)	Estimation criterion (FSC cut-off)		
	0.143	0.5	Half-bit
Reported by author	3.56	-	-
Author-provided FSC curve	3.56	4.17	3.71
Unmasked-calculated*	5.82	9.69	6.64

*Resolution estimate based on FSC curve calculated by comparison of deposited half-maps. The value from deposited half-maps intersecting FSC 0.143 CUT-OFF 5.82 differs from the reported value 3.56 by more than 10 %

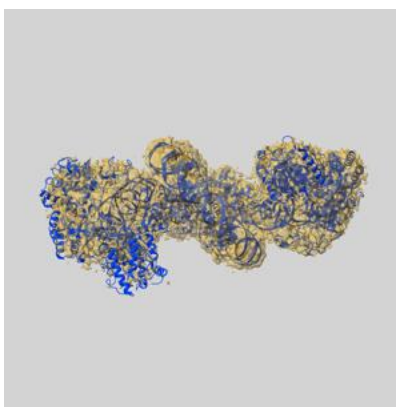
9 Map-model fit [i](#)

This section contains information regarding the fit between EMDB map EMD-52861 and PDB model 9IGX. Per-residue inclusion information can be found in section [3](#) on page [6](#).

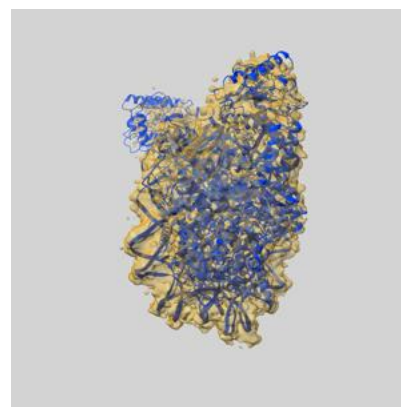
9.1 Map-model overlay [i](#)



X



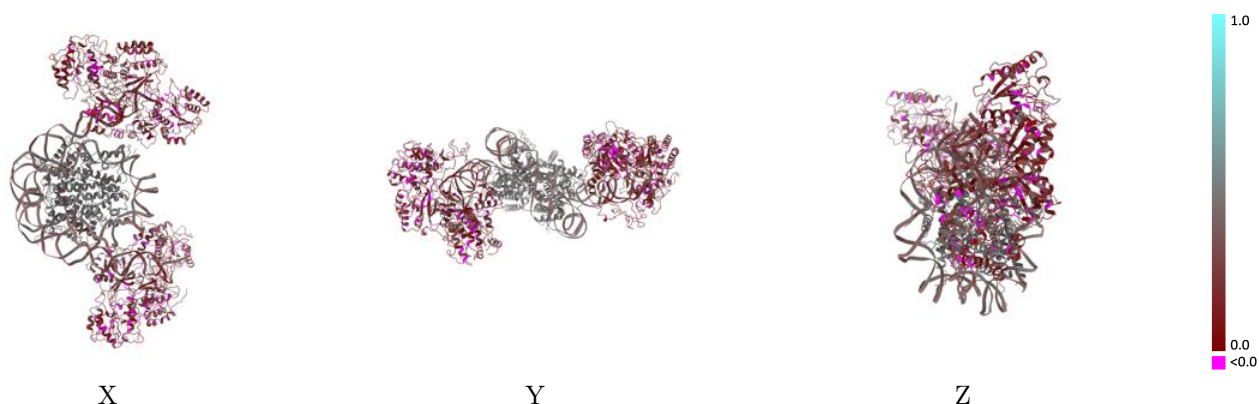
Y



Z

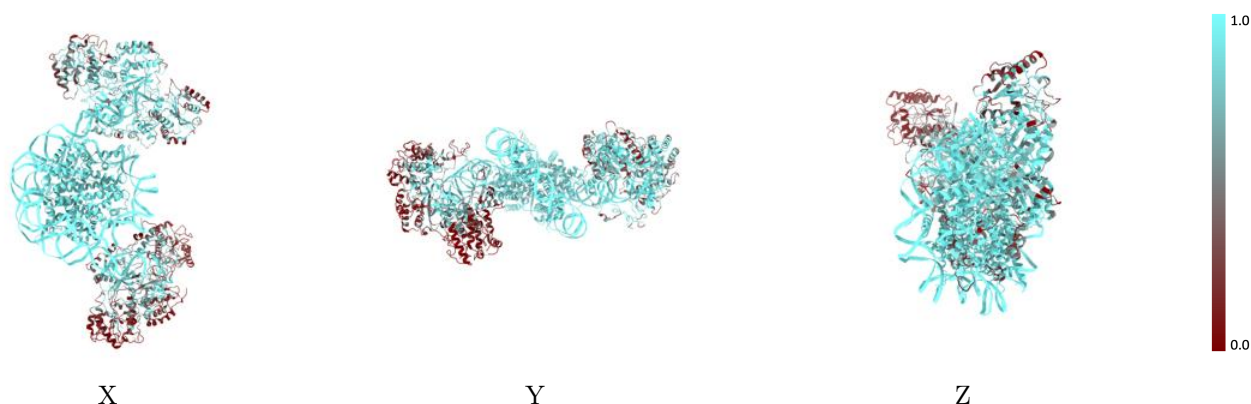
The images above show the 3D surface view of the map at the recommended contour level 0.06 at 50% transparency in yellow overlaid with a ribbon representation of the model coloured in blue. These images allow for the visual assessment of the quality of fit between the atomic model and the map.

9.2 Q-score mapped to coordinate model [i](#)



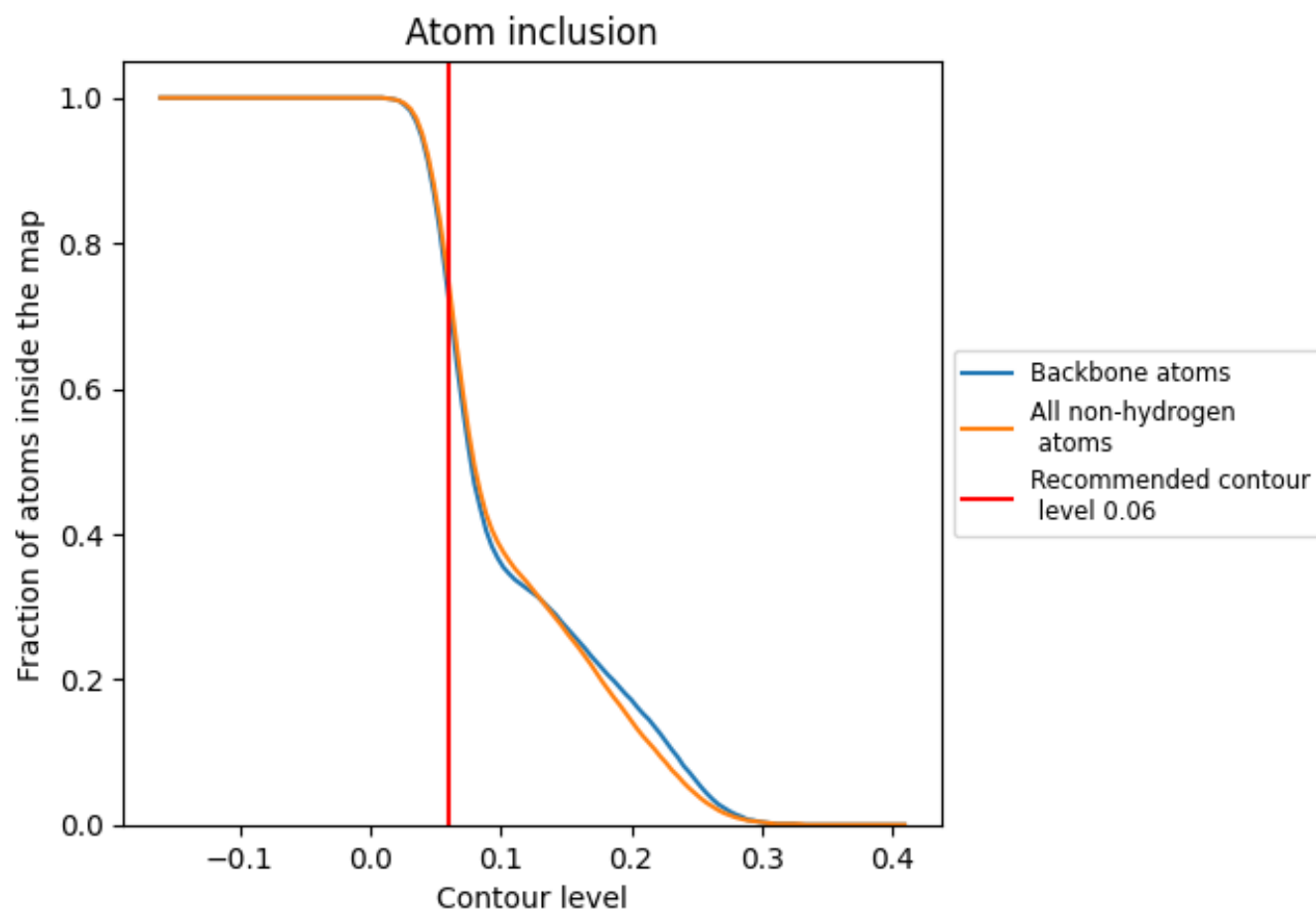
The images above show the model with each residue coloured according to its Q-score. This shows their resolvability in the map with higher Q-score values reflecting better resolvability. Please note: Q-score is calculating the resolvability of atoms, and thus high values are only expected at resolutions at which atoms can be resolved. Low Q-score values may therefore be expected for many entries.

9.3 Atom inclusion mapped to coordinate model [i](#)



The images above show the model with each residue coloured according to its atom inclusion. This shows to what extent they are inside the map at the recommended contour level (0.06).

9.4 Atom inclusion ⓘ



At the recommended contour level, 73% of all backbone atoms, 75% of all non-hydrogen atoms, are inside the map.

9.5 Map-model fit summary ⓘ

The table lists the average atom inclusion at the recommended contour level (0.06) and Q-score for the entire model and for each chain.

Chain	Atom inclusion	Q-score
All	<div></div> 0.7490	<div></div> 0.2930
A	<div></div> 0.9630	<div></div> 0.4670
B	<div></div> 0.9630	<div></div> 0.4640
C	<div></div> 0.9620	<div></div> 0.4640
D	<div></div> 0.9800	<div></div> 0.4500
E	<div></div> 0.9750	<div></div> 0.4640
F	<div></div> 0.9660	<div></div> 0.4650
G	<div></div> 0.9670	<div></div> 0.4660
H	<div></div> 0.9650	<div></div> 0.4560
I	<div></div> 0.9920	<div></div> 0.3680
J	<div></div> 0.9900	<div></div> 0.3690
K	<div></div> 0.7450	<div></div> 0.1960
L	<div></div> 0.7230	<div></div> 0.1990
M	<div></div> 0.3710	<div></div> 0.2040
N	<div></div> 0.4390	<div></div> 0.1880

