



# Full wwPDB X-ray Structure Validation Report ⓘ

Mar 8, 2026 – 12:05 PM UTC

PDB ID : 7I09 / pdb\_00007i09  
Title : PanDDA analysis group deposition – Crystal structure of Enterococcus faecium VatD in complex with ZINC000020269204  
Authors : Asthana, P.; Fraser, J.S.  
Deposited on : 2025-01-25  
Resolution : 2.04 Å(reported)

This is a Full wwPDB X-ray Structure Validation Report for a publicly released PDB entry.

We welcome your comments at [validation@mail.wwpdb.org](mailto:validation@mail.wwpdb.org)

A user guide is available at

<https://www.wwpdb.org/validation/2017/XrayValidationReportHelp>

with specific help available everywhere you see the ⓘ symbol.

The types of validation reports are described at

<http://www.wwpdb.org/validation/2017/FAQs#types>.

---

The following versions of software and data (see [references ⓘ](#)) were used in the production of this report:

MolProbity	:	4-5-2 with Phenix2.0
Mogul	:	2022.3.0, CSD as543be (2022)
Xtriage (Phenix)	:	2.0
EDS	:	3.0
Percentile statistics	:	20250101.v01 (using entries in the PDB archive January 1st 2025)
CCP4	:	9.0.010 (Gargrove)
Density-Fitness	:	1.0.12
Ideal geometry (proteins)	:	Engh & Huber (2001)
Ideal geometry (DNA, RNA)	:	Parkinson et al. (1996)
Validation Pipeline (wwPDB-VP)	:	2.49

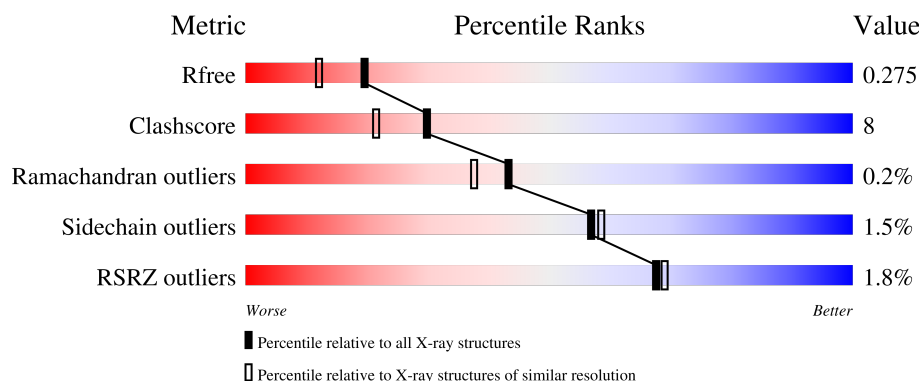
# 1 Overall quality at a glance

The following experimental techniques were used to determine the structure:

*X-RAY DIFFRACTION*

The reported resolution of this entry is 2.04 Å.

Percentile scores (ranging between 0-100) for global validation metrics of the entry are shown in the following graphic. The table shows the number of entries on which the scores are based.



Metric	Whole archive (#Entries)	Similar resolution (#Entries, resolution range(Å))
$R_{free}$	180053	2260 (2.04-2.04)
Clashscore	190562	2333 (2.04-2.04)
Ramachandran outliers	187476	2318 (2.04-2.04)
Sidechain outliers	187428	2318 (2.04-2.04)
RSRZ outliers	180081	2260 (2.04-2.04)

The table below summarises the geometric issues observed across the polymeric chains and their fit to the electron density. The red, orange, yellow and green segments of the lower bar indicate the fraction of residues that contain outliers for  $\geq 3$ , 2, 1 and 0 types of geometric quality criteria respectively. A grey segment represents the fraction of residues that are not modelled. The numeric value for each fraction is indicated below the corresponding segment, with a dot representing fractions  $\leq 5\%$ . The upper red bar (where present) indicates the fraction of residues that have poor fit to the electron density. The numeric value is given above the bar.

Mol	Chain	Length	Quality of chain
1	A	209	<div> <div>3%</div> <div>81%</div> <div>16%</div> <div>.</div> </div>
1	B	209	<div> <div>%</div> <div>84%</div> <div>13%</div> <div>.</div> </div>
1	C	209	<div> <div>%</div> <div>75%</div> <div>21%</div> <div>.</div> </div>

The following table lists non-polymeric compounds, carbohydrate monomers and non-standard residues in protein, DNA, RNA chains that are outliers for geometric or electron-density-fit criteria:

Mol	Type	Chain	Res	Chirality	Geometry	Clashes	Electron density
2	A1BUQ	A	401[B]	-	-	X	-
2	A1BUQ	B	301[B]	-	-	X	-
2	A1BUQ	C	301[B]	-	X	-	-

## 2 Entry composition [i](#)

There are 3 unique types of molecules in this entry. The entry contains 10266 atoms, of which 5128 are hydrogens and 0 are deuteriums.

In the tables below, the ZeroOcc column contains the number of atoms modelled with zero occupancy, the AltConf column contains the number of residues with at least one atom in alternate conformation and the Trace column contains the number of residues modelled with at most 2 atoms.

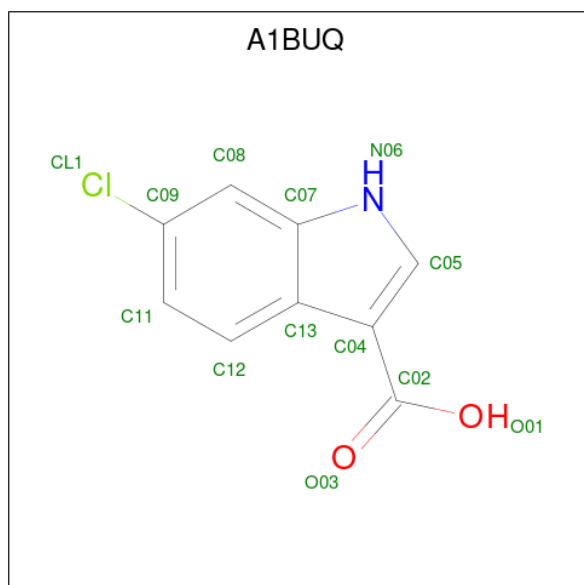
- Molecule 1 is a protein called Streptogramin A acetyltransferase.

Mol	Chain	Residues	Atoms						ZeroOcc	AltConf	Trace
1	A	203	Total	C	H	N	O	S	0	8	0
			3311	1066	1658	273	306	8			
1	B	203	Total	C	H	N	O	S	0	19	0
			3452	1109	1735	283	316	9			
1	C	202	Total	C	H	N	O	S	0	20	0
			3428	1100	1720	284	316	8			

There are 3 discrepancies between the modelled and reference sequences:

Chain	Residue	Modelled	Actual	Comment	Reference
A	1	GLY	-	expression tag	UNP P50870
B	1	GLY	-	expression tag	UNP P50870
C	1	GLY	-	expression tag	UNP P50870

- Molecule 2 is 6-chloro-1H-indole-3-carboxylic acid (CCD ID: A1BUQ) (formula:  $C_9H_6ClNO_2$ ).



Mol	Chain	Residues	Atoms						ZeroOcc	AltConf
2	A	1	Total 18	C 9	Cl 1	H 5	N 1	O 2	0	1
2	B	1	Total 18	C 9	Cl 1	H 5	N 1	O 2	0	1
2	C	1	Total 18	C 9	Cl 1	H 5	N 1	O 2	0	1

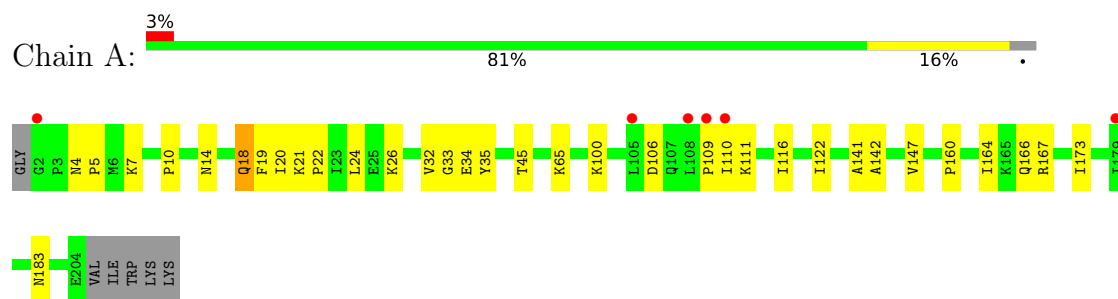
- Molecule 3 is water.

Mol	Chain	Residues	Atoms		ZeroOcc	AltConf
3	A	7	Total 7	O 7	0	7
3	B	9	Total 9	O 9	0	9
3	C	5	Total 5	O 5	0	5

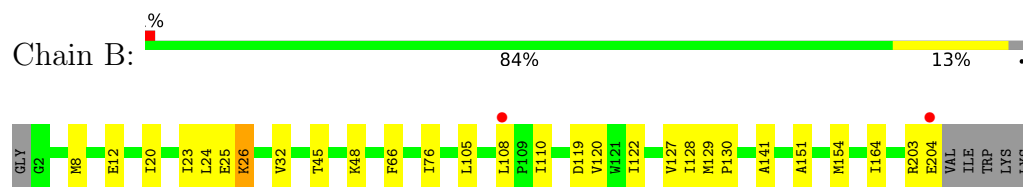
### 3 Residue-property plots [i](#)

These plots are drawn for all protein, RNA, DNA and oligosaccharide chains in the entry. The first graphic for a chain summarises the proportions of the various outlier classes displayed in the second graphic. The second graphic shows the sequence view annotated by issues in geometry and electron density. Residues are color-coded according to the number of geometric quality criteria for which they contain at least one outlier: green = 0, yellow = 1, orange = 2 and red = 3 or more. A red dot above a residue indicates a poor fit to the electron density ( $RSRZ > 2$ ). Stretches of 2 or more consecutive residues without any outlier are shown as a green connector. Residues present in the sample, but not in the model, are shown in grey.

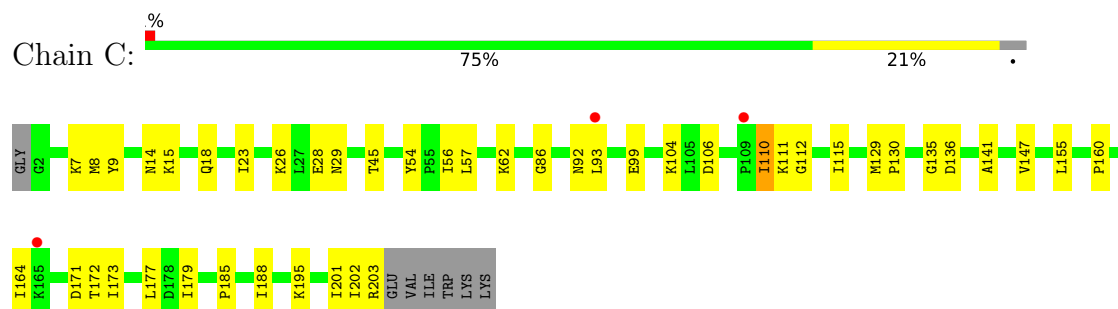
#### • Molecule 1: Streptogramin A acetyltransferase



#### • Molecule 1: Streptogramin A acetyltransferase



#### • Molecule 1: Streptogramin A acetyltransferase



## 4 Data and refinement statistics

Property	Value	Source
Space group	P 21 21 21	Depositor
Cell constants a, b, c, $\alpha$ , $\beta$ , $\gamma$	43.45Å 101.73Å 144.24Å 90.00° 90.00° 90.00°	Depositor
Resolution (Å)	47.97 – 2.04 47.97 – 2.04	Depositor EDS
% Data completeness (in resolution range)	99.8 (47.97-2.04) 99.7 (47.97-2.04)	Depositor EDS
$R_{merge}$	0.11	Depositor
$R_{sym}$	(Not available)	Depositor
$\langle I/\sigma(I) \rangle$ <sup>1</sup>	1.06 (at 2.05Å)	Xtriage
Refinement program	PHENIX 1.20.1_4487	Depositor
R, $R_{free}$	0.214 , 0.275 0.214 , 0.275	Depositor DCC
$R_{free}$ test set	2082 reflections (5.01%)	wwPDB-VP
Wilson B-factor (Å <sup>2</sup> )	44.0	Xtriage
Anisotropy	0.136	Xtriage
Bulk solvent $k_{sol}$ (e/Å <sup>3</sup> ), $B_{sol}$ (Å <sup>2</sup> )	0.38 , 29.0	EDS
L-test for twinning <sup>2</sup>	$\langle  L  \rangle = 0.48$ , $\langle L^2 \rangle = 0.31$	Xtriage
Estimated twinning fraction	No twinning to report.	Xtriage
$F_o, F_c$ correlation	0.96	EDS
Total number of atoms	10266	wwPDB-VP
Average B, all atoms (Å <sup>2</sup> )	59.0	wwPDB-VP

Xtriage's analysis on translational NCS is as follows: *The largest off-origin peak in the Patterson function is 4.83% of the height of the origin peak. No significant pseudotranslation is detected.*

<sup>1</sup>Intensities estimated from amplitudes.

<sup>2</sup>Theoretical values of  $\langle |L| \rangle$ ,  $\langle L^2 \rangle$  for acentric reflections are 0.5, 0.333 respectively for untwinned datasets, and 0.375, 0.2 for perfectly twinned datasets.

## 5 Model quality

### 5.1 Standard geometry

Bond lengths and bond angles in the following residue types are not validated in this section: A1BUQ

The Z score for a bond length (or angle) is the number of standard deviations the observed value is removed from the expected value. A bond length (or angle) with  $|Z| > 5$  is considered an outlier worth inspection. RMSZ is the root-mean-square of all Z scores of the bond lengths (or angles).

Mol	Chain	Bond lengths		Bond angles	
		RMSZ	# Z  >5	RMSZ	# Z  >5
1	A	0.63	0/1709	0.73	0/2319
1	B	0.70	0/1777	0.81	0/2412
1	C	0.56	0/1779	0.67	0/2413
All	All	0.63	0/5265	0.74	0/7144

There are no bond length outliers.

There are no bond angle outliers.

There are no chirality outliers.

There are no planarity outliers.

### 5.2 Too-close contacts

In the following table, the Non-H and H(model) columns list the number of non-hydrogen atoms and hydrogen atoms in the chain respectively. The H(added) column lists the number of hydrogen atoms added and optimized by MolProbity. The Clashes column lists the number of clashes within the asymmetric unit, whereas Symm-Clashes lists symmetry-related clashes.

Mol	Chain	Non-H	H(model)	H(added)	Clashes	Symm-Clashes
1	A	1653	1658	1646	25	0
1	B	1717	1735	1719	27	0
1	C	1708	1720	1693	36	0
2	A	13	5	0	7	0
2	B	13	5	0	4	0
2	C	13	5	0	3	0
3	A	7	0	0	4	0
3	B	9	0	0	2	0
3	C	5	0	0	4	0
All	All	5138	5128	5058	87	0



The all-atom clashscore is defined as the number of clashes found per 1000 atoms (including hydrogen atoms). The all-atom clashscore for this structure is 8.

All (87) close contacts within the same asymmetric unit are listed below, sorted by their clash magnitude.

Atom-1	Atom-2	Interatomic distance (Å)	Clash overlap (Å)
1:A:122:ILE:HG13	3:A:507[B]:HOH:O	1.77	0.83
1:B:204:GLU:O	3:B:401[B]:HOH:O	2.02	0.78
2:A:401[B]:A1BUQ:C11	1:C:147[B]:VAL:HG11	2.15	0.77
1:C:56:ILE:HG23	3:C:401[B]:HOH:O	1.90	0.72
1:B:203:ARG:HH11	1:B:203:ARG:HG3	1.56	0.71
1:B:127:VAL:HG12	1:B:129[B]:MET:HE3	1.75	0.69
1:C:195:LYS:HE2	3:C:405[B]:HOH:O	1.93	0.68
1:B:20:ILE:HG22	1:B:32:VAL:HG11	1.76	0.68
1:B:25:GLU:O	1:B:26:LYS:HB2	1.94	0.67
1:A:14:ASN:O	3:A:501[B]:HOH:O	2.13	0.66
1:C:171:ASP:OD1	1:C:172:THR:N	2.29	0.66
1:C:203:ARG:HG2	3:C:405[B]:HOH:O	1.95	0.66
1:A:7:LYS:HD3	1:A:10:PRO:HA	1.79	0.64
1:A:166:GLN:HG2	1:A:173:ILE:HD11	1.81	0.63
1:C:57:LEU:CD2	1:C:110:ILE:HD11	2.29	0.62
1:A:24:LEU:HD12	1:A:32:VAL:HG21	1.83	0.59
1:A:116:ILE:HD13	3:A:507[B]:HOH:O	2.01	0.59
1:A:109:PRO:O	1:A:111:LYS:HG3	2.03	0.59
1:C:104:LYS:HG3	1:C:106:ASP:OD1	2.04	0.57
1:B:129[B]:MET:HE2	1:B:129[B]:MET:HA	1.85	0.57
1:C:57:LEU:HD22	1:C:110:ILE:HD11	1.85	0.57
1:A:111:LYS:HA	3:A:503[B]:HOH:O	2.04	0.57
1:C:9:TYR:CG	1:C:15:LYS:HD2	2.41	0.56
1:C:92:ASN:OD1	1:C:93:LEU:HD12	2.07	0.55
1:B:66:PHE:O	1:B:119:ASP:HA	2.07	0.54
1:A:106:ASP:N	1:A:106:ASP:OD1	2.40	0.54
2:A:401[B]:A1BUQ:C12	1:C:147[B]:VAL:HG11	2.38	0.54
1:C:185:PRO:HD2	1:C:188:ILE:HD12	1.89	0.54
1:B:76:ILE:HG13	1:B:129[B]:MET:CE	2.39	0.53
1:C:62:LYS:HE3	1:C:115:ILE:HG23	1.92	0.52
1:A:142:ALA:O	2:A:401[B]:A1BUQ:CL1	2.64	0.52
1:A:160[B]:PRO:HG3	2:B:301[B]:A1BUQ:C12	2.40	0.52
1:B:151:ALA:HB3	1:B:154:MET:HG3	1.92	0.51
1:A:164:ILE:HD13	2:A:401[B]:A1BUQ:O01	2.10	0.51
1:C:141[B]:ALA:HB1	2:C:301[B]:A1BUQ:C08	2.40	0.51
1:C:195:LYS:HB3	1:C:201:ILE:HG23	1.92	0.51
1:B:105:LEU:HA	1:B:108:LEU:HD12	1.94	0.50

*Continued on next page...*

*Continued from previous page...*

Atom-1	Atom-2	Interatomic distance (Å)	Clash overlap (Å)
1:C:155:LEU:HG	1:C:164[B]:ILE:HD12	1.94	0.50
1:B:8:MET:HG3	1:B:23:ILE:CG1	2.43	0.49
1:A:18:GLN:HE22	1:A:45:THR:HA	1.78	0.48
1:B:24:LEU:HD12	1:B:32:VAL:HG21	1.96	0.48
1:B:127:VAL:CG1	1:B:129[B]:MET:HE3	2.40	0.48
1:C:18:GLN:HE22	1:C:45:THR:HA	1.79	0.48
1:A:33:GLY:HA3	1:A:65:LYS:HG2	1.96	0.48
1:A:21:LYS:HB3	1:A:22:PRO:CD	2.43	0.48
1:B:141[B]:ALA:HB1	2:B:301[B]:A1BUQ:CL1	2.51	0.48
1:C:173:ILE:O	1:C:177:LEU:HD23	2.14	0.48
1:C:155:LEU:O	1:C:164[B]:ILE:HB	2.14	0.47
1:C:28:GLU:HG2	1:C:29:ASN:ND2	2.30	0.47
1:A:167:ARG:NH2	1:C:86:GLY:O	2.47	0.47
1:C:8:MET:HG2	1:C:23:ILE:HG12	1.97	0.47
1:B:129[B]:MET:SD	2:C:301[B]:A1BUQ:CL1	3.10	0.46
1:A:21:LYS:HB3	1:A:22:PRO:HD3	1.97	0.46
1:B:25:GLU:HA	3:B:402[B]:HOH:O	2.16	0.46
1:C:141[B]:ALA:HB1	2:C:301[B]:A1BUQ:C09	2.46	0.46
1:C:14:ASN:O	1:C:15:LYS:HD3	2.16	0.45
1:B:12:GLU:HA	1:B:12:GLU:OE1	2.17	0.45
1:B:8:MET:HG3	1:B:23:ILE:HG13	1.98	0.45
1:B:203:ARG:HG3	1:B:203:ARG:NH1	2.29	0.45
1:A:147[B]:VAL:HG11	2:B:301[B]:A1BUQ:C09	2.47	0.44
1:B:129[A]:MET:HB3	1:B:130[A]:PRO:CD	2.47	0.44
1:C:111:LYS:HD3	1:C:130:PRO:HB2	1.99	0.44
1:C:54:TYR:HB3	3:C:401[B]:HOH:O	2.18	0.43
1:A:19:PHE:HD1	1:A:19:PHE:HA	1.77	0.43
1:B:76:ILE:HG13	1:B:129[B]:MET:HE1	1.99	0.43
1:B:122:ILE:HD13	1:B:128[A]:ILE:HD11	2.00	0.43
1:C:171:ASP:OD1	1:C:171:ASP:C	2.62	0.43
1:C:26:LYS:H	1:C:26:LYS:CD	2.32	0.43
1:B:45:THR:OG1	1:B:48:LYS:HE2	2.19	0.43
1:C:110:ILE:HG23	1:C:112:GLY:H	1.84	0.43
1:C:129:MET:HB3	1:C:130:PRO:CD	2.49	0.42
1:A:109:PRO:O	1:A:110:ILE:C	2.62	0.42
1:C:179:ILE:HD11	1:C:201:ILE:HD12	2.00	0.42
2:A:401[B]:A1BUQ:C09	1:C:147[B]:VAL:HG11	2.50	0.42
1:A:65:LYS:NZ	1:A:183:ASN:HA	2.35	0.42
2:A:401[B]:A1BUQ:N06	1:C:160[B]:PRO:HB3	2.35	0.41
1:A:34:GLU:HB3	1:A:35:TYR:CD2	2.56	0.41
1:C:172:THR:HG23	1:C:202:ILE:HD13	2.02	0.41

*Continued on next page...*

Continued from previous page...

Atom-1	Atom-2	Interatomic distance (Å)	Clash overlap (Å)
1:C:135:GLY:O	1:C:136:ASP:C	2.64	0.41
1:A:20:ILE:HG22	1:A:32:VAL:HG11	2.03	0.41
1:B:128[B]:ILE:HD13	1:B:128[B]:ILE:HG21	1.80	0.41
1:C:9:TYR:CD1	1:C:15:LYS:HA	2.56	0.41
1:B:25:GLU:O	1:B:26:LYS:CB	2.63	0.40
1:B:154:MET:HE3	1:B:154:MET:HB3	2.00	0.40
1:B:164:ILE:HG12	2:B:301[B]:A1BUQ:C02	2.51	0.40
1:A:141:ALA:HB1	2:A:401[B]:A1BUQ:CL1	2.57	0.40
1:A:4:ASN:OD1	1:A:5:PRO:HD2	2.21	0.40

There are no symmetry-related clashes.

## 5.3 Torsion angles [i](#)

### 5.3.1 Protein backbone [i](#)

In the following table, the Percentiles column shows the percent Ramachandran outliers of the chain as a percentile score with respect to all X-ray entries followed by that with respect to entries of similar resolution.

The Analysed column shows the number of residues for which the backbone conformation was analysed, and the total number of residues.

Mol	Chain	Analysed	Favoured	Allowed	Outliers	Percentiles	
1	A	209/209 (100%)	195 (93%)	14 (7%)	0	100	100
1	B	220/209 (105%)	214 (97%)	5 (2%)	1 (0%)	24	16
1	C	220/209 (105%)	205 (93%)	15 (7%)	0	100	100
All	All	649/627 (104%)	614 (95%)	34 (5%)	1 (0%)	43	37

All (1) Ramachandran outliers are listed below:

Mol	Chain	Res	Type
1	B	26	LYS

### 5.3.2 Protein sidechains [i](#)

In the following table, the Percentiles column shows the percent sidechain outliers of the chain as a percentile score with respect to all X-ray entries followed by that with respect to entries of similar resolution.

The Analysed column shows the number of residues for which the sidechain conformation was analysed, and the total number of residues.

Mol	Chain	Analysed	Rotameric	Outliers	Percentiles	
1	A	184/182 (101%)	181 (98%)	3 (2%)	55	56
1	B	190/182 (104%)	188 (99%)	2 (1%)	65	68
1	C	190/182 (104%)	187 (98%)	3 (2%)	55	56
All	All	564/546 (103%)	556 (99%)	8 (1%)	57	60

All (8) residues with a non-rotameric sidechain are listed below:

Mol	Chain	Res	Type
1	A	18	GLN
1	A	26	LYS
1	A	100	LYS
1	B	110	ILE
1	B	120	VAL
1	C	7	LYS
1	C	99	GLU
1	C	110	ILE

Sometimes sidechains can be flipped to improve hydrogen bonding and reduce clashes. All (8) such sidechains are listed below:

Mol	Chain	Res	Type
1	A	42	ASN
1	A	170	GLN
1	B	170	GLN
1	C	18	GLN
1	C	42	ASN
1	C	58	ASN
1	C	96	ASN
1	C	175	GLN

### 5.3.3 RNA ⓘ

There are no RNA molecules in this entry.

## 5.4 Non-standard residues in protein, DNA, RNA chains ⓘ

There are no non-standard protein/DNA/RNA residues in this entry.

## 5.5 Carbohydrates [i](#)

There are no oligosaccharides in this entry.

## 5.6 Ligand geometry [i](#)

3 ligands are modelled in this entry.

In the following table, the Counts columns list the number of bonds (or angles) for which Mogul statistics could be retrieved, the number of bonds (or angles) that are observed in the model and the number of bonds (or angles) that are defined in the Chemical Component Dictionary. The Link column lists molecule types, if any, to which the group is linked. The Z score for a bond length (or angle) is the number of standard deviations the observed value is removed from the expected value. A bond length (or angle) with  $|Z| > 2$  is considered an outlier worth inspection. RMSZ is the root-mean-square of all Z scores of the bond lengths (or angles).

Mol	Type	Chain	Res	Link	Bond lengths			Bond angles		
					Counts	RMSZ	$\# Z  > 2$	Counts	RMSZ	$\# Z  > 2$
2	A1BUQ	C	301[B]	-	14,14,14	1.79	3 (21%)	20,20,20	2.29	9 (45%)
2	A1BUQ	B	301[B]	-	14,14,14	1.68	4 (28%)	20,20,20	2.16	7 (35%)
2	A1BUQ	A	401[B]	-	14,14,14	1.89	5 (35%)	20,20,20	2.43	6 (30%)

In the following table, the Chirals column lists the number of chiral outliers, the number of chiral centers analysed, the number of these observed in the model and the number defined in the Chemical Component Dictionary. Similar counts are reported in the Torsion and Rings columns. '-' means no outliers of that kind were identified.

Mol	Type	Chain	Res	Link	Chirals	Torsions	Rings
2	A1BUQ	C	301[B]	-	-	4/4/4/4	0/2/2/2
2	A1BUQ	B	301[B]	-	-	0/4/4/4	0/2/2/2
2	A1BUQ	A	401[B]	-	-	4/4/4/4	0/2/2/2

All (12) bond length outliers are listed below:

Mol	Chain	Res	Type	Atoms	Z	Observed(Å)	Ideal(Å)
2	C	301[B]	A1BUQ	C05-N06	-4.09	1.30	1.37
2	B	301[B]	A1BUQ	C05-N06	-3.65	1.31	1.37
2	C	301[B]	A1BUQ	C07-N06	-3.38	1.32	1.37
2	A	401[B]	A1BUQ	C13-C04	-3.28	1.39	1.45
2	A	401[B]	A1BUQ	C05-N06	-3.25	1.31	1.37
2	A	401[B]	A1BUQ	C13-C07	-2.75	1.38	1.41
2	B	301[B]	A1BUQ	C04-C02	2.69	1.53	1.48
2	A	401[B]	A1BUQ	C04-C02	2.66	1.53	1.48

*Continued on next page...*

*Continued from previous page...*

Mol	Chain	Res	Type	Atoms	Z	Observed(Å)	Ideal(Å)
2	C	301[B]	A1BUQ	C04-C02	2.32	1.53	1.48
2	A	401[B]	A1BUQ	C07-N06	-2.32	1.34	1.37
2	B	301[B]	A1BUQ	C09-CL1	2.22	1.79	1.74
2	B	301[B]	A1BUQ	C07-N06	-2.18	1.34	1.37

All (22) bond angle outliers are listed below:

Mol	Chain	Res	Type	Atoms	Z	Observed(°)	Ideal(°)
2	A	401[B]	A1BUQ	C05-C04-C02	5.05	130.27	124.82
2	B	301[B]	A1BUQ	C05-C04-C02	-5.03	119.39	124.82
2	A	401[B]	A1BUQ	C08-C07-C13	-4.68	118.79	122.52
2	C	301[B]	A1BUQ	C11-C09-CL1	4.45	125.92	119.36
2	A	401[B]	A1BUQ	O01-C02-C04	4.06	123.89	115.83
2	C	301[B]	A1BUQ	C08-C09-CL1	-4.05	114.09	119.17
2	C	301[B]	A1BUQ	C07-C13-C04	-3.99	104.07	106.62
2	C	301[B]	A1BUQ	C05-C04-C02	-3.75	120.78	124.82
2	B	301[B]	A1BUQ	C07-N06-C05	3.50	112.19	109.08
2	A	401[B]	A1BUQ	C04-C05-N06	-3.49	107.85	110.22
2	B	301[B]	A1BUQ	C13-C04-C02	3.45	134.99	126.97
2	A	401[B]	A1BUQ	C07-N06-C05	3.04	111.78	109.08
2	C	301[B]	A1BUQ	C13-C07-N06	3.01	110.03	107.52
2	B	301[B]	A1BUQ	C12-C13-C07	-2.94	115.79	118.84
2	A	401[B]	A1BUQ	O01-C02-O03	-2.79	117.25	123.90
2	B	301[B]	A1BUQ	O01-C02-O03	-2.53	117.87	123.90
2	C	301[B]	A1BUQ	C13-C04-C02	2.51	132.81	126.97
2	B	301[B]	A1BUQ	C11-C09-C08	-2.46	118.31	121.53
2	B	301[B]	A1BUQ	C12-C13-C04	2.29	138.01	133.81
2	C	301[B]	A1BUQ	C12-C13-C04	2.24	137.93	133.81
2	C	301[B]	A1BUQ	O01-C02-O03	-2.23	118.60	123.90
2	C	301[B]	A1BUQ	C08-C07-N06	-2.04	128.48	131.62

There are no chirality outliers.

All (8) torsion outliers are listed below:

Mol	Chain	Res	Type	Atoms
2	A	401[B]	A1BUQ	O01-C02-C04-C13
2	A	401[B]	A1BUQ	O01-C02-C04-C05
2	A	401[B]	A1BUQ	O03-C02-C04-C13
2	A	401[B]	A1BUQ	O03-C02-C04-C05
2	C	301[B]	A1BUQ	O01-C02-C04-C13
2	C	301[B]	A1BUQ	O01-C02-C04-C05
2	C	301[B]	A1BUQ	O03-C02-C04-C13

*Continued on next page...*

*Continued from previous page...*

Mol	Chain	Res	Type	Atoms
2	C	301[B]	A1BUQ	O03-C02-C04-C05

There are no ring outliers.

3 monomers are involved in 14 short contacts:

Mol	Chain	Res	Type	Clashes	Symm-Clashes
2	C	301[B]	A1BUQ	3	0
2	B	301[B]	A1BUQ	4	0
2	A	401[B]	A1BUQ	7	0

## 5.7 Other polymers [i](#)

There are no such residues in this entry.

## 5.8 Polymer linkage issues [i](#)

There are no chain breaks in this entry.

## 6 Fit of model and data [i](#)

### 6.1 Protein, DNA and RNA chains [i](#)

In the following table, the column labelled ‘#RSRZ > 2’ contains the number (and percentage) of RSRZ outliers, followed by percent RSRZ outliers for the chain as percentile scores relative to all X-ray entries and entries of similar resolution. The OWAB column contains the minimum, median, 95<sup>th</sup> percentile and maximum values of the occupancy-weighted average B-factor per residue. The column labelled ‘Q < 0.9’ lists the number of (and percentage) of residues with an average occupancy less than 0.9.

Mol	Chain	Analysed	<RSRZ>	#RSRZ > 2			OWAB(Å <sup>2</sup> )	Q < 0.9
1	A	203/209 (97%)	0.16	6 (2%)	52	53	19, 56, 95, 131	6 (2%)
1	B	203/209 (97%)	-0.06	2 (0%)	79	81	18, 49, 80, 114	16 (7%)
1	C	202/209 (96%)	0.34	3 (1%)	72	73	20, 60, 98, 117	16 (7%)
All	All	608/627 (96%)	0.15	11 (1%)	67	69	18, 55, 96, 131	38 (6%)

All (11) RSRZ outliers are listed below:

Mol	Chain	Res	Type	RSRZ
1	A	110	ILE	3.7
1	A	108	LEU	3.0
1	A	105	LEU	2.9
1	A	109	PRO	2.7
1	C	109	PRO	2.5
1	B	204	GLU	2.4
1	C	165[A]	LYS	2.3
1	C	93	LEU	2.3
1	B	108	LEU	2.0
1	A	2	GLY	2.0
1	A	179	ILE	2.0

### 6.2 Non-standard residues in protein, DNA, RNA chains [i](#)

There are no non-standard protein/DNA/RNA residues in this entry.

### 6.3 Carbohydrates [i](#)

There are no oligosaccharides in this entry.



## 6.4 Ligands [i](#)

In the following table, the Atoms column lists the number of modelled atoms in the group and the number defined in the chemical component dictionary. The B-factors column lists the minimum, median, 95<sup>th</sup> percentile and maximum values of B factors of atoms in the group. The column labelled 'Q<0.9' lists the number of atoms with occupancy less than 0.9.

Mol	Type	Chain	Res	Atoms	RSCC	RSR	B-factors(Å <sup>2</sup> )	Q<0.9
2	A1BUQ	B	301[B]	13/13	0.61	0.34	37,60,93,95	18
2	A1BUQ	C	301[B]	13/13	0.63	0.38	50,72,88,95	18
2	A1BUQ	A	401[B]	13/13	0.81	0.31	36,62,94,121	18

## 6.5 Other polymers [i](#)

There are no such residues in this entry.