



Full wwPDB X-ray Structure Validation Report ⓘ

Mar 9, 2026 – 10:52 AM UTC

PDB ID : 9HYH / pdb_00009hyh
Title : Protein kinase CK2 catalytic subunit alpha (CSNK2A1 gene product) in complex with F2X-Entry screen fragment D02 and CX-4945 (Silmitasertib)
Authors : Werner, C.; Harasimowicz, H.; Barthel, T.; Weiss, M.S.; Niefind, K.
Deposited on : 2025-01-10
Resolution : 1.96 Å(reported)

This is a Full wwPDB X-ray Structure Validation Report for a publicly released PDB entry.

We welcome your comments at validation@mail.wwpdb.org

A user guide is available at

<https://www.wwpdb.org/validation/2017/XrayValidationReportHelp>

with specific help available everywhere you see the ⓘ symbol.

The types of validation reports are described at

<http://www.wwpdb.org/validation/2017/FAQs#types>.

The following versions of software and data (see [references ⓘ](#)) were used in the production of this report:

MolProbity	:	4-5-2 with Phenix2.0
Mogul	:	2022.3.0, CSD as543be (2022)
Xtriage (Phenix)	:	2.0
EDS	:	3.0
Buster-report	:	wwPDB partial adaption of 1.1.7 (2018)
Percentile statistics	:	20250101.v01 (using entries in the PDB archive January 1st 2025)
CCP4	:	9.0.010 (Gargrove)
Density-Fitness	:	1.0.12
Ideal geometry (proteins)	:	Engh & Huber (2001)
Ideal geometry (DNA, RNA)	:	Parkinson et al. (1996)
Validation Pipeline (wwPDB-VP)	:	2.49

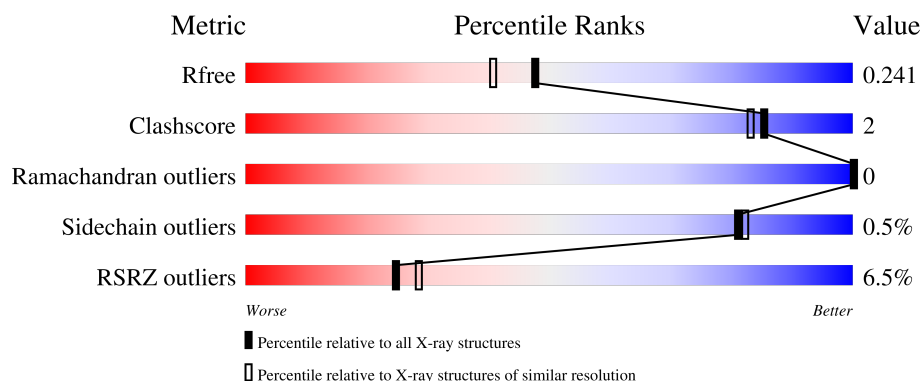
1 Overall quality at a glance

The following experimental techniques were used to determine the structure:

X-RAY DIFFRACTION

The reported resolution of this entry is 1.96 Å.

Percentile scores (ranging between 0-100) for global validation metrics of the entry are shown in the following graphic. The table shows the number of entries on which the scores are based.



Metric	Whole archive (#Entries)	Similar resolution (#Entries, resolution range(Å))
R_{free}	180053	3494 (1.96-1.96)
Clashscore	190562	3612 (1.96-1.96)
Ramachandran outliers	187476	3587 (1.96-1.96)
Sidechain outliers	187428	3587 (1.96-1.96)
RSRZ outliers	180081	3495 (1.96-1.96)

The table below summarises the geometric issues observed across the polymeric chains and their fit to the electron density. The red, orange, yellow and green segments of the lower bar indicate the fraction of residues that contain outliers for ≥ 3 , 2, 1 and 0 types of geometric quality criteria respectively. A grey segment represents the fraction of residues that are not modelled. The numeric value for each fraction is indicated below the corresponding segment, with a dot representing fractions $\leq 5\%$. The upper red bar (where present) indicates the fraction of residues that have poor fit to the electron density. The numeric value is given above the bar.

Mol	Chain	Length	Quality of chain
1	A	355	<div> <div>5%</div> <div> <div></div> <div>86%</div> <div>7%</div> <div>6%</div> </div> </div>
1	B	355	<div> <div>7%</div> <div> <div></div> <div>87%</div> <div>6%</div> <div>7%</div> </div> </div>

2 Entry composition

There are 4 unique types of molecules in this entry. The entry contains 6122 atoms, of which 0 are hydrogens and 0 are deuteriums.

In the tables below, the ZeroOcc column contains the number of atoms modelled with zero occupancy, the AltConf column contains the number of residues with at least one atom in alternate conformation and the Trace column contains the number of residues modelled with at most 2 atoms.

- Molecule 1 is a protein called Casein kinase II subunit alpha.

Mol	Chain	Residues	Atoms					ZeroOcc	AltConf	Trace
1	A	332	Total	C	N	O	S	0	3	0
			2826	1807	498	509	12			
1	B	331	Total	C	N	O	S	0	2	0
			2807	1796	493	507	11			

There are 40 discrepancies between the modelled and reference sequences:

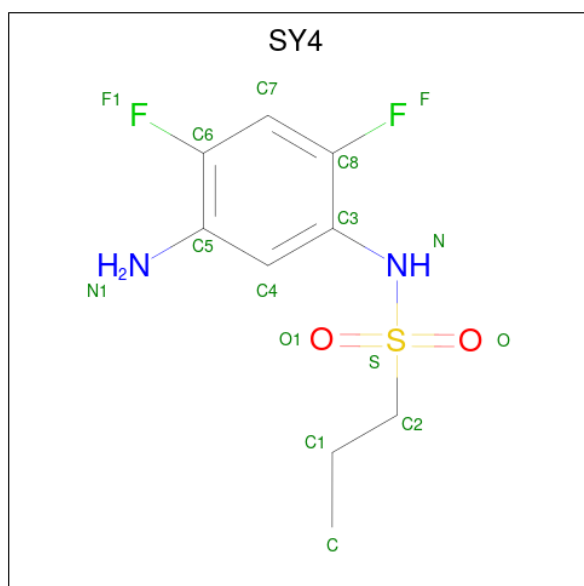
Chain	Residue	Modelled	Actual	Comment	Reference
A	-19	MET	-	initiating methionine	UNP P68400
A	-18	GLY	-	expression tag	UNP P68400
A	-17	SER	-	expression tag	UNP P68400
A	-16	SER	-	expression tag	UNP P68400
A	-15	HIS	-	expression tag	UNP P68400
A	-14	HIS	-	expression tag	UNP P68400
A	-13	HIS	-	expression tag	UNP P68400
A	-12	HIS	-	expression tag	UNP P68400
A	-11	HIS	-	expression tag	UNP P68400
A	-10	HIS	-	expression tag	UNP P68400
A	-9	SER	-	expression tag	UNP P68400
A	-8	SER	-	expression tag	UNP P68400
A	-7	GLY	-	expression tag	UNP P68400
A	-6	LEU	-	expression tag	UNP P68400
A	-5	VAL	-	expression tag	UNP P68400
A	-4	PRO	-	expression tag	UNP P68400
A	-3	ARG	-	expression tag	UNP P68400
A	-2	GLY	-	expression tag	UNP P68400
A	-1	SER	-	expression tag	UNP P68400
A	0	HIS	-	expression tag	UNP P68400
B	-19	MET	-	initiating methionine	UNP P68400
B	-18	GLY	-	expression tag	UNP P68400
B	-17	SER	-	expression tag	UNP P68400
B	-16	SER	-	expression tag	UNP P68400
B	-15	HIS	-	expression tag	UNP P68400

Continued on next page...

Continued from previous page...

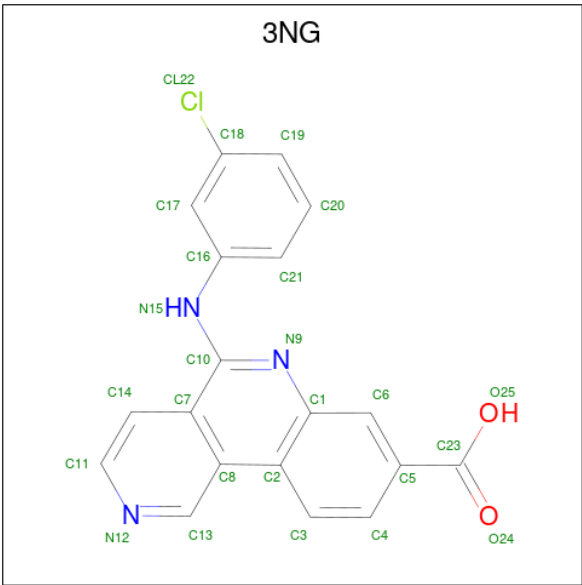
Chain	Residue	Modelled	Actual	Comment	Reference
B	-14	HIS	-	expression tag	UNP P68400
B	-13	HIS	-	expression tag	UNP P68400
B	-12	HIS	-	expression tag	UNP P68400
B	-11	HIS	-	expression tag	UNP P68400
B	-10	HIS	-	expression tag	UNP P68400
B	-9	SER	-	expression tag	UNP P68400
B	-8	SER	-	expression tag	UNP P68400
B	-7	GLY	-	expression tag	UNP P68400
B	-6	LEU	-	expression tag	UNP P68400
B	-5	VAL	-	expression tag	UNP P68400
B	-4	PRO	-	expression tag	UNP P68400
B	-3	ARG	-	expression tag	UNP P68400
B	-2	GLY	-	expression tag	UNP P68400
B	-1	SER	-	expression tag	UNP P68400
B	0	HIS	-	expression tag	UNP P68400

- Molecule 2 is {N}-[5-azanyl-2,4-bis(fluoranyl)phenyl]propane-1-sulfonamide (CCD ID: SY4) (formula: C₉H₁₂F₂N₂O₂S) (labeled as "Ligand of Interest" by depositor).



Mol	Chain	Residues	Atoms						ZeroOcc	AltConf
2	A	1	Total	C	F	N	O	S	0	1
			16	9	2	2	2	1		
2	B	1	Total	C	F	N	O	S	0	1
			16	9	2	2	2	1		

- Molecule 3 is 5-[(3-chlorophenyl)amino]benzo[c][2,6]naphthyridine-8-carboxylic acid (CCD ID: 3NG) (formula: C₁₉H₁₂ClN₃O₂).



Mol	Chain	Residues	Atoms					ZeroOcc	AltConf
3	A	1	Total	C	Cl	N	O	0	0
			25	19	1	3	2		
3	B	1	Total	C	Cl	N	O	0	0
			25	19	1	3	2		

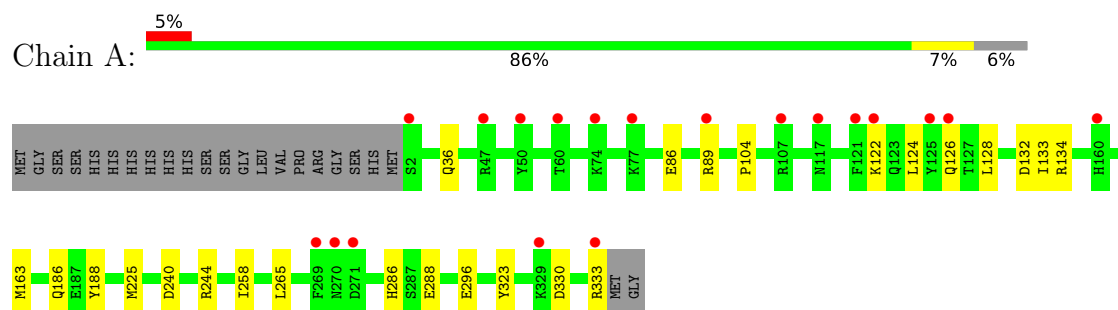
- Molecule 4 is water.

Mol	Chain	Residues	Atoms		ZeroOcc	AltConf
4	A	206	Total	O	0	1
			207	207		
4	B	200	Total	O	0	0
			200	200		

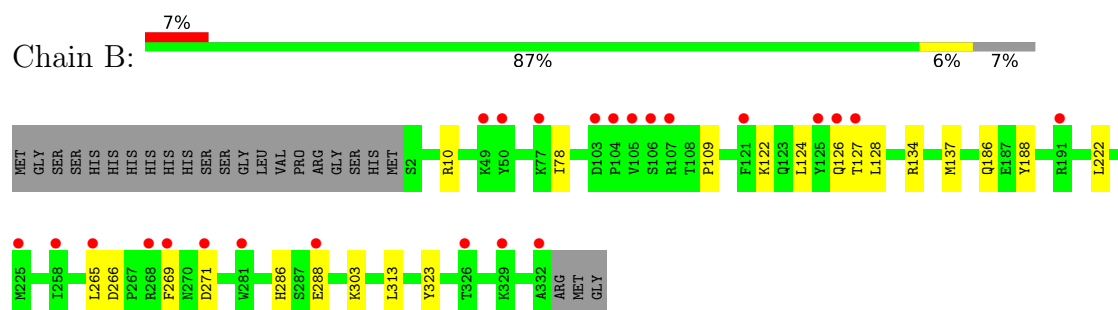
3 Residue-property plots [i](#)

These plots are drawn for all protein, RNA, DNA and oligosaccharide chains in the entry. The first graphic for a chain summarises the proportions of the various outlier classes displayed in the second graphic. The second graphic shows the sequence view annotated by issues in geometry and electron density. Residues are color-coded according to the number of geometric quality criteria for which they contain at least one outlier: green = 0, yellow = 1, orange = 2 and red = 3 or more. A red dot above a residue indicates a poor fit to the electron density ($RSRZ > 2$). Stretches of 2 or more consecutive residues without any outlier are shown as a green connector. Residues present in the sample, but not in the model, are shown in grey.

- Molecule 1: Casein kinase II subunit alpha



- Molecule 1: Casein kinase II subunit alpha



4 Data and refinement statistics

Property	Value	Source
Space group	P 43 21 2	Depositor
Cell constants a, b, c, α , β , γ	127.17Å 127.17Å 124.93Å 90.00° 90.00° 90.00°	Depositor
Resolution (Å)	72.98 – 1.96 72.98 – 1.96	Depositor EDS
% Data completeness (in resolution range)	99.5 (72.98-1.96) 91.0 (72.98-1.96)	Depositor EDS
R_{merge}	0.34	Depositor
R_{sym}	(Not available)	Depositor
$\langle I/\sigma(I) \rangle$ ¹	1.35 (at 1.95Å)	Xtriage
Refinement program	PHENIX 1.21.2_5419	Depositor
R, R_{free}	0.201 , 0.241 0.201 , 0.241	Depositor DCC
R_{free} test set	1098 reflections (1.49%)	wwPDB-VP
Wilson B-factor (Å ²)	28.2	Xtriage
Anisotropy	0.324	Xtriage
Bulk solvent k_{sol} (e/Å ³), B_{sol} (Å ²)	0.34 , 48.5	EDS
L-test for twinning ²	$\langle L \rangle = 0.48$, $\langle L^2 \rangle = 0.31$	Xtriage
Estimated twinning fraction	0.005 for -h,-l,-k 0.000 for l,-k,h	Xtriage
F_o, F_c correlation	0.96	EDS
Total number of atoms	6122	wwPDB-VP
Average B, all atoms (Å ²)	41.0	wwPDB-VP

Xtriage's analysis on translational NCS is as follows: *The analyses of the Patterson function reveals a significant off-origin peak that is 25.34 % of the origin peak, indicating pseudo-translational symmetry. The chance of finding a peak of this or larger height randomly in a structure without pseudo-translational symmetry is equal to 3.2288e-03. The detected translational NCS is most likely also responsible for the elevated intensity ratio.*

¹Intensities estimated from amplitudes.

²Theoretical values of $\langle |L| \rangle$, $\langle L^2 \rangle$ for acentric reflections are 0.5, 0.333 respectively for untwinned datasets, and 0.375, 0.2 for perfectly twinned datasets.

5 Model quality

5.1 Standard geometry

Bond lengths and bond angles in the following residue types are not validated in this section: SY4, 3NG

The Z score for a bond length (or angle) is the number of standard deviations the observed value is removed from the expected value. A bond length (or angle) with $|Z| > 5$ is considered an outlier worth inspection. RMSZ is the root-mean-square of all Z scores of the bond lengths (or angles).

Mol	Chain	Bond lengths		Bond angles	
		RMSZ	$\# Z > 5$	RMSZ	$\# Z > 5$
1	A	0.29	0/2901	0.48	0/3922
1	B	0.29	0/2882	0.47	0/3898
All	All	0.29	0/5783	0.47	0/7820

There are no bond length outliers.

There are no bond angle outliers.

There are no chirality outliers.

There are no planarity outliers.

5.2 Too-close contacts

In the following table, the Non-H and H(model) columns list the number of non-hydrogen atoms and hydrogen atoms in the chain respectively. The H(added) column lists the number of hydrogen atoms added and optimized by MolProbity. The Clashes column lists the number of clashes within the asymmetric unit, whereas Symm-Clashes lists symmetry-related clashes.

Mol	Chain	Non-H	H(model)	H(added)	Clashes	Symm-Clashes
1	A	2826	0	2763	13	0
1	B	2807	0	2742	12	0
2	A	16	0	0	1	0
2	B	16	0	0	0	0
3	A	25	0	11	0	0
3	B	25	0	11	0	0
4	A	207	0	0	0	0
4	B	200	0	0	1	0
All	All	6122	0	5527	25	0

The all-atom clashscore is defined as the number of clashes found per 1000 atoms (including hydrogen atoms). The all-atom clashscore for this structure is 2.

All (25) close contacts within the same asymmetric unit are listed below, sorted by their clash magnitude.

Atom-1	Atom-2	Interatomic distance (Å)	Clash overlap (Å)
1:A:133:ILE:HG12	1:A:225[A]:MET:HE2	1.85	0.58
1:A:86:GLU:HG2	1:A:89:ARG:HH12	1.67	0.58
1:A:186:GLN:HG2	1:A:188:TYR:CZ	2.42	0.54
1:A:128:LEU:HD22	1:A:132:ASP:HB3	1.92	0.50
1:B:78:ILE:HD13	1:B:109:PRO:HG2	1.95	0.49
1:A:122:LYS:O	1:A:126:GLN:HG2	2.13	0.48
1:B:286:HIS:CE1	1:B:288:GLU:HB2	2.47	0.48
1:A:36:GLN:HG3	1:A:104:PRO:HD3	1.96	0.47
1:B:265:LEU:HD23	1:B:265:LEU:HA	1.80	0.46
1:B:134:ARG:HG2	1:B:323:TYR:CZ	2.52	0.45
1:B:186:GLN:HG2	1:B:188:TYR:CZ	2.52	0.45
1:B:10:ARG:HG2	4:B:637:HOH:O	2.17	0.45
1:A:163:MET:HB3	1:A:163:MET:HE3	1.73	0.44
1:B:124:LEU:HA	1:B:127:THR:HG22	2.00	0.43
1:A:240:ASP:O	1:A:244:ARG:HG2	2.18	0.43
1:B:266:ASP:O	1:B:269:PHE:HB2	2.19	0.42
1:A:265:LEU:HD23	1:A:265:LEU:HA	1.82	0.42
1:B:124:LEU:O	1:B:128:LEU:HG	2.20	0.42
1:B:137:MET:HE2	1:B:222:LEU:HB2	2.02	0.42
1:A:134:ARG:HG2	1:A:323:TYR:CZ	2.55	0.41
1:B:303:LYS:HB3	1:B:313:LEU:HG	2.02	0.41
1:B:122:LYS:O	1:B:126:GLN:HG2	2.20	0.40
1:A:330:ASP:HA	1:A:333:ARG:HD3	2.03	0.40
1:A:286:HIS:CE1	1:A:288:GLU:HB2	2.57	0.40
1:A:124:LEU:HD23	2:A:401[B]:SY4:C6	2.50	0.40

There are no symmetry-related clashes.

5.3 Torsion angles ⓘ

5.3.1 Protein backbone ⓘ

In the following table, the Percentiles column shows the percent Ramachandran outliers of the chain as a percentile score with respect to all X-ray entries followed by that with respect to entries of similar resolution.

The Analysed column shows the number of residues for which the backbone conformation was analysed, and the total number of residues.

Mol	Chain	Analysed	Favoured	Allowed	Outliers	Percentiles	
1	A	333/355 (94%)	326 (98%)	7 (2%)	0	100	100
1	B	331/355 (93%)	323 (98%)	8 (2%)	0	100	100
All	All	664/710 (94%)	649 (98%)	15 (2%)	0	100	100

There are no Ramachandran outliers to report.

5.3.2 Protein sidechains ⓘ

In the following table, the Percentiles column shows the percent sidechain outliers of the chain as a percentile score with respect to all X-ray entries followed by that with respect to entries of similar resolution.

The Analysed column shows the number of residues for which the sidechain conformation was analysed, and the total number of residues.

Mol	Chain	Analysed	Rotameric	Outliers	Percentiles	
1	A	308/324 (95%)	306 (99%)	2 (1%)	78	79
1	B	306/324 (94%)	305 (100%)	1 (0%)	86	87
All	All	614/648 (95%)	611 (100%)	3 (0%)	81	82

All (3) residues with a non-rotameric sidechain are listed below:

Mol	Chain	Res	Type
1	A	258	ILE
1	A	296	GLU
1	B	271	ASP

Sometimes sidechains can be flipped to improve hydrogen bonding and reduce clashes. All (1) such sidechains are listed below:

Mol	Chain	Res	Type
1	A	207	GLN

5.3.3 RNA ⓘ

There are no RNA molecules in this entry.

5.4 Non-standard residues in protein, DNA, RNA chains ⓘ

There are no non-standard protein/DNA/RNA residues in this entry.

5.5 Carbohydrates ⓘ

There are no oligosaccharides in this entry.

5.6 Ligand geometry ⓘ

4 ligands are modelled in this entry.

In the following table, the Counts columns list the number of bonds (or angles) for which Mogul statistics could be retrieved, the number of bonds (or angles) that are observed in the model and the number of bonds (or angles) that are defined in the Chemical Component Dictionary. The Link column lists molecule types, if any, to which the group is linked. The Z score for a bond length (or angle) is the number of standard deviations the observed value is removed from the expected value. A bond length (or angle) with $|Z| > 2$ is considered an outlier worth inspection. RMSZ is the root-mean-square of all Z scores of the bond lengths (or angles).

Mol	Type	Chain	Res	Link	Bond lengths			Bond angles		
					Counts	RMSZ	# Z > 2	Counts	RMSZ	# Z > 2
2	SY4	A	401[B]	-	16,16,16	2.43	7 (43%)	21,23,23	1.91	7 (33%)
3	3NG	A	402	-	28,28,28	0.84	0	39,40,40	1.34	4 (10%)
3	3NG	B	401	-	28,28,28	0.87	1 (3%)	39,40,40	1.52	5 (12%)
2	SY4	B	402[B]	-	16,16,16	2.28	7 (43%)	21,23,23	1.82	6 (28%)

In the following table, the Chirals column lists the number of chiral outliers, the number of chiral centers analysed, the number of these observed in the model and the number defined in the Chemical Component Dictionary. Similar counts are reported in the Torsion and Rings columns. '-' means no outliers of that kind were identified.

Mol	Type	Chain	Res	Link	Chirals	Torsions	Rings
2	SY4	A	401[B]	-	-	5/9/9/9	0/1/1/1
3	3NG	A	402	-	-	0/8/8/8	0/4/4/4
3	3NG	B	401	-	-	0/8/8/8	0/4/4/4
2	SY4	B	402[B]	-	-	4/9/9/9	0/1/1/1

All (15) bond length outliers are listed below:

Mol	Chain	Res	Type	Atoms	Z	Observed(Å)	Ideal(Å)
2	A	401[B]	SY4	S-N	5.19	1.73	1.62
2	B	402[B]	SY4	S-N	4.65	1.71	1.62
2	A	401[B]	SY4	C3-C8	3.60	1.43	1.39
2	A	401[B]	SY4	C4-C3	3.40	1.44	1.39
2	B	402[B]	SY4	C3-C8	3.33	1.43	1.39
2	B	402[B]	SY4	C2-S	3.10	1.88	1.78

Continued on next page...

Continued from previous page...

Mol	Chain	Res	Type	Atoms	Z	Observed(Å)	Ideal(Å)
2	A	401[B]	SY4	C2-S	3.05	1.87	1.78
2	B	402[B]	SY4	C4-C3	3.02	1.44	1.39
2	A	401[B]	SY4	C7-C8	2.92	1.42	1.37
2	B	402[B]	SY4	C4-C5	2.79	1.44	1.40
2	A	401[B]	SY4	C7-C6	2.67	1.42	1.37
2	A	401[B]	SY4	C4-C5	2.61	1.44	1.40
2	B	402[B]	SY4	C7-C8	2.50	1.41	1.37
2	B	402[B]	SY4	C7-C6	2.28	1.41	1.37
3	B	401	3NG	C5-C23	2.03	1.53	1.49

All (22) bond angle outliers are listed below:

Mol	Chain	Res	Type	Atoms	Z	Observed(°)	Ideal(°)
3	B	401	3NG	N15-C10-N9	5.30	123.25	118.55
2	B	402[B]	SY4	O1-S-O	-4.68	112.80	119.34
2	A	401[B]	SY4	O1-S-O	-4.64	112.85	119.34
3	B	401	3NG	C7-C10-N15	-4.45	115.26	119.77
3	A	402	3NG	N15-C10-N9	4.26	122.33	118.55
3	A	402	3NG	C7-C10-N15	-4.09	115.63	119.77
2	A	401[B]	SY4	C7-C8-C3	-3.36	119.99	123.43
2	B	402[B]	SY4	C8-C3-N	-3.04	117.50	120.66
2	A	401[B]	SY4	C5-C4-C3	2.99	124.56	119.09
3	B	401	3NG	C16-C17-C18	2.85	121.06	118.72
2	B	402[B]	SY4	C5-C4-C3	2.71	124.05	119.09
2	A	401[B]	SY4	C4-C5-N1	2.52	125.94	119.46
2	B	402[B]	SY4	C7-C8-C3	-2.42	120.95	123.43
3	A	402	3NG	C16-C17-C18	2.40	120.68	118.72
3	B	401	3NG	C16-N15-C10	2.38	134.31	128.22
2	B	402[B]	SY4	C4-C5-N1	2.34	125.50	119.46
2	A	401[B]	SY4	C8-C7-C6	2.30	121.09	117.22
3	B	401	3NG	C10-N9-C1	2.23	121.29	116.81
2	A	401[B]	SY4	F-C8-C3	2.22	120.36	117.59
3	A	402	3NG	C10-N9-C1	2.22	121.27	116.81
2	A	401[B]	SY4	C8-C3-N	-2.19	118.38	120.66
2	B	402[B]	SY4	C4-C3-N	2.06	125.32	120.84

There are no chirality outliers.

All (9) torsion outliers are listed below:

Mol	Chain	Res	Type	Atoms
2	A	401[B]	SY4	C1-C2-S-N
2	A	401[B]	SY4	C1-C2-S-O

Continued on next page...

Continued from previous page...

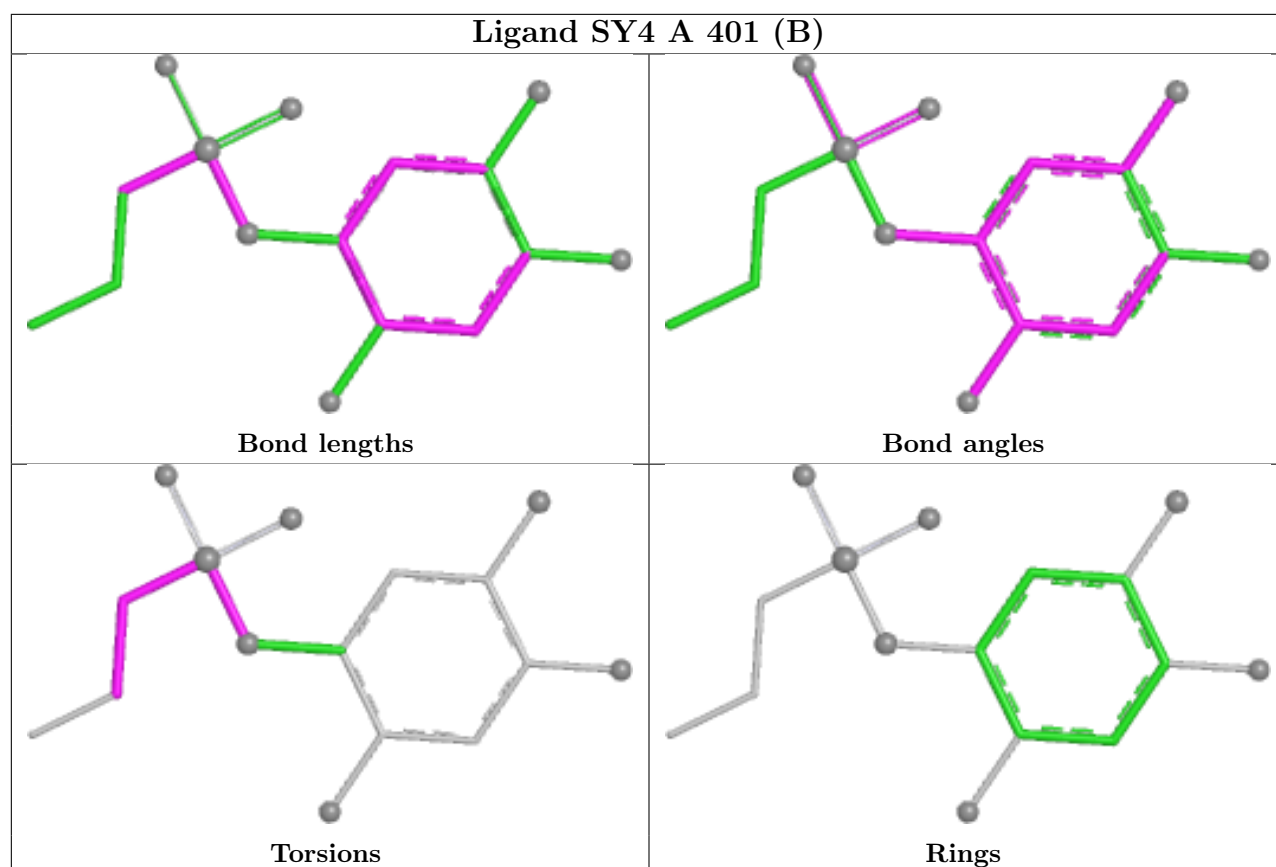
Mol	Chain	Res	Type	Atoms
2	A	401[B]	SY4	C1-C2-S-O1
2	B	402[B]	SY4	C1-C2-S-N
2	B	402[B]	SY4	C1-C2-S-O
2	B	402[B]	SY4	C1-C2-S-O1
2	A	401[B]	SY4	C-C1-C2-S
2	B	402[B]	SY4	C-C1-C2-S
2	A	401[B]	SY4	C3-N-S-O

There are no ring outliers.

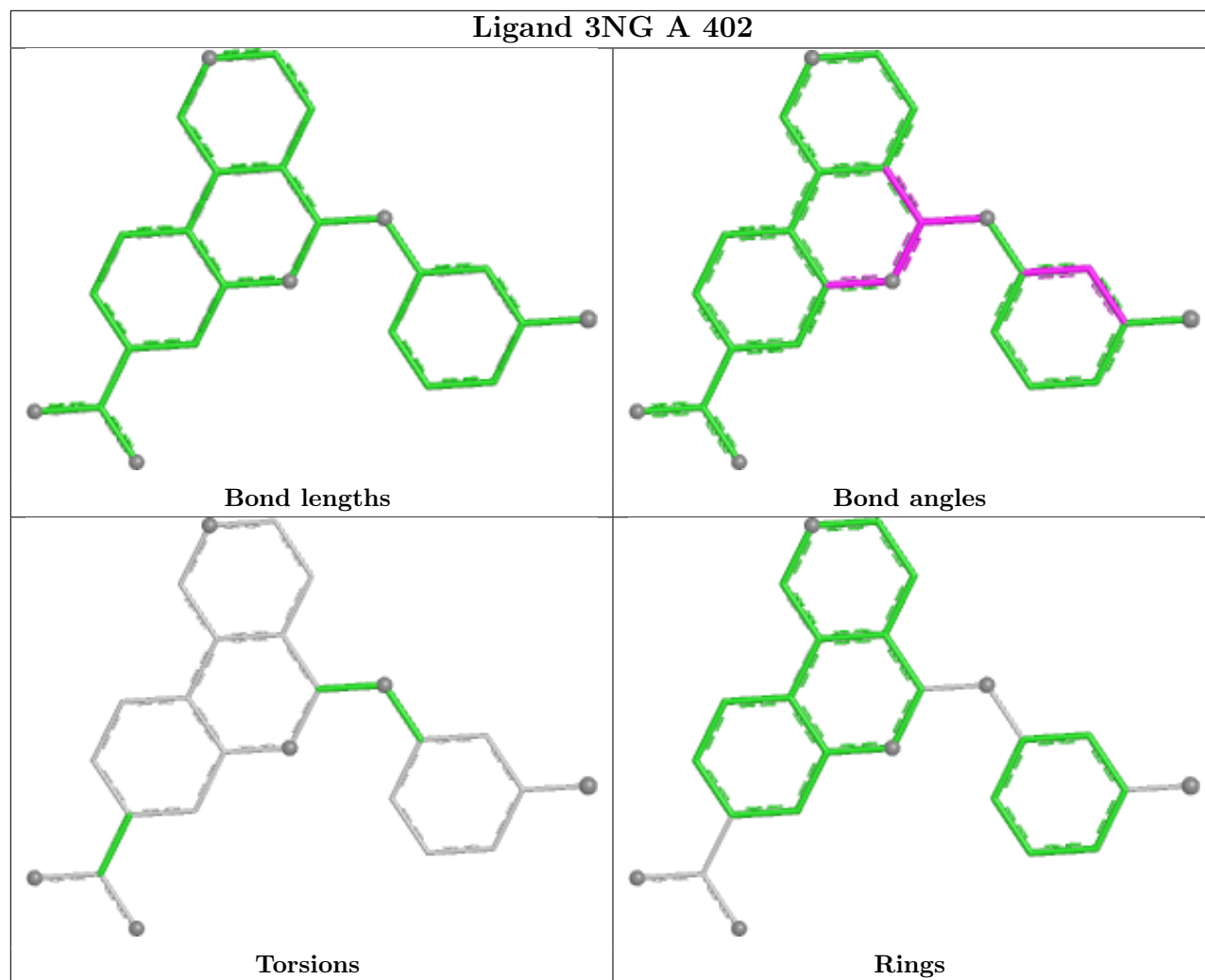
1 monomer is involved in 1 short contact:

Mol	Chain	Res	Type	Clashes	Symm-Clashes
2	A	401[B]	SY4	1	0

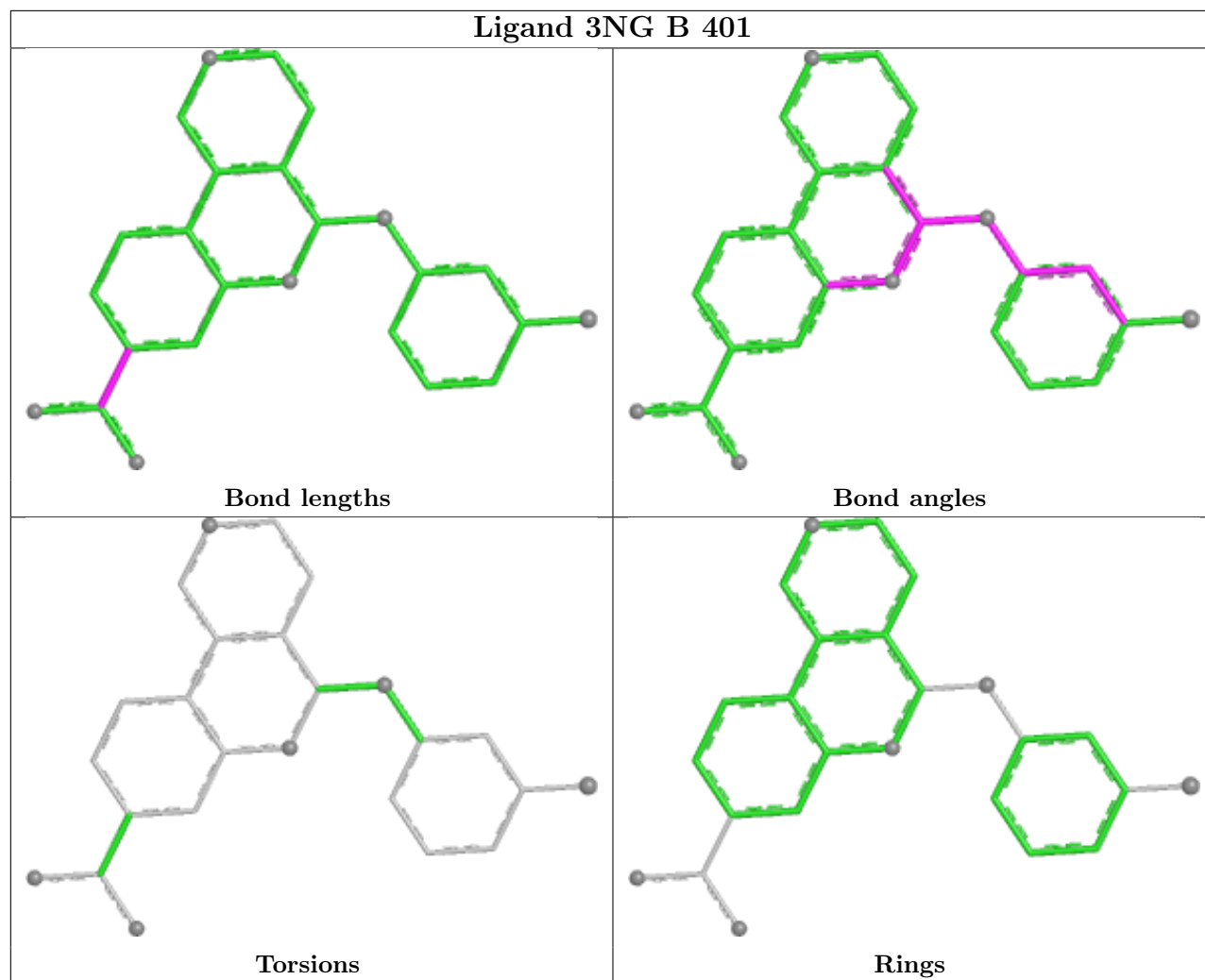
The following is a two-dimensional graphical depiction of Mogul quality analysis of bond lengths, bond angles, torsion angles, and ring geometry for all instances of the Ligand of Interest. In addition, ligands with molecular weight > 250 and outliers as shown on the validation Tables will also be included. For torsion angles, if less than 5% of the Mogul distribution of torsion angles is within 10 degrees of the torsion angle in question, then that torsion angle is considered an outlier. Any bond that is central to one or more torsion angles identified as an outlier by Mogul will be highlighted in the graph. For rings, the root-mean-square deviation (RMSD) between the ring in question and similar rings identified by Mogul is calculated over all ring torsion angles. If the average RMSD is greater than 60 degrees and the minimal RMSD between the ring in question and any Mogul-identified rings is also greater than 60 degrees, then that ring is considered an outlier. The outliers are highlighted in purple. The color gray indicates Mogul did not find sufficient equivalents in the CSD to analyse the geometry.

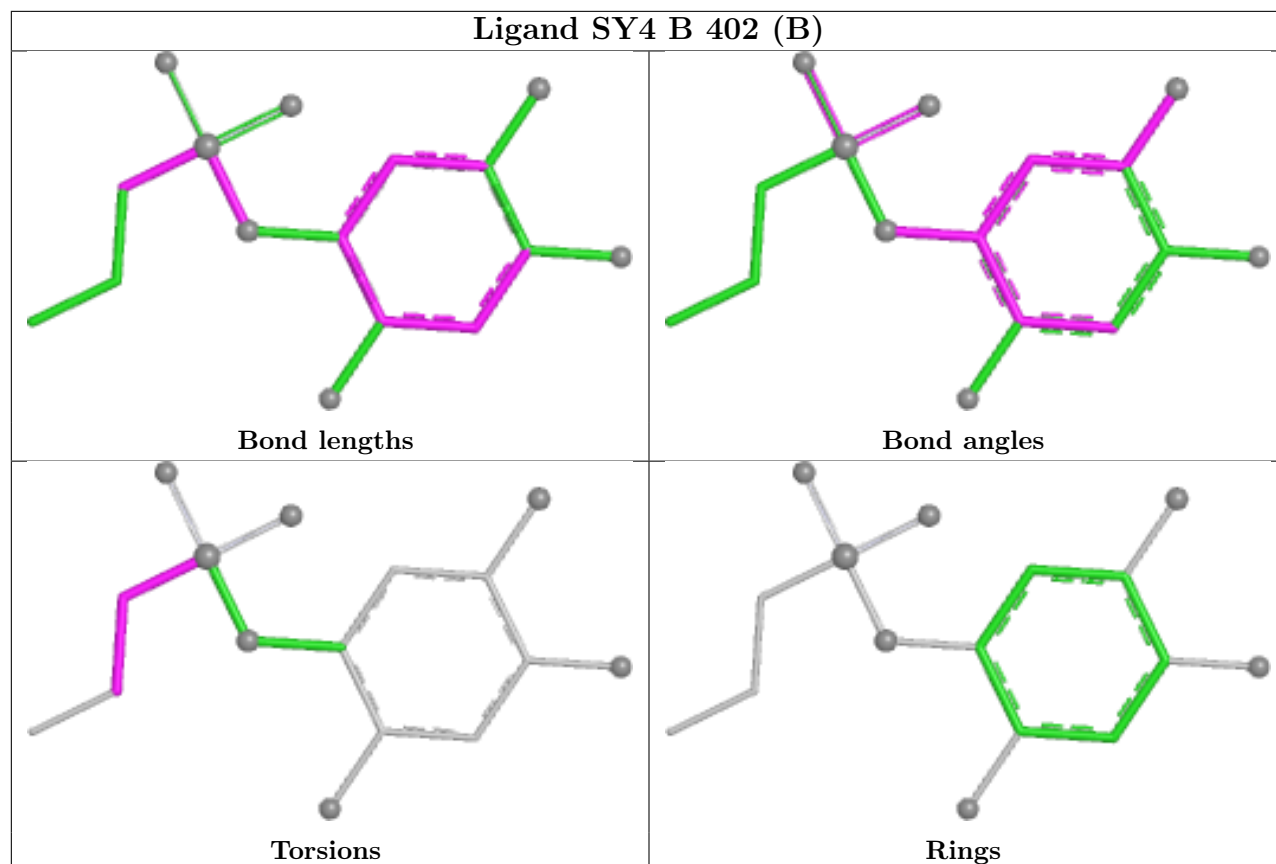


Ligand 3NG A 402



Ligand 3NG B 401





5.7 Other polymers [i](#)

There are no such residues in this entry.

5.8 Polymer linkage issues [i](#)

There are no chain breaks in this entry.

6 Fit of model and data

6.1 Protein, DNA and RNA chains

In the following table, the column labelled ‘#RSRZ > 2’ contains the number (and percentage) of RSRZ outliers, followed by percent RSRZ outliers for the chain as percentile scores relative to all X-ray entries and entries of similar resolution. The OWAB column contains the minimum, median, 95th percentile and maximum values of the occupancy-weighted average B-factor per residue. The column labelled ‘Q < 0.9’ lists the number of (and percentage) of residues with an average occupancy less than 0.9.

Mol	Chain	Analysed	<RSRZ>	#RSRZ>2	OWAB(Å ²)	Q<0.9
1	A	332/355 (93%)	0.32	19 (5%) 29 34	17, 37, 68, 113	3 (0%)
1	B	331/355 (93%)	0.41	24 (7%) 21 24	16, 38, 72, 100	2 (0%)
All	All	663/710 (93%)	0.37	43 (6%) 25 28	16, 38, 70, 113	5 (0%)

All (43) RSRZ outliers are listed below:

Mol	Chain	Res	Type	RSRZ
1	B	125	TYR	4.7
1	B	49	LYS	4.4
1	B	105	VAL	4.2
1	B	107	ARG	4.0
1	B	77	LYS	3.7
1	B	50	TYR	3.6
1	A	77	LYS	3.5
1	B	332	ALA	3.2
1	A	271	ASP	3.1
1	B	103	ASP	3.1
1	A	2	SER	3.1
1	B	121	PHE	3.0
1	A	121	PHE	3.0
1	A	107	ARG	2.9
1	B	106	SER	2.9
1	A	269	PHE	2.7
1	A	125	TYR	2.6
1	B	104	PRO	2.5
1	B	258	ILE	2.5
1	B	127	THR	2.5
1	B	126	GLN	2.5
1	B	268	ARG	2.5
1	B	326	THR	2.5
1	A	333	ARG	2.4

Continued on next page...

Continued from previous page...

Mol	Chain	Res	Type	RSRZ
1	A	117	ASN	2.4
1	A	50	TYR	2.3
1	A	160	HIS	2.3
1	B	329	LYS	2.3
1	A	270	ASN	2.3
1	A	329	LYS	2.3
1	B	265	LEU	2.3
1	A	74	LYS	2.2
1	B	288	GLU	2.2
1	A	126	GLN	2.1
1	B	281	TRP	2.1
1	B	271	ASP	2.1
1	A	89	ARG	2.1
1	A	60	THR	2.1
1	A	122	LYS	2.1
1	B	225	MET	2.1
1	A	47	ARG	2.1
1	B	191	ARG	2.0
1	B	269	PHE	2.0

6.2 Non-standard residues in protein, DNA, RNA chains [i](#)

There are no non-standard protein/DNA/RNA residues in this entry.

6.3 Carbohydrates [i](#)

There are no oligosaccharides in this entry.

6.4 Ligands [i](#)

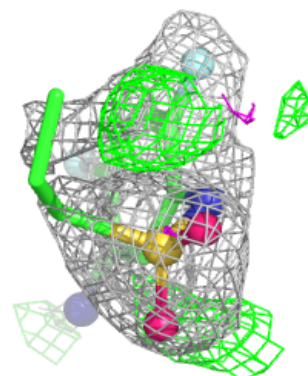
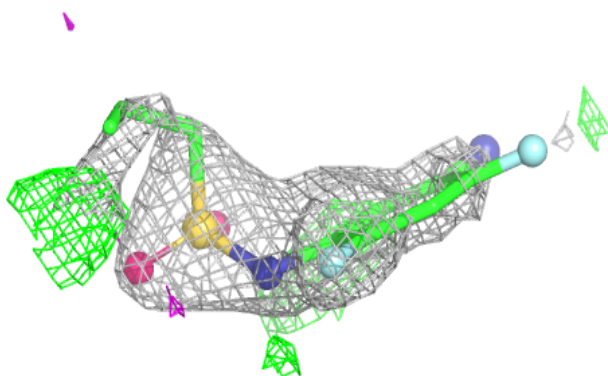
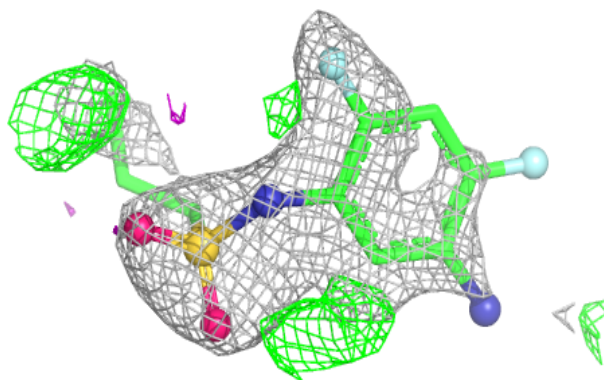
In the following table, the Atoms column lists the number of modelled atoms in the group and the number defined in the chemical component dictionary. The B-factors column lists the minimum, median, 95th percentile and maximum values of B factors of atoms in the group. The column labelled 'Q< 0.9' lists the number of atoms with occupancy less than 0.9.

Mol	Type	Chain	Res	Atoms	RSCC	RSR	B-factors(Å ²)	Q<0.9
2	SY4	B	402[B]	16/16	0.85	0.21	37,53,65,72	16
3	3NG	A	402	25/25	0.85	0.16	21,37,50,53	25
3	3NG	B	401	25/25	0.85	0.16	18,40,48,55	25
2	SY4	A	401[B]	16/16	0.87	0.19	31,47,52,54	16

The following is a graphical depiction of the model fit to experimental electron density of all instances of the Ligand of Interest. In addition, ligands with molecular weight > 250 and outliers as shown on the geometry validation Tables will also be included. Each fit is shown from different orientation to approximate a three-dimensional view.

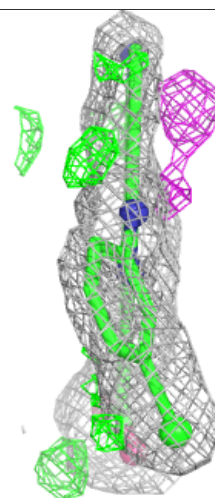
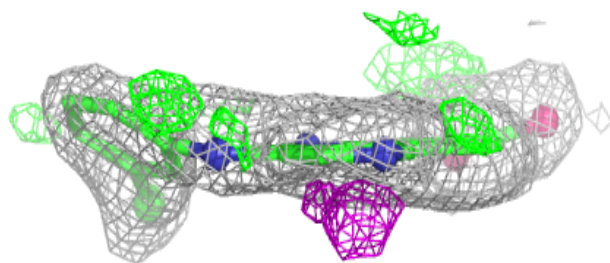
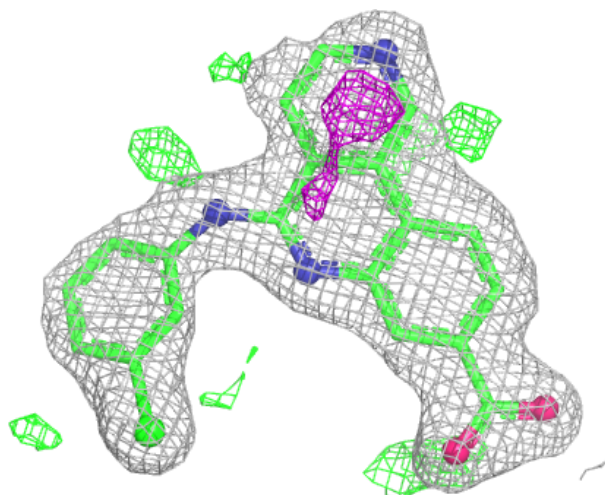
Electron density around SY4 B 402 (B):

$2mF_o-DF_c$ (at 0.7 rmsd) in gray
 mF_o-DF_c (at 3 rmsd) in purple (negative)
and green (positive)



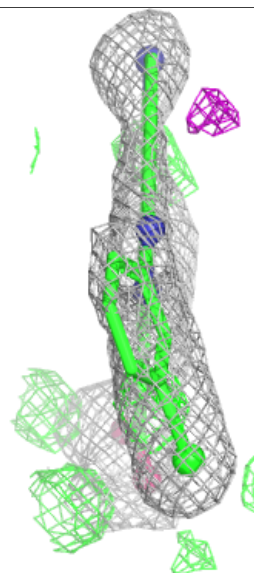
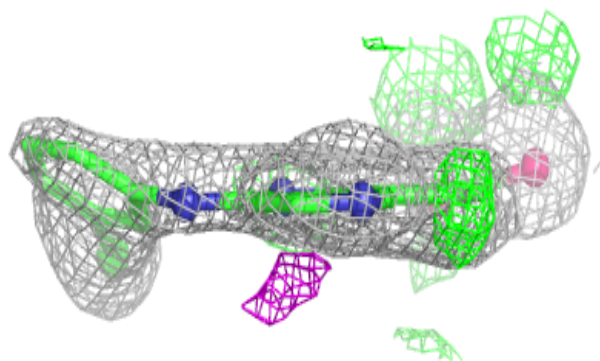
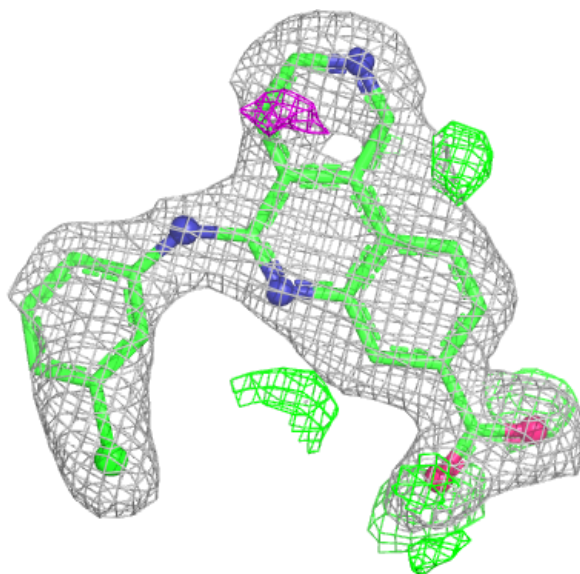
Electron density around 3NG A 402:

$2mF_o-DF_c$ (at 0.7 rmsd) in gray
 mF_o-DF_c (at 3 rmsd) in purple (negative)
and green (positive)



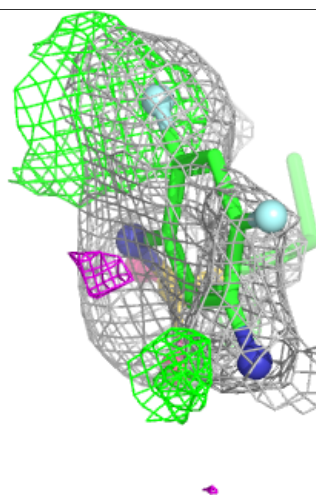
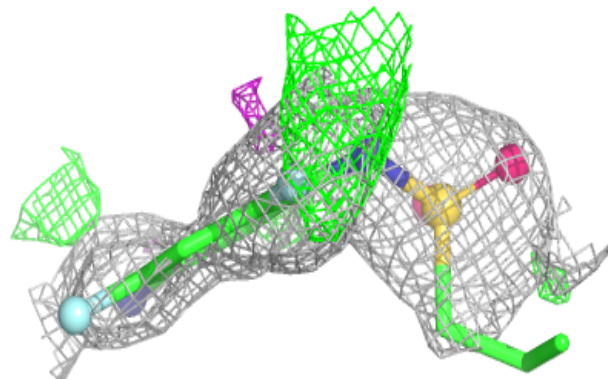
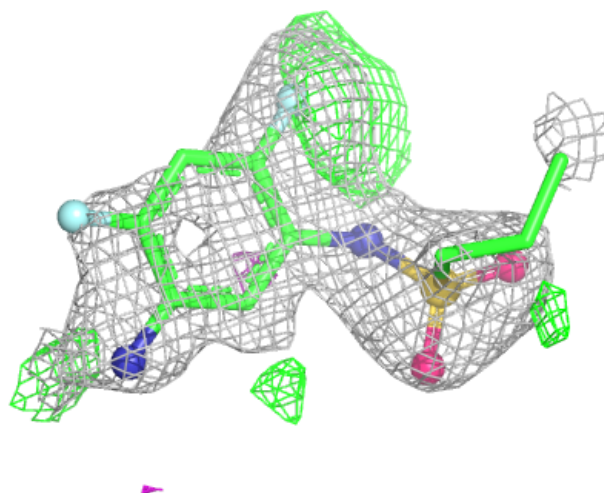
Electron density around 3NG B 401:

$2mF_o-DF_c$ (at 0.7 rmsd) in gray
 mF_o-DF_c (at 3 rmsd) in purple (negative)
and green (positive)



Electron density around SY4 A 401 (B):

$2mF_o-DF_c$ (at 0.7 rmsd) in gray
 mF_o-DF_c (at 3 rmsd) in purple (negative)
and green (positive)



6.5 Other polymers [i](#)

There are no such residues in this entry.