



wwPDB X-ray Structure Validation Summary Report ⓘ

Mar 5, 2026 – 09:56 AM UTC

PDB ID : 9HW6 / pdb_00009hw6
Title : Toxoplasma gondii GSK3b bound to LY2090314 and disulphide bonded through the C223 residue
Authors : Swale, C.; Diaz-Martin, S.; Bowler, M.W.
Deposited on : 2025-01-03
Resolution : 2.90 Å(reported)

This is a wwPDB X-ray Structure Validation Summary Report for a publicly released PDB entry.

We welcome your comments at validation@mail.wwpdb.org

A user guide is available at

<https://www.wwpdb.org/validation/2017/XrayValidationReportHelp>

with specific help available everywhere you see the ⓘ symbol.

The types of validation reports are described at

<http://www.wwpdb.org/validation/2017/FAQs#types>.

The following versions of software and data (see [references ⓘ](#)) were used in the production of this report:

MolProbity	:	4-5-2 with Phenix2.0
Mogul	:	2022.3.0, CSD as543be (2022)
Xtriage (Phenix)	:	2.0
EDS	:	3.0
Buster-report	:	wwPDB partial adaption of 1.1.7 (2018)
Percentile statistics	:	20250101.v01 (using entries in the PDB archive January 1st 2025)
CCP4	:	9.0.010 (Gargrove)
Density-Fitness	:	1.0.12
Ideal geometry (proteins)	:	Engh & Huber (2001)
Ideal geometry (DNA, RNA)	:	Parkinson et al. (1996)
Validation Pipeline (wwPDB-VP)	:	2.49

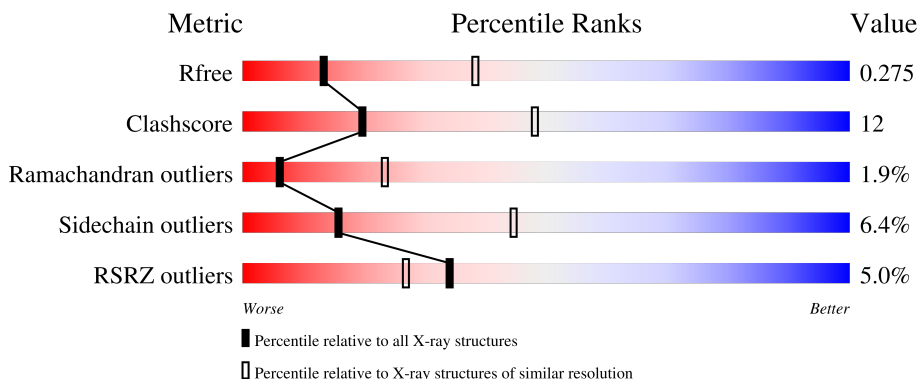
1 Overall quality at a glance ⓘ

The following experimental techniques were used to determine the structure:

X-RAY DIFFRACTION

The reported resolution of this entry is 2.90 Å.

Percentile scores (ranging between 0-100) for global validation metrics of the entry are shown in the following graphic. The table shows the number of entries on which the scores are based.



Metric	Whole archive (#Entries)	Similar resolution (#Entries, resolution range(Å))
R_{free}	180053	2481 (2.90-2.90)
Clashscore	190562	2690 (2.90-2.90)
Ramachandran outliers	187476	2623 (2.90-2.90)
Sidechain outliers	187428	2625 (2.90-2.90)
RSRZ outliers	180081	2481 (2.90-2.90)

The table below summarises the geometric issues observed across the polymeric chains and their fit to the electron density. The red, orange, yellow and green segments of the lower bar indicate the fraction of residues that contain outliers for ≥ 3 , 2, 1 and 0 types of geometric quality criteria respectively. A grey segment represents the fraction of residues that are not modelled. The numeric value for each fraction is indicated below the corresponding segment, with a dot representing fractions $\leq 5\%$. The upper red bar (where present) indicates the fraction of residues that have poor fit to the electron density. The numeric value is given above the bar.

Mol	Chain	Length	Quality of chain
1	A	373	<div> <div>4%</div> <div>62%</div> <div>23%</div> <div>•</div> <div>11%</div> </div>
1	D	373	<div> <div>3%</div> <div>61%</div> <div>24%</div> <div>•</div> <div>12%</div> </div>
2	B	373	<div> <div>4%</div> <div>60%</div> <div>25%</div> <div>• •</div> <div>11%</div> </div>
2	F	373	<div> <div>6%</div> <div>63%</div> <div>21%</div> <div>•</div> <div>13%</div> </div>

2 Entry composition

There are 4 unique types of molecules in this entry. The entry contains 10736 atoms, of which 0 are hydrogens and 0 are deuteriums.

In the tables below, the ZeroOcc column contains the number of atoms modelled with zero occupancy, the AltConf column contains the number of residues with at least one atom in alternate conformation and the Trace column contains the number of residues modelled with at most 2 atoms.

- Molecule 1 is a protein called Putative cell-cycle-associated protein kinase GSK.

Mol	Chain	Residues	Atoms						ZeroOcc	AltConf	Trace
1	A	332	Total	C	N	O	P	S	0	0	0
			2677	1711	458	491	2	15			
1	D	327	Total	C	N	O	P	S	0	0	0
			2627	1678	452	480	1	16			

There are 16 discrepancies between the modelled and reference sequences:

Chain	Residue	Modelled	Actual	Comment	Reference
A	1	MET	-	initiating methionine	UNP A0A125YY75
A	367	GLY	-	expression tag	UNP A0A125YY75
A	368	HIS	-	expression tag	UNP A0A125YY75
A	369	HIS	-	expression tag	UNP A0A125YY75
A	370	HIS	-	expression tag	UNP A0A125YY75
A	371	HIS	-	expression tag	UNP A0A125YY75
A	372	HIS	-	expression tag	UNP A0A125YY75
A	373	HIS	-	expression tag	UNP A0A125YY75
D	1	MET	-	initiating methionine	UNP A0A125YY75
D	367	GLY	-	expression tag	UNP A0A125YY75
D	368	HIS	-	expression tag	UNP A0A125YY75
D	369	HIS	-	expression tag	UNP A0A125YY75
D	370	HIS	-	expression tag	UNP A0A125YY75
D	371	HIS	-	expression tag	UNP A0A125YY75
D	372	HIS	-	expression tag	UNP A0A125YY75
D	373	HIS	-	expression tag	UNP A0A125YY75

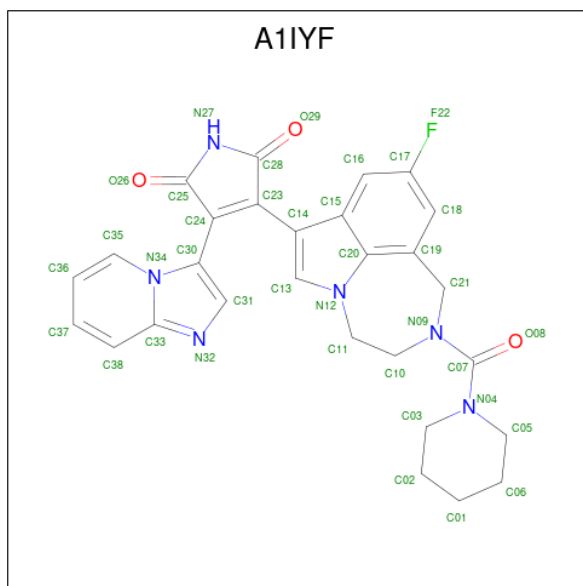
- Molecule 2 is a protein called Putative cell-cycle-associated protein kinase GSK.

Mol	Chain	Residues	Atoms						ZeroOcc	AltConf	Trace
2	B	332	Total	C	N	O	S		0	0	0
			2659	1701	460	482	16				
2	F	325	Total	C	N	O	P	S	0	0	0
			2611	1675	446	473	1	16			

There are 16 discrepancies between the modelled and reference sequences:

Chain	Residue	Modelled	Actual	Comment	Reference
B	1	MET	-	initiating methionine	UNP A0A125YY75
B	367	GLY	-	expression tag	UNP A0A125YY75
B	368	HIS	-	expression tag	UNP A0A125YY75
B	369	HIS	-	expression tag	UNP A0A125YY75
B	370	HIS	-	expression tag	UNP A0A125YY75
B	371	HIS	-	expression tag	UNP A0A125YY75
B	372	HIS	-	expression tag	UNP A0A125YY75
B	373	HIS	-	expression tag	UNP A0A125YY75
F	1	MET	-	initiating methionine	UNP A0A125YY75
F	367	GLY	-	expression tag	UNP A0A125YY75
F	368	HIS	-	expression tag	UNP A0A125YY75
F	369	HIS	-	expression tag	UNP A0A125YY75
F	370	HIS	-	expression tag	UNP A0A125YY75
F	371	HIS	-	expression tag	UNP A0A125YY75
F	372	HIS	-	expression tag	UNP A0A125YY75
F	373	HIS	-	expression tag	UNP A0A125YY75

- Molecule 3 is LY-2090314 (CCD ID: A1IYF) (formula: $C_{28}H_{25}FN_6O_3$) (labeled as "Ligand of Interest" by depositor).



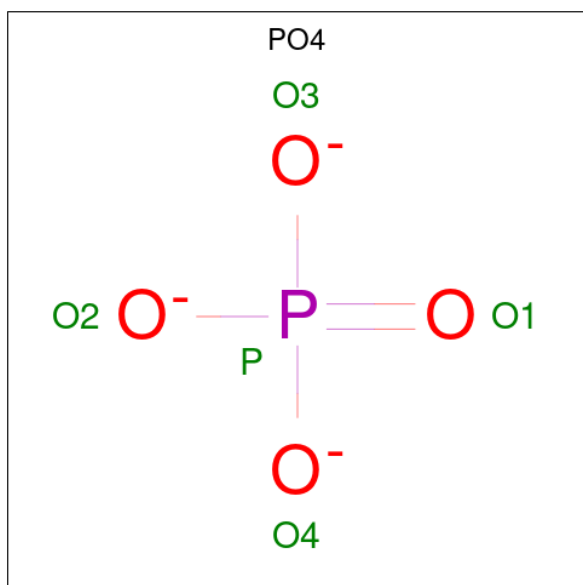
Mol	Chain	Residues	Atoms					ZeroOcc	AltConf
3	A	1	Total	C	F	N	O	0	0
			38	28	1	6	3		
3	B	1	Total	C	F	N	O	0	0
			38	28	1	6	3		

Continued on next page...

Continued from previous page...

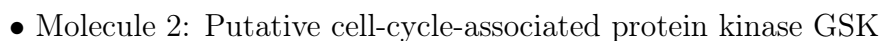
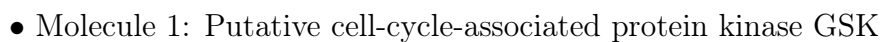
Mol	Chain	Residues	Atoms					ZeroOcc	AltConf
3	D	1	Total	C	F	N	O	0	0
			38	28	1	6	3		
3	F	1	Total	C	F	N	O	0	0
			38	28	1	6	3		

- Molecule 4 is PHOSPHATE ION (CCD ID: PO4) (formula: O₄P).



Mol	Chain	Residues	Atoms			ZeroOcc	AltConf
4	B	1	Total	O	P	0	0
			5	4	1		
4	D	1	Total	O	P	0	0
			5	4	1		

- Molecule 1: Putative cell-cycle-associated protein kinase GSK



4 Data and refinement statistics

Property	Value	Source
Space group	P 1 21 1	Depositor
Cell constants a, b, c, α , β , γ	70.91Å 161.73Å 83.28Å 90.00° 92.21° 90.00°	Depositor
Resolution (Å)	45.48 – 2.90 45.48 – 2.90	Depositor EDS
% Data completeness (in resolution range)	98.5 (45.48-2.90) 92.4 (45.48-2.90)	Depositor EDS
R_{merge}	(Not available)	Depositor
R_{sym}	(Not available)	Depositor
$\langle I/\sigma(I) \rangle$ ¹	1.32 (at 2.91Å)	Xtriage
Refinement program	PHENIX 1.21.2_5419	Depositor
R, R_{free}	0.204 , 0.260 (Not available) , 0.275	Depositor DCC
R_{free} test set	1998 reflections (4.88%)	wwPDB-VP
Wilson B-factor (Å ²)	54.4	Xtriage
Anisotropy	0.575	Xtriage
Bulk solvent k_{sol} (e/Å ³), B_{sol} (Å ²)	0.32 , 33.0	EDS
L-test for twinning ²	$\langle L \rangle = 0.47$, $\langle L^2 \rangle = 0.30$	Xtriage
Estimated twinning fraction	0.050 for h,-k,-l	Xtriage
F_o, F_c correlation	0.92	EDS
Total number of atoms	10736	wwPDB-VP
Average B, all atoms (Å ²)	60.0	wwPDB-VP

Xtriage's analysis on translational NCS is as follows: *The largest off-origin peak in the Patterson function is 10.94% of the height of the origin peak. No significant pseudotranslation is detected.*

¹Intensities estimated from amplitudes.

²Theoretical values of $\langle |L| \rangle$, $\langle L^2 \rangle$ for acentric reflections are 0.5, 0.333 respectively for untwinned datasets, and 0.375, 0.2 for perfectly twinned datasets.

5 Model quality

5.1 Standard geometry

Bond lengths and bond angles in the following residue types are not validated in this section: SEP, PTR, PO4, A1IYF

The Z score for a bond length (or angle) is the number of standard deviations the observed value is removed from the expected value. A bond length (or angle) with $|Z| > 5$ is considered an outlier worth inspection. RMSZ is the root-mean-square of all Z scores of the bond lengths (or angles).

Mol	Chain	Bond lengths		Bond angles	
		RMSZ	# Z >5	RMSZ	# Z >5
1	A	0.46	0/2710	0.68	0/3671
1	D	0.50	0/2673	0.75	0/3617
2	B	0.44	0/2718	0.67	0/3681
2	F	0.37	0/2651	0.63	0/3588
All	All	0.45	0/10752	0.68	0/14557

Chiral center outliers are detected by calculating the chiral volume of a chiral center and verifying if the center is modelled as a planar moiety or with the opposite hand. A planarity outlier is detected by checking planarity of atoms in a peptide group, atoms in a mainchain group or atoms of a sidechain that are expected to be planar.

Mol	Chain	#Chirality outliers	#Planarity outliers
1	A	0	2
1	D	0	2
All	All	0	4

There are no bond length outliers.

There are no bond angle outliers.

There are no chirality outliers.

All (4) planarity outliers are listed below:

Mol	Chain	Res	Type	Group
1	A	102	ARG	Sidechain
1	A	64	ARG	Sidechain
1	D	199	ARG	Sidechain
1	D	32	ARG	Sidechain

5.2 Too-close contacts ⓘ

In the following table, the Non-H and H(model) columns list the number of non-hydrogen atoms and hydrogen atoms in the chain respectively. The H(added) column lists the number of hydrogen atoms added and optimized by MolProbity. The Clashes column lists the number of clashes within the asymmetric unit, whereas Symm-Clashes lists symmetry-related clashes.

Mol	Chain	Non-H	H(model)	H(added)	Clashes	Symm-Clashes
1	A	2677	0	2681	65	1
1	D	2627	0	2640	77	1
2	B	2659	0	2680	69	0
2	F	2611	0	2639	53	0
3	A	38	0	0	0	0
3	B	38	0	0	2	0
3	D	38	0	0	1	0
3	F	38	0	0	0	0
4	B	5	0	0	0	0
4	D	5	0	0	0	0
All	All	10736	0	10640	246	1

The all-atom clashscore is defined as the number of clashes found per 1000 atoms (including hydrogen atoms). The all-atom clashscore for this structure is 12.

The worst 5 of 246 close contacts within the same asymmetric unit are listed below, sorted by their clash magnitude.

Atom-1	Atom-2	Interatomic distance (Å)	Clash overlap (Å)
1:D:196:ARG:CA	1:D:199:ARG:HE	1.62	1.12
1:D:196:ARG:N	1:D:199:ARG:HE	1.46	1.12
1:D:196:ARG:HA	1:D:199:ARG:NE	1.65	1.09
1:D:196:ARG:HA	1:D:199:ARG:CZ	1.90	1.01
2:B:196:ARG:HB2	2:B:241:GLN:HE22	1.23	1.00

All (1) symmetry-related close contacts are listed below. The label for Atom-2 includes the symmetry operator and encoded unit-cell translations to be applied.

Atom-1	Atom-2	Interatomic distance (Å)	Clash overlap (Å)
1:A:64:ARG:NH1	1:D:62:ASP:OD1[1_655]	1.74	0.46

5.3 Torsion angles

5.3.1 Protein backbone

In the following table, the Percentiles column shows the percent Ramachandran outliers of the chain as a percentile score with respect to all X-ray entries followed by that with respect to entries of similar resolution.

The Analysed column shows the number of residues for which the backbone conformation was analysed, and the total number of residues.

Mol	Chain	Analysed	Favoured	Allowed	Outliers	Percentiles	
1	A	325/373 (87%)	303 (93%)	17 (5%)	5 (2%)	8	28
1	D	320/373 (86%)	296 (92%)	18 (6%)	6 (2%)	6	23
2	B	326/373 (87%)	292 (90%)	26 (8%)	8 (2%)	4	17
2	F	317/373 (85%)	293 (92%)	19 (6%)	5 (2%)	7	27
All	All	1288/1492 (86%)	1184 (92%)	80 (6%)	24 (2%)	6	23

5 of 24 Ramachandran outliers are listed below:

Mol	Chain	Res	Type
2	B	101	ASN
2	B	195	SER
1	D	95	ARG
1	D	98	ASN
1	D	100	HIS

5.3.2 Protein sidechains

In the following table, the Percentiles column shows the percent sidechain outliers of the chain as a percentile score with respect to all X-ray entries followed by that with respect to entries of similar resolution.

The Analysed column shows the number of residues for which the sidechain conformation was analysed, and the total number of residues.

Mol	Chain	Analysed	Rotameric	Outliers	Percentiles	
1	A	295/330 (89%)	276 (94%)	19 (6%)	16	44
1	D	291/330 (88%)	276 (95%)	15 (5%)	21	52
2	B	296/331 (89%)	270 (91%)	26 (9%)	9	29
2	F	289/331 (87%)	274 (95%)	15 (5%)	21	52
All	All	1171/1322 (89%)	1096 (94%)	75 (6%)	16	44

5 of 75 residues with a non-rotameric sidechain are listed below:

Mol	Chain	Res	Type
1	D	287	SER
2	F	271	ASP
1	D	292	ASP
2	F	158	ILE
2	B	82	VAL

Sometimes sidechains can be flipped to improve hydrogen bonding and reduce clashes. 5 of 12 such sidechains are listed below:

Mol	Chain	Res	Type
1	D	101	ASN
2	F	105	ASN
2	F	354	ASN
2	F	162	ASN
2	B	241	GLN

5.3.3 RNA ⓘ

There are no RNA molecules in this entry.

5.4 Non-standard residues in protein, DNA, RNA chains ⓘ

4 non-standard protein/DNA/RNA residues are modelled in this entry.

In the following table, the Counts columns list the number of bonds (or angles) for which Mogul statistics could be retrieved, the number of bonds (or angles) that are observed in the model and the number of bonds (or angles) that are defined in the Chemical Component Dictionary. The Link column lists molecule types, if any, to which the group is linked. The Z score for a bond length (or angle) is the number of standard deviations the observed value is removed from the expected value. A bond length (or angle) with $|Z| > 2$ is considered an outlier worth inspection. RMSZ is the root-mean-square of all Z scores of the bond lengths (or angles).

Mol	Type	Chain	Res	Link	Bond lengths			Bond angles		
					Counts	RMSZ	$\# Z > 2$	Counts	RMSZ	$\# Z > 2$
2	PTR	F	192	2	15,16,17	1.23	1 (6%)	17,22,24	0.58	0
1	SEP	D	238	1	8,9,10	1.77	2 (25%)	7,12,14	1.72	1 (14%)
1	PTR	A	192	1	15,16,17	1.14	1 (6%)	17,22,24	0.83	1 (5%)
1	SEP	A	238	1	8,9,10	2.10	3 (37%)	7,12,14	3.15	3 (42%)

In the following table, the Chirals column lists the number of chiral outliers, the number of chiral centers analysed, the number of these observed in the model and the number defined in the

Chemical Component Dictionary. Similar counts are reported in the Torsion and Rings columns.
'-' means no outliers of that kind were identified.

Mol	Type	Chain	Res	Link	Chirals	Torsions	Rings
2	PTR	F	192	2	-	2/10/11/13	0/1/1/1
1	SEP	D	238	1	-	5/6/8/10	-
1	PTR	A	192	1	-	3/10/11/13	0/1/1/1
1	SEP	A	238	1	-	1/6/8/10	-

The worst 5 of 7 bond length outliers are listed below:

Mol	Chain	Res	Type	Atoms	Z	Observed(Å)	Ideal(Å)
2	F	192	PTR	OH-CZ	-4.22	1.31	1.40
1	A	238	SEP	P-O1P	4.05	1.63	1.50
1	D	238	SEP	P-O1P	3.73	1.62	1.50
1	A	192	PTR	OH-CZ	-3.60	1.32	1.40
1	A	238	SEP	P-OG	2.73	1.68	1.60

All (5) bond angle outliers are listed below:

Mol	Chain	Res	Type	Atoms	Z	Observed(°)	Ideal(°)
1	A	238	SEP	OG-CB-CA	5.95	113.94	108.14
1	A	238	SEP	O3P-P-OG	4.20	117.63	106.67
1	D	238	SEP	OG-CB-CA	3.78	111.82	108.14
1	A	238	SEP	OG-P-O1P	3.17	115.00	106.44
1	A	192	PTR	O3P-P-OH	2.60	113.01	105.32

There are no chirality outliers.

5 of 11 torsion outliers are listed below:

Mol	Chain	Res	Type	Atoms
1	D	238	SEP	N-CA-CB-OG
1	D	238	SEP	C-CA-CB-OG
1	D	238	SEP	CB-OG-P-O1P
1	D	238	SEP	CB-OG-P-O2P
1	D	238	SEP	CB-OG-P-O3P

There are no ring outliers.

4 monomers are involved in 4 short contacts:

Mol	Chain	Res	Type	Clashes	Symm-Clashes
2	F	192	PTR	1	0
1	D	238	SEP	1	0

Continued on next page...

Continued from previous page...

Mol	Chain	Res	Type	Clashes	Symm-Clashes
1	A	192	PTR	1	0
1	A	238	SEP	1	0

5.5 Carbohydrates [i](#)

There are no oligosaccharides in this entry.

5.6 Ligand geometry [i](#)

6 ligands are modelled in this entry.

In the following table, the Counts columns list the number of bonds (or angles) for which Mogul statistics could be retrieved, the number of bonds (or angles) that are observed in the model and the number of bonds (or angles) that are defined in the Chemical Component Dictionary. The Link column lists molecule types, if any, to which the group is linked. The Z score for a bond length (or angle) is the number of standard deviations the observed value is removed from the expected value. A bond length (or angle) with $|Z| > 2$ is considered an outlier worth inspection. RMSZ is the root-mean-square of all Z scores of the bond lengths (or angles).

Mol	Type	Chain	Res	Link	Bond lengths			Bond angles		
					Counts	RMSZ	$\# Z > 2$	Counts	RMSZ	$\# Z > 2$
3	A1IYF	D	402	-	44,44,44	2.96	12 (27%)	55,66,66	1.85	15 (27%)
4	PO4	B	401	-	4,4,4	0.91	0	6,6,6	0.50	0
3	A1IYF	F	401	-	44,44,44	2.40	13 (29%)	55,66,66	1.87	15 (27%)
3	A1IYF	B	402	-	44,44,44	2.70	16 (36%)	55,66,66	1.93	15 (27%)
4	PO4	D	401	-	4,4,4	1.01	0	6,6,6	0.35	0
3	A1IYF	A	401	-	44,44,44	2.39	14 (31%)	55,66,66	1.79	10 (18%)

In the following table, the Chirals column lists the number of chiral outliers, the number of chiral centers analysed, the number of these observed in the model and the number defined in the Chemical Component Dictionary. Similar counts are reported in the Torsion and Rings columns. '-' means no outliers of that kind were identified.

Mol	Type	Chain	Res	Link	Chirals	Torsions	Rings
3	A1IYF	D	402	-	-	0/14/49/49	0/6/7/7
3	A1IYF	A	401	-	-	1/14/49/49	0/6/7/7
3	A1IYF	F	401	-	-	0/14/49/49	0/6/7/7
3	A1IYF	B	402	-	-	0/14/49/49	0/6/7/7

The worst 5 of 55 bond length outliers are listed below:

Mol	Chain	Res	Type	Atoms	Z	Observed(Å)	Ideal(Å)
3	D	402	A1IYF	C21-C19	-12.82	1.33	1.51
3	B	402	A1IYF	C21-C19	-9.43	1.37	1.51
3	A	401	A1IYF	C21-C19	-8.42	1.39	1.51
3	F	401	A1IYF	C21-C19	-7.88	1.40	1.51
3	F	401	A1IYF	C11-N12	7.22	1.57	1.47

The worst 5 of 55 bond angle outliers are listed below:

Mol	Chain	Res	Type	Atoms	Z	Observed(°)	Ideal(°)
3	D	402	A1IYF	O08-C07-N09	-5.28	112.77	124.05
3	A	401	A1IYF	C30-N34-C33	5.23	109.68	106.97
3	B	402	A1IYF	O08-C07-N09	-5.20	112.94	124.05
3	F	401	A1IYF	O08-C07-N09	-4.80	113.79	124.05
3	A	401	A1IYF	O08-C07-N04	-4.34	114.78	124.05

There are no chirality outliers.

All (1) torsion outliers are listed below:

Mol	Chain	Res	Type	Atoms
3	A	401	A1IYF	C23-C24-C30-N34

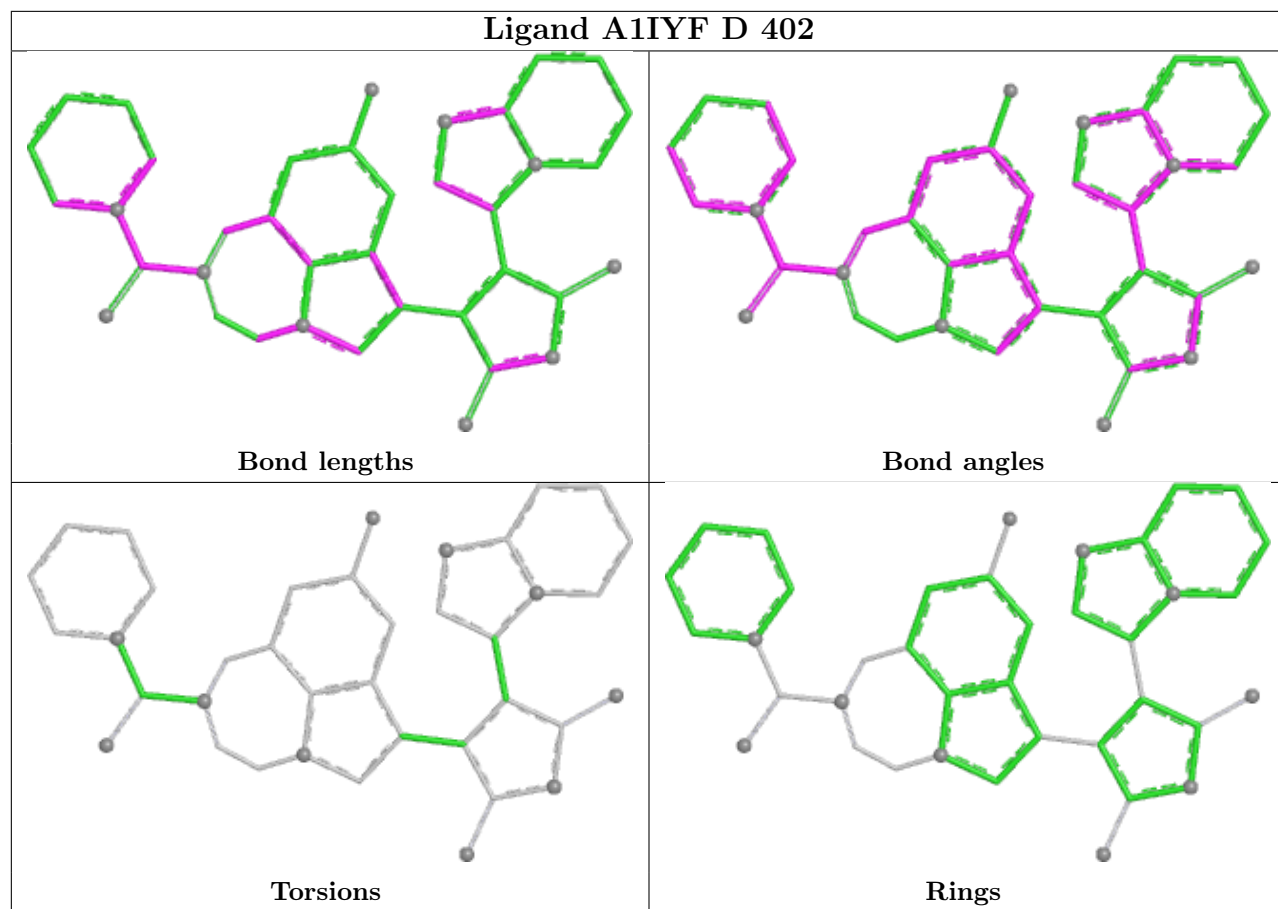
There are no ring outliers.

2 monomers are involved in 3 short contacts:

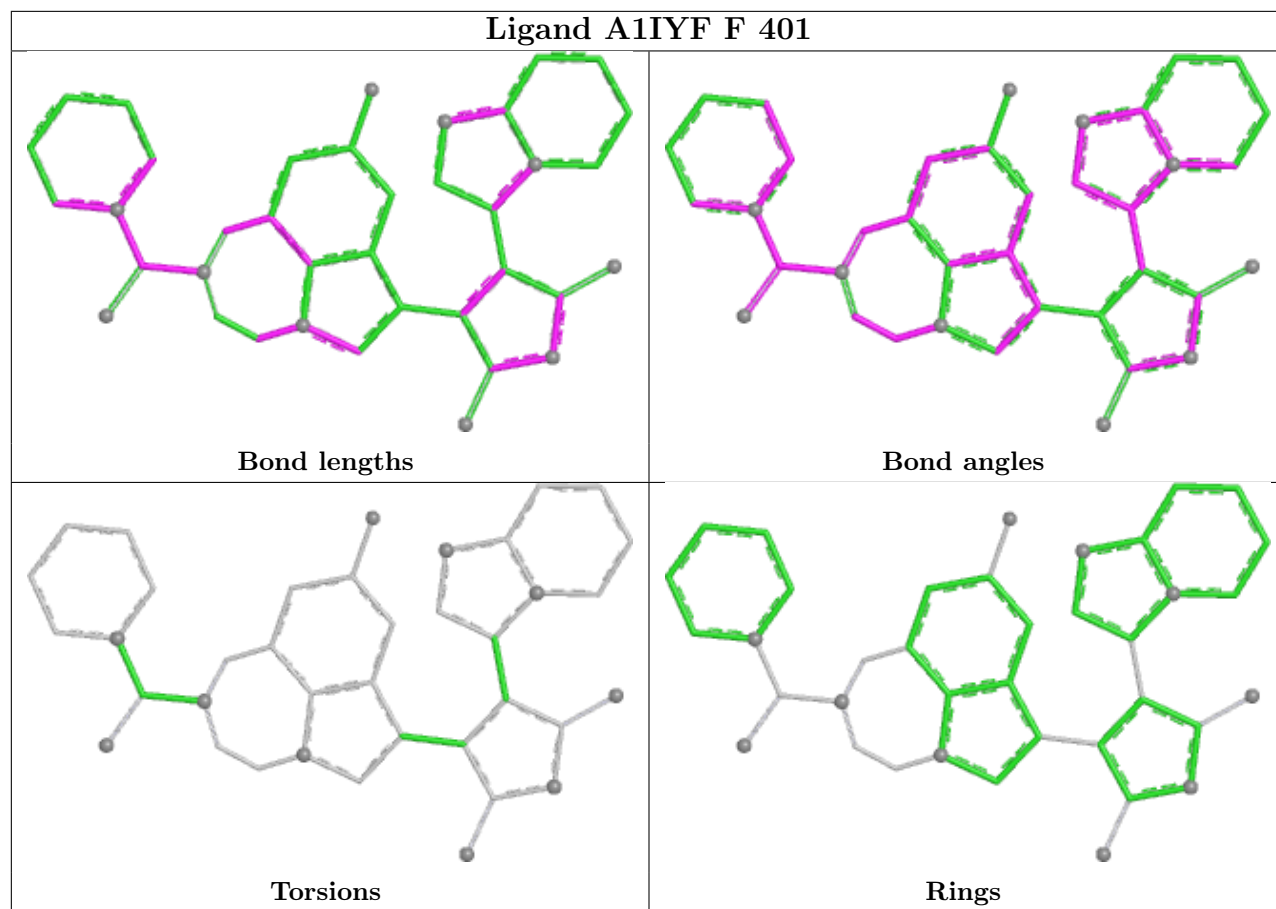
Mol	Chain	Res	Type	Clashes	Symm-Clashes
3	D	402	A1IYF	1	0
3	B	402	A1IYF	2	0

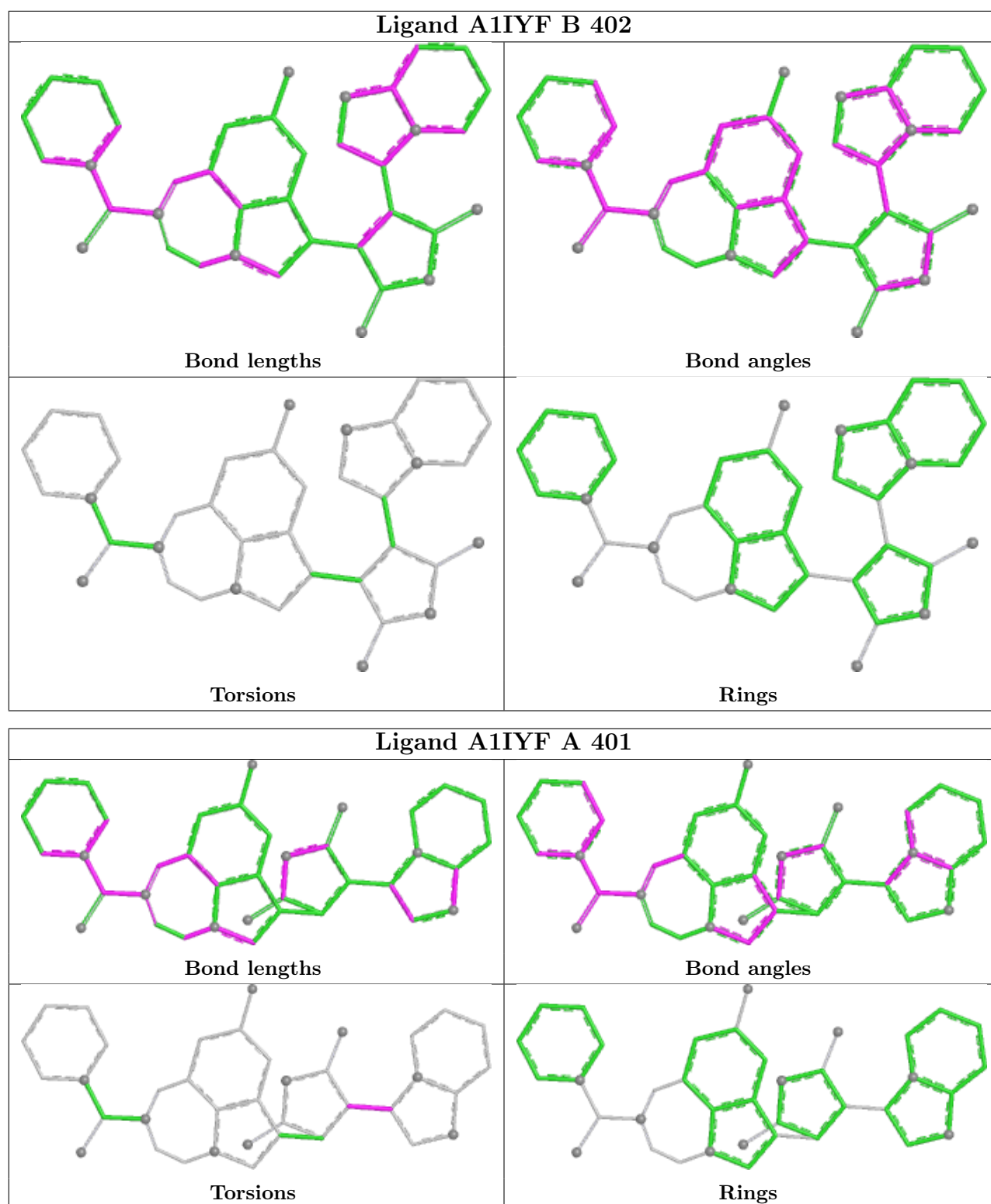
The following is a two-dimensional graphical depiction of Mogul quality analysis of bond lengths, bond angles, torsion angles, and ring geometry for all instances of the Ligand of Interest. In addition, ligands with molecular weight > 250 and outliers as shown on the validation Tables will also be included. For torsion angles, if less than 5% of the Mogul distribution of torsion angles is within 10 degrees of the torsion angle in question, then that torsion angle is considered an outlier. Any bond that is central to one or more torsion angles identified as an outlier by Mogul will be highlighted in the graph. For rings, the root-mean-square deviation (RMSD) between the ring in question and similar rings identified by Mogul is calculated over all ring torsion angles. If the average RMSD is greater than 60 degrees and the minimal RMSD between the ring in question and any Mogul-identified rings is also greater than 60 degrees, then that ring is considered an outlier. The outliers are highlighted in purple. The color gray indicates Mogul did not find sufficient equivalents in the CSD to analyse the geometry.

Ligand A1IYF D 402



Ligand A1IYF F 401





5.7 Other polymers ⓘ

There are no such residues in this entry.

5.8 Polymer linkage issues ⓘ

There are no chain breaks in this entry.

6 Fit of model and data [i](#)

6.1 Protein, DNA and RNA chains [i](#)

In the following table, the column labelled ‘#RSRZ > 2’ contains the number (and percentage) of RSRZ outliers, followed by percent RSRZ outliers for the chain as percentile scores relative to all X-ray entries and entries of similar resolution. The OWAB column contains the minimum, median, 95th percentile and maximum values of the occupancy-weighted average B-factor per residue. The column labelled ‘Q < 0.9’ lists the number of (and percentage) of residues with an average occupancy less than 0.9.

Mol	Chain	Analysed	<RSRZ>	#RSRZ>2	OWAB(Å ²)	Q<0.9
1	A	330/373 (88%)	0.19	15 (4%) 38 30	37, 52, 88, 115	0
1	D	326/373 (87%)	0.25	13 (3%) 42 34	35, 52, 86, 108	0
2	B	332/373 (89%)	0.33	15 (4%) 38 30	38, 55, 95, 118	0
2	F	324/373 (86%)	0.57	22 (6%) 23 18	42, 67, 99, 123	0
All	All	1312/1492 (87%)	0.34	65 (4%) 34 27	35, 56, 93, 123	0

The worst 5 of 65 RSRZ outliers are listed below:

Mol	Chain	Res	Type	RSRZ
2	F	39	PHE	4.8
1	D	99	ASP	4.3
2	F	270	PRO	4.1
1	D	196	ARG	3.7
2	F	290	THR	3.7

6.2 Non-standard residues in protein, DNA, RNA chains [i](#)

In the following table, the Atoms column lists the number of modelled atoms in the group and the number defined in the chemical component dictionary. The B-factors column lists the minimum, median, 95th percentile and maximum values of B factors of atoms in the group. The column labelled ‘Q < 0.9’ lists the number of atoms with occupancy less than 0.9.

Mol	Type	Chain	Res	Atoms	RSCC	RSR	B-factors(Å ²)	Q<0.9
2	PTR	F	192	16/17	0.68	0.15	105,112,115,115	0
1	PTR	A	192	16/17	0.73	0.17	87,96,104,105	0
1	SEP	A	238	10/11	0.81	0.14	50,59,71,80	0
1	SEP	D	238	10/11	0.83	0.12	66,76,89,92	0

6.3 Carbohydrates [i](#)

There are no oligosaccharides in this entry.

6.4 Ligands [i](#)

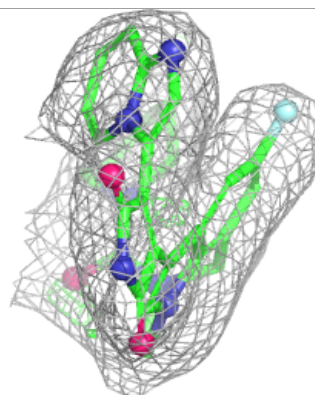
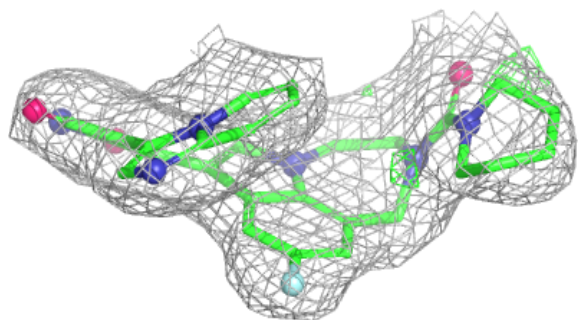
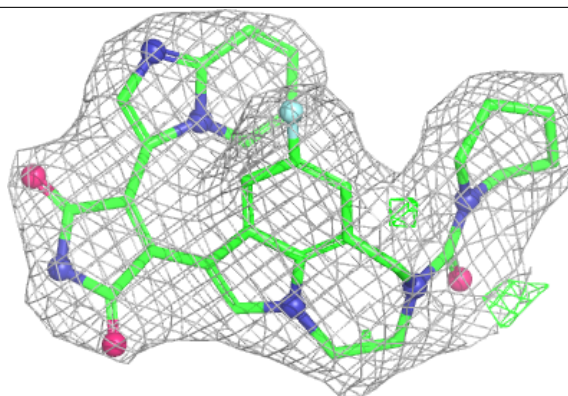
In the following table, the Atoms column lists the number of modelled atoms in the group and the number defined in the chemical component dictionary. The B-factors column lists the minimum, median, 95th percentile and maximum values of B factors of atoms in the group. The column labelled 'Q< 0.9' lists the number of atoms with occupancy less than 0.9.

Mol	Type	Chain	Res	Atoms	RSCC	RSR	B-factors(\AA^2)	Q<0.9
4	PO4	D	401	5/5	0.76	0.10	75,78,94,97	0
4	PO4	B	401	5/5	0.90	0.08	76,77,86,94	0
3	A1IYF	F	401	38/38	0.94	0.10	40,47,53,55	0
3	A1IYF	D	402	38/38	0.95	0.09	31,39,43,47	0
3	A1IYF	B	402	38/38	0.95	0.08	35,42,49,50	0
3	A1IYF	A	401	38/38	0.96	0.09	34,41,46,50	0

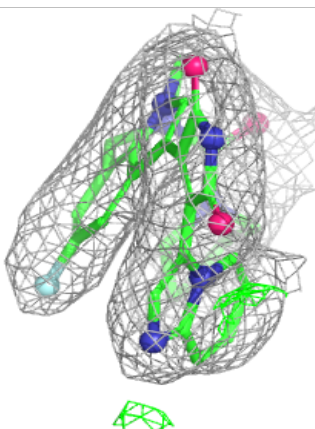
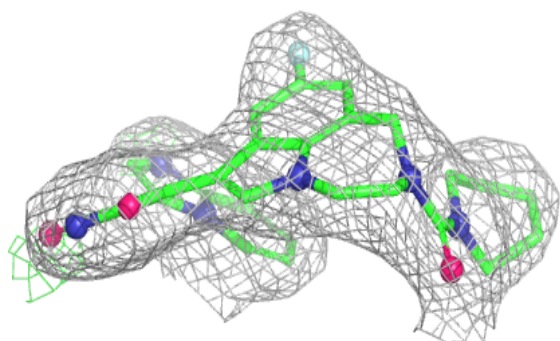
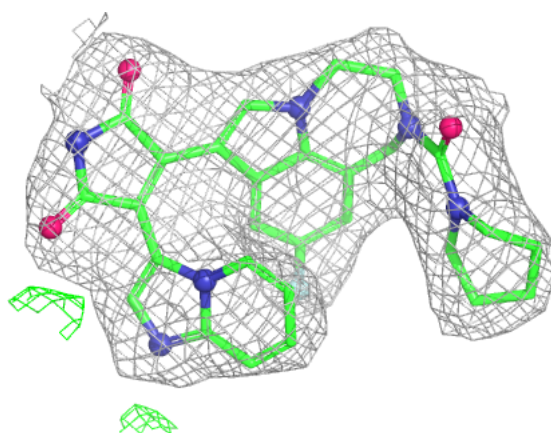
The following is a graphical depiction of the model fit to experimental electron density of all instances of the Ligand of Interest. In addition, ligands with molecular weight > 250 and outliers as shown on the geometry validation Tables will also be included. Each fit is shown from different orientation to approximate a three-dimensional view.

Electron density around A1IYF F 401:

$2mF_o-DF_c$ (at 0.7 rmsd) in gray
 mF_o-DF_c (at 3 rmsd) in purple (negative)
and green (positive)

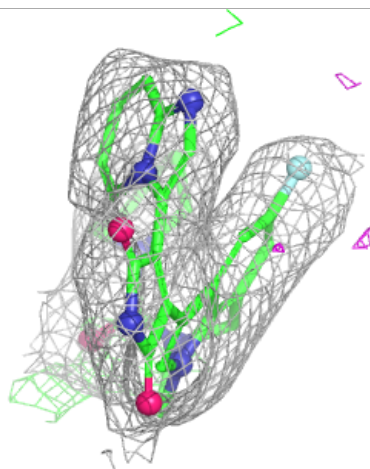
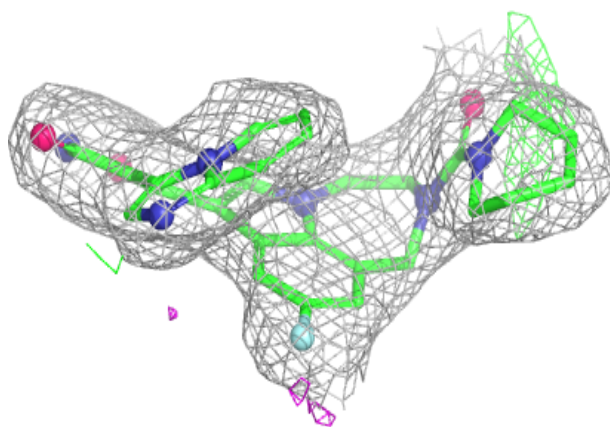
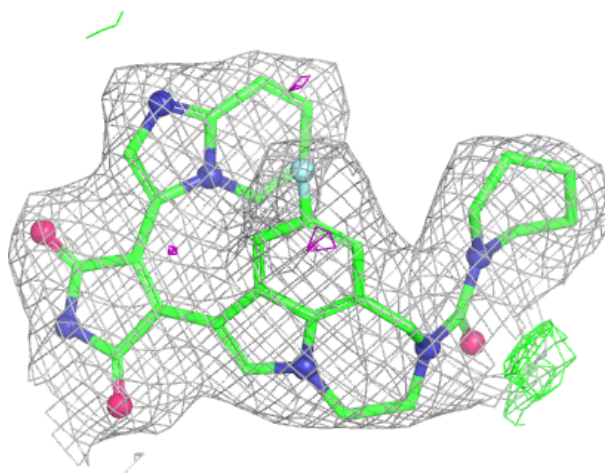
**Electron density around A1IYF D 402:**

$2mF_o-DF_c$ (at 0.7 rmsd) in gray
 mF_o-DF_c (at 3 rmsd) in purple (negative)
and green (positive)



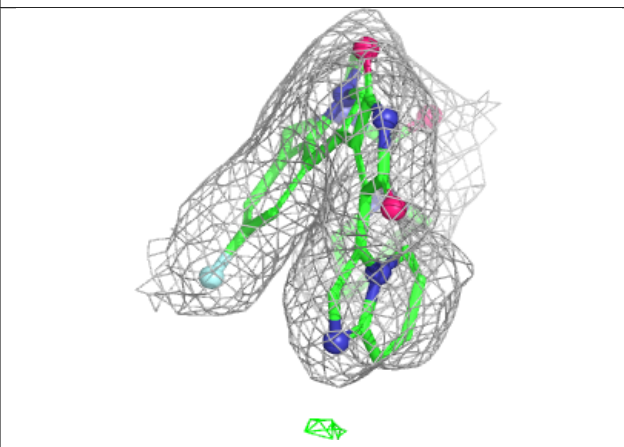
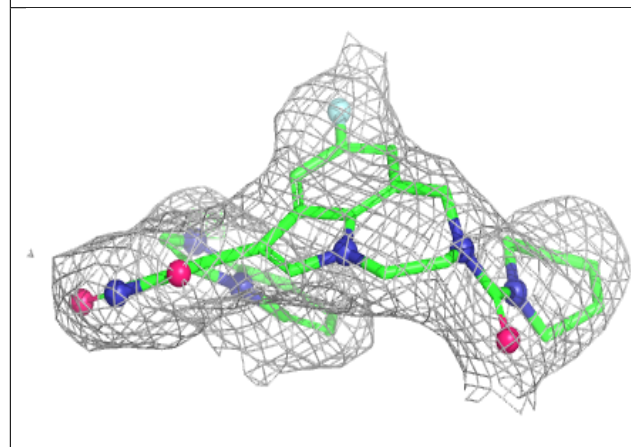
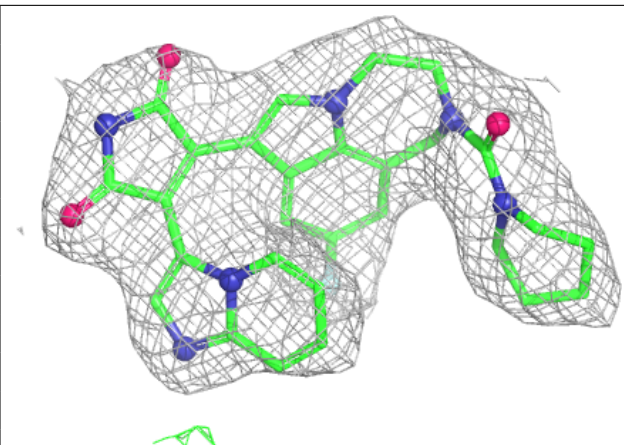
Electron density around A1IYF B 402:

$2mF_o-DF_c$ (at 0.7 rmsd) in gray
 mF_o-DF_c (at 3 rmsd) in purple (negative)
and green (positive)



Electron density around A1IYF A 401:

$2mF_o - DF_c$ (at 0.7 rmsd) in gray
 $mF_o - DF_c$ (at 3 rmsd) in purple (negative)
and green (positive)



6.5 Other polymers [i](#)

There are no such residues in this entry.