



# wwPDB EM Validation Summary Report ⓘ

Mar 9, 2026 – 07:13 PM UTC

PDB ID : 9HBP / pdb\_00009hbp  
EMDB ID : EMD-52024  
Title : Cryo-EM structure of the canine distemper virus tetrameric attachment H glycoprotein in complex with two different Nanobodies  
Authors : Djabeur, N.; Jeckelmann, J.M.; Fotiadis, D.  
Deposited on : 2024-11-07  
Resolution : 4.30 Å (reported)  
Based on initial models : ., 7ZNY

This is a wwPDB EM Validation Summary Report for a publicly released PDB entry.

We welcome your comments at [validation@mail.wwpdb.org](mailto:validation@mail.wwpdb.org)

A user guide is available at

<https://www.wwpdb.org/validation/2017/EMValidationReportHelp>  
with specific help available everywhere you see the ⓘ symbol.

The types of validation reports are described at

<http://www.wwpdb.org/validation/2017/FAQs#types>.

---

The following versions of software and data (see [references ⓘ](#)) were used in the production of this report:

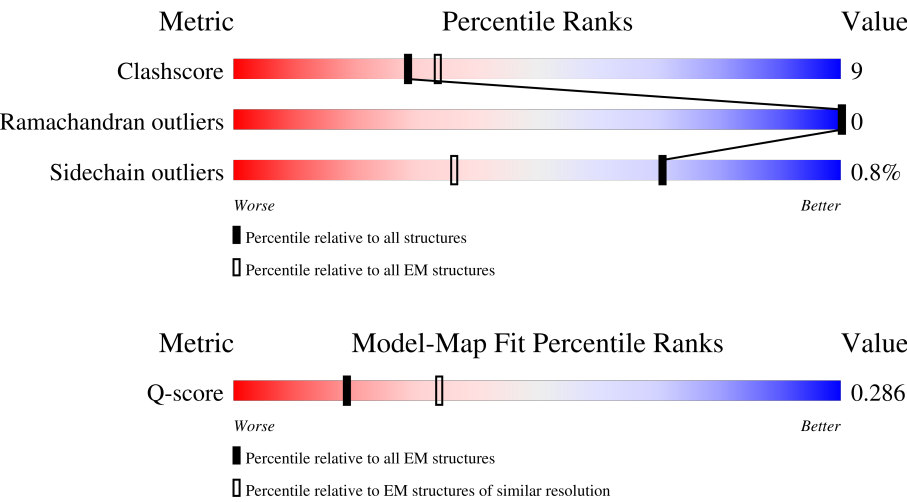
EMDB validation analysis : 0.0.1.dev132  
Mogul : 2022.3.0, CSD as543be (2022)  
MolProbity : 4-5-2 with Phenix2.0  
Buster-report : wwPDB partial adaption of 1.1.7 (2018)  
Percentile statistics : 20250101.v01 (using entries in the PDB archive January 1st 2025)  
EM percentile statistics : 202505.v01 (Using data in the EMDb archive up until May 2025)  
MapQ : 1.9.13  
Ideal geometry (proteins) : Engh & Huber (2001)  
Ideal geometry (DNA, RNA) : Parkinson et al. (1996)  
Validation Pipeline (wwPDB-VP) : 2.49

# 1 Overall quality at a glance i

The following experimental techniques were used to determine the structure:  
*ELECTRON MICROSCOPY*

The reported resolution of this entry is 4.30 Å.

Percentile scores (ranging between 0-100) for global validation metrics of the entry are shown in the following graphic. The table shows the number of entries on which the scores are based.



Metric	Whole archive (#Entries)	EM structures (#Entries)	Similar EM resolution (#Entries, resolution range(Å))
Clashscore	229148	23984	-
Ramachandran outliers	224038	23583	-
Sidechain outliers	223484	23102	-
Q-score	-	25397	4585 ( 3.80 - 4.80 )

The table below summarises the geometric issues observed across the polymeric chains and their fit to the map. The red, orange, yellow and green segments of the bar indicate the fraction of residues that contain outliers for  $\geq 3$ , 2, 1 and 0 types of geometric quality criteria respectively. A grey segment represents the fraction of residues that are not modelled. The numeric value for each fraction is indicated below the corresponding segment, with a dot representing fractions  $\leq 5\%$ . The upper red bar (where present) indicates the fraction of residues that have poor fit to the EM map (all-atom inclusion  $< 40\%$ ). The numeric value is given above the bar.

Mol	Chain	Length	Quality of chain
1	A	607	<div><div></div><div>53%17%29%</div></div>
1	B	607	<div><div></div><div>51%16%32%</div></div>
1	C	607	<div><div>7%</div><div></div><div>62%8%30%</div></div>
1	D	607	<div><div>11%</div><div></div><div>59%9%32%</div></div>

Continued on next page...

Continued from previous page...

Mol	Chain	Length	Quality of chain
2	E	124	<div><div></div><div>61%35%</div><div></div></div>
2	F	124	<div><div></div><div>68%23%9%</div><div></div></div>
2	I	124	<div><div></div><div>33%74%21%5%</div><div></div></div>
2	J	124	<div><div></div><div>37%77%10%13%</div><div></div></div>
3	G	127	<div><div></div><div>71%23%6%</div><div></div></div>
3	H	127	<div><div></div><div>61%31%9%</div><div></div></div>
3	K	127	<div><div></div><div>31%84%6%9%</div><div></div></div>
3	L	127	<div><div></div><div>23%81%9%9%</div><div></div></div>

## 2 Entry composition

There are 4 unique types of molecules in this entry. The entry contains 40573 atoms, of which 20198 are hydrogens and 0 are deuteriums.

In the tables below, the AltConf column contains the number of residues with at least one atom in alternate conformation and the Trace column contains the number of residues modelled with at most 2 atoms.

- Molecule 1 is a protein called Hemagglutinin glycoprotein.

Mol	Chain	Residues	Atoms						AltConf	Trace
1	A	428	Total	C	H	N	O	S	0	0
			6718	2164	3357	551	627	19		
1	B	415	Total	C	H	N	O	S	0	0
			6484	2096	3231	529	609	19		
1	C	427	Total	C	H	N	O	S	0	0
			6701	2159	3349	549	625	19		
1	D	414	Total	C	H	N	O	S	0	0
			6461	2087	3220	528	607	19		

- Molecule 2 is a protein called Nanobody H7.

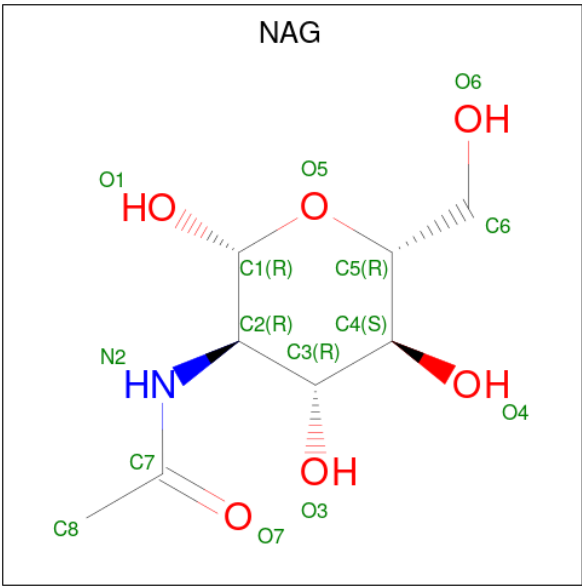
Mol	Chain	Residues	Atoms						AltConf	Trace
2	E	122	Total	C	H	N	O	S	0	0
			1826	573	903	166	178	6		
2	F	113	Total	C	H	N	O	S	0	0
			1722	542	853	157	164	6		
2	I	118	Total	C	H	N	O	S	0	0
			1773	557	878	160	172	6		
2	J	108	Total	C	H	N	O	S	0	0
			1639	516	811	151	155	6		

- Molecule 3 is a protein called Nanobody H9.

Mol	Chain	Residues	Atoms						AltConf	Trace
3	G	119	Total	C	H	N	O	S	0	0
			1814	570	899	161	180	4		
3	H	116	Total	C	H	N	O	S	0	0
			1794	563	892	159	176	4		
3	K	115	Total	C	H	N	O	S	0	0
			1749	551	866	153	175	4		
3	L	115	Total	C	H	N	O	S	0	0
			1784	560	887	158	175	4		

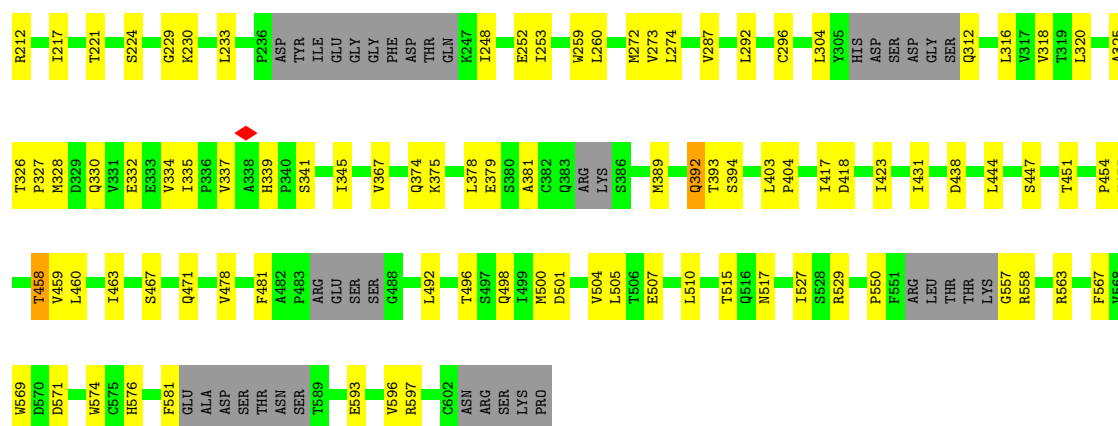
- Molecule 4 is 2-acetamido-2-deoxy-beta-D-glucopyranose (CCD ID: NAG) (formula:

C<sub>8</sub>H<sub>15</sub>NO<sub>6</sub>) (labeled as "Ligand of Interest" by depositor).

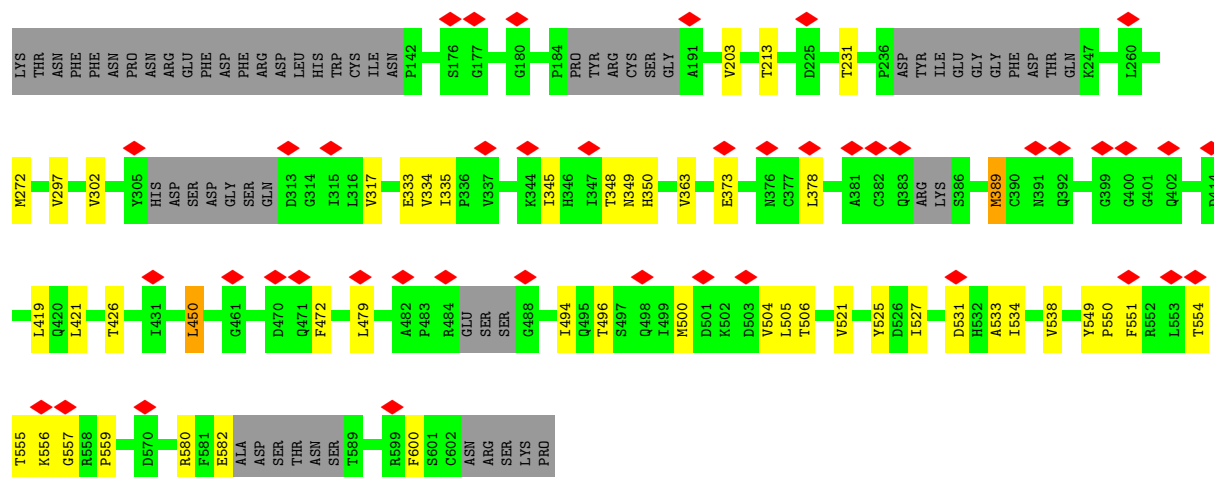


Mol	Chain	Residues	Atoms					AltConf
4	A	1	Total	C	H	N	O	0
			27	8	13	1	5	
4	B	1	Total	C	H	N	O	0
			27	8	13	1	5	
4	C	1	Total	C	H	N	O	0
			27	8	13	1	5	
4	D	1	Total	C	H	N	O	0
			27	8	13	1	5	

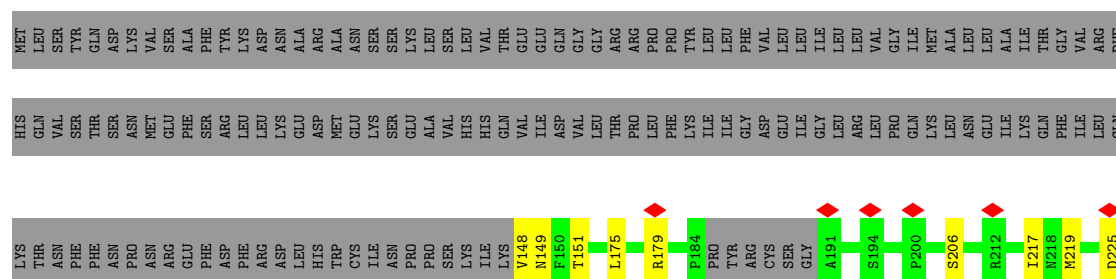


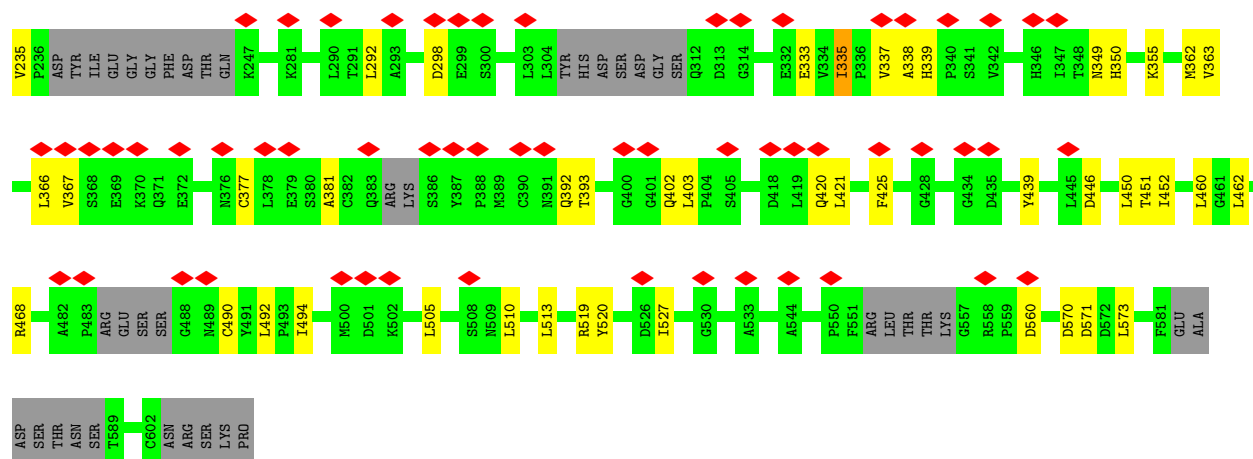


• Molecule 1: Hemagglutinin glycoprotein



• Molecule 1: Hemagglutinin glycoprotein





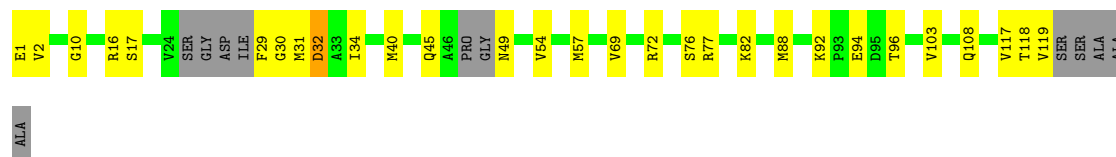
• Molecule 2: Nanobody H7

Chain E: 61% 35%



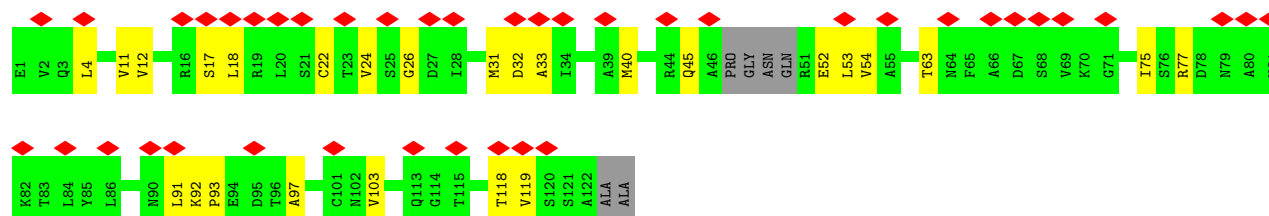
• Molecule 2: Nanobody H7

Chain F: 68% 23% 9%



• Molecule 2: Nanobody H7

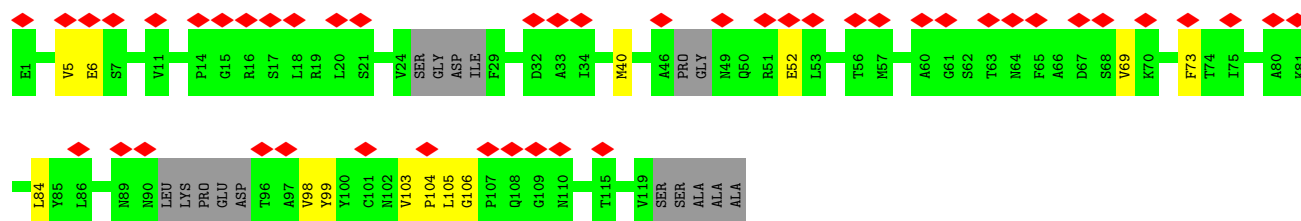
Chain I: 33% 74% 21% 5%



• Molecule 2: Nanobody H7

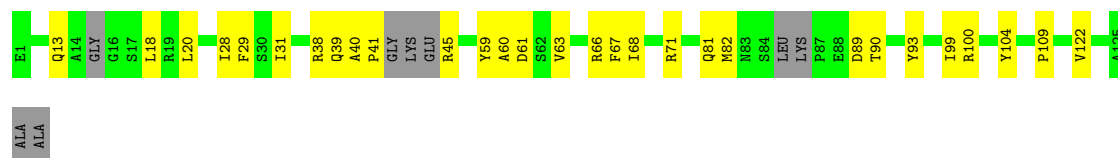
Chain J: 37% 77% 10% 13%





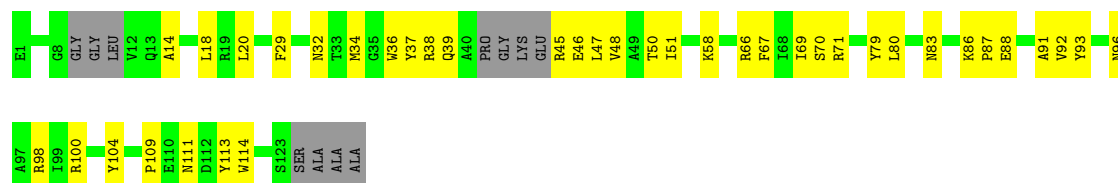
• Molecule 3: Nanobody H9

Chain G: 71% 23% 6%



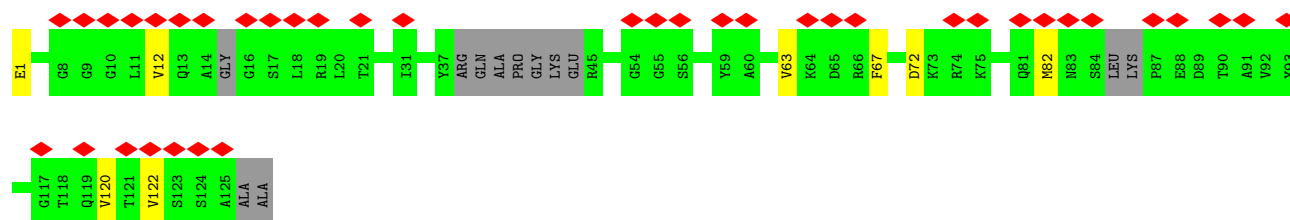
• Molecule 3: Nanobody H9

Chain H: 61% 31% 9%



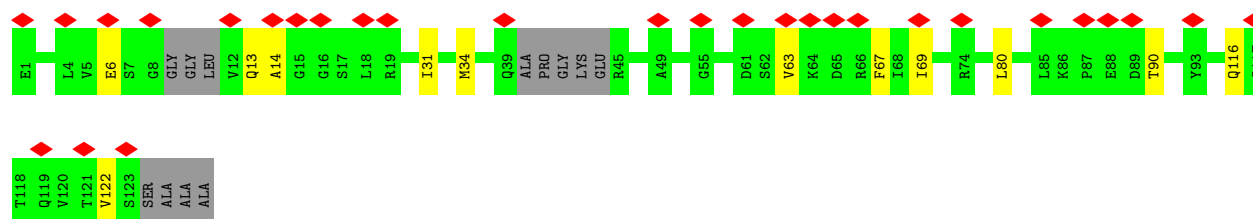
• Molecule 3: Nanobody H9

Chain K: 31% 84% 6% 9%



• Molecule 3: Nanobody H9

Chain L: 23% 81% 9% 9%



## 4 Experimental information

Property	Value	Source
EM reconstruction method	SINGLE PARTICLE	Depositor
Imposed symmetry	POINT, C1	Depositor
Number of particles used	118721	Depositor
Resolution determination method	FSC 0.143 CUT-OFF	Depositor
CTF correction method	PHASE FLIPPING AND AMPLITUDE CORRECTION	Depositor
Microscope	TFS KRIOS	Depositor
Voltage (kV)	300	Depositor
Electron dose ( $e^-/\text{\AA}^2$ )	30	Depositor
Minimum defocus (nm)	800	Depositor
Maximum defocus (nm)	2500	Depositor
Magnification	Not provided	
Image detector	FEI FALCON IV (4k x 4k)	Depositor
Maximum map value	50.462	Depositor
Minimum map value	-37.407	Depositor
Average map value	0.000	Depositor
Map value standard deviation	1.000	Depositor
Recommended contour level	3.95	Depositor
Map size ( $\text{\AA}$ )	351.84, 351.84, 351.84	wwPDB
Map dimensions	480, 480, 480	wwPDB
Map angles ( $^\circ$ )	90.0, 90.0, 90.0	wwPDB
Pixel spacing ( $\text{\AA}$ )	0.733, 0.733, 0.733	Depositor

## 5 Model quality [i](#)

### 5.1 Standard geometry [i](#)

Bond lengths and bond angles in the following residue types are not validated in this section: NAG

The Z score for a bond length (or angle) is the number of standard deviations the observed value is removed from the expected value. A bond length (or angle) with  $|Z| > 5$  is considered an outlier worth inspection. RMSZ is the root-mean-square of all Z scores of the bond lengths (or angles).

Mol	Chain	Bond lengths		Bond angles	
		RMSZ	$\# Z  > 5$	RMSZ	$\# Z  > 5$
1	A	0.29	0/3437	0.45	0/4678
1	B	0.34	0/3326	0.55	0/4529
1	C	0.22	0/3428	0.39	0/4666
1	D	0.26	0/3313	0.42	0/4511
2	E	0.28	0/940	0.47	0/1271
2	F	0.22	0/883	0.36	0/1190
2	I	0.18	0/910	0.40	0/1228
2	J	0.14	0/840	0.34	0/1130
3	G	0.38	0/928	0.52	0/1253
3	H	0.21	0/915	0.43	0/1236
3	K	0.13	0/895	0.34	0/1208
3	L	0.15	0/910	0.39	0/1229
All	All	0.26	0/20725	0.44	0/28129

There are no bond length outliers.

There are no bond angle outliers.

There are no chirality outliers.

There are no planarity outliers.

### 5.2 Too-close contacts [i](#)

In the following table, the Non-H and H(model) columns list the number of non-hydrogen atoms and hydrogen atoms in the chain respectively. The H(added) column lists the number of hydrogen atoms added and optimized by MolProbity. The Clashes column lists the number of clashes within the asymmetric unit, whereas Symm-Clashes lists symmetry-related clashes.

Mol	Chain	Non-H	H(model)	H(added)	Clashes	Symm-Clashes
1	A	3361	3357	3357	89	0

*Continued on next page...*

*Continued from previous page...*

Mol	Chain	Non-H	H(model)	H(added)	Clashes	Symm-Clashes
1	B	3253	3231	3231	86	0
1	C	3352	3349	3349	36	0
1	D	3241	3220	3220	45	0
2	E	923	903	903	38	0
2	F	869	853	853	25	0
2	I	895	878	878	18	0
2	J	828	811	811	7	0
3	G	915	899	899	24	0
3	H	902	892	892	28	0
3	K	883	866	866	6	0
3	L	897	887	887	7	0
4	A	14	13	13	0	0
4	B	14	13	13	0	0
4	C	14	13	13	0	0
4	D	14	13	13	1	0
All	All	20375	20198	20198	381	0

The all-atom clashscore is defined as the number of clashes found per 1000 atoms (including hydrogen atoms). The all-atom clashscore for this structure is 9.

The worst 5 of 381 close contacts within the same asymmetric unit are listed below, sorted by their clash magnitude.

Atom-1	Atom-2	Interatomic distance (Å)	Clash overlap (Å)
1:A:554:THR:O	1:A:555:THR:HG22	1.61	1.00
2:F:57:MET:SD	2:F:77:ARG:HD3	2.01	1.00
1:C:554:THR:O	1:C:555:THR:HG22	1.61	1.00
1:A:179:ARG:H	1:A:568:VAL:HG13	1.25	1.00
3:H:67:PHE:CD2	3:H:80:LEU:HD21	1.99	0.96

There are no symmetry-related clashes.

## 5.3 Torsion angles [i](#)

### 5.3.1 Protein backbone [i](#)

In the following table, the Percentiles column shows the percent Ramachandran outliers of the chain as a percentile score with respect to all PDB entries followed by that with respect to all EM entries.

The Analysed column shows the number of residues for which the backbone conformation was analysed, and the total number of residues.

Mol	Chain	Analysed	Favoured	Allowed	Outliers	Percentiles	
1	A	414/607 (68%)	388 (94%)	26 (6%)	0	100	100
1	B	399/607 (66%)	364 (91%)	35 (9%)	0	100	100
1	C	413/607 (68%)	388 (94%)	25 (6%)	0	100	100
1	D	398/607 (66%)	371 (93%)	27 (7%)	0	100	100
2	E	120/124 (97%)	109 (91%)	11 (9%)	0	100	100
2	F	107/124 (86%)	97 (91%)	10 (9%)	0	100	100
2	I	114/124 (92%)	103 (90%)	11 (10%)	0	100	100
2	J	100/124 (81%)	97 (97%)	3 (3%)	0	100	100
3	G	111/127 (87%)	104 (94%)	7 (6%)	0	100	100
3	H	110/127 (87%)	106 (96%)	4 (4%)	0	100	100
3	K	107/127 (84%)	100 (94%)	7 (6%)	0	100	100
3	L	109/127 (86%)	99 (91%)	10 (9%)	0	100	100
All	All	2502/3432 (73%)	2326 (93%)	176 (7%)	0	100	100

There are no Ramachandran outliers to report.

### 5.3.2 Protein sidechains ⓘ

In the following table, the Percentiles column shows the percent sidechain outliers of the chain as a percentile score with respect to all PDB entries followed by that with respect to all EM entries.

The Analysed column shows the number of residues for which the sidechain conformation was analysed, and the total number of residues.

Mol	Chain	Analysed	Rotameric	Outliers	Percentiles	
1	A	382/544 (70%)	380 (100%)	2 (0%)	81	81
1	B	369/544 (68%)	363 (98%)	6 (2%)	55	69
1	C	381/544 (70%)	378 (99%)	3 (1%)	73	77
1	D	368/544 (68%)	365 (99%)	3 (1%)	73	77
2	E	99/99 (100%)	97 (98%)	2 (2%)	48	66
2	F	93/99 (94%)	92 (99%)	1 (1%)	65	74
2	I	96/99 (97%)	96 (100%)	0	100	100
2	J	88/99 (89%)	88 (100%)	0	100	100
3	G	99/103 (96%)	98 (99%)	1 (1%)	68	76

*Continued on next page...*

*Continued from previous page...*

Mol	Chain	Analysed	Rotameric	Outliers	Percentiles	
3	H	98/103 (95%)	98 (100%)	0	100	100
3	K	96/103 (93%)	95 (99%)	1 (1%)	68	76
3	L	98/103 (95%)	98 (100%)	0	100	100
All	All	2267/2984 (76%)	2248 (99%)	19 (1%)	70	77

5 of 19 residues with a non-rotameric sidechain are listed below:

Mol	Chain	Res	Type
1	C	450	LEU
1	D	403	LEU
3	K	72	ASP
1	D	377	CYS
2	E	29	PHE

Sometimes sidechains can be flipped to improve hydrogen bonding and reduce clashes. 5 of 15 such sidechains are listed below:

Mol	Chain	Res	Type
2	F	102	ASN
1	D	495	GLN
3	G	76	ASN
1	D	532	HIS
1	C	456	ASN

### 5.3.3 RNA ⓘ

There are no RNA molecules in this entry.

## 5.4 Non-standard residues in protein, DNA, RNA chains ⓘ

There are no non-standard protein/DNA/RNA residues in this entry.

## 5.5 Carbohydrates ⓘ

There are no oligosaccharides in this entry.

## 5.6 Ligand geometry

4 ligands are modelled in this entry.

In the following table, the Counts columns list the number of bonds (or angles) for which Mogul statistics could be retrieved, the number of bonds (or angles) that are observed in the model and the number of bonds (or angles) that are defined in the Chemical Component Dictionary. The Link column lists molecule types, if any, to which the group is linked. The Z score for a bond length (or angle) is the number of standard deviations the observed value is removed from the expected value. A bond length (or angle) with  $|Z| > 2$  is considered an outlier worth inspection. RMSZ is the root-mean-square of all Z scores of the bond lengths (or angles).

Mol	Type	Chain	Res	Link	Bond lengths			Bond angles		
					Counts	RMSZ	$\# Z  > 2$	Counts	RMSZ	$\# Z  > 2$
4	NAG	A	701	1	14,14,15	0.39	0	17,19,21	0.56	0
4	NAG	D	701	1	14,14,15	0.73	0	17,19,21	0.91	0
4	NAG	B	701	1	14,14,15	0.40	0	17,19,21	0.69	0
4	NAG	C	701	1	14,14,15	0.75	0	17,19,21	0.83	0

In the following table, the Chirals column lists the number of chiral outliers, the number of chiral centers analysed, the number of these observed in the model and the number defined in the Chemical Component Dictionary. Similar counts are reported in the Torsion and Rings columns. '-' means no outliers of that kind were identified.

Mol	Type	Chain	Res	Link	Chirals	Torsions	Rings
4	NAG	A	701	1	-	0/6/23/26	0/1/1/1
4	NAG	D	701	1	-	1/6/23/26	0/1/1/1
4	NAG	B	701	1	-	1/6/23/26	0/1/1/1
4	NAG	C	701	1	-	0/6/23/26	0/1/1/1

There are no bond length outliers.

There are no bond angle outliers.

There are no chirality outliers.

All (2) torsion outliers are listed below:

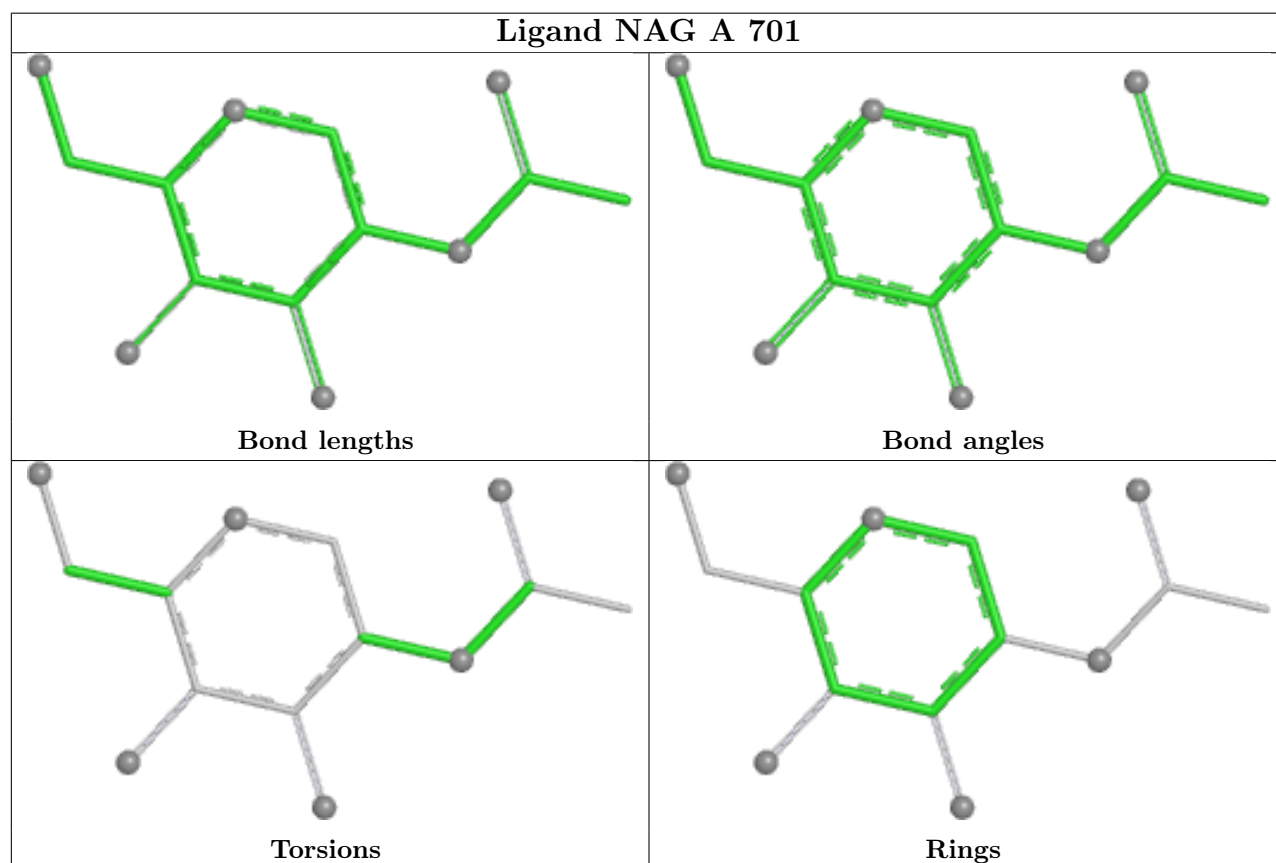
Mol	Chain	Res	Type	Atoms
4	B	701	NAG	O5-C5-C6-O6
4	D	701	NAG	O5-C5-C6-O6

There are no ring outliers.

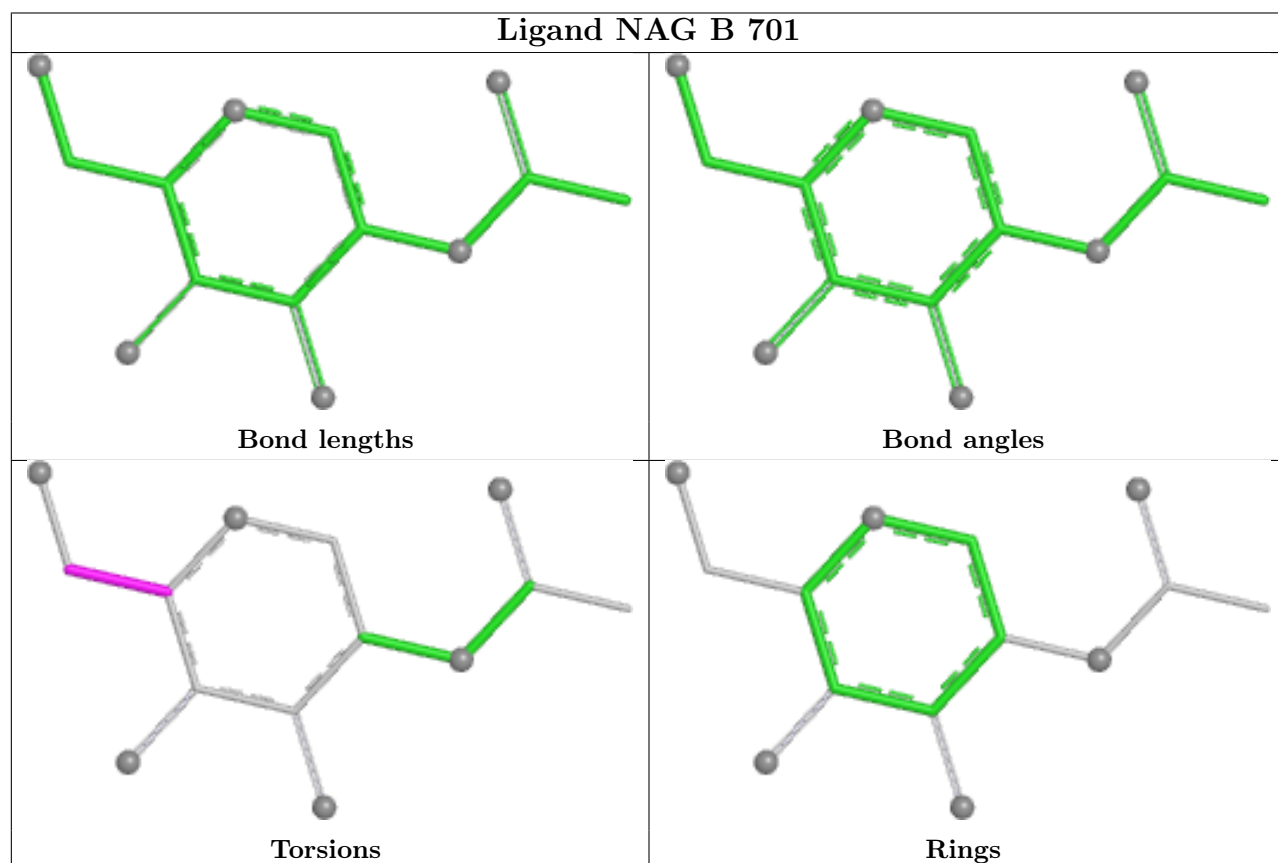
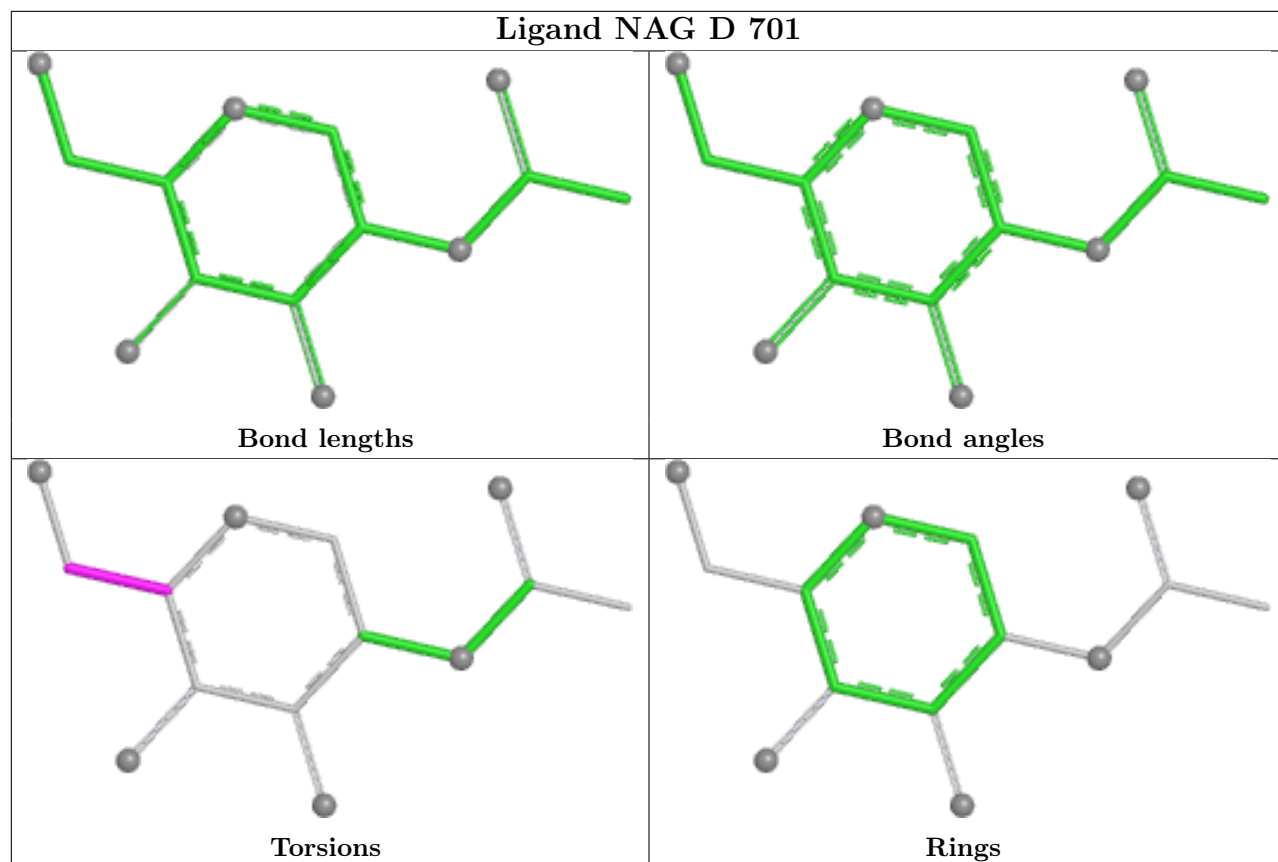
1 monomer is involved in 1 short contact:

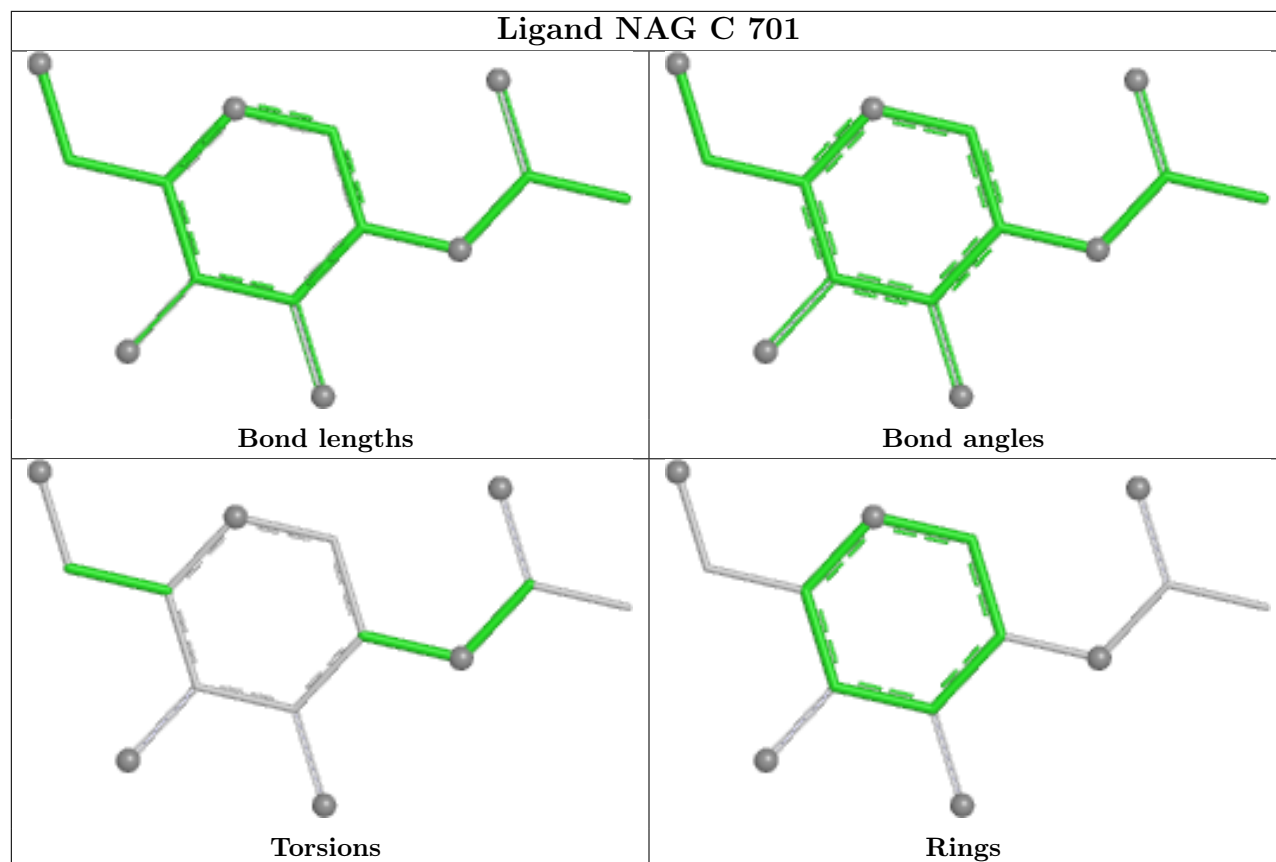
Mol	Chain	Res	Type	Clashes	Symm-Clashes
4	D	701	NAG	1	0

The following is a two-dimensional graphical depiction of Mogul quality analysis of bond lengths, bond angles, torsion angles, and ring geometry for all instances of the Ligand of Interest. In addition, ligands with molecular weight > 250 and outliers as shown on the validation Tables will also be included. For torsion angles, if less than 5% of the Mogul distribution of torsion angles is within 10 degrees of the torsion angle in question, then that torsion angle is considered an outlier. Any bond that is central to one or more torsion angles identified as an outlier by Mogul will be highlighted in the graph. For rings, the root-mean-square deviation (RMSD) between the ring in question and similar rings identified by Mogul is calculated over all ring torsion angles. If the average RMSD is greater than 60 degrees and the minimal RMSD between the ring in question and any Mogul-identified rings is also greater than 60 degrees, then that ring is considered an outlier. The outliers are highlighted in purple. The color gray indicates Mogul did not find sufficient equivalents in the CSD to analyse the geometry.









## 5.7 Other polymers [i](#)

There are no such residues in this entry.

## 5.8 Polymer linkage issues [i](#)

There are no chain breaks in this entry.

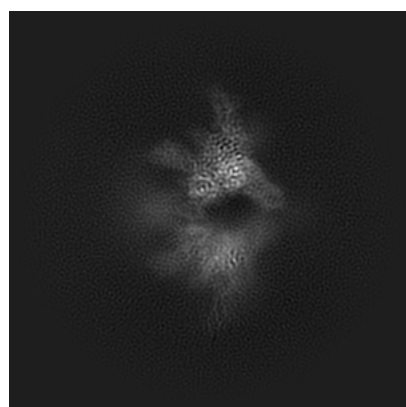
## 6 Map visualisation [i](#)

This section contains visualisations of the EMDB entry EMD-52024. These allow visual inspection of the internal detail of the map and identification of artifacts.

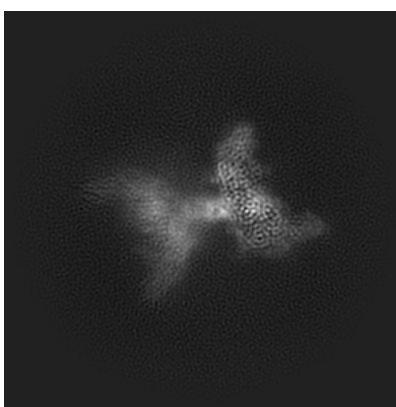
No raw map or half-maps were deposited for this entry and therefore no images, graphs, etc. pertaining to the raw map can be shown.

### 6.1 Orthogonal projections [i](#)

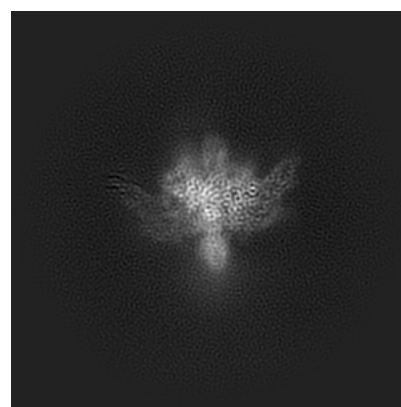
#### 6.1.1 Primary map



X



Y

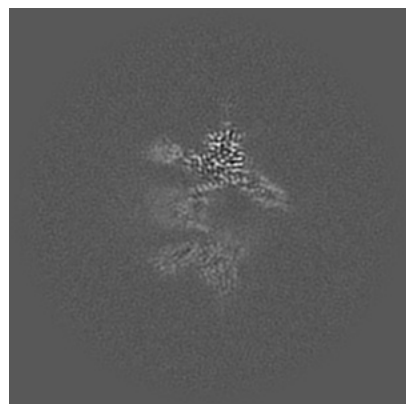


Z

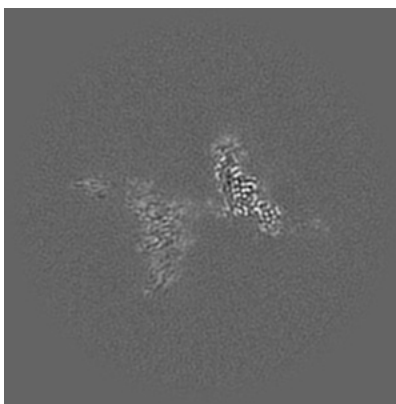
The images above show the map projected in three orthogonal directions.

### 6.2 Central slices [i](#)

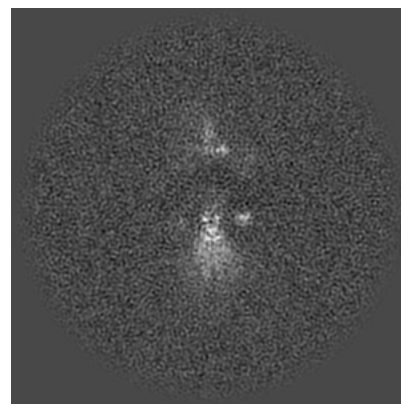
#### 6.2.1 Primary map



X Index: 240



Y Index: 240

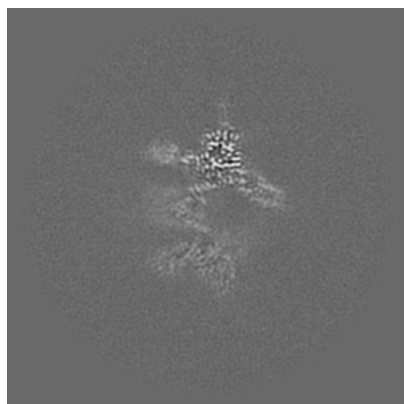


Z Index: 240

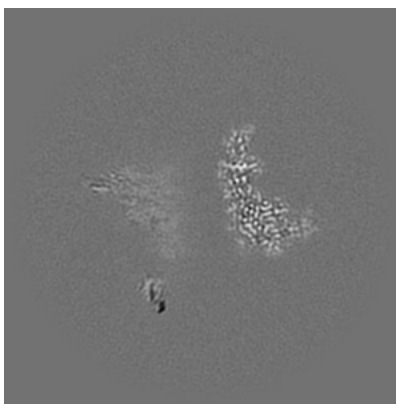
The images above show central slices of the map in three orthogonal directions.

## 6.3 Largest variance slices [i](#)

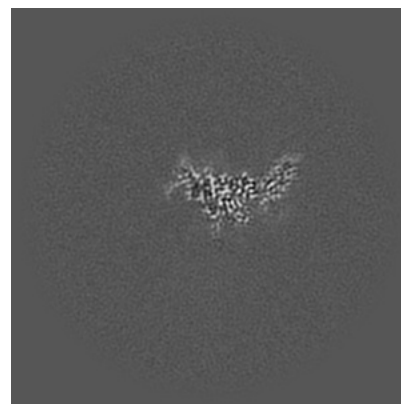
### 6.3.1 Primary map



X Index: 239



Y Index: 267

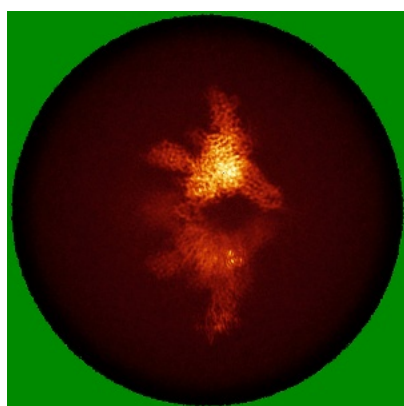


Z Index: 285

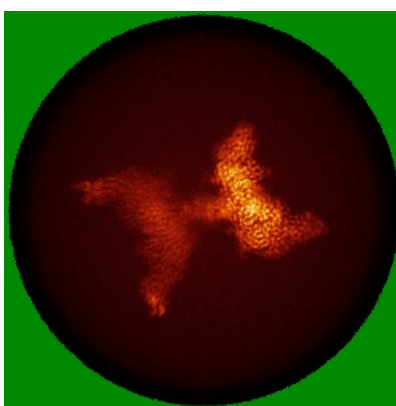
The images above show the largest variance slices of the map in three orthogonal directions.

## 6.4 Orthogonal standard-deviation projections (False-color) [i](#)

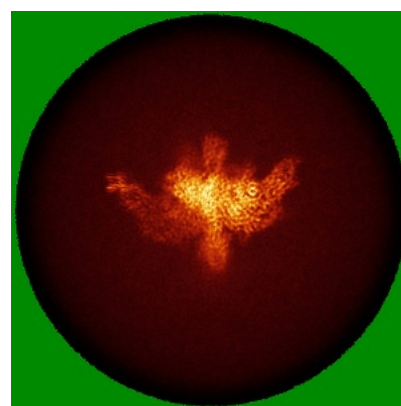
### 6.4.1 Primary map



X



Y

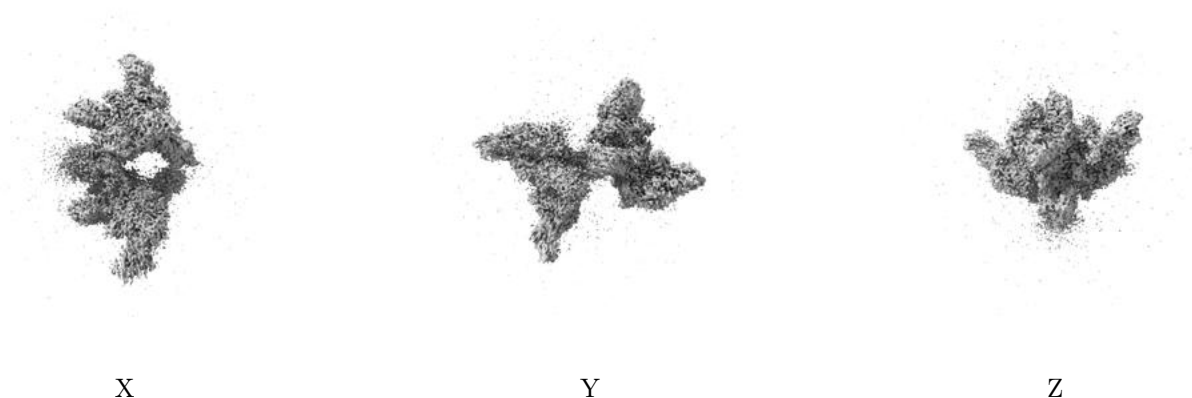


Z

The images above show the map standard deviation projections with false color in three orthogonal directions. Minimum values are shown in green, max in blue, and dark to light orange shades represent small to large values respectively.

## 6.5 Orthogonal surface views [i](#)

### 6.5.1 Primary map



The images above show the 3D surface view of the map at the recommended contour level 3.95. These images, in conjunction with the slice images, may facilitate assessment of whether an appropriate contour level has been provided.

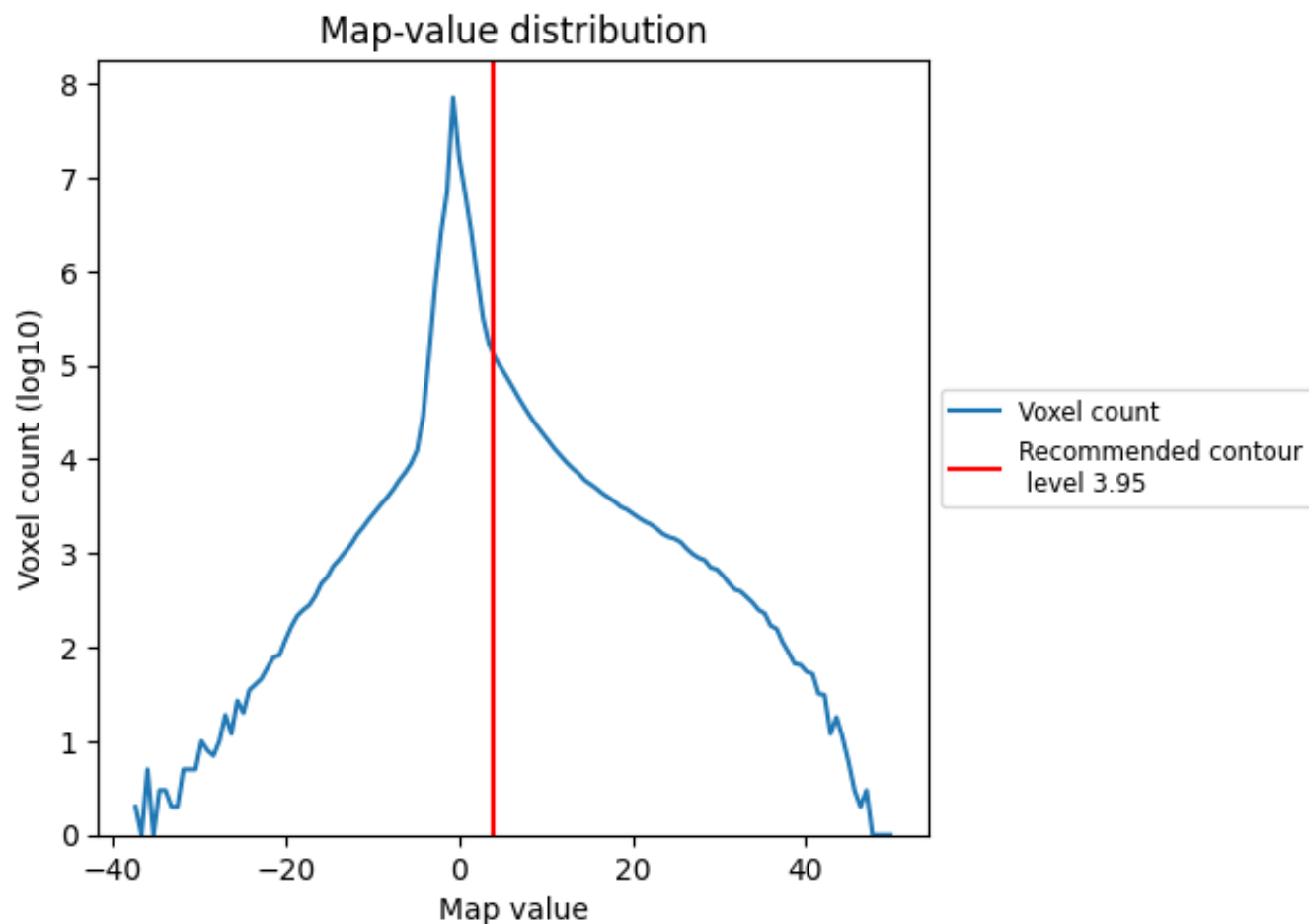
## 6.6 Mask visualisation [i](#)

This section was not generated. No masks/segmentation were deposited.

## 7 Map analysis [i](#)

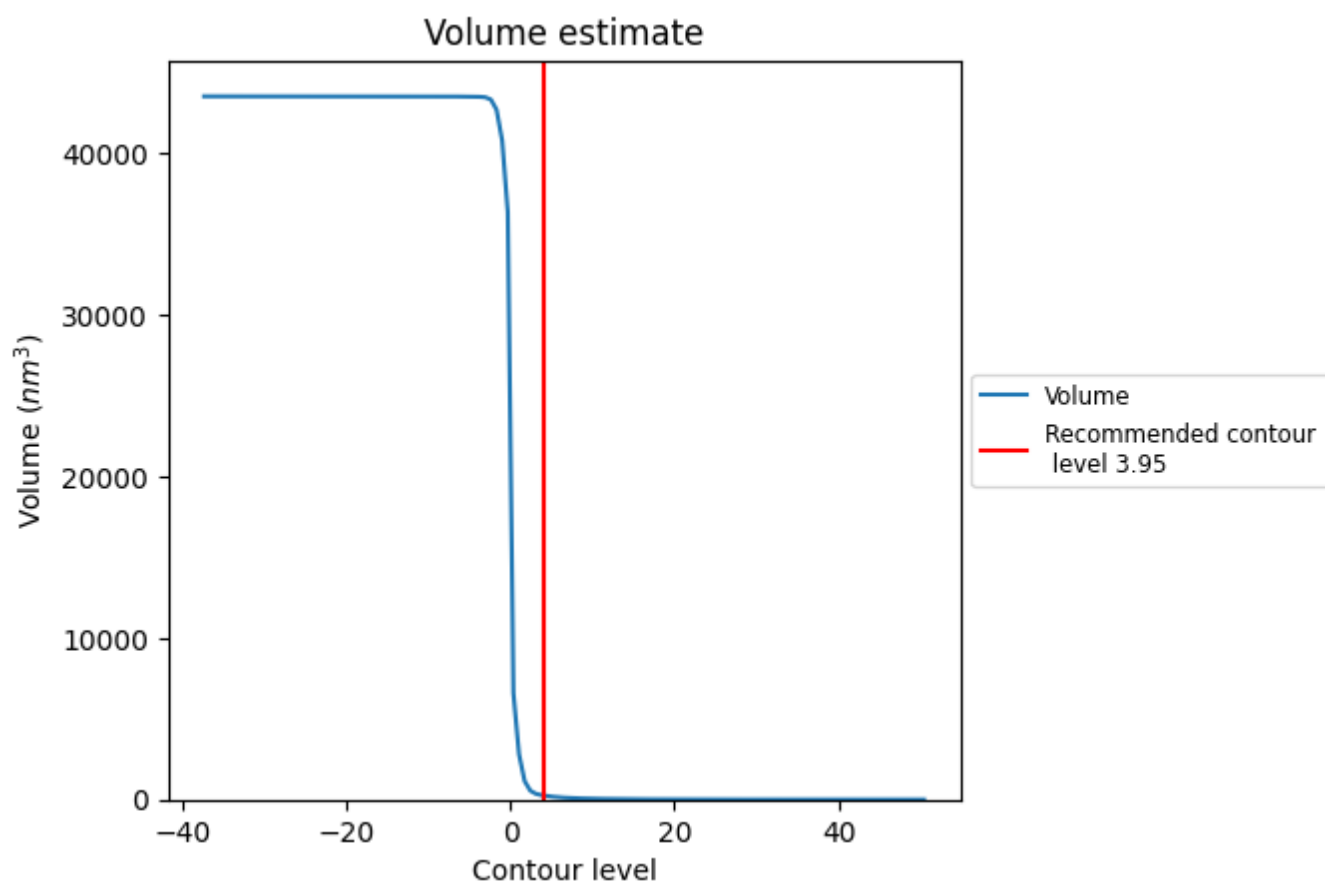
This section contains the results of statistical analysis of the map.

### 7.1 Map-value distribution [i](#)



The map-value distribution is plotted in 128 intervals along the x-axis. The y-axis is logarithmic. A spike in this graph at zero usually indicates that the volume has been masked.

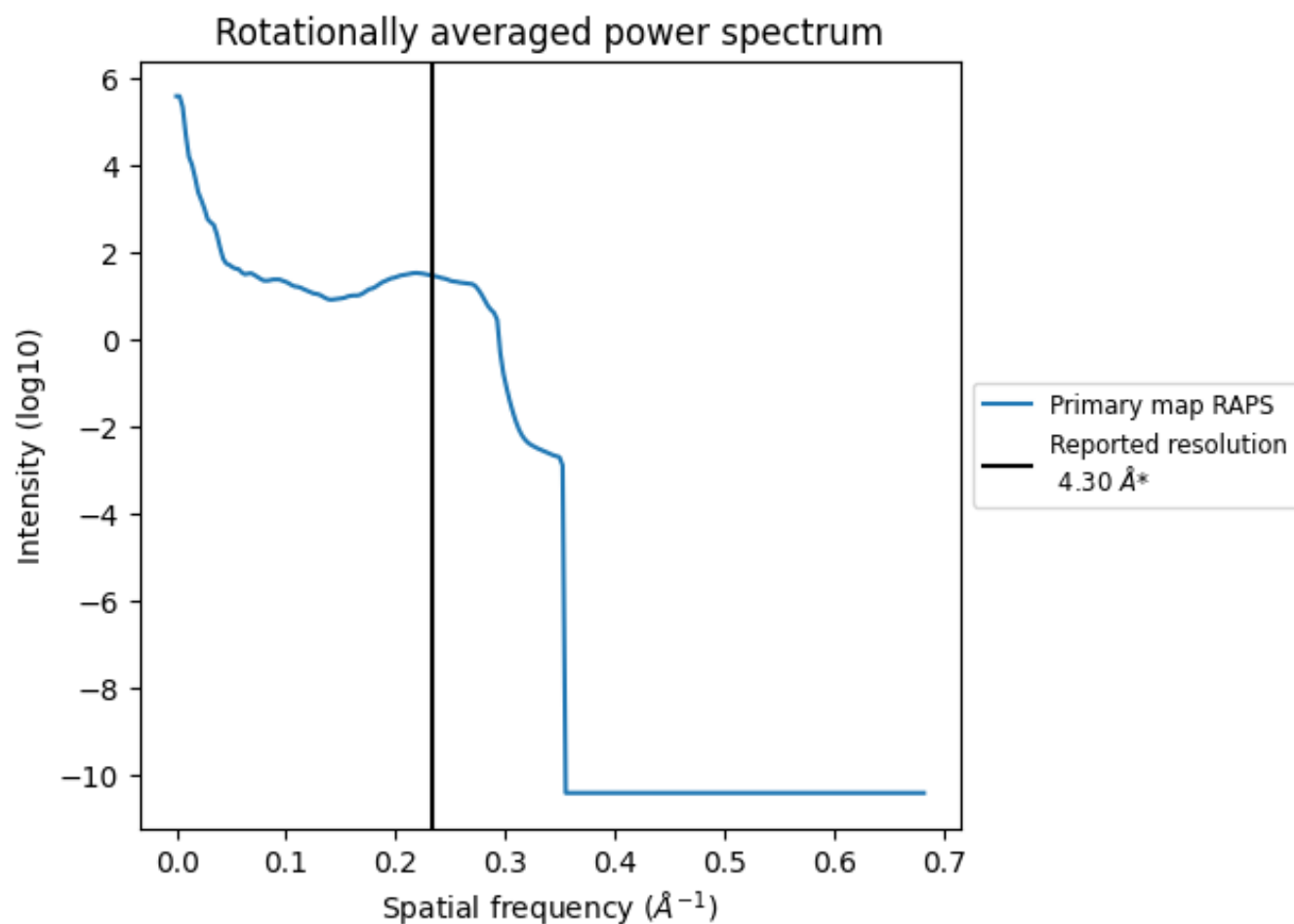
## 7.2 Volume estimate [i](#)



The volume at the recommended contour level is 259 nm<sup>3</sup>; this corresponds to an approximate mass of 234 kDa.

The volume estimate graph shows how the enclosed volume varies with the contour level. The recommended contour level is shown as a vertical line and the intersection between the line and the curve gives the volume of the enclosed surface at the given level.

### 7.3 Rotationally averaged power spectrum ⓘ



\*Reported resolution corresponds to spatial frequency of 0.233  $\text{\AA}^{-1}$



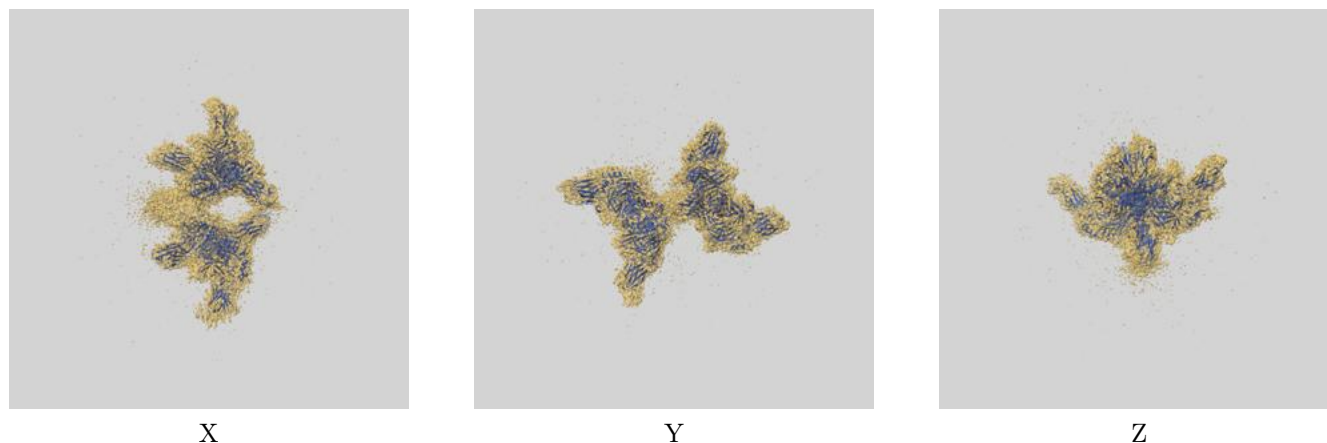
## 8 Fourier-Shell correlation

This section was not generated. No FSC curve or half-maps provided.

## 9 Map-model fit [i](#)

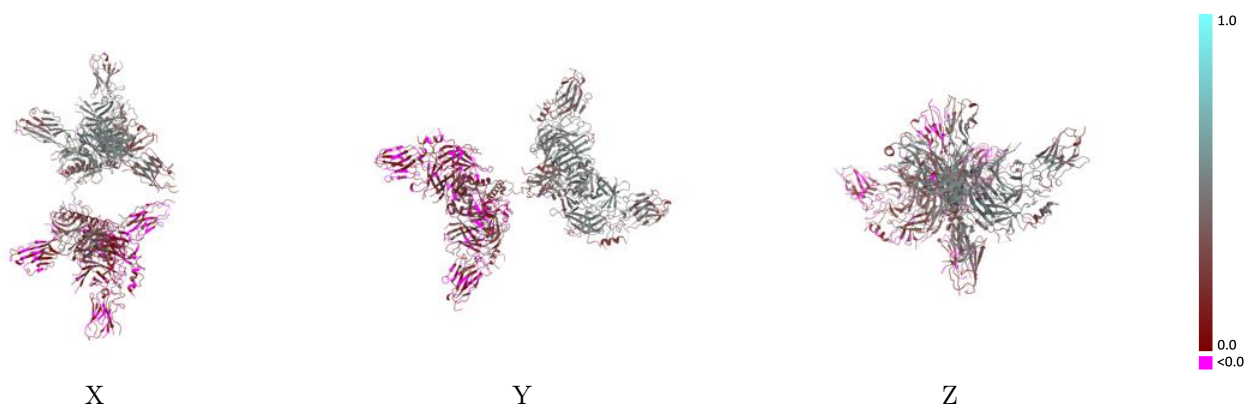
This section contains information regarding the fit between EMDB map EMD-52024 and PDB model 9HBP. Per-residue inclusion information can be found in [section 3](#) on [page 6](#).

### 9.1 Map-model overlay [i](#)



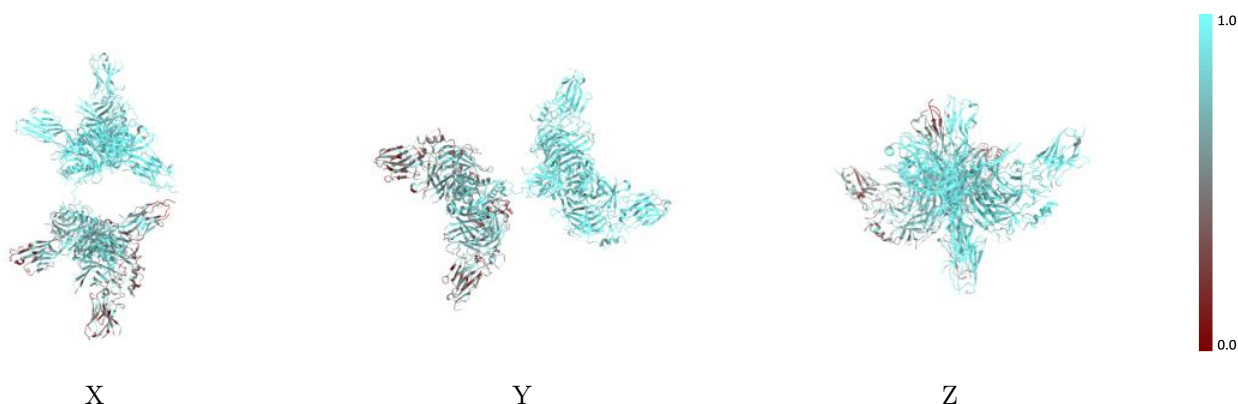
The images above show the 3D surface view of the map at the recommended contour level 3.95 at 50% transparency in yellow overlaid with a ribbon representation of the model coloured in blue. These images allow for the visual assessment of the quality of fit between the atomic model and the map.

## 9.2 Q-score mapped to coordinate model [i](#)



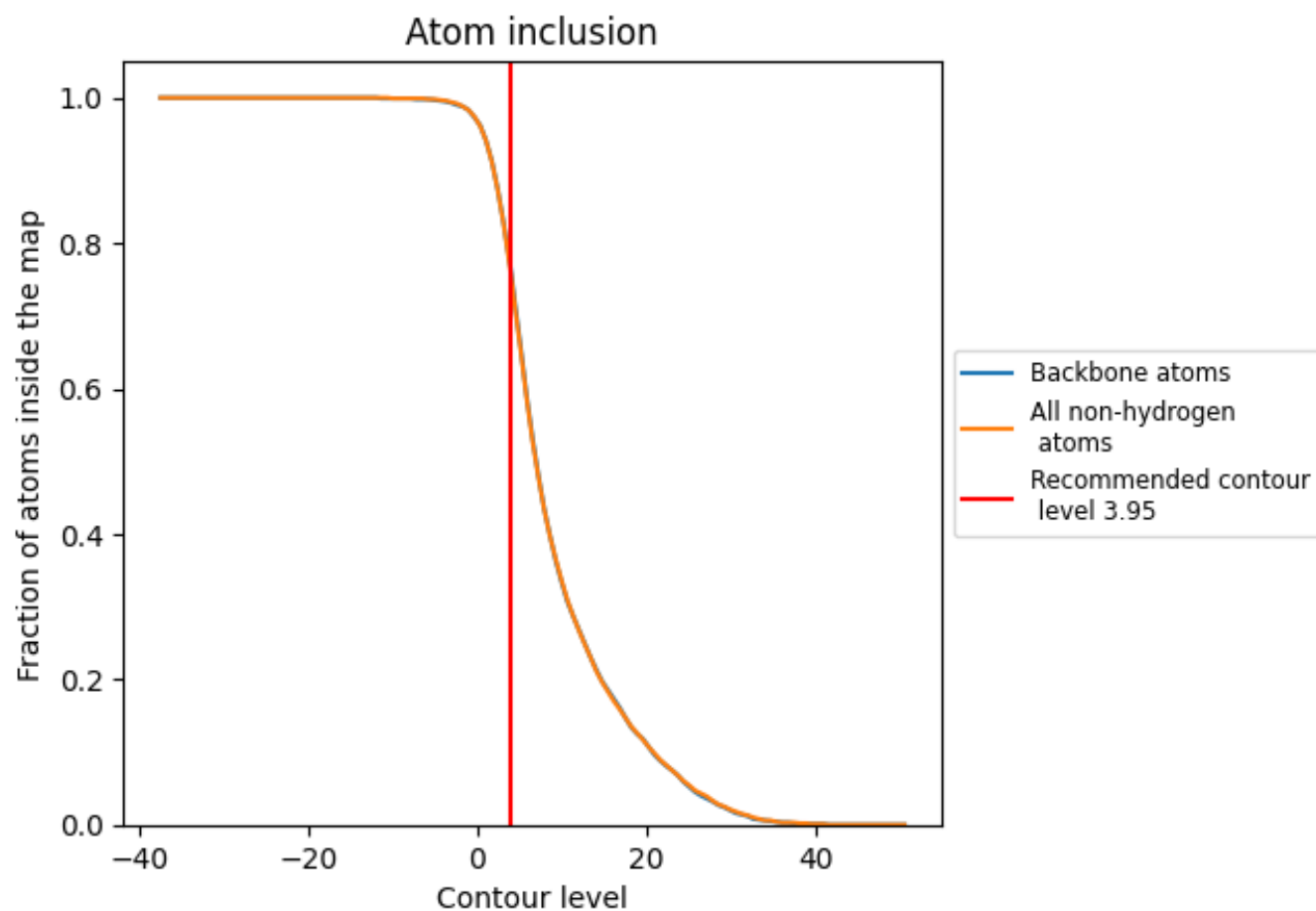
The images above show the model with each residue coloured according its Q-score. This shows their resolvability in the map with higher Q-score values reflecting better resolvability. Please note: Q-score is calculating the resolvability of atoms, and thus high values are only expected at resolutions at which atoms can be resolved. Low Q-score values may therefore be expected for many entries.

## 9.3 Atom inclusion mapped to coordinate model [i](#)



The images above show the model with each residue coloured according to its atom inclusion. This shows to what extent they are inside the map at the recommended contour level (3.95).

## 9.4 Atom inclusion [i](#)



At the recommended contour level, 76% of all backbone atoms, 76% of all non-hydrogen atoms, are inside the map.

9.5 Map-model fit summary ⓘ

The table lists the average atom inclusion at the recommended contour level (3.95) and Q-score for the entire model and for each chain.

Chain	Atom inclusion	Q-score
All	<div></div> 0.7600	<div></div> 0.2860
A	<div></div> 0.9000	<div></div> 0.4540
B	<div></div> 0.8990	<div></div> 0.4640
C	<div></div> 0.7050	<div></div> 0.2160
D	<div></div> 0.6530	<div></div> 0.1410
E	<div></div> 0.8780	<div></div> 0.3790
F	<div></div> 0.8690	<div></div> 0.3730
G	<div></div> 0.9020	<div></div> 0.3620
H	<div></div> 0.8860	<div></div> 0.3650
I	<div></div> 0.4890	<div></div> 0.0890
J	<div></div> 0.4430	<div></div> 0.0580
K	<div></div> 0.5640	<div></div> 0.0530
L	<div></div> 0.5980	<div></div> 0.0980

1.0

0.0

<0.0