



Full wwPDB X-ray Structure Validation Report ⓘ

Mar 20, 2026 – 10:00 AM UTC

PDB ID : 9H33 / pdb_00009h33
Title : T2R-TTL-PROTAC2 complex
Authors : Maiocchi, A.; Abel, A.-C.; Boiarska, Z.; Steinmetz, M.O.; Passarella, D.;
Prota, A.E.
Deposited on : 2024-10-15
Resolution : 2.30 Å(reported)

This is a Full wwPDB X-ray Structure Validation Report for a publicly released PDB entry.

We welcome your comments at validation@mail.wwpdb.org

A user guide is available at

<https://www.wwpdb.org/validation/2017/XrayValidationReportHelp>

with specific help available everywhere you see the ⓘ symbol.

The types of validation reports are described at

<http://www.wwpdb.org/validation/2017/FAQs#types>.

The following versions of software and data (see [references ⓘ](#)) were used in the production of this report:

MolProbity : 4-5-2 with Phenix2.0
Mogul : 2022.3.0, CSD as543be (2022)
Xtriage (Phenix) : 2.0
EDS : 3.0
Buster-report : wwPDB partial adaption of 1.1.7 (2018)
Percentile statistics : 20250101.v01 (using entries in the PDB archive January 1st 2025)
CCP4 : 9.0.010 (Gargrove)
Density-Fitness : 1.0.12
Ideal geometry (proteins) : Engh & Huber (2001)
Ideal geometry (DNA, RNA) : Parkinson et al. (1996)
Validation Pipeline (wwPDB-VP) : 2.49

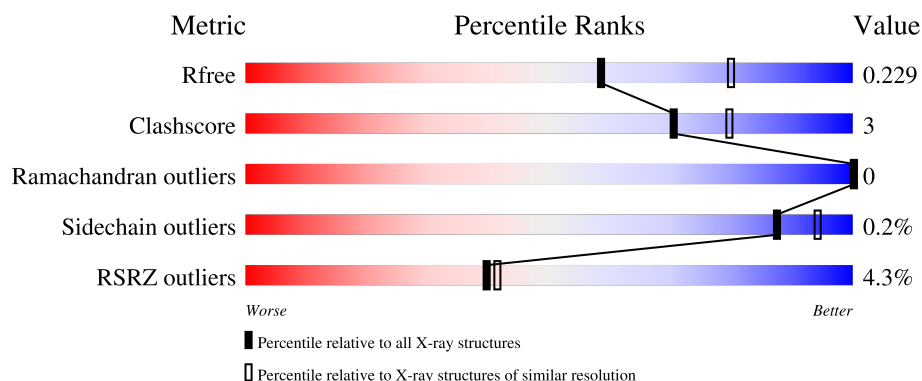
1 Overall quality at a glance

The following experimental techniques were used to determine the structure:

X-RAY DIFFRACTION

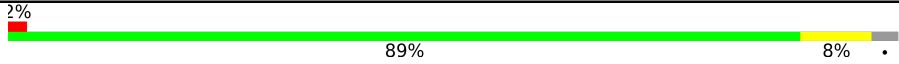
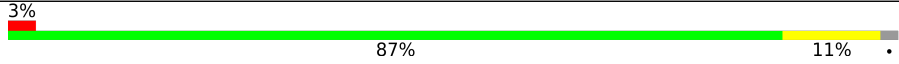



The reported resolution of this entry is 2.30 Å.

Percentile scores (ranging between 0-100) for global validation metrics of the entry are shown in the following graphic. The table shows the number of entries on which the scores are based.



Metric	Whole archive (#Entries)	Similar resolution (#Entries, resolution range(Å))
R_{free}	180053	6319 (2.30-2.30)
Clashscore	190562	6919 (2.30-2.30)
Ramachandran outliers	187476	6854 (2.30-2.30)
Sidechain outliers	187428	6854 (2.30-2.30)
RSRZ outliers	180081	6325 (2.30-2.30)

The table below summarises the geometric issues observed across the polymeric chains and their fit to the electron density. The red, orange, yellow and green segments of the lower bar indicate the fraction of residues that contain outliers for ≥ 3 , 2, 1 and 0 types of geometric quality criteria respectively. A grey segment represents the fraction of residues that are not modelled. The numeric value for each fraction is indicated below the corresponding segment, with a dot representing fractions $\leq 5\%$. The upper red bar (where present) indicates the fraction of residues that have poor fit to the electron density. The numeric value is given above the bar.

Mol	Chain	Length	Quality of chain
1	A	451	
1	C	451	
2	B	445	
2	D	445	
3	E	142	

Continued on next page...

Continued from previous page...

Mol	Chain	Length	Quality of chain
4	F	384	<div><div></div><div>8%</div><div>83%</div><div>7%</div><div>10%</div></div>

2 Entry composition

There are 13 unique types of molecules in this entry. The entry contains 17934 atoms, of which 0 are hydrogens and 0 are deuteriums.

In the tables below, the ZeroOcc column contains the number of atoms modelled with zero occupancy, the AltConf column contains the number of residues with at least one atom in alternate conformation and the Trace column contains the number of residues modelled with at most 2 atoms.

- Molecule 1 is a protein called Tubulin alpha-1B chain.

Mol	Chain	Residues	Atoms					ZeroOcc	AltConf	Trace
1	A	438	Total	C	N	O	S	0	2	0
			3436	2173	584	655	24			
1	C	440	Total	C	N	O	S	0	1	0
			3443	2178	585	657	23			

- Molecule 2 is a protein called Tubulin beta-2B chain.

Mol	Chain	Residues	Atoms					ZeroOcc	AltConf	Trace
2	B	424	Total	C	N	O	S	0	1	0
			3350	2105	573	645	27			
2	D	426	Total	C	N	O	S	0	0	0
			3342	2098	570	647	27			

- Molecule 3 is a protein called Stathmin-4.

Mol	Chain	Residues	Atoms					ZeroOcc	AltConf	Trace
3	E	123	Total	C	N	O	S	0	0	0
			1014	625	183	201	5			

There are 3 discrepancies between the modelled and reference sequences:

Chain	Residue	Modelled	Actual	Comment	Reference
E	3	MET	-	initiating methionine	UNP P63043
E	4	ALA	-	expression tag	UNP P63043
E	?	-	GLY	deletion	UNP P63043

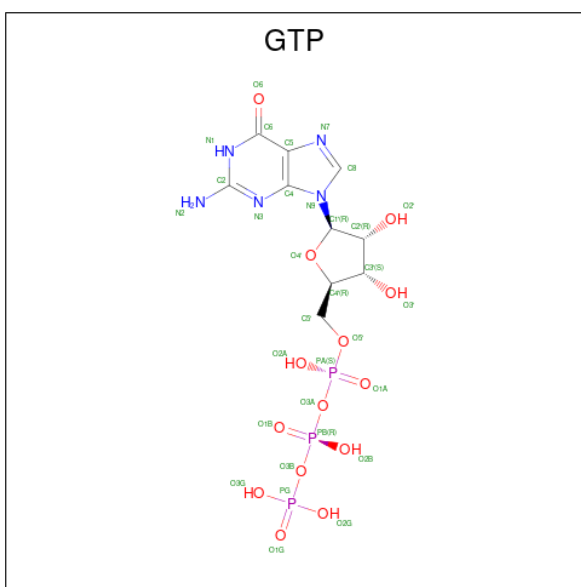
- Molecule 4 is a protein called Tubulin-tyrosine ligase.

Mol	Chain	Residues	Atoms					ZeroOcc	AltConf	Trace
4	F	345	Total	C	N	O	S	0	0	0
			2822	1809	485	514	14			

There are 39 discrepancies between the modelled and reference sequences:

Chain	Residue	Modelled	Actual	Comment	Reference
F	?	-	ALA	deletion	UNP A0A8V0Z8P0
F	?	-	GLU	deletion	UNP A0A8V0Z8P0
F	?	-	MET	deletion	UNP A0A8V0Z8P0
F	?	-	GLN	deletion	UNP A0A8V0Z8P0
F	?	-	GLN	deletion	UNP A0A8V0Z8P0
F	?	-	GLN	deletion	UNP A0A8V0Z8P0
F	?	-	LEU	deletion	UNP A0A8V0Z8P0
F	?	-	LEU	deletion	UNP A0A8V0Z8P0
F	?	-	GLU	deletion	UNP A0A8V0Z8P0
F	?	-	GLY	deletion	UNP A0A8V0Z8P0
F	?	-	ASP	deletion	UNP A0A8V0Z8P0
F	?	-	GLN	deletion	UNP A0A8V0Z8P0
F	?	-	THR	deletion	UNP A0A8V0Z8P0
F	?	-	LEU	deletion	UNP A0A8V0Z8P0
F	?	-	VAL	deletion	UNP A0A8V0Z8P0
F	?	-	LEU	deletion	UNP A0A8V0Z8P0
F	?	-	ALA	deletion	UNP A0A8V0Z8P0
F	?	-	SER	deletion	UNP A0A8V0Z8P0
F	?	-	SER	deletion	UNP A0A8V0Z8P0
F	?	-	THR	deletion	UNP A0A8V0Z8P0
F	?	-	HIS	deletion	UNP A0A8V0Z8P0
F	?	-	PRO	deletion	UNP A0A8V0Z8P0
F	?	-	GLU	deletion	UNP A0A8V0Z8P0
F	?	-	SER	deletion	UNP A0A8V0Z8P0
F	?	-	VAL	deletion	UNP A0A8V0Z8P0
F	?	-	ASP	deletion	UNP A0A8V0Z8P0
F	?	-	SER	deletion	UNP A0A8V0Z8P0
F	?	-	ASP	deletion	UNP A0A8V0Z8P0
F	?	-	LYS	deletion	UNP A0A8V0Z8P0
F	?	-	ASN	deletion	UNP A0A8V0Z8P0
F	?	-	HIS	deletion	UNP A0A8V0Z8P0
F	?	-	GLY	deletion	UNP A0A8V0Z8P0
F	?	-	PHE	deletion	UNP A0A8V0Z8P0
F	379	HIS	-	expression tag	UNP A0A8V0Z8P0
F	380	HIS	-	expression tag	UNP A0A8V0Z8P0
F	381	HIS	-	expression tag	UNP A0A8V0Z8P0
F	382	HIS	-	expression tag	UNP A0A8V0Z8P0
F	383	HIS	-	expression tag	UNP A0A8V0Z8P0
F	384	HIS	-	expression tag	UNP A0A8V0Z8P0

- Molecule 5 is GUANOSINE-5'-TRIPHOSPHATE (CCD ID: GTP) (formula: $C_{10}H_{16}N_5O_{14}P_3$).



Mol	Chain	Residues	Atoms				ZeroOcc	AltConf	
5	A	1	Total 32	C 10	N 5	O 14	P 3	0	0
5	C	1	Total 32	C 10	N 5	O 14	P 3	0	0

- Molecule 6 is MAGNESIUM ION (CCD ID: MG) (formula: Mg).

Mol	Chain	Residues	Atoms	ZeroOcc	AltConf
6	A	1	Total Mg 1 1	0	0
6	B	1	Total Mg 1 1	0	0
6	C	1	Total Mg 1 1	0	0
6	D	1	Total Mg 1 1	0	0
6	F	1	Total Mg 1 1	0	0

- Molecule 7 is CALCIUM ION (CCD ID: CA) (formula: Ca).

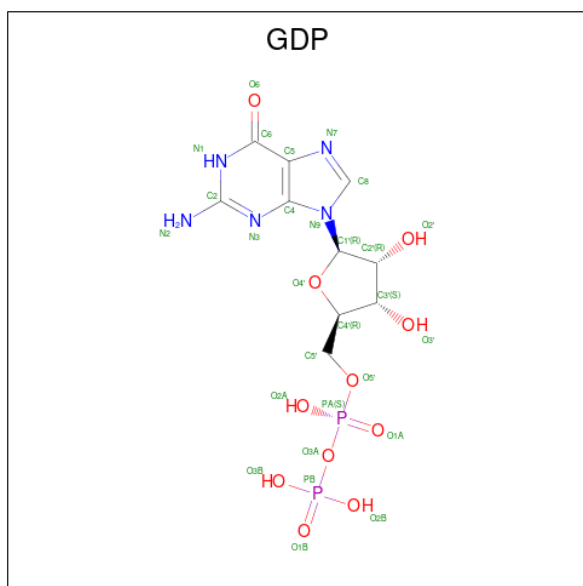
Mol	Chain	Residues	Atoms	ZeroOcc	AltConf
7	A	2	Total Ca 2 2	0	0
7	B	1	Total Ca 1 1	0	0

Continued on next page...

Continued from previous page...

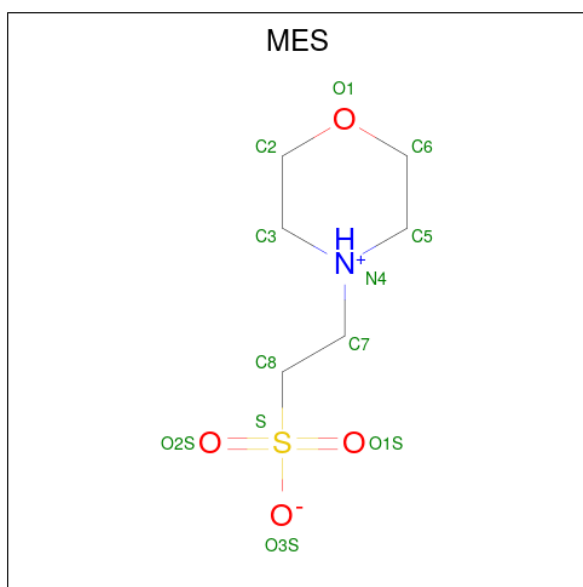
Mol	Chain	Residues	Atoms		ZeroOcc	AltConf
7	C	1	Total	Ca	0	0
			1	1		

- Molecule 8 is GUANOSINE-5'-DIPHOSPHATE (CCD ID: GDP) (formula: $C_{10}H_{15}N_5O_{11}P_2$).



Mol	Chain	Residues	Atoms					ZeroOcc	AltConf
8	B	1	Total	C	N	O	P	0	0
			28	10	5	11	2		
8	D	1	Total	C	N	O	P	0	0
			28	10	5	11	2		

- Molecule 9 is 2-(N-MORPHOLINO)-ETHANESULFONIC ACID (CCD ID: MES) (formula: $C_6H_{13}NO_4S$).



Mol	Chain	Residues	Atoms					ZeroOcc	AltConf
9	B	1	Total	C	N	O	S	0	0
			12	6	1	4	1		

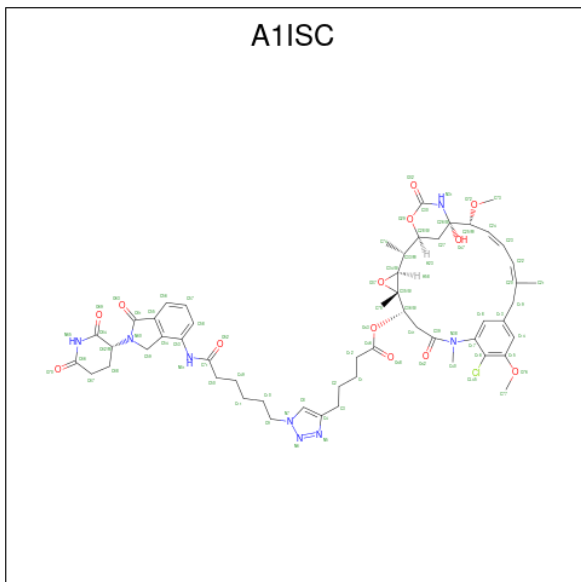
- Molecule 10 is GLYCEROL (CCD ID: GOL) (formula: $C_3H_8O_3$).



Mol	Chain	Residues	Atoms			ZeroOcc	AltConf
10	B	1	Total	C	O	0	0
			6	3	3		

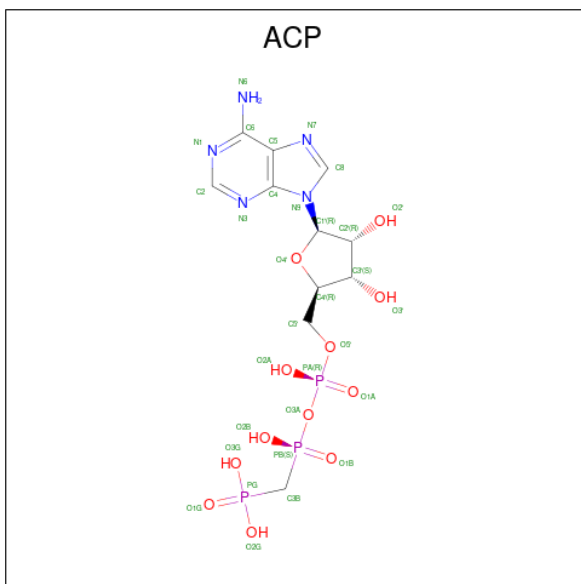
- Molecule 11 is (1S,2R,3S,5S,6S,16E,18E,20R,21S)-11-chloro-21-hydroxy-12,20-dimethoxy-2,5,9,16-tetramethyl-8,23-dioxo-4,24-dioxa-9,22-diazatetracyclo[19.3.1.1 10,14 .0 3,5]hexaco-sa-10(26),11,13,16,18-pentaen-6-yl 5-{1-[6-({(4R)-2-[(3R)-2,6-dioxopiperidin-3-yl]-1-oxo-2,

4-dihydro-1H-isoindol-4-yl}amino)-6-oxohexyl]-1H-1,2,3-triazol-4-yl}pentanoate (CCD ID: A1ISC) (formula: $C_{54}H_{67}ClN_8O_{13}$) (labeled as "Ligand of Interest" by depositor).



Mol	Chain	Residues	Atoms					ZeroOcc	AltConf
11	D	1	Total	C	Cl	N	O	0	0
			76	54	1	8	13		

- Molecule 12 is PHOSPHOMETHYLPHOSPHONIC ACID ADENYLATE ESTER (CCD ID: ACP) (formula: $C_{11}H_{18}N_5O_{12}P_3$).



Mol	Chain	Residues	Atoms					ZeroOcc	AltConf
12	F	1	Total	C	N	O	P	0	0
			31	11	5	12	3		

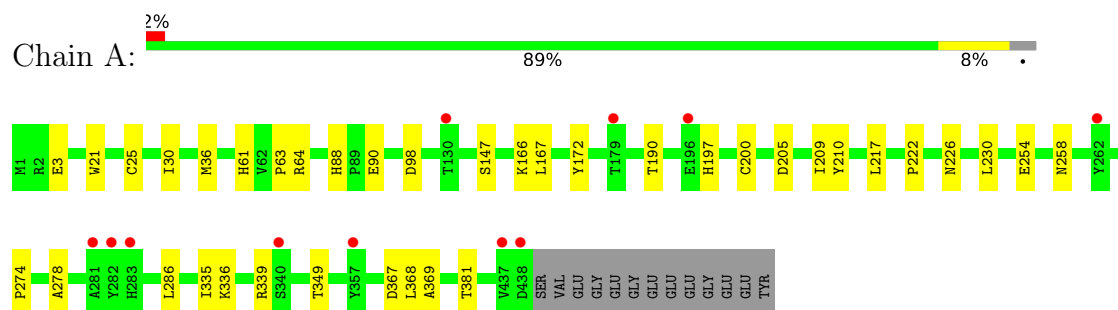
- Molecule 13 is water.

Mol	Chain	Residues	Atoms		ZeroOcc	AltConf
13	A	46	Total 46	O 46	0	0
13	B	60	Total 60	O 60	0	0
13	C	122	Total 122	O 122	0	0
13	D	21	Total 21	O 21	0	0
13	E	5	Total 5	O 5	0	0
13	F	19	Total 19	O 19	0	0

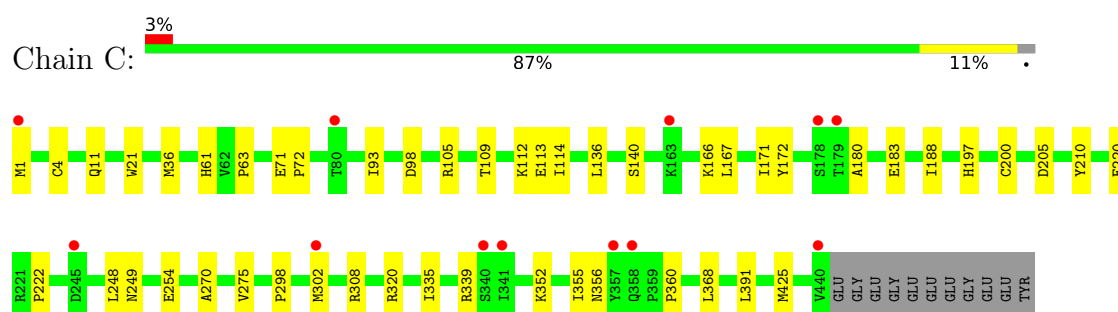
3 Residue-property plots

These plots are drawn for all protein, RNA, DNA and oligosaccharide chains in the entry. The first graphic for a chain summarises the proportions of the various outlier classes displayed in the second graphic. The second graphic shows the sequence view annotated by issues in geometry and electron density. Residues are color-coded according to the number of geometric quality criteria for which they contain at least one outlier: green = 0, yellow = 1, orange = 2 and red = 3 or more. A red dot above a residue indicates a poor fit to the electron density ($RSRZ > 2$). Stretches of 2 or more consecutive residues without any outlier are shown as a green connector. Residues present in the sample, but not in the model, are shown in grey.

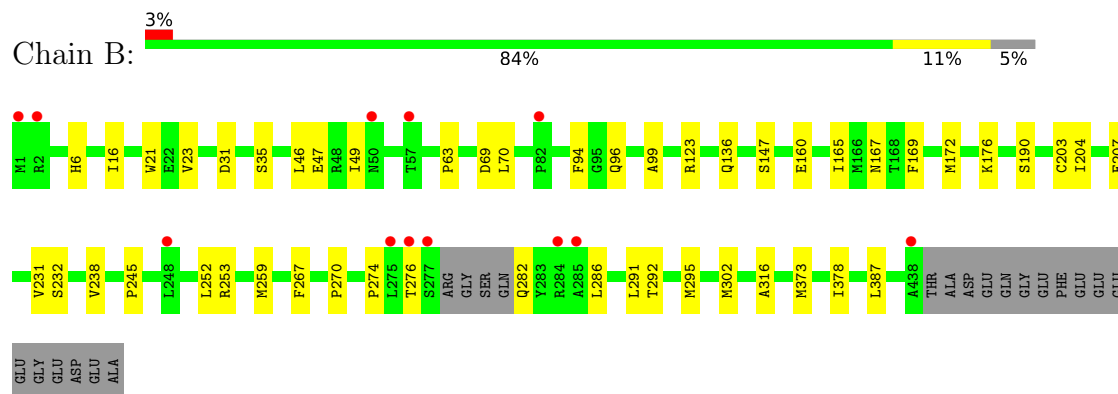
- Molecule 1: Tubulin alpha-1B chain



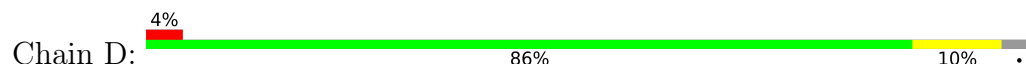
- Molecule 1: Tubulin alpha-1B chain

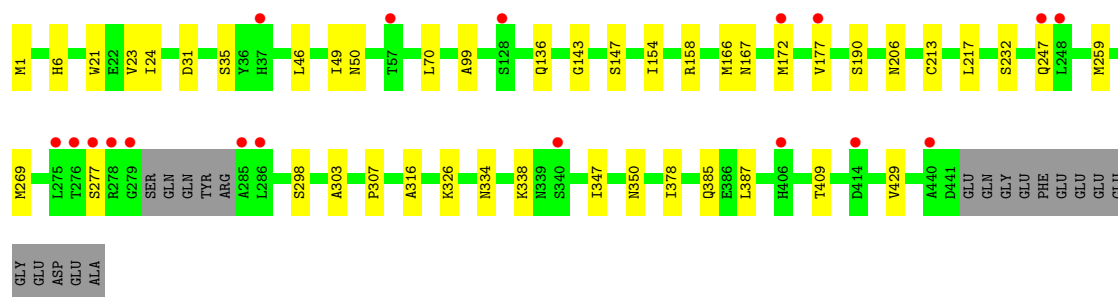


- Molecule 2: Tubulin beta-2B chain

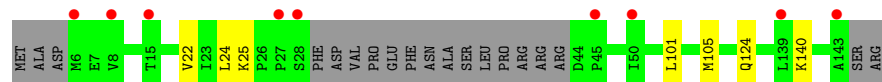
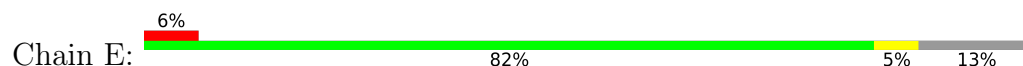


- Molecule 2: Tubulin beta-2B chain

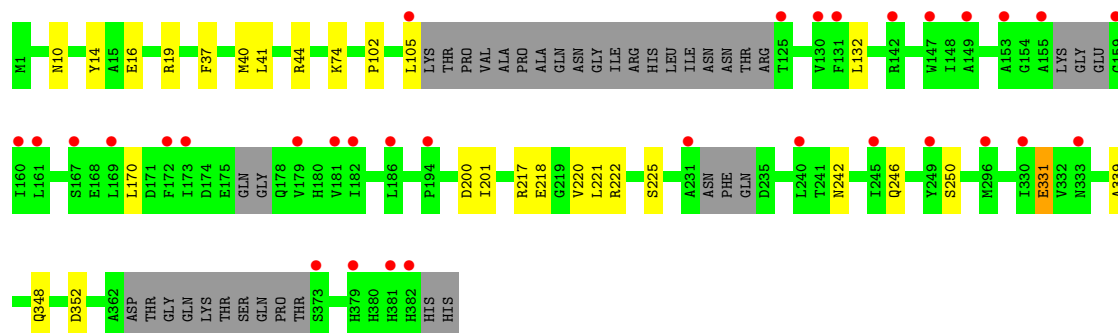
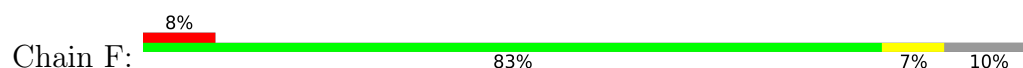




• Molecule 3: Stathmin-4



• Molecule 4: Tubulin-tyrosine ligase



4 Data and refinement statistics

Property	Value	Source
Space group	P 21 21 21	Depositor
Cell constants a, b, c, α , β , γ	104.96Å 156.66Å 180.95Å 90.00° 90.00° 90.00°	Depositor
Resolution (Å)	49.61 – 2.30 49.61 – 2.30	Depositor EDS
% Data completeness (in resolution range)	100.0 (49.61-2.30) 100.0 (49.61-2.30)	Depositor EDS
R_{merge}	0.14	Depositor
R_{sym}	(Not available)	Depositor
$\langle I/\sigma(I) \rangle$ ¹	1.21 (at 2.29Å)	Xtriage
Refinement program	PHENIX 1.21.2_5419	Depositor
R, R_{free}	0.199 , 0.228 0.199 , 0.229	Depositor DCC
R_{free} test set	6634 reflections (5.00%)	wwPDB-VP
Wilson B-factor (Å ²)	59.2	Xtriage
Anisotropy	0.231	Xtriage
Bulk solvent k_{sol} (e/Å ³), B_{sol} (Å ²)	0.32 , 41.1	EDS
L-test for twinning ²	$\langle L \rangle = 0.51$, $\langle L^2 \rangle = 0.34$	Xtriage
Estimated twinning fraction	No twinning to report.	Xtriage
F_o, F_c correlation	0.96	EDS
Total number of atoms	17934	wwPDB-VP
Average B, all atoms (Å ²)	76.0	wwPDB-VP

Xtriage's analysis on translational NCS is as follows: *The largest off-origin peak in the Patterson function is 2.55% of the height of the origin peak. No significant pseudotranslation is detected.*

¹Intensities estimated from amplitudes.

²Theoretical values of $\langle |L| \rangle$, $\langle L^2 \rangle$ for acentric reflections are 0.5, 0.333 respectively for untwinned datasets, and 0.375, 0.2 for perfectly twinned datasets.

5 Model quality [i](#)

5.1 Standard geometry [i](#)

Bond lengths and bond angles in the following residue types are not validated in this section: GTP, ACP, GOL, CA, GDP, A1ISC, MES, MG

The Z score for a bond length (or angle) is the number of standard deviations the observed value is removed from the expected value. A bond length (or angle) with $|Z| > 5$ is considered an outlier worth inspection. RMSZ is the root-mean-square of all Z scores of the bond lengths (or angles).

Mol	Chain	Bond lengths		Bond angles	
		RMSZ	# Z >5	RMSZ	# Z >5
1	A	0.08	0/3514	0.25	0/4770
1	C	0.09	0/3521	0.27	0/4780
2	B	0.08	0/3424	0.24	0/4636
2	D	0.07	0/3415	0.22	0/4625
3	E	0.06	0/1022	0.16	0/1356
4	F	0.06	0/2885	0.22	0/3895
All	All	0.08	0/17781	0.24	0/24062

There are no bond length outliers.

There are no bond angle outliers.

There are no chirality outliers.

There are no planarity outliers.

5.2 Too-close contacts [i](#)

In the following table, the Non-H and H(model) columns list the number of non-hydrogen atoms and hydrogen atoms in the chain respectively. The H(added) column lists the number of hydrogen atoms added and optimized by MolProbity. The Clashes column lists the number of clashes within the asymmetric unit, whereas Symm-Clashes lists symmetry-related clashes.

Mol	Chain	Non-H	H(model)	H(added)	Clashes	Symm-Clashes
1	A	3436	0	3343	20	0
1	C	3443	0	3352	29	0
2	B	3350	0	3232	28	0
2	D	3342	0	3222	27	0
3	E	1014	0	1029	4	0
4	F	2822	0	2788	16	0
5	A	32	0	12	1	0

Continued on next page...

Continued from previous page...

Mol	Chain	Non-H	H(model)	H(added)	Clashes	Symm-Clashes
5	C	32	0	12	0	0
6	A	1	0	0	0	0
6	B	1	0	0	0	0
6	C	1	0	0	0	0
6	D	1	0	0	0	0
6	F	1	0	0	0	0
7	A	2	0	0	0	0
7	B	1	0	0	0	0
7	C	1	0	0	0	0
8	B	28	0	12	0	0
8	D	28	0	12	1	0
9	B	12	0	13	2	0
10	B	6	0	8	0	0
11	D	76	0	0	0	0
12	F	31	0	14	1	0
13	A	46	0	0	0	0
13	B	60	0	0	0	0
13	C	122	0	0	0	0
13	D	21	0	0	1	0
13	E	5	0	0	0	0
13	F	19	0	0	0	0
All	All	17934	0	17049	118	0

The all-atom clashscore is defined as the number of clashes found per 1000 atoms (including hydrogen atoms). The all-atom clashscore for this structure is 3.

All (118) close contacts within the same asymmetric unit are listed below, sorted by their clash magnitude.

Atom-1	Atom-2	Interatomic distance (Å)	Clash overlap (Å)
2:B:47:GLU:HG2	2:B:245:PRO:HG3	1.77	0.67
2:D:269:MET:HG3	2:D:303:ALA:HB3	1.80	0.65
4:F:102:PRO:HG2	4:F:105:LEU:HD13	1.79	0.64
2:D:217:LEU:HA	2:D:277:SER:HB3	1.80	0.64
2:D:1:MET:HE2	2:D:50:ASN:HB2	1.81	0.63
2:B:270:PRO:HG2	2:B:302:MET:HB2	1.82	0.61
2:B:96:GLN:HB3	1:C:1:MET:HE2	1.82	0.60
2:B:274:PRO:HB3	2:B:286:LEU:HD22	1.84	0.58
1:A:172:TYR:HB3	1:A:205:ASP:HA	1.87	0.57
4:F:16:GLU:OE2	4:F:19:ARG:NH2	2.34	0.57
2:D:177:VAL:HG21	2:D:206:ASN:HB3	1.87	0.57
1:A:209:ILE:HG23	1:A:230:LEU:HD23	1.87	0.56

Continued on next page...

Continued from previous page...

Atom-1	Atom-2	Interatomic distance (Å)	Clash overlap (Å)
2:D:385:GLN:HB2	2:D:429:VAL:HG13	1.87	0.56
2:B:6:HIS:CD2	2:B:21:TRP:HE1	2.24	0.56
1:C:167:LEU:HG	1:C:200:CYS:HB3	1.87	0.56
2:B:176:LYS:HD2	2:B:207:GLU:HG3	1.88	0.56
2:B:16:ILE:HD13	2:B:231:VAL:HG11	1.88	0.55
1:C:270:ALA:HB3	1:C:302:MET:HE2	1.89	0.55
2:D:409:THR:O	3:E:140:LYS:NZ	2.39	0.55
4:F:348:GLN:NE2	4:F:352:ASP:OD1	2.40	0.55
4:F:10:ASN:HB2	4:F:44:ARG:HH22	1.72	0.54
2:D:172:MET:HG3	2:D:387:LEU:HD11	1.88	0.54
2:B:31:ASP:OD1	2:B:35:SER:N	2.38	0.54
1:C:172:TYR:HB3	1:C:205:ASP:HA	1.89	0.54
2:D:6:HIS:CD2	2:D:21:TRP:HE1	2.27	0.53
4:F:225:SER:HG	4:F:250:SER:HG	1.57	0.53
2:B:147:SER:HG	2:B:190:SER:HG	1.53	0.53
1:A:335:ILE:HG23	1:A:339:ARG:HG3	1.90	0.53
2:B:253[A]:ARG:NH1	9:B:504:MES:O1S	2.32	0.53
1:A:88:HIS:HD2	1:A:90:GLU:HB2	1.73	0.52
4:F:14:TYR:HB3	4:F:41:LEU:HD13	1.89	0.52
4:F:217:ARG:HG3	4:F:218:GLU:HG2	1.92	0.52
2:B:172:MET:HG3	2:B:387:LEU:HD11	1.92	0.52
2:D:213:CYS:HA	2:D:217:LEU:HB2	1.91	0.51
1:A:226:ASN:ND2	1:A:367:ASP:OD2	2.42	0.51
1:C:4[A]:CYS:SG	1:C:136:LEU:HG	2.50	0.51
1:C:112:LYS:NZ	1:C:113:GLU:OE2	2.42	0.51
2:B:23:VAL:HG21	2:B:232:SER:HB3	1.93	0.51
2:D:316:ALA:HB3	2:D:378:ILE:HB	1.92	0.51
2:B:276:THR:HG21	2:B:282:GLN:HA	1.92	0.51
1:C:71:GLU:HG2	1:C:72:PRO:HD2	1.93	0.50
1:C:254:GLU:HG2	1:C:352:LYS:HE2	1.94	0.50
2:B:203:CYS:SG	2:B:267:PHE:HB3	2.52	0.50
1:C:335:ILE:HG23	1:C:339:ARG:HG3	1.92	0.50
2:D:46:LEU:HA	2:D:49:ILE:HB	1.94	0.50
1:C:210:TYR:CZ	1:C:222:PRO:HD2	2.48	0.49
2:B:291:LEU:HD11	2:B:373:MET:HB3	1.95	0.48
4:F:242:ASN:HD21	12:F:401:ACP:H5'2	1.77	0.48
1:A:349:THR:HB	3:E:25:LYS:HB3	1.95	0.48
2:B:316:ALA:HB3	2:B:378:ILE:HB	1.96	0.48
2:D:158:ARG:NH2	13:D:602:HOH:O	2.45	0.47
2:D:31:ASP:OD1	2:D:35:SER:N	2.47	0.47
2:D:334:ASN:HD21	2:D:338:LYS:HE3	1.79	0.47

Continued on next page...

Continued from previous page...

Atom-1	Atom-2	Interatomic distance (Å)	Clash overlap (Å)
1:C:275:VAL:HG13	1:C:368:LEU:HD21	1.95	0.47
1:A:336:LYS:HG3	3:E:24:LEU:HD13	1.97	0.46
1:C:11:GLN:OE1	2:D:247:GLN:NE2	2.48	0.46
1:C:172:TYR:CE2	1:C:391:LEU:HD22	2.51	0.46
2:D:143:GLY:O	2:D:147:SER:OG	2.31	0.46
4:F:220:VAL:HG11	4:F:339:ALA:HB2	1.98	0.46
1:A:210:TYR:CZ	1:A:222:PRO:HD2	2.51	0.46
1:C:71:GLU:HB2	1:C:98:ASP:HB3	1.97	0.46
1:A:217:LEU:HD21	1:A:368:LEU:HD23	1.98	0.46
2:B:204:ILE:HD13	2:B:231:VAL:HG13	1.98	0.46
1:C:320:ARG:HG3	1:C:360:PRO:HG3	1.98	0.46
1:C:93:ILE:HG22	1:C:114:ILE:HD11	1.98	0.46
1:A:167:LEU:HG	1:A:200:CYS:HB3	1.98	0.45
1:A:274:PRO:HB3	1:A:286:LEU:HD12	1.98	0.45
2:D:136:GLN:HA	2:D:167:ASN:O	2.16	0.45
1:A:36:MET:HB3	1:A:61:HIS:CE1	2.51	0.45
2:B:46:LEU:HA	2:B:49:ILE:HB	1.98	0.45
1:C:298:PRO:HG2	1:C:308:ARG:NH2	2.32	0.45
1:C:166:LYS:HE2	1:C:197:HIS:O	2.16	0.45
2:B:253[A]:ARG:NH1	9:B:504:MES:S	2.90	0.45
2:B:165:ILE:HG21	2:B:252:LEU:HB3	1.98	0.45
2:D:259:MET:HE2	2:D:378:ILE:HG22	1.99	0.45
2:B:136:GLN:HA	2:B:167:ASN:O	2.16	0.44
2:D:143:GLY:HA3	8:D:501:GDP:O3A	2.18	0.44
1:A:254:GLU:HG2	1:A:258:ASN:ND2	2.33	0.43
2:D:23:VAL:HG21	2:D:232:SER:HB2	2.00	0.43
1:A:278:ALA:HA	1:A:369:ALA:HB2	2.00	0.43
1:C:220:GLU:HB3	2:D:326:LYS:HD2	2.01	0.43
1:A:166:LYS:HE2	1:A:197:HIS:O	2.18	0.43
1:C:320:ARG:HA	1:C:356:ASN:O	2.19	0.43
3:E:101:LEU:O	3:E:105:MET:HG2	2.19	0.43
1:A:98:ASP:HB2	5:A:501:GTP:O2G	2.19	0.42
4:F:201:ILE:HG12	4:F:221:LEU:HG	2.00	0.42
2:B:259:MET:HE2	2:B:378:ILE:HG22	2.01	0.42
2:B:123:ARG:NE	2:B:160:GLU:OE2	2.49	0.42
1:C:140:SER:HA	1:C:171:ILE:HB	2.02	0.42
4:F:200:ASP:OD1	4:F:222:ARG:HB2	2.19	0.42
4:F:225:SER:OG	4:F:250:SER:OG	2.30	0.42
2:B:21:TRP:CZ3	2:B:63:PRO:HB3	2.54	0.42
1:C:21:TRP:CZ3	1:C:63:PRO:HB3	2.55	0.42
2:D:147:SER:HB2	2:D:190:SER:OG	2.20	0.42

Continued on next page...

Continued from previous page...

Atom-1	Atom-2	Interatomic distance (Å)	Clash overlap (Å)
1:A:3:GLU:HG2	1:A:64:ARG:CZ	2.49	0.42
1:A:21:TRP:CZ3	1:A:63:PRO:HB3	2.54	0.42
1:A:147:SER:HB2	1:A:190:THR:HB	2.01	0.42
1:C:248:LEU:HD13	1:C:355:ILE:HD12	2.02	0.41
1:C:391:LEU:HD12	1:C:391:LEU:HA	1.94	0.41
2:D:70:LEU:HD12	2:D:99:ALA:HB2	2.02	0.41
2:D:154:ILE:HG23	2:D:166:MET:HG2	2.02	0.41
2:D:298:SER:HB3	2:D:307:PRO:HD2	2.02	0.41
4:F:132:LEU:HD21	4:F:170:LEU:HD11	2.02	0.41
2:D:347:ILE:HG22	2:D:350:ASN:HB3	2.03	0.41
1:C:180:ALA:O	1:C:183:GLU:HG3	2.19	0.41
1:C:188:ILE:HG13	1:C:425:MET:HG3	2.02	0.41
2:B:70:LEU:HD12	2:B:99:ALA:HB2	2.02	0.41
1:C:36:MET:HB3	1:C:61:HIS:CE1	2.55	0.41
2:B:169:PHE:HE2	2:B:238:VAL:HG21	1.85	0.41
2:B:292:THR:HA	2:B:295:MET:HE2	2.02	0.41
1:A:25:CYS:HB3	1:A:30:ILE:O	2.21	0.41
4:F:37:PHE:CZ	4:F:40:MET:HE3	2.56	0.41
4:F:74:LYS:NZ	4:F:331:GLU:OE1	2.48	0.41
1:C:105:ARG:HA	1:C:109:THR:HB	2.03	0.41
4:F:246:GLN:O	4:F:250:SER:HB3	2.22	0.40
2:B:69:ASP:O	2:B:94:PHE:HA	2.22	0.40
2:D:21:TRP:CE3	2:D:24:ILE:HD11	2.57	0.40
1:C:249:ASN:OD1	1:C:356:ASN:ND2	2.51	0.40

There are no symmetry-related clashes.

5.3 Torsion angles [i](#)

5.3.1 Protein backbone [i](#)

In the following table, the Percentiles column shows the percent Ramachandran outliers of the chain as a percentile score with respect to all X-ray entries followed by that with respect to entries of similar resolution.

The Analysed column shows the number of residues for which the backbone conformation was analysed, and the total number of residues.

Mol	Chain	Analysed	Favoured	Allowed	Outliers	Percentiles
1	A	438/451 (97%)	435 (99%)	3 (1%)	0	100 100

Continued on next page...

Continued from previous page...

Mol	Chain	Analysed	Favoured	Allowed	Outliers	Percentiles	
1	C	439/451 (97%)	433 (99%)	6 (1%)	0	100	100
2	B	421/445 (95%)	417 (99%)	4 (1%)	0	100	100
2	D	422/445 (95%)	418 (99%)	4 (1%)	0	100	100
3	E	119/142 (84%)	119 (100%)	0	0	100	100
4	F	333/384 (87%)	329 (99%)	4 (1%)	0	100	100
All	All	2172/2318 (94%)	2151 (99%)	21 (1%)	0	100	100

There are no Ramachandran outliers to report.

5.3.2 Protein sidechains ⓘ

In the following table, the Percentiles column shows the percent sidechain outliers of the chain as a percentile score with respect to all X-ray entries followed by that with respect to entries of similar resolution.

The Analysed column shows the number of residues for which the sidechain conformation was analysed, and the total number of residues.

Mol	Chain	Analysed	Rotameric	Outliers	Percentiles	
1	A	371/379 (98%)	370 (100%)	1 (0%)	86	93
1	C	372/379 (98%)	372 (100%)	0	100	100
2	B	368/383 (96%)	368 (100%)	0	100	100
2	D	367/383 (96%)	367 (100%)	0	100	100
3	E	110/127 (87%)	108 (98%)	2 (2%)	51	70
4	F	309/342 (90%)	308 (100%)	1 (0%)	86	93
All	All	1897/1993 (95%)	1893 (100%)	4 (0%)	87	94

All (4) residues with a non-rotameric sidechain are listed below:

Mol	Chain	Res	Type
1	A	381	THR
3	E	22	VAL
3	E	124	GLN
4	F	331	GLU

Sometimes sidechains can be flipped to improve hydrogen bonding and reduce clashes. All (19) such sidechains are listed below:

Mol	Chain	Res	Type
1	A	85	GLN
1	A	216	ASN
2	B	8	GLN
2	B	14	ASN
2	B	37	HIS
2	B	136	GLN
2	B	331	GLN
2	B	349	ASN
1	C	11	GLN
2	D	37	HIS
2	D	247	GLN
2	D	339	ASN
2	D	349	ASN
3	E	12	ASN
3	E	18	GLN
3	E	136	ASN
4	F	180	HIS
4	F	269	GLN
4	F	333	ASN

5.3.3 RNA [i](#)

There are no RNA molecules in this entry.

5.4 Non-standard residues in protein, DNA, RNA chains [i](#)

There are no non-standard protein/DNA/RNA residues in this entry.

5.5 Carbohydrates [i](#)

There are no oligosaccharides in this entry.

5.6 Ligand geometry [i](#)

Of 17 ligands modelled in this entry, 9 are monoatomic - leaving 8 for Mogul analysis.

In the following table, the Counts columns list the number of bonds (or angles) for which Mogul statistics could be retrieved, the number of bonds (or angles) that are observed in the model and the number of bonds (or angles) that are defined in the Chemical Component Dictionary. The Link column lists molecule types, if any, to which the group is linked. The Z score for a bond length (or angle) is the number of standard deviations the observed value is removed from the

expected value. A bond length (or angle) with $|Z| > 2$ is considered an outlier worth inspection. RMSZ is the root-mean-square of all Z scores of the bond lengths (or angles).

Mol	Type	Chain	Res	Link	Bond lengths			Bond angles		
					Counts	RMSZ	$\# Z > 2$	Counts	RMSZ	$\# Z > 2$
8	GDP	B	501	6	29,30,30	1.17	3 (10%)	45,47,47	1.73	6 (13%)
10	GOL	B	505	-	5,5,5	0.34	0	5,5,5	0.35	0
8	GDP	D	501	6	29,30,30	1.16	2 (6%)	45,47,47	1.74	6 (13%)
12	ACP	F	401	6	31,33,33	2.16	3 (9%)	47,52,52	0.96	3 (6%)
11	A1ISC	D	503	-	81,83,83	2.06	17 (20%)	103,121,121	2.70	38 (36%)
9	MES	B	504	-	12,12,12	1.13	1 (8%)	15,16,16	0.74	0
5	GTP	A	501	6	33,34,34	1.03	4 (12%)	50,54,54	1.54	8 (16%)
5	GTP	C	501	6	33,34,34	0.98	2 (6%)	50,54,54	1.54	8 (16%)

In the following table, the Chirals column lists the number of chiral outliers, the number of chiral centers analysed, the number of these observed in the model and the number defined in the Chemical Component Dictionary. Similar counts are reported in the Torsion and Rings columns. '-' means no outliers of that kind were identified.

Mol	Type	Chain	Res	Link	Chirals	Torsions	Rings
8	GDP	B	501	6	-	3/16/32/32	0/3/3/3
10	GOL	B	505	-	-	0/4/4/4	-
8	GDP	D	501	6	-	3/16/32/32	0/3/3/3
12	ACP	F	401	6	-	4/19/38/38	0/3/3/3
11	A1ISC	D	503	-	-	10/69/120/120	0/6/8/8
9	MES	B	504	-	-	0/6/14/14	0/1/1/1
5	GTP	A	501	6	-	6/22/38/38	0/3/3/3
5	GTP	C	501	6	-	8/22/38/38	0/3/3/3

All (32) bond length outliers are listed below:

Mol	Chain	Res	Type	Atoms	Z	Observed(Å)	Ideal(Å)
12	F	401	ACP	PB-O3A	10.90	1.70	1.58
11	D	503	A1ISC	C61-N60	9.69	1.45	1.36
11	D	503	A1ISC	C59-N60	-6.98	1.39	1.47
11	D	503	A1ISC	C59-C54	-5.53	1.44	1.50
11	D	503	A1ISC	O37-C35	4.98	1.52	1.46
11	D	503	A1ISC	C39-N38	3.63	1.42	1.35
11	D	503	A1ISC	C71-N51	3.44	1.43	1.35
8	D	501	GDP	C5-C4	3.10	1.47	1.38
8	B	501	GDP	C5-C4	3.08	1.47	1.38

Continued on next page...

Continued from previous page...

Mol	Chain	Res	Type	Atoms	Z	Observed(Å)	Ideal(Å)
11	D	503	A1ISC	C62-N60	3.03	1.49	1.46
11	D	503	A1ISC	C35-C34	-3.00	1.43	1.47
11	D	503	A1ISC	C66-N65	2.98	1.42	1.37
9	B	504	MES	C8-S	2.98	1.81	1.77
11	D	503	A1ISC	C64-N65	2.91	1.42	1.37
11	D	503	A1ISC	C33-C34	-2.77	1.48	1.54
11	D	503	A1ISC	C55-C61	-2.75	1.44	1.48
12	F	401	ACP	PA-O3A	2.57	1.62	1.59
11	D	503	A1ISC	C8-N7	2.46	1.38	1.34
8	B	501	GDP	C6-N1	-2.42	1.34	1.38
5	A	501	GTP	PA-O3A	2.37	1.62	1.59
8	D	501	GDP	C6-N1	-2.36	1.34	1.38
11	D	503	A1ISC	C30-N31	2.35	1.39	1.34
11	D	503	A1ISC	C19-C20	-2.32	1.50	1.52
5	A	501	GTP	PB-O3B	2.24	1.61	1.59
11	D	503	A1ISC	C57-C56	2.24	1.42	1.38
5	A	501	GTP	PB-O3A	2.22	1.61	1.59
5	C	501	GTP	PA-O3A	2.20	1.61	1.59
5	C	501	GTP	C2-N3	2.16	1.38	1.33
12	F	401	ACP	PB-O2B	-2.11	1.51	1.56
5	A	501	GTP	C2-N3	2.10	1.38	1.33
8	B	501	GDP	PA-O3A	2.07	1.61	1.59
11	D	503	A1ISC	O29-C30	2.03	1.38	1.35

All (69) bond angle outliers are listed below:

Mol	Chain	Res	Type	Atoms	Z	Observed(°)	Ideal(°)
11	D	503	A1ISC	C66-N65-C64	-12.96	109.60	126.69
11	D	503	A1ISC	O37-C34-C33	-6.00	110.22	117.41
8	D	501	GDP	C5-C4-N3	-5.93	118.96	128.39
8	B	501	GDP	C5-C4-N3	-5.88	119.03	128.39
11	D	503	A1ISC	C59-C54-C55	5.76	113.44	109.82
11	D	503	A1ISC	C8-C4-N5	5.59	114.92	108.12
11	D	503	A1ISC	C23-C22-C20	-5.59	119.83	127.69
11	D	503	A1ISC	O37-C34-C35	5.48	63.53	59.82
11	D	503	A1ISC	C35-O37-C34	-5.36	57.76	60.81
11	D	503	A1ISC	C21-C20-C19	5.22	119.91	115.53
8	B	501	GDP	C2-N3-C4	5.07	121.04	112.30
8	D	501	GDP	C2-N3-C4	5.06	121.01	112.30
11	D	503	A1ISC	C4-C8-N7	-4.77	98.66	105.33
5	C	501	GTP	C5-C4-N3	-4.76	120.81	128.39
5	A	501	GTP	C5-C4-N3	-4.75	120.84	128.39

Continued on next page...

Continued from previous page...

Mol	Chain	Res	Type	Atoms	Z	Observed(°)	Ideal(°)
11	D	503	A1ISC	C54-C59-N60	4.73	103.22	101.79
11	D	503	A1ISC	C18-C13-C14	4.72	125.42	119.01
5	A	501	GTP	C2-N3-C4	4.66	120.32	112.30
5	C	501	GTP	C2-N3-C4	4.50	120.05	112.30
8	D	501	GDP	N9-C4-N3	4.33	134.62	125.95
8	B	501	GDP	N9-C4-N3	4.31	134.57	125.95
11	D	503	A1ISC	C55-C54-C53	-4.15	119.04	120.97
11	D	503	A1ISC	C3-C4-C8	-4.01	122.49	130.26
11	D	503	A1ISC	O43-C46-C12	3.87	119.86	111.48
11	D	503	A1ISC	C59-N60-C61	-3.73	111.58	113.15
11	D	503	A1ISC	C8-N7-N6	3.67	114.33	110.75
8	B	501	GDP	C6-C5-N7	3.60	136.84	130.29
11	D	503	A1ISC	O76-C15-C16	3.53	119.31	115.44
8	D	501	GDP	C6-C5-N7	3.51	136.68	130.29
11	D	503	A1ISC	C9-N7-C8	-3.26	122.75	128.83
11	D	503	A1ISC	C26-N31-C30	-3.23	113.77	123.19
5	C	501	GTP	N9-C4-N3	3.15	132.25	125.95
11	D	503	A1ISC	C67-C66-N65	3.14	120.03	116.69
11	D	503	A1ISC	C28-O29-C30	-3.13	113.06	121.06
5	A	501	GTP	N9-C4-N3	3.02	132.00	125.95
12	F	401	ACP	O2B-PB-O1B	2.98	119.64	109.95
11	D	503	A1ISC	C50-C71-N51	2.97	119.75	114.59
11	D	503	A1ISC	C17-C18-C13	-2.89	115.78	120.28
11	D	503	A1ISC	C54-C55-C61	-2.87	106.14	108.62
5	C	501	GTP	N9-C8-N7	-2.85	108.12	113.40
5	A	501	GTP	C2-N1-C6	-2.84	119.95	125.11
11	D	503	A1ISC	C68-C62-N60	-2.83	110.94	114.03
11	D	503	A1ISC	C15-C14-C13	-2.77	115.94	120.04
5	C	501	GTP	C2-N1-C6	-2.77	120.09	125.11
5	A	501	GTP	N9-C8-N7	-2.76	108.29	113.40
11	D	503	A1ISC	O76-C15-C14	-2.74	119.35	124.08
11	D	503	A1ISC	O29-C30-N31	2.71	123.83	118.78
8	B	501	GDP	C4-C5-N7	-2.67	106.43	110.67
8	D	501	GDP	C4-C5-N7	-2.67	106.43	110.67
11	D	503	A1ISC	C57-C56-C55	-2.63	115.05	119.80
12	F	401	ACP	O1G-PG-C3B	-2.57	105.78	111.37
5	A	501	GTP	O6-C6-C5	-2.56	119.79	126.53
5	C	501	GTP	C8-N7-C5	2.55	108.81	104.26
5	A	501	GTP	C5-C6-N1	2.54	119.72	113.25
5	C	501	GTP	C5-C6-N1	2.48	119.56	113.25
5	A	501	GTP	C8-N7-C5	2.47	108.65	104.26
11	D	503	A1ISC	C4-N5-N6	-2.47	106.34	109.01

Continued on next page...

Continued from previous page...

Mol	Chain	Res	Type	Atoms	Z	Observed(°)	Ideal(°)
5	C	501	GTP	O6-C6-C5	-2.41	120.17	126.53
11	D	503	A1ISC	O29-C28-C33	2.40	110.28	105.68
11	D	503	A1ISC	C62-C64-N65	2.39	119.73	116.24
11	D	503	A1ISC	C77-O76-C15	-2.32	114.10	117.51
11	D	503	A1ISC	O63-C61-N60	2.25	127.12	125.34
11	D	503	A1ISC	C19-C13-C14	-2.17	117.09	120.38
11	D	503	A1ISC	C36-O43-C46	-2.12	114.17	118.03
12	F	401	ACP	PB-O3A-PA	-2.09	125.56	132.37
11	D	503	A1ISC	O32-C30-N31	-2.06	118.51	123.60
8	D	501	GDP	O6-C6-C5	-2.04	121.14	126.53
11	D	503	A1ISC	C40-N38-C17	2.03	119.59	116.74
8	B	501	GDP	O6-C6-C5	-2.02	121.21	126.53

There are no chirality outliers.

All (34) torsion outliers are listed below:

Mol	Chain	Res	Type	Atoms
5	A	501	GTP	C5'-O5'-PA-O3A
5	A	501	GTP	C5'-O5'-PA-O1A
5	C	501	GTP	C5'-O5'-PA-O3A
5	C	501	GTP	C5'-O5'-PA-O1A
8	B	501	GDP	C5'-O5'-PA-O3A
8	B	501	GDP	C5'-O5'-PA-O1A
8	B	501	GDP	C5'-O5'-PA-O2A
8	D	501	GDP	C5'-O5'-PA-O3A
8	D	501	GDP	C5'-O5'-PA-O1A
8	D	501	GDP	C5'-O5'-PA-O2A
11	D	503	A1ISC	C16-C15-O76-C77
11	D	503	A1ISC	C27-C28-C33-C74
11	D	503	A1ISC	O29-C28-C33-C74
12	F	401	ACP	PG-C3B-PB-O1B
12	F	401	ACP	PG-C3B-PB-O2B
12	F	401	ACP	PG-C3B-PB-O3A
12	F	401	ACP	C5'-O5'-PA-O1A
11	D	503	A1ISC	C14-C15-O76-C77
11	D	503	A1ISC	C24-C25-O72-C73
5	C	501	GTP	PB-O3B-PG-O1G
11	D	503	A1ISC	C9-C10-C11-C49
5	C	501	GTP	PB-O3A-PA-O2A
11	D	503	A1ISC	N38-C39-C41-C36
11	D	503	A1ISC	C68-C62-N60-C59
5	A	501	GTP	C5'-O5'-PA-O2A

Continued on next page...

Continued from previous page...

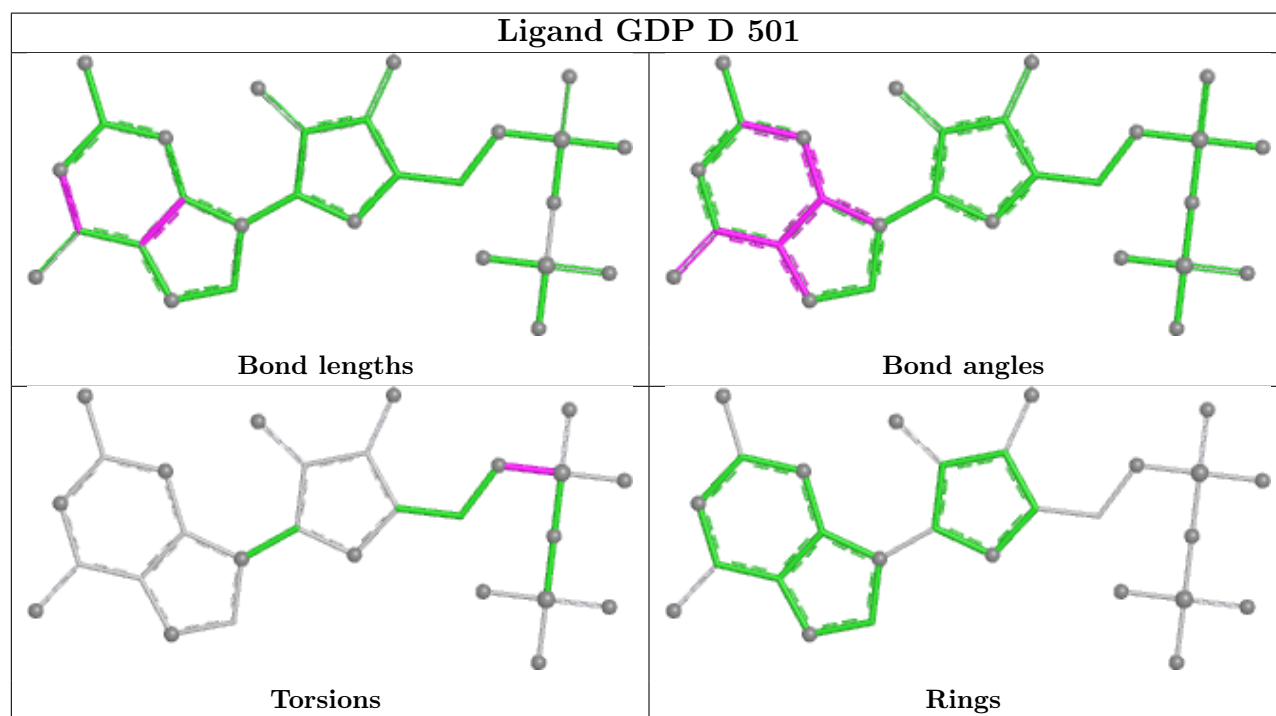
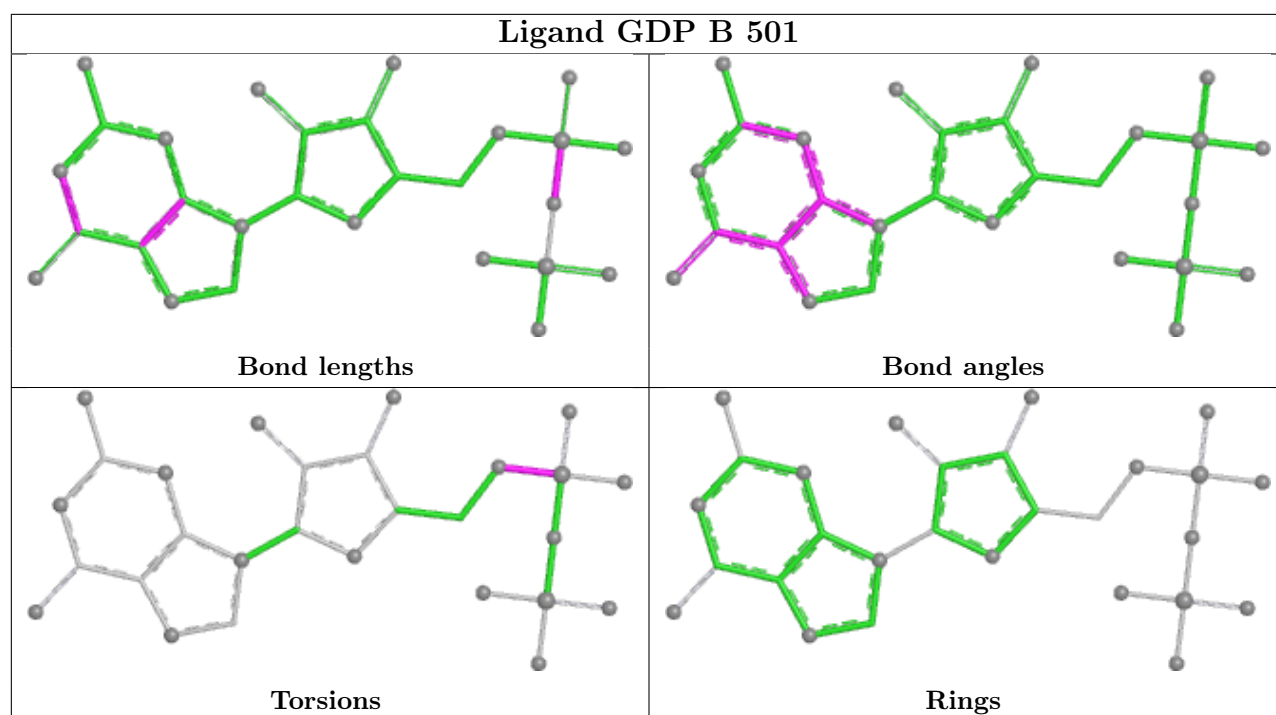
Mol	Chain	Res	Type	Atoms
5	C	501	GTP	C5'-O5'-PA-O2A
5	A	501	GTP	PB-O3A-PA-O2A
11	D	503	A1ISC	C35-C36-O43-C46
5	A	501	GTP	PB-O3B-PG-O2G
5	C	501	GTP	PB-O3B-PG-O2G
5	C	501	GTP	PB-O3B-PG-O3G
5	A	501	GTP	PB-O3A-PA-O1A
11	D	503	A1ISC	C41-C36-O43-C46
5	C	501	GTP	C4'-C5'-O5'-PA

There are no ring outliers.

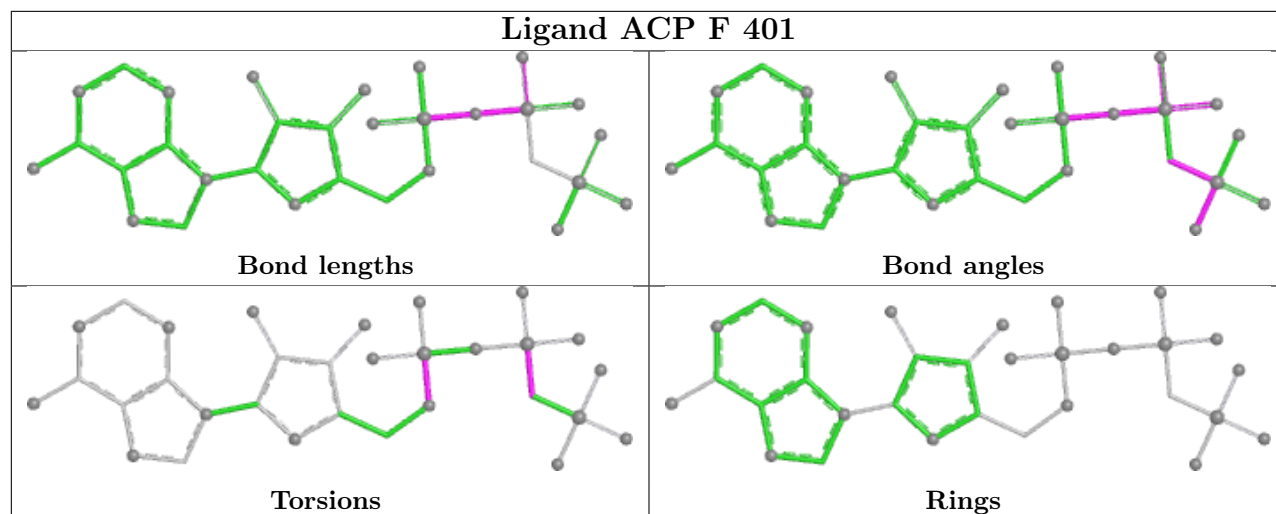
4 monomers are involved in 5 short contacts:

Mol	Chain	Res	Type	Clashes	Symm-Clashes
8	D	501	GDP	1	0
12	F	401	ACP	1	0
9	B	504	MES	2	0
5	A	501	GTP	1	0

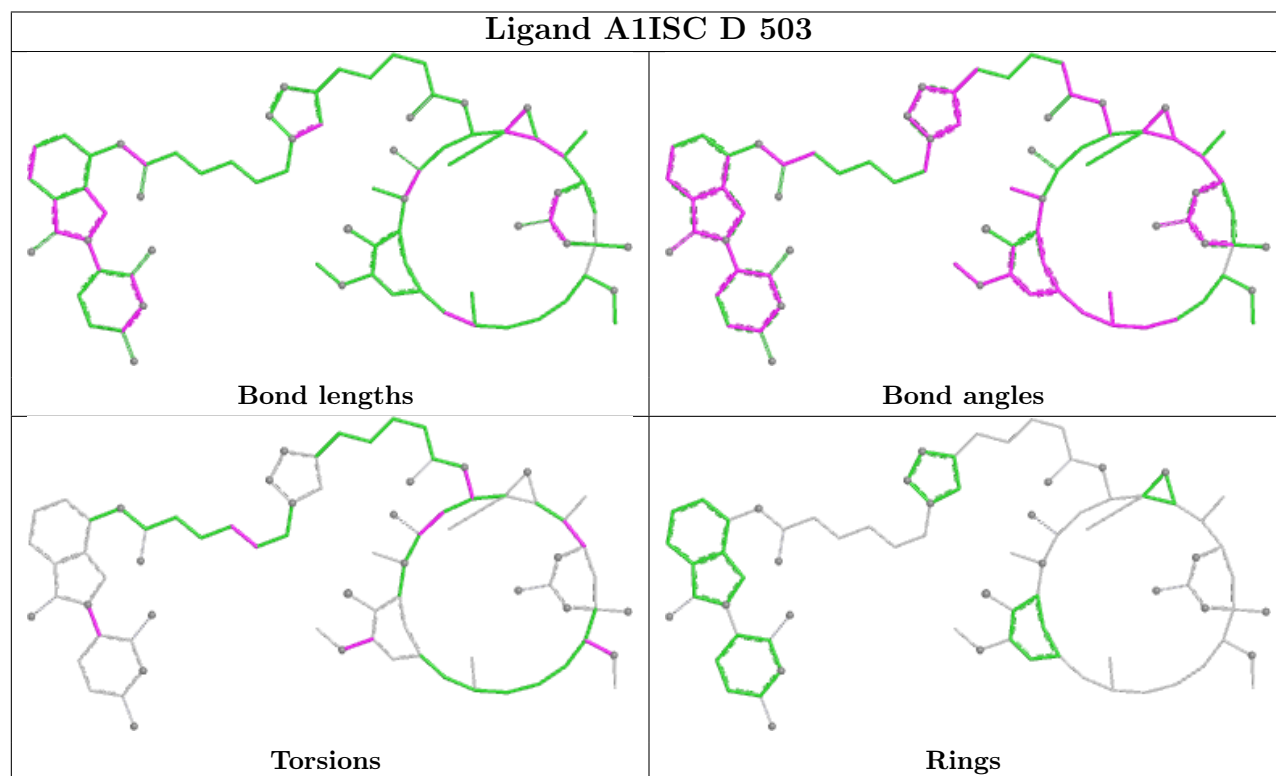
The following is a two-dimensional graphical depiction of Mogul quality analysis of bond lengths, bond angles, torsion angles, and ring geometry for all instances of the Ligand of Interest. In addition, ligands with molecular weight > 250 and outliers as shown on the validation Tables will also be included. For torsion angles, if less than 5% of the Mogul distribution of torsion angles is within 10 degrees of the torsion angle in question, then that torsion angle is considered an outlier. Any bond that is central to one or more torsion angles identified as an outlier by Mogul will be highlighted in the graph. For rings, the root-mean-square deviation (RMSD) between the ring in question and similar rings identified by Mogul is calculated over all ring torsion angles. If the average RMSD is greater than 60 degrees and the minimal RMSD between the ring in question and any Mogul-identified rings is also greater than 60 degrees, then that ring is considered an outlier. The outliers are highlighted in purple. The color gray indicates Mogul did not find sufficient equivalents in the CSD to analyse the geometry.



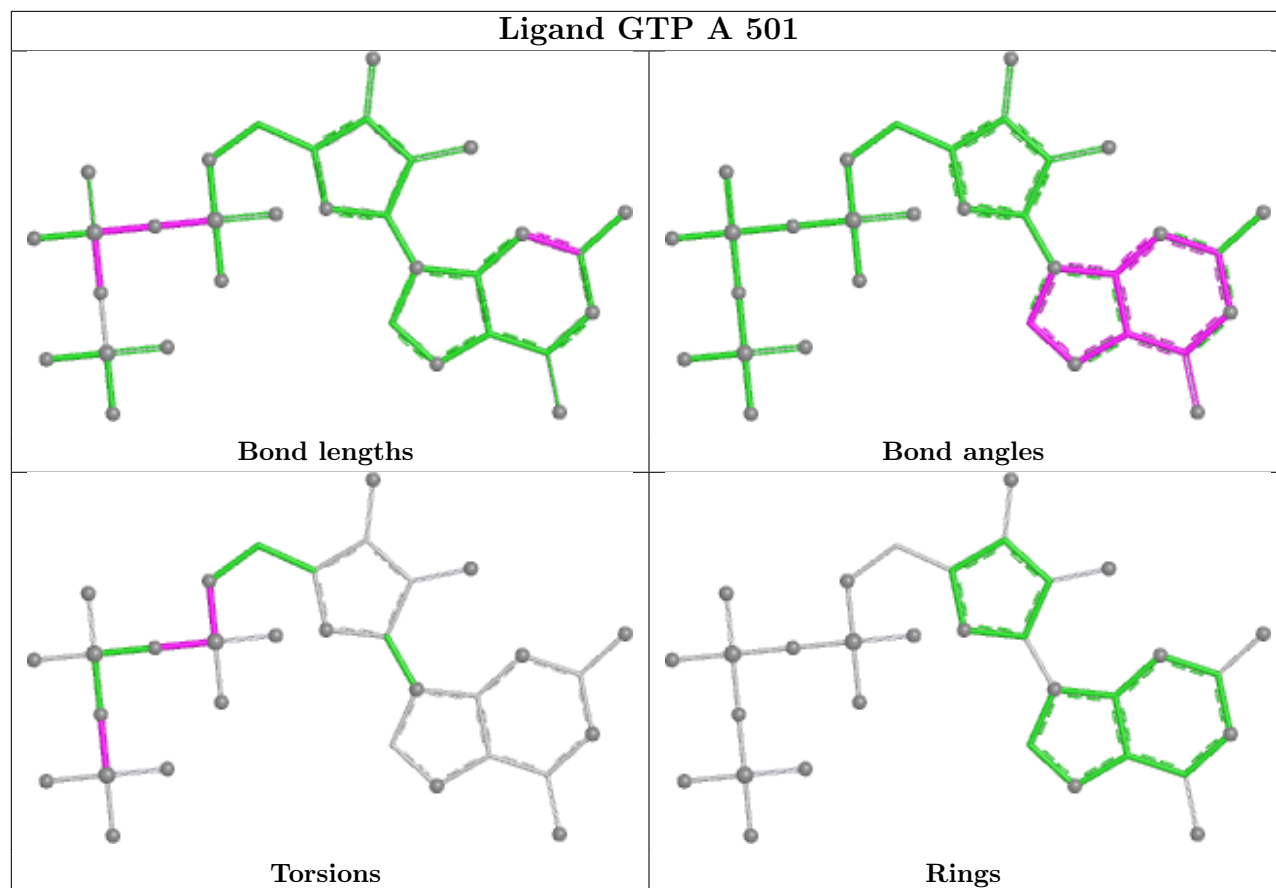
Ligand ACP F 401



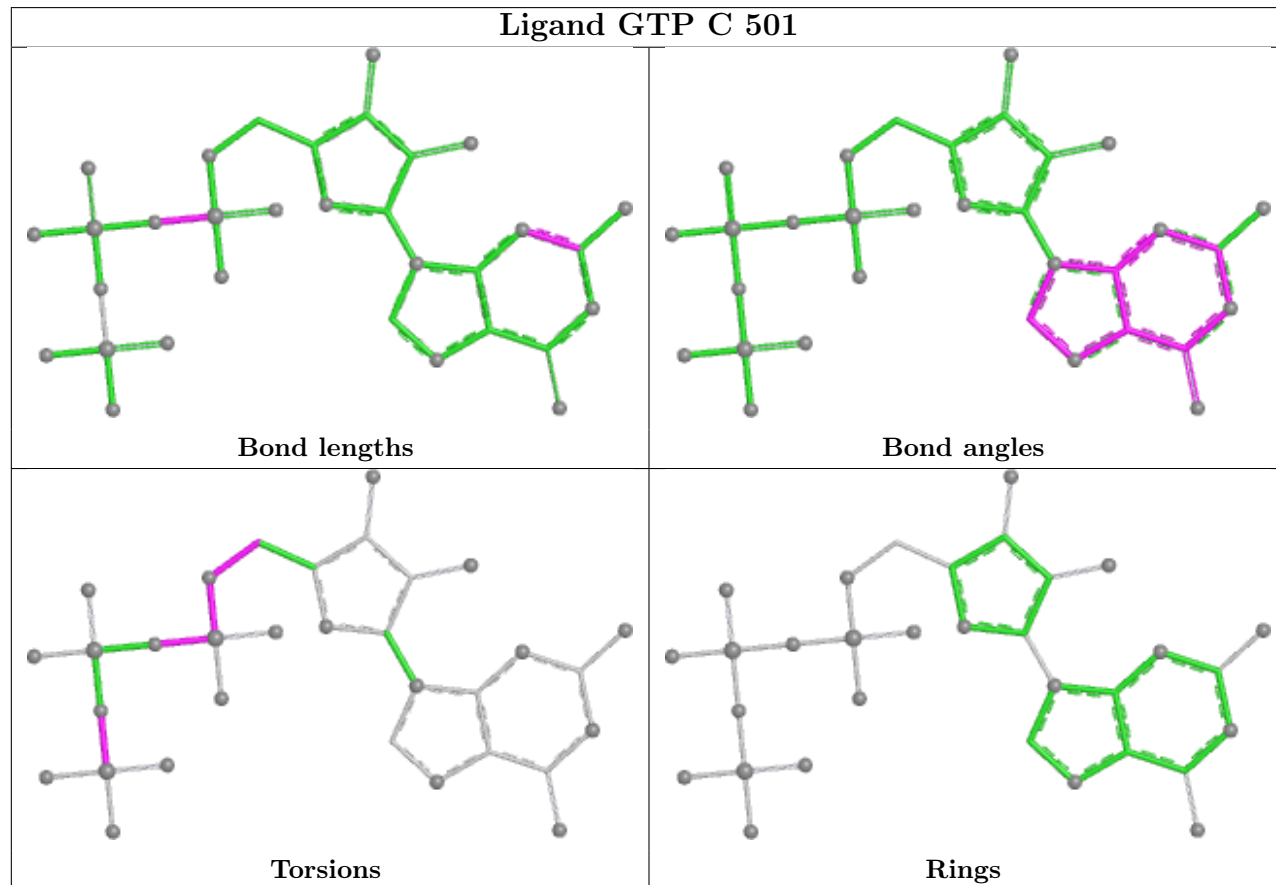
Ligand A1ISC D 503



Ligand GTP A 501



Ligand GTP C 501



5.7 Other polymers [i](#)

There are no such residues in this entry.

5.8 Polymer linkage issues [i](#)

There are no chain breaks in this entry.

6 Fit of model and data ⓘ

6.1 Protein, DNA and RNA chains ⓘ

In the following table, the column labelled ‘#RSRZ > 2’ contains the number (and percentage) of RSRZ outliers, followed by percent RSRZ outliers for the chain as percentile scores relative to all X-ray entries and entries of similar resolution. The OWAB column contains the minimum, median, 95th percentile and maximum values of the occupancy-weighted average B-factor per residue. The column labelled ‘Q < 0.9’ lists the number of (and percentage) of residues with an average occupancy less than 0.9.

Mol	Chain	Analysed	<RSRZ>	#RSRZ>2	OWAB(Å ²)	Q<0.9
1	A	438/451 (97%)	0.39	11 (2%) 58 60	31, 70, 102, 159	2 (0%)
1	C	440/451 (97%)	0.09	12 (2%) 56 58	25, 56, 81, 123	1 (0%)
2	B	424/445 (95%)	0.32	12 (2%) 55 57	29, 64, 100, 151	1 (0%)
2	D	426/445 (95%)	0.56	18 (4%) 40 42	50, 78, 114, 144	0
3	E	123/142 (86%)	0.69	9 (7%) 21 23	56, 81, 120, 163	0
4	F	345/384 (89%)	0.73	32 (9%) 14 16	56, 92, 154, 200	0
All	All	2196/2318 (94%)	0.42	94 (4%) 40 41	25, 72, 123, 200	4 (0%)

All (94) RSRZ outliers are listed below:

Mol	Chain	Res	Type	RSRZ
2	D	279	GLY	6.5
4	F	155	ALA	6.2
3	E	143	ALA	5.1
1	C	440	VAL	4.6
2	B	438	ALA	4.5
4	F	231	ALA	4.1
2	D	277	SER	3.7
4	F	159	GLY	3.7
1	A	282	TYR	3.6
1	A	281	ALA	3.5
1	C	357	TYR	3.4
4	F	125	THR	3.4
2	B	276	THR	3.3
2	B	275	LEU	3.2
3	E	28	SER	3.2
2	D	172	MET	3.2
4	F	382	HIS	3.2
4	F	330	ILE	3.2
3	E	139	LEU	3.2

Continued on next page...

Continued from previous page...

Mol	Chain	Res	Type	RSRZ
4	F	105	LEU	3.2
2	B	1	MET	3.1
2	D	406	HIS	3.1
4	F	249	TYR	3.0
4	F	381	HIS	3.0
1	C	302	MET	3.0
4	F	153	ALA	3.0
4	F	245	ILE	3.0
2	D	285	ALA	3.0
2	D	128	SER	3.0
4	F	161	LEU	2.9
1	A	437	VAL	2.9
3	E	27	PRO	2.9
2	B	285	ALA	2.9
4	F	181	VAL	2.9
1	C	1	MET	2.9
2	B	277	SER	2.8
2	B	2	ARG	2.8
4	F	194	PRO	2.7
2	D	286	LEU	2.7
4	F	240	LEU	2.7
1	A	262	TYR	2.7
1	A	357	TYR	2.7
1	C	80	THR	2.6
4	F	173	ILE	2.6
2	B	57	THR	2.6
4	F	186	LEU	2.6
3	E	15	THR	2.6
1	C	340	SER	2.6
2	D	248	LEU	2.5
1	C	163	LYS	2.5
2	D	57	THR	2.5
4	F	130	VAL	2.5
4	F	296	MET	2.5
3	E	45	PRO	2.5
1	C	178	SER	2.4
4	F	169	LEU	2.4
1	A	438	ASP	2.4
2	B	284	ARG	2.4
2	D	276	THR	2.4
1	C	341	ILE	2.4
2	D	440	ALA	2.4

Continued on next page...

Continued from previous page...

Mol	Chain	Res	Type	RSRZ
3	E	6	MET	2.3
4	F	182	ILE	2.3
1	A	283	HIS	2.3
2	D	37	HIS	2.3
4	F	131	PHE	2.3
2	D	275	LEU	2.3
4	F	142	ARG	2.3
1	C	245	ASP	2.2
4	F	333	ASN	2.2
1	C	179	THR	2.2
4	F	167	SER	2.2
2	D	247	GLN	2.2
4	F	373	SER	2.2
2	B	248	LEU	2.2
4	F	179	VAL	2.2
1	A	196	GLU	2.2
1	C	358	GLN	2.2
4	F	160	ILE	2.1
4	F	147	TRP	2.1
2	B	50	ASN	2.1
4	F	172	PHE	2.1
4	F	379	HIS	2.1
2	D	278	ARG	2.1
2	D	414	ASP	2.1
2	D	177	VAL	2.1
1	A	340	SER	2.1
2	D	340	SER	2.1
4	F	149	ALA	2.1
2	B	82	PRO	2.1
1	A	179	THR	2.1
3	E	8	VAL	2.1
1	A	130	THR	2.0
3	E	50	ILE	2.0

6.2 Non-standard residues in protein, DNA, RNA chains [i](#)

There are no non-standard protein/DNA/RNA residues in this entry.

6.3 Carbohydrates [i](#)

There are no oligosaccharides in this entry.

6.4 Ligands ⓘ

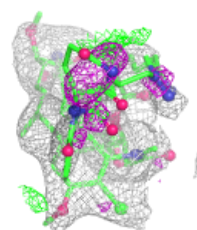
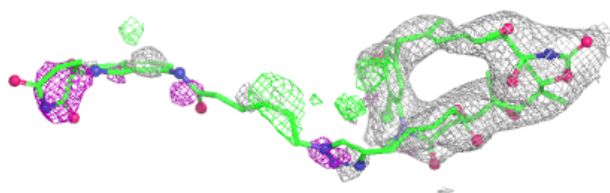
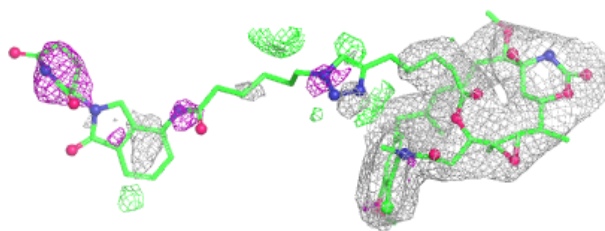
In the following table, the Atoms column lists the number of modelled atoms in the group and the number defined in the chemical component dictionary. The B-factors column lists the minimum, median, 95th percentile and maximum values of B factors of atoms in the group. The column labelled 'Q< 0.9' lists the number of atoms with occupancy less than 0.9.

Mol	Type	Chain	Res	Atoms	RSCC	RSR	B-factors(Å ²)	Q<0.9
11	A1ISC	D	503	76/76	0.70	0.20	83,106,158,165	0
6	MG	F	402	1/1	0.76	0.12	97,97,97,97	0
7	CA	B	503	1/1	0.83	0.15	107,107,107,107	0
10	GOL	B	505	6/6	0.87	0.17	78,83,84,87	0
12	ACP	F	401	31/31	0.90	0.11	96,106,113,115	0
7	CA	A	504	1/1	0.91	0.14	102,102,102,102	0
9	MES	B	504	12/12	0.93	0.11	55,60,71,72	0
8	GDP	D	501	28/28	0.93	0.10	71,77,88,94	0
7	CA	A	503	1/1	0.94	0.06	91,91,91,91	0
6	MG	D	502	1/1	0.96	0.06	74,74,74,74	0
8	GDP	B	501	28/28	0.97	0.07	42,53,58,59	0
5	GTP	A	501	32/32	0.97	0.06	45,53,60,61	0
5	GTP	C	501	32/32	0.98	0.06	42,48,53,56	0
6	MG	B	502	1/1	0.99	0.07	47,47,47,47	0
7	CA	C	503	1/1	0.99	0.03	75,75,75,75	0
6	MG	A	502	1/1	1.00	0.02	49,49,49,49	0
6	MG	C	502	1/1	1.00	0.01	47,47,47,47	0

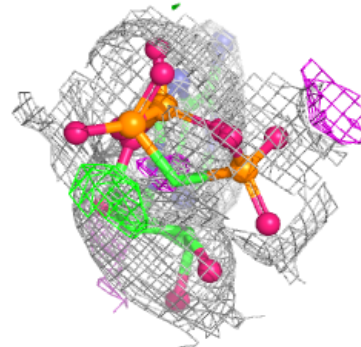
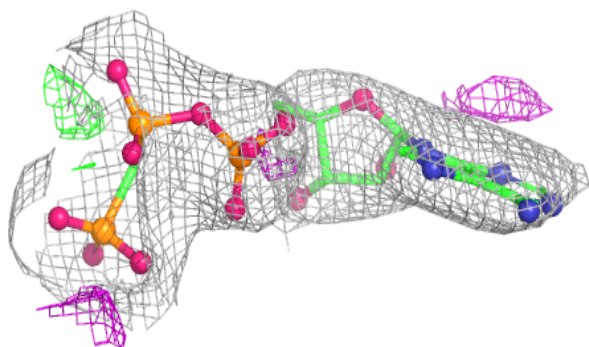
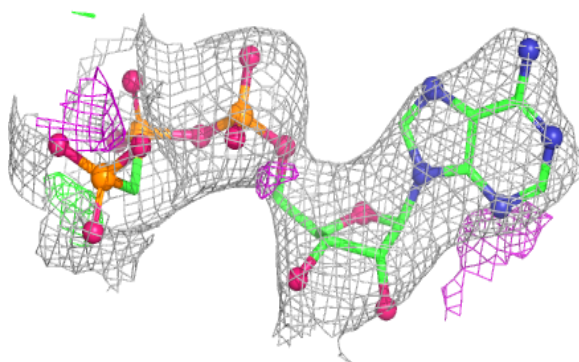
The following is a graphical depiction of the model fit to experimental electron density of all instances of the Ligand of Interest. In addition, ligands with molecular weight > 250 and outliers as shown on the geometry validation Tables will also be included. Each fit is shown from different orientation to approximate a three-dimensional view.

Electron density around A1ISC D 503:

$2mF_o-DF_c$ (at 0.7 rmsd) in gray
 mF_o-DF_c (at 3 rmsd) in purple (negative)
and green (positive)

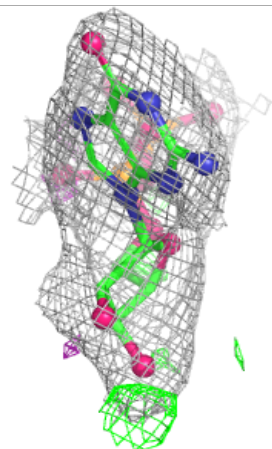
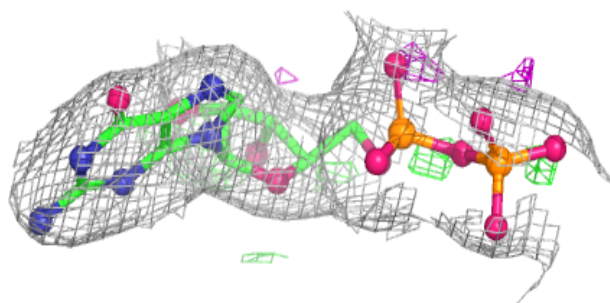
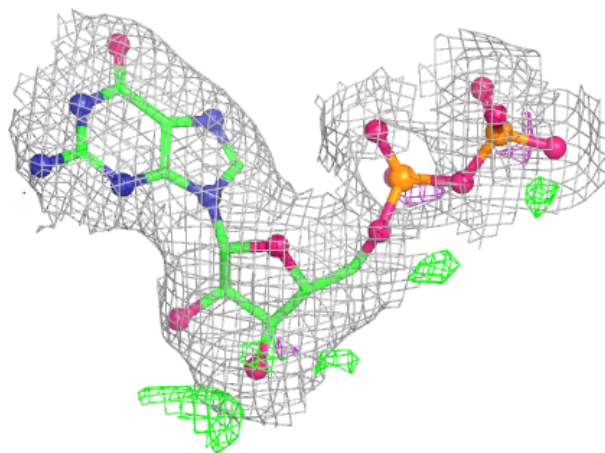
**Electron density around ACP F 401:**

$2mF_o-DF_c$ (at 0.7 rmsd) in gray
 mF_o-DF_c (at 3 rmsd) in purple (negative)
and green (positive)



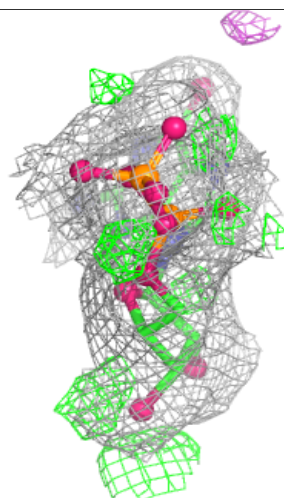
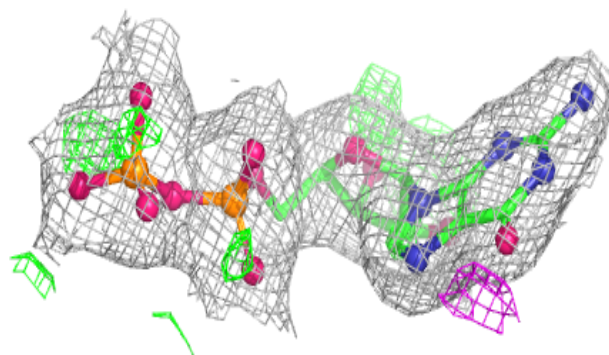
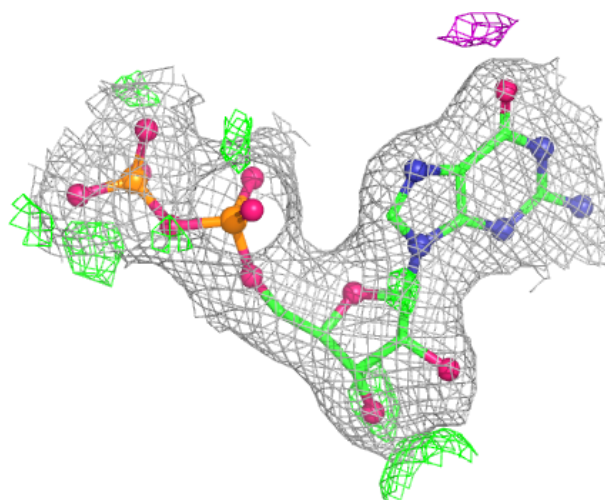
Electron density around GDP D 501:

$2mF_o-DF_c$ (at 0.7 rmsd) in gray
 mF_o-DF_c (at 3 rmsd) in purple (negative)
and green (positive)



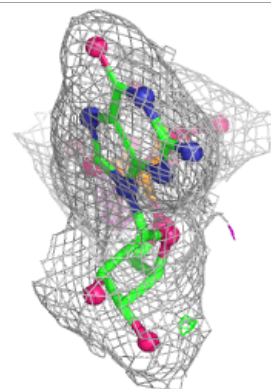
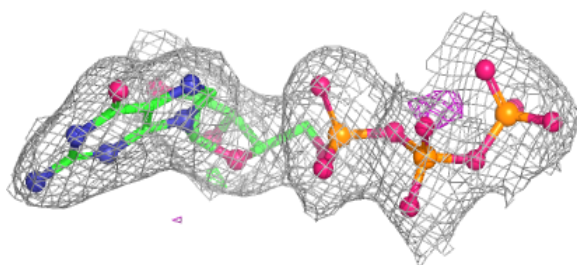
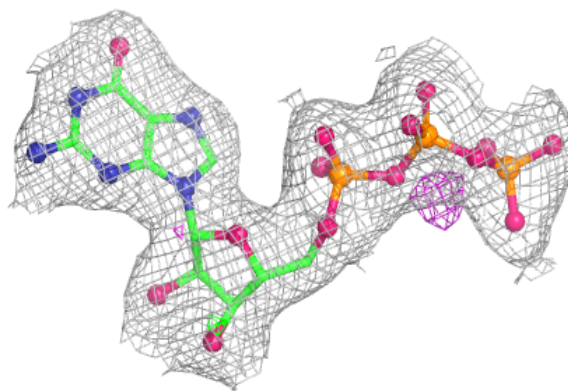
Electron density around GDP B 501:

$2mF_o-DF_c$ (at 0.7 rmsd) in gray
 mF_o-DF_c (at 3 rmsd) in purple (negative)
and green (positive)

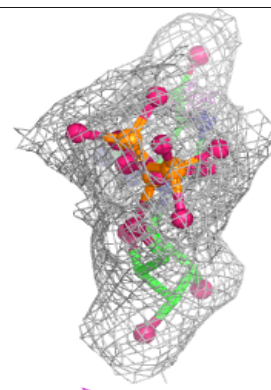
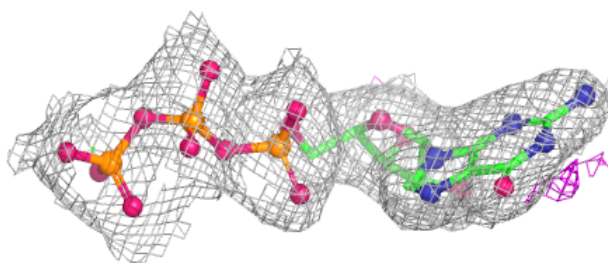
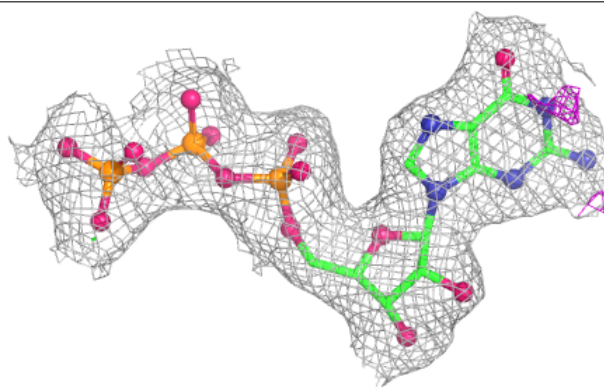


Electron density around GTP A 501:

$2mF_o-DF_c$ (at 0.7 rmsd) in gray
 mF_o-DF_c (at 3 rmsd) in purple (negative)
and green (positive)

**Electron density around GTP C 501:**

$2mF_o-DF_c$ (at 0.7 rmsd) in gray
 mF_o-DF_c (at 3 rmsd) in purple (negative)
and green (positive)



6.5 Other polymers [i](#)

There are no such residues in this entry.