



Full wwPDB X-ray Structure Validation Report ⓘ

Apr 26, 2026 – 05:35 AM EDT

PDB ID : 9GZB / pdb_00009gzb
Title : Human PPAR-gamma ligand binding domain in complex with AKGO52
Authors : Oerlemans, G.J.M.; Koops, A.A.; Brunsveld, L.
Deposited on : 2024-10-03
Resolution : 2.20 Å(reported)

This is a Full wwPDB X-ray Structure Validation Report for a publicly released PDB entry.

We welcome your comments at validation@mail.wwpdb.org

A user guide is available at

<https://www.wwpdb.org/validation/2017/XrayValidationReportHelp>

with specific help available everywhere you see the ⓘ symbol.

The types of validation reports are described at

<http://www.wwpdb.org/validation/2017/FAQs#types>.

The following versions of software and data (see [references ⓘ](#)) were used in the production of this report:

MolProbity	:	4-5-2 with Phenix2.0
Mogul	:	2022.3.0, CSD as543be (2022)
Xtriage (Phenix)	:	2.0
EDS	:	3.0
Buster-report	:	wwPDB partial adaption of 1.1.7 (2018)
Percentile statistics	:	20250101.v01 (using entries in the PDB archive January 1st 2025)
CCP4	:	9.0.010 (Gargrove)
Density-Fitness	:	1.0.12
Ideal geometry (proteins)	:	Engh & Huber (2001)
Ideal geometry (DNA, RNA)	:	Parkinson et al. (1996)
Validation Pipeline (wwPDB-VP)	:	2.49

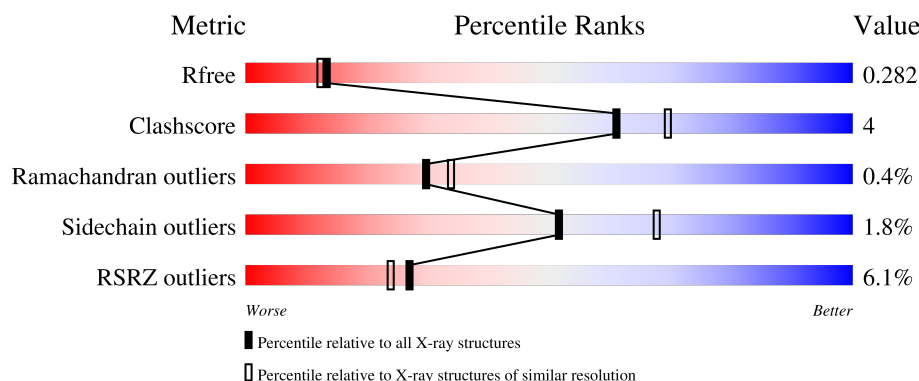
1 Overall quality at a glance

The following experimental techniques were used to determine the structure:

X-RAY DIFFRACTION

The reported resolution of this entry is 2.20 Å.

Percentile scores (ranging between 0-100) for global validation metrics of the entry are shown in the following graphic. The table shows the number of entries on which the scores are based.



Metric	Whole archive (#Entries)	Similar resolution (#Entries, resolution range(Å))
R_{free}	180053	6164 (2.20-2.20)
Clashscore	190562	6851 (2.20-2.20)
Ramachandran outliers	187476	6768 (2.20-2.20)
Sidechain outliers	187428	6769 (2.20-2.20)
RSRZ outliers	180081	6166 (2.20-2.20)

The table below summarises the geometric issues observed across the polymeric chains and their fit to the electron density. The red, orange, yellow and green segments of the lower bar indicate the fraction of residues that contain outliers for ≥ 3 , 2, 1 and 0 types of geometric quality criteria respectively. A grey segment represents the fraction of residues that are not modelled. The numeric value for each fraction is indicated below the corresponding segment, with a dot representing fractions $\leq 5\%$. The upper red bar (where present) indicates the fraction of residues that have poor fit to the electron density. The numeric value is given above the bar.

Mol	Chain	Length	Quality of chain
1	A	275	<div> <div>7%</div> <div> <div></div> <div>80%</div> <div>12%</div> <div>7%</div> </div> </div>
1	B	275	<div> <div>4%</div> <div> <div></div> <div>84%</div> <div>8%</div> <div>7%</div> </div> </div>

2 Entry composition

There are 3 unique types of molecules in this entry. The entry contains 3949 atoms, of which 0 are hydrogens and 0 are deuteriums.

In the tables below, the ZeroOcc column contains the number of atoms modelled with zero occupancy, the AltConf column contains the number of residues with at least one atom in alternate conformation and the Trace column contains the number of residues modelled with at most 2 atoms.

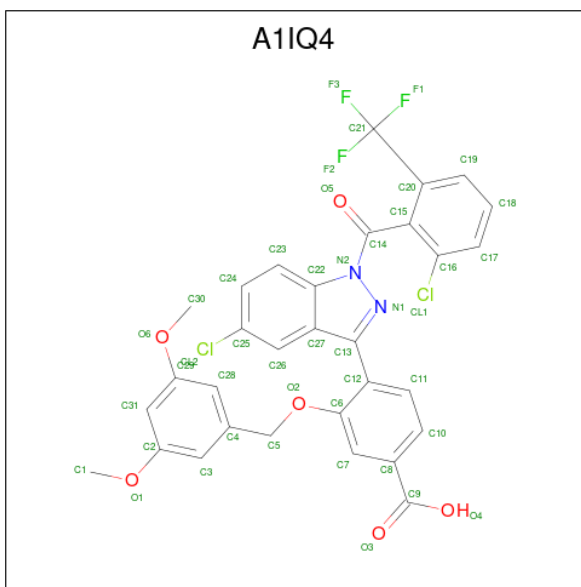
- Molecule 1 is a protein called Peroxisome proliferator-activated receptor gamma.

Mol	Chain	Residues	Atoms					ZeroOcc	AltConf	Trace
1	A	256	Total	C	N	O	S	0	0	0
			1899	1230	314	347	8			
1	B	255	Total	C	N	O	S	0	0	0
			1936	1257	315	356	8			

There are 8 discrepancies between the modelled and reference sequences:

Chain	Residue	Modelled	Actual	Comment	Reference
A	231	GLY	-	expression tag	UNP P37231
A	232	SER	-	expression tag	UNP P37231
A	233	HIS	-	expression tag	UNP P37231
A	234	MET	-	expression tag	UNP P37231
B	231	GLY	-	expression tag	UNP P37231
B	232	SER	-	expression tag	UNP P37231
B	233	HIS	-	expression tag	UNP P37231
B	234	MET	-	expression tag	UNP P37231

- Molecule 2 is 4-[5-chloranyl-1-[2-chloranyl-6-(trifluoromethyl)phenyl]carbonyl-indazol-3-yl]-3-[(3,5-dimethoxyphenyl)methoxy]benzoic acid (CCD ID: A1IQ4) (formula: C₃₁H₂₁Cl₂F₃N₂O₆) (labeled as "Ligand of Interest" by depositor).



Mol	Chain	Residues	Atoms						ZeroOcc	AltConf
2	A	1	Total	C	Cl	F	N	O	0	0
			44	31	2	3	2	6		
2	B	1	Total	C	Cl	F	N	O	0	0
			44	31	2	3	2	6		

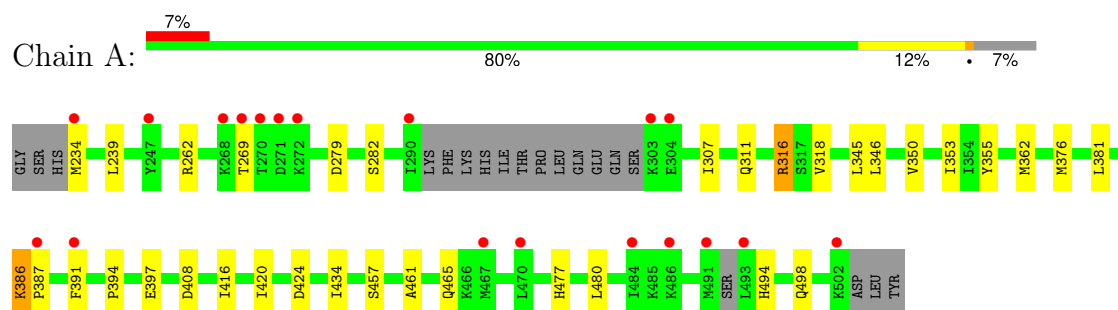
- Molecule 3 is water.

Mol	Chain	Residues	Atoms		ZeroOcc	AltConf
3	A	12	Total	O	0	0
			12	12		
3	B	14	Total	O	0	0
			14	14		

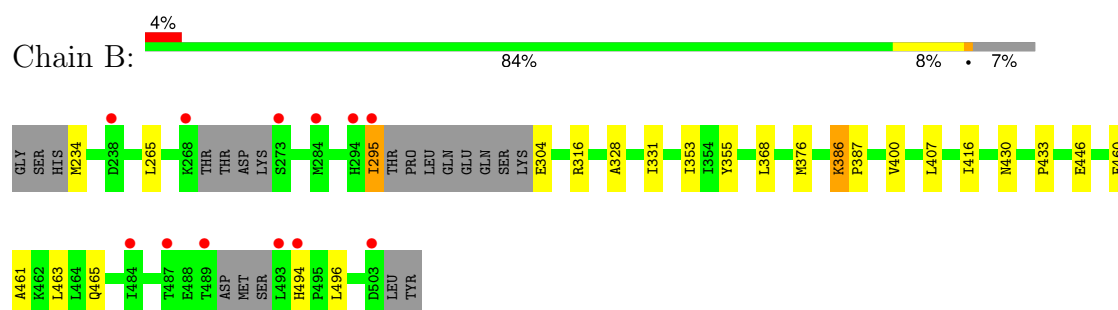
3 Residue-property plots [i](#)

These plots are drawn for all protein, RNA, DNA and oligosaccharide chains in the entry. The first graphic for a chain summarises the proportions of the various outlier classes displayed in the second graphic. The second graphic shows the sequence view annotated by issues in geometry and electron density. Residues are color-coded according to the number of geometric quality criteria for which they contain at least one outlier: green = 0, yellow = 1, orange = 2 and red = 3 or more. A red dot above a residue indicates a poor fit to the electron density ($RSRZ > 2$). Stretches of 2 or more consecutive residues without any outlier are shown as a green connector. Residues present in the sample, but not in the model, are shown in grey.

- Molecule 1: Peroxisome proliferator-activated receptor gamma



- Molecule 1: Peroxisome proliferator-activated receptor gamma



4 Data and refinement statistics

Property	Value	Source
Space group	C 1 2 1	Depositor
Cell constants a, b, c, α , β , γ	93.54Å 62.64Å 119.19Å 90.00° 101.95° 90.00°	Depositor
Resolution (Å)	45.95 – 2.20 45.95 – 2.20	Depositor EDS
% Data completeness (in resolution range)	98.2 (45.95-2.20) 98.3 (45.95-2.20)	Depositor EDS
R_{merge}	(Not available)	Depositor
R_{sym}	(Not available)	Depositor
$\langle I/\sigma(I) \rangle$ ¹	1.29 (at 2.20Å)	Xtriage
Refinement program	REFMAC 5, PHENIX 1.20.1_4487, PDB-REDO	Depositor
R, R_{free}	0.223 , 0.274 0.232 , 0.282	Depositor DCC
R_{free} test set	1686 reflections (4.88%)	wwPDB-VP
Wilson B-factor (Å ²)	49.2	Xtriage
Anisotropy	0.408	Xtriage
Bulk solvent k_{sol} (e/Å ³), B_{sol} (Å ²)	0.34 , 48.6	EDS
L-test for twinning ²	$\langle L \rangle = 0.49$, $\langle L^2 \rangle = 0.33$	Xtriage
Estimated twinning fraction	No twinning to report.	Xtriage
F_o, F_c correlation	0.95	EDS
Total number of atoms	3949	wwPDB-VP
Average B, all atoms (Å ²)	62.0	wwPDB-VP

Xtriage's analysis on translational NCS is as follows: *The largest off-origin peak in the Patterson function is 5.50% of the height of the origin peak. No significant pseudotranslation is detected.*

¹Intensities estimated from amplitudes.

²Theoretical values of $\langle |L| \rangle$, $\langle L^2 \rangle$ for acentric reflections are 0.5, 0.333 respectively for untwinned datasets, and 0.375, 0.2 for perfectly twinned datasets.

5 Model quality

5.1 Standard geometry

Bond lengths and bond angles in the following residue types are not validated in this section: A1IQ4

The Z score for a bond length (or angle) is the number of standard deviations the observed value is removed from the expected value. A bond length (or angle) with $|Z| > 5$ is considered an outlier worth inspection. RMSZ is the root-mean-square of all Z scores of the bond lengths (or angles).

Mol	Chain	Bond lengths		Bond angles	
		RMSZ	$\# Z > 5$	RMSZ	$\# Z > 5$
1	A	0.39	0/1931	0.59	0/2616
1	B	0.39	0/1968	0.58	0/2660
All	All	0.39	0/3899	0.58	0/5276

Chiral center outliers are detected by calculating the chiral volume of a chiral center and verifying if the center is modelled as a planar moiety or with the opposite hand. A planarity outlier is detected by checking planarity of atoms in a peptide group, atoms in a mainchain group or atoms of a sidechain that are expected to be planar.

Mol	Chain	#Chirality outliers	#Planarity outliers
1	A	0	1
1	B	0	1
All	All	0	2

There are no bond length outliers.

There are no bond angle outliers.

There are no chirality outliers.

All (2) planarity outliers are listed below:

Mol	Chain	Res	Type	Group
1	A	316	ARG	Sidechain
1	B	316	ARG	Sidechain

5.2 Too-close contacts

In the following table, the Non-H and H(model) columns list the number of non-hydrogen atoms and hydrogen atoms in the chain respectively. The H(added) column lists the number of hydrogen atoms added and optimized by MolProbity. The Clashes column lists the number of clashes within the asymmetric unit, whereas Symm-Clashes lists symmetry-related clashes.

Mol	Chain	Non-H	H(model)	H(added)	Clashes	Symm-Clashes
1	A	1899	0	1823	19	0
1	B	1936	0	1879	13	0
2	A	44	0	0	1	0
2	B	44	0	0	0	0
3	A	12	0	0	1	0
3	B	14	0	0	1	0
All	All	3949	0	3702	32	0

The all-atom clashscore is defined as the number of clashes found per 1000 atoms (including hydrogen atoms). The all-atom clashscore for this structure is 4.

All (32) close contacts within the same asymmetric unit are listed below, sorted by their clash magnitude.

Atom-1	Atom-2	Interatomic distance (Å)	Clash overlap (Å)
1:A:353:ILE:HG23	1:A:416:ILE:HD12	1.79	0.64
1:B:234:MET:N	3:B:701:HOH:O	2.32	0.61
1:A:234:MET:HE2	1:A:239:LEU:HD23	1.81	0.61
1:A:424:ASP:OD1	1:A:424:ASP:N	2.34	0.59
1:A:376:MET:HE3	1:A:381:LEU:HD21	1.88	0.56
1:A:461:ALA:O	1:A:465:GLN:HG3	2.06	0.55
1:A:394:PRO:HA	1:A:397:GLU:HG3	1.90	0.54
1:B:461:ALA:O	1:B:465:GLN:HG3	2.07	0.54
1:A:279:ASP:OD1	1:A:282:SER:OG	2.25	0.51
1:A:234:MET:HE2	1:A:239:LEU:CD2	2.43	0.49
1:B:265:LEU:HD21	1:B:368:LEU:HG	1.95	0.48
1:A:353:ILE:HD11	1:A:420:ILE:HG13	1.97	0.47
1:B:446:GLU:HG3	1:B:460:PHE:CD2	2.50	0.47
1:A:346:LEU:O	1:A:350:VAL:HG22	2.16	0.46
1:B:328:ALA:HA	1:B:331:ILE:HD12	1.98	0.46
1:A:307:ILE:O	1:A:311:GLN:HG2	2.17	0.44
1:A:408:ASP:HB2	3:A:704:HOH:O	2.18	0.44
1:A:345:LEU:HD11	1:A:434:ILE:HD13	1.98	0.44
1:A:391:PHE:HA	1:A:480:LEU:HD13	1.99	0.44
1:B:295:ILE:H	1:B:295:ILE:HG12	1.40	0.44
1:B:494:HIS:CE1	1:B:496:LEU:HB2	2.53	0.43
1:B:386:LYS:CB	1:B:387:PRO:CD	2.97	0.43
1:A:262:ARG:NH2	1:A:362:MET:O	2.51	0.43
1:B:494:HIS:ND1	1:B:496:LEU:HB2	2.34	0.43
1:B:430:ASN:O	1:B:433:PRO:HD2	2.19	0.42
1:B:376:MET:HB3	1:B:376:MET:HE2	1.53	0.42
1:A:355:TYR:OH	1:A:477:HIS:HB2	2.20	0.41
1:A:316:ARG:NE	2:A:601:A1IQ4:O3	2.54	0.41

Continued on next page...

Continued from previous page...

Atom-1	Atom-2	Interatomic distance (Å)	Clash overlap (Å)
1:A:386:LYS:CB	1:A:387:PRO:CD	2.98	0.41
1:B:407:LEU:HD11	1:B:463:LEU:HD13	2.03	0.41
1:A:318:VAL:HG21	1:A:494:HIS:CG	2.57	0.40
1:B:353:ILE:HG23	1:B:416:ILE:HD12	2.03	0.40

There are no symmetry-related clashes.

5.3 Torsion angles [i](#)

5.3.1 Protein backbone [i](#)

In the following table, the Percentiles column shows the percent Ramachandran outliers of the chain as a percentile score with respect to all X-ray entries followed by that with respect to entries of similar resolution.

The Analysed column shows the number of residues for which the backbone conformation was analysed, and the total number of residues.

Mol	Chain	Analysed	Favoured	Allowed	Outliers	Percentiles	
1	A	250/275 (91%)	246 (98%)	3 (1%)	1 (0%)	30	34
1	B	247/275 (90%)	243 (98%)	3 (1%)	1 (0%)	30	34
All	All	497/550 (90%)	489 (98%)	6 (1%)	2 (0%)	30	34

All (2) Ramachandran outliers are listed below:

Mol	Chain	Res	Type
1	A	386	LYS
1	B	386	LYS

5.3.2 Protein sidechains [i](#)

In the following table, the Percentiles column shows the percent sidechain outliers of the chain as a percentile score with respect to all X-ray entries followed by that with respect to entries of similar resolution.

The Analysed column shows the number of residues for which the sidechain conformation was analysed, and the total number of residues.

Continued on next page...

Continued from previous page...

Mol	Chain	Analysed	Rotameric	Outliers	Percentiles
1	A	187/247 (76%)	184 (98%)	3 (2%)	55 71
1	B	195/247 (79%)	191 (98%)	4 (2%)	47 63
All	All	382/494 (77%)	375 (98%)	7 (2%)	51 68

All (7) residues with a non-rotameric sidechain are listed below:

Mol	Chain	Res	Type
1	A	269	THR
1	A	457	SER
1	A	498	GLN
1	B	295	ILE
1	B	304	GLU
1	B	355	TYR
1	B	400	VAL

Sometimes sidechains can be flipped to improve hydrogen bonding and reduce clashes. All (7) such sidechains are listed below:

Mol	Chain	Res	Type
1	A	373	GLN
1	A	438	GLN
1	A	443	GLN
1	B	281	ASN
1	B	336	ASN
1	B	373	GLN
1	B	458	GLN

5.3.3 RNA ⓘ

There are no RNA molecules in this entry.

5.4 Non-standard residues in protein, DNA, RNA chains ⓘ

There are no non-standard protein/DNA/RNA residues in this entry.

5.5 Carbohydrates [i](#)

There are no oligosaccharides in this entry.

5.6 Ligand geometry [i](#)

2 ligands are modelled in this entry.

In the following table, the Counts columns list the number of bonds (or angles) for which Mogul statistics could be retrieved, the number of bonds (or angles) that are observed in the model and the number of bonds (or angles) that are defined in the Chemical Component Dictionary. The Link column lists molecule types, if any, to which the group is linked. The Z score for a bond length (or angle) is the number of standard deviations the observed value is removed from the expected value. A bond length (or angle) with $|Z| > 2$ is considered an outlier worth inspection. RMSZ is the root-mean-square of all Z scores of the bond lengths (or angles).

Mol	Type	Chain	Res	Link	Bond lengths			Bond angles		
					Counts	RMSZ	$\# Z > 2$	Counts	RMSZ	$\# Z > 2$
2	A1IQ4	B	601	-	48,48,48	0.51	0	67,71,71	0.84	2 (2%)
2	A1IQ4	A	601	-	48,48,48	0.52	0	67,71,71	0.94	5 (7%)

In the following table, the Chirals column lists the number of chiral outliers, the number of chiral centers analysed, the number of these observed in the model and the number defined in the Chemical Component Dictionary. Similar counts are reported in the Torsion and Rings columns. '-' means no outliers of that kind were identified.

Mol	Type	Chain	Res	Link	Chirals	Torsions	Rings
2	A1IQ4	B	601	-	-	1/31/31/31	0/5/5/5
2	A1IQ4	A	601	-	-	4/31/31/31	0/5/5/5

There are no bond length outliers.

All (7) bond angle outliers are listed below:

Mol	Chain	Res	Type	Atoms	Z	Observed(°)	Ideal(°)
2	A	601	A1IQ4	O2-C6-C7	-3.12	116.76	123.49
2	B	601	A1IQ4	C27-C22-N2	-2.80	105.23	106.40
2	A	601	A1IQ4	O2-C6-C12	2.56	122.61	116.97
2	A	601	A1IQ4	C15-C14-N2	2.50	119.20	116.28
2	B	601	A1IQ4	C16-C15-C14	-2.37	118.35	121.19
2	A	601	A1IQ4	C16-C15-C14	-2.34	118.39	121.19
2	A	601	A1IQ4	C27-C22-N2	-2.16	105.50	106.40

There are no chirality outliers.

All (5) torsion outliers are listed below:

Mol	Chain	Res	Type	Atoms
2	A	601	A1IQ4	N2-C14-C15-C16
2	A	601	A1IQ4	O5-C14-C15-C16
2	B	601	A1IQ4	O5-C14-C15-C16
2	A	601	A1IQ4	C15-C20-C21-F2
2	A	601	A1IQ4	C15-C20-C21-F3

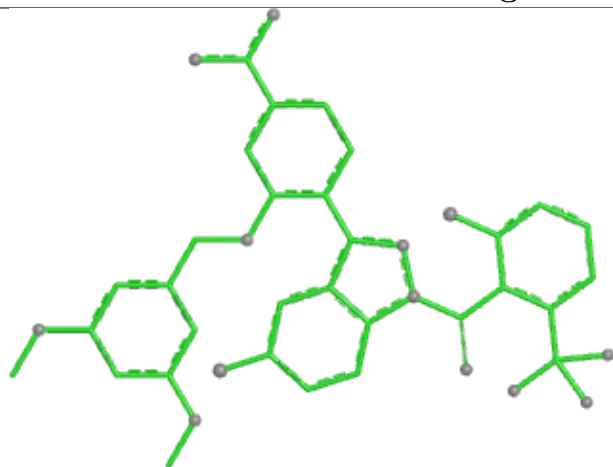
There are no ring outliers.

1 monomer is involved in 1 short contact:

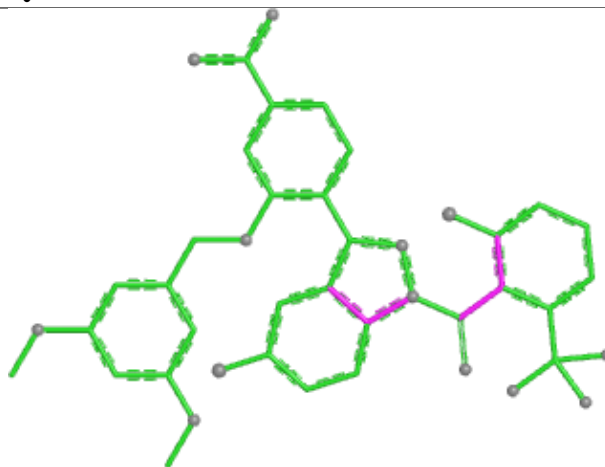
Mol	Chain	Res	Type	Clashes	Symm-Clashes
2	A	601	A1IQ4	1	0

The following is a two-dimensional graphical depiction of Mogul quality analysis of bond lengths, bond angles, torsion angles, and ring geometry for all instances of the Ligand of Interest. In addition, ligands with molecular weight > 250 and outliers as shown on the validation Tables will also be included. For torsion angles, if less than 5% of the Mogul distribution of torsion angles is within 10 degrees of the torsion angle in question, then that torsion angle is considered an outlier. Any bond that is central to one or more torsion angles identified as an outlier by Mogul will be highlighted in the graph. For rings, the root-mean-square deviation (RMSD) between the ring in question and similar rings identified by Mogul is calculated over all ring torsion angles. If the average RMSD is greater than 60 degrees and the minimal RMSD between the ring in question and any Mogul-identified rings is also greater than 60 degrees, then that ring is considered an outlier. The outliers are highlighted in purple. The color gray indicates Mogul did not find sufficient equivalents in the CSD to analyse the geometry.

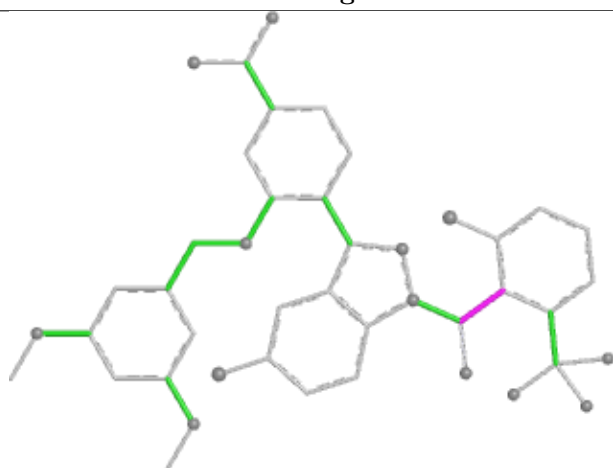
Ligand A1IQ4 B 601



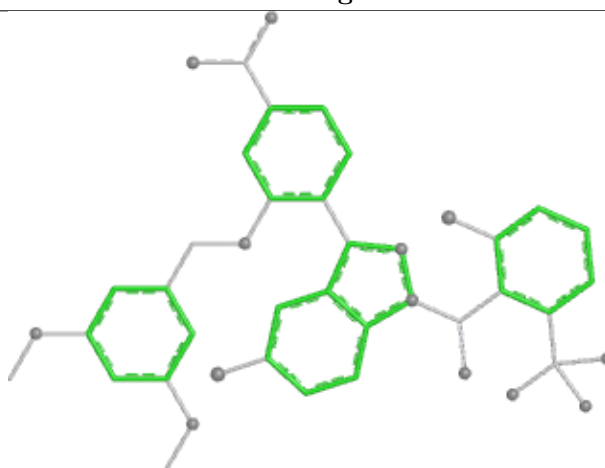
Bond lengths



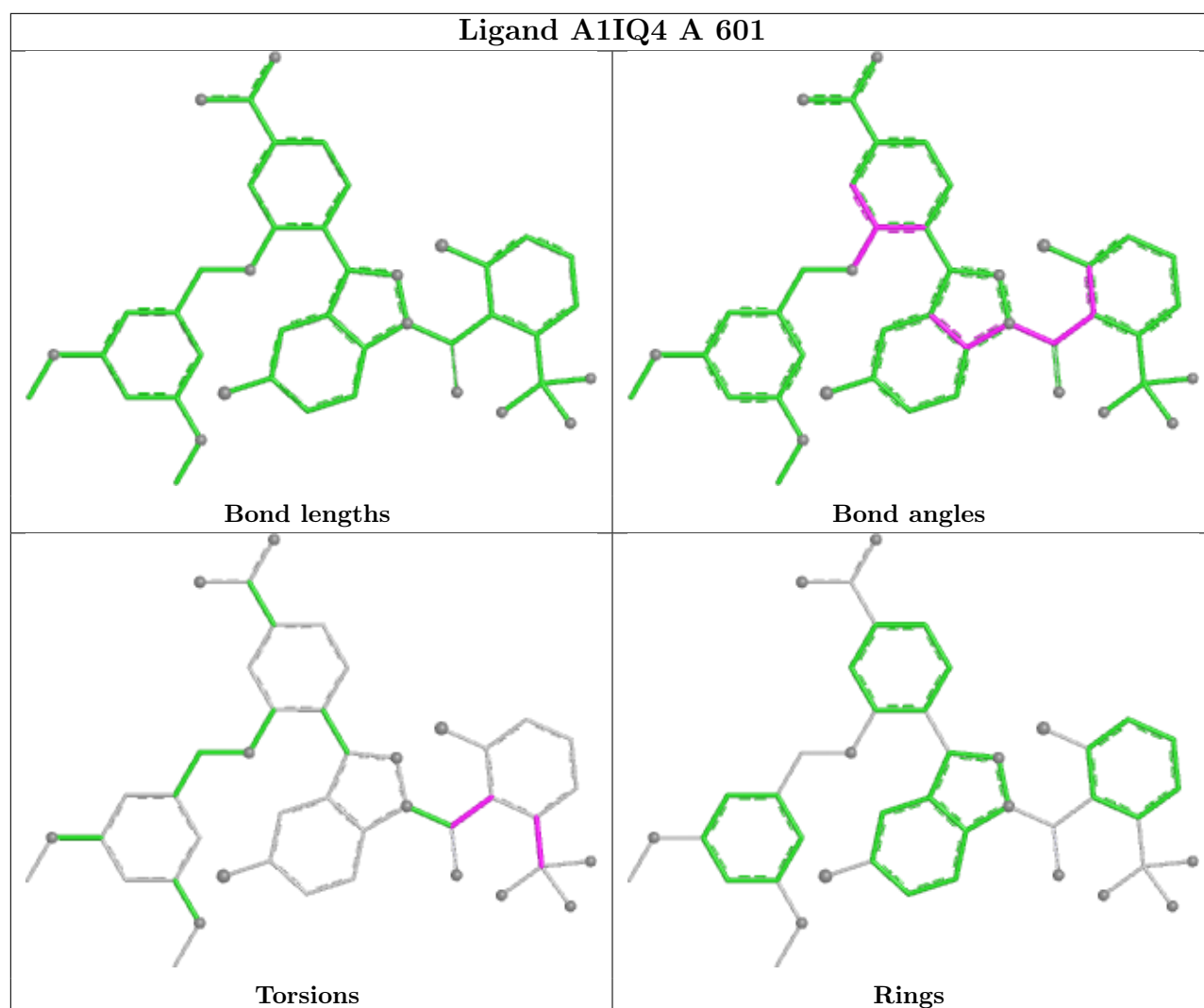
Bond angles



Torsions



Rings



5.7 Other polymers [i](#)

There are no such residues in this entry.

5.8 Polymer linkage issues [i](#)

There are no chain breaks in this entry.

6 Fit of model and data

6.1 Protein, DNA and RNA chains

In the following table, the column labelled ‘#RSRZ > 2’ contains the number (and percentage) of RSRZ outliers, followed by percent RSRZ outliers for the chain as percentile scores relative to all X-ray entries and entries of similar resolution. The OWAB column contains the minimum, median, 95th percentile and maximum values of the occupancy-weighted average B-factor per residue. The column labelled ‘Q < 0.9’ lists the number of (and percentage) of residues with an average occupancy less than 0.9.

Mol	Chain	Analysed	<RSRZ>	#RSRZ>2	OWAB(Å ²)	Q<0.9
1	A	256/275 (93%)	0.61	19 (7%) 20 18	42, 62, 87, 96	0
1	B	255/275 (92%)	0.47	12 (4%) 36 33	39, 59, 86, 105	0
All	All	511/550 (92%)	0.54	31 (6%) 27 24	39, 61, 87, 105	0

All (31) RSRZ outliers are listed below:

Mol	Chain	Res	Type	RSRZ
1	B	489	THR	5.9
1	A	268	LYS	4.5
1	B	295	ILE	3.9
1	B	294	HIS	3.7
1	B	503	ASP	3.6
1	A	470	LEU	3.3
1	A	270	THR	3.3
1	A	502	LYS	3.2
1	B	493	LEU	3.1
1	A	484	ILE	3.0
1	A	290	ILE	2.9
1	A	387	PRO	2.9
1	A	493	LEU	2.9
1	B	484	ILE	2.8
1	A	269	THR	2.7
1	A	491	MET	2.6
1	B	494	HIS	2.6
1	B	238	ASP	2.5
1	A	391	PHE	2.5
1	A	234	MET	2.4
1	A	304	GLU	2.4
1	A	272	LYS	2.3
1	A	303	LYS	2.3
1	A	247	TYR	2.3

Continued on next page...

Continued from previous page...

Mol	Chain	Res	Type	RSRZ
1	B	268	LYS	2.3
1	B	487	THR	2.2
1	A	467	MET	2.2
1	A	486	LYS	2.2
1	B	273	SER	2.2
1	A	271	ASP	2.1
1	B	284	MET	2.0

6.2 Non-standard residues in protein, DNA, RNA chains [i](#)

There are no non-standard protein/DNA/RNA residues in this entry.

6.3 Carbohydrates [i](#)

There are no oligosaccharides in this entry.

6.4 Ligands [i](#)

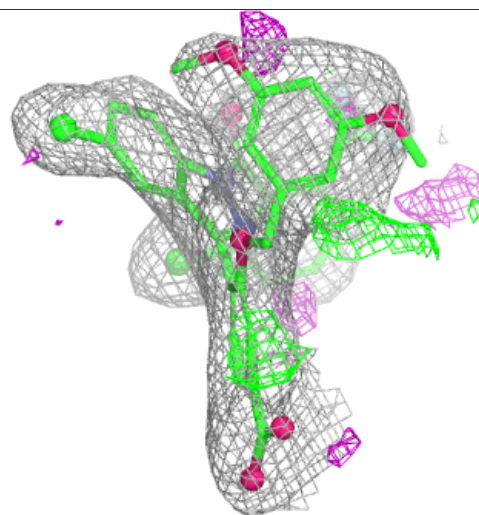
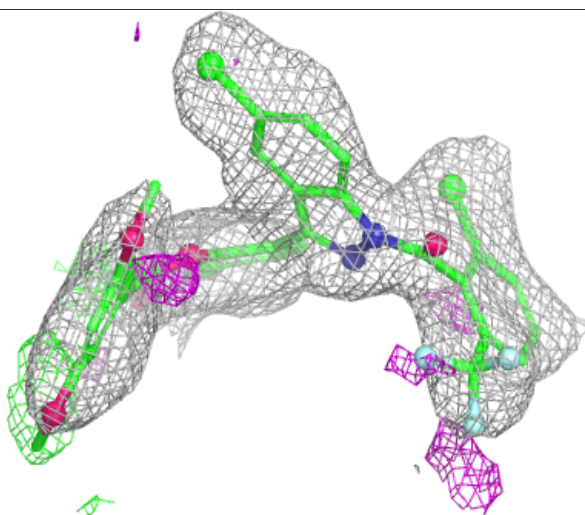
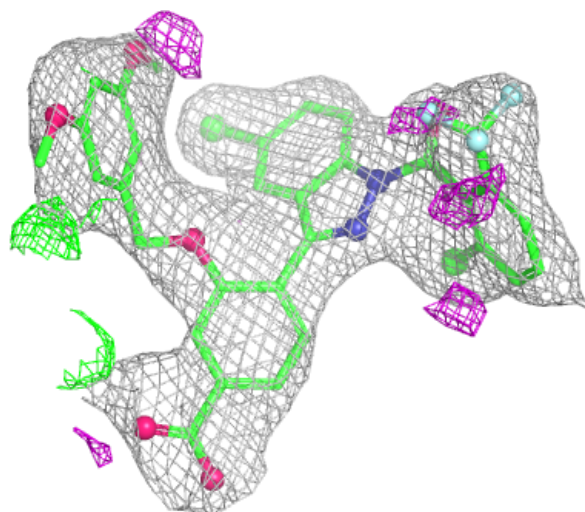
In the following table, the Atoms column lists the number of modelled atoms in the group and the number defined in the chemical component dictionary. The B-factors column lists the minimum, median, 95th percentile and maximum values of B factors of atoms in the group. The column labelled 'Q< 0.9' lists the number of atoms with occupancy less than 0.9.

Mol	Type	Chain	Res	Atoms	RSCC	RSR	B-factors(Å ²)	Q<0.9
2	A1IQ4	A	601	44/44	0.84	0.14	73,85,99,111	0
2	A1IQ4	B	601	44/44	0.95	0.09	52,62,68,75	0

The following is a graphical depiction of the model fit to experimental electron density of all instances of the Ligand of Interest. In addition, ligands with molecular weight > 250 and outliers as shown on the geometry validation Tables will also be included. Each fit is shown from different orientation to approximate a three-dimensional view.

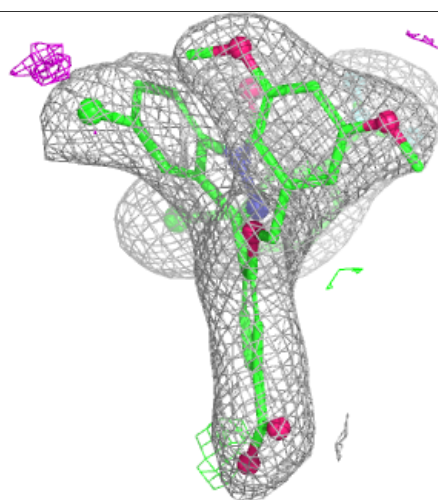
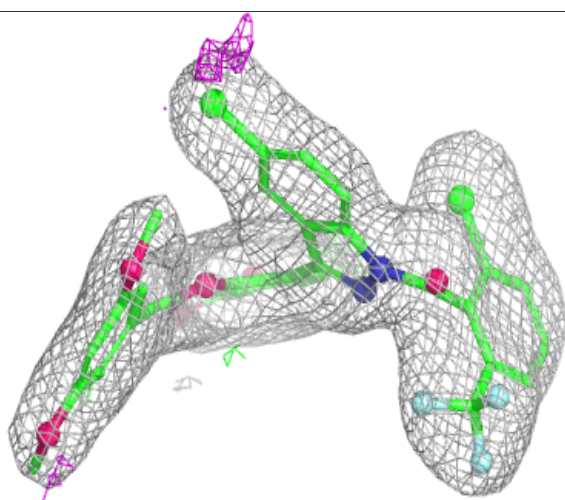
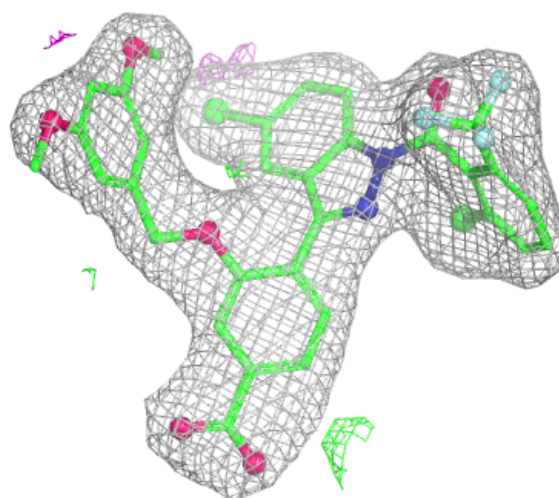
Electron density around A1IQ4 A 601:

$2mF_o-DF_c$ (at 0.7 rmsd) in gray
 mF_o-DF_c (at 3 rmsd) in purple (negative)
and green (positive)



Electron density around A1IQ4 B 601:

$2mF_o-DF_c$ (at 0.7 rmsd) in gray
 mF_o-DF_c (at 3 rmsd) in purple (negative)
and green (positive)



6.5 Other polymers ⓘ

There are no such residues in this entry.