



Full wwPDB X-ray Structure Validation Report ⓘ

Mar 5, 2026 – 03:26 AM UTC

PDB ID : 7GR5 / pdb_00007gr5
Title : Crystal Structure of PAS-GAF domain of the phytochrome from *Deinococcus radiodurans* at femto and picosecond timescales (233 fs)
Authors : Shankar, M.K.; Westenhoff, S.
Deposited on : 2023-11-07
Resolution : 2.12 Å(reported)

This is a Full wwPDB X-ray Structure Validation Report for a publicly released PDB entry.

We welcome your comments at validation@mail.wwpdb.org

A user guide is available at

<https://www.wwpdb.org/validation/2017/XrayValidationReportHelp>

with specific help available everywhere you see the ⓘ symbol.

The types of validation reports are described at

<http://www.wwpdb.org/validation/2017/FAQs#types>.

The following versions of software and data (see [references ⓘ](#)) were used in the production of this report:

MolProbity	:	4-5-2 with Phenix2.0
Mogul	:	2022.3.0, CSD as543be (2022)
Xtriage (Phenix)	:	2.0
EDS	:	3.0
Buster-report	:	wwPDB partial adaption of 1.1.7 (2018)
Percentile statistics	:	20250101.v01 (using entries in the PDB archive January 1st 2025)
CCP4	:	9.0.010 (Gargrove)
Density-Fitness	:	1.0.12
Ideal geometry (proteins)	:	Engh & Huber (2001)
Ideal geometry (DNA, RNA)	:	Parkinson et al. (1996)
Validation Pipeline (wwPDB-VP)	:	2.49

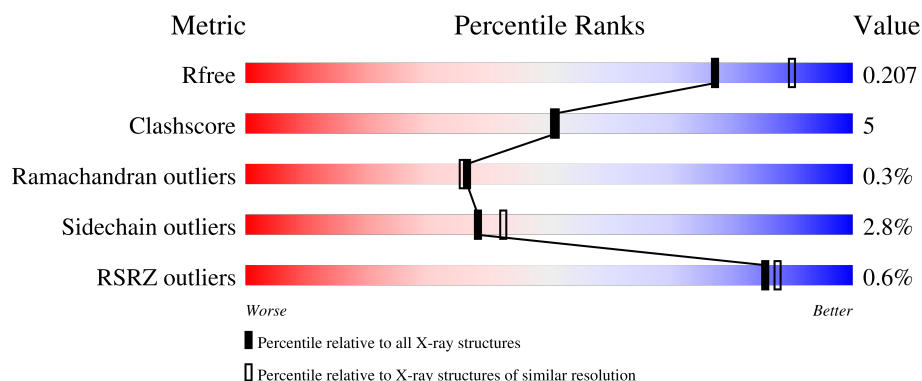
1 Overall quality at a glance

The following experimental techniques were used to determine the structure:

X-RAY DIFFRACTION

The reported resolution of this entry is 2.12 Å.

Percentile scores (ranging between 0-100) for global validation metrics of the entry are shown in the following graphic. The table shows the number of entries on which the scores are based.



Metric	Whole archive (#Entries)	Similar resolution (#Entries, resolution range(Å))
R_{free}	180053	8290 (2.14-2.10)
Clashscore	190562	8817 (2.14-2.10)
Ramachandran outliers	187476	8738 (2.14-2.10)
Sidechain outliers	187428	8739 (2.14-2.10)
RSRZ outliers	180081	8294 (2.14-2.10)

The table below summarises the geometric issues observed across the polymeric chains and their fit to the electron density. The red, orange, yellow and green segments of the lower bar indicate the fraction of residues that contain outliers for ≥ 3 , 2, 1 and 0 types of geometric quality criteria respectively. A grey segment represents the fraction of residues that are not modelled. The numeric value for each fraction is indicated below the corresponding segment, with a dot representing fractions $\leq 5\%$. The upper red bar (where present) indicates the fraction of residues that have poor fit to the electron density. The numeric value is given above the bar.

Mol	Chain	Length	Quality of chain
1	A	343	
1	B	343	

2 Entry composition

There are 3 unique types of molecules in this entry. The entry contains 5231 atoms, of which 0 are hydrogens and 0 are deuteriums.

In the tables below, the ZeroOcc column contains the number of atoms modelled with zero occupancy, the AltConf column contains the number of residues with at least one atom in alternate conformation and the Trace column contains the number of residues modelled with at most 2 atoms.

- Molecule 1 is a protein called Bacteriophytochrome.

Mol	Chain	Residues	Atoms					ZeroOcc	AltConf	Trace
1	A	315	Total	C	N	O	S	0	5	0
			2451	1566	431	445	9			
1	B	313	Total	C	N	O	S	0	2	0
			2408	1537	425	437	9			

There are 44 discrepancies between the modelled and reference sequences:

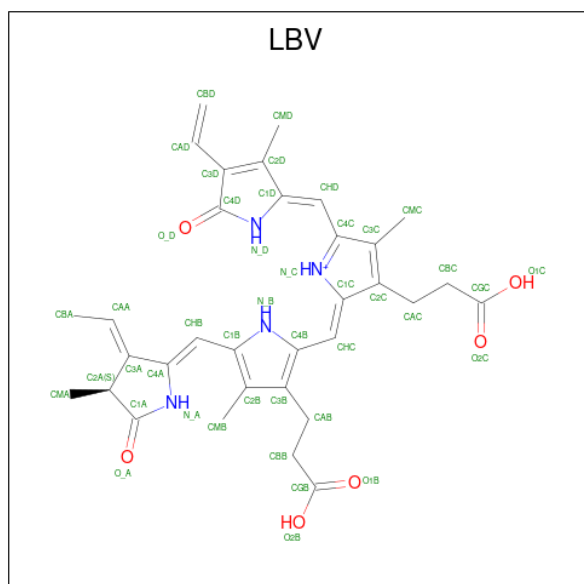
Chain	Residue	Modelled	Actual	Comment	Reference
A	-13	MET	-	expression tag	UNP Q9RZA4
A	-12	ALA	-	expression tag	UNP Q9RZA4
A	-11	SER	-	expression tag	UNP Q9RZA4
A	-10	MET	-	expression tag	UNP Q9RZA4
A	-9	THR	-	expression tag	UNP Q9RZA4
A	-8	GLY	-	expression tag	UNP Q9RZA4
A	-7	GLY	-	expression tag	UNP Q9RZA4
A	-6	GLN	-	expression tag	UNP Q9RZA4
A	-5	GLN	-	expression tag	UNP Q9RZA4
A	-4	MET	-	expression tag	UNP Q9RZA4
A	-3	GLY	-	expression tag	UNP Q9RZA4
A	-2	ARG	-	expression tag	UNP Q9RZA4
A	-1	GLY	-	expression tag	UNP Q9RZA4
A	0	SER	-	expression tag	UNP Q9RZA4
A	322	LEU	-	expression tag	UNP Q9RZA4
A	323	GLU	-	expression tag	UNP Q9RZA4
A	324	HIS	-	expression tag	UNP Q9RZA4
A	325	HIS	-	expression tag	UNP Q9RZA4
A	326	HIS	-	expression tag	UNP Q9RZA4
A	327	HIS	-	expression tag	UNP Q9RZA4
A	328	HIS	-	expression tag	UNP Q9RZA4
A	329	HIS	-	expression tag	UNP Q9RZA4
B	-13	MET	-	expression tag	UNP Q9RZA4
B	-12	ALA	-	expression tag	UNP Q9RZA4
B	-11	SER	-	expression tag	UNP Q9RZA4

Continued on next page...

Continued from previous page...

Chain	Residue	Modelled	Actual	Comment	Reference
B	-10	MET	-	expression tag	UNP Q9RZA4
B	-9	THR	-	expression tag	UNP Q9RZA4
B	-8	GLY	-	expression tag	UNP Q9RZA4
B	-7	GLY	-	expression tag	UNP Q9RZA4
B	-6	GLN	-	expression tag	UNP Q9RZA4
B	-5	GLN	-	expression tag	UNP Q9RZA4
B	-4	MET	-	expression tag	UNP Q9RZA4
B	-3	GLY	-	expression tag	UNP Q9RZA4
B	-2	ARG	-	expression tag	UNP Q9RZA4
B	-1	GLY	-	expression tag	UNP Q9RZA4
B	0	SER	-	expression tag	UNP Q9RZA4
B	322	LEU	-	expression tag	UNP Q9RZA4
B	323	GLU	-	expression tag	UNP Q9RZA4
B	324	HIS	-	expression tag	UNP Q9RZA4
B	325	HIS	-	expression tag	UNP Q9RZA4
B	326	HIS	-	expression tag	UNP Q9RZA4
B	327	HIS	-	expression tag	UNP Q9RZA4
B	328	HIS	-	expression tag	UNP Q9RZA4
B	329	HIS	-	expression tag	UNP Q9RZA4

- Molecule 2 is 3-[2-[(Z)-[3-(2-carboxyethyl)-5-[(Z)-(4-ethenyl-3-methyl-5-oxidanylidene-pyrro-1-2-ylidene)methyl]-4-methyl-pyrrol-1-ium -2-ylidene]methyl]-5-[(Z)-[(3E)-3-ethylidene-4-methyl-5-oxidanylidene-pyrrolidin-2-ylidene]methyl]-4-methyl-1H-pyrrol-3-yl]propanoic acid (CCD ID: LBV) (formula: C₃₃H₃₇N₄O₆) (labeled as "Ligand of Interest" by depositor).



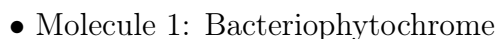
Mol	Chain	Residues	Atoms				ZeroOcc	AltConf
2	A	1	Total 43	C 33	N 4	O 6	0	0
2	B	1	Total 43	C 33	N 4	O 6	0	0

- Molecule 3 is water.

Mol	Chain	Residues	Atoms		ZeroOcc	AltConf
3	A	181	Total 181	O 181	0	0
3	B	105	Total 105	O 105	0	0

i

- Molecule 1: Bacteriophytochrome



4 Data and refinement statistics

Property	Value	Source
Space group	P 21 21 21	Depositor
Cell constants a, b, c, α , β , γ	54.95Å 116.50Å 117.70Å 90.00° 90.00° 90.00°	Depositor
Resolution (Å)	10.00 – 2.12 10.00 – 2.12	Depositor EDS
% Data completeness (in resolution range)	93.9 (10.00-2.12) 92.8 (10.00-2.12)	Depositor EDS
R_{merge}	(Not available)	Depositor
R_{sym}	(Not available)	Depositor
$\langle I/\sigma(I) \rangle$ ¹	1.25 (at 2.11Å)	Xtriage
Refinement program	PHENIX (1.20.1_4487: ???)	Depositor
R, R_{free}	0.201 , 0.207 0.201 , 0.207	Depositor DCC
R_{free} test set	1913 reflections (4.38%)	wwPDB-VP
Wilson B-factor (Å ²)	31.8	Xtriage
Anisotropy	0.080	Xtriage
Bulk solvent k_{sol} (e/Å ³), B_{sol} (Å ²)	0.00 , 163.8	EDS
L-test for twinning ²	$\langle L \rangle = 0.49$, $\langle L^2 \rangle = 0.33$	Xtriage
Estimated twinning fraction	0.014 for -h,l,k	Xtriage
F_o, F_c correlation	0.96	EDS
Total number of atoms	5231	wwPDB-VP
Average B, all atoms (Å ²)	41.0	wwPDB-VP

Xtriage's analysis on translational NCS is as follows: *The largest off-origin peak in the Patterson function is 5.29% of the height of the origin peak. No significant pseudotranslation is detected.*

¹Intensities estimated from amplitudes.

²Theoretical values of $\langle |L| \rangle$, $\langle L^2 \rangle$ for acentric reflections are 0.5, 0.333 respectively for untwinned datasets, and 0.375, 0.2 for perfectly twinned datasets.

5 Model quality

5.1 Standard geometry

Bond lengths and bond angles in the following residue types are not validated in this section: LBV

The Z score for a bond length (or angle) is the number of standard deviations the observed value is removed from the expected value. A bond length (or angle) with $|Z| > 5$ is considered an outlier worth inspection. RMSZ is the root-mean-square of all Z scores of the bond lengths (or angles).

Mol	Chain	Bond lengths		Bond angles	
		RMSZ	$\# Z > 5$	RMSZ	$\# Z > 5$
1	A	0.64	0/2515	0.93	2/3444 (0.1%)
1	B	0.59	0/2471	0.92	0/3381
All	All	0.61	0/4986	0.92	2/6825 (0.0%)

Chiral center outliers are detected by calculating the chiral volume of a chiral center and verifying if the center is modelled as a planar moiety or with the opposite hand. A planarity outlier is detected by checking planarity of atoms in a peptide group, atoms in a mainchain group or atoms of a sidechain that are expected to be planar.

Mol	Chain	#Chirality outliers	#Planarity outliers
1	A	0	1
1	B	0	2
All	All	0	3

There are no bond length outliers.

All (2) bond angle outliers are listed below:

Mol	Chain	Res	Type	Atoms	Z	Observed($^{\circ}$)	Ideal($^{\circ}$)
1	A	10	PRO	N-CA-CB	6.00	106.55	103.19
1	A	151	PRO	CB-CA-C	-5.16	104.58	112.11

There are no chirality outliers.

All (3) planarity outliers are listed below:

Mol	Chain	Res	Type	Group
1	A	191	ARG	Sidechain
1	B	192	ARG	Sidechain
1	B	218	ARG	Sidechain

5.2 Too-close contacts ⓘ

In the following table, the Non-H and H(model) columns list the number of non-hydrogen atoms and hydrogen atoms in the chain respectively. The H(added) column lists the number of hydrogen atoms added and optimized by MolProbity. The Clashes column lists the number of clashes within the asymmetric unit, whereas Symm-Clashes lists symmetry-related clashes.

Mol	Chain	Non-H	H(model)	H(added)	Clashes	Symm-Clashes
1	A	2451	0	2453	17	0
1	B	2408	0	2409	34	0
2	A	43	0	33	3	0
2	B	43	0	33	1	0
3	A	181	0	0	6	0
3	B	105	0	0	8	0
All	All	5231	0	4928	51	0

The all-atom clashscore is defined as the number of clashes found per 1000 atoms (including hydrogen atoms). The all-atom clashscore for this structure is 5.

All (51) close contacts within the same asymmetric unit are listed below, sorted by their clash magnitude.

Atom-1	Atom-2	Interatomic distance (Å)	Clash overlap (Å)
1:B:307[B]:TYR:CE2	1:B:311:LEU:HD11	2.08	0.88
1:A:228:ARG:NH2	3:A:501:HOH:O	2.15	0.79
1:B:242:THR:O	3:B:501:HOH:O	2.02	0.78
1:A:221:LEU:HD12	1:A:275:VAL:HG22	1.73	0.69
1:B:221:LEU:HD12	1:B:275:VAL:HG22	1.75	0.67
1:B:323:GLU:OE2	3:B:504:HOH:O	2.16	0.62
1:B:307[B]:TYR:HE2	1:B:311:LEU:HD11	1.61	0.62
1:B:154:ARG:HH12	1:B:187:ILE:HB	1.67	0.60
1:B:307[B]:TYR:CE2	1:B:311:LEU:CD1	2.83	0.59
1:B:9:PHE:CD2	1:B:17:PRO:HG2	2.37	0.58
1:A:274:SER:HA	1:A:287:ILE:O	2.04	0.57
1:A:307[B]:TYR:CE2	1:A:311:LEU:HD22	2.39	0.57
1:B:290:HIS:HD2	3:B:502:HOH:O	1.91	0.54
1:B:154:ARG:NH1	1:B:187:ILE:O	2.41	0.53
1:B:172:ARG:NH1	1:B:196:HIS:O	2.33	0.53
1:B:322:LEU:C	1:B:322:LEU:HD12	2.33	0.53
1:B:73:THR:HG22	1:B:75:ALA:HB3	1.91	0.52
1:B:307[B]:TYR:OH	1:B:311:LEU:HD21	2.09	0.52
1:A:228:ARG:HD3	3:A:669:HOH:O	2.12	0.50
1:B:176:TYR:CZ	1:B:184:GLY:HA3	2.47	0.49
1:A:203:PHE:CD2	2:A:401:LBV:HAD1	2.47	0.48

Continued on next page...

Continued from previous page...

Atom-1	Atom-2	Interatomic distance (Å)	Clash overlap (Å)
1:B:178:PHE:HE1	1:B:208:ILE:HD12	1.78	0.48
1:B:274:SER:HA	1:B:287:ILE:O	2.13	0.47
1:B:64:GLN:HG3	1:B:69:LEU:HD21	1.97	0.47
1:B:12:LEU:O	1:B:15:GLY:N	2.49	0.46
1:B:108:ALA:O	1:B:109:GLY:C	2.59	0.46
1:B:19:ILE:HG13	1:B:27:GLU:HG3	1.97	0.46
1:B:244:ALA:HB1	1:B:245:PRO:CD	2.46	0.45
1:A:259:MET:HE2	2:A:401:LBV:HBA2	1.99	0.45
1:B:259:MET:HE2	1:B:259:MET:HB2	1.76	0.45
1:A:176:TYR:CZ	1:A:184:GLY:HA3	2.53	0.44
1:B:290:HIS:HE1	3:B:558:HOH:O	2.00	0.44
1:B:176:TYR:OH	3:B:503:HOH:O	2.14	0.44
1:A:150:ALA:O	1:A:319:LYS:HE2	2.19	0.43
1:A:202:ARG:NE	3:A:505:HOH:O	2.27	0.43
1:B:259:MET:N	3:B:509:HOH:O	2.39	0.42
1:B:271:SER:HB3	1:B:291:HIS:HB3	2.02	0.42
1:B:172:ARG:NE	3:B:502:HOH:O	2.09	0.42
1:A:323:GLU:OE2	3:A:503:HOH:O	2.22	0.42
1:A:201:HIS:CD2	1:A:201:HIS:N	2.88	0.42
1:A:199:LEU:O	1:A:201:HIS:HD2	2.02	0.42
1:A:72:GLN:OE1	1:A:77[B]:LEU:HD21	2.20	0.42
1:A:228:ARG:CZ	3:A:501:HOH:O	2.63	0.41
1:B:82:TRP:N	1:B:83:PRO:CD	2.83	0.41
1:B:257:SER:N	3:B:514:HOH:O	2.54	0.41
1:A:129:THR:OG1	3:A:502:HOH:O	2.17	0.40
1:B:143:ALA:HB1	1:B:163:THR:HG21	2.03	0.40
1:B:176:TYR:CE1	1:B:184:GLY:HA3	2.56	0.40
1:A:203:PHE:CE2	2:A:401:LBV:HAD1	2.56	0.40
1:B:182:ALA:O	1:B:205:ALA:HA	2.21	0.40
1:B:216:TYR:HE2	2:B:401:LBV:HAC1	1.87	0.40

There are no symmetry-related clashes.

5.3 Torsion angles ⓘ

5.3.1 Protein backbone ⓘ

In the following table, the Percentiles column shows the percent Ramachandran outliers of the chain as a percentile score with respect to all X-ray entries followed by that with respect to entries of similar resolution.

The Analysed column shows the number of residues for which the backbone conformation was analysed, and the total number of residues.

Mol	Chain	Analysed	Favoured	Allowed	Outliers	Percentiles	
1	A	316/343 (92%)	311 (98%)	4 (1%)	1 (0%)	36	36
1	B	311/343 (91%)	297 (96%)	13 (4%)	1 (0%)	36	36
All	All	627/686 (91%)	608 (97%)	17 (3%)	2 (0%)	36	36

All (2) Ramachandran outliers are listed below:

Mol	Chain	Res	Type
1	A	323	GLU
1	B	109	GLY

5.3.2 Protein sidechains ⓘ

In the following table, the Percentiles column shows the percent sidechain outliers of the chain as a percentile score with respect to all X-ray entries followed by that with respect to entries of similar resolution.

The Analysed column shows the number of residues for which the sidechain conformation was analysed, and the total number of residues.

Mol	Chain	Analysed	Rotameric	Outliers	Percentiles	
1	A	259/275 (94%)	250 (96%)	9 (4%)	32	34
1	B	253/275 (92%)	248 (98%)	5 (2%)	48	55
All	All	512/550 (93%)	498 (97%)	14 (3%)	38	44

All (14) residues with a non-rotameric sidechain are listed below:

Mol	Chain	Res	Type
1	A	21	THR
1	A	29	ILE
1	A	60	THR
1	A	64	GLN
1	A	130	GLU
1	A	272	SER
1	A	293	THR
1	A	311	LEU
1	A	324	HIS
1	B	73	THR
1	B	130	GLU

Continued on next page...

Continued from previous page...

Mol	Chain	Res	Type
1	B	192	ARG
1	B	222	ARG
1	B	322	LEU

Sometimes sidechains can be flipped to improve hydrogen bonding and reduce clashes. All (6) such sidechains are listed below:

Mol	Chain	Res	Type
1	A	81	GLN
1	A	292	GLN
1	B	162	GLN
1	B	201	HIS
1	B	239	ASN
1	B	290	HIS

5.3.3 RNA [i](#)

There are no RNA molecules in this entry.

5.4 Non-standard residues in protein, DNA, RNA chains [i](#)

There are no non-standard protein/DNA/RNA residues in this entry.

5.5 Carbohydrates [i](#)

There are no oligosaccharides in this entry.

5.6 Ligand geometry [i](#)

2 ligands are modelled in this entry.

In the following table, the Counts columns list the number of bonds (or angles) for which Mogul statistics could be retrieved, the number of bonds (or angles) that are observed in the model and the number of bonds (or angles) that are defined in the Chemical Component Dictionary. The Link column lists molecule types, if any, to which the group is linked. The Z score for a bond length (or angle) is the number of standard deviations the observed value is removed from the expected value. A bond length (or angle) with $|Z| > 2$ is considered an outlier worth inspection. RMSZ is the root-mean-square of all Z scores of the bond lengths (or angles).

Mol	Type	Chain	Res	Link	Bond lengths			Bond angles		
					Counts	RMSZ	# Z > 2	Counts	RMSZ	# Z > 2
2	LBV	A	401	1	46,46,46	1.13	4 (8%)	58,67,67	1.68	17 (29%)
2	LBV	B	401	1	46,46,46	0.99	2 (4%)	58,67,67	1.50	11 (18%)

In the following table, the Chirals column lists the number of chiral outliers, the number of chiral centers analysed, the number of these observed in the model and the number defined in the Chemical Component Dictionary. Similar counts are reported in the Torsion and Rings columns. '-' means no outliers of that kind were identified.

Mol	Type	Chain	Res	Link	Chirals	Torsions	Rings
2	LBV	A	401	1	-	10/26/74/74	0/4/4/4
2	LBV	B	401	1	-	7/26/74/74	0/4/4/4

All (6) bond length outliers are listed below:

Mol	Chain	Res	Type	Atoms	Z	Observed(Å)	Ideal(Å)
2	A	401	LBV	C1D-C2D	2.57	1.49	1.45
2	B	401	LBV	C1D-C2D	2.28	1.49	1.45
2	A	401	LBV	C4B-N_B	2.28	1.41	1.37
2	A	401	LBV	CHD-C4C	2.16	1.45	1.40
2	B	401	LBV	C2C-C3C	2.15	1.41	1.36
2	A	401	LBV	C4A-C3A	2.08	1.48	1.45

All (28) bond angle outliers are listed below:

Mol	Chain	Res	Type	Atoms	Z	Observed(°)	Ideal(°)
2	B	401	LBV	CAA-C3A-C4A	-5.18	120.11	126.36
2	A	401	LBV	CAA-C3A-C4A	-3.67	121.93	126.36
2	A	401	LBV	CHD-C4C-C3C	3.66	134.28	124.87
2	B	401	LBV	CHD-C4C-C3C	3.41	133.62	124.87
2	A	401	LBV	C1B-CHB-C4A	3.33	140.41	130.82
2	A	401	LBV	CBC-CAC-C2C	3.25	121.51	112.53
2	A	401	LBV	CHD-C4C-N_C	-3.01	118.44	124.95
2	A	401	LBV	O1C-CGC-CBC	2.97	123.39	114.00
2	A	401	LBV	C4B-CHC-C1C	2.91	134.57	128.22
2	A	401	LBV	O1C-CGC-O2C	-2.77	116.20	123.33
2	A	401	LBV	O2B-CGB-O1B	-2.73	116.31	123.33
2	B	401	LBV	O_A-C1A-C2A	2.64	129.54	126.74
2	A	401	LBV	C2C-C1C-N_C	-2.55	106.44	110.04
2	B	401	LBV	CHD-C4C-N_C	-2.52	119.52	124.95
2	A	401	LBV	CAC-C2C-C3C	-2.43	123.31	127.87
2	A	401	LBV	CAC-C2C-C1C	2.41	129.25	125.02

Continued on next page...

Continued from previous page...

Mol	Chain	Res	Type	Atoms	Z	Observed(°)	Ideal(°)
2	B	401	LBV	O2B-CGB-CBB	2.40	121.59	114.00
2	A	401	LBV	CMC-C3C-C4C	2.34	128.74	125.10
2	B	401	LBV	C1C-N_C-C4C	2.31	110.76	106.52
2	A	401	LBV	C1C-N_C-C4C	2.28	110.71	106.52
2	B	401	LBV	CBC-CAC-C2C	2.25	118.76	112.53
2	B	401	LBV	C2C-C1C-N_C	-2.23	106.88	110.04
2	A	401	LBV	O2B-CGB-CBB	2.21	120.98	114.00
2	B	401	LBV	C4B-CHC-C1C	2.18	132.98	128.22
2	B	401	LBV	O1C-CGC-O2C	-2.12	117.88	123.33
2	A	401	LBV	CAC-CBC-CGC	2.10	119.24	113.67
2	B	401	LBV	O_A-C1A-N_A	-2.02	122.55	124.93
2	A	401	LBV	CAB-CBB-CGB	2.00	118.98	113.67

There are no chirality outliers.

All (17) torsion outliers are listed below:

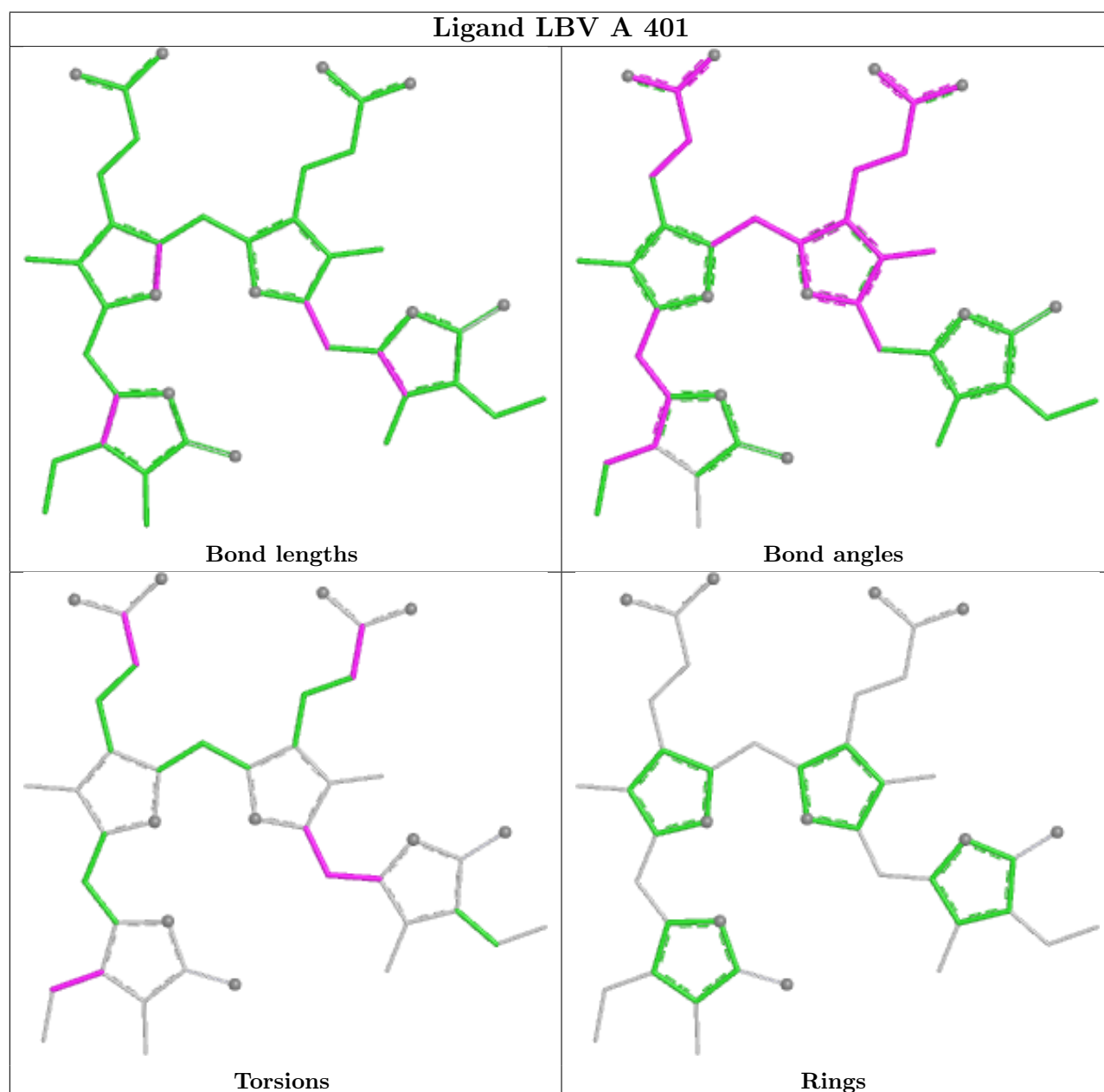
Mol	Chain	Res	Type	Atoms
2	A	401	LBV	C2D-C1D-CHD-C4C
2	A	401	LBV	C2A-C3A-CAA-CBA
2	A	401	LBV	C3C-C4C-CHD-C1D
2	B	401	LBV	C2A-C3A-CAA-CBA
2	A	401	LBV	N_D-C1D-CHD-C4C
2	B	401	LBV	C2D-C1D-CHD-C4C
2	B	401	LBV	N_D-C1D-CHD-C4C
2	A	401	LBV	N_C-C4C-CHD-C1D
2	B	401	LBV	N_C-C4C-CHD-C1D
2	B	401	LBV	C3C-C4C-CHD-C1D
2	A	401	LBV	C4A-C3A-CAA-CBA
2	B	401	LBV	CAC-CBC-CGC-O1C
2	A	401	LBV	CAC-CBC-CGC-O2C
2	B	401	LBV	CAC-CBC-CGC-O2C
2	A	401	LBV	CAC-CBC-CGC-O1C
2	A	401	LBV	CAB-CBB-CGB-O2B
2	A	401	LBV	CAB-CBB-CGB-O1B

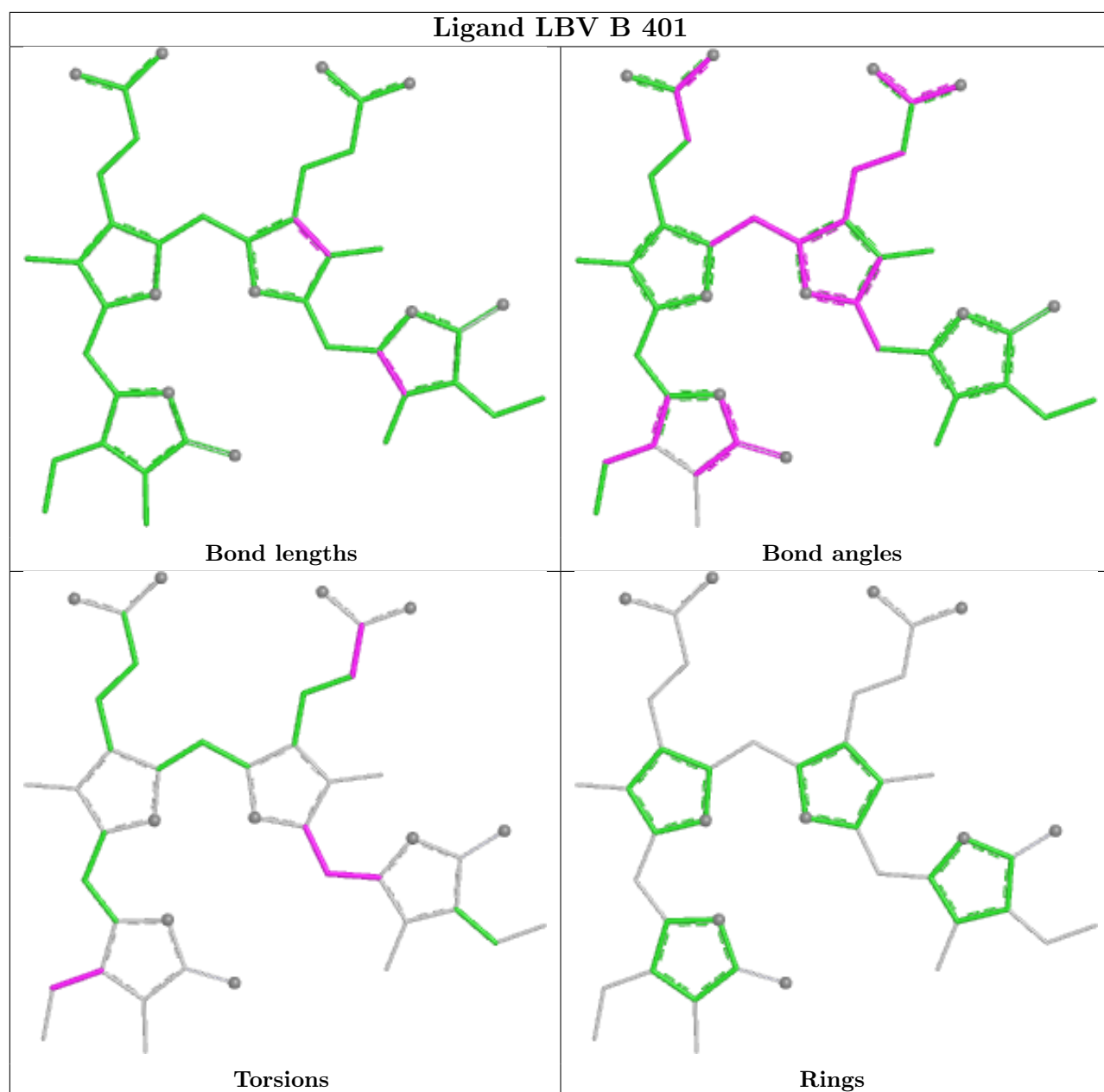
There are no ring outliers.

2 monomers are involved in 4 short contacts:

Mol	Chain	Res	Type	Clashes	Symm-Clashes
2	A	401	LBV	3	0
2	B	401	LBV	1	0

The following is a two-dimensional graphical depiction of Mogul quality analysis of bond lengths, bond angles, torsion angles, and ring geometry for all instances of the Ligand of Interest. In addition, ligands with molecular weight > 250 and outliers as shown on the validation Tables will also be included. For torsion angles, if less than 5% of the Mogul distribution of torsion angles is within 10 degrees of the torsion angle in question, then that torsion angle is considered an outlier. Any bond that is central to one or more torsion angles identified as an outlier by Mogul will be highlighted in the graph. For rings, the root-mean-square deviation (RMSD) between the ring in question and similar rings identified by Mogul is calculated over all ring torsion angles. If the average RMSD is greater than 60 degrees and the minimal RMSD between the ring in question and any Mogul-identified rings is also greater than 60 degrees, then that ring is considered an outlier. The outliers are highlighted in purple. The color gray indicates Mogul did not find sufficient equivalents in the CSD to analyse the geometry.





5.7 Other polymers [i](#)

There are no such residues in this entry.

5.8 Polymer linkage issues [i](#)

There are no chain breaks in this entry.

6 Fit of model and data [i](#)

6.1 Protein, DNA and RNA chains [i](#)

In the following table, the column labelled ‘#RSRZ > 2’ contains the number (and percentage) of RSRZ outliers, followed by percent RSRZ outliers for the chain as percentile scores relative to all X-ray entries and entries of similar resolution. The OWAB column contains the minimum, median, 95th percentile and maximum values of the occupancy-weighted average B-factor per residue. The column labelled ‘Q < 0.9’ lists the number of (and percentage) of residues with an average occupancy less than 0.9.

Mol	Chain	Analysed	<RSRZ>	#RSRZ>2	OWAB(Å ²)	Q<0.9
1	A	315/343 (91%)	-0.47	1 (0%) 90 91	13, 30, 66, 131	5 (1%)
1	B	313/343 (91%)	-0.21	3 (0%) 79 82	16, 42, 99, 142	2 (0%)
All	All	628/686 (91%)	-0.34	4 (0%) 85 87	13, 36, 87, 142	7 (1%)

All (4) RSRZ outliers are listed below:

Mol	Chain	Res	Type	RSRZ
1	B	68	VAL	2.2
1	A	205	ALA	2.1
1	B	205	ALA	2.1
1	B	67	THR	2.1

6.2 Non-standard residues in protein, DNA, RNA chains [i](#)

There are no non-standard protein/DNA/RNA residues in this entry.

6.3 Carbohydrates [i](#)

There are no oligosaccharides in this entry.

6.4 Ligands [i](#)

In the following table, the Atoms column lists the number of modelled atoms in the group and the number defined in the chemical component dictionary. The B-factors column lists the minimum, median, 95th percentile and maximum values of B factors of atoms in the group. The column labelled ‘Q < 0.9’ lists the number of atoms with occupancy less than 0.9.

Mol	Type	Chain	Res	Atoms	RSCC	RSR	B-factors(Å ²)	Q<0.9
2	LBV	B	401	43/43	0.83	0.10	21,40,54,63	0

Continued on next page...

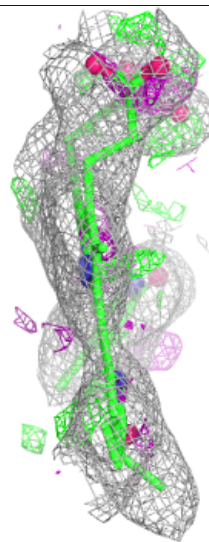
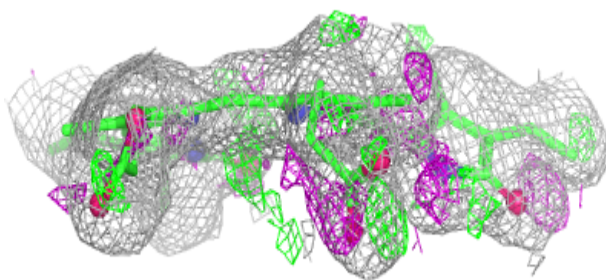
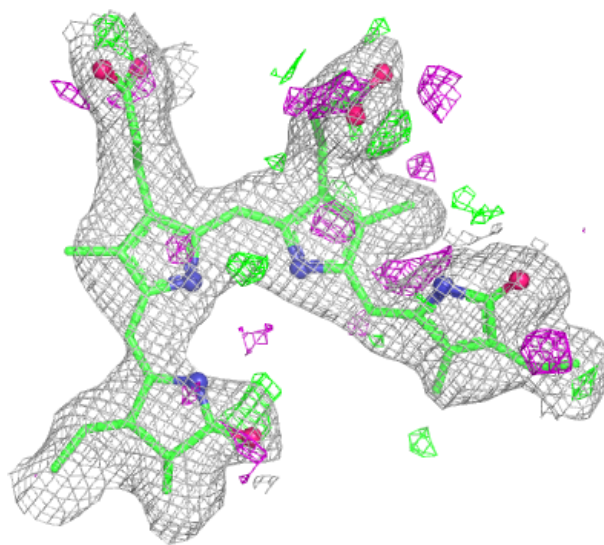
Continued from previous page...

Mol	Type	Chain	Res	Atoms	RSCC	RSR	B-factors(\AA^2)	Q<0.9
2	LBV	A	401	43/43	0.84	0.10	16,36,51,63	0

The following is a graphical depiction of the model fit to experimental electron density of all instances of the Ligand of Interest. In addition, ligands with molecular weight > 250 and outliers as shown on the geometry validation Tables will also be included. Each fit is shown from different orientation to approximate a three-dimensional view.

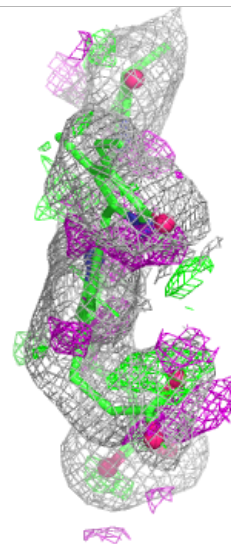
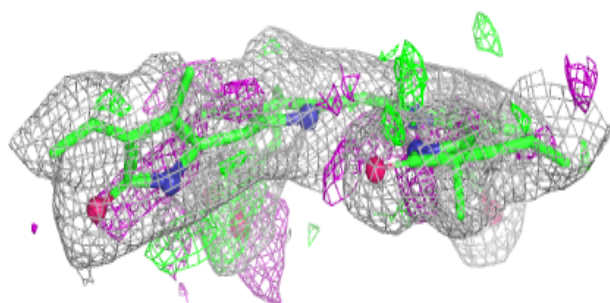
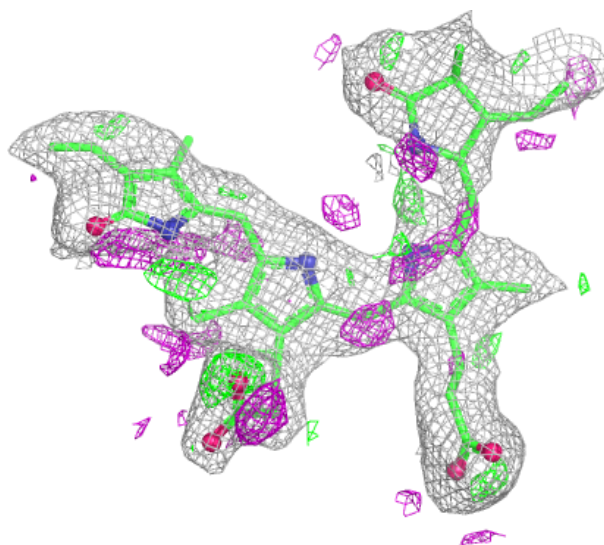
Electron density around LBV B 401:

2mF_o-DF_c (at 0.7 rmsd) in gray
mF_o-DF_c (at 3 rmsd) in purple (negative)
and green (positive)



Electron density around LBV A 401:

$2mF_o-DF_c$ (at 0.7 rmsd) in gray
 mF_o-DF_c (at 3 rmsd) in purple (negative)
and green (positive)



6.5 Other polymers [i](#)

There are no such residues in this entry.