



# Full wwPDB X-ray Structure Validation Report ⓘ

Mar 14, 2026 – 04:58 PM UTC

PDB ID : 9GPA / pdb\_00009gpa  
Title : ManDH5- a beta-D-Mannanase of GH5 family from Dictyoglomus thermophilum  
Authors : Sivron, Y.; Romano, A.; Shoham, Y.; Shoham, G.  
Deposited on : 2024-09-07  
Resolution : 1.50 Å(reported)

This is a Full wwPDB X-ray Structure Validation Report for a publicly released PDB entry.

We welcome your comments at [validation@mail.wwpdb.org](mailto:validation@mail.wwpdb.org)

A user guide is available at

<https://www.wwpdb.org/validation/2017/XrayValidationReportHelp>

with specific help available everywhere you see the ⓘ symbol.

The types of validation reports are described at

<http://www.wwpdb.org/validation/2017/FAQs#types>.

---

The following versions of software and data (see [references ⓘ](#)) were used in the production of this report:

MolProbity	:	4-5-2 with Phenix2.0
Mogul	:	2022.3.0, CSD as543be (2022)
Xtriage (Phenix)	:	2.0
EDS	:	3.0
Buster-report	:	wwPDB partial adaption of 1.1.7 (2018)
Percentile statistics	:	20250101.v01 (using entries in the PDB archive January 1st 2025)
CCP4	:	9.0.010 (Gargrove)
Density-Fitness	:	1.0.12
Ideal geometry (proteins)	:	Engh & Huber (2001)
Ideal geometry (DNA, RNA)	:	Parkinson et al. (1996)
Validation Pipeline (wwPDB-VP)	:	2.49

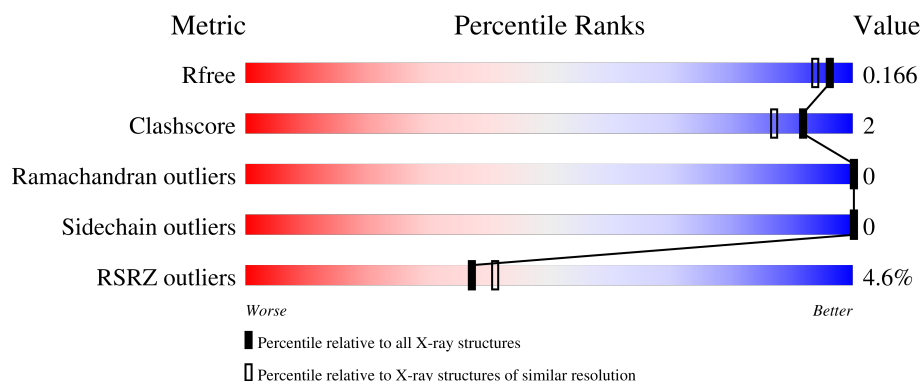
# 1 Overall quality at a glance

The following experimental techniques were used to determine the structure:

*X-RAY DIFFRACTION*

The reported resolution of this entry is 1.50 Å.

Percentile scores (ranging between 0-100) for global validation metrics of the entry are shown in the following graphic. The table shows the number of entries on which the scores are based.



Metric	Whole archive (#Entries)	Similar resolution (#Entries, resolution range(Å))
$R_{free}$	180053	4037 (1.50-1.50)
Clashscore	190562	4235 (1.50-1.50)
Ramachandran outliers	187476	4153 (1.50-1.50)
Sidechain outliers	187428	4150 (1.50-1.50)
RSRZ outliers	180081	4039 (1.50-1.50)

The table below summarises the geometric issues observed across the polymeric chains and their fit to the electron density. The red, orange, yellow and green segments of the lower bar indicate the fraction of residues that contain outliers for  $\geq 3$ , 2, 1 and 0 types of geometric quality criteria respectively. A grey segment represents the fraction of residues that are not modelled. The numeric value for each fraction is indicated below the corresponding segment, with a dot representing fractions  $\leq 5\%$ . The upper red bar (where present) indicates the fraction of residues that have poor fit to the electron density. The numeric value is given above the bar.

Mol	Chain	Length	Quality of chain
1	A	568	<div> <div>5%</div> <div>95%</div> <div>..</div> </div>

## 2 Entry composition [i](#)

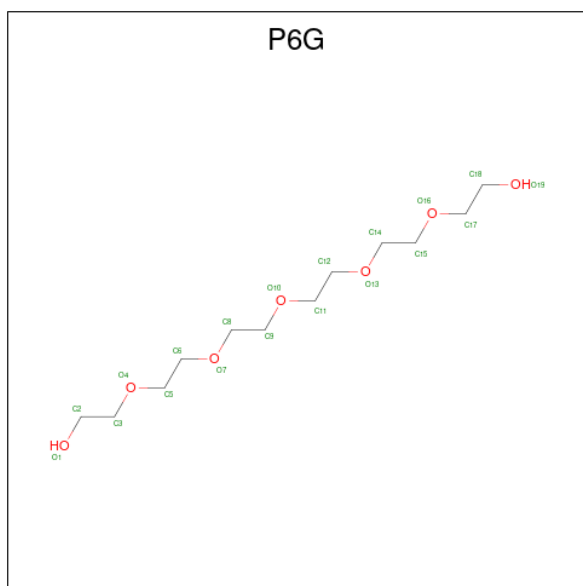
There are 8 unique types of molecules in this entry. The entry contains 9944 atoms, of which 4693 are hydrogens and 0 are deuteriums.

In the tables below, the ZeroOcc column contains the number of atoms modelled with zero occupancy, the AltConf column contains the number of residues with at least one atom in alternate conformation and the Trace column contains the number of residues modelled with at most 2 atoms.

- Molecule 1 is a protein called DUF5060 domain-containing protein.

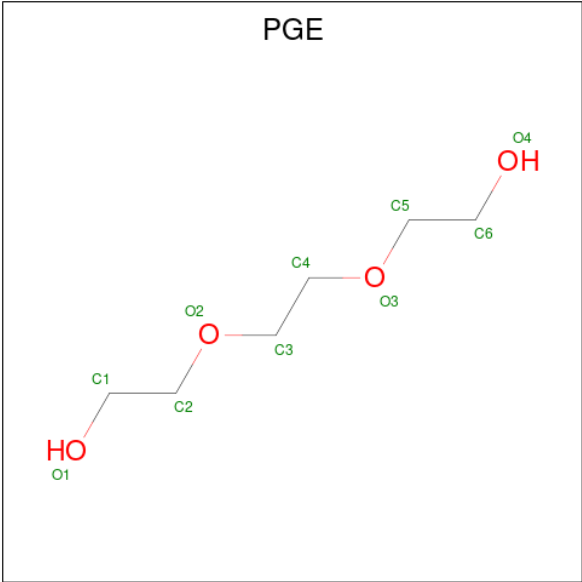
Mol	Chain	Residues	Atoms						ZeroOcc	AltConf	Trace
			Total	C	H	N	O	S			
1	A	564	9256	3107	4537	750	853	9	0	4	0

- Molecule 2 is HEXAETHYLENE GLYCOL (CCD ID: P6G) (formula: C<sub>12</sub>H<sub>26</sub>O<sub>7</sub>).



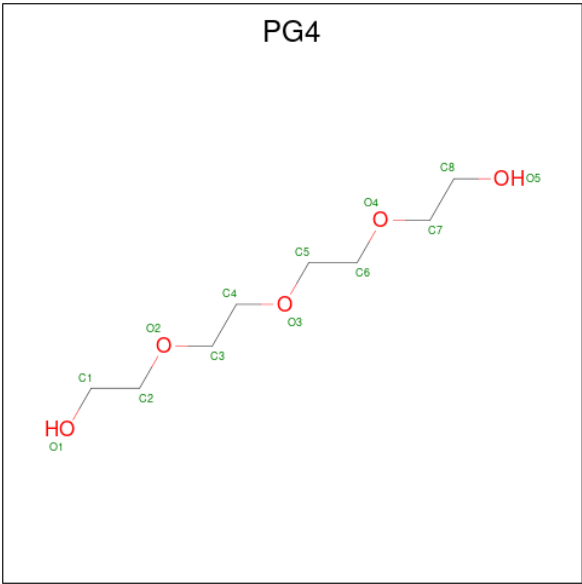
Mol	Chain	Residues	Atoms				ZeroOcc	AltConf
			Total	C	H	O		
2	A	1	45	12	26	7	0	0

- Molecule 3 is TRIETHYLENE GLYCOL (CCD ID: PGE) (formula: C<sub>6</sub>H<sub>14</sub>O<sub>4</sub>).



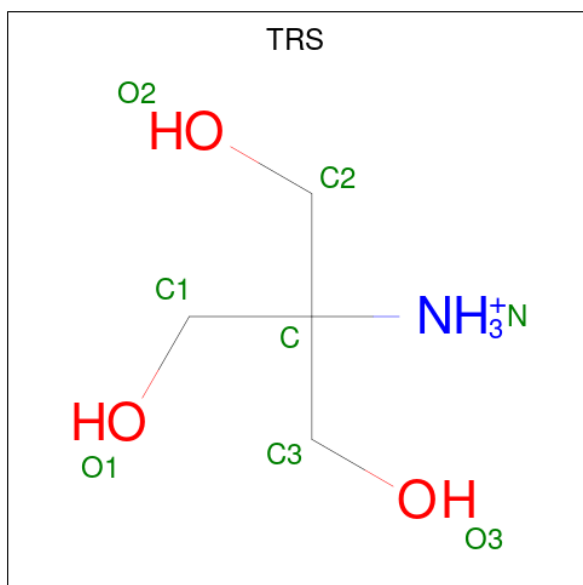
Mol	Chain	Residues	Atoms				ZeroOcc	AltConf
3	A	1	Total	C	H	O	0	0
			24	6	14	4		
3	A	1	Total	C	H	O	0	0
			24	6	14	4		
3	A	1	Total	C	H	O	0	0
			24	6	14	4		
3	A	1	Total	C	H	O	0	0
			24	6	14	4		

- Molecule 4 is TETRAETHYLENE GLYCOL (CCD ID: PG4) (formula: C<sub>8</sub>H<sub>18</sub>O<sub>5</sub>).



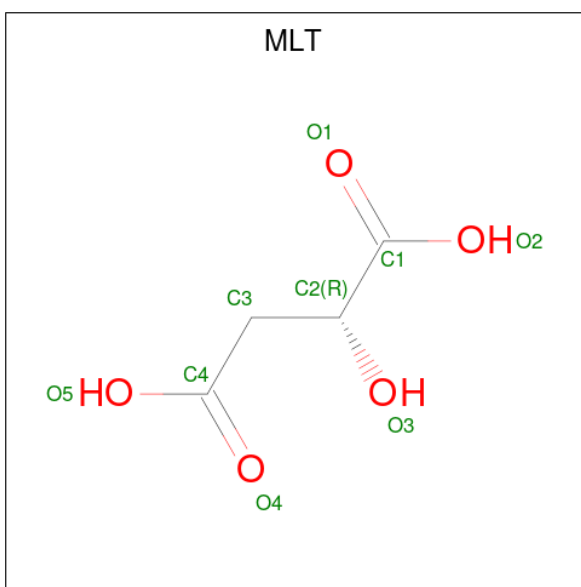
Mol	Chain	Residues	Atoms				ZeroOcc	AltConf
4	A	1	Total	C	H	O	0	0
			31	8	18	5		
4	A	1	Total	C	H	O	0	0
			31	8	18	5		

- Molecule 5 is 2-AMINO-2-HYDROXYMETHYL-PROPANE-1,3-DIOL (CCD ID: TRS) (formula:  $C_4H_{12}NO_3$ ).



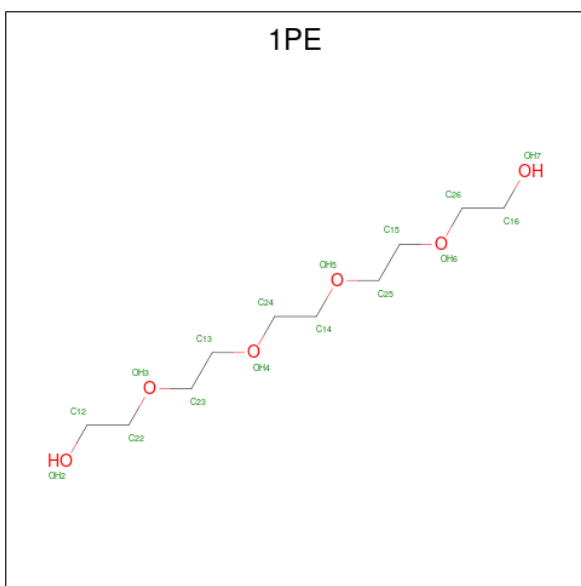
Mol	Chain	Residues	Atoms					ZeroOcc	AltConf
5	A	1	Total	C	H	N	O	0	0
			20	4	12	1	3		

- Molecule 6 is D-MALATE (CCD ID: MLT) (formula:  $C_4H_6O_5$ ).



Mol	Chain	Residues	Atoms				ZeroOcc	AltConf
6	A	1	Total	C	H	O	0	0
			13	4	4	5		

- Molecule 7 is PENTAETHYLENE GLYCOL (CCD ID: 1PE) (formula:  $C_{10}H_{22}O_6$ ).



Mol	Chain	Residues	Atoms				ZeroOcc	AltConf
7	A	1	Total	C	H	O	0	0
			38	10	22	6		

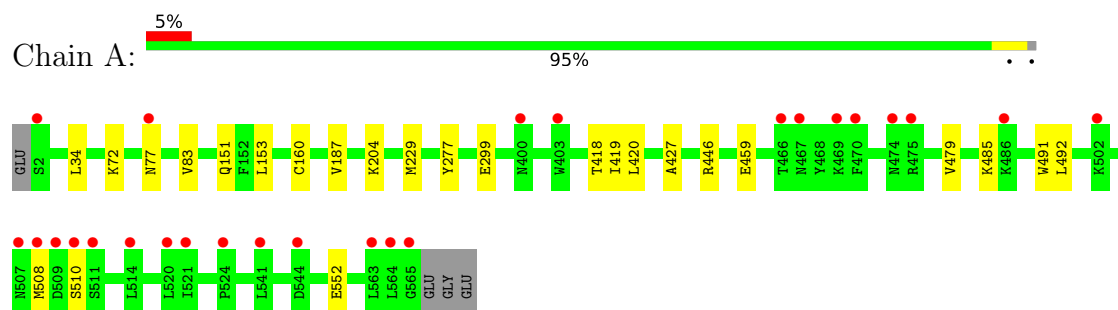
- Molecule 8 is water.

Mol	Chain	Residues	Atoms		ZeroOcc	AltConf
8	A	413	Total 414	O 414	0	1

### 3 Residue-property plots [i](#)

These plots are drawn for all protein, RNA, DNA and oligosaccharide chains in the entry. The first graphic for a chain summarises the proportions of the various outlier classes displayed in the second graphic. The second graphic shows the sequence view annotated by issues in geometry and electron density. Residues are color-coded according to the number of geometric quality criteria for which they contain at least one outlier: green = 0, yellow = 1, orange = 2 and red = 3 or more. A red dot above a residue indicates a poor fit to the electron density ( $RSRZ > 2$ ). Stretches of 2 or more consecutive residues without any outlier are shown as a green connector. Residues present in the sample, but not in the model, are shown in grey.

- Molecule 1: DUF5060 domain-containing protein





## 4 Data and refinement statistics

Property	Value	Source
Space group	I 2 2 2	Depositor
Cell constants a, b, c, $\alpha$ , $\beta$ , $\gamma$	94.65Å 99.26Å 153.28Å 90.00° 90.00° 90.00°	Depositor
Resolution (Å)	49.63 – 1.50 49.63 – 1.50	Depositor EDS
% Data completeness (in resolution range)	99.9 (49.63-1.50) 99.9 (49.63-1.50)	Depositor EDS
$R_{merge}$	(Not available)	Depositor
$R_{sym}$	(Not available)	Depositor
$\langle I/\sigma(I) \rangle$ <sup>1</sup>	2.49 (at 1.50Å)	Xtriage
Refinement program	PHENIX 1.14.3228_000	Depositor
R, $R_{free}$	0.144 , 0.161 0.151 , 0.166	Depositor DCC
$R_{free}$ test set	5961 reflections (1.51%)	wwPDB-VP
Wilson B-factor (Å <sup>2</sup> )	19.0	Xtriage
Anisotropy	0.619	Xtriage
Bulk solvent $k_{sol}$ (e/Å <sup>3</sup> ), $B_{sol}$ (Å <sup>2</sup> )	0.43 , 43.0	EDS
L-test for twinning <sup>2</sup>	$\langle  L  \rangle = 0.49$ , $\langle L^2 \rangle = 0.32$	Xtriage
Estimated twinning fraction	0.008 for k,h,-l	Xtriage
$F_o, F_c$ correlation	0.97	EDS
Total number of atoms	9944	wwPDB-VP
Average B, all atoms (Å <sup>2</sup> )	28.0	wwPDB-VP

Xtriage's analysis on translational NCS is as follows: *The largest off-origin peak in the Patterson function is 4.42% of the height of the origin peak. No significant pseudotranslation is detected.*

<sup>1</sup>Intensities estimated from amplitudes.

<sup>2</sup>Theoretical values of  $\langle |L| \rangle$ ,  $\langle L^2 \rangle$  for acentric reflections are 0.5, 0.333 respectively for untwinned datasets, and 0.375, 0.2 for perfectly twinned datasets.

## 5 Model quality [i](#)

### 5.1 Standard geometry [i](#)

Bond lengths and bond angles in the following residue types are not validated in this section: 1PE, P6G, TRS, PGE, MLT, PG4

The Z score for a bond length (or angle) is the number of standard deviations the observed value is removed from the expected value. A bond length (or angle) with  $|Z| > 5$  is considered an outlier worth inspection. RMSZ is the root-mean-square of all Z scores of the bond lengths (or angles).

Mol	Chain	Bond lengths		Bond angles	
		RMSZ	$\# Z  > 5$	RMSZ	$\# Z  > 5$
1	A	0.37	0/4883	0.61	0/6631

There are no bond length outliers.

There are no bond angle outliers.

There are no chirality outliers.

There are no planarity outliers.

### 5.2 Too-close contacts [i](#)

In the following table, the Non-H and H(model) columns list the number of non-hydrogen atoms and hydrogen atoms in the chain respectively. The H(added) column lists the number of hydrogen atoms added and optimized by MolProbity. The Clashes column lists the number of clashes within the asymmetric unit, whereas Symm-Clashes lists symmetry-related clashes.

Mol	Chain	Non-H	H(model)	H(added)	Clashes	Symm-Clashes
1	A	4719	4537	4518	15	3
2	A	19	26	26	0	0
3	A	40	56	56	0	0
4	A	26	36	36	0	0
5	A	8	12	12	0	0
6	A	9	4	4	0	0
7	A	16	22	22	0	0
8	A	414	0	0	2	0
All	All	5251	4693	4674	15	3

The all-atom clashscore is defined as the number of clashes found per 1000 atoms (including hydrogen atoms). The all-atom clashscore for this structure is 2.

All (15) close contacts within the same asymmetric unit are listed below, sorted by their clash

magnitude.

Atom-1	Atom-2	Interatomic distance (Å)	Clash overlap (Å)
1:A:420:LEU:HD12	1:A:491:TRP:HB2	1.87	0.57
1:A:479:VAL:HG23	1:A:492:LEU:HD23	1.89	0.54
1:A:418:THR:HG21	1:A:427:ALA:HB2	1.90	0.52
1:A:419:ILE:HG22	1:A:420:LEU:HD23	1.93	0.50
1:A:446[B]:ARG:NH2	8:A:706:HOH:O	2.45	0.49
1:A:160:CYS:HA	1:A:187:VAL:HA	1.95	0.48
1:A:34:LEU:C	1:A:34:LEU:HD12	2.38	0.47
1:A:510:SER:HB3	1:A:552:GLU:OE2	2.14	0.47
1:A:72:LYS:HB3	1:A:72:LYS:HE3	1.82	0.45
1:A:508:MET:O	1:A:508:MET:CG	2.64	0.45
1:A:229:MET:HE3	1:A:299:GLU:OE1	2.17	0.44
1:A:151[B]:GLN:HE22	1:A:153:LEU:HD13	1.83	0.44
1:A:83:VAL:HG23	8:A:722:HOH:O	2.18	0.42
1:A:204:LYS:HG2	1:A:277[A]:TYR:CZ	2.57	0.40

All (3) symmetry-related close contacts are listed below. The label for Atom-2 includes the symmetry operator and encoded unit-cell translations to be applied.

Atom-1	Atom-2	Interatomic distance (Å)	Clash overlap (Å)
1:A:77:ASN:H	1:A:459[B]:GLU:OE1[8_455]	1.46	0.14
1:A:77:ASN:N	1:A:459[B]:GLU:OE1[8_455]	2.07	0.13
1:A:77:ASN:H	1:A:459[A]:GLU:OE1[8_455]	1.49	0.11

## 5.3 Torsion angles [i](#)

### 5.3.1 Protein backbone [i](#)

In the following table, the Percentiles column shows the percent Ramachandran outliers of the chain as a percentile score with respect to all X-ray entries followed by that with respect to entries of similar resolution.

The Analysed column shows the number of residues for which the backbone conformation was analysed, and the total number of residues.

Mol	Chain	Analysed	Favoured	Allowed	Outliers	Percentiles	
1	A	566/568 (100%)	553 (98%)	13 (2%)	0	100	100

There are no Ramachandran outliers to report.

### 5.3.2 Protein sidechains [i](#)

In the following table, the Percentiles column shows the percent sidechain outliers of the chain as a percentile score with respect to all X-ray entries followed by that with respect to entries of similar resolution.

The Analysed column shows the number of residues for which the sidechain conformation was analysed, and the total number of residues.

Mol	Chain	Analysed	Rotameric	Outliers	Percentiles	
1	A	491/508 (97%)	491 (100%)	0	100	100

There are no protein residues with a non-rotameric sidechain to report.

Sometimes sidechains can be flipped to improve hydrogen bonding and reduce clashes. All (3) such sidechains are listed below:

Mol	Chain	Res	Type
1	A	11	ASN
1	A	35	GLN
1	A	329	ASN

### 5.3.3 RNA [i](#)

There are no RNA molecules in this entry.

## 5.4 Non-standard residues in protein, DNA, RNA chains [i](#)

There are no non-standard protein/DNA/RNA residues in this entry.

### 5.5 Carbohydrates [i](#)

There are no oligosaccharides in this entry.

## 5.6 Ligand geometry [i](#)

10 ligands are modelled in this entry.

In the following table, the Counts columns list the number of bonds (or angles) for which Mogul statistics could be retrieved, the number of bonds (or angles) that are observed in the model and the number of bonds (or angles) that are defined in the Chemical Component Dictionary. The Link column lists molecule types, if any, to which the group is linked. The Z score for a bond length (or angle) is the number of standard deviations the observed value is removed from the

expected value. A bond length (or angle) with  $|Z| > 2$  is considered an outlier worth inspection. RMSZ is the root-mean-square of all Z scores of the bond lengths (or angles).

Mol	Type	Chain	Res	Link	Bond lengths			Bond angles		
					Counts	RMSZ	$\# Z  > 2$	Counts	RMSZ	$\# Z  > 2$
7	1PE	A	610	-	15,15,15	0.58	0	14,14,14	0.38	0
6	MLT	A	609	-	8,8,8	1.10	0	10,10,10	1.54	2 (20%)
3	PGE	A	603	-	9,9,9	0.30	0	8,8,8	0.42	0
4	PG4	A	606	-	12,12,12	0.52	0	11,11,11	0.52	0
4	PG4	A	607	-	12,12,12	0.54	0	11,11,11	0.45	0
5	TRS	A	608	-	7,7,7	0.78	0	9,9,9	2.55	3 (33%)
3	PGE	A	602	-	9,9,9	0.39	0	8,8,8	0.50	0
3	PGE	A	605	-	9,9,9	0.34	0	8,8,8	0.30	0
2	P6G	A	601	-	18,18,18	0.57	0	17,17,17	0.59	0
3	PGE	A	604	-	9,9,9	0.31	0	8,8,8	0.41	0

In the following table, the Chirals column lists the number of chiral outliers, the number of chiral centers analysed, the number of these observed in the model and the number defined in the Chemical Component Dictionary. Similar counts are reported in the Torsion and Rings columns. '-' means no outliers of that kind were identified.

Mol	Type	Chain	Res	Link	Chirals	Torsions	Rings
7	1PE	A	610	-	-	8/13/13/13	-
6	MLT	A	609	-	-	3/8/8/8	-
3	PGE	A	603	-	-	0/7/7/7	-
4	PG4	A	606	-	-	5/10/10/10	-
4	PG4	A	607	-	-	1/10/10/10	-
5	TRS	A	608	-	-	2/9/9/9	-
3	PGE	A	602	-	-	3/7/7/7	-
3	PGE	A	605	-	-	4/7/7/7	-
2	P6G	A	601	-	-	4/16/16/16	-
3	PGE	A	604	-	-	3/7/7/7	-

There are no bond length outliers.

All (5) bond angle outliers are listed below:

Mol	Chain	Res	Type	Atoms	Z	Observed(°)	Ideal(°)
5	A	608	TRS	C3-C-C1	-4.51	98.63	110.66
5	A	608	TRS	C2-C-N	3.77	117.79	108.17
5	A	608	TRS	C1-C-N	3.59	117.33	108.17
6	A	609	MLT	O2-C1-C2	3.37	119.86	112.74
6	A	609	MLT	O2-C1-O1	-2.12	119.27	124.08

There are no chirality outliers.

All (33) torsion outliers are listed below:

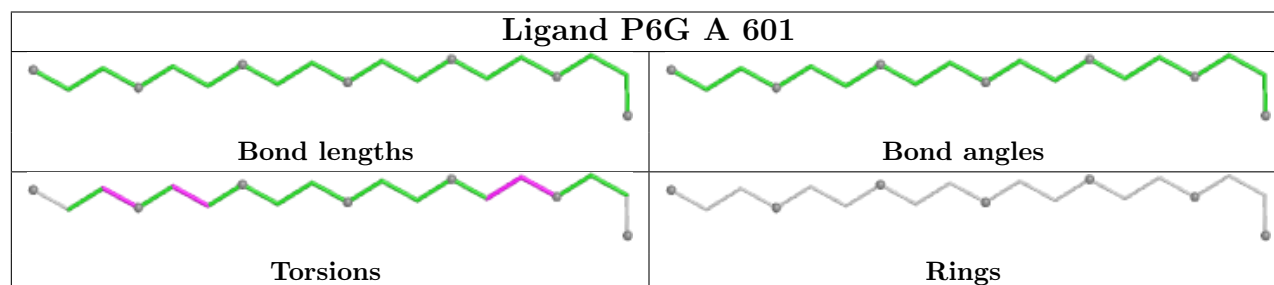
Mol	Chain	Res	Type	Atoms
6	A	609	MLT	O1-C1-C2-O3
6	A	609	MLT	O2-C1-C2-O3
7	A	610	1PE	OH4-C13-C23-OH3
7	A	610	1PE	OH5-C14-C24-OH4
4	A	606	PG4	O2-C3-C4-O3
7	A	610	1PE	OH6-C15-C25-OH5
3	A	605	PGE	O3-C5-C6-O4
4	A	606	PG4	O1-C1-C2-O2
7	A	610	1PE	OH7-C16-C26-OH6
4	A	607	PG4	O3-C5-C6-O4
3	A	605	PGE	O1-C1-C2-O2
4	A	606	PG4	O4-C7-C8-O5
3	A	602	PGE	O3-C5-C6-O4
2	A	601	P6G	O4-C5-C6-O7
3	A	605	PGE	O2-C3-C4-O3
3	A	604	PGE	C4-C3-O2-C2
7	A	610	1PE	C23-C13-OH4-C24
7	A	610	1PE	C25-C15-OH6-C26
2	A	601	P6G	C18-C17-O16-C15
7	A	610	1PE	C16-C26-OH6-C15
4	A	606	PG4	C4-C3-O2-C2
3	A	604	PGE	C1-C2-O2-C3
7	A	610	1PE	C24-C14-OH5-C25
3	A	605	PGE	C4-C3-O2-C2
3	A	602	PGE	C1-C2-O2-C3
2	A	601	P6G	C6-C5-O4-C3
3	A	604	PGE	O1-C1-C2-O2
5	A	608	TRS	C2-C-C3-O3
4	A	606	PG4	C5-C6-O4-C7
2	A	601	P6G	O13-C14-C15-O16
3	A	602	PGE	O1-C1-C2-O2
5	A	608	TRS	N-C-C1-O1
6	A	609	MLT	C2-C3-C4-O4

There are no ring outliers.

No monomer is involved in short contacts.

The following is a two-dimensional graphical depiction of Mogul quality analysis of bond lengths, bond angles, torsion angles, and ring geometry for all instances of the Ligand of Interest. In addition, ligands with molecular weight > 250 and outliers as shown on the validation Tables will also be included. For torsion angles, if less than 5% of the Mogul distribution of torsion angles is

within 10 degrees of the torsion angle in question, then that torsion angle is considered an outlier. Any bond that is central to one or more torsion angles identified as an outlier by Mogul will be highlighted in the graph. For rings, the root-mean-square deviation (RMSD) between the ring in question and similar rings identified by Mogul is calculated over all ring torsion angles. If the average RMSD is greater than 60 degrees and the minimal RMSD between the ring in question and any Mogul-identified rings is also greater than 60 degrees, then that ring is considered an outlier. The outliers are highlighted in purple. The color gray indicates Mogul did not find sufficient equivalents in the CSD to analyse the geometry.



## 5.7 Other polymers [i](#)

There are no such residues in this entry.

## 5.8 Polymer linkage issues [i](#)

There are no chain breaks in this entry.

## 6 Fit of model and data

### 6.1 Protein, DNA and RNA chains

In the following table, the column labelled ‘#RSRZ> 2’ contains the number (and percentage) of RSRZ outliers, followed by percent RSRZ outliers for the chain as percentile scores relative to all X-ray entries and entries of similar resolution. The OWAB column contains the minimum, median, 95<sup>th</sup> percentile and maximum values of the occupancy-weighted average B-factor per residue. The column labelled ‘Q< 0.9’ lists the number of (and percentage) of residues with an average occupancy less than 0.9.

Mol	Chain	Analysed	<RSRZ>	#RSRZ>2		OWAB(Å <sup>2</sup> )	Q<0.9
1	A	564/568 (99%)	-0.13	26 (4%)	37 41	13, 24, 47, 86	4 (0%)

All (26) RSRZ outliers are listed below:

Mol	Chain	Res	Type	RSRZ
1	A	509	ASP	4.9
1	A	403	TRP	4.8
1	A	565	GLY	4.4
1	A	564	LEU	4.3
1	A	474	ASN	3.9
1	A	508	MET	3.8
1	A	510	SER	3.7
1	A	521	ILE	3.7
1	A	511	SER	3.2
1	A	507	ASN	3.0
1	A	466	THR	3.0
1	A	77	ASN	2.9
1	A	563	LEU	2.9
1	A	470	PHE	2.8
1	A	400	ASN	2.7
1	A	467	ASN	2.5
1	A	502	LYS	2.5
1	A	475	ARG	2.4
1	A	520	LEU	2.4
1	A	524	PRO	2.3
1	A	541	LEU	2.3
1	A	469	LYS	2.2
1	A	486	LYS	2.2
1	A	544	ASP	2.2
1	A	514	LEU	2.1
1	A	2	SER	2.0



## 6.2 Non-standard residues in protein, DNA, RNA chains [i](#)

There are no non-standard protein/DNA/RNA residues in this entry.

## 6.3 Carbohydrates [i](#)

There are no oligosaccharides in this entry.

## 6.4 Ligands [i](#)

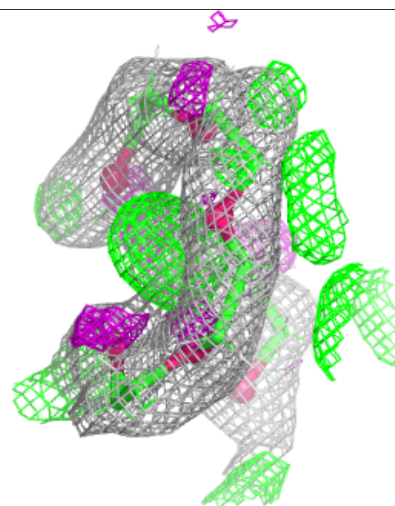
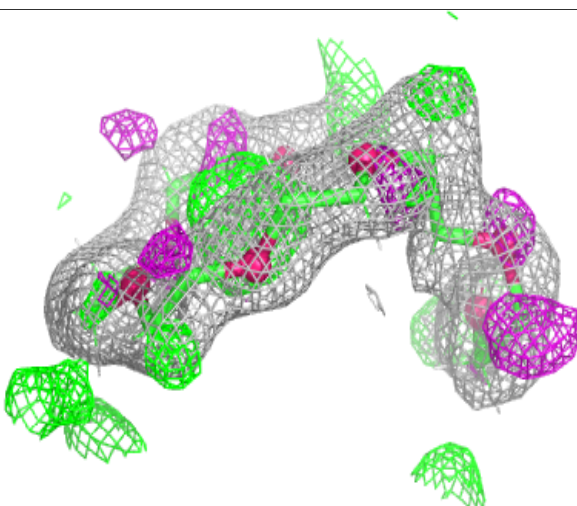
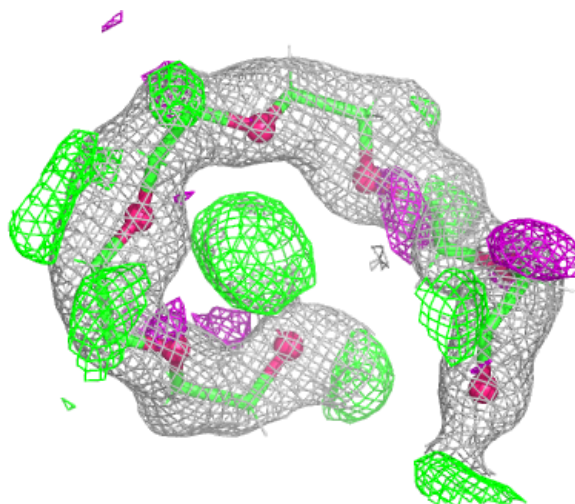
In the following table, the Atoms column lists the number of modelled atoms in the group and the number defined in the chemical component dictionary. The B-factors column lists the minimum, median, 95<sup>th</sup> percentile and maximum values of B factors of atoms in the group. The column labelled 'Q< 0.9' lists the number of atoms with occupancy less than 0.9.

Mol	Type	Chain	Res	Atoms	RSCC	RSR	B-factors( $\text{\AA}^2$ )	Q<0.9
3	PGE	A	605	10/10	0.75	0.20	45,54,56,57	0
6	MLT	A	609	9/9	0.76	0.17	54,55,66,66	0
4	PG4	A	606	13/13	0.82	0.17	43,52,56,57	0
7	1PE	A	610	16/16	0.83	0.17	48,58,60,61	0
2	P6G	A	601	19/19	0.85	0.14	32,41,49,50	0
3	PGE	A	602	10/10	0.86	0.14	45,56,60,60	0
3	PGE	A	604	10/10	0.90	0.12	41,50,55,57	0
4	PG4	A	607	13/13	0.90	0.12	36,46,57,59	0
3	PGE	A	603	10/10	0.94	0.08	33,40,45,48	0
5	TRS	A	608	8/8	0.96	0.07	17,23,27,29	0

The following is a graphical depiction of the model fit to experimental electron density of all instances of the Ligand of Interest. In addition, ligands with molecular weight > 250 and outliers as shown on the geometry validation Tables will also be included. Each fit is shown from different orientation to approximate a three-dimensional view.

**Electron density around P6G A 601:**

$2mF_o-DF_c$  (at 0.7 rmsd) in gray  
 $mF_o-DF_c$  (at 3 rmsd) in purple (negative)  
and green (positive)



## 6.5 Other polymers ⓘ

There are no such residues in this entry.