



Full wwPDB X-ray Structure Validation Report ⓘ

Mar 10, 2026 – 06:40 AM UTC

PDB ID : 9GP3 / pdb_00009gp3
Title : Crystal structure of CDK2-cyclin E1 bound by compound 11 (AZD8421)
Authors : Collie, G.W.; Pflug, A.
Deposited on : 2024-09-06
Resolution : 2.45 Å(reported)

This is a Full wwPDB X-ray Structure Validation Report for a publicly released PDB entry.

We welcome your comments at validation@mail.wwpdb.org

A user guide is available at

<https://www.wwpdb.org/validation/2017/XrayValidationReportHelp>

with specific help available everywhere you see the ⓘ symbol.

The types of validation reports are described at

<http://www.wwpdb.org/validation/2017/FAQs#types>.

The following versions of software and data (see [references ⓘ](#)) were used in the production of this report:

MolProbity : 4-5-2 with Phenix2.0
Mogul : 2022.3.0, CSD as543be (2022)
Xtriage (Phenix) : 2.0
EDS : 3.0
Buster-report : wwPDB partial adaption of 1.1.7 (2018)
Percentile statistics : 20250101.v01 (using entries in the PDB archive January 1st 2025)
CCP4 : 9.0.010 (Gargrove)
Density-Fitness : 1.0.12
Ideal geometry (proteins) : Engh & Huber (2001)
Ideal geometry (DNA, RNA) : Parkinson et al. (1996)
Validation Pipeline (wwPDB-VP) : 2.49

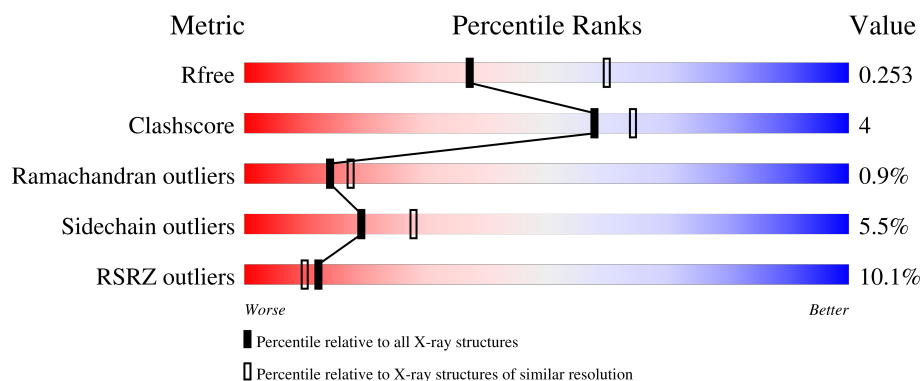
1 Overall quality at a glance

The following experimental techniques were used to determine the structure:

X-RAY DIFFRACTION

The reported resolution of this entry is 2.45 Å.

Percentile scores (ranging between 0-100) for global validation metrics of the entry are shown in the following graphic. The table shows the number of entries on which the scores are based.



Metric	Whole archive (#Entries)	Similar resolution (#Entries, resolution range(Å))
R_{free}	180053	1190 (2.46-2.46)
Clashscore	190562	1229 (2.46-2.46)
Ramachandran outliers	187476	1218 (2.46-2.46)
Sidechain outliers	187428	1218 (2.46-2.46)
RSRZ outliers	180081	1190 (2.46-2.46)

The table below summarises the geometric issues observed across the polymeric chains and their fit to the electron density. The red, orange, yellow and green segments of the lower bar indicate the fraction of residues that contain outliers for ≥ 3 , 2, 1 and 0 types of geometric quality criteria respectively. A grey segment represents the fraction of residues that are not modelled. The numeric value for each fraction is indicated below the corresponding segment, with a dot representing fractions $\leq 5\%$. The upper red bar (where present) indicates the fraction of residues that have poor fit to the electron density. The numeric value is given above the bar.

Mol	Chain	Length	Quality of chain
1	A	298	<div> <div>10%</div> <div>86%</div> <div>12%</div> <div>.</div> </div>
2	B	285	<div> <div>10%</div> <div>78%</div> <div>13%</div> <div>7%</div> </div>

2 Entry composition

There are 4 unique types of molecules in this entry. The entry contains 4590 atoms, of which 0 are hydrogens and 0 are deuteriums.

In the tables below, the ZeroOcc column contains the number of atoms modelled with zero occupancy, the AltConf column contains the number of residues with at least one atom in alternate conformation and the Trace column contains the number of residues modelled with at most 2 atoms.

- Molecule 1 is a protein called Cyclin-dependent kinase 2.

Mol	Chain	Residues	Atoms					ZeroOcc	AltConf	Trace
1	A	298	Total	C	N	O	S	0	0	0
			2374	1546	401	419	8			

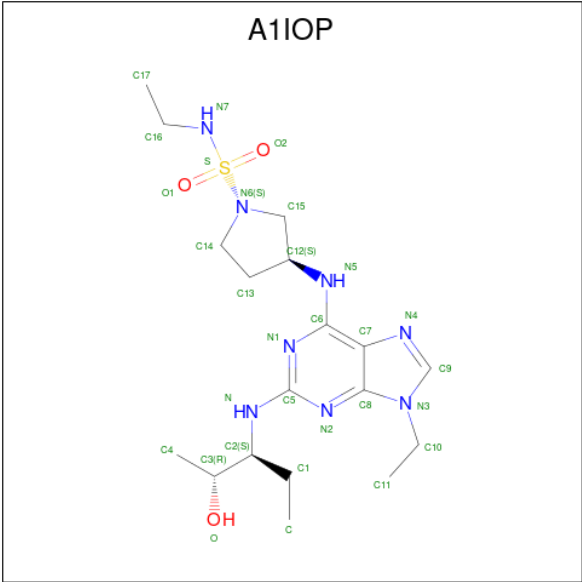
- Molecule 2 is a protein called G1/S-specific cyclin-E1.

Mol	Chain	Residues	Atoms					ZeroOcc	AltConf	Trace
2	B	266	Total	C	N	O	S	0	0	0
			2159	1403	352	387	17			

There are 2 discrepancies between the modelled and reference sequences:

Chain	Residue	Modelled	Actual	Comment	Reference
B	79	GLY	-	expression tag	UNP P24864
B	80	SER	-	expression tag	UNP P24864

- Molecule 3 is (3 {S})- {N}-ethyl-3-[[9-ethyl-2-[[[(2 {R}),3 {S})-2-oxidanylpentan-3-yl]amino]purin-6-yl]amino]pyrrolidine-1-sulfonamide (CCD ID: A1IOP) (formula: C₁₈H₃₂N₈O₃S) (labeled as "Ligand of Interest" by depositor).



Mol	Chain	Residues	Atoms					ZeroOcc	AltConf
3	A	1	Total	C	N	O	S	0	0
			30	18	8	3	1		

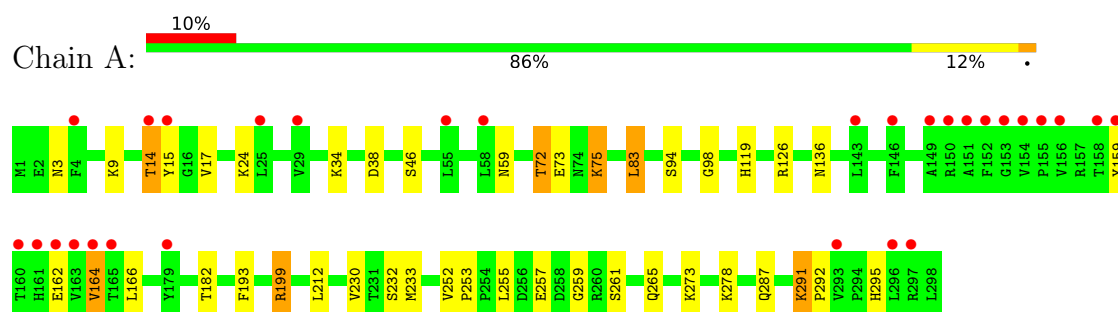
- Molecule 4 is water.

Mol	Chain	Residues	Atoms		ZeroOcc	AltConf
4	A	22	Total	O	0	0
			22	22		
4	B	5	Total	O	0	0
			5	5		

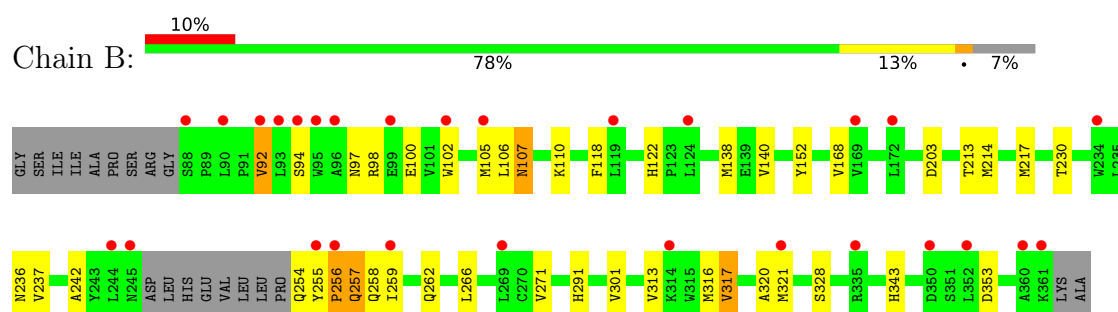
3 Residue-property plots [i](#)

These plots are drawn for all protein, RNA, DNA and oligosaccharide chains in the entry. The first graphic for a chain summarises the proportions of the various outlier classes displayed in the second graphic. The second graphic shows the sequence view annotated by issues in geometry and electron density. Residues are color-coded according to the number of geometric quality criteria for which they contain at least one outlier: green = 0, yellow = 1, orange = 2 and red = 3 or more. A red dot above a residue indicates a poor fit to the electron density ($RSRZ > 2$). Stretches of 2 or more consecutive residues without any outlier are shown as a green connector. Residues present in the sample, but not in the model, are shown in grey.

• Molecule 1: Cyclin-dependent kinase 2



• Molecule 2: G1/S-specific cyclin-E1



4 Data and refinement statistics

Property	Value	Source
Space group	P 41 21 2	Depositor
Cell constants a, b, c, α , β , γ	100.63Å 100.63Å 150.06Å 90.00° 90.00° 90.00°	Depositor
Resolution (Å)	83.58 – 2.45 83.58 – 2.45	Depositor EDS
% Data completeness (in resolution range)	76.7 (83.58-2.45) 76.7 (83.58-2.45)	Depositor EDS
R_{merge}	(Not available)	Depositor
R_{sym}	(Not available)	Depositor
$\langle I/\sigma(I) \rangle$ ¹	2.53 (at 2.45Å)	Xtriage
Refinement program	BUSTER 2.11.8	Depositor
R, R_{free}	0.233 , 0.273 (Not available) , 0.253	Depositor DCC
R_{free} test set	1026 reflections (3.54%)	wwPDB-VP
Wilson B-factor (Å ²)	71.2	Xtriage
Anisotropy	0.056	Xtriage
Bulk solvent k_{sol} (e/Å ³), B_{sol} (Å ²)	0.34 , 54.5	EDS
L-test for twinning ²	$\langle L \rangle = 0.50$, $\langle L^2 \rangle = 0.34$	Xtriage
Estimated twinning fraction	No twinning to report.	Xtriage
F_o, F_c correlation	0.94	EDS
Total number of atoms	4590	wwPDB-VP
Average B, all atoms (Å ²)	75.0	wwPDB-VP

Xtriage's analysis on translational NCS is as follows: *The largest off-origin peak in the Patterson function is 4.63% of the height of the origin peak. No significant pseudotranslation is detected.*

¹Intensities estimated from amplitudes.

²Theoretical values of $\langle |L| \rangle$, $\langle L^2 \rangle$ for acentric reflections are 0.5, 0.333 respectively for untwinned datasets, and 0.375, 0.2 for perfectly twinned datasets.

5 Model quality

5.1 Standard geometry

Bond lengths and bond angles in the following residue types are not validated in this section: A1IOP

The Z score for a bond length (or angle) is the number of standard deviations the observed value is removed from the expected value. A bond length (or angle) with $|Z| > 5$ is considered an outlier worth inspection. RMSZ is the root-mean-square of all Z scores of the bond lengths (or angles).

Mol	Chain	Bond lengths		Bond angles	
		RMSZ	$\# Z > 5$	RMSZ	$\# Z > 5$
1	A	0.69	0/2436	1.12	6/3310 (0.2%)
2	B	0.69	1/2210 (0.0%)	1.07	6/2997 (0.2%)
All	All	0.69	1/4646 (0.0%)	1.10	12/6307 (0.2%)

All (1) bond length outliers are listed below:

Mol	Chain	Res	Type	Atoms	Z	Observed(Å)	Ideal(Å)
2	B	317	VAL	CA-C	5.13	1.58	1.52

All (12) bond angle outliers are listed below:

Mol	Chain	Res	Type	Atoms	Z	Observed(°)	Ideal(°)
1	A	14	THR	CA-C-N	9.25	132.86	120.65
1	A	14	THR	C-N-CA	9.25	132.86	120.65
2	B	256	PRO	CA-C-N	6.59	129.01	120.44
2	B	256	PRO	C-N-CA	6.59	129.01	120.44
1	A	193	PHE	CA-CB-CG	6.57	120.37	113.80
1	A	253	PRO	N-CA-C	5.71	117.67	110.70
1	A	46	SER	CA-C-N	5.50	127.66	120.28
1	A	46	SER	C-N-CA	5.50	127.66	120.28
2	B	118	PHE	CA-CB-CG	5.31	119.11	113.80
2	B	94	SER	CA-C-N	5.16	127.19	120.28
2	B	94	SER	C-N-CA	5.16	127.19	120.28
2	B	257	GLN	N-CA-C	5.16	116.59	111.07

There are no chirality outliers.

There are no planarity outliers.

5.2 Too-close contacts ⓘ

In the following table, the Non-H and H(model) columns list the number of non-hydrogen atoms and hydrogen atoms in the chain respectively. The H(added) column lists the number of hydrogen atoms added and optimized by MolProbity. The Clashes column lists the number of clashes within the asymmetric unit, whereas Symm-Clashes lists symmetry-related clashes.

Mol	Chain	Non-H	H(model)	H(added)	Clashes	Symm-Clashes
1	A	2374	0	2409	13	0
2	B	2159	0	2151	29	0
3	A	30	0	0	0	0
4	A	22	0	0	0	0
4	B	5	0	0	0	0
All	All	4590	0	4560	41	0

The all-atom clashscore is defined as the number of clashes found per 1000 atoms (including hydrogen atoms). The all-atom clashscore for this structure is 4.

All (41) close contacts within the same asymmetric unit are listed below, sorted by their clash magnitude.

Atom-1	Atom-2	Interatomic distance (Å)	Clash overlap (Å)
2:B:321:MET:HA	2:B:321:MET:HE2	1.64	0.79
2:B:122:HIS:ND1	2:B:168:VAL:HG23	1.98	0.78
2:B:258:GLN:HE21	2:B:262:GLN:HE21	1.41	0.69
2:B:259:ILE:H	2:B:259:ILE:HD12	1.59	0.69
2:B:242:ALA:HB2	2:B:301:VAL:HG11	1.80	0.63
2:B:122:HIS:CE1	2:B:168:VAL:HG23	2.33	0.62
1:A:34:LYS:HE3	1:A:75:LYS:HD3	1.82	0.61
1:A:230:VAL:HA	1:A:233:MET:HE2	1.82	0.61
1:A:278:LYS:NZ	2:B:97:ASN:HB2	2.16	0.60
2:B:152:TYR:HB3	2:B:230:THR:HB	1.84	0.58
2:B:213:THR:HG22	2:B:217:MET:HE2	1.88	0.56
2:B:291:HIS:CE1	2:B:313:VAL:HG13	2.42	0.54
2:B:258:GLN:NE2	2:B:262:GLN:HE21	2.05	0.53
1:A:72:THR:HG22	1:A:75:LYS:HB2	1.91	0.53
1:A:291:LYS:HD3	1:A:292:PRO:HD2	1.92	0.52
1:A:83:LEU:HD23	1:A:136:ASN:HB3	1.92	0.51
1:A:255:LEU:HG	1:A:259:GLY:HA3	1.92	0.51
2:B:321:MET:HA	2:B:321:MET:CE	2.38	0.51
1:A:126:ARG:O	1:A:164:VAL:HB	2.11	0.50
2:B:291:HIS:CD2	2:B:320:ALA:CB	2.95	0.49
2:B:236:ASN:ND2	2:B:255:TYR:OH	2.45	0.49
1:A:9:LYS:HE3	1:A:17:VAL:HG13	1.93	0.48

Continued on next page...

Continued from previous page...

Atom-1	Atom-2	Interatomic distance (Å)	Clash overlap (Å)
2:B:257:GLN:HB3	2:B:343:HIS:HB3	1.95	0.48
1:A:119:HIS:CE1	1:A:182:THR:HB	2.49	0.48
2:B:256:PRO:HB2	2:B:259:ILE:HD13	1.96	0.48
1:A:98:GLY:HA2	1:A:199:ARG:HD2	1.97	0.47
2:B:259:ILE:HD12	2:B:259:ILE:N	2.29	0.47
1:A:261:SER:O	1:A:265:GLN:HG3	2.15	0.46
2:B:102:TRP:NE1	2:B:106:LEU:HD11	2.30	0.46
2:B:92:VAL:HA	2:B:98:ARG:HD2	1.97	0.46
2:B:316:MET:HB3	2:B:316:MET:HE2	1.76	0.46
2:B:258:GLN:O	2:B:262:GLN:HG3	2.15	0.45
2:B:97:ASN:HB3	2:B:100:GLU:HB3	1.98	0.45
2:B:266:LEU:HD21	2:B:316:MET:HE1	1.99	0.44
1:A:3:ASN:O	1:A:24:LYS:HG2	2.18	0.44
2:B:105:MET:HE1	2:B:237:VAL:HG21	1.99	0.44
2:B:258:GLN:HE21	2:B:262:GLN:NE2	2.13	0.44
2:B:214:MET:HA	2:B:217:MET:HE3	2.00	0.43
2:B:97:ASN:HB3	2:B:100:GLU:CB	2.49	0.42
2:B:259:ILE:H	2:B:259:ILE:CD1	2.28	0.42
2:B:107:ASN:HA	2:B:110:LYS:HD2	2.01	0.41

There are no symmetry-related clashes.

5.3 Torsion angles [i](#)

5.3.1 Protein backbone [i](#)

In the following table, the Percentiles column shows the percent Ramachandran outliers of the chain as a percentile score with respect to all X-ray entries followed by that with respect to entries of similar resolution.

The Analysed column shows the number of residues for which the backbone conformation was analysed, and the total number of residues.

Mol	Chain	Analysed	Favoured	Allowed	Outliers	Percentiles	
1	A	296/298 (99%)	285 (96%)	7 (2%)	4 (1%)	9	8
2	B	262/285 (92%)	257 (98%)	4 (2%)	1 (0%)	30	37
All	All	558/583 (96%)	542 (97%)	11 (2%)	5 (1%)	14	17

All (5) Ramachandran outliers are listed below:

Mol	Chain	Res	Type
1	A	164	VAL
1	A	166	LEU
1	A	73	GLU
1	A	162	GLU
2	B	92	VAL

5.3.2 Protein sidechains ⓘ

In the following table, the Percentiles column shows the percent sidechain outliers of the chain as a percentile score with respect to all X-ray entries followed by that with respect to entries of similar resolution.

The Analysed column shows the number of residues for which the sidechain conformation was analysed, and the total number of residues.

Mol	Chain	Analysed	Rotameric	Outliers	Percentiles	
1	A	258/263 (98%)	240 (93%)	18 (7%)	14	18
2	B	235/255 (92%)	226 (96%)	9 (4%)	29	43
All	All	493/518 (95%)	466 (94%)	27 (6%)	19	28

All (27) residues with a non-rotameric sidechain are listed below:

Mol	Chain	Res	Type
1	A	14	THR
1	A	15	TYR
1	A	38	ASP
1	A	59	ASN
1	A	72	THR
1	A	75	LYS
1	A	83	LEU
1	A	94	SER
1	A	159	TYR
1	A	199	ARG
1	A	212	LEU
1	A	232	SER
1	A	252	VAL
1	A	257	GLU
1	A	273	LYS
1	A	287	GLN
1	A	291	LYS
1	A	295	HIS
2	B	107	ASN

Continued on next page...

Continued from previous page...

Mol	Chain	Res	Type
2	B	138	MET
2	B	140	VAL
2	B	203	ASP
2	B	254	GLN
2	B	271	VAL
2	B	317	VAL
2	B	328	SER
2	B	353	ASP

Sometimes sidechains can be flipped to improve hydrogen bonding and reduce clashes. All (11) such sidechains are listed below:

Mol	Chain	Res	Type
1	A	5	GLN
1	A	59	ASN
1	A	113	GLN
1	A	119	HIS
1	A	268	HIS
2	B	174	GLN
2	B	196	HIS
2	B	236	ASN
2	B	257	GLN
2	B	258	GLN
2	B	291	HIS

5.3.3 RNA [i](#)

There are no RNA molecules in this entry.

5.4 Non-standard residues in protein, DNA, RNA chains [i](#)

There are no non-standard protein/DNA/RNA residues in this entry.

5.5 Carbohydrates [i](#)

There are no oligosaccharides in this entry.

5.6 Ligand geometry [i](#)

1 ligand is modelled in this entry.

In the following table, the Counts columns list the number of bonds (or angles) for which Mogul statistics could be retrieved, the number of bonds (or angles) that are observed in the model and the number of bonds (or angles) that are defined in the Chemical Component Dictionary. The Link column lists molecule types, if any, to which the group is linked. The Z score for a bond length (or angle) is the number of standard deviations the observed value is removed from the expected value. A bond length (or angle) with $|Z| > 2$ is considered an outlier worth inspection. RMSZ is the root-mean-square of all Z scores of the bond lengths (or angles).

Mol	Type	Chain	Res	Link	Bond lengths			Bond angles		
					Counts	RMSZ	# Z > 2	Counts	RMSZ	# Z > 2
3	A1IOP	A	301	-	29,32,32	0.30	0	38,46,46	0.59	0

In the following table, the Chirals column lists the number of chiral outliers, the number of chiral centers analysed, the number of these observed in the model and the number defined in the Chemical Component Dictionary. Similar counts are reported in the Torsion and Rings columns. '-' means no outliers of that kind were identified.

Mol	Type	Chain	Res	Link	Chirals	Torsions	Rings
3	A1IOP	A	301	-	-	5/23/35/35	0/3/3/3

There are no bond length outliers.

There are no bond angle outliers.

There are no chirality outliers.

All (5) torsion outliers are listed below:

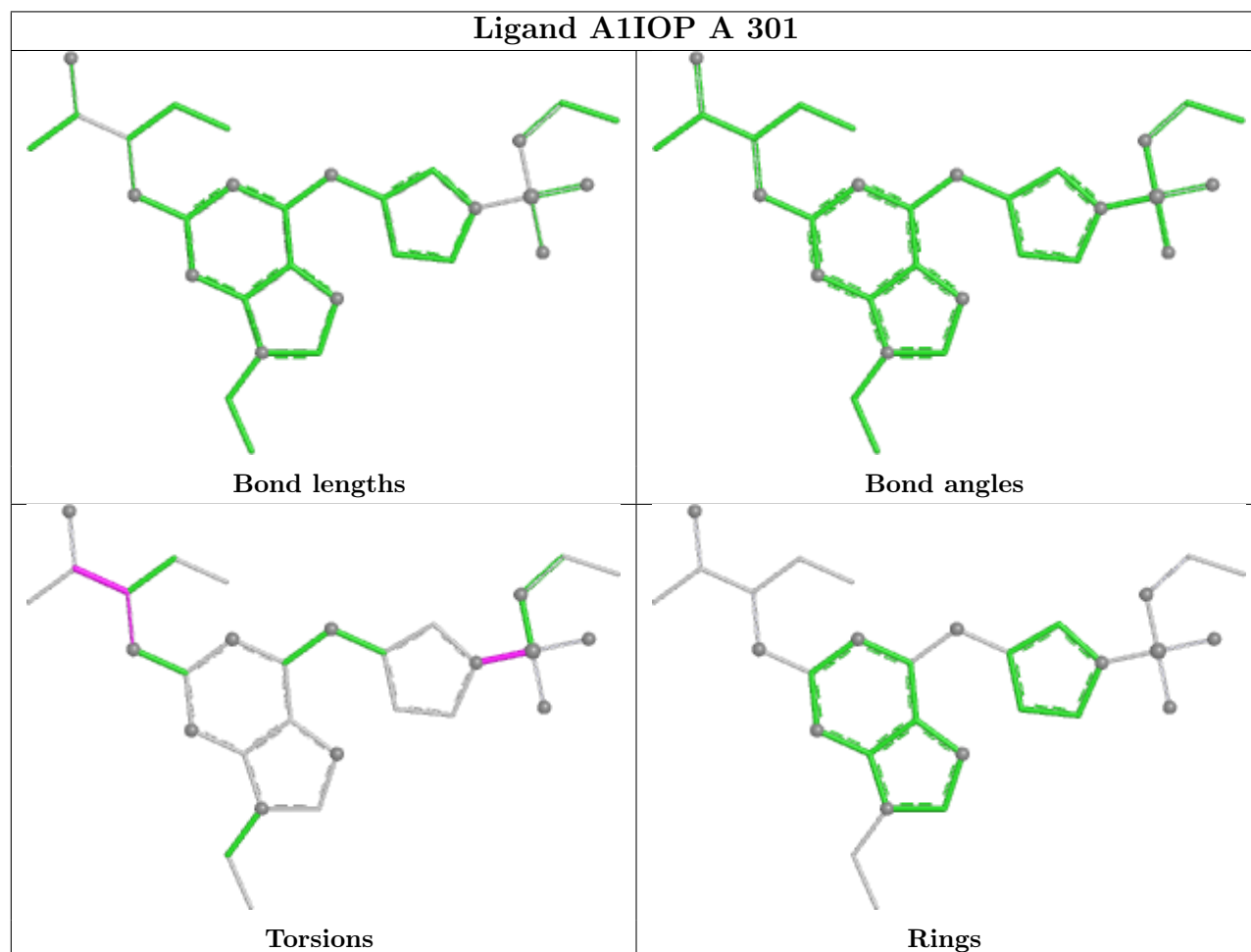
Mol	Chain	Res	Type	Atoms
3	A	301	A1IOP	C1-C2-C3-C4
3	A	301	A1IOP	C3-C2-N-C5
3	A	301	A1IOP	C15-N6-S-O2
3	A	301	A1IOP	C14-N6-S-O2
3	A	301	A1IOP	N-C2-C3-C4

There are no ring outliers.

No monomer is involved in short contacts.

The following is a two-dimensional graphical depiction of Mogul quality analysis of bond lengths, bond angles, torsion angles, and ring geometry for all instances of the Ligand of Interest. In addition, ligands with molecular weight > 250 and outliers as shown on the validation Tables will also be included. For torsion angles, if less than 5% of the Mogul distribution of torsion angles is within 10 degrees of the torsion angle in question, then that torsion angle is considered an outlier. Any bond that is central to one or more torsion angles identified as an outlier by Mogul will be highlighted in the graph. For rings, the root-mean-square deviation (RMSD) between the ring in question and similar rings identified by Mogul is calculated over all ring torsion angles. If the

average RMSD is greater than 60 degrees and the minimal RMSD between the ring in question and any Mogul-identified rings is also greater than 60 degrees, then that ring is considered an outlier. The outliers are highlighted in purple. The color gray indicates Mogul did not find sufficient equivalents in the CSD to analyse the geometry.



5.7 Other polymers [i](#)

There are no such residues in this entry.

5.8 Polymer linkage issues [i](#)

There are no chain breaks in this entry.

6 Fit of model and data

6.1 Protein, DNA and RNA chains

In the following table, the column labelled ‘#RSRZ > 2’ contains the number (and percentage) of RSRZ outliers, followed by percent RSRZ outliers for the chain as percentile scores relative to all X-ray entries and entries of similar resolution. The OWAB column contains the minimum, median, 95th percentile and maximum values of the occupancy-weighted average B-factor per residue. The column labelled ‘Q < 0.9’ lists the number of (and percentage) of residues with an average occupancy less than 0.9.

Mol	Chain	Analysed	<RSRZ>	#RSRZ>2	OWAB(Å ²)	Q<0.9
1	A	298/298 (100%)	0.70	29 (9%) 13 11	49, 68, 111, 122	0
2	B	266/285 (93%)	0.84	28 (10%) 11 9	56, 78, 109, 134	0
All	All	564/583 (96%)	0.76	57 (10%) 12 10	49, 73, 110, 134	0

All (57) RSRZ outliers are listed below:

Mol	Chain	Res	Type	RSRZ
2	B	95	TRP	7.3
1	A	154	VAL	6.1
1	A	155	PRO	5.0
2	B	255	TYR	4.4
2	B	88	SER	4.3
2	B	102	TRP	4.2
1	A	165	THR	4.0
1	A	14	THR	4.0
1	A	164	VAL	3.9
1	A	159	TYR	3.8
1	A	15	TYR	3.5
1	A	153	GLY	3.3
1	A	162	GLU	3.3
2	B	92	VAL	3.3
1	A	163	VAL	3.2
2	B	90	LEU	3.2
2	B	93	LEU	3.2
1	A	58	LEU	3.1
2	B	99	GLU	3.1
2	B	234	TRP	2.9
2	B	256	PRO	2.9
2	B	244	LEU	2.8
2	B	96	ALA	2.8
1	A	146	PHE	2.8

Continued on next page...

Continued from previous page...

Mol	Chain	Res	Type	RSRZ
1	A	161	HIS	2.8
1	A	25	LEU	2.7
2	B	335	ARG	2.7
2	B	124	LEU	2.6
1	A	158	THR	2.6
1	A	160	THR	2.6
2	B	361	LYS	2.6
1	A	4	PHE	2.5
2	B	172	LEU	2.5
1	A	296	LEU	2.4
2	B	169	VAL	2.4
1	A	55	LEU	2.4
1	A	156	VAL	2.4
1	A	152	PHE	2.3
1	A	150	ARG	2.3
1	A	151	ALA	2.3
2	B	259	ILE	2.2
2	B	352	LEU	2.2
2	B	321	MET	2.2
1	A	297	ARG	2.2
1	A	149	ALA	2.2
1	A	179	TYR	2.1
1	A	293	VAL	2.1
2	B	360	ALA	2.1
2	B	94	SER	2.1
2	B	350	ASP	2.1
2	B	314	LYS	2.1
2	B	245	ASN	2.1
2	B	119	LEU	2.1
1	A	29	VAL	2.1
1	A	143	LEU	2.1
2	B	269	LEU	2.1
2	B	105	MET	2.0

6.2 Non-standard residues in protein, DNA, RNA chains [i](#)

There are no non-standard protein/DNA/RNA residues in this entry.

6.3 Carbohydrates [i](#)

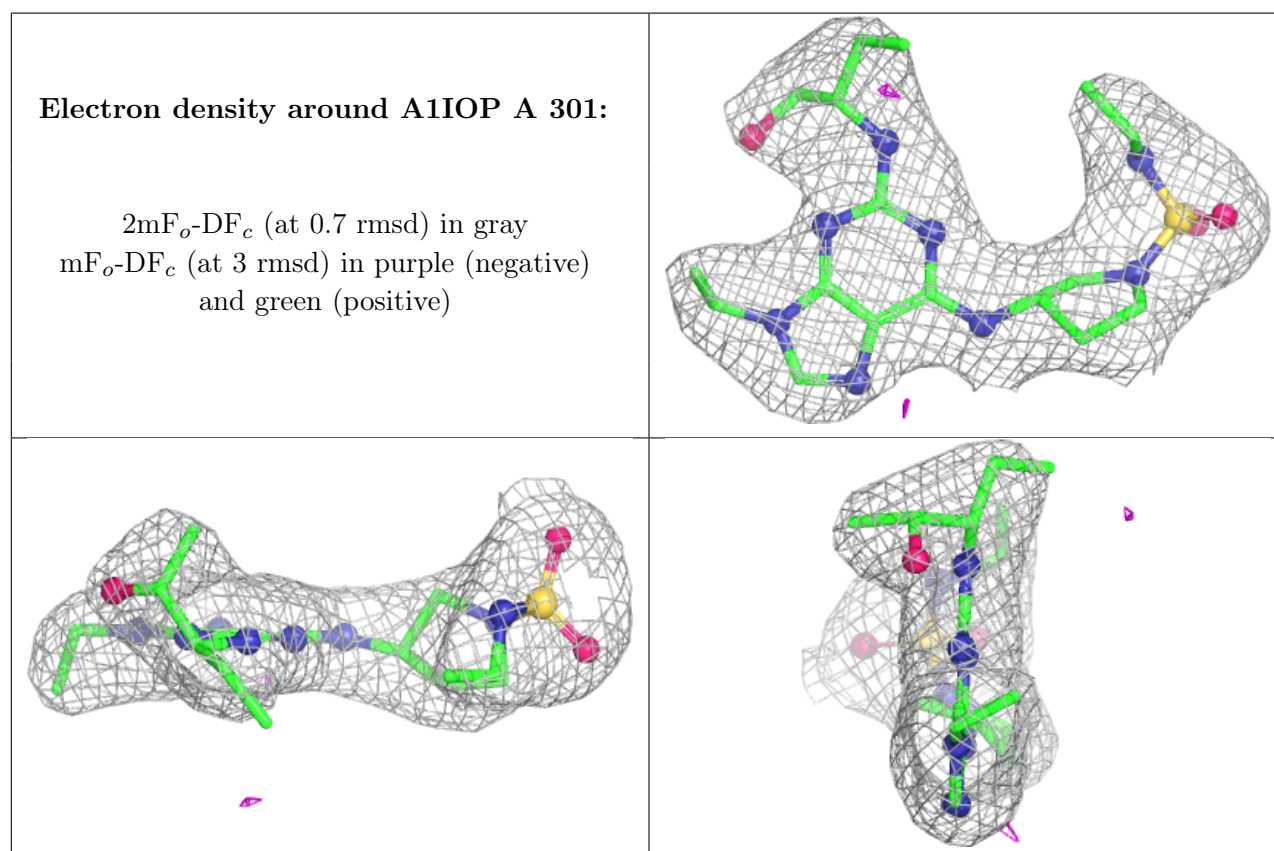
There are no oligosaccharides in this entry.

6.4 Ligands [i](#)

In the following table, the Atoms column lists the number of modelled atoms in the group and the number defined in the chemical component dictionary. The B-factors column lists the minimum, median, 95th percentile and maximum values of B factors of atoms in the group. The column labelled 'Q< 0.9' lists the number of atoms with occupancy less than 0.9.

Mol	Type	Chain	Res	Atoms	RSCC	RSR	B-factors(\AA^2)	Q<0.9
3	A1IOP	A	301	30/30	0.96	0.09	54,56,57,57	0

The following is a graphical depiction of the model fit to experimental electron density of all instances of the Ligand of Interest. In addition, ligands with molecular weight > 250 and outliers as shown on the geometry validation Tables will also be included. Each fit is shown from different orientation to approximate a three-dimensional view.



6.5 Other polymers [i](#)

There are no such residues in this entry.