



# Full wwPDB X-ray Structure Validation Report ⓘ

Mar 1, 2026 – 08:26 AM UTC

PDB ID : 9GM4 / pdb\_00009gm4  
Title : Crystal structure of elastase LasB from Pseudomonas aeruginosa PA14 in complex with 6558  
Authors : Kolling, D.; Koehnke, J.  
Deposited on : 2024-08-28  
Resolution : 1.51 Å(reported)

This is a Full wwPDB X-ray Structure Validation Report for a publicly released PDB entry.

We welcome your comments at [validation@mail.wwpdb.org](mailto:validation@mail.wwpdb.org)

A user guide is available at

<https://www.wwpdb.org/validation/2017/XrayValidationReportHelp>

with specific help available everywhere you see the ⓘ symbol.

The types of validation reports are described at

<http://www.wwpdb.org/validation/2017/FAQs#types>.

---

The following versions of software and data (see [references ⓘ](#)) were used in the production of this report:

MolProbity	:	4-5-2 with Phenix2.0
Mogul	:	2022.3.0, CSD as543be (2022)
Xtriage (Phenix)	:	2.0
EDS	:	3.0
Buster-report	:	wwPDB partial adaption of 1.1.7 (2018)
Percentile statistics	:	20250101.v01 (using entries in the PDB archive January 1st 2025)
CCP4	:	9.0.010 (Gargrove)
Density-Fitness	:	1.0.12
Ideal geometry (proteins)	:	Engh & Huber (2001)
Ideal geometry (DNA, RNA)	:	Parkinson et al. (1996)
Validation Pipeline (wwPDB-VP)	:	2.49

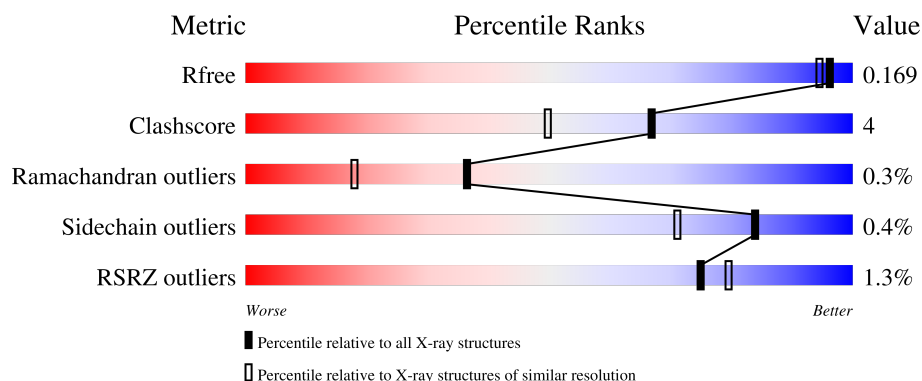
# 1 Overall quality at a glance

The following experimental techniques were used to determine the structure:

*X-RAY DIFFRACTION*


The reported resolution of this entry is 1.51 Å.

Percentile scores (ranging between 0-100) for global validation metrics of the entry are shown in the following graphic. The table shows the number of entries on which the scores are based.



Metric	Whole archive (#Entries)	Similar resolution (#Entries, resolution range(Å))
$R_{free}$	180053	5890 (1.54-1.50)
Clashscore	190562	6116 (1.54-1.50)
Ramachandran outliers	187476	6002 (1.54-1.50)
Sidechain outliers	187428	5999 (1.54-1.50)
RSRZ outliers	180081	5891 (1.54-1.50)

The table below summarises the geometric issues observed across the polymeric chains and their fit to the electron density. The red, orange, yellow and green segments of the lower bar indicate the fraction of residues that contain outliers for  $\geq 3$ , 2, 1 and 0 types of geometric quality criteria respectively. A grey segment represents the fraction of residues that are not modelled. The numeric value for each fraction is indicated below the corresponding segment, with a dot representing fractions  $\leq 5\%$ . The upper red bar (where present) indicates the fraction of residues that have poor fit to the electron density. The numeric value is given above the bar.

Mol	Chain	Length	Quality of chain
1	A	498	

## 2 Entry composition

There are 7 unique types of molecules in this entry. The entry contains 4979 atoms, of which 2243 are hydrogens and 0 are deuteriums.

In the tables below, the ZeroOcc column contains the number of atoms modelled with zero occupancy, the AltConf column contains the number of residues with at least one atom in alternate conformation and the Trace column contains the number of residues modelled with at most 2 atoms.

- Molecule 1 is a protein called Elastase.

Mol	Chain	Residues	Atoms						ZeroOcc	AltConf	Trace
1	A	298	Total	C	H	N	O	S	0	5	0
			4509	1469	2162	404	460	14			

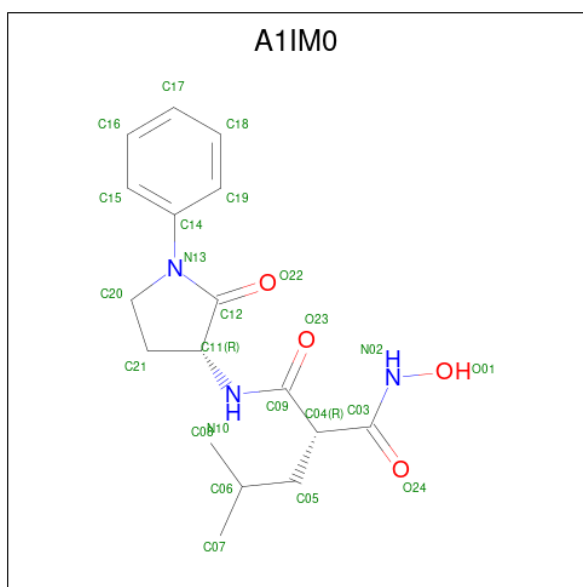
- Molecule 2 is ZINC ION (CCD ID: ZN) (formula: Zn).

Mol	Chain	Residues	Atoms		ZeroOcc	AltConf
2	A	1	Total	Zn	0	0
			1	1		

- Molecule 3 is CALCIUM ION (CCD ID: CA) (formula: Ca).

Mol	Chain	Residues	Atoms		ZeroOcc	AltConf
3	A	1	Total	Ca	0	0
			1	1		

- Molecule 4 is (2R)-2-(2-methylpropyl)-N-oxidanyl-N'-[(3R)-2-oxidanylidene-1-phenyl-pyrrolidin-3-yl]propanediamide (CCD ID: A1IM0) (formula: C<sub>17</sub>H<sub>23</sub>N<sub>3</sub>O<sub>4</sub>) (labeled as "Ligand of Interest" by depositor).



Mol	Chain	Residues	Atoms					ZeroOcc	AltConf
4	A	1	Total	C	H	N	O	0	0
			47	17	23	3	4		

- Molecule 5 is GLYCEROL (CCD ID: GOL) (formula:  $C_3H_8O_3$ ).



Mol	Chain	Residues	Atoms				ZeroOcc	AltConf
5	A	1	Total	C	H	O	0	0
			14	3	8	3		
5	A	1	Total	C	H	O	0	0
			14	3	8	3		
5	A	1	Total	C	H	O	0	0
			14	3	8	3		

- Molecule 6 is 4-(2-HYDROXYETHYL)-1-PIPERAZINE ETHANESULFONIC ACID (CCD ID: EPE) (formula:  $C_8H_{18}N_2O_4S$ ).



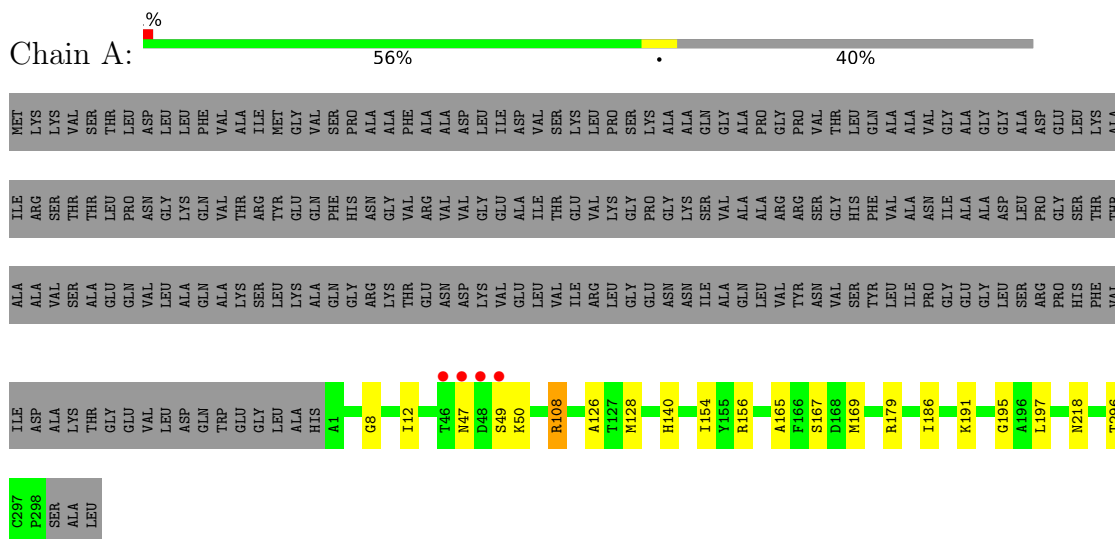
Mol	Chain	Residues	Atoms						ZeroOcc	AltConf
6	A	1	Total	C	H	N	O	S	0	0
			32	8	17	2	4	1		
6	A	1	Total	C	H	N	O	S	0	0
			32	8	17	2	4	1		

- Molecule 7 is water.

Mol	Chain	Residues	Atoms		ZeroOcc	AltConf
7	A	315	Total	O	0	0
			315	315		



- Molecule 1: Elastase



## 4 Data and refinement statistics

Property	Value	Source
Space group	P 21 21 21	Depositor
Cell constants a, b, c, $\alpha$ , $\beta$ , $\gamma$	43.55Å 52.22Å 122.32Å 90.00° 90.00° 90.00°	Depositor
Resolution (Å)	33.44 – 1.51 33.44 – 1.51	Depositor EDS
% Data completeness (in resolution range)	98.6 (33.44-1.51) 98.5 (33.44-1.51)	Depositor EDS
$R_{merge}$	(Not available)	Depositor
$R_{sym}$	(Not available)	Depositor
$\langle I/\sigma(I) \rangle$ <sup>1</sup>	1.64 (at 1.52Å)	Xtriage
Refinement program	PHENIX 1.19.2_4158	Depositor
R, $R_{free}$	0.152 , 0.170 0.152 , 0.169	Depositor DCC
$R_{free}$ test set	2219 reflections (5.00%)	wwPDB-VP
Wilson B-factor (Å <sup>2</sup> )	13.3	Xtriage
Anisotropy	0.564	Xtriage
Bulk solvent $k_{sol}$ (e/Å <sup>3</sup> ), $B_{sol}$ (Å <sup>2</sup> )	0.45 , 44.8	EDS
L-test for twinning <sup>2</sup>	$\langle  L  \rangle = 0.50$ , $\langle L^2 \rangle = 0.34$	Xtriage
Estimated twinning fraction	No twinning to report.	Xtriage
$F_o, F_c$ correlation	0.97	EDS
Total number of atoms	4979	wwPDB-VP
Average B, all atoms (Å <sup>2</sup> )	17.0	wwPDB-VP

Xtriage's analysis on translational NCS is as follows: *The largest off-origin peak in the Patterson function is 5.87% of the height of the origin peak. No significant pseudotranslation is detected.*

<sup>1</sup>Intensities estimated from amplitudes.

<sup>2</sup>Theoretical values of  $\langle |L| \rangle$ ,  $\langle L^2 \rangle$  for acentric reflections are 0.5, 0.333 respectively for untwinned datasets, and 0.375, 0.2 for perfectly twinned datasets.

## 5 Model quality

### 5.1 Standard geometry

Bond lengths and bond angles in the following residue types are not validated in this section: EPE, ZN, A1IM0, CA, GOL

The Z score for a bond length (or angle) is the number of standard deviations the observed value is removed from the expected value. A bond length (or angle) with  $|Z| > 5$  is considered an outlier worth inspection. RMSZ is the root-mean-square of all Z scores of the bond lengths (or angles).

Mol	Chain	Bond lengths		Bond angles	
		RMSZ	$\# Z  > 5$	RMSZ	$\# Z  > 5$
1	A	0.40	0/2409	0.61	1/3267 (0.0%)

Chiral center outliers are detected by calculating the chiral volume of a chiral center and verifying if the center is modelled as a planar moiety or with the opposite hand. A planarity outlier is detected by checking planarity of atoms in a peptide group, atoms in a mainchain group or atoms of a sidechain that are expected to be planar.

Mol	Chain	#Chirality outliers	#Planarity outliers
1	A	0	1

There are no bond length outliers.

All (1) bond angle outliers are listed below:

Mol	Chain	Res	Type	Atoms	Z	Observed( $^{\circ}$ )	Ideal( $^{\circ}$ )
1	A	108	ARG	CG-CD-NE	-5.25	100.45	112.00

There are no chirality outliers.

All (1) planarity outliers are listed below:

Mol	Chain	Res	Type	Group
1	A	108	ARG	Sidechain

### 5.2 Too-close contacts

In the following table, the Non-H and H(model) columns list the number of non-hydrogen atoms and hydrogen atoms in the chain respectively. The H(added) column lists the number of hydrogen atoms added and optimized by MolProbity. The Clashes column lists the number of clashes within the asymmetric unit, whereas Symm-Clashes lists symmetry-related clashes.



Mol	Chain	Non-H	H(model)	H(added)	Clashes	Symm-Clashes
1	A	2347	2162	2159	17	0
2	A	1	0	0	0	0
3	A	1	0	0	0	0
4	A	24	23	0	0	0
5	A	18	24	24	1	0
6	A	30	34	36	0	0
7	A	315	0	0	7	6
All	All	2736	2243	2219	17	6

The all-atom clashscore is defined as the number of clashes found per 1000 atoms (including hydrogen atoms). The all-atom clashscore for this structure is 4.

All (17) close contacts within the same asymmetric unit are listed below, sorted by their clash magnitude.

Atom-1	Atom-2	Interatomic distance (Å)	Clash overlap (Å)
1:A:191:LYS:NZ	7:A:502:HOH:O	2.12	0.78
1:A:218[A]:ASN:OD1	7:A:501:HOH:O	2.05	0.74
1:A:191:LYS:CE	7:A:502:HOH:O	2.45	0.64
1:A:191:LYS:HE3	7:A:502:HOH:O	1.99	0.63
1:A:154:ILE:HG22	1:A:156:ARG:HG2	1.92	0.52
1:A:165:ALA:O	1:A:169:MET:HG3	2.12	0.50
1:A:128[A]:MET:SD	1:A:191:LYS:HE2	2.52	0.50
1:A:195:GLY:N	7:A:505:HOH:O	2.46	0.49
1:A:128[B]:MET:HE3	1:A:191:LYS:HE2	1.94	0.48
1:A:128[B]:MET:SD	7:A:710:HOH:O	2.61	0.47
1:A:186:ILE:N	1:A:186:ILE:HD12	2.31	0.45
1:A:128[B]:MET:HE2	1:A:197:LEU:HD13	1.99	0.44
1:A:296[B]:THR:HG22	7:A:776:HOH:O	2.19	0.42
1:A:140:HIS:CG	1:A:167:SER:HB3	2.54	0.42
1:A:47:ASN:HD21	1:A:50:LYS:HB2	1.85	0.41
1:A:179:ARG:NH1	5:A:407:GOL:O2	2.44	0.41
1:A:8:GLY:HA2	1:A:12:ILE:HD11	2.04	0.40

All (6) symmetry-related close contacts are listed below. The label for Atom-2 includes the symmetry operator and encoded unit-cell translations to be applied.

Atom-1	Atom-2	Interatomic distance (Å)	Clash overlap (Å)
7:A:710:HOH:O	7:A:803:HOH:O[3_445]	1.94	0.26
7:A:770:HOH:O	7:A:786:HOH:O[1_455]	2.03	0.17
7:A:739:HOH:O	7:A:751:HOH:O[4_545]	2.05	0.15
7:A:790:HOH:O	7:A:812:HOH:O[1_655]	2.05	0.15

*Continued on next page...*

*Continued from previous page...*

Atom-1	Atom-2	Interatomic distance (Å)	Clash overlap (Å)
7:A:759:HOH:O	7:A:788:HOH:O[4_445]	2.09	0.11
7:A:732:HOH:O	7:A:778:HOH:O[4_545]	2.11	0.09

## 5.3 Torsion angles [i](#)

### 5.3.1 Protein backbone [i](#)

In the following table, the Percentiles column shows the percent Ramachandran outliers of the chain as a percentile score with respect to all X-ray entries followed by that with respect to entries of similar resolution.

The Analysed column shows the number of residues for which the backbone conformation was analysed, and the total number of residues.

Mol	Chain	Analysed	Favoured	Allowed	Outliers	Percentiles
1	A	301/498 (60%)	289 (96%)	11 (4%)	1 (0%)	36 18

All (1) Ramachandran outliers are listed below:

Mol	Chain	Res	Type
1	A	126	ALA

### 5.3.2 Protein sidechains [i](#)

In the following table, the Percentiles column shows the percent sidechain outliers of the chain as a percentile score with respect to all X-ray entries followed by that with respect to entries of similar resolution.

The Analysed column shows the number of residues for which the sidechain conformation was analysed, and the total number of residues.

Mol	Chain	Analysed	Rotameric	Outliers	Percentiles
1	A	243/390 (62%)	242 (100%)	1 (0%)	84 71

All (1) residues with a non-rotameric sidechain are listed below:

Mol	Chain	Res	Type
1	A	49	SER

Sometimes sidechains can be flipped to improve hydrogen bonding and reduce clashes. There are

no such sidechains identified.

### 5.3.3 RNA ⓘ

There are no RNA molecules in this entry.

## 5.4 Non-standard residues in protein, DNA, RNA chains ⓘ

There are no non-standard protein/DNA/RNA residues in this entry.

## 5.5 Carbohydrates ⓘ

There are no oligosaccharides in this entry.

## 5.6 Ligand geometry ⓘ

Of 8 ligands modelled in this entry, 2 are monoatomic - leaving 6 for Mogul analysis.

In the following table, the Counts columns list the number of bonds (or angles) for which Mogul statistics could be retrieved, the number of bonds (or angles) that are observed in the model and the number of bonds (or angles) that are defined in the Chemical Component Dictionary. The Link column lists molecule types, if any, to which the group is linked. The Z score for a bond length (or angle) is the number of standard deviations the observed value is removed from the expected value. A bond length (or angle) with  $|Z| > 2$  is considered an outlier worth inspection. RMSZ is the root-mean-square of all Z scores of the bond lengths (or angles).

Mol	Type	Chain	Res	Link	Bond lengths			Bond angles		
					Counts	RMSZ	# $ Z  > 2$	Counts	RMSZ	# $ Z  > 2$
6	EPE	A	406	-	15,15,15	1.13	1 (6%)	19,20,20	1.19	1 (5%)
5	GOL	A	407	-	5,5,5	0.54	0	5,5,5	0.88	0
6	EPE	A	405	-	15,15,15	1.17	2 (13%)	19,20,20	1.50	4 (21%)
5	GOL	A	404	-	5,5,5	0.39	0	5,5,5	0.25	0
4	A1IM0	A	403	2	22,25,25	6.83	9 (40%)	24,34,34	2.42	5 (20%)
5	GOL	A	408	-	5,5,5	0.61	0	5,5,5	0.27	0

In the following table, the Chirals column lists the number of chiral outliers, the number of chiral centers analysed, the number of these observed in the model and the number defined in the Chemical Component Dictionary. Similar counts are reported in the Torsion and Rings columns. '-' means no outliers of that kind were identified.

Mol	Type	Chain	Res	Link	Chirals	Torsions	Rings
6	EPE	A	406	-	-	0/9/19/19	0/1/1/1

*Continued on next page...*

Continued from previous page...

Mol	Type	Chain	Res	Link	Chirals	Torsions	Rings
5	GOL	A	407	-	-	2/4/4/4	-
6	EPE	A	405	-	-	0/9/19/19	0/1/1/1
5	GOL	A	404	-	-	2/4/4/4	-
4	A1IM0	A	403	2	-	4/22/35/35	0/2/2/2
5	GOL	A	408	-	-	2/4/4/4	-

All (12) bond length outliers are listed below:

Mol	Chain	Res	Type	Atoms	Z	Observed(Å)	Ideal(Å)
4	A	403	A1IM0	C12-N13	19.13	1.58	1.37
4	A	403	A1IM0	C11-C12	-19.09	1.23	1.52
4	A	403	A1IM0	C21-C20	-14.81	1.25	1.52
4	A	403	A1IM0	C20-N13	4.09	1.53	1.47
4	A	403	A1IM0	C21-C11	3.76	1.68	1.54
4	A	403	A1IM0	C11-N10	3.76	1.53	1.45
4	A	403	A1IM0	C09-N10	3.45	1.41	1.34
6	A	405	EPE	C10-S	3.00	1.81	1.77
6	A	406	EPE	C10-S	2.97	1.81	1.77
4	A	403	A1IM0	O23-C09	-2.71	1.18	1.23
4	A	403	A1IM0	O22-C12	-2.33	1.18	1.22
6	A	405	EPE	O2S-S	2.29	1.51	1.45

All (10) bond angle outliers are listed below:

Mol	Chain	Res	Type	Atoms	Z	Observed(°)	Ideal(°)
4	A	403	A1IM0	C20-N13-C12	-7.31	106.19	112.22
4	A	403	A1IM0	C14-N13-C12	5.60	131.10	126.18
4	A	403	A1IM0	C21-C20-N13	4.91	108.29	102.90
4	A	403	A1IM0	C21-C11-N10	-4.68	105.08	115.03
6	A	405	EPE	O3S-S-C10	2.95	111.78	106.00
6	A	405	EPE	O2S-S-C10	2.88	111.08	106.73
6	A	405	EPE	O3S-S-O2S	-2.75	104.53	111.40
6	A	406	EPE	O2S-S-C10	2.68	110.77	106.73
4	A	403	A1IM0	C12-C11-N10	-2.30	108.45	111.55
6	A	405	EPE	C6-C5-N4	2.18	115.04	110.65

There are no chirality outliers.

All (10) torsion outliers are listed below:

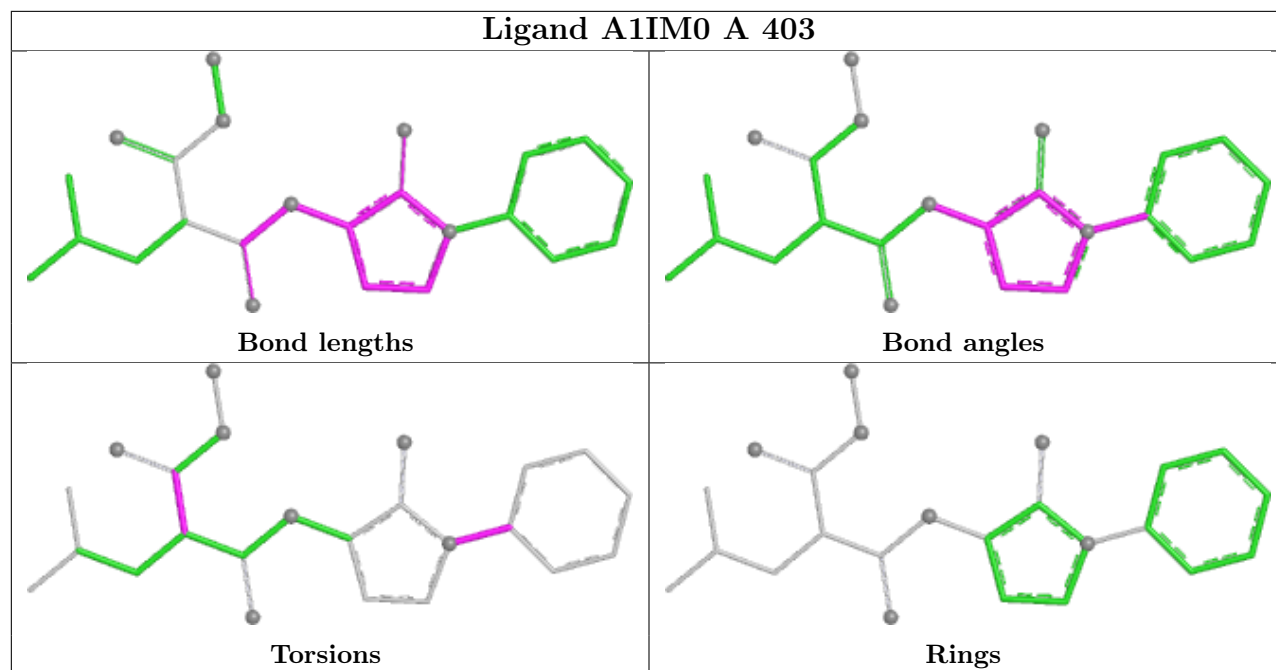
Mol	Chain	Res	Type	Atoms
5	A	407	GOL	O1-C1-C2-O2
5	A	407	GOL	O1-C1-C2-C3
5	A	408	GOL	O1-C1-C2-C3
4	A	403	A1IM0	C19-C14-N13-C12
5	A	404	GOL	C1-C2-C3-O3
5	A	408	GOL	O1-C1-C2-O2
4	A	403	A1IM0	C15-C14-N13-C12
5	A	404	GOL	O2-C2-C3-O3
4	A	403	A1IM0	N02-C03-C04-C05
4	A	403	A1IM0	O24-C03-C04-C05

There are no ring outliers.

1 monomer is involved in 1 short contact:

Mol	Chain	Res	Type	Clashes	Symm-Clashes
5	A	407	GOL	1	0

The following is a two-dimensional graphical depiction of Mogul quality analysis of bond lengths, bond angles, torsion angles, and ring geometry for all instances of the Ligand of Interest. In addition, ligands with molecular weight > 250 and outliers as shown on the validation Tables will also be included. For torsion angles, if less than 5% of the Mogul distribution of torsion angles is within 10 degrees of the torsion angle in question, then that torsion angle is considered an outlier. Any bond that is central to one or more torsion angles identified as an outlier by Mogul will be highlighted in the graph. For rings, the root-mean-square deviation (RMSD) between the ring in question and similar rings identified by Mogul is calculated over all ring torsion angles. If the average RMSD is greater than 60 degrees and the minimal RMSD between the ring in question and any Mogul-identified rings is also greater than 60 degrees, then that ring is considered an outlier. The outliers are highlighted in purple. The color gray indicates Mogul did not find sufficient equivalents in the CSD to analyse the geometry.



## 5.7 Other polymers [i](#)

There are no such residues in this entry.

## 5.8 Polymer linkage issues [i](#)

There are no chain breaks in this entry.

## 6 Fit of model and data [i](#)

### 6.1 Protein, DNA and RNA chains [i](#)

In the following table, the column labelled ‘#RSRZ> 2’ contains the number (and percentage) of RSRZ outliers, followed by percent RSRZ outliers for the chain as percentile scores relative to all X-ray entries and entries of similar resolution. The OWAB column contains the minimum, median, 95<sup>th</sup> percentile and maximum values of the occupancy-weighted average B-factor per residue. The column labelled ‘Q< 0.9’ lists the number of (and percentage) of residues with an average occupancy less than 0.9.

Mol	Chain	Analysed	<RSRZ>	#RSRZ>2	OWAB(Å <sup>2</sup> )	Q<0.9
1	A	298/498 (59%)	-0.38	4 (1%) 75 79	9, 15, 27, 52	5 (1%)

All (4) RSRZ outliers are listed below:

Mol	Chain	Res	Type	RSRZ
1	A	47	ASN	4.5
1	A	49	SER	4.0
1	A	46	THR	3.8
1	A	48	ASP	3.0

### 6.2 Non-standard residues in protein, DNA, RNA chains [i](#)

There are no non-standard protein/DNA/RNA residues in this entry.

### 6.3 Carbohydrates [i](#)

There are no oligosaccharides in this entry.

### 6.4 Ligands [i](#)

In the following table, the Atoms column lists the number of modelled atoms in the group and the number defined in the chemical component dictionary. The B-factors column lists the minimum, median, 95<sup>th</sup> percentile and maximum values of B factors of atoms in the group. The column labelled ‘Q< 0.9’ lists the number of atoms with occupancy less than 0.9.

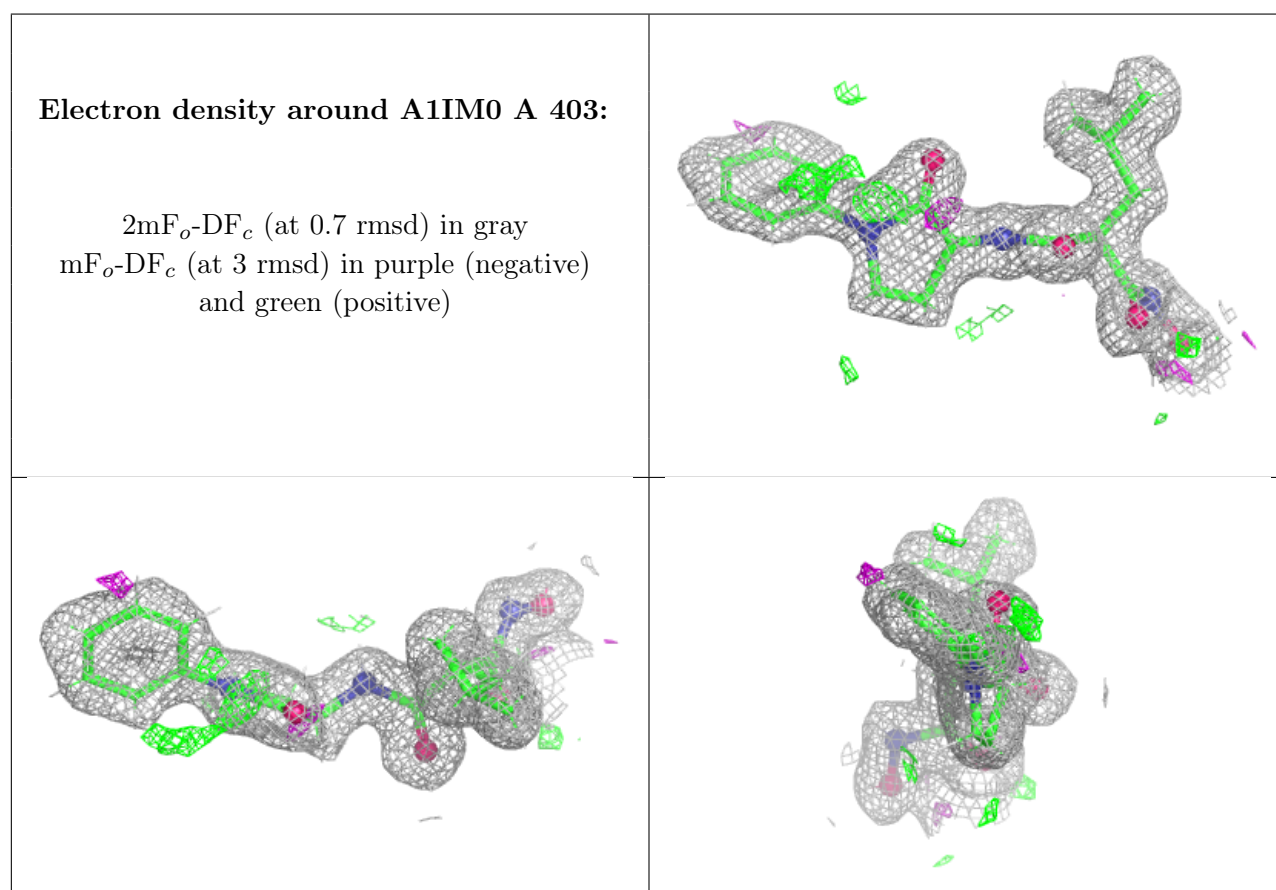
Mol	Type	Chain	Res	Atoms	RSCC	RSR	B-factors(Å <sup>2</sup> )	Q<0.9
5	GOL	A	407	6/6	0.77	0.12	29,37,48,53	0
5	GOL	A	408	6/6	0.79	0.15	23,40,49,59	0
6	EPE	A	406	15/15	0.94	0.09	13,19,25,28	0

*Continued on next page...*

*Continued from previous page...*

Mol	Type	Chain	Res	Atoms	RSCC	RSR	B-factors( $\text{\AA}^2$ )	Q<0.9
4	A1IM0	A	403	24/24	0.95	0.08	11,18,30,36	0
6	EPE	A	405	15/15	0.96	0.08	17,24,30,36	0
5	GOL	A	404	6/6	0.97	0.10	13,22,28,34	0
2	ZN	A	401	1/1	1.00	0.02	10,10,10,10	0
3	CA	A	402	1/1	1.00	0.02	11,11,11,11	0

The following is a graphical depiction of the model fit to experimental electron density of all instances of the Ligand of Interest. In addition, ligands with molecular weight > 250 and outliers as shown on the geometry validation Tables will also be included. Each fit is shown from different orientation to approximate a three-dimensional view.



## 6.5 Other polymers ⓘ

There are no such residues in this entry.