



# Full wwPDB X-ray Structure Validation Report ⓘ

Mar 5, 2026 – 12:30 PM UTC

PDB ID : 9GEU / pdb\_00009geu  
Title : Crystal structure of CREBBP bromodomain in complex with (R,E)-2-methyl-1,2,3,5,10,11,17,18,21,22-decahydro-4H,16H,20H-13,15-etheno-7,25-(metheno)[1,4]diazepino[2,3-h]pyrido[1,2-p][1]oxa[4,16]diazacyclononadecine-4,8(9H)-dione  
Authors : Amann, M.; Boyd, A.; Einsle, O.; Guenther, S.; Moroglu, M.; Conway, S.  
Deposited on : 2024-08-07  
Resolution : 1.56 Å(reported)

This is a Full wwPDB X-ray Structure Validation Report for a publicly released PDB entry.

We welcome your comments at [validation@mail.wwpdb.org](mailto:validation@mail.wwpdb.org)

A user guide is available at

<https://www.wwpdb.org/validation/2017/XrayValidationReportHelp>

with specific help available everywhere you see the ⓘ symbol.

The types of validation reports are described at

<http://www.wwpdb.org/validation/2017/FAQs#types>.

---

The following versions of software and data (see [references](#) ①) were used in the production of this report:

MolProbity	:	4-5-2 with Phenix2.0
Mogul	:	2022.3.0, CSD as543be (2022)
Xtriage (Phenix)	:	2.0
EDS	:	3.0
Buster-report	:	wwPDB partial adaption of 1.1.7 (2018)
Percentile statistics	:	20250101.v01 (using entries in the PDB archive January 1st 2025)
CCP4	:	9.0.010 (Gargrove)
Density-Fitness	:	1.0.12
Ideal geometry (proteins)	:	Engh & Huber (2001)
Ideal geometry (DNA, RNA)	:	Parkinson et al. (1996)
Validation Pipeline (wwPDB-VP)	:	2.49

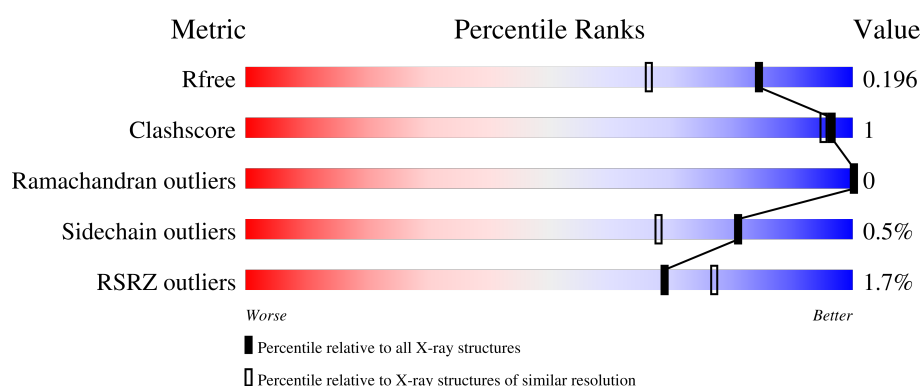
# 1 Overall quality at a glance

The following experimental techniques were used to determine the structure:

*X-RAY DIFFRACTION*

The reported resolution of this entry is 1.56 Å.

Percentile scores (ranging between 0-100) for global validation metrics of the entry are shown in the following graphic. The table shows the number of entries on which the scores are based.



Metric	Whole archive (#Entries)	Similar resolution (#Entries, resolution range(Å))
$R_{free}$	180053	2145 (1.56-1.56)
Clashscore	190562	2189 (1.56-1.56)
Ramachandran outliers	187476	2153 (1.56-1.56)
Sidechain outliers	187428	2150 (1.56-1.56)
RSRZ outliers	180081	2146 (1.56-1.56)

The table below summarises the geometric issues observed across the polymeric chains and their fit to the electron density. The red, orange, yellow and green segments of the lower bar indicate the fraction of residues that contain outliers for  $\geq 3$ , 2, 1 and 0 types of geometric quality criteria respectively. A grey segment represents the fraction of residues that are not modelled. The numeric value for each fraction is indicated below the corresponding segment, with a dot representing fractions  $\leq 5\%$ . The upper red bar (where present) indicates the fraction of residues that have poor fit to the electron density. The numeric value is given above the bar.

Mol	Chain	Length	Quality of chain
1	A	119	
1	B	119	

The following table lists non-polymeric compounds, carbohydrate monomers and non-standard residues in protein, DNA, RNA chains that are outliers for geometric or electron-density-fit criteria:

Mol	Type	Chain	Res	Chirality	Geometry	Clashes	Electron density
3	A1IKL	A	1202	X	-	-	-
3	A1IKL	B	1202	X	-	-	-

## 2 Entry composition [i](#)

There are 5 unique types of molecules in this entry. The entry contains 2400 atoms, of which 0 are hydrogens and 0 are deuteriums.

In the tables below, the ZeroOcc column contains the number of atoms modelled with zero occupancy, the AltConf column contains the number of residues with at least one atom in alternate conformation and the Trace column contains the number of residues modelled with at most 2 atoms.

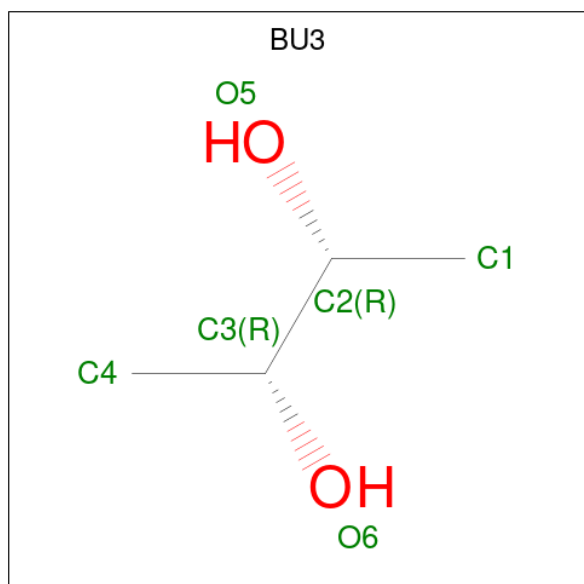
- Molecule 1 is a protein called CREBBP.

Mol	Chain	Residues	Atoms					ZeroOcc	AltConf	Trace
1	A	115	Total	C	N	O	S	0	6	0
			1004	656	162	181	5			
1	B	115	Total	C	N	O	S	0	4	0
			989	644	157	183	5			

There are 4 discrepancies between the modelled and reference sequences:

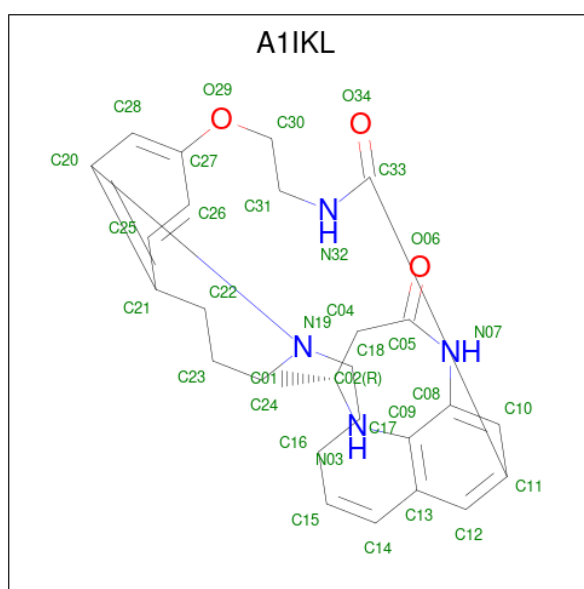
Chain	Residue	Modelled	Actual	Comment	Reference
A	1079	SER	-	expression tag	UNP Q92793
A	1080	MET	-	expression tag	UNP Q92793
B	1079	SER	-	expression tag	UNP Q92793
B	1080	MET	-	expression tag	UNP Q92793

- Molecule 2 is (R,R)-2,3-BUTANEDIOL (CCD ID: BU3) (formula: C<sub>4</sub>H<sub>10</sub>O<sub>2</sub>).



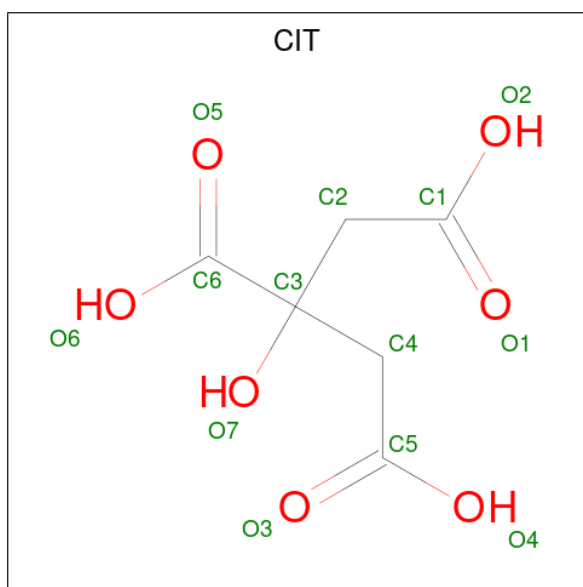
Mol	Chain	Residues	Atoms			ZeroOcc	AltConf
2	A	1	Total	C	O	0	0
			6	4	2		
2	A	1	Total	C	O	0	0
			6	4	2		
2	B	1	Total	C	O	0	0
			6	4	2		

- Molecule 3 is (R,E)-2-methyl-1,2,3,5,10,11,17,18,21,22-decahydro-4H,16H,20H-13,15-etheno-7,25-(metheno)[1,4]diazepino[2,3-h]pyrido[1,2-p][1]oxa[4,16]diazacyclononadecine-4,8(9H)-dione (CCD ID: A1IKL) (formula:  $C_{27}H_{32}N_4O_3$ ) (labeled as "Ligand of Interest" by depositor).



Mol	Chain	Residues	Atoms				ZeroOcc	AltConf
3	A	1	Total	C	N	O	0	0
			34	27	4	3		
3	B	1	Total	C	N	O	0	0
			34	27	4	3		

- Molecule 4 is CITRIC ACID (CCD ID: CIT) (formula:  $C_6H_8O_7$ ).



Mol	Chain	Residues	Atoms			ZeroOcc	AltConf
4	B	1	Total	C	O	0	0
			13	6	7		

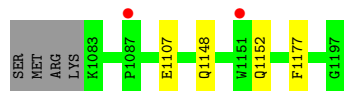
- Molecule 5 is water.

Mol	Chain	Residues	Atoms		ZeroOcc	AltConf
5	A	156	Total	O	0	0
			156	156		
5	B	152	Total	O	0	0
			152	152		

### 3 Residue-property plots [i](#)

These plots are drawn for all protein, RNA, DNA and oligosaccharide chains in the entry. The first graphic for a chain summarises the proportions of the various outlier classes displayed in the second graphic. The second graphic shows the sequence view annotated by issues in geometry and electron density. Residues are color-coded according to the number of geometric quality criteria for which they contain at least one outlier: green = 0, yellow = 1, orange = 2 and red = 3 or more. A red dot above a residue indicates a poor fit to the electron density ( $RSRZ > 2$ ). Stretches of 2 or more consecutive residues without any outlier are shown as a green connector. Residues present in the sample, but not in the model, are shown in grey.

- Molecule 1: CREBBP



- Molecule 1: CREBBP





## 4 Data and refinement statistics

Property	Value	Source
Space group	P 21 21 21	Depositor
Cell constants a, b, c, $\alpha$ , $\beta$ , $\gamma$	31.99Å 84.40Å 90.72Å 90.00° 90.00° 90.00°	Depositor
Resolution (Å)	61.79 – 1.56 61.79 – 1.56	Depositor EDS
% Data completeness (in resolution range)	99.9 (61.79-1.56) 99.9 (61.79-1.56)	Depositor EDS
$R_{merge}$	0.14	Depositor
$R_{sym}$	(Not available)	Depositor
$\langle I/\sigma(I) \rangle$ <sup>1</sup>	1.75 (at 1.56Å)	Xtriage
Refinement program	PHENIX v1.21-5207	Depositor
R, $R_{free}$	0.169 , 0.197 0.169 , 0.196	Depositor DCC
$R_{free}$ test set	1693 reflections (4.72%)	wwPDB-VP
Wilson B-factor (Å <sup>2</sup> )	18.1	Xtriage
Anisotropy	0.376	Xtriage
Bulk solvent $k_{sol}$ (e/Å <sup>3</sup> ), $B_{sol}$ (Å <sup>2</sup> )	0.35 , 44.3	EDS
L-test for twinning <sup>2</sup>	$\langle  L  \rangle = 0.51$ , $\langle L^2 \rangle = 0.35$	Xtriage
Estimated twinning fraction	No twinning to report.	Xtriage
$F_o, F_c$ correlation	0.97	EDS
Total number of atoms	2400	wwPDB-VP
Average B, all atoms (Å <sup>2</sup> )	22.0	wwPDB-VP

Xtriage's analysis on translational NCS is as follows: *The analyses of the Patterson function reveals a significant off-origin peak that is 37.95 % of the origin peak, indicating pseudo-translational symmetry. The chance of finding a peak of this or larger height randomly in a structure without pseudo-translational symmetry is equal to 3.9703e-04. The detected translational NCS is most likely also responsible for the elevated intensity ratio.*

<sup>1</sup>Intensities estimated from amplitudes.

<sup>2</sup>Theoretical values of  $\langle |L| \rangle$ ,  $\langle L^2 \rangle$  for acentric reflections are 0.5, 0.333 respectively for untwinned datasets, and 0.375, 0.2 for perfectly twinned datasets.

## 5 Model quality

### 5.1 Standard geometry

Bond lengths and bond angles in the following residue types are not validated in this section: CIT, A1IKL, BU3

The Z score for a bond length (or angle) is the number of standard deviations the observed value is removed from the expected value. A bond length (or angle) with  $|Z| > 5$  is considered an outlier worth inspection. RMSZ is the root-mean-square of all Z scores of the bond lengths (or angles).

Mol	Chain	Bond lengths		Bond angles	
		RMSZ	$\# Z  > 5$	RMSZ	$\# Z  > 5$
1	A	0.43	0/1048	0.56	0/1424
1	B	0.42	0/1024	0.57	0/1392
All	All	0.42	0/2072	0.57	0/2816

There are no bond length outliers.

There are no bond angle outliers.

There are no chirality outliers.

There are no planarity outliers.

### 5.2 Too-close contacts

In the following table, the Non-H and H(model) columns list the number of non-hydrogen atoms and hydrogen atoms in the chain respectively. The H(added) column lists the number of hydrogen atoms added and optimized by MolProbity. The Clashes column lists the number of clashes within the asymmetric unit, whereas Symm-Clashes lists symmetry-related clashes.

Mol	Chain	Non-H	H(model)	H(added)	Clashes	Symm-Clashes
1	A	1004	0	989	2	0
1	B	989	0	954	2	0
2	A	12	0	20	0	0
2	B	6	0	10	0	0
3	A	34	0	0	0	0
3	B	34	0	0	0	0
4	B	13	0	5	0	0
5	A	156	0	0	0	0
5	B	152	0	0	0	0
All	All	2400	0	1978	4	0

The all-atom clashscore is defined as the number of clashes found per 1000 atoms (including

hydrogen atoms). The all-atom clashscore for this structure is 1.

All (4) close contacts within the same asymmetric unit are listed below, sorted by their clash magnitude.

Atom-1	Atom-2	Interatomic distance (Å)	Clash overlap (Å)
1:A:1107:GLU:HA	1:A:1177:PHE:CD2	2.54	0.42
1:A:1148:GLN:N	1:A:1152:GLN:OE1	2.51	0.42
1:B:1180:LYS:HE2	1:B:1184:VAL:HG23	2.02	0.41
1:B:1189:ILE:HG13	1:B:1193:MET:HG2	2.04	0.40

There are no symmetry-related clashes.

## 5.3 Torsion angles [i](#)

### 5.3.1 Protein backbone [i](#)

In the following table, the Percentiles column shows the percent Ramachandran outliers of the chain as a percentile score with respect to all X-ray entries followed by that with respect to entries of similar resolution.

The Analysed column shows the number of residues for which the backbone conformation was analysed, and the total number of residues.

Mol	Chain	Analysed	Favoured	Allowed	Outliers	Percentiles	
1	A	120/119 (101%)	120 (100%)	0	0	100	100
1	B	117/119 (98%)	117 (100%)	0	0	100	100
All	All	237/238 (100%)	237 (100%)	0	0	100	100

There are no Ramachandran outliers to report.

### 5.3.2 Protein sidechains [i](#)

In the following table, the Percentiles column shows the percent sidechain outliers of the chain as a percentile score with respect to all X-ray entries followed by that with respect to entries of similar resolution.

The Analysed column shows the number of residues for which the sidechain conformation was analysed, and the total number of residues.

Mol	Chain	Analysed	Rotameric	Outliers	Percentiles	
1	A	111/112 (99%)	111 (100%)	0	100	100

*Continued on next page...*

*Continued from previous page...*

Mol	Chain	Analysed	Rotameric	Outliers	Percentiles	
1	B	108/112 (96%)	106 (98%)	2 (2%)	50	22
All	All	219/224 (98%)	217 (99%)	2 (1%)	81	51

All (2) residues with a non-rotameric sidechain are listed below:

Mol	Chain	Res	Type
1	B	1118[A]	GLN
1	B	1118[B]	GLN

Sometimes sidechains can be flipped to improve hydrogen bonding and reduce clashes. All (3) such sidechains are listed below:

Mol	Chain	Res	Type
1	A	1104	GLN
1	A	1113	GLN
1	B	1113	GLN

### 5.3.3 RNA [i](#)

There are no RNA molecules in this entry.

## 5.4 Non-standard residues in protein, DNA, RNA chains [i](#)

There are no non-standard protein/DNA/RNA residues in this entry.

## 5.5 Carbohydrates [i](#)

There are no oligosaccharides in this entry.

## 5.6 Ligand geometry [i](#)

6 ligands are modelled in this entry.

In the following table, the Counts columns list the number of bonds (or angles) for which Mogul statistics could be retrieved, the number of bonds (or angles) that are observed in the model and the number of bonds (or angles) that are defined in the Chemical Component Dictionary. The Link column lists molecule types, if any, to which the group is linked. The Z score for a bond length (or angle) is the number of standard deviations the observed value is removed from the

expected value. A bond length (or angle) with  $|Z| > 2$  is considered an outlier worth inspection. RMSZ is the root-mean-square of all Z scores of the bond lengths (or angles).

Mol	Type	Chain	Res	Link	Bond lengths			Bond angles		
					Counts	RMSZ	# Z  > 2	Counts	RMSZ	# Z  > 2
4	CIT	B	1203	-	12,12,12	1.36	1 (8%)	17,17,17	1.53	4 (23%)
3	A1IKL	B	1202	-	36,38,38	1.51	8 (22%)	47,53,53	2.71	19 (40%)
3	A1IKL	A	1202	-	36,38,38	1.51	7 (19%)	47,53,53	2.76	20 (42%)
2	BU3	A	1201	-	4,5,5	0.35	0	6,6,6	0.45	0
2	BU3	B	1201	-	4,5,5	0.57	0	6,6,6	0.77	0
2	BU3	A	1203	-	4,5,5	0.37	0	6,6,6	0.76	0

In the following table, the Chirals column lists the number of chiral outliers, the number of chiral centers analysed, the number of these observed in the model and the number defined in the Chemical Component Dictionary. Similar counts are reported in the Torsion and Rings columns. '-' means no outliers of that kind were identified.

Mol	Type	Chain	Res	Link	Chirals	Torsions	Rings
4	CIT	B	1203	-	-	2/16/16/16	-
3	A1IKL	B	1202	-	1/1/4/9	6/19/41/41	0/4/5/5
3	A1IKL	A	1202	-	1/1/4/9	6/19/41/41	0/4/5/5
2	BU3	A	1201	-	-	0/4/4/4	-
2	BU3	B	1201	-	-	0/4/4/4	-
2	BU3	A	1203	-	-	0/4/4/4	-

All (16) bond length outliers are listed below:

Mol	Chain	Res	Type	Atoms	Z	Observed(Å)	Ideal(Å)
3	B	1202	A1IKL	C24-N19	3.96	1.53	1.46
3	A	1202	A1IKL	C05-N07	3.71	1.39	1.35
3	A	1202	A1IKL	C10-C11	2.93	1.43	1.39
3	B	1202	A1IKL	C18-N19	2.88	1.57	1.47
3	A	1202	A1IKL	C12-C13	2.86	1.45	1.40
3	A	1202	A1IKL	C20-N19	2.67	1.50	1.43
3	A	1202	A1IKL	C09-C08	2.67	1.43	1.40
3	A	1202	A1IKL	C28-C20	2.48	1.43	1.39
4	B	1203	CIT	C3-C6	2.44	1.56	1.53
3	B	1202	A1IKL	C05-N07	2.34	1.38	1.35
3	B	1202	A1IKL	C12-C13	2.33	1.44	1.40
3	B	1202	A1IKL	C20-N19	2.23	1.49	1.43
3	A	1202	A1IKL	C28-C27	2.20	1.42	1.39
3	B	1202	A1IKL	C09-C08	2.12	1.42	1.40
3	B	1202	A1IKL	C25-C21	2.09	1.43	1.39
3	B	1202	A1IKL	C22-C21	-2.08	1.47	1.51

All (43) bond angle outliers are listed below:

Mol	Chain	Res	Type	Atoms	Z	Observed(°)	Ideal(°)
3	B	1202	A1IKL	C16-C15-C14	10.98	149.82	125.48
3	A	1202	A1IKL	C16-C15-C14	9.72	147.03	125.48
3	A	1202	A1IKL	C28-C20-N19	5.76	130.12	119.01
3	A	1202	A1IKL	C21-C20-N19	-5.46	117.40	121.60
3	A	1202	A1IKL	C28-C20-C21	-5.27	112.40	120.00
3	B	1202	A1IKL	C28-C20-C21	-4.91	112.93	120.00
3	B	1202	A1IKL	C20-C28-C27	4.77	127.76	118.02
3	A	1202	A1IKL	C13-C14-C15	-4.55	115.95	125.55
3	A	1202	A1IKL	C20-C28-C27	4.40	127.02	118.02
3	A	1202	A1IKL	C18-N19-C20	4.04	127.82	121.89
3	B	1202	A1IKL	C13-C14-C15	-3.95	117.21	125.55
3	B	1202	A1IKL	C23-C24-N19	3.76	118.17	111.06
3	B	1202	A1IKL	C28-C20-N19	3.67	126.08	119.01
3	A	1202	A1IKL	C04-C05-N07	3.52	119.01	116.63
3	B	1202	A1IKL	C31-N32-C33	3.37	129.73	122.11
3	B	1202	A1IKL	C04-C05-N07	3.20	118.80	116.63
3	B	1202	A1IKL	C09-C08-N07	-3.18	117.70	122.90
3	B	1202	A1IKL	C18-N19-C24	-3.17	109.96	116.92
3	A	1202	A1IKL	C26-C25-C21	3.11	125.45	121.39
4	B	1203	CIT	O7-C3-C6	2.94	113.13	108.96
3	B	1202	A1IKL	C25-C26-C27	-2.93	116.39	119.73
3	B	1202	A1IKL	C11-C33-N32	2.89	123.14	117.12
3	B	1202	A1IKL	C26-C25-C21	2.89	125.17	121.39
3	A	1202	A1IKL	C31-N32-C33	2.79	128.42	122.11
3	A	1202	A1IKL	C18-N19-C24	-2.78	110.82	116.92
3	B	1202	A1IKL	O34-C33-N32	-2.67	117.40	122.59
3	B	1202	A1IKL	C30-C31-N32	-2.58	105.68	111.82
3	A	1202	A1IKL	C09-C08-N07	-2.56	118.72	122.90
3	A	1202	A1IKL	C26-C27-C28	-2.53	117.10	120.50
3	A	1202	A1IKL	C08-C09-N03	2.50	125.28	121.42
4	B	1203	CIT	C4-C3-C2	2.50	115.74	109.31
3	A	1202	A1IKL	C23-C22-C21	2.50	118.40	112.43
4	B	1203	CIT	C2-C3-C6	-2.46	104.60	110.03
3	B	1202	A1IKL	C10-C08-N07	2.42	121.61	117.16
3	B	1202	A1IKL	C17-C16-C15	2.40	126.06	112.60
3	A	1202	A1IKL	C11-C33-N32	2.33	121.97	117.12
4	B	1203	CIT	O5-C6-C3	-2.27	117.69	122.09
3	B	1202	A1IKL	C30-O29-C27	2.25	123.77	117.93
3	B	1202	A1IKL	C26-C27-C28	-2.18	117.57	120.50
3	A	1202	A1IKL	O34-C33-N32	-2.11	118.49	122.59
3	A	1202	A1IKL	C25-C26-C27	-2.08	117.35	119.73
3	A	1202	A1IKL	C30-O29-C27	2.06	123.28	117.93
3	A	1202	A1IKL	C10-C08-N07	2.01	120.85	117.16

All (2) chirality outliers are listed below:

Mol	Chain	Res	Type	Atom
3	A	1202	A1IKL	N19
3	B	1202	A1IKL	N19

All (14) torsion outliers are listed below:

Mol	Chain	Res	Type	Atoms
3	A	1202	A1IKL	C15-C16-C17-C18
3	B	1202	A1IKL	C26-C27-O29-C30
3	B	1202	A1IKL	C28-C27-O29-C30
3	B	1202	A1IKL	C17-C18-N19-C20
3	B	1202	A1IKL	C14-C15-C16-C17
3	A	1202	A1IKL	O29-C30-C31-N32
3	A	1202	A1IKL	C16-C17-C18-N19
3	B	1202	A1IKL	O29-C30-C31-N32
4	B	1203	CIT	C6-C3-C4-C5
3	B	1202	A1IKL	C16-C17-C18-N19
4	B	1203	CIT	C2-C3-C4-C5
3	A	1202	A1IKL	C26-C27-O29-C30
3	A	1202	A1IKL	C28-C27-O29-C30
3	A	1202	A1IKL	C17-C18-N19-C24

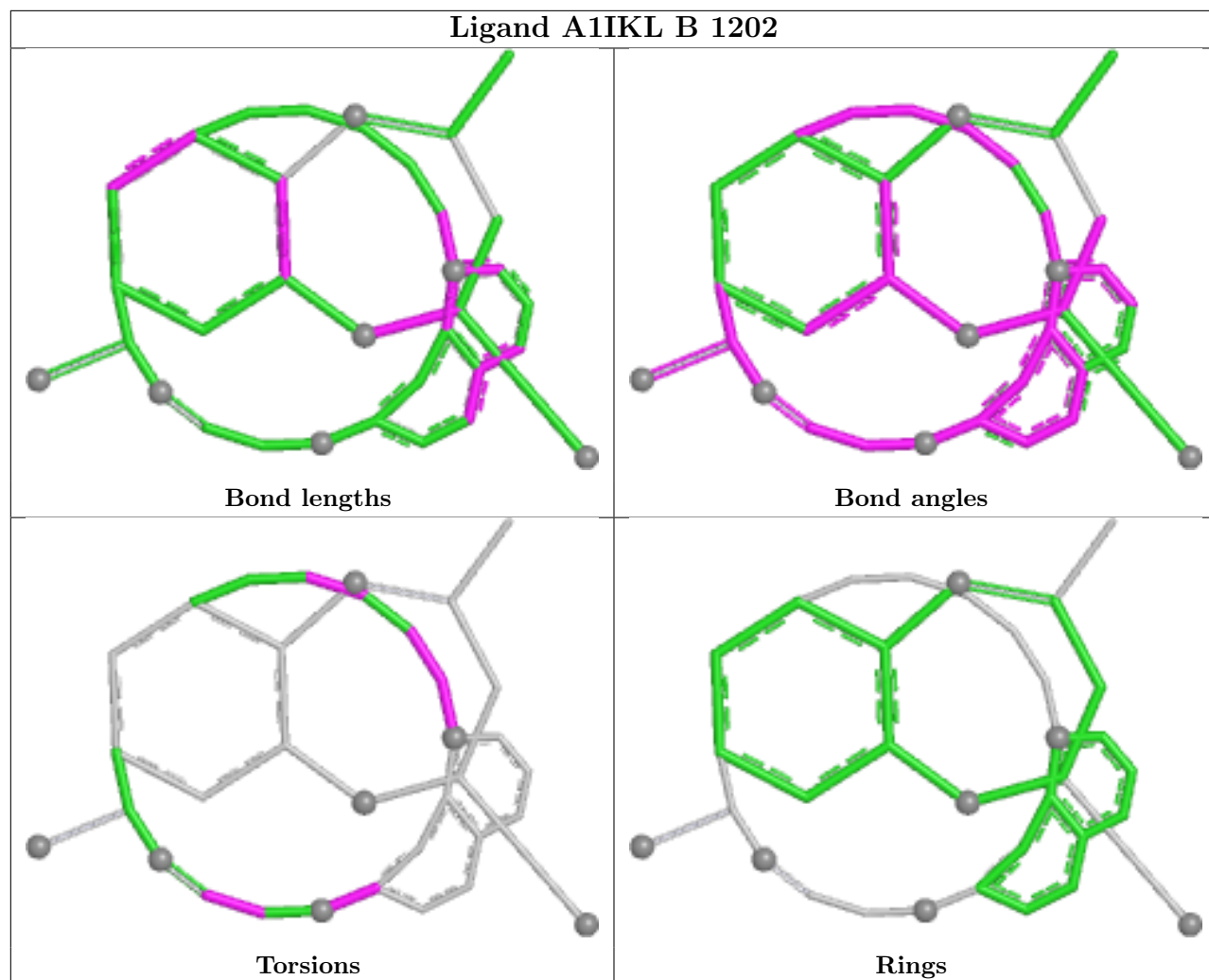
There are no ring outliers.

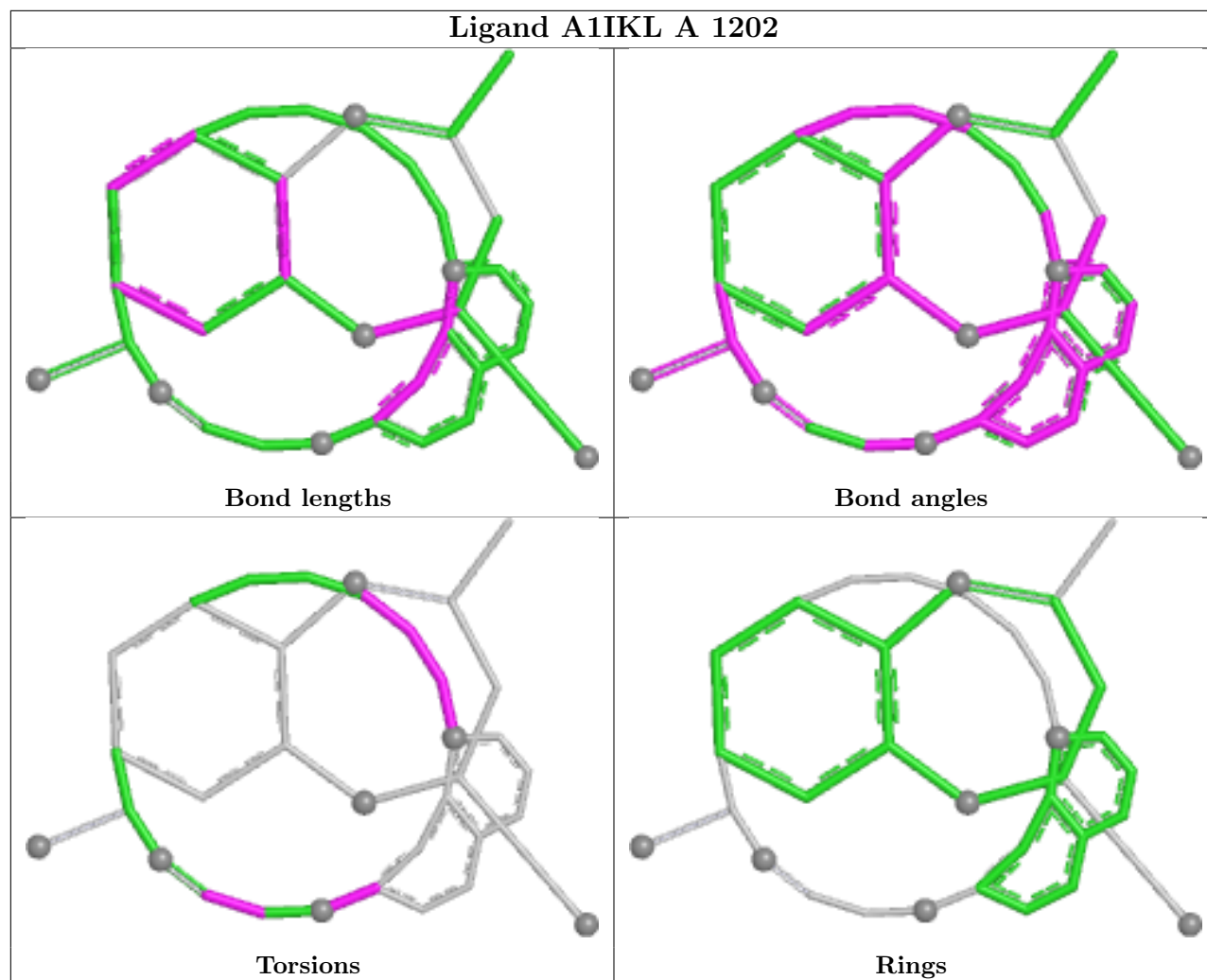
No monomer is involved in short contacts.

The following is a two-dimensional graphical depiction of Mogul quality analysis of bond lengths, bond angles, torsion angles, and ring geometry for all instances of the Ligand of Interest. In addition, ligands with molecular weight > 250 and outliers as shown on the validation Tables will also be included. For torsion angles, if less than 5% of the Mogul distribution of torsion angles is within 10 degrees of the torsion angle in question, then that torsion angle is considered an outlier. Any bond that is central to one or more torsion angles identified as an outlier by Mogul will be highlighted in the graph. For rings, the root-mean-square deviation (RMSD) between the ring in question and similar rings identified by Mogul is calculated over all ring torsion angles. If the average RMSD is greater than 60 degrees and the minimal RMSD between the ring in question and any Mogul-identified rings is also greater than 60 degrees, then that ring is considered an outlier. The outliers are highlighted in purple. The color gray indicates Mogul did not find sufficient equivalents in the CSD to analyse the geometry.



## Ligand A1IKL B 1202





## 5.7 Other polymers [i](#)

There are no such residues in this entry.

## 5.8 Polymer linkage issues [i](#)

There are no chain breaks in this entry.

## 6 Fit of model and data [i](#)

### 6.1 Protein, DNA and RNA chains [i](#)

In the following table, the column labelled ‘#RSRZ > 2’ contains the number (and percentage) of RSRZ outliers, followed by percent RSRZ outliers for the chain as percentile scores relative to all X-ray entries and entries of similar resolution. The OWAB column contains the minimum, median, 95<sup>th</sup> percentile and maximum values of the occupancy-weighted average B-factor per residue. The column labelled ‘Q < 0.9’ lists the number of (and percentage) of residues with an average occupancy less than 0.9.

Mol	Chain	Analysed	<RSRZ>	#RSRZ>2	OWAB(Å <sup>2</sup> )	Q<0.9
1	A	115/119 (96%)	-0.08	2 (1%) 69 77	10, 18, 35, 47	6 (5%)
1	B	115/119 (96%)	-0.04	2 (1%) 69 77	11, 18, 32, 52	4 (3%)
All	All	230/238 (96%)	-0.06	4 (1%) 69 77	10, 18, 32, 52	10 (4%)

All (4) RSRZ outliers are listed below:

Mol	Chain	Res	Type	RSRZ
1	B	1084	ILE	3.5
1	A	1151[A]	TRP	2.9
1	B	1083	LYS	2.3
1	A	1087	PRO	2.0

### 6.2 Non-standard residues in protein, DNA, RNA chains [i](#)

There are no non-standard protein/DNA/RNA residues in this entry.

### 6.3 Carbohydrates [i](#)

There are no oligosaccharides in this entry.

### 6.4 Ligands [i](#)

In the following table, the Atoms column lists the number of modelled atoms in the group and the number defined in the chemical component dictionary. The B-factors column lists the minimum, median, 95<sup>th</sup> percentile and maximum values of B factors of atoms in the group. The column labelled ‘Q < 0.9’ lists the number of atoms with occupancy less than 0.9.

Mol	Type	Chain	Res	Atoms	RSCC	RSR	B-factors(Å <sup>2</sup> )	Q<0.9
4	CIT	B	1203	13/13	0.80	0.15	24,30,37,41	13

*Continued on next page...*

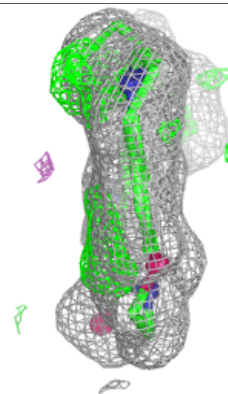
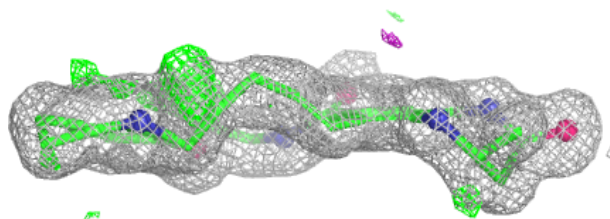
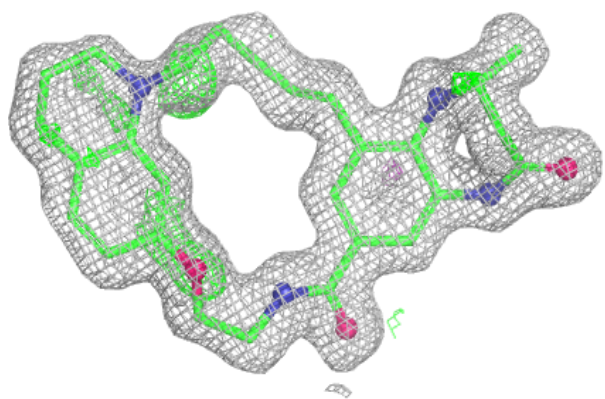
*Continued from previous page...*

Mol	Type	Chain	Res	Atoms	RSCC	RSR	B-factors( $\text{\AA}^2$ )	Q<0.9
2	BU3	A	1201	6/6	0.85	0.13	24,32,40,40	0
2	BU3	B	1201	6/6	0.90	0.09	20,21,26,27	0
2	BU3	A	1203	6/6	0.91	0.12	21,23,30,33	0
3	A1IKL	B	1202	34/34	0.93	0.09	14,20,32,43	0
3	A1IKL	A	1202	34/34	0.94	0.09	14,21,33,42	0

The following is a graphical depiction of the model fit to experimental electron density of all instances of the Ligand of Interest. In addition, ligands with molecular weight > 250 and outliers as shown on the geometry validation Tables will also be included. Each fit is shown from different orientation to approximate a three-dimensional view.

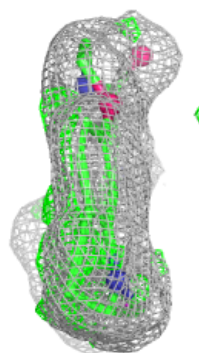
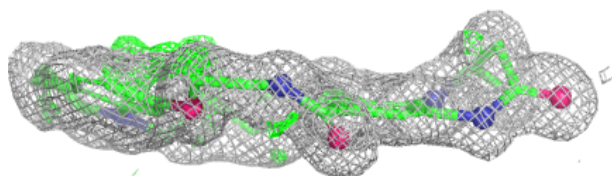
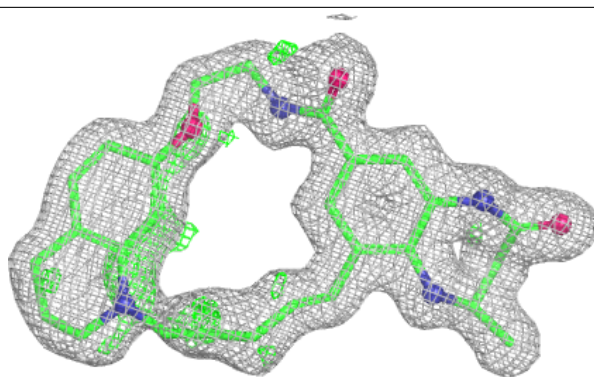
**Electron density around A1IKL B 1202:**

2mF<sub>o</sub>-DF<sub>c</sub> (at 0.7 rmsd) in gray  
mF<sub>o</sub>-DF<sub>c</sub> (at 3 rmsd) in purple (negative)  
and green (positive)



**Electron density around A1IKL A 1202:**

$2mF_o-DF_c$  (at 0.7 rmsd) in gray  
 $mF_o-DF_c$  (at 3 rmsd) in purple (negative)  
and green (positive)



## 6.5 Other polymers [i](#)

There are no such residues in this entry.