



Full wwPDB X-ray Structure Validation Report ⓘ

Mar 1, 2026 – 08:20 AM UTC

PDB ID : 9GBB / pdb_00009gbb
Title : Ferric-mycobactin receptor (FemA) in complex with Bis-AA
Authors : Moynie, L.
Deposited on : 2024-07-30
Resolution : 2.60 Å(reported)

This is a Full wwPDB X-ray Structure Validation Report for a publicly released PDB entry.

We welcome your comments at validation@mail.wwpdb.org

A user guide is available at

<https://www.wwpdb.org/validation/2017/XrayValidationReportHelp>

with specific help available everywhere you see the ⓘ symbol.

The types of validation reports are described at

<http://www.wwpdb.org/validation/2017/FAQs#types>.

The following versions of software and data (see [references ⓘ](#)) were used in the production of this report:

MolProbity : 4-5-2 with Phenix2.0
Mogul : 2022.3.0, CSD as543be (2022)
Xtriage (Phenix) : 2.0
EDS : 3.0
Buster-report : wwPDB partial adaption of 1.1.7 (2018)
Percentile statistics : 20250101.v01 (using entries in the PDB archive January 1st 2025)
CCP4 : 9.0.010 (Gargrove)
Density-Fitness : 1.0.12
Ideal geometry (proteins) : Engh & Huber (2001)
Ideal geometry (DNA, RNA) : Parkinson et al. (1996)
Validation Pipeline (wwPDB-VP) : 2.49

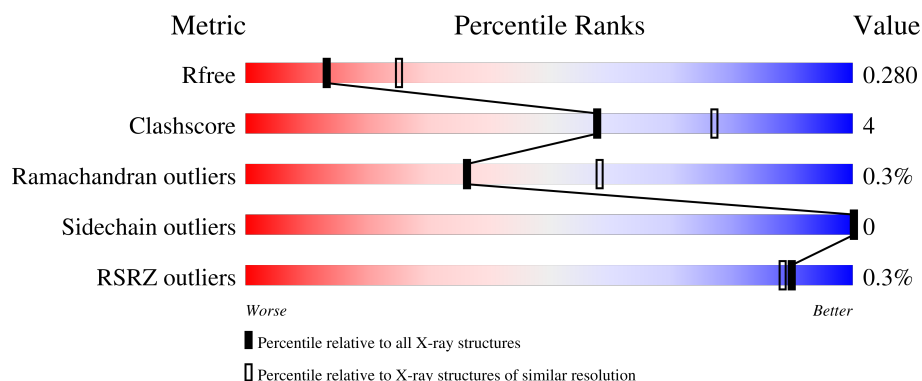
1 Overall quality at a glance

The following experimental techniques were used to determine the structure:

X-RAY DIFFRACTION

The reported resolution of this entry is 2.60 Å.

Percentile scores (ranging between 0-100) for global validation metrics of the entry are shown in the following graphic. The table shows the number of entries on which the scores are based.



Metric	Whole archive (#Entries)	Similar resolution (#Entries, resolution range(Å))
R_{free}	180053	4008 (2.60-2.60)
Clashscore	190562	4347 (2.60-2.60)
Ramachandran outliers	187476	4277 (2.60-2.60)
Sidechain outliers	187428	4277 (2.60-2.60)
RSRZ outliers	180081	4008 (2.60-2.60)

The table below summarises the geometric issues observed across the polymeric chains and their fit to the electron density. The red, orange, yellow and green segments of the lower bar indicate the fraction of residues that contain outliers for ≥ 3 , 2, 1 and 0 types of geometric quality criteria respectively. A grey segment represents the fraction of residues that are not modelled. The numeric value for each fraction is indicated below the corresponding segment, with a dot representing fractions $\leq 5\%$. The upper red bar (where present) indicates the fraction of residues that have poor fit to the electron density. The numeric value is given above the bar.

Mol	Chain	Length	Quality of chain
1	A	780	
1	B	780	

2 Entry composition

There are 8 unique types of molecules in this entry. The entry contains 10863 atoms, of which 0 are hydrogens and 0 are deuteriums.

In the tables below, the ZeroOcc column contains the number of atoms modelled with zero occupancy, the AltConf column contains the number of residues with at least one atom in alternate conformation and the Trace column contains the number of residues modelled with at most 2 atoms.

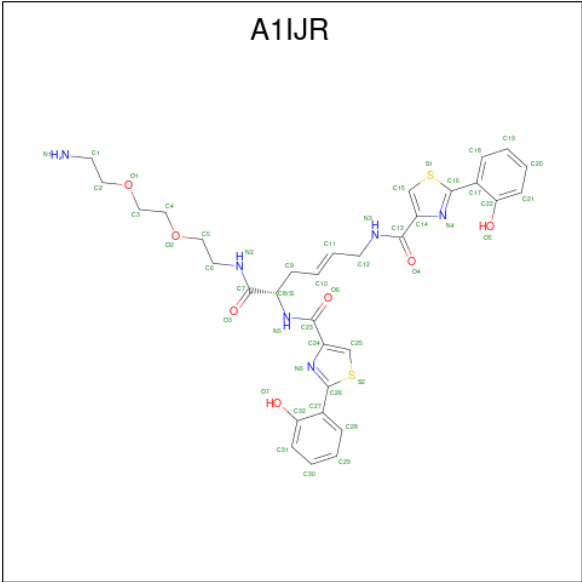
- Molecule 1 is a protein called Ferric-mycobactin receptor, FemA.

Mol	Chain	Residues	Atoms					ZeroOcc	AltConf	Trace
1	B	670	Total	C	N	O	S	0	0	0
			5142	3205	929	999	9			
1	A	670	Total	C	N	O	S	0	0	0
			5142	3205	929	999	9			

There are 8 discrepancies between the modelled and reference sequences:

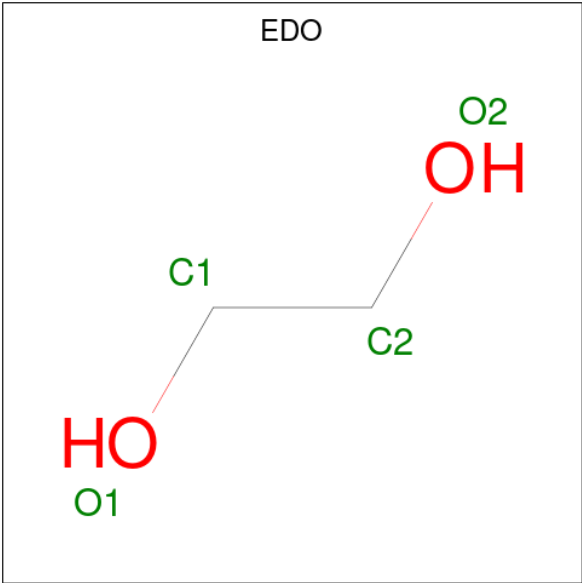
Chain	Residue	Modelled	Actual	Comment	Reference
B	-2	GLY	-	expression tag	UNP Q9I2J4
B	-1	ALA	-	expression tag	UNP Q9I2J4
B	0	MET	-	expression tag	UNP Q9I2J4
B	1	THR	-	expression tag	UNP Q9I2J4
A	-2	GLY	-	expression tag	UNP Q9I2J4
A	-1	ALA	-	expression tag	UNP Q9I2J4
A	0	MET	-	expression tag	UNP Q9I2J4
A	1	THR	-	expression tag	UNP Q9I2J4

- Molecule 2 is {N}-[({E},5 {S})-6-[2-[2-(2-azanylethoxy)ethoxy]ethylamino]-5-[[2-(2-hydroxyphenyl)-1,3-thiazol-4-yl]carbonylamino]-6-oxidanylidene-hex-2-enyl]-2-(2-hydroxyphenyl)-1,3-thiazole-4-carboxamide (CCD ID: A1IJR) (formula: C₃₂H₃₆N₆O₇S₂) (labeled as "Ligand of Interest" by depositor).



Mol	Chain	Residues	Atoms					ZeroOcc	AltConf
2	B	1	Total	C	N	O	S	0	0
			47	32	6	7	2		
2	A	1	Total	C	N	O	S	0	0
			47	32	6	7	2		

- Molecule 3 is 1,2-ETHANEDIOL (CCD ID: EDO) (formula: C₂H₆O₂).



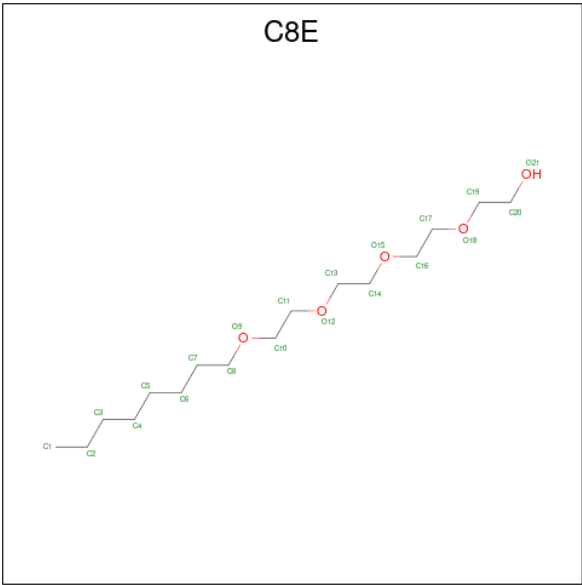
Mol	Chain	Residues	Atoms			ZeroOcc	AltConf
3	B	1	Total	C	O	0	0
			4	2	2		
3	B	1	Total	C	O	0	0
			4	2	2		

Continued on next page...

Continued from previous page...

Mol	Chain	Residues	Atoms			ZeroOcc	AltConf
3	B	1	Total	C	O	0	0
			4	2	2		
3	B	1	Total	C	O	0	0
			4	2	2		
3	A	1	Total	C	O	0	0
			4	2	2		
3	A	1	Total	C	O	0	0
			4	2	2		
3	A	1	Total	C	O	0	0
			4	2	2		
3	A	1	Total	C	O	0	0
			4	2	2		
3	A	1	Total	C	O	0	0
			4	2	2		

- Molecule 4 is (HYDROXYETHYLOXY)TRI(ETHYLOXY)OCTANE (CCD ID: C8E) (formula: C₁₆H₃₄O₅).



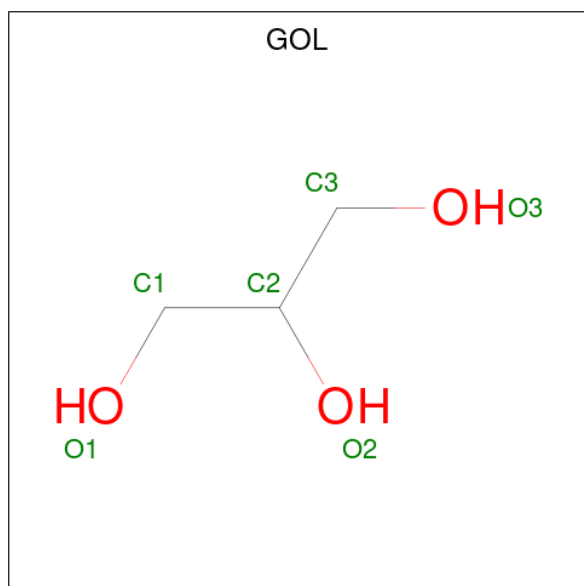
Mol	Chain	Residues	Atoms			ZeroOcc	AltConf
4	B	1	Total	C	O	0	0
			15	12	3		
4	B	1	Total	C	O	0	0
			15	12	3		
4	A	1	Total	C	O	0	0
			15	12	3		

Continued on next page...

Continued from previous page...

Mol	Chain	Residues	Atoms			ZeroOcc	AltConf
4	A	1	Total	C	O	0	0
			15	12	3		

- Molecule 5 is GLYCEROL (CCD ID: GOL) (formula: $C_3H_8O_3$).



Mol	Chain	Residues	Atoms			ZeroOcc	AltConf
5	B	1	Total	C	O	0	0
			6	3	3		
5	B	1	Total	C	O	0	0
			6	3	3		
5	A	1	Total	C	O	0	0
			6	3	3		

- Molecule 6 is FE (III) ION (CCD ID: FE) (formula: Fe).

Mol	Chain	Residues	Atoms		ZeroOcc	AltConf
6	B	1	Total	Fe	0	0
			1	1		
6	A	1	Total	Fe	0	0
			1	1		

- Molecule 7 is POTASSIUM ION (CCD ID: K) (formula: K).

Mol	Chain	Residues	Atoms		ZeroOcc	AltConf
7	B	2	Total	K	0	0
			2	2		

Continued on next page...

Continued from previous page...

Mol	Chain	Residues	Atoms		ZeroOcc	AltConf
7	A	2	Total	K	0	0
			2	2		

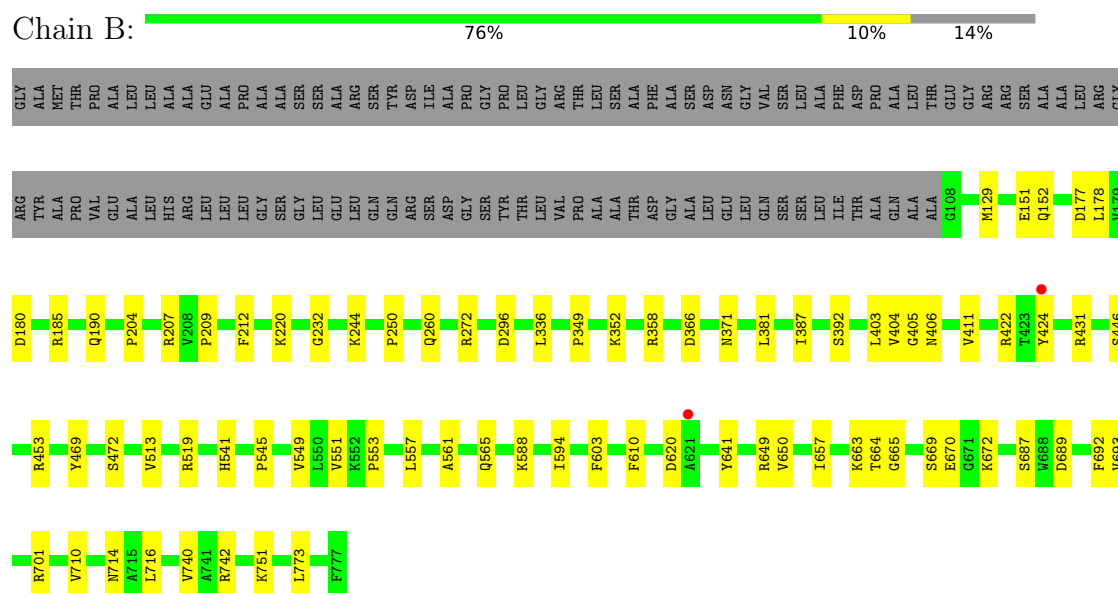
- Molecule 8 is water.

Mol	Chain	Residues	Atoms		ZeroOcc	AltConf
8	B	174	Total	O	0	0
			174	174		
8	A	187	Total	O	0	0
			187	187		

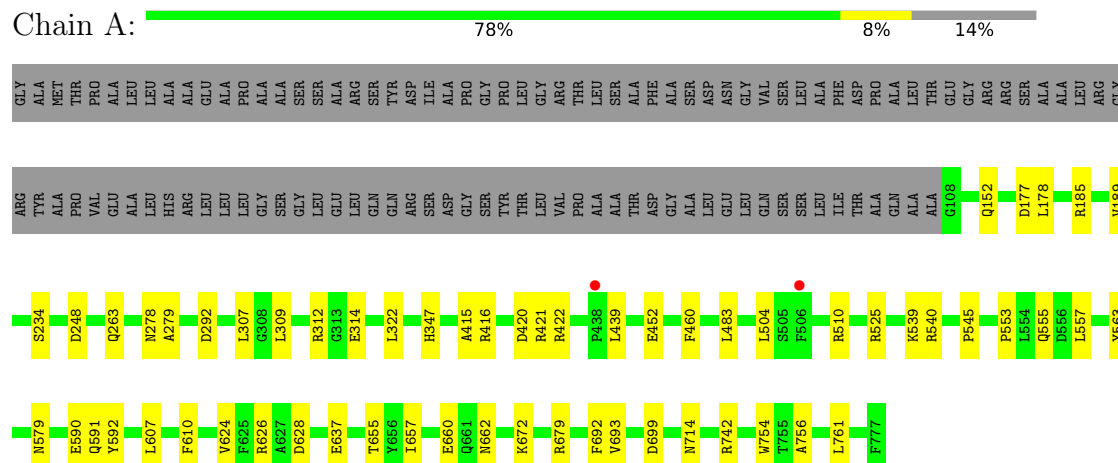
3 Residue-property plots

These plots are drawn for all protein, RNA, DNA and oligosaccharide chains in the entry. The first graphic for a chain summarises the proportions of the various outlier classes displayed in the second graphic. The second graphic shows the sequence view annotated by issues in geometry and electron density. Residues are color-coded according to the number of geometric quality criteria for which they contain at least one outlier: green = 0, yellow = 1, orange = 2 and red = 3 or more. A red dot above a residue indicates a poor fit to the electron density ($RSRZ > 2$). Stretches of 2 or more consecutive residues without any outlier are shown as a green connector. Residues present in the sample, but not in the model, are shown in grey.

• Molecule 1: Ferric-mycobactin receptor, FemA



• Molecule 1: Ferric-mycobactin receptor, FemA



4 Data and refinement statistics

Property	Value	Source
Space group	P 1	Depositor
Cell constants a, b, c, α , β , γ	85.12Å 86.73Å 88.50Å 89.96° 61.66° 66.22°	Depositor
Resolution (Å)	46.65 – 2.60 46.65 – 2.60	Depositor EDS
% Data completeness (in resolution range)	98.6 (46.65-2.60) 98.7 (46.65-2.60)	Depositor EDS
R_{merge}	(Not available)	Depositor
R_{sym}	(Not available)	Depositor
$\langle I/\sigma(I) \rangle$ ¹	1.39 (at 2.55Å)	Xtriage
Refinement program	PHENIX 1.14_3260	Depositor
R, R_{free}	0.215 , 0.280 0.216 , 0.280	Depositor DCC
R_{free} test set	2031 reflections (3.14%)	wwPDB-VP
Wilson B-factor (Å ²)	37.8	Xtriage
Anisotropy	0.437	Xtriage
Bulk solvent k_{sol} (e/Å ³), B_{sol} (Å ²)	0.33 , 50.0	EDS
L-test for twinning ²	$\langle L \rangle = 0.51$, $\langle L^2 \rangle = 0.34$	Xtriage
Estimated twinning fraction	No twinning to report.	Xtriage
F_o, F_c correlation	0.92	EDS
Total number of atoms	10863	wwPDB-VP
Average B, all atoms (Å ²)	38.0	wwPDB-VP

Xtriage's analysis on translational NCS is as follows: *The largest off-origin peak in the Patterson function is 11.63% of the height of the origin peak. No significant pseudotranslation is detected.*

¹Intensities estimated from amplitudes.

²Theoretical values of $\langle |L| \rangle$, $\langle L^2 \rangle$ for acentric reflections are 0.5, 0.333 respectively for untwinned datasets, and 0.375, 0.2 for perfectly twinned datasets.

5 Model quality [i](#)

5.1 Standard geometry [i](#)

Bond lengths and bond angles in the following residue types are not validated in this section: K, C8E, GOL, EDO, FE, A1IJR

The Z score for a bond length (or angle) is the number of standard deviations the observed value is removed from the expected value. A bond length (or angle) with $|Z| > 5$ is considered an outlier worth inspection. RMSZ is the root-mean-square of all Z scores of the bond lengths (or angles).

Mol	Chain	Bond lengths		Bond angles	
		RMSZ	$\# Z > 5$	RMSZ	$\# Z > 5$
1	A	0.42	0/5248	0.58	0/7129
1	B	0.42	0/5248	0.58	0/7129
All	All	0.42	0/10496	0.58	0/14258

There are no bond length outliers.

There are no bond angle outliers.

There are no chirality outliers.

There are no planarity outliers.

5.2 Too-close contacts [i](#)

In the following table, the Non-H and H(model) columns list the number of non-hydrogen atoms and hydrogen atoms in the chain respectively. The H(added) column lists the number of hydrogen atoms added and optimized by MolProbity. The Clashes column lists the number of clashes within the asymmetric unit, whereas Symm-Clashes lists symmetry-related clashes.

Mol	Chain	Non-H	H(model)	H(added)	Clashes	Symm-Clashes
1	A	5142	0	4998	41	0
1	B	5142	0	4998	49	0
2	A	47	0	0	0	0
2	B	47	0	0	0	0
3	A	24	0	36	2	0
3	B	16	0	24	2	0
4	A	30	0	50	1	0
4	B	30	0	50	2	0
5	A	6	0	8	0	0
5	B	12	0	16	3	0
6	A	1	0	0	0	0

Continued on next page...

Continued from previous page...

Mol	Chain	Non-H	H(model)	H(added)	Clashes	Symm-Clashes
6	B	1	0	0	0	0
7	A	2	0	0	0	0
7	B	2	0	0	0	0
8	A	187	0	0	4	0
8	B	174	0	0	6	0
All	All	10863	0	10180	93	0

The all-atom clashscore is defined as the number of clashes found per 1000 atoms (including hydrogen atoms). The all-atom clashscore for this structure is 4.

All (93) close contacts within the same asymmetric unit are listed below, sorted by their clash magnitude.

Atom-1	Atom-2	Interatomic distance (Å)	Clash overlap (Å)
1:A:699:ASP:OD1	8:A:901:HOH:O	1.99	0.80
1:B:232:GLY:O	8:B:901:HOH:O	2.00	0.78
1:A:637:GLU:HG2	1:A:655:THR:HG22	1.70	0.73
1:B:404:VAL:HG21	1:B:411:VAL:HG23	1.71	0.73
1:B:336:LEU:HD11	1:B:403:LEU:HG	1.74	0.68
1:A:591:GLN:HG2	1:A:592:TYR:H	1.58	0.68
1:B:710:VAL:HG12	1:B:716:LEU:HB2	1.76	0.67
1:B:190:GLN:NE2	8:B:904:HOH:O	2.28	0.65
1:B:152:GLN:NE2	1:B:742:ARG:HE	1.93	0.65
1:A:660:GLU:HG2	1:A:662:ASN:HB3	1.79	0.63
5:B:809:GOL:O3	8:B:902:HOH:O	2.10	0.62
1:A:177:ASP:OD1	1:A:178:LEU:N	2.32	0.60
1:A:510:ARG:NH2	1:A:553:PRO:O	2.34	0.60
1:A:756:ALA:HA	1:A:761:LEU:HD23	1.84	0.59
1:A:420:ASP:OD2	1:A:422:ARG:NH2	2.36	0.58
1:B:250:PRO:HB3	1:B:272:ARG:HD3	1.84	0.58
1:A:307:LEU:HD13	1:A:309:LEU:HD11	1.84	0.58
1:B:565:GLN:CD	1:B:588:LYS:HD2	2.30	0.57
1:A:347:HIS:ND1	8:A:904:HOH:O	2.33	0.57
1:A:525:ARG:HD2	3:A:808:EDO:H22	1.88	0.56
1:A:553:PRO:HG2	1:A:557:LEU:HD23	1.88	0.56
1:A:579:ASN:OD1	1:A:624:VAL:HG13	2.06	0.56
1:B:405:GLY:O	1:B:406:ASN:ND2	2.40	0.55
1:A:314:GLU:HA	1:A:314:GLU:OE2	2.06	0.54
1:B:296:ASP:OD2	5:B:808:GOL:H31	2.07	0.53
1:A:439:LEU:HD23	1:A:504:LEU:CD2	2.39	0.53
1:A:657:ILE:O	1:A:679:ARG:HG2	2.09	0.53
1:A:563:TYR:OH	1:A:590:GLU:OE2	2.22	0.52

Continued on next page...

Continued from previous page...

Atom-1	Atom-2	Interatomic distance (Å)	Clash overlap (Å)
1:A:672:LYS:HB3	1:A:714:ASN:OD1	2.10	0.51
1:A:439:LEU:CD2	1:A:504:LEU:HD22	2.41	0.51
1:B:177:ASP:OD1	1:B:178:LEU:N	2.41	0.51
1:B:204:PRO:HG2	1:B:209:PRO:HD3	1.93	0.50
1:B:664:THR:HG23	1:B:670:GLU:HG2	1.93	0.50
1:A:421:ARG:NH1	1:A:452:GLU:OE1	2.44	0.50
1:B:664:THR:OG1	1:B:665:GLY:N	2.43	0.50
1:B:212:PHE:O	1:B:244:LYS:HG3	2.12	0.50
1:A:263:GLN:HG3	1:A:292:ASP:O	2.11	0.49
1:B:565:GLN:OE1	1:B:588:LYS:HD2	2.13	0.48
1:B:553:PRO:HG2	1:B:557:LEU:HD23	1.94	0.48
1:B:352:LYS:HE2	5:B:808:GOL:H12	1.94	0.48
1:A:248:ASP:OD2	1:A:278:ASN:ND2	2.38	0.48
3:A:801:EDO:H12	8:A:909:HOH:O	2.15	0.47
1:B:366:ASP:OD2	1:B:392:SER:HB2	2.14	0.47
1:B:610:PHE:CZ	1:B:657:ILE:HD12	2.50	0.47
1:A:416:ARG:HD3	1:A:483:LEU:HD12	1.97	0.47
1:A:754:TRP:HB3	1:A:761:LEU:HD22	1.97	0.47
1:A:439:LEU:HD23	1:A:504:LEU:HD22	1.97	0.46
1:B:152:GLN:HE21	1:B:742:ARG:HE	1.60	0.46
1:B:649:ARG:HH22	1:B:689:ASP:CG	2.24	0.46
1:B:692:PHE:HB2	1:B:693:VAL:HG23	1.98	0.45
1:B:610:PHE:HZ	1:B:657:ILE:HD12	1.80	0.45
1:B:422:ARG:HH21	1:B:453:ARG:NH1	2.15	0.45
1:B:603:PHE:HB2	1:B:641:TYR:O	2.17	0.44
1:B:513:VAL:HG22	1:B:549:VAL:HG23	1.99	0.44
1:B:672:LYS:HB3	1:B:714:ASN:OD1	2.17	0.44
1:B:519:ARG:NH1	1:B:541:HIS:CG	2.85	0.44
1:A:185:ARG:NH1	1:A:591:GLN:OE1	2.51	0.44
1:B:551:VAL:HG23	1:B:553:PRO:HD3	2.00	0.44
1:A:185:ARG:HG2	1:A:610:PHE:CZ	2.52	0.43
1:B:664:THR:HG21	1:B:669:SER:OG	2.18	0.43
1:B:381:LEU:HD12	1:B:381:LEU:HA	1.84	0.43
1:A:539:LYS:C	1:A:540:ARG:HG2	2.42	0.43
3:B:805:EDO:H22	8:B:1022:HOH:O	2.19	0.43
1:B:358:ARG:NH1	1:B:472:SER:O	2.50	0.43
1:A:591:GLN:HG2	1:A:592:TYR:N	2.30	0.43
1:B:349:PRO:HB3	1:B:469:TYR:CD1	2.53	0.43
1:A:692:PHE:CD1	1:A:693:VAL:HG23	2.53	0.43
1:B:641:TYR:HA	1:B:650:VAL:O	2.19	0.43
1:A:189:VAL:HA	1:A:234:SER:HB3	2.00	0.43

Continued on next page...

Continued from previous page...

Atom-1	Atom-2	Interatomic distance (Å)	Clash overlap (Å)
1:A:322:LEU:HB3	4:A:802:C8E:H62	2.00	0.43
1:B:387:ILE:HG22	4:B:804:C8E:H141	2.01	0.42
1:A:415:ALA:HB2	1:A:460:PHE:CD2	2.55	0.42
1:B:129:MET:O	1:B:431:ARG:NH2	2.45	0.42
1:A:660:GLU:OE1	8:A:902:HOH:O	2.22	0.42
1:A:607:LEU:HD12	1:A:637:GLU:O	2.19	0.41
1:B:663:LYS:HB2	1:B:663:LYS:HE3	1.77	0.41
1:A:439:LEU:HD23	1:A:504:LEU:HD23	2.03	0.41
1:B:649:ARG:HB2	1:B:687:SER:HB3	2.02	0.41
1:B:129:MET:HE3	1:B:446:SER:HB3	2.03	0.41
1:B:151:GLU:OE2	8:B:903:HOH:O	2.22	0.41
1:A:555:GLN:CD	1:A:555:GLN:H	2.28	0.41
1:B:180:ASP:OD2	1:B:207:ARG:NE	2.39	0.41
1:B:387:ILE:HD11	1:B:424:TYR:HE2	1.85	0.41
1:B:561:ALA:HB2	1:B:594:ILE:HG22	2.03	0.41
1:B:740:VAL:O	1:B:773:LEU:HD12	2.20	0.41
1:A:279:ALA:HA	1:A:312:ARG:HG3	2.02	0.41
1:A:626:ARG:HD2	1:A:628:ASP:OD2	2.21	0.41
1:B:185:ARG:NE	1:B:220:LYS:HB3	2.36	0.41
1:B:371:ASN:HB3	4:B:804:C8E:O9	2.21	0.41
1:A:152:GLN:HA	1:A:742:ARG:HE	1.86	0.40
1:B:701:ARG:HG3	3:B:805:EDO:H12	2.03	0.40
1:A:637:GLU:HG2	1:A:655:THR:CG2	2.44	0.40
1:B:751:LYS:HE2	8:B:944:HOH:O	2.21	0.40

There are no symmetry-related clashes.

5.3 Torsion angles [i](#)

5.3.1 Protein backbone [i](#)

In the following table, the Percentiles column shows the percent Ramachandran outliers of the chain as a percentile score with respect to all X-ray entries followed by that with respect to entries of similar resolution.

The Analysed column shows the number of residues for which the backbone conformation was analysed, and the total number of residues.

Mol	Chain	Analysed	Favoured	Allowed	Outliers	Percentiles
1	A	668/780 (86%)	644 (96%)	23 (3%)	1 (0%)	48 70

Continued on next page...

Continued from previous page...

Mol	Chain	Analysed	Favoured	Allowed	Outliers	Percentiles	
1	B	668/780 (86%)	639 (96%)	26 (4%)	3 (0%)	30	51
All	All	1336/1560 (86%)	1283 (96%)	49 (4%)	4 (0%)	36	58

All (4) Ramachandran outliers are listed below:

Mol	Chain	Res	Type
1	A	545	PRO
1	B	545	PRO
1	B	620	ASP
1	B	260	GLN

5.3.2 Protein sidechains ⓘ

In the following table, the Percentiles column shows the percent sidechain outliers of the chain as a percentile score with respect to all X-ray entries followed by that with respect to entries of similar resolution.

The Analysed column shows the number of residues for which the sidechain conformation was analysed, and the total number of residues.

Mol	Chain	Analysed	Rotameric	Outliers	Percentiles	
1	A	535/612 (87%)	535 (100%)	0	100	100
1	B	535/612 (87%)	535 (100%)	0	100	100
All	All	1070/1224 (87%)	1070 (100%)	0	100	100

There are no protein residues with a non-rotameric sidechain to report.

Sometimes sidechains can be flipped to improve hydrogen bonding and reduce clashes. All (12) such sidechains are listed below:

Mol	Chain	Res	Type
1	B	152	GLN
1	B	260	GLN
1	B	344	HIS
1	B	555	GLN
1	B	661	GLN
1	A	132	ASN
1	A	154	GLN
1	A	263	GLN
1	A	433	ASN
1	A	448	ASN

Continued on next page...

Continued from previous page...

Mol	Chain	Res	Type
1	A	474	HIS
1	A	541	HIS

5.3.3 RNA ⓘ

There are no RNA molecules in this entry.

5.4 Non-standard residues in protein, DNA, RNA chains ⓘ

There are no non-standard protein/DNA/RNA residues in this entry.

5.5 Carbohydrates ⓘ

There are no oligosaccharides in this entry.

5.6 Ligand geometry ⓘ

Of 25 ligands modelled in this entry, 6 are monoatomic - leaving 19 for Mogul analysis.

In the following table, the Counts columns list the number of bonds (or angles) for which Mogul statistics could be retrieved, the number of bonds (or angles) that are observed in the model and the number of bonds (or angles) that are defined in the Chemical Component Dictionary. The Link column lists molecule types, if any, to which the group is linked. The Z score for a bond length (or angle) is the number of standard deviations the observed value is removed from the expected value. A bond length (or angle) with $|Z| > 2$ is considered an outlier worth inspection. RMSZ is the root-mean-square of all Z scores of the bond lengths (or angles).

Mol	Type	Chain	Res	Link	Bond lengths			Bond angles		
					Counts	RMSZ	$\# Z > 2$	Counts	RMSZ	$\# Z > 2$
3	EDO	A	803	-	3,3,3	0.46	0	2,2,2	0.62	0
2	A1IJR	B	801	6	50,50,50	0.66	1 (2%)	63,65,65	1.05	3 (4%)
4	C8E	B	803	-	14,14,20	0.55	0	13,13,19	0.32	0
2	A1IJR	A	809	6	50,50,50	0.66	1 (2%)	63,65,65	1.00	4 (6%)
4	C8E	A	804	-	14,14,20	0.42	0	13,13,19	0.41	0
3	EDO	B	805	-	3,3,3	0.54	0	2,2,2	0.27	0
3	EDO	A	808	-	3,3,3	0.45	0	2,2,2	0.61	0
4	C8E	A	802	-	14,14,20	0.34	0	13,13,19	0.52	0
4	C8E	B	804	-	14,14,20	0.40	0	13,13,19	0.49	0
5	GOL	B	809	-	5,5,5	1.18	0	5,5,5	0.94	0
3	EDO	A	805	-	3,3,3	0.38	0	2,2,2	0.46	0

Mol	Type	Chain	Res	Link	Bond lengths			Bond angles		
					Counts	RMSZ	# Z > 2	Counts	RMSZ	# Z > 2
5	GOL	B	808	-	5,5,5	0.86	0	5,5,5	1.06	0
3	EDO	B	806	-	3,3,3	0.43	0	2,2,2	0.52	0
3	EDO	A	801	-	3,3,3	0.37	0	2,2,2	0.54	0
5	GOL	A	810	-	5,5,5	0.93	0	5,5,5	1.10	0
3	EDO	B	802	-	3,3,3	0.52	0	2,2,2	0.33	0
3	EDO	A	807	-	3,3,3	0.43	0	2,2,2	0.28	0
3	EDO	B	807	-	3,3,3	0.51	0	2,2,2	0.82	0
3	EDO	A	806	-	3,3,3	0.43	0	2,2,2	0.52	0

In the following table, the Chirals column lists the number of chiral outliers, the number of chiral centers analysed, the number of these observed in the model and the number defined in the Chemical Component Dictionary. Similar counts are reported in the Torsion and Rings columns. '-' means no outliers of that kind were identified.

Mol	Type	Chain	Res	Link	Chirals	Torsions	Rings
3	EDO	A	803	-	-	1/1/1/1	-
2	A1IJR	B	801	6	-	16/42/42/42	0/4/4/4
4	C8E	B	803	-	-	6/12/12/18	-
2	A1IJR	A	809	6	-	15/42/42/42	0/4/4/4
4	C8E	A	804	-	-	8/12/12/18	-
3	EDO	B	805	-	-	1/1/1/1	-
3	EDO	A	808	-	-	0/1/1/1	-
4	C8E	A	802	-	-	9/12/12/18	-
4	C8E	B	804	-	-	10/12/12/18	-
5	GOL	B	809	-	-	0/4/4/4	-
3	EDO	A	805	-	-	0/1/1/1	-
5	GOL	B	808	-	-	4/4/4/4	-
3	EDO	B	806	-	-	0/1/1/1	-
3	EDO	A	801	-	-	1/1/1/1	-
5	GOL	A	810	-	-	0/4/4/4	-
3	EDO	B	802	-	-	0/1/1/1	-
3	EDO	A	807	-	-	0/1/1/1	-
3	EDO	B	807	-	-	0/1/1/1	-
3	EDO	A	806	-	-	1/1/1/1	-

All (2) bond length outliers are listed below:

Mol	Chain	Res	Type	Atoms	Z	Observed(Å)	Ideal(Å)
2	A	809	A1IJR	C10-C11	3.75	1.53	1.31
2	B	801	A1IJR	C10-C11	3.74	1.52	1.31

All (7) bond angle outliers are listed below:

Mol	Chain	Res	Type	Atoms	Z	Observed(°)	Ideal(°)
2	B	801	A1IJR	C32-C27-C26	4.41	124.81	120.23
2	A	809	A1IJR	C32-C27-C26	4.05	124.44	120.23
2	B	801	A1IJR	C22-C17-C16	2.91	123.25	120.23
2	A	809	A1IJR	C9-C10-C11	-2.55	116.85	126.21
2	A	809	A1IJR	C24-C23-N5	2.26	118.44	115.22
2	B	801	A1IJR	C9-C10-C11	-2.25	117.92	126.21
2	A	809	A1IJR	C12-C11-C10	-2.01	116.99	125.85

There are no chirality outliers.

All (72) torsion outliers are listed below:

Mol	Chain	Res	Type	Atoms
2	B	801	A1IJR	N3-C13-C14-C15
2	B	801	A1IJR	O4-C13-C14-C15
2	B	801	A1IJR	N5-C8-C9-C10
2	B	801	A1IJR	N5-C23-C24-C25
2	B	801	A1IJR	O6-C23-C24-C25
2	A	809	A1IJR	N3-C13-C14-C15
2	A	809	A1IJR	O4-C13-C14-C15
2	A	809	A1IJR	C7-C8-C9-C10
2	A	809	A1IJR	N5-C8-C9-C10
2	A	809	A1IJR	N5-C23-C24-C25
2	A	809	A1IJR	O6-C23-C24-C25
5	B	808	GOL	C1-C2-C3-O3
4	B	803	C8E	O9-C10-C11-O12
4	A	802	C8E	O9-C10-C11-O12
2	A	809	A1IJR	O4-C13-C14-N4
2	A	809	A1IJR	O6-C23-C24-N6
4	B	803	C8E	C6-C7-C8-O9
2	B	801	A1IJR	N3-C13-C14-N4
2	B	801	A1IJR	N5-C23-C24-N6
2	A	809	A1IJR	N3-C13-C14-N4
2	A	809	A1IJR	N5-C23-C24-N6
4	B	803	C8E	O12-C13-C14-O15
4	A	802	C8E	C10-C11-O12-C13
5	B	808	GOL	O1-C1-C2-C3
4	B	804	C8E	O12-C13-C14-O15
4	A	802	C8E	O12-C13-C14-O15
4	A	804	C8E	O12-C13-C14-O15
4	B	804	C8E	C5-C6-C7-C8
4	B	804	C8E	C2-C3-C4-C5

Continued on next page...

Continued from previous page...

Mol	Chain	Res	Type	Atoms
5	B	808	GOL	O2-C2-C3-O3
4	A	802	C8E	C3-C4-C5-C6
4	A	804	C8E	C6-C7-C8-O9
4	B	804	C8E	C4-C5-C6-C7
2	B	801	A1IJR	O4-C13-C14-N4
2	B	801	A1IJR	O6-C23-C24-N6
4	A	804	C8E	O9-C10-C11-O12
4	A	802	C8E	C5-C6-C7-C8
4	B	804	C8E	C3-C4-C5-C6
3	A	801	EDO	O1-C1-C2-O2
4	A	802	C8E	C4-C5-C6-C7
4	A	804	C8E	C2-C3-C4-C5
4	A	804	C8E	C3-C4-C5-C6
4	A	802	C8E	C1-C2-C3-C4
4	A	802	C8E	C6-C7-C8-O9
4	B	804	C8E	C1-C2-C3-C4
4	B	804	C8E	C14-C13-O12-C11
2	B	801	A1IJR	C11-C12-N3-C13
4	B	803	C8E	C5-C6-C7-C8
4	B	803	C8E	C14-C13-O12-C11
4	B	803	C8E	C11-C10-O9-C8
2	A	809	A1IJR	O3-C7-C8-C9
3	B	805	EDO	O1-C1-C2-O2
2	B	801	A1IJR	C10-C11-C12-N3
2	B	801	A1IJR	O3-C7-C8-N5
2	B	801	A1IJR	C7-C8-C9-C10
4	B	804	C8E	C6-C7-C8-O9
2	A	809	A1IJR	C11-C12-N3-C13
4	A	804	C8E	C14-C13-O12-C11
2	A	809	A1IJR	N2-C7-C8-C9
4	B	804	C8E	O9-C10-C11-O12
2	A	809	A1IJR	C4-C3-O1-C2
2	B	801	A1IJR	N2-C7-C8-N5
2	A	809	A1IJR	N6-C26-C27-C32
5	B	808	GOL	O1-C1-C2-O2
2	B	801	A1IJR	C4-C3-O1-C2
4	A	802	C8E	C14-C13-O12-C11
4	B	804	C8E	C7-C8-O9-C10
4	A	804	C8E	C7-C8-O9-C10
3	A	806	EDO	O1-C1-C2-O2
4	A	804	C8E	C1-C2-C3-C4
2	B	801	A1IJR	O3-C7-C8-C9

Continued on next page...

Continued from previous page...

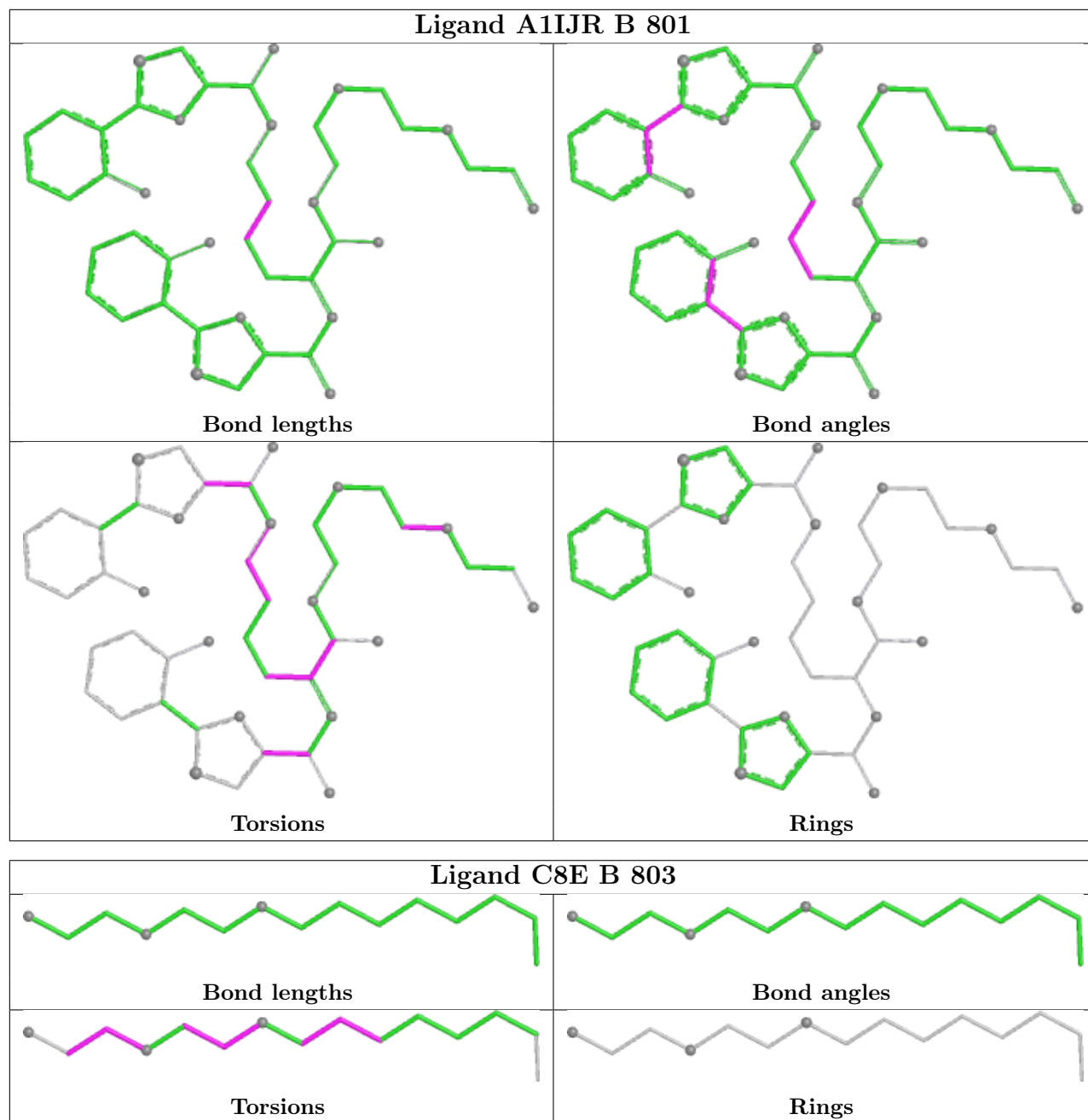
Mol	Chain	Res	Type	Atoms
3	A	803	EDO	O1-C1-C2-O2

There are no ring outliers.

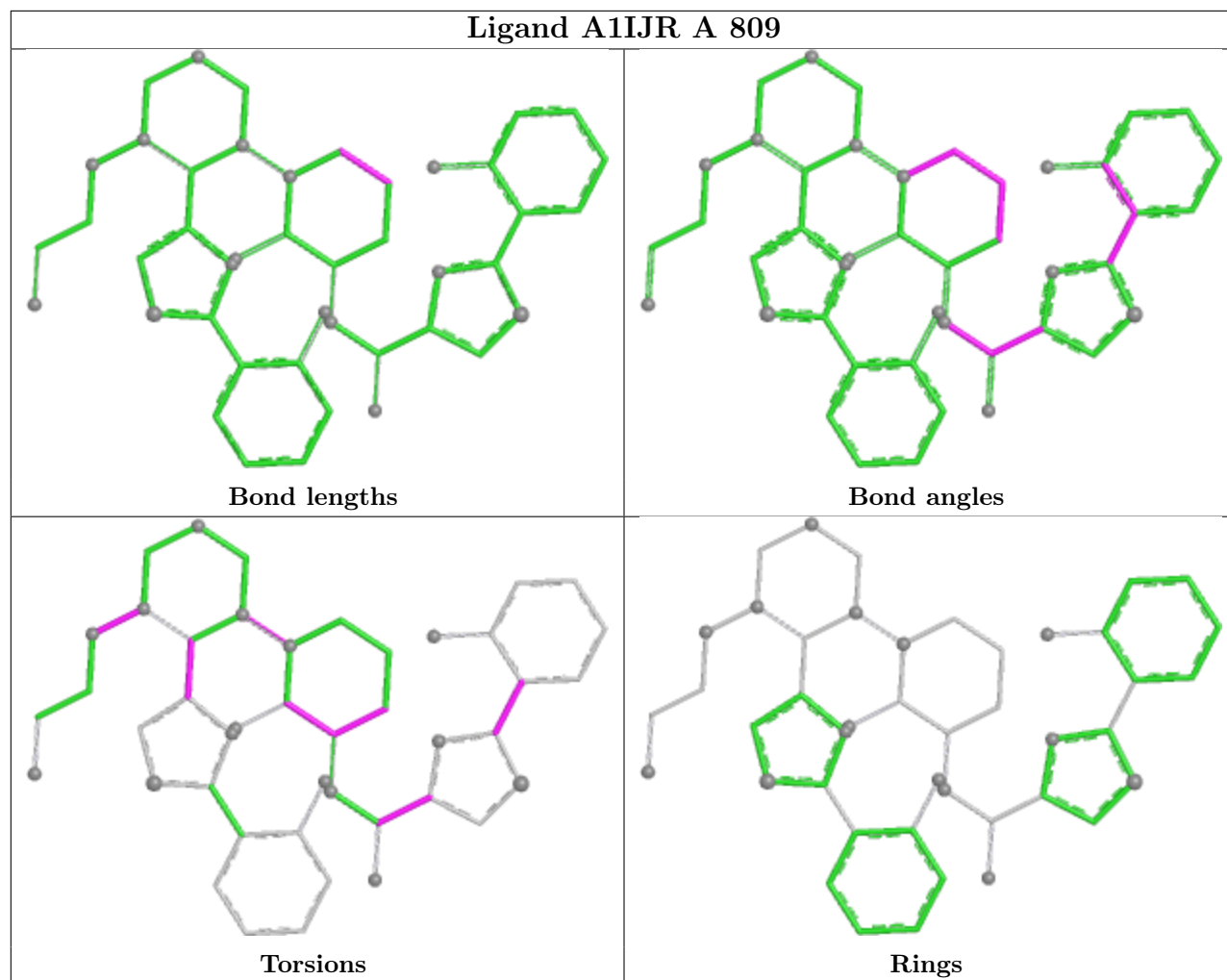
7 monomers are involved in 10 short contacts:

Mol	Chain	Res	Type	Clashes	Symm-Clashes
3	B	805	EDO	2	0
3	A	808	EDO	1	0
4	A	802	C8E	1	0
4	B	804	C8E	2	0
5	B	809	GOL	1	0
5	B	808	GOL	2	0
3	A	801	EDO	1	0

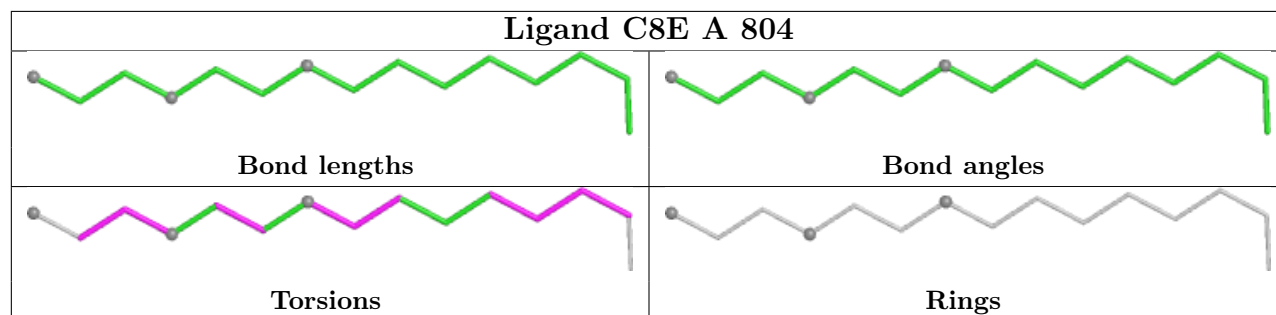
The following is a two-dimensional graphical depiction of Mogul quality analysis of bond lengths, bond angles, torsion angles, and ring geometry for all instances of the Ligand of Interest. In addition, ligands with molecular weight > 250 and outliers as shown on the validation Tables will also be included. For torsion angles, if less than 5% of the Mogul distribution of torsion angles is within 10 degrees of the torsion angle in question, then that torsion angle is considered an outlier. Any bond that is central to one or more torsion angles identified as an outlier by Mogul will be highlighted in the graph. For rings, the root-mean-square deviation (RMSD) between the ring in question and similar rings identified by Mogul is calculated over all ring torsion angles. If the average RMSD is greater than 60 degrees and the minimal RMSD between the ring in question and any Mogul-identified rings is also greater than 60 degrees, then that ring is considered an outlier. The outliers are highlighted in purple. The color gray indicates Mogul did not find sufficient equivalents in the CSD to analyse the geometry.



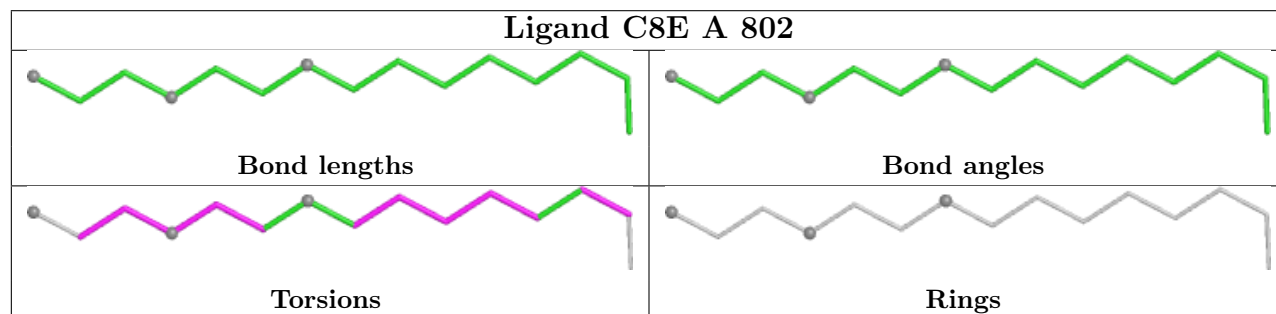
Ligand A1IJR A 809

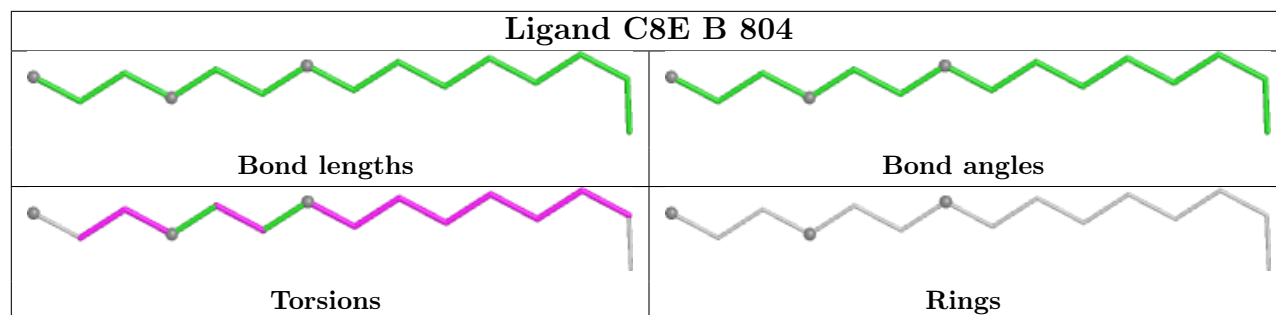


Ligand C8E A 804



Ligand C8E A 802





5.7 Other polymers [i](#)

There are no such residues in this entry.

5.8 Polymer linkage issues [i](#)

There are no chain breaks in this entry.

6 Fit of model and data [i](#)

6.1 Protein, DNA and RNA chains [i](#)

In the following table, the column labelled ‘#RSRZ> 2’ contains the number (and percentage) of RSRZ outliers, followed by percent RSRZ outliers for the chain as percentile scores relative to all X-ray entries and entries of similar resolution. The OWAB column contains the minimum, median, 95th percentile and maximum values of the occupancy-weighted average B-factor per residue. The column labelled ‘Q< 0.9’ lists the number of (and percentage) of residues with an average occupancy less than 0.9.

Mol	Chain	Analysed	<RSRZ>	#RSRZ>2	OWAB(Å ²)	Q<0.9
1	A	670/780 (85%)	-0.13	2 (0%) 90 88	25, 36, 59, 83	0
1	B	670/780 (85%)	-0.20	2 (0%) 90 88	24, 36, 58, 75	0
All	All	1340/1560 (85%)	-0.17	4 (0%) 90 88	24, 36, 59, 83	0

All (4) RSRZ outliers are listed below:

Mol	Chain	Res	Type	RSRZ
1	B	424	TYR	2.7
1	A	506	PHE	2.4
1	B	621	ALA	2.2
1	A	438	PRO	2.1

6.2 Non-standard residues in protein, DNA, RNA chains [i](#)

There are no non-standard protein/DNA/RNA residues in this entry.

6.3 Carbohydrates [i](#)

There are no oligosaccharides in this entry.

6.4 Ligands [i](#)

In the following table, the Atoms column lists the number of modelled atoms in the group and the number defined in the chemical component dictionary. The B-factors column lists the minimum, median, 95th percentile and maximum values of B factors of atoms in the group. The column labelled ‘Q< 0.9’ lists the number of atoms with occupancy less than 0.9.

Mol	Type	Chain	Res	Atoms	RSCC	RSR	B-factors(Å ²)	Q<0.9
4	C8E	A	804	15/21	0.85	0.14	32,45,56,56	0

Continued on next page...

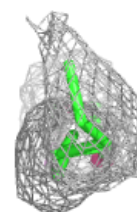
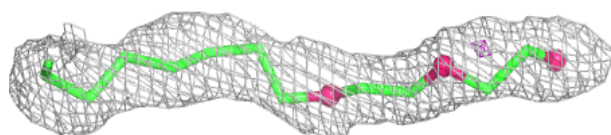
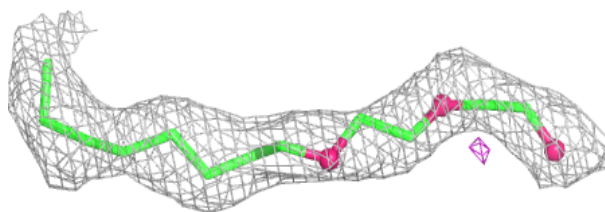
Continued from previous page...

Mol	Type	Chain	Res	Atoms	RSCC	RSR	B-factors(\AA^2)	Q<0.9
4	C8E	B	803	15/21	0.86	0.12	23,41,51,54	0
7	K	A	813	1/1	0.89	0.18	59,59,59,59	0
3	EDO	B	805	4/4	0.91	0.15	32,34,34,37	0
4	C8E	B	804	15/21	0.91	0.11	34,39,47,49	0
5	GOL	B	809	6/6	0.92	0.11	43,45,48,50	0
3	EDO	B	807	4/4	0.92	0.14	31,36,36,37	0
3	EDO	A	806	4/4	0.94	0.09	31,34,35,42	0
3	EDO	A	807	4/4	0.94	0.08	39,46,48,48	0
4	C8E	A	802	15/21	0.94	0.09	25,34,44,48	0
2	A1IJR	A	809	47/47	0.95	0.10	27,39,62,67	0
2	A1IJR	B	801	47/47	0.95	0.10	28,36,59,61	0
5	GOL	A	810	6/6	0.95	0.10	46,49,50,53	0
7	K	A	812	1/1	0.95	0.09	61,61,61,61	0
3	EDO	B	806	4/4	0.95	0.11	27,42,43,44	0
3	EDO	A	808	4/4	0.96	0.08	36,37,44,44	0
7	K	B	811	1/1	0.96	0.12	56,56,56,56	0
5	GOL	B	808	6/6	0.96	0.10	38,41,47,50	0
3	EDO	B	802	4/4	0.96	0.08	34,35,36,39	0
3	EDO	A	803	4/4	0.97	0.11	29,33,33,35	0
3	EDO	A	805	4/4	0.97	0.07	30,31,31,33	0
3	EDO	A	801	4/4	0.97	0.07	32,33,34,34	0
7	K	B	812	1/1	0.98	0.21	55,55,55,55	0
6	FE	B	810	1/1	1.00	0.01	33,33,33,33	0
6	FE	A	811	1/1	1.00	0.03	38,38,38,38	0

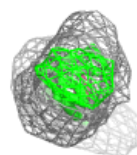
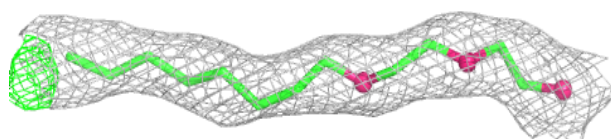
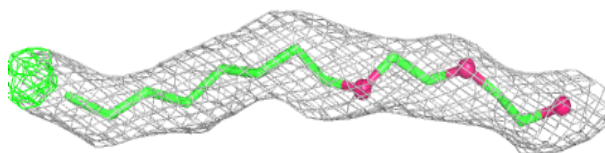
The following is a graphical depiction of the model fit to experimental electron density of all instances of the Ligand of Interest. In addition, ligands with molecular weight > 250 and outliers as shown on the geometry validation Tables will also be included. Each fit is shown from different orientation to approximate a three-dimensional view.

Electron density around C8E A 804:

$2mF_o-DF_c$ (at 0.7 rmsd) in gray
 mF_o-DF_c (at 3 rmsd) in purple (negative)
and green (positive)

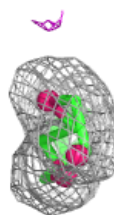
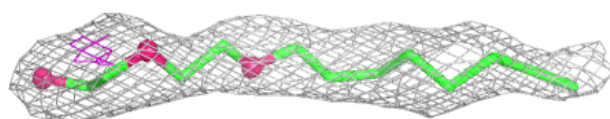
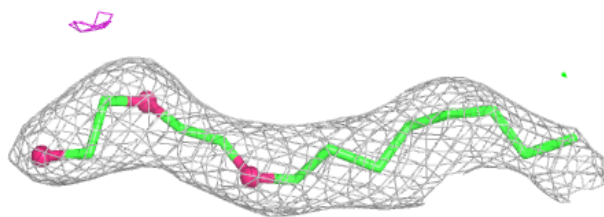
**Electron density around C8E B 803:**

$2mF_o-DF_c$ (at 0.7 rmsd) in gray
 mF_o-DF_c (at 3 rmsd) in purple (negative)
and green (positive)

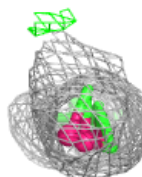
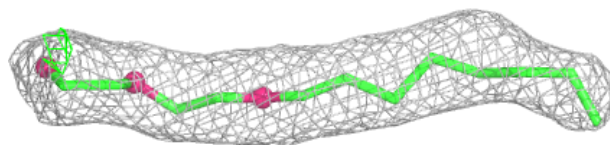
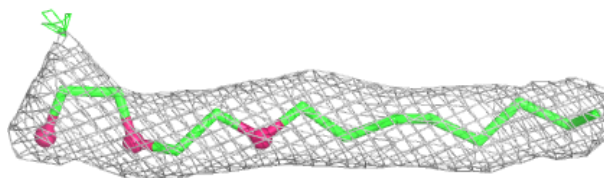


Electron density around C8E B 804:

$2mF_o-DF_c$ (at 0.7 rmsd) in gray
 mF_o-DF_c (at 3 rmsd) in purple (negative)
and green (positive)

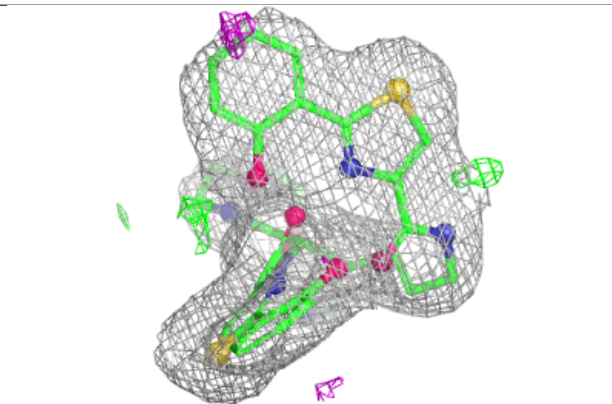
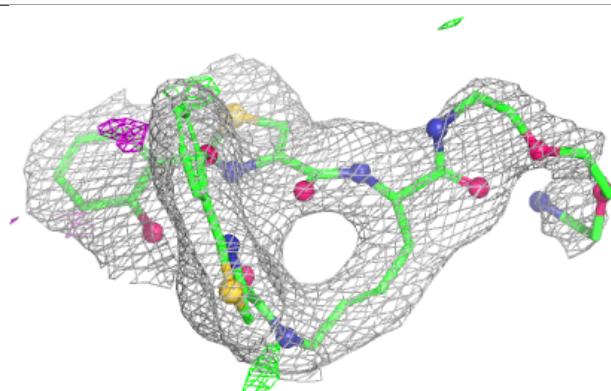
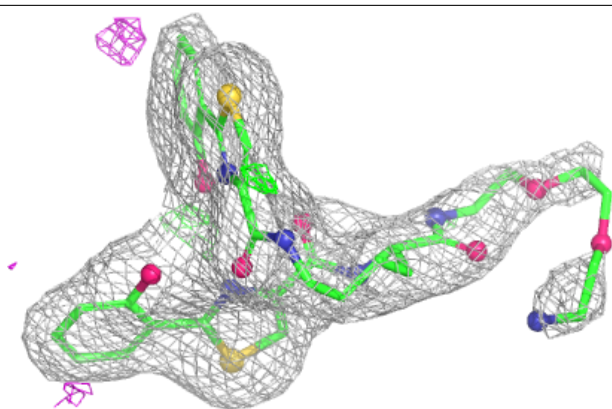
**Electron density around C8E A 802:**

$2mF_o-DF_c$ (at 0.7 rmsd) in gray
 mF_o-DF_c (at 3 rmsd) in purple (negative)
and green (positive)

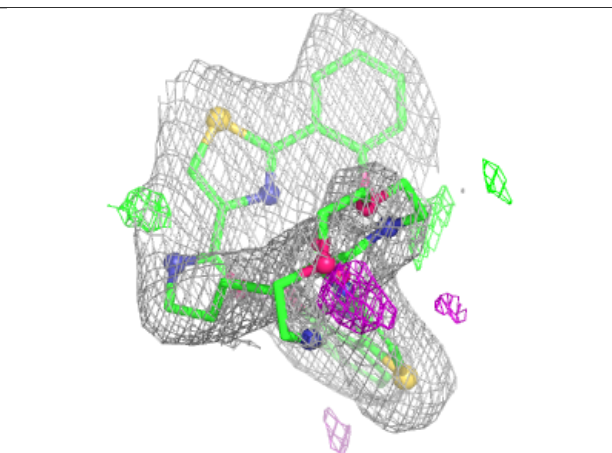
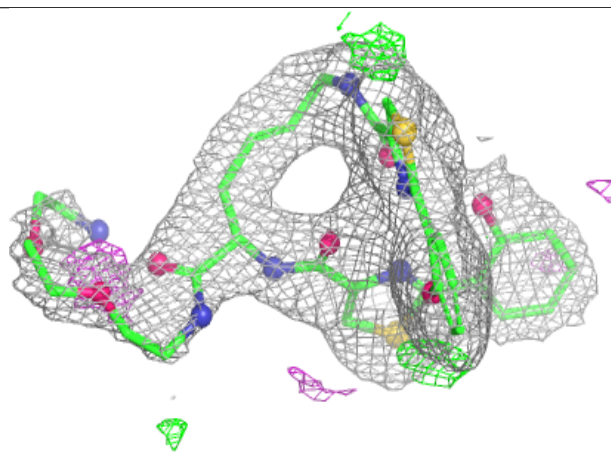
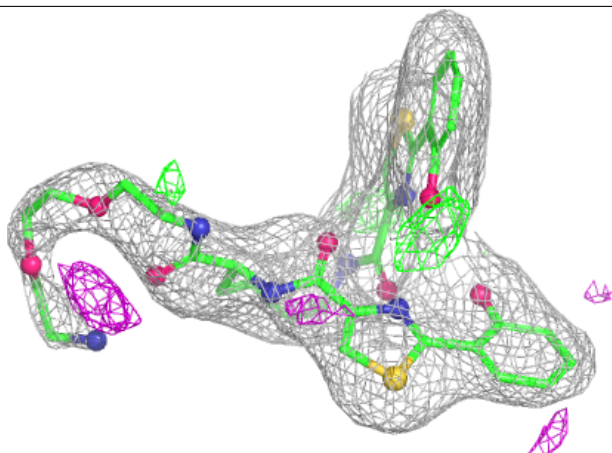


Electron density around A1IJR A 809:

$2mF_o-DF_c$ (at 0.7 rmsd) in gray
 mF_o-DF_c (at 3 rmsd) in purple (negative)
and green (positive)

**Electron density around A1IJR B 801:**

$2mF_o-DF_c$ (at 0.7 rmsd) in gray
 mF_o-DF_c (at 3 rmsd) in purple (negative)
and green (positive)



6.5 Other polymers [i](#)

There are no such residues in this entry.