



# Full wwPDB X-ray Structure Validation Report ⓘ

Mar 8, 2026 – 03:51 AM UTC

PDB ID : 9GAD / pdb\_00009gad  
Title : Structure and catalytic mechanism of SAM-AMP lyase in Clostridium botulinum CorA-associated type III CRISPR system  
Authors : McMahon, S.A.; Gloster, T.M.; White, M.F.; Graham, S.; Chi, H.  
Deposited on : 2024-07-26  
Resolution : 1.70 Å(reported)

This is a Full wwPDB X-ray Structure Validation Report for a publicly released PDB entry.

We welcome your comments at [validation@mail.wwpdb.org](mailto:validation@mail.wwpdb.org)

A user guide is available at

<https://www.wwpdb.org/validation/2017/XrayValidationReportHelp>

with specific help available everywhere you see the ⓘ symbol.

The types of validation reports are described at

<http://www.wwpdb.org/validation/2017/FAQs#types>.

---

The following versions of software and data (see [references ⓘ](#)) were used in the production of this report:

MolProbity	:	4-5-2 with Phenix2.0
Mogul	:	2022.3.0, CSD as543be (2022)
Xtriage (Phenix)	:	2.0
EDS	:	3.0
Percentile statistics	:	20250101.v01 (using entries in the PDB archive January 1st 2025)
CCP4	:	9.0.010 (Gargrove)
Density-Fitness	:	1.0.12
Ideal geometry (proteins)	:	Engh & Huber (2001)
Ideal geometry (DNA, RNA)	:	Parkinson et al. (1996)
Validation Pipeline (wwPDB-VP)	:	2.49

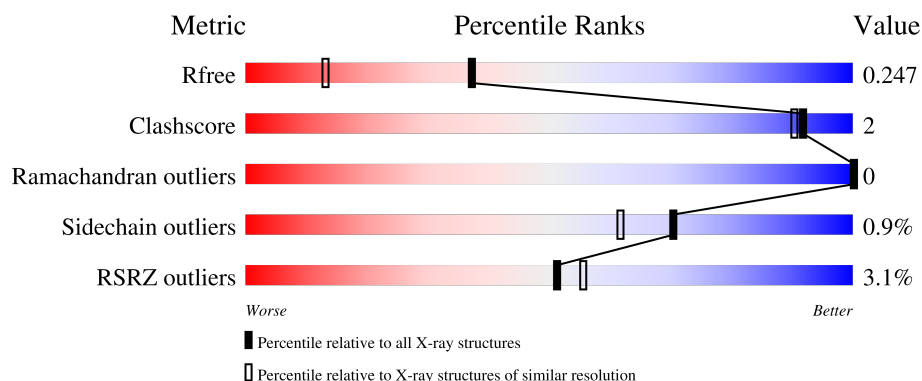
# 1 Overall quality at a glance

The following experimental techniques were used to determine the structure:

## *X-RAY DIFFRACTION*

The reported resolution of this entry is 1.70 Å.

Percentile scores (ranging between 0-100) for global validation metrics of the entry are shown in the following graphic. The table shows the number of entries on which the scores are based.



Metric	Whole archive (#Entries)	Similar resolution (#Entries, resolution range(Å))
$R_{free}$	180053	5551 (1.70-1.70)
Clashscore	190562	5924 (1.70-1.70)
Ramachandran outliers	187476	5846 (1.70-1.70)
Sidechain outliers	187428	5846 (1.70-1.70)
RSRZ outliers	180081	5554 (1.70-1.70)

The table below summarises the geometric issues observed across the polymeric chains and their fit to the electron density. The red, orange, yellow and green segments of the lower bar indicate the fraction of residues that contain outliers for  $\geq 3$ , 2, 1 and 0 types of geometric quality criteria respectively. A grey segment represents the fraction of residues that are not modelled. The numeric value for each fraction is indicated below the corresponding segment, with a dot representing fractions  $\leq 5\%$ . The upper red bar (where present) indicates the fraction of residues that have poor fit to the electron density. The numeric value is given above the bar.

Mol	Chain	Length	Quality of chain
1	A	131	<div> <div>2%</div> <div> <div></div> <div>91%</div> <div>6%</div> </div> </div>
1	B	131	<div> <div>3%</div> <div> <div></div> <div>91%</div> <div>6%</div> </div> </div>
1	C	131	<div> <div>0%</div> <div> <div></div> <div>88%</div> <div>6%</div> <div>6%</div> </div> </div>
1	D	131	<div> <div>4%</div> <div> <div></div> <div>97%</div> <div>6%</div> </div> </div>
1	E	131	<div> <div>5%</div> <div> <div></div> <div>91%</div> <div>7%</div> </div> </div>

*Continued on next page...*

Continued from previous page...

Mol	Chain	Length	Quality of chain
1	F	131	<div><div></div><div>3%</div><div>94%</div><div></div><div></div></div>

## 2 Entry composition

There are 3 unique types of molecules in this entry. The entry contains 6249 atoms, of which 0 are hydrogens and 0 are deuteriums.

In the tables below, the ZeroOcc column contains the number of atoms modelled with zero occupancy, the AltConf column contains the number of residues with at least one atom in alternate conformation and the Trace column contains the number of residues modelled with at most 2 atoms.

- Molecule 1 is a protein called SAM-AMP Lyase.

Mol	Chain	Residues	Atoms					ZeroOcc	AltConf	Trace
1	A	123	Total	C	N	O	S	0	2	0
			990	634	159	194	3			
1	B	123	Total	C	N	O	S	0	2	0
			983	630	155	195	3			
1	C	123	Total	C	N	O	S	0	1	0
			974	620	156	195	3			
1	D	130	Total	C	N	O	S	0	0	0
			1033	655	168	205	5			
1	E	122	Total	C	N	O	S	0	1	0
			971	618	155	195	3			
1	F	127	Total	C	N	O	S	0	3	0
			1020	649	163	203	5			

There are 42 discrepancies between the modelled and reference sequences:

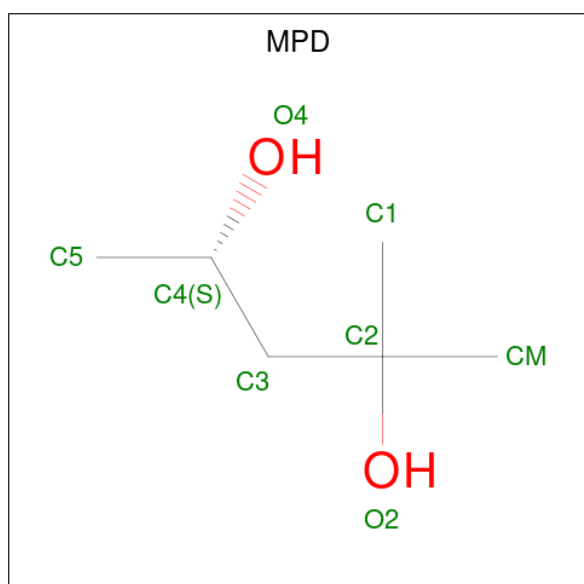
Chain	Residue	Modelled	Actual	Comment	Reference
A	-6	GLY	-	expression tag	UNP A5I3U9
A	-5	ALA	-	expression tag	UNP A5I3U9
A	-4	ASN	-	expression tag	UNP A5I3U9
A	-3	ALA	-	expression tag	UNP A5I3U9
A	-2	MET	-	expression tag	UNP A5I3U9
A	-1	ALA	-	expression tag	UNP A5I3U9
A	0	HIS	-	expression tag	UNP A5I3U9
B	-6	GLY	-	expression tag	UNP A5I3U9
B	-5	ALA	-	expression tag	UNP A5I3U9
B	-4	ASN	-	expression tag	UNP A5I3U9
B	-3	ALA	-	expression tag	UNP A5I3U9
B	-2	MET	-	expression tag	UNP A5I3U9
B	-1	ALA	-	expression tag	UNP A5I3U9
B	0	HIS	-	expression tag	UNP A5I3U9
C	-6	GLY	-	expression tag	UNP A5I3U9
C	-5	ALA	-	expression tag	UNP A5I3U9
C	-4	ASN	-	expression tag	UNP A5I3U9

*Continued on next page...*

Continued from previous page...

Chain	Residue	Modelled	Actual	Comment	Reference
C	-3	ALA	-	expression tag	UNP A5I3U9
C	-2	MET	-	expression tag	UNP A5I3U9
C	-1	ALA	-	expression tag	UNP A5I3U9
C	0	HIS	-	expression tag	UNP A5I3U9
D	-6	GLY	-	expression tag	UNP A5I3U9
D	-5	ALA	-	expression tag	UNP A5I3U9
D	-4	ASN	-	expression tag	UNP A5I3U9
D	-3	ALA	-	expression tag	UNP A5I3U9
D	-2	MET	-	expression tag	UNP A5I3U9
D	-1	ALA	-	expression tag	UNP A5I3U9
D	0	HIS	-	expression tag	UNP A5I3U9
E	-6	GLY	-	expression tag	UNP A5I3U9
E	-5	ALA	-	expression tag	UNP A5I3U9
E	-4	ASN	-	expression tag	UNP A5I3U9
E	-3	ALA	-	expression tag	UNP A5I3U9
E	-2	MET	-	expression tag	UNP A5I3U9
E	-1	ALA	-	expression tag	UNP A5I3U9
E	0	HIS	-	expression tag	UNP A5I3U9
F	-6	GLY	-	expression tag	UNP A5I3U9
F	-5	ALA	-	expression tag	UNP A5I3U9
F	-4	ASN	-	expression tag	UNP A5I3U9
F	-3	ALA	-	expression tag	UNP A5I3U9
F	-2	MET	-	expression tag	UNP A5I3U9
F	-1	ALA	-	expression tag	UNP A5I3U9
F	0	HIS	-	expression tag	UNP A5I3U9

- Molecule 2 is (4S)-2-METHYL-2,4-PENTANEDIOL (CCD ID: MPD) (formula: C<sub>6</sub>H<sub>14</sub>O<sub>2</sub>).



Mol	Chain	Residues	Atoms	ZeroOcc	AltConf
2	A	1	Total C O 8 6 2	0	0
2	A	1	Total C O 8 6 2	0	0
2	B	1	Total C O 8 6 2	0	0
2	B	1	Total C O 8 6 2	0	0
2	B	1	Total C O 8 6 2	0	0
2	C	1	Total C O 8 6 2	0	0
2	F	1	Total C O 8 6 2	0	0

- Molecule 3 is water.

Mol	Chain	Residues	Atoms	ZeroOcc	AltConf
3	A	51	Total O 51 51	0	0
3	B	41	Total O 41 41	0	0
3	C	38	Total O 38 38	0	0
3	D	30	Total O 30 30	0	0
3	E	29	Total O 29 29	0	0
3	F	33	Total O 33 33	0	0

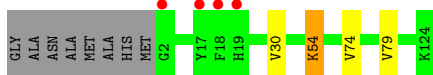
### 3 Residue-property plots [i](#)

These plots are drawn for all protein, RNA, DNA and oligosaccharide chains in the entry. The first graphic for a chain summarises the proportions of the various outlier classes displayed in the second graphic. The second graphic shows the sequence view annotated by issues in geometry and electron density. Residues are color-coded according to the number of geometric quality criteria for which they contain at least one outlier: green = 0, yellow = 1, orange = 2 and red = 3 or more. A red dot above a residue indicates a poor fit to the electron density ( $RSRZ > 2$ ). Stretches of 2 or more consecutive residues without any outlier are shown as a green connector. Residues present in the sample, but not in the model, are shown in grey.

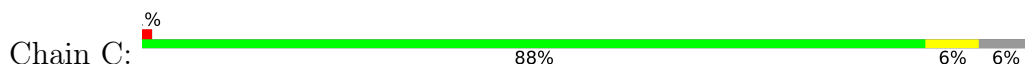
- Molecule 1: SAM-AMP Lyase



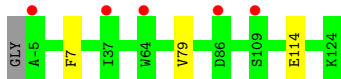
- Molecule 1: SAM-AMP Lyase



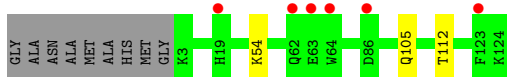
- Molecule 1: SAM-AMP Lyase



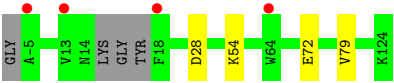
- Molecule 1: SAM-AMP Lyase



- Molecule 1: SAM-AMP Lyase



- Molecule 1: SAM-AMP Lyase





## 4 Data and refinement statistics

Property	Value	Source
Space group	P 1	Depositor
Cell constants a, b, c, $\alpha$ , $\beta$ , $\gamma$	54.40Å 55.40Å 81.66Å 75.74° 72.01° 60.82°	Depositor
Resolution (Å)	48.09 – 1.70 48.09 – 1.70	Depositor EDS
% Data completeness (in resolution range)	97.6 (48.09-1.70) 97.6 (48.09-1.70)	Depositor EDS
$R_{merge}$	(Not available)	Depositor
$R_{sym}$	(Not available)	Depositor
$\langle I/\sigma(I) \rangle$ <sup>1</sup>	1.65 (at 1.70Å)	Xtriage
Refinement program	REFMAC 5.8.0419	Depositor
R, $R_{free}$	0.209 , 0.236 0.217 , 0.247	Depositor DCC
$R_{free}$ test set	4259 reflections (4.92%)	wwPDB-VP
Wilson B-factor (Å <sup>2</sup> )	36.4	Xtriage
Anisotropy	0.042	Xtriage
Bulk solvent $k_{sol}$ (e/Å <sup>3</sup> ), $B_{sol}$ (Å <sup>2</sup> )	0.35 , 36.2	EDS
L-test for twinning <sup>2</sup>	$\langle  L  \rangle = 0.51$ , $\langle L^2 \rangle = 0.34$	Xtriage
Estimated twinning fraction	0.011 for h,h-k,h-l	Xtriage
$F_o, F_c$ correlation	0.96	EDS
Total number of atoms	6249	wwPDB-VP
Average B, all atoms (Å <sup>2</sup> )	42.0	wwPDB-VP

Xtriage's analysis on translational NCS is as follows: *The largest off-origin peak in the Patterson function is 7.87% of the height of the origin peak. No significant pseudotranslation is detected.*

<sup>1</sup>Intensities estimated from amplitudes.

<sup>2</sup>Theoretical values of  $\langle |L| \rangle$ ,  $\langle L^2 \rangle$  for acentric reflections are 0.5, 0.333 respectively for untwinned datasets, and 0.375, 0.2 for perfectly twinned datasets.

## 5 Model quality [i](#)

### 5.1 Standard geometry [i](#)

Bond lengths and bond angles in the following residue types are not validated in this section: MPD

The Z score for a bond length (or angle) is the number of standard deviations the observed value is removed from the expected value. A bond length (or angle) with  $|Z| > 5$  is considered an outlier worth inspection. RMSZ is the root-mean-square of all Z scores of the bond lengths (or angles).

Mol	Chain	Bond lengths		Bond angles	
		RMSZ	$\# Z  > 5$	RMSZ	$\# Z  > 5$
1	A	0.65	0/1015	0.93	1/1369 (0.1%)
1	B	0.60	0/1007	0.89	0/1361
1	C	0.62	0/994	0.93	0/1342
1	D	0.63	0/1051	0.98	0/1414
1	E	0.61	0/991	0.91	0/1337
1	F	0.63	0/1043	0.98	1/1405 (0.1%)
All	All	0.62	0/6101	0.94	2/8228 (0.0%)

There are no bond length outliers.

All (2) bond angle outliers are listed below:

Mol	Chain	Res	Type	Atoms	Z	Observed(°)	Ideal(°)
1	F	72	GLU	CB-CG-CD	5.23	121.48	112.60
1	A	57	LYS	CB-CG-CD	5.01	122.83	111.30

There are no chirality outliers.

There are no planarity outliers.

### 5.2 Too-close contacts [i](#)

In the following table, the Non-H and H(model) columns list the number of non-hydrogen atoms and hydrogen atoms in the chain respectively. The H(added) column lists the number of hydrogen atoms added and optimized by MolProbity. The Clashes column lists the number of clashes within the asymmetric unit, whereas Symm-Clashes lists symmetry-related clashes.

Mol	Chain	Non-H	H(model)	H(added)	Clashes	Symm-Clashes
1	A	990	0	979	4	0
1	B	983	0	962	3	0
1	C	974	0	948	3	0

*Continued on next page...*

*Continued from previous page...*

Mol	Chain	Non-H	H(model)	H(added)	Clashes	Symm-Clashes
1	D	1033	0	1018	2	0
1	E	971	0	945	1	0
1	F	1020	0	1003	3	0
2	A	16	0	28	5	0
2	B	24	0	42	4	0
2	C	8	0	14	0	0
2	F	8	0	14	1	0
3	A	51	0	0	2	0
3	B	41	0	0	2	0
3	C	38	0	0	0	0
3	D	30	0	0	0	0
3	E	29	0	0	0	0
3	F	33	0	0	0	0
All	All	6249	0	5953	19	0

The all-atom clashscore is defined as the number of clashes found per 1000 atoms (including hydrogen atoms). The all-atom clashscore for this structure is 2.

All (19) close contacts within the same asymmetric unit are listed below, sorted by their clash magnitude.

Atom-1	Atom-2	Interatomic distance (Å)	Clash overlap (Å)
1:A:79:VAL:HG12	2:A:201:MPD:HM1	1.73	0.70
1:B:30:VAL:HG11	1:B:74:VAL:HG21	1.77	0.67
1:F:79:VAL:HG12	2:F:201:MPD:H11	1.85	0.58
1:C:30:VAL:HG11	1:C:74:VAL:HG21	1.85	0.58
1:B:79:VAL:HG12	2:B:203:MPD:HM1	1.84	0.58
2:A:201:MPD:HM2	3:A:345:HOH:O	2.04	0.56
1:A:57:LYS:NZ	1:F:28:ASP:OD1	2.30	0.53
1:A:79:VAL:CG1	2:A:201:MPD:HM1	2.39	0.52
2:B:202:MPD:HM1	1:D:79:VAL:HG12	1.93	0.51
1:A:61:ASN:HB3	1:A:64:TRP:HD1	1.77	0.50
1:B:54:LYS:HE3	3:B:340:HOH:O	2.16	0.46
2:A:201:MPD:HM3	2:A:201:MPD:O4	2.16	0.45
2:A:202:MPD:HM2	3:A:345:HOH:O	2.16	0.44
2:B:203:MPD:HM2	3:B:335:HOH:O	2.18	0.43
1:C:27:LEU:CD1	1:C:53:ILE:HG22	2.50	0.41
1:D:7:PHE:HA	1:D:114:GLU:O	2.20	0.41
1:F:54[A]:LYS:HE3	1:F:54[A]:LYS:HB2	1.86	0.41
2:B:203:MPD:HM3	1:E:112:THR:HG21	2.03	0.41
1:C:7:PHE:HA	1:C:114:GLU:O	2.21	0.40

There are no symmetry-related clashes.

## 5.3 Torsion angles [i](#)

### 5.3.1 Protein backbone [i](#)

In the following table, the Percentiles column shows the percent Ramachandran outliers of the chain as a percentile score with respect to all X-ray entries followed by that with respect to entries of similar resolution.

The Analysed column shows the number of residues for which the backbone conformation was analysed, and the total number of residues.

Mol	Chain	Analysed	Favoured	Allowed	Outliers	Percentiles	
1	A	123/131 (94%)	120 (98%)	3 (2%)	0	100	100
1	B	123/131 (94%)	120 (98%)	3 (2%)	0	100	100
1	C	122/131 (93%)	119 (98%)	3 (2%)	0	100	100
1	D	128/131 (98%)	125 (98%)	3 (2%)	0	100	100
1	E	121/131 (92%)	118 (98%)	3 (2%)	0	100	100
1	F	126/131 (96%)	123 (98%)	3 (2%)	0	100	100
All	All	743/786 (94%)	725 (98%)	18 (2%)	0	100	100

There are no Ramachandran outliers to report.

### 5.3.2 Protein sidechains [i](#)

In the following table, the Percentiles column shows the percent sidechain outliers of the chain as a percentile score with respect to all X-ray entries followed by that with respect to entries of similar resolution.

The Analysed column shows the number of residues for which the sidechain conformation was analysed, and the total number of residues.

Mol	Chain	Analysed	Rotameric	Outliers	Percentiles	
1	A	111/115 (96%)	110 (99%)	1 (1%)	70	62
1	B	109/115 (95%)	108 (99%)	1 (1%)	70	62
1	C	108/115 (94%)	106 (98%)	2 (2%)	50	34
1	D	114/115 (99%)	114 (100%)	0	100	100
1	E	108/115 (94%)	106 (98%)	2 (2%)	50	34
1	F	113/115 (98%)	113 (100%)	0	100	100

*Continued on next page...*

*Continued from previous page...*

Mol	Chain	Analysed	Rotameric	Outliers	Percentiles	
All	All	663/690 (96%)	657 (99%)	6 (1%)	70	62

All (6) residues with a non-rotameric sidechain are listed below:

Mol	Chain	Res	Type
1	A	57	LYS
1	B	54	LYS
1	C	3	LYS
1	C	54	LYS
1	E	54	LYS
1	E	105	GLN

Sometimes sidechains can be flipped to improve hydrogen bonding and reduce clashes. All (3) such sidechains are listed below:

Mol	Chain	Res	Type
1	A	69	ASN
1	B	69	ASN
1	E	69	ASN

### 5.3.3 RNA ⓘ

There are no RNA molecules in this entry.

## 5.4 Non-standard residues in protein, DNA, RNA chains ⓘ

There are no non-standard protein/DNA/RNA residues in this entry.

## 5.5 Carbohydrates ⓘ

There are no oligosaccharides in this entry.

## 5.6 Ligand geometry ⓘ

7 ligands are modelled in this entry.

In the following table, the Counts columns list the number of bonds (or angles) for which Mogul statistics could be retrieved, the number of bonds (or angles) that are observed in the model and the number of bonds (or angles) that are defined in the Chemical Component Dictionary. The Link column lists molecule types, if any, to which the group is linked. The Z score for a bond

length (or angle) is the number of standard deviations the observed value is removed from the expected value. A bond length (or angle) with  $|Z| > 2$  is considered an outlier worth inspection. RMSZ is the root-mean-square of all Z scores of the bond lengths (or angles).

Mol	Type	Chain	Res	Link	Bond lengths			Bond angles		
					Counts	RMSZ	$\# Z  > 2$	Counts	RMSZ	$\# Z  > 2$
2	MPD	A	202	-	7,7,7	0.34	0	9,10,10	0.75	0
2	MPD	B	203	-	7,7,7	0.28	0	9,10,10	0.49	0
2	MPD	B	201	-	7,7,7	0.59	0	9,10,10	0.53	0
2	MPD	F	201	-	7,7,7	0.22	0	9,10,10	0.41	0
2	MPD	A	201	-	7,7,7	0.35	0	9,10,10	0.43	0
2	MPD	C	201	-	7,7,7	0.36	0	9,10,10	0.55	0
2	MPD	B	202	-	7,7,7	0.18	0	9,10,10	0.40	0

In the following table, the Chirals column lists the number of chiral outliers, the number of chiral centers analysed, the number of these observed in the model and the number defined in the Chemical Component Dictionary. Similar counts are reported in the Torsion and Rings columns. '-' means no outliers of that kind were identified.

Mol	Type	Chain	Res	Link	Chirals	Torsions	Rings
2	MPD	A	202	-	-	2/5/5/5	-
2	MPD	B	203	-	-	1/5/5/5	-
2	MPD	B	201	-	-	1/5/5/5	-
2	MPD	F	201	-	-	0/5/5/5	-
2	MPD	A	201	-	-	1/5/5/5	-
2	MPD	C	201	-	-	0/5/5/5	-
2	MPD	B	202	-	-	1/5/5/5	-

There are no bond length outliers.

There are no bond angle outliers.

There are no chirality outliers.

All (6) torsion outliers are listed below:

Mol	Chain	Res	Type	Atoms
2	B	203	MPD	O2-C2-C3-C4
2	A	201	MPD	O2-C2-C3-C4
2	A	202	MPD	O2-C2-C3-C4
2	B	201	MPD	O2-C2-C3-C4
2	B	202	MPD	O2-C2-C3-C4
2	A	202	MPD	C1-C2-C3-C4

There are no ring outliers.

5 monomers are involved in 10 short contacts:

Mol	Chain	Res	Type	Clashes	Symm-Clashes
2	A	202	MPD	1	0
2	B	203	MPD	3	0
2	F	201	MPD	1	0
2	A	201	MPD	4	0
2	B	202	MPD	1	0

## 5.7 Other polymers [i](#)

There are no such residues in this entry.

## 5.8 Polymer linkage issues [i](#)

There are no chain breaks in this entry.

## 6 Fit of model and data

### 6.1 Protein, DNA and RNA chains

In the following table, the column labelled ‘#RSRZ> 2’ contains the number (and percentage) of RSRZ outliers, followed by percent RSRZ outliers for the chain as percentile scores relative to all X-ray entries and entries of similar resolution. The OWAB column contains the minimum, median, 95<sup>th</sup> percentile and maximum values of the occupancy-weighted average B-factor per residue. The column labelled ‘Q< 0.9’ lists the number of (and percentage) of residues with an average occupancy less than 0.9.

Mol	Chain	Analysed	<RSRZ>	#RSRZ>2	OWAB(Å <sup>2</sup> )	Q<0.9
1	A	123/131 (93%)	0.05	3 (2%) 59 64	19, 35, 58, 68	2 (1%)
1	B	123/131 (93%)	0.24	4 (3%) 49 53	18, 38, 70, 95	2 (1%)
1	C	123/131 (93%)	0.25	1 (0%) 82 85	21, 39, 58, 69	1 (0%)
1	D	130/131 (99%)	0.32	5 (3%) 44 48	28, 40, 59, 74	0
1	E	122/131 (93%)	0.44	6 (4%) 35 38	28, 43, 63, 71	1 (0%)
1	F	127/131 (96%)	0.48	4 (3%) 51 55	15, 43, 65, 76	3 (2%)
All	All	748/786 (95%)	0.30	23 (3%) 51 55	15, 40, 64, 95	9 (1%)

All (23) RSRZ outliers are listed below:

Mol	Chain	Res	Type	RSRZ
1	F	64	TRP	3.7
1	B	19	HIS	3.4
1	B	2	GLY	3.0
1	A	64	TRP	2.9
1	E	62	GLN	2.8
1	D	-5	ALA	2.8
1	E	64	TRP	2.8
1	D	37	ILE	2.8
1	D	64	TRP	2.7
1	F	-5	ALA	2.7
1	B	17	TYR	2.6
1	F	18	PHE	2.6
1	C	2	GLY	2.5
1	B	18	PHE	2.4
1	A	19	HIS	2.3
1	E	86	ASP	2.3
1	F	13	VAL	2.1
1	E	19	HIS	2.1
1	D	86	ASP	2.1

*Continued on next page...*



*Continued from previous page...*

Mol	Chain	Res	Type	RSRZ
1	E	63	GLU	2.1
1	A	2	GLY	2.0
1	D	109	SER	2.0
1	E	123	PHE	2.0

## 6.2 Non-standard residues in protein, DNA, RNA chains [i](#)

There are no non-standard protein/DNA/RNA residues in this entry.

## 6.3 Carbohydrates [i](#)

There are no oligosaccharides in this entry.

## 6.4 Ligands [i](#)

In the following table, the Atoms column lists the number of modelled atoms in the group and the number defined in the chemical component dictionary. The B-factors column lists the minimum, median, 95<sup>th</sup> percentile and maximum values of B factors of atoms in the group. The column labelled 'Q< 0.9' lists the number of atoms with occupancy less than 0.9.

Mol	Type	Chain	Res	Atoms	RSCC	RSR	B-factors( $\text{\AA}^2$ )	Q<0.9
2	MPD	A	202	8/8	0.82	0.20	26,36,41,42	8
2	MPD	B	201	8/8	0.87	0.13	43,48,52,52	0
2	MPD	B	202	8/8	0.90	0.11	37,43,44,54	0
2	MPD	C	201	8/8	0.90	0.11	34,44,46,51	0
2	MPD	B	203	8/8	0.91	0.10	34,39,44,47	0
2	MPD	F	201	8/8	0.91	0.10	41,45,47,56	0
2	MPD	A	201	8/8	0.95	0.08	30,34,41,51	0

## 6.5 Other polymers [i](#)

There are no such residues in this entry.