



wwPDB EM Validation Summary Report ⓘ

Mar 5, 2026 – 08:32 PM UTC

PDB ID : 9G2H / pdb_00009g2h
EMDB ID : EMD-50976
Title : Mouse Teneurin2 dimer variant A1B0
Authors : Berbeira-Santana, M.; Zhou, J.C.; el Omari, K.; Baker, L.; Seiradake, E.
Deposited on : 2024-07-10
Resolution : 2.55 Å (reported)
Based on initial model : .

This is a wwPDB EM Validation Summary Report for a publicly released PDB entry.

We welcome your comments at validation@mail.wwpdb.org

A user guide is available at

<https://www.wwpdb.org/validation/2017/EMValidationReportHelp>
with specific help available everywhere you see the ⓘ symbol.

The types of validation reports are described at

<http://www.wwpdb.org/validation/2017/FAQs#types>.

The following versions of software and data (see [references ⓘ](#)) were used in the production of this report:

EMDB validation analysis : 0.0.1.dev132
Mogul : 2022.3.0, CSD as543be (2022)
MolProbity : 4-5-2 with Phenix2.0
Percentile statistics : 20250101.v01 (using entries in the PDB archive January 1st 2025)
EM percentile statistics : 202505.v01 (Using data in the EMDb archive up until May 2025)
MapQ : 1.9.13
Ideal geometry (proteins) : Engh & Huber (2001)
Ideal geometry (DNA, RNA) : Parkinson et al. (1996)
Validation Pipeline (wwPDB-VP) : 2.49

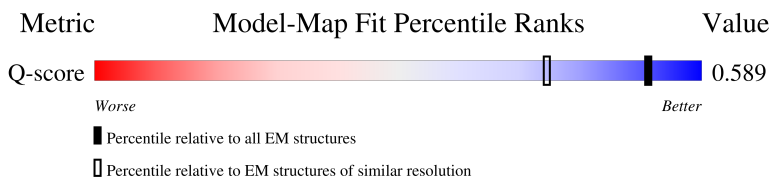
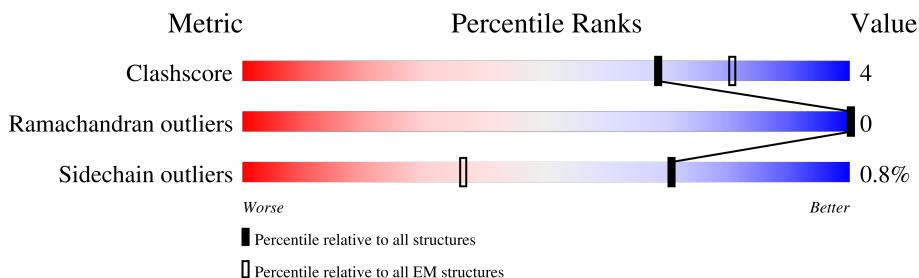
1 Overall quality at a glance

The following experimental techniques were used to determine the structure:

ELECTRON MICROSCOPY

The reported resolution of this entry is 2.55 Å.

Percentile scores (ranging between 0-100) for global validation metrics of the entry are shown in the following graphic. The table shows the number of entries on which the scores are based.



Metric	Whole archive (#Entries)	EM structures (#Entries)	Similar EM resolution (#Entries, resolution range(Å))
Clashscore	229148	23984	-
Ramachandran outliers	224038	23583	-
Sidechain outliers	223484	23102	-
Q-score	-	25397	7475 (2.05 - 3.05)

The table below summarises the geometric issues observed across the polymeric chains and their fit to the map. The red, orange, yellow and green segments of the bar indicate the fraction of residues that contain outliers for ≥ 3 , 2, 1 and 0 types of geometric quality criteria respectively. A grey segment represents the fraction of residues that are not modelled. The numeric value for each fraction is indicated below the corresponding segment, with a dot representing fractions $\leq 5\%$. The upper red bar (where present) indicates the fraction of residues that have poor fit to the EM map (all-atom inclusion $< 40\%$). The numeric value is given above the bar.

Mol	Chain	Length	Quality of chain
1	A	2403	
1	B	2403	
2	C	2	
2	E	2	

Continued on next page...

Continued from previous page...

Mol	Chain	Length	Quality of chain
2	F	2	<div><div></div><div>100%</div></div>
2	H	2	<div><div></div><div>50%</div><div></div><div>50%</div></div>
3	D	3	<div><div></div><div>33%</div><div></div><div>67%</div></div>
4	G	4	<div><div></div><div>25%</div><div></div><div>50%</div><div></div><div>50%</div></div>

2 Entry composition

There are 5 unique types of molecules in this entry. The entry contains 22239 atoms, of which 0 are hydrogens and 0 are deuteriums.

In the tables below, the AltConf column contains the number of residues with at least one atom in alternate conformation and the Trace column contains the number of residues modelled with at most 2 atoms.

- Molecule 1 is a protein called Teneurin transmembrane protein 2.

Mol	Chain	Residues	Atoms					AltConf	Trace
1	A	1366	Total	C	N	O	S	0	0
			10956	6944	1887	2089	36		
1	B	1366	Total	C	N	O	S	0	0
			10956	6944	1887	2089	36		

There are 100 discrepancies between the modelled and reference sequences:

Chain	Residue	Modelled	Actual	Comment	Reference
A	367	GLU	-	expression tag	UNP A0A0A0MQB7
A	368	THR	-	expression tag	UNP A0A0A0MQB7
A	369	GLY	-	expression tag	UNP A0A0A0MQB7
A	370	HIS	-	expression tag	UNP A0A0A0MQB7
A	371	HIS	-	expression tag	UNP A0A0A0MQB7
A	372	HIS	-	expression tag	UNP A0A0A0MQB7
A	373	HIS	-	expression tag	UNP A0A0A0MQB7
A	374	HIS	-	expression tag	UNP A0A0A0MQB7
A	375	HIS	-	expression tag	UNP A0A0A0MQB7
A	376	ARG	-	expression tag	UNP A0A0A0MQB7
A	377	GLY	-	expression tag	UNP A0A0A0MQB7
A	378	GLY	-	expression tag	UNP A0A0A0MQB7
A	379	LEU	-	expression tag	UNP A0A0A0MQB7
A	380	ASN	-	expression tag	UNP A0A0A0MQB7
A	381	ASP	-	expression tag	UNP A0A0A0MQB7
A	382	ILE	-	expression tag	UNP A0A0A0MQB7
A	383	PHE	-	expression tag	UNP A0A0A0MQB7
A	384	GLU	-	expression tag	UNP A0A0A0MQB7
A	385	ALA	-	expression tag	UNP A0A0A0MQB7
A	386	GLN	-	expression tag	UNP A0A0A0MQB7
A	387	LYS	-	expression tag	UNP A0A0A0MQB7
A	388	ILE	-	expression tag	UNP A0A0A0MQB7
A	389	GLU	-	expression tag	UNP A0A0A0MQB7
A	390	TRP	-	expression tag	UNP A0A0A0MQB7
A	391	HIS	-	expression tag	UNP A0A0A0MQB7
A	392	GLU	-	expression tag	UNP A0A0A0MQB7

Continued on next page...

Continued from previous page...

Chain	Residue	Modelled	Actual	Comment	Reference
A	393	GLY	-	expression tag	UNP A0A0A0MQB7
A	394	GLY	-	expression tag	UNP A0A0A0MQB7
A	395	SER	-	expression tag	UNP A0A0A0MQB7
A	396	THR	-	expression tag	UNP A0A0A0MQB7
A	397	GLY	-	expression tag	UNP A0A0A0MQB7
A	737	GLU	-	insertion	UNP A0A0A0MQB7
A	799	GLY	-	insertion	UNP A0A0A0MQB7
A	800	ARG	-	insertion	UNP A0A0A0MQB7
A	801	GLN	-	insertion	UNP A0A0A0MQB7
A	802	THR	-	insertion	UNP A0A0A0MQB7
A	803	ALA	-	insertion	UNP A0A0A0MQB7
A	804	GLY	-	insertion	UNP A0A0A0MQB7
A	805	THR	-	insertion	UNP A0A0A0MQB7
A	806	GLU	-	insertion	UNP A0A0A0MQB7
A	807	THR	-	insertion	UNP A0A0A0MQB7
A	?	-	ARG	deletion	UNP A0A0A0MQB7
A	?	-	ASN	deletion	UNP A0A0A0MQB7
A	?	-	LYS	deletion	UNP A0A0A0MQB7
A	?	-	GLU	deletion	UNP A0A0A0MQB7
A	?	-	PHE	deletion	UNP A0A0A0MQB7
A	?	-	LYS	deletion	UNP A0A0A0MQB7
A	?	-	HIS	deletion	UNP A0A0A0MQB7
A	2768	GLY	-	expression tag	UNP A0A0A0MQB7
A	2769	THR	-	expression tag	UNP A0A0A0MQB7
B	367	GLU	-	expression tag	UNP A0A0A0MQB7
B	368	THR	-	expression tag	UNP A0A0A0MQB7
B	369	GLY	-	expression tag	UNP A0A0A0MQB7
B	370	HIS	-	expression tag	UNP A0A0A0MQB7
B	371	HIS	-	expression tag	UNP A0A0A0MQB7
B	372	HIS	-	expression tag	UNP A0A0A0MQB7
B	373	HIS	-	expression tag	UNP A0A0A0MQB7
B	374	HIS	-	expression tag	UNP A0A0A0MQB7
B	375	HIS	-	expression tag	UNP A0A0A0MQB7
B	376	ARG	-	expression tag	UNP A0A0A0MQB7
B	377	GLY	-	expression tag	UNP A0A0A0MQB7
B	378	GLY	-	expression tag	UNP A0A0A0MQB7
B	379	LEU	-	expression tag	UNP A0A0A0MQB7
B	380	ASN	-	expression tag	UNP A0A0A0MQB7
B	381	ASP	-	expression tag	UNP A0A0A0MQB7
B	382	ILE	-	expression tag	UNP A0A0A0MQB7
B	383	PHE	-	expression tag	UNP A0A0A0MQB7
B	384	GLU	-	expression tag	UNP A0A0A0MQB7

Continued on next page...

Continued from previous page...

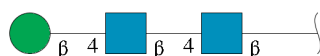
Chain	Residue	Modelled	Actual	Comment	Reference
B	385	ALA	-	expression tag	UNP A0A0A0MQB7
B	386	GLN	-	expression tag	UNP A0A0A0MQB7
B	387	LYS	-	expression tag	UNP A0A0A0MQB7
B	388	ILE	-	expression tag	UNP A0A0A0MQB7
B	389	GLU	-	expression tag	UNP A0A0A0MQB7
B	390	TRP	-	expression tag	UNP A0A0A0MQB7
B	391	HIS	-	expression tag	UNP A0A0A0MQB7
B	392	GLU	-	expression tag	UNP A0A0A0MQB7
B	393	GLY	-	expression tag	UNP A0A0A0MQB7
B	394	GLY	-	expression tag	UNP A0A0A0MQB7
B	395	SER	-	expression tag	UNP A0A0A0MQB7
B	396	THR	-	expression tag	UNP A0A0A0MQB7
B	397	GLY	-	expression tag	UNP A0A0A0MQB7
B	737	GLU	-	insertion	UNP A0A0A0MQB7
B	799	GLY	-	insertion	UNP A0A0A0MQB7
B	800	ARG	-	insertion	UNP A0A0A0MQB7
B	801	GLN	-	insertion	UNP A0A0A0MQB7
B	802	THR	-	insertion	UNP A0A0A0MQB7
B	803	ALA	-	insertion	UNP A0A0A0MQB7
B	804	GLY	-	insertion	UNP A0A0A0MQB7
B	805	THR	-	insertion	UNP A0A0A0MQB7
B	806	GLU	-	insertion	UNP A0A0A0MQB7
B	807	THR	-	insertion	UNP A0A0A0MQB7
B	?	-	ARG	deletion	UNP A0A0A0MQB7
B	?	-	ASN	deletion	UNP A0A0A0MQB7
B	?	-	LYS	deletion	UNP A0A0A0MQB7
B	?	-	GLU	deletion	UNP A0A0A0MQB7
B	?	-	PHE	deletion	UNP A0A0A0MQB7
B	?	-	LYS	deletion	UNP A0A0A0MQB7
B	?	-	HIS	deletion	UNP A0A0A0MQB7
B	2768	GLY	-	expression tag	UNP A0A0A0MQB7
B	2769	THR	-	expression tag	UNP A0A0A0MQB7

- Molecule 2 is an oligosaccharide called 2-acetamido-2-deoxy-beta-D-glucopyranose-(1-4)-2-acetamido-2-deoxy-beta-D-glucopyranose.



Mol	Chain	Residues	Atoms				AltConf	Trace
2	C	2	Total	C	N	O	0	0
			28	16	2	10		
2	E	2	Total	C	N	O	0	0
			28	16	2	10		
2	F	2	Total	C	N	O	0	0
			28	16	2	10		
2	H	2	Total	C	N	O	0	0
			28	16	2	10		

- Molecule 3 is an oligosaccharide called beta-D-mannopyranose-(1-4)-2-acetamido-2-deoxy-beta-D-glucopyranose-(1-4)-2-acetamido-2-deoxy-beta-D-glucopyranose.



Mol	Chain	Residues	Atoms				AltConf	Trace
3	D	3	Total	C	N	O	0	0
			39	22	2	15		

- Molecule 4 is an oligosaccharide called alpha-D-mannopyranose-(1-3)-beta-D-mannopyranose-(1-4)-2-acetamido-2-deoxy-beta-D-glucopyranose-(1-4)-2-acetamido-2-deoxy-beta-D-glucopyranose.



Mol	Chain	Residues	Atoms				AltConf	Trace
4	G	4	Total	C	N	O	0	0
			50	28	2	20		

- Molecule 5 is 2-acetamido-2-deoxy-beta-D-glucopyranose (CCD ID: NAG) (formula: C₈H₁₅NO₆).

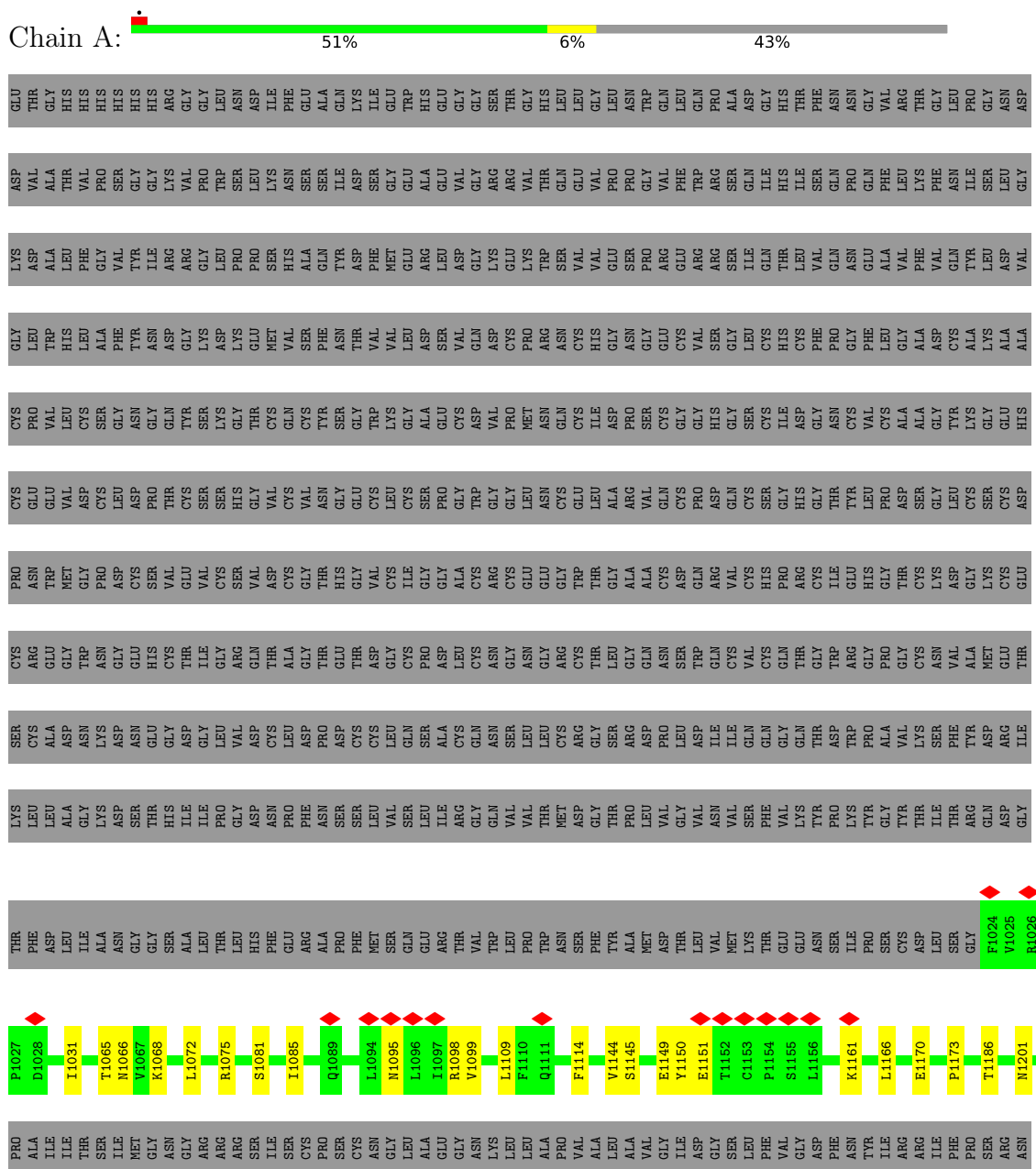


Mol	Chain	Residues	Atoms				AltConf
5	A	1	Total	C	N	O	0
			14	8	1	5	
5	A	1	Total	C	N	O	0
			14	8	1	5	
5	A	1	Total	C	N	O	0
			14	8	1	5	
5	A	1	Total	C	N	O	0
			14	8	1	5	
5	A	1	Total	C	N	O	0
			14	8	1	5	
5	B	1	Total	C	N	O	0
			14	8	1	5	
5	B	1	Total	C	N	O	0
			14	8	1	5	
5	B	1	Total	C	N	O	0
			14	8	1	5	

3 Residue-property plots

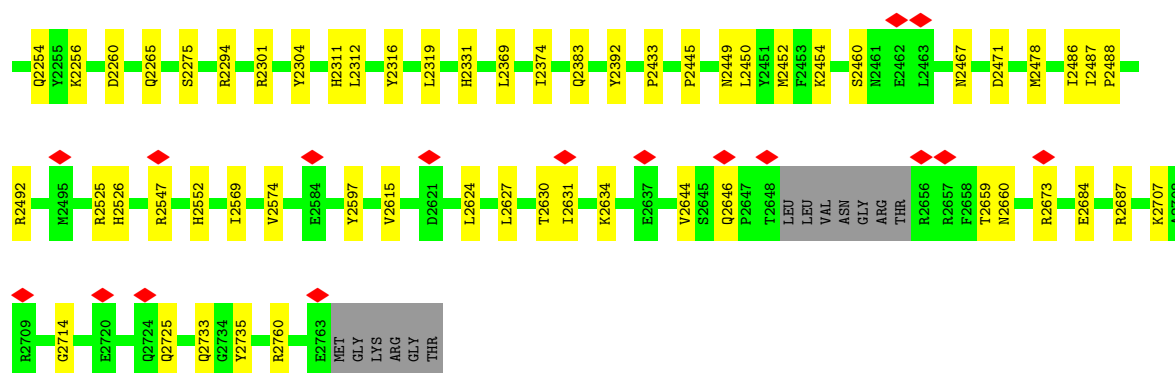
These plots are drawn for all protein, RNA, DNA and oligosaccharide chains in the entry. The first graphic for a chain summarises the proportions of the various outlier classes displayed in the second graphic. The second graphic shows the sequence view annotated by issues in geometry and atom inclusion in map density. Residues are color-coded according to the number of geometric quality criteria for which they contain at least one outlier: green = 0, yellow = 1, orange = 2 and red = 3 or more. A red diamond above a residue indicates a poor fit to the EM map for this residue (all-atom inclusion < 40%). Stretches of 2 or more consecutive residues without any outlier are shown as a green connector. Residues present in the sample, but not in the model, are shown in grey.

• Molecule 1: Teneurin transmembrane protein 2









- Molecule 2: 2-acetamido-2-deoxy-beta-D-glucopyranose-(1-4)-2-acetamido-2-deoxy-beta-D-glucopyranose

Chain C: 50% 50%



- Molecule 2: 2-acetamido-2-deoxy-beta-D-glucopyranose-(1-4)-2-acetamido-2-deoxy-beta-D-glucopyranose

Chain E: 50% 50%



- Molecule 2: 2-acetamido-2-deoxy-beta-D-glucopyranose-(1-4)-2-acetamido-2-deoxy-beta-D-glucopyranose

Chain F: 100%



- Molecule 2: 2-acetamido-2-deoxy-beta-D-glucopyranose-(1-4)-2-acetamido-2-deoxy-beta-D-glucopyranose

Chain H: 50% 50%



- Molecule 3: beta-D-mannopyranose-(1-4)-2-acetamido-2-deoxy-beta-D-glucopyranose-(1-4)-2-acetamido-2-deoxy-beta-D-glucopyranose

Chain D: 33% 67%



- Molecule 4: alpha-D-mannopyranose-(1-3)-beta-D-mannopyranose-(1-4)-2-acetamido-2-deoxy-beta-D-glucopyranose-(1-4)-2-acetamido-2-deoxy-beta-D-glucopyranose



4 Experimental information

Property	Value	Source
EM reconstruction method	SINGLE PARTICLE	Depositor
Imposed symmetry	POINT, C2	Depositor
Number of particles used	167798	Depositor
Resolution determination method	FSC 0.143 CUT-OFF	Depositor
CTF correction method	PHASE FLIPPING AND AMPLITUDE CORRECTION	Depositor
Microscope	FEI TITAN KRIOS	Depositor
Voltage (kV)	300	Depositor
Electron dose ($e^-/\text{\AA}^2$)	42.303	Depositor
Minimum defocus (nm)	1000	Depositor
Maximum defocus (nm)	2000	Depositor
Magnification	105000	Depositor
Image detector	GATAN K3 (6k x 4k)	Depositor
Maximum map value	1.790	Depositor
Minimum map value	-0.055	Depositor
Average map value	0.002	Depositor
Map value standard deviation	0.030	Depositor
Recommended contour level	0.134	Depositor
Map size (Å)	290.5, 290.5, 290.5	wwPDB
Map dimensions	350, 350, 350	wwPDB
Map angles (°)	90.0, 90.0, 90.0	wwPDB
Pixel spacing (Å)	0.83, 0.83, 0.83	Depositor

5 Model quality [i](#)

5.1 Standard geometry [i](#)

Bond lengths and bond angles in the following residue types are not validated in this section: NAG, MAN, BMA

The Z score for a bond length (or angle) is the number of standard deviations the observed value is removed from the expected value. A bond length (or angle) with $|Z| > 5$ is considered an outlier worth inspection. RMSZ is the root-mean-square of all Z scores of the bond lengths (or angles).

Mol	Chain	Bond lengths		Bond angles	
		RMSZ	$\# Z > 5$	RMSZ	$\# Z > 5$
1	A	0.15	0/11207	0.35	0/15189
1	B	0.15	0/11207	0.34	0/15189
All	All	0.15	0/22414	0.34	0/30378

Chiral center outliers are detected by calculating the chiral volume of a chiral center and verifying if the center is modelled as a planar moiety or with the opposite hand. A planarity outlier is detected by checking planarity of atoms in a peptide group, atoms in a mainchain group or atoms of a sidechain that are expected to be planar.

Mol	Chain	#Chirality outliers	#Planarity outliers
1	B	0	1

There are no bond length outliers.

There are no bond angle outliers.

There are no chirality outliers.

All (1) planarity outliers are listed below:

Mol	Chain	Res	Type	Group
1	B	2492	ARG	Sidechain

5.2 Too-close contacts [i](#)

In the following table, the Non-H and H(model) columns list the number of non-hydrogen atoms and hydrogen atoms in the chain respectively. The H(added) column lists the number of hydrogen atoms added and optimized by MolProbity. The Clashes column lists the number of clashes within the asymmetric unit, whereas Symm-Clashes lists symmetry-related clashes.

Mol	Chain	Non-H	H(model)	H(added)	Clashes	Symm-Clashes
1	A	10956	0	10697	81	0
1	B	10956	0	10698	86	0
2	C	28	0	25	0	0
2	E	28	0	25	0	0
2	F	28	0	25	0	0
2	H	28	0	25	1	0
3	D	39	0	34	1	0
4	G	50	0	43	0	0
5	A	70	0	65	0	0
5	B	56	0	52	0	0
All	All	22239	0	21689	164	0

The all-atom clashscore is defined as the number of clashes found per 1000 atoms (including hydrogen atoms). The all-atom clashscore for this structure is 4.

The worst 5 of 164 close contacts within the same asymmetric unit are listed below, sorted by their clash magnitude.

Atom-1	Atom-2	Interatomic distance (Å)	Clash overlap (Å)
1:A:1081:SER:HB3	1:A:1166:LEU:HD22	1.79	0.65
1:B:1098:ARG:HB2	1:B:1149:GLU:HB3	1.81	0.62
1:A:2067:LYS:HE3	1:A:2069:ILE:HD11	1.83	0.61
1:B:2228:LEU:HD22	1:B:2239:LEU:HD11	1.81	0.61
1:B:1775:ASN:HA	1:B:2039:THR:HG23	1.83	0.60

There are no symmetry-related clashes.

5.3 Torsion angles [i](#)

5.3.1 Protein backbone [i](#)

In the following table, the Percentiles column shows the percent Ramachandran outliers of the chain as a percentile score with respect to all PDB entries followed by that with respect to all EM entries.

The Analysed column shows the number of residues for which the backbone conformation was analysed, and the total number of residues.

Mol	Chain	Analysed	Favoured	Allowed	Outliers	Percentiles	
1	A	1358/2403 (56%)	1322 (97%)	36 (3%)	0	100	100
1	B	1358/2403 (56%)	1323 (97%)	35 (3%)	0	100	100
All	All	2716/4806 (56%)	2645 (97%)	71 (3%)	0	100	100

There are no Ramachandran outliers to report.

5.3.2 Protein sidechains [i](#)

In the following table, the Percentiles column shows the percent sidechain outliers of the chain as a percentile score with respect to all PDB entries followed by that with respect to all EM entries.

The Analysed column shows the number of residues for which the sidechain conformation was analysed, and the total number of residues.

Mol	Chain	Analysed	Rotameric	Outliers	Percentiles	
1	A	1200/2062 (58%)	1191 (99%)	9 (1%)	73	84
1	B	1200/2062 (58%)	1190 (99%)	10 (1%)	73	84
All	All	2400/4124 (58%)	2381 (99%)	19 (1%)	70	84

5 of 19 residues with a non-rotameric sidechain are listed below:

Mol	Chain	Res	Type
1	B	2121	HIS
1	B	2552	HIS
1	B	2660	ASN
1	B	2526	HIS
1	A	2660	ASN

Sometimes sidechains can be flipped to improve hydrogen bonding and reduce clashes. 5 of 22 such sidechains are listed below:

Mol	Chain	Res	Type
1	B	2320	HIS
1	B	2383	GLN
1	B	2346	HIS
1	B	2417	HIS
1	A	2346	HIS

5.3.3 RNA [i](#)

There are no RNA molecules in this entry.

5.4 Non-standard residues in protein, DNA, RNA chains [i](#)

There are no non-standard protein/DNA/RNA residues in this entry.

5.5 Carbohydrates ⓘ

15 monosaccharides are modelled in this entry.

In the following table, the Counts columns list the number of bonds (or angles) for which Mogul statistics could be retrieved, the number of bonds (or angles) that are observed in the model and the number of bonds (or angles) that are defined in the Chemical Component Dictionary. The Link column lists molecule types, if any, to which the group is linked. The Z score for a bond length (or angle) is the number of standard deviations the observed value is removed from the expected value. A bond length (or angle) with $|Z| > 2$ is considered an outlier worth inspection. RMSZ is the root-mean-square of all Z scores of the bond lengths (or angles).

Mol	Type	Chain	Res	Link	Bond lengths			Bond angles		
					Counts	RMSZ	# Z > 2	Counts	RMSZ	# Z > 2
2	NAG	C	1	1,2	14,14,15	0.30	0	17,19,21	0.57	0
2	NAG	C	2	2	14,14,15	0.38	0	17,19,21	0.91	1 (5%)
3	NAG	D	1	1,3	14,14,15	0.21	0	17,19,21	0.67	0
3	NAG	D	2	3	14,14,15	0.40	0	17,19,21	0.53	0
3	BMA	D	3	3	11,11,12	0.59	0	15,15,17	0.78	1 (6%)
2	NAG	E	1	1,2	14,14,15	0.18	0	17,19,21	0.88	1 (5%)
2	NAG	E	2	2	14,14,15	0.45	0	17,19,21	0.52	0
2	NAG	F	1	1,2	14,14,15	0.30	0	17,19,21	0.55	0
2	NAG	F	2	2	14,14,15	0.30	0	17,19,21	0.55	0
4	NAG	G	1	1,4	14,14,15	0.16	0	17,19,21	0.72	0
4	NAG	G	2	4	14,14,15	0.47	0	17,19,21	0.59	0
4	BMA	G	3	4	11,11,12	0.59	0	15,15,17	0.80	1 (6%)
4	MAN	G	4	4	11,11,12	0.72	0	15,15,17	0.93	2 (13%)
2	NAG	H	1	1,2	14,14,15	0.17	0	17,19,21	0.78	1 (5%)
2	NAG	H	2	2	14,14,15	0.63	0	17,19,21	0.92	1 (5%)

In the following table, the Chirals column lists the number of chiral outliers, the number of chiral centers analysed, the number of these observed in the model and the number defined in the Chemical Component Dictionary. Similar counts are reported in the Torsion and Rings columns. '-' means no outliers of that kind were identified.

Mol	Type	Chain	Res	Link	Chirals	Torsions	Rings
2	NAG	C	1	1,2	-	0/6/23/26	0/1/1/1
2	NAG	C	2	2	-	2/6/23/26	0/1/1/1
3	NAG	D	1	1,3	-	4/6/23/26	0/1/1/1
3	NAG	D	2	3	-	0/6/23/26	0/1/1/1
3	BMA	D	3	3	-	0/2/19/22	0/1/1/1
2	NAG	E	1	1,2	-	4/6/23/26	0/1/1/1
2	NAG	E	2	2	-	4/6/23/26	0/1/1/1

Continued on next page...

Continued from previous page...

Mol	Type	Chain	Res	Link	Chirals	Torsions	Rings
2	NAG	F	1	1,2	-	0/6/23/26	0/1/1/1
2	NAG	F	2	2	-	3/6/23/26	0/1/1/1
4	NAG	G	1	1,4	-	4/6/23/26	0/1/1/1
4	NAG	G	2	4	-	2/6/23/26	0/1/1/1
4	BMA	G	3	4	-	0/2/19/22	0/1/1/1
4	MAN	G	4	4	-	0/2/19/22	0/1/1/1
2	NAG	H	1	1,2	-	4/6/23/26	0/1/1/1
2	NAG	H	2	2	-	2/6/23/26	0/1/1/1

There are no bond length outliers.

The worst 5 of 8 bond angle outliers are listed below:

Mol	Chain	Res	Type	Atoms	Z	Observed(°)	Ideal(°)
2	E	1	NAG	C1-O5-C5	3.19	116.47	112.19
2	H	2	NAG	C2-N2-C7	2.62	126.41	122.90
2	C	2	NAG	C2-N2-C7	2.59	126.37	122.90
2	H	1	NAG	C1-O5-C5	2.57	115.64	112.19
4	G	4	MAN	C1-O5-C5	2.38	115.37	112.19

There are no chirality outliers.

5 of 29 torsion outliers are listed below:

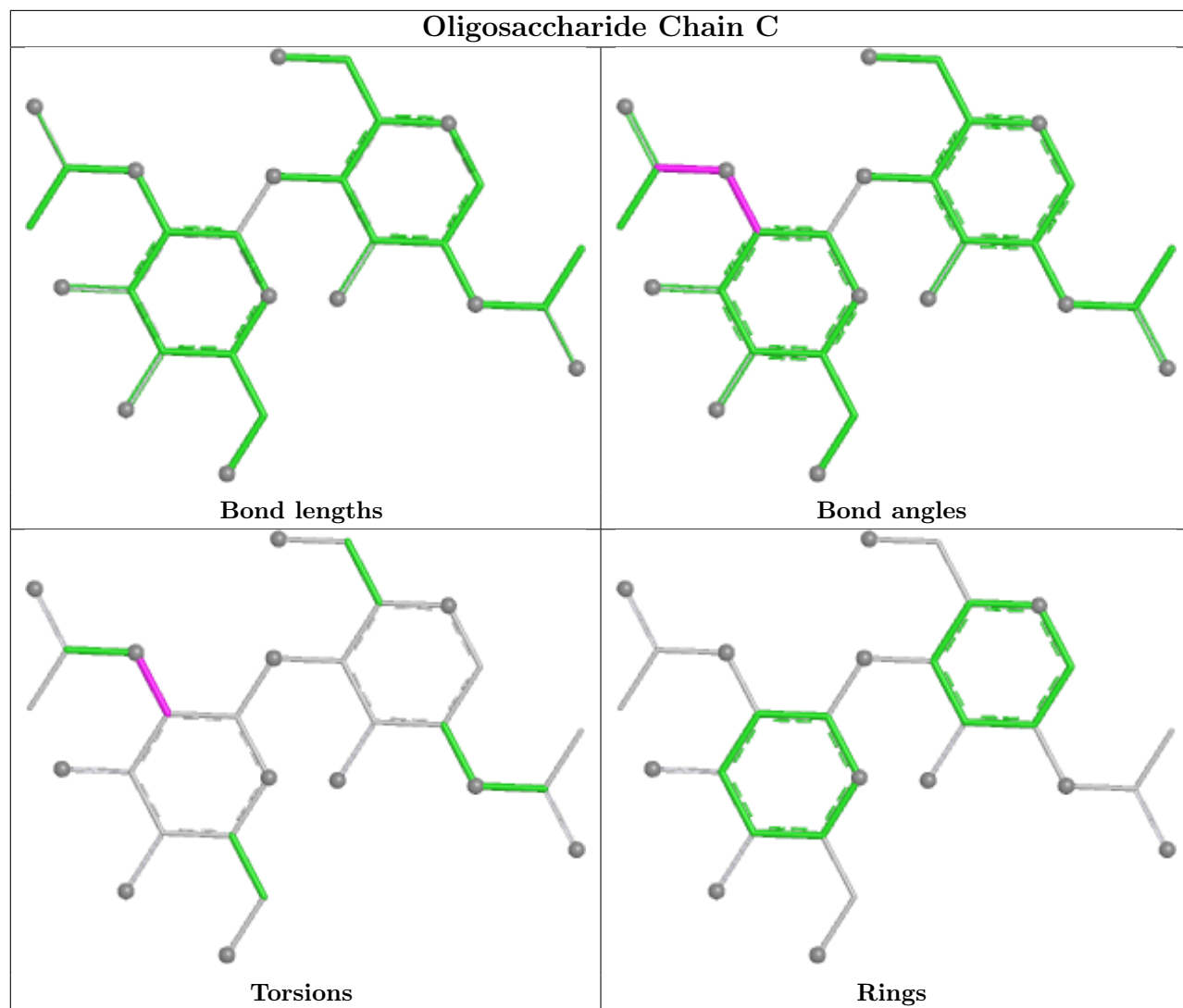
Mol	Chain	Res	Type	Atoms
3	D	1	NAG	O5-C5-C6-O6
4	G	1	NAG	C4-C5-C6-O6
2	E	2	NAG	O5-C5-C6-O6
3	D	1	NAG	C4-C5-C6-O6
4	G	1	NAG	O5-C5-C6-O6

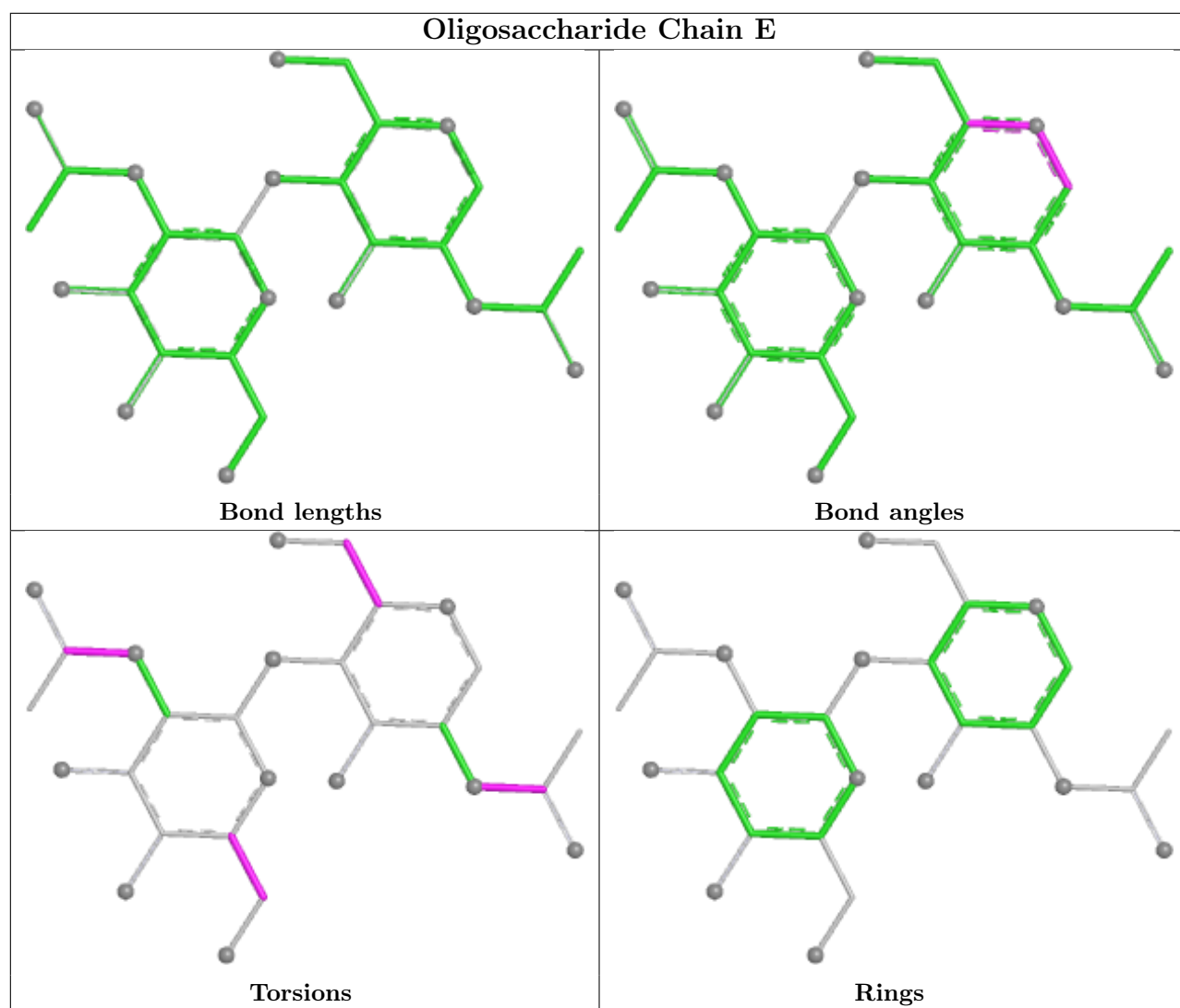
There are no ring outliers.

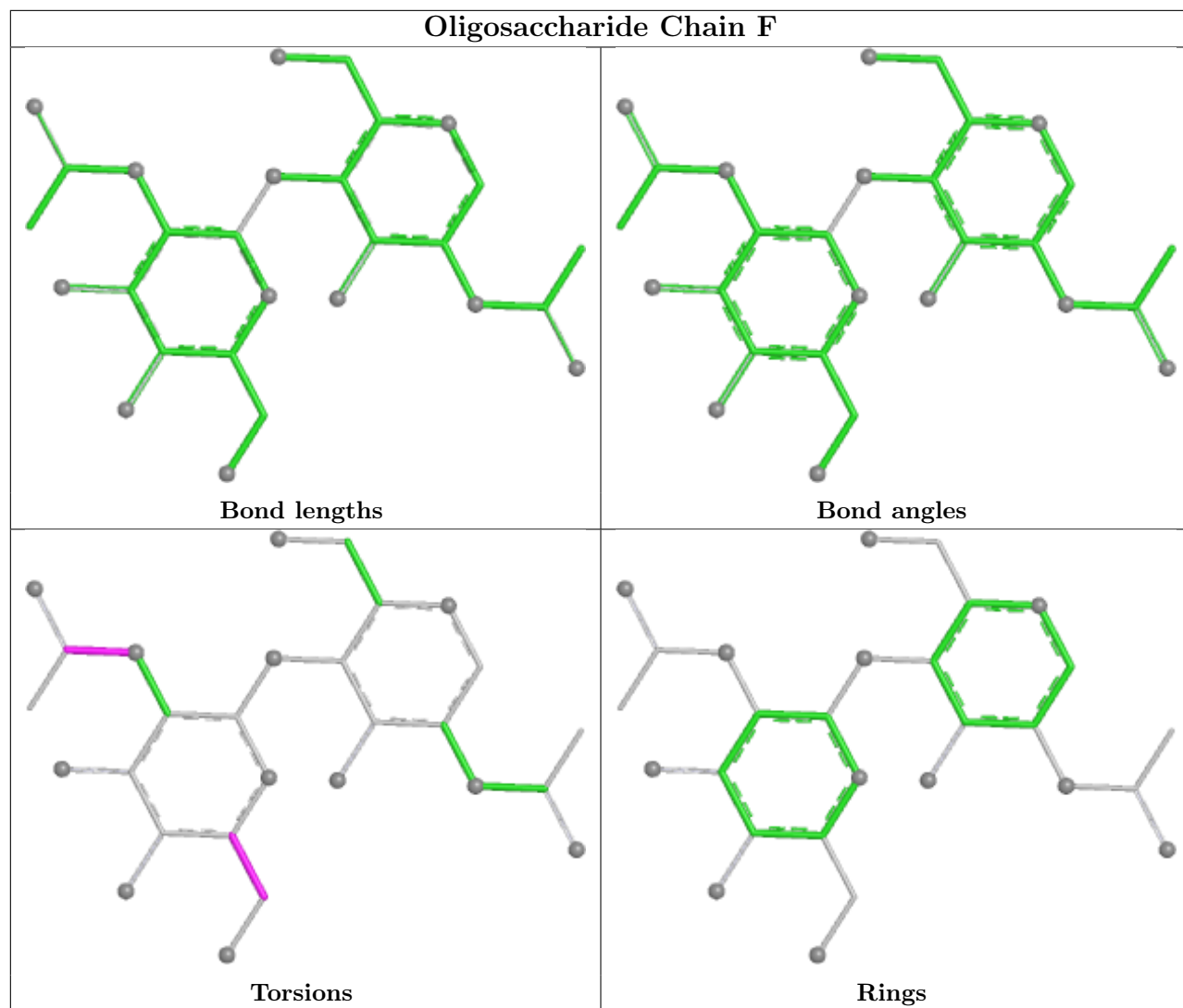
2 monomers are involved in 2 short contacts:

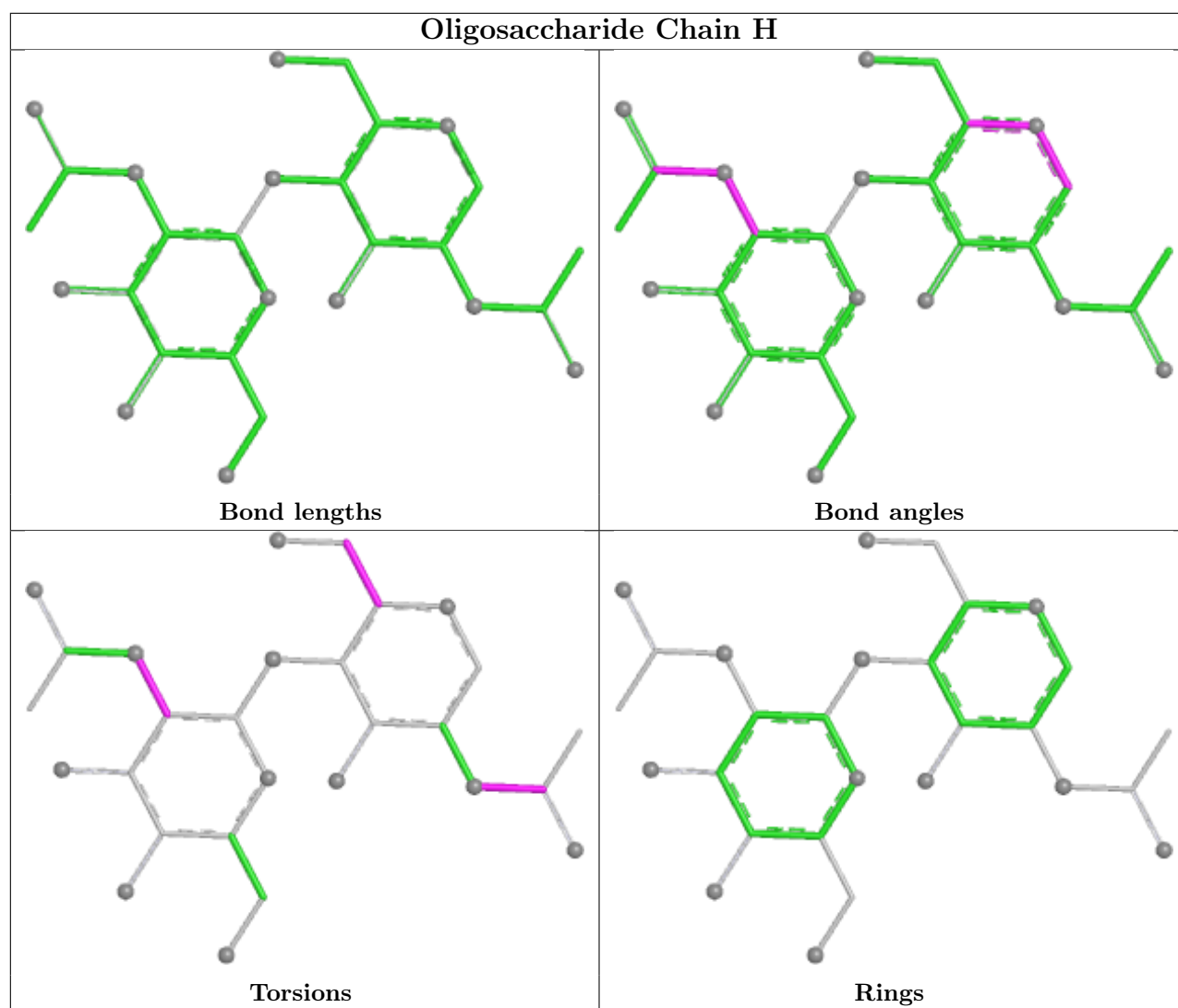
Mol	Chain	Res	Type	Clashes	Symm-Clashes
2	H	1	NAG	1	0
3	D	1	NAG	1	0

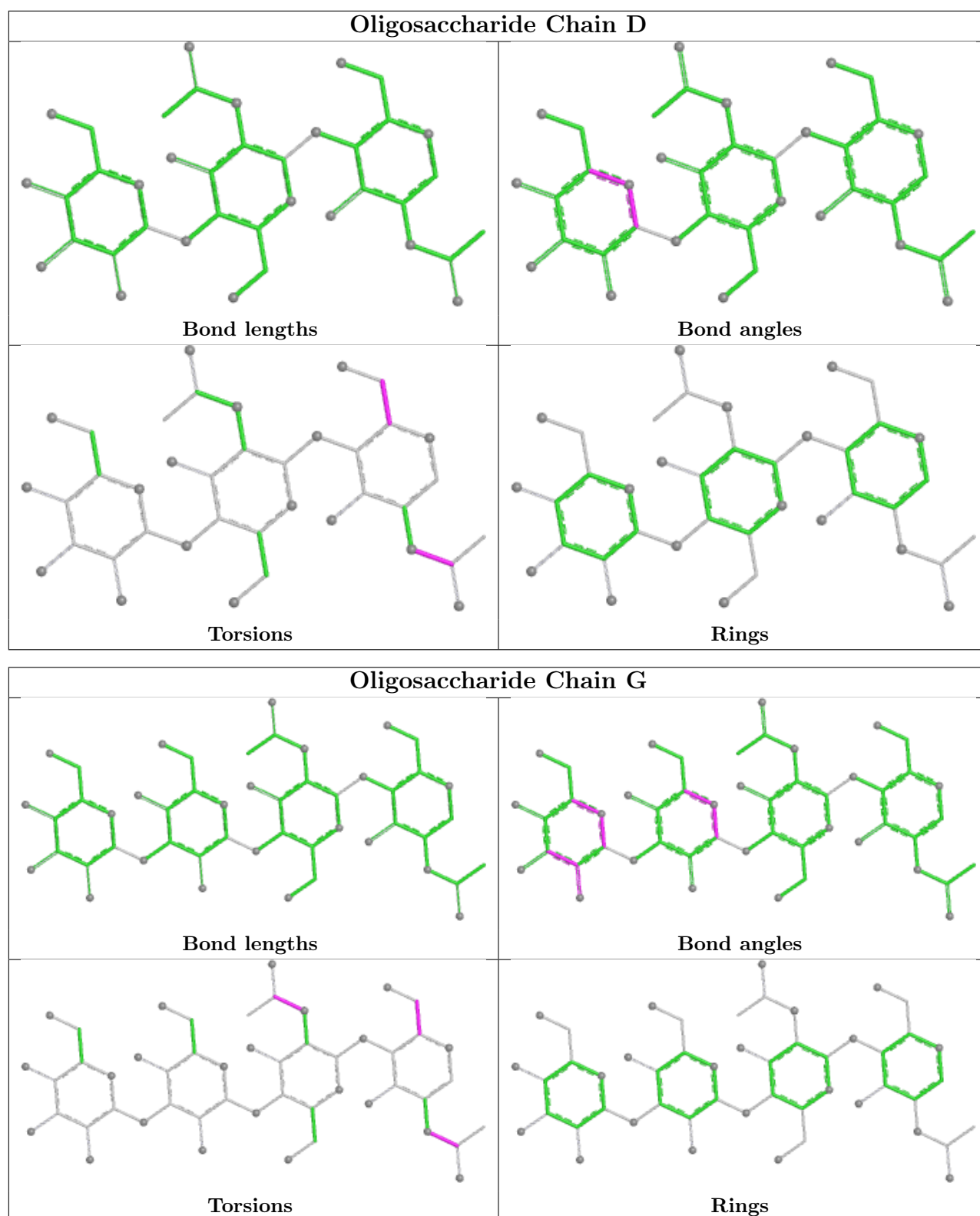
The following is a two-dimensional graphical depiction of Mogul quality analysis of bond lengths, bond angles, torsion angles, and ring geometry for oligosaccharide.











5.6 Ligand geometry [i](#)

9 ligands are modelled in this entry.

In the following table, the Counts columns list the number of bonds (or angles) for which Mogul statistics could be retrieved, the number of bonds (or angles) that are observed in the model and the number of bonds (or angles) that are defined in the Chemical Component Dictionary. The Link column lists molecule types, if any, to which the group is linked. The Z score for a bond length (or angle) is the number of standard deviations the observed value is removed from the expected value. A bond length (or angle) with $|Z| > 2$ is considered an outlier worth inspection. RMSZ is the root-mean-square of all Z scores of the bond lengths (or angles).

Mol	Type	Chain	Res	Link	Bond lengths			Bond angles		
					Counts	RMSZ	$\# Z > 2$	Counts	RMSZ	$\# Z > 2$
5	NAG	A	2802	1	14,14,15	0.33	0	17,19,21	0.56	0
5	NAG	A	2804	1	14,14,15	0.28	0	17,19,21	0.67	1 (5%)
5	NAG	A	2801	1	14,14,15	0.43	0	17,19,21	0.93	1 (5%)
5	NAG	A	2803	1	14,14,15	0.36	0	17,19,21	0.51	0
5	NAG	B	2801	1	14,14,15	0.33	0	17,19,21	0.53	0
5	NAG	B	2803	1	14,14,15	0.30	0	17,19,21	0.59	0
5	NAG	B	2804	1	14,14,15	0.28	0	17,19,21	0.93	1 (5%)
5	NAG	A	2805	1	14,14,15	0.29	0	17,19,21	0.92	1 (5%)
5	NAG	B	2802	1	14,14,15	0.32	0	17,19,21	0.55	0

In the following table, the Chirals column lists the number of chiral outliers, the number of chiral centers analysed, the number of these observed in the model and the number defined in the Chemical Component Dictionary. Similar counts are reported in the Torsion and Rings columns. '-' means no outliers of that kind were identified.

Mol	Type	Chain	Res	Link	Chirals	Torsions	Rings
5	NAG	A	2802	1	-	2/6/23/26	0/1/1/1
5	NAG	A	2804	1	-	0/6/23/26	0/1/1/1
5	NAG	A	2801	1	-	2/6/23/26	0/1/1/1
5	NAG	A	2803	1	-	0/6/23/26	0/1/1/1
5	NAG	B	2801	1	-	1/6/23/26	0/1/1/1
5	NAG	B	2803	1	-	0/6/23/26	0/1/1/1
5	NAG	B	2804	1	-	2/6/23/26	0/1/1/1
5	NAG	A	2805	1	-	2/6/23/26	0/1/1/1
5	NAG	B	2802	1	-	2/6/23/26	0/1/1/1

There are no bond length outliers.

All (4) bond angle outliers are listed below:

Mol	Chain	Res	Type	Atoms	Z	Observed(°)	Ideal(°)
5	B	2804	NAG	C2-N2-C7	2.68	126.49	122.90
5	A	2801	NAG	C2-N2-C7	2.67	126.48	122.90

Continued on next page...

Continued from previous page...

Mol	Chain	Res	Type	Atoms	Z	Observed(°)	Ideal(°)
5	A	2805	NAG	C2-N2-C7	2.66	126.47	122.90
5	A	2804	NAG	C1-O5-C5	2.37	115.36	112.19

There are no chirality outliers.

5 of 11 torsion outliers are listed below:

Mol	Chain	Res	Type	Atoms
5	A	2802	NAG	C8-C7-N2-C2
5	A	2802	NAG	O7-C7-N2-C2
5	B	2802	NAG	C8-C7-N2-C2
5	B	2802	NAG	O7-C7-N2-C2
5	A	2805	NAG	C1-C2-N2-C7

There are no ring outliers.

No monomer is involved in short contacts.

5.7 Other polymers [i](#)

There are no such residues in this entry.

5.8 Polymer linkage issues [i](#)

There are no chain breaks in this entry.

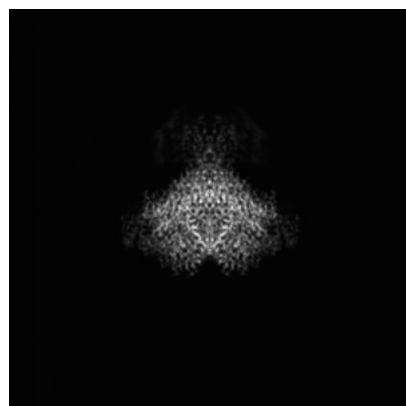
6 Map visualisation [i](#)

This section contains visualisations of the EMDB entry EMD-50976. These allow visual inspection of the internal detail of the map and identification of artifacts.

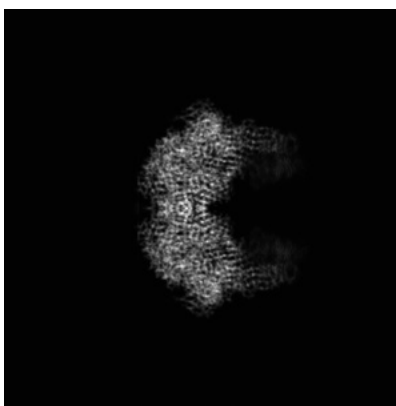
Images derived from a raw map, generated by summing the deposited half-maps, are presented below the corresponding image components of the primary map to allow further visual inspection and comparison with those of the primary map.

6.1 Orthogonal projections [i](#)

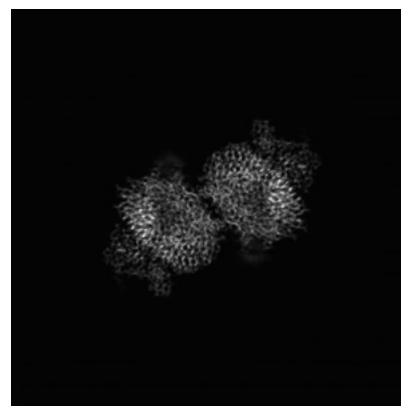
6.1.1 Primary map



X

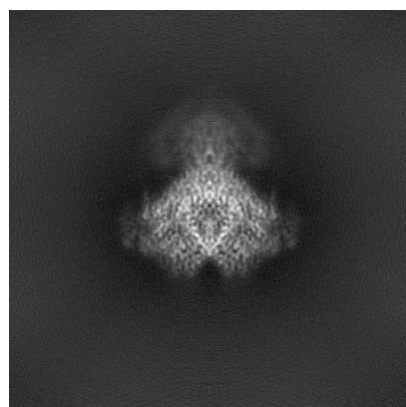


Y

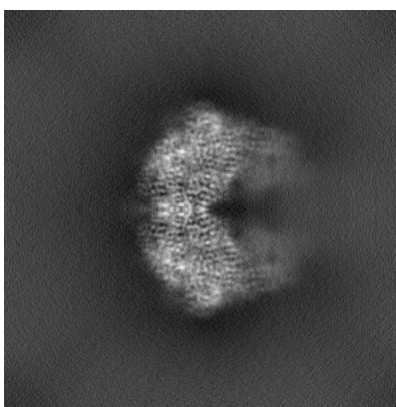


Z

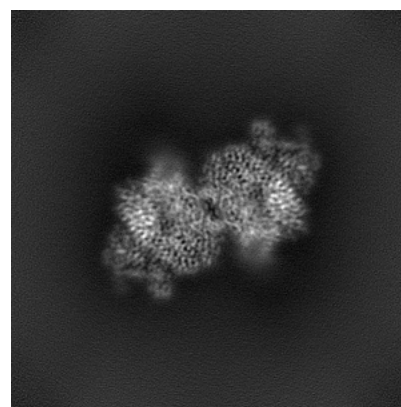
6.1.2 Raw map



X



Y

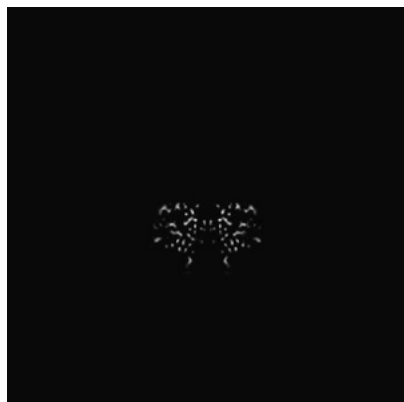


Z

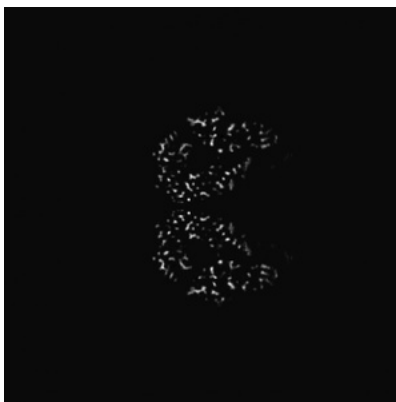
The images above show the map projected in three orthogonal directions.

6.2 Central slices [i](#)

6.2.1 Primary map



X Index: 175

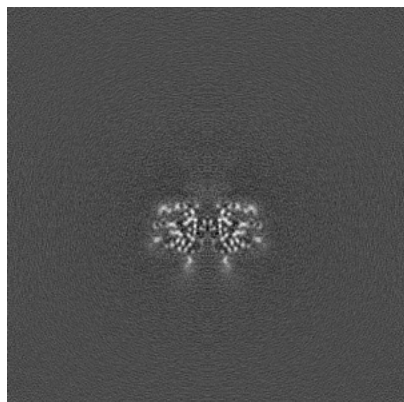


Y Index: 175

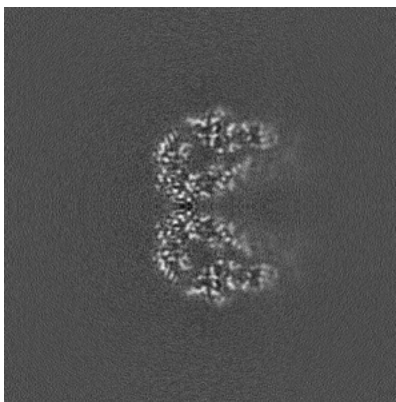


Z Index: 175

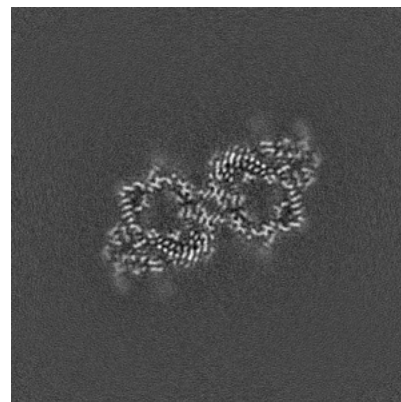
6.2.2 Raw map



X Index: 175



Y Index: 175



Z Index: 175

The images above show central slices of the map in three orthogonal directions.

6.3 Largest variance slices [i](#)

6.3.1 Primary map



X Index: 121

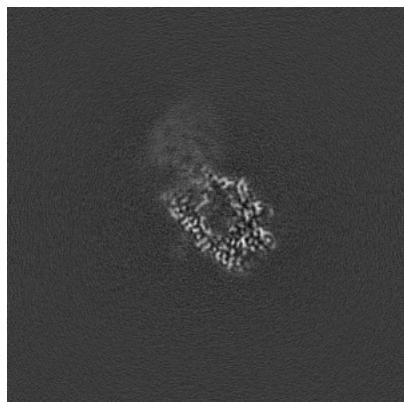


Y Index: 163

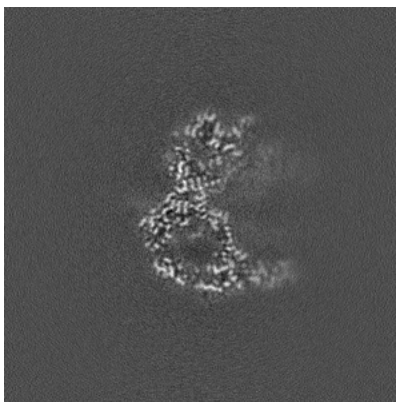


Z Index: 175

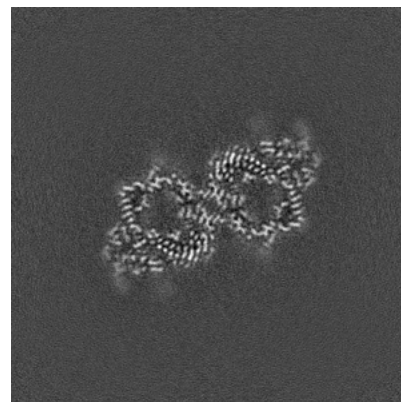
6.3.2 Raw map



X Index: 205



Y Index: 163

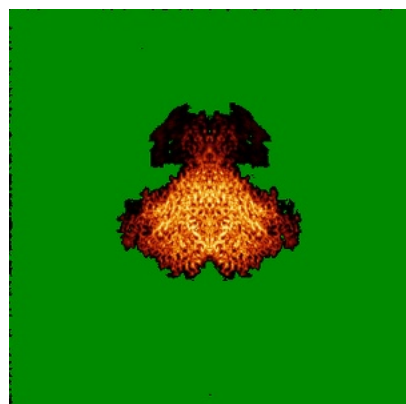


Z Index: 175

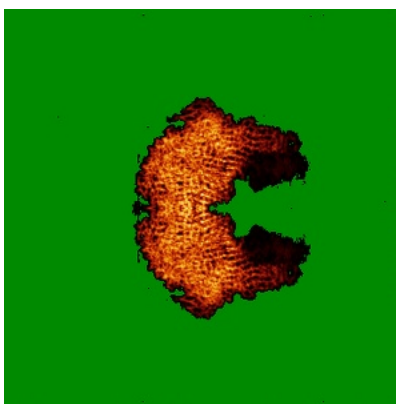
The images above show the largest variance slices of the map in three orthogonal directions.

6.4 Orthogonal standard-deviation projections (False-color) [i](#)

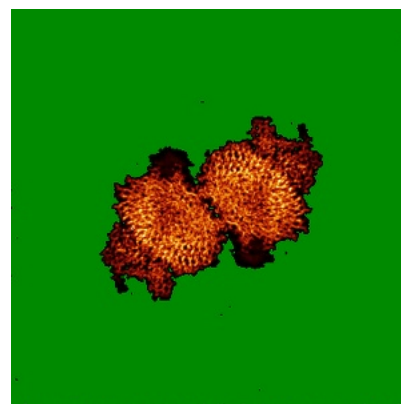
6.4.1 Primary map



X

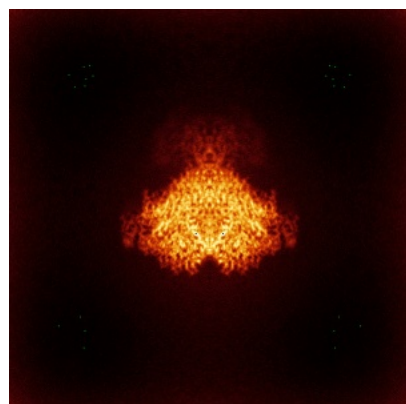


Y

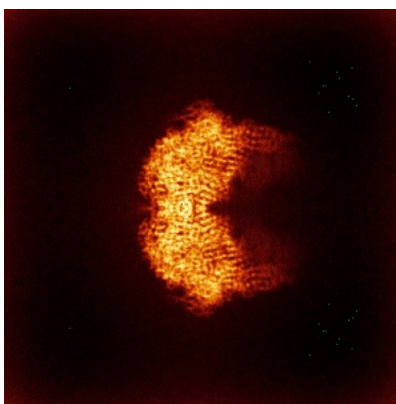


Z

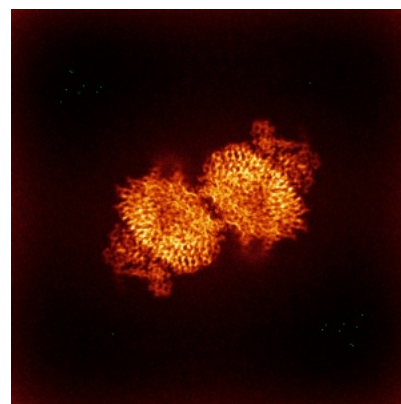
6.4.2 Raw map



X



Y



Z

The images above show the map standard deviation projections with false color in three orthogonal directions. Minimum values are shown in green, max in blue, and dark to light orange shades represent small to large values respectively.

6.5 Orthogonal surface views [i](#)

6.5.1 Primary map



The images above show the 3D surface view of the map at the recommended contour level 0.134. These images, in conjunction with the slice images, may facilitate assessment of whether an appropriate contour level has been provided.

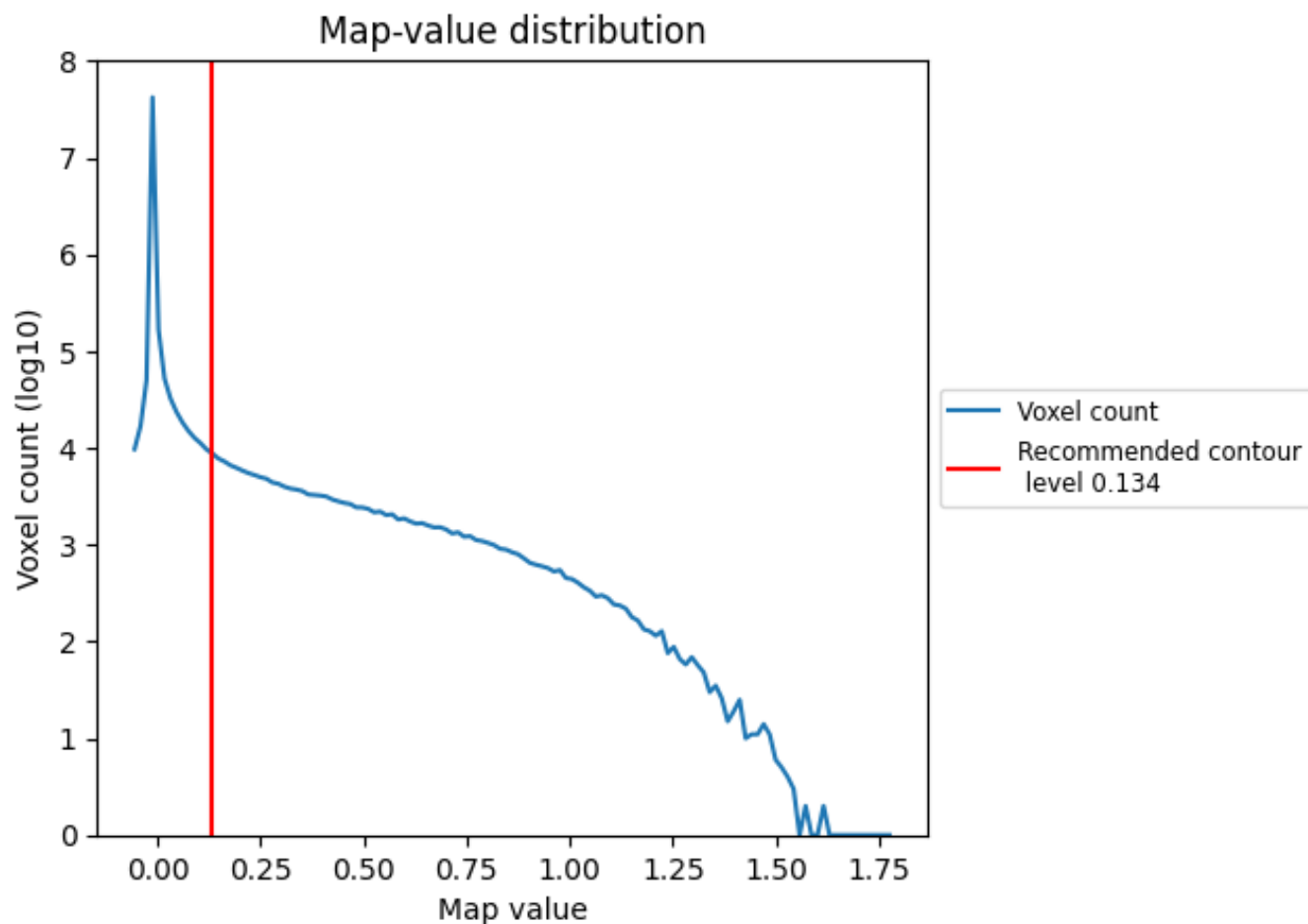
6.6 Mask visualisation [i](#)

This section was not generated. No masks/segmentation were deposited.

7 Map analysis [i](#)

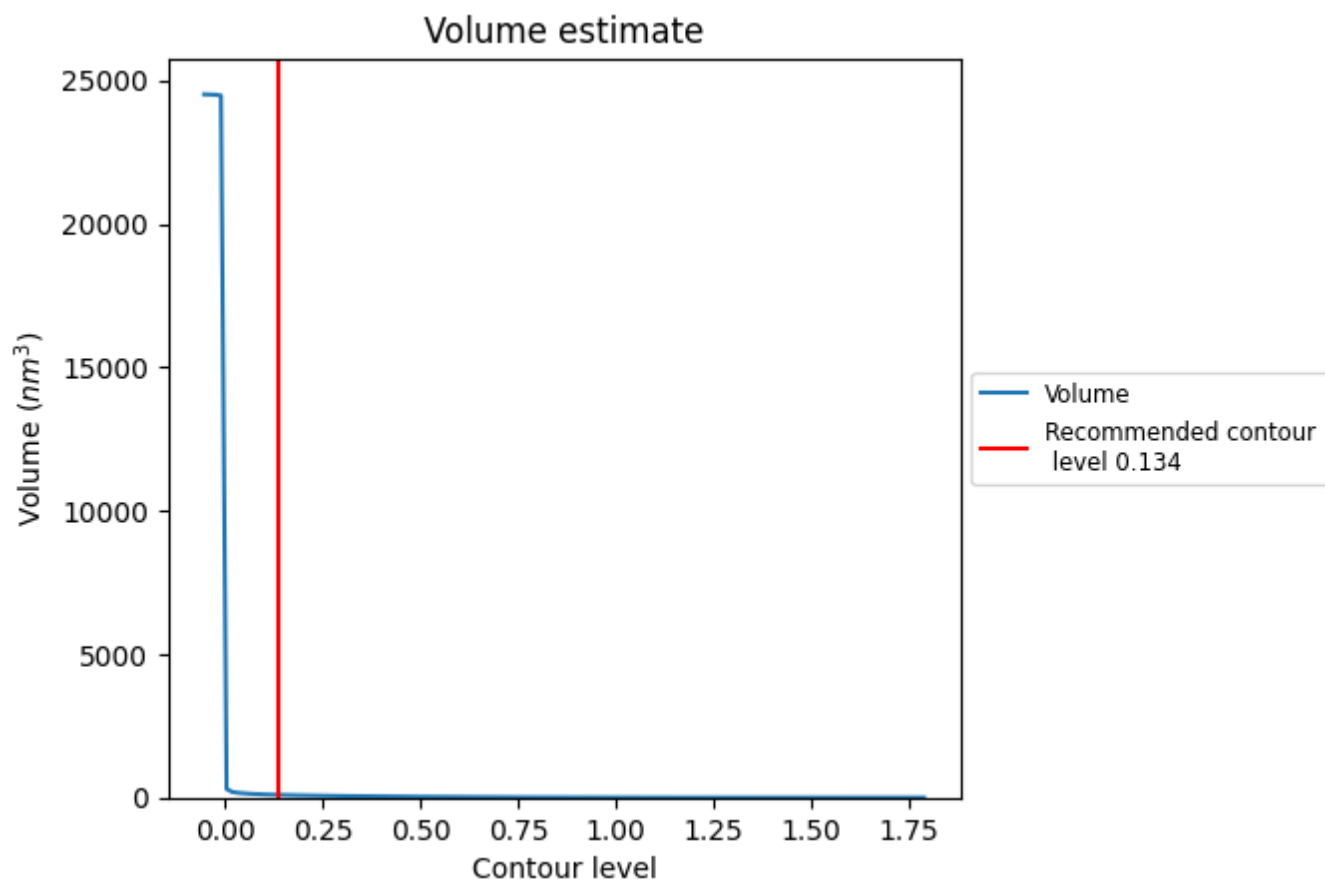
This section contains the results of statistical analysis of the map.

7.1 Map-value distribution [i](#)



The map-value distribution is plotted in 128 intervals along the x-axis. The y-axis is logarithmic. A spike in this graph at zero usually indicates that the volume has been masked.

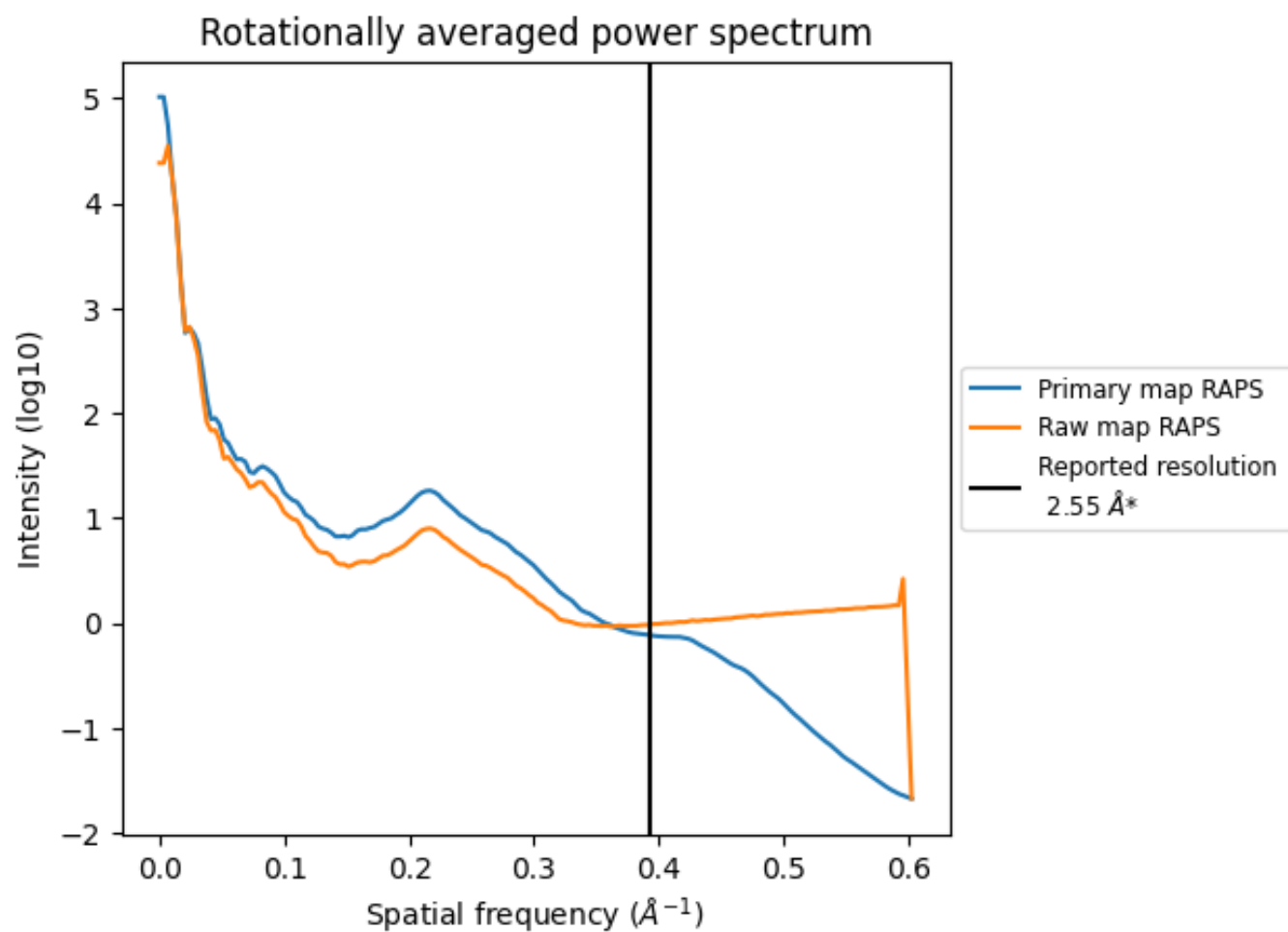
7.2 Volume estimate [i](#)



The volume at the recommended contour level is 94 nm^3 ; this corresponds to an approximate mass of 85 kDa.

The volume estimate graph shows how the enclosed volume varies with the contour level. The recommended contour level is shown as a vertical line and the intersection between the line and the curve gives the volume of the enclosed surface at the given level.

7.3 Rotationally averaged power spectrum ⓘ

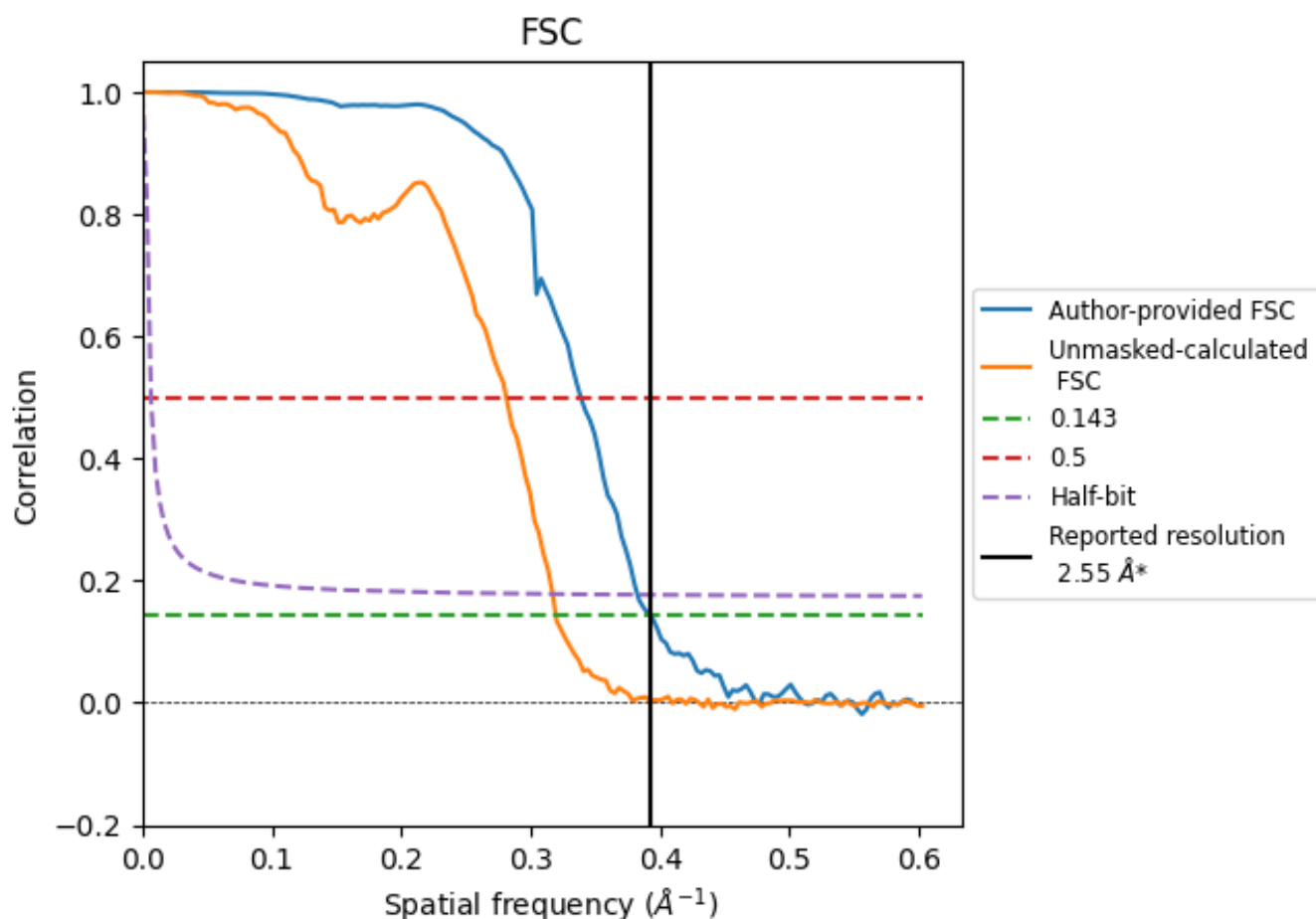


*Reported resolution corresponds to spatial frequency of 0.392 Å⁻¹

8 Fourier-Shell correlation [i](#)

Fourier-Shell Correlation (FSC) is the most commonly used method to estimate the resolution of single-particle and subtomogram-averaged maps. The shape of the curve depends on the imposed symmetry, mask and whether or not the two 3D reconstructions used were processed from a common reference. The reported resolution is shown as a black line. A curve is displayed for the half-bit criterion in addition to lines showing the 0.143 gold standard cut-off and 0.5 cut-off.

8.1 FSC [i](#)



*Reported resolution corresponds to spatial frequency of 0.392 \AA^{-1}

8.2 Resolution estimates [i](#)

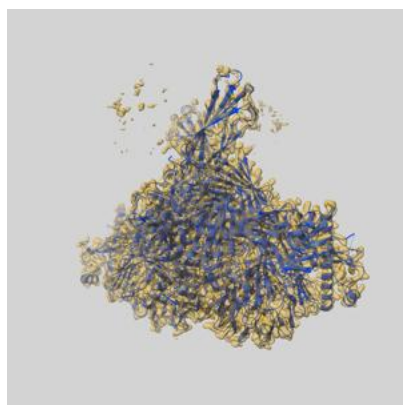
Resolution estimate (Å)	Estimation criterion (FSC cut-off)		
	0.143	0.5	Half-bit
Reported by author	2.55	-	-
Author-provided FSC curve	2.55	2.95	2.61
Unmasked-calculated*	3.13	3.56	3.15

*Resolution estimate based on FSC curve calculated by comparison of deposited half-maps. The value from deposited half-maps intersecting FSC 0.143 CUT-OFF 3.13 differs from the reported value 2.55 by more than 10 %

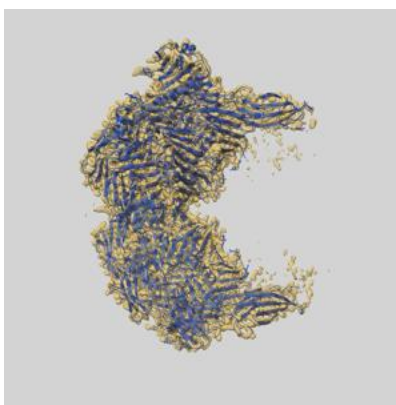
9 Map-model fit [i](#)

This section contains information regarding the fit between EMDB map EMD-50976 and PDB model 9G2H. Per-residue inclusion information can be found in section [3](#) on page [9](#).

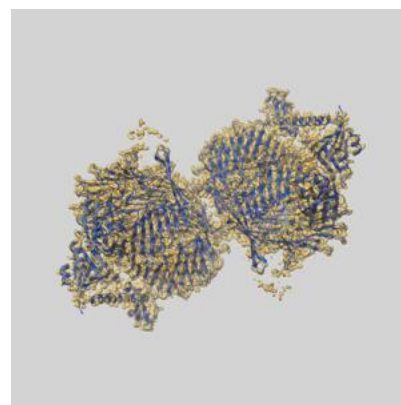
9.1 Map-model overlay [i](#)



X



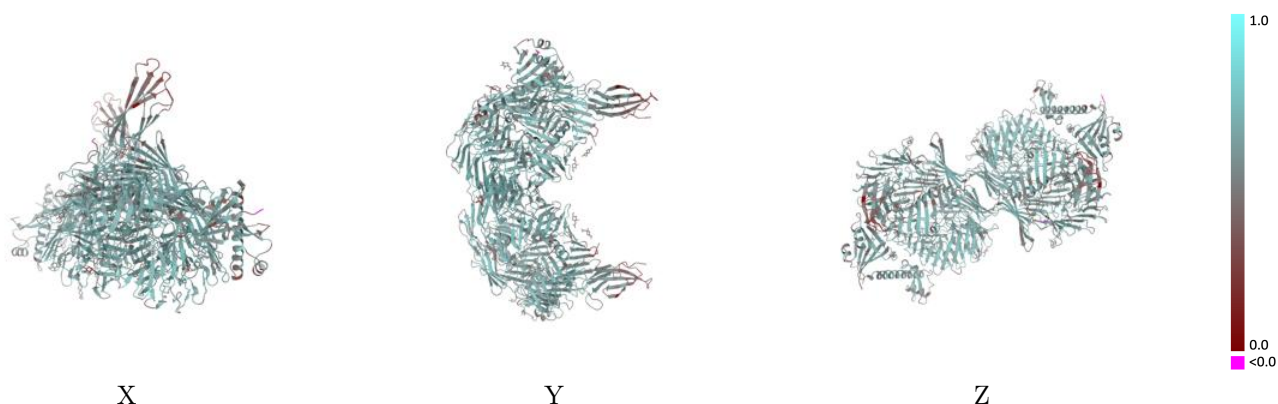
Y



Z

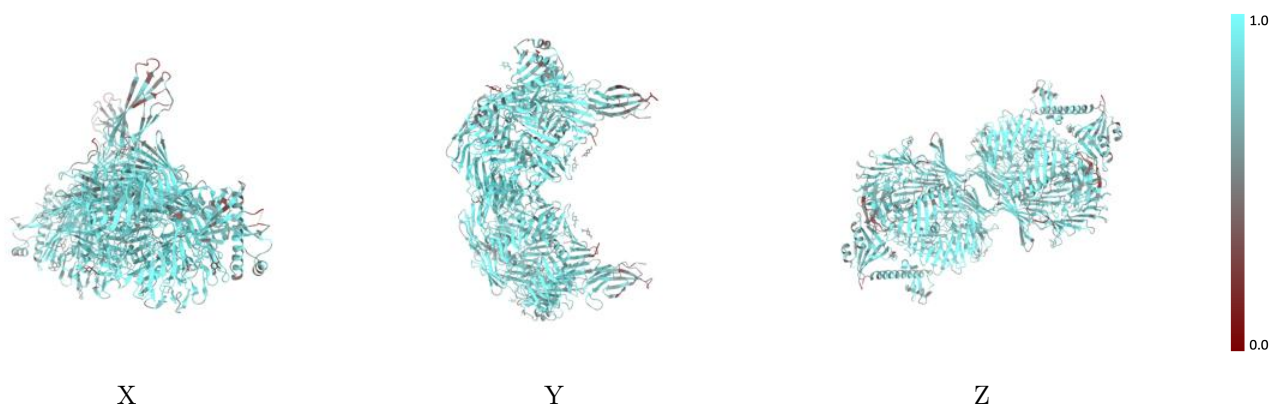
The images above show the 3D surface view of the map at the recommended contour level 0.134 at 50% transparency in yellow overlaid with a ribbon representation of the model coloured in blue. These images allow for the visual assessment of the quality of fit between the atomic model and the map.

9.2 Q-score mapped to coordinate model [i](#)



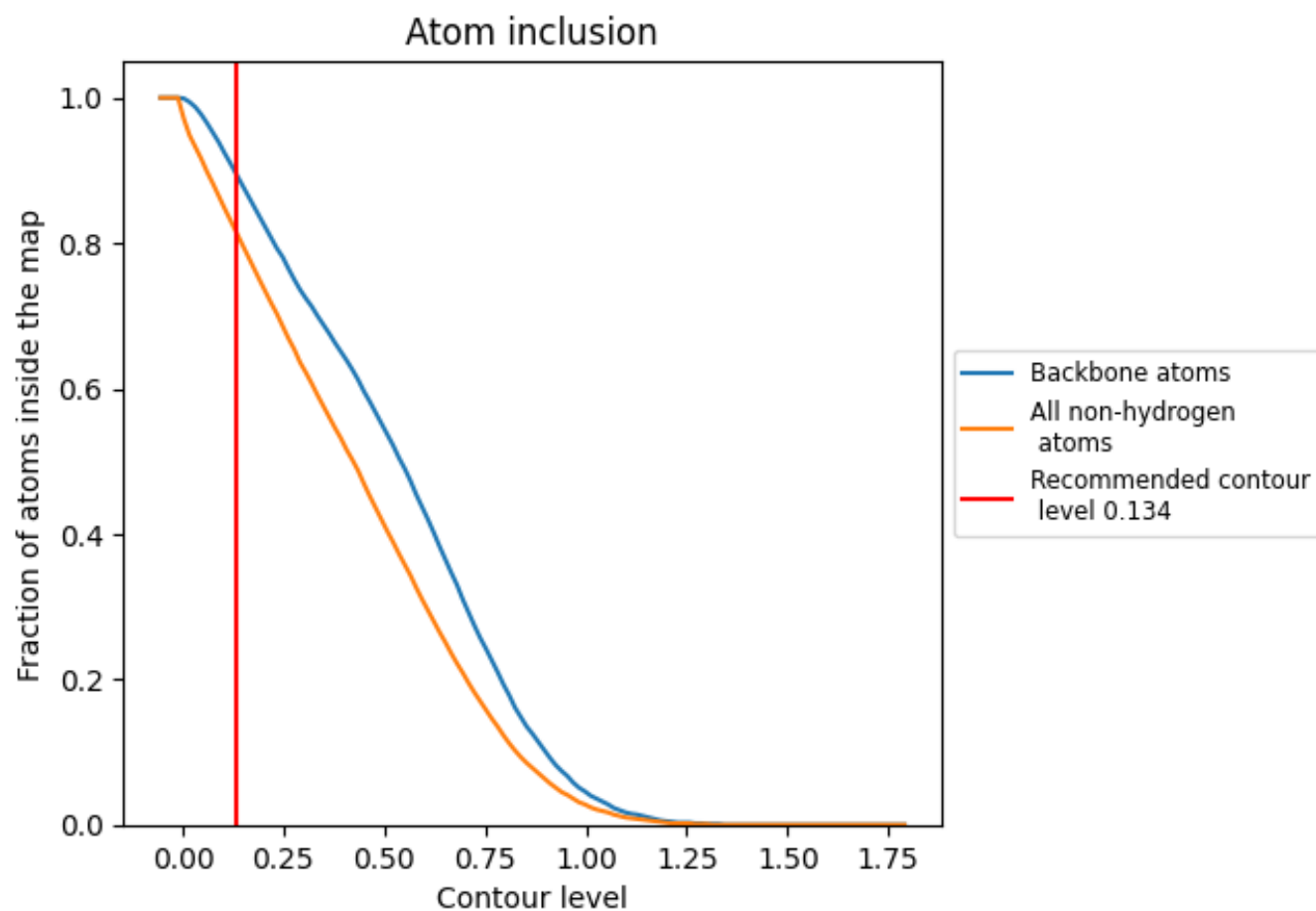
The images above show the model with each residue coloured according to its Q-score. This shows their resolvability in the map with higher Q-score values reflecting better resolvability. Please note: Q-score is calculating the resolvability of atoms, and thus high values are only expected at resolutions at which atoms can be resolved. Low Q-score values may therefore be expected for many entries.

9.3 Atom inclusion mapped to coordinate model [i](#)



The images above show the model with each residue coloured according to its atom inclusion. This shows to what extent they are inside the map at the recommended contour level (0.134).

9.4 Atom inclusion ⓘ



At the recommended contour level, 89% of all backbone atoms, 81% of all non-hydrogen atoms, are inside the map.

9.5 Map-model fit summary ⓘ

The table lists the average atom inclusion at the recommended contour level (0.134) and Q-score for the entire model and for each chain.

Chain	Atom inclusion	Q-score
All	<div></div> 0.8140	<div></div> 0.5890
A	<div></div> 0.8160	<div></div> 0.5900
B	<div></div> 0.8160	<div></div> 0.5900
C	<div></div> 0.6070	<div></div> 0.4640
D	<div></div> 0.7180	<div></div> 0.5590
E	<div></div> 0.5360	<div></div> 0.4760
F	<div></div> 0.6430	<div></div> 0.4500
G	<div></div> 0.6600	<div></div> 0.4750
H	<div></div> 0.4290	<div></div> 0.2870

1.0

0.0

<0.0