



wwPDB EM Validation Summary Report ⓘ

Jun 10, 2024 – 04:45 AM EDT

PDB ID : 8FC9
EMDB ID : EMD-28977
Title : Cryo-EM structure of the human TRPV4 - RhoA, apo condition
Authors : Kwon, D.H.; Lee, S.-Y.; Zhang, F.
Deposited on : 2022-12-01
Resolution : 3.75 Å(reported)

This is a wwPDB EM Validation Summary Report for a publicly released PDB entry.

We welcome your comments at validation@mail.wwpdb.org

A user guide is available at

<https://www.wwpdb.org/validation/2017/EMValidationReportHelp>

with specific help available everywhere you see the ⓘ symbol.

The types of validation reports are described at

<http://www.wwpdb.org/validation/2017/FAQs#types>.

The following versions of software and data (see [references ⓘ](#)) were used in the production of this report:

EMDB validation analysis : 0.0.1.dev92
Mogul : 1.8.5 (274361), CSD as541be (2020)
MolProbity : 4.02b-467
buster-report : 1.1.7 (2018)
Percentile statistics : 20191225.v01 (using entries in the PDB archive December 25th 2019)
MapQ : 1.9.13
Ideal geometry (proteins) : Engh & Huber (2001)
Ideal geometry (DNA, RNA) : Parkinson et al. (1996)
Validation Pipeline (wwPDB-VP) : 2.36.2

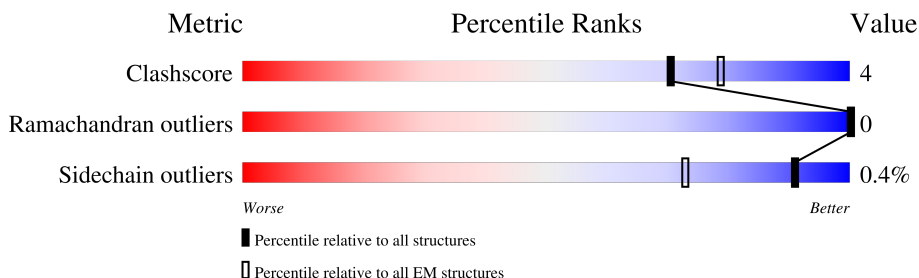
1 Overall quality at a glance

The following experimental techniques were used to determine the structure:

ELECTRON MICROSCOPY

The reported resolution of this entry is 3.75 Å.

Percentile scores (ranging between 0-100) for global validation metrics of the entry are shown in the following graphic. The table shows the number of entries on which the scores are based.



Metric	Whole archive (#Entries)	EM structures (#Entries)
Clashscore	158937	4297
Ramachandran outliers	154571	4023
Sidechain outliers	154315	3826

The table below summarises the geometric issues observed across the polymeric chains and their fit to the map. The red, orange, yellow and green segments of the bar indicate the fraction of residues that contain outliers for ≥ 3 , 2, 1 and 0 types of geometric quality criteria respectively. A grey segment represents the fraction of residues that are not modelled. The numeric value for each fraction is indicated below the corresponding segment, with a dot representing fractions $\leq 5\%$. The upper red bar (where present) indicates the fraction of residues that have poor fit to the EM map (all-atom inclusion $< 40\%$). The numeric value is given above the bar.

Mol	Chain	Length	Quality of chain
1	A	901	<div> <div>5%</div> <div>59%</div> <div>5%</div> <div>35%</div> </div>
1	B	901	<div> <div>5%</div> <div>59%</div> <div>5%</div> <div>35%</div> </div>
1	C	901	<div> <div>5%</div> <div>59%</div> <div>5%</div> <div>35%</div> </div>
1	D	901	<div> <div>5%</div> <div>59%</div> <div>6%</div> <div>35%</div> </div>
2	E	193	<div> <div>80%</div> <div>93%</div> <div>6%</div> <div>.</div> </div>
2	F	193	<div> <div>80%</div> <div>93%</div> <div>6%</div> <div>.</div> </div>
2	G	193	<div> <div>82%</div> <div>92%</div> <div>7%</div> <div>.</div> </div>
2	H	193	<div> <div>78%</div> <div>91%</div> <div>7%</div> <div>.</div> </div>

2 Entry composition

There are 4 unique types of molecules in this entry. The entry contains 41172 atoms, of which 19360 are hydrogens and 0 are deuteriums.

In the tables below, the AltConf column contains the number of residues with at least one atom in alternate conformation and the Trace column contains the number of residues modelled with at most 2 atoms.

- Molecule 1 is a protein called Transient receptor potential cation channel subfamily V member 4.

Mol	Chain	Residues	Atoms						AltConf	Trace
1	A	583	Total	C	H	N	O	S	0	0
			7676	2608	3595	720	736	17		
1	B	583	Total	C	H	N	O	S	0	0
			7676	2608	3595	720	736	17		
1	C	583	Total	C	H	N	O	S	0	0
			7676	2608	3595	720	736	17		
1	D	583	Total	C	H	N	O	S	0	0
			7676	2608	3595	720	736	17		

There are 120 discrepancies between the modelled and reference sequences:

Chain	Residue	Modelled	Actual	Comment	Reference
A	872	GLU	-	expression tag	UNP Q9HBA0
A	873	ASN	-	expression tag	UNP Q9HBA0
A	874	SER	-	expression tag	UNP Q9HBA0
A	875	LEU	-	expression tag	UNP Q9HBA0
A	876	GLU	-	expression tag	UNP Q9HBA0
A	877	VAL	-	expression tag	UNP Q9HBA0
A	878	LEU	-	expression tag	UNP Q9HBA0
A	879	PHE	-	expression tag	UNP Q9HBA0
A	880	GLN	-	expression tag	UNP Q9HBA0
A	881	GLY	-	expression tag	UNP Q9HBA0
A	882	PRO	-	expression tag	UNP Q9HBA0
A	883	ASP	-	expression tag	UNP Q9HBA0
A	884	TYR	-	expression tag	UNP Q9HBA0
A	885	LYS	-	expression tag	UNP Q9HBA0
A	886	ASP	-	expression tag	UNP Q9HBA0
A	887	ASP	-	expression tag	UNP Q9HBA0
A	888	ASP	-	expression tag	UNP Q9HBA0
A	889	ASP	-	expression tag	UNP Q9HBA0
A	890	LYS	-	expression tag	UNP Q9HBA0
A	891	ALA	-	expression tag	UNP Q9HBA0
A	892	HIS	-	expression tag	UNP Q9HBA0

Continued on next page...

Continued from previous page...

Chain	Residue	Modelled	Actual	Comment	Reference
A	893	HIS	-	expression tag	UNP Q9HBA0
A	894	HIS	-	expression tag	UNP Q9HBA0
A	895	HIS	-	expression tag	UNP Q9HBA0
A	896	HIS	-	expression tag	UNP Q9HBA0
A	897	HIS	-	expression tag	UNP Q9HBA0
A	898	HIS	-	expression tag	UNP Q9HBA0
A	899	HIS	-	expression tag	UNP Q9HBA0
A	900	HIS	-	expression tag	UNP Q9HBA0
A	901	HIS	-	expression tag	UNP Q9HBA0
B	872	GLU	-	expression tag	UNP Q9HBA0
B	873	ASN	-	expression tag	UNP Q9HBA0
B	874	SER	-	expression tag	UNP Q9HBA0
B	875	LEU	-	expression tag	UNP Q9HBA0
B	876	GLU	-	expression tag	UNP Q9HBA0
B	877	VAL	-	expression tag	UNP Q9HBA0
B	878	LEU	-	expression tag	UNP Q9HBA0
B	879	PHE	-	expression tag	UNP Q9HBA0
B	880	GLN	-	expression tag	UNP Q9HBA0
B	881	GLY	-	expression tag	UNP Q9HBA0
B	882	PRO	-	expression tag	UNP Q9HBA0
B	883	ASP	-	expression tag	UNP Q9HBA0
B	884	TYR	-	expression tag	UNP Q9HBA0
B	885	LYS	-	expression tag	UNP Q9HBA0
B	886	ASP	-	expression tag	UNP Q9HBA0
B	887	ASP	-	expression tag	UNP Q9HBA0
B	888	ASP	-	expression tag	UNP Q9HBA0
B	889	ASP	-	expression tag	UNP Q9HBA0
B	890	LYS	-	expression tag	UNP Q9HBA0
B	891	ALA	-	expression tag	UNP Q9HBA0
B	892	HIS	-	expression tag	UNP Q9HBA0
B	893	HIS	-	expression tag	UNP Q9HBA0
B	894	HIS	-	expression tag	UNP Q9HBA0
B	895	HIS	-	expression tag	UNP Q9HBA0
B	896	HIS	-	expression tag	UNP Q9HBA0
B	897	HIS	-	expression tag	UNP Q9HBA0
B	898	HIS	-	expression tag	UNP Q9HBA0
B	899	HIS	-	expression tag	UNP Q9HBA0
B	900	HIS	-	expression tag	UNP Q9HBA0
B	901	HIS	-	expression tag	UNP Q9HBA0
C	872	GLU	-	expression tag	UNP Q9HBA0
C	873	ASN	-	expression tag	UNP Q9HBA0
C	874	SER	-	expression tag	UNP Q9HBA0

Continued on next page...

Continued from previous page...

Chain	Residue	Modelled	Actual	Comment	Reference
C	875	LEU	-	expression tag	UNP Q9HBA0
C	876	GLU	-	expression tag	UNP Q9HBA0
C	877	VAL	-	expression tag	UNP Q9HBA0
C	878	LEU	-	expression tag	UNP Q9HBA0
C	879	PHE	-	expression tag	UNP Q9HBA0
C	880	GLN	-	expression tag	UNP Q9HBA0
C	881	GLY	-	expression tag	UNP Q9HBA0
C	882	PRO	-	expression tag	UNP Q9HBA0
C	883	ASP	-	expression tag	UNP Q9HBA0
C	884	TYR	-	expression tag	UNP Q9HBA0
C	885	LYS	-	expression tag	UNP Q9HBA0
C	886	ASP	-	expression tag	UNP Q9HBA0
C	887	ASP	-	expression tag	UNP Q9HBA0
C	888	ASP	-	expression tag	UNP Q9HBA0
C	889	ASP	-	expression tag	UNP Q9HBA0
C	890	LYS	-	expression tag	UNP Q9HBA0
C	891	ALA	-	expression tag	UNP Q9HBA0
C	892	HIS	-	expression tag	UNP Q9HBA0
C	893	HIS	-	expression tag	UNP Q9HBA0
C	894	HIS	-	expression tag	UNP Q9HBA0
C	895	HIS	-	expression tag	UNP Q9HBA0
C	896	HIS	-	expression tag	UNP Q9HBA0
C	897	HIS	-	expression tag	UNP Q9HBA0
C	898	HIS	-	expression tag	UNP Q9HBA0
C	899	HIS	-	expression tag	UNP Q9HBA0
C	900	HIS	-	expression tag	UNP Q9HBA0
C	901	HIS	-	expression tag	UNP Q9HBA0
D	872	GLU	-	expression tag	UNP Q9HBA0
D	873	ASN	-	expression tag	UNP Q9HBA0
D	874	SER	-	expression tag	UNP Q9HBA0
D	875	LEU	-	expression tag	UNP Q9HBA0
D	876	GLU	-	expression tag	UNP Q9HBA0
D	877	VAL	-	expression tag	UNP Q9HBA0
D	878	LEU	-	expression tag	UNP Q9HBA0
D	879	PHE	-	expression tag	UNP Q9HBA0
D	880	GLN	-	expression tag	UNP Q9HBA0
D	881	GLY	-	expression tag	UNP Q9HBA0
D	882	PRO	-	expression tag	UNP Q9HBA0
D	883	ASP	-	expression tag	UNP Q9HBA0
D	884	TYR	-	expression tag	UNP Q9HBA0
D	885	LYS	-	expression tag	UNP Q9HBA0
D	886	ASP	-	expression tag	UNP Q9HBA0

Continued on next page...

Continued from previous page...

Chain	Residue	Modelled	Actual	Comment	Reference
D	887	ASP	-	expression tag	UNP Q9HBA0
D	888	ASP	-	expression tag	UNP Q9HBA0
D	889	ASP	-	expression tag	UNP Q9HBA0
D	890	LYS	-	expression tag	UNP Q9HBA0
D	891	ALA	-	expression tag	UNP Q9HBA0
D	892	HIS	-	expression tag	UNP Q9HBA0
D	893	HIS	-	expression tag	UNP Q9HBA0
D	894	HIS	-	expression tag	UNP Q9HBA0
D	895	HIS	-	expression tag	UNP Q9HBA0
D	896	HIS	-	expression tag	UNP Q9HBA0
D	897	HIS	-	expression tag	UNP Q9HBA0
D	898	HIS	-	expression tag	UNP Q9HBA0
D	899	HIS	-	expression tag	UNP Q9HBA0
D	900	HIS	-	expression tag	UNP Q9HBA0
D	901	HIS	-	expression tag	UNP Q9HBA0

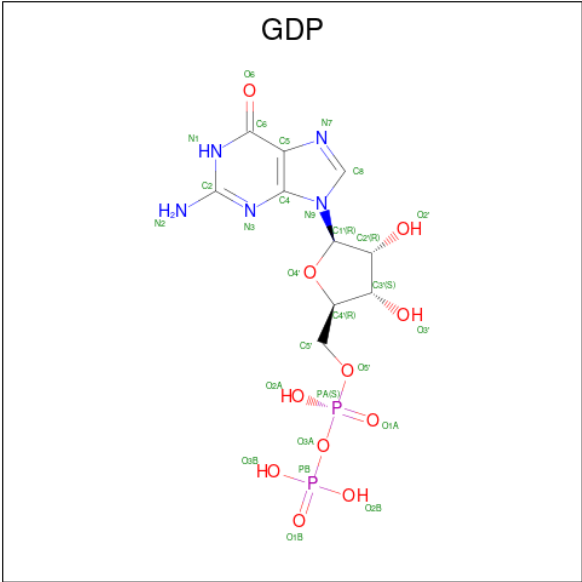
- Molecule 2 is a protein called Transforming protein RhoA.

Mol	Chain	Residues	Atoms						AltConf	Trace
2	E	190	Total	C	H	N	O	S	0	0
			2576	855	1233	234	245	9		
2	F	190	Total	C	H	N	O	S	0	0
			2576	855	1233	234	245	9		
2	G	190	Total	C	H	N	O	S	0	0
			2576	855	1233	234	245	9		
2	H	190	Total	C	H	N	O	S	0	0
			2576	855	1233	234	245	9		

- Molecule 3 is MAGNESIUM ION (three-letter code: MG) (formula: Mg).

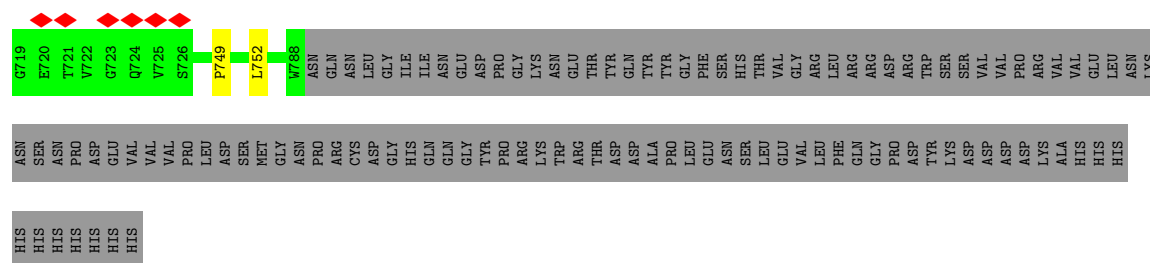
Mol	Chain	Residues	Atoms		AltConf
3	E	1	Total	Mg	0
			1	1	
3	F	1	Total	Mg	0
			1	1	
3	G	1	Total	Mg	0
			1	1	
3	H	1	Total	Mg	0
			1	1	

- Molecule 4 is GUANOSINE-5'-DIPHOSPHATE (three-letter code: GDP) (formula: C₁₀H₁₅N₅O₁₁P₂).

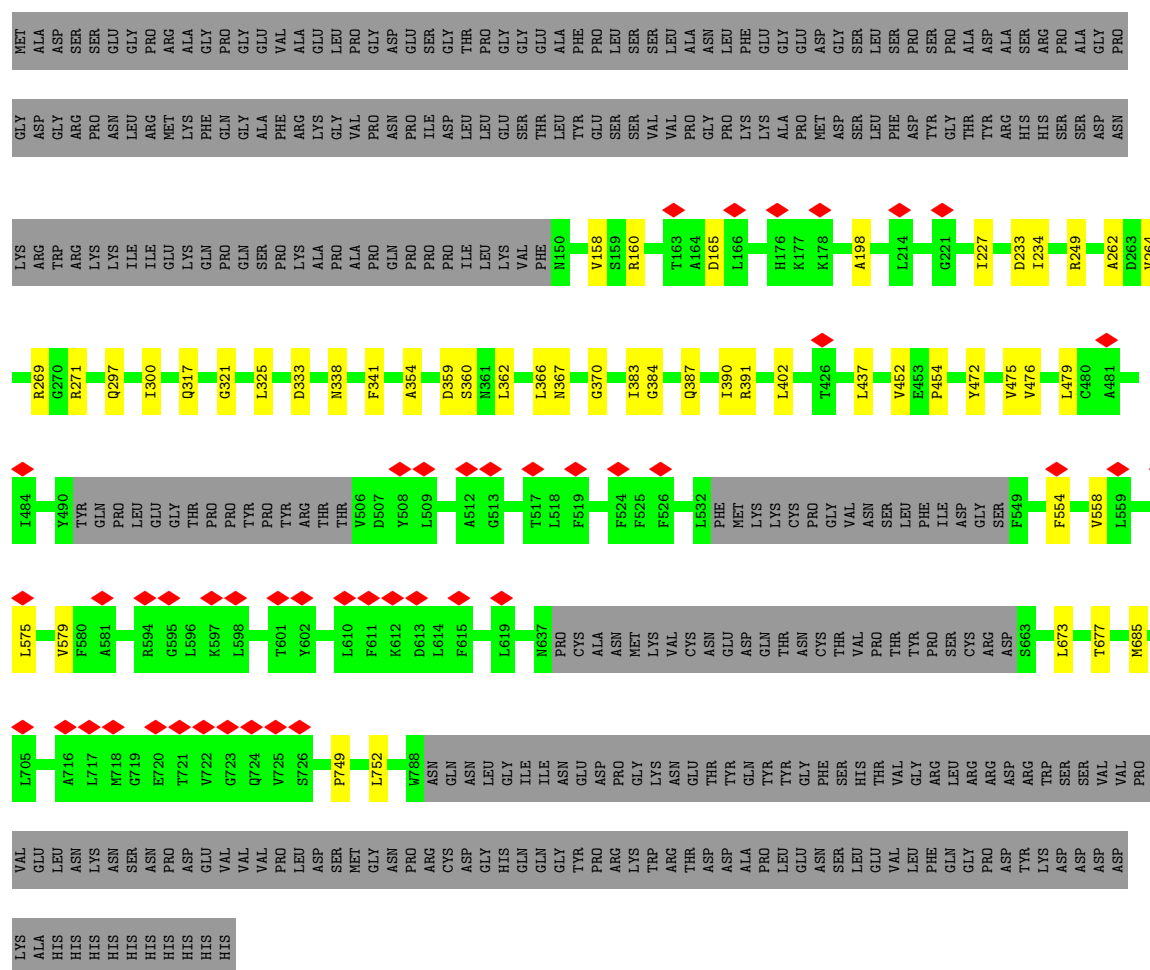


Mol	Chain	Residues	Atoms						AltConf
4	E	1	Total	C	H	N	O	P	0
			40	10	12	5	11	2	
4	F	1	Total	C	H	N	O	P	0
			40	10	12	5	11	2	
4	G	1	Total	C	H	N	O	P	0
			40	10	12	5	11	2	
4	H	1	Total	C	H	N	O	P	0
			40	10	12	5	11	2	

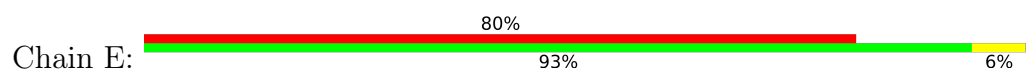


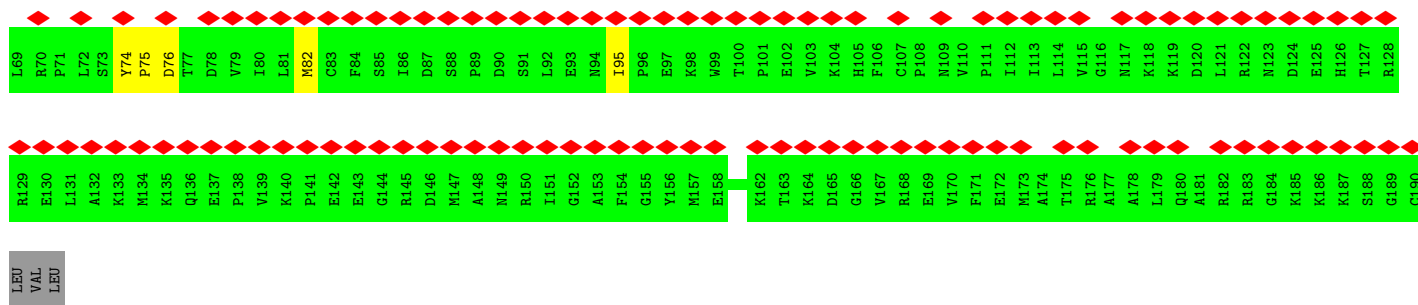


- Molecule 1: Transient receptor potential cation channel subfamily V member 4

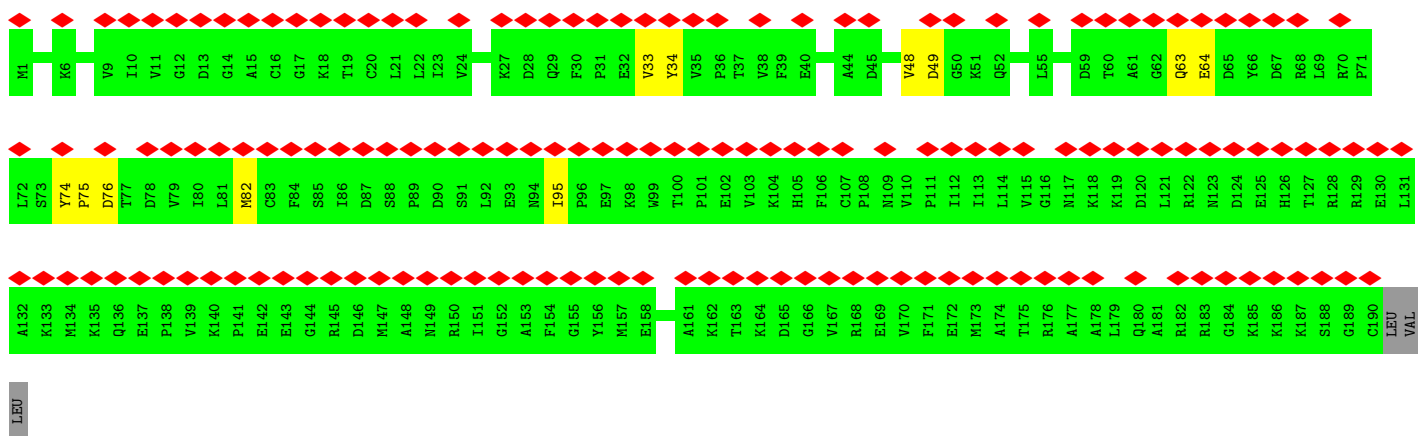
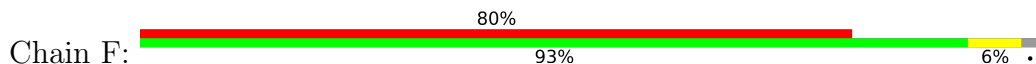


- Molecule 2: Transforming protein RhoA

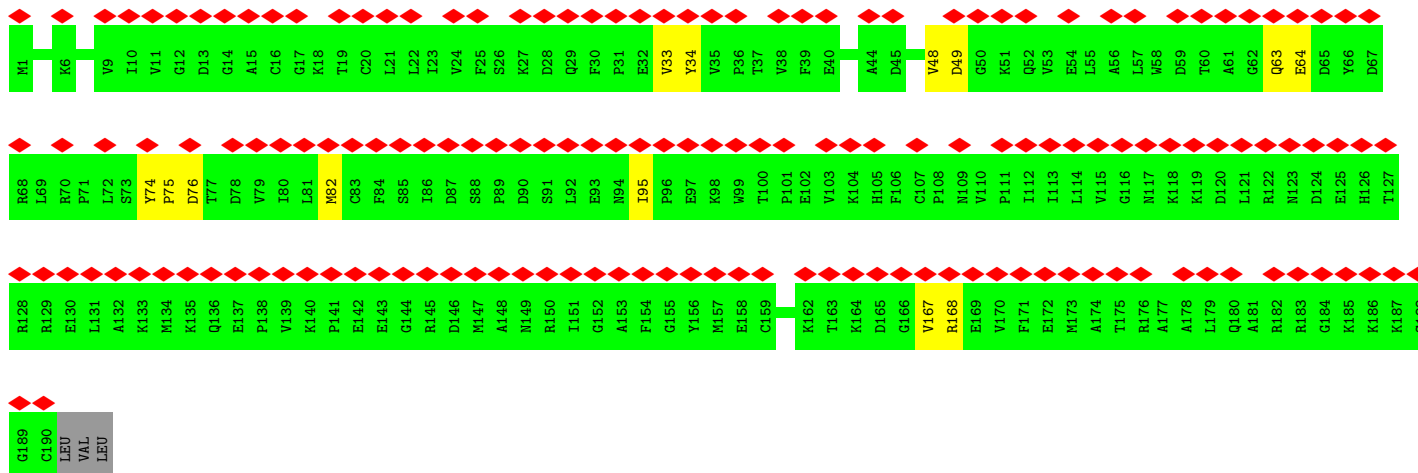
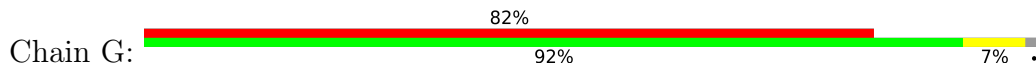




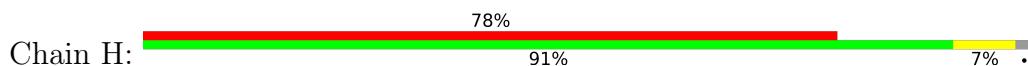
• Molecule 2: Transforming protein RhoA



• Molecule 2: Transforming protein RhoA



• Molecule 2: Transforming protein RhoA



K1										K6										V9										K27										V33										V48										V56										D59										D65										D71									
I10										I11										I12										D28										Y34										D49										A56										D59										D65										D71									
G12										G13										G14										Q29										Y35										D50										A61										D60										D66										D72									
D13										G14										F30										V36										G50										G62										D61										D67										D73																			
A15										C16										E32										V37										K51										Q52										D62										D68										L69																			
G17										K18										F31										V38										K52										A57										D63										D69										R70																			
T19										C20										F32										F39										A44										D45										D50										D64										R71																			
L21										L22										E33										E40										A45										D46										D51										D65										R72																			
I23										V24										Q29										E41										A46										D47										D52										D66										R73																			
K27										D28										Q29										F30										A47										D48										D53										D67										R74																			
D28										Q29										F31										V33										V34										D49										D54										D68										R75																			
Q29										F31										E32										Y34										V35										D50										D55										D69										R76																			
F30										F31										V33										V36										P36										D51										D56										D70										R77																			
F31										E32										Y34										V37										P37										D52										D57										D71										R78																			
E32										V33										V34										P38										T37										D53										D58										D72										R79																			
V33										Y34										V35										P39										T38										D54										D59										D73										R80																			
Y34										V36										P36										T37										V38										F39										E40										D74										R81																			
V36										P36										T37										V39										E40										A44										D45										D75										R82																			
P36										T37										V38										F39										E40										A45										D46										D76										R83																			
T37										V38										F39										E40										A46										D47										D77										R84																													
V38										F39										E40										A47										D48										D78										R85										R86																													
F39										E40										A48										D49										D79										R86										R87										R88																													
E40										A49										D50										D80										D81										D82										D83										D84																													
A49										D50										D80										D81										D82										D83										D84										D85																													
D50										D80										D81										D82										D83										D84										D85										D86																													
D80										D81										D82										D83										D84										D85										D86										D87																													
D81										D82										D83										D84										D85										D86										D87										D88																													
D82										D83										D84										D85										D86										D87										D88										D89																													
D83										D84										D85										D86										D87										D88										D89										D90																													
D84										D85										D86										D87										D88										D89										D90										D91																													
D85										D86										D87										D88										D89										D90										D91										D92																													
D86										D87										D88										D89										D90										D91										D92										D93																													
D87										D88										D89										D90										D91										D92										D93										D94																													
D88										D89										D90										D91										D92										D93										D94										D95																													
D89										D90										D91										D92										D93										D94										D95										D96																													
D90										D91										D92										D93										D94										D95										D96										D97																													
D91										D92										D93										D94										D95										D96										D97										D98																													
D92										D93										D94										D95										D96										D97										D98										D99																													
D93										D94										D95										D96										D97										D98										D99										D100																													
D94										D95										D96										D97										D98										D99										D100										D101																													
D95										D96										D97										D98										D99										D100										D101										D102																													
D96										D97										D98										D99										D100										D101										D102										D103																													
D97										D98										D99										D100										D101										D102										D103										D104																													
D98										D99										D100										D101										D102										D103										D104										D105																													
D99										D100										D101										D102										D103										D104										D105										D106																													
D100										D101										D102										D103										D104										D105										D106										D107																													
D101										D102										D103										D104										D105										D106										D107										D108																													
D102										D103										D104										D105										D106										D107										D108										D109																													
D103										D104										D105										D106										D107										D108										D109										D110																													
D104										D105										D106										D107										D108										D109										D110										D111																													
D105										D106										D107										D108										D109										D110										D111										D112																													
D106										D107										D108										D109										D110										D111										D112										D113																													
D107										D108										D109										D110										D111										D112										D113										D114																													
D108										D109										D110										D111										D112										D113										D114										D115																													
D109										D110										D111										D112										D113										D114										D115										D116																													
D110										D111										D112										D113										D114										D115										D116										D117																													
D111										D112										D113										D114										D115										D116										D117										D118																													
D112										D113										D114										D115										D116										D117										D118										D119																													
D113										D114										D115										D116										D117										D118										D119										D120																													
D114										D115										D116										D117										D118										D119										D120										D121																													
D115										D116										D117										D118										D119										D120										D121										D122																													
D116										D117										D118										D119										D120										D121										D122										D123																													
D117										D118										D119										D120										D121										D122										D123										D124																													
D118										D119										D120										D121										D122										D123										D124										D125																													
D119										D120										D121										D122										D123										D124										D125										D126																													
D120										D121										D122										D123										D124										D125										D126										D127																													
D121										D122										D123										D124										D125										D126										D127										D128																													
D122										D123										D124										D125										D126										D127										D128										D129																													
D123										D124										D125										D126										D127										D128										D129										D130																													
D124										D125										D126										D127										D128										D129										D130										D131																													
D125										D126										D127										D128										D129										D130										D131										D132																													
D126										D127										D128										D129										D130										D131										D132										D133																													
D127										D128										D129										D130										D131										D132										D133										D134																													
D128										D129										D130										D131										D132										D133										D134										D135																													
D129										D130										D131										D132										D133										D134										D135										D136																													
D130										D131										D132										D133										D134										D135										D136										D137																													
D131										D132										D133										D134										D135										D136										D137										D138																													
D132										D133										D134										D135										D136										D137										D138										D139																													
D133										D134										D135										D136										D137										D138										D139										D140																													
D134										D135										D136										D137										D138										D139										D140										D141																													
D135										D136										D137										D138										D139										D140										D141										D142																													
D136										D137										D138										D139										D140										D141										D142										D143																													
D137										D138										D139										D140										D141										D142										D143										D144																													
D138										D139										D140										D141										D142										D143										D144										D145																													
D139										D140										D141										D142										D143										D144										D145										D146																													
D140										D141										D142										D143										D144										D145										D146										D147																													
D141										D142										D143										D144										D145										D146										D147										D148																													
D142										D143										D144										D145										D146										D147										D148										D149																													
D143										D144										D145										D146										D147										D148										D149										D150																													
D144										D145										D146										D147										D148										D149										D150										D151																													
D145										D146										D147										D148										D149										D150										D151										D152																													
D146										D147										D148										D149										D150										D151										D152										D153																													
D147										D148										D149										D150										D151										D152										D153										D154																													
D148										D149										D150										D151										D152										D153										D154										D155																													
D149										D150										D151										D152										D153										D154										D155										D156																													
D150										D151										D152										D153										D154										D155										D156										D157																													
D151										D152										D153										D154										D155										D156										D157										D158																													
D152										D153										D154										D155										D156										D157										D158										D159																													
D153										D154										D155										D156										D157										D158										D159										D160																													
D154										D155										D156										D157										D158										D159										D160										D161																													
D155										D156										D157										D158										D159										D160										D161										D162																													
D156										D157										D158										D159										D160										D161										D162										D163																													
D157										D158										D159										D160										D161										D162										D163										D164																													
D158										D159										D160										D161										D162										D163										D164										D165																													
D159										D160										D161										D162										D163										D164										D165										D166																													
D160										D161										D162										D163										D164										D165										D166										D167																													
D161										D162										D163										D164										D165										D166										D167										D168																													
D162										D163										D164										D165										D166										D167										D168										D169																													
D163										D164										D165										D166										D167										D168										D169										D170																													
D164										D165										D166										D167										D168										D169										D170										D171																													
D165										D166										D167										D168										D169										D170										D171										D172																													
D166										D167										D168										D169										D170										D171										D172										D173																													
D167										D168										D169										D170										D171										D172										D173										D174																													
D168										D169										D170										D171										D172										D173										D174										D175																													
D169										D170										D171										D172										D173										D174										D175										D176																													
D170										D171																																																																																									

4 Experimental information

Property	Value	Source
EM reconstruction method	SINGLE PARTICLE	Depositor
Imposed symmetry	POINT, C4	Depositor
Number of particles used	172225	Depositor
Resolution determination method	FSC 0.143 CUT-OFF	Depositor
CTF correction method	PHASE FLIPPING AND AMPLITUDE CORRECTION	Depositor
Microscope	FEI TITAN	Depositor
Voltage (kV)	300	Depositor
Electron dose ($e^-/\text{\AA}^2$)	60	Depositor
Minimum defocus (nm)	800	Depositor
Maximum defocus (nm)	3000	Depositor
Magnification	81000	Depositor
Image detector	GATAN K3 BIOQUANTUM (6k x 4k)	Depositor
Maximum map value	3.356	Depositor
Minimum map value	-2.290	Depositor
Average map value	0.008	Depositor
Map value standard deviation	0.072	Depositor
Recommended contour level	0.209	Depositor
Map size (Å)	276.48, 276.48, 276.48	wwPDB
Map dimensions	256, 256, 256	wwPDB
Map angles (°)	90.0, 90.0, 90.0	wwPDB
Pixel spacing (Å)	1.08, 1.08, 1.08	Depositor

5 Model quality [i](#)

5.1 Standard geometry [i](#)

Bond lengths and bond angles in the following residue types are not validated in this section: MG, GDP

The Z score for a bond length (or angle) is the number of standard deviations the observed value is removed from the expected value. A bond length (or angle) with $|Z| > 5$ is considered an outlier worth inspection. RMSZ is the root-mean-square of all Z scores of the bond lengths (or angles).

Mol	Chain	Bond lengths		Bond angles	
		RMSZ	# $ Z > 5$	RMSZ	# $ Z > 5$
1	A	0.26	0/4158	0.46	0/5683
1	B	0.26	0/4158	0.46	0/5683
1	C	0.27	0/4158	0.46	0/5683
1	D	0.27	0/4158	0.46	0/5683
2	E	0.26	0/1370	0.48	0/1872
2	F	0.26	0/1370	0.48	0/1872
2	G	0.26	0/1370	0.48	0/1872
2	H	0.26	0/1370	0.48	0/1872
All	All	0.26	0/22112	0.47	0/30220

There are no bond length outliers.

There are no bond angle outliers.

There are no chirality outliers.

There are no planarity outliers.

5.2 Too-close contacts [i](#)

In the following table, the Non-H and H(model) columns list the number of non-hydrogen atoms and hydrogen atoms in the chain respectively. The H(added) column lists the number of hydrogen atoms added and optimized by MolProbity. The Clashes column lists the number of clashes within the asymmetric unit, whereas Symm-Clashes lists symmetry-related clashes.

Mol	Chain	Non-H	H(model)	H(added)	Clashes	Symm-Clashes
1	A	4081	3595	3592	30	0
1	B	4081	3595	3592	30	0
1	C	4081	3595	3592	30	0
1	D	4081	3595	3592	30	0
2	E	1343	1233	1233	8	0

Continued on next page...

Continued from previous page...

Mol	Chain	Non-H	H(model)	H(added)	Clashes	Symm-Clashes
2	F	1343	1233	1233	8	0
2	G	1343	1233	1233	9	0
2	H	1343	1233	1233	10	0
3	E	1	0	0	0	0
3	F	1	0	0	0	0
3	G	1	0	0	0	0
3	H	1	0	0	0	0
4	E	28	12	12	0	0
4	F	28	12	12	0	0
4	G	28	12	12	0	0
4	H	28	12	12	0	0
All	All	21812	19360	19348	147	0

The all-atom clashscore is defined as the number of clashes found per 1000 atoms (including hydrogen atoms). The all-atom clashscore for this structure is 4.

The worst 5 of 147 close contacts within the same asymmetric unit are listed below, sorted by their clash magnitude.

Atom-1	Atom-2	Interatomic distance (Å)	Clash overlap (Å)
1:C:390:ILE:HG23	1:C:391:ARG:HG3	1.74	0.69
1:A:390:ILE:HG23	1:A:391:ARG:HG3	1.74	0.69
1:D:390:ILE:HG23	1:D:391:ARG:HG3	1.74	0.68
1:B:390:ILE:HG23	1:B:391:ARG:HG3	1.74	0.67
2:G:76:ASP:OD2	1:D:269:ARG:NE	2.29	0.64

There are no symmetry-related clashes.

5.3 Torsion angles [i](#)

5.3.1 Protein backbone [i](#)

In the following table, the Percentiles column shows the percent Ramachandran outliers of the chain as a percentile score with respect to all PDB entries followed by that with respect to all EM entries.

The Analysed column shows the number of residues for which the backbone conformation was analysed, and the total number of residues.

Mol	Chain	Analysed	Favoured	Allowed	Outliers	Percentiles
1	A	575/901 (64%)	567 (99%)	8 (1%)	0	100 100

Continued on next page...

Continued from previous page...

Mol	Chain	Analysed	Favoured	Allowed	Outliers	Percentiles	
1	B	575/901 (64%)	567 (99%)	8 (1%)	0	100	100
1	C	575/901 (64%)	567 (99%)	8 (1%)	0	100	100
1	D	575/901 (64%)	567 (99%)	8 (1%)	0	100	100
2	E	188/193 (97%)	184 (98%)	4 (2%)	0	100	100
2	F	188/193 (97%)	184 (98%)	4 (2%)	0	100	100
2	G	188/193 (97%)	184 (98%)	4 (2%)	0	100	100
2	H	188/193 (97%)	184 (98%)	4 (2%)	0	100	100
All	All	3052/4376 (70%)	3004 (98%)	48 (2%)	0	100	100

There are no Ramachandran outliers to report.

5.3.2 Protein sidechains ⓘ

In the following table, the Percentiles column shows the percent sidechain outliers of the chain as a percentile score with respect to all PDB entries followed by that with respect to all EM entries.

The Analysed column shows the number of residues for which the sidechain conformation was analysed, and the total number of residues.

Mol	Chain	Analysed	Rotameric	Outliers	Percentiles	
1	A	342/789 (43%)	340 (99%)	2 (1%)	86	93
1	B	342/789 (43%)	340 (99%)	2 (1%)	86	93
1	C	342/789 (43%)	340 (99%)	2 (1%)	86	93
1	D	342/789 (43%)	340 (99%)	2 (1%)	86	93
2	E	122/167 (73%)	122 (100%)	0	100	100
2	F	122/167 (73%)	122 (100%)	0	100	100
2	G	122/167 (73%)	122 (100%)	0	100	100
2	H	122/167 (73%)	122 (100%)	0	100	100
All	All	1856/3824 (48%)	1848 (100%)	8 (0%)	91	95

5 of 8 residues with a non-rotameric sidechain are listed below:

Mol	Chain	Res	Type
1	D	341	PHE
1	D	249	ARG

Continued on next page...

Continued from previous page...

Mol	Chain	Res	Type
1	C	249	ARG
1	B	341	PHE
1	C	341	PHE

Sometimes sidechains can be flipped to improve hydrogen bonding and reduce clashes. There are no such sidechains identified.

5.3.3 RNA [i](#)

There are no RNA molecules in this entry.

5.4 Non-standard residues in protein, DNA, RNA chains [i](#)

There are no non-standard protein/DNA/RNA residues in this entry.

5.5 Carbohydrates [i](#)

There are no monosaccharides in this entry.

5.6 Ligand geometry [i](#)

Of 8 ligands modelled in this entry, 4 are monoatomic - leaving 4 for Mogul analysis.

In the following table, the Counts columns list the number of bonds (or angles) for which Mogul statistics could be retrieved, the number of bonds (or angles) that are observed in the model and the number of bonds (or angles) that are defined in the Chemical Component Dictionary. The Link column lists molecule types, if any, to which the group is linked. The Z score for a bond length (or angle) is the number of standard deviations the observed value is removed from the expected value. A bond length (or angle) with $|Z| > 2$ is considered an outlier worth inspection. RMSZ is the root-mean-square of all Z scores of the bond lengths (or angles).

Mol	Type	Chain	Res	Link	Bond lengths			Bond angles		
					Counts	RMSZ	$\# Z > 2$	Counts	RMSZ	$\# Z > 2$
4	GDP	H	302	3	24,30,30	0.98	1 (4%)	30,47,47	1.37	4 (13%)
4	GDP	G	302	3	24,30,30	0.98	1 (4%)	30,47,47	1.37	4 (13%)
4	GDP	F	302	3	24,30,30	0.99	2 (8%)	30,47,47	1.37	4 (13%)
4	GDP	E	302	3	24,30,30	0.99	1 (4%)	30,47,47	1.37	4 (13%)

In the following table, the Chirals column lists the number of chiral outliers, the number of chiral

centers analysed, the number of these observed in the model and the number defined in the Chemical Component Dictionary. Similar counts are reported in the Torsion and Rings columns. '-' means no outliers of that kind were identified.

Mol	Type	Chain	Res	Link	Chirals	Torsions	Rings
4	GDP	H	302	3	-	5/12/32/32	0/3/3/3
4	GDP	G	302	3	-	5/12/32/32	0/3/3/3
4	GDP	F	302	3	-	5/12/32/32	0/3/3/3
4	GDP	E	302	3	-	5/12/32/32	0/3/3/3

All (5) bond length outliers are listed below:

Mol	Chain	Res	Type	Atoms	Z	Observed(Å)	Ideal(Å)
4	G	302	GDP	C6-N1	-2.29	1.34	1.37
4	F	302	GDP	C6-N1	-2.26	1.34	1.37
4	E	302	GDP	C6-N1	-2.26	1.34	1.37
4	H	302	GDP	C6-N1	-2.23	1.34	1.37
4	F	302	GDP	O4'-C1'	2.00	1.43	1.41

The worst 5 of 16 bond angle outliers are listed below:

Mol	Chain	Res	Type	Atoms	Z	Observed(°)	Ideal(°)
4	H	302	GDP	PA-O3A-PB	-4.01	119.08	132.83
4	F	302	GDP	PA-O3A-PB	-4.00	119.09	132.83
4	G	302	GDP	PA-O3A-PB	-4.00	119.09	132.83
4	E	302	GDP	PA-O3A-PB	-4.00	119.10	132.83
4	E	302	GDP	C8-N7-C5	2.56	107.86	102.99

There are no chirality outliers.

5 of 20 torsion outliers are listed below:

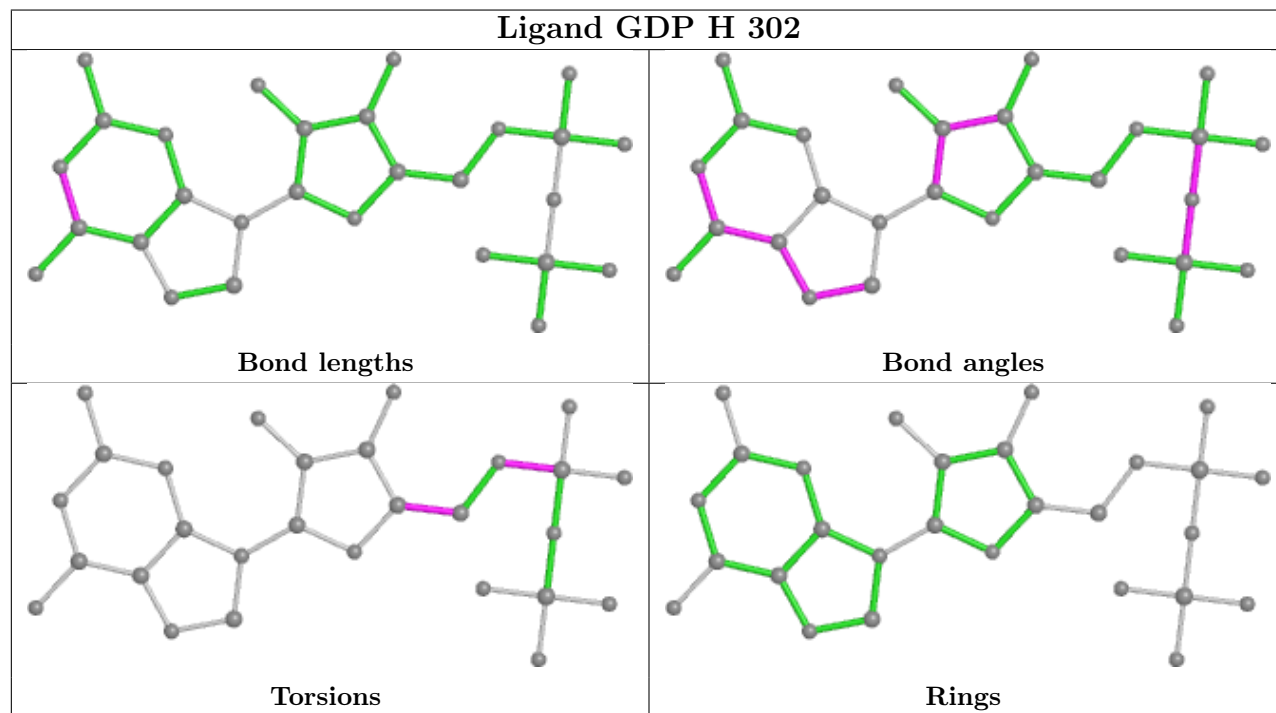
Mol	Chain	Res	Type	Atoms
4	E	302	GDP	C5'-O5'-PA-O1A
4	E	302	GDP	C5'-O5'-PA-O2A
4	F	302	GDP	C5'-O5'-PA-O1A
4	F	302	GDP	C5'-O5'-PA-O2A
4	G	302	GDP	C5'-O5'-PA-O1A

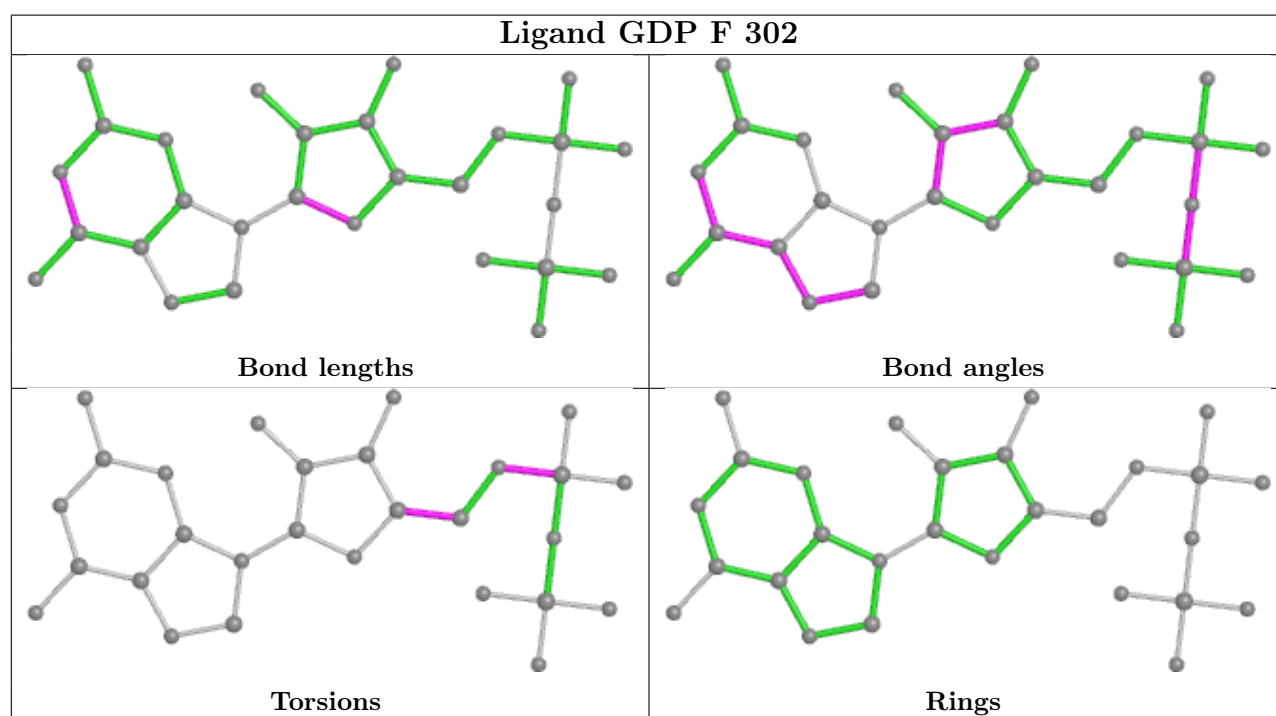
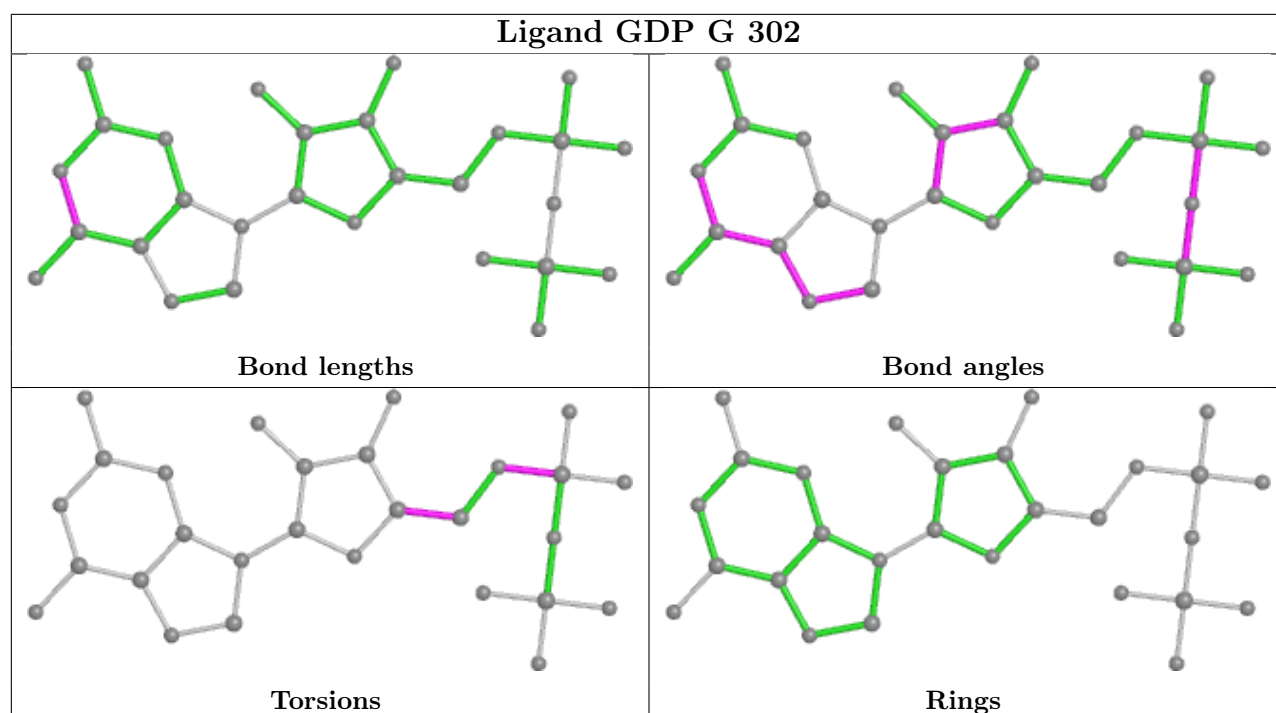
There are no ring outliers.

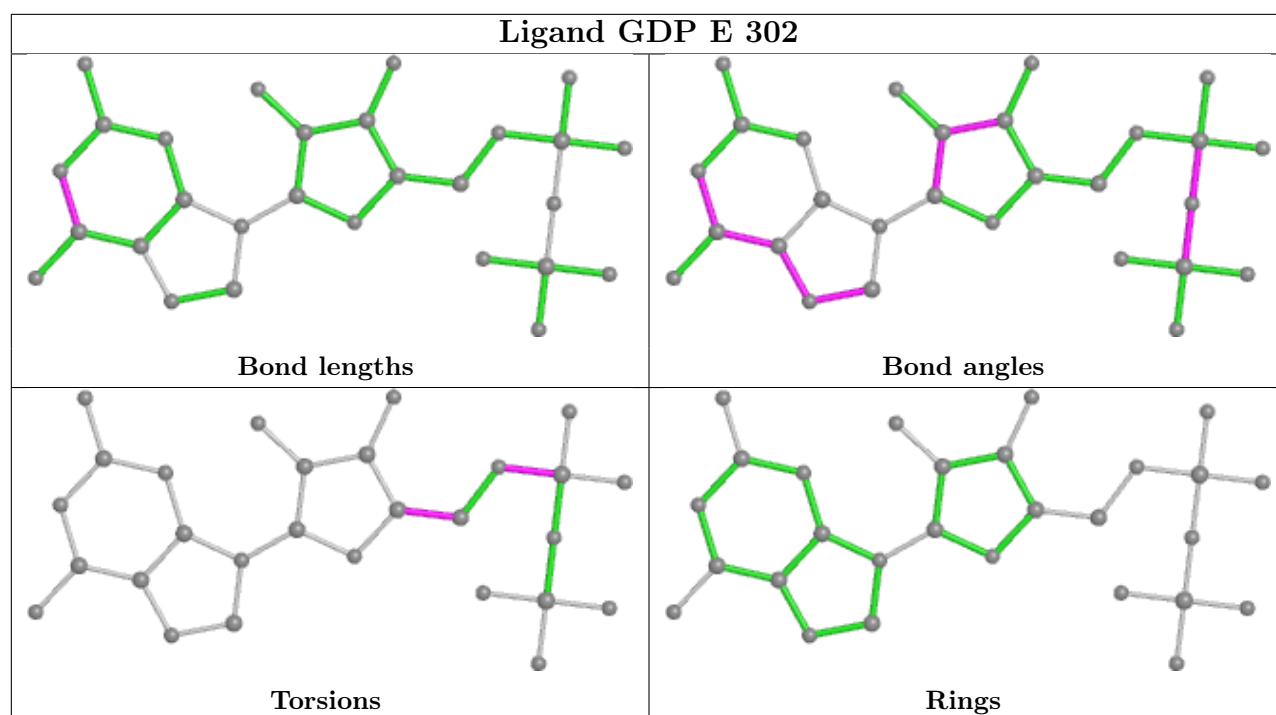
No monomer is involved in short contacts.

The following is a two-dimensional graphical depiction of Mogul quality analysis of bond lengths, bond angles, torsion angles, and ring geometry for all instances of the Ligand of Interest. In

addition, ligands with molecular weight > 250 and outliers as shown on the validation Tables will also be included. For torsion angles, if less than 5% of the Mogul distribution of torsion angles is within 10 degrees of the torsion angle in question, then that torsion angle is considered an outlier. Any bond that is central to one or more torsion angles identified as an outlier by Mogul will be highlighted in the graph. For rings, the root-mean-square deviation (RMSD) between the ring in question and similar rings identified by Mogul is calculated over all ring torsion angles. If the average RMSD is greater than 60 degrees and the minimal RMSD between the ring in question and any Mogul-identified rings is also greater than 60 degrees, then that ring is considered an outlier. The outliers are highlighted in purple. The color gray indicates Mogul did not find sufficient equivalents in the CSD to analyse the geometry.







5.7 Other polymers [i](#)

There are no such residues in this entry.

5.8 Polymer linkage issues [i](#)

There are no chain breaks in this entry.

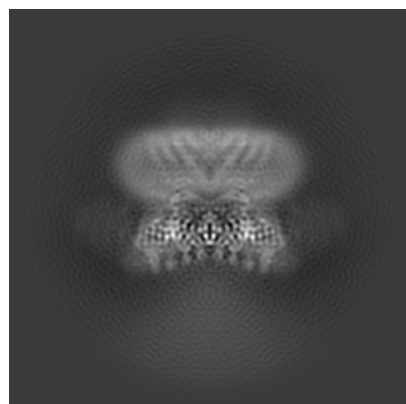
6 Map visualisation [i](#)

This section contains visualisations of the EMDB entry EMD-28977. These allow visual inspection of the internal detail of the map and identification of artifacts.

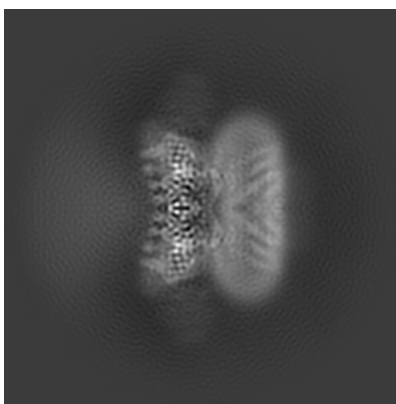
Images derived from a raw map, generated by summing the deposited half-maps, are presented below the corresponding image components of the primary map to allow further visual inspection and comparison with those of the primary map.

6.1 Orthogonal projections [i](#)

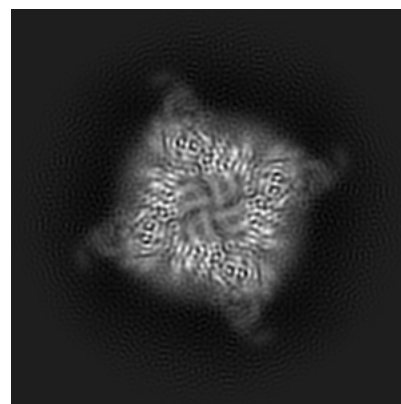
6.1.1 Primary map



X

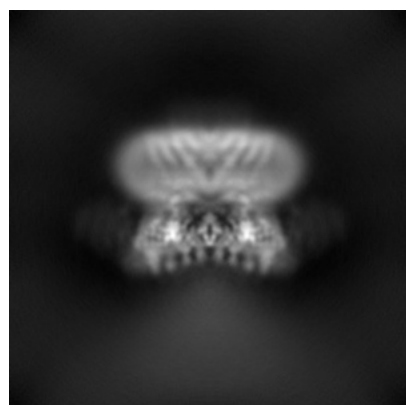


Y

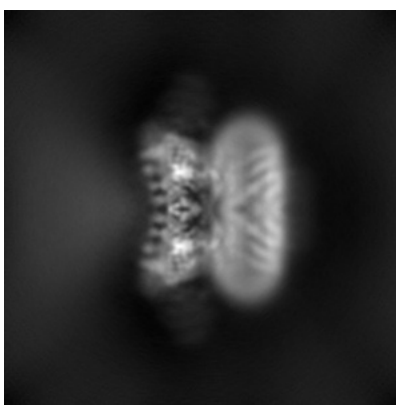


Z

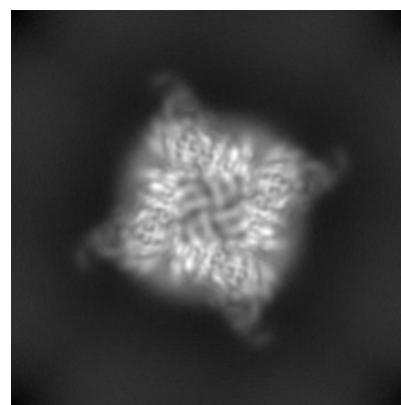
6.1.2 Raw map



X



Y

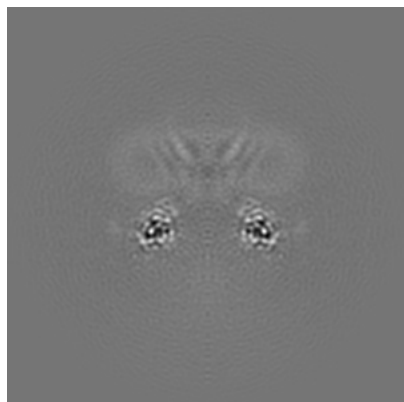


Z

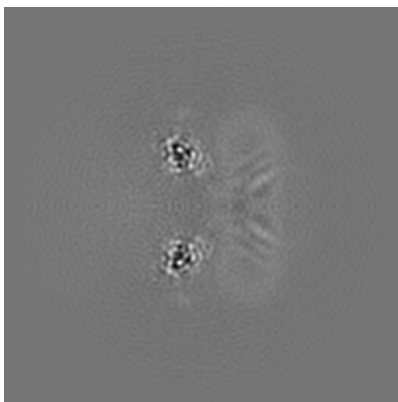
The images above show the map projected in three orthogonal directions.

6.2 Central slices [i](#)

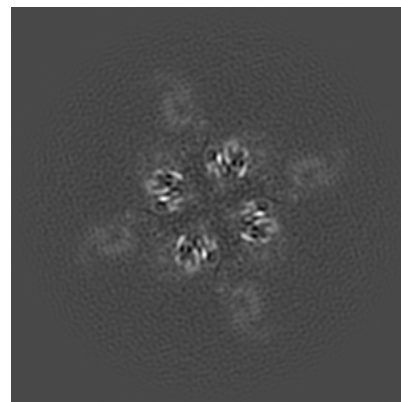
6.2.1 Primary map



X Index: 128

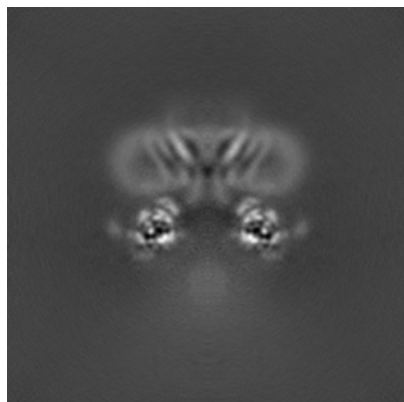


Y Index: 128

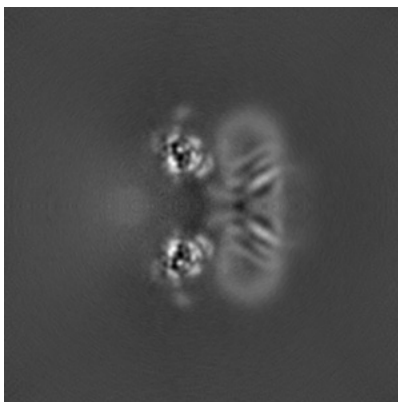


Z Index: 128

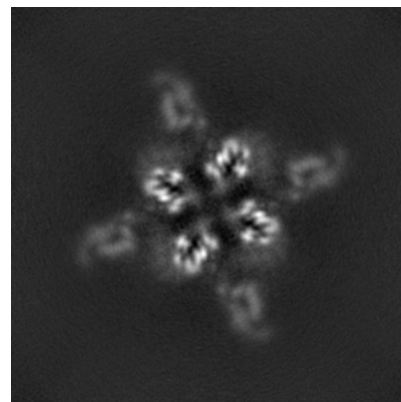
6.2.2 Raw map



X Index: 128



Y Index: 128

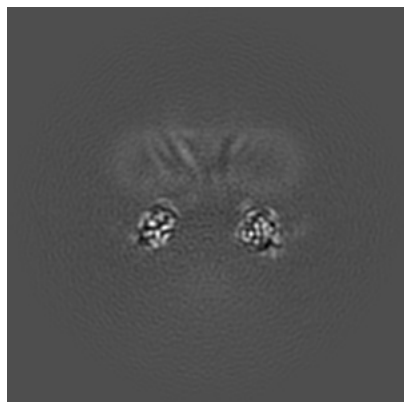


Z Index: 128

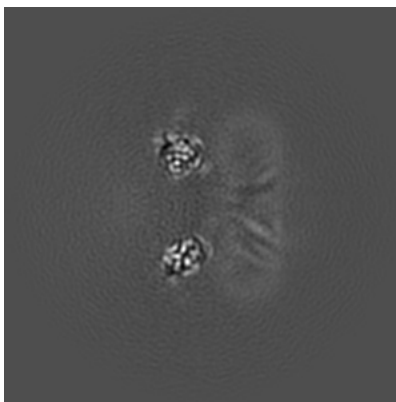
The images above show central slices of the map in three orthogonal directions.

6.3 Largest variance slices [i](#)

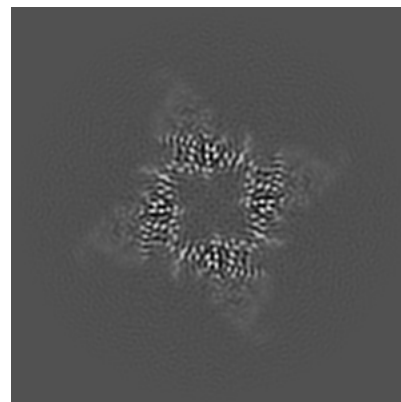
6.3.1 Primary map



X Index: 126

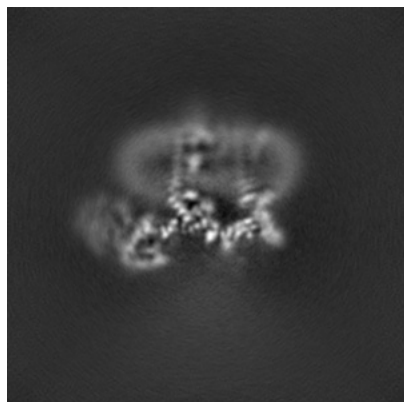


Y Index: 130

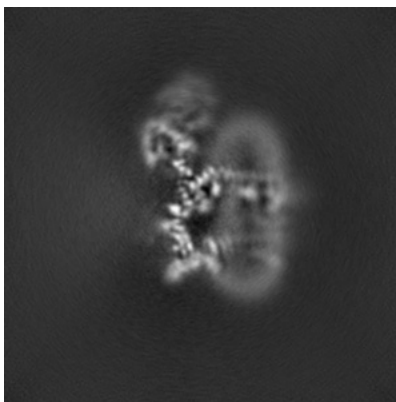


Z Index: 111

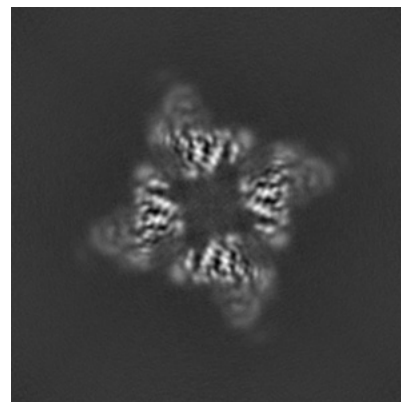
6.3.2 Raw map



X Index: 151



Y Index: 151

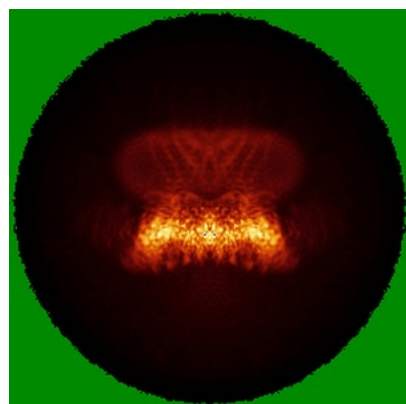


Z Index: 106

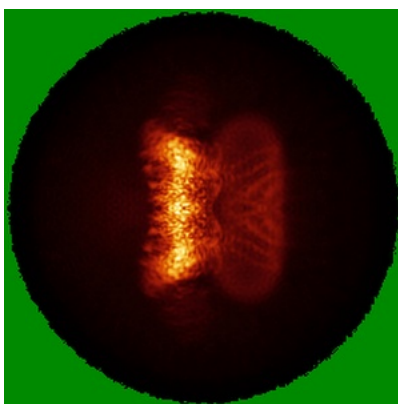
The images above show the largest variance slices of the map in three orthogonal directions.

6.4 Orthogonal standard-deviation projections (False-color) ⓘ

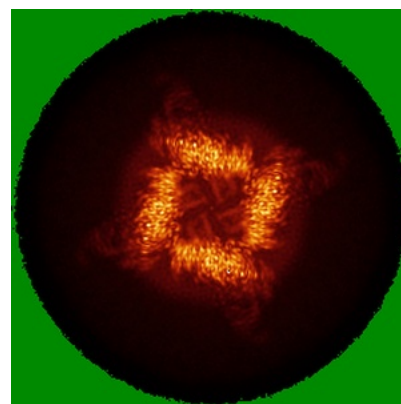
6.4.1 Primary map



X

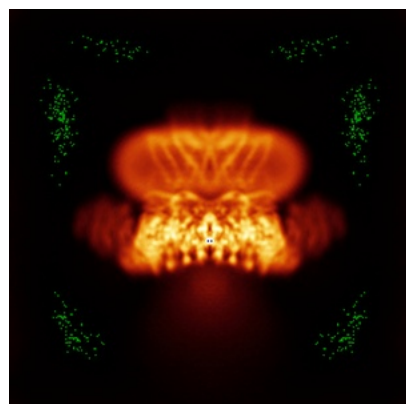


Y

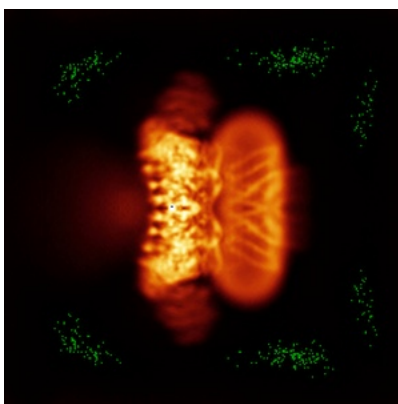


Z

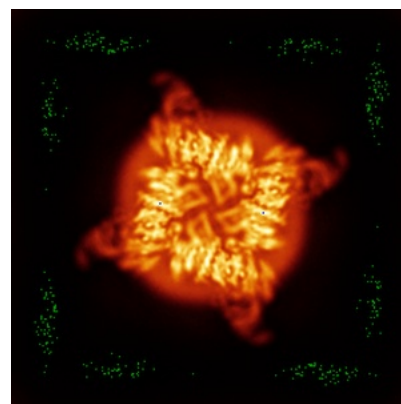
6.4.2 Raw map



X



Y

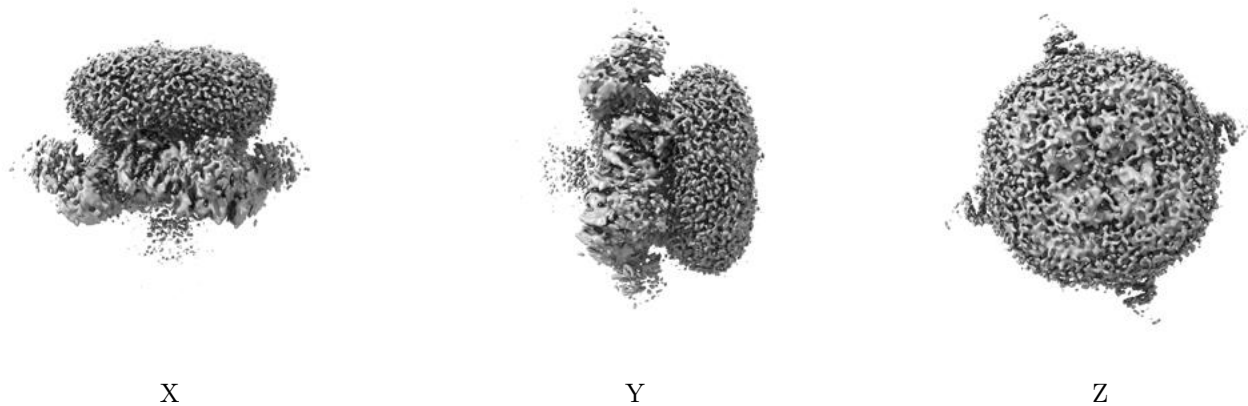


Z

The images above show the map standard deviation projections with false color in three orthogonal directions. Minimum values are shown in green, max in blue, and dark to light orange shades represent small to large values respectively.

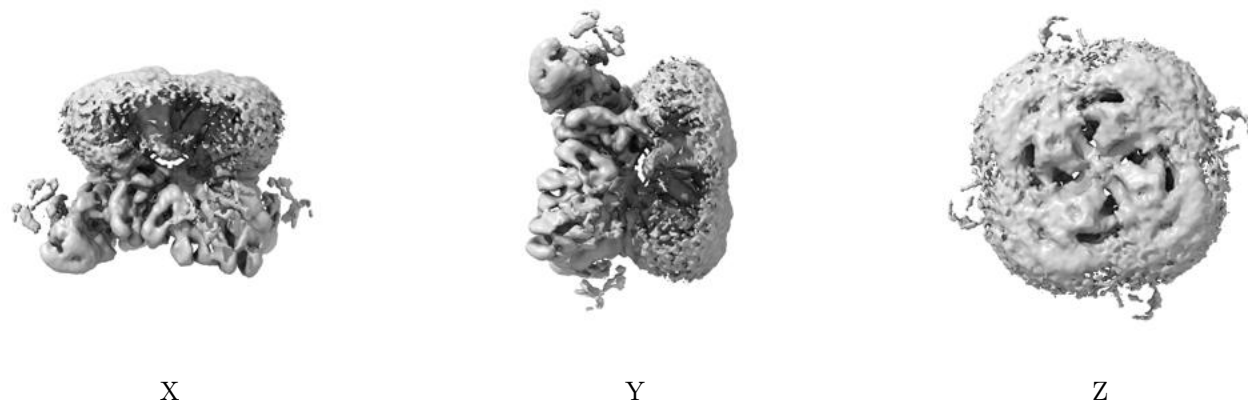
6.5 Orthogonal surface views [i](#)

6.5.1 Primary map



The images above show the 3D surface view of the map at the recommended contour level 0.209. These images, in conjunction with the slice images, may facilitate assessment of whether an appropriate contour level has been provided.

6.5.2 Raw map



These images show the 3D surface of the raw map. The raw map's contour level was selected so that its surface encloses the same volume as the primary map does at its recommended contour level.

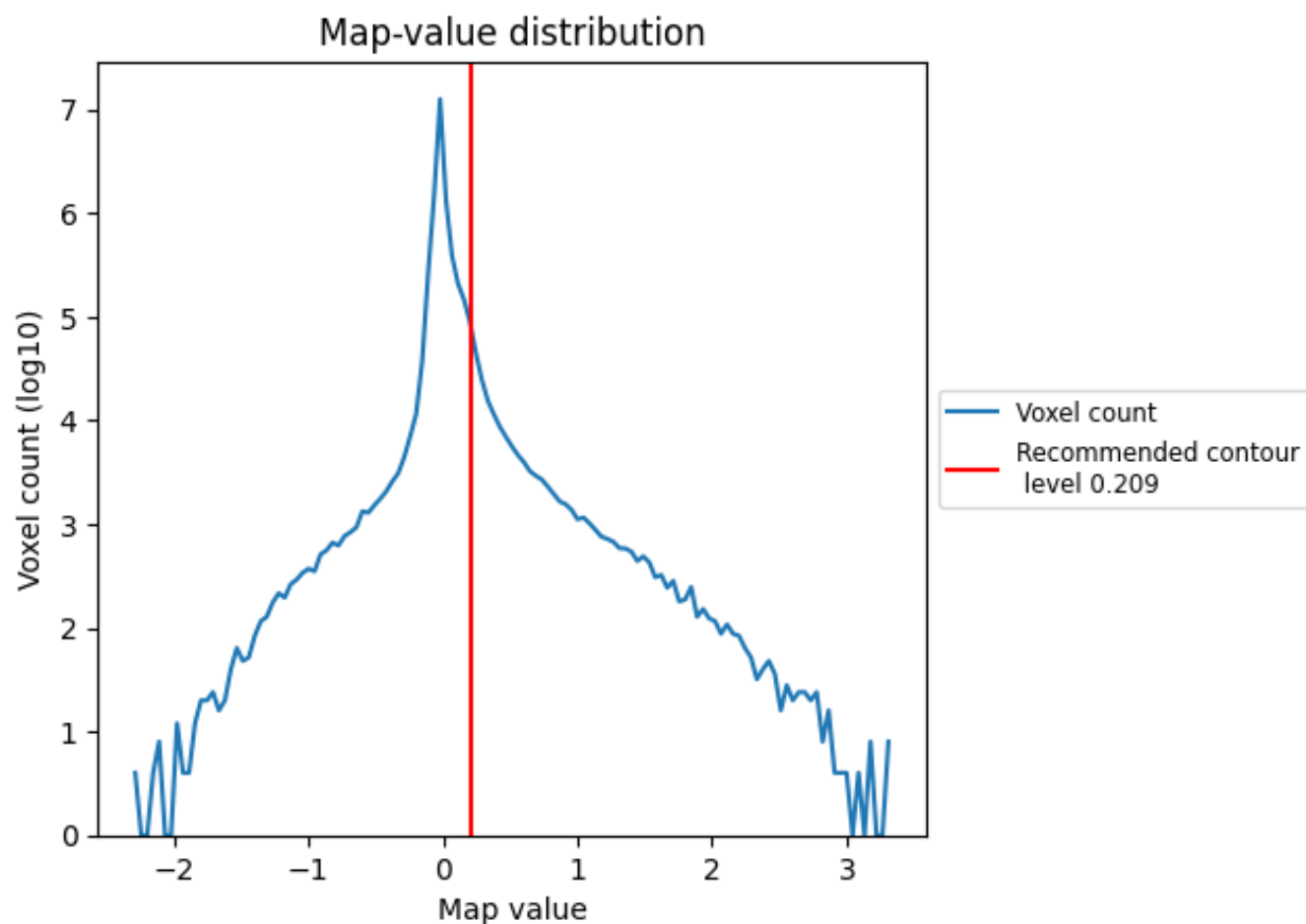
6.6 Mask visualisation [i](#)

This section was not generated. No masks/segmentation were deposited.

7 Map analysis [i](#)

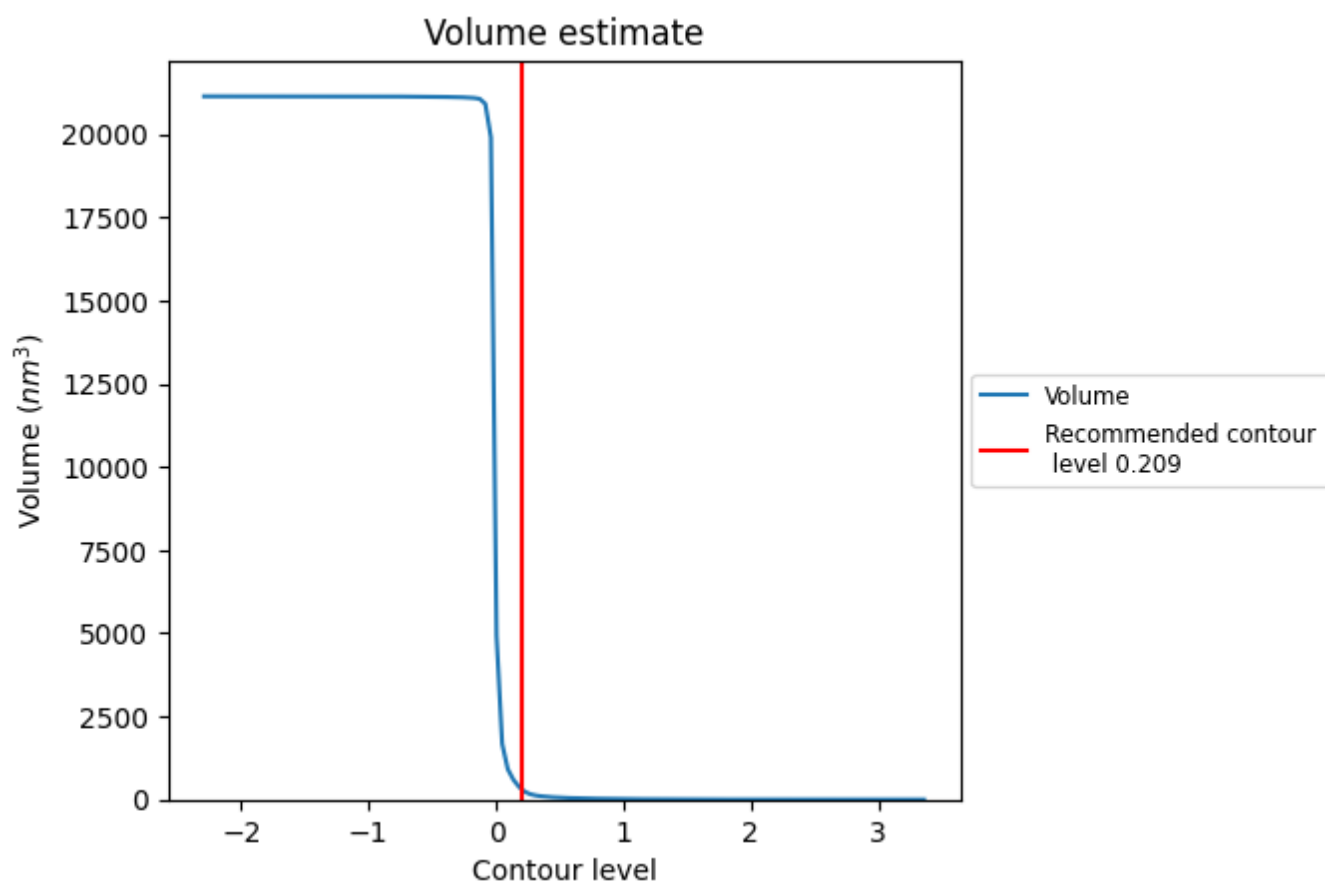
This section contains the results of statistical analysis of the map.

7.1 Map-value distribution [i](#)



The map-value distribution is plotted in 128 intervals along the x-axis. The y-axis is logarithmic. A spike in this graph at zero usually indicates that the volume has been masked.

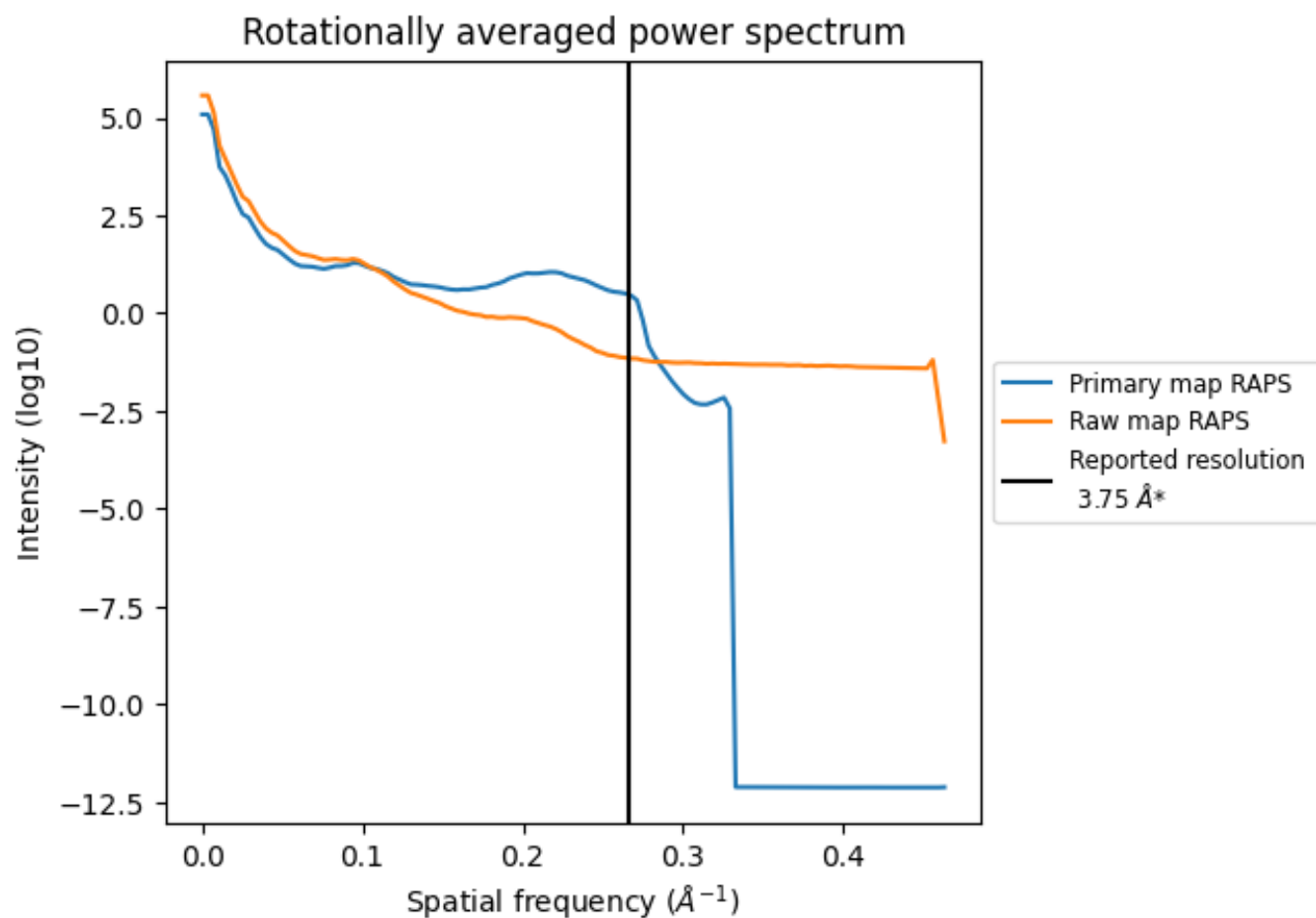
7.2 Volume estimate [i](#)



The volume at the recommended contour level is 287 nm^3 ; this corresponds to an approximate mass of 259 kDa.

The volume estimate graph shows how the enclosed volume varies with the contour level. The recommended contour level is shown as a vertical line and the intersection between the line and the curve gives the volume of the enclosed surface at the given level.

7.3 Rotationally averaged power spectrum ⓘ

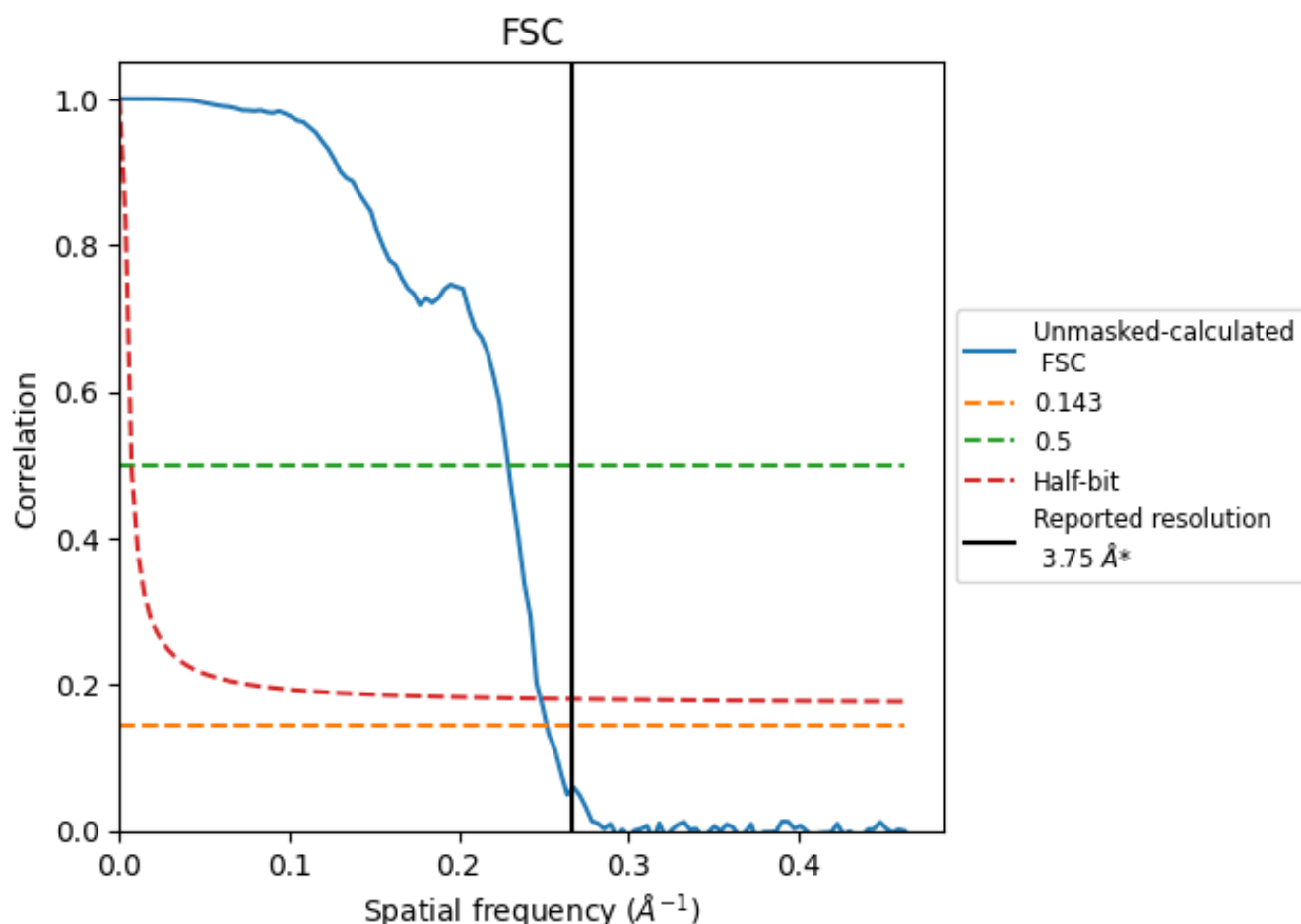


*Reported resolution corresponds to spatial frequency of 0.267 Å⁻¹

8 Fourier-Shell correlation [i](#)

Fourier-Shell Correlation (FSC) is the most commonly used method to estimate the resolution of single-particle and subtomogram-averaged maps. The shape of the curve depends on the imposed symmetry, mask and whether or not the two 3D reconstructions used were processed from a common reference. The reported resolution is shown as a black line. A curve is displayed for the half-bit criterion in addition to lines showing the 0.143 gold standard cut-off and 0.5 cut-off.

8.1 FSC [i](#)



*Reported resolution corresponds to spatial frequency of 0.267 Å⁻¹

8.2 Resolution estimates [i](#)

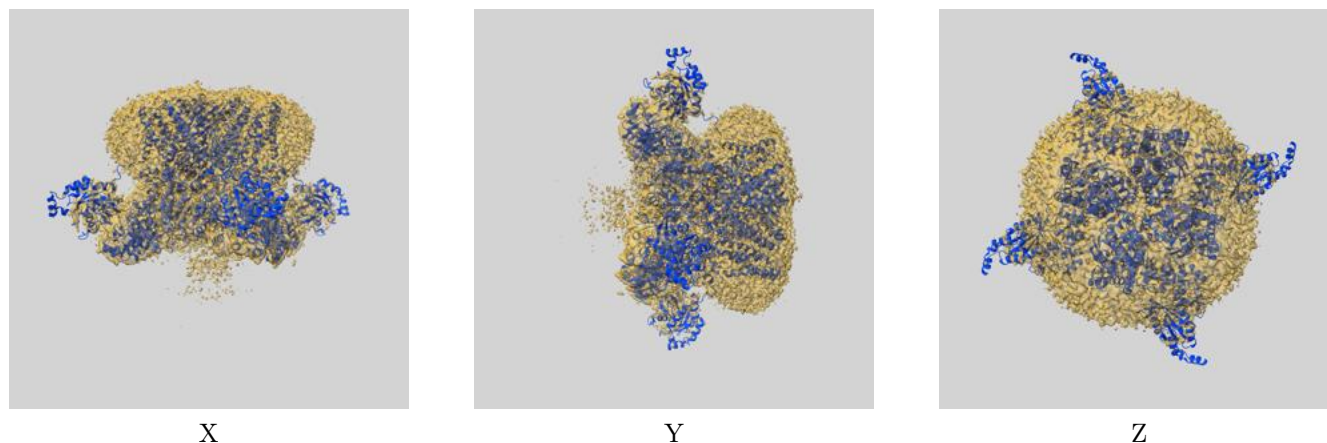
Resolution estimate (Å)	Estimation criterion (FSC cut-off)		
	0.143	0.5	Half-bit
Reported by author	3.75	-	-
Author-provided FSC curve	-	-	-
Unmasked-calculated*	3.97	4.36	4.03

*Resolution estimate based on FSC curve calculated by comparison of deposited half-maps.

9 Map-model fit [i](#)

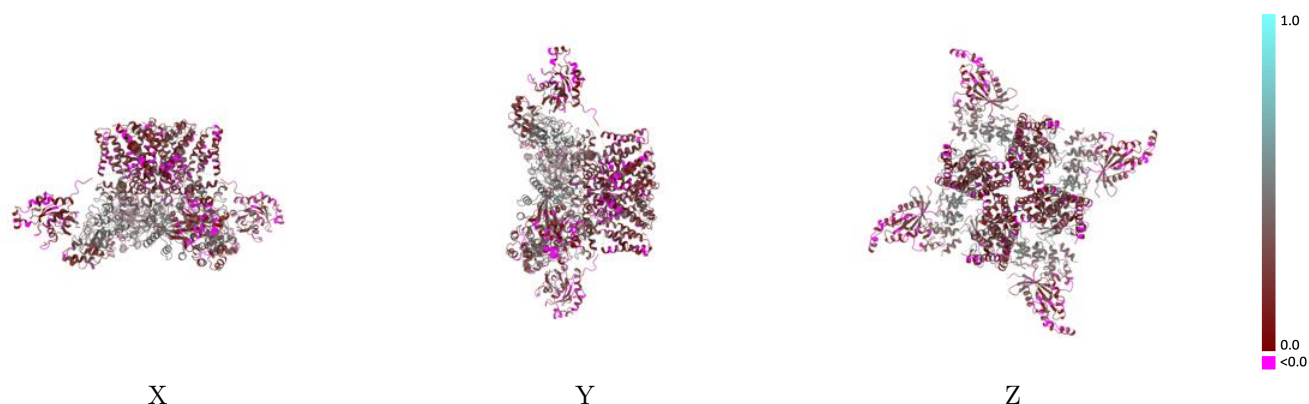
This section contains information regarding the fit between EMDB map EMD-28977 and PDB model 8FC9. Per-residue inclusion information can be found in section [3](#) on page [8](#).

9.1 Map-model overlay [i](#)



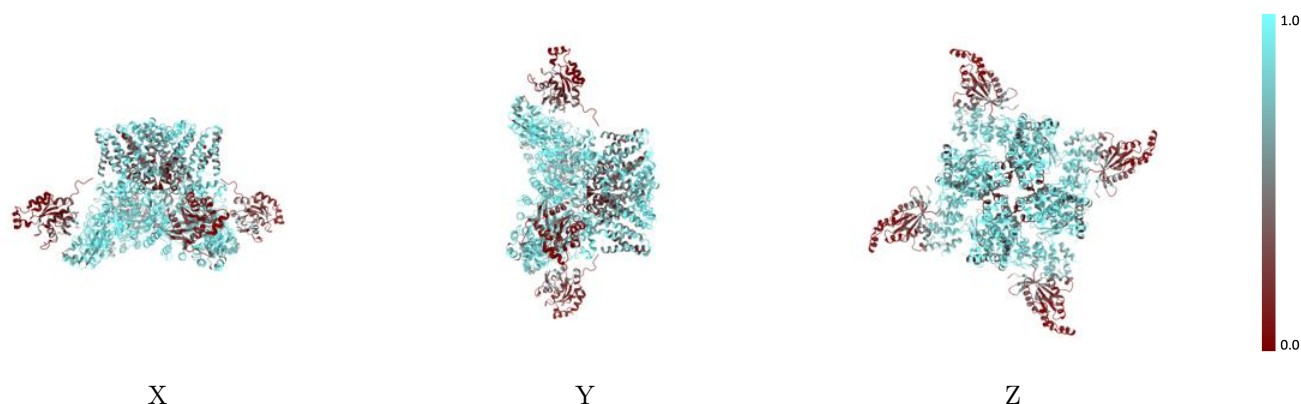
The images above show the 3D surface view of the map at the recommended contour level 0.209 at 50% transparency in yellow overlaid with a ribbon representation of the model coloured in blue. These images allow for the visual assessment of the quality of fit between the atomic model and the map.

9.2 Q-score mapped to coordinate model [i](#)



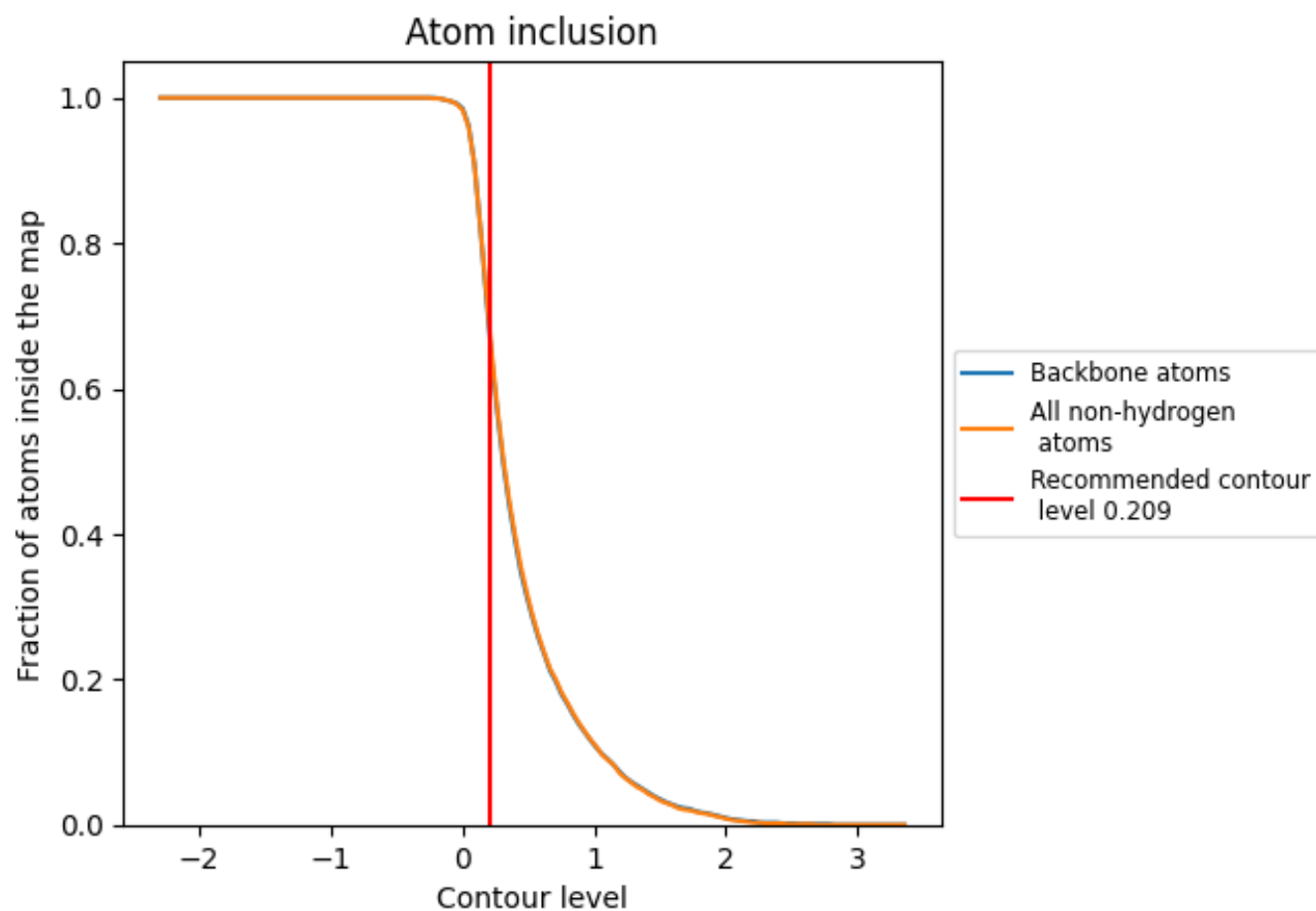
The images above show the model with each residue coloured according to its Q-score. This shows their resolvability in the map with higher Q-score values reflecting better resolvability. Please note: Q-score is calculating the resolvability of atoms, and thus high values are only expected at resolutions at which atoms can be resolved. Low Q-score values may therefore be expected for many entries.

9.3 Atom inclusion mapped to coordinate model [i](#)



The images above show the model with each residue coloured according to its atom inclusion. This shows to what extent they are inside the map at the recommended contour level (0.209).

9.4 Atom inclusion [i](#)



At the recommended contour level, 67% of all backbone atoms, 68% of all non-hydrogen atoms, are inside the map.

9.5 Map-model fit summary ⓘ

The table lists the average atom inclusion at the recommended contour level (0.209) and Q-score for the entire model and for each chain.

Chain	Atom inclusion	Q-score
All	<div></div> 0.6770	<div></div> 0.2820
A	<div></div> 0.8370	<div></div> 0.3290
B	<div></div> 0.8420	<div></div> 0.3320
C	<div></div> 0.8380	<div></div> 0.3270
D	<div></div> 0.8360	<div></div> 0.3280
E	<div></div> 0.2260	<div></div> 0.1420
F	<div></div> 0.2310	<div></div> 0.1490
G	<div></div> 0.2220	<div></div> 0.1390
H	<div></div> 0.2310	<div></div> 0.1450

