



# Full wwPDB X-ray Structure Validation Report ⓘ

Jan 15, 2025 – 09:25 am GMT

PDB ID : 9FAE  
Title : Human adenovirus type 36 fiber knob in complex with 4-O-acetyl-3'-sialyllactose  
Authors : Strebl, M.; Liaci, A.M.; Pfenning, V.; Stehle, T.  
Deposited on : 2024-05-10  
Resolution : 1.57 Å(reported)

This is a Full wwPDB X-ray Structure Validation Report for a publicly released PDB entry.

We welcome your comments at [validation@mail.wwpdb.org](mailto:validation@mail.wwpdb.org)

A user guide is available at

<https://www.wwpdb.org/validation/2017/XrayValidationReportHelp>

with specific help available everywhere you see the ⓘ symbol.

The types of validation reports are described at

<http://www.wwpdb.org/validation/2017/FAQs#types>.

---

The following versions of software and data (see [references ⓘ](#)) were used in the production of this report:

MolProbity	:	4.02b-467
Mogul	:	1.8.4, CSD as541be (2020)
Xtriage (Phenix)	:	1.13
EDS	:	3.0
buster-report	:	1.1.7 (2018)
Percentile statistics	:	20231227.v01 (using entries in the PDB archive December 27th 2023)
CCP4	:	9.0.003 (Gargrove)
Density-Fitness	:	1.0.11
Ideal geometry (proteins)	:	Engh & Huber (2001)
Ideal geometry (DNA, RNA)	:	Parkinson et al. (1996)
Validation Pipeline (wwPDB-VP)	:	2.40

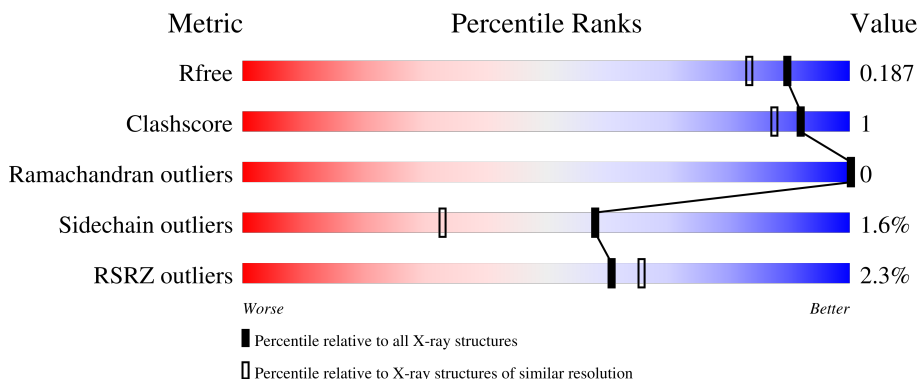
# 1 Overall quality at a glance

The following experimental techniques were used to determine the structure:

*X-RAY DIFFRACTION*

The reported resolution of this entry is 1.57 Å.

Percentile scores (ranging between 0-100) for global validation metrics of the entry are shown in the following graphic. The table shows the number of entries on which the scores are based.



Metric	Whole archive (#Entries)	Similar resolution (#Entries, resolution range(Å))
$R_{free}$	164625	7165 (1.60-1.56)
Clashscore	180529	1026 (1.58-1.58)
Ramachandran outliers	177936	1005 (1.58-1.58)
Sidechain outliers	177891	1004 (1.58-1.58)
RSRZ outliers	164620	7163 (1.60-1.56)

The table below summarises the geometric issues observed across the polymeric chains and their fit to the electron density. The red, orange, yellow and green segments of the lower bar indicate the fraction of residues that contain outliers for  $\geq 3$ , 2, 1 and 0 types of geometric quality criteria respectively. A grey segment represents the fraction of residues that are not modelled. The numeric value for each fraction is indicated below the corresponding segment, with a dot representing fractions  $\leq 5\%$ . The upper red bar (where present) indicates the fraction of residues that have poor fit to the electron density. The numeric value is given above the bar.

Mol	Chain	Length	Quality of chain
1	A	371	
1	B	371	
1	C	371	
2	D	2	

## 2 Entry composition [i](#)

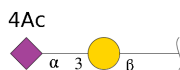
There are 4 unique types of molecules in this entry. The entry contains 4942 atoms, of which 0 are hydrogens and 0 are deuteriums.

In the tables below, the ZeroOcc column contains the number of atoms modelled with zero occupancy, the AltConf column contains the number of residues with at least one atom in alternate conformation and the Trace column contains the number of residues modelled with at most 2 atoms.

- Molecule 1 is a protein called Fiber.

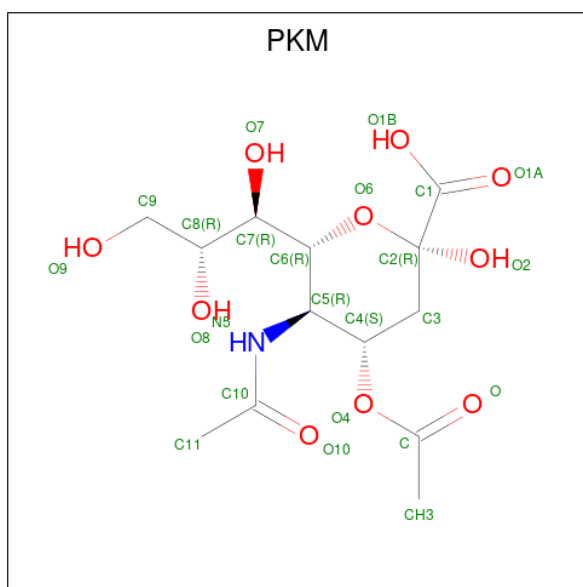
Mol	Chain	Residues	Atoms					ZeroOcc	AltConf	Trace
1	A	182	Total	C	N	O	S	0	4	0
			1435	921	222	288	4			
1	B	189	Total	C	N	O	S	0	5	0
			1505	960	239	302	4			
1	C	188	Total	C	N	O	S	0	2	0
			1456	932	231	289	4			

- Molecule 2 is an oligosaccharide called 4-O-acetyl-5-acetamido-3,5-dideoxy-D-glycero-alpha-D-galacto-non-2-ulopyranosonic acid-(2-3)-beta-D-galactopyranose.



Mol	Chain	Residues	Atoms				ZeroOcc	AltConf	Trace
2	D	2	Total	C	N	O	0	0	0
			35	19	1	15			

- Molecule 3 is 4-O-acetyl-5-acetamido-3,5-dideoxy-D-glycero-alpha-D-galacto-non-2-ulopyranosonic acid (three-letter code: PKM) (formula: C<sub>13</sub>H<sub>21</sub>NO<sub>10</sub>) (labeled as "Ligand of Interest" by depositor).



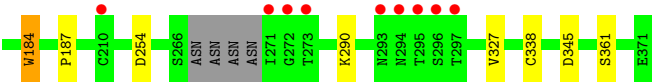
Mol	Chain	Residues	Atoms				ZeroOcc	AltConf
3	A	1	Total 24	C 13	N 1	O 10	0	0
3	C	1	Total 24	C 13	N 1	O 10	0	0

- Molecule 4 is water.

Mol	Chain	Residues	Atoms	ZeroOcc	AltConf
4	A	152	Total O 152 152	0	0
4	B	142	Total O 142 142	0	0
4	C	169	Total O 169 169	0	0



THR LYS GLU ASN THR SER LEU PRO SER SER VAL GLY THR LEU VAL VAL THR GLY LYS GLY ILE GLY THR GLY SER SER ALA HIS GLY THR ILE ASP VAL ARG LEU GLY GLU GLY GLY LEU SER PHE ASP GLU LYS GLY ASP LEU VAL ALA TRP ASP LYS ASN ASP T180



● Molecule 2: 4-O-acetyl-5-acetamido-3,5-dideoxy-D-glycero-alpha-D-galacto-non-2-ulopyranosonic acid-(2-3)-beta-D-galactopyranose

Chain D: 100%

GAL1  
PKG2

## 4 Data and refinement statistics

Property	Value	Source
Space group	P 21 21 21	Depositor
Cell constants a, b, c, $\alpha$ , $\beta$ , $\gamma$	51.13Å 98.64Å 99.83Å 90.00° 90.00° 90.00°	Depositor
Resolution (Å)	45.51 – 1.57 45.51 – 1.57	Depositor EDS
% Data completeness (in resolution range)	98.8 (45.51-1.57) 98.8 (45.51-1.57)	Depositor EDS
$R_{merge}$	(Not available)	Depositor
$R_{sym}$	(Not available)	Depositor
$\langle I/\sigma(I) \rangle$ <sup>1</sup>	1.06 (at 1.58Å)	Xtriage
Refinement program	PHENIX 1.10.1_2155	Depositor
R, $R_{free}$	0.155 , 0.187 0.155 , 0.187	Depositor DCC
$R_{free}$ test set	4243 reflections (5.01%)	wwPDB-VP
Wilson B-factor (Å <sup>2</sup> )	17.3	Xtriage
Anisotropy	0.245	Xtriage
Bulk solvent $k_{sol}$ (e/Å <sup>3</sup> ), $B_{sol}$ (Å <sup>2</sup> )	0.34 , 40.2	EDS
L-test for twinning <sup>2</sup>	$\langle  L  \rangle = 0.48$ , $\langle L^2 \rangle = 0.31$	Xtriage
Estimated twinning fraction	0.019 for -h,l,k	Xtriage
$F_o, F_c$ correlation	0.97	EDS
Total number of atoms	4942	wwPDB-VP
Average B, all atoms (Å <sup>2</sup> )	20.0	wwPDB-VP

Xtriage's analysis on translational NCS is as follows: *The largest off-origin peak in the Patterson function is 5.10% of the height of the origin peak. No significant pseudotranslation is detected.*

<sup>1</sup>Intensities estimated from amplitudes.

<sup>2</sup>Theoretical values of  $\langle |L| \rangle$ ,  $\langle L^2 \rangle$  for acentric reflections are 0.5, 0.333 respectively for untwinned datasets, and 0.375, 0.2 for perfectly twinned datasets.

## 5 Model quality [i](#)

### 5.1 Standard geometry [i](#)

Bond lengths and bond angles in the following residue types are not validated in this section: GAL, PKM

The Z score for a bond length (or angle) is the number of standard deviations the observed value is removed from the expected value. A bond length (or angle) with  $|Z| > 5$  is considered an outlier worth inspection. RMSZ is the root-mean-square of all Z scores of the bond lengths (or angles).

Mol	Chain	Bond lengths		Bond angles	
		RMSZ	# Z  >5	RMSZ	# Z  >5
1	A	0.61	0/1473	0.73	0/2009
1	B	0.56	0/1544	0.69	0/2104
1	C	0.59	0/1492	0.70	0/2037
All	All	0.58	0/4509	0.71	0/6150

There are no bond length outliers.

There are no bond angle outliers.

There are no chirality outliers.

There are no planarity outliers.

### 5.2 Too-close contacts [i](#)

In the following table, the Non-H and H(model) columns list the number of non-hydrogen atoms and hydrogen atoms in the chain respectively. The H(added) column lists the number of hydrogen atoms added and optimized by MolProbity. The Clashes column lists the number of clashes within the asymmetric unit, whereas Symm-Clashes lists symmetry-related clashes.

Mol	Chain	Non-H	H(model)	H(added)	Clashes	Symm-Clashes
1	A	1435	0	1382	7	0
1	B	1505	0	1463	4	0
1	C	1456	0	1400	4	0
2	D	35	0	11	0	0
3	A	24	0	0	0	0
3	C	24	0	0	0	0
4	A	152	0	0	0	0
4	B	142	0	0	1	0
4	C	169	0	0	0	0
All	All	4942	0	4256	13	0



The all-atom clashscore is defined as the number of clashes found per 1000 atoms (including hydrogen atoms). The all-atom clashscore for this structure is 1.

All (13) close contacts within the same asymmetric unit are listed below, sorted by their clash magnitude.

Atom-1	Atom-2	Interatomic distance (Å)	Clash overlap (Å)
1:B:290:LYS:NZ	1:B:338:CYS:SG	2.60	0.74
1:C:290:LYS:NZ	1:C:338:CYS:SG	2.62	0.72
1:A:196[A]:GLU:HG2	1:A:197:THR:HG23	1.71	0.71
1:A:290:LYS:NZ	1:A:338:CYS:SG	2.68	0.67
1:C:327:VAL:HB	1:C:345:ASP:HB2	1.94	0.49
1:A:327:VAL:HB	1:A:345:ASP:HB2	1.97	0.47
1:A:246:ASN:HB3	1:A:252:LEU:HD21	1.97	0.45
1:B:327:VAL:HB	1:B:345:ASP:HB2	1.99	0.44
1:A:361:SER:HA	1:B:306:GLY:O	2.19	0.42
1:B:196:GLU:HG2	4:B:500:HOH:O	2.19	0.42
1:C:184:TRP:CH2	1:C:187:PRO:HD3	2.56	0.41
1:A:306:GLY:O	1:C:361:SER:HA	2.21	0.41
1:A:354:ASP:HA	1:A:355:PRO:HD3	1.87	0.40

There are no symmetry-related clashes.

## 5.3 Torsion angles [i](#)

### 5.3.1 Protein backbone [i](#)

In the following table, the Percentiles column shows the percent Ramachandran outliers of the chain as a percentile score with respect to all X-ray entries followed by that with respect to entries of similar resolution.

The Analysed column shows the number of residues for which the backbone conformation was analysed, and the total number of residues.

Mol	Chain	Analysed	Favoured	Allowed	Outliers	Percentiles	
1	A	180/371 (48%)	175 (97%)	5 (3%)	0	100	100
1	B	190/371 (51%)	180 (95%)	10 (5%)	0	100	100
1	C	186/371 (50%)	182 (98%)	4 (2%)	0	100	100
All	All	556/1113 (50%)	537 (97%)	19 (3%)	0	100	100

There are no Ramachandran outliers to report.

### 5.3.2 Protein sidechains [i](#)

In the following table, the Percentiles column shows the percent sidechain outliers of the chain as a percentile score with respect to all X-ray entries followed by that with respect to entries of similar resolution.

The Analysed column shows the number of residues for which the sidechain conformation was analysed, and the total number of residues.

Mol	Chain	Analysed	Rotameric	Outliers	Percentiles	
1	A	162/317 (51%)	159 (98%)	3 (2%)	52	24
1	B	172/317 (54%)	169 (98%)	3 (2%)	56	29
1	C	162/317 (51%)	160 (99%)	2 (1%)	67	46
All	All	496/951 (52%)	488 (98%)	8 (2%)	58	33

All (8) residues with a non-rotameric sidechain are listed below:

Mol	Chain	Res	Type
1	A	184	TRP
1	A	212	SER
1	A	213	GLN
1	B	184	TRP
1	B	269	ASN
1	B	292	THR
1	C	184	TRP
1	C	254	ASP

Sometimes sidechains can be flipped to improve hydrogen bonding and reduce clashes. There are no such sidechains identified.

### 5.3.3 RNA [i](#)

There are no RNA molecules in this entry.

## 5.4 Non-standard residues in protein, DNA, RNA chains [i](#)

There are no non-standard protein/DNA/RNA residues in this entry.

## 5.5 Carbohydrates [i](#)

2 monosaccharides are modelled in this entry.

In the following table, the Counts columns list the number of bonds (or angles) for which Mogul statistics could be retrieved, the number of bonds (or angles) that are observed in the model and the number of bonds (or angles) that are defined in the Chemical Component Dictionary. The Link column lists molecule types, if any, to which the group is linked. The Z score for a bond length (or angle) is the number of standard deviations the observed value is removed from the expected value. A bond length (or angle) with  $|Z| > 2$  is considered an outlier worth inspection. RMSZ is the root-mean-square of all Z scores of the bond lengths (or angles).

Mol	Type	Chain	Res	Link	Bond lengths			Bond angles		
					Counts	RMSZ	# $ Z  > 2$	Counts	RMSZ	# $ Z  > 2$
2	GAL	D	1	2	12,12,12	0.78	1 (8%)	17,17,17	0.93	1 (5%)
2	PKM	D	2	2	23,23,24	0.96	1 (4%)	26,32,35	1.34	4 (15%)

In the following table, the Chirals column lists the number of chiral outliers, the number of chiral centers analysed, the number of these observed in the model and the number defined in the Chemical Component Dictionary. Similar counts are reported in the Torsion and Rings columns. '-' means no outliers of that kind were identified.

Mol	Type	Chain	Res	Link	Chirals	Torsions	Rings
2	GAL	D	1	2	-	0/2/22/22	0/1/1/1
2	PKM	D	2	2	-	2/22/38/42	0/1/1/1

All (2) bond length outliers are listed below:

Mol	Chain	Res	Type	Atoms	Z	Observed(Å)	Ideal(Å)
2	D	2	PKM	C2-C1	3.06	1.55	1.52
2	D	1	GAL	O1-C1	2.13	1.46	1.39

All (5) bond angle outliers are listed below:

Mol	Chain	Res	Type	Atoms	Z	Observed(°)	Ideal(°)
2	D	2	PKM	O1A-C1-C2	-3.22	114.96	122.57
2	D	2	PKM	C4-O4-C	2.71	121.72	117.46
2	D	2	PKM	C9-C8-C7	-2.47	107.06	112.41
2	D	1	GAL	C1-O5-C5	-2.18	109.55	113.66
2	D	2	PKM	O1B-C1-C2	2.12	119.09	113.03

There are no chirality outliers.

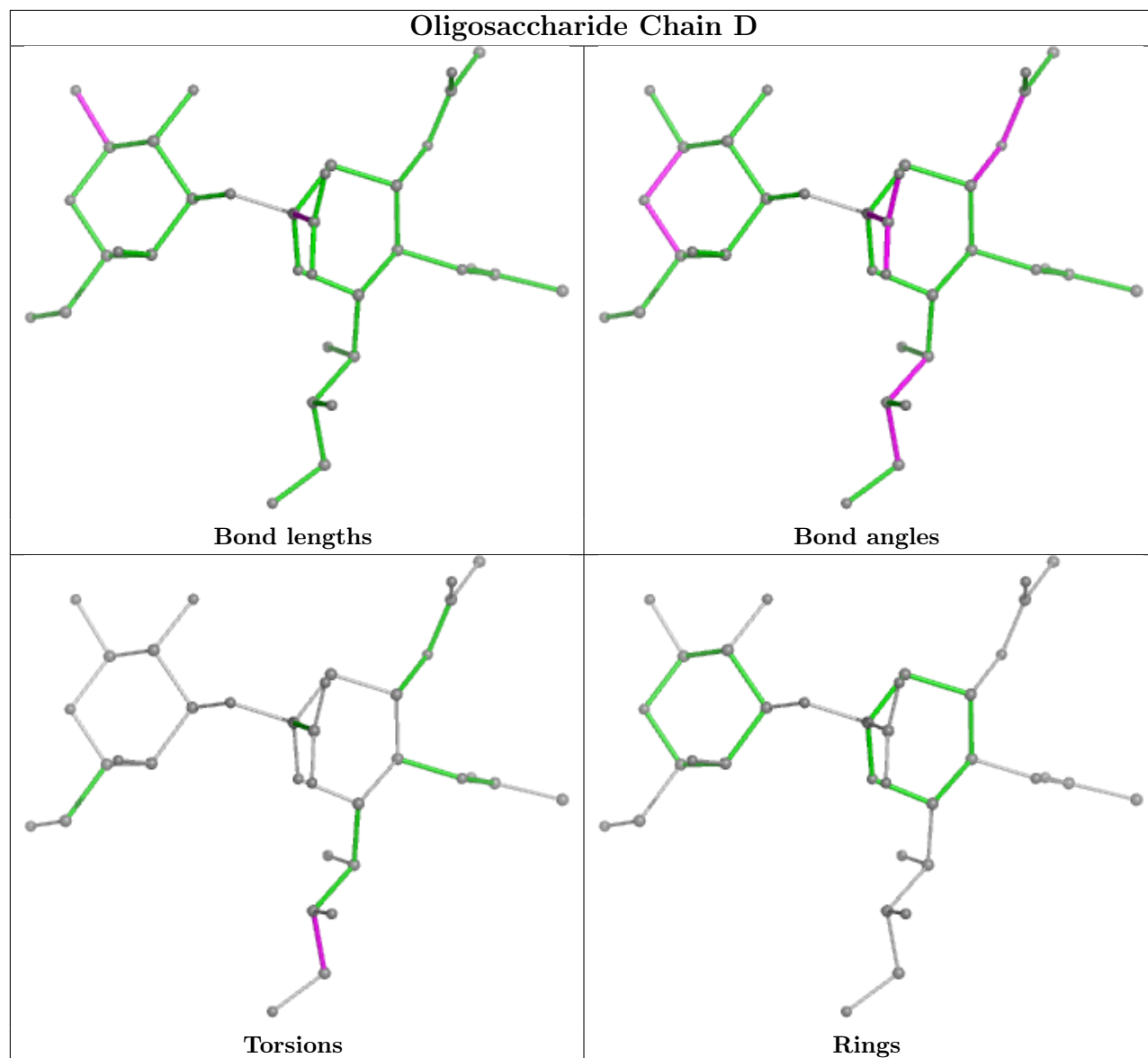
All (2) torsion outliers are listed below:

Mol	Chain	Res	Type	Atoms
2	D	2	PKM	O8-C8-C9-O9
2	D	2	PKM	C7-C8-C9-O9

There are no ring outliers.

No monomer is involved in short contacts.

The following is a two-dimensional graphical depiction of Mogul quality analysis of bond lengths, bond angles, torsion angles, and ring geometry for oligosaccharide.



## 5.6 Ligand geometry [i](#)

2 ligands are modelled in this entry.

In the following table, the Counts columns list the number of bonds (or angles) for which Mogul statistics could be retrieved, the number of bonds (or angles) that are observed in the model and the number of bonds (or angles) that are defined in the Chemical Component Dictionary. The Link column lists molecule types, if any, to which the group is linked. The Z score for a bond length (or angle) is the number of standard deviations the observed value is removed from the

expected value. A bond length (or angle) with  $|Z| > 2$  is considered an outlier worth inspection. RMSZ is the root-mean-square of all Z scores of the bond lengths (or angles).

Mol	Type	Chain	Res	Link	Bond lengths			Bond angles		
					Counts	RMSZ	$\# Z  > 2$	Counts	RMSZ	$\# Z  > 2$
3	PKM	A	401	-	24,24,24	1.59	3 (12%)	29,35,35	1.43	5 (17%)
3	PKM	C	401	-	24,24,24	1.59	3 (12%)	29,35,35	1.37	4 (13%)

In the following table, the Chirals column lists the number of chiral outliers, the number of chiral centers analysed, the number of these observed in the model and the number defined in the Chemical Component Dictionary. Similar counts are reported in the Torsion and Rings columns. '-' means no outliers of that kind were identified.

Mol	Type	Chain	Res	Link	Chirals	Torsions	Rings
3	PKM	A	401	-	-	1/24/42/42	0/1/1/1
3	PKM	C	401	-	-	2/24/42/42	0/1/1/1

All (6) bond length outliers are listed below:

Mol	Chain	Res	Type	Atoms	Z	Observed(Å)	Ideal(Å)
3	A	401	PKM	O2-C2	5.83	1.47	1.39
3	C	401	PKM	O2-C2	5.79	1.47	1.39
3	C	401	PKM	C3-C2	2.77	1.55	1.51
3	C	401	PKM	C2-C1	2.70	1.57	1.53
3	A	401	PKM	C5-N5	2.20	1.49	1.45
3	A	401	PKM	C2-C1	2.10	1.57	1.53

All (9) bond angle outliers are listed below:

Mol	Chain	Res	Type	Atoms	Z	Observed(°)	Ideal(°)
3	C	401	PKM	O1A-C1-C2	-3.96	117.59	123.59
3	A	401	PKM	O1A-C1-C2	-3.45	118.36	123.59
3	A	401	PKM	C8-C7-C6	-3.21	106.94	113.03
3	C	401	PKM	C9-C8-C7	-2.99	105.93	112.41
3	A	401	PKM	C9-C8-C7	-2.87	106.19	112.41
3	A	401	PKM	C4-C5-N5	-2.64	104.91	110.62
3	C	401	PKM	O2-C2-O6	-2.40	103.33	109.42
3	A	401	PKM	O6-C6-C5	-2.19	107.64	109.78
3	C	401	PKM	C4-C5-N5	-2.07	106.13	110.62

There are no chirality outliers.

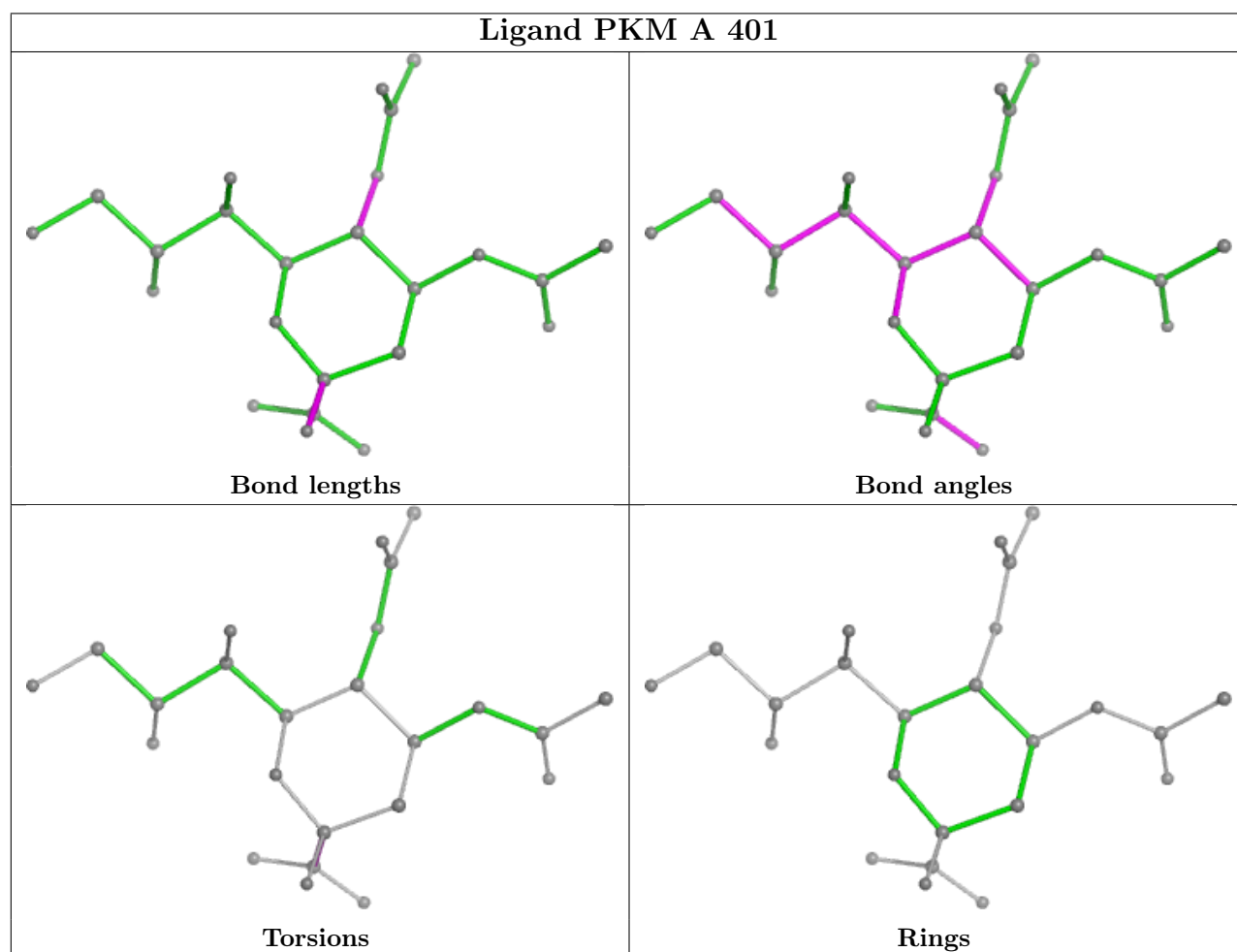
All (3) torsion outliers are listed below:

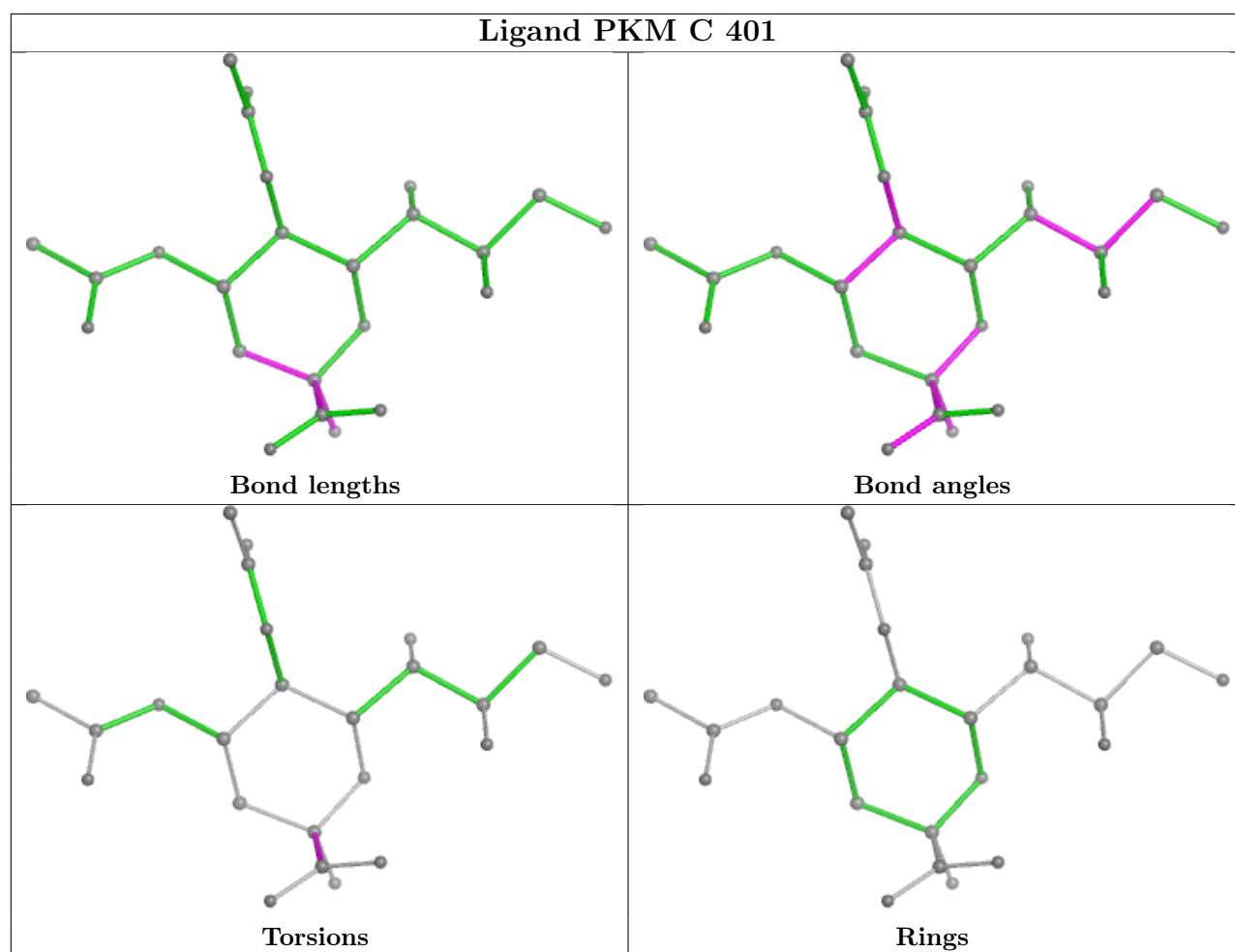
Mol	Chain	Res	Type	Atoms
3	A	401	PKM	O1A-C1-C2-O6
3	C	401	PKM	O1A-C1-C2-O6
3	C	401	PKM	O1A-C1-C2-O2

There are no ring outliers.

No monomer is involved in short contacts.

The following is a two-dimensional graphical depiction of Mogul quality analysis of bond lengths, bond angles, torsion angles, and ring geometry for all instances of the Ligand of Interest. In addition, ligands with molecular weight > 250 and outliers as shown on the validation Tables will also be included. For torsion angles, if less than 5% of the Mogul distribution of torsion angles is within 10 degrees of the torsion angle in question, then that torsion angle is considered an outlier. Any bond that is central to one or more torsion angles identified as an outlier by Mogul will be highlighted in the graph. For rings, the root-mean-square deviation (RMSD) between the ring in question and similar rings identified by Mogul is calculated over all ring torsion angles. If the average RMSD is greater than 60 degrees and the minimal RMSD between the ring in question and any Mogul-identified rings is also greater than 60 degrees, then that ring is considered an outlier. The outliers are highlighted in purple. The color gray indicates Mogul did not find sufficient equivalents in the CSD to analyse the geometry.





## 5.7 Other polymers [i](#)

There are no such residues in this entry.

## 5.8 Polymer linkage issues [i](#)

There are no chain breaks in this entry.

## 6 Fit of model and data [i](#)

### 6.1 Protein, DNA and RNA chains [i](#)

In the following table, the column labelled ‘#RSRZ > 2’ contains the number (and percentage) of RSRZ outliers, followed by percent RSRZ outliers for the chain as percentile scores relative to all X-ray entries and entries of similar resolution. The OWAB column contains the minimum, median, 95<sup>th</sup> percentile and maximum values of the occupancy-weighted average B-factor per residue. The column labelled ‘Q < 0.9’ lists the number of (and percentage) of residues with an average occupancy less than 0.9.

Mol	Chain	Analysed	<RSRZ>	#RSRZ>2	OWAB(Å <sup>2</sup> )	Q<0.9
1	A	182/371 (49%)	-0.39	1 (0%) 87 90	5, 16, 30, 42	4 (2%)
1	B	189/371 (50%)	-0.17	3 (1%) 70 74	6, 18, 40, 55	5 (2%)
1	C	188/371 (50%)	-0.24	9 (4%) 36 39	8, 17, 46, 59	2 (1%)
All	All	559/1113 (50%)	-0.27	13 (2%) 61 66	5, 17, 39, 59	11 (1%)

All (13) RSRZ outliers are listed below:

Mol	Chain	Res	Type	RSRZ
1	C	271	ILE	4.2
1	B	292	THR	4.2
1	C	295	THR	2.7
1	C	297	THR	2.5
1	B	272	GLY	2.4
1	C	296	SER	2.3
1	C	272	GLY	2.3
1	C	293	ASN	2.2
1	C	294	ASN	2.1
1	C	210	CYS	2.1
1	B	297	THR	2.1
1	C	273	THR	2.1
1	A	266	SER	2.0

### 6.2 Non-standard residues in protein, DNA, RNA chains [i](#)

There are no non-standard protein/DNA/RNA residues in this entry.

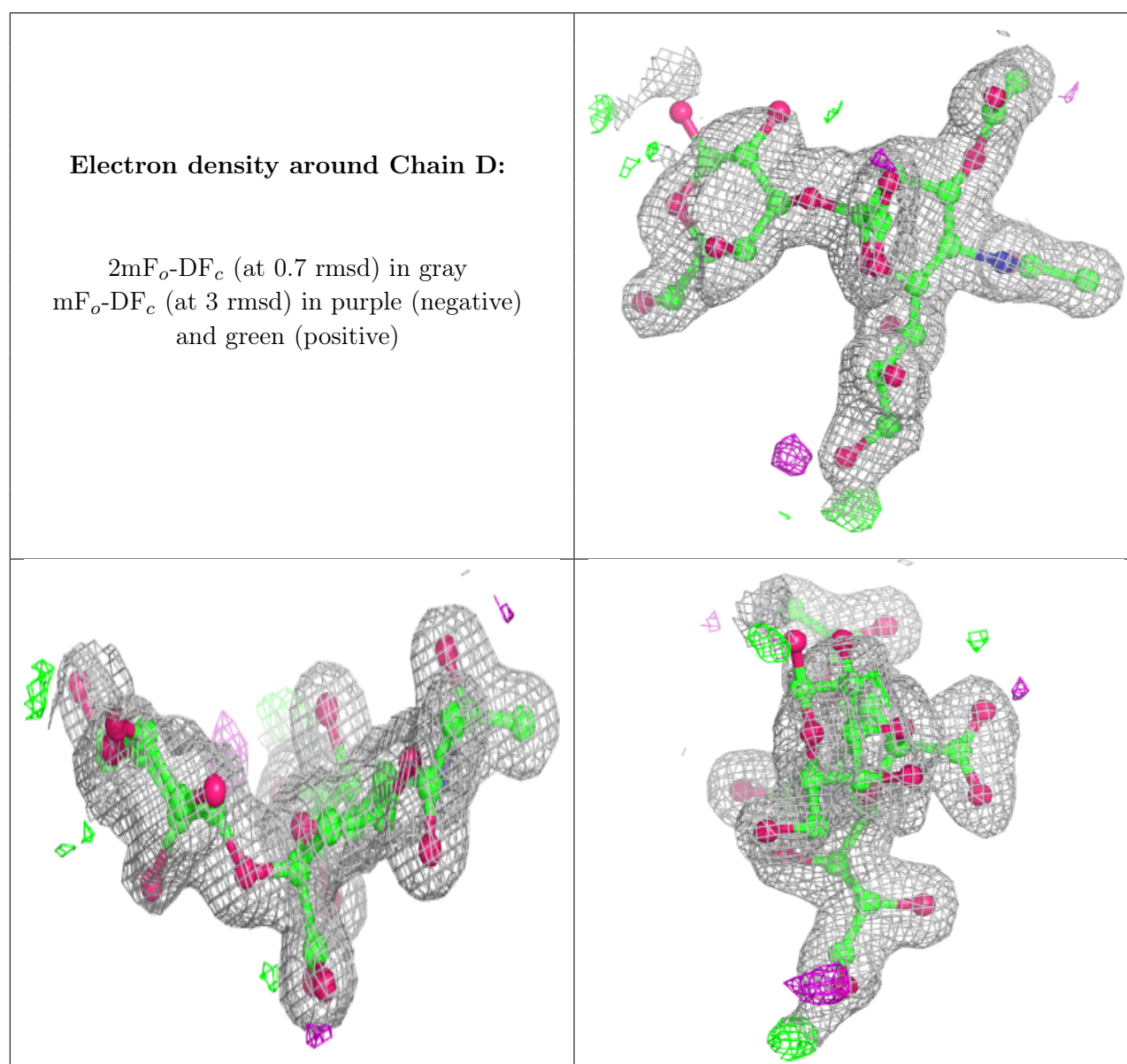


## 6.3 Carbohydrates ⓘ

In the following table, the Atoms column lists the number of modelled atoms in the group and the number defined in the chemical component dictionary. The B-factors column lists the minimum, median, 95<sup>th</sup> percentile and maximum values of B factors of atoms in the group. The column labelled 'Q< 0.9' lists the number of atoms with occupancy less than 0.9.

Mol	Type	Chain	Res	Atoms	RSCC	RSR	B-factors( $\text{\AA}^2$ )	Q<0.9
2	GAL	D	1	12/12	0.83	0.11	32,49,57,65	0
2	PKM	D	2	23/24	0.94	0.07	15,21,26,34	0

The following is a graphical depiction of the model fit to experimental electron density for oligosaccharide. Each fit is shown from different orientation to approximate a three-dimensional view.

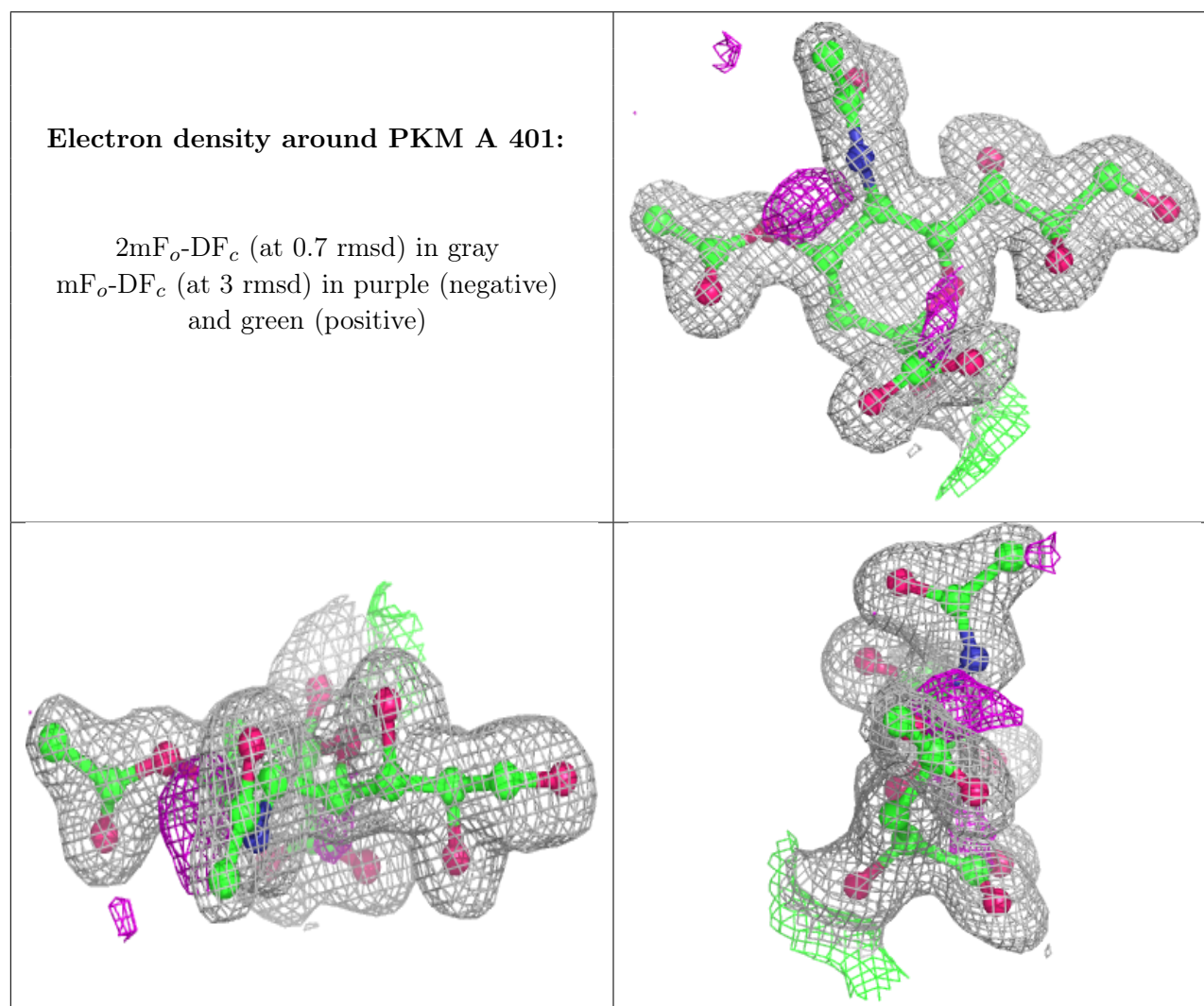


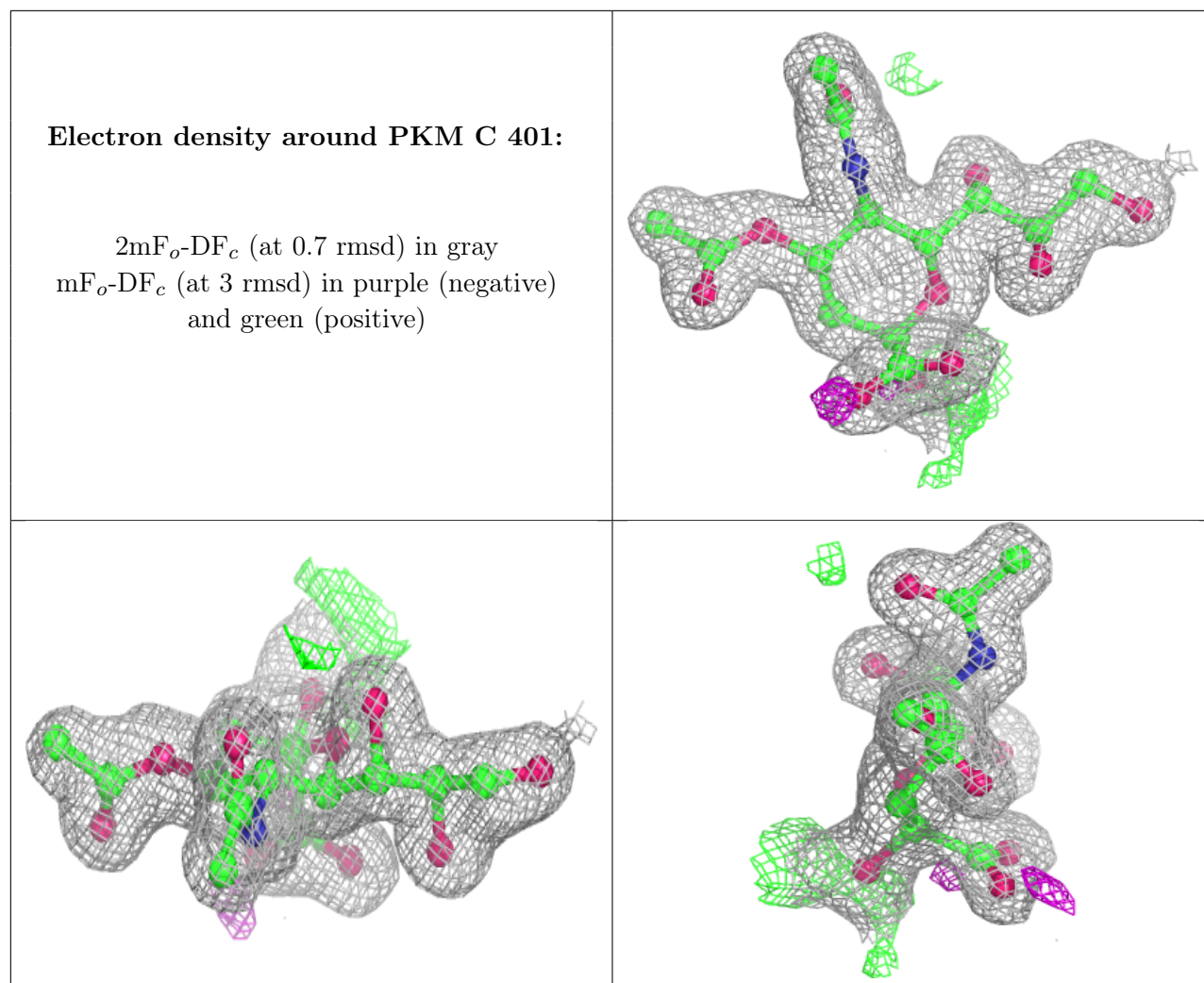
## 6.4 Ligands ⓘ

In the following table, the Atoms column lists the number of modelled atoms in the group and the number defined in the chemical component dictionary. The B-factors column lists the minimum, median, 95<sup>th</sup> percentile and maximum values of B factors of atoms in the group. The column labelled 'Q< 0.9' lists the number of atoms with occupancy less than 0.9.

Mol	Type	Chain	Res	Atoms	RSCC	RSR	B-factors(Å <sup>2</sup> )	Q<0.9
3	PKM	A	401	24/24	0.91	0.08	16,26,32,34	0
3	PKM	C	401	24/24	0.93	0.08	18,24,28,33	0

The following is a graphical depiction of the model fit to experimental electron density of all instances of the Ligand of Interest. In addition, ligands with molecular weight > 250 and outliers as shown on the geometry validation Tables will also be included. Each fit is shown from different orientation to approximate a three-dimensional view.





## 6.5 Other polymers [i](#)

There are no such residues in this entry.