



Full wwPDB EM Validation Report ⓘ

Feb 9, 2025 – 06:57 am GMT

PDB ID : 9EXS
EMDB ID : EMD-50048
Title : Cryo-EM structure of Ch. thermophilum Rail-Rat1 dimer.
Authors : Noskova, N.; Dikunova, A.; Stefl, R.
Deposited on : 2024-04-08
Resolution : 3.28 Å(reported)

This is a Full wwPDB EM Validation Report for a publicly released PDB entry.

We welcome your comments at validation@mail.wwpdb.org

A user guide is available at

<https://www.wwpdb.org/validation/2017/EMValidationReportHelp>

with specific help available everywhere you see the ⓘ symbol.

The types of validation reports are described at

<http://www.wwpdb.org/validation/2017/FAQs#types>.

The following versions of software and data (see [references ⓘ](#)) were used in the production of this report:

EMDB validation analysis : 0.0.1.dev113
MolProbity : 4.02b-467
Percentile statistics : 20231227.v01 (using entries in the PDB archive December 27th 2023)
MapQ : 1.9.13
Ideal geometry (proteins) : Engh & Huber (2001)
Ideal geometry (DNA, RNA) : Parkinson et al. (1996)
Validation Pipeline (wwPDB-VP) : 2.40

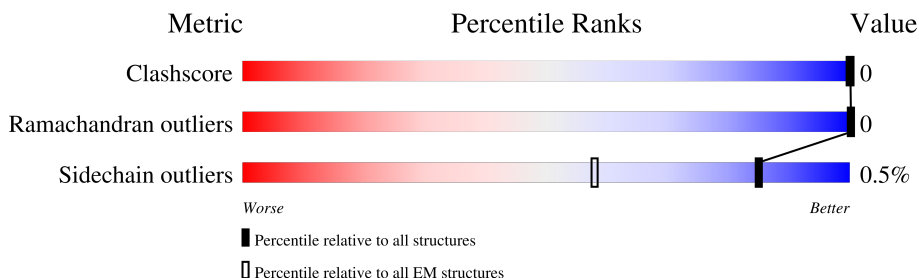
1 Overall quality at a glance

The following experimental techniques were used to determine the structure:

ELECTRON MICROSCOPY



The reported resolution of this entry is 3.28 Å.

Percentile scores (ranging between 0-100) for global validation metrics of the entry are shown in the following graphic. The table shows the number of entries on which the scores are based.



Metric	Whole archive (#Entries)	EM structures (#Entries)
Clashscore	210492	15764
Ramachandran outliers	207382	16835
Sidechain outliers	206894	16415

The table below summarises the geometric issues observed across the polymeric chains and their fit to the map. The red, orange, yellow and green segments of the bar indicate the fraction of residues that contain outliers for ≥ 3 , 2, 1 and 0 types of geometric quality criteria respectively. A grey segment represents the fraction of residues that are not modelled. The numeric value for each fraction is indicated below the corresponding segment, with a dot representing fractions $\leq 5\%$. The upper red bar (where present) indicates the fraction of residues that have poor fit to the EM map (all-atom inclusion $< 40\%$). The numeric value is given above the bar.

Mol	Chain	Length	Quality of chain
1	A	396	 90% 6%
2	B	1066	 57% 41%

2 Entry composition

There are 3 unique types of molecules in this entry. The entry contains 15691 atoms, of which 7675 are hydrogens and 0 are deuteriums.

In the tables below, the AltConf column contains the number of residues with at least one atom in alternate conformation and the Trace column contains the number of residues modelled with at most 2 atoms.

- Molecule 1 is a protein called Decapping nuclease.

Mol	Chain	Residues	Atoms						AltConf	Trace
1	A	374	Total	C	H	N	O	S	0	0
			5841	1914	2840	529	542	16		

- Molecule 2 is a protein called 5'-3' exoribonuclease.

Mol	Chain	Residues	Atoms						AltConf	Trace
2	B	630	Total	C	H	N	O	S	0	0
			9849	3222	4835	863	906	23		

- Molecule 3 is MAGNESIUM ION (three-letter code: MG) (formula: Mg) (labeled as "Ligand of Interest" by depositor).

Mol	Chain	Residues	Atoms		AltConf
3	A	1	Total	Mg	0
			1	1	

4 Experimental information

Property	Value	Source
EM reconstruction method	SINGLE PARTICLE	Depositor
Imposed symmetry	POINT, Not provided	
Number of particles used	622117	Depositor
Resolution determination method	FSC 0.143 CUT-OFF	Depositor
CTF correction method	PHASE FLIPPING AND AMPLITUDE CORRECTION	Depositor
Microscope	FEI TITAN KRIOS	Depositor
Voltage (kV)	300	Depositor
Electron dose ($e^-/\text{\AA}^2$)	40	Depositor
Minimum defocus (nm)	800	Depositor
Maximum defocus (nm)	3500	Depositor
Magnification	Not provided	
Image detector	GATAN K3 (6k x 4k)	Depositor
Maximum map value	0.509	Depositor
Minimum map value	-0.284	Depositor
Average map value	-0.000	Depositor
Map value standard deviation	0.010	Depositor
Recommended contour level	0.0577	Depositor
Map size (Å)	293.568, 293.568, 293.568	wwPDB
Map dimensions	352, 352, 352	wwPDB
Map angles (°)	90.0, 90.0, 90.0	wwPDB
Pixel spacing (Å)	0.834, 0.834, 0.834	Depositor

5 Model quality

5.1 Standard geometry

Bond lengths and bond angles in the following residue types are not validated in this section: MG

The Z score for a bond length (or angle) is the number of standard deviations the observed value is removed from the expected value. A bond length (or angle) with $|Z| > 5$ is considered an outlier worth inspection. RMSZ is the root-mean-square of all Z scores of the bond lengths (or angles).

Mol	Chain	Bond lengths		Bond angles	
		RMSZ	# Z >5	RMSZ	# Z >5
1	A	0.66	0/3081	0.99	15/4182 (0.4%)
2	B	0.65	0/5155	0.98	23/7009 (0.3%)
All	All	0.65	0/8236	0.99	38/11191 (0.3%)

Chiral center outliers are detected by calculating the chiral volume of a chiral center and verifying if the center is modelled as a planar moiety or with the opposite hand. A planarity outlier is detected by checking planarity of atoms in a peptide group, atoms in a mainchain group or atoms of a sidechain that are expected to be planar.

Mol	Chain	#Chirality outliers	#Planarity outliers
1	A	0	1
2	B	0	2
All	All	0	3

There are no bond length outliers.

All (38) bond angle outliers are listed below:

Mol	Chain	Res	Type	Atoms	Z	Observed(°)	Ideal(°)
2	B	805	ARG	NE-CZ-NH2	9.87	125.23	120.30
2	B	222	ARG	NE-CZ-NH2	8.34	124.47	120.30
2	B	41	ARG	NE-CZ-NH2	7.96	124.28	120.30
1	A	36	ARG	NE-CZ-NH2	7.62	124.11	120.30
2	B	805	ARG	NE-CZ-NH1	-7.42	116.59	120.30
2	B	331	ARG	NE-CZ-NH2	7.01	123.81	120.30
2	B	603	ARG	NE-CZ-NH2	6.94	123.77	120.30
2	B	778	ARG	NE-CZ-NH2	6.81	123.71	120.30
2	B	232	ARG	NE-CZ-NH2	6.73	123.67	120.30
1	A	22	ARG	NE-CZ-NH2	6.48	123.54	120.30
1	A	137	ARG	NE-CZ-NH2	6.45	123.52	120.30
2	B	414	ARG	NE-CZ-NH2	6.28	123.44	120.30

Continued on next page...

Continued from previous page...

Mol	Chain	Res	Type	Atoms	Z	Observed(°)	Ideal(°)
2	B	815	ARG	NE-CZ-NH2	6.27	123.43	120.30
1	A	33	ARG	NE-CZ-NH2	6.13	123.36	120.30
2	B	836	ARG	NE-CZ-NH2	6.10	123.35	120.30
1	A	124	ARG	NE-CZ-NH2	6.10	123.35	120.30
1	A	269	ARG	NE-CZ-NH2	6.07	123.33	120.30
1	A	334	ARG	NE-CZ-NH2	6.03	123.32	120.30
2	B	255	ARG	NE-CZ-NH2	5.92	123.26	120.30
2	B	25	ARG	NE-CZ-NH2	5.90	123.25	120.30
2	B	738	ARG	NE-CZ-NH1	5.82	123.21	120.30
1	A	333	ARG	NE-CZ-NH2	5.75	123.17	120.30
1	A	311	ARG	NE-CZ-NH2	5.74	123.17	120.30
2	B	336	ARG	NE-CZ-NH2	5.71	123.15	120.30
1	A	202	ARG	NE-CZ-NH2	5.67	123.13	120.30
2	B	316	ARG	NE-CZ-NH2	5.55	123.07	120.30
2	B	88	ARG	NE-CZ-NH2	5.54	123.07	120.30
2	B	669	ARG	NE-CZ-NH2	5.54	123.07	120.30
1	A	173	ARG	NE-CZ-NH2	5.50	123.05	120.30
1	A	180	ARG	NE-CZ-NH2	5.38	122.99	120.30
2	B	719	ARG	NE-CZ-NH2	5.32	122.96	120.30
1	A	321	ARG	NE-CZ-NH2	5.31	122.96	120.30
2	B	232	ARG	NE-CZ-NH1	-5.28	117.66	120.30
2	B	109	ARG	NE-CZ-NH2	5.25	122.92	120.30
2	B	582	ARG	NE-CZ-NH2	5.10	122.85	120.30
1	A	258	TYR	CB-CG-CD2	-5.10	117.94	121.00
1	A	58	ARG	NE-CZ-NH2	5.04	122.82	120.30
2	B	655	ARG	NE-CZ-NH2	5.01	122.81	120.30

There are no chirality outliers.

All (3) planarity outliers are listed below:

Mol	Chain	Res	Type	Group
1	A	31	TYR	Sidechain
2	B	318	TYR	Sidechain
2	B	41	ARG	Sidechain

5.2 Too-close contacts ⓘ

In the following table, the Non-H and H(model) columns list the number of non-hydrogen atoms and hydrogen atoms in the chain respectively. The H(added) column lists the number of hydrogen atoms added and optimized by MolProbity. The Clashes column lists the number of clashes within the asymmetric unit, whereas Symm-Clashes lists symmetry-related clashes.

Mol	Chain	Non-H	H(model)	H(added)	Clashes	Symm-Clashes
1	A	3001	2840	2840	0	0
2	B	5014	4835	4831	0	0
3	A	1	0	0	0	0
All	All	8016	7675	7671	0	0

The all-atom clashscore is defined as the number of clashes found per 1000 atoms (including hydrogen atoms). The all-atom clashscore for this structure is 0.

There are no clashes within the asymmetric unit.

There are no symmetry-related clashes.

5.3 Torsion angles [i](#)

5.3.1 Protein backbone [i](#)

In the following table, the Percentiles column shows the percent Ramachandran outliers of the chain as a percentile score with respect to all PDB entries followed by that with respect to all EM entries.

The Analysed column shows the number of residues for which the backbone conformation was analysed, and the total number of residues.

Mol	Chain	Analysed	Favoured	Allowed	Outliers	Percentiles	
1	A	372/396 (94%)	365 (98%)	7 (2%)	0	100	100
2	B	622/1066 (58%)	608 (98%)	14 (2%)	0	100	100
All	All	994/1462 (68%)	973 (98%)	21 (2%)	0	100	100

There are no Ramachandran outliers to report.

5.3.2 Protein sidechains [i](#)

In the following table, the Percentiles column shows the percent sidechain outliers of the chain as a percentile score with respect to all PDB entries followed by that with respect to all EM entries.

The Analysed column shows the number of residues for which the sidechain conformation was analysed, and the total number of residues.

Mol	Chain	Analysed	Rotameric	Outliers	Percentiles	
1	A	303/342 (89%)	302 (100%)	1 (0%)	91	94
2	B	518/886 (58%)	515 (99%)	3 (1%)	84	90

Continued on next page...

Continued from previous page...

Mol	Chain	Analysed	Rotameric	Outliers	Percentiles	
All	All	821/1228 (67%)	817 (100%)	4 (0%)	85	91

All (4) residues with a non-rotameric sidechain are listed below:

Mol	Chain	Res	Type
1	A	334	ARG
2	B	198	LYS
2	B	743	PHE
2	B	836	ARG

Sometimes sidechains can be flipped to improve hydrogen bonding and reduce clashes. There are no such sidechains identified.

5.3.3 RNA ⓘ

There are no RNA molecules in this entry.

5.4 Non-standard residues in protein, DNA, RNA chains ⓘ

There are no non-standard protein/DNA/RNA residues in this entry.

5.5 Carbohydrates ⓘ

There are no oligosaccharides in this entry.

5.6 Ligand geometry ⓘ

Of 1 ligands modelled in this entry, 1 is monoatomic - leaving 0 for Mogul analysis.

There are no bond length outliers.

There are no bond angle outliers.

There are no chirality outliers.

There are no torsion outliers.

There are no ring outliers.

No monomer is involved in short contacts.

5.7 Other polymers

There are no such residues in this entry.

5.8 Polymer linkage issues

There are no chain breaks in this entry.

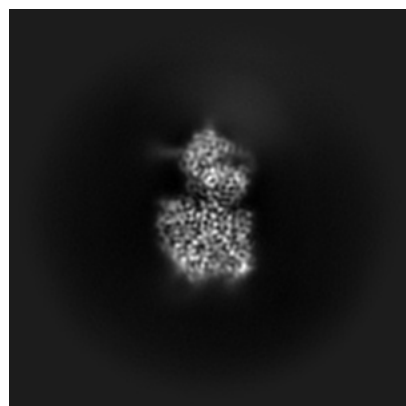
6 Map visualisation [i](#)

This section contains visualisations of the EMDB entry EMD-50048. These allow visual inspection of the internal detail of the map and identification of artifacts.

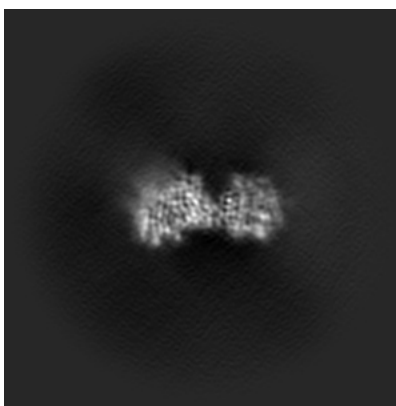
Images derived from a raw map, generated by summing the deposited half-maps, are presented below the corresponding image components of the primary map to allow further visual inspection and comparison with those of the primary map.

6.1 Orthogonal projections [i](#)

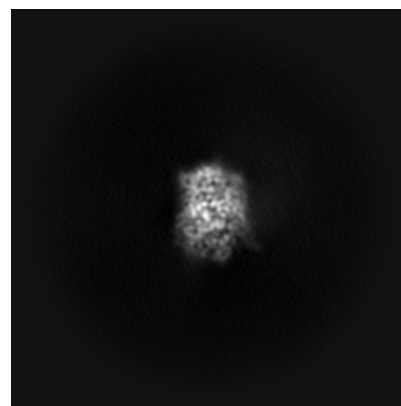
6.1.1 Primary map



X

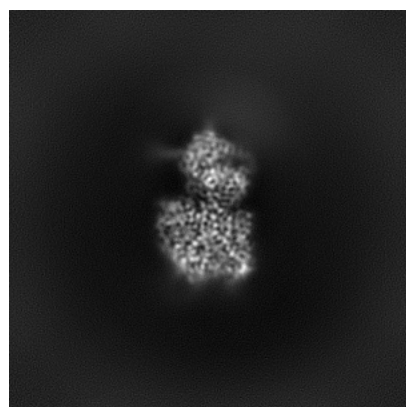


Y

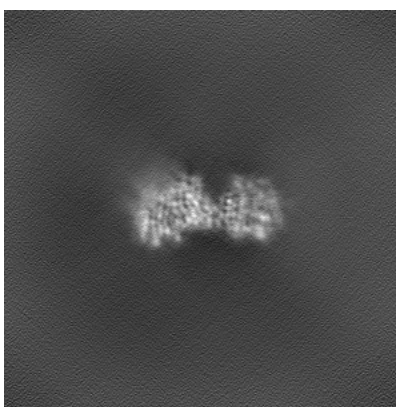


Z

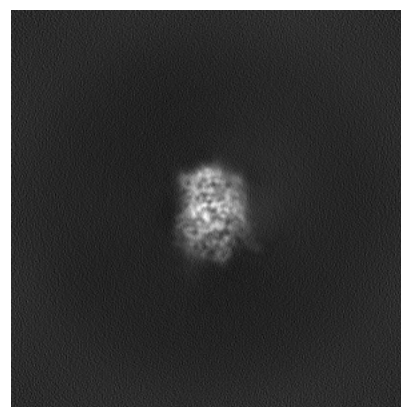
6.1.2 Raw map



X



Y

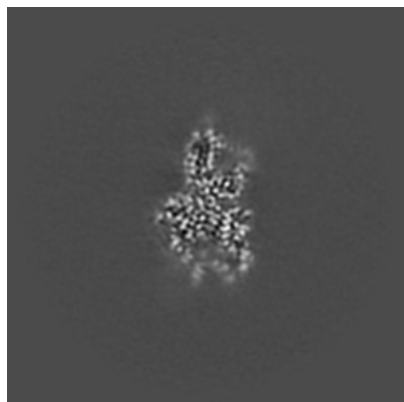


Z

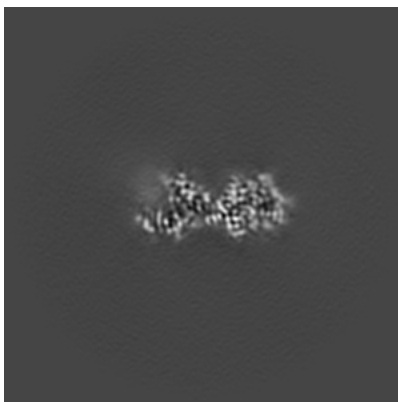
The images above show the map projected in three orthogonal directions.

6.2 Central slices [i](#)

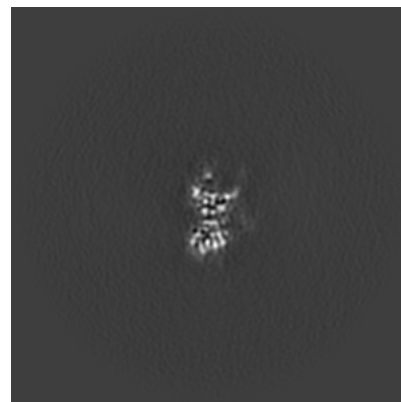
6.2.1 Primary map



X Index: 176

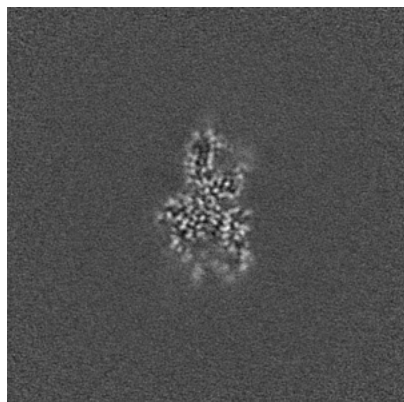


Y Index: 176

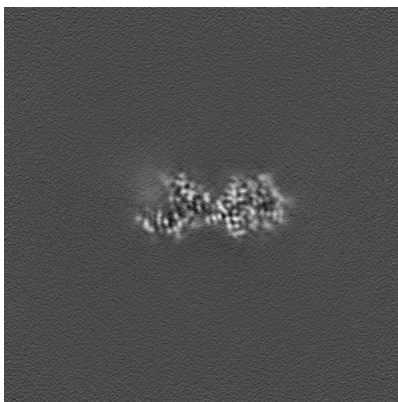


Z Index: 176

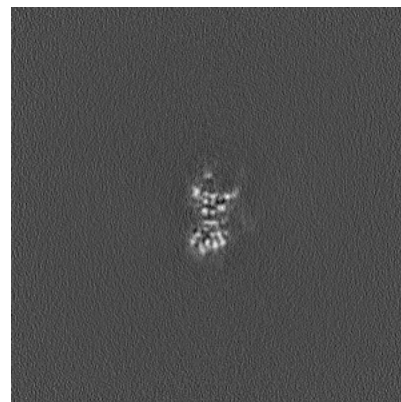
6.2.2 Raw map



X Index: 176



Y Index: 176

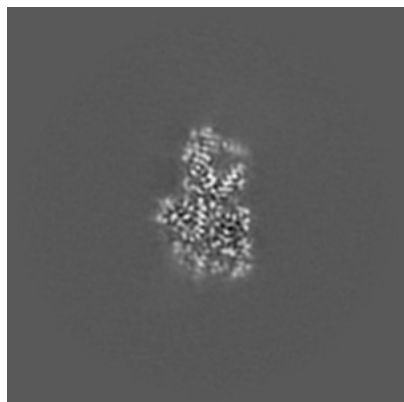


Z Index: 176

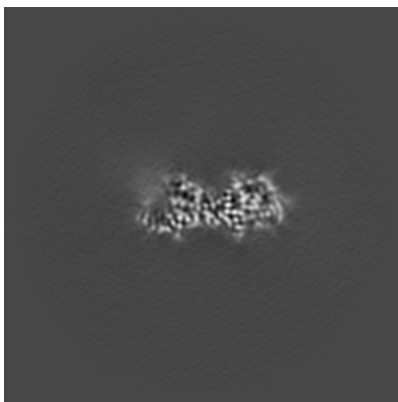
The images above show central slices of the map in three orthogonal directions.

6.3 Largest variance slices [i](#)

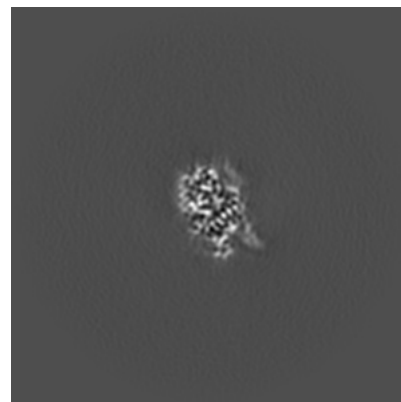
6.3.1 Primary map



X Index: 171

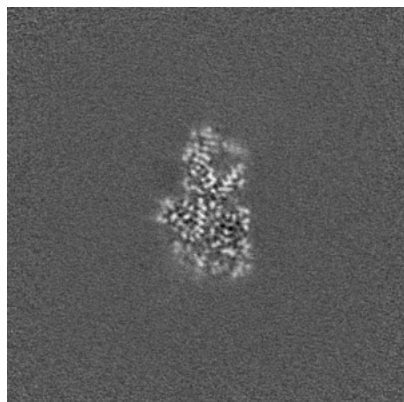


Y Index: 179

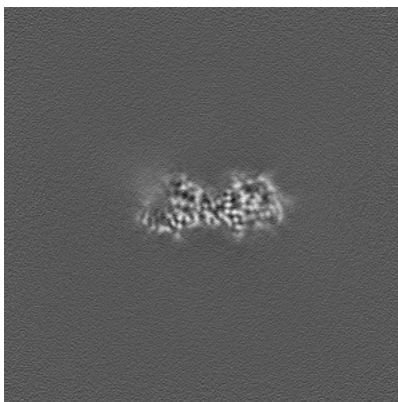


Z Index: 154

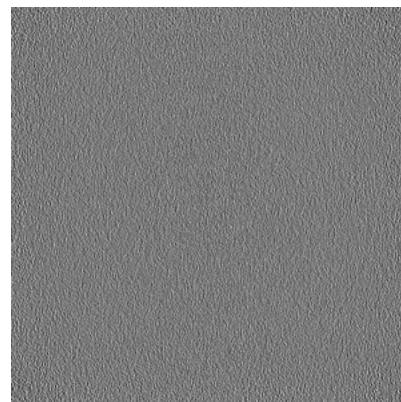
6.3.2 Raw map



X Index: 171



Y Index: 179

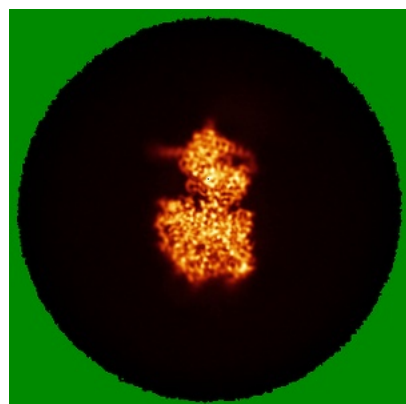


Z Index: 351

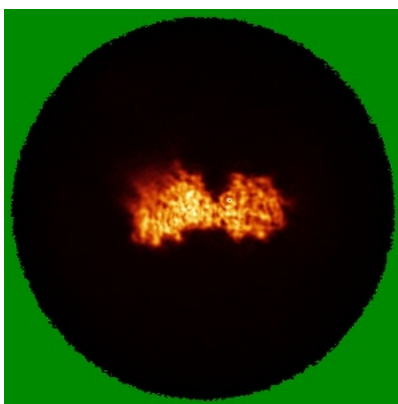
The images above show the largest variance slices of the map in three orthogonal directions.

6.4 Orthogonal standard-deviation projections (False-color) [i](#)

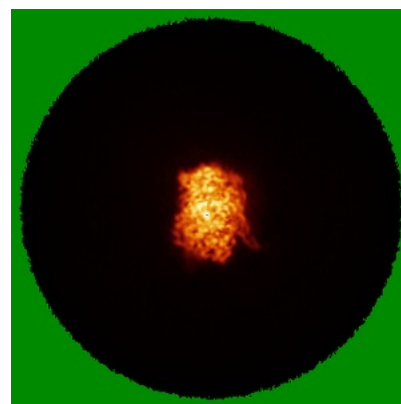
6.4.1 Primary map



X

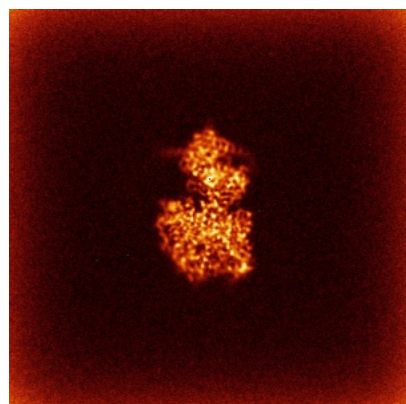


Y

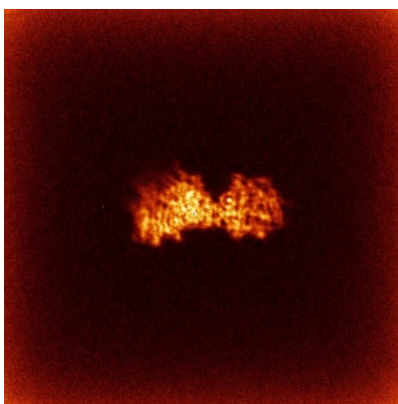


Z

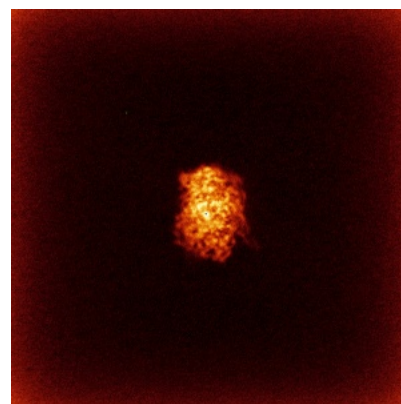
6.4.2 Raw map



X



Y

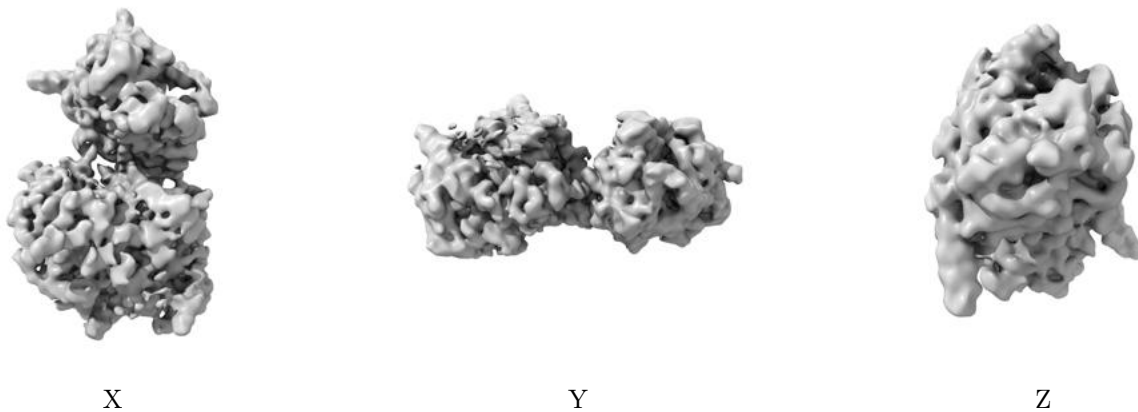


Z

The images above show the map standard deviation projections with false color in three orthogonal directions. Minimum values are shown in green, max in blue, and dark to light orange shades represent small to large values respectively.

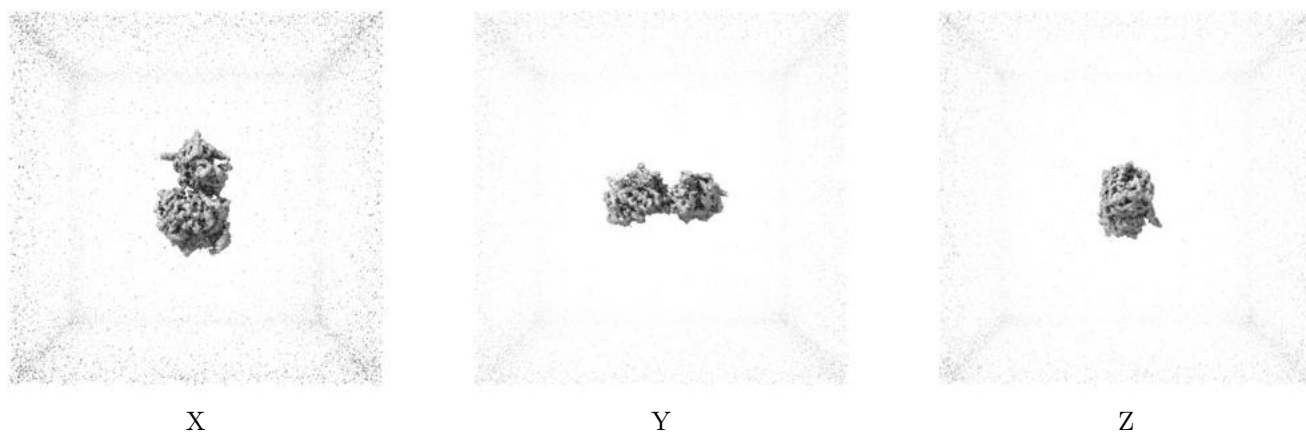
6.5 Orthogonal surface views [i](#)

6.5.1 Primary map



The images above show the 3D surface view of the map at the recommended contour level 0.0577. These images, in conjunction with the slice images, may facilitate assessment of whether an appropriate contour level has been provided.

6.5.2 Raw map



These images show the 3D surface of the raw map. The raw map's contour level was selected so that its surface encloses the same volume as the primary map does at its recommended contour level.

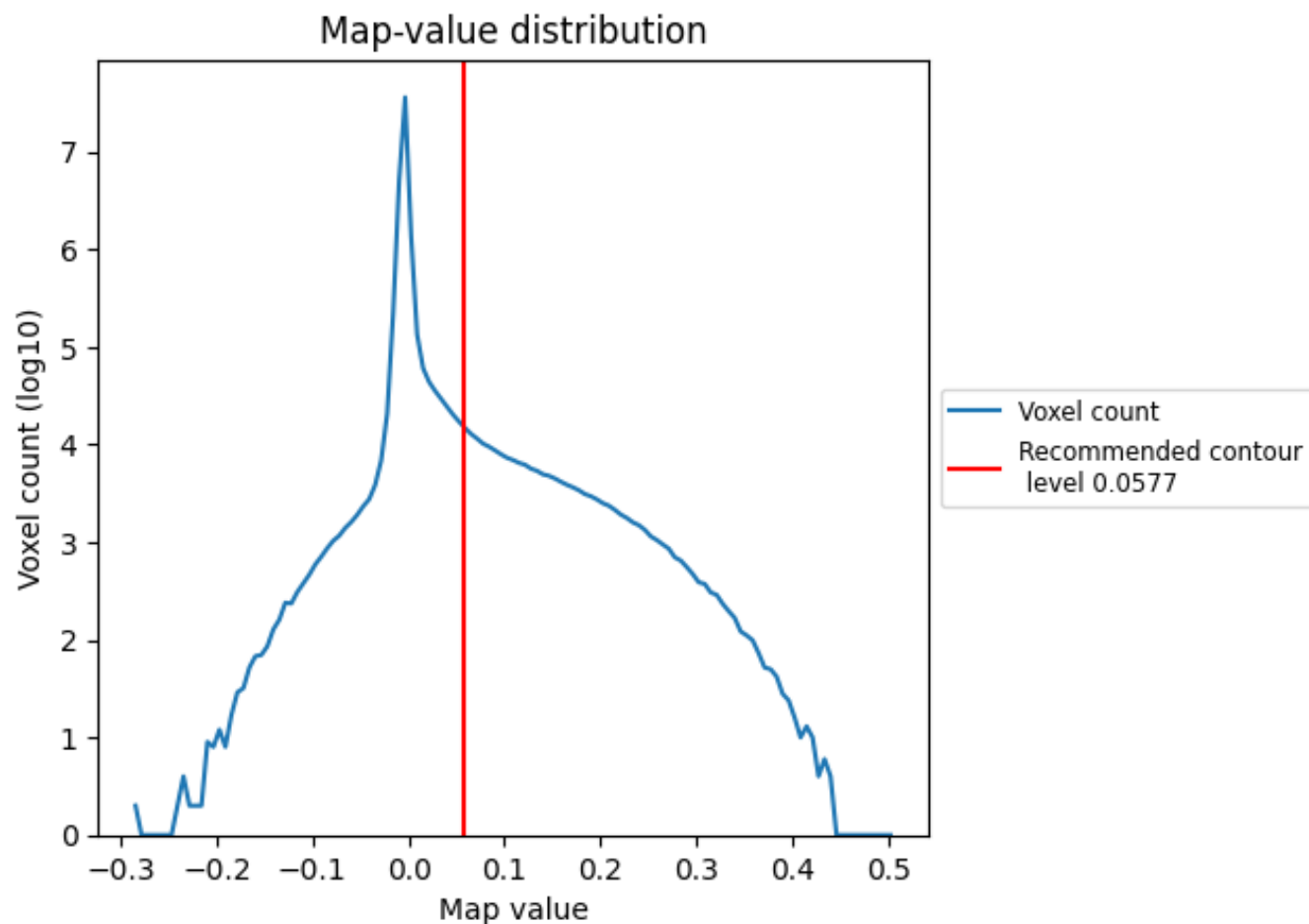
6.6 Mask visualisation [i](#)

This section was not generated. No masks/segmentation were deposited.

7 Map analysis [i](#)

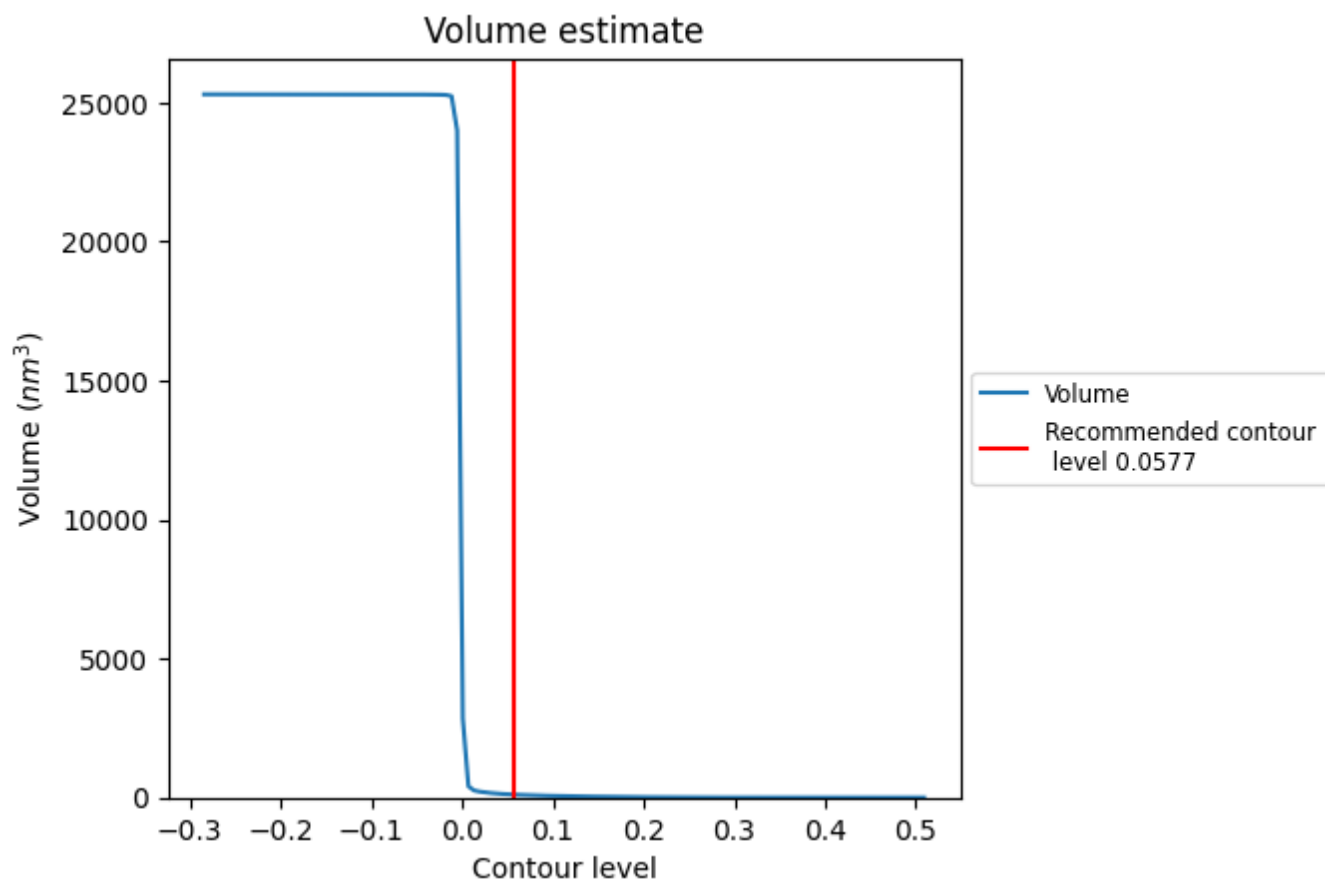
This section contains the results of statistical analysis of the map.

7.1 Map-value distribution [i](#)



The map-value distribution is plotted in 128 intervals along the x-axis. The y-axis is logarithmic. A spike in this graph at zero usually indicates that the volume has been masked.

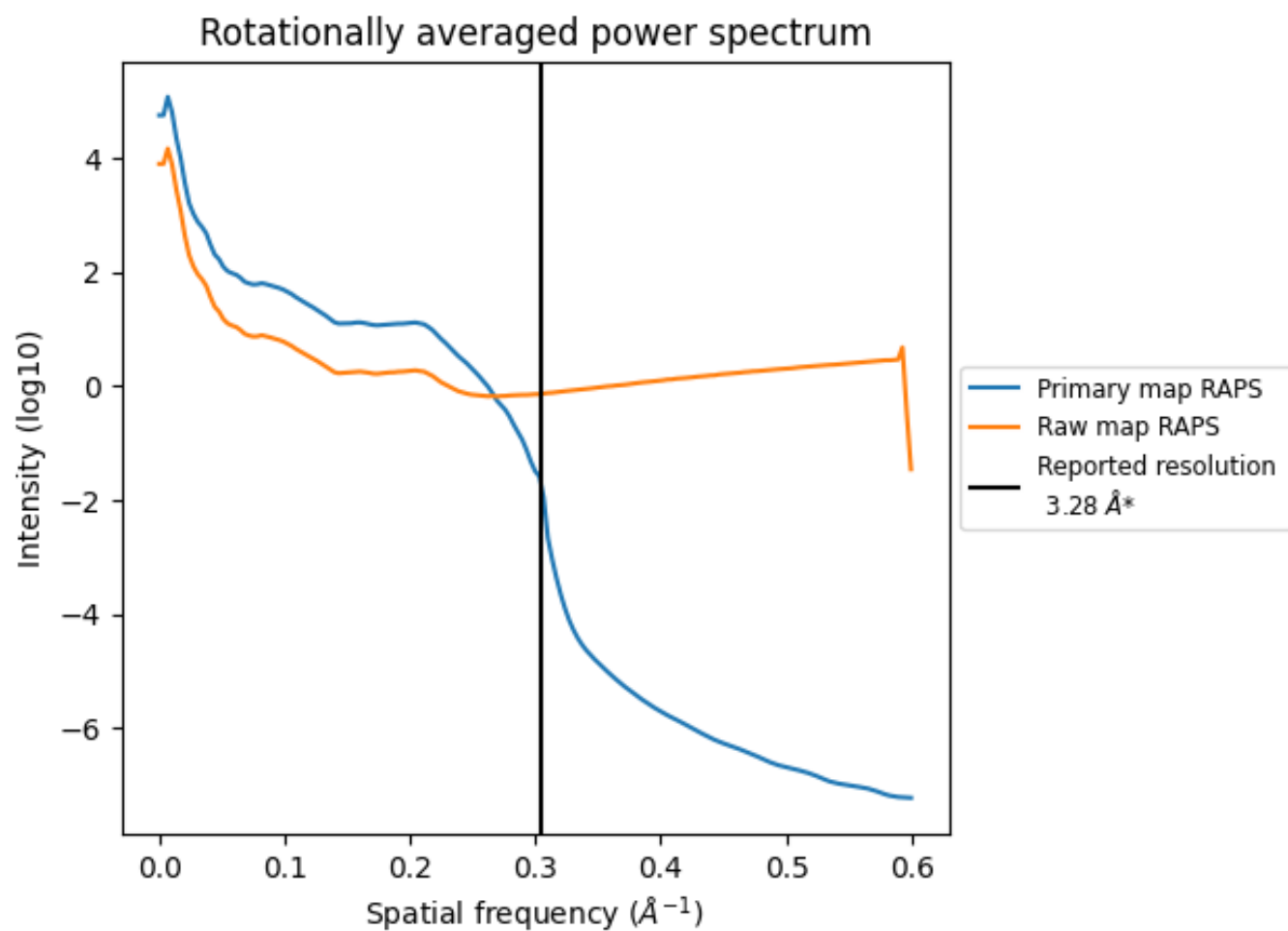
7.2 Volume estimate [i](#)



The volume at the recommended contour level is 104 nm³; this corresponds to an approximate mass of 94 kDa.

The volume estimate graph shows how the enclosed volume varies with the contour level. The recommended contour level is shown as a vertical line and the intersection between the line and the curve gives the volume of the enclosed surface at the given level.

7.3 Rotationally averaged power spectrum ⓘ

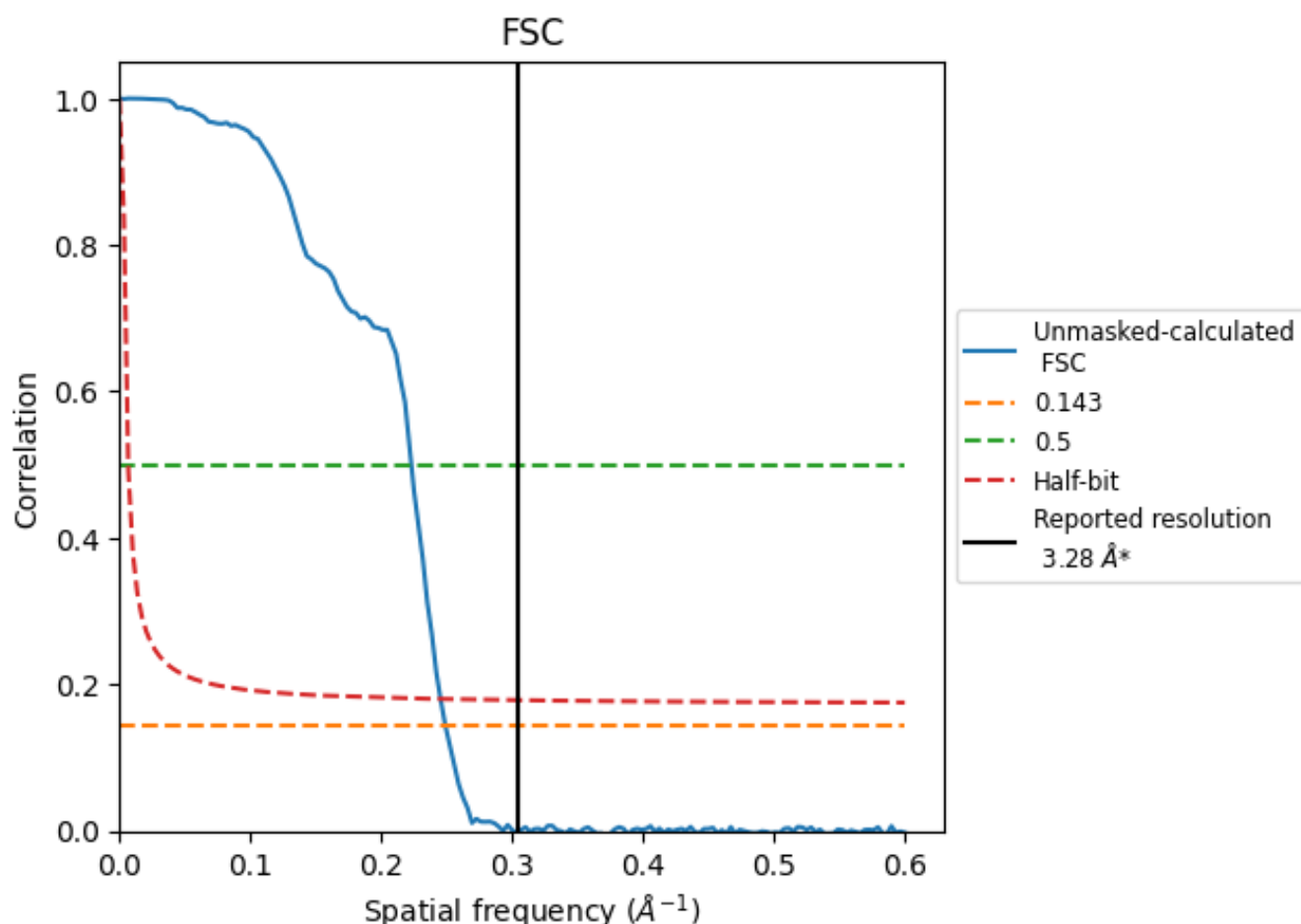


*Reported resolution corresponds to spatial frequency of 0.305 \AA^{-1}

8 Fourier-Shell correlation [i](#)

Fourier-Shell Correlation (FSC) is the most commonly used method to estimate the resolution of single-particle and subtomogram-averaged maps. The shape of the curve depends on the imposed symmetry, mask and whether or not the two 3D reconstructions used were processed from a common reference. The reported resolution is shown as a black line. A curve is displayed for the half-bit criterion in addition to lines showing the 0.143 gold standard cut-off and 0.5 cut-off.

8.1 FSC [i](#)



*Reported resolution corresponds to spatial frequency of 0.305 \AA^{-1}

8.2 Resolution estimates [i](#)

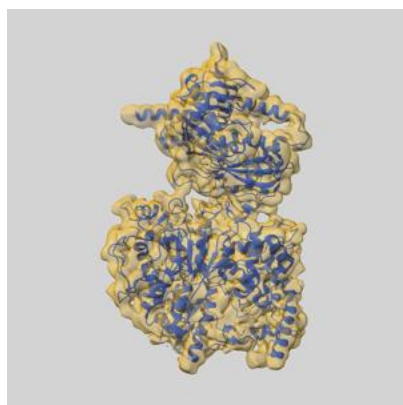
Resolution estimate (Å)	Estimation criterion (FSC cut-off)		
	0.143	0.5	Half-bit
Reported by author	3.28	-	-
Author-provided FSC curve	-	-	-
Unmasked-calculated*	4.02	4.49	4.08

*Resolution estimate based on FSC curve calculated by comparison of deposited half-maps. The value from deposited half-maps intersecting FSC 0.143 CUT-OFF 4.02 differs from the reported value 3.28 by more than 10 %

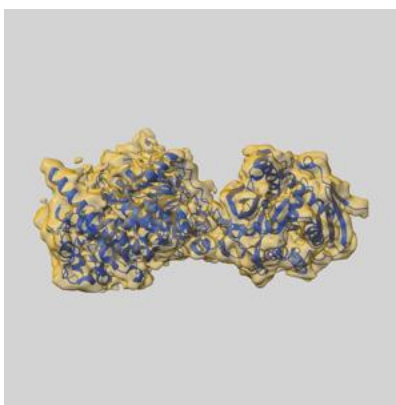
9 Map-model fit [i](#)

This section contains information regarding the fit between EMDB map EMD-50048 and PDB model 9EXS. Per-residue inclusion information can be found in [section 3](#) on [page 4](#).

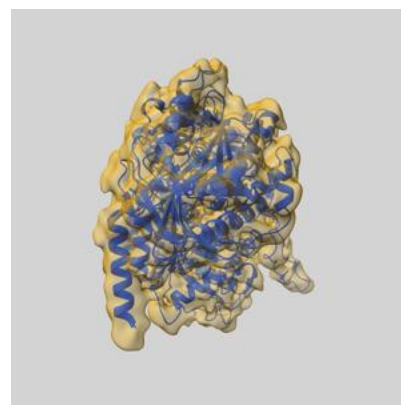
9.1 Map-model overlay [i](#)



X



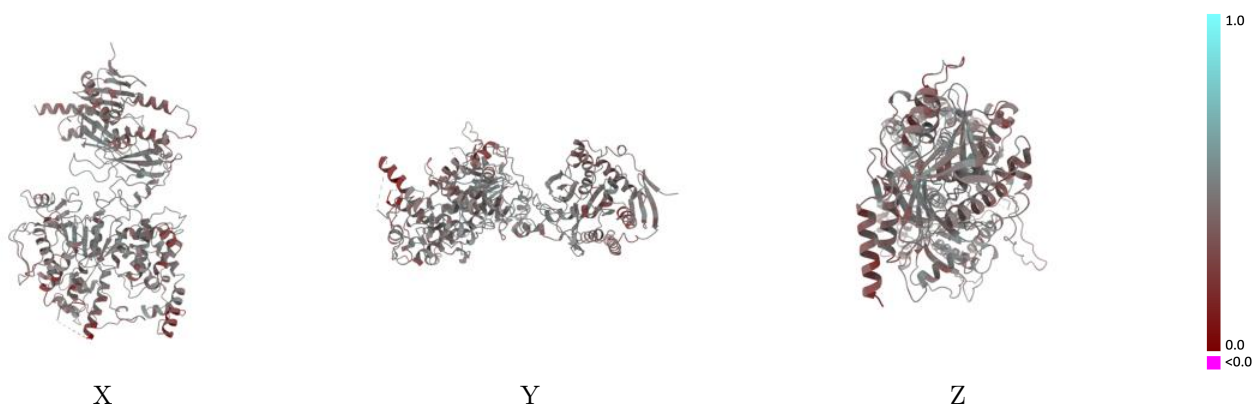
Y



Z

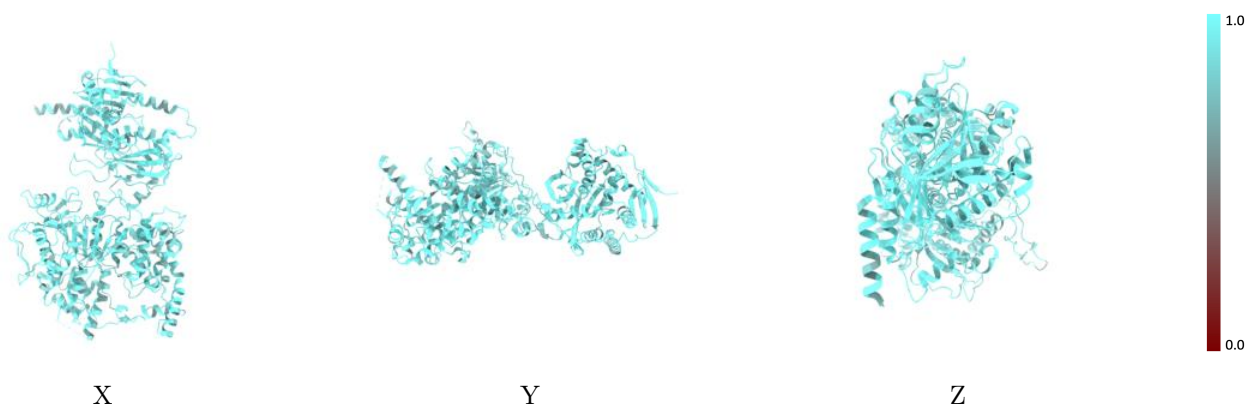
The images above show the 3D surface view of the map at the recommended contour level 0.0577 at 50% transparency in yellow overlaid with a ribbon representation of the model coloured in blue. These images allow for the visual assessment of the quality of fit between the atomic model and the map.

9.2 Q-score mapped to coordinate model [i](#)



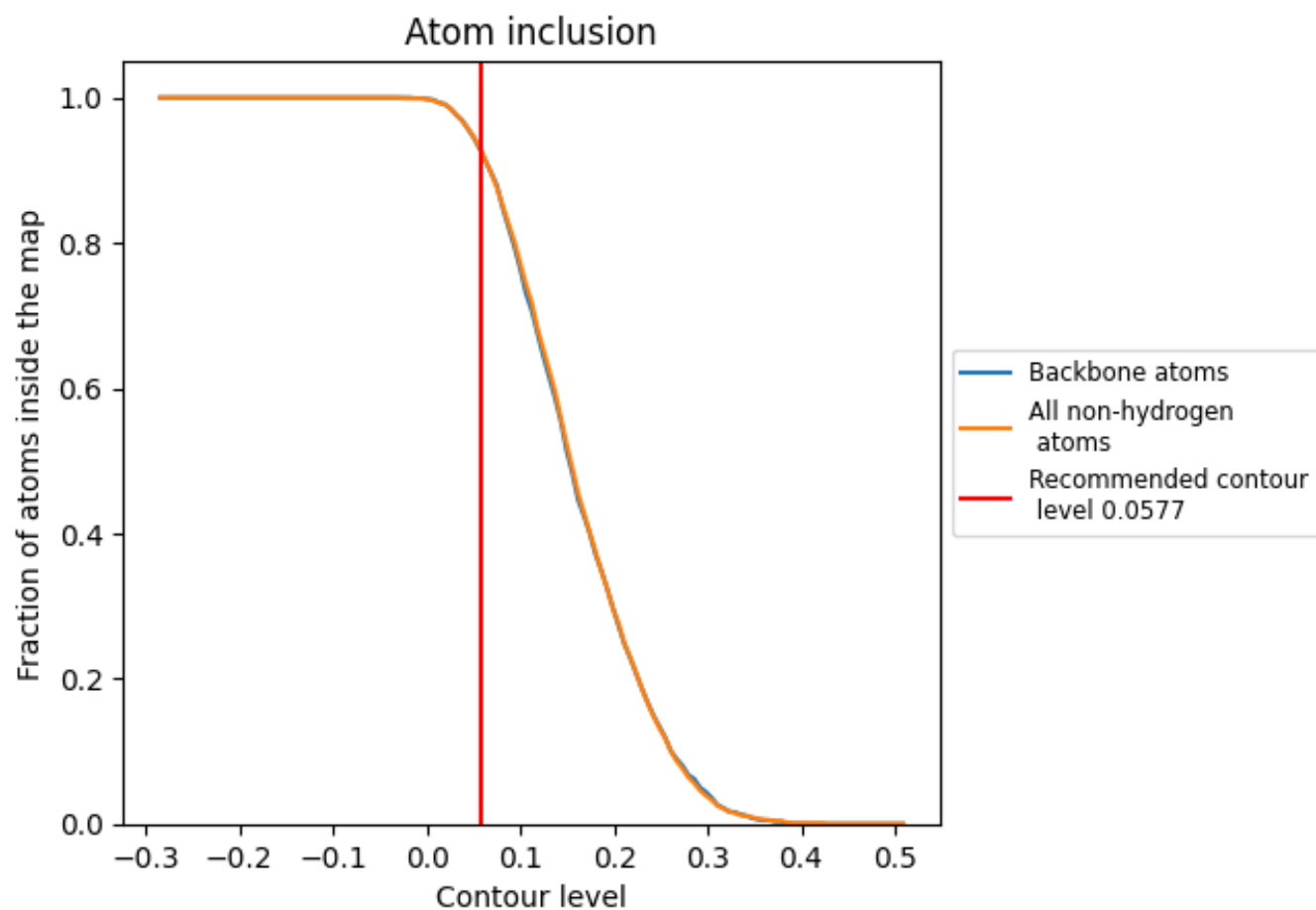
The images above show the model with each residue coloured according to its Q-score. This shows their resolvability in the map with higher Q-score values reflecting better resolvability. Please note: Q-score is calculating the resolvability of atoms, and thus high values are only expected at resolutions at which atoms can be resolved. Low Q-score values may therefore be expected for many entries.

9.3 Atom inclusion mapped to coordinate model [i](#)



The images above show the model with each residue coloured according to its atom inclusion. This shows to what extent they are inside the map at the recommended contour level (0.0577).

9.4 Atom inclusion [i](#)



At the recommended contour level, 93% of all backbone atoms, 93% of all non-hydrogen atoms, are inside the map.

9.5 Map-model fit summary ⓘ

The table lists the average atom inclusion at the recommended contour level (0.0577) and Q-score for the entire model and for each chain.

Chain	Atom inclusion	Q-score
All	<div></div> 0.9290	<div></div> 0.4300
A	<div></div> 0.9430	<div></div> 0.4280
B	<div></div> 0.9300	<div></div> 0.4320

