



Full wwPDB X-ray Structure Validation Report ⓘ

Jun 12, 2024 – 08:57 AM EDT

PDB ID : 2EXM
Title : Human CDK2 in complex with isopentenyladenine
Authors : Schulze-Gahmen, U.
Deposited on : 2005-11-08
Resolution : 1.80 Å(reported)

This is a Full wwPDB X-ray Structure Validation Report for a publicly released PDB entry.

We welcome your comments at validation@mail.wwpdb.org

A user guide is available at

<https://www.wwpdb.org/validation/2017/XrayValidationReportHelp>

with specific help available everywhere you see the ⓘ symbol.

The types of validation reports are described at

<http://www.wwpdb.org/validation/2017/FAQs#types>.

The following versions of software and data (see [references ⓘ](#)) were used in the production of this report:

MolProbity : 4.02b-467
Mogul : 2022.3.0, CSD as543be (2022)
Xtriage (Phenix) : **NOT EXECUTED**
EDS : **NOT EXECUTED**
Percentile statistics : 20191225.v01 (using entries in the PDB archive December 25th 2019)
Ideal geometry (proteins) : Engh & Huber (2001)
Ideal geometry (DNA, RNA) : Parkinson et al. (1996)
Validation Pipeline (wwPDB-VP) : 2.36.2

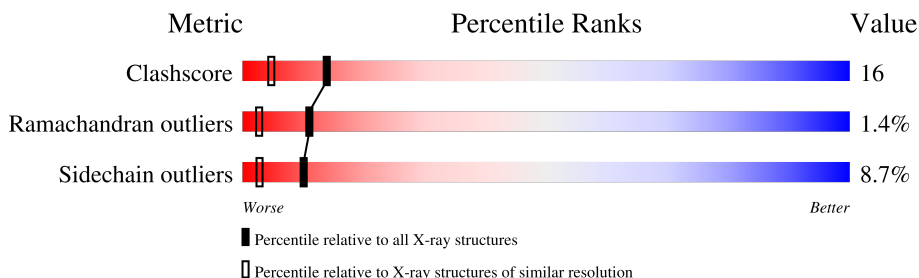
1 Overall quality at a glance

The following experimental techniques were used to determine the structure:

X-RAY DIFFRACTION

The reported resolution of this entry is 1.80 Å.

Percentile scores (ranging between 0-100) for global validation metrics of the entry are shown in the following graphic. The table shows the number of entries on which the scores are based.



Metric	Whole archive (#Entries)	Similar resolution (#Entries, resolution range(Å))
Clashscore	141614	6793 (1.80-1.80)
Ramachandran outliers	138981	6697 (1.80-1.80)
Sidechain outliers	138945	6696 (1.80-1.80)

The table below summarises the geometric issues observed across the polymeric chains and their fit to the electron density. The red, orange, yellow and green segments of the lower bar indicate the fraction of residues that contain outliers for ≥ 3 , 2, 1 and 0 types of geometric quality criteria respectively. A grey segment represents the fraction of residues that are not modelled. The numeric value for each fraction is indicated below the corresponding segment, with a dot representing fractions $\leq 5\%$.

Note EDS was not executed.

Mol	Chain	Length	Quality of chain
1	A	298	 68% 29% •

2 Entry composition [i](#)

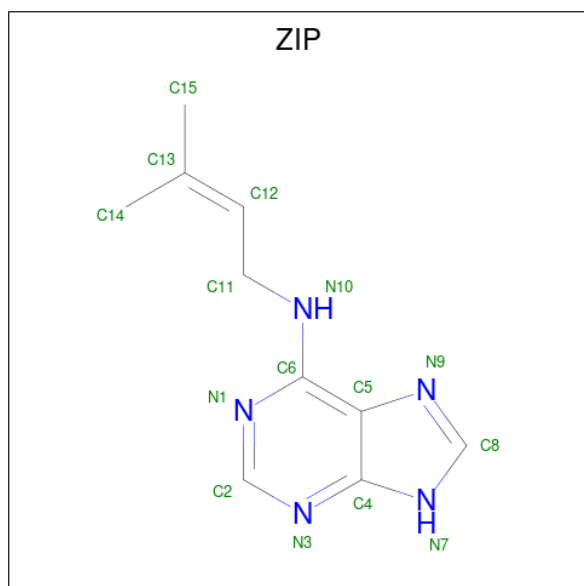
There are 3 unique types of molecules in this entry. The entry contains 2512 atoms, of which 0 are hydrogens and 0 are deuteriums.

In the tables below, the ZeroOcc column contains the number of atoms modelled with zero occupancy, the AltConf column contains the number of residues with at least one atom in alternate conformation and the Trace column contains the number of residues modelled with at most 2 atoms.

- Molecule 1 is a protein called Cell division protein kinase 2.

Mol	Chain	Residues	Atoms					ZeroOcc	AltConf	Trace
1	A	298	Total	C	N	O	S	0	0	0
			2398	1559	408	423	8			

- Molecule 2 is N-(3-METHYLBUT-2-EN-1-YL)-9H-PURIN-6-AMINE (three-letter code: ZIP) (formula: C₁₀H₁₃N₅).



Mol	Chain	Residues	Atoms			ZeroOcc	AltConf
2	A	1	Total	C	N	0	0
			15	10	5		

- Molecule 3 is water.

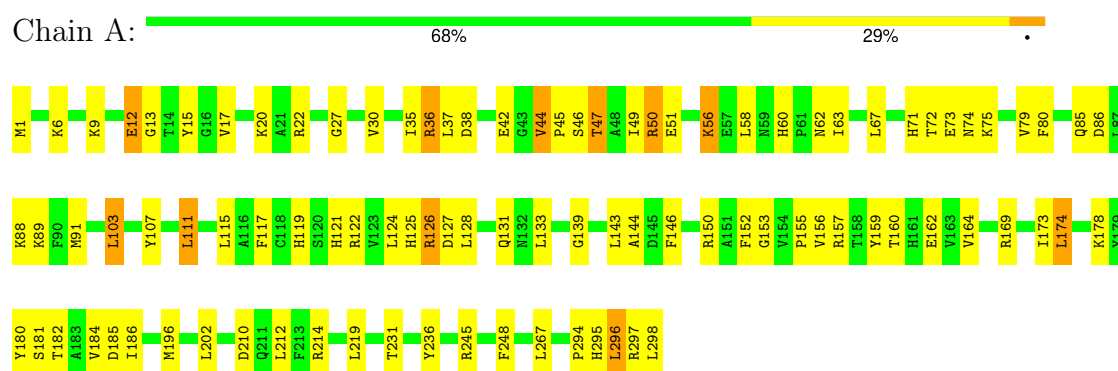
Mol	Chain	Residues	Atoms		ZeroOcc	AltConf
3	A	99	Total	O	0	0
			99	99		

3 Residue-property plots

These plots are drawn for all protein, RNA, DNA and oligosaccharide chains in the entry. The first graphic for a chain summarises the proportions of the various outlier classes displayed in the second graphic. The second graphic shows the sequence view annotated by issues in geometry. Residues are color-coded according to the number of geometric quality criteria for which they contain at least one outlier: green = 0, yellow = 1, orange = 2 and red = 3 or more. Stretches of 2 or more consecutive residues without any outlier are shown as a green connector. Residues present in the sample, but not in the model, are shown in grey.

Note EDS was not executed.

- Molecule 1: Cell division protein kinase 2



4 Data and refinement statistics

Xtriage (Phenix) and EDS were not executed - this section is therefore incomplete.

Property	Value	Source
Space group	P 21 21 21	Depositor
Cell constants a, b, c, α , β , γ	73.25Å 72.51Å 54.03Å 90.00° 90.00° 90.00°	Depositor
Resolution (Å)	8.00 – 1.80	Depositor
% Data completeness (in resolution range)	(Not available) (8.00-1.80)	Depositor
R_{merge}	(Not available)	Depositor
R_{sym}	0.08	Depositor
Refinement program	X-PLOR 3.1	Depositor
R, R_{free}	0.200 , 0.270	Depositor
Estimated twinning fraction	No twinning to report.	Xtriage
Total number of atoms	2512	wwPDB-VP
Average B, all atoms (Å ²)	32.0	wwPDB-VP

5 Model quality

5.1 Standard geometry

Bond lengths and bond angles in the following residue types are not validated in this section: ZIP

The Z score for a bond length (or angle) is the number of standard deviations the observed value is removed from the expected value. A bond length (or angle) with $|Z| > 5$ is considered an outlier worth inspection. RMSZ is the root-mean-square of all Z scores of the bond lengths (or angles).

Mol	Chain	Bond lengths		Bond angles	
		RMSZ	$\# Z > 5$	RMSZ	$\# Z > 5$
1	A	0.53	0/2460	0.77	1/3338 (0.0%)

There are no bond length outliers.

All (1) bond angle outliers are listed below:

Mol	Chain	Res	Type	Atoms	Z	Observed(°)	Ideal(°)
1	A	20	LYS	N-CA-C	-5.59	95.92	111.00

There are no chirality outliers.

There are no planarity outliers.

5.2 Too-close contacts

In the following table, the Non-H and H(model) columns list the number of non-hydrogen atoms and hydrogen atoms in the chain respectively. The H(added) column lists the number of hydrogen atoms added and optimized by MolProbity. The Clashes column lists the number of clashes within the asymmetric unit, whereas Symm-Clashes lists symmetry-related clashes.

Mol	Chain	Non-H	H(model)	H(added)	Clashes	Symm-Clashes
1	A	2398	0	2450	77	0
2	A	15	0	13	0	0
3	A	99	0	0	1	0
All	All	2512	0	2463	77	0

The all-atom clashscore is defined as the number of clashes found per 1000 atoms (including hydrogen atoms). The all-atom clashscore for this structure is 16.

All (77) close contacts within the same asymmetric unit are listed below, sorted by their clash magnitude.

Atom-1	Atom-2	Interatomic distance (Å)	Clash overlap (Å)
1:A:72:THR:HG22	1:A:73:GLU:HG3	1.62	0.81
1:A:46:SER:HA	1:A:49:ILE:HD12	1.59	0.81
1:A:46:SER:O	1:A:50:ARG:HD3	1.82	0.78
1:A:156:VAL:HA	1:A:164:VAL:HB	1.68	0.74
1:A:169:ARG:HG2	1:A:174:LEU:HD13	1.74	0.70
1:A:47:THR:O	1:A:51:GLU:HG2	1.96	0.65
1:A:51:GLU:HB3	1:A:150:ARG:NH2	2.15	0.62
1:A:124:LEU:CD2	1:A:182:THR:HA	2.29	0.62
1:A:71:HIS:HA	1:A:75:LYS:O	2.00	0.62
1:A:157:ARG:HA	1:A:162:GLU:O	2.00	0.62
1:A:58:LEU:HG	1:A:117:PHE:CE1	2.35	0.61
1:A:125:HIS:HE1	1:A:144:ALA:O	1.82	0.61
1:A:36:ARG:HH22	1:A:45:PRO:HD2	1.65	0.61
1:A:71:HIS:NE2	1:A:74:ASN:HA	2.16	0.61
1:A:126:ARG:HH12	1:A:173:ILE:HD13	1.65	0.60
1:A:37:LEU:HD23	1:A:159:TYR:HB2	1.82	0.60
1:A:124:LEU:HD21	1:A:182:THR:HG22	1.84	0.58
1:A:9:LYS:HE2	1:A:17:VAL:HG11	1.86	0.58
1:A:60:HIS:HD2	1:A:62:ASN:H	1.52	0.58
1:A:30:VAL:HG21	1:A:79:VAL:HG12	1.86	0.57
1:A:119:HIS:HD2	3:A:813:HOH:O	1.88	0.56
1:A:125:HIS:HD2	1:A:127:ASP:H	1.52	0.56
1:A:139:GLY:HA2	1:A:294:PRO:HD3	1.88	0.56
1:A:126:ARG:HH12	1:A:173:ILE:CD1	2.18	0.56
1:A:174:LEU:HB3	1:A:212:LEU:HD13	1.88	0.55
1:A:9:LYS:HD3	1:A:12:GLU:OE2	2.06	0.55
1:A:35:ILE:HG22	1:A:36:ARG:HG2	1.90	0.54
1:A:124:LEU:HD21	1:A:182:THR:HA	1.89	0.54
1:A:245:ARG:NH1	1:A:248:PHE:HE1	2.07	0.53
1:A:128:LEU:HD21	1:A:143:LEU:CD2	2.39	0.53
1:A:58:LEU:HG	1:A:117:PHE:HE1	1.73	0.52
1:A:124:LEU:HD22	1:A:182:THR:HA	1.92	0.52
1:A:88:LYS:HD3	1:A:131:GLN:NE2	2.25	0.51
1:A:160:THR:HB	1:A:162:GLU:CD	2.30	0.51
1:A:295:HIS:O	1:A:295:HIS:ND1	2.44	0.51
1:A:30:VAL:CG2	1:A:79:VAL:HG12	2.41	0.50
1:A:85:GLN:HG3	1:A:89:LYS:HE2	1.95	0.48
1:A:119:HIS:HE1	1:A:185:ASP:OD2	1.96	0.48
1:A:30:VAL:HG22	1:A:80:PHE:O	2.14	0.48
1:A:159:TYR:CD1	1:A:159:TYR:N	2.82	0.48
1:A:15:TYR:CE2	1:A:152:PHE:HB2	2.48	0.48
1:A:125:HIS:CE1	1:A:144:ALA:O	2.66	0.47

Continued on next page...

Continued from previous page...

Atom-1	Atom-2	Interatomic distance (Å)	Clash overlap (Å)
1:A:210:ASP:O	1:A:214:ARG:HG3	2.13	0.47
1:A:296:LEU:HD12	1:A:298:LEU:HD21	1.97	0.47
1:A:156:VAL:HG13	1:A:157:ARG:N	2.30	0.46
1:A:125:HIS:CD2	1:A:127:ASP:H	2.31	0.46
1:A:128:LEU:HD21	1:A:143:LEU:HD22	1.97	0.46
1:A:159:TYR:H	1:A:159:TYR:HD1	1.63	0.46
1:A:56:LYS:HE3	1:A:56:LYS:HB2	1.53	0.46
1:A:86:ASP:OD2	1:A:88:LYS:HB3	2.16	0.46
1:A:15:TYR:O	1:A:36:ARG:N	2.49	0.46
1:A:124:LEU:CD2	1:A:182:THR:HG22	2.44	0.45
1:A:37:LEU:HB3	1:A:159:TYR:CB	2.46	0.45
1:A:117:PHE:CE2	1:A:121:HIS:HE1	2.34	0.45
1:A:30:VAL:HG21	1:A:79:VAL:CG1	2.47	0.44
1:A:91:MET:HE3	1:A:196:MET:HA	2.00	0.44
1:A:181:SER:O	1:A:184:VAL:HG22	2.17	0.43
1:A:36:ARG:HH21	1:A:44:VAL:HG13	1.83	0.43
1:A:103:LEU:HD23	1:A:103:LEU:HA	1.87	0.43
1:A:117:PHE:CE2	1:A:121:HIS:CE1	3.07	0.43
1:A:36:ARG:NH2	1:A:45:PRO:HD2	2.33	0.43
1:A:157:ARG:HB2	1:A:157:ARG:NH1	2.33	0.43
1:A:22:ARG:NH1	1:A:27:GLY:O	2.52	0.43
1:A:156:VAL:HG13	1:A:157:ARG:H	1.83	0.43
1:A:51:GLU:HB3	1:A:150:ARG:HH22	1.82	0.43
1:A:124:LEU:HD21	1:A:182:THR:CG2	2.47	0.43
1:A:126:ARG:HH11	1:A:126:ARG:HB2	1.83	0.43
1:A:107:TYR:O	1:A:111:LEU:HD22	2.19	0.43
1:A:126:ARG:HB2	1:A:126:ARG:NH1	2.34	0.42
1:A:13:GLY:O	1:A:159:TYR:HE1	2.02	0.42
1:A:60:HIS:CD2	1:A:62:ASN:H	2.34	0.42
1:A:60:HIS:HB3	1:A:63:ILE:HG12	2.02	0.42
1:A:60:HIS:HB3	1:A:63:ILE:CG1	2.51	0.41
1:A:71:HIS:HD2	1:A:75:LYS:O	2.04	0.41
1:A:186:ILE:HD12	1:A:186:ILE:N	2.36	0.41
1:A:37:LEU:HG	1:A:38:ASP:CG	2.41	0.40
1:A:231:THR:HA	1:A:236:TYR:CD2	2.56	0.40

There are no symmetry-related clashes.

5.3 Torsion angles

5.3.1 Protein backbone

In the following table, the Percentiles column shows the percent Ramachandran outliers of the chain as a percentile score with respect to all X-ray entries followed by that with respect to entries of similar resolution.

The Analysed column shows the number of residues for which the backbone conformation was analysed, and the total number of residues.

Mol	Chain	Analysed	Favoured	Allowed	Outliers	Percentiles
1	A	296/298 (99%)	283 (96%)	9 (3%)	4 (1%)	11 3

All (4) Ramachandran outliers are listed below:

Mol	Chain	Res	Type
1	A	36	ARG
1	A	42	GLU
1	A	153	GLY
1	A	44	VAL

5.3.2 Protein sidechains

In the following table, the Percentiles column shows the percent sidechain outliers of the chain as a percentile score with respect to all X-ray entries followed by that with respect to entries of similar resolution.

The Analysed column shows the number of residues for which the sidechain conformation was analysed, and the total number of residues.

Mol	Chain	Analysed	Rotameric	Outliers	Percentiles
1	A	263/263 (100%)	240 (91%)	23 (9%)	10 3

All (23) residues with a non-rotameric sidechain are listed below:

Mol	Chain	Res	Type
1	A	1	MET
1	A	6	LYS
1	A	12	GLU
1	A	47	THR
1	A	50	ARG
1	A	56	LYS
1	A	67	LEU

Continued on next page...

Continued from previous page...

Mol	Chain	Res	Type
1	A	103	LEU
1	A	111	LEU
1	A	115	LEU
1	A	122	ARG
1	A	126	ARG
1	A	133	LEU
1	A	146	PHE
1	A	155	PRO
1	A	174	LEU
1	A	178	LYS
1	A	180	TYR
1	A	202	LEU
1	A	219	LEU
1	A	267	LEU
1	A	296	LEU
1	A	297	ARG

Sometimes sidechains can be flipped to improve hydrogen bonding and reduce clashes. All (4) such sidechains are listed below:

Mol	Chain	Res	Type
1	A	59	ASN
1	A	60	HIS
1	A	119	HIS
1	A	125	HIS

5.3.3 RNA ⓘ

There are no RNA molecules in this entry.

5.4 Non-standard residues in protein, DNA, RNA chains ⓘ

There are no non-standard protein/DNA/RNA residues in this entry.

5.5 Carbohydrates ⓘ

There are no monosaccharides in this entry.

5.6 Ligand geometry

1 ligand is modelled in this entry.

In the following table, the Counts columns list the number of bonds (or angles) for which Mogul statistics could be retrieved, the number of bonds (or angles) that are observed in the model and the number of bonds (or angles) that are defined in the Chemical Component Dictionary. The Link column lists molecule types, if any, to which the group is linked. The Z score for a bond length (or angle) is the number of standard deviations the observed value is removed from the expected value. A bond length (or angle) with $|Z| > 2$ is considered an outlier worth inspection. RMSZ is the root-mean-square of all Z scores of the bond lengths (or angles).

Mol	Type	Chain	Res	Link	Bond lengths			Bond angles		
					Counts	RMSZ	# Z > 2	Counts	RMSZ	# Z > 2
2	ZIP	A	400	-	13,16,16	2.32	3 (23%)	9,21,21	4.13	5 (55%)

In the following table, the Chirals column lists the number of chiral outliers, the number of chiral centers analysed, the number of these observed in the model and the number defined in the Chemical Component Dictionary. Similar counts are reported in the Torsion and Rings columns. '-' means no outliers of that kind were identified.

Mol	Type	Chain	Res	Link	Chirals	Torsions	Rings
2	ZIP	A	400	-	-	3/6/6/6	0/2/2/2

All (3) bond length outliers are listed below:

Mol	Chain	Res	Type	Atoms	Z	Observed(Å)	Ideal(Å)
2	A	400	ZIP	C6-N10	5.91	1.44	1.34
2	A	400	ZIP	C4-N3	4.81	1.44	1.37
2	A	400	ZIP	C2-N1	-2.36	1.29	1.33

All (5) bond angle outliers are listed below:

Mol	Chain	Res	Type	Atoms	Z	Observed(°)	Ideal(°)
2	A	400	ZIP	C2-N1-C6	10.90	125.06	116.60
2	A	400	ZIP	N3-C2-N1	-3.87	123.42	128.67
2	A	400	ZIP	C11-C12-C13	2.40	131.31	127.01
2	A	400	ZIP	C6-C5-C4	2.35	120.16	117.68
2	A	400	ZIP	C12-C11-N10	2.12	122.41	113.09

There are no chirality outliers.

All (3) torsion outliers are listed below:

Mol	Chain	Res	Type	Atoms
2	A	400	ZIP	C11-C12-C13-C14
2	A	400	ZIP	C11-C12-C13-C15
2	A	400	ZIP	N10-C11-C12-C13

There are no ring outliers.

No monomer is involved in short contacts.

5.7 Other polymers [i](#)

There are no such residues in this entry.

5.8 Polymer linkage issues [i](#)

There are no chain breaks in this entry.

6 Fit of model and data

6.1 Protein, DNA and RNA chains

EDS was not executed - this section is therefore empty.

6.2 Non-standard residues in protein, DNA, RNA chains

EDS was not executed - this section is therefore empty.

6.3 Carbohydrates

EDS was not executed - this section is therefore empty.

6.4 Ligands

EDS was not executed - this section is therefore empty.

6.5 Other polymers

EDS was not executed - this section is therefore empty.