



Full wwPDB EM Validation Report ⓘ

May 2, 2026 – 02:42 PM EDT

PDB ID : 9EG1 / pdb_00009eg1
EMDB ID : EMD-47983
Title : COP9 signalosome deneddylation complex with cullin-5
Authors : Shi, H.; Zheng, N.
Deposited on : 2024-11-20
Resolution : 3.52 Å(reported)
Based on initial model : 4D10

This is a Full wwPDB EM Validation Report for a publicly released PDB entry.

We welcome your comments at validation@mail.wwpdb.org

A user guide is available at

<https://www.wwpdb.org/validation/2017/EMValidationReportHelp>
with specific help available everywhere you see the ⓘ symbol.

The types of validation reports are described at

<http://www.wwpdb.org/validation/2017/FAQs#types>.

The following versions of software and data (see [references ⓘ](#)) were used in the production of this report:

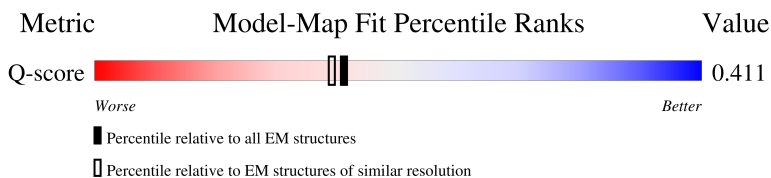
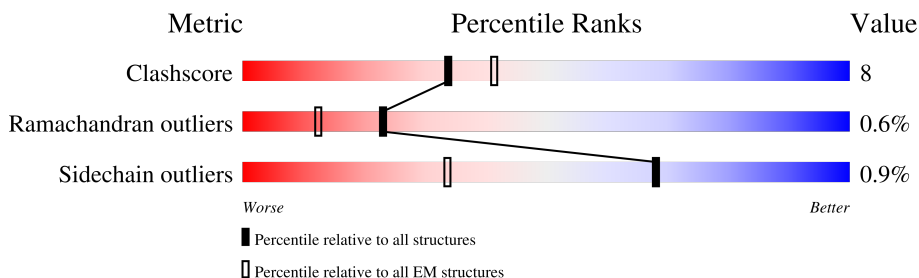
EMDB validation analysis : 0.0.1.dev132
MolProbity : 4-5-2 with Phenix2.0
Percentile statistics : 20250101.v01 (using entries in the PDB archive January 1st 2025)
EM percentile statistics : 202505.v01 (Using data in the EMDB archive up until May 2025)
MapQ : 1.9.13
Ideal geometry (proteins) : Engh & Huber (2001)
Ideal geometry (DNA, RNA) : Parkinson et al. (1996)
Validation Pipeline (wwPDB-VP) : 2.49

1 Overall quality at a glance

The following experimental techniques were used to determine the structure:
ELECTRON MICROSCOPY

The reported resolution of this entry is 3.52 Å.

Percentile scores (ranging between 0-100) for global validation metrics of the entry are shown in the following graphic. The table shows the number of entries on which the scores are based.



Metric	Whole archive (#Entries)	EM structures (#Entries)	Similar EM resolution (#Entries, resolution range(Å))
Clashscore	229148	23984	-
Ramachandran outliers	224038	23583	-
Sidechain outliers	223484	23102	-
Q-score	-	25397	13017 (3.02 - 4.02)

The table below summarises the geometric issues observed across the polymeric chains and their fit to the map. The red, orange, yellow and green segments of the bar indicate the fraction of residues that contain outliers for ≥ 3 , 2, 1 and 0 types of geometric quality criteria respectively. A grey segment represents the fraction of residues that are not modelled. The numeric value for each fraction is indicated below the corresponding segment, with a dot representing fractions $\leq 5\%$. The upper red bar (where present) indicates the fraction of residues that have poor fit to the EM map (all-atom inclusion $< 40\%$). The numeric value is given above the bar.

Mol	Chain	Length	Quality of chain
1	B	443	
2	D	406	
3	E	334	
4	F	327	

Continued on next page...

Continued from previous page...

Mol	Chain	Length	Quality of chain
5	G	264	<div><div></div><div>70%11%19%</div></div>
6	H	209	<div><div></div><div>66%16%18%</div></div>
7	J	780	<div><div></div><div>43%53%</div></div>
8	K	113	<div><div></div><div>57%19%24%</div></div>
9	A	491	<div><div></div><div>62%20%18%</div></div>
10	C	423	<div><div></div><div>81%14%</div></div>
11	I	81	<div><div></div><div>10%59%32%6%</div></div>

2 Entry composition [i](#)

There are 12 unique types of molecules in this entry. The entry contains 23752 atoms, of which 0 are hydrogens and 0 are deuteriums.

In the tables below, the AltConf column contains the number of residues with at least one atom in alternate conformation and the Trace column contains the number of residues modelled with at most 2 atoms.

- Molecule 1 is a protein called COP9 signalosome complex subunit 2.

Mol	Chain	Residues	Atoms					AltConf	Trace
1	B	373	Total	C	N	O	S	0	0
			3062	1951	530	566	15		

- Molecule 2 is a protein called COP9 signalosome complex subunit 4.

Mol	Chain	Residues	Atoms					AltConf	Trace
2	D	405	Total	C	N	O	S	0	0
			3241	2042	564	619	16		

- Molecule 3 is a protein called COP9 signalosome complex subunit 5.

Mol	Chain	Residues	Atoms					AltConf	Trace
3	E	291	Total	C	N	O	S	0	0
			2313	1478	386	435	14		

There are 2 discrepancies between the modelled and reference sequences:

Chain	Residue	Modelled	Actual	Comment	Reference
E	76	ALA	GLU	engineered mutation	UNP Q92905
E	151	ASN	ASP	engineered mutation	UNP Q92905

- Molecule 4 is a protein called COP9 signalosome complex subunit 6.

Mol	Chain	Residues	Atoms					AltConf	Trace
4	F	280	Total	C	N	O	S	0	0
			2229	1422	371	423	13		

- Molecule 5 is a protein called COP9 signalosome complex subunit 7b.

Mol	Chain	Residues	Atoms					AltConf	Trace
5	G	213	Total	C	N	O	S	0	0
			1687	1070	287	324	6		

- Molecule 6 is a protein called COP9 signalosome complex subunit 8.

Mol	Chain	Residues	Atoms					AltConf	Trace
6	H	172	Total	C	N	O	S	0	0
			1374	880	239	251	4		

- Molecule 7 is a protein called Cullin-5.

Mol	Chain	Residues	Atoms					AltConf	Trace
7	J	367	Total	C	N	O	S	0	0
			2101	1286	406	404	5		

- Molecule 8 is a protein called RING-box protein 2.

Mol	Chain	Residues	Atoms					AltConf	Trace
8	K	86	Total	C	N	O	S	0	0
			698	434	127	122	15		

- Molecule 9 is a protein called COP9 signalosome complex subunit 1.

Mol	Chain	Residues	Atoms					AltConf	Trace
9	A	404	Total	C	N	O	S	0	0
			3229	2047	561	599	22		

- Molecule 10 is a protein called COP9 signalosome complex subunit 3.

Mol	Chain	Residues	Atoms					AltConf	Trace
10	C	404	Total	C	N	O	S	0	0
			3216	2048	540	602	26		

- Molecule 11 is a protein called NEDD8.

Mol	Chain	Residues	Atoms					AltConf	Trace
11	I	76	Total	C	N	O	S	0	0
			599	378	104	115	2		

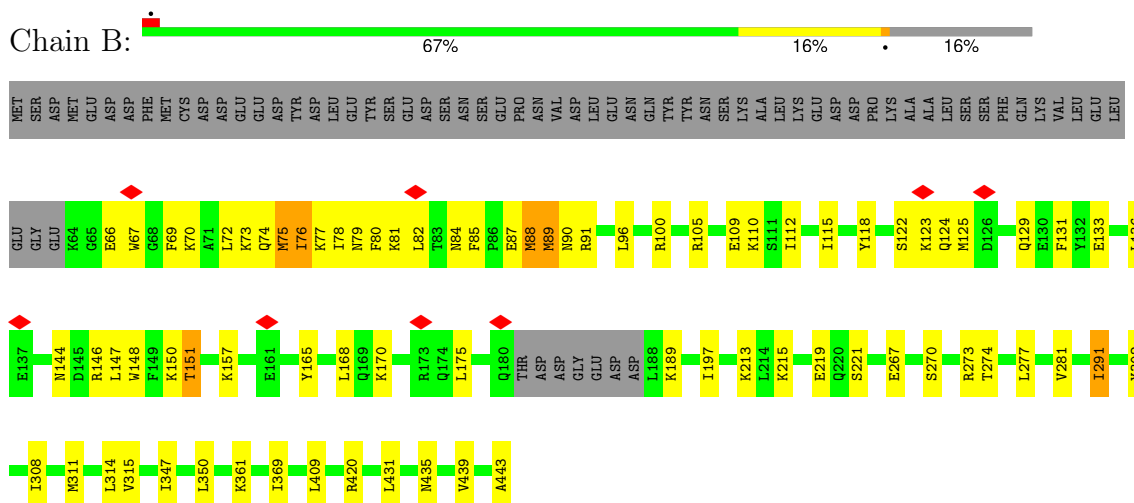
- Molecule 12 is ZINC ION (CCD ID: ZN) (formula: Zn) (labeled as "Ligand of Interest" by depositor).

Mol	Chain	Residues	Atoms		AltConf
12	K	3	Total	Zn	0
			3	3	

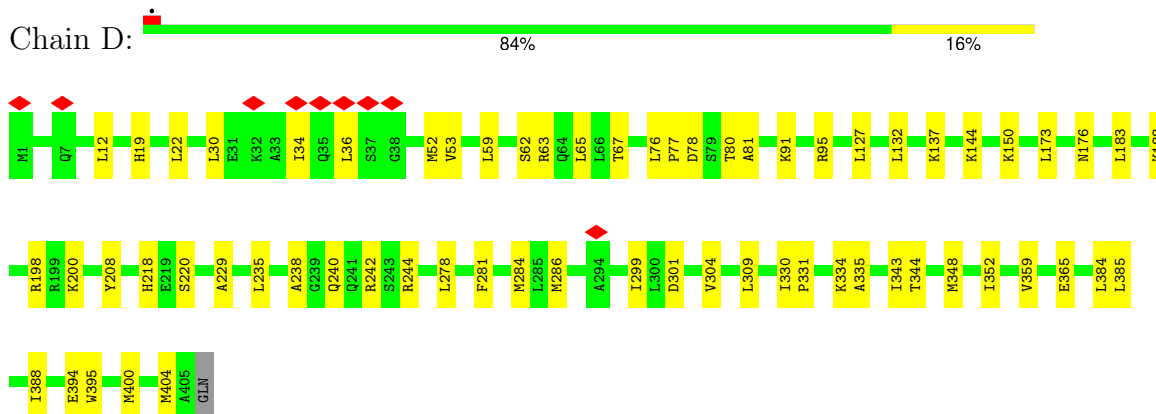
3 Residue-property plots [i](#)

These plots are drawn for all protein, RNA, DNA and oligosaccharide chains in the entry. The first graphic for a chain summarises the proportions of the various outlier classes displayed in the second graphic. The second graphic shows the sequence view annotated by issues in geometry and atom inclusion in map density. Residues are color-coded according to the number of geometric quality criteria for which they contain at least one outlier: green = 0, yellow = 1, orange = 2 and red = 3 or more. A red diamond above a residue indicates a poor fit to the EM map for this residue (all-atom inclusion < 40%). Stretches of 2 or more consecutive residues without any outlier are shown as a green connector. Residues present in the sample, but not in the model, are shown in grey.

• Molecule 1: COP9 signalosome complex subunit 2

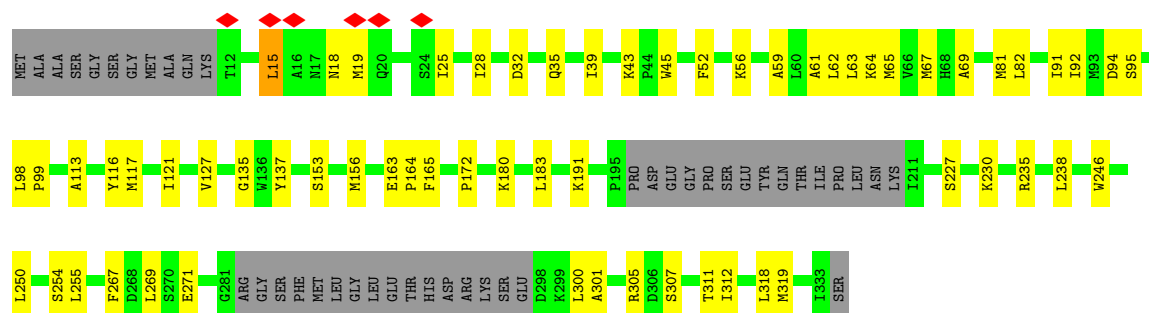


• Molecule 2: COP9 signalosome complex subunit 4

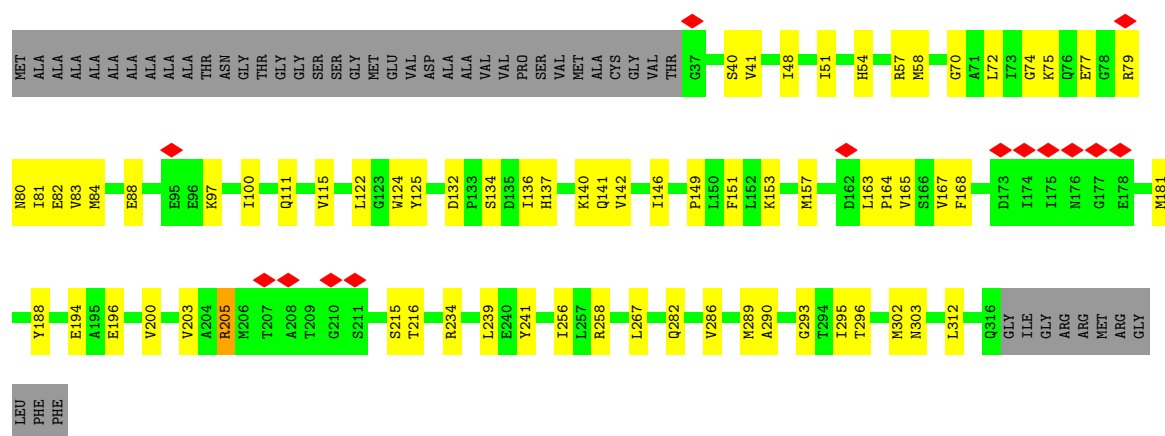


• Molecule 3: COP9 signalosome complex subunit 5

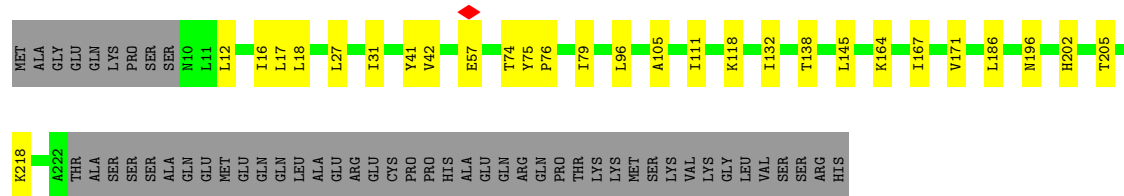




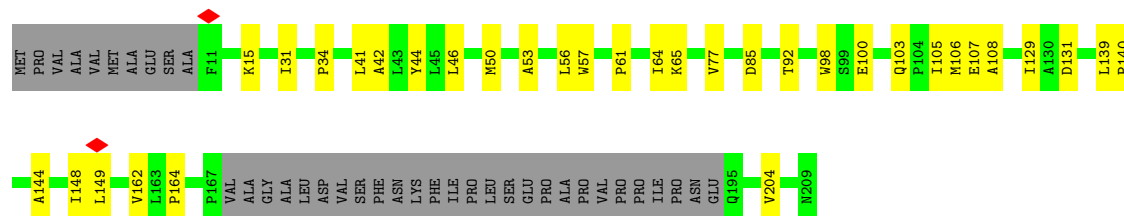
- Molecule 4: COP9 signalosome complex subunit 6



- Molecule 5: COP9 signalosome complex subunit 7b



- Molecule 6: COP9 signalosome complex subunit 8



- Molecule 7: Cullin-5

Opinion	Percentage
Doing a good job	43%
Doing a bad job	53%

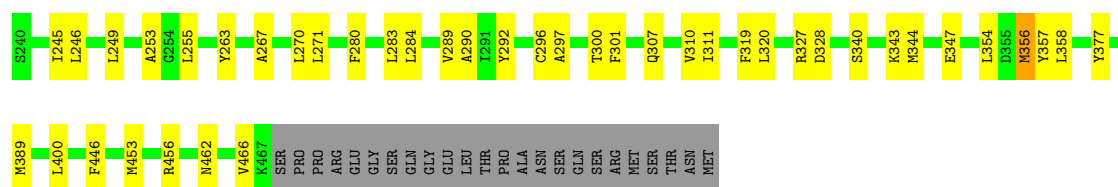


Frequency	Percentage
Daily	57%
Sometimes	19%
Never	24%



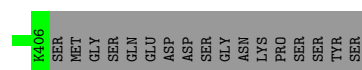
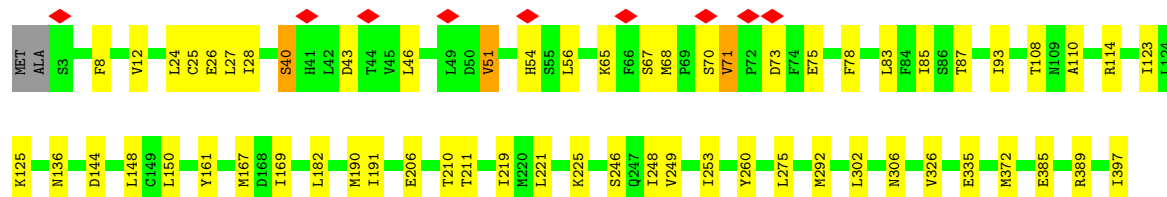
Frequency	Percentage
Daily	62%
Weekly	20%
Monthly	18%
Other	0%





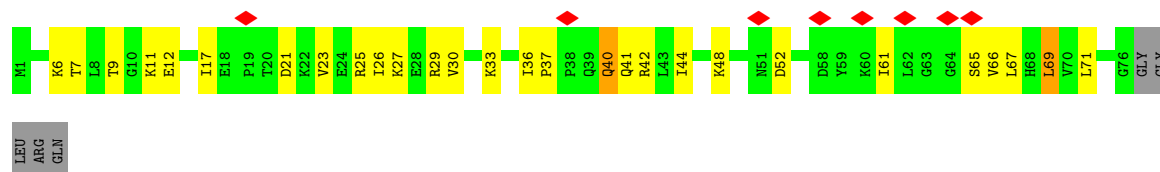
- Molecule 10: COP9 signalosome complex subunit 3

Chain C: 81% 14% . .



- Molecule 11: NEDD8

Chain I: 10% 59% 32% 6%



4 Experimental information

Property	Value	Source
EM reconstruction method	SINGLE PARTICLE	Depositor
Imposed symmetry	POINT, C1	Depositor
Number of particles used	239911	Depositor
Resolution determination method	FSC 0.143 CUT-OFF	Depositor
CTF correction method	PHASE FLIPPING AND AMPLITUDE CORRECTION	Depositor
Microscope	TFS KRIOS	Depositor
Voltage (kV)	300	Depositor
Electron dose ($e^-/\text{\AA}^2$)	60	Depositor
Minimum defocus (nm)	800	Depositor
Maximum defocus (nm)	3000	Depositor
Magnification	Not provided	
Image detector	GATAN K3 BIOQUANTUM (6k x 4k)	Depositor
Maximum map value	0.935	Depositor
Minimum map value	-0.351	Depositor
Average map value	0.005	Depositor
Map value standard deviation	0.019	Depositor
Recommended contour level	0.08	Depositor
Map size (Å)	334.0, 334.0, 334.0	wwPDB
Map dimensions	400, 400, 400	wwPDB
Map angles (°)	90.0, 90.0, 90.0	wwPDB
Pixel spacing (Å)	0.835, 0.835, 0.835	Depositor

5 Model quality

5.1 Standard geometry

Bond lengths and bond angles in the following residue types are not validated in this section: ZN

The Z score for a bond length (or angle) is the number of standard deviations the observed value is removed from the expected value. A bond length (or angle) with $|Z| > 5$ is considered an outlier worth inspection. RMSZ is the root-mean-square of all Z scores of the bond lengths (or angles).

Mol	Chain	Bond lengths		Bond angles	
		RMSZ	# Z >5	RMSZ	# Z >5
1	B	0.16	0/3115	0.44	0/4188
2	D	0.11	0/3293	0.28	0/4448
3	E	0.14	0/2361	0.41	0/3189
4	F	0.12	0/2276	0.36	0/3085
5	G	0.15	0/1707	0.35	0/2309
6	H	0.15	0/1407	0.41	0/1912
7	J	0.14	0/2107	0.43	0/2899
8	K	0.18	0/714	0.55	0/965
9	A	0.15	0/3282	0.40	0/4423
10	C	0.13	0/3275	0.37	0/4423
11	I	0.26	0/604	0.65	1/808 (0.1%)
All	All	0.14	0/24141	0.40	1/32649 (0.0%)

There are no bond length outliers.

All (1) bond angle outliers are listed below:

Mol	Chain	Res	Type	Atoms	Z	Observed(°)	Ideal(°)
11	I	40	GLN	CB-CA-C	5.27	119.40	111.18

There are no chirality outliers.

There are no planarity outliers.

5.2 Too-close contacts

In the following table, the Non-H and H(model) columns list the number of non-hydrogen atoms and hydrogen atoms in the chain respectively. The H(added) column lists the number of hydrogen atoms added and optimized by MolProbity. The Clashes column lists the number of clashes within the asymmetric unit, whereas Symm-Clashes lists symmetry-related clashes.

Mol	Chain	Non-H	H(model)	H(added)	Clashes	Symm-Clashes
1	B	3062	0	3129	63	0
2	D	3241	0	3245	45	0
3	E	2313	0	2290	50	0
4	F	2229	0	2211	51	0
5	G	1687	0	1730	19	0
6	H	1374	0	1360	21	0
7	J	2101	0	1338	21	0
8	K	698	0	659	14	0
9	A	3229	0	3273	70	0
10	C	3216	0	3238	38	0
11	I	599	0	638	23	0
12	K	3	0	0	0	0
All	All	23752	0	23111	386	0

The all-atom clashscore is defined as the number of clashes found per 1000 atoms (including hydrogen atoms). The all-atom clashscore for this structure is 8.

All (386) close contacts within the same asymmetric unit are listed below, sorted by their clash magnitude.

Atom-1	Atom-2	Interatomic distance (Å)	Clash overlap (Å)
8:K:82:HIS:HE1	8:K:102:CYS:SG	1.87	0.98
4:F:153:LYS:O	4:F:165:VAL:HA	1.62	0.97
11:I:7:THR:HG23	11:I:9:THR:H	1.48	0.77
7:J:758:GLU:HA	7:J:761:ILE:HG22	1.67	0.76
6:H:34:PRO:HG3	6:H:64:ILE:HD11	1.68	0.75
9:A:36:VAL:HG23	9:A:37:VAL:HG23	1.69	0.75
7:J:518:LYS:HA	7:J:518:LYS:HE3	1.71	0.73
4:F:41:VAL:HG21	4:F:167:VAL:HG21	1.71	0.72
7:J:741:ILE:HG22	7:J:742:LEU:HD23	1.73	0.70
4:F:302:MET:HE2	9:A:453:MET:HE3	1.72	0.70
4:F:81:ILE:HD11	4:F:122:LEU:HD13	1.75	0.69
7:J:713:LEU:HA	7:J:716:GLN:HE21	1.58	0.69
8:K:29:MET:HE3	8:K:29:MET:H	1.58	0.69
10:C:150:LEU:HD11	10:C:190:MET:HE2	1.75	0.68
8:K:109:GLN:HG2	8:K:110:ARG:HG2	1.76	0.68
7:J:723:MET:HE3	7:J:723:MET:HA	1.75	0.67
4:F:48:ILE:HA	4:F:51:ILE:HD12	1.75	0.67
2:D:52:MET:HE2	2:D:62:SER:HB2	1.76	0.67
9:A:231:ILE:HG23	9:A:232:ALA:H	1.61	0.66
9:A:134:THR:O	9:A:138:ALA:HB3	1.94	0.66
1:B:77:LYS:HE2	1:B:81:LYS:HZ1	1.61	0.66
2:D:238:ALA:HA	2:D:242:ARG:HD3	1.79	0.64

Continued on next page...

Continued from previous page...

Atom-1	Atom-2	Interatomic distance (Å)	Clash overlap (Å)
10:C:221:LEU:HG	10:C:225:LYS:HE3	1.79	0.64
3:E:61:ALA:O	3:E:65:MET:HG3	1.98	0.64
11:I:21:ASP:HB3	11:I:25:ARG:HD2	1.79	0.64
9:A:136:LYS:HZ2	9:A:137:LYS:HE2	1.63	0.63
4:F:137:HIS:HA	4:F:140:LYS:HD2	1.79	0.63
1:B:157:LYS:HD3	1:B:157:LYS:N	2.14	0.63
2:D:132:LEU:HD22	2:D:144:LYS:HG2	1.81	0.63
3:E:59:ALA:O	3:E:63:LEU:HD12	1.99	0.63
2:D:176:ASN:HD21	8:K:113:LYS:HE3	1.63	0.62
11:I:17:ILE:HG13	11:I:25:ARG:HH12	1.64	0.61
1:B:281:VAL:HG11	1:B:311:MET:HG3	1.82	0.60
3:E:67:MET:HE3	3:E:67:MET:HA	1.84	0.60
10:C:8:PHE:O	10:C:12:VAL:HG23	2.02	0.60
11:I:29:ARG:O	11:I:33:LYS:HG3	2.01	0.60
10:C:85:ILE:HG13	10:C:123:ILE:HG23	1.84	0.60
9:A:221:TYR:HA	9:A:224:LYS:HG2	1.84	0.60
2:D:240:GLN:HE22	2:D:244:ARG:HE	1.49	0.60
6:H:42:ALA:HB1	6:H:105:ILE:HG21	1.84	0.59
9:A:139:LEU:HA	9:A:142:LEU:HD12	1.84	0.59
7:J:770:GLU:CD	7:J:770:GLU:H	2.11	0.59
4:F:100:ILE:H	4:F:141:GLN:HE21	1.50	0.59
2:D:301:ASP:HA	2:D:304:VAL:HG12	1.85	0.59
11:I:44:ILE:O	11:I:67:LEU:HA	2.02	0.59
1:B:369:ILE:HG22	1:B:409:LEU:HB3	1.85	0.58
8:K:85:HIS:HB2	8:K:88:CYS:HB2	1.85	0.58
6:H:15:LYS:HD3	6:H:15:LYS:N	2.18	0.58
4:F:194:GLU:CD	4:F:194:GLU:H	2.11	0.58
9:A:90:MET:O	9:A:94:ILE:HG13	2.03	0.58
10:C:75:GLU:O	10:C:78:PHE:HB3	2.04	0.57
2:D:19:HIS:HE1	2:D:22:LEU:HB3	1.68	0.57
10:C:292:MET:HE2	10:C:292:MET:HA	1.86	0.57
1:B:273:ARG:HD2	1:B:274:THR:HG23	1.87	0.57
2:D:198:ARG:HH21	2:D:200:LYS:HE2	1.69	0.57
5:G:75:TYR:HD1	5:G:96:LEU:HD22	1.68	0.57
9:A:145:LEU:O	9:A:149:LEU:HG	2.05	0.57
2:D:278:LEU:HD11	2:D:304:VAL:HG21	1.86	0.57
9:A:222:VAL:HG11	9:A:253:ALA:HB2	1.86	0.56
1:B:85:PHE:HA	1:B:88:MET:SD	2.45	0.56
2:D:385:LEU:HD23	4:F:234:ARG:HD3	1.88	0.56
3:E:18:ASN:C	3:E:19:MET:HE2	2.30	0.56
3:E:81:MET:HE2	3:E:92:ILE:HG21	1.88	0.56

Continued on next page...

Continued from previous page...

Atom-1	Atom-2	Interatomic distance (Å)	Clash overlap (Å)
3:E:82:LEU:HB2	3:E:94:ASP:HB3	1.87	0.56
3:E:312:ILE:HD12	6:H:204:VAL:HG13	1.88	0.56
11:I:6:LYS:HE3	11:I:66:VAL:HG11	1.87	0.56
2:D:330:ILE:HG21	2:D:335:ALA:H	1.70	0.56
6:H:15:LYS:HD3	6:H:15:LYS:H	1.70	0.56
11:I:11:LYS:HE2	11:I:11:LYS:HA	1.88	0.56
1:B:110:LYS:HD2	1:B:110:LYS:O	2.05	0.56
10:C:68:MET:HE3	10:C:68:MET:C	2.31	0.56
2:D:76:LEU:HD21	2:D:80:THR:HB	1.87	0.55
1:B:165:TYR:HA	1:B:168:LEU:HD23	1.87	0.55
3:E:269:LEU:HD21	3:E:307:SER:HA	1.89	0.55
9:A:280:PHE:HD1	9:A:280:PHE:O	1.88	0.55
4:F:74:GLY:HA2	4:F:84:MET:HG2	1.89	0.55
9:A:340:SER:O	9:A:344:MET:HG3	2.07	0.55
10:C:71:VAL:HG23	10:C:73:ASP:H	1.70	0.55
1:B:431:LEU:HD21	4:F:296:THR:HB	1.89	0.55
1:B:70:LYS:HA	1:B:73:LYS:HD3	1.89	0.55
6:H:162:VAL:HG23	6:H:164:PRO:HD3	1.88	0.55
1:B:110:LYS:HD2	1:B:110:LYS:C	2.32	0.54
2:D:330:ILE:HG21	2:D:335:ALA:N	2.20	0.54
5:G:27:LEU:O	5:G:31:ILE:HG23	2.06	0.54
9:A:128:THR:HG22	9:A:132:GLU:OE2	2.07	0.54
4:F:54:HIS:NE2	4:F:88:GLU:HG3	2.22	0.54
4:F:196:GLU:O	4:F:200:VAL:HG13	2.07	0.54
1:B:125:MET:HE3	1:B:125:MET:O	2.07	0.54
4:F:167:VAL:HG12	4:F:188:TYR:HD2	1.72	0.54
1:B:123:LYS:HG3	1:B:124:GLN:HG2	1.89	0.54
3:E:64:LYS:HE3	3:E:95:SER:HB3	1.90	0.54
2:D:76:LEU:HG	2:D:77:PRO:HD2	1.88	0.54
9:A:141:LYS:HA	9:A:144:LYS:HD2	1.89	0.54
4:F:163:LEU:HD12	4:F:164:PRO:HD2	1.89	0.54
9:A:75:LEU:HD13	9:A:98:LEU:HB3	1.90	0.54
5:G:132:ILE:HG21	5:G:145:LEU:HD21	1.89	0.54
2:D:309:LEU:HG	2:D:348:MET:HE1	1.89	0.54
9:A:44:LEU:HD23	9:A:44:LEU:H	1.72	0.54
1:B:77:LYS:O	1:B:81:LYS:HG2	2.08	0.53
9:A:40:PRO:HG2	9:A:354:LEU:HD11	1.90	0.53
10:C:56:LEU:HD22	10:C:93:ILE:HD11	1.90	0.53
8:K:50:CYS:HB3	8:K:53:CYS:SG	2.47	0.53
9:A:54:LEU:HA	9:A:57:ILE:HD12	1.90	0.53
5:G:76:PRO:O	5:G:79:ILE:HB	2.09	0.53

Continued on next page...

Continued from previous page...

Atom-1	Atom-2	Interatomic distance (Å)	Clash overlap (Å)
9:A:169:GLY:HA3	9:A:185:TYR:HE1	1.73	0.53
4:F:157:MET:HE3	4:F:157:MET:HA	1.90	0.53
9:A:292:TYR:HE1	9:A:358:LEU:HD22	1.73	0.53
1:B:74:GLN:O	1:B:77:LYS:HG3	2.08	0.53
1:B:277:LEU:HD23	1:B:308:ILE:HD13	1.92	0.53
4:F:312:LEU:HD22	10:C:397:ILE:HG23	1.90	0.52
5:G:12:LEU:O	5:G:16:ILE:HB	2.09	0.52
11:I:23:VAL:O	11:I:27:LYS:HG3	2.09	0.52
11:I:40:GLN:C	11:I:42:ARG:HH12	2.18	0.52
3:E:59:ALA:HB2	4:F:203:VAL:HG21	1.91	0.52
3:E:180:LYS:HE2	3:E:180:LYS:N	2.24	0.52
9:A:142:LEU:HA	9:A:145:LEU:HG	1.91	0.52
2:D:30:LEU:O	2:D:34:ILE:HG13	2.10	0.52
7:J:759:TRP:HE3	7:J:760:LEU:HD22	1.74	0.52
6:H:100:GLU:HA	6:H:103:GLN:HB2	1.92	0.52
10:C:136:ASN:HD22	10:C:167:MET:HG2	1.75	0.52
9:A:152:TYR:CD2	9:A:160:SER:HB3	2.45	0.52
9:A:87:ASN:HB3	9:A:91:TYR:HB2	1.92	0.52
1:B:69:PHE:HA	1:B:72:LEU:HD12	1.91	0.51
3:E:113:ALA:O	3:E:117:MET:HG3	2.10	0.51
5:G:17:LEU:HD23	5:G:17:LEU:H	1.74	0.51
9:A:204:ASN:O	9:A:208:VAL:HG13	2.11	0.51
7:J:727:LYS:H	7:J:727:LYS:HD2	1.76	0.51
9:A:263:TYR:HB2	9:A:300:THR:HG21	1.91	0.51
10:C:68:MET:HE2	10:C:71:VAL:N	2.26	0.51
2:D:384:LEU:O	2:D:388:ILE:HG22	2.10	0.51
3:E:45:TRP:HE3	3:E:45:TRP:H	1.57	0.51
4:F:163:LEU:HG	4:F:165:VAL:HG22	1.92	0.51
2:D:330:ILE:HG23	2:D:334:LYS:HG2	1.92	0.51
1:B:347:ILE:HD12	1:B:350:LEU:HD12	1.93	0.51
3:E:35:GLN:O	3:E:39:ILE:HG22	2.11	0.51
2:D:173:LEU:HD21	8:K:47:CYS:HB2	1.93	0.50
3:E:300:LEU:HD23	4:F:303:ASN:HD22	1.76	0.50
4:F:54:HIS:HA	4:F:57:ARG:HH11	1.77	0.50
9:A:73:GLU:CD	9:A:73:GLU:H	2.19	0.50
9:A:377:TYR:CE1	9:A:389:MET:HG3	2.46	0.50
3:E:25:ILE:HG21	3:E:235:ARG:HH22	1.76	0.50
1:B:291:ILE:HG23	8:K:51:ALA:HB1	1.93	0.50
11:I:61:ILE:HD12	11:I:65:SER:HB2	1.92	0.50
10:C:182:LEU:HD21	10:C:211:THR:HG21	1.94	0.50
3:E:69:ALA:HB1	3:E:172:PRO:HG3	1.94	0.49

Continued on next page...

Continued from previous page...

Atom-1	Atom-2	Interatomic distance (Å)	Clash overlap (Å)
4:F:146:ILE:HG23	4:F:149:PRO:HG3	1.95	0.49
9:A:203:LEU:HD11	9:A:245:ILE:HG22	1.94	0.49
2:D:19:HIS:CE1	2:D:22:LEU:HB3	2.47	0.49
3:E:99:PRO:HD3	3:E:116:TYR:CD2	2.47	0.49
9:A:79:LEU:HA	9:A:82:VAL:HG12	1.93	0.49
1:B:72:LEU:HD22	1:B:91:ARG:NH2	2.28	0.49
2:D:343:ILE:HG22	2:D:344:THR:H	1.76	0.49
9:A:90:MET:HE1	9:A:176:GLY:HA3	1.94	0.49
1:B:215:LYS:O	1:B:219:GLU:HG2	2.12	0.49
10:C:46:LEU:HD21	10:C:54:HIS:HB3	1.95	0.49
9:A:307:GLN:HA	9:A:311:ILE:HB	1.95	0.49
9:A:320:LEU:HD13	9:A:327:ARG:HG3	1.94	0.49
1:B:67:TRP:HA	1:B:70:LYS:HB3	1.96	0.48
3:E:230:LYS:HD2	3:E:235:ARG:HA	1.94	0.48
3:E:301:ALA:O	3:E:305:ARG:HG3	2.12	0.48
9:A:271:LEU:HD21	9:A:310:VAL:HG22	1.94	0.48
2:D:400:MET:O	2:D:404:MET:HG2	2.12	0.48
4:F:151:PHE:HB3	4:F:168:PHE:HB2	1.94	0.48
10:C:167:MET:HG3	10:C:389:ARG:NH2	2.28	0.48
1:B:115:ILE:HA	1:B:118:TYR:CD2	2.48	0.48
2:D:53:VAL:HG21	2:D:91:LYS:HB3	1.95	0.48
7:J:533:ALA:HB2	8:K:40:MET:HB3	1.94	0.48
7:J:755:GLU:HA	7:J:758:GLU:OE1	2.13	0.48
9:A:188:ALA:HA	9:A:191:TYR:HD2	1.78	0.48
11:I:48:LYS:HE3	11:I:48:LYS:HA	1.94	0.48
10:C:24:LEU:O	10:C:28:ILE:HG12	2.13	0.48
2:D:218:HIS:CE1	2:D:220:SER:H	2.31	0.48
9:A:146:ASP:HA	9:A:149:LEU:HD12	1.96	0.48
1:B:66:GLU:HA	1:B:69:PHE:CE1	2.49	0.48
4:F:136:ILE:HG23	4:F:181:MET:HB3	1.94	0.48
9:A:134:THR:O	9:A:138:ALA:CB	2.60	0.48
10:C:167:MET:HG3	10:C:389:ARG:HH22	1.78	0.48
11:I:71:LEU:HD23	11:I:71:LEU:H	1.77	0.48
1:B:148:TRP:HA	1:B:151:THR:HG23	1.94	0.48
2:D:78:ASP:HA	2:D:81:ALA:HB3	1.96	0.48
3:E:19:MET:HE2	3:E:19:MET:N	2.28	0.47
5:G:74:THR:OG1	5:G:76:PRO:HD2	2.13	0.47
9:A:328:ASP:HB3	9:A:344:MET:HE1	1.96	0.47
11:I:25:ARG:HH11	11:I:26:ILE:HG22	1.78	0.47
3:E:15:LEU:HD23	5:G:196:ASN:HD22	1.79	0.47
5:G:118:LYS:HD2	5:G:118:LYS:O	2.14	0.47

Continued on next page...

Continued from previous page...

Atom-1	Atom-2	Interatomic distance (Å)	Clash overlap (Å)
9:A:79:LEU:HD13	9:A:98:LEU:HD21	1.95	0.47
1:B:112:ILE:HA	1:B:115:ILE:HD12	1.96	0.47
3:E:56:LYS:HD2	3:E:227:SER:HB3	1.96	0.47
7:J:733:GLN:O	7:J:737:GLU:HG2	2.14	0.47
10:C:385:GLU:O	10:C:389:ARG:HG2	2.15	0.47
9:A:136:LYS:NZ	9:A:137:LYS:HE2	2.30	0.47
3:E:318:LEU:HB2	4:F:286:VAL:HG11	1.96	0.47
9:A:343:LYS:O	9:A:347:GLU:HG3	2.14	0.47
1:B:87:GLU:HA	1:B:90:ASN:HD21	1.79	0.46
4:F:205:ARG:HA	4:F:205:ARG:HD3	1.64	0.46
6:H:77:VAL:HG22	6:H:92:THR:HG23	1.98	0.46
3:E:267:PHE:O	3:E:271:GLU:HG2	2.16	0.46
4:F:239:LEU:HD11	5:G:171:VAL:HG13	1.96	0.46
2:D:384:LEU:HD11	4:F:256:ILE:HG23	1.97	0.46
7:J:715:THR:O	7:J:719:ILE:HD12	2.14	0.46
3:E:43:LYS:HA	3:E:45:TRP:CZ3	2.50	0.46
3:E:62:LEU:HD21	3:E:183:LEU:HD22	1.98	0.46
4:F:77:GLU:HG2	4:F:80:ASN:HB3	1.97	0.46
6:H:148:ILE:HG23	6:H:149:LEU:HD12	1.97	0.46
2:D:137:LYS:HA	2:D:137:LYS:HD3	1.60	0.46
6:H:41:LEU:HD13	6:H:56:LEU:HD22	1.96	0.46
1:B:87:GLU:HA	1:B:90:ASN:ND2	2.31	0.46
9:A:290:ALA:HB2	9:A:319:PHE:HB3	1.97	0.46
3:E:98:LEU:HD23	3:E:116:TYR:HD2	1.81	0.45
4:F:97:LYS:HE2	4:F:137:HIS:ND1	2.31	0.45
9:A:201:MET:HE2	9:A:201:MET:HB2	1.83	0.45
1:B:72:LEU:O	1:B:75:MET:HG3	2.16	0.45
5:G:218:LYS:HD2	5:G:218:LYS:C	2.41	0.45
9:A:280:PHE:O	9:A:280:PHE:CD1	2.69	0.45
1:B:87:GLU:OE2	1:B:88:MET:HG2	2.16	0.45
3:E:230:LYS:HD3	3:E:238:LEU:HD12	1.98	0.45
7:J:709:GLN:CD	7:J:709:GLN:H	2.23	0.45
10:C:83:LEU:O	10:C:87:THR:HG22	2.17	0.45
1:B:122:SER:O	1:B:123:LYS:HG2	2.17	0.45
3:E:163:GLU:HB2	3:E:164:PRO:HD3	1.99	0.45
7:J:759:TRP:CE3	7:J:760:LEU:HD22	2.52	0.45
7:J:745:MET:HE2	7:J:745:MET:N	2.32	0.45
9:A:131:VAL:O	9:A:135:ARG:HG2	2.17	0.45
1:B:79:ASN:OD1	1:B:84:ASN:HB3	2.17	0.45
2:D:36:LEU:HD12	2:D:36:LEU:HA	1.82	0.45
11:I:37:PRO:HG2	11:I:40:GLN:HB3	1.99	0.45

Continued on next page...

Continued from previous page...

Atom-1	Atom-2	Interatomic distance (Å)	Clash overlap (Å)
1:B:77:LYS:HE2	1:B:81:LYS:NZ	2.32	0.45
1:B:311:MET:O	1:B:315:VAL:HG23	2.16	0.45
2:D:394:GLU:HG2	2:D:395:TRP:N	2.32	0.45
3:E:63:LEU:O	3:E:67:MET:HG2	2.17	0.45
1:B:146:ARG:H	1:B:146:ARG:HD3	1.82	0.45
6:H:107:GLU:OE1	6:H:107:GLU:N	2.48	0.45
9:A:51:TYR:HB2	9:A:56:ARG:HG2	1.99	0.45
6:H:98:TRP:CD1	6:H:106:MET:HG3	2.52	0.45
10:C:150:LEU:HD12	10:C:191:ILE:HG13	1.98	0.44
1:B:147:LEU:O	1:B:150:LYS:HB3	2.16	0.44
11:I:23:VAL:HG12	11:I:27:LYS:HE2	1.98	0.44
1:B:96:LEU:HD23	1:B:105:ARG:HH22	1.83	0.44
9:A:45:GLU:HA	9:A:77:MET:HE1	1.98	0.44
9:A:44:LEU:HD13	9:A:70:LEU:HD11	1.98	0.44
3:E:311:THR:HG23	4:F:290:ALA:HA	2.00	0.44
4:F:75:LYS:HG3	4:F:82:GLU:HB3	2.00	0.44
10:C:70:SER:O	10:C:71:VAL:HG22	2.17	0.44
6:H:57:TRP:CZ2	6:H:65:LYS:HD2	2.53	0.44
8:K:46:GLU:N	8:K:46:GLU:OE2	2.50	0.44
10:C:249:VAL:HA	10:C:253:ILE:HB	1.99	0.44
7:J:713:LEU:HD12	7:J:713:LEU:O	2.18	0.44
10:C:306:ASN:HB3	10:C:326:VAL:HG12	2.00	0.44
7:J:744:ASN:C	7:J:745:MET:HE2	2.42	0.44
3:E:191:LYS:HE2	3:E:191:LYS:HB2	1.91	0.44
7:J:733:GLN:HG2	8:K:93:VAL:HG22	2.00	0.44
9:A:297:ALA:O	9:A:301:PHE:HB2	2.18	0.44
1:B:109:GLU:O	1:B:112:ILE:HG22	2.17	0.43
1:B:148:TRP:HZ2	1:B:170:LYS:HE2	1.81	0.43
11:I:69:LEU:O	11:I:69:LEU:HG	2.18	0.43
1:B:89:MET:HE2	1:B:89:MET:HB2	1.65	0.43
2:D:330:ILE:CG2	2:D:334:LYS:HG2	2.47	0.43
2:D:352:ILE:HG12	2:D:359:VAL:HG13	2.00	0.43
11:I:27:LYS:HA	11:I:30:VAL:HG22	2.00	0.43
2:D:127:LEU:HD11	2:D:150:LYS:HE3	2.00	0.43
3:E:254:SER:O	3:E:255:LEU:HB3	2.18	0.43
9:A:270:LEU:HD21	9:A:289:VAL:HG13	2.00	0.43
1:B:136:LEU:HD23	1:B:144:ASN:HD21	1.84	0.43
1:B:273:ARG:HD3	1:B:302:TYR:CZ	2.53	0.43
9:A:267:ALA:HB2	9:A:296:CYS:HB3	2.00	0.43
9:A:389:MET:HB3	9:A:400:LEU:HD21	2.01	0.43
10:C:93:ILE:HD12	10:C:93:ILE:HA	1.83	0.43

Continued on next page...

Continued from previous page...

Atom-1	Atom-2	Interatomic distance (Å)	Clash overlap (Å)
1:B:77:LYS:HA	1:B:80:PHE:HB3	2.00	0.43
1:B:75:MET:O	1:B:76:ILE:C	2.61	0.43
2:D:281:PHE:O	2:D:284:MET:HG2	2.19	0.43
11:I:23:VAL:HG11	11:I:52:ASP:HA	1.99	0.43
1:B:314:LEU:HD23	1:B:314:LEU:HA	1.86	0.43
1:B:443:ALA:HB1	9:A:456:ARG:HG2	2.01	0.43
7:J:713:LEU:HA	7:J:716:GLN:NE2	2.27	0.43
1:B:88:MET:O	1:B:89:MET:C	2.62	0.42
2:D:284:MET:HE2	2:D:284:MET:HB3	1.84	0.42
4:F:132:ASP:OD2	4:F:134:SER:HB3	2.19	0.42
4:F:295:ILE:HD12	4:F:295:ILE:HA	1.85	0.42
5:G:18:LEU:HD12	5:G:18:LEU:H	1.84	0.42
7:J:722:ILE:HD13	7:J:722:ILE:HA	1.84	0.42
9:A:246:LEU:HD23	9:A:249:LEU:HD21	2.01	0.42
10:C:25:CYS:HA	10:C:28:ILE:HG12	2.01	0.42
10:C:372:MET:HE2	10:C:372:MET:HB2	1.83	0.42
3:E:116:TYR:HE1	4:F:111:GLN:HG2	1.83	0.42
3:E:135:GLY:HA2	3:E:165:PHE:CE2	2.53	0.42
6:H:144:ALA:O	6:H:148:ILE:HG22	2.20	0.42
3:E:32:ASP:HB3	3:E:35:GLN:HB3	2.01	0.42
4:F:72:LEU:HD23	4:F:83:VAL:HG11	2.01	0.42
9:A:198:VAL:O	9:A:201:MET:HG3	2.19	0.42
10:C:148:LEU:HD23	10:C:148:LEU:HA	1.80	0.42
2:D:59:LEU:HD21	2:D:95:ARG:HH22	1.83	0.42
6:H:57:TRP:CH2	6:H:65:LYS:HD2	2.53	0.42
4:F:40:SER:HB2	4:F:79:ARG:HH21	1.85	0.42
10:C:110:ALA:O	10:C:114:ARG:HG3	2.19	0.42
11:I:23:VAL:O	11:I:26:ILE:HG12	2.19	0.42
1:B:77:LYS:NZ	1:B:78:ILE:HG13	2.35	0.42
1:B:88:MET:H	1:B:88:MET:HG3	1.57	0.42
2:D:365:GLU:OE1	2:D:365:GLU:N	2.53	0.42
4:F:124:TRP:CD1	4:F:142:VAL:HG11	2.55	0.42
6:H:31:ILE:HD13	6:H:61:PRO:HG2	2.00	0.42
8:K:69:LYS:O	8:K:69:LYS:HG3	2.20	0.42
9:A:93:GLU:HA	9:A:96:ARG:NH1	2.35	0.42
1:B:267:GLU:H	1:B:267:GLU:HG2	1.65	0.42
8:K:89:MET:O	8:K:93:VAL:HG12	2.19	0.42
9:A:150:LYS:HA	9:A:153:LYS:HG2	2.02	0.42
9:A:189:ARG:HA	9:A:201:MET:HE3	2.02	0.42
2:D:188:LYS:HE3	2:D:188:LYS:HB2	1.91	0.42
5:G:57:GLU:H	5:G:57:GLU:HG3	1.63	0.42

Continued on next page...

Continued from previous page...

Atom-1	Atom-2	Interatomic distance (Å)	Clash overlap (Å)
5:G:164:LYS:HD3	5:G:167:ILE:HD11	2.01	0.42
10:C:40:SER:O	10:C:43:ASP:HB3	2.20	0.42
11:I:41:GLN:CD	11:I:41:GLN:H	2.28	0.42
1:B:420:ARG:NH1	4:F:289:MET:HE1	2.35	0.42
2:D:12:LEU:HD23	2:D:12:LEU:O	2.20	0.42
3:E:91:ILE:HD13	3:E:91:ILE:HA	1.87	0.42
4:F:74:GLY:HA3	4:F:122:LEU:HD11	2.01	0.42
9:A:135:ARG:O	9:A:139:LEU:HD23	2.19	0.42
1:B:66:GLU:HB2	1:B:67:TRP:HE3	1.84	0.42
1:B:100:ARG:C	1:B:100:ARG:HE	2.28	0.42
1:B:439:VAL:HG22	4:F:302:MET:HE1	2.01	0.42
3:E:153:SER:O	3:E:156:MET:HB2	2.20	0.42
3:E:238:LEU:HD23	3:E:238:LEU:HA	1.94	0.42
5:G:105:ALA:HB2	5:G:111:ILE:HD11	2.02	0.42
10:C:225:LYS:HD3	10:C:260:TYR:CE1	2.54	0.42
1:B:175:LEU:HD21	1:B:197:ILE:HD12	2.02	0.41
1:B:435:ASN:HD21	9:A:446:PHE:HA	1.85	0.41
3:E:28:ILE:HD12	3:E:28:ILE:HA	1.96	0.41
3:E:246:TRP:O	3:E:250:LEU:HG	2.20	0.41
4:F:70:GLY:HA3	4:F:125:TYR:CE1	2.55	0.41
4:F:267:LEU:HD23	4:F:267:LEU:HA	1.91	0.41
9:A:142:LEU:HA	9:A:145:LEU:CD2	2.50	0.41
10:C:125:LYS:HG2	10:C:161:TYR:HE2	1.84	0.41
2:D:235:LEU:HD22	2:D:299:ILE:HG22	2.01	0.41
4:F:293:GLY:HA2	4:F:296:THR:HG22	2.02	0.41
6:H:50:MET:HE2	6:H:50:MET:HA	2.02	0.41
10:C:246:SER:OG	10:C:248:ILE:HG22	2.20	0.41
2:D:63:ARG:O	2:D:67:THR:HG22	2.21	0.41
4:F:97:LYS:NZ	4:F:134:SER:HA	2.35	0.41
6:H:46:LEU:HD11	6:H:108:ALA:HB3	2.02	0.41
1:B:129:GLN:HG3	1:B:133:GLU:OE2	2.20	0.41
1:B:189:LYS:HE3	1:B:189:LYS:HA	2.01	0.41
3:E:98:LEU:HD21	3:E:117:MET:HG2	2.02	0.41
9:A:283:LEU:HG	9:A:284:LEU:HD12	2.02	0.41
1:B:88:MET:HE3	1:B:88:MET:HB2	1.76	0.41
1:B:361:LYS:HE2	1:B:361:LYS:HB3	1.95	0.41
3:E:65:MET:HE2	3:E:137:TYR:CD1	2.55	0.41
6:H:129:ILE:HG22	6:H:131:ASP:H	1.85	0.41
10:C:65:LYS:HG3	10:C:67:SER:H	1.85	0.41
2:D:76:LEU:HD23	2:D:77:PRO:O	2.21	0.41
3:E:255:LEU:HD22	4:F:282:GLN:HE21	1.86	0.41

Continued on next page...

Continued from previous page...

Atom-1	Atom-2	Interatomic distance (Å)	Clash overlap (Å)
1:B:439:VAL:HG13	9:A:453:MET:HB2	2.02	0.41
3:E:121:ILE:HD13	3:E:121:ILE:HA	1.85	0.41
5:G:41:TYR:OH	5:G:138:THR:HG21	2.21	0.41
9:A:194:SER:HB3	9:A:197:HIS:CD2	2.56	0.41
9:A:194:SER:HB3	9:A:197:HIS:CG	2.56	0.41
2:D:183:LEU:HD23	2:D:183:LEU:HA	1.89	0.41
5:G:202:HIS:O	5:G:205:THR:HG22	2.20	0.41
9:A:255:LEU:HD21	9:A:357:TYR:CE2	2.55	0.41
9:A:462:ASN:ND2	10:C:169:ILE:HB	2.35	0.41
10:C:206:GLU:O	10:C:210:THR:HG23	2.21	0.41
1:B:85:PHE:O	1:B:88:MET:HG3	2.21	0.41
2:D:208:TYR:HB3	2:D:229:ALA:HB2	2.03	0.41
6:H:44:TYR:HB3	6:H:53:ALA:HB2	2.01	0.41
7:J:707:ILE:HG22	7:J:709:GLN:OE1	2.20	0.41
9:A:219:LEU:HD12	9:A:219:LEU:HA	1.97	0.41
10:C:108:THR:HG21	10:C:144:ASP:OD1	2.21	0.41
2:D:388:ILE:HD13	4:F:241:TYR:CE2	2.56	0.41
3:E:156:MET:HA	3:E:156:MET:HE2	2.02	0.41
8:K:64:CYS:C	8:K:70:GLN:HB3	2.46	0.41
9:A:149:LEU:O	9:A:153:LYS:HE3	2.21	0.41
11:I:36:ILE:HG22	11:I:37:PRO:O	2.21	0.41
11:I:40:GLN:HE22	11:I:71:LEU:HB2	1.85	0.41
5:G:186:LEU:HA	5:G:186:LEU:HD23	1.86	0.40
3:E:255:LEU:HD22	4:F:282:GLN:NE2	2.36	0.40
3:E:269:LEU:HD12	3:E:269:LEU:HA	1.93	0.40
4:F:258:ARG:HD3	5:G:42:VAL:HG11	2.02	0.40
1:B:213:LYS:HA	1:B:213:LYS:HD2	1.73	0.40
2:D:52:MET:SD	2:D:65:LEU:HD11	2.61	0.40
6:H:139:LEU:HA	6:H:140:PRO:HD3	1.96	0.40
10:C:182:LEU:HB3	10:C:219:ILE:HG21	2.03	0.40
10:C:275:LEU:HD22	10:C:302:LEU:HD22	2.04	0.40
9:A:356:MET:C	9:A:358:LEU:N	2.77	0.40
3:E:127:VAL:HG22	4:F:88:GLU:OE1	2.22	0.40
4:F:54:HIS:HE1	4:F:58:MET:HE2	1.85	0.40
9:A:255:LEU:HD13	9:A:284:LEU:HD21	2.03	0.40
11:I:11:LYS:HD3	11:I:12:GLU:N	2.37	0.40

There are no symmetry-related clashes.

5.3 Torsion angles

5.3.1 Protein backbone

In the following table, the Percentiles column shows the percent Ramachandran outliers of the chain as a percentile score with respect to all PDB entries followed by that with respect to all EM entries.

The Analysed column shows the number of residues for which the backbone conformation was analysed, and the total number of residues.

Mol	Chain	Analysed	Favoured	Allowed	Outliers	Percentiles	
1	B	369/443 (83%)	332 (90%)	35 (10%)	2 (0%)	24	58
2	D	403/406 (99%)	390 (97%)	12 (3%)	1 (0%)	43	74
3	E	285/334 (85%)	263 (92%)	21 (7%)	1 (0%)	30	62
4	F	278/327 (85%)	263 (95%)	14 (5%)	1 (0%)	30	62
5	G	211/264 (80%)	202 (96%)	9 (4%)	0	100	100
6	H	168/209 (80%)	163 (97%)	5 (3%)	0	100	100
7	J	363/780 (46%)	340 (94%)	16 (4%)	7 (2%)	6	33
8	K	84/113 (74%)	71 (84%)	12 (14%)	1 (1%)	10	42
9	A	398/491 (81%)	385 (97%)	10 (2%)	3 (1%)	16	50
10	C	402/423 (95%)	367 (91%)	32 (8%)	3 (1%)	18	52
11	I	74/81 (91%)	71 (96%)	3 (4%)	0	100	100
All	All	3035/3871 (78%)	2847 (94%)	169 (6%)	19 (1%)	23	55

All (19) Ramachandran outliers are listed below:

Mol	Chain	Res	Type
7	J	405	PRO
7	J	420	PRO
7	J	610	PRO
7	J	651	GLU
7	J	652	PRO
8	K	81	ASN
9	A	231	ILE
7	J	654	VAL
10	C	40	SER
1	B	270	SER
1	B	291	ILE
4	F	215	SER
10	C	51	VAL

Continued on next page...

Continued from previous page...

Mol	Chain	Res	Type
3	E	15	LEU
7	J	680	VAL
10	C	71	VAL
2	D	331	PRO
9	A	466	VAL
9	A	37	VAL

5.3.2 Protein sidechains ⓘ

In the following table, the Percentiles column shows the percent sidechain outliers of the chain as a percentile score with respect to all PDB entries followed by that with respect to all EM entries.

The Analysed column shows the number of residues for which the sidechain conformation was analysed, and the total number of residues.

Mol	Chain	Analysed	Rotameric	Outliers	Percentiles	
1	B	340/405 (84%)	332 (98%)	8 (2%)	43	64
2	D	346/347 (100%)	345 (100%)	1 (0%)	86	83
3	E	247/282 (88%)	245 (99%)	2 (1%)	73	77
4	F	249/276 (90%)	246 (99%)	3 (1%)	63	73
5	G	185/229 (81%)	185 (100%)	0	100	100
6	H	143/173 (83%)	142 (99%)	1 (1%)	76	78
7	J	75/710 (11%)	75 (100%)	0	100	100
8	K	79/98 (81%)	77 (98%)	2 (2%)	42	64
9	A	352/429 (82%)	351 (100%)	1 (0%)	86	83
10	C	361/377 (96%)	357 (99%)	4 (1%)	65	75
11	I	66/69 (96%)	65 (98%)	1 (2%)	57	71
All	All	2443/3395 (72%)	2420 (99%)	23 (1%)	68	76

All (23) residues with a non-rotameric sidechain are listed below:

Mol	Chain	Res	Type
1	B	75	MET
1	B	76	ILE
1	B	82	LEU
1	B	88	MET
1	B	89	MET

Continued on next page...

Continued from previous page...

Mol	Chain	Res	Type
1	B	131	PHE
1	B	151	THR
1	B	221	SER
2	D	286	MET
3	E	52	PHE
3	E	319	MET
4	F	115	VAL
4	F	205	ARG
4	F	216	THR
6	H	85	ASP
8	K	76	VAL
8	K	111	ILE
9	A	356	MET
10	C	26	GLU
10	C	27	LEU
10	C	51	VAL
10	C	335	GLU
11	I	69	LEU

Sometimes sidechains can be flipped to improve hydrogen bonding and reduce clashes. All (39) such sidechains are listed below:

Mol	Chain	Res	Type
1	B	144	ASN
1	B	255	HIS
1	B	321	ASN
1	B	435	ASN
2	D	19	HIS
2	D	64	GLN
2	D	163	GLN
2	D	176	ASN
2	D	180	ASN
2	D	184	GLN
2	D	256	GLN
3	E	158	ASN
3	E	162	GLN
3	E	265	GLN
4	F	282	GLN
5	G	81	ASN
5	G	142	GLN
5	G	168	ASN
5	G	196	ASN
6	H	19	GLN

Continued on next page...

Continued from previous page...

Mol	Chain	Res	Type
6	H	23	GLN
6	H	51	ASN
6	H	52	ASN
7	J	716	GLN
8	K	86	ASN
8	K	103	GLN
9	A	66	HIS
9	A	243	GLN
9	A	309	ASN
9	A	447	GLN
10	C	20	GLN
10	C	29	ASN
10	C	38	ASN
10	C	41	HIS
10	C	54	HIS
10	C	106	GLN
10	C	109	ASN
10	C	327	GLN
11	I	41	GLN

5.3.3 RNA ⓘ

There are no RNA molecules in this entry.

5.4 Non-standard residues in protein, DNA, RNA chains ⓘ

There are no non-standard protein/DNA/RNA residues in this entry.

5.5 Carbohydrates ⓘ

There are no oligosaccharides in this entry.

5.6 Ligand geometry ⓘ

Of 3 ligands modelled in this entry, 3 are monoatomic - leaving 0 for Mogul analysis.

There are no bond length outliers.

There are no bond angle outliers.

There are no chirality outliers.

There are no torsion outliers.

There are no ring outliers.

No monomer is involved in short contacts.

5.7 Other polymers

There are no such residues in this entry.

5.8 Polymer linkage issues

There are no chain breaks in this entry.

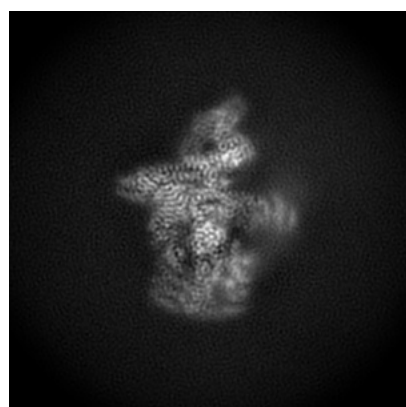
6 Map visualisation [i](#)

This section contains visualisations of the EMDB entry EMD-47983. These allow visual inspection of the internal detail of the map and identification of artifacts.

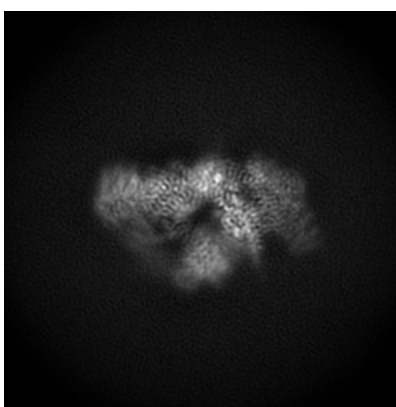
No raw map or half-maps were deposited for this entry and therefore no images, graphs, etc. pertaining to the raw map can be shown.

6.1 Orthogonal projections [i](#)

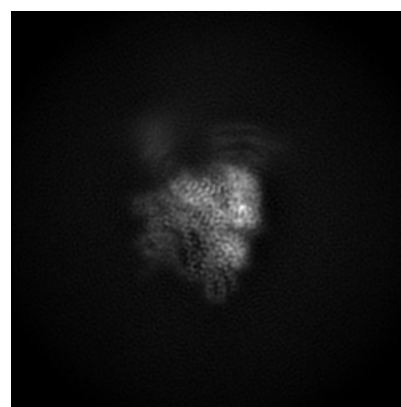
6.1.1 Primary map



X



Y

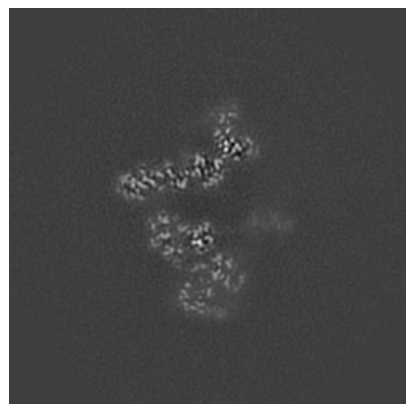


Z

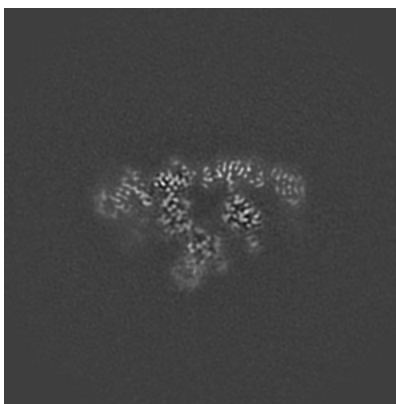
The images above show the map projected in three orthogonal directions.

6.2 Central slices [i](#)

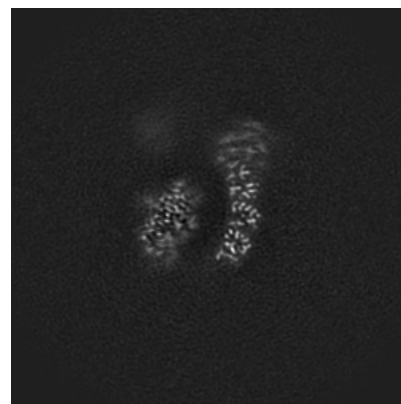
6.2.1 Primary map



X Index: 200



Y Index: 200

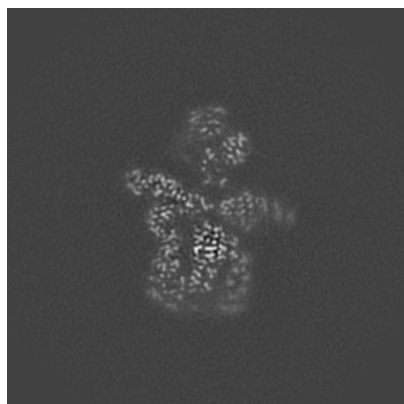


Z Index: 200

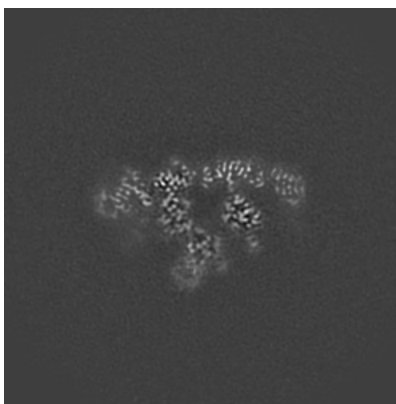
The images above show central slices of the map in three orthogonal directions.

6.3 Largest variance slices [i](#)

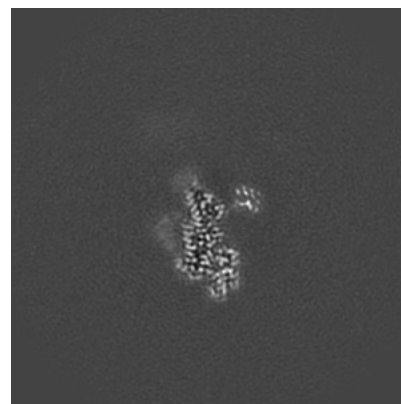
6.3.1 Primary map



X Index: 223



Y Index: 200

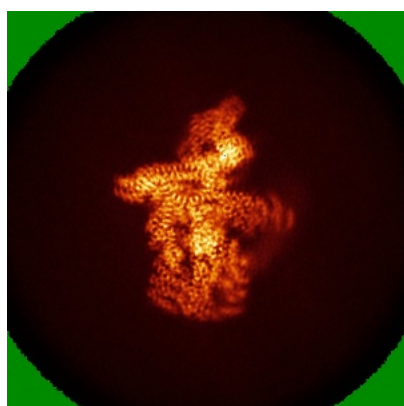


Z Index: 231

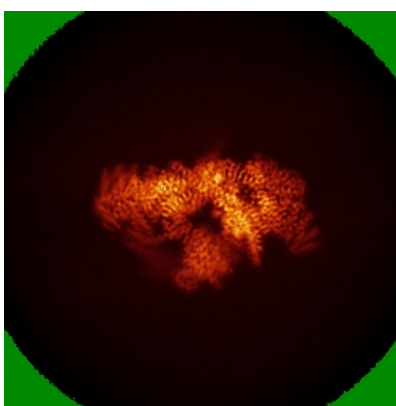
The images above show the largest variance slices of the map in three orthogonal directions.

6.4 Orthogonal standard-deviation projections (False-color) [i](#)

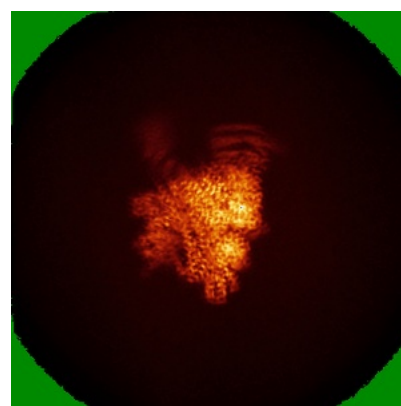
6.4.1 Primary map



X



Y

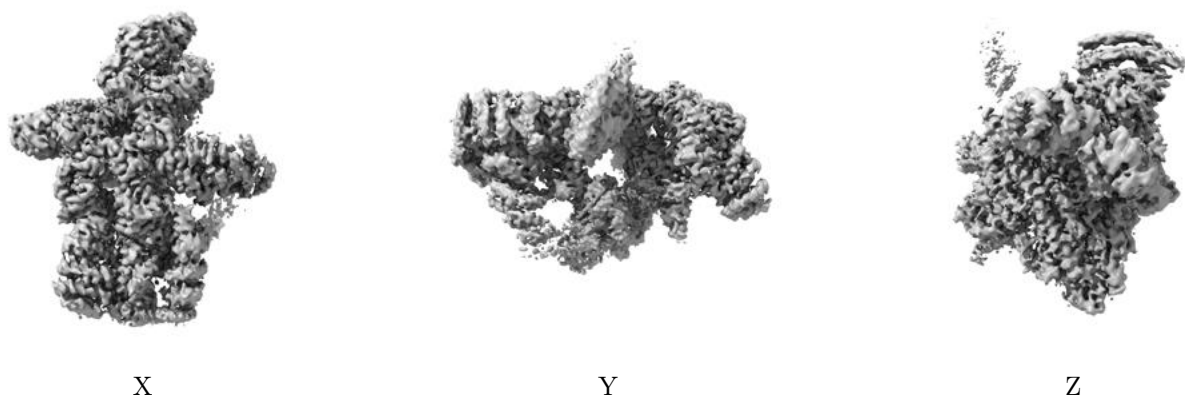


Z

The images above show the map standard deviation projections with false color in three orthogonal directions. Minimum values are shown in green, max in blue, and dark to light orange shades represent small to large values respectively.

6.5 Orthogonal surface views [i](#)

6.5.1 Primary map



The images above show the 3D surface view of the map at the recommended contour level 0.08. These images, in conjunction with the slice images, may facilitate assessment of whether an appropriate contour level has been provided.

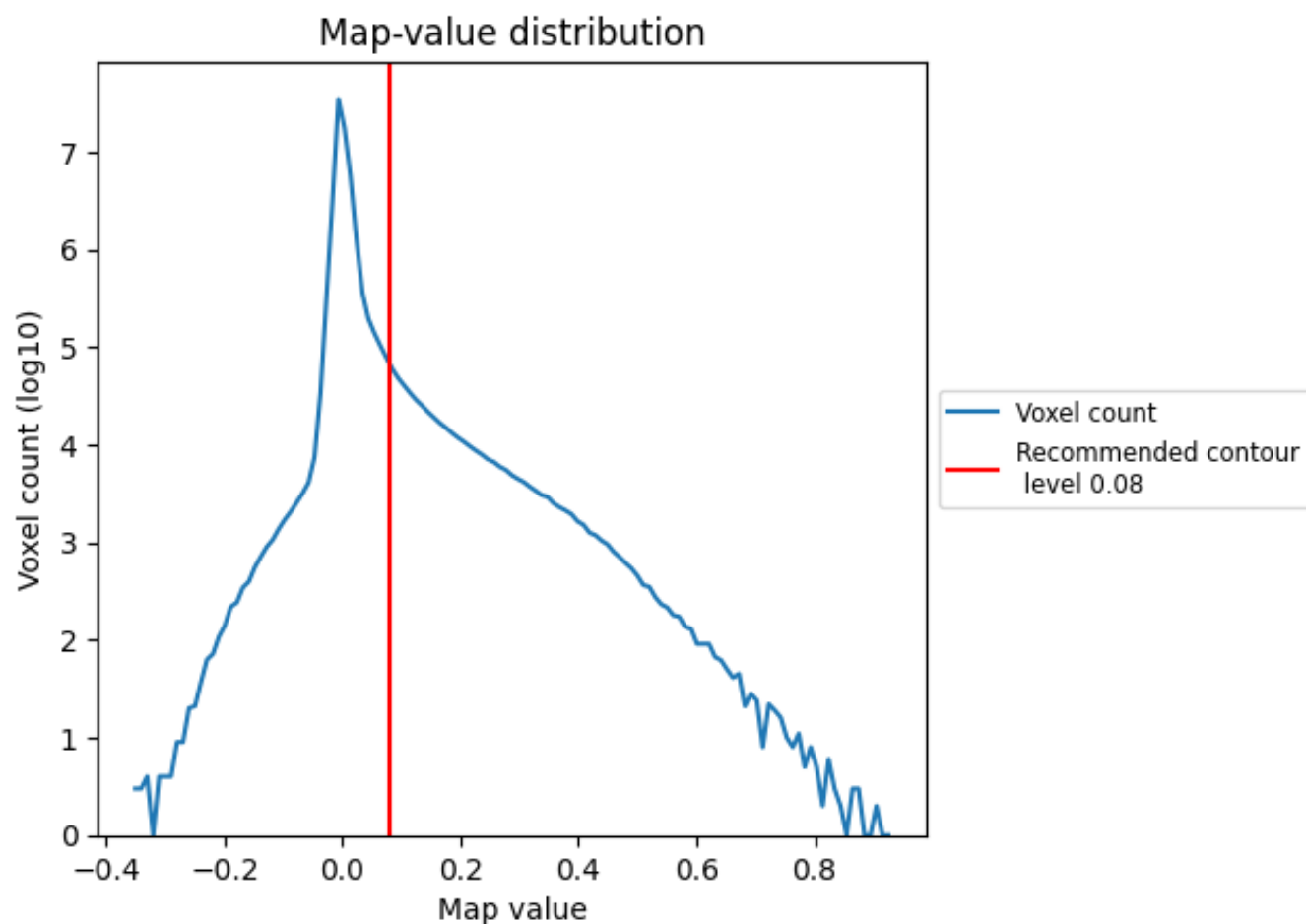
6.6 Mask visualisation [i](#)

This section was not generated. No masks/segmentation were deposited.

7 Map analysis [i](#)

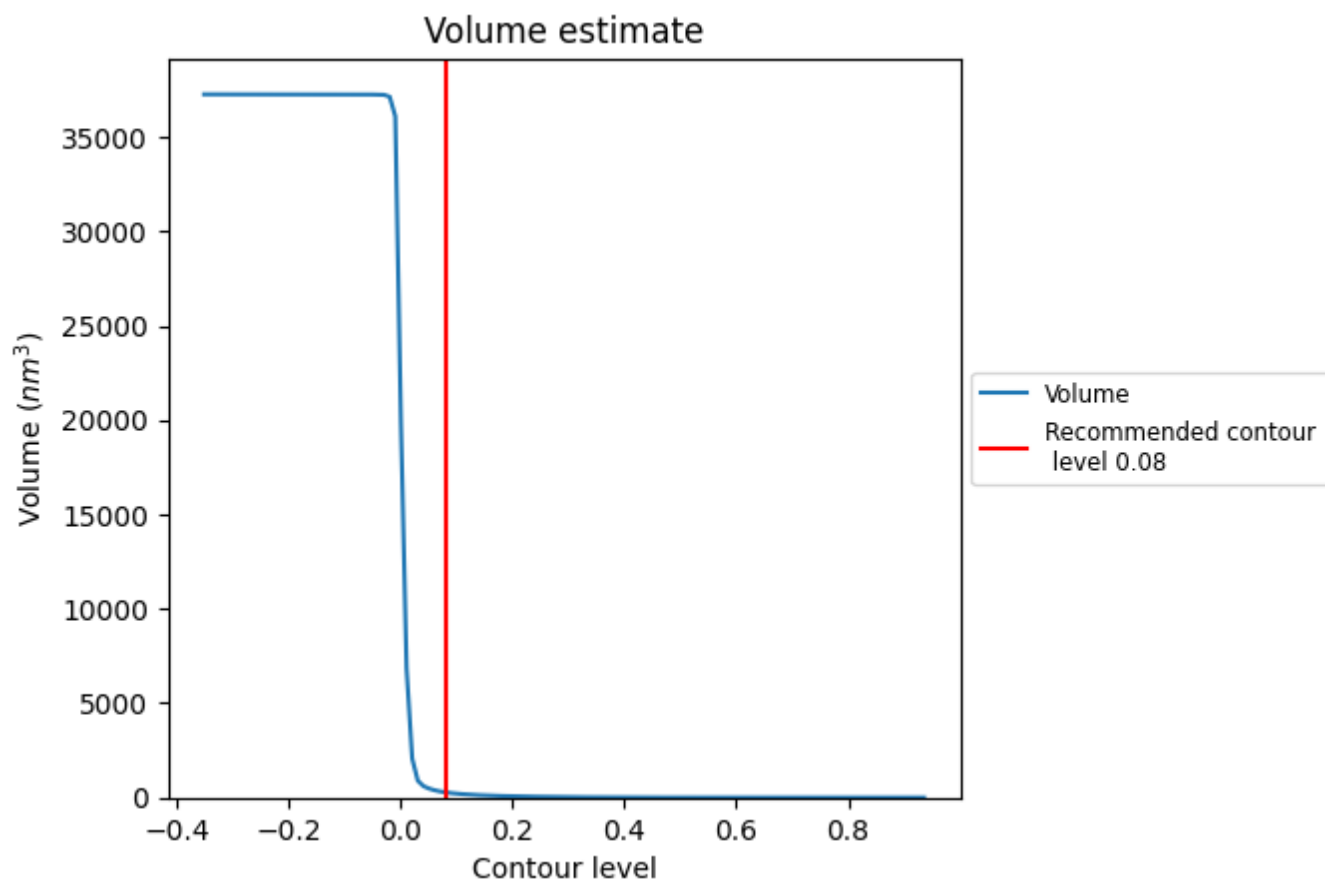
This section contains the results of statistical analysis of the map.

7.1 Map-value distribution [i](#)



The map-value distribution is plotted in 128 intervals along the x-axis. The y-axis is logarithmic. A spike in this graph at zero usually indicates that the volume has been masked.

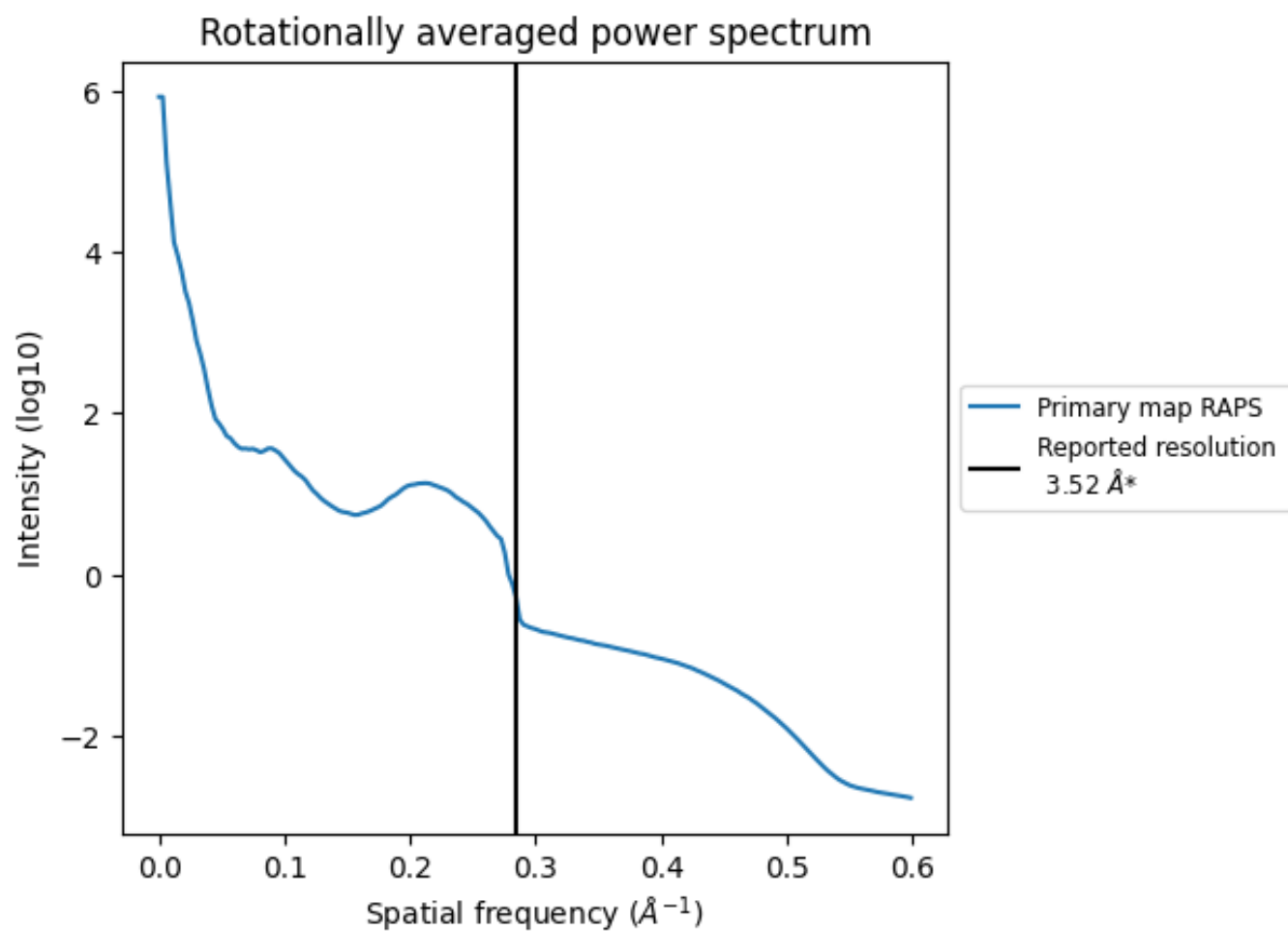
7.2 Volume estimate [i](#)



The volume at the recommended contour level is 277 nm³; this corresponds to an approximate mass of 250 kDa.

The volume estimate graph shows how the enclosed volume varies with the contour level. The recommended contour level is shown as a vertical line and the intersection between the line and the curve gives the volume of the enclosed surface at the given level.

7.3 Rotationally averaged power spectrum ⓘ



*Reported resolution corresponds to spatial frequency of 0.284 Å⁻¹

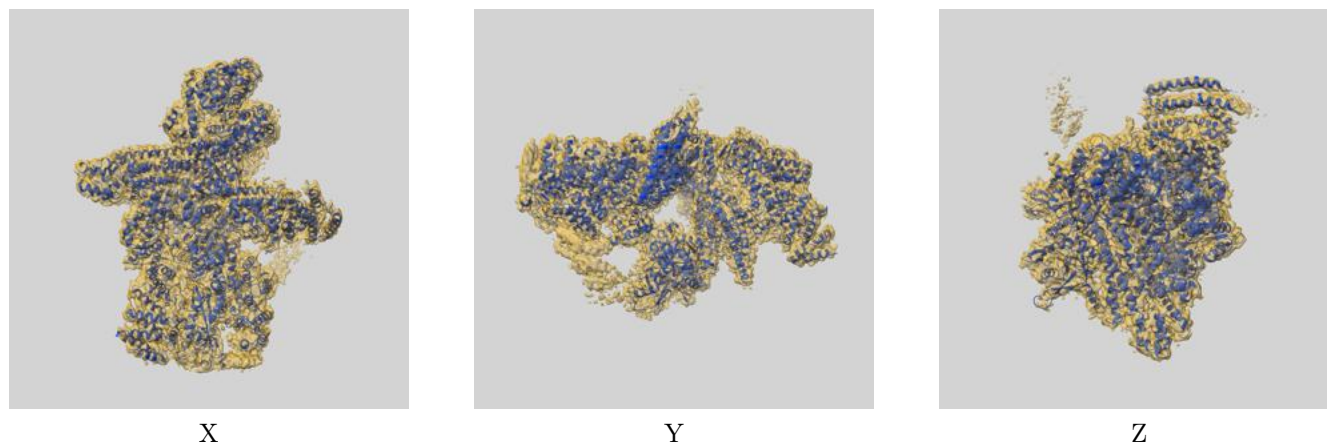
8 Fourier-Shell correlation ⓘ

This section was not generated. No FSC curve or half-maps provided.

9 Map-model fit [i](#)

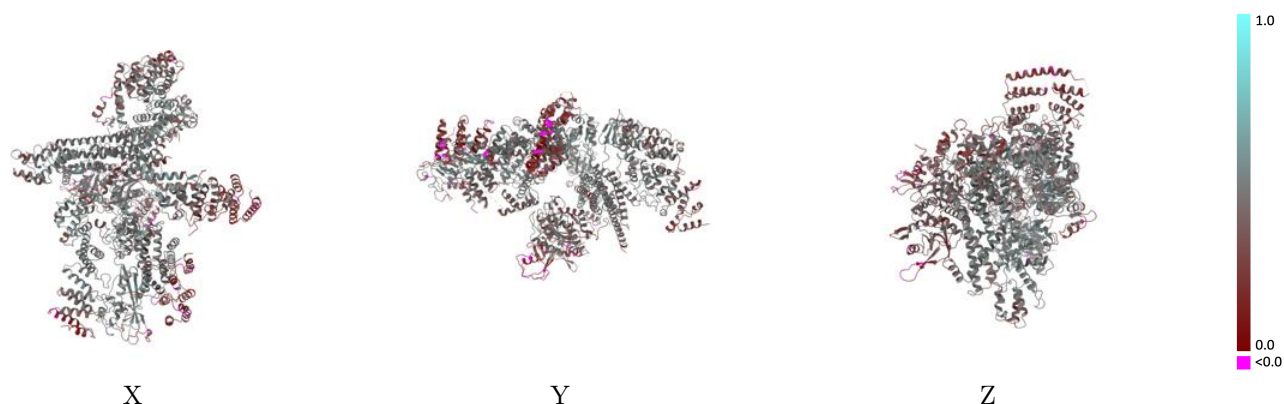
This section contains information regarding the fit between EMDB map EMD-47983 and PDB model 9EG1. Per-residue inclusion information can be found in section [3](#) on page [6](#).

9.1 Map-model overlay [i](#)



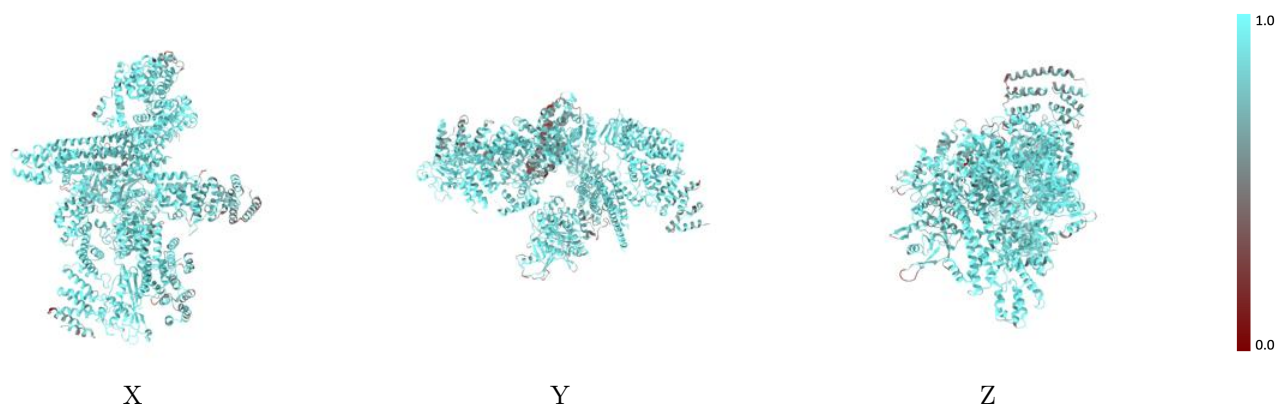
The images above show the 3D surface view of the map at the recommended contour level 0.08 at 50% transparency in yellow overlaid with a ribbon representation of the model coloured in blue. These images allow for the visual assessment of the quality of fit between the atomic model and the map.

9.2 Q-score mapped to coordinate model [i](#)



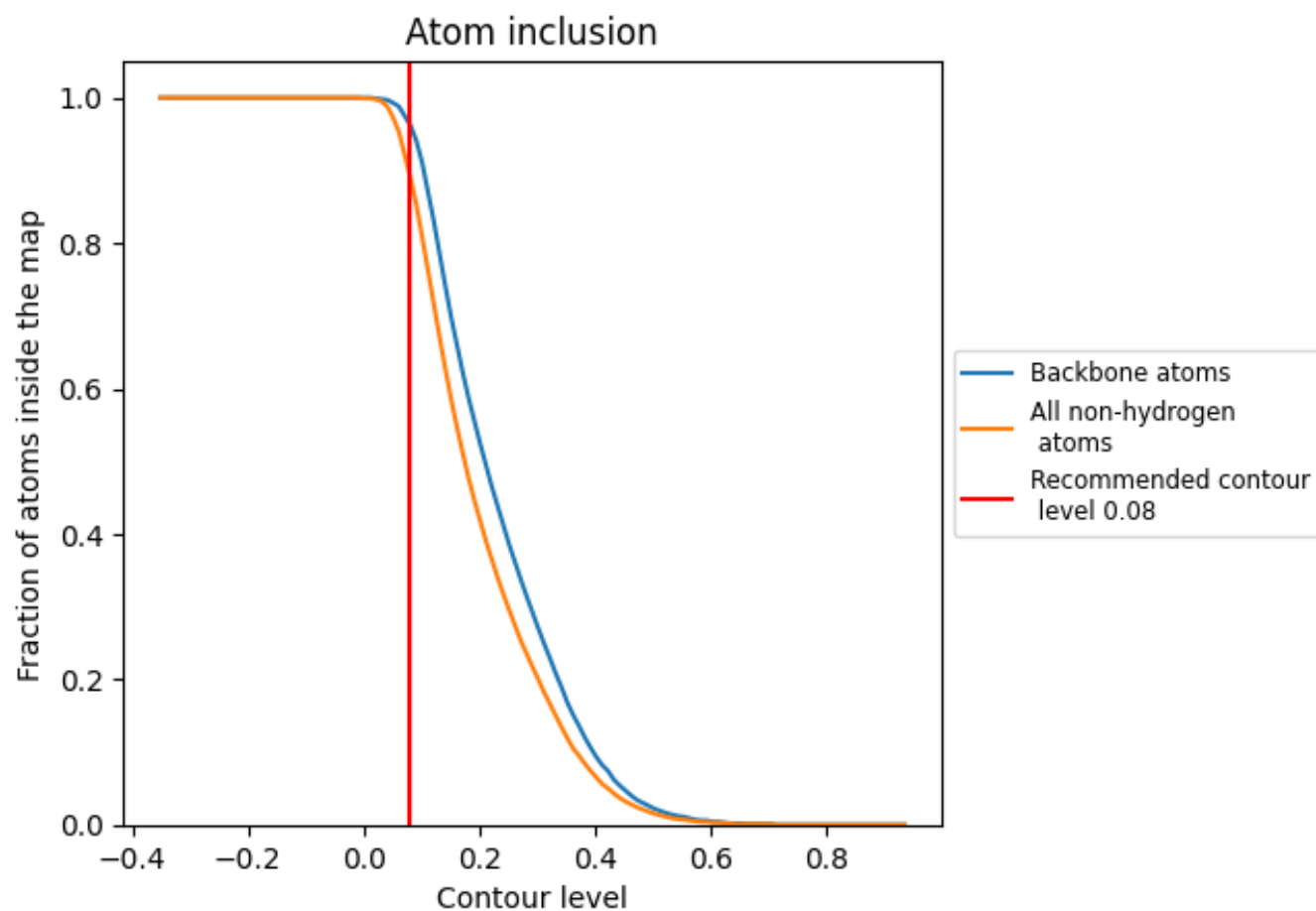
The images above show the model with each residue coloured according to its Q-score. This shows their resolvability in the map with higher Q-score values reflecting better resolvability. Please note: Q-score is calculating the resolvability of atoms, and thus high values are only expected at resolutions at which atoms can be resolved. Low Q-score values may therefore be expected for many entries.

9.3 Atom inclusion mapped to coordinate model [i](#)



The images above show the model with each residue coloured according to its atom inclusion. This shows to what extent they are inside the map at the recommended contour level (0.08).

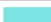





















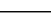
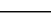
9.4 Atom inclusion [i](#)



At the recommended contour level, 96% of all backbone atoms, 89% of all non-hydrogen atoms, are inside the map.

9.5 Map-model fit summary

The table lists the average atom inclusion at the recommended contour level (0.08) and Q-score for the entire model and for each chain.

Chain	Atom inclusion	Q-score
All	 0.8940	 0.4110
A	 0.8240	 0.3740
B	 0.8720	 0.3850
C	 0.8980	 0.4370
D	 0.9150	 0.4500
E	 0.8990	 0.4100
F	 0.8750	 0.3720
G	 0.9490	 0.4590
H	 0.9240	 0.4250
I	 0.7910	 0.2110
J	 0.9550	 0.4360
K	 0.9490	 0.4690

