



## Full wwPDB EM Validation Report ⓘ

Mar 20, 2026 – 05:18 AM UTC

PDB ID : 9DZH / pdb\_00009dzh  
EMDB ID : EMD-47330  
Title : Human GC-A bound to ANP and REGN5308  
Authors : Liu, S.; Huang, X.-Y.  
Deposited on : 2024-10-16  
Resolution : 3.00 Å(reported)

This is a Full wwPDB EM Validation Report for a publicly released PDB entry.

We welcome your comments at [validation@mail.wwpdb.org](mailto:validation@mail.wwpdb.org)

A user guide is available at

<https://www.wwpdb.org/validation/2017/EMValidationReportHelp>

with specific help available everywhere you see the ⓘ symbol.

The types of validation reports are described at

<http://www.wwpdb.org/validation/2017/FAQs#types>.

---

The following versions of software and data (see [references ⓘ](#)) were used in the production of this report:

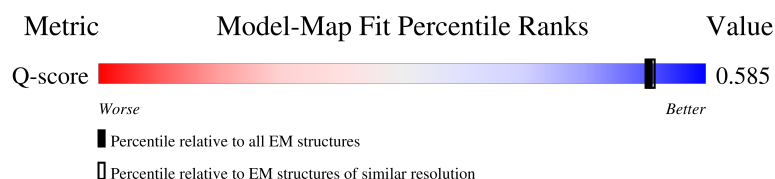
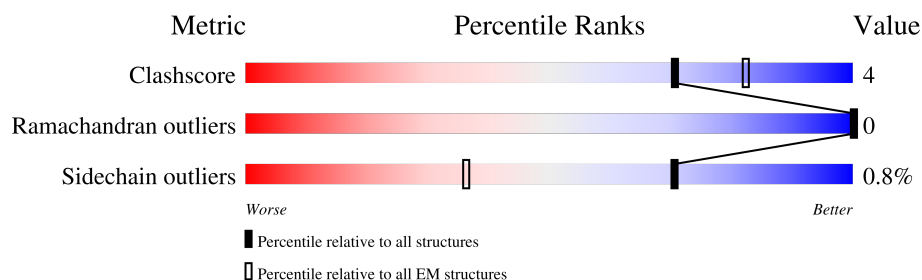
EMDB validation analysis : 0.0.1.dev132  
Mogul : 2022.3.0, CSD as543be (2022)  
MolProbity : 4-5-2 with Phenix2.0  
Buster-report : wwPDB partial adaption of 1.1.7 (2018)  
Percentile statistics : 20250101.v01 (using entries in the PDB archive January 1st 2025)  
EM percentile statistics : 202505.v01 (Using data in the EMDB archive up until May 2025)  
MapQ : 1.9.13  
Ideal geometry (proteins) : Engh & Huber (2001)  
Ideal geometry (DNA, RNA) : Parkinson et al. (1996)  
Validation Pipeline (wwPDB-VP) : 2.49

# 1 Overall quality at a glance

The following experimental techniques were used to determine the structure:  
*ELECTRON MICROSCOPY*




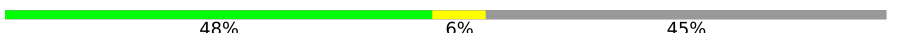
The reported resolution of this entry is 3.00 Å.

Percentile scores (ranging between 0-100) for global validation metrics of the entry are shown in the following graphic. The table shows the number of entries on which the scores are based.



Metric	Whole archive (#Entries)	EM structures (#Entries)	Similar EM resolution (#Entries, resolution range(Å))
Clashscore	229148	23984	-
Ramachandran outliers	224038	23583	-
Sidechain outliers	223484	23102	-
Q-score	-	25397	14081 ( 2.50 - 3.50 )

The table below summarises the geometric issues observed across the polymeric chains and their fit to the map. The red, orange, yellow and green segments of the bar indicate the fraction of residues that contain outliers for  $\geq 3$ , 2, 1 and 0 types of geometric quality criteria respectively. A grey segment represents the fraction of residues that are not modelled. The numeric value for each fraction is indicated below the corresponding segment, with a dot representing fractions  $\leq 5\%$ . The upper red bar (where present) indicates the fraction of residues that have poor fit to the EM map (all-atom inclusion  $< 40\%$ ). The numeric value is given above the bar.

Mol	Chain	Length	Quality of chain
1	A	1031	
1	B	1031	
2	C	28	
3	H	227	

*Continued on next page...*

Continued from previous page...

Mol	Chain	Length	Quality of chain
4	L	213	<div><div></div><div>45%</div><div></div><div></div><div>50%</div></div>
5	D	2	<div><div></div><div>50%</div><div></div><div></div><div>50%</div></div>
5	F	2	<div><div></div><div>100%</div><div></div></div>
5	I	2	<div><div></div><div>50%</div><div></div><div></div><div>50%</div></div>
6	E	3	<div><div></div><div>67%</div><div></div><div></div><div>33%</div></div>
6	G	3	<div><div></div><div>33%</div><div></div><div></div><div>33%</div><div></div><div></div><div>33%</div></div>

## 2 Entry composition

There are 9 unique types of molecules in this entry. The entry contains 8425 atoms, of which 0 are hydrogens and 0 are deuteriums.

In the tables below, the AltConf column contains the number of residues with at least one atom in alternate conformation and the Trace column contains the number of residues modelled with at most 2 atoms.

- Molecule 1 is a protein called Atrial natriuretic peptide receptor 1.

Mol	Chain	Residues	Atoms					AltConf	Trace
1	A	426	Total	C	N	O	S	0	0
			3205	2076	564	552	13		
1	B	427	Total	C	N	O	S	0	0
			3201	2074	566	549	12		

There are 2 discrepancies between the modelled and reference sequences:

Chain	Residue	Modelled	Actual	Comment	Reference
A	-1	ALA	-	expression tag	UNP P16066
B	-1	ALA	-	expression tag	UNP P16066

- Molecule 2 is a protein called Atrial natriuretic peptide.

Mol	Chain	Residues	Atoms					AltConf	Trace
2	C	20	Total	C	N	O	S	0	0
			135	82	27	23	3		

- Molecule 3 is a protein called REGN5308 - Heavy chain.

Mol	Chain	Residues	Atoms					AltConf	Trace
3	H	124	Total	C	N	O	S	0	0
			925	593	162	163	7		

- Molecule 4 is a protein called REGN5308 - Light chain.

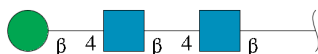
Mol	Chain	Residues	Atoms					AltConf	Trace
4	L	106	Total	C	N	O	S	0	0
			752	484	132	133	3		

- Molecule 5 is an oligosaccharide called 2-acetamido-2-deoxy-beta-D-glucopyranose-(1-4)-2-acetamido-2-deoxy-beta-D-glucopyranose.



Mol	Chain	Residues	Atoms				AltConf	Trace
5	D	2	Total	C	N	O	0	0
			28	16	2	10		
5	F	2	Total	C	N	O	0	0
			28	16	2	10		
5	I	2	Total	C	N	O	0	0
			28	16	2	10		

- Molecule 6 is an oligosaccharide called beta-D-mannopyranose-(1-4)-2-acetamido-2-deoxy-beta-D-glucopyranose-(1-4)-2-acetamido-2-deoxy-beta-D-glucopyranose.



Mol	Chain	Residues	Atoms				AltConf	Trace
6	E	3	Total	C	N	O	0	0
			39	22	2	15		
6	G	3	Total	C	N	O	0	0
			39	22	2	15		

- Molecule 7 is CHLORIDE ION (CCD ID: CL) (formula: Cl) (labeled as "Ligand of Interest" by depositor).

Mol	Chain	Residues	Atoms		AltConf
7	A	1	Total	Cl	0
			1	1	
7	B	1	Total	Cl	0
			1	1	

- Molecule 8 is 2-acetamido-2-deoxy-beta-D-glucopyranose (CCD ID: NAG) (formula: C<sub>8</sub>H<sub>15</sub>NO<sub>6</sub>) (labeled as "Ligand of Interest" by depositor).



Mol	Chain	Residues	Atoms				AltConf
8	A	1	Total	C	N	O	0
			14	8	1	5	
8	A	1	Total	C	N	O	0
			14	8	1	5	
8	B	1	Total	C	N	O	0
			14	8	1	5	

- Molecule 9 is water.

Mol	Chain	Residues	Atoms		AltConf
9	H	1	Total	O	0
			1	1	





THR	ARG	GLY	VAL	ARG	PHE	ASN	THR	ASN	GLU	GLN	LYS	THR	LEU	LEU	GLY	GLN	GLY	GLN	GLY	GLN	GLY	GLN	GLY	GLN	GLY	GLN	GLY	GLN	GLY	GLN	GLY	GLN	GLY	GLN	GLY	GLN	GLY	GLN	GLY	GLN	GLY	GLN	GLY	GLN	GLY	GLN	GLY	GLN	GLY	GLN	GLY	GLN	GLY	GLN	GLY	GLN	GLY	GLN	GLY	GLN	GLY	GLN	GLY	GLN	GLY	GLN	GLY	GLN	GLY	GLN	GLY	GLN	GLY	GLN	GLY	GLN	GLY	GLN	GLY	GLN	GLY	GLN	GLY	GLN	GLY	GLN	GLY	GLN	GLY	GLN	GLY	GLN	GLY	GLN	GLY	GLN	GLY	GLN	GLY	GLN	GLY	GLN	GLY	GLN	GLY	GLN	GLY	GLN	GLY	GLN	GLY	GLN	GLY	GLN	GLY	GLN	GLY	GLN	GLY	GLN	GLY	GLN	GLY	GLN	GLY	GLN	GLY	GLN	GLY	GLN	GLY	GLN	GLY	GLN	GLY	GLN	GLY	GLN	GLY	GLN	GLY	GLN	GLY	GLN	GLY	GLN	GLY	GLN	GLY	GLN	GLY	GLN	GLY	GLN	GLY	GLN	GLY	GLN	GLY	GLN	GLY	GLN	GLY	GLN	GLY	GLN	GLY	GLN	GLY	GLN	GLY	GLN	GLY	GLN	GLY	GLN	GLY	GLN	GLY	GLN	GLY	GLN	GLY	GLN	GLY	GLN	GLY	GLN	GLY	GLN	GLY	GLN	GLY	GLN	GLY	GLN	GLY	GLN	GLY	GLN	GLY	GLN	GLY	GLN	GLY	GLN	GLY	GLN	GLY	GLN	GLY	GLN	GLY	GLN	GLY	GLN	GLY	GLN	GLY	GLN	GLY	GLN	GLY	GLN	GLY	GLN	GLY	GLN	GLY	GLN	GLY	GLN	GLY	GLN	GLY	GLN	GLY	GLN	GLY	GLN	GLY	GLN	GLY	GLN	GLY	GLN	GLY	GLN	GLY	GLN	GLY	GLN	GLY	GLN	GLY	GLN	GLY	GLN	GLY	GLN	GLY	GLN	GLY	GLN	GLY	GLN	GLY	GLN	GLY	GLN	GLY	GLN	GLY	GLN	GLY	GLN	GLY	GLN	GLY	GLN	GLY	GLN	GLY	GLN	GLY	GLN	GLY	GLN	GLY	GLN	GLY	GLN	GLY	GLN	GLY	GLN	GLY	GLN	GLY	GLN	GLY	GLN	GLY	GLN	GLY	GLN	GLY	GLN	GLY	GLN	GLY	GLN	GLY	GLN	GLY	GLN	GLY	GLN	GLY	GLN	GLY	GLN	GLY	GLN	GLY	GLN	GLY	GLN	GLY	GLN	GLY	GLN	GLY	GLN	GLY	GLN	GLY	GLN	GLY	GLN	GLY	GLN	GLY	GLN	GLY	GLN	GLY	GLN	GLY	GLN	GLY	GLN	GLY	GLN	GLY	GLN	GLY	GLN	GLY	GLN	GLY	GLN	GLY	GLN	GLY	GLN	GLY	GLN	GLY	GLN	GLY	GLN	GLY	GLN	GLY	GLN	GLY	GLN	GLY	GLN	GLY	GLN	GLY	GLN	GLY	GLN	GLY	GLN	GLY	GLN	GLY	GLN	GLY	GLN	GLY	GLN	GLY	GLN	GLY	GLN	GLY	GLN	GLY	GLN	GLY	GLN	GLY	GLN	GLY	GLN	GLY	GLN	GLY	GLN	GLY	GLN	GLY	GLN	GLY	GLN	GLY	GLN	GLY	GLN	GLY	GLN	GLY	GLN	GLY	GLN	GLY	GLN	GLY	GLN	GLY	GLN	GLY	GLN	GLY	GLN	GLY	GLN	GLY	GLN	GLY	GLN	GLY	GLN	GLY	GLN	GLY	GLN	GLY	GLN	GLY	GLN	GLY	GLN	GLY	GLN	GLY	GLN	GLY	GLN	GLY	GLN	GLY	GLN	GLY	GLN	GLY	GLN	GLY	GLN	GLY	GLN	GLY	GLN	GLY	GLN	GLY	GLN	GLY	GLN	GLY	GLN	GLY	GLN	GLY	GLN	GLY	GLN	GLY	GLN	GLY	GLN	GLY	GLN	GLY	GLN	GLY	GLN	GLY	GLN	GLY	GLN	GLY	GLN	GLY	GLN	GLY	GLN	GLY	GLN	GLY	GLN	GLY	GLN	GLY	GLN	GLY	GLN	GLY	GLN	GLY	GLN	GLY	GLN	GLY	GLN	GLY	GLN	GLY	GLN	GLY	GLN	GLY	GLN	GLY	GLN	GLY	GLN	GLY	GLN	GLY	GLN	GLY	GLN	GLY	GLN	GLY	GLN	GLY	GLN	GLY	GLN	GLY	GLN	GLY	GLN	GLY	GLN	GLY	GLN	GLY	GLN	GLY	GLN	GLY	GLN	GLY	GLN	GLY	GLN	GLY	GLN	GLY	GLN	GLY	GLN	GLY	GLN	GLY	GLN	GLY	GLN	GLY	GLN	GLY	GLN	GLY	GLN	GLY	GLN	GLY	GLN	GLY	GLN	GLY	GLN	GLY	GLN	GLY	GLN	GLY	GLN	GLY	GLN	GLY	GLN	GLY	GLN	GLY	GLN	GLY	GLN	GLY	GLN	GLY	GLN	GLY	GLN	GLY	GLN	GLY	GLN	GLY	GLN	GLY	GLN	GLY	GLN	GLY	GLN	GLY	GLN	GLY	GLN	GLY	GLN	GLY	GLN	GLY	GLN	GLY	GLN	GLY	GLN	GLY	GLN	GLY	GLN	GLY	GLN	GLY	GLN	GLY	GLN	GLY	GLN	GLY	GLN	GLY	GLN	GLY	GLN	GLY	GLN	GLY	GLN	GLY	GLN	GLY	GLN	GLY	GLN	GLY	GLN	GLY	GLN	GLY	GLN	GLY	GLN	GLY	GLN	GLY	GLN	GLY	GLN	GLY	GLN	GLY	GLN	GLY	GLN	GLY	GLN	GLY	GLN	GLY	GLN	GLY	GLN	GLY	GLN	GLY	GLN	GLY	GLN	GLY	GLN	GLY	GLN	GLY	GLN	GLY	GLN	GLY	GLN	GLY	GLN	GLY	GLN	GLY	GLN	GLY	GLN	GLY	GLN	GLY	GLN	GLY	GLN	GLY	GLN	GLY	GLN	GLY	GLN	GLY	GLN	GLY	GLN	GLY	GLN	GLY	GLN	GLY	GLN	GLY	GLN	GLY	GLN	GLY	GLN	GLY	GLN	GLY	GLN	GLY	GLN	GLY	GLN	GLY	GLN	GLY	GLN	GLY	GLN	GLY	GLN	GLY	GLN	GLY	GLN	GLY	GLN	GLY	GLN	GLY	GLN	GLY	GLN	GLY	GLN	GLY	GLN	GLY	GLN	GLY	GLN	GLY	GLN	GLY	GLN	GLY	GLN	GLY	GLN	GLY	GLN	GLY	GLN	GLY	GLN	GLY	GLN	GLY	GLN	GLY	GLN	GLY	GLN	GLY	GLN	GLY	GLN	GLY	GLN	GLY	GLN	GLY	GLN	GLY	GLN	GLY	GLN	GLY	GLN	GLY	GLN	GLY	GLN	GLY	GLN	GLY	GLN	GLY	GLN	GLY	GLN	GLY	GLN	GLY	GLN	GLY	GLN	GLY	GLN	GLY	GLN	GLY	GLN	GLY	GLN	GLY	GLN	GLY	GLN	GLY	GLN	GLY	GLN	GLY	GLN	GLY	GLN	GLY	GLN	GLY	GLN	GLY	GLN	GLY	GLN	GLY	GLN	GLY	GLN	GLY	GLN	GLY	GLN	GLY	GLN	GLY	GLN	GLY	GLN	GLY	GLN	GLY	GLN	GLY	GLN	GLY	GLN	GLY	GLN	GLY	GLN	GLY	GLN	GLY	GLN	GLY	GLN	GLY	GLN	GLY	GLN	GLY	GLN	GLY	GLN	GLY	GLN	GLY	GLN	GLY	GLN	GLY	GLN	GLY	GLN	GLY	GLN	GLY	GLN	GLY	GLN	GLY	GLN	GLY	GLN	GLY	GLN	GLY	GLN	GLY	GLN	GLY	GLN	GLY	GLN	GLY	GLN	GLY	GLN	GLY	GLN	GLY	GLN	GLY	GLN	GLY	GLN	GLY	GLN	GLY	GLN	GLY	GLN	GLY	GLN	GLY	GLN	GLY	GLN	GLY	GLN	GLY	GLN	GLY	GLN	GLY	GLN	GLY	GLN	GLY	GLN	GLY	GLN	GLY	GLN	GLY	GLN	GLY	GLN	GLY	GLN	GLY	GLN	GLY	GLN	GLY	GLN	GLY	GLN	GLY	GLN	GLY	GLN	GLY	GLN	GLY	GLN	GLY	GLN	GLY	GLN	GLY	GLN	GLY	GLN	GLY	GLN	GLY	GLN	GLY	GLN	GLY	GLN	GLY	GLN	GLY	GLN	GLY	GLN	GLY	GLN	GLY	GLN	GLY	GLN	GLY	GLN	GLY	GLN	GLY	GLN	GLY	GLN	GLY	GLN	GLY	GLN	GLY	GLN	GLY	GLN	GLY	GLN	GLY	GLN	GLY	GLN	GLY	GLN	GLY	GLN	GLY	GLN	GLY	GLN	GLY	GLN	GLY	GLN	GLY	GLN	GLY	GLN	GLY	GLN	GLY	GLN	GLY	GLN	GLY	GLN	GLY	GLN	GLY	GLN	GLY	GLN	GLY	GLN	GLY	GLN	GLY	GLN	GLY	GLN	GLY	GLN	GLY	GLN	GLY	GLN	GLY	GLN	GLY	GLN	GLY	GLN	GLY	GLN	GLY	GLN	GLY	GLN	GLY	GLN	GLY	GLN	GLY	GLN	GLY	GLN	GLY	GLN	GLY	GLN	GLY	GLN	GLY	GLN	GLY	GLN	GLY	GLN	GLY	GLN	GLY	GLN	GLY	GLN	GLY	GLN	GLY	GLN	GLY	GLN	GLY	GLN	GLY	GLN	GLY	GLN	GLY	GLN	GLY	GLN	GLY	GLN	GLY	GLN	GLY	
-----	-----	-----	-----	-----	-----	-----	-----	-----	-----	-----	-----	-----	-----	-----	-----	-----	-----	-----	-----	-----	-----	-----	-----	-----	-----	-----	-----	-----	-----	-----	-----	-----	-----	-----	-----	-----	-----	-----	-----	-----	-----	-----	-----	-----	-----	-----	-----	-----	-----	-----	-----	-----	-----	-----	-----	-----	-----	-----	-----	-----	-----	-----	-----	-----	-----	-----	-----	-----	-----	-----	-----	-----	-----	-----	-----	-----	-----	-----	-----	-----	-----	-----	-----	-----	-----	-----	-----	-----	-----	-----	-----	-----	-----	-----	-----	-----	-----	-----	-----	-----	-----	-----	-----	-----	-----	-----	-----	-----	-----	-----	-----	-----	-----	-----	-----	-----	-----	-----	-----	-----	-----	-----	-----	-----	-----	-----	-----	-----	-----	-----	-----	-----	-----	-----	-----	-----	-----	-----	-----	-----	-----	-----	-----	-----	-----	-----	-----	-----	-----	-----	-----	-----	-----	-----	-----	-----	-----	-----	-----	-----	-----	-----	-----	-----	-----	-----	-----	-----	-----	-----	-----	-----	-----	-----	-----	-----	-----	-----	-----	-----	-----	-----	-----	-----	-----	-----	-----	-----	-----	-----	-----	-----	-----	-----	-----	-----	-----	-----	-----	-----	-----	-----	-----	-----	-----	-----	-----	-----	-----	-----	-----	-----	-----	-----	-----	-----	-----	-----	-----	-----	-----	-----	-----	-----	-----	-----	-----	-----	-----	-----	-----	-----	-----	-----	-----	-----	-----	-----	-----	-----	-----	-----	-----	-----	-----	-----	-----	-----	-----	-----	-----	-----	-----	-----	-----	-----	-----	-----	-----	-----	-----	-----	-----	-----	-----	-----	-----	-----	-----	-----	-----	-----	-----	-----	-----	-----	-----	-----	-----	-----	-----	-----	-----	-----	-----	-----	-----	-----	-----	-----	-----	-----	-----	-----	-----	-----	-----	-----	-----	-----	-----	-----	-----	-----	-----	-----	-----	-----	-----	-----	-----	-----	-----	-----	-----	-----	-----	-----	-----	-----	-----	-----	-----	-----	-----	-----	-----	-----	-----	-----	-----	-----	-----	-----	-----	-----	-----	-----	-----	-----	-----	-----	-----	-----	-----	-----	-----	-----	-----	-----	-----	-----	-----	-----	-----	-----	-----	-----	-----	-----	-----	-----	-----	-----	-----	-----	-----	-----	-----	-----	-----	-----	-----	-----	-----	-----	-----	-----	-----	-----	-----	-----	-----	-----	-----	-----	-----	-----	-----	-----	-----	-----	-----	-----	-----	-----	-----	-----	-----	-----	-----	-----	-----	-----	-----	-----	-----	-----	-----	-----	-----	-----	-----	-----	-----	-----	-----	-----	-----	-----	-----	-----	-----	-----	-----	-----	-----	-----	-----	-----	-----	-----	-----	-----	-----	-----	-----	-----	-----	-----	-----	-----	-----	-----	-----	-----	-----	-----	-----	-----	-----	-----	-----	-----	-----	-----	-----	-----	-----	-----	-----	-----	-----	-----	-----	-----	-----	-----	-----	-----	-----	-----	-----	-----	-----	-----	-----	-----	-----	-----	-----	-----	-----	-----	-----	-----	-----	-----	-----	-----	-----	-----	-----	-----	-----	-----	-----	-----	-----	-----	-----	-----	-----	-----	-----	-----	-----	-----	-----	-----	-----	-----	-----	-----	-----	-----	-----	-----	-----	-----	-----	-----	-----	-----	-----	-----	-----	-----	-----	-----	-----	-----	-----	-----	-----	-----	-----	-----	-----	-----	-----	-----	-----	-----	-----	-----	-----	-----	-----	-----	-----	-----	-----	-----	-----	-----	-----	-----	-----	-----	-----	-----	-----	-----	-----	-----	-----	-----	-----	-----	-----	-----	-----	-----	-----	-----	-----	-----	-----	-----	-----	-----	-----	-----	-----	-----	-----	-----	-----	-----	-----	-----	-----	-----	-----	-----	-----	-----	-----	-----	-----	-----	-----	-----	-----	-----	-----	-----	-----	-----	-----	-----	-----	-----	-----	-----	-----	-----	-----	-----	-----	-----	-----	-----	-----	-----	-----	-----	-----	-----	-----	-----	-----	-----	-----	-----	-----	-----	-----	-----	-----	-----	-----	-----	-----	-----	-----	-----	-----	-----	-----	-----	-----	-----	-----	-----	-----	-----	-----	-----	-----	-----	-----	-----	-----	-----	-----	-----	-----	-----	-----	-----	-----	-----	-----	-----	-----	-----	-----	-----	-----	-----	-----	-----	-----	-----	-----	-----	-----	-----	-----	-----	-----	-----	-----	-----	-----	-----	-----	-----	-----	-----	-----	-----	-----	-----	-----	-----	-----	-----	-----	-----	-----	-----	-----	-----	-----	-----	-----	-----	-----	-----	-----	-----	-----	-----	-----	-----	-----	-----	-----	-----	-----	-----	-----	-----	-----	-----	-----	-----	-----	-----	-----	-----	-----	-----	-----	-----	-----	-----	-----	-----	-----	-----	-----	-----	-----	-----	-----	-----	-----	-----	-----	-----	-----	-----	-----	-----	-----	-----	-----	-----	-----	-----	-----	-----	-----	-----	-----	-----	-----	-----	-----	-----	-----	-----	-----	-----	-----	-----	-----	-----	-----	-----	-----	-----	-----	-----	-----	-----	-----	-----	-----	-----	-----	-----	-----	-----	-----	-----	-----	-----	-----	-----	-----	-----	-----	-----	-----	-----	-----	-----	-----	-----	-----	-----	-----	-----	-----	-----	-----	-----	-----	-----	-----	-----	-----	-----	-----	-----	-----	-----	-----	-----	-----	-----	-----	-----	-----	-----	-----	-----	-----	-----	-----	-----	-----	-----	-----	-----	-----	-----	-----	-----	-----	-----	-----	-----	-----	-----	-----	-----	-----	-----	-----	-----	-----	-----	-----	-----	-----	-----	-----	-----	-----	-----	-----	-----	-----	-----	-----	-----	-----	-----	-----	-----	-----	-----	-----	-----	-----	-----	-----	-----	-----	-----	-----	-----	-----	-----	-----	-----	-----	-----	-----	-----	-----	-----	-----	-----	-----	-----	-----	-----	-----	-----	-----	-----	-----	-----	-----	-----	-----	-----	-----	-----	-----	-----	-----	-----	-----	-----	-----	-----	-----	-----	-----	-----	-----	-----	-----	-----	-----	-----	-----	-----	-----	-----	-----	-----	-----	-----	-----	-----	-----	-----	-----	-----	-----	-----	-----	-----	-----	-----	-----	-----	-----	-----	-----	-----	-----	-----	-----	-----	-----	-----	-----	-----	-----	-----	-----	-----	-----	-----	-----	-----	-----	-----	-----	-----	-----	-----	-----	-----	-----	-----	-----	-----	-----	-----	-----	-----	-----	-----	-----	-----	-----	-----	-----	-----	-----	-----	-----	-----	-----	-----	-----	-----	-----	-----	-----	-----	-----	-----	-----	-----	-----	-----	-----	-----	-----	-----	-----	-----	-----	-----	-----	-----	-----	-----	-----	-----	-----	-----	-----	-----	-----	-----	-----	-----	-----	-----	-----	-----	-----	-----	-----	-----	-----	-----	-----	-----	-----	-----	-----	-----	-----	-----	-----	-----	-----	-----	-----	-----	-----	-----	-----	-----	-----	-----	-----	-----	-----	-----	-----	-----	-----	-----	-----	-----	-----	-----	-----	-----	-----	-----	-----	-----	-----	-----	-----	-----	-----	-----	-----	-----	-----	-----	-----	-----	-----	-----	-----	-----	-----	-----	-----	-----	-----	-----	-----	-----	-----	-----	-----	-----	-----	-----	-----	-----	-----	-----	-----	-----	-----	-----	-----	-----	-----	-----	-----	-----	-----	-----	-----	-----	-----	-----	-----	-----	-----	--

- Molecule 2: Atrial natriuretic peptide



SER	LEU	ARG	ARG	SER	SER	C7	M12	F26	ARG	TYR
-----	-----	-----	-----	-----	-----	----	-----	-----	-----	-----

- Molecule 3: REGN5308 - Heavy chain



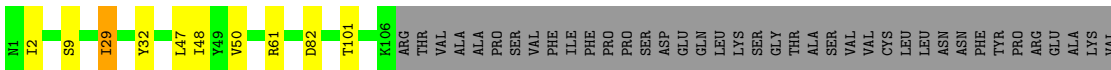
G1	L4	S7	V20	T30	M34	M43	G49	W50	M81	T91	S97	Y109	G110	M111	T118	T121	S124	ALA	SER	THR	LYS	GLY	PRO	SER	VAL	PHE	PRO	LEU	ALA	PRO	SER	SER	SER	LYS	THR	SER	GLY	THR	GLY	ALA	ALA	ASN	VAL	ASN	GLY	CYS	HIS	LYS	PRO
LYS	ASP	TYR	PHE	PRO	PRO	GLU	GLY	VAL	THR	THR	GLY	VAL	HIS	THR	PHE	PRO	ALA	VAL	LEU	SER	GLN	SER	SER	GLY	LEU	TYR	SER	LEU	LEU	VAL	PRO	SER	SER	SER	GLY	THR	GLN	THR	THR	ILE	CYS	ASN	VAL	ASN	HIS	LYS	PRO		



SER  
ASN  
THR  
LYS  
VAL  
ASP  
LYS  
ARG  
VAL  
GLU  
PRO  
LYS  
SER  
CYS

- Molecule 4: REGN5308 - Light chain

Chain L:  45% 50%


 H1 I2 S9 I29 Y32 I47 I48 Y49 V50 R61 D82 T101 K106

GLN TRP LYS VAL ASP ASN ALA LEU GLN SER GLY ASN SER GLN GLU VAL SER THR GLN ASP ARG THR VAL ALA ALA PRO SER VAL PHE ILE PHE PRO PRO SER ASP GLU GLN LEU LYS SER GLY THR ALA SER VAL VAL CYS LEU LEU ASN ASN PHE TYR PRO ARG GLU ALA LYS VAL

LYS  
SER  
PHE  
ASN  
ARG  
GLY  
GLU  
CYS

- Molecule 5: 2-acetamido-2-deoxy-beta-D-glucopyranose-(1-4)-2-acetamido-2-deoxy-beta-D-glucopyranose

Chain D:  50% 50%


 NAG1 NAG2

- Molecule 5: 2-acetamido-2-deoxy-beta-D-glucopyranose-(1-4)-2-acetamido-2-deoxy-beta-D-glucopyranose

Chain F:  100%


 NAG1 NAG2

- Molecule 5: 2-acetamido-2-deoxy-beta-D-glucopyranose-(1-4)-2-acetamido-2-deoxy-beta-D-glucopyranose

Chain I:  50% 50%


 NAG1 NAG2

- Molecule 6: beta-D-mannopyranose-(1-4)-2-acetamido-2-deoxy-beta-D-glucopyranose-(1-4)-2-acetamido-2-deoxy-beta-D-glucopyranose

Chain E:  67% 33%


 NAG1 NAG2 BMA3

- Molecule 6: beta-D-mannopyranose-(1-4)-2-acetamido-2-deoxy-beta-D-glucopyranose-(1-4)-2-acetamido-2-deoxy-beta-D-glucopyranose

Chain G:  33% 33% 33%



## 4 Experimental information

Property	Value	Source
EM reconstruction method	SINGLE PARTICLE	Depositor
Imposed symmetry	POINT, Not provided	
Number of particles used	284000	Depositor
Resolution determination method	FSC 0.143 CUT-OFF	Depositor
CTF correction method	PHASE FLIPPING AND AMPLITUDE CORRECTION	Depositor
Microscope	TFS KRIOS	Depositor
Voltage (kV)	300	Depositor
Electron dose ( $e^-/\text{\AA}^2$ )	50	Depositor
Minimum defocus (nm)	800	Depositor
Maximum defocus (nm)	2000	Depositor
Magnification	Not provided	
Image detector	GATAN K3 (6k x 4k)	Depositor
Maximum map value	7.141	Depositor
Minimum map value	-4.223	Depositor
Average map value	0.000	Depositor
Map value standard deviation	0.142	Depositor
Recommended contour level	0.6	Depositor
Map size (Å)	273.92, 273.92, 273.92	wwPDB
Map dimensions	256, 256, 256	wwPDB
Map angles (°)	90.0, 90.0, 90.0	wwPDB
Pixel spacing (Å)	1.07, 1.07, 1.07	Depositor

## 5 Model quality [i](#)

### 5.1 Standard geometry [i](#)

Bond lengths and bond angles in the following residue types are not validated in this section: NAG, CL, BMA

The Z score for a bond length (or angle) is the number of standard deviations the observed value is removed from the expected value. A bond length (or angle) with  $|Z| > 5$  is considered an outlier worth inspection. RMSZ is the root-mean-square of all Z scores of the bond lengths (or angles).

Mol	Chain	Bond lengths		Bond angles	
		RMSZ	# $ Z  > 5$	RMSZ	# $ Z  > 5$
1	A	0.16	0/3298	0.33	0/4509
1	B	0.17	0/3294	0.32	0/4505
2	C	0.14	0/136	0.30	0/178
3	H	0.16	0/952	0.32	0/1297
4	L	0.20	0/769	0.42	0/1049
All	All	0.17	0/8449	0.33	0/11538

There are no bond length outliers.

There are no bond angle outliers.

There are no chirality outliers.

There are no planarity outliers.

### 5.2 Too-close contacts [i](#)

In the following table, the Non-H and H(model) columns list the number of non-hydrogen atoms and hydrogen atoms in the chain respectively. The H(added) column lists the number of hydrogen atoms added and optimized by MolProbity. The Clashes column lists the number of clashes within the asymmetric unit, whereas Symm-Clashes lists symmetry-related clashes.

Mol	Chain	Non-H	H(model)	H(added)	Clashes	Symm-Clashes
1	A	3205	0	3098	18	0
1	B	3201	0	3071	15	0
2	C	135	0	122	1	0
3	H	925	0	827	8	0
4	L	752	0	676	8	0
5	D	28	0	25	3	0
5	F	28	0	25	0	0
5	I	28	0	25	1	0

*Continued on next page...*

*Continued from previous page...*

Mol	Chain	Non-H	H(model)	H(added)	Clashes	Symm-Clashes
6	E	39	0	34	3	0
6	G	39	0	34	2	0
7	A	1	0	0	0	0
7	B	1	0	0	0	0
8	A	28	0	26	0	0
8	B	14	0	13	0	0
9	H	1	0	0	0	0
All	All	8425	0	7976	58	0

The all-atom clashscore is defined as the number of clashes found per 1000 atoms (including hydrogen atoms). The all-atom clashscore for this structure is 4.

All (58) close contacts within the same asymmetric unit are listed below, sorted by their clash magnitude.

Atom-1	Atom-2	Interatomic distance (Å)	Clash overlap (Å)
4:L:9:SER:O	4:L:101:THR:HG23	1.30	1.21
4:L:9:SER:O	4:L:101:THR:CG2	2.16	0.92
6:E:1:NAG:H83	6:E:1:NAG:H3	1.56	0.87
6:G:2:NAG:H4	6:G:3:BMA:O2	1.85	0.77
4:L:61:ARG:NH1	4:L:82:ASP:OD1	2.19	0.75
4:L:50:VAL:O	4:L:50:VAL:HG12	1.91	0.70
5:D:1:NAG:H83	5:D:1:NAG:H3	1.75	0.67
1:A:83:GLY:HA3	1:A:104:LEU:HD11	1.77	0.67
1:B:391:VAL:HG21	1:B:409:LEU:HD23	1.81	0.63
6:E:1:NAG:H3	6:E:1:NAG:C8	2.29	0.63
1:A:153:LEU:HD13	1:A:199:LEU:HD21	1.80	0.62
1:B:83:GLY:HA3	1:B:104:LEU:HD11	1.80	0.62
1:B:154:TYR:HB3	1:B:168:VAL:HG21	1.83	0.61
4:L:2:ILE:HD13	4:L:29:ILE:CG2	2.31	0.60
1:A:116:VAL:O	1:A:116:VAL:HG13	2.00	0.59
3:H:20:VAL:HG22	3:H:81:MET:HE2	1.87	0.56
1:A:151:LEU:HD12	1:A:184:ASP:O	2.08	0.53
5:D:1:NAG:C1	5:D:1:NAG:H82	2.39	0.52
1:A:367:ASP:OD1	1:A:371:ASP:O	2.28	0.52
1:A:154:TYR:HB3	1:A:168:VAL:HG21	1.90	0.52
1:A:155:ALA:HB1	1:A:190:GLU:HG3	1.93	0.51
1:B:25:PRO:HB2	1:B:297:LEU:HD12	1.93	0.51
1:A:91:ALA:HB3	1:A:92:PRO:HD3	1.93	0.50
6:G:2:NAG:O3	6:G:3:BMA:H2	2.11	0.50
4:L:47:LEU:C	4:L:48:ILE:HD12	2.36	0.50
1:A:212:ILE:HD12	1:A:219:PHE:HE1	1.77	0.49

*Continued on next page...*

*Continued from previous page...*

Atom-1	Atom-2	Interatomic distance (Å)	Clash overlap (Å)
1:B:248:LEU:O	1:B:257:ARG:NH1	2.40	0.49
1:B:294:LEU:O	1:B:298:LYS:HG2	2.13	0.49
1:A:8:VAL:HG12	1:A:8:VAL:O	2.13	0.49
1:B:62:ASP:OD2	1:B:62:ASP:N	2.45	0.49
1:B:182:THR:O	1:B:182:THR:HG23	2.14	0.48
3:H:7:SER:O	3:H:118:THR:OG1	2.32	0.48
1:B:203:MET:N	1:B:204:PRO:HD2	2.29	0.47
1:B:45:THR:HG21	1:B:47:ARG:NH2	2.29	0.47
1:A:253:GLY:O	1:A:257:ARG:NH1	2.39	0.46
6:E:1:NAG:H83	6:E:1:NAG:C3	2.39	0.46
1:B:329:ILE:O	1:B:332:VAL:HG12	2.16	0.45
1:A:66:PRO:O	1:A:70:VAL:HG23	2.17	0.44
4:L:50:VAL:O	4:L:50:VAL:CG1	2.61	0.44
1:A:186:LEU:HD12	1:A:187:GLU:H	1.82	0.44
5:D:1:NAG:C1	5:D:1:NAG:C8	2.96	0.44
3:H:4:LEU:HD12	3:H:4:LEU:N	2.33	0.43
1:B:186:LEU:HD21	1:B:199:LEU:HD12	2.01	0.43
3:H:50:TRP:CD1	3:H:50:TRP:C	2.98	0.42
1:B:317:ILE:HB	1:B:318:PRO:HD3	2.02	0.42
3:H:30:THR:O	3:H:30:THR:HG22	2.19	0.42
1:B:334:GLU:CG	1:B:351:ARG:HD3	2.49	0.42
1:A:281:THR:CG2	1:A:313:LEU:CD1	2.97	0.42
1:A:395:ASN:O	1:A:399:GLN:N	2.52	0.42
3:H:91:THR:HG23	3:H:121:THR:HA	2.02	0.42
1:A:143:ARG:HD2	1:A:401:LEU:HD13	2.01	0.41
3:H:48:MET:HE2	3:H:48:MET:HB2	1.93	0.41
1:B:65:ALA:HB3	1:B:66:PRO:CD	2.50	0.41
1:A:116:VAL:O	1:A:116:VAL:CG1	2.69	0.41
3:H:97:SER:HB2	3:H:111:MET:HB3	2.03	0.40
2:C:12:MET:HE2	2:C:12:MET:HB2	1.98	0.40
1:A:109:ALA:N	1:A:110:PRO:HD3	2.37	0.40
4:L:32:TYR:CE1	5:I:1:NAG:H81	2.57	0.40

There are no symmetry-related clashes.

## 5.3 Torsion angles

### 5.3.1 Protein backbone

In the following table, the Percentiles column shows the percent Ramachandran outliers of the chain as a percentile score with respect to all PDB entries followed by that with respect to all EM

entries.

The Analysed column shows the number of residues for which the backbone conformation was analysed, and the total number of residues.

Mol	Chain	Analysed	Favoured	Allowed	Outliers	Percentiles	
1	A	424/1031 (41%)	404 (95%)	20 (5%)	0	100	100
1	B	425/1031 (41%)	414 (97%)	11 (3%)	0	100	100
2	C	18/28 (64%)	18 (100%)	0	0	100	100
3	H	122/227 (54%)	119 (98%)	3 (2%)	0	100	100
4	L	104/213 (49%)	91 (88%)	13 (12%)	0	100	100
All	All	1093/2530 (43%)	1046 (96%)	47 (4%)	0	100	100

There are no Ramachandran outliers to report.

### 5.3.2 Protein sidechains ⓘ

In the following table, the Percentiles column shows the percent sidechain outliers of the chain as a percentile score with respect to all PDB entries followed by that with respect to all EM entries.

The Analysed column shows the number of residues for which the sidechain conformation was analysed, and the total number of residues.

Mol	Chain	Analysed	Rotameric	Outliers	Percentiles	
1	A	310/871 (36%)	309 (100%)	1 (0%)	86	91
1	B	303/871 (35%)	302 (100%)	1 (0%)	86	91
2	C	12/22 (54%)	12 (100%)	0	100	100
3	H	81/192 (42%)	78 (96%)	3 (4%)	30	64
4	L	64/189 (34%)	63 (98%)	1 (2%)	55	79
All	All	770/2145 (36%)	764 (99%)	6 (1%)	70	86

All (6) residues with a non-rotameric sidechain are listed below:

Mol	Chain	Res	Type
1	A	284	ASP
1	B	199	LEU
3	H	34	MET
3	H	109	TYR
3	H	118	THR
4	L	29	ILE

Sometimes sidechains can be flipped to improve hydrogen bonding and reduce clashes. All (3) such sidechains are listed below:

Mol	Chain	Res	Type
1	A	149	GLN
1	A	252	GLN
1	A	275	GLN

### 5.3.3 RNA ⓘ

There are no RNA molecules in this entry.

## 5.4 Non-standard residues in protein, DNA, RNA chains ⓘ

There are no non-standard protein/DNA/RNA residues in this entry.

## 5.5 Carbohydrates ⓘ

12 monosaccharides are modelled in this entry.

In the following table, the Counts columns list the number of bonds (or angles) for which Mogul statistics could be retrieved, the number of bonds (or angles) that are observed in the model and the number of bonds (or angles) that are defined in the Chemical Component Dictionary. The Link column lists molecule types, if any, to which the group is linked. The Z score for a bond length (or angle) is the number of standard deviations the observed value is removed from the expected value. A bond length (or angle) with  $|Z| > 2$  is considered an outlier worth inspection. RMSZ is the root-mean-square of all Z scores of the bond lengths (or angles).

Mol	Type	Chain	Res	Link	Bond lengths			Bond angles		
					Counts	RMSZ	$\# Z  > 2$	Counts	RMSZ	$\# Z  > 2$
5	NAG	D	1	5,1	14,14,15	0.20	0	17,19,21	0.83	1 (5%)
5	NAG	D	2	5	14,14,15	0.24	0	17,19,21	0.39	0
6	NAG	E	1	6,1	14,14,15	0.26	0	17,19,21	0.85	1 (5%)
6	NAG	E	2	6	14,14,15	0.25	0	17,19,21	0.60	0
6	BMA	E	3	6	11,11,12	0.52	0	15,15,17	0.67	0
5	NAG	F	1	5,1	14,14,15	0.35	0	17,19,21	0.47	0
5	NAG	F	2	5	14,14,15	0.20	0	17,19,21	0.40	0
6	NAG	G	1	6,1	14,14,15	0.28	0	17,19,21	0.42	0
6	NAG	G	2	6	14,14,15	0.24	0	17,19,21	0.45	0
6	BMA	G	3	6	11,11,12	0.66	0	15,15,17	0.91	1 (6%)
5	NAG	I	1	5,1	14,14,15	0.25	0	17,19,21	0.47	0
5	NAG	I	2	5	14,14,15	0.21	0	17,19,21	0.41	0



In the following table, the Chirals column lists the number of chiral outliers, the number of chiral centers analysed, the number of these observed in the model and the number defined in the Chemical Component Dictionary. Similar counts are reported in the Torsion and Rings columns. '-' means no outliers of that kind were identified.

Mol	Type	Chain	Res	Link	Chirals	Torsions	Rings
5	NAG	D	1	5,1	-	4/6/23/26	0/1/1/1
5	NAG	D	2	5	-	2/6/23/26	0/1/1/1
6	NAG	E	1	6,1	-	5/6/23/26	0/1/1/1
6	NAG	E	2	6	-	2/6/23/26	0/1/1/1
6	BMA	E	3	6	-	1/2/19/22	0/1/1/1
5	NAG	F	1	5,1	-	0/6/23/26	0/1/1/1
5	NAG	F	2	5	-	2/6/23/26	0/1/1/1
6	NAG	G	1	6,1	-	2/6/23/26	0/1/1/1
6	NAG	G	2	6	-	0/6/23/26	0/1/1/1
6	BMA	G	3	6	-	1/2/19/22	0/1/1/1
5	NAG	I	1	5,1	-	2/6/23/26	0/1/1/1
5	NAG	I	2	5	-	2/6/23/26	0/1/1/1

There are no bond length outliers.

All (3) bond angle outliers are listed below:

Mol	Chain	Res	Type	Atoms	Z	Observed(°)	Ideal(°)
6	G	3	BMA	O2-C2-C3	-2.40	105.18	110.15
6	E	1	NAG	C2-N2-C7	2.17	125.81	122.90
5	D	1	NAG	C2-N2-C7	2.09	125.70	122.90

There are no chirality outliers.

All (23) torsion outliers are listed below:

Mol	Chain	Res	Type	Atoms
5	I	1	NAG	O5-C5-C6-O6
6	G	1	NAG	O5-C5-C6-O6
5	D	2	NAG	C4-C5-C6-O6
6	G	1	NAG	C4-C5-C6-O6
5	I	1	NAG	C4-C5-C6-O6
5	D	2	NAG	O5-C5-C6-O6
5	D	1	NAG	C8-C7-N2-C2
5	D	1	NAG	O7-C7-N2-C2
6	E	1	NAG	C8-C7-N2-C2
6	E	1	NAG	O7-C7-N2-C2
5	F	2	NAG	C4-C5-C6-O6

*Continued on next page...*

*Continued from previous page...*

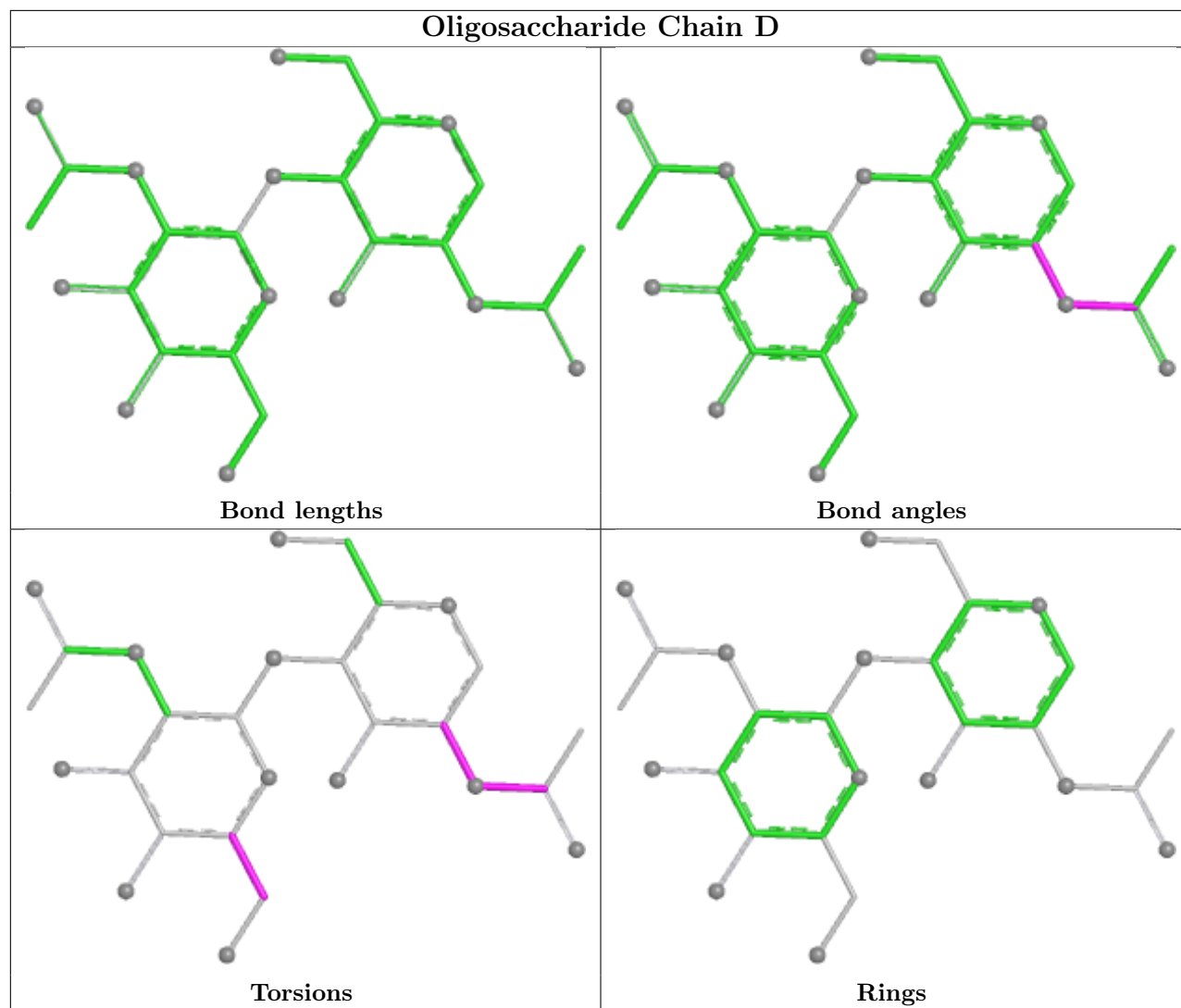
Mol	Chain	Res	Type	Atoms
5	F	2	NAG	O5-C5-C6-O6
6	E	2	NAG	O5-C5-C6-O6
6	E	3	BMA	O5-C5-C6-O6
6	G	3	BMA	O5-C5-C6-O6
5	I	2	NAG	C4-C5-C6-O6
5	I	2	NAG	O5-C5-C6-O6
5	D	1	NAG	C1-C2-N2-C7
6	E	1	NAG	C4-C5-C6-O6
5	D	1	NAG	C3-C2-N2-C7
6	E	1	NAG	C3-C2-N2-C7
6	E	1	NAG	C1-C2-N2-C7
6	E	2	NAG	C4-C5-C6-O6

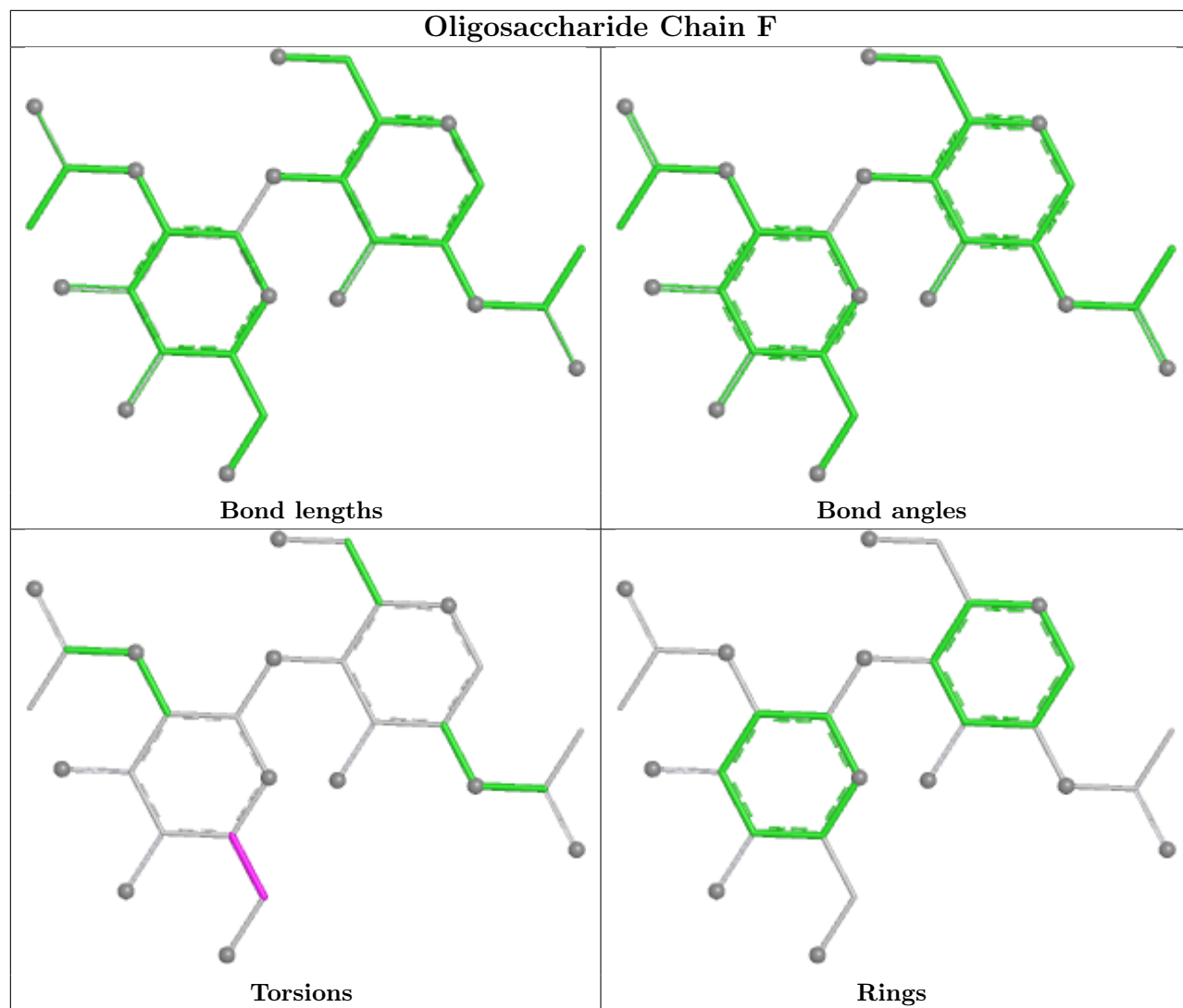
There are no ring outliers.

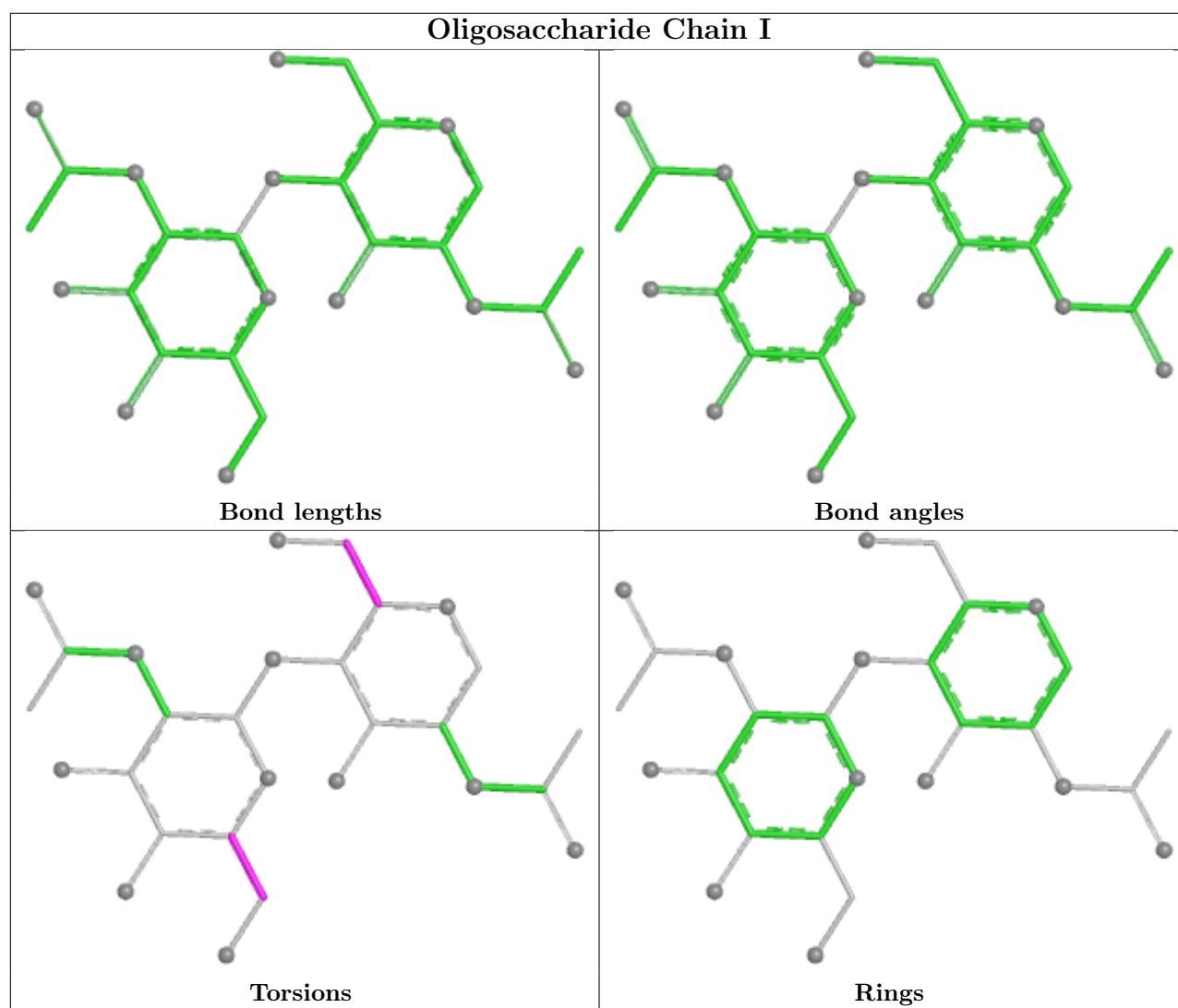
5 monomers are involved in 9 short contacts:

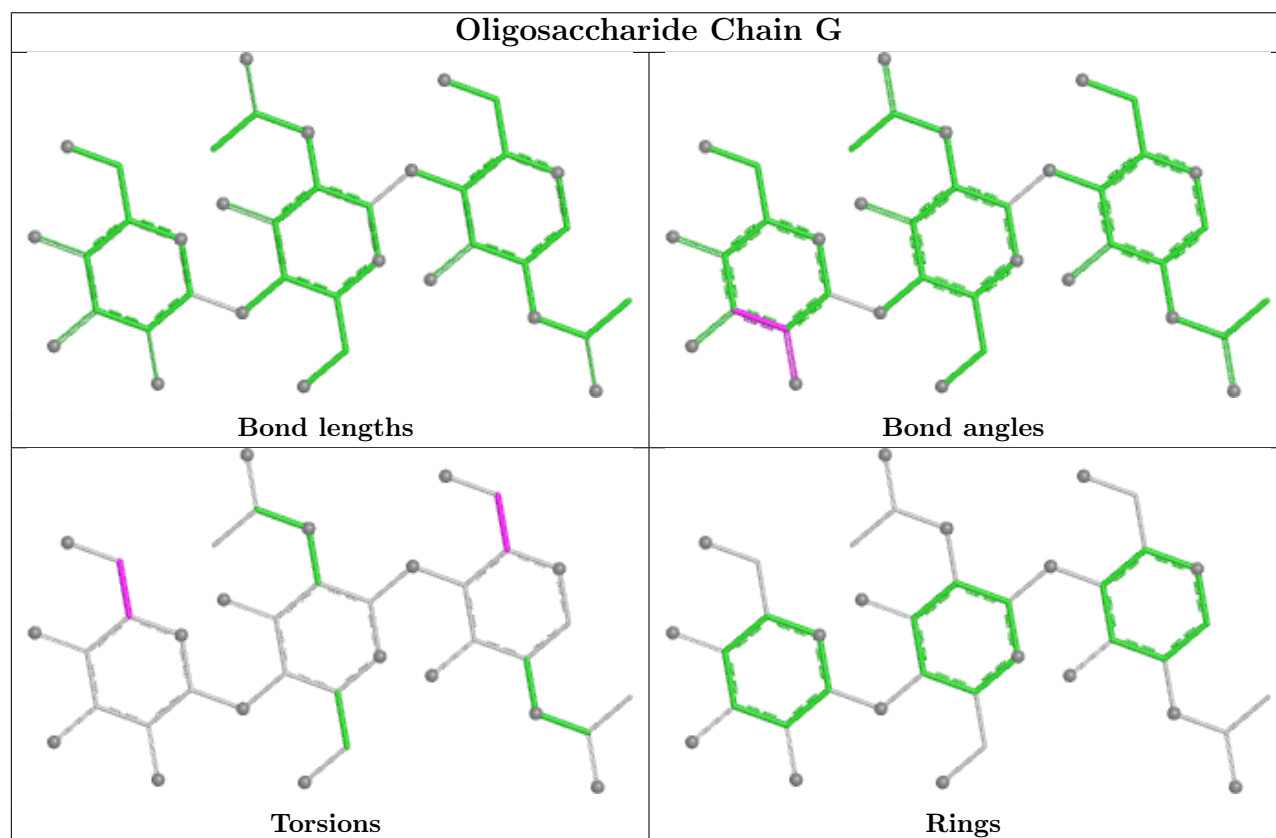
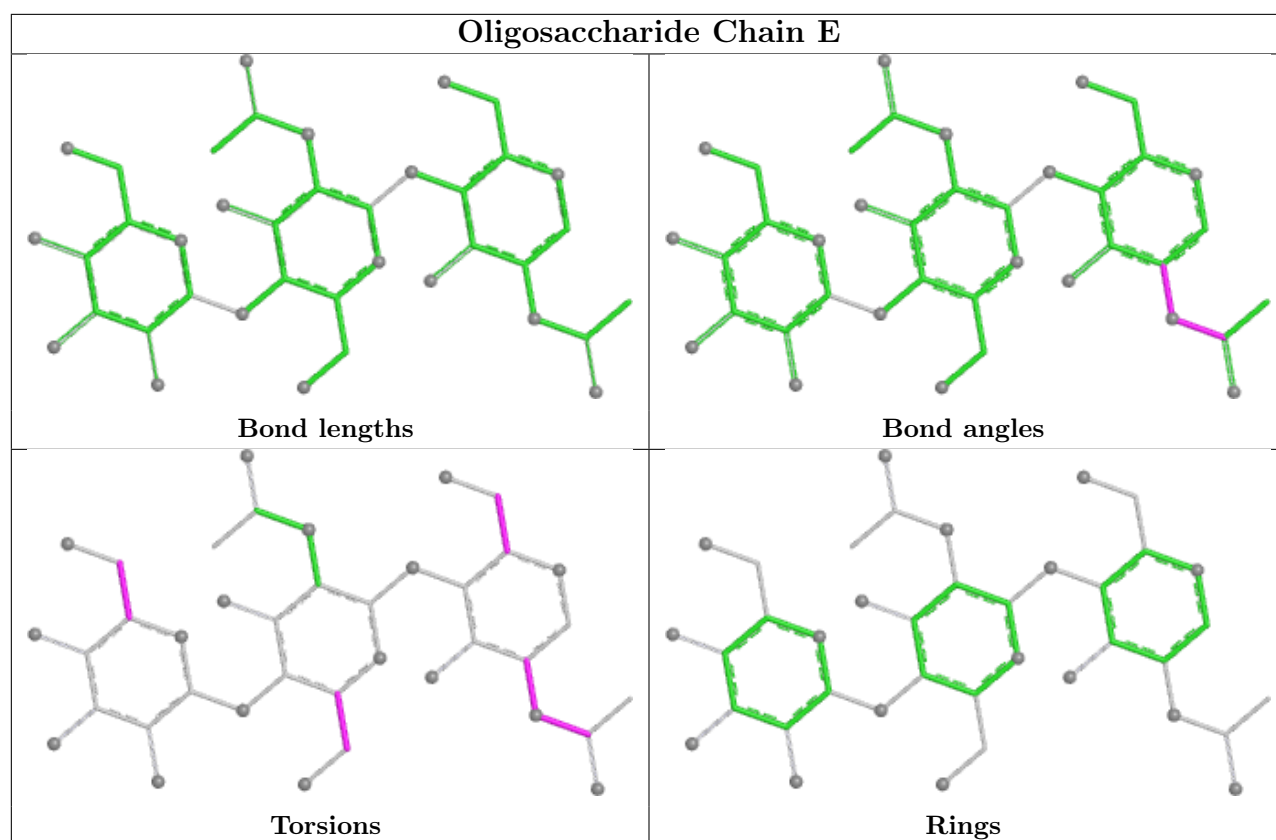
Mol	Chain	Res	Type	Clashes	Symm-Clashes
5	D	1	NAG	3	0
6	G	3	BMA	2	0
6	E	1	NAG	3	0
6	G	2	NAG	2	0
5	I	1	NAG	1	0

The following is a two-dimensional graphical depiction of Mogul quality analysis of bond lengths, bond angles, torsion angles, and ring geometry for oligosaccharide.









## 5.6 Ligand geometry

Of 5 ligands modelled in this entry, 2 are monoatomic - leaving 3 for Mogul analysis.

In the following table, the Counts columns list the number of bonds (or angles) for which Mogul statistics could be retrieved, the number of bonds (or angles) that are observed in the model and the number of bonds (or angles) that are defined in the Chemical Component Dictionary. The Link column lists molecule types, if any, to which the group is linked. The Z score for a bond length (or angle) is the number of standard deviations the observed value is removed from the expected value. A bond length (or angle) with  $|Z| > 2$  is considered an outlier worth inspection. RMSZ is the root-mean-square of all Z scores of the bond lengths (or angles).

Mol	Type	Chain	Res	Link	Bond lengths			Bond angles		
					Counts	RMSZ	$\# Z  > 2$	Counts	RMSZ	$\# Z  > 2$
8	NAG	B	1102	1	14,14,15	0.22	0	17,19,21	0.48	0
8	NAG	A	1103	1	14,14,15	0.22	0	17,19,21	0.49	0
8	NAG	A	1102	1	14,14,15	0.23	0	17,19,21	0.48	0

In the following table, the Chirals column lists the number of chiral outliers, the number of chiral centers analysed, the number of these observed in the model and the number defined in the Chemical Component Dictionary. Similar counts are reported in the Torsion and Rings columns. '-' means no outliers of that kind were identified.

Mol	Type	Chain	Res	Link	Chirals	Torsions	Rings
8	NAG	B	1102	1	-	0/6/23/26	0/1/1/1
8	NAG	A	1103	1	-	1/6/23/26	0/1/1/1
8	NAG	A	1102	1	-	2/6/23/26	0/1/1/1

There are no bond length outliers.

There are no bond angle outliers.

There are no chirality outliers.

All (3) torsion outliers are listed below:

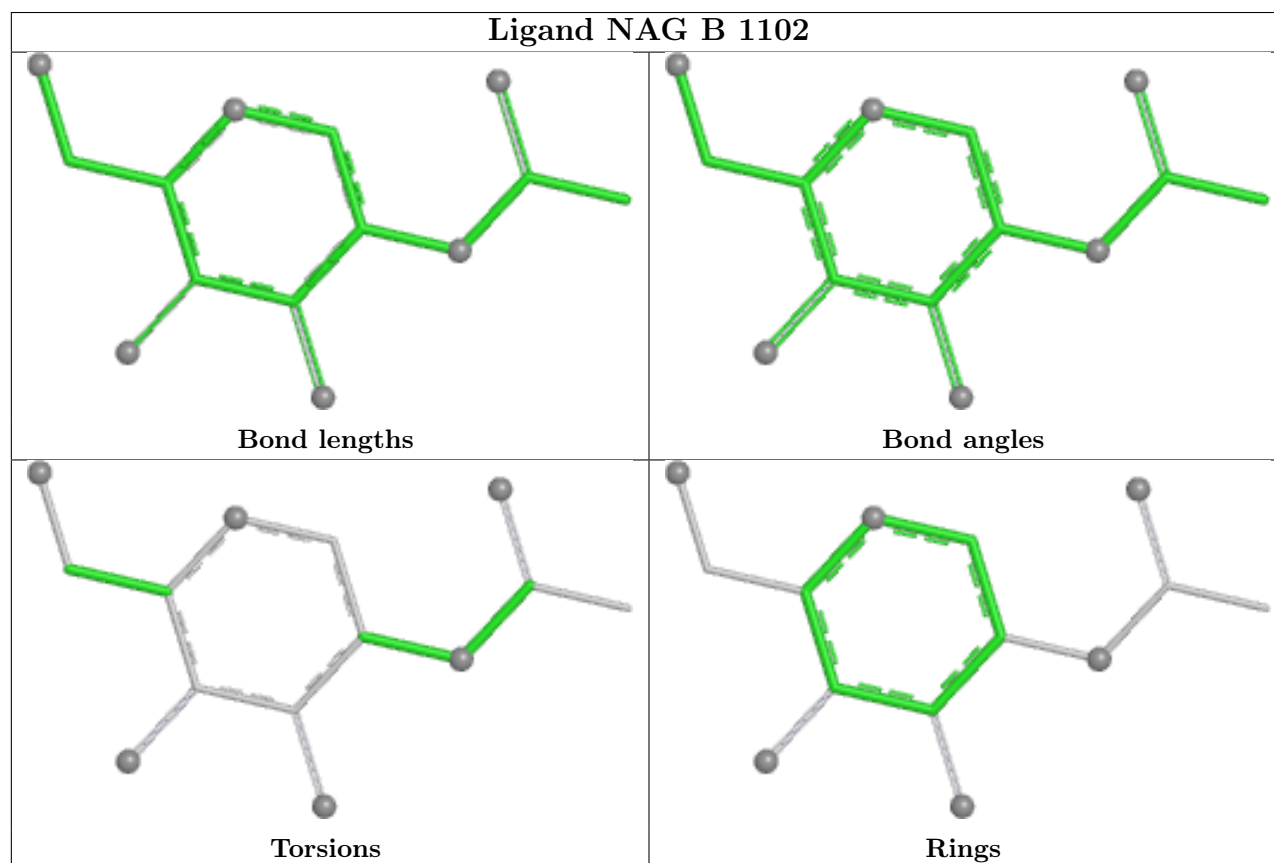
Mol	Chain	Res	Type	Atoms
8	A	1102	NAG	O5-C5-C6-O6
8	A	1102	NAG	C4-C5-C6-O6
8	A	1103	NAG	O5-C5-C6-O6

There are no ring outliers.

No monomer is involved in short contacts.

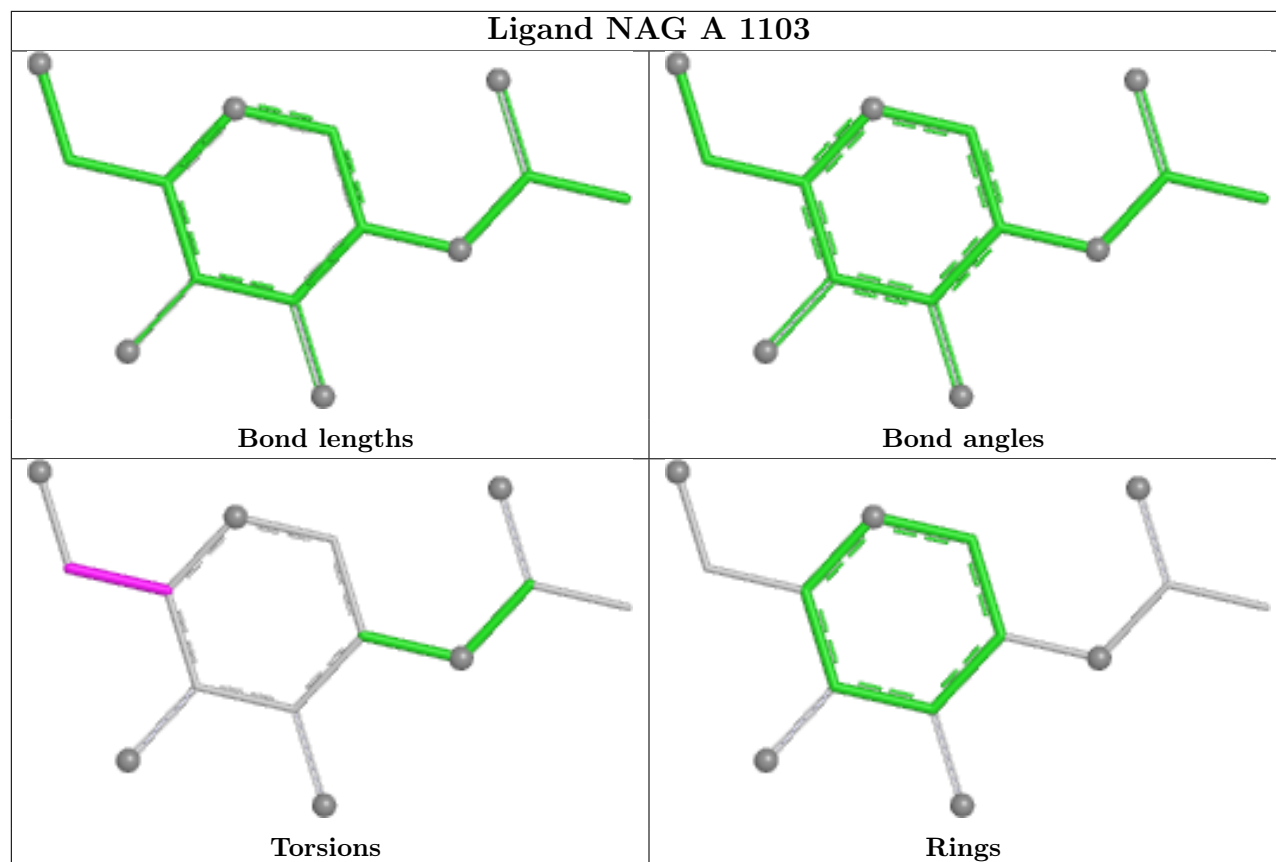
The following is a two-dimensional graphical depiction of Mogul quality analysis of bond lengths, bond angles, torsion angles, and ring geometry for all instances of the Ligand of Interest. In addition, ligands with molecular weight  $> 250$  and outliers as shown on the validation Tables will

also be included. For torsion angles, if less than 5% of the Mogul distribution of torsion angles is within 10 degrees of the torsion angle in question, then that torsion angle is considered an outlier. Any bond that is central to one or more torsion angles identified as an outlier by Mogul will be highlighted in the graph. For rings, the root-mean-square deviation (RMSD) between the ring in question and similar rings identified by Mogul is calculated over all ring torsion angles. If the average RMSD is greater than 60 degrees and the minimal RMSD between the ring in question and any Mogul-identified rings is also greater than 60 degrees, then that ring is considered an outlier. The outliers are highlighted in purple. The color gray indicates Mogul did not find sufficient equivalents in the CSD to analyse the geometry.

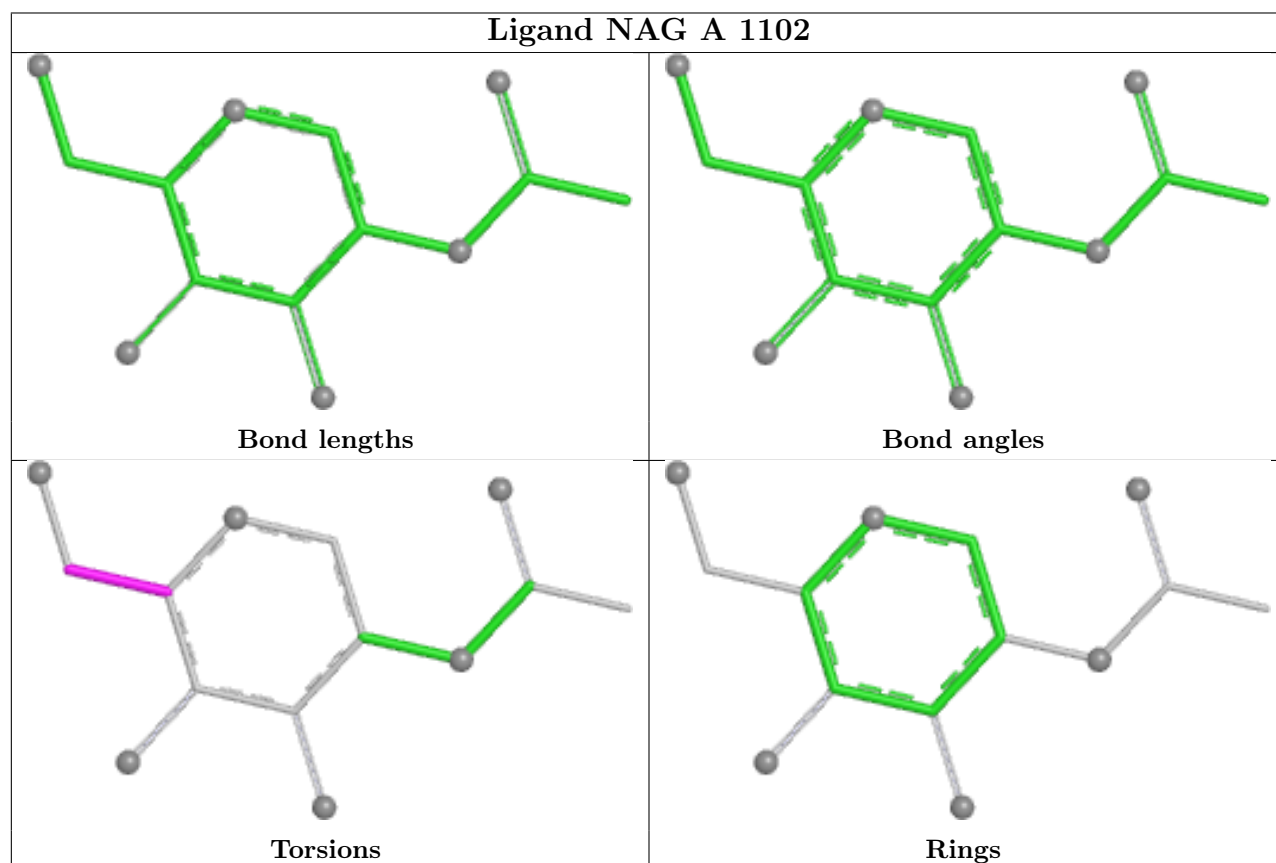




## Ligand NAG A 1103



## Ligand NAG A 1102



## 5.7 Other polymers

There are no such residues in this entry.

## 5.8 Polymer linkage issues

There are no chain breaks in this entry.

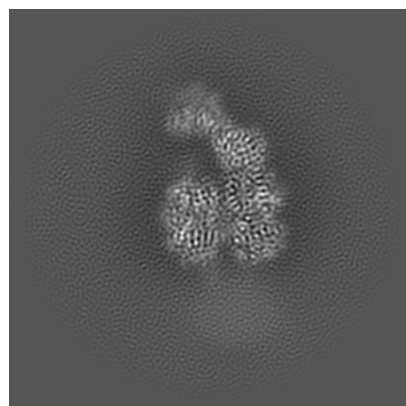
## 6 Map visualisation [i](#)

This section contains visualisations of the EMDB entry EMD-47330. These allow visual inspection of the internal detail of the map and identification of artifacts.

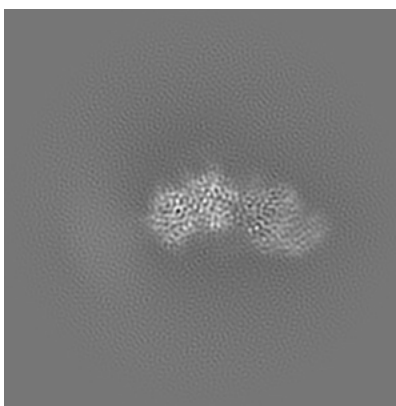
Images derived from a raw map, generated by summing the deposited half-maps, are presented below the corresponding image components of the primary map to allow further visual inspection and comparison with those of the primary map.

### 6.1 Orthogonal projections [i](#)

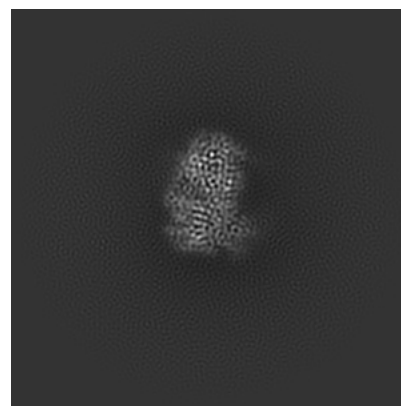
#### 6.1.1 Primary map



X

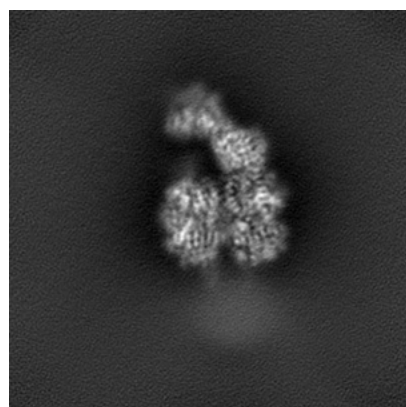


Y

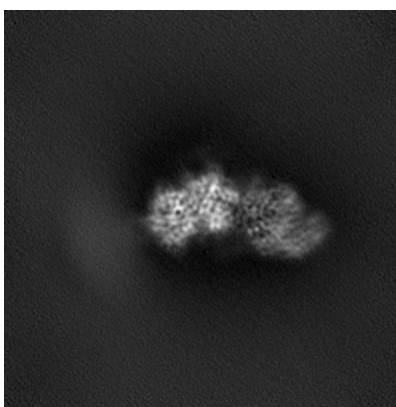


Z

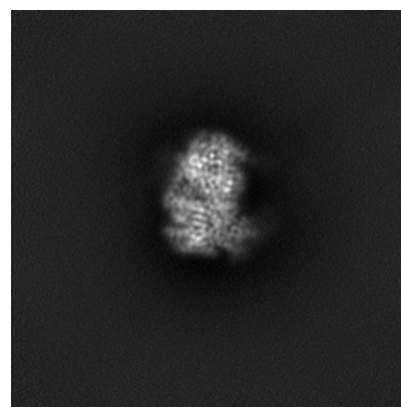
#### 6.1.2 Raw map



X



Y

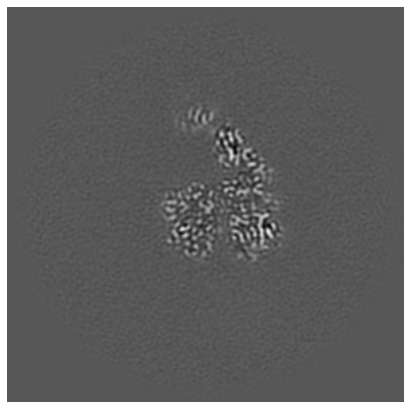


Z

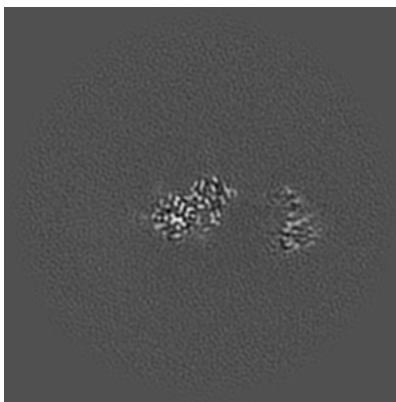
The images above show the map projected in three orthogonal directions.

## 6.2 Central slices [i](#)

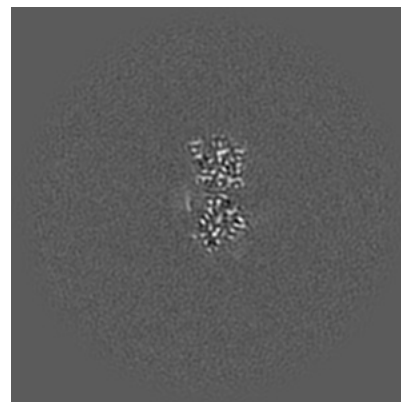
### 6.2.1 Primary map



X Index: 128

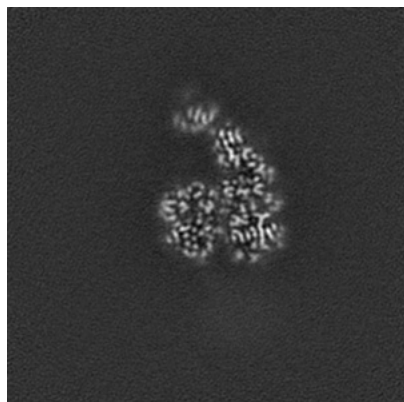


Y Index: 128

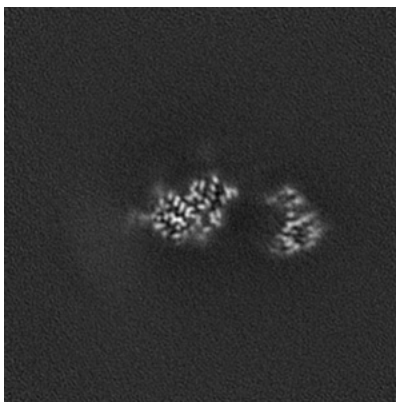


Z Index: 128

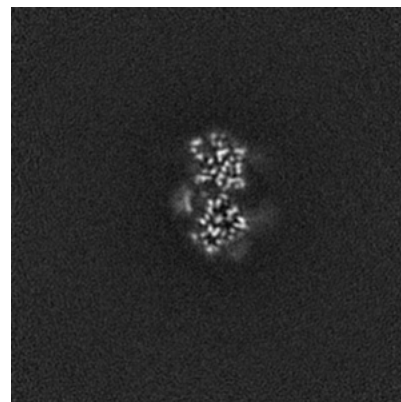
### 6.2.2 Raw map



X Index: 128



Y Index: 128

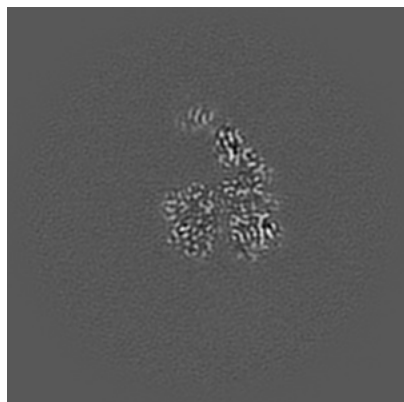


Z Index: 128

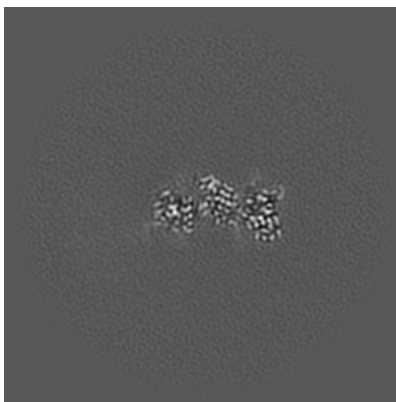
The images above show central slices of the map in three orthogonal directions.

## 6.3 Largest variance slices [i](#)

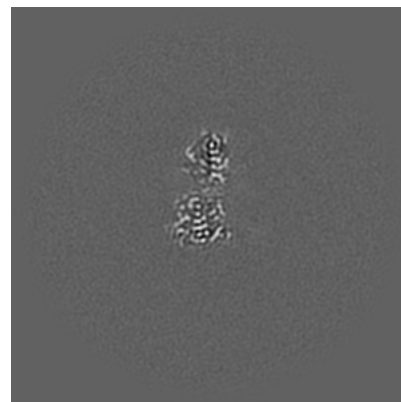
### 6.3.1 Primary map



X Index: 128

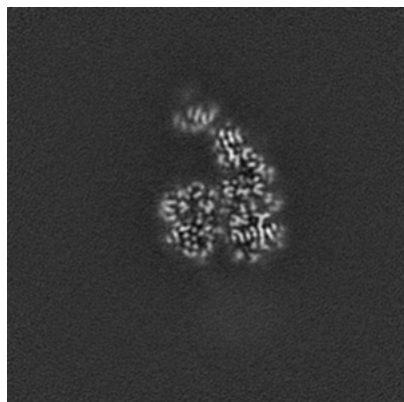


Y Index: 150

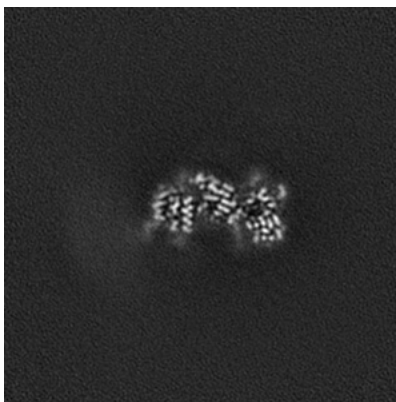


Z Index: 111

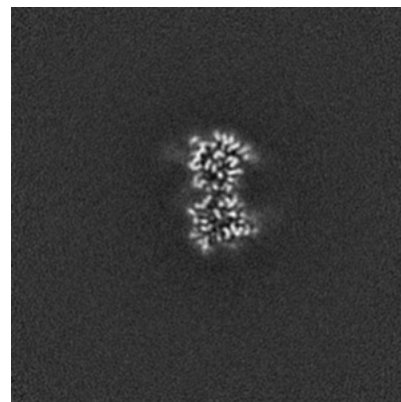
### 6.3.2 Raw map



X Index: 128



Y Index: 149

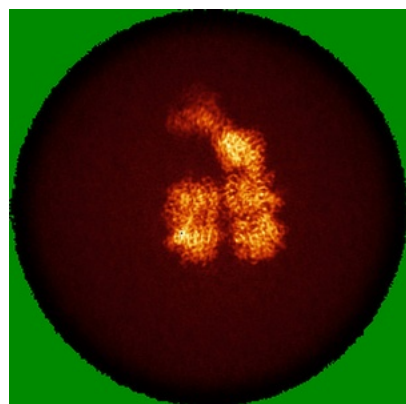


Z Index: 133

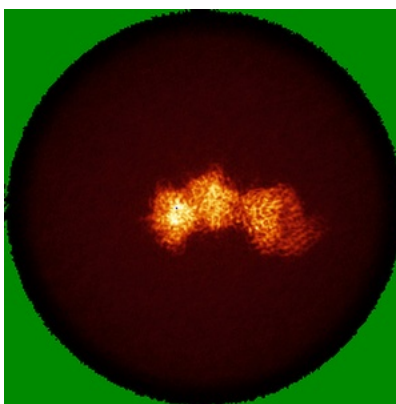
The images above show the largest variance slices of the map in three orthogonal directions.

## 6.4 Orthogonal standard-deviation projections (False-color) [i](#)

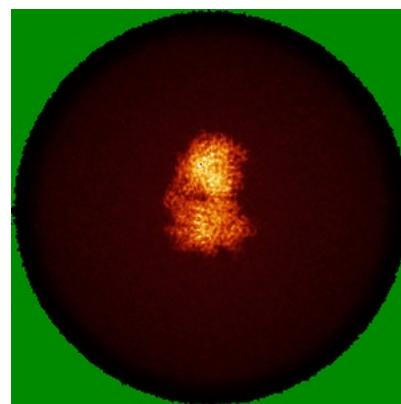
### 6.4.1 Primary map



X

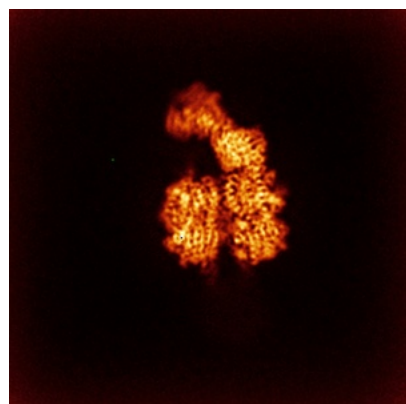


Y

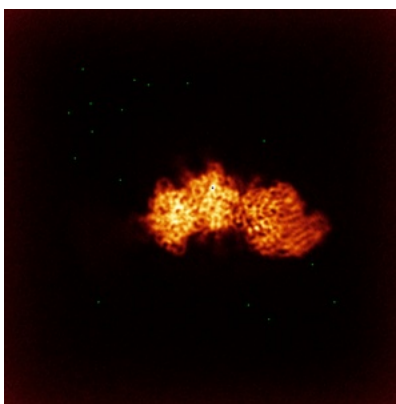


Z

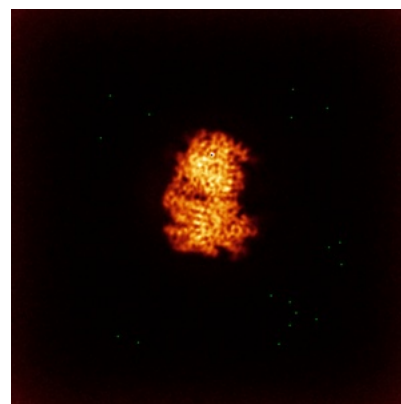
### 6.4.2 Raw map



X



Y



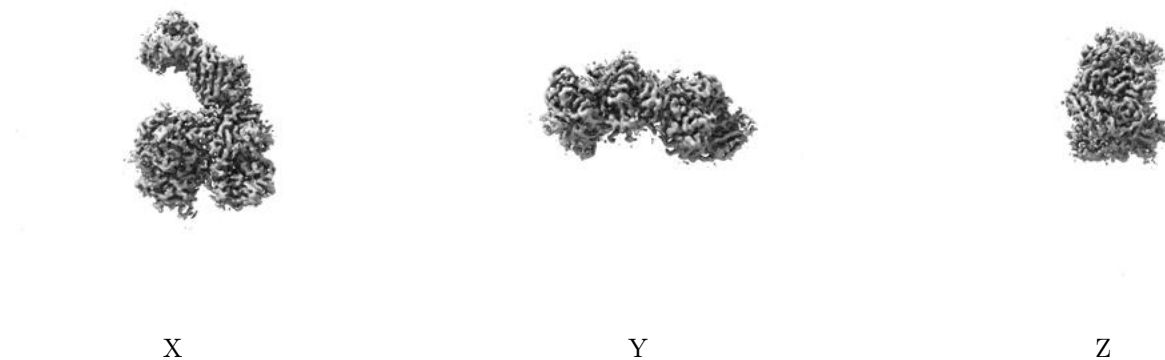
Z

The images above show the map standard deviation projections with false color in three orthogonal directions. Minimum values are shown in green, max in blue, and dark to light orange shades represent small to large values respectively.



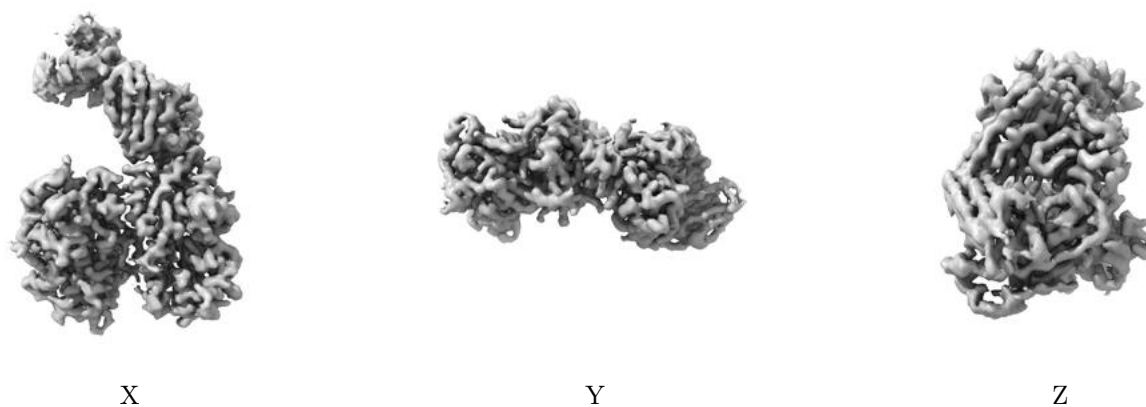
## 6.5 Orthogonal surface views [i](#)

### 6.5.1 Primary map



The images above show the 3D surface view of the map at the recommended contour level 0.6. These images, in conjunction with the slice images, may facilitate assessment of whether an appropriate contour level has been provided.

### 6.5.2 Raw map



These images show the 3D surface of the raw map. The raw map's contour level was selected so that its surface encloses the same volume as the primary map does at its recommended contour level.

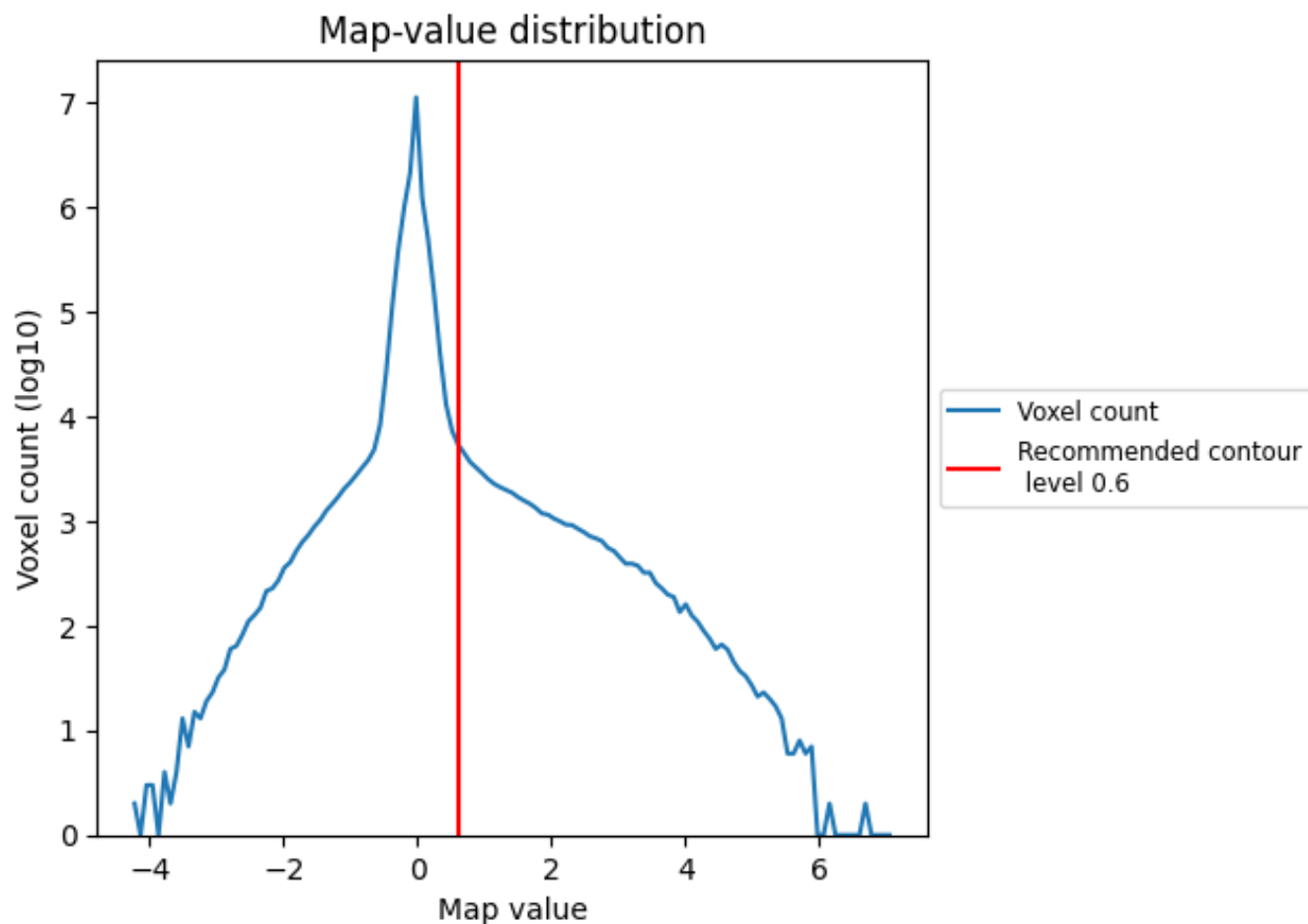
## 6.6 Mask visualisation [i](#)

This section was not generated. No masks/segmentation were deposited.

## 7 Map analysis [i](#)

This section contains the results of statistical analysis of the map.

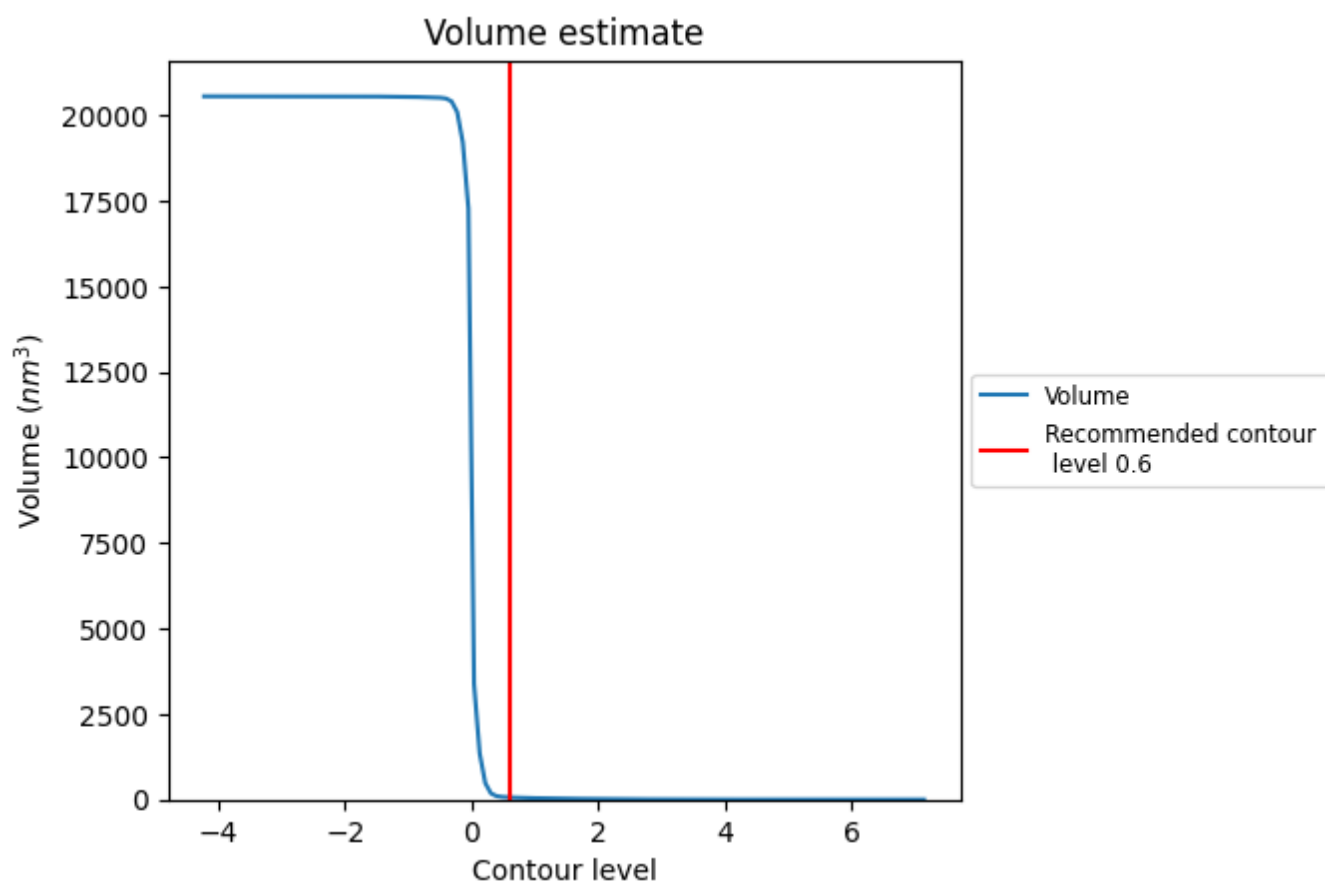
### 7.1 Map-value distribution [i](#)



The map-value distribution is plotted in 128 intervals along the x-axis. The y-axis is logarithmic. A spike in this graph at zero usually indicates that the volume has been masked.



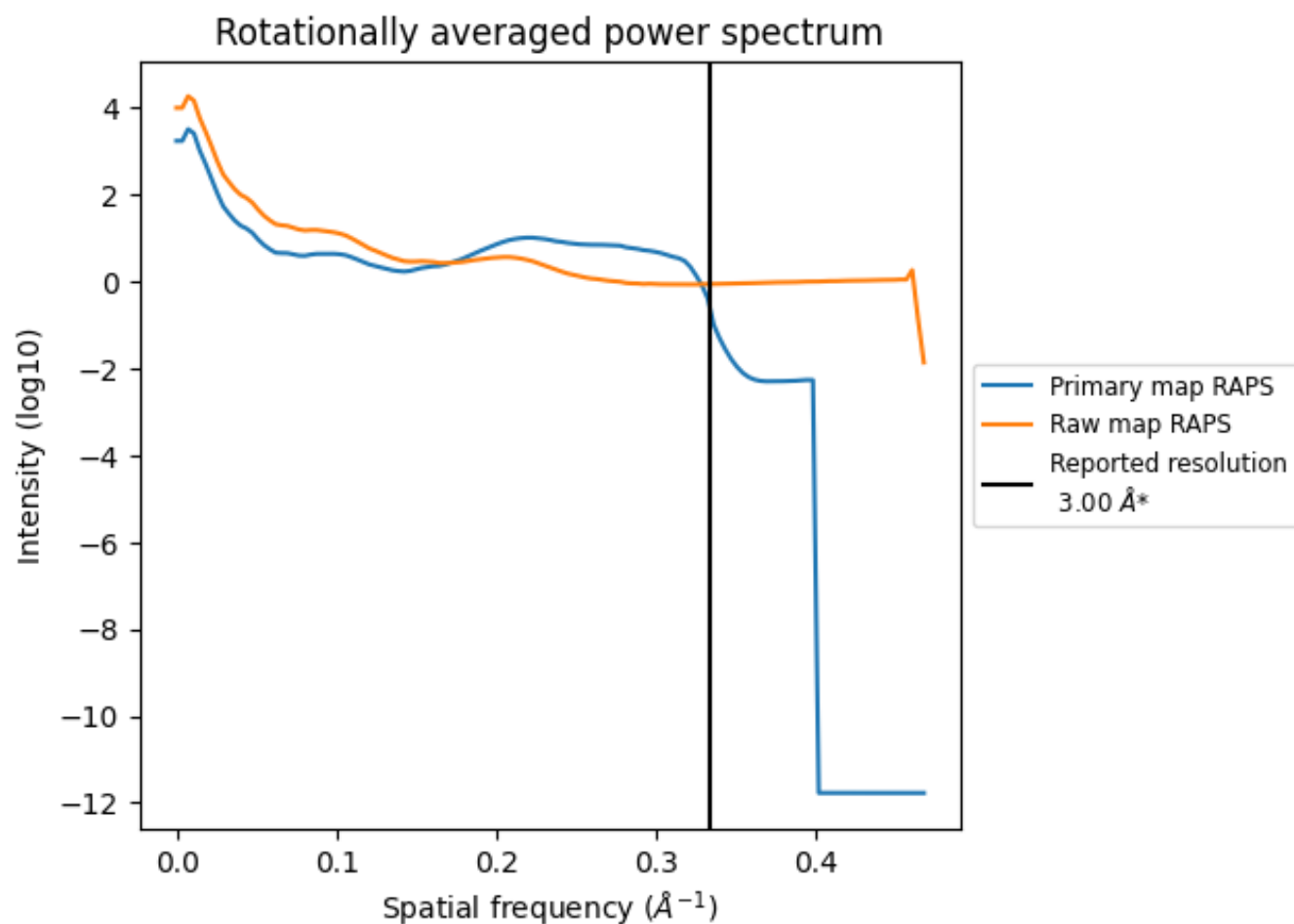
## 7.2 Volume estimate [i](#)



The volume at the recommended contour level is 64 nm<sup>3</sup>; this corresponds to an approximate mass of 58 kDa.

The volume estimate graph shows how the enclosed volume varies with the contour level. The recommended contour level is shown as a vertical line and the intersection between the line and the curve gives the volume of the enclosed surface at the given level.

### 7.3 Rotationally averaged power spectrum ⓘ

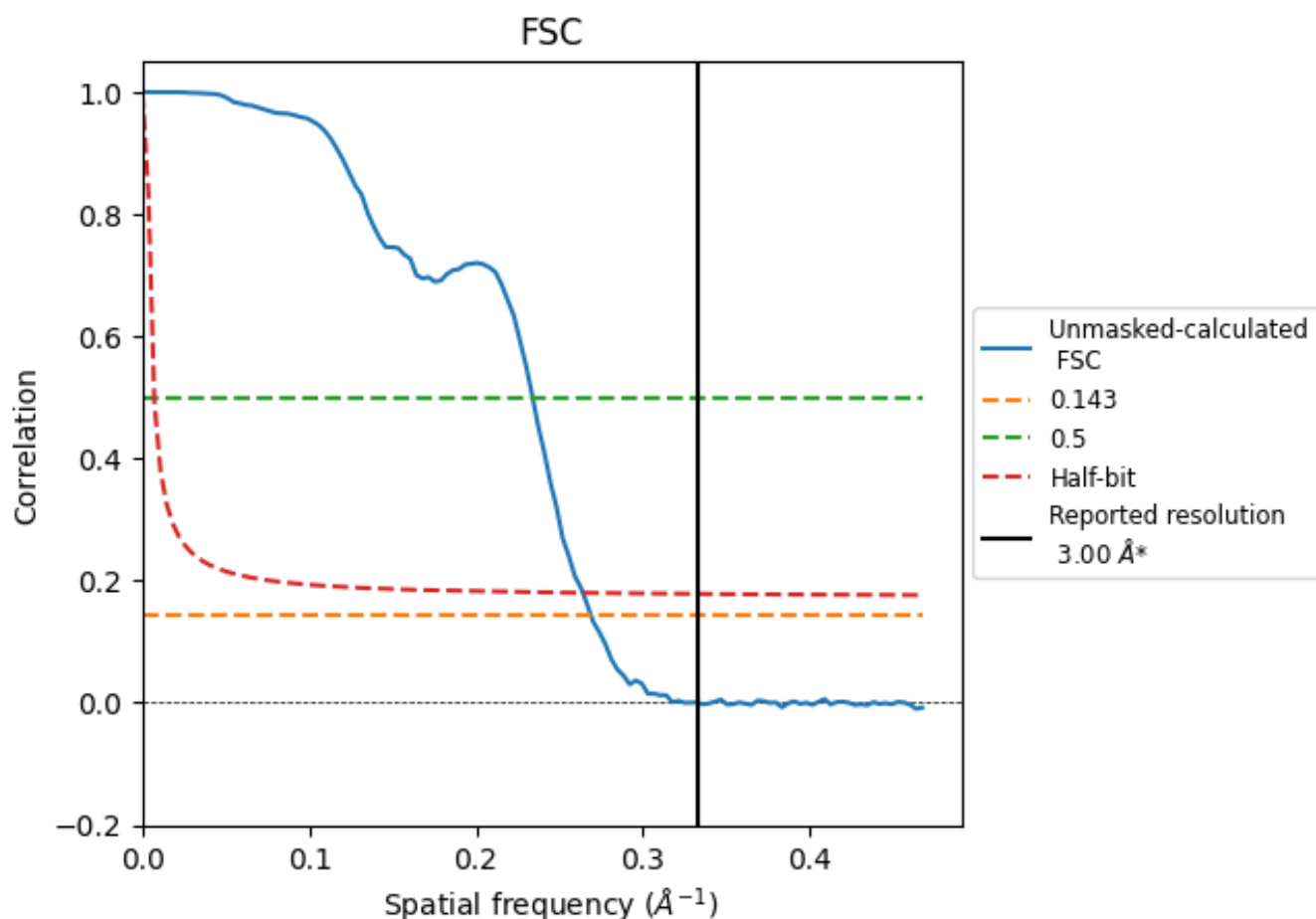


\*Reported resolution corresponds to spatial frequency of 0.333 Å<sup>-1</sup>

## 8 Fourier-Shell correlation [i](#)

Fourier-Shell Correlation (FSC) is the most commonly used method to estimate the resolution of single-particle and subtomogram-averaged maps. The shape of the curve depends on the imposed symmetry, mask and whether or not the two 3D reconstructions used were processed from a common reference. The reported resolution is shown as a black line. A curve is displayed for the half-bit criterion in addition to lines showing the 0.143 gold standard cut-off and 0.5 cut-off.

### 8.1 FSC [i](#)



\*Reported resolution corresponds to spatial frequency of 0.333  $\text{\AA}^{-1}$

## 8.2 Resolution estimates [i](#)

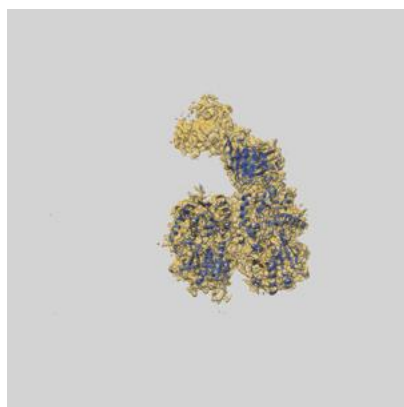
Resolution estimate (Å)	Estimation criterion (FSC cut-off)		
	0.143	0.5	Half-bit
Reported by author	3.00	-	-
Author-provided FSC curve	-	-	-
Unmasked-calculated*	3.72	4.28	3.79

\*Resolution estimate based on FSC curve calculated by comparison of deposited half-maps. The value from deposited half-maps intersecting FSC 0.143 CUT-OFF 3.72 differs from the reported value 3.0 by more than 10 %

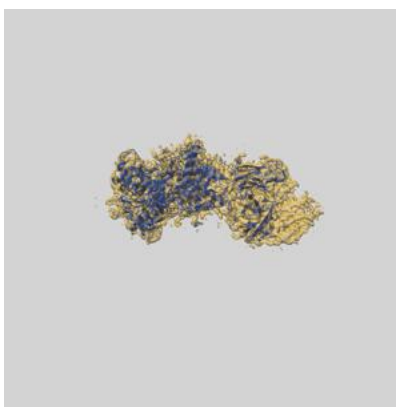
## 9 Map-model fit [i](#)

This section contains information regarding the fit between EMDB map EMD-47330 and PDB model 9DZH. Per-residue inclusion information can be found in [section 3](#) on [page 7](#).

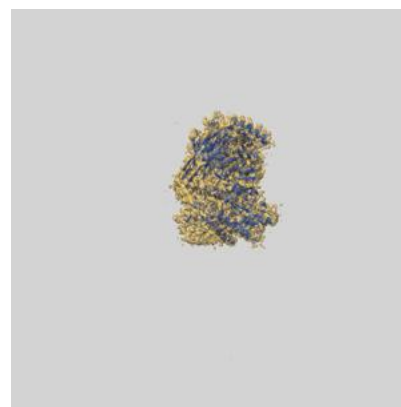
### 9.1 Map-model overlay [i](#)



X



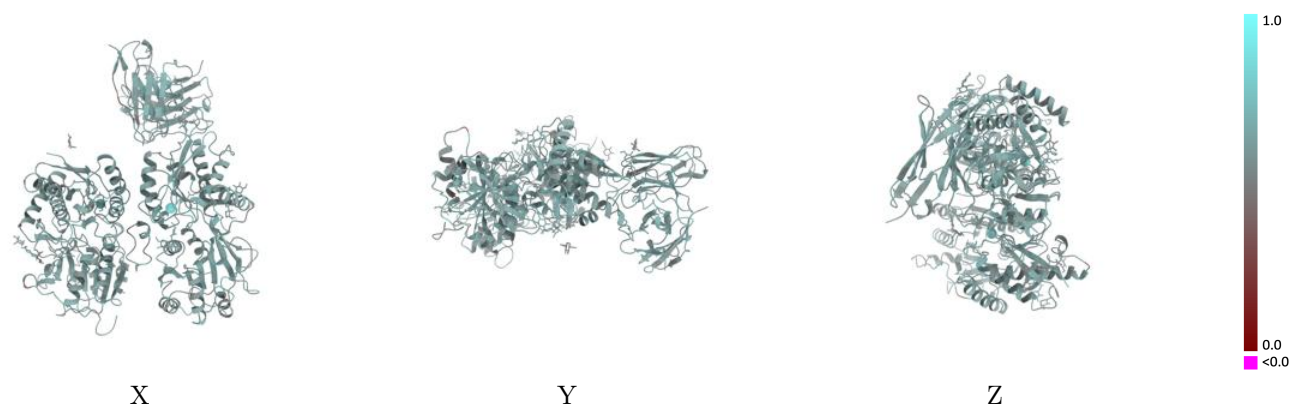
Y



Z

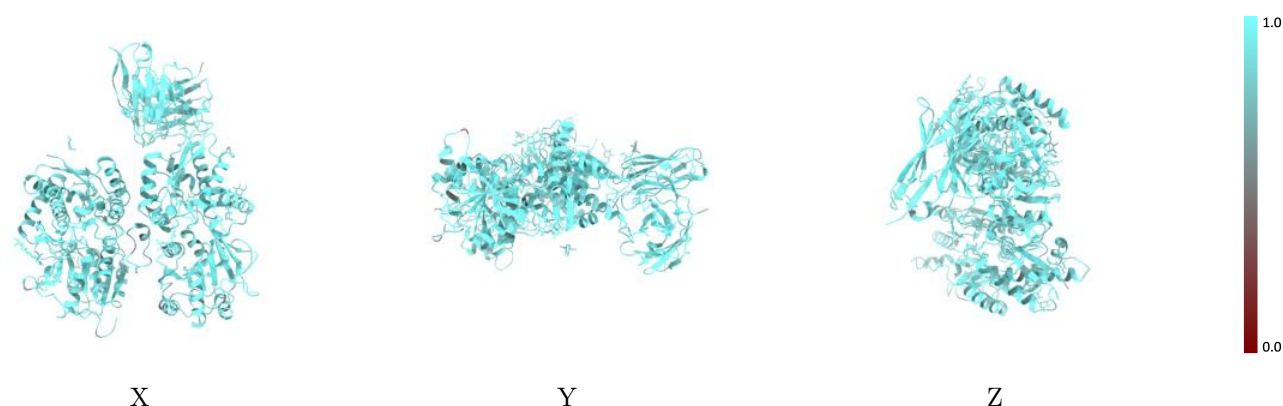
The images above show the 3D surface view of the map at the recommended contour level 0.6 at 50% transparency in yellow overlaid with a ribbon representation of the model coloured in blue. These images allow for the visual assessment of the quality of fit between the atomic model and the map.

## 9.2 Q-score mapped to coordinate model [i](#)



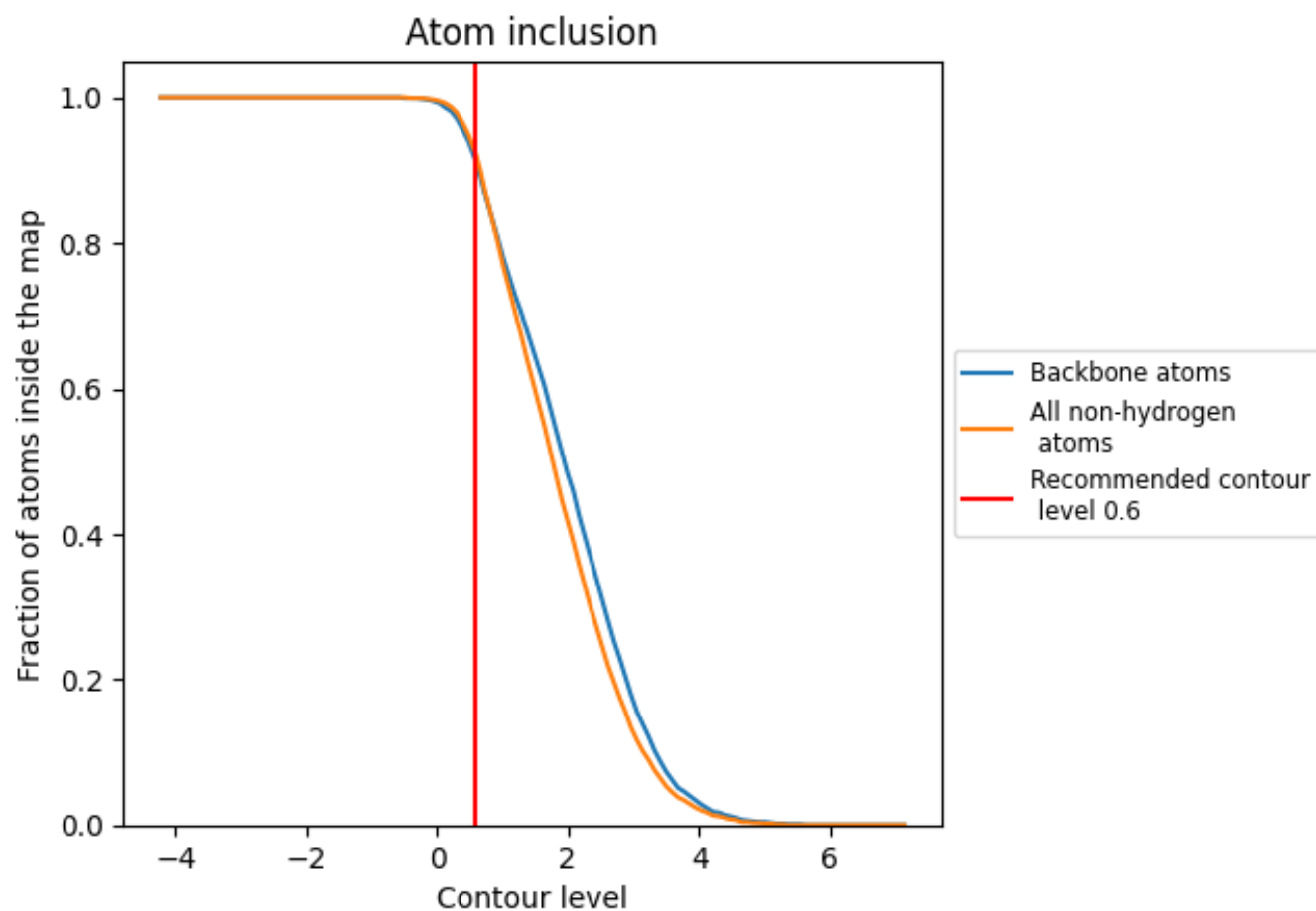
The images above show the model with each residue coloured according its Q-score. This shows their resolvability in the map with higher Q-score values reflecting better resolvability. Please note: Q-score is calculating the resolvability of atoms, and thus high values are only expected at resolutions at which atoms can be resolved. Low Q-score values may therefore be expected for many entries.

## 9.3 Atom inclusion mapped to coordinate model [i](#)



The images above show the model with each residue coloured according to its atom inclusion. This shows to what extent they are inside the map at the recommended contour level (0.6).

## 9.4 Atom inclusion [i](#)



At the recommended contour level, 91% of all backbone atoms, 92% of all non-hydrogen atoms, are inside the map.

9.5 Map-model fit summary ⓘ

The table lists the average atom inclusion at the recommended contour level (0.6) and Q-score for the entire model and for each chain.

Chain	Atom inclusion	Q-score
All	<div><div></div></div> 0.9220	<div><div></div></div> 0.5850
A	<div><div></div></div> 0.9210	<div><div></div></div> 0.5860
B	<div><div></div></div> 0.9250	<div><div></div></div> 0.5870
C	<div><div></div></div> 0.8550	<div><div></div></div> 0.5380
D	<div><div></div></div> 0.8570	<div><div></div></div> 0.5370
E	<div><div></div></div> 0.9230	<div><div></div></div> 0.5510
F	<div><div></div></div> 0.9290	<div><div></div></div> 0.5790
G	<div><div></div></div> 0.9490	<div><div></div></div> 0.5630
H	<div><div></div></div> 0.9340	<div><div></div></div> 0.5880
I	<div><div></div></div> 0.7860	<div><div></div></div> 0.5340
L	<div><div></div></div> 0.9200	<div><div></div></div> 0.5780

1.0

0.0

<0.0