



Full wwPDB X-ray Structure Validation Report ⓘ

Mar 6, 2026 – 02:13 AM UTC

PDB ID : 9DZA / pdb_00009dza
Title : Photoactivation in Bacteriophytochrome, high resolution cryo structure in the dark.
Authors : Malla, T.N.; Stojkovic, E.A.; Schmidt, M.
Deposited on : 2024-10-15
Resolution : 1.40 Å(reported)

This is a Full wwPDB X-ray Structure Validation Report for a publicly released PDB entry.

We welcome your comments at validation@mail.wwpdb.org

A user guide is available at

<https://www.wwpdb.org/validation/2017/XrayValidationReportHelp>

with specific help available everywhere you see the ⓘ symbol.

The types of validation reports are described at

<http://www.wwpdb.org/validation/2017/FAQs#types>.

The following versions of software and data (see [references ⓘ](#)) were used in the production of this report:

MolProbity	:	4-5-2 with Phenix2.0
Mogul	:	2022.3.0, CSD as543be (2022)
Xtriage (Phenix)	:	2.0
EDS	:	3.0
Buster-report	:	wwPDB partial adaption of 1.1.7 (2018)
Percentile statistics	:	20250101.v01 (using entries in the PDB archive January 1st 2025)
CCP4	:	9.0.010 (Gargrove)
Density-Fitness	:	1.0.12
Ideal geometry (proteins)	:	Engh & Huber (2001)
Ideal geometry (DNA, RNA)	:	Parkinson et al. (1996)
Validation Pipeline (wwPDB-VP)	:	2.49

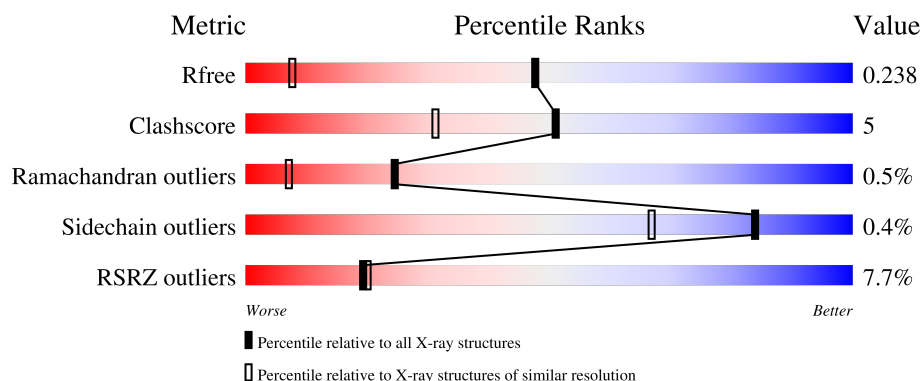
1 Overall quality at a glance

The following experimental techniques were used to determine the structure:

X-RAY DIFFRACTION

The reported resolution of this entry is 1.40 Å.

Percentile scores (ranging between 0-100) for global validation metrics of the entry are shown in the following graphic. The table shows the number of entries on which the scores are based.



Metric	Whole archive (#Entries)	Similar resolution (#Entries, resolution range(Å))
R_{free}	180053	2563 (1.40-1.40)
Clashscore	190562	2660 (1.40-1.40)
Ramachandran outliers	187476	2611 (1.40-1.40)
Sidechain outliers	187428	2610 (1.40-1.40)
RSRZ outliers	180081	2561 (1.40-1.40)

The table below summarises the geometric issues observed across the polymeric chains and their fit to the electron density. The red, orange, yellow and green segments of the lower bar indicate the fraction of residues that contain outliers for ≥ 3 , 2, 1 and 0 types of geometric quality criteria respectively. A grey segment represents the fraction of residues that are not modelled. The numeric value for each fraction is indicated below the corresponding segment, with a dot representing fractions $\leq 5\%$. The upper red bar (where present) indicates the fraction of residues that have poor fit to the electron density. The numeric value is given above the bar.

Mol	Chain	Length	Quality of chain
1	A	482	<div> <div>8%</div> <div>90%</div> <div>10%</div> </div>
1	B	482	<div> <div>7%</div> <div>89%</div> <div>11%</div> </div>

2 Entry composition [i](#)

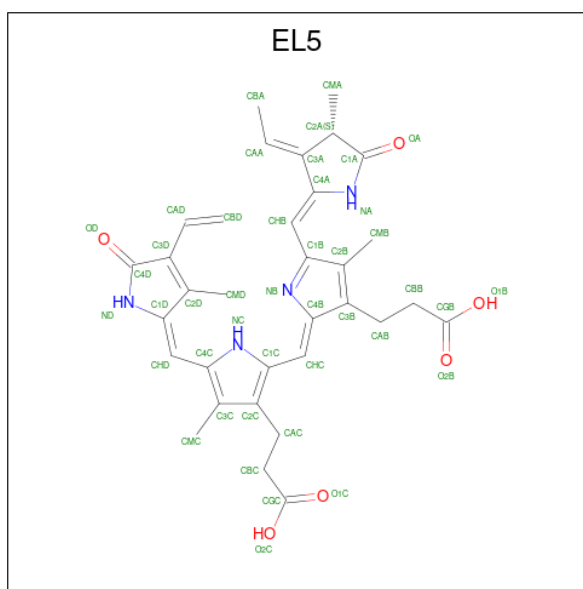
There are 4 unique types of molecules in this entry. The entry contains 8660 atoms, of which 0 are hydrogens and 0 are deuteriums.

In the tables below, the ZeroOcc column contains the number of atoms modelled with zero occupancy, the AltConf column contains the number of residues with at least one atom in alternate conformation and the Trace column contains the number of residues modelled with at most 2 atoms.

- Molecule 1 is a protein called Photoreceptor-histidine kinase BphP.

Mol	Chain	Residues	Atoms					ZeroOcc	AltConf	Trace
1	A	482	Total	C	N	O	S	0	0	0
			3661	2319	666	666	10			
1	B	482	Total	C	N	O	S	0	0	0
			3661	2319	666	666	10			

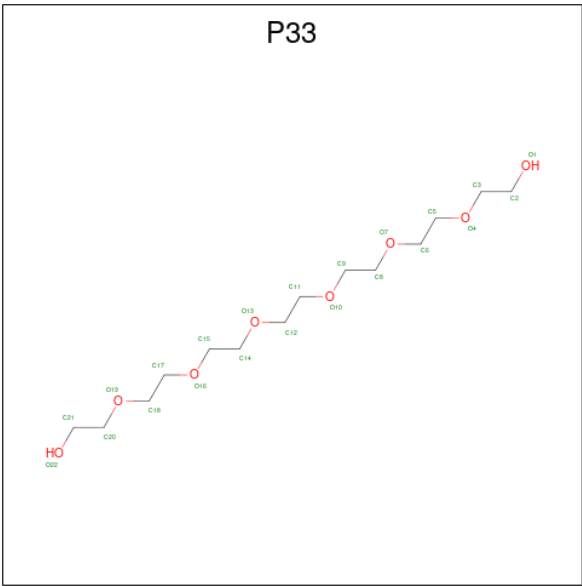
- Molecule 2 is 3-[(2Z)-2-({3-(2-carboxyethyl)-5-[(E)-(4-ethenyl-3-methyl-5-oxo-1,5-dihydro-2H-pyrrol-2-ylidene)methyl]-4-methyl-1H-pyrrol-2-yl}methylidene)-5-{(Z)-[(3E,4S)-3-ethylidene-4-methyl-5-oxopyrrolidin-2-ylidene]methyl}-4-methyl-2H-pyrrol-3-yl]propanoic acid (CCD ID: EL5) (formula: C₃₃H₃₆N₄O₆) (labeled as "Ligand of Interest" by depositor).



Mol	Chain	Residues	Atoms				ZeroOcc	AltConf
2	A	1	Total	C	N	O	0	0
			43	33	4	6		
2	B	1	Total	C	N	O	0	0
			43	33	4	6		

- Molecule 3 is 3,6,9,12,15,18-HEXA OXAICOSANE-1,20-DIOL (CCD ID: P33) (formula:

C₁₄H₃₀O₈) (labeled as "Ligand of Interest" by depositor).



Mol	Chain	Residues	Atoms			ZeroOcc	AltConf
3	A	1	Total	C	O	0	0
			22	14	8		

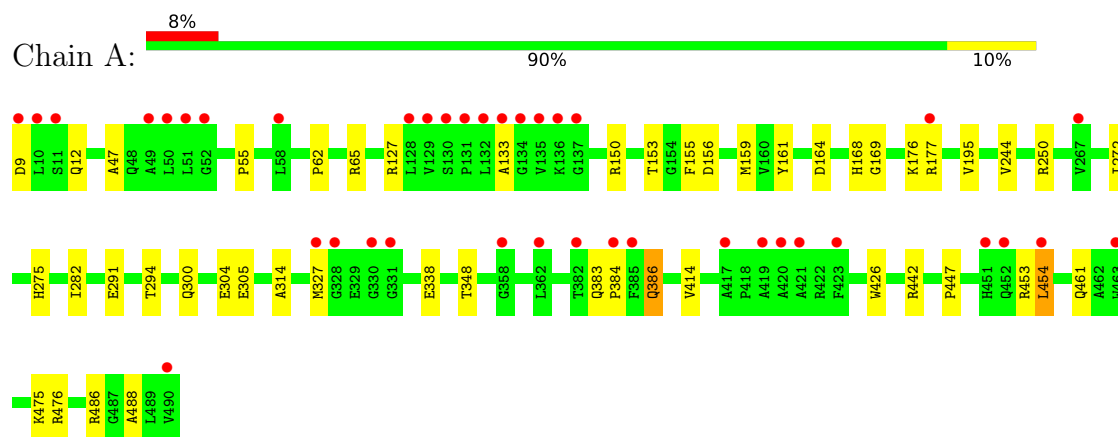
- Molecule 4 is water.

Mol	Chain	Residues	Atoms		ZeroOcc	AltConf
4	A	645	Total	O	0	0
			645	645		
4	B	585	Total	O	0	0
			585	585		

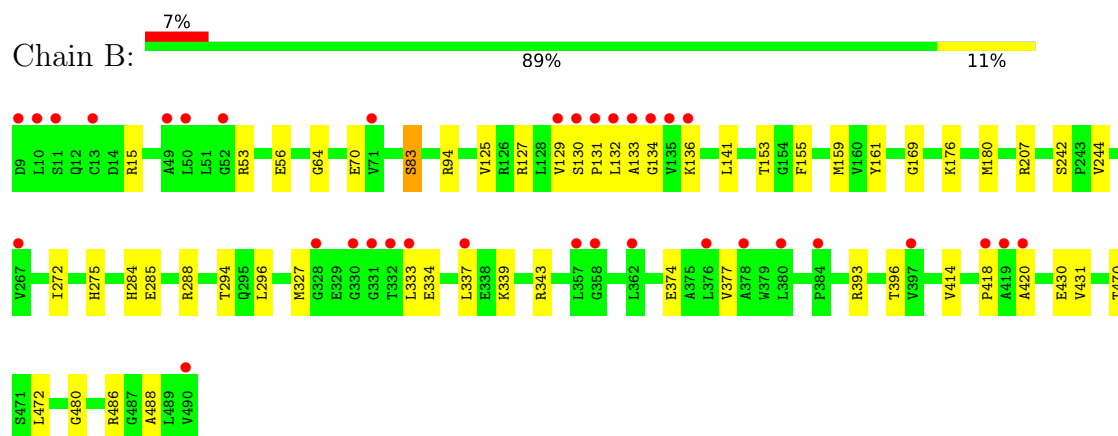
3 Residue-property plots

These plots are drawn for all protein, RNA, DNA and oligosaccharide chains in the entry. The first graphic for a chain summarises the proportions of the various outlier classes displayed in the second graphic. The second graphic shows the sequence view annotated by issues in geometry and electron density. Residues are color-coded according to the number of geometric quality criteria for which they contain at least one outlier: green = 0, yellow = 1, orange = 2 and red = 3 or more. A red dot above a residue indicates a poor fit to the electron density ($RSRZ > 2$). Stretches of 2 or more consecutive residues without any outlier are shown as a green connector. Residues present in the sample, but not in the model, are shown in grey.

• Molecule 1: Photoreceptor-histidine kinase BphP



• Molecule 1: Photoreceptor-histidine kinase BphP



4 Data and refinement statistics

Property	Value	Source
Space group	P 1 21 1	Depositor
Cell constants a, b, c, α , β , γ	82.33Å 81.69Å 83.49Å 90.00° 107.07° 90.00°	Depositor
Resolution (Å)	56.68 – 1.40 56.68 – 1.40	Depositor EDS
% Data completeness (in resolution range)	87.1 (56.68-1.40) 92.6 (56.68-1.40)	Depositor EDS
R_{merge}	(Not available)	Depositor
R_{sym}	(Not available)	Depositor
$\langle I/\sigma(I) \rangle$ ¹	1.31 (at 1.40Å)	Xtriage
Refinement program	PHENIX 1.21_5207	Depositor
R, R_{free}	0.195 , 0.245 0.187 , 0.238	Depositor DCC
R_{free} test set	9613 reflections (4.63%)	wwPDB-VP
Wilson B-factor (Å ²)	16.7	Xtriage
Anisotropy	0.049	Xtriage
Bulk solvent k_{sol} (e/Å ³), B_{sol} (Å ²)	0.37 , 60.5	EDS
L-test for twinning ²	$\langle L \rangle = 0.45$, $\langle L^2 \rangle = 0.28$	Xtriage
Estimated twinning fraction	0.029 for l,-k,h	Xtriage
F_o, F_c correlation	0.96	EDS
Total number of atoms	8660	wwPDB-VP
Average B, all atoms (Å ²)	27.0	wwPDB-VP

Xtriage's analysis on translational NCS is as follows: *The largest off-origin peak in the Patterson function is 13.45% of the height of the origin peak. No significant pseudotranslation is detected.*

¹Intensities estimated from amplitudes.

²Theoretical values of $\langle |L| \rangle$, $\langle L^2 \rangle$ for acentric reflections are 0.5, 0.333 respectively for untwinned datasets, and 0.375, 0.2 for perfectly twinned datasets.

5 Model quality

5.1 Standard geometry

Bond lengths and bond angles in the following residue types are not validated in this section: EL5, P33

The Z score for a bond length (or angle) is the number of standard deviations the observed value is removed from the expected value. A bond length (or angle) with $|Z| > 5$ is considered an outlier worth inspection. RMSZ is the root-mean-square of all Z scores of the bond lengths (or angles).

Mol	Chain	Bond lengths		Bond angles	
		RMSZ	# Z >5	RMSZ	# Z >5
1	A	0.23	0/3742	0.44	0/5104
1	B	0.23	0/3742	0.43	0/5104
All	All	0.23	0/7484	0.44	0/10208

There are no bond length outliers.

There are no bond angle outliers.

There are no chirality outliers.

There are no planarity outliers.

5.2 Too-close contacts

In the following table, the Non-H and H(model) columns list the number of non-hydrogen atoms and hydrogen atoms in the chain respectively. The H(added) column lists the number of hydrogen atoms added and optimized by MolProbity. The Clashes column lists the number of clashes within the asymmetric unit, whereas Symm-Clashes lists symmetry-related clashes.

Mol	Chain	Non-H	H(model)	H(added)	Clashes	Symm-Clashes
1	A	3661	0	3703	37	0
1	B	3661	0	3703	40	1
2	A	43	0	0	0	0
2	B	43	0	0	0	0
3	A	22	0	30	2	0
4	A	645	0	0	19	1
4	B	585	0	0	15	1
All	All	8660	0	7436	77	2

The all-atom clashscore is defined as the number of clashes found per 1000 atoms (including hydrogen atoms). The all-atom clashscore for this structure is 5.

All (77) close contacts within the same asymmetric unit are listed below, sorted by their clash magnitude.

Atom-1	Atom-2	Interatomic distance (Å)	Clash overlap (Å)
1:B:374:GLU:O	4:B:601:HOH:O	1.86	0.92
1:A:314:ALA:HA	3:A:502:P33:H62	1.64	0.79
1:B:285:GLU:OE2	4:B:602:HOH:O	2.04	0.74
1:A:12:GLN:NE2	4:A:603:HOH:O	2.21	0.73
1:A:272:ILE:HD12	1:A:294:THR:HG22	1.74	0.67
1:B:272:ILE:HD12	1:B:294:THR:HG22	1.77	0.66
1:B:127:ARG:NH2	4:B:609:HOH:O	2.27	0.66
1:A:300:GLN:OE1	4:A:601:HOH:O	2.13	0.66
1:B:333:LEU:HG	1:B:337:LEU:HD11	1.78	0.65
1:A:461:GLN:NE2	4:A:615:HOH:O	2.30	0.64
1:A:164:ASP:OD1	4:A:602:HOH:O	2.15	0.62
1:B:136:LYS:O	4:B:603:HOH:O	2.16	0.61
1:B:53:ARG:NH2	4:B:615:HOH:O	2.34	0.61
1:A:127:ARG:NH2	4:A:619:HOH:O	2.31	0.60
1:B:333:LEU:O	1:B:337:LEU:HG	2.02	0.58
1:B:134:GLY:HA3	1:B:141:LEU:HG	1.86	0.58
1:A:62:PRO:HG2	1:A:65:ARG:HG2	1.84	0.58
1:B:94:ARG:NH2	4:B:602:HOH:O	2.30	0.57
1:B:343:ARG:NH2	4:B:619:HOH:O	2.37	0.56
1:B:414:VAL:HB	1:B:486:ARG:HD2	1.91	0.53
1:B:15:ARG:NH1	4:B:623:HOH:O	2.41	0.53
1:A:414:VAL:HB	1:A:486:ARG:HD2	1.91	0.53
1:B:334:GLU:H	1:B:334:GLU:CD	2.18	0.52
1:A:150:ARG:HH11	1:A:177:ARG:HH21	1.57	0.52
1:A:327:MET:HE1	1:A:488:ALA:HB1	1.93	0.51
1:B:242:SER:OG	1:B:244:VAL:HG12	2.10	0.51
1:B:56:GLU:H	1:B:56:GLU:CD	2.19	0.51
1:A:176:LYS:NZ	4:A:635:HOH:O	2.44	0.50
1:B:393:ARG:NH2	4:B:624:HOH:O	2.41	0.50
1:A:250:ARG:HG2	4:A:661:HOH:O	2.11	0.50
1:B:159:MET:HE1	1:B:275:HIS:CE1	2.47	0.50
1:B:176:LYS:HE2	1:B:180:MET:O	2.12	0.49
1:A:127:ARG:NH1	4:A:636:HOH:O	2.45	0.49
1:B:129:VAL:HB	1:B:296:LEU:HD21	1.94	0.49
1:A:153:THR:HB	1:A:155:PHE:HD1	1.76	0.49
1:B:393:ARG:NH2	4:B:630:HOH:O	2.45	0.49
1:A:156:ASP:OD1	1:A:177:ARG:HD2	2.11	0.49
1:A:475:LYS:HG3	1:A:476:ARG:N	2.28	0.49
1:A:386:GLN:HB2	4:A:710:HOH:O	2.13	0.48
1:B:430:GLU:OE1	4:B:605:HOH:O	2.19	0.48

Continued on next page...

Continued from previous page...

Atom-1	Atom-2	Interatomic distance (Å)	Clash overlap (Å)
3:A:502:P33:H91	1:B:480:GLY:HA3	1.96	0.47
1:B:64:GLY:O	4:B:606:HOH:O	2.20	0.47
1:A:475:LYS:HE2	4:A:1025:HOH:O	2.13	0.47
1:B:130:SER:O	4:B:607:HOH:O	2.20	0.47
1:A:161:TYR:CZ	1:A:169:GLY:HA3	2.50	0.47
1:A:244:VAL:HG23	4:A:629:HOH:O	2.14	0.47
1:A:9:ASP:CG	1:A:195:VAL:HG11	2.40	0.46
1:A:348:THR:HG1	1:A:426:TRP:CD1	2.33	0.46
1:B:125:VAL:O	1:B:129:VAL:HG12	2.16	0.45
1:B:130:SER:O	1:B:132:LEU:N	2.49	0.45
1:A:47:ALA:HB3	1:A:55:PRO:HB3	1.99	0.45
1:B:393:ARG:HG3	1:B:470:THR:HG22	1.99	0.45
1:A:177:ARG:HE	1:A:177:ARG:HB3	1.53	0.45
1:A:133:ALA:HB3	1:A:300:GLN:NE2	2.32	0.44
1:B:339:LYS:HB3	1:B:339:LYS:HE3	1.77	0.44
1:A:442:ARG:NH2	4:A:642:HOH:O	2.51	0.44
1:A:305:GLU:HG3	4:A:948:HOH:O	2.17	0.44
1:B:393:ARG:HE	1:B:396:THR:HG23	1.82	0.43
1:A:348:THR:HG1	1:A:426:TRP:CG	2.36	0.43
1:A:453:ARG:HG3	4:A:638:HOH:O	2.17	0.43
1:B:377:VAL:N	4:B:601:HOH:O	2.52	0.43
1:B:161:TYR:CZ	1:B:169:GLY:HA3	2.54	0.43
1:A:447:PRO:HA	1:A:454:LEU:HA	2.00	0.42
1:B:431:VAL:HG21	1:B:472:LEU:HG	2.01	0.42
1:A:304:GLU:HG2	4:A:601:HOH:O	2.19	0.42
1:B:327:MET:HE1	1:B:488:ALA:HB1	2.00	0.42
4:A:624:HOH:O	1:B:418:PRO:HD3	2.18	0.42
1:B:284:HIS:NE2	1:B:288:ARG:HD2	2.35	0.42
1:A:159:MET:HE1	1:A:275:HIS:CE1	2.55	0.42
1:A:383:GLN:O	4:A:604:HOH:O	2.22	0.42
1:A:291:GLU:OE1	4:A:605:HOH:O	2.22	0.42
1:B:334:GLU:OE2	4:B:608:HOH:O	2.21	0.41
1:A:338:GLU:HG2	4:A:1041:HOH:O	2.19	0.41
1:A:155:PHE:HE1	1:A:282:ILE:HG13	1.86	0.41
1:B:83:SER:OG	1:B:94:ARG:NH1	2.53	0.41
1:B:130:SER:HB2	1:B:133:ALA:HB2	2.03	0.40
1:B:153:THR:HB	1:B:155:PHE:HD2	1.86	0.40

All (2) symmetry-related close contacts are listed below. The label for Atom-2 includes the symmetry operator and encoded unit-cell translations to be applied.

Atom-1	Atom-2	Interatomic distance (Å)	Clash overlap (Å)
4:B:603:HOH:O	4:B:710:HOH:O[2_454]	2.05	0.15
1:B:70:GLU:O	4:A:1108:HOH:O[2_545]	2.12	0.08

5.3 Torsion angles [i](#)

5.3.1 Protein backbone [i](#)

In the following table, the Percentiles column shows the percent Ramachandran outliers of the chain as a percentile score with respect to all X-ray entries followed by that with respect to entries of similar resolution.

The Analysed column shows the number of residues for which the backbone conformation was analysed, and the total number of residues.

Mol	Chain	Analysed	Favoured	Allowed	Outliers	Percentiles	
1	A	480/482 (100%)	467 (97%)	10 (2%)	3 (1%)	21	5
1	B	480/482 (100%)	459 (96%)	19 (4%)	2 (0%)	30	10
All	All	960/964 (100%)	926 (96%)	29 (3%)	5 (0%)	24	7

All (5) Ramachandran outliers are listed below:

Mol	Chain	Res	Type
1	B	131	PRO
1	A	386	GLN
1	A	454	LEU
1	B	420	ALA
1	A	384	PRO

5.3.2 Protein sidechains [i](#)

In the following table, the Percentiles column shows the percent sidechain outliers of the chain as a percentile score with respect to all X-ray entries followed by that with respect to entries of similar resolution.

The Analysed column shows the number of residues for which the sidechain conformation was analysed, and the total number of residues.

Mol	Chain	Analysed	Rotameric	Outliers	Percentiles	
1	A	375/375 (100%)	374 (100%)	1 (0%)	86	70
1	B	375/375 (100%)	373 (100%)	2 (0%)	81	61

Continued on next page...

Continued from previous page...

Mol	Chain	Analysed	Rotameric	Outliers	Percentiles	
All	All	750/750 (100%)	747 (100%)	3 (0%)	84	67

All (3) residues with a non-rotameric sidechain are listed below:

Mol	Chain	Res	Type
1	A	168	HIS
1	B	83	SER
1	B	207	ARG

Sometimes sidechains can be flipped to improve hydrogen bonding and reduce clashes. All (1) such sidechains are listed below:

Mol	Chain	Res	Type
1	A	12	GLN

5.3.3 RNA [i](#)

There are no RNA molecules in this entry.

5.4 Non-standard residues in protein, DNA, RNA chains [i](#)

There are no non-standard protein/DNA/RNA residues in this entry.

5.5 Carbohydrates [i](#)

There are no oligosaccharides in this entry.

5.6 Ligand geometry [i](#)

3 ligands are modelled in this entry.

In the following table, the Counts columns list the number of bonds (or angles) for which Mogul statistics could be retrieved, the number of bonds (or angles) that are observed in the model and the number of bonds (or angles) that are defined in the Chemical Component Dictionary. The Link column lists molecule types, if any, to which the group is linked. The Z score for a bond length (or angle) is the number of standard deviations the observed value is removed from the expected value. A bond length (or angle) with $|Z| > 2$ is considered an outlier worth inspection. RMSZ is the root-mean-square of all Z scores of the bond lengths (or angles).

Mol	Type	Chain	Res	Link	Bond lengths			Bond angles		
					Counts	RMSZ	# Z > 2	Counts	RMSZ	# Z > 2
2	EL5	B	501	-	46,46,46	3.57	20 (43%)	58,67,67	1.53	10 (17%)
2	EL5	A	501	-	46,46,46	3.60	18 (39%)	58,67,67	1.65	13 (22%)
3	P33	A	502	-	21,21,21	1.61	7 (33%)	20,20,20	0.47	0

In the following table, the Chirals column lists the number of chiral outliers, the number of chiral centers analysed, the number of these observed in the model and the number defined in the Chemical Component Dictionary. Similar counts are reported in the Torsion and Rings columns. '-' means no outliers of that kind were identified.

Mol	Type	Chain	Res	Link	Chirals	Torsions	Rings
2	EL5	B	501	-	-	8/26/74/74	0/4/4/4
2	EL5	A	501	-	-	8/26/74/74	0/4/4/4
3	P33	A	502	-	-	8/19/19/19	-

All (45) bond length outliers are listed below:

Mol	Chain	Res	Type	Atoms	Z	Observed(Å)	Ideal(Å)
2	A	501	EL5	C1A-NA	11.71	1.53	1.37
2	B	501	EL5	C1A-NA	11.51	1.52	1.37
2	A	501	EL5	C1D-ND	8.53	1.52	1.37
2	B	501	EL5	C4A-NA	8.52	1.52	1.37
2	A	501	EL5	C4A-NA	8.46	1.52	1.37
2	B	501	EL5	C1D-ND	8.45	1.52	1.37
2	B	501	EL5	C4B-NB	6.39	1.52	1.38
2	A	501	EL5	C4B-NB	6.33	1.52	1.38
2	A	501	EL5	C4D-ND	6.17	1.52	1.38
2	B	501	EL5	C4D-ND	5.95	1.51	1.38
2	A	501	EL5	C1B-NB	5.57	1.49	1.36
2	B	501	EL5	C1B-NB	5.46	1.49	1.36
2	B	501	EL5	CHD-C4C	5.46	1.52	1.40
2	A	501	EL5	CHD-C4C	5.38	1.52	1.40
2	B	501	EL5	CHC-C1C	4.98	1.51	1.40
2	B	501	EL5	CHB-C1B	4.89	1.51	1.40
2	A	501	EL5	CHB-C1B	4.72	1.51	1.40
2	A	501	EL5	CHC-C1C	4.71	1.51	1.40
2	A	501	EL5	C4B-C3B	4.37	1.52	1.45
2	A	501	EL5	C3B-C2B	4.29	1.46	1.36
2	B	501	EL5	C3B-C2B	4.22	1.45	1.36
2	B	501	EL5	C4B-C3B	4.17	1.52	1.45
2	B	501	EL5	CHB-C4A	-3.11	1.30	1.37
2	A	501	EL5	CHD-C1D	-3.09	1.30	1.37

Continued on next page...

Continued from previous page...

Mol	Chain	Res	Type	Atoms	Z	Observed(Å)	Ideal(Å)
2	A	501	EL5	CHB-C4A	-3.04	1.30	1.37
2	A	501	EL5	CHC-C4B	-2.95	1.33	1.38
2	B	501	EL5	C3D-C2D	2.84	1.42	1.37
2	B	501	EL5	OA-C1A	-2.83	1.18	1.23
3	A	502	P33	C14-C15	2.76	1.62	1.49
3	A	502	P33	C11-C12	2.73	1.62	1.49
2	A	501	EL5	C3D-C2D	2.71	1.42	1.37
2	A	501	EL5	OA-C1A	-2.65	1.18	1.23
2	B	501	EL5	CHC-C4B	-2.58	1.33	1.38
3	A	502	P33	C17-C18	2.51	1.61	1.49
3	A	502	P33	C5-C6	2.51	1.61	1.49
2	B	501	EL5	CHD-C1D	-2.50	1.31	1.37
2	A	501	EL5	OD-C4D	-2.45	1.18	1.23
3	A	502	P33	C3-C2	2.39	1.62	1.49
2	B	501	EL5	OD-C4D	-2.37	1.19	1.23
2	A	501	EL5	C1C-C2C	-2.33	1.37	1.42
3	A	502	P33	C20-C21	2.33	1.61	1.49
3	A	502	P33	C8-C9	2.26	1.60	1.49
2	B	501	EL5	C1D-C2D	2.07	1.48	1.45
2	B	501	EL5	C4A-C3A	2.04	1.48	1.45
2	B	501	EL5	CAD-C3D	2.03	1.52	1.47

All (23) bond angle outliers are listed below:

Mol	Chain	Res	Type	Atoms	Z	Observed(°)	Ideal(°)
2	A	501	EL5	CAA-C3A-C4A	-4.75	120.62	126.36
2	B	501	EL5	CAA-C3A-C4A	-3.83	121.73	126.36
2	B	501	EL5	C3B-C4B-NB	-3.83	104.63	110.04
2	B	501	EL5	C4B-C3B-C2B	3.74	110.77	106.73
2	A	501	EL5	CHC-C4B-NB	3.64	132.24	124.60
2	B	501	EL5	CHC-C4B-NB	3.34	131.61	124.60
2	A	501	EL5	CHB-C1B-NB	3.17	131.81	124.95
2	A	501	EL5	CAB-CBB-CGB	-3.11	105.42	113.67
2	A	501	EL5	C3B-C4B-NB	-3.07	105.70	110.04
2	A	501	EL5	C4B-C3B-C2B	2.90	109.86	106.73
2	B	501	EL5	CHB-C1B-NB	2.75	130.90	124.95
2	A	501	EL5	C1D-ND-C4D	-2.69	107.36	110.66
2	A	501	EL5	CMC-C3C-C4C	2.68	129.52	125.62
2	A	501	EL5	CHB-C1B-C2B	-2.65	118.07	124.87
2	B	501	EL5	CAB-CBB-CGB	-2.63	106.69	113.67
2	B	501	EL5	C3D-C2D-C1D	2.46	110.66	107.92
2	A	501	EL5	O2C-CGC-CBC	2.30	121.26	114.00

Continued on next page...

Continued from previous page...

Mol	Chain	Res	Type	Atoms	Z	Observed(°)	Ideal(°)
2	A	501	EL5	CHD-C4C-NC	-2.25	120.21	125.29
2	B	501	EL5	CHB-C1B-C2B	-2.23	119.15	124.87
2	A	501	EL5	C4D-C3D-C2D	2.19	110.73	107.92
2	B	501	EL5	O2C-CGC-CBC	2.15	120.80	114.00
2	B	501	EL5	CHD-C4C-NC	-2.14	120.46	125.29
2	A	501	EL5	C4C-CHD-C1D	-2.04	124.95	130.82

There are no chirality outliers.

All (24) torsion outliers are listed below:

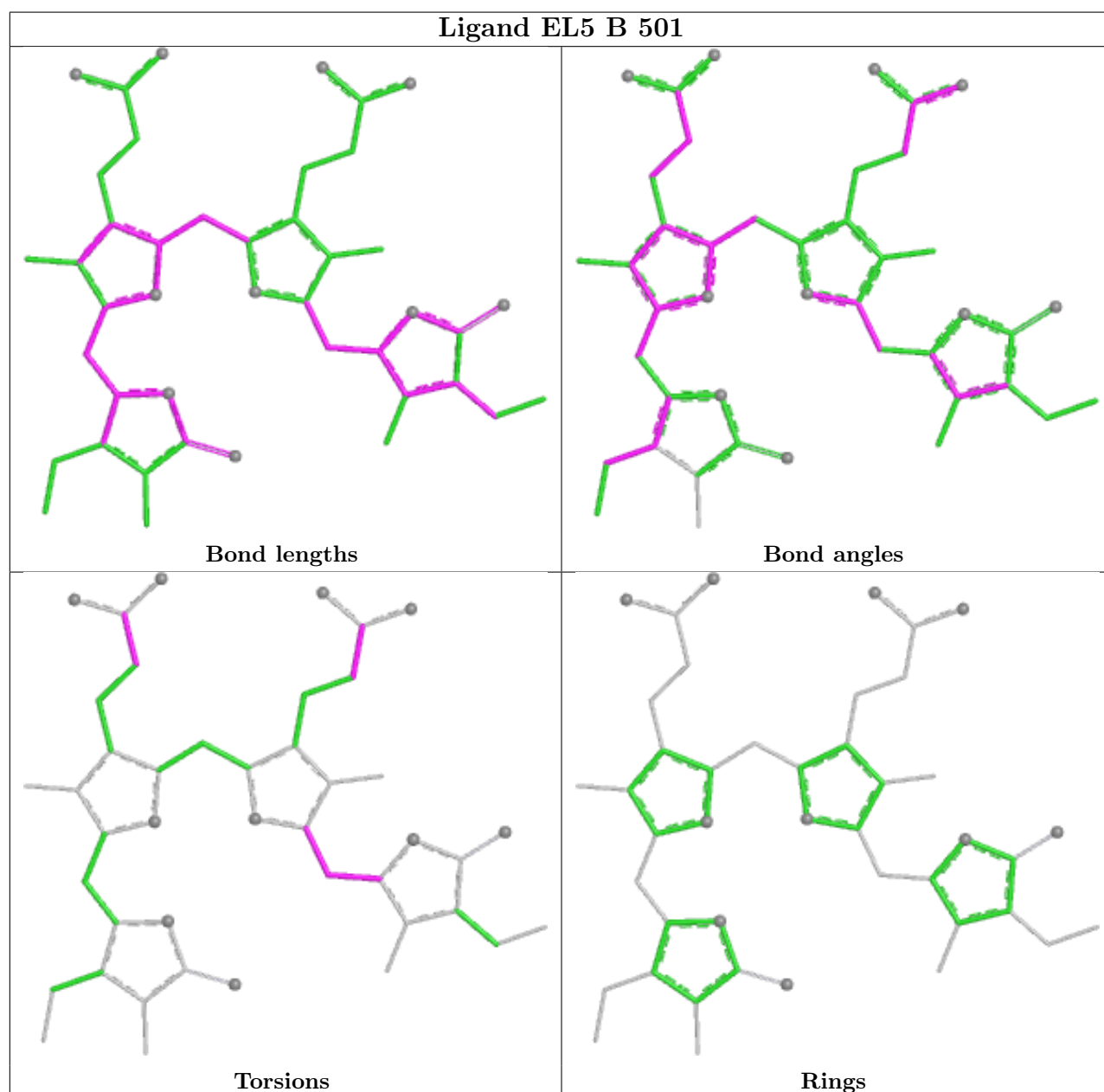
Mol	Chain	Res	Type	Atoms
2	A	501	EL5	NC-C4C-CHD-C1D
2	A	501	EL5	C3C-C4C-CHD-C1D
2	B	501	EL5	C3C-C4C-CHD-C1D
2	B	501	EL5	NC-C4C-CHD-C1D
3	A	502	P33	O7-C8-C9-O10
3	A	502	P33	O19-C20-C21-O22
2	A	501	EL5	ND-C1D-CHD-C4C
2	B	501	EL5	ND-C1D-CHD-C4C
3	A	502	P33	O4-C5-C6-O7
2	B	501	EL5	C2D-C1D-CHD-C4C
3	A	502	P33	C9-C8-O7-C6
2	A	501	EL5	C2D-C1D-CHD-C4C
3	A	502	P33	C15-C14-O13-C12
3	A	502	P33	C6-C5-O4-C3
2	B	501	EL5	CAB-CBB-CGB-O2B
2	A	501	EL5	CAB-CBB-CGB-O2B
2	B	501	EL5	CAC-CBC-CGC-O1C
3	A	502	P33	C14-C15-O16-C17
2	A	501	EL5	CAB-CBB-CGB-O1B
2	A	501	EL5	CAC-CBC-CGC-O1C
2	B	501	EL5	CAB-CBB-CGB-O1B
2	B	501	EL5	CAC-CBC-CGC-O2C
2	A	501	EL5	CAC-CBC-CGC-O2C
3	A	502	P33	C5-C6-O7-C8

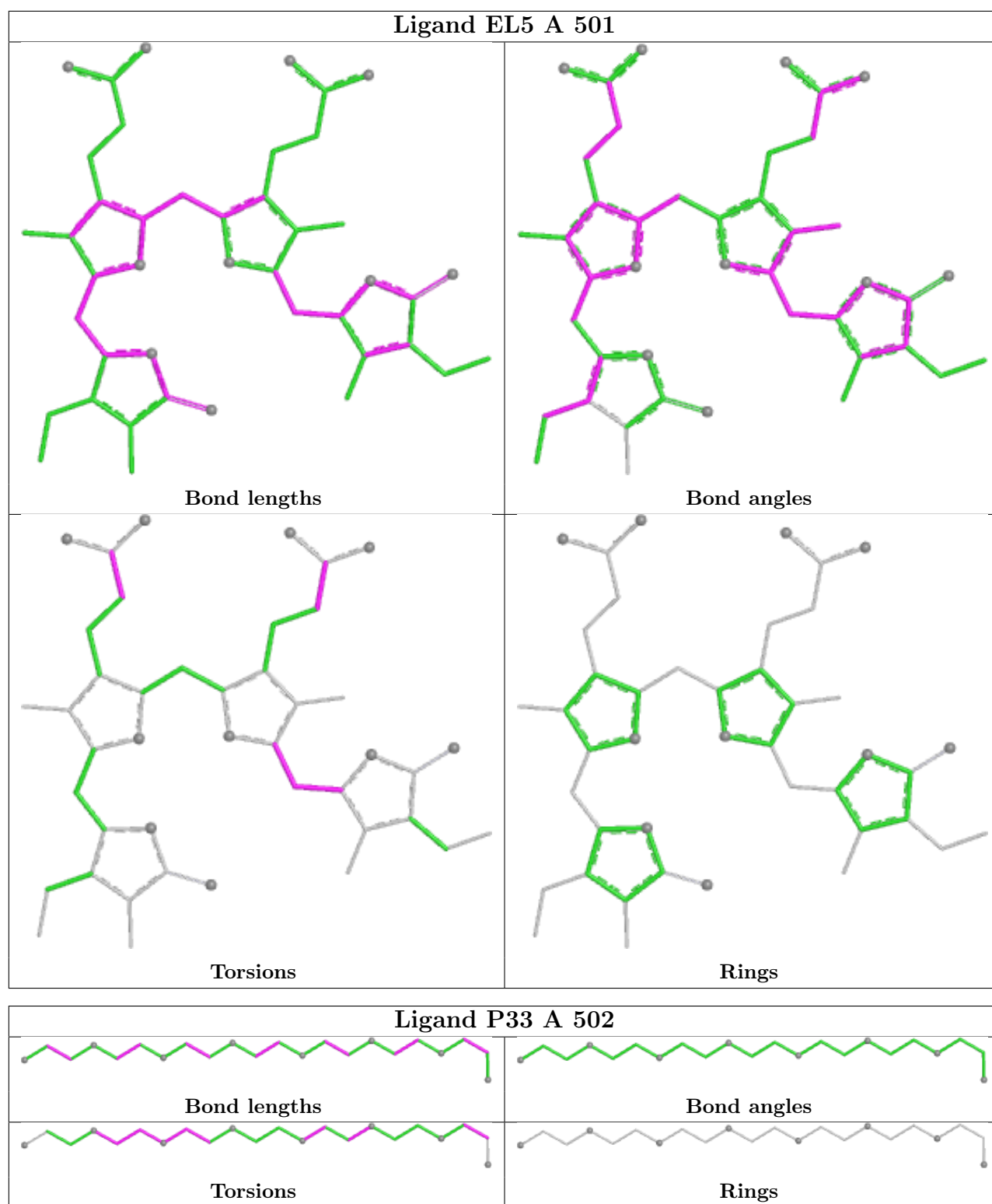
There are no ring outliers.

1 monomer is involved in 2 short contacts:

Mol	Chain	Res	Type	Clashes	Symm-Clashes
3	A	502	P33	2	0

The following is a two-dimensional graphical depiction of Mogul quality analysis of bond lengths, bond angles, torsion angles, and ring geometry for all instances of the Ligand of Interest. In addition, ligands with molecular weight > 250 and outliers as shown on the validation Tables will also be included. For torsion angles, if less than 5% of the Mogul distribution of torsion angles is within 10 degrees of the torsion angle in question, then that torsion angle is considered an outlier. Any bond that is central to one or more torsion angles identified as an outlier by Mogul will be highlighted in the graph. For rings, the root-mean-square deviation (RMSD) between the ring in question and similar rings identified by Mogul is calculated over all ring torsion angles. If the average RMSD is greater than 60 degrees and the minimal RMSD between the ring in question and any Mogul-identified rings is also greater than 60 degrees, then that ring is considered an outlier. The outliers are highlighted in purple. The color gray indicates Mogul did not find sufficient equivalents in the CSD to analyse the geometry.





5.7 Other polymers [i](#)

There are no such residues in this entry.

5.8 Polymer linkage issues ⓘ

There are no chain breaks in this entry.

6 Fit of model and data

6.1 Protein, DNA and RNA chains

In the following table, the column labelled ‘#RSRZ > 2’ contains the number (and percentage) of RSRZ outliers, followed by percent RSRZ outliers for the chain as percentile scores relative to all X-ray entries and entries of similar resolution. The OWAB column contains the minimum, median, 95th percentile and maximum values of the occupancy-weighted average B-factor per residue. The column labelled ‘Q < 0.9’ lists the number of (and percentage) of residues with an average occupancy less than 0.9.

Mol	Chain	Analysed	<RSRZ>	#RSRZ > 2		OWAB(Å ²)	Q < 0.9
1	A	482/482 (100%)	0.32	39 (8%)	18 18	13, 20, 45, 75	0
1	B	482/482 (100%)	0.39	35 (7%)	21 22	11, 21, 53, 87	0
All	All	964/964 (100%)	0.36	74 (7%)	19 20	11, 21, 48, 87	0

All (74) RSRZ outliers are listed below:

Mol	Chain	Res	Type	RSRZ
1	B	135	VAL	7.1
1	B	10	LEU	7.0
1	A	132	LEU	6.9
1	A	10	LEU	6.9
1	B	132	LEU	6.2
1	A	133	ALA	6.2
1	B	129	VAL	5.5
1	B	134	GLY	5.3
1	B	133	ALA	5.0
1	A	50	LEU	4.9
1	B	131	PRO	4.5
1	A	134	GLY	4.4
1	B	331	GLY	4.3
1	B	330	GLY	4.2
1	B	333	LEU	4.2
1	B	332	THR	4.1
1	A	135	VAL	3.9
1	B	9	ASP	3.7
1	B	419	ALA	3.7
1	A	131	PRO	3.7
1	B	50	LEU	3.7
1	A	419	ALA	3.7
1	B	49	ALA	3.6
1	B	136	LYS	3.6

Continued on next page...

Continued from previous page...

Mol	Chain	Res	Type	RSRZ
1	A	385	PHE	3.6
1	A	9	ASP	3.4
1	A	49	ALA	3.4
1	A	11	SER	3.3
1	B	358	GLY	3.3
1	B	420	ALA	3.3
1	A	129	VAL	3.2
1	A	417	ALA	3.2
1	A	328	GLY	3.2
1	A	420	ALA	3.2
1	A	52	GLY	3.1
1	B	130	SER	3.0
1	A	51	LEU	3.0
1	A	454	LEU	2.8
1	A	382	THR	2.8
1	A	128	LEU	2.8
1	B	380	LEU	2.7
1	A	384	PRO	2.7
1	B	328	GLY	2.6
1	A	130	SER	2.6
1	A	177	ARG	2.5
1	A	423	PHE	2.5
1	A	490	VAL	2.5
1	B	397	VAL	2.5
1	A	421	ALA	2.4
1	B	418	PRO	2.4
1	A	327	MET	2.4
1	B	378	ALA	2.4
1	A	452	GLN	2.4
1	A	331	GLY	2.4
1	A	358	GLY	2.4
1	B	490	VAL	2.4
1	B	11	SER	2.4
1	B	52	GLY	2.3
1	A	136	LYS	2.3
1	A	362	LEU	2.2
1	B	357	LEU	2.2
1	B	71	VAL	2.2
1	B	384	PRO	2.2
1	A	451	HIS	2.2
1	A	58	LEU	2.1
1	A	267	VAL	2.1

Continued on next page...

Continued from previous page...

Mol	Chain	Res	Type	RSRZ
1	A	330	GLY	2.1
1	B	267	VAL	2.0
1	B	337	LEU	2.0
1	B	13	CYS	2.0
1	A	137	GLY	2.0
1	A	463	TRP	2.0
1	B	362	LEU	2.0
1	B	376	LEU	2.0

6.2 Non-standard residues in protein, DNA, RNA chains [i](#)

There are no non-standard protein/DNA/RNA residues in this entry.

6.3 Carbohydrates [i](#)

There are no oligosaccharides in this entry.

6.4 Ligands [i](#)

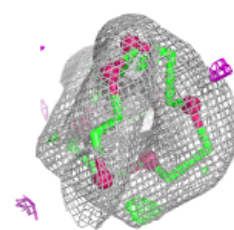
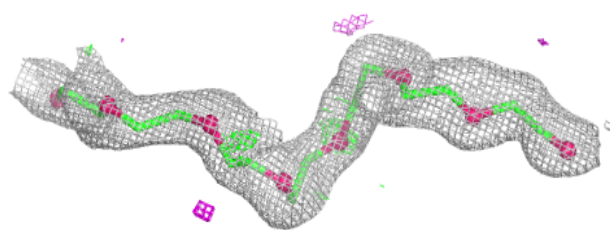
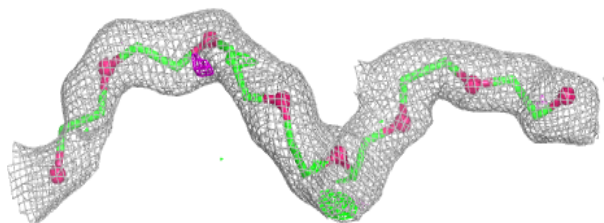
In the following table, the Atoms column lists the number of modelled atoms in the group and the number defined in the chemical component dictionary. The B-factors column lists the minimum, median, 95th percentile and maximum values of B factors of atoms in the group. The column labelled 'Q< 0.9' lists the number of atoms with occupancy less than 0.9.

Mol	Type	Chain	Res	Atoms	RSCC	RSR	B-factors(\AA^2)	Q<0.9
3	P33	A	502	22/22	0.92	0.12	26,33,45,48	0
2	EL5	B	501	43/43	0.97	0.06	11,14,20,30	0
2	EL5	A	501	43/43	0.97	0.06	12,16,21,32	0

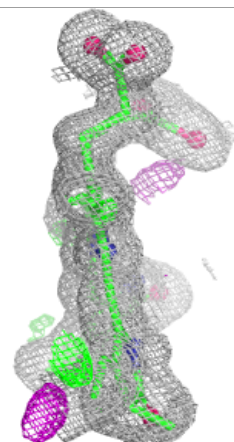
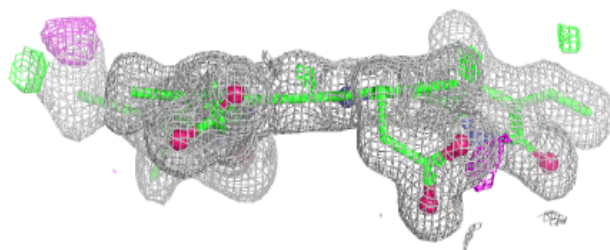
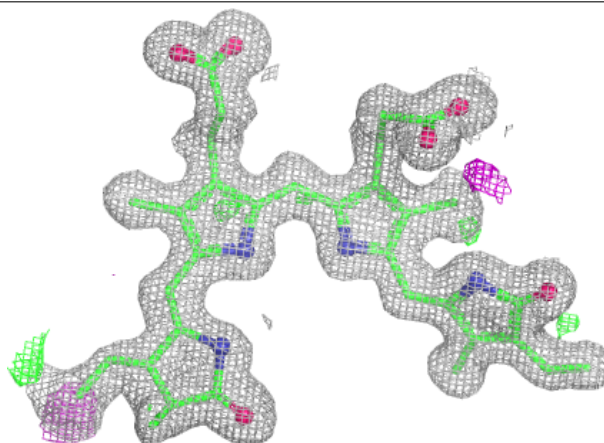
The following is a graphical depiction of the model fit to experimental electron density of all instances of the Ligand of Interest. In addition, ligands with molecular weight > 250 and outliers as shown on the geometry validation Tables will also be included. Each fit is shown from different orientation to approximate a three-dimensional view.

Electron density around P33 A 502:

$2mF_o-DF_c$ (at 0.7 rmsd) in gray
 mF_o-DF_c (at 3 rmsd) in purple (negative)
and green (positive)

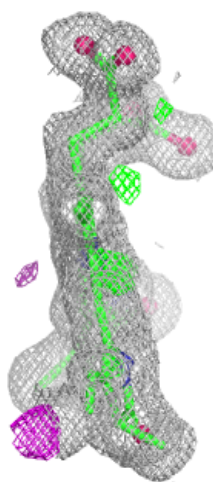
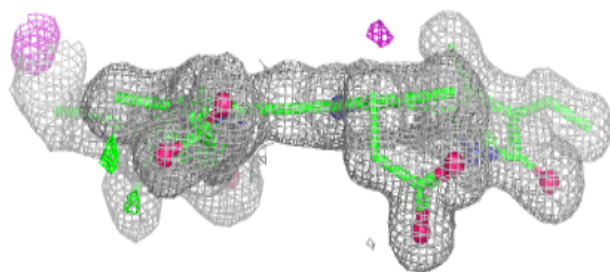
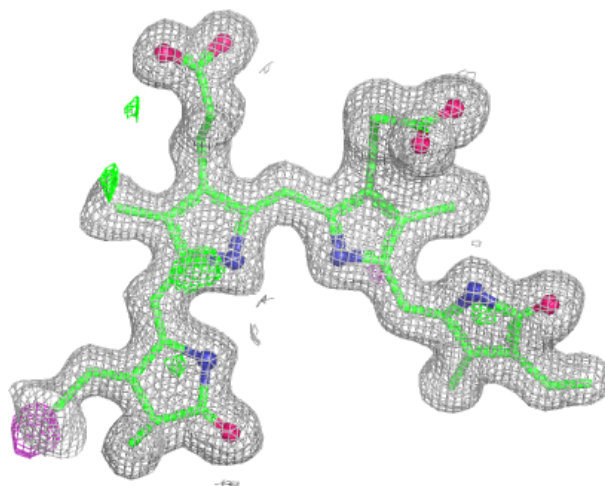
**Electron density around EL5 B 501:**

$2mF_o-DF_c$ (at 0.7 rmsd) in gray
 mF_o-DF_c (at 3 rmsd) in purple (negative)
and green (positive)



Electron density around EL5 A 501:

$2mF_o-DF_c$ (at 0.7 rmsd) in gray
 mF_o-DF_c (at 3 rmsd) in purple (negative)
and green (positive)



6.5 Other polymers [i](#)

There are no such residues in this entry.