



# wwPDB EM Validation Summary Report ⓘ

Mar 9, 2026 – 10:03 AM UTC

PDB ID : 9DW1 / pdb\_00009dw1  
EMDB ID : EMD-47233  
Title : Human mitochondrial ClpP protease  
Authors : Chen, W.C.  
Deposited on : 2024-10-08  
Resolution : 3.40 Å(reported)  
Based on initial model : 9DW1

This is a wwPDB EM Validation Summary Report for a publicly released PDB entry.

We welcome your comments at [validation@mail.wwpdb.org](mailto:validation@mail.wwpdb.org)

A user guide is available at

<https://www.wwpdb.org/validation/2017/EMValidationReportHelp>  
with specific help available everywhere you see the ⓘ symbol.

The types of validation reports are described at

<http://www.wwpdb.org/validation/2017/FAQs#types>.

---

The following versions of software and data (see [references ⓘ](#)) were used in the production of this report:

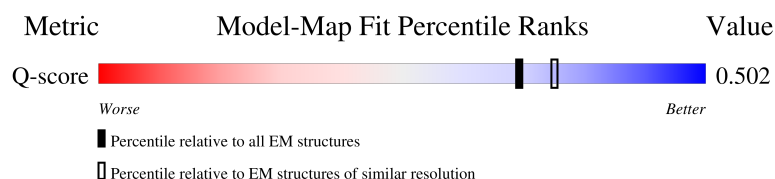
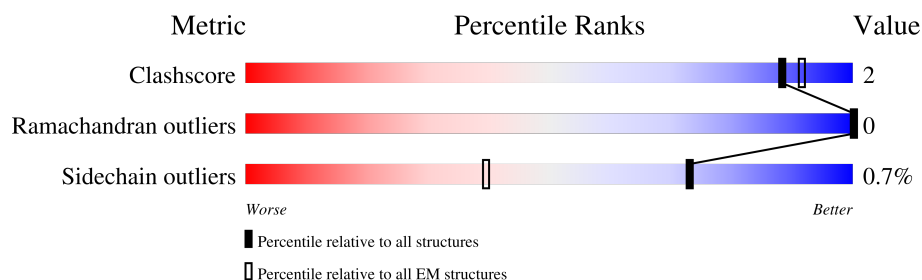
EMDB validation analysis : 0.0.1.dev132  
MolProbity : 4-5-2 with Phenix2.0  
Percentile statistics : 20250101.v01 (using entries in the PDB archive January 1st 2025)  
EM percentile statistics : 202505.v01 (Using data in the EMDB archive up until May 2025)  
MapQ : 1.9.13  
Ideal geometry (proteins) : Engh & Huber (2001)  
Ideal geometry (DNA, RNA) : Parkinson et al. (1996)  
Validation Pipeline (wwPDB-VP) : 2.49

# 1 Overall quality at a glance

The following experimental techniques were used to determine the structure:  
*ELECTRON MICROSCOPY*

The reported resolution of this entry is 3.40 Å.

Percentile scores (ranging between 0-100) for global validation metrics of the entry are shown in the following graphic. The table shows the number of entries on which the scores are based.






Metric	Whole archive (#Entries)	EM structures (#Entries)	Similar EM resolution (#Entries, resolution range(Å))
Clashscore	229148	23984	-
Ramachandran outliers	224038	23583	-
Sidechain outliers	223484	23102	-
Q-score	-	25397	14717 ( 2.90 - 3.90 )

The table below summarises the geometric issues observed across the polymeric chains and their fit to the map. The red, orange, yellow and green segments of the bar indicate the fraction of residues that contain outliers for  $\geq 3$ , 2, 1 and 0 types of geometric quality criteria respectively. A grey segment represents the fraction of residues that are not modelled. The numeric value for each fraction is indicated below the corresponding segment, with a dot representing fractions  $\leq 5\%$ . The upper red bar (where present) indicates the fraction of residues that have poor fit to the EM map (all-atom inclusion  $< 40\%$ ). The numeric value is given above the bar.

Mol	Chain	Length	Quality of chain
1	H	220	 69% 5% 26%
1	I	220	 74% 22%
1	J	220	 75% 5% 20%
1	K	220	 70% 26%

Continued on next page...

*Continued from previous page...*

Mol	Chain	Length	Quality of chain
1	L	220	 69%27%
1	M	220	 69%27%
1	N	220	 73%6%21%

## 2 Entry composition

There is only 1 type of molecule in this entry. The entry contains 9090 atoms, of which 0 are hydrogens and 0 are deuteriums.

In the tables below, the AltConf column contains the number of residues with at least one atom in alternate conformation and the Trace column contains the number of residues modelled with at most 2 atoms.

- Molecule 1 is a protein called ATP-dependent Clp protease proteolytic subunit, mitochondrial.

Mol	Chain	Residues	Atoms					AltConf	Trace
1	H	162	Total	C	N	O	S	0	0
			1268	809	216	230	13		
1	I	172	Total	C	N	O	S	0	0
			1341	858	227	243	13		
1	J	175	Total	C	N	O	S	0	0
			1361	869	230	249	13		
1	K	162	Total	C	N	O	S	0	0
			1270	808	219	230	13		
1	L	160	Total	C	N	O	S	0	0
			1249	795	214	227	13		
1	M	160	Total	C	N	O	S	0	0
			1249	795	214	227	13		
1	N	173	Total	C	N	O	S	0	0
			1352	862	231	246	13		

### 3 Residue-property plots [i](#)

These plots are drawn for all protein, RNA, DNA and oligosaccharide chains in the entry. The first graphic for a chain summarises the proportions of the various outlier classes displayed in the second graphic. The second graphic shows the sequence view annotated by issues in geometry and atom inclusion in map density. Residues are color-coded according to the number of geometric quality criteria for which they contain at least one outlier: green = 0, yellow = 1, orange = 2 and red = 3 or more. A red diamond above a residue indicates a poor fit to the EM map for this residue (all-atom inclusion < 40%). Stretches of 2 or more consecutive residues without any outlier are shown as a green connector. Residues present in the sample, but not in the model, are shown in grey.

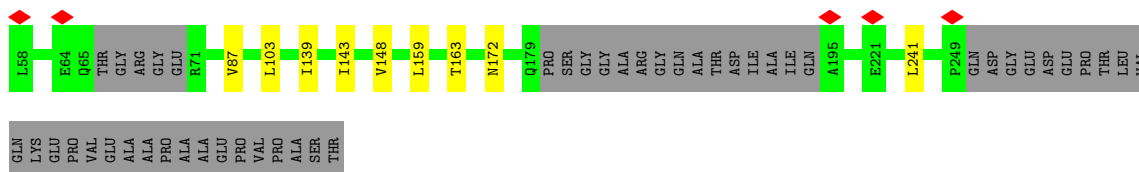
- Molecule 1: ATP-dependent Clp protease proteolytic subunit, mitochondrial

Chain H: 



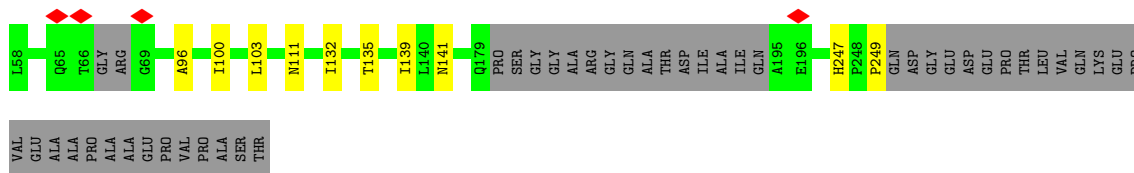
- Molecule 1: ATP-dependent Clp protease proteolytic subunit, mitochondrial

Chain I: 



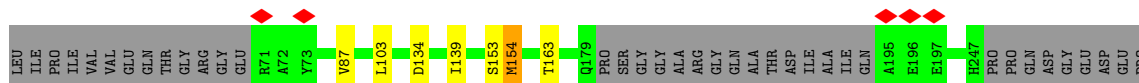
- Molecule 1: ATP-dependent Clp protease proteolytic subunit, mitochondrial

Chain J: 



- Molecule 1: ATP-dependent Clp protease proteolytic subunit, mitochondrial

Chain K: 



THR  
LEU  
VAL  
GLN  
LYS  
GLU  
PRO  
VAL  
GLU  
ALA  
ALA  
PRO  
ALA  
ALA  
GLU  
PRO  
VAL  
PRO  
ALA  
SER  
THR

● Molecule 1: ATP-dependent Clp protease proteolytic subunit, mitochondrial



LEU  
ILE  
PRO  
ILE  
VAL  
VAL  
GLU  
GLN  
THR  
GLY  
ARG  
GLY  
VAL  
ARG  
ALA  
TYR  
D74  
L103  
M117  
V126  
M136  
I139  
L159  
N172  
Q179  
PRO  
SER  
GLY  
GLY  
ALA  
ARG  
GLY  
GLN  
ALA  
THR  
ASP  
ILE  
ALA  
ILE  
ILE  
GLN  
A195  
E196  
E197  
L201  
L241  
P248  
PRO  
GLN  
ASP

GLY  
GLU  
ASP  
GLU  
PRO  
THR  
LEU  
VAL  
GLN  
LYS  
GLY  
PRO  
VAL  
GLU  
ALA  
ALA  
PRO  
ALA  
GLU  
PRO  
VAL  
SER  
THR

● Molecule 1: ATP-dependent Clp protease proteolytic subunit, mitochondrial



LEU  
ILE  
PRO  
ILE  
VAL  
VAL  
GLU  
GLN  
THR  
GLY  
ARG  
GLY  
VAL  
ARG  
ALA  
TYR  
D74  
L80  
I91  
A96  
S97  
I100  
M111  
G124  
I132  
Y138  
Q179  
PRO  
SER  
GLY  
GLY  
ALA  
ARG  
GLY  
GLN  
ALA  
THR  
ASP  
ILE  
ALA  
ILE  
GLN  
A195  
E196  
E197  
I198  
M199  
K200  
P248  
PRO

GLN  
ASP  
GLY  
GLU  
ASP  
GLU  
PRO  
THR  
LEU  
VAL  
GLN  
LYS  
GLU  
PRO  
VAL  
GLU  
ALA  
ALA  
PRO  
ALA  
ALA  
GLU  
VAL  
PRO  
ALA  
SER  
THR

● Molecule 1: ATP-dependent Clp protease proteolytic subunit, mitochondrial



LEU  
I59  
E64  
G65  
THR  
ARG  
G69  
R78  
V87  
I91  
M111  
G124  
D134  
M141  
I145  
V146  
C147  
L159  
M172  
Q179  
PRO  
SER  
GLY  
GLY  
ALA  
ARG  
GLY  
GLN  
ALA  
THR  
ASP  
ILE  
ALA  
ILE  
ILE  
GLN  
A195  
E221  
E225  
L241  
P249  
GLN  
ASP  
GLY

GLU  
ASP  
GLU  
PRO  
THR  
LEU  
VAL  
GLN  
LYS  
GLU  
PRO  
VAL  
GLU  
ALA  
ALA  
PRO  
ALA  
ALA  
GLU  
PRO  
VAL  
PRO  
ALA  
SER  
THR

## 4 Experimental information

Property	Value	Source
EM reconstruction method	SINGLE PARTICLE	Depositor
Imposed symmetry	POINT, Not provided	
Number of particles used	372966	Depositor
Resolution determination method	FSC 0.143 CUT-OFF	Depositor
CTF correction method	PHASE FLIPPING AND AMPLITUDE CORRECTION	Depositor
Microscope	FEI TALOS ARCTICA	Depositor
Voltage (kV)	200	Depositor
Electron dose ( $e^-/\text{\AA}^2$ )	50	Depositor
Minimum defocus (nm)	300	Depositor
Maximum defocus (nm)	3500	Depositor
Magnification	53191	Depositor
Image detector	GATAN K2 SUMMIT (4k x 4k)	Depositor
Maximum map value	1.759	Depositor
Minimum map value	-1.073	Depositor
Average map value	-0.000	Depositor
Map value standard deviation	0.032	Depositor
Recommended contour level	0.2	Depositor
Map size (Å)	282.0, 282.0, 282.0	wwPDB
Map dimensions	300, 300, 300	wwPDB
Map angles (°)	90.0, 90.0, 90.0	wwPDB
Pixel spacing (Å)	0.94, 0.94, 0.94	Depositor

## 5 Model quality [i](#)

### 5.1 Standard geometry [i](#)

The Z score for a bond length (or angle) is the number of standard deviations the observed value is removed from the expected value. A bond length (or angle) with  $|Z| > 5$  is considered an outlier worth inspection. RMSZ is the root-mean-square of all Z scores of the bond lengths (or angles).

Mol	Chain	Bond lengths		Bond angles	
		RMSZ	# Z  >5	RMSZ	# Z  >5
1	H	0.13	0/1292	0.39	0/1746
1	I	0.15	0/1365	0.38	0/1846
1	J	0.14	0/1385	0.38	0/1873
1	K	0.13	0/1292	0.38	0/1743
1	L	0.14	0/1271	0.37	0/1716
1	M	0.14	0/1271	0.41	0/1716
1	N	0.15	0/1376	0.38	0/1859
All	All	0.14	0/9252	0.38	0/12499

There are no bond length outliers.

There are no bond angle outliers.

There are no chirality outliers.

There are no planarity outliers.

### 5.2 Too-close contacts [i](#)

In the following table, the Non-H and H(model) columns list the number of non-hydrogen atoms and hydrogen atoms in the chain respectively. The H(added) column lists the number of hydrogen atoms added and optimized by MolProbity. The Clashes column lists the number of clashes within the asymmetric unit, whereas Symm-Clashes lists symmetry-related clashes.

Mol	Chain	Non-H	H(model)	H(added)	Clashes	Symm-Clashes
1	H	1268	0	1299	6	0
1	I	1341	0	1377	6	0
1	J	1361	0	1393	5	0
1	K	1270	0	1303	4	0
1	L	1249	0	1283	5	0
1	M	1249	0	1283	5	0
1	N	1352	0	1386	9	0
All	All	9090	0	9324	35	0



The all-atom clashscore is defined as the number of clashes found per 1000 atoms (including hydrogen atoms). The all-atom clashscore for this structure is 2.

The worst 5 of 35 close contacts within the same asymmetric unit are listed below, sorted by their clash magnitude.

Atom-1	Atom-2	Interatomic distance (Å)	Clash overlap (Å)
1:N:159:LEU:HD21	1:N:241:LEU:HD21	1.85	0.59
1:I:159:LEU:HD21	1:I:241:LEU:HD21	1.86	0.57
1:N:64:GLU:OE2	1:N:78:ARG:NH1	2.39	0.56
1:H:159:LEU:HD21	1:H:241:LEU:HD21	1.90	0.54
1:K:153:SER:OG	1:K:154:MET:N	2.39	0.54

There are no symmetry-related clashes.

## 5.3 Torsion angles [i](#)

### 5.3.1 Protein backbone [i](#)

In the following table, the Percentiles column shows the percent Ramachandran outliers of the chain as a percentile score with respect to all PDB entries followed by that with respect to all EM entries.

The Analysed column shows the number of residues for which the backbone conformation was analysed, and the total number of residues.

Mol	Chain	Analysed	Favoured	Allowed	Outliers	Percentiles	
1	H	158/220 (72%)	155 (98%)	3 (2%)	0	100	100
1	I	166/220 (76%)	163 (98%)	3 (2%)	0	100	100
1	J	169/220 (77%)	166 (98%)	3 (2%)	0	100	100
1	K	158/220 (72%)	154 (98%)	4 (2%)	0	100	100
1	L	156/220 (71%)	151 (97%)	5 (3%)	0	100	100
1	M	156/220 (71%)	154 (99%)	2 (1%)	0	100	100
1	N	167/220 (76%)	165 (99%)	2 (1%)	0	100	100
All	All	1130/1540 (73%)	1108 (98%)	22 (2%)	0	100	100

There are no Ramachandran outliers to report.

### 5.3.2 Protein sidechains ⓘ

In the following table, the Percentiles column shows the percent sidechain outliers of the chain as a percentile score with respect to all PDB entries followed by that with respect to all EM entries.

The Analysed column shows the number of residues for which the sidechain conformation was analysed, and the total number of residues.

Mol	Chain	Analysed	Rotameric	Outliers	Percentiles	
1	H	141/184 (77%)	139 (99%)	2 (1%)	59	70
1	I	149/184 (81%)	149 (100%)	0	100	100
1	J	151/184 (82%)	151 (100%)	0	100	100
1	K	140/184 (76%)	138 (99%)	2 (1%)	59	70
1	L	139/184 (76%)	139 (100%)	0	100	100
1	M	139/184 (76%)	136 (98%)	3 (2%)	45	63
1	N	150/184 (82%)	150 (100%)	0	100	100
All	All	1009/1288 (78%)	1002 (99%)	7 (1%)	73	78

5 of 7 residues with a non-rotameric sidechain are listed below:

Mol	Chain	Res	Type
1	K	163	THR
1	M	80	LEU
1	M	111	ASN
1	M	100	ILE
1	K	154	MET

Sometimes sidechains can be flipped to improve hydrogen bonding and reduce clashes. 5 of 12 such sidechains are listed below:

Mol	Chain	Res	Type
1	L	141	ASN
1	M	141	ASN
1	N	141	ASN
1	M	150	GLN
1	J	141	ASN

### 5.3.3 RNA ⓘ

There are no RNA molecules in this entry.

## 5.4 Non-standard residues in protein, DNA, RNA chains [i](#)

There are no non-standard protein/DNA/RNA residues in this entry.

## 5.5 Carbohydrates [i](#)

There are no oligosaccharides in this entry.

## 5.6 Ligand geometry [i](#)

There are no ligands in this entry.

## 5.7 Other polymers [i](#)

There are no such residues in this entry.

## 5.8 Polymer linkage issues [i](#)

There are no chain breaks in this entry.

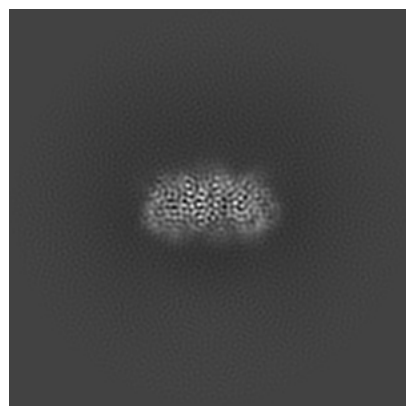
## 6 Map visualisation [i](#)

This section contains visualisations of the EMDB entry EMD-47233. These allow visual inspection of the internal detail of the map and identification of artifacts.

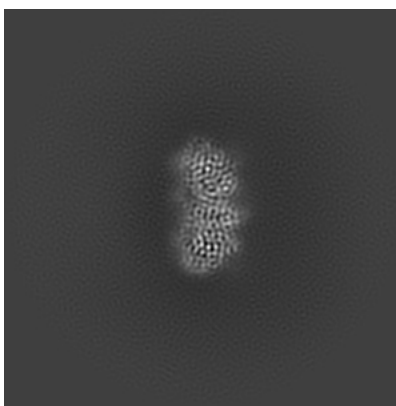
Images derived from a raw map, generated by summing the deposited half-maps, are presented below the corresponding image components of the primary map to allow further visual inspection and comparison with those of the primary map.

### 6.1 Orthogonal projections [i](#)

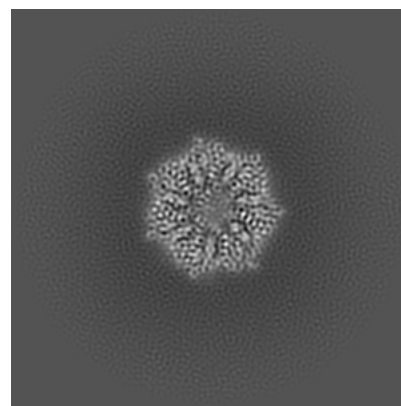
#### 6.1.1 Primary map



X

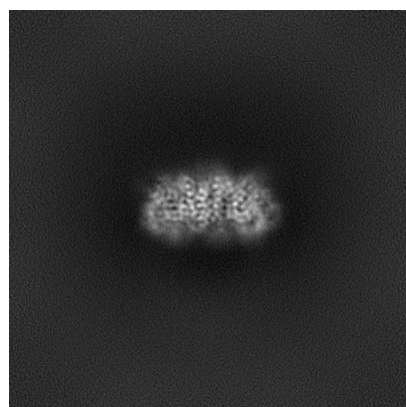


Y

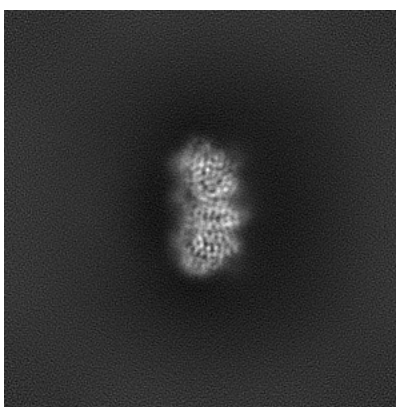


Z

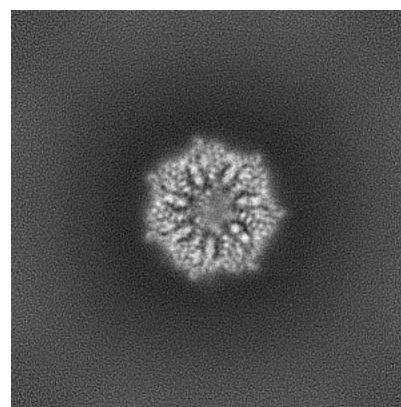
#### 6.1.2 Raw map



X



Y

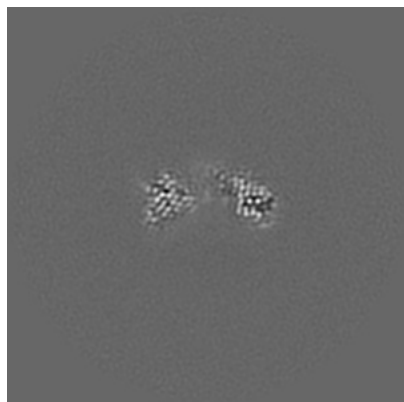


Z

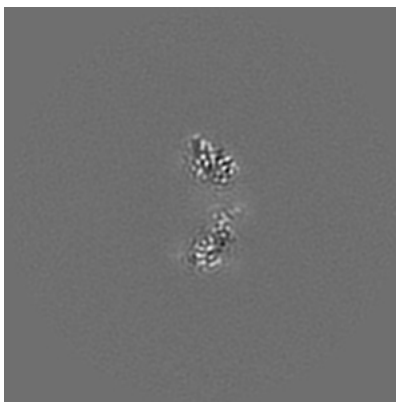
The images above show the map projected in three orthogonal directions.

## 6.2 Central slices [i](#)

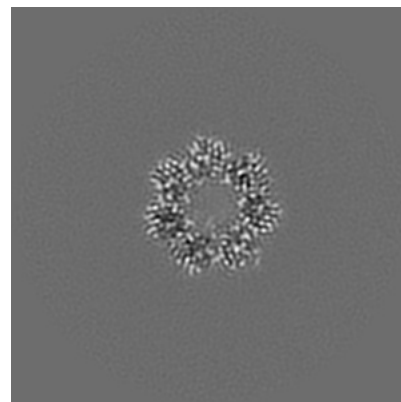
### 6.2.1 Primary map



X Index: 150

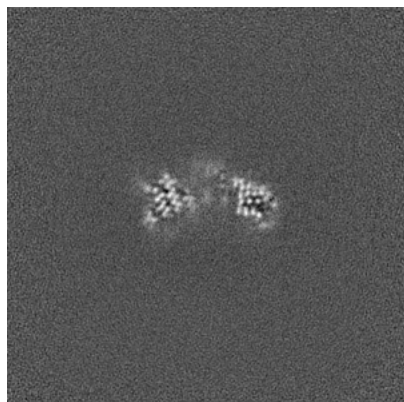


Y Index: 150

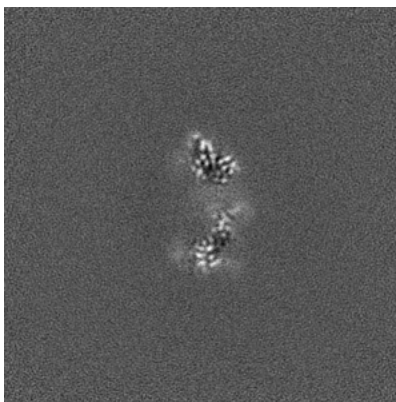


Z Index: 150

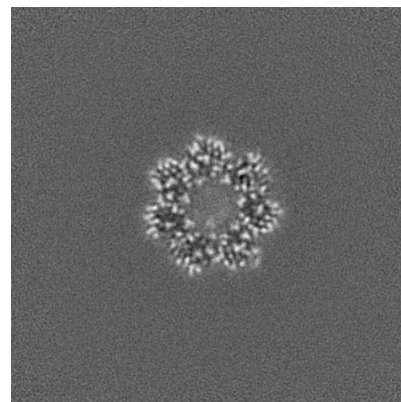
### 6.2.2 Raw map



X Index: 150



Y Index: 150

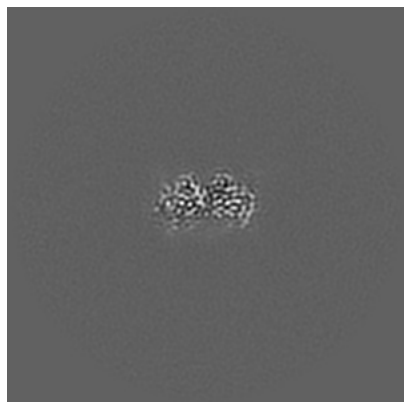


Z Index: 150

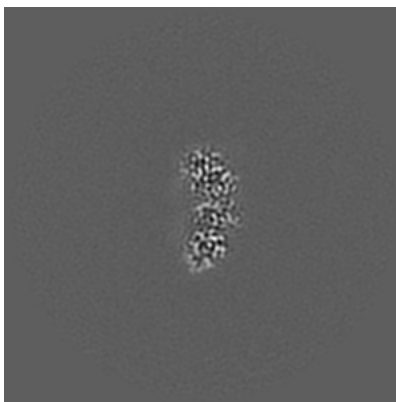
The images above show central slices of the map in three orthogonal directions.

## 6.3 Largest variance slices [i](#)

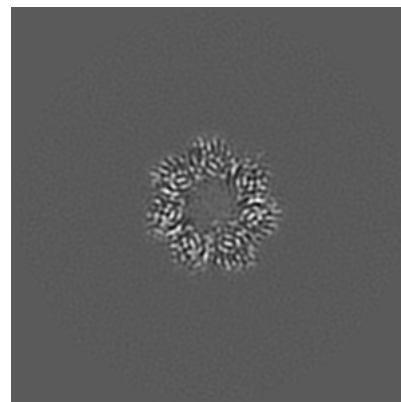
### 6.3.1 Primary map



X Index: 121

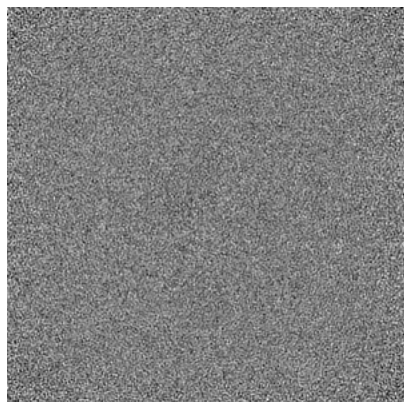


Y Index: 174

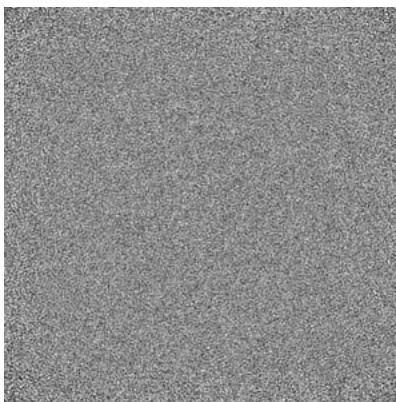


Z Index: 153

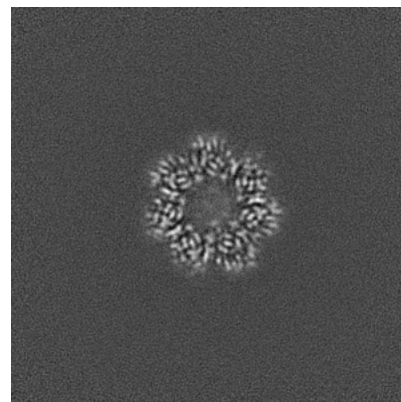
### 6.3.2 Raw map



X Index: 0



Y Index: 0



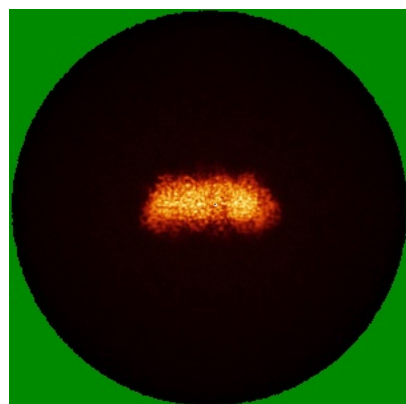
Z Index: 153

The images above show the largest variance slices of the map in three orthogonal directions.

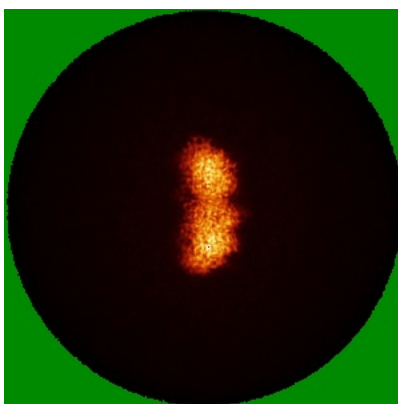


## 6.4 Orthogonal standard-deviation projections (False-color) [i](#)

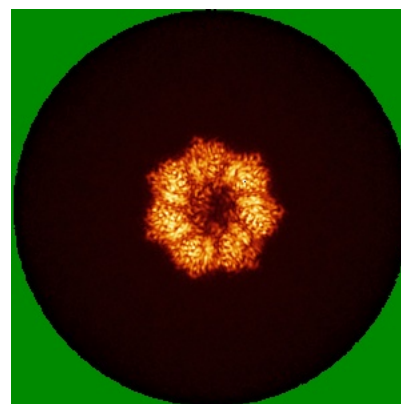
### 6.4.1 Primary map



X

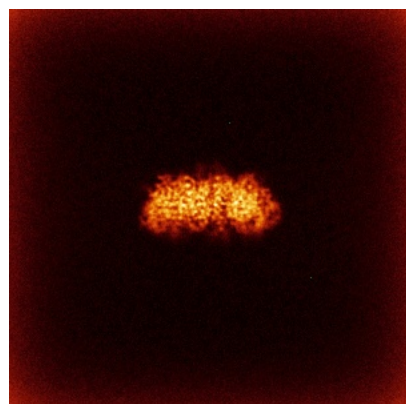


Y

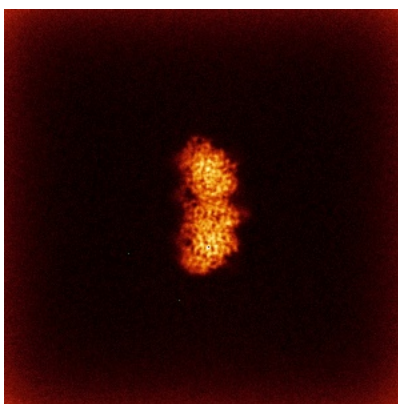


Z

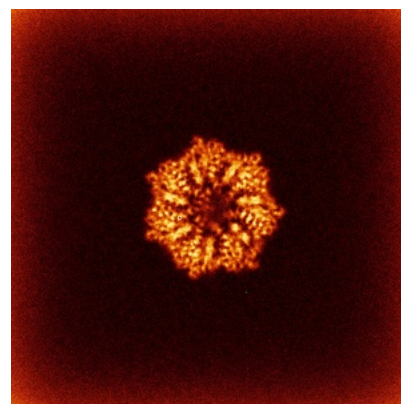
### 6.4.2 Raw map



X



Y

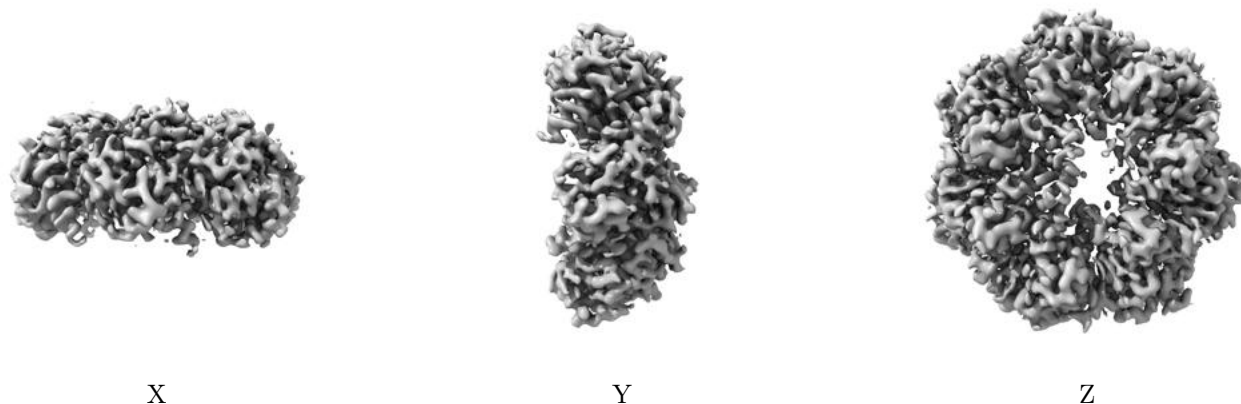


Z

The images above show the map standard deviation projections with false color in three orthogonal directions. Minimum values are shown in green, max in blue, and dark to light orange shades represent small to large values respectively.

## 6.5 Orthogonal surface views [i](#)

### 6.5.1 Primary map



The images above show the 3D surface view of the map at the recommended contour level 0.2. These images, in conjunction with the slice images, may facilitate assessment of whether an appropriate contour level has been provided.



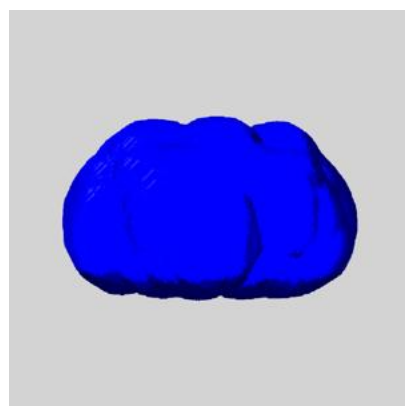
## 6.6 Mask visualisation [i](#)

This section shows the 3D surface view of the primary map at 50% transparency overlaid with the specified mask at 0% transparency

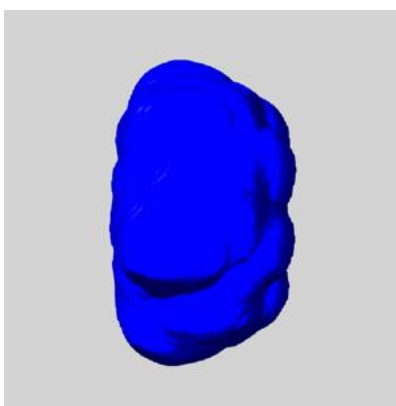
A mask typically either:

- Encompasses the whole structure
- Separates out a domain, a functional unit, a monomer or an area of interest from a larger structure

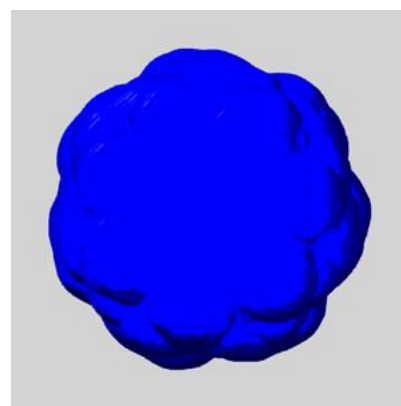
### 6.6.1 emd\_47233\_msk\_1.map [i](#)



X



Y

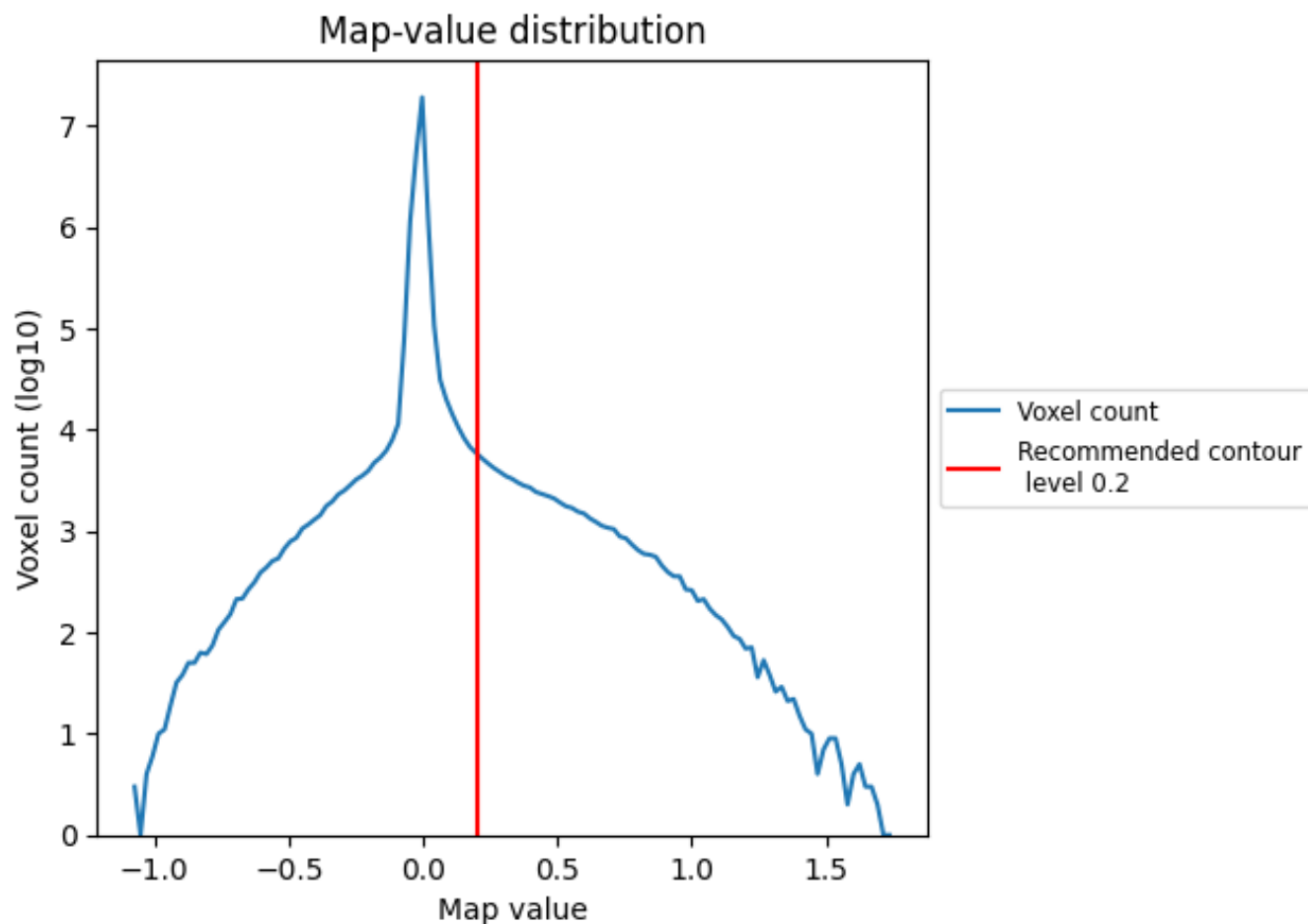


Z

## 7 Map analysis [i](#)

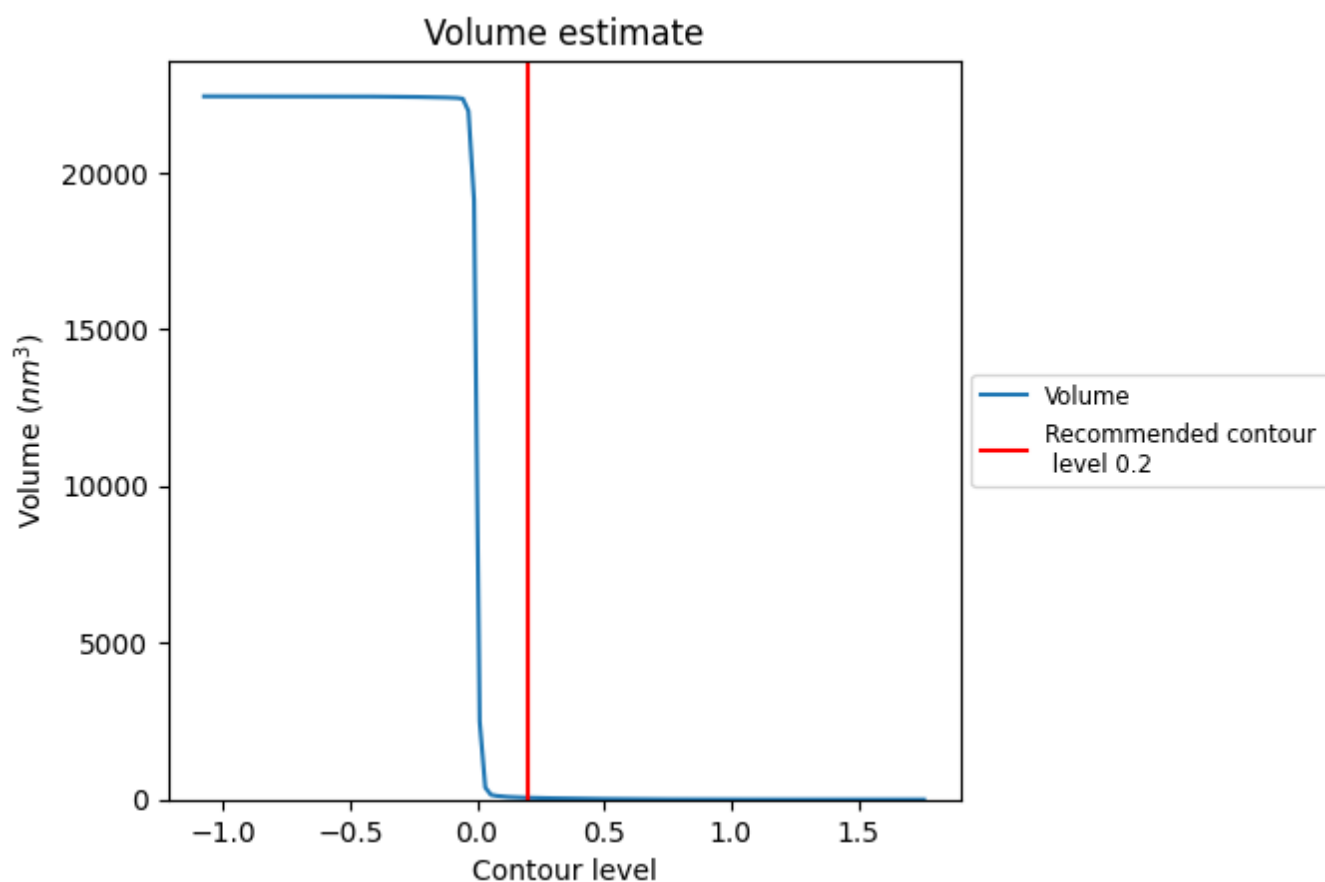
This section contains the results of statistical analysis of the map.

### 7.1 Map-value distribution [i](#)



The map-value distribution is plotted in 128 intervals along the x-axis. The y-axis is logarithmic. A spike in this graph at zero usually indicates that the volume has been masked.

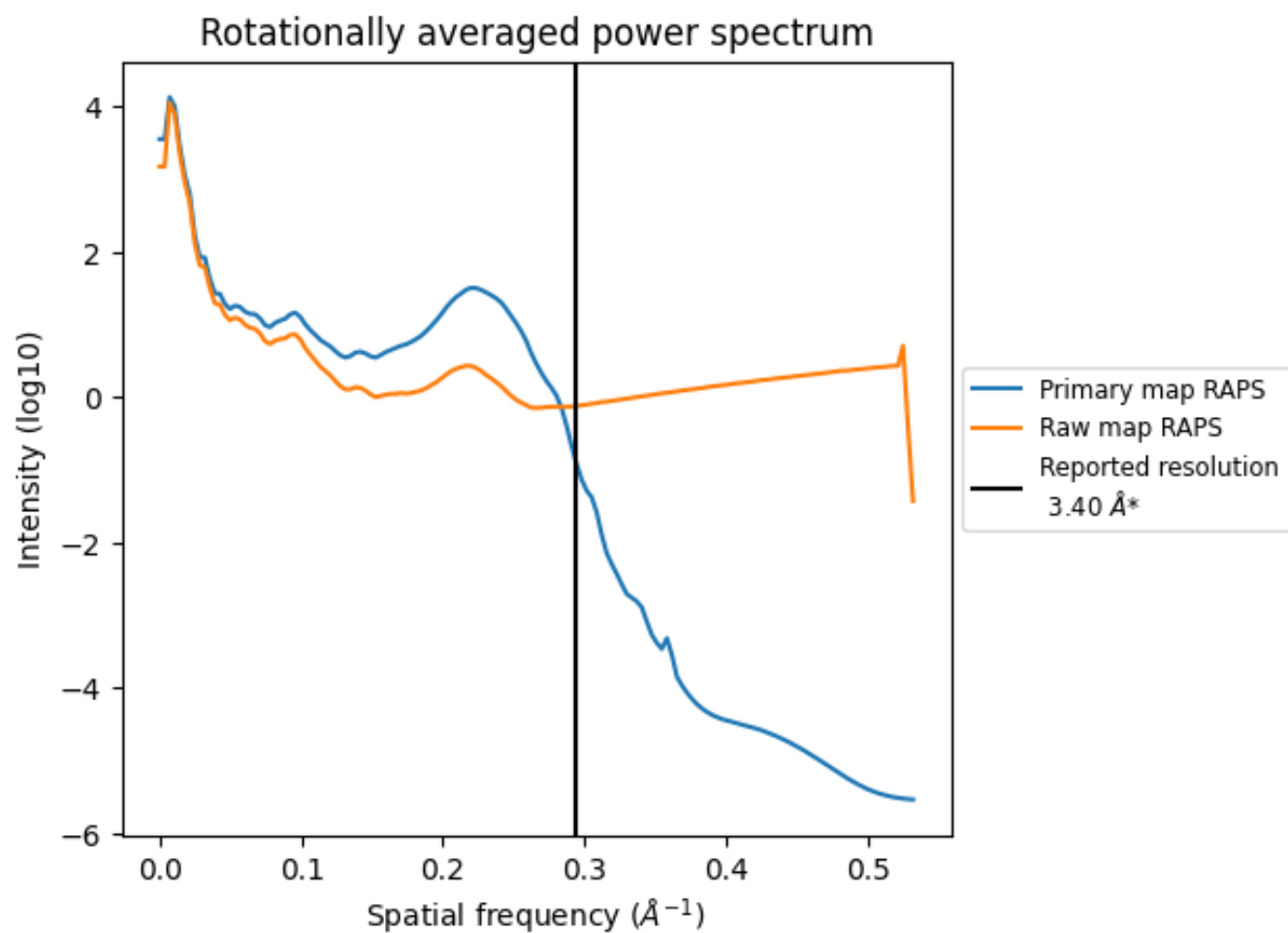
## 7.2 Volume estimate [i](#)



The volume at the recommended contour level is 58  $\text{nm}^3$ ; this corresponds to an approximate mass of 53 kDa.

The volume estimate graph shows how the enclosed volume varies with the contour level. The recommended contour level is shown as a vertical line and the intersection between the line and the curve gives the volume of the enclosed surface at the given level.

### 7.3 Rotationally averaged power spectrum ⓘ

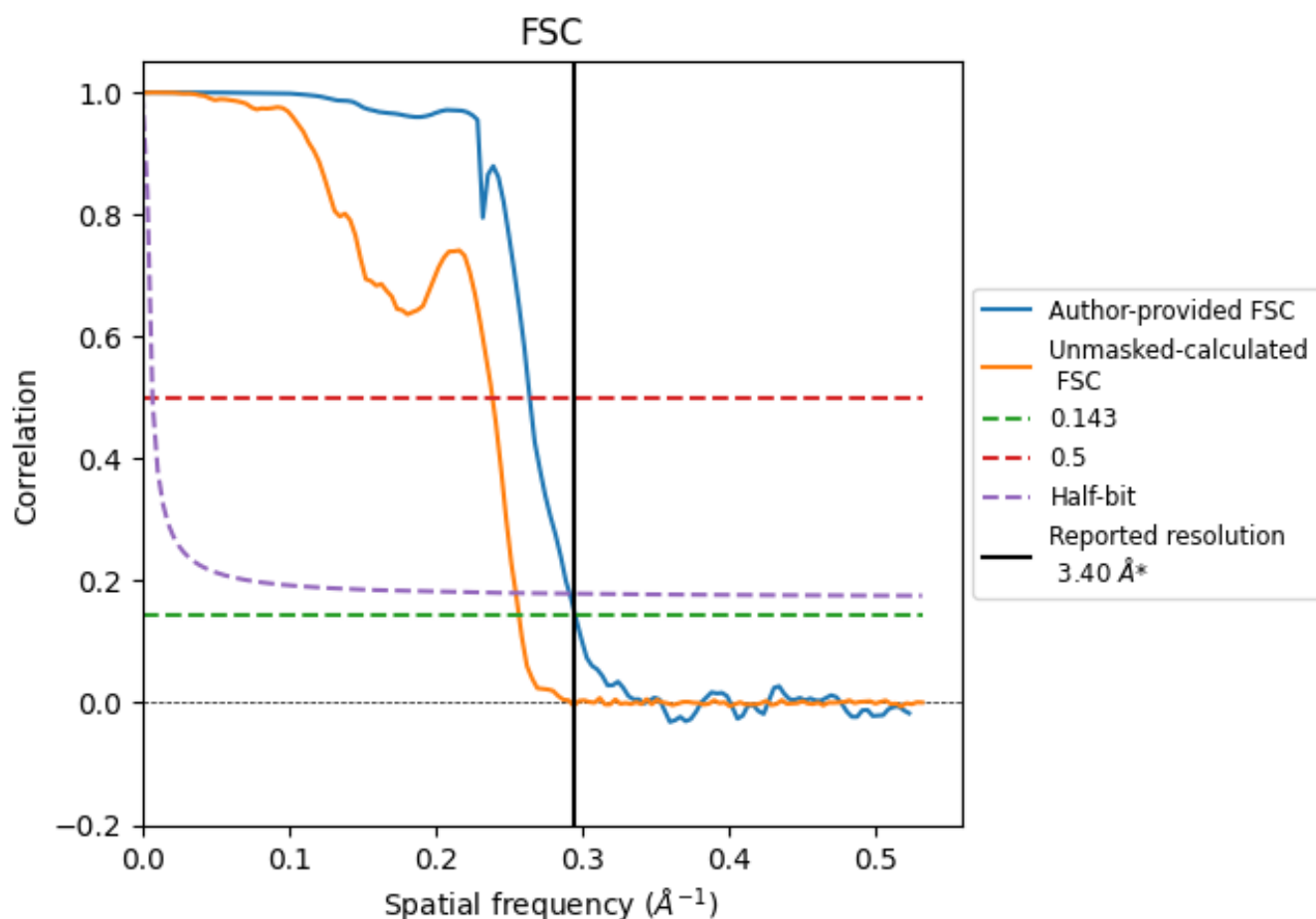


\*Reported resolution corresponds to spatial frequency of 0.294  $\text{\AA}^{-1}$

## 8 Fourier-Shell correlation [i](#)

Fourier-Shell Correlation (FSC) is the most commonly used method to estimate the resolution of single-particle and subtomogram-averaged maps. The shape of the curve depends on the imposed symmetry, mask and whether or not the two 3D reconstructions used were processed from a common reference. The reported resolution is shown as a black line. A curve is displayed for the half-bit criterion in addition to lines showing the 0.143 gold standard cut-off and 0.5 cut-off.

### 8.1 FSC [i](#)



\*Reported resolution corresponds to spatial frequency of 0.294  $\text{\AA}^{-1}$

## 8.2 Resolution estimates [i](#)

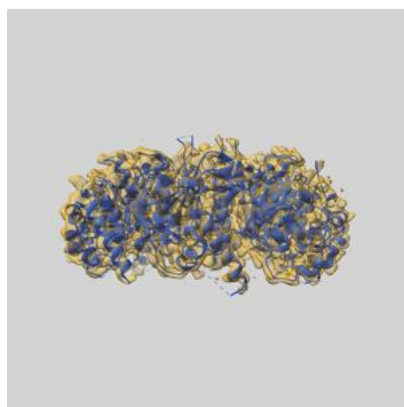
Resolution estimate (Å)	Estimation criterion (FSC cut-off)		
	0.143	0.5	Half-bit
Reported by author	3.40	-	-
Author-provided FSC curve	3.39	3.78	3.43
Unmasked-calculated*	3.89	4.19	3.92

\*Resolution estimate based on FSC curve calculated by comparison of deposited half-maps. The value from deposited half-maps intersecting FSC 0.143 CUT-OFF 3.89 differs from the reported value 3.4 by more than 10 %

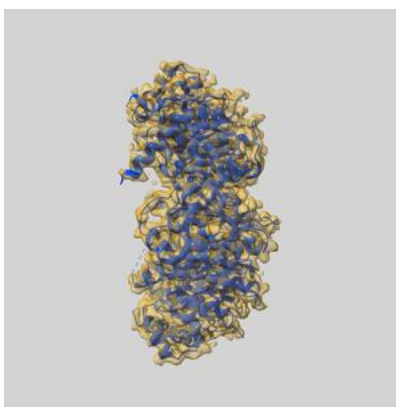
## 9 Map-model fit [i](#)

This section contains information regarding the fit between EMDB map EMD-47233 and PDB model 9DW1. Per-residue inclusion information can be found in [section 3](#) on [page 5](#).

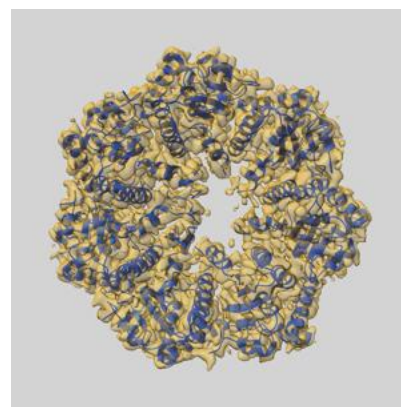
### 9.1 Map-model overlay [i](#)



X



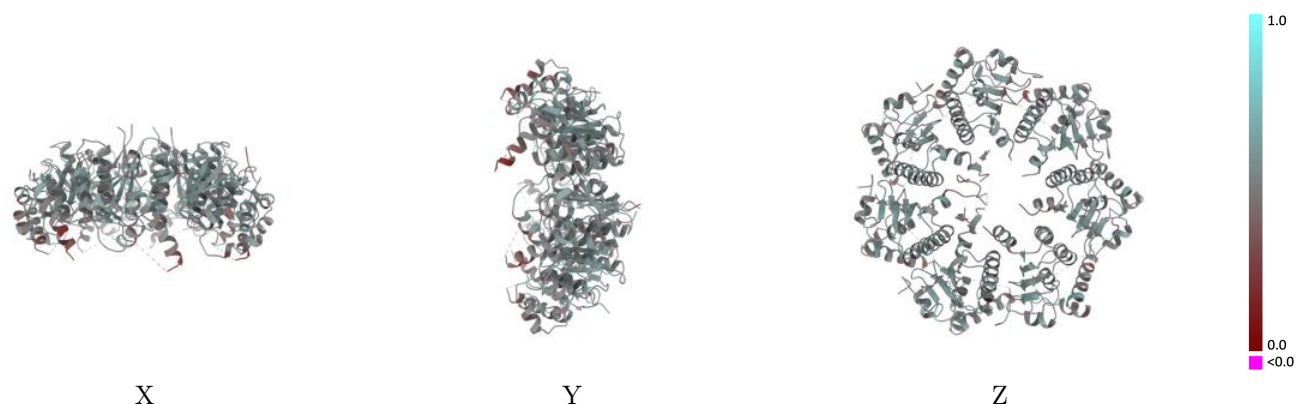
Y



Z

The images above show the 3D surface view of the map at the recommended contour level 0.2 at 50% transparency in yellow overlaid with a ribbon representation of the model coloured in blue. These images allow for the visual assessment of the quality of fit between the atomic model and the map.

## 9.2 Q-score mapped to coordinate model [i](#)



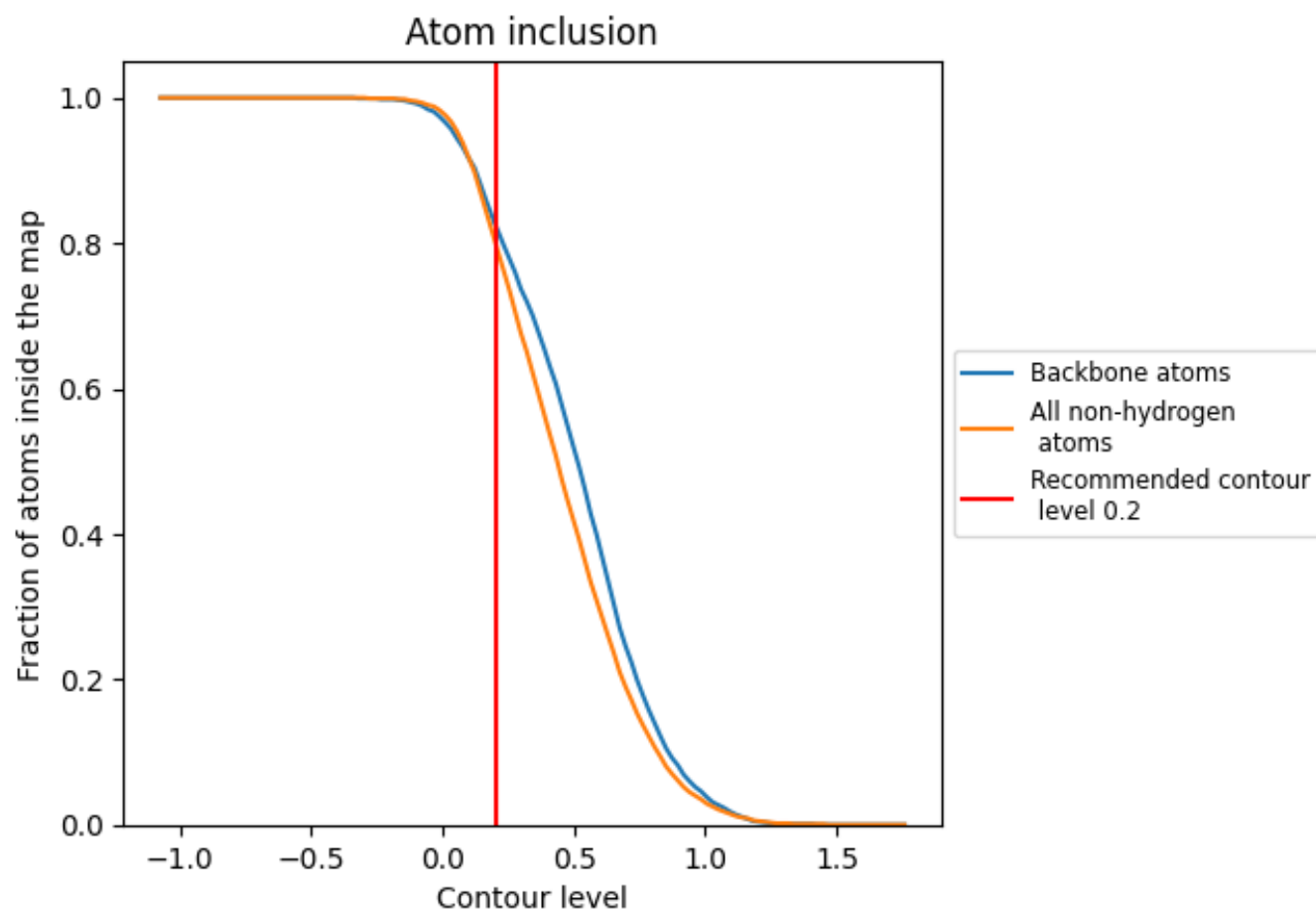
The images above show the model with each residue coloured according to its Q-score. This shows their resolvability in the map with higher Q-score values reflecting better resolvability. Please note: Q-score is calculating the resolvability of atoms, and thus high values are only expected at resolutions at which atoms can be resolved. Low Q-score values may therefore be expected for many entries.

## 9.3 Atom inclusion mapped to coordinate model [i](#)

This section was not generated.



## 9.4 Atom inclusion [i](#)



At the recommended contour level, 83% of all backbone atoms, 80% of all non-hydrogen atoms, are inside the map.

9.5 Map-model fit summary ⓘ

The table lists the average atom inclusion at the recommended contour level (0.2) and Q-score for the entire model and for each chain.

Chain	Atom inclusion	Q-score
All	<div><div></div></div> 0.8020	<div><div></div></div> 0.5020
H	<div><div></div></div> 0.7980	<div><div></div></div> 0.4970
I	<div><div></div></div> 0.7980	<div><div></div></div> 0.5010
J	<div><div></div></div> 0.7940	<div><div></div></div> 0.5060
K	<div><div></div></div> 0.7840	<div><div></div></div> 0.4960
L	<div><div></div></div> 0.8200	<div><div></div></div> 0.5040
M	<div><div></div></div> 0.8050	<div><div></div></div> 0.5000
N	<div><div></div></div> 0.8130	<div><div></div></div> 0.5070

1.0

0.0

<0.0