



# Full wwPDB X-ray Structure Validation Report ⓘ

Apr 9, 2026 – 09:19 PM UTC

PDB ID : 9DPG / pdb\_00009dpg  
Title : Structure of PmHMGR bound to mevalonate, CoA and NAD 2 minutes 20 seconds after reaction initiation at pH 9  
Authors : Purohit, V.; Steussy, C.N.; Schmidt, T.; Stauffacher, C.V.; Rushton, P.  
Deposited on : 2024-09-21  
Resolution : 2.50 Å(reported)

This is a Full wwPDB X-ray Structure Validation Report for a publicly released PDB entry.

We welcome your comments at [validation@mail.wwpdb.org](mailto:validation@mail.wwpdb.org)

A user guide is available at

<https://www.wwpdb.org/validation/2017/XrayValidationReportHelp>

with specific help available everywhere you see the ⓘ symbol.

The types of validation reports are described at

<http://www.wwpdb.org/validation/2017/FAQs#types>.

---

The following versions of software and data (see [references ⓘ](#)) were used in the production of this report:

MolProbity : 4-5-2 with Phenix2.0  
Mogul : 2022.3.0, CSD as543be (2022)  
Xtriage (Phenix) : 2.0  
EDS : 3.0  
Buster-report : wwPDB partial adaption of 1.1.7 (2018)  
Percentile statistics : 20250101.v01 (using entries in the PDB archive January 1st 2025)  
CCP4 : 9.0.010 (Gargrove)  
Density-Fitness : 1.0.12  
Ideal geometry (proteins) : Engh & Huber (2001)  
Ideal geometry (DNA, RNA) : Parkinson et al. (1996)  
Validation Pipeline (wwPDB-VP) : 2.49

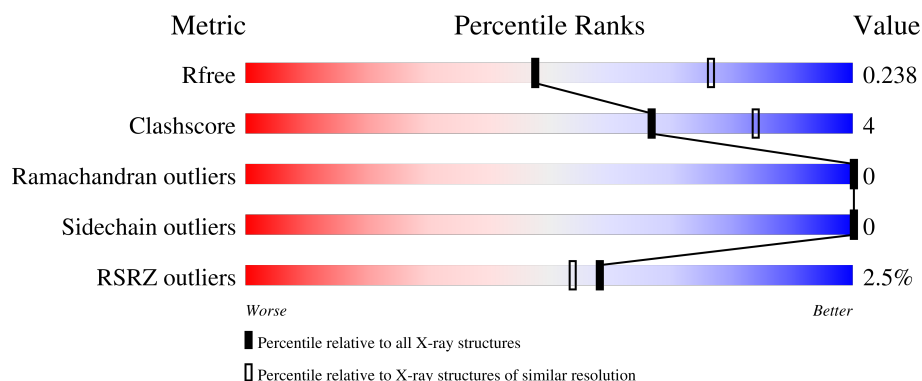
# 1 Overall quality at a glance

The following experimental techniques were used to determine the structure:

*X-RAY DIFFRACTION*

The reported resolution of this entry is 2.50 Å.

Percentile scores (ranging between 0-100) for global validation metrics of the entry are shown in the following graphic. The table shows the number of entries on which the scores are based.



Metric	Whole archive (#Entries)	Similar resolution (#Entries, resolution range(Å))
$R_{free}$	180053	5829 (2.50-2.50)
Clashscore	190562	6492 (2.50-2.50)
Ramachandran outliers	187476	6378 (2.50-2.50)
Sidechain outliers	187428	6380 (2.50-2.50)
RSRZ outliers	180081	5833 (2.50-2.50)

The table below summarises the geometric issues observed across the polymeric chains and their fit to the electron density. The red, orange, yellow and green segments of the lower bar indicate the fraction of residues that contain outliers for  $\geq 3$ , 2, 1 and 0 types of geometric quality criteria respectively. A grey segment represents the fraction of residues that are not modelled. The numeric value for each fraction is indicated below the corresponding segment, with a dot representing fractions  $\leq 5\%$ . The upper red bar (where present) indicates the fraction of residues that have poor fit to the electron density. The numeric value is given above the bar.

Mol	Chain	Length	Quality of chain
1	A	428	
1	B	428	

## 2 Entry composition [i](#)

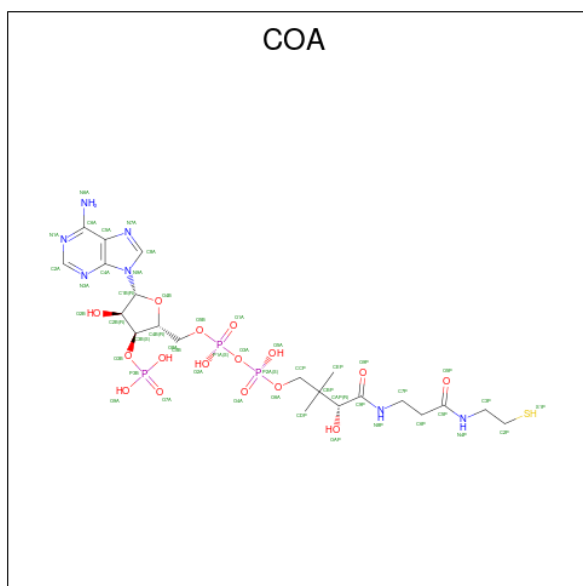
There are 8 unique types of molecules in this entry. The entry contains 6216 atoms, of which 0 are hydrogens and 0 are deuteriums.

In the tables below, the ZeroOcc column contains the number of atoms modelled with zero occupancy, the AltConf column contains the number of residues with at least one atom in alternate conformation and the Trace column contains the number of residues modelled with at most 2 atoms.

- Molecule 1 is a protein called 3-hydroxy-3-methylglutaryl-coenzyme A reductase.

Mol	Chain	Residues	Atoms					ZeroOcc	AltConf	Trace
1	A	419	Total	C	N	O	S	0	3	0
			3109	1945	569	579	16			
1	B	374	Total	C	N	O	S	0	4	0
			2798	1751	503	529	15			

- Molecule 2 is COENZYME A (CCD ID: COA) (formula:  $C_{21}H_{36}N_7O_{16}P_3S$ ) (labeled as "Ligand of Interest" by depositor).



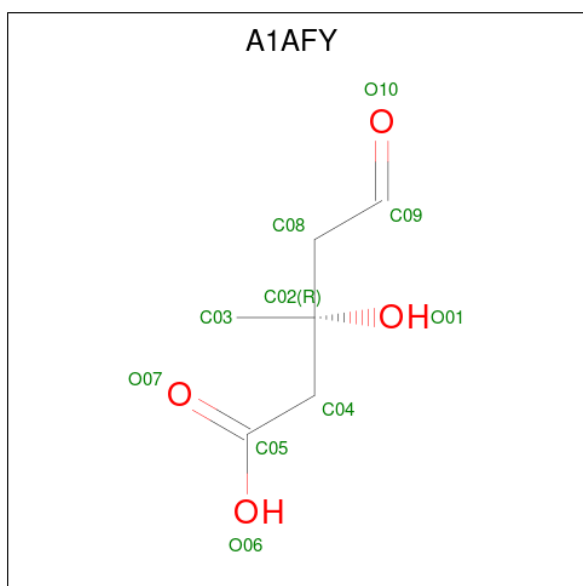
Mol	Chain	Residues	Atoms					ZeroOcc	AltConf
2	A	1	Total	C	N	O	P S	0	1
			48	21	7	16	3 1		

- Molecule 3 is SULFATE ION (CCD ID: SO4) (formula:  $O_4S$ ) (labeled as "Ligand of Interest" by depositor).



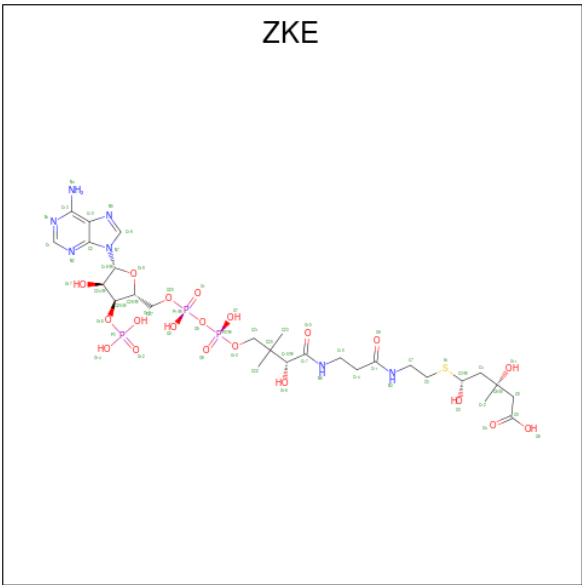
Mol	Chain	Residues	Atoms			ZeroOcc	AltConf
3	A	1	Total	O	S	0	0
			5	4	1		

- Molecule 4 is (R)-mevaldehyde (CCD ID: A1AFY) (formula: C<sub>6</sub>H<sub>10</sub>O<sub>4</sub>) (labeled as "Ligand of Interest" by depositor).



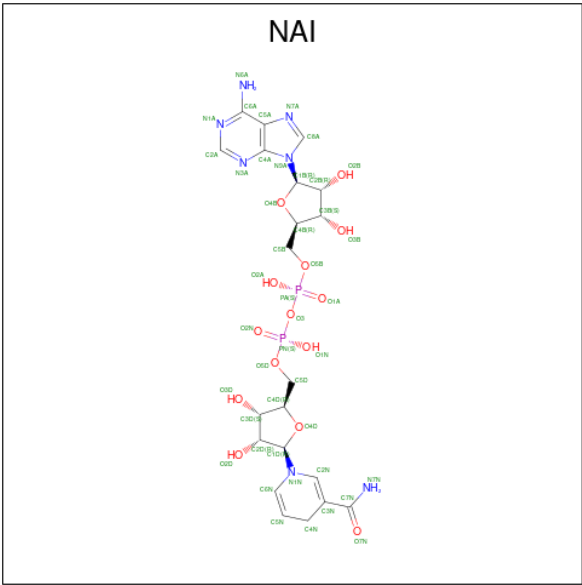
Mol	Chain	Residues	Atoms			ZeroOcc	AltConf
4	A	1	Total	C	O	0	1
			10	6	4		

- Molecule 5 is Mevaldyl-Coenzyme A (CCD ID: ZKE) (formula: C<sub>27</sub>H<sub>46</sub>N<sub>7</sub>O<sub>20</sub>P<sub>3</sub>S) (labeled as "Ligand of Interest" by depositor).



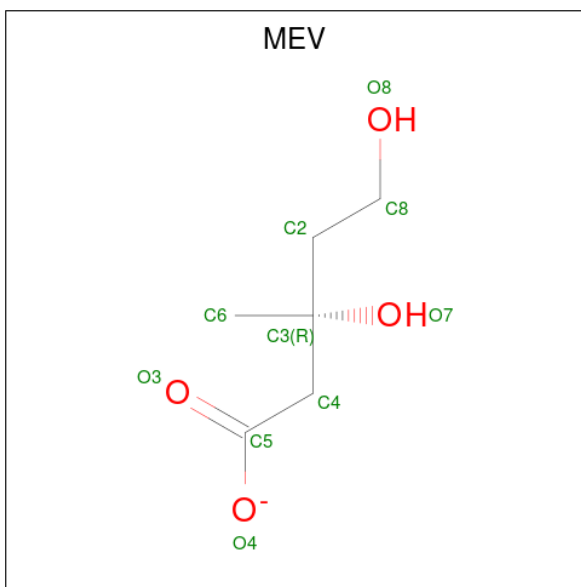
Mol	Chain	Residues	Atoms					ZeroOcc	AltConf
			Total	C	N	O	P		
5	A	1	58	27	7	20	3	0	1

- Molecule 6 is 1,4-DIHYDRONICOTINAMIDE ADENINE DINUCLEOTIDE (CCD ID: NAI) (formula:  $C_{21}H_{29}N_7O_{14}P_2$ ) (labeled as "Ligand of Interest" by depositor).



Mol	Chain	Residues	Atoms					ZeroOcc	AltConf
			Total	C	N	O	P		
6	B	1	44	21	7	14	2	0	1

- Molecule 7 is (R)-MEVALONATE (CCD ID: MEV) (formula:  $C_6H_{11}O_4$ ) (labeled as "Ligand of Interest" by depositor).



Mol	Chain	Residues	Atoms			ZeroOcc	AltConf
7	B	1	Total	C	O	0	0
			10	6	4		

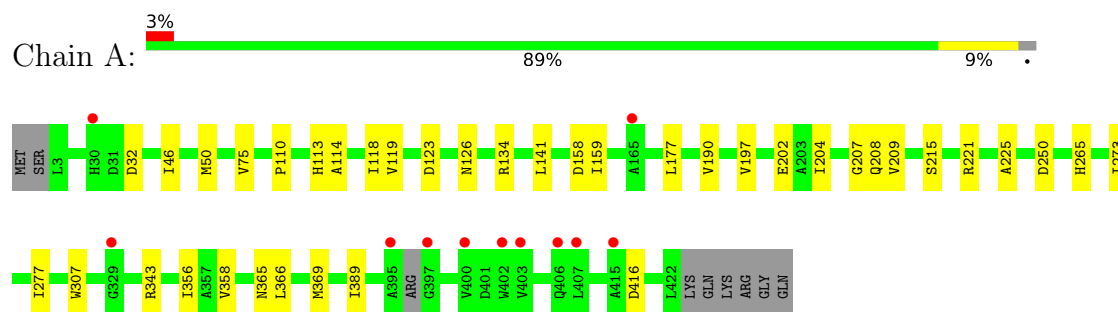
- Molecule 8 is water.

Mol	Chain	Residues	Atoms		ZeroOcc	AltConf
8	A	70	Total	O	0	0
			70	70		
8	B	64	Total	O	0	0
			64	64		

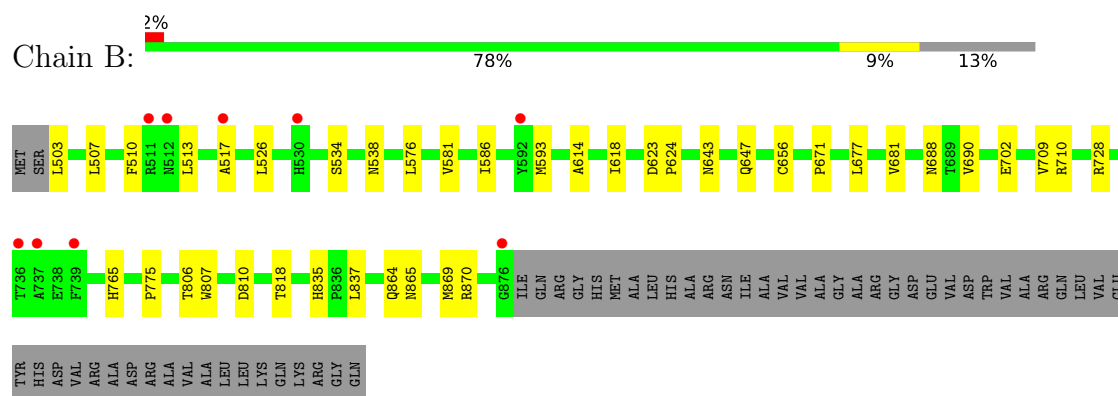
### 3 Residue-property plots [i](#)

These plots are drawn for all protein, RNA, DNA and oligosaccharide chains in the entry. The first graphic for a chain summarises the proportions of the various outlier classes displayed in the second graphic. The second graphic shows the sequence view annotated by issues in geometry and electron density. Residues are color-coded according to the number of geometric quality criteria for which they contain at least one outlier: green = 0, yellow = 1, orange = 2 and red = 3 or more. A red dot above a residue indicates a poor fit to the electron density ( $RSRZ > 2$ ). Stretches of 2 or more consecutive residues without any outlier are shown as a green connector. Residues present in the sample, but not in the model, are shown in grey.

- Molecule 1: 3-hydroxy-3-methylglutaryl-coenzyme A reductase



- Molecule 1: 3-hydroxy-3-methylglutaryl-coenzyme A reductase



## 4 Data and refinement statistics

Property	Value	Source
Space group	I 41 3 2	Depositor
Cell constants a, b, c, $\alpha$ , $\beta$ , $\gamma$	224.16Å 224.16Å 224.16Å 90.00° 90.00° 90.00°	Depositor
Resolution (Å)	47.79 – 2.50 47.79 – 2.50	Depositor EDS
% Data completeness (in resolution range)	98.1 (47.79-2.50) 98.1 (47.79-2.50)	Depositor EDS
$R_{merge}$	0.13	Depositor
$R_{sym}$	(Not available)	Depositor
$\langle I/\sigma(I) \rangle$ <sup>1</sup>	4.47 (at 2.51Å)	Xtriage
Refinement program	PHENIX 1.21.1_5286	Depositor
R, $R_{free}$	0.190 , 0.239 0.190 , 0.238	Depositor DCC
$R_{free}$ test set	1571 reflections (4.72%)	wwPDB-VP
Wilson B-factor (Å <sup>2</sup> )	34.2	Xtriage
Anisotropy	0.000	Xtriage
Bulk solvent $k_{sol}$ (e/Å <sup>3</sup> ), $B_{sol}$ (Å <sup>2</sup> )	0.32 , 36.7	EDS
L-test for twinning <sup>2</sup>	$\langle  L  \rangle = 0.50$ , $\langle L^2 \rangle = 0.33$	Xtriage
Estimated twinning fraction	No twinning to report.	Xtriage
$F_o, F_c$ correlation	0.94	EDS
Total number of atoms	6216	wwPDB-VP
Average B, all atoms (Å <sup>2</sup> )	38.0	wwPDB-VP

Xtriage's analysis on translational NCS is as follows: *The largest off-origin peak in the Patterson function is 1.81% of the height of the origin peak. No significant pseudotranslation is detected.*

<sup>1</sup>Intensities estimated from amplitudes.

<sup>2</sup>Theoretical values of  $\langle |L| \rangle$ ,  $\langle L^2 \rangle$  for acentric reflections are 0.5, 0.333 respectively for untwinned datasets, and 0.375, 0.2 for perfectly twinned datasets.

## 5 Model quality

### 5.1 Standard geometry

Bond lengths and bond angles in the following residue types are not validated in this section: MEV, NAI, COA, SO4, ZKE, A1AFY

The Z score for a bond length (or angle) is the number of standard deviations the observed value is removed from the expected value. A bond length (or angle) with  $|Z| > 5$  is considered an outlier worth inspection. RMSZ is the root-mean-square of all Z scores of the bond lengths (or angles).

Mol	Chain	Bond lengths		Bond angles	
		RMSZ	# Z  >5	RMSZ	# Z  >5
1	A	0.08	0/3159	0.25	0/4298
1	B	0.08	0/2841	0.23	0/3865
All	All	0.08	0/6000	0.24	0/8163

There are no bond length outliers.

There are no bond angle outliers.

There are no chirality outliers.

There are no planarity outliers.

### 5.2 Too-close contacts

In the following table, the Non-H and H(model) columns list the number of non-hydrogen atoms and hydrogen atoms in the chain respectively. The H(added) column lists the number of hydrogen atoms added and optimized by MolProbity. The Clashes column lists the number of clashes within the asymmetric unit, whereas Symm-Clashes lists symmetry-related clashes.

Mol	Chain	Non-H	H(model)	H(added)	Clashes	Symm-Clashes
1	A	3109	0	3127	22	0
1	B	2798	0	2822	24	0
2	A	48	0	32	1	0
3	A	5	0	0	0	0
4	A	10	0	0	0	0
5	A	58	0	0	0	0
6	B	44	0	27	2	0
7	B	10	0	11	0	0
8	A	70	0	0	0	0
8	B	64	0	0	1	0
All	All	6216	0	6019	45	0

The all-atom clashscore is defined as the number of clashes found per 1000 atoms (including hydrogen atoms). The all-atom clashscore for this structure is 4.

All (45) close contacts within the same asymmetric unit are listed below, sorted by their clash magnitude.

Atom-1	Atom-2	Interatomic distance (Å)	Clash overlap (Å)
2:A:501[Y]:COA:C1B	2:A:501[Y]:COA:O4B	1.65	1.27
1:B:702:GLU:HG3	1:B:709:VAL:HG23	1.73	0.71
1:A:114:ALA:HB3	1:A:177:LEU:HB2	1.75	0.69
1:B:614:ALA:HB3	1:B:677:LEU:HB2	1.74	0.68
1:B:586:ILE:HA	1:B:864:GLN:HE22	1.61	0.66
1:A:114:ALA:HB2	1:A:190:VAL:HB	1.81	0.63
1:A:250:ASP:OD2	1:B:710:ARG:NH1	2.34	0.60
1:B:614:ALA:HB2	1:B:690:VAL:HB	1.84	0.59
1:B:618:ILE:HG12	1:B:709:VAL:HG22	1.86	0.57
1:B:503:LEU:N	8:B:1104:HOH:O	2.39	0.54
1:A:75:VAL:HG11	1:A:356:ILE:HD13	1.93	0.51
1:A:110:PRO:HA	1:A:221:ARG:HG3	1.93	0.49
1:B:728:ARG:NH1	1:B:810:ASP:OD2	2.46	0.48
1:B:643:ASN:OD1	1:B:656:CYS:N	2.43	0.48
1:A:265:HIS:CE1	1:A:365:ASN:HD21	2.33	0.47
1:B:534:SER:OG	1:B:538:ASN:ND2	2.47	0.47
1:B:581:VAL:HB	1:B:775:PRO:HG3	1.98	0.46
1:B:835:HIS:CE1	1:B:837:LEU:HB2	2.51	0.46
1:A:118:ILE:HG12	1:A:209:VAL:HG22	1.96	0.46
1:A:119:VAL:O	1:A:208:GLN:N	2.43	0.45
1:B:624:PRO:HG3	1:B:671:PRO:HB2	1.98	0.45
1:A:141:LEU:HD23	1:A:197:VAL:HG12	1.98	0.45
1:A:307:TRP:NE1	1:A:369:MET:HE1	2.32	0.44
1:B:765:HIS:CE1	1:B:865:ASN:HD21	2.36	0.44
1:A:46:ILE:O	1:A:50:MET:HG3	2.17	0.44
1:A:416:ASP:OD2	1:B:647:GLN:N	2.42	0.43
1:A:202:GLU:HG3	1:A:207:GLY:O	2.19	0.43
1:B:526:LEU:HD21	1:B:576:LEU:HD12	2.01	0.43
1:A:158:ASP:OD1	1:A:159:ILE:N	2.51	0.43
1:A:225:ALA:HB2	1:A:358:VAL:HG23	2.00	0.43
1:B:507:LEU:HB3	1:B:510:PHE:HB2	2.01	0.43
1:A:389:ILE:HD13	1:A:389:ILE:HA	1.91	0.43
1:B:807:TRP:CD1	1:B:869:MET:HE1	2.54	0.42
1:B:688:ASN:HB2	6:B:1001[X]:NAI:O1A	2.20	0.42
1:A:113:HIS:HB2	1:A:215:SER:HB3	2.01	0.41
1:B:513:LEU:HB3	1:B:517:ALA:HB3	2.02	0.41
1:A:307:TRP:CH2	1:A:366:LEU:HB2	2.55	0.41

*Continued on next page...*

*Continued from previous page...*

Atom-1	Atom-2	Interatomic distance (Å)	Clash overlap (Å)
1:A:123:ASP:HB2	1:A:126:ASN:HB3	2.03	0.41
1:B:681:VAL:O	6:B:1001[X]:NAI:H2A	2.21	0.41
1:B:623:ASP:OD1	1:B:623:ASP:N	2.54	0.40
1:A:32:ASP:OD2	1:A:343[B]:ARG:NH2	2.36	0.40
1:A:273:ILE:O	1:A:277:ILE:HG12	2.22	0.40
1:B:593:MET:HE1	1:B:870:ARG:HD3	2.03	0.40
1:A:134:ARG:NH1	1:A:204:ILE:HG12	2.36	0.40
1:B:806:THR:OG1	1:B:818:THR:OG1	2.26	0.40

There are no symmetry-related clashes.

## 5.3 Torsion angles [i](#)

### 5.3.1 Protein backbone [i](#)

In the following table, the Percentiles column shows the percent Ramachandran outliers of the chain as a percentile score with respect to all X-ray entries followed by that with respect to entries of similar resolution.

The Analysed column shows the number of residues for which the backbone conformation was analysed, and the total number of residues.

Mol	Chain	Analysed	Favoured	Allowed	Outliers	Percentiles	
1	A	418/428 (98%)	403 (96%)	15 (4%)	0	100	100
1	B	376/428 (88%)	365 (97%)	11 (3%)	0	100	100
All	All	794/856 (93%)	768 (97%)	26 (3%)	0	100	100

There are no Ramachandran outliers to report.

### 5.3.2 Protein sidechains [i](#)

In the following table, the Percentiles column shows the percent sidechain outliers of the chain as a percentile score with respect to all X-ray entries followed by that with respect to entries of similar resolution.

The Analysed column shows the number of residues for which the sidechain conformation was analysed, and the total number of residues.

Mol	Chain	Analysed	Rotameric	Outliers	Percentiles	
1	A	314/327 (96%)	314 (100%)	0	100	100

*Continued on next page...*

*Continued from previous page...*

Mol	Chain	Analysed	Rotameric	Outliers	Percentiles	
1	B	289/327 (88%)	289 (100%)	0	100	100
All	All	603/654 (92%)	603 (100%)	0	100	100

There are no protein residues with a non-rotameric sidechain to report.

Sometimes sidechains can be flipped to improve hydrogen bonding and reduce clashes. All (6) such sidechains are listed below:

Mol	Chain	Res	Type
1	A	24	GLN
1	A	69	GLN
1	A	147	GLN
1	B	538	ASN
1	B	569	GLN
1	B	864	GLN

### 5.3.3 RNA [i](#)

There are no RNA molecules in this entry.

## 5.4 Non-standard residues in protein, DNA, RNA chains [i](#)

There are no non-standard protein/DNA/RNA residues in this entry.

## 5.5 Carbohydrates [i](#)

There are no oligosaccharides in this entry.

## 5.6 Ligand geometry [i](#)

6 ligands are modelled in this entry.

In the following table, the Counts columns list the number of bonds (or angles) for which Mogul statistics could be retrieved, the number of bonds (or angles) that are observed in the model and the number of bonds (or angles) that are defined in the Chemical Component Dictionary. The Link column lists molecule types, if any, to which the group is linked. The Z score for a bond length (or angle) is the number of standard deviations the observed value is removed from the expected value. A bond length (or angle) with  $|Z| > 2$  is considered an outlier worth inspection. RMSZ is the root-mean-square of all Z scores of the bond lengths (or angles).

Mol	Type	Chain	Res	Link	Bond lengths			Bond angles		
					Counts	RMSZ	# Z  > 2	Counts	RMSZ	# Z  > 2
4	A1AFY	A	503[Z]	-	8,9,9	1.74	1 (12%)	10,12,12	1.15	0
7	MEV	B	1002	-	8,9,9	1.37	1 (12%)	7,12,12	1.09	0
3	SO4	A	502	-	4,4,4	0.67	0	6,6,6	0.07	0
5	ZKE	A	504[J]	-	54,60,60	2.42	18 (33%)	78,90,90	2.25	15 (19%)
2	COA	A	501[Y]	-	47,50,50	3.20	19 (40%)	69,75,75	1.80	14 (20%)
6	NAI	B	1001[X]	-	47,48,48	1.59	8 (17%)	64,73,73	1.53	11 (17%)

In the following table, the Chirals column lists the number of chiral outliers, the number of chiral centers analysed, the number of these observed in the model and the number defined in the Chemical Component Dictionary. Similar counts are reported in the Torsion and Rings columns. '-' means no outliers of that kind were identified.

Mol	Type	Chain	Res	Link	Chirals	Torsions	Rings
4	A1AFY	A	503[Z]	-	-	0/9/9/9	-
7	MEV	B	1002	-	-	0/9/9/9	-
5	ZKE	A	504[J]	-	-	7/59/77/77	0/3/3/3
2	COA	A	501[Y]	-	-	7/48/64/64	0/3/3/3
6	NAI	B	1001[X]	-	-	7/29/72/72	0/5/5/5

All (47) bond length outliers are listed below:

Mol	Chain	Res	Type	Atoms	Z	Observed(Å)	Ideal(Å)
2	A	501[Y]	COA	O4B-C1B	10.26	1.65	1.42
2	A	501[Y]	COA	P1A-O3A	7.18	1.67	1.59
2	A	501[Y]	COA	P2A-O3A	6.97	1.67	1.59
2	A	501[Y]	COA	C9P-N8P	6.67	1.49	1.33
5	A	504[J]	ZKE	C10-N5	6.26	1.50	1.39
2	A	501[Y]	COA	C5P-N4P	6.22	1.48	1.33
2	A	501[Y]	COA	C2B-C1B	-6.21	1.34	1.53
2	A	501[Y]	COA	O4B-C4B	-6.09	1.31	1.45
5	A	504[J]	ZKE	P1-O5	5.32	1.65	1.59
5	A	504[J]	ZKE	P2-O5	5.27	1.65	1.59
5	A	504[J]	ZKE	C17-N6	5.09	1.45	1.33
5	A	504[J]	ZKE	C11-N3	5.06	1.45	1.33
2	A	501[Y]	COA	C6A-N6A	4.66	1.46	1.34
5	A	504[J]	ZKE	C13-N4	4.47	1.45	1.34
5	A	504[J]	ZKE	C16-N7	-4.34	1.30	1.37
6	B	1001[X]	NAI	PN-O5D	3.83	1.74	1.59
6	B	1001[X]	NAI	PA-O5B	3.77	1.74	1.59
5	A	504[J]	ZKE	C2-N7	-3.63	1.30	1.37

Continued on next page...

*Continued from previous page...*

Mol	Chain	Res	Type	Atoms	Z	Observed(Å)	Ideal(Å)
4	A	503[Z]	A1AFY	O01-C02	-3.61	1.39	1.44
5	A	504[J]	ZKE	O19-C18	3.48	1.50	1.42
6	B	1001[X]	NAI	PA-O3	3.31	1.63	1.59
5	A	504[J]	ZKE	P3-O18	3.30	1.65	1.59
6	B	1001[X]	NAI	PN-O3	3.19	1.62	1.59
2	A	501[Y]	COA	O3B-C3B	-3.13	1.33	1.44
5	A	504[J]	ZKE	C24-C25	-3.13	1.46	1.53
2	A	501[Y]	COA	P3B-O3B	3.07	1.64	1.59
6	B	1001[X]	NAI	C8A-N9A	2.87	1.42	1.37
2	A	501[Y]	COA	C5A-C4A	-2.85	1.34	1.39
7	B	1002	MEV	O7-C3	-2.76	1.40	1.44
5	A	504[J]	ZKE	O11-C6	-2.73	1.40	1.44
2	A	501[Y]	COA	C5A-N7A	-2.65	1.34	1.39
6	B	1001[X]	NAI	C5A-C4A	2.35	1.43	1.39
2	A	501[Y]	COA	OAP-CAP	-2.31	1.38	1.42
2	A	501[Y]	COA	P2A-O6A	2.28	1.68	1.59
5	A	504[J]	ZKE	O15-C17	-2.28	1.19	1.23
2	A	501[Y]	COA	C3B-C4B	2.25	1.58	1.52
5	A	504[J]	ZKE	C10-C2	2.24	1.43	1.39
5	A	504[J]	ZKE	P3-O14	-2.23	1.46	1.54
5	A	504[J]	ZKE	P3-O13	-2.20	1.46	1.54
2	A	501[Y]	COA	O9P-C9P	-2.19	1.19	1.23
6	B	1001[X]	NAI	C4A-N3A	2.19	1.38	1.34
5	A	504[J]	ZKE	O9-C11	-2.15	1.19	1.23
2	A	501[Y]	COA	C8A-N9A	-2.14	1.33	1.37
6	B	1001[X]	NAI	C2A-N1A	2.11	1.37	1.33
5	A	504[J]	ZKE	C10-C13	-2.08	1.35	1.41
2	A	501[Y]	COA	O5P-C5P	-2.06	1.19	1.23
2	A	501[Y]	COA	O2B-C2B	2.04	1.48	1.43

All (40) bond angle outliers are listed below:

Mol	Chain	Res	Type	Atoms	Z	Observed(°)	Ideal(°)
5	A	504[J]	ZKE	C2-N7-C16	13.18	119.58	105.74
5	A	504[J]	ZKE	C10-C2-N7	-6.49	98.74	105.81
2	A	501[Y]	COA	N6A-C6A-N1A	-5.95	105.13	118.38
2	A	501[Y]	COA	N3A-C2A-N1A	-5.65	120.03	128.58
2	A	501[Y]	COA	C5A-C4A-N3A	-4.95	119.90	126.72
2	A	501[Y]	COA	C5A-C6A-N6A	4.69	134.91	123.29
5	A	504[J]	ZKE	N2-C2-N7	4.54	134.88	127.17
2	A	501[Y]	COA	N9A-C8A-N7A	-4.07	108.17	113.94
5	A	504[J]	ZKE	N2-C1-N1	-4.03	122.48	128.58

*Continued on next page...*

*Continued from previous page...*

Mol	Chain	Res	Type	Atoms	Z	Observed(°)	Ideal(°)
6	B	1001[X]	NAI	O3-PN-O2N	-3.99	98.70	110.70
6	B	1001[X]	NAI	O1N-PN-O3	3.87	117.75	107.27
6	B	1001[X]	NAI	O2A-PA-O3	3.66	117.16	107.27
2	A	501[Y]	COA	C2A-N3A-C4A	3.39	120.11	111.83
6	B	1001[X]	NAI	O2A-PA-O1A	3.09	126.83	112.44
5	A	504[J]	ZKE	C18-N7-C16	-3.04	120.35	127.09
2	A	501[Y]	COA	N3A-C4A-N9A	2.96	132.21	127.17
6	B	1001[X]	NAI	O1N-PN-O2N	2.93	126.08	112.44
6	B	1001[X]	NAI	O3-PA-O1A	-2.92	101.93	110.70
2	A	501[Y]	COA	C5A-N7A-C8A	2.88	107.97	103.45
5	A	504[J]	ZKE	C2-N7-C18	-2.81	120.07	126.63
6	B	1001[X]	NAI	PA-O5B-C5B	-2.74	105.65	121.35
5	A	504[J]	ZKE	C10-N5-C16	-2.72	99.18	103.45
6	B	1001[X]	NAI	O5B-PA-O1A	-2.69	98.27	108.94
6	B	1001[X]	NAI	PN-O5D-C5D	-2.56	106.66	121.35
6	B	1001[X]	NAI	O5D-PN-O2N	-2.47	99.13	108.94
5	A	504[J]	ZKE	C25-C24-C18	2.45	105.28	99.89
5	A	504[J]	ZKE	O2-P1-O1	-2.39	101.33	112.44
5	A	504[J]	ZKE	O7-P2-O8	-2.38	101.38	112.44
5	A	504[J]	ZKE	P3-O18-C25	-2.37	117.11	123.43
5	A	504[J]	ZKE	C13-C10-C2	-2.21	114.16	117.18
2	A	501[Y]	COA	C4A-C5A-N7A	-2.20	108.07	110.58
6	B	1001[X]	NAI	N3A-C4A-N9A	2.16	130.84	127.17
5	A	504[J]	ZKE	N7-C16-N5	-2.16	110.87	113.94
5	A	504[J]	ZKE	O13-P3-O18	2.15	114.25	105.85
2	A	501[Y]	COA	C6P-C7P-N8P	-2.14	107.45	112.00
2	A	501[Y]	COA	C3B-C2B-C1B	2.11	104.54	99.89
2	A	501[Y]	COA	P3B-O3B-C3B	-2.08	117.87	123.43
5	A	504[J]	ZKE	O14-P3-O18	2.07	113.90	105.85
2	A	501[Y]	COA	C4A-N9A-C8A	2.06	107.90	105.74
2	A	501[Y]	COA	C6A-C5A-C4A	2.00	119.91	117.18

There are no chirality outliers.

All (21) torsion outliers are listed below:

Mol	Chain	Res	Type	Atoms
2	A	501[Y]	COA	CCP-O6A-P2A-O3A
2	A	501[Y]	COA	S1P-C2P-C3P-N4P
5	A	504[J]	ZKE	C21-O10-P2-O5
5	A	504[J]	ZKE	C21-O10-P2-O7
6	B	1001[X]	NAI	C5D-O5D-PN-O2N
6	B	1001[X]	NAI	C2D-C1D-N1N-C2N

*Continued on next page...*

*Continued from previous page...*

Mol	Chain	Res	Type	Atoms
6	B	1001[X]	NAI	C2D-C1D-N1N-C6N
2	A	501[Y]	COA	P1A-O3A-P2A-O6A
5	A	504[J]	ZKE	P1-O5-P2-O10
6	B	1001[X]	NAI	PA-O3-PN-O5D
2	A	501[Y]	COA	C5P-C6P-C7P-N8P
2	A	501[Y]	COA	C3B-O3B-P3B-O7A
2	A	501[Y]	COA	CCP-O6A-P2A-O4A
6	B	1001[X]	NAI	C5D-O5D-PN-O1N
2	A	501[Y]	COA	O4B-C4B-C5B-O5B
5	A	504[J]	ZKE	C11-C14-C15-N6
6	B	1001[X]	NAI	O4D-C1D-N1N-C2N
5	A	504[J]	ZKE	C3-C4-C6-C12
5	A	504[J]	ZKE	C3-C4-C6-O11
5	A	504[J]	ZKE	O3-C3-C4-C6
6	B	1001[X]	NAI	O4B-C1B-N9A-C8A

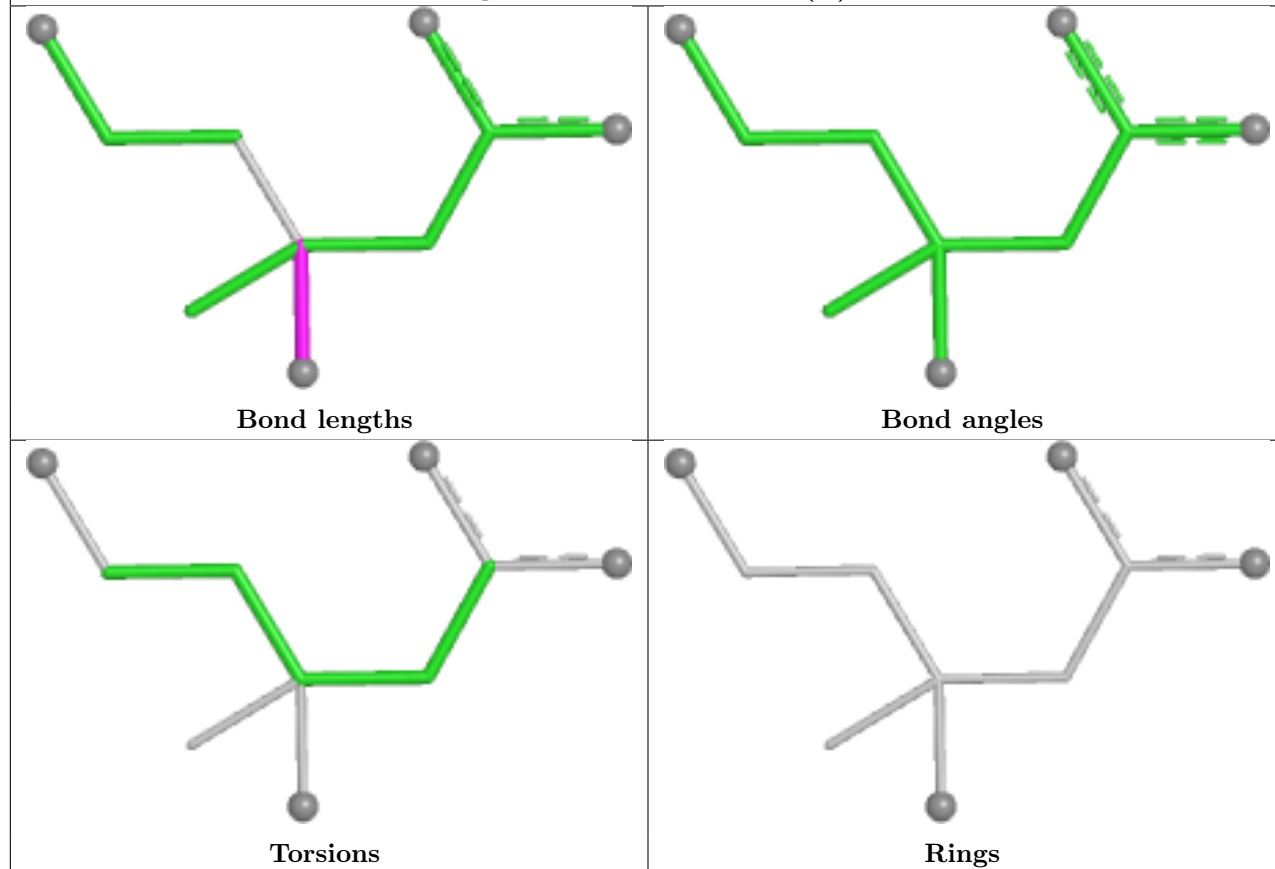
There are no ring outliers.

2 monomers are involved in 3 short contacts:

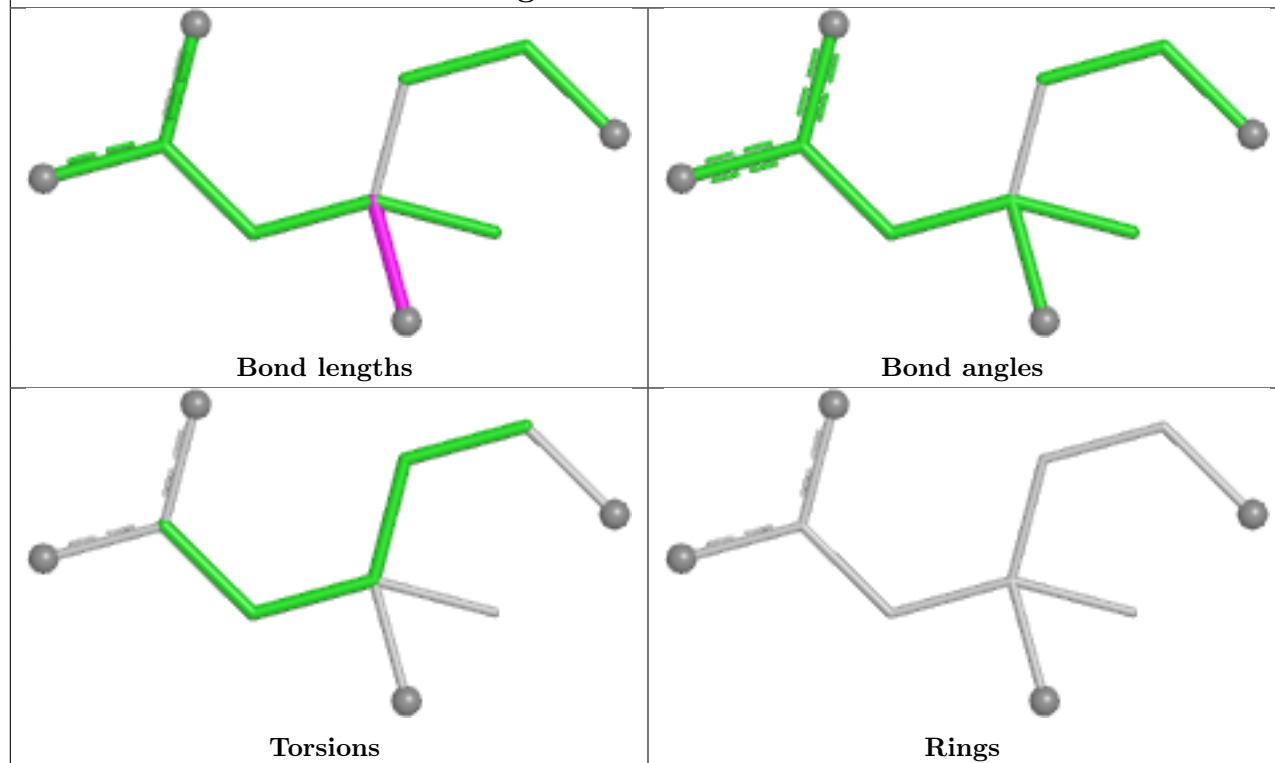
Mol	Chain	Res	Type	Clashes	Symm-Clashes
2	A	501[Y]	COA	1	0
6	B	1001[X]	NAI	2	0

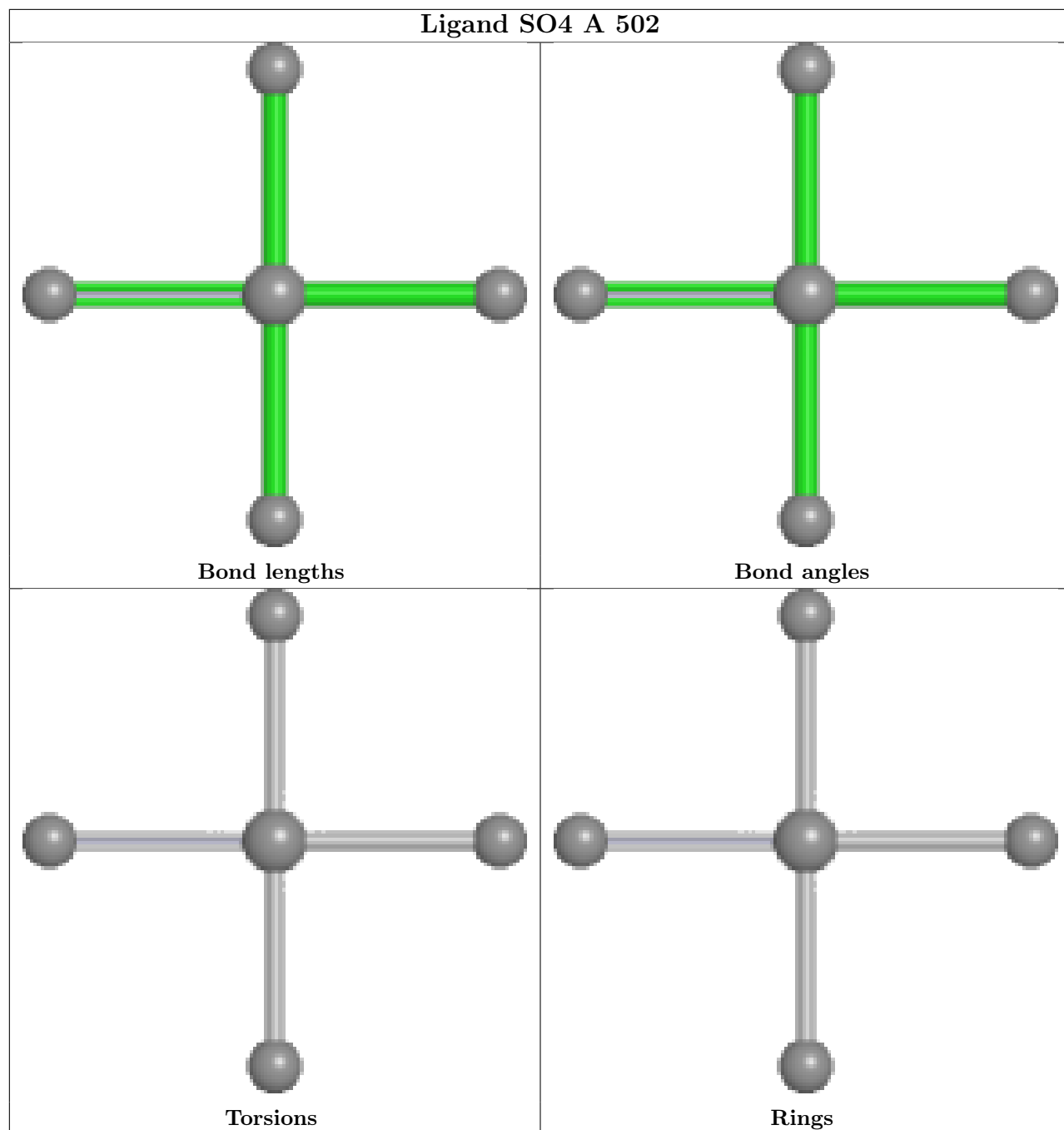
The following is a two-dimensional graphical depiction of Mogul quality analysis of bond lengths, bond angles, torsion angles, and ring geometry for all instances of the Ligand of Interest. In addition, ligands with molecular weight > 250 and outliers as shown on the validation Tables will also be included. For torsion angles, if less than 5% of the Mogul distribution of torsion angles is within 10 degrees of the torsion angle in question, then that torsion angle is considered an outlier. Any bond that is central to one or more torsion angles identified as an outlier by Mogul will be highlighted in the graph. For rings, the root-mean-square deviation (RMSD) between the ring in question and similar rings identified by Mogul is calculated over all ring torsion angles. If the average RMSD is greater than 60 degrees and the minimal RMSD between the ring in question and any Mogul-identified rings is also greater than 60 degrees, then that ring is considered an outlier. The outliers are highlighted in purple. The color gray indicates Mogul did not find sufficient equivalents in the CSD to analyse the geometry.

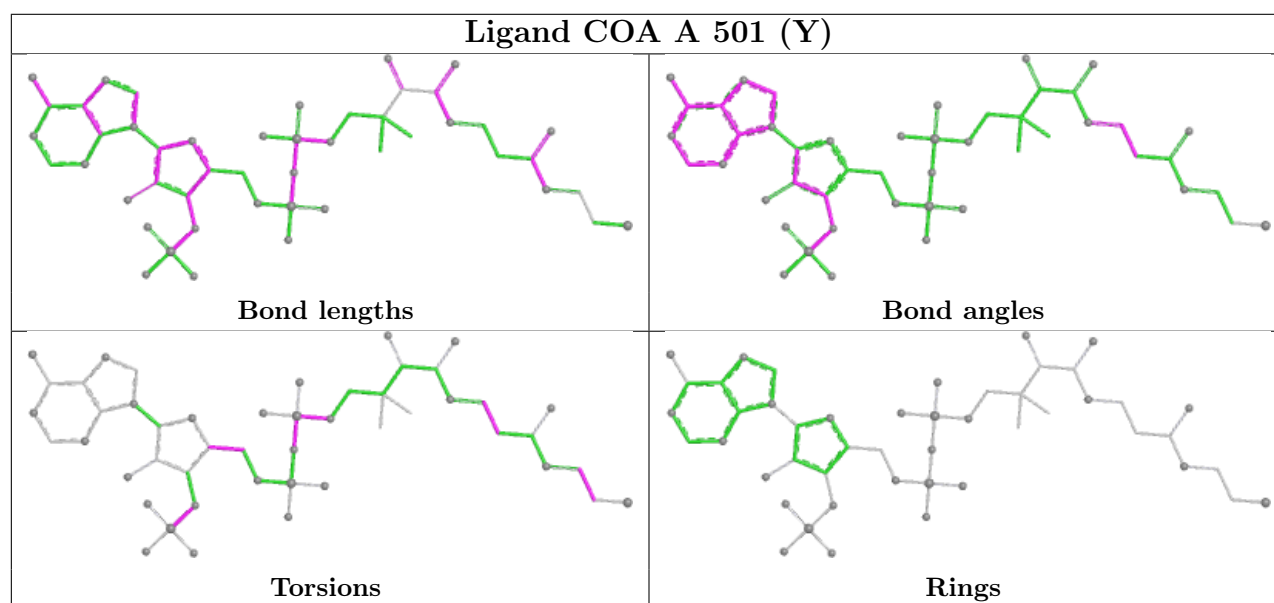
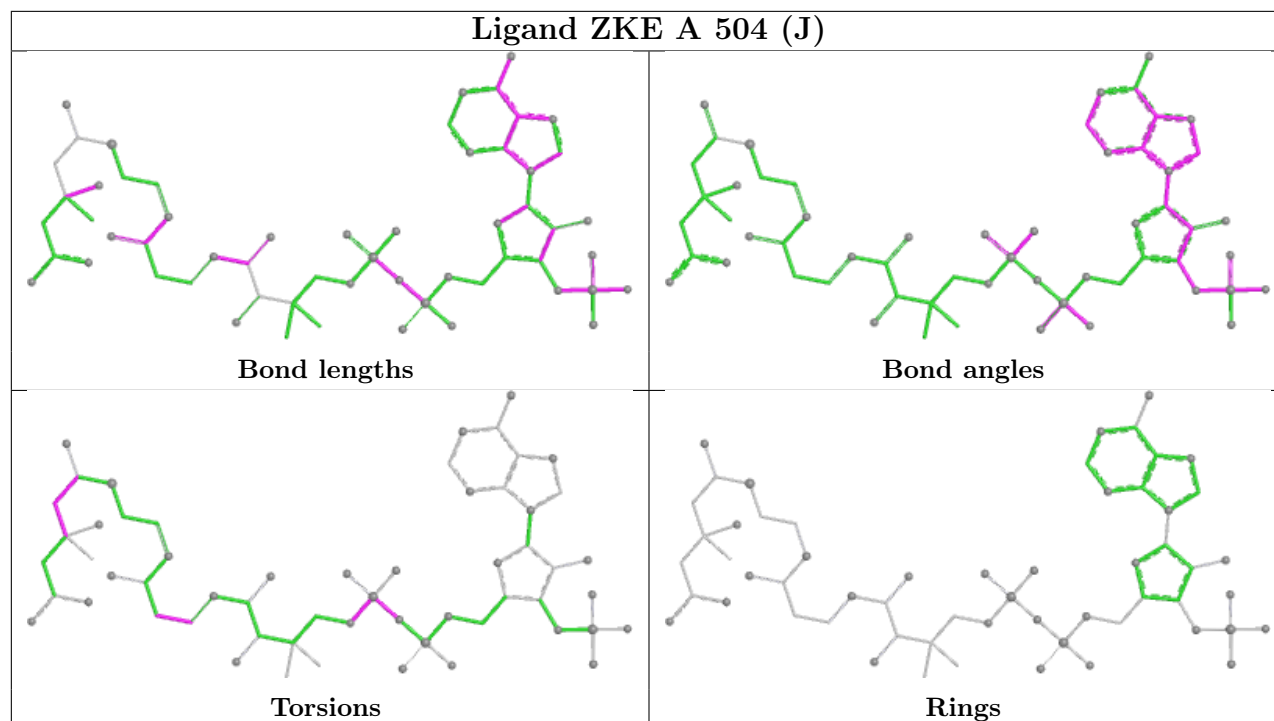
## Ligand A1AFY A 503 (Z)

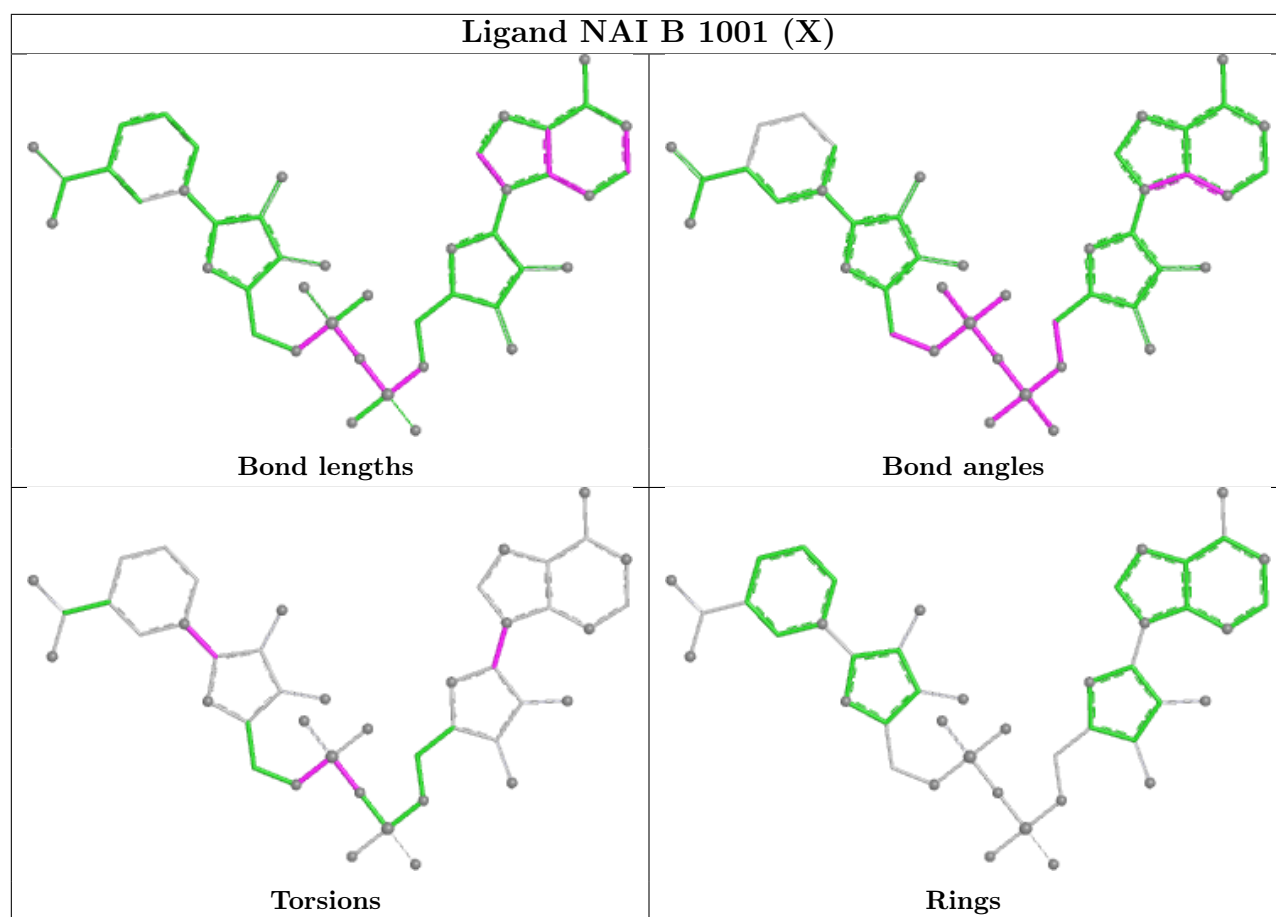


## Ligand MEV B 1002









## 5.7 Other polymers [i](#)

There are no such residues in this entry.

## 5.8 Polymer linkage issues [i](#)

There are no chain breaks in this entry.

## 6 Fit of model and data

### 6.1 Protein, DNA and RNA chains

In the following table, the column labelled ‘#RSRZ > 2’ contains the number (and percentage) of RSRZ outliers, followed by percent RSRZ outliers for the chain as percentile scores relative to all X-ray entries and entries of similar resolution. The OWAB column contains the minimum, median, 95<sup>th</sup> percentile and maximum values of the occupancy-weighted average B-factor per residue. The column labelled ‘Q < 0.9’ lists the number of (and percentage) of residues with an average occupancy less than 0.9.

Mol	Chain	Analysed	<RSRZ>	#RSRZ>2	OWAB(Å <sup>2</sup> )	Q<0.9
1	A	419/428 (97%)	0.03	11 (2%) 57 52	16, 35, 66, 82	11 (2%)
1	B	374/428 (87%)	-0.02	9 (2%) 59 55	18, 34, 62, 98	11 (2%)
All	All	793/856 (92%)	0.00	20 (2%) 58 54	16, 35, 65, 98	22 (2%)

All (20) RSRZ outliers are listed below:

Mol	Chain	Res	Type	RSRZ
1	B	876	GLY	4.9
1	B	739	PHE	3.7
1	A	402	TRP	3.4
1	A	400	VAL	3.4
1	A	397	GLY	2.9
1	B	737	ALA	2.8
1	A	30[A]	HIS	2.4
1	A	165	ALA	2.4
1	A	406	GLN	2.2
1	A	407	LEU	2.2
1	A	403	VAL	2.2
1	B	530	HIS	2.2
1	B	512	ASN	2.1
1	A	395	ALA	2.1
1	B	511	ARG	2.0
1	A	329	GLY	2.0
1	B	592	TYR	2.0
1	A	415	ALA	2.0
1	B	517	ALA	2.0
1	B	736	THR	2.0

## 6.2 Non-standard residues in protein, DNA, RNA chains [i](#)

There are no non-standard protein/DNA/RNA residues in this entry.

## 6.3 Carbohydrates [i](#)

There are no oligosaccharides in this entry.

## 6.4 Ligands [i](#)

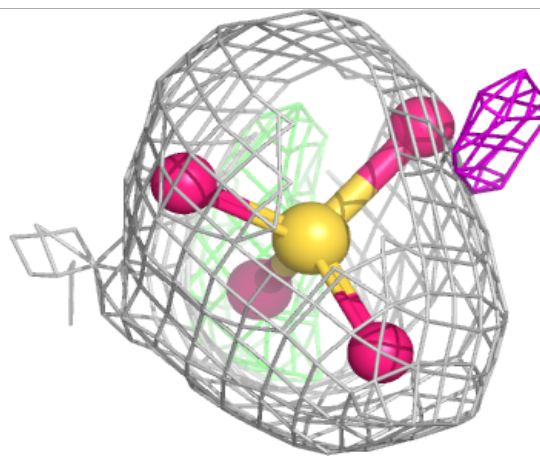
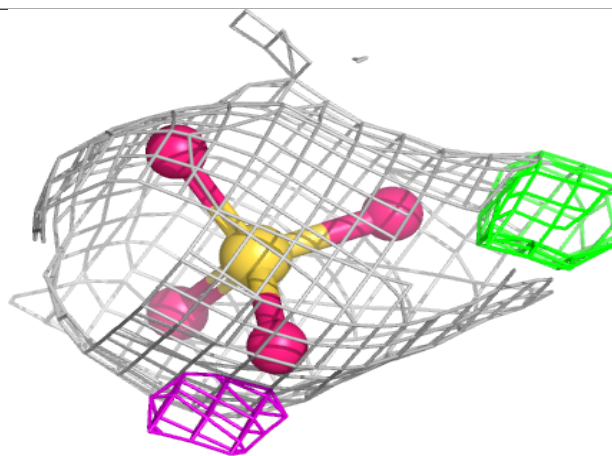
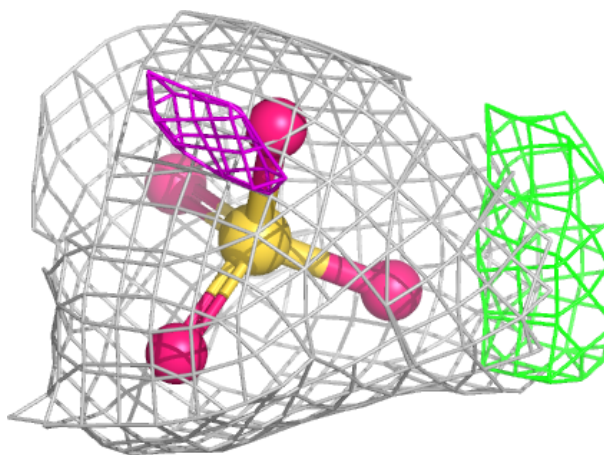
In the following table, the Atoms column lists the number of modelled atoms in the group and the number defined in the chemical component dictionary. The B-factors column lists the minimum, median, 95<sup>th</sup> percentile and maximum values of B factors of atoms in the group. The column labelled 'Q< 0.9' lists the number of atoms with occupancy less than 0.9.

Mol	Type	Chain	Res	Atoms	RSCC	RSR	B-factors( $\text{\AA}^2$ )	Q<0.9
3	SO4	A	502	5/5	0.84	0.13	50,52,64,70	0
5	ZKE	A	504[J]	58/58	0.84	0.12	24,48,67,70	58
2	COA	A	501[Y]	48/48	0.85	0.11	35,51,67,70	48
7	MEV	B	1002	10/10	0.86	0.15	34,47,55,64	0
6	NAI	B	1001[X]	44/44	0.94	0.08	23,36,43,47	0
4	A1AFY	A	503[Z]	10/10	0.96	0.08	24,27,30,32	10

The following is a graphical depiction of the model fit to experimental electron density of all instances of the Ligand of Interest. In addition, ligands with molecular weight > 250 and outliers as shown on the geometry validation Tables will also be included. Each fit is shown from different orientation to approximate a three-dimensional view.

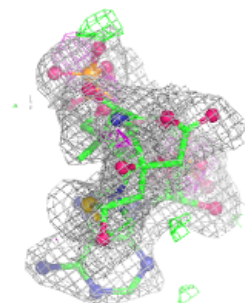
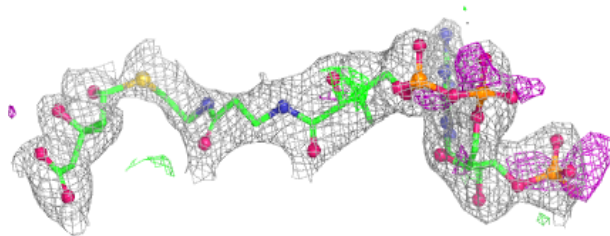
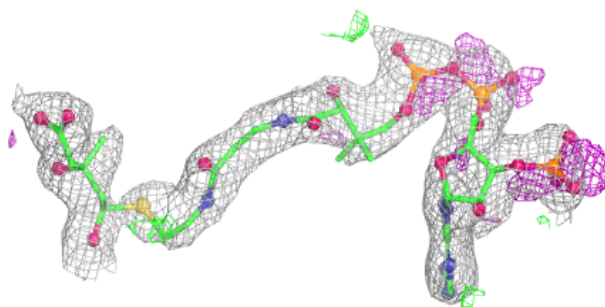
**Electron density around SO4 A 502:**

$2mF_o-DF_c$  (at 0.7 rmsd) in gray  
 $mF_o-DF_c$  (at 3 rmsd) in purple (negative)  
and green (positive)

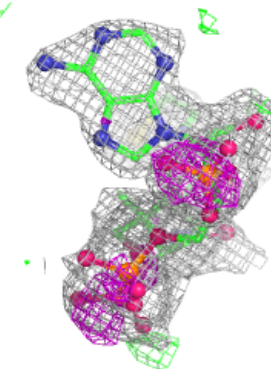
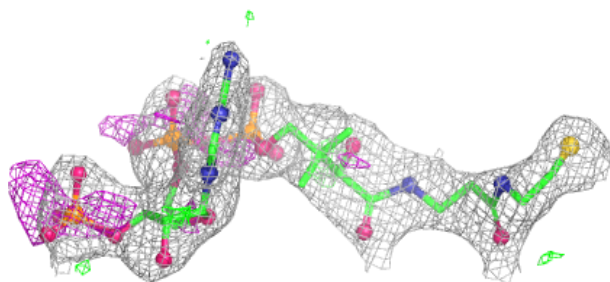
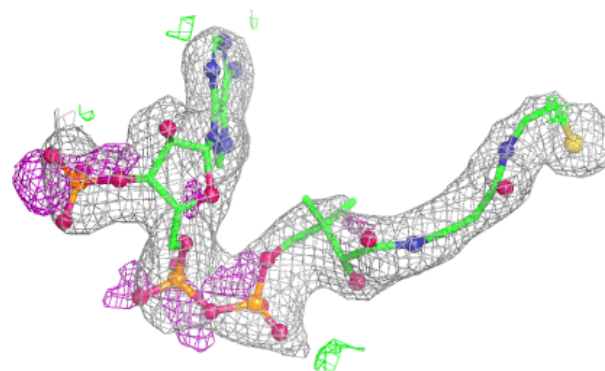


**Electron density around ZKE A 504 (J):**

$2mF_o-DF_c$  (at 0.7 rmsd) in gray  
 $mF_o-DF_c$  (at 3 rmsd) in purple (negative)  
and green (positive)

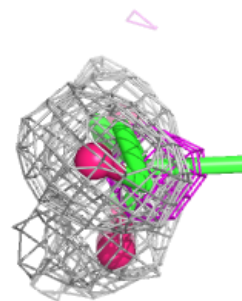
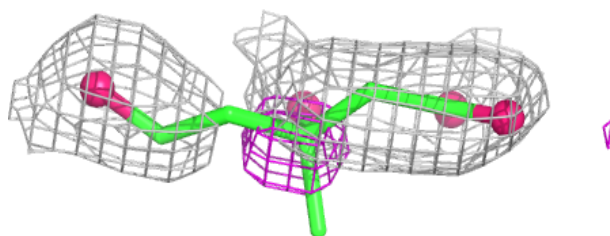
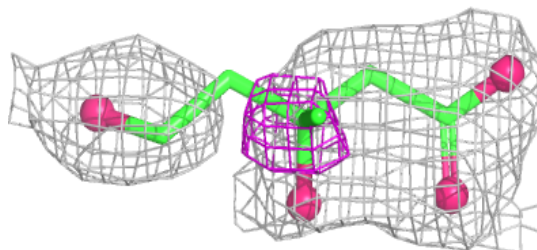
**Electron density around COA A 501 (Y):**

$2mF_o-DF_c$  (at 0.7 rmsd) in gray  
 $mF_o-DF_c$  (at 3 rmsd) in purple (negative)  
and green (positive)

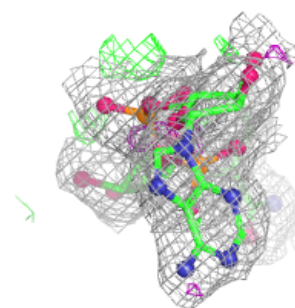
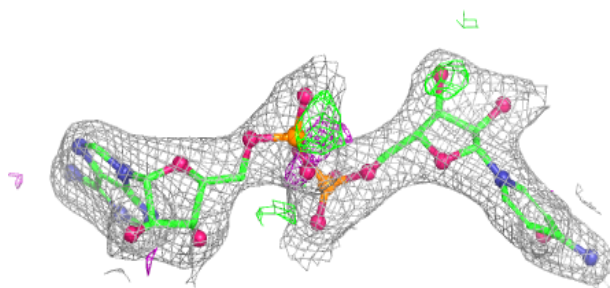
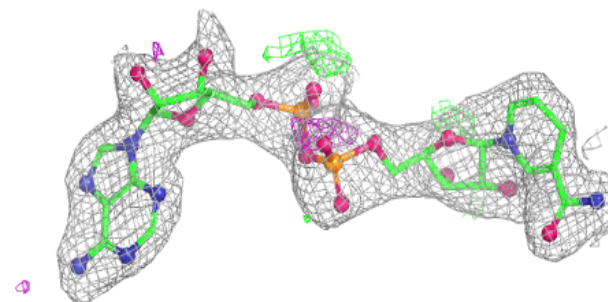


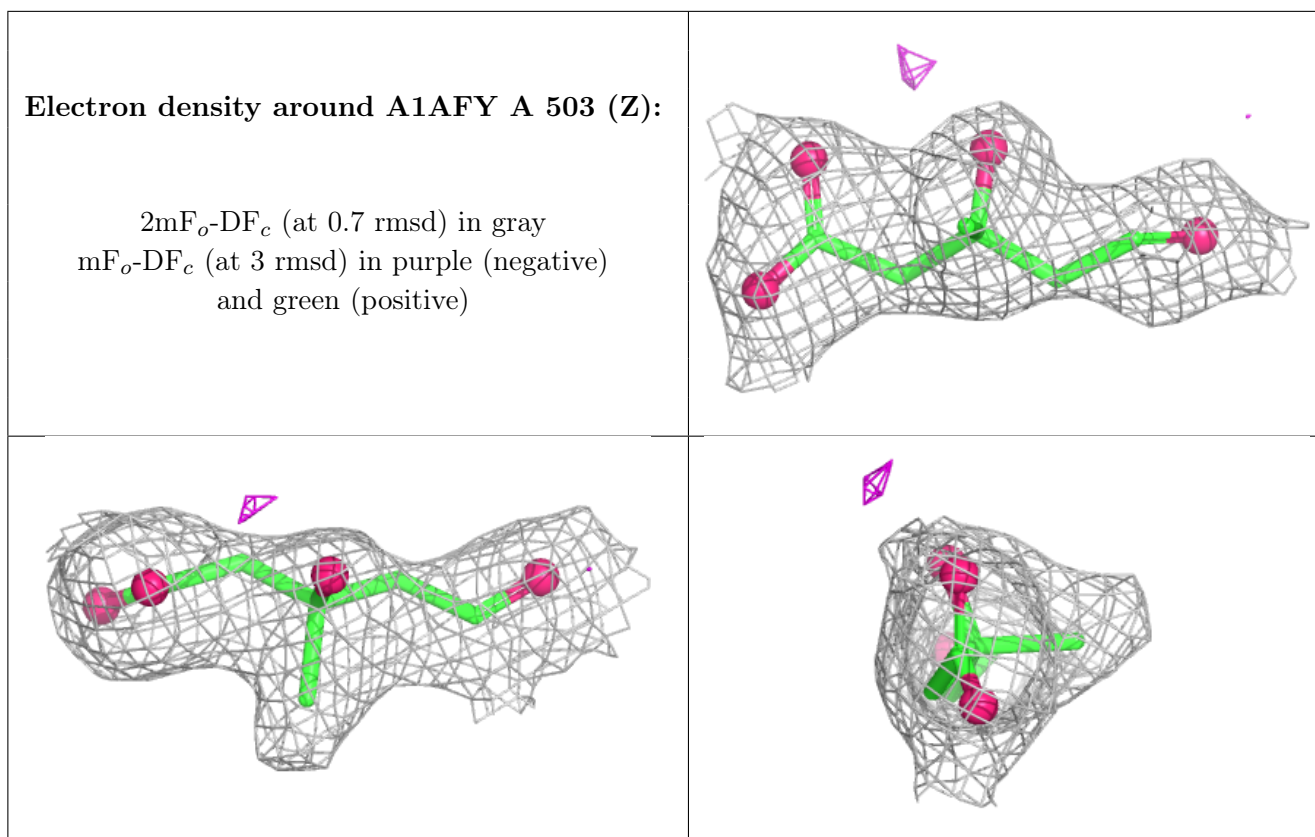
**Electron density around MEV B 1002:**

$2mF_o-DF_c$  (at 0.7 rmsd) in gray  
 $mF_o-DF_c$  (at 3 rmsd) in purple (negative)  
and green (positive)

**Electron density around NAI B 1001 (X):**

$2mF_o-DF_c$  (at 0.7 rmsd) in gray  
 $mF_o-DF_c$  (at 3 rmsd) in purple (negative)  
and green (positive)





## 6.5 Other polymers [i](#)

There are no such residues in this entry.