



Full wwPDB X-ray Structure Validation Report ⓘ

May 20, 2025 – 12:42 PM EDT

PDB ID : 9DOL / pdb_00009dol
Title : Potent inhibition of the protein arginine deiminases (PAD1-4) by targeting a Ca²⁺ dependent allosteric binding site
Authors : Liu, S.
Deposited on : 2024-09-19
Resolution : 1.77 Å(reported)

This is a Full wwPDB X-ray Structure Validation Report for a publicly released PDB entry.

We welcome your comments at validation@mail.wwpdb.org

A user guide is available at

<https://www.wwpdb.org/validation/2017/XrayValidationReportHelp>

with specific help available everywhere you see the ⓘ symbol.

The types of validation reports are described at

<http://www.wwpdb.org/validation/2017/FAQs#types>.

The following versions of software and data (see [references ⓘ](#)) were used in the production of this report:

MolProbity : 4-5-2 with Phenix2.0rc1
Mogul : 2022.3.0, CSD as543be (2022)
Xtriage (Phenix) : 2.0rc1
EDS : 3.0
buster-report : 1.1.7 (2018)
Percentile statistics : 20231227.v01 (using entries in the PDB archive December 27th 2023)
CCP4 : 9.0.006 (Gargrove)
Density-Fitness : 1.0.12
Ideal geometry (proteins) : Engh & Huber (2001)
Ideal geometry (DNA, RNA) : Parkinson et al. (1996)
Validation Pipeline (wwPDB-VP) : 2.43.1

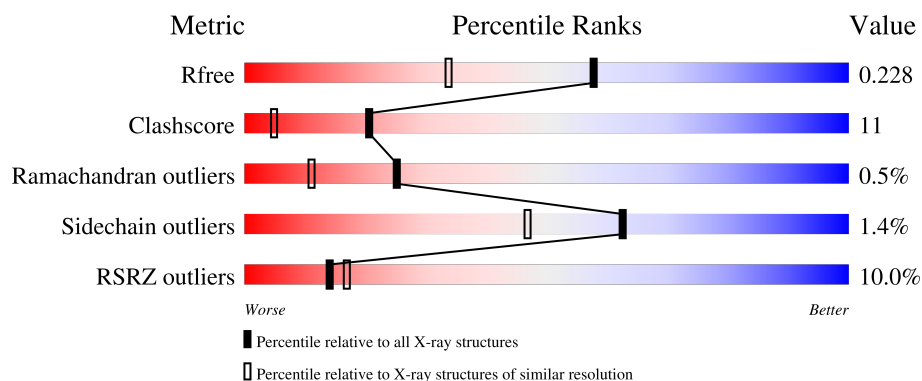
1 Overall quality at a glance

The following experimental techniques were used to determine the structure:

X-RAY DIFFRACTION

The reported resolution of this entry is 1.77 Å.

Percentile scores (ranging between 0-100) for global validation metrics of the entry are shown in the following graphic. The table shows the number of entries on which the scores are based.



Metric	Whole archive (#Entries)	Similar resolution (#Entries, resolution range(Å))
R_{free}	164625	1191 (1.78-1.78)
Clashscore	180529	1282 (1.78-1.78)
Ramachandran outliers	177936	1270 (1.78-1.78)
Sidechain outliers	177891	1270 (1.78-1.78)
RSRZ outliers	164620	1191 (1.78-1.78)

The table below summarises the geometric issues observed across the polymeric chains and their fit to the electron density. The red, orange, yellow and green segments of the lower bar indicate the fraction of residues that contain outliers for ≥ 3 , 2, 1 and 0 types of geometric quality criteria respectively. A grey segment represents the fraction of residues that are not modelled. The numeric value for each fraction is indicated below the corresponding segment, with a dot representing fractions $\leq 5\%$. The upper red bar (where present) indicates the fraction of residues that have poor fit to the electron density. The numeric value is given above the bar.

Mol	Chain	Length	Quality of chain
1	A	690	

2 Entry composition

There are 4 unique types of molecules in this entry. The entry contains 5608 atoms, of which 27 are hydrogens and 0 are deuteriums.

In the tables below, the ZeroOcc column contains the number of atoms modelled with zero occupancy, the AltConf column contains the number of residues with at least one atom in alternate conformation and the Trace column contains the number of residues modelled with at most 2 atoms.

- Molecule 1 is a protein called Protein-arginine deiminase type-2.

Mol	Chain	Residues	Atoms					ZeroOcc	AltConf	Trace
			Total	C	N	O	S			
1	A	650	5166	3328	850	958	30	0	9	0

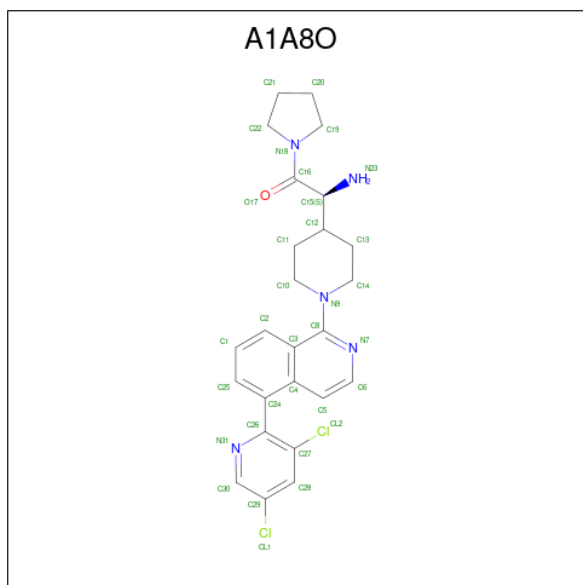
There are 25 discrepancies between the modelled and reference sequences:

Chain	Residue	Modelled	Actual	Comment	Reference
A	-20	MET	-	initiating methionine	UNP Q9Y2J8
A	-19	GLY	-	expression tag	UNP Q9Y2J8
A	-18	HIS	-	expression tag	UNP Q9Y2J8
A	-17	HIS	-	expression tag	UNP Q9Y2J8
A	-16	HIS	-	expression tag	UNP Q9Y2J8
A	-15	HIS	-	expression tag	UNP Q9Y2J8
A	-14	HIS	-	expression tag	UNP Q9Y2J8
A	-13	HIS	-	expression tag	UNP Q9Y2J8
A	-12	HIS	-	expression tag	UNP Q9Y2J8
A	-11	HIS	-	expression tag	UNP Q9Y2J8
A	-10	HIS	-	expression tag	UNP Q9Y2J8
A	-9	HIS	-	expression tag	UNP Q9Y2J8
A	-8	SER	-	expression tag	UNP Q9Y2J8
A	-7	SER	-	expression tag	UNP Q9Y2J8
A	-6	GLY	-	expression tag	UNP Q9Y2J8
A	-5	HIS	-	expression tag	UNP Q9Y2J8
A	-4	ILE	-	expression tag	UNP Q9Y2J8
A	-3	GLU	-	expression tag	UNP Q9Y2J8
A	-2	GLY	-	expression tag	UNP Q9Y2J8
A	-1	ARG	-	expression tag	UNP Q9Y2J8
A	0	HIS	-	expression tag	UNP Q9Y2J8
A	666	SER	-	expression tag	UNP Q9Y2J8
A	667	ARG	-	expression tag	UNP Q9Y2J8
A	668	ARG	-	expression tag	UNP Q9Y2J8
A	669	SER	-	expression tag	UNP Q9Y2J8

- Molecule 2 is CALCIUM ION (CCD ID: CA) (formula: Ca).

Mol	Chain	Residues	Atoms	ZeroOcc	AltConf
2	A	4	Total Ca 4 4	0	0

- Molecule 3 is (2S)-2-amino-2-{1-[(5M)-5-(3,5-dichloropyridin-2-yl)isoquinolin-1-yl]piperidin-4-yl}-1-(pyrrolidin-1-yl)ethan-1-one (CCD ID: A1A8O) (formula: C₂₅H₂₇Cl₂N₅O) (labeled as "Ligand of Interest" by depositor).



Mol	Chain	Residues	Atoms						ZeroOcc	AltConf
3	A	1	Total	C	Cl	H	N	O	0	0
			60	25	2	27	5	1		

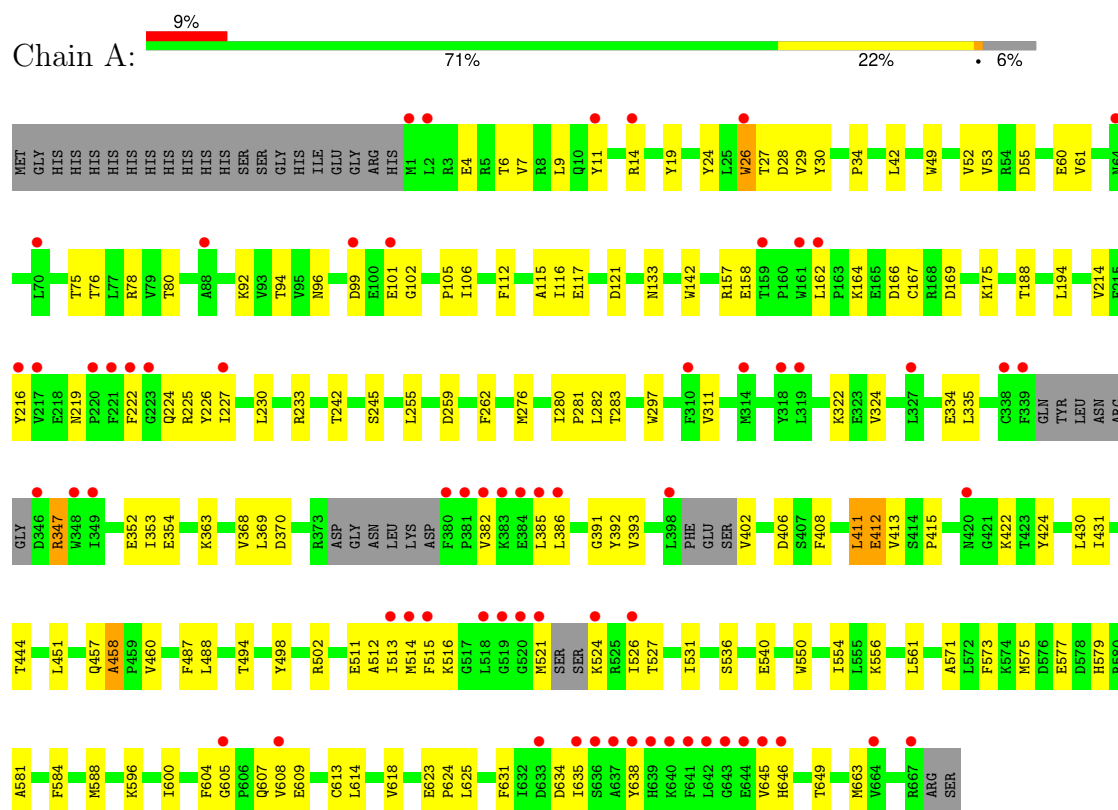
- Molecule 4 is water.

Mol	Chain	Residues	Atoms	ZeroOcc	AltConf
4	A	378	Total O 378 378	0	0

3 Residue-property plots [i](#)

These plots are drawn for all protein, RNA, DNA and oligosaccharide chains in the entry. The first graphic for a chain summarises the proportions of the various outlier classes displayed in the second graphic. The second graphic shows the sequence view annotated by issues in geometry and electron density. Residues are color-coded according to the number of geometric quality criteria for which they contain at least one outlier: green = 0, yellow = 1, orange = 2 and red = 3 or more. A red dot above a residue indicates a poor fit to the electron density ($RSRZ > 2$). Stretches of 2 or more consecutive residues without any outlier are shown as a green connector. Residues present in the sample, but not in the model, are shown in grey.

• Molecule 1: Protein-arginine deiminase type-2



4 Data and refinement statistics

Property	Value	Source
Space group	C 1 2 1	Depositor
Cell constants a, b, c, α , β , γ	201.13Å 51.05Å 76.21Å 90.00° 106.28° 90.00°	Depositor
Resolution (Å)	96.53 – 1.77 96.53 – 1.77	Depositor EDS
% Data completeness (in resolution range)	55.5 (96.53-1.77) 55.6 (96.53-1.77)	Depositor EDS
R_{merge}	0.05	Depositor
R_{sym}	(Not available)	Depositor
$\langle I/\sigma(I) \rangle$ ¹	1.00 (at 1.77Å)	Xtriage
Refinement program	PHENIX (1.20_4459: ???)	Depositor
R, R_{free}	0.185 , 0.227 0.185 , 0.228	Depositor DCC
R_{free} test set	3528 reflections (4.71%)	wwPDB-VP
Wilson B-factor (Å ²)	33.8	Xtriage
Anisotropy	0.111	Xtriage
Bulk solvent k_{sol} (e/Å ³), B_{sol} (Å ²)	0.33 , 43.3	EDS
L-test for twinning ²	$\langle L \rangle = 0.50$, $\langle L^2 \rangle = 0.34$	Xtriage
Estimated twinning fraction	No twinning to report.	Xtriage
F_o, F_c correlation	0.96	EDS
Total number of atoms	5608	wwPDB-VP
Average B, all atoms (Å ²)	47.0	wwPDB-VP

Xtriage's analysis on translational NCS is as follows: *The largest off-origin peak in the Patterson function is 5.35% of the height of the origin peak. No significant pseudotranslation is detected.*

¹Intensities estimated from amplitudes.

²Theoretical values of $\langle |L| \rangle$, $\langle L^2 \rangle$ for acentric reflections are 0.5, 0.333 respectively for untwinned datasets, and 0.375, 0.2 for perfectly twinned datasets.

5 Model quality

5.1 Standard geometry

Bond lengths and bond angles in the following residue types are not validated in this section: CA, A1A8O

The Z score for a bond length (or angle) is the number of standard deviations the observed value is removed from the expected value. A bond length (or angle) with $|Z| > 5$ is considered an outlier worth inspection. RMSZ is the root-mean-square of all Z scores of the bond lengths (or angles).

Mol	Chain	Bond lengths		Bond angles	
		RMSZ	$\# Z > 5$	RMSZ	$\# Z > 5$
1	A	0.13	0/5300	0.33	0/7197

There are no bond length outliers.

There are no bond angle outliers.

There are no chirality outliers.

There are no planarity outliers.

5.2 Too-close contacts

In the following table, the Non-H and H(model) columns list the number of non-hydrogen atoms and hydrogen atoms in the chain respectively. The H(added) column lists the number of hydrogen atoms added and optimized by MolProbity. The Clashes column lists the number of clashes within the asymmetric unit, whereas Symm-Clashes lists symmetry-related clashes.

Mol	Chain	Non-H	H(model)	H(added)	Clashes	Symm-Clashes
1	A	5166	0	5059	113	0
2	A	4	0	0	0	0
3	A	33	27	0	0	0
4	A	378	0	0	8	0
All	All	5581	27	5059	113	0

The all-atom clashscore is defined as the number of clashes found per 1000 atoms (including hydrogen atoms). The all-atom clashscore for this structure is 11.

All (113) close contacts within the same asymmetric unit are listed below, sorted by their clash magnitude.

Atom-1	Atom-2	Interatomic distance (Å)	Clash overlap (Å)
1:A:550:TRP:CZ3	1:A:554:ILE:HD11	2.19	0.77
1:A:347:ARG:HE	1:A:645:VAL:HB	1.56	0.71
1:A:24:TYR:HB2	1:A:80[B]:THR:HG22	1.71	0.71
1:A:11:TYR:HE1	1:A:34:PRO:HA	1.57	0.70
1:A:369:LEU:HD22	1:A:393:VAL:HB	1.74	0.68
1:A:24:TYR:CB	1:A:80[B]:THR:HG22	2.27	0.65
1:A:488:LEU:HD11	1:A:625:LEU:HD13	1.78	0.65
1:A:219:ASN:HD21	1:A:222:PHE:HB2	1.62	0.64
1:A:363:LYS:HD2	4:A:1086:HOH:O	1.96	0.64
1:A:521:MET:HA	1:A:524:LYS:HD3	1.80	0.64
1:A:49:TRP:HB2	1:A:80[A]:THR:HG23	1.79	0.64
1:A:52:VAL:HG23	1:A:61:VAL:HG21	1.79	0.63
1:A:216:TYR:HB3	1:A:227[B]:ILE:CG2	2.29	0.62
1:A:49:TRP:HB2	1:A:80[A]:THR:CG2	2.30	0.61
1:A:311:VAL:HG22	1:A:649:THR:HG22	1.82	0.61
1:A:24:TYR:CE2	1:A:78:ARG:HD2	2.35	0.61
1:A:524:LYS:HD2	1:A:524:LYS:N	2.15	0.61
1:A:11:TYR:CE1	1:A:34:PRO:HA	2.36	0.60
1:A:6:THR:HG1	1:A:26:TRP:CD1	2.19	0.60
1:A:60:GLU:HG3	4:A:855:HOH:O	2.03	0.58
1:A:175:LYS:HB3	1:A:226:TYR:OH	2.03	0.57
1:A:609:GLU:HA	1:A:609:GLU:OE1	2.05	0.56
1:A:402:VAL:HG12	1:A:444:THR:HG21	1.89	0.55
1:A:516:LYS:HD3	1:A:607:GLN:HG3	1.88	0.55
1:A:411:LEU:HD11	1:A:431:ILE:HG12	1.89	0.55
1:A:608:VAL:HG23	1:A:613:CYS:HB3	1.89	0.54
1:A:117:GLU:O	1:A:188:THR:HA	2.08	0.54
1:A:224:GLN:O	1:A:225:ARG:HD3	2.08	0.53
1:A:514:MET:HE3	1:A:584:PHE:CE1	2.43	0.53
1:A:219:ASN:ND2	1:A:222:PHE:HB2	2.24	0.53
1:A:577:GLU:H	1:A:577:GLU:CD	2.17	0.52
1:A:334:GLU:HG2	1:A:335:LEU:N	2.24	0.52
1:A:14:ARG:HB2	1:A:112:PHE:HE2	1.75	0.52
1:A:573:PHE:HB3	1:A:581:ALA:HB1	1.90	0.51
1:A:259[B]:ASP:OD1	1:A:262:PHE:HB3	2.10	0.51
1:A:216:TYR:HB3	1:A:227[B]:ILE:HG22	1.92	0.51
1:A:167:CYS:HB2	1:A:255:LEU:HD22	1.91	0.51
1:A:411:LEU:CD1	1:A:431:ILE:HG12	2.41	0.50
1:A:214:VAL:HB	1:A:230:LEU:HB2	1.92	0.50
1:A:430:LEU:HD23	1:A:460:VAL:HB	1.94	0.50
1:A:7:VAL:O	1:A:27:THR:HA	2.12	0.50
1:A:102:GLY:HA3	4:A:992:HOH:O	2.11	0.49

Continued on next page...

Continued from previous page...

Atom-1	Atom-2	Interatomic distance (Å)	Clash overlap (Å)
1:A:386:LEU:HD13	1:A:392:TYR:CB	2.43	0.49
1:A:411:LEU:HD21	1:A:451:LEU:HD11	1.93	0.49
1:A:515:PHE:HA	1:A:604:PHE:HB3	1.95	0.48
1:A:26:TRP:CZ3	1:A:76:THR:HG21	2.49	0.48
1:A:514:MET:HG3	1:A:604:PHE:O	2.13	0.48
1:A:550:TRP:CZ3	1:A:554:ILE:CD1	2.95	0.48
1:A:158:GLU:HG2	1:A:166:ASP:OD2	2.13	0.48
1:A:514:MET:HE3	1:A:584:PHE:HE1	1.77	0.48
1:A:242:THR:O	4:A:801:HOH:O	2.20	0.47
1:A:116[B]:ILE:HD13	1:A:194:LEU:HD23	1.95	0.47
1:A:6:THR:OG1	1:A:26:TRP:NE1	2.48	0.47
1:A:92:LYS:HE2	1:A:112:PHE:CE1	2.50	0.47
1:A:604:PHE:CD2	1:A:635:ILE:HD11	2.49	0.47
1:A:19:TYR:O	1:A:115:ALA:HA	2.14	0.47
1:A:162:LEU:C	1:A:162:LEU:HD12	2.40	0.46
1:A:638:TYR:CZ	1:A:646:HIS:HB2	2.51	0.46
1:A:276:MET:HE3	1:A:283:THR:OG1	2.15	0.46
1:A:536:SER:O	1:A:540:GLU:HG3	2.15	0.46
1:A:311:VAL:HG21	1:A:324:VAL:HG11	1.97	0.46
1:A:169:ASP:HB2	4:A:989:HOH:O	2.16	0.46
1:A:282:LEU:HD12	1:A:282:LEU:N	2.31	0.46
1:A:498:TYR:O	1:A:502:ARG:HG3	2.16	0.46
1:A:233:ARG:HA	4:A:1139:HOH:O	2.15	0.45
1:A:412:GLU:HG3	1:A:413:VAL:N	2.31	0.45
1:A:556:LYS:HA	1:A:561:LEU:HB2	1.98	0.45
1:A:370:ASP:OD2	1:A:392:TYR:OH	2.25	0.45
1:A:550:TRP:CH2	1:A:554:ILE:HD11	2.50	0.45
1:A:588:MET:SD	1:A:618:VAL:HG21	2.57	0.45
1:A:605:GLY:HA3	1:A:614:LEU:HD12	1.99	0.45
1:A:415:PRO:HG2	1:A:487:PHE:CG	2.51	0.45
1:A:514:MET:HE2	1:A:531:ILE:HD11	1.99	0.44
1:A:49:TRP:HB3	4:A:855:HOH:O	2.18	0.44
1:A:494:THR:HA	1:A:571:ALA:O	2.18	0.44
1:A:634:ASP:OD1	1:A:645:VAL:HG13	2.18	0.44
1:A:162:LEU:HD12	1:A:162:LEU:O	2.18	0.44
1:A:42:LEU:HA	1:A:94:THR:O	2.17	0.44
1:A:259[A]:ASP:OD2	4:A:802:HOH:O	2.20	0.44
1:A:282:LEU:HD12	1:A:282:LEU:H	1.84	0.43
1:A:116[B]:ILE:HD13	1:A:194:LEU:CD2	2.49	0.43
1:A:121:ASP:CG	1:A:133:ASN:H	2.27	0.43
1:A:142:TRP:HB3	1:A:663:MET:O	2.18	0.43

Continued on next page...

Continued from previous page...

Atom-1	Atom-2	Interatomic distance (Å)	Clash overlap (Å)
1:A:352:GLU:O	1:A:353:ILE:HD12	2.19	0.43
1:A:227[A]:ILE:HD12	1:A:227[A]:ILE:N	2.34	0.42
1:A:457:GLN:O	1:A:458:ALA:C	2.62	0.42
1:A:9:LEU:HD12	1:A:29:VAL:HG12	1.99	0.42
1:A:53:VAL:O	1:A:75:THR:HA	2.18	0.42
1:A:96:ASN:HB3	1:A:105:PRO:HB3	2.01	0.42
1:A:513:ILE:HD13	1:A:526:ILE:O	2.20	0.42
1:A:28:ASP:OD1	1:A:30:TYR:N	2.52	0.42
1:A:512:ALA:O	1:A:527:THR:HA	2.20	0.42
1:A:600:ILE:O	1:A:631:PHE:HA	2.20	0.42
1:A:162:LEU:CD1	1:A:164:LYS:O	2.67	0.42
1:A:422:LYS:HD2	1:A:424:TYR:CZ	2.54	0.42
1:A:6:THR:HG23	1:A:26:TRP:NE1	2.35	0.41
1:A:157:ARG:HD2	1:A:162:LEU:O	2.19	0.41
1:A:280:ILE:HG23	1:A:281:PRO:HD2	2.02	0.41
1:A:368:VAL:HG12	1:A:391:GLY:O	2.20	0.41
1:A:634:ASP:OD1	1:A:635:ILE:HG23	2.19	0.41
1:A:4:GLU:HG3	1:A:24:TYR:CE2	2.55	0.41
1:A:26:TRP:HZ3	1:A:76:THR:HG21	1.86	0.41
1:A:575:MET:CG	1:A:579:HIS:HA	2.51	0.41
1:A:623:GLU:N	1:A:624:PRO:CD	2.84	0.41
1:A:52:VAL:HG23	1:A:61:VAL:CG2	2.49	0.41
1:A:99:ASP:OD2	1:A:106:ILE:HG21	2.21	0.41
1:A:488:LEU:CD1	1:A:625:LEU:HD13	2.48	0.41
1:A:382:VAL:HB	1:A:385:LEU:HD12	2.03	0.40
1:A:297:TRP:CE2	1:A:369:LEU:HG	2.55	0.40
1:A:322:LYS:HB3	1:A:322:LYS:HE2	1.92	0.40
1:A:354:GLU:HB2	1:A:408:PHE:CD1	2.57	0.40
1:A:42:LEU:HD12	1:A:42:LEU:C	2.45	0.40
1:A:412:GLU:HG3	1:A:413:VAL:H	1.85	0.40

There are no symmetry-related clashes.

5.3 Torsion angles ⓘ

5.3.1 Protein backbone ⓘ

In the following table, the Percentiles column shows the percent Ramachandran outliers of the chain as a percentile score with respect to all X-ray entries followed by that with respect to entries of similar resolution.

The Analysed column shows the number of residues for which the backbone conformation was analysed, and the total number of residues.

Mol	Chain	Analysed	Favoured	Allowed	Outliers	Percentiles	
1	A	649/690 (94%)	622 (96%)	24 (4%)	3 (0%)	25	11

All (3) Ramachandran outliers are listed below:

Mol	Chain	Res	Type
1	A	101	GLU
1	A	55	ASP
1	A	458	ALA

5.3.2 Protein sidechains ⓘ

In the following table, the Percentiles column shows the percent sidechain outliers of the chain as a percentile score with respect to all X-ray entries followed by that with respect to entries of similar resolution.

The Analysed column shows the number of residues for which the sidechain conformation was analysed, and the total number of residues.

Mol	Chain	Analysed	Rotameric	Outliers	Percentiles	
1	A	564/612 (92%)	556 (99%)	8 (1%)	62	47

All (8) residues with a non-rotameric sidechain are listed below:

Mol	Chain	Res	Type
1	A	26	TRP
1	A	245	SER
1	A	347	ARG
1	A	406	ASP
1	A	411	LEU
1	A	412	GLU
1	A	511	GLU
1	A	596	LYS

Sometimes sidechains can be flipped to improve hydrogen bonding and reduce clashes. All (5) such sidechains are listed below:

Mol	Chain	Res	Type
1	A	96	ASN
1	A	219	ASN
1	A	317	ASN

Continued on next page...

Continued from previous page...

Mol	Chain	Res	Type
1	A	455	GLN
1	A	505	GLN

5.3.3 RNA ⓘ

There are no RNA molecules in this entry.

5.4 Non-standard residues in protein, DNA, RNA chains ⓘ

There are no non-standard protein/DNA/RNA residues in this entry.

5.5 Carbohydrates ⓘ

There are no oligosaccharides in this entry.

5.6 Ligand geometry ⓘ

Of 5 ligands modelled in this entry, 4 are monoatomic - leaving 1 for Mogul analysis.

In the following table, the Counts columns list the number of bonds (or angles) for which Mogul statistics could be retrieved, the number of bonds (or angles) that are observed in the model and the number of bonds (or angles) that are defined in the Chemical Component Dictionary. The Link column lists molecule types, if any, to which the group is linked. The Z score for a bond length (or angle) is the number of standard deviations the observed value is removed from the expected value. A bond length (or angle) with $|Z| > 2$ is considered an outlier worth inspection. RMSZ is the root-mean-square of all Z scores of the bond lengths (or angles).

Mol	Type	Chain	Res	Link	Bond lengths			Bond angles		
					Counts	RMSZ	# $ Z > 2$	Counts	RMSZ	# $ Z > 2$
3	A1A8O	A	705	-	36,37,37	0.68	1 (2%)	45,53,53	1.34	5 (11%)

In the following table, the Chirals column lists the number of chiral outliers, the number of chiral centers analysed, the number of these observed in the model and the number defined in the Chemical Component Dictionary. Similar counts are reported in the Torsion and Rings columns. '-' means no outliers of that kind were identified.

Mol	Type	Chain	Res	Link	Chirals	Torsions	Rings
3	A1A8O	A	705	-	-	0/20/47/47	0/5/5/5

All (1) bond length outliers are listed below:

Mol	Chain	Res	Type	Atoms	Z	Observed(Å)	Ideal(Å)
3	A	705	A1A8O	C15-N23	-3.60	1.37	1.47

All (5) bond angle outliers are listed below:

Mol	Chain	Res	Type	Atoms	Z	Observed(°)	Ideal(°)
3	A	705	A1A8O	C16-C15-N23	-6.17	99.71	110.09
3	A	705	A1A8O	C12-C15-C16	3.02	114.11	110.33
3	A	705	A1A8O	C28-C27-C26	-2.80	119.05	121.88
3	A	705	A1A8O	C24-C26-C27	-2.53	121.06	124.26
3	A	705	A1A8O	C3-C8-N9	-2.18	117.44	121.18

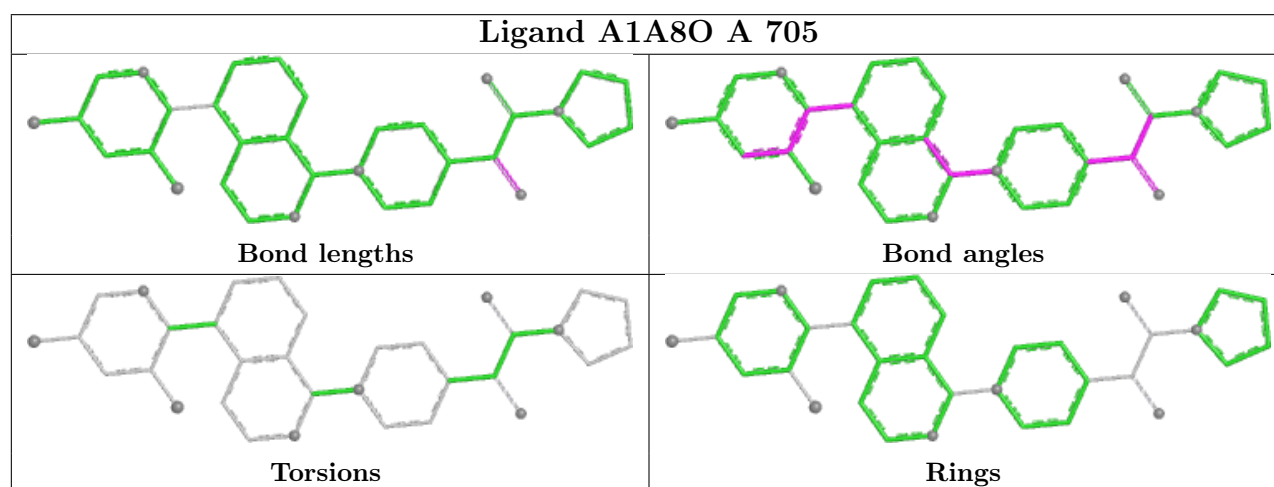
There are no chirality outliers.

There are no torsion outliers.

There are no ring outliers.

No monomer is involved in short contacts.

The following is a two-dimensional graphical depiction of Mogul quality analysis of bond lengths, bond angles, torsion angles, and ring geometry for all instances of the Ligand of Interest. In addition, ligands with molecular weight > 250 and outliers as shown on the validation Tables will also be included. For torsion angles, if less than 5% of the Mogul distribution of torsion angles is within 10 degrees of the torsion angle in question, then that torsion angle is considered an outlier. Any bond that is central to one or more torsion angles identified as an outlier by Mogul will be highlighted in the graph. For rings, the root-mean-square deviation (RMSD) between the ring in question and similar rings identified by Mogul is calculated over all ring torsion angles. If the average RMSD is greater than 60 degrees and the minimal RMSD between the ring in question and any Mogul-identified rings is also greater than 60 degrees, then that ring is considered an outlier. The outliers are highlighted in purple. The color gray indicates Mogul did not find sufficient equivalents in the CSD to analyse the geometry.



5.7 Other polymers [i](#)

There are no such residues in this entry.

5.8 Polymer linkage issues [i](#)

There are no chain breaks in this entry.

6 Fit of model and data [i](#)

6.1 Protein, DNA and RNA chains [i](#)

In the following table, the column labelled ‘#RSRZ> 2’ contains the number (and percentage) of RSRZ outliers, followed by percent RSRZ outliers for the chain as percentile scores relative to all X-ray entries and entries of similar resolution. The OWAB column contains the minimum, median, 95th percentile and maximum values of the occupancy-weighted average B-factor per residue. The column labelled ‘Q< 0.9’ lists the number of (and percentage) of residues with an average occupancy less than 0.9.

Mol	Chain	Analysed	<RSRZ>	#RSRZ>2	OWAB(Å ²)	Q<0.9
1	A	650/690 (94%)	0.49	65 (10%) 14 17	19, 43, 82, 115	9 (1%)

All (65) RSRZ outliers are listed below:

Mol	Chain	Res	Type	RSRZ
1	A	221	PHE	6.0
1	A	380	PHE	4.9
1	A	339	PHE	4.7
1	A	641	PHE	4.5
1	A	2	LEU	4.4
1	A	642	LEU	4.4
1	A	518	LEU	4.2
1	A	398	LEU	4.1
1	A	222	PHE	4.0
1	A	310	PHE	4.0
1	A	637	ALA	3.9
1	A	643	GLY	3.8
1	A	1	MET	3.8
1	A	220	PRO	3.7
1	A	162	LEU	3.6
1	A	348	TRP	3.5
1	A	638	TYR	3.5
1	A	161	TRP	3.4
1	A	88	ALA	3.4
1	A	381	PRO	3.4
1	A	667	ARG	3.4
1	A	645	VAL	3.3
1	A	636	SER	3.3
1	A	386	LEU	3.1
1	A	384	GLU	3.1
1	A	26	TRP	3.1
1	A	519	GLY	3.1

Continued on next page...

Continued from previous page...

Mol	Chain	Res	Type	RSRZ
1	A	664	VAL	3.0
1	A	216	TYR	3.0
1	A	382	VAL	3.0
1	A	223	GLY	3.0
1	A	639	HIS	2.9
1	A	520	GLY	2.9
1	A	605	GLY	2.9
1	A	319	LEU	2.8
1	A	635	ILE	2.8
1	A	385	LEU	2.7
1	A	159	THR	2.7
1	A	521	MET	2.7
1	A	640	LYS	2.7
1	A	349	ILE	2.5
1	A	338	CYS	2.5
1	A	101	GLU	2.5
1	A	346	ASP	2.4
1	A	608	VAL	2.4
1	A	515	PHE	2.4
1	A	513	ILE	2.4
1	A	514	MET	2.4
1	A	383	LYS	2.3
1	A	227[A]	ILE	2.3
1	A	217	VAL	2.3
1	A	314	MET	2.2
1	A	644	GLU	2.2
1	A	64	ASN	2.2
1	A	646	HIS	2.2
1	A	14	ARG	2.1
1	A	11	TYR	2.1
1	A	70	LEU	2.1
1	A	318	TYR	2.1
1	A	526	ILE	2.1
1	A	633	ASP	2.1
1	A	524	LYS	2.0
1	A	327	LEU	2.0
1	A	99	ASP	2.0
1	A	420	ASN	2.0

6.2 Non-standard residues in protein, DNA, RNA chains ⓘ

There are no non-standard protein/DNA/RNA residues in this entry.

6.3 Carbohydrates [i](#)

There are no monosaccharides in this entry.

6.4 Ligands [i](#)

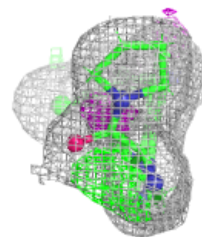
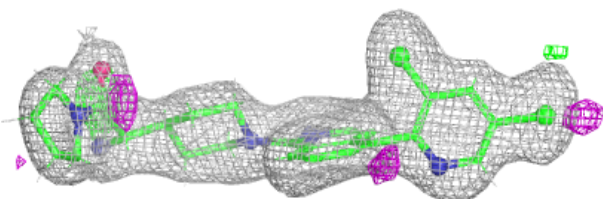
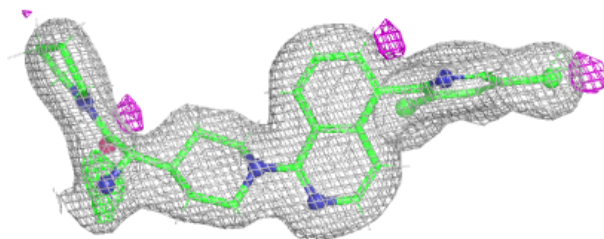
In the following table, the Atoms column lists the number of modelled atoms in the group and the number defined in the chemical component dictionary. The B-factors column lists the minimum, median, 95th percentile and maximum values of B factors of atoms in the group. The column labelled 'Q< 0.9' lists the number of atoms with occupancy less than 0.9.

Mol	Type	Chain	Res	Atoms	RSCC	RSR	B-factors(\AA^2)	Q<0.9
3	A1A8O	A	705	33/33	0.94	0.08	31,44,58,59	0
2	CA	A	703	1/1	0.97	0.08	64,64,64,64	0
2	CA	A	701	1/1	0.97	0.04	56,56,56,56	0
2	CA	A	704	1/1	0.99	0.05	60,60,60,60	0
2	CA	A	702	1/1	1.00	0.02	43,43,43,43	0

The following is a graphical depiction of the model fit to experimental electron density of all instances of the Ligand of Interest. In addition, ligands with molecular weight > 250 and outliers as shown on the geometry validation Tables will also be included. Each fit is shown from different orientation to approximate a three-dimensional view.

Electron density around A1A8O A 705:

2mF_o-DF_c (at 0.7 rmsd) in gray
mF_o-DF_c (at 3 rmsd) in purple (negative)
and green (positive)



6.5 Other polymers [i](#)

There are no such residues in this entry.