



Full wwPDB X-ray Structure Validation Report ⓘ

Mar 12, 2026 – 04:50 PM UTC

PDB ID : 9DMX / pdb_00009dmx
Title : Crystal structure of shark UrIg2 V-C1-C2-C3 domains
Authors : Stanfield, R.L.; Wilson, I.A.
Deposited on : 2024-09-16
Resolution : 2.81 Å(reported)

This is a Full wwPDB X-ray Structure Validation Report for a publicly released PDB entry.

We welcome your comments at validation@mail.wwpdb.org

A user guide is available at

<https://www.wwpdb.org/validation/2017/XrayValidationReportHelp>

with specific help available everywhere you see the ⓘ symbol.

The types of validation reports are described at

<http://www.wwpdb.org/validation/2017/FAQs#types>.

The following versions of software and data (see [references ⓘ](#)) were used in the production of this report:

MolProbity : 4-5-2 with Phenix2.0
Mogul : 2022.3.0, CSD as543be (2022)
Xtriage (Phenix) : 2.0
EDS : 3.0
Percentile statistics : 20250101.v01 (using entries in the PDB archive January 1st 2025)
CCP4 : 9.0.010 (Gargrove)
Density-Fitness : 1.0.12
Ideal geometry (proteins) : Engh & Huber (2001)
Ideal geometry (DNA, RNA) : Parkinson et al. (1996)
Validation Pipeline (wwPDB-VP) : 2.49

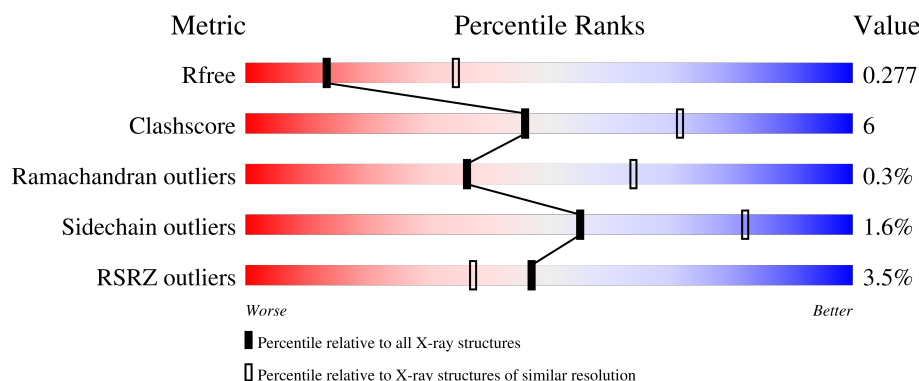
1 Overall quality at a glance

The following experimental techniques were used to determine the structure:

X-RAY DIFFRACTION

The reported resolution of this entry is 2.81 Å.

Percentile scores (ranging between 0-100) for global validation metrics of the entry are shown in the following graphic. The table shows the number of entries on which the scores are based.



Metric	Whole archive (#Entries)	Similar resolution (#Entries, resolution range(Å))
R_{free}	180053	4591 (2.84-2.80)
Clashscore	190562	5010 (2.84-2.80)
Ramachandran outliers	187476	4916 (2.84-2.80)
Sidechain outliers	187428	4918 (2.84-2.80)
RSRZ outliers	180081	4594 (2.84-2.80)

The table below summarises the geometric issues observed across the polymeric chains and their fit to the electron density. The red, orange, yellow and green segments of the lower bar indicate the fraction of residues that contain outliers for ≥ 3 , 2, 1 and 0 types of geometric quality criteria respectively. A grey segment represents the fraction of residues that are not modelled. The numeric value for each fraction is indicated below the corresponding segment, with a dot representing fractions $\leq 5\%$. The upper red bar (where present) indicates the fraction of residues that have poor fit to the electron density. The numeric value is given above the bar.

Mol	Chain	Length	Quality of chain
1	A	457	
1	B	457	
2	C	4	
3	D	2	

2 Entry composition [i](#)

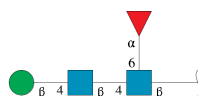
There are 6 unique types of molecules in this entry. The entry contains 6969 atoms, of which 0 are hydrogens and 0 are deuteriums.

In the tables below, the ZeroOcc column contains the number of atoms modelled with zero occupancy, the AltConf column contains the number of residues with at least one atom in alternate conformation and the Trace column contains the number of residues modelled with at most 2 atoms.

- Molecule 1 is a protein called UrIg2 V-C1-C2-C3.

Mol	Chain	Residues	Atoms					ZeroOcc	AltConf	Trace
1	A	434	Total	C	N	O	S	0	0	0
			3407	2136	608	642	21			
1	B	435	Total	C	N	O	S	0	0	0
			3410	2135	609	645	21			

- Molecule 2 is an oligosaccharide called beta-D-mannopyranose-(1-4)-2-acetamido-2-deoxy-beta-D-glucopyranose-(1-4)-[alpha-L-fucopyranose-(1-6)]2-acetamido-2-deoxy-beta-D-glucopyranose.



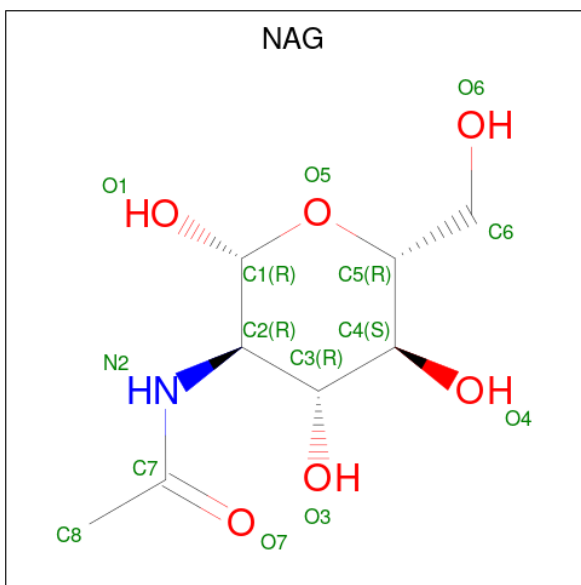
Mol	Chain	Residues	Atoms				ZeroOcc	AltConf	Trace
2	C	4	Total	C	N	O	0	0	0
			49	28	2	19			

- Molecule 3 is an oligosaccharide called 2-acetamido-2-deoxy-beta-D-glucopyranose-(1-4)-2-acetamido-2-deoxy-beta-D-glucopyranose.



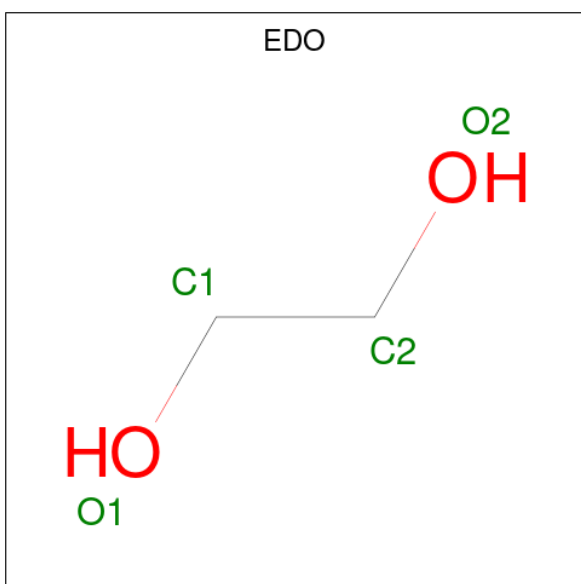
Mol	Chain	Residues	Atoms				ZeroOcc	AltConf	Trace
3	D	2	Total	C	N	O	0	0	0
			28	16	2	10			

- Molecule 4 is 2-acetamido-2-deoxy-beta-D-glucopyranose (CCD ID: NAG) (formula: C₈H₁₅NO₆).



Mol	Chain	Residues	Atoms				ZeroOcc	AltConf
4	A	1	Total	C	N	O	0	0
			14	8	1	5		
4	A	1	Total	C	N	O	0	0
			14	8	1	5		
4	A	1	Total	C	N	O	0	0
			14	8	1	5		
4	B	1	Total	C	N	O	0	0
			14	8	1	5		
4	B	1	Total	C	N	O	0	0
			14	8	1	5		

- Molecule 5 is 1,2-ETHANEDIOL (CCD ID: EDO) (formula: C₂H₆O₂).



Mol	Chain	Residues	Atoms			ZeroOcc	AltConf
5	A	1	Total	C	O	0	0
			4	2	2		

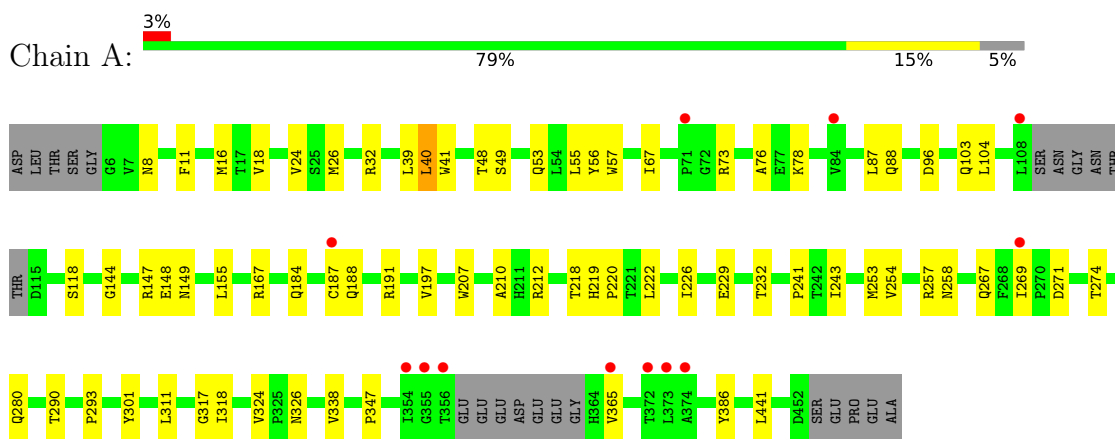
- Molecule 6 is water.

Mol	Chain	Residues	Atoms		ZeroOcc	AltConf
6	B	1	Total	O	0	0
			1	1		

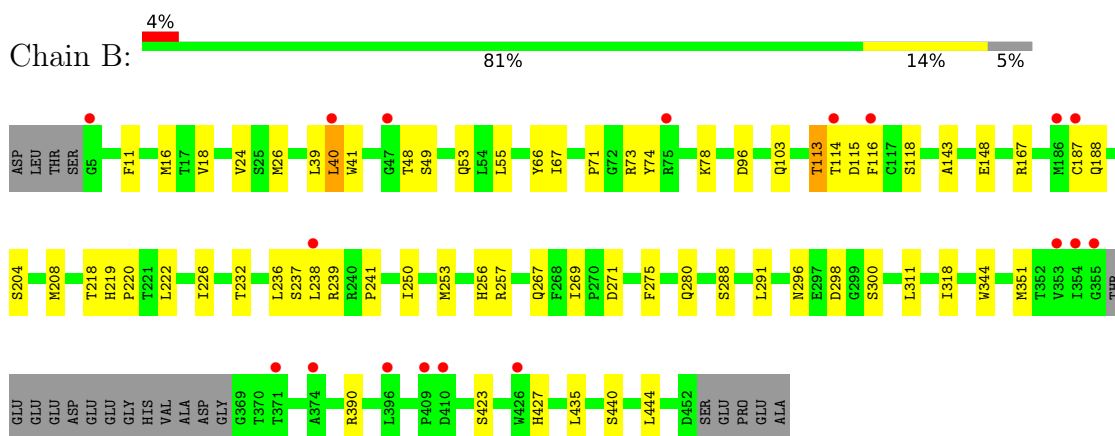
3 Residue-property plots [i](#)

These plots are drawn for all protein, RNA, DNA and oligosaccharide chains in the entry. The first graphic for a chain summarises the proportions of the various outlier classes displayed in the second graphic. The second graphic shows the sequence view annotated by issues in geometry and electron density. Residues are color-coded according to the number of geometric quality criteria for which they contain at least one outlier: green = 0, yellow = 1, orange = 2 and red = 3 or more. A red dot above a residue indicates a poor fit to the electron density ($RSRZ > 2$). Stretches of 2 or more consecutive residues without any outlier are shown as a green connector. Residues present in the sample, but not in the model, are shown in grey.

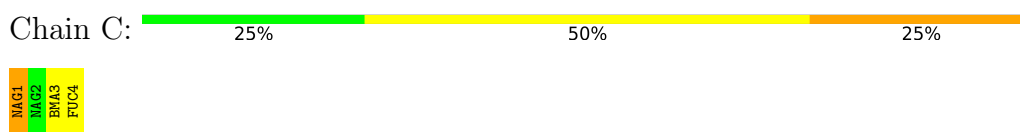
- Molecule 1: UrIg2 V-C1-C2-C3



- Molecule 1: UrIg2 V-C1-C2-C3



- Molecule 2: beta-D-mannopyranose-(1-4)-2-acetamido-2-deoxy-beta-D-glucopyranose-(1-4)-[alpha-L-fucopyranose-(1-6)]2-acetamido-2-deoxy-beta-D-glucopyranose



- Molecule 3: 2-acetamido-2-deoxy-beta-D-glucopyranose-(1-4)-2-acetamido-2-deoxy-beta-D-glucopyranose

Chain D:



4 Data and refinement statistics

Property	Value	Source
Space group	P 21 21 21	Depositor
Cell constants a, b, c, α , β , γ	80.95Å 97.38Å 176.78Å 90.00° 90.00° 90.00°	Depositor
Resolution (Å)	47.64 – 2.81 47.64 – 2.81	Depositor EDS
% Data completeness (in resolution range)	98.2 (47.64-2.81) 98.6 (47.64-2.81)	Depositor EDS
R_{merge}	0.12	Depositor
R_{sym}	(Not available)	Depositor
$\langle I/\sigma(I) \rangle$ ¹	1.47 (at 2.81Å)	Xtriage
Refinement program	PHENIX 1.21rc1_5127	Depositor
R, R_{free}	0.249 , 0.275 0.250 , 0.277	Depositor DCC
R_{free} test set	1708 reflections (4.93%)	wwPDB-VP
Wilson B-factor (Å ²)	73.8	Xtriage
Anisotropy	0.254	Xtriage
Bulk solvent k_{sol} (e/Å ³), B_{sol} (Å ²)	0.30 , 35.9	EDS
L-test for twinning ²	$\langle L \rangle = 0.48$, $\langle L^2 \rangle = 0.31$	Xtriage
Estimated twinning fraction	No twinning to report.	Xtriage
F_o, F_c correlation	0.92	EDS
Total number of atoms	6969	wwPDB-VP
Average B, all atoms (Å ²)	86.0	wwPDB-VP

Xtriage's analysis on translational NCS is as follows: *The largest off-origin peak in the Patterson function is 11.14% of the height of the origin peak. No significant pseudotranslation is detected.*

¹Intensities estimated from amplitudes.

²Theoretical values of $\langle |L| \rangle$, $\langle L^2 \rangle$ for acentric reflections are 0.5, 0.333 respectively for untwinned datasets, and 0.375, 0.2 for perfectly twinned datasets.

5 Model quality

5.1 Standard geometry

Bond lengths and bond angles in the following residue types are not validated in this section: FUC, BMA, EDO, NAG

The Z score for a bond length (or angle) is the number of standard deviations the observed value is removed from the expected value. A bond length (or angle) with $|Z| > 5$ is considered an outlier worth inspection. RMSZ is the root-mean-square of all Z scores of the bond lengths (or angles).

Mol	Chain	Bond lengths		Bond angles	
		RMSZ	$\# Z > 5$	RMSZ	$\# Z > 5$
1	A	0.10	0/3490	0.32	0/4749
1	B	0.10	0/3493	0.31	0/4754
All	All	0.10	0/6983	0.31	0/9503

There are no bond length outliers.

There are no bond angle outliers.

There are no chirality outliers.

There are no planarity outliers.

5.2 Too-close contacts

In the following table, the Non-H and H(model) columns list the number of non-hydrogen atoms and hydrogen atoms in the chain respectively. The H(added) column lists the number of hydrogen atoms added and optimized by MolProbity. The Clashes column lists the number of clashes within the asymmetric unit, whereas Symm-Clashes lists symmetry-related clashes.

Mol	Chain	Non-H	H(model)	H(added)	Clashes	Symm-Clashes
1	A	3407	0	3339	43	0
1	B	3410	0	3341	38	0
2	C	49	0	43	2	0
3	D	28	0	25	0	0
4	A	42	0	39	1	0
4	B	28	0	26	0	0
5	A	4	0	6	0	0
6	B	1	0	0	0	0
All	All	6969	0	6819	80	0

The all-atom clashscore is defined as the number of clashes found per 1000 atoms (including hydrogen atoms). The all-atom clashscore for this structure is 6.

All (80) close contacts within the same asymmetric unit are listed below, sorted by their clash magnitude.

Atom-1	Atom-2	Interatomic distance (Å)	Clash overlap (Å)
1:B:103:GLN:HG3	1:B:118:SER:HB3	1.58	0.84
1:A:39:LEU:HD12	1:A:78:LYS:HE2	1.73	0.71
1:A:293:PRO:HB2	1:A:301:TYR:HB3	1.77	0.67
1:A:243:ILE:HD11	1:A:324:VAL:HG22	1.78	0.64
1:B:40:LEU:HG	1:B:103:GLN:HB3	1.79	0.63
1:B:237:SER:HB2	1:B:269:ILE:HD11	1.83	0.61
1:A:147:ARG:HD2	1:A:207:TRP:NE1	2.18	0.58
1:B:241:PRO:HB3	1:B:267:GLN:HG2	1.84	0.57
1:A:40:LEU:HD23	1:A:56:TYR:HB3	1.86	0.57
1:A:16:MET:HE1	1:A:26:MET:HG2	1.87	0.57
1:A:73:ARG:NH2	1:A:96:ASP:OD1	2.38	0.56
1:A:280:GLN:HG2	1:A:318:ILE:HG23	1.88	0.56
1:B:435:LEU:HD13	1:B:444:LEU:HD13	1.87	0.55
1:B:53:GLN:HB2	1:B:67:ILE:HD12	1.87	0.55
1:A:18:VAL:HG11	1:A:24:VAL:HG22	1.89	0.54
1:B:269:ILE:HG22	1:B:271:ASP:H	1.72	0.54
1:A:253:MET:HE3	1:A:311:LEU:HD11	1.90	0.54
1:A:53:GLN:HB2	1:A:67:ILE:HD11	1.90	0.54
1:B:18:VAL:HG11	1:B:24:VAL:HG22	1.92	0.52
1:B:236:LEU:HD22	1:B:239:ARG:HH21	1.75	0.52
1:A:241:PRO:HG3	1:A:267:GLN:HG2	1.93	0.51
1:A:269:ILE:HG22	1:A:271:ASP:H	1.76	0.51
1:A:55:LEU:HD21	1:A:87:LEU:HD13	1.93	0.51
1:A:103:GLN:HG2	1:A:118:SER:HB3	1.93	0.50
1:A:274:THR:HG22	1:A:290:THR:HB	1.93	0.50
1:A:32:ARG:HD2	1:A:104:LEU:HD11	1.94	0.50
1:B:204:SER:O	1:B:208:MET:HG2	2.12	0.49
1:B:143:ALA:HB1	1:B:232:THR:HG22	1.94	0.49
1:B:16:MET:HE1	1:B:26:MET:HG2	1.95	0.49
1:B:280:GLN:HG2	1:B:318:ILE:HG23	1.93	0.49
1:B:344:TRP:HB3	1:B:440:SER:HB3	1.94	0.49
1:A:212:ARG:NH1	1:A:229:GLU:OE2	2.40	0.49
1:A:187:CYS:SG	1:B:188:GLN:N	2.87	0.48
1:B:41:TRP:HB2	1:B:55:LEU:HG	1.95	0.48
1:B:256:HIS:O	2:C:1:NAG:H82	2.13	0.48
1:A:24:VAL:O	1:A:88:GLN:HA	2.14	0.46
1:A:222:LEU:HD13	1:A:226:ILE:HG13	1.97	0.46
1:A:188:GLN:N	1:B:187:CYS:SG	2.88	0.46
1:A:155:LEU:HD11	1:A:197:VAL:HG13	1.97	0.46
1:A:254:VAL:HG21	1:A:386:TYR:CD2	2.51	0.46

Continued on next page...

Continued from previous page...

Atom-1	Atom-2	Interatomic distance (Å)	Clash overlap (Å)
1:A:40:LEU:HD23	1:A:56:TYR:CB	2.46	0.45
1:A:317:GLY:HA2	1:A:338:VAL:HG12	1.98	0.45
1:B:219:HIS:CG	1:B:220:PRO:HD2	2.52	0.45
1:B:275:PHE:O	1:B:288:SER:HA	2.17	0.45
1:A:41:TRP:HB2	1:A:55:LEU:HG	1.99	0.45
1:A:40:LEU:HD12	1:A:103:GLN:HB2	1.99	0.45
1:A:144:GLY:O	1:A:147:ARG:NH1	2.50	0.45
1:B:423:SER:HB3	1:B:427:HIS:CD2	2.52	0.44
1:B:222:LEU:HD13	1:B:226:ILE:HG13	1.99	0.44
1:A:258:ASN:ND2	4:A:502:NAG:O7	2.50	0.44
1:A:8:ASN:OD1	1:A:118:SER:OG	2.34	0.44
1:B:73:ARG:NH2	1:B:96:ASP:OD2	2.46	0.44
1:B:39:LEU:HD12	1:B:78:LYS:HE2	1.99	0.43
1:B:167:ARG:HB2	1:B:218:THR:OG1	2.18	0.43
1:A:57:TRP:CZ2	1:A:76:ALA:HB1	2.53	0.43
1:B:250:ILE:HA	1:B:253:MET:HE3	2.00	0.43
1:B:113:THR:C	1:B:115:ASP:H	2.26	0.43
1:A:210:ALA:HA	1:A:232:THR:O	2.18	0.43
1:A:184:GLN:HG2	1:A:197:VAL:HB	2.00	0.42
1:A:347:PRO:HD2	1:A:441:LEU:HD11	2.01	0.42
1:B:48:THR:OG1	1:B:49:SER:N	2.52	0.42
1:A:241:PRO:HD2	1:A:326:ASN:O	2.19	0.42
1:B:66:TYR:CZ	1:B:71:PRO:HB3	2.54	0.42
1:B:390:ARG:HD2	1:B:435:LEU:HD11	2.01	0.42
1:A:167:ARG:HB2	1:A:218:THR:OG1	2.19	0.42
1:A:219:HIS:CG	1:A:220:PRO:HD2	2.54	0.42
1:A:18:VAL:HG11	1:A:24:VAL:HG13	2.00	0.42
1:B:219:HIS:CD2	1:B:220:PRO:HD2	2.55	0.42
1:B:351:MET:HE2	1:B:351:MET:HB3	1.91	0.42
1:B:148:GLU:H	1:B:148:GLU:CD	2.28	0.41
1:A:40:LEU:HB2	1:A:103:GLN:HB2	2.01	0.41
1:B:66:TYR:CE1	1:B:71:PRO:HB3	2.56	0.40
1:B:71:PRO:HB2	1:B:74:TYR:O	2.20	0.40
1:B:208:MET:HB3	1:B:238:LEU:HD23	2.03	0.40
2:C:1:NAG:H4	2:C:4:FUC:H5	2.03	0.40
1:A:16:MET:HE1	1:A:26:MET:CG	2.51	0.40
1:B:113:THR:O	1:B:115:ASP:N	2.52	0.40
1:A:148:GLU:CD	1:A:148:GLU:H	2.30	0.40
1:A:48:THR:OG1	1:A:49:SER:N	2.53	0.40
1:B:257:ARG:O	1:B:311:LEU:HG	2.21	0.40

There are no symmetry-related clashes.

5.3 Torsion angles

5.3.1 Protein backbone

In the following table, the Percentiles column shows the percent Ramachandran outliers of the chain as a percentile score with respect to all X-ray entries followed by that with respect to entries of similar resolution.

The Analysed column shows the number of residues for which the backbone conformation was analysed, and the total number of residues.

Mol	Chain	Analysed	Favoured	Allowed	Outliers	Percentiles	
1	A	428/457 (94%)	408 (95%)	19 (4%)	1 (0%)	43	71
1	B	431/457 (94%)	409 (95%)	20 (5%)	2 (0%)	24	53
All	All	859/914 (94%)	817 (95%)	39 (4%)	3 (0%)	36	64

All (3) Ramachandran outliers are listed below:

Mol	Chain	Res	Type
1	A	365	VAL
1	B	298	ASP
1	B	114	THR

5.3.2 Protein sidechains

In the following table, the Percentiles column shows the percent sidechain outliers of the chain as a percentile score with respect to all X-ray entries followed by that with respect to entries of similar resolution.

The Analysed column shows the number of residues for which the sidechain conformation was analysed, and the total number of residues.

Mol	Chain	Analysed	Rotameric	Outliers	Percentiles	
1	A	381/400 (95%)	376 (99%)	5 (1%)	61	85
1	B	382/400 (96%)	375 (98%)	7 (2%)	51	80
All	All	763/800 (95%)	751 (98%)	12 (2%)	55	82

All (12) residues with a non-rotameric sidechain are listed below:

Mol	Chain	Res	Type
1	A	11	PHE
1	A	40	LEU
1	A	149	ASN

Continued on next page...

Continued from previous page...

Mol	Chain	Res	Type
1	A	191	ARG
1	A	257	ARG
1	B	11	PHE
1	B	40	LEU
1	B	113	THR
1	B	116	PHE
1	B	291	LEU
1	B	296	ASN
1	B	300	SER

Sometimes sidechains can be flipped to improve hydrogen bonding and reduce clashes. All (8) such sidechains are listed below:

Mol	Chain	Res	Type
1	A	88	GLN
1	A	188	GLN
1	A	430	HIS
1	B	107	ASN
1	B	171	GLN
1	B	184	GLN
1	B	188	GLN
1	B	418	GLN

5.3.3 RNA ⓘ

There are no RNA molecules in this entry.

5.4 Non-standard residues in protein, DNA, RNA chains ⓘ

There are no non-standard protein/DNA/RNA residues in this entry.

5.5 Carbohydrates ⓘ

6 monosaccharides are modelled in this entry.

In the following table, the Counts columns list the number of bonds (or angles) for which Mogul statistics could be retrieved, the number of bonds (or angles) that are observed in the model and the number of bonds (or angles) that are defined in the Chemical Component Dictionary. The Link column lists molecule types, if any, to which the group is linked. The Z score for a bond length (or angle) is the number of standard deviations the observed value is removed from the

expected value. A bond length (or angle) with $|Z| > 2$ is considered an outlier worth inspection. RMSZ is the root-mean-square of all Z scores of the bond lengths (or angles).

Mol	Type	Chain	Res	Link	Bond lengths			Bond angles		
					Counts	RMSZ	$\# Z > 2$	Counts	RMSZ	$\# Z > 2$
2	NAG	C	1	1,2	14,14,15	0.76	0	17,19,21	1.12	2 (11%)
2	NAG	C	2	2	14,14,15	0.69	0	17,19,21	0.90	0
2	BMA	C	3	2	11,11,12	0.82	0	15,15,17	1.67	1 (6%)
2	FUC	C	4	2	10,10,11	0.79	0	14,14,16	0.92	0
3	NAG	D	1	3,1	14,14,15	0.73	0	17,19,21	1.05	0
3	NAG	D	2	3	14,14,15	0.85	1 (7%)	17,19,21	1.39	2 (11%)

In the following table, the Chirals column lists the number of chiral outliers, the number of chiral centers analysed, the number of these observed in the model and the number defined in the Chemical Component Dictionary. Similar counts are reported in the Torsion and Rings columns. '-' means no outliers of that kind were identified.

Mol	Type	Chain	Res	Link	Chirals	Torsions	Rings
2	NAG	C	1	1,2	-	2/6/23/26	0/1/1/1
2	NAG	C	2	2	-	2/6/23/26	0/1/1/1
2	BMA	C	3	2	-	2/2/19/22	0/1/1/1
2	FUC	C	4	2	-	-	0/1/1/1
3	NAG	D	1	3,1	-	0/6/23/26	0/1/1/1
3	NAG	D	2	3	-	1/6/23/26	0/1/1/1

All (1) bond length outliers are listed below:

Mol	Chain	Res	Type	Atoms	Z	Observed(Å)	Ideal(Å)
3	D	2	NAG	C1-C2	2.00	1.55	1.52

All (5) bond angle outliers are listed below:

Mol	Chain	Res	Type	Atoms	Z	Observed(°)	Ideal(°)
2	C	3	BMA	C1-O5-C5	5.05	118.95	112.19
3	D	2	NAG	C2-N2-C7	3.53	127.64	122.90
2	C	1	NAG	C1-C2-N2	2.67	114.64	110.43
3	D	2	NAG	C4-C3-C2	2.53	114.72	111.02
2	C	1	NAG	O5-C1-C2	-2.49	107.43	111.29

There are no chirality outliers.

All (7) torsion outliers are listed below:

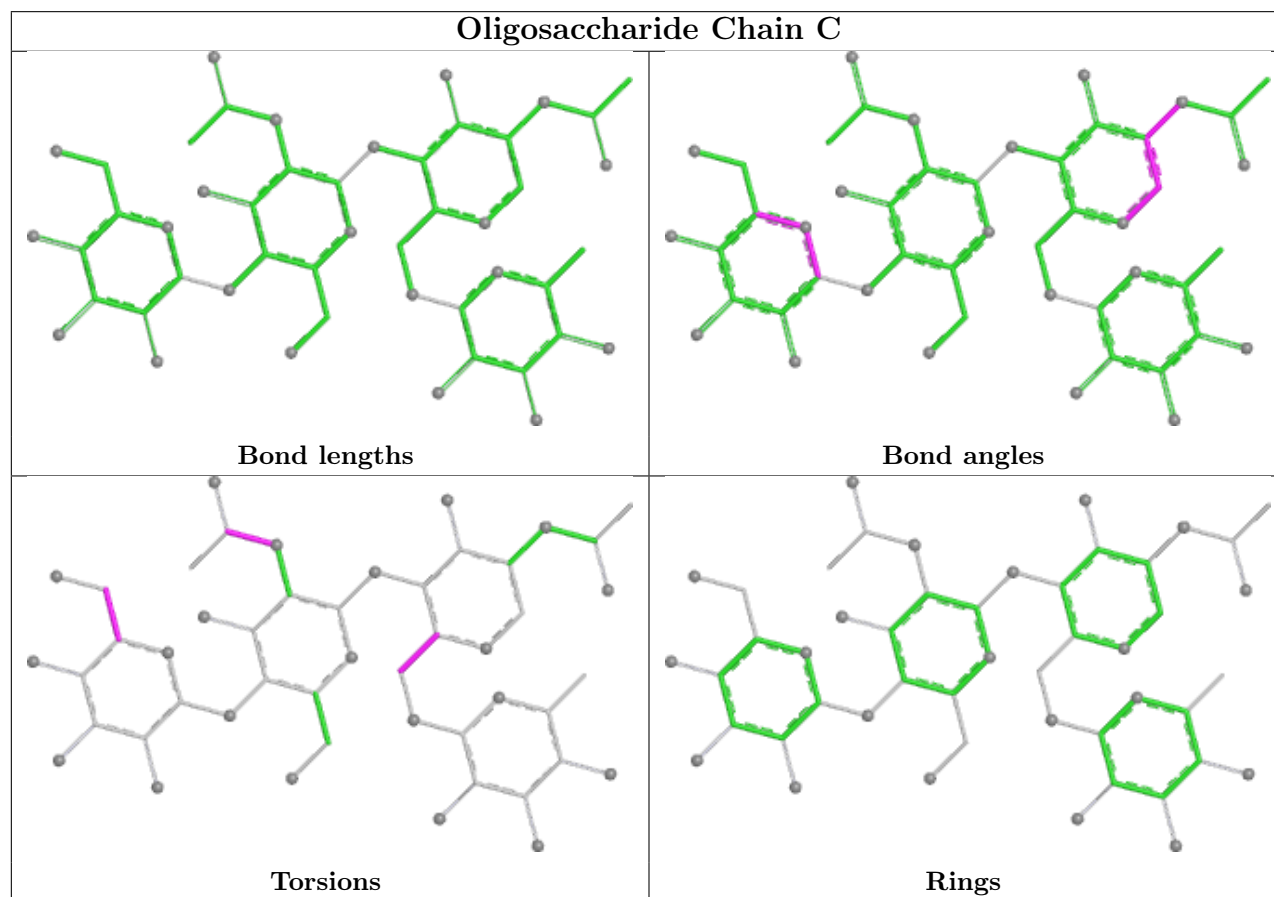
Mol	Chain	Res	Type	Atoms
2	C	1	NAG	C4-C5-C6-O6
2	C	1	NAG	O5-C5-C6-O6
2	C	2	NAG	C8-C7-N2-C2
2	C	2	NAG	O7-C7-N2-C2
2	C	3	BMA	C4-C5-C6-O6
2	C	3	BMA	O5-C5-C6-O6
3	D	2	NAG	C1-C2-N2-C7

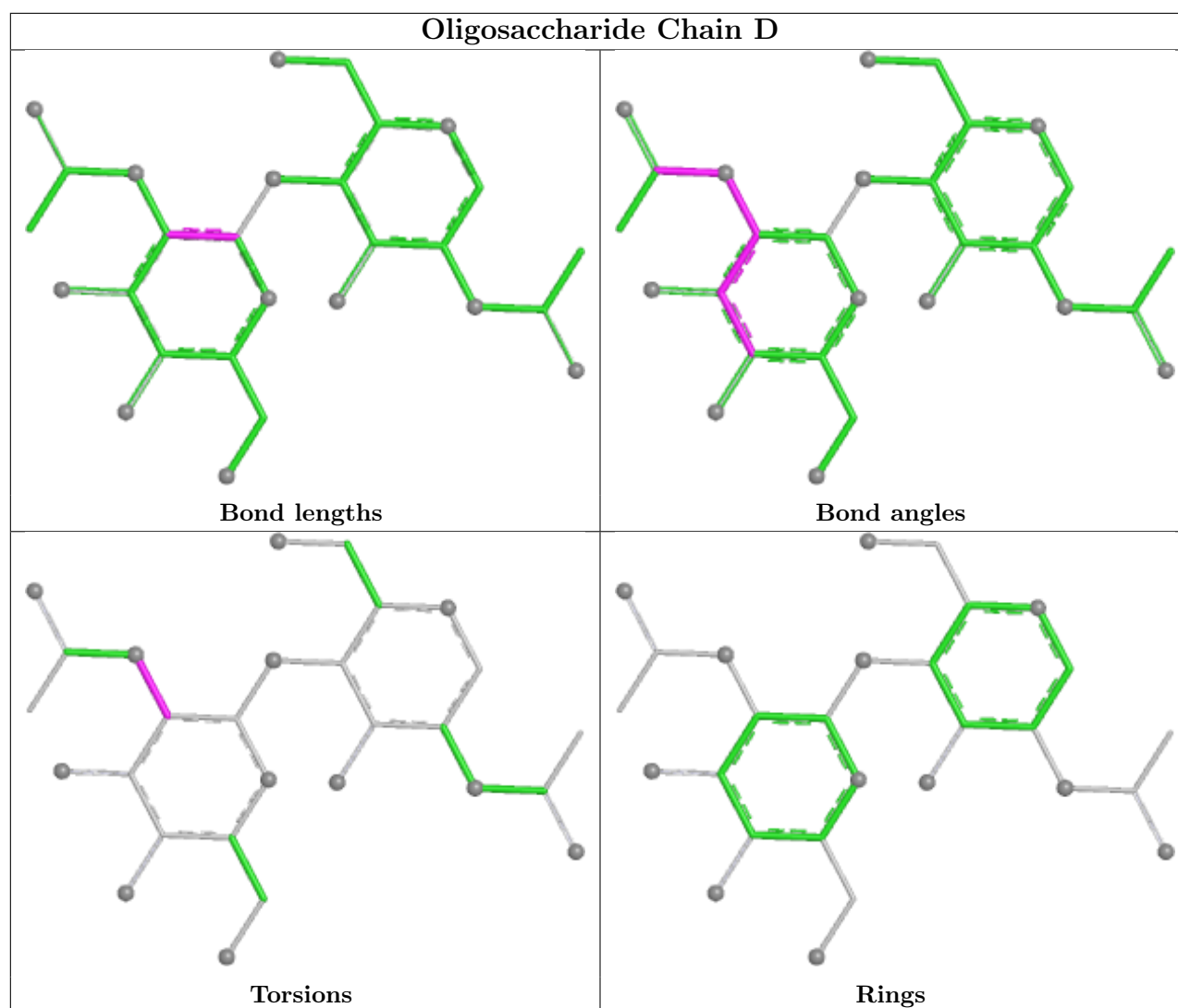
There are no ring outliers.

2 monomers are involved in 2 short contacts:

Mol	Chain	Res	Type	Clashes	Symm-Clashes
2	C	1	NAG	2	0
2	C	4	FUC	1	0

The following is a two-dimensional graphical depiction of Mogul quality analysis of bond lengths, bond angles, torsion angles, and ring geometry for oligosaccharide.





5.6 Ligand geometry [i](#)

6 ligands are modelled in this entry.

In the following table, the Counts columns list the number of bonds (or angles) for which Mogul statistics could be retrieved, the number of bonds (or angles) that are observed in the model and the number of bonds (or angles) that are defined in the Chemical Component Dictionary. The Link column lists molecule types, if any, to which the group is linked. The Z score for a bond length (or angle) is the number of standard deviations the observed value is removed from the expected value. A bond length (or angle) with $|Z| > 2$ is considered an outlier worth inspection. RMSZ is the root-mean-square of all Z scores of the bond lengths (or angles).

Mol	Type	Chain	Res	Link	Bond lengths			Bond angles		
					Counts	RMSZ	$\# Z > 2$	Counts	RMSZ	$\# Z > 2$
4	NAG	A	502	1	14,14,15	0.83	1 (7%)	17,19,21	1.27	2 (11%)
4	NAG	B	502	1	14,14,15	0.71	0	17,19,21	0.87	1 (5%)
4	NAG	A	504	1	14,14,15	0.71	0	17,19,21	0.88	0

Mol	Type	Chain	Res	Link	Bond lengths			Bond angles		
					Counts	RMSZ	# Z > 2	Counts	RMSZ	# Z > 2
4	NAG	B	501	1	14,14,15	0.71	0	17,19,21	1.17	2 (11%)
5	EDO	A	503	-	3,3,3	0.25	0	2,2,2	0.32	0
4	NAG	A	501	1	14,14,15	0.68	0	17,19,21	0.91	1 (5%)

In the following table, the Chirals column lists the number of chiral outliers, the number of chiral centers analysed, the number of these observed in the model and the number defined in the Chemical Component Dictionary. Similar counts are reported in the Torsion and Rings columns. '-' means no outliers of that kind were identified.

Mol	Type	Chain	Res	Link	Chirals	Torsions	Rings
4	NAG	A	502	1	-	2/6/23/26	0/1/1/1
4	NAG	B	502	1	-	0/6/23/26	0/1/1/1
4	NAG	A	504	1	-	4/6/23/26	0/1/1/1
4	NAG	B	501	1	-	3/6/23/26	0/1/1/1
5	EDO	A	503	-	-	0/1/1/1	-
4	NAG	A	501	1	-	0/6/23/26	0/1/1/1

All (1) bond length outliers are listed below:

Mol	Chain	Res	Type	Atoms	Z	Observed(Å)	Ideal(Å)
4	A	502	NAG	C1-C2	2.17	1.55	1.52

All (6) bond angle outliers are listed below:

Mol	Chain	Res	Type	Atoms	Z	Observed(°)	Ideal(°)
4	A	502	NAG	C1-O5-C5	3.55	116.94	112.19
4	B	501	NAG	C1-O5-C5	3.43	116.78	112.19
4	B	501	NAG	C2-N2-C7	2.30	125.98	122.90
4	B	502	NAG	O5-C1-C2	-2.22	107.86	111.29
4	A	501	NAG	O5-C1-C2	-2.09	108.05	111.29
4	A	502	NAG	C2-N2-C7	2.02	125.60	122.90

There are no chirality outliers.

All (9) torsion outliers are listed below:

Mol	Chain	Res	Type	Atoms
4	A	504	NAG	C8-C7-N2-C2
4	A	504	NAG	O7-C7-N2-C2
4	B	501	NAG	C8-C7-N2-C2
4	B	501	NAG	O7-C7-N2-C2

Continued on next page...

Continued from previous page...

Mol	Chain	Res	Type	Atoms
4	A	504	NAG	C4-C5-C6-O6
4	B	501	NAG	O5-C5-C6-O6
4	A	504	NAG	O5-C5-C6-O6
4	A	502	NAG	C3-C2-N2-C7
4	A	502	NAG	C1-C2-N2-C7

There are no ring outliers.

1 monomer is involved in 1 short contact:

Mol	Chain	Res	Type	Clashes	Symm-Clashes
4	A	502	NAG	1	0

5.7 Other polymers [i](#)

There are no such residues in this entry.

5.8 Polymer linkage issues [i](#)

There are no chain breaks in this entry.

6 Fit of model and data ⓘ

6.1 Protein, DNA and RNA chains ⓘ

In the following table, the column labelled ‘#RSRZ > 2’ contains the number (and percentage) of RSRZ outliers, followed by percent RSRZ outliers for the chain as percentile scores relative to all X-ray entries and entries of similar resolution. The OWAB column contains the minimum, median, 95th percentile and maximum values of the occupancy-weighted average B-factor per residue. The column labelled ‘Q < 0.9’ lists the number of (and percentage) of residues with an average occupancy less than 0.9.

Mol	Chain	Analysed	<RSRZ>	#RSRZ>2	OWAB(Å ²)	Q<0.9
1	A	434/457 (94%)	0.42	12 (2%) 55 44	46, 83, 117, 177	0
1	B	435/457 (95%)	0.47	18 (4%) 41 32	46, 81, 130, 159	0
All	All	869/914 (95%)	0.44	30 (3%) 47 37	46, 82, 122, 177	0

All (30) RSRZ outliers are listed below:

Mol	Chain	Res	Type	RSRZ
1	A	356	THR	4.1
1	A	365	VAL	4.1
1	A	108	LEU	3.9
1	B	354	ILE	3.7
1	A	71	PRO	3.4
1	B	116	PHE	3.3
1	B	355	GLY	3.2
1	A	354	ILE	3.2
1	B	396	LEU	3.0
1	B	374	ALA	3.0
1	B	114	THR	2.6
1	B	40	LEU	2.5
1	A	355	GLY	2.5
1	A	269	ILE	2.4
1	B	75	ARG	2.3
1	B	238	LEU	2.3
1	B	187	CYS	2.3
1	B	409	PRO	2.3
1	B	353	VAL	2.3
1	A	187	CYS	2.2
1	B	47	GLY	2.2
1	A	372	THR	2.2
1	B	426	TRP	2.1
1	A	373	LEU	2.1

Continued on next page...

Continued from previous page...

Mol	Chain	Res	Type	RSRZ
1	A	374	ALA	2.1
1	B	410	ASP	2.1
1	B	186	MET	2.1
1	B	371	THR	2.0
1	A	84	VAL	2.0
1	B	5	GLY	2.0

6.2 Non-standard residues in protein, DNA, RNA chains [i](#)

There are no non-standard protein/DNA/RNA residues in this entry.

6.3 Carbohydrates [i](#)

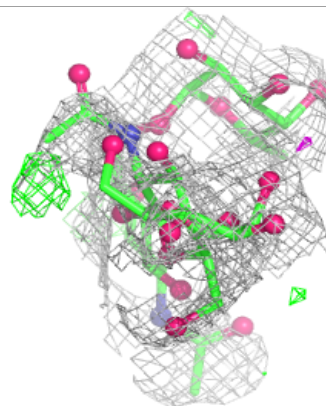
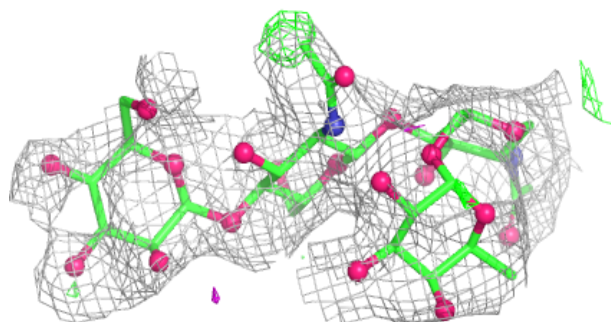
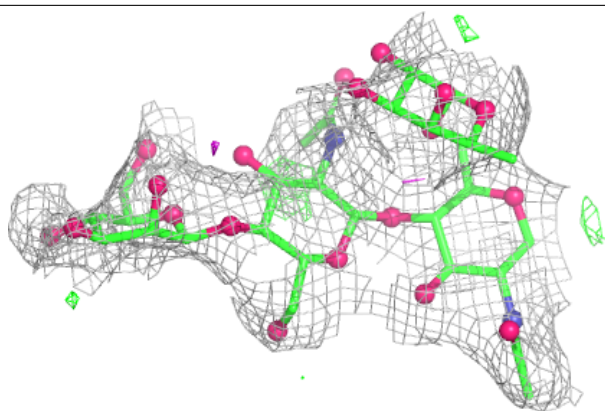
In the following table, the Atoms column lists the number of modelled atoms in the group and the number defined in the chemical component dictionary. The B-factors column lists the minimum, median, 95th percentile and maximum values of B factors of atoms in the group. The column labelled 'Q < 0.9' lists the number of atoms with occupancy less than 0.9.

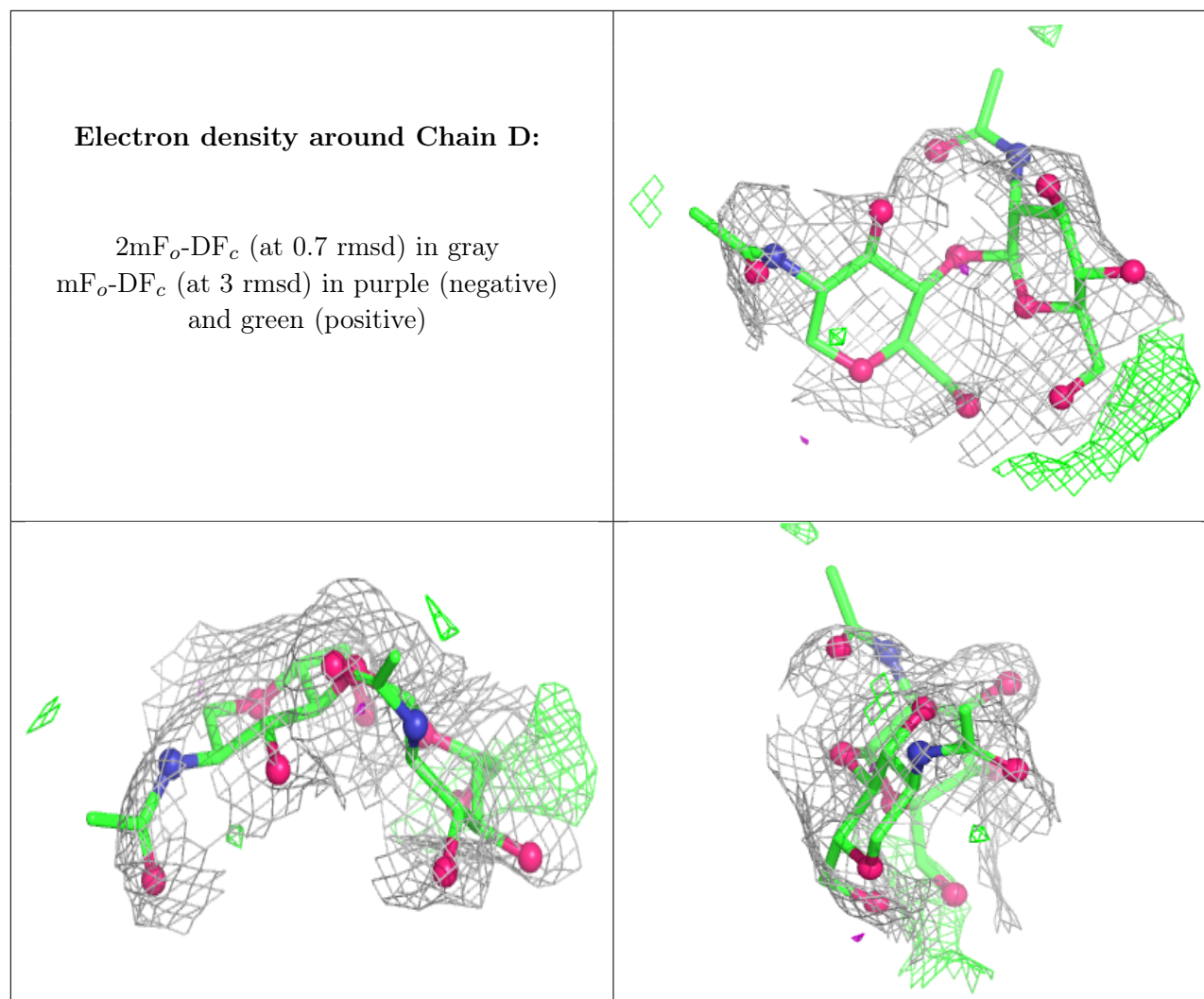
Mol	Type	Chain	Res	Atoms	RSCC	RSR	B-factors(\AA^2)	Q<0.9
2	BMA	C	3	11/12	0.20	0.16	137,156,164,164	0
3	NAG	D	2	14/15	0.39	0.16	139,159,167,168	0
2	NAG	C	2	14/15	0.42	0.16	128,152,164,165	0
2	FUC	C	4	10/11	0.69	0.15	125,144,154,157	0
3	NAG	D	1	14/15	0.70	0.13	117,137,152,163	0
2	NAG	C	1	14/15	0.74	0.13	91,130,153,157	0

The following is a graphical depiction of the model fit to experimental electron density for oligosaccharide. Each fit is shown from different orientation to approximate a three-dimensional view.

Electron density around Chain C:

$2mF_o-DF_c$ (at 0.7 rmsd) in gray
 mF_o-DF_c (at 3 rmsd) in purple (negative)
and green (positive)





6.4 Ligands ⓘ

In the following table, the Atoms column lists the number of modelled atoms in the group and the number defined in the chemical component dictionary. The B-factors column lists the minimum, median, 95th percentile and maximum values of B factors of atoms in the group. The column labelled 'Q< 0.9' lists the number of atoms with occupancy less than 0.9.

Mol	Type	Chain	Res	Atoms	RSCC	RSR	B-factors(\AA^2)	Q<0.9
4	NAG	A	504	14/15	0.28	0.17	102,135,146,151	0
4	NAG	B	502	14/15	0.47	0.13	131,154,163,166	0
4	NAG	A	501	14/15	0.51	0.19	111,132,138,141	0
4	NAG	B	501	14/15	0.54	0.13	97,120,147,153	0
4	NAG	A	502	14/15	0.55	0.14	109,131,137,141	0
5	EDO	A	503	4/4	0.86	0.23	74,74,80,84	0

6.5 Other polymers [i](#)

There are no such residues in this entry.