



# Full wwPDB X-ray Structure Validation Report ⓘ

Mar 17, 2026 – 09:31 PM UTC

PDB ID : 9DHG / pdb\_00009dhg  
Title : DHODH in complex with Compound 5  
Authors : Shaffer, P.L.  
Deposited on : 2024-09-03  
Resolution : 1.39 Å(reported)

This is a Full wwPDB X-ray Structure Validation Report for a publicly released PDB entry.

We welcome your comments at [validation@mail.wwpdb.org](mailto:validation@mail.wwpdb.org)

A user guide is available at

<https://www.wwpdb.org/validation/2017/XrayValidationReportHelp>

with specific help available everywhere you see the ⓘ symbol.

The types of validation reports are described at

<http://www.wwpdb.org/validation/2017/FAQs#types>.

---

The following versions of software and data (see [references ⓘ](#)) were used in the production of this report:

MolProbity : 4-5-2 with Phenix2.0  
Mogul : 2022.3.0, CSD as543be (2022)  
Xtriage (Phenix) : 2.0  
EDS : 3.0  
Buster-report : wwPDB partial adaption of 1.1.7 (2018)  
Percentile statistics : 20250101.v01 (using entries in the PDB archive January 1st 2025)  
CCP4 : 9.0.010 (Gargrove)  
Density-Fitness : 1.0.12  
Ideal geometry (proteins) : Engh & Huber (2001)  
Ideal geometry (DNA, RNA) : Parkinson et al. (1996)  
Validation Pipeline (wwPDB-VP) : 2.49

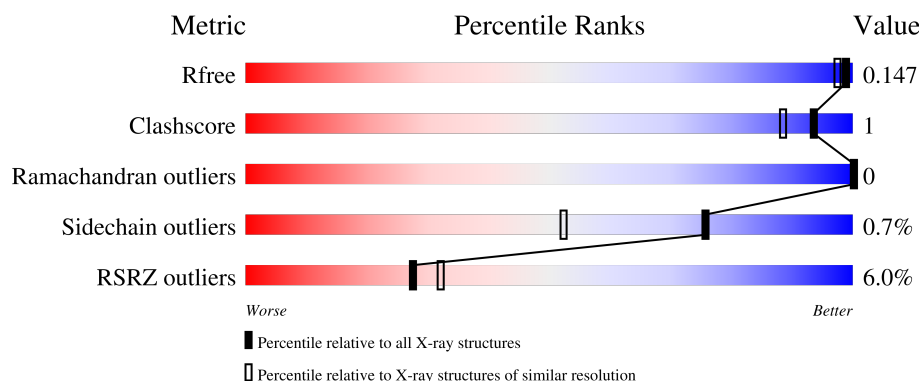
# 1 Overall quality at a glance

The following experimental techniques were used to determine the structure:

## *X-RAY DIFFRACTION*

The reported resolution of this entry is 1.39 Å.

Percentile scores (ranging between 0-100) for global validation metrics of the entry are shown in the following graphic. The table shows the number of entries on which the scores are based.



Metric	Whole archive (#Entries)	Similar resolution (#Entries, resolution range(Å))
$R_{free}$	180053	4403 (1.40-1.36)
Clashscore	190562	4528 (1.40-1.36)
Ramachandran outliers	187476	4459 (1.40-1.36)
Sidechain outliers	187428	4458 (1.40-1.36)
RSRZ outliers	180081	4399 (1.40-1.36)

The table below summarises the geometric issues observed across the polymeric chains and their fit to the electron density. The red, orange, yellow and green segments of the lower bar indicate the fraction of residues that contain outliers for  $\geq 3$ , 2, 1 and 0 types of geometric quality criteria respectively. A grey segment represents the fraction of residues that are not modelled. The numeric value for each fraction is indicated below the corresponding segment, with a dot representing fractions  $\leq 5\%$ . The upper red bar (where present) indicates the fraction of residues that have poor fit to the electron density. The numeric value is given above the bar.

Mol	Chain	Length	Quality of chain
1	A	369	<div> <div>6%</div> <div>94%</div> <div>5%</div> </div>

The following table lists non-polymeric compounds, carbohydrate monomers and non-standard residues in protein, DNA, RNA chains that are outliers for geometric or electron-density-fit criteria:

Mol	Type	Chain	Res	Chirality	Geometry	Clashes	Electron density
3	ORO	A	402	-	X	-	-

*Continued on next page...*

*Continued from previous page...*

Mol	Type	Chain	Res	Chirality	Geometry	Clashes	Electron density
7	CL	A	414	-	-	X	-

## 2 Entry composition [i](#)

There are 11 unique types of molecules in this entry. The entry contains 3467 atoms, of which 0 are hydrogens and 0 are deuteriums.

In the tables below, the ZeroOcc column contains the number of atoms modelled with zero occupancy, the AltConf column contains the number of residues with at least one atom in alternate conformation and the Trace column contains the number of residues modelled with at most 2 atoms.

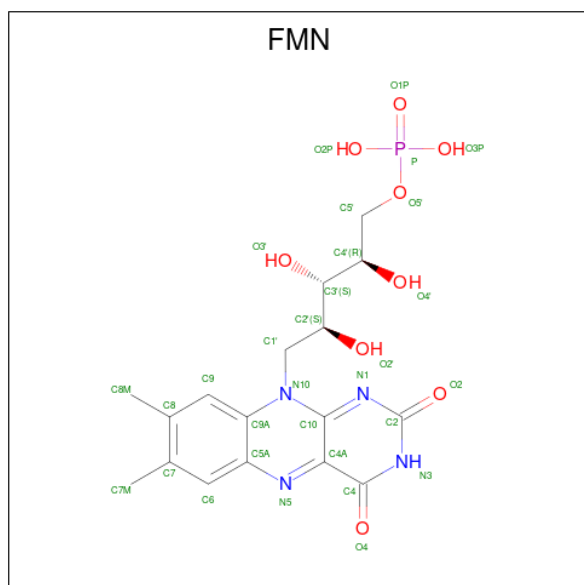
- Molecule 1 is a protein called Dihydroorotate dehydrogenase (quinone), mitochondrial.

Mol	Chain	Residues	Atoms					ZeroOcc	AltConf	Trace
1	A	366	Total	C	N	O	S	27	24	0
			3012	1884	565	558	5			

There are 2 discrepancies between the modelled and reference sequences:

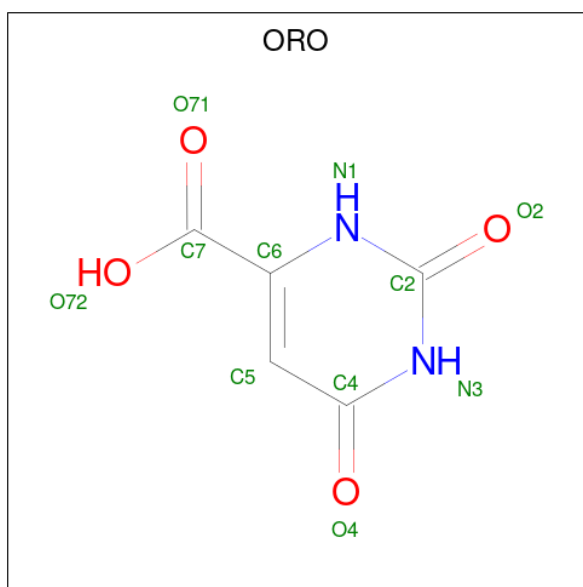
Chain	Residue	Modelled	Actual	Comment	Reference
A	28	GLY	-	expression tag	UNP Q02127
A	29	ALA	-	expression tag	UNP Q02127

- Molecule 2 is FLAVIN MONONUCLEOTIDE (CCD ID: FMN) (formula:  $C_{17}H_{21}N_4O_9P$ ).



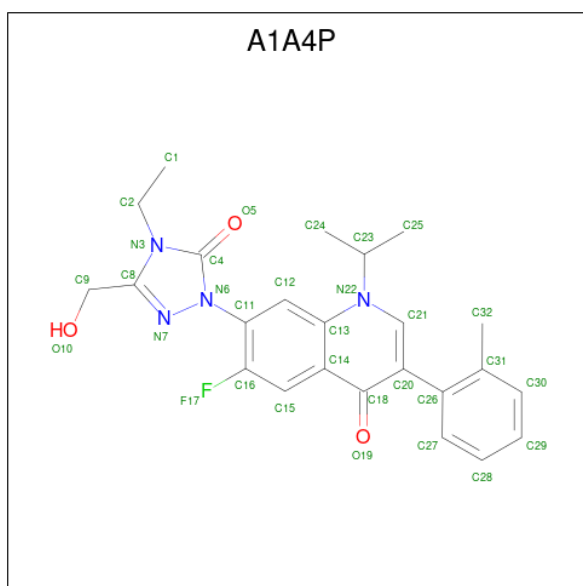
Mol	Chain	Residues	Atoms					ZeroOcc	AltConf
2	A	1	Total	C	N	O	P	0	0
			31	17	4	9	1		

- Molecule 3 is OROTIC ACID (CCD ID: ORO) (formula:  $C_5H_4N_2O_4$ ).



Mol	Chain	Residues	Atoms				ZeroOcc	AltConf
3	A	1	Total	C	N	O	0	0
			11	5	2	4		

- Molecule 4 is (3P,7P)-7-[4-ethyl-3-(hydroxymethyl)-5-oxo-4,5-dihydro-1H-1,2,4-triazol-1-yl]-6-fluoro-3-(2-methylphenyl)-1-(propan-2-yl)quinolin-4(1H)-one (CCD ID: A1A4P) (formula:  $C_{24}H_{25}FN_4O_3$ ) (labeled as "Ligand of Interest" by depositor).



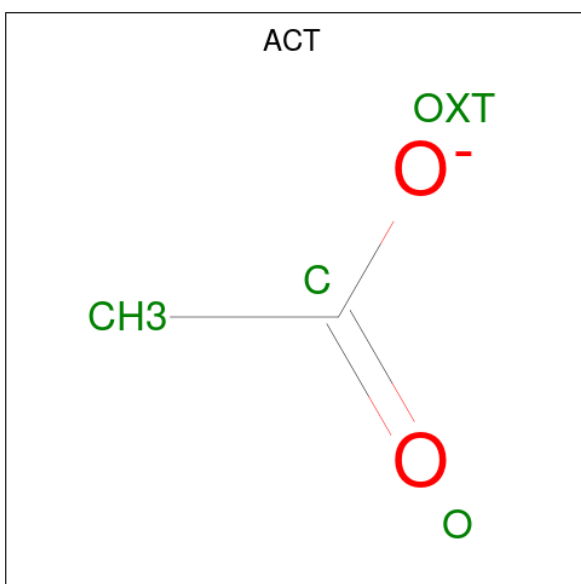
Mol	Chain	Residues	Atoms				ZeroOcc	AltConf
4	A	1	Total	C	F	N	O	0
			32	24	1	4	3	

- Molecule 5 is SULFATE ION (CCD ID: SO4) (formula:  $O_4S$ ).



Mol	Chain	Residues	Atoms			ZeroOcc	AltConf
5	A	1	Total	O	S	0	0
			5	4	1		
5	A	1	Total	O	S	0	0
			5	4	1		
5	A	1	Total	O	S	0	0
			5	4	1		
5	A	1	Total	O	S	0	0
			5	4	1		
5	A	1	Total	O	S	0	0
			5	4	1		

- Molecule 6 is ACETATE ION (CCD ID: ACT) (formula: C<sub>2</sub>H<sub>3</sub>O<sub>2</sub>).

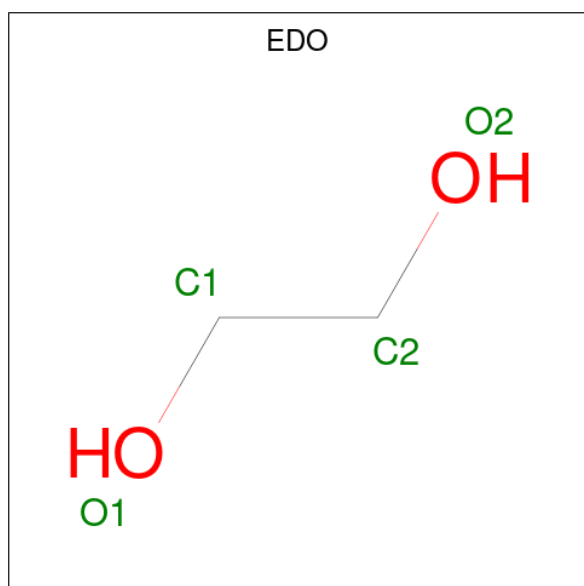


Mol	Chain	Residues	Atoms			ZeroOcc	AltConf
6	A	1	Total	C	O	0	0
			4	2	2		
6	A	1	Total	C	O	0	0
			4	2	2		

- Molecule 7 is CHLORIDE ION (CCD ID: CL) (formula: Cl).

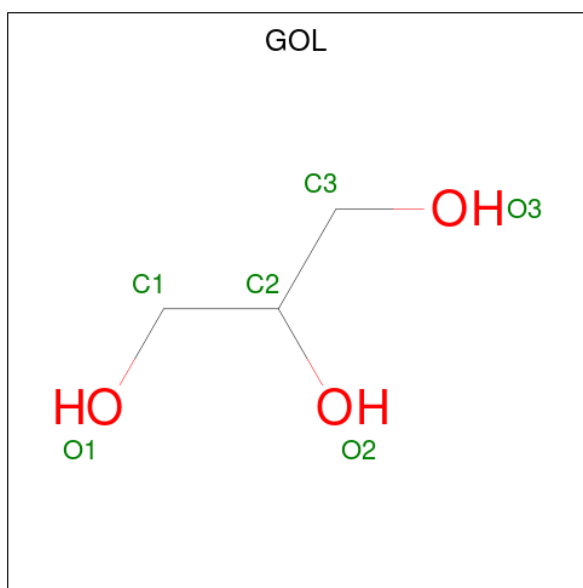
Mol	Chain	Residues	Atoms		ZeroOcc	AltConf
7	A	10	Total	Cl	0	0
			10	10		

- Molecule 8 is 1,2-ETHANEDIOL (CCD ID: EDO) (formula: C<sub>2</sub>H<sub>6</sub>O<sub>2</sub>).



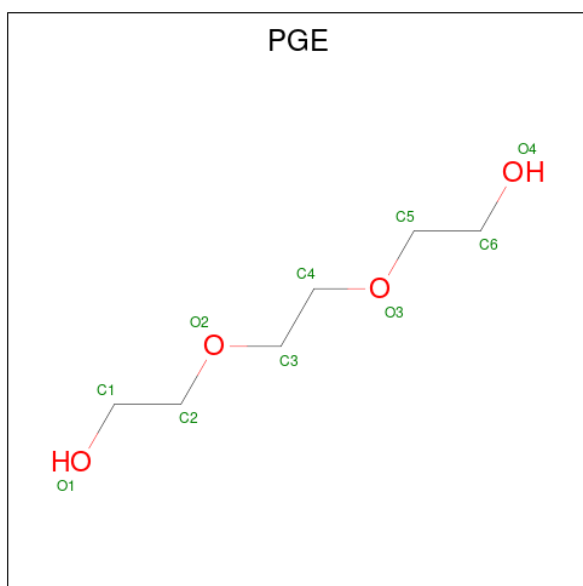
Mol	Chain	Residues	Atoms			ZeroOcc	AltConf
8	A	1	Total	C	O	0	0
			4	2	2		
8	A	1	Total	C	O	0	0
			4	2	2		
8	A	1	Total	C	O	0	0
			4	2	2		
8	A	1	Total	C	O	0	0
			4	2	2		
8	A	1	Total	C	O	0	0
			4	2	2		
8	A	1	Total	C	O	0	0
			4	2	2		

- Molecule 9 is GLYCEROL (CCD ID: GOL) (formula:  $C_3H_8O_3$ ).



Mol	Chain	Residues	Atoms			ZeroOcc	AltConf
9	A	1	Total	C	O	0	0
			6	3	3		
9	A	1	Total	C	O	0	0
			6	3	3		

- Molecule 10 is TRIETHYLENE GLYCOL (CCD ID: PGE) (formula:  $C_6H_{14}O_4$ ).



Mol	Chain	Residues	Atoms			ZeroOcc	AltConf
10	A	1	Total	C	O	0	0
			10	6	4		

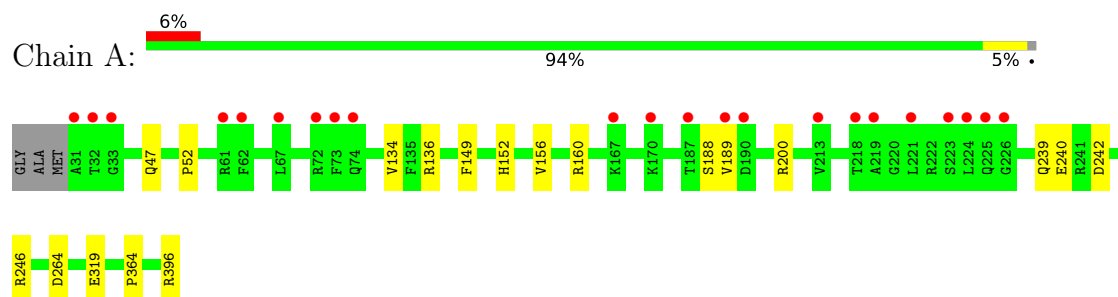
- Molecule 11 is water.

Mol	Chain	Residues	Atoms		ZeroOcc	AltConf
11	A	291	Total 292	O 292	0	1

### 3 Residue-property plots

These plots are drawn for all protein, RNA, DNA and oligosaccharide chains in the entry. The first graphic for a chain summarises the proportions of the various outlier classes displayed in the second graphic. The second graphic shows the sequence view annotated by issues in geometry and electron density. Residues are color-coded according to the number of geometric quality criteria for which they contain at least one outlier: green = 0, yellow = 1, orange = 2 and red = 3 or more. A red dot above a residue indicates a poor fit to the electron density ( $RSRZ > 2$ ). Stretches of 2 or more consecutive residues without any outlier are shown as a green connector. Residues present in the sample, but not in the model, are shown in grey.

- Molecule 1: Dihydroorotate dehydrogenase (quinone), mitochondrial



## 4 Data and refinement statistics

Property	Value	Source
Space group	P 32 2 1	Depositor
Cell constants a, b, c, $\alpha$ , $\beta$ , $\gamma$	90.81Å 90.81Å 122.86Å 90.00° 90.00° 120.00°	Depositor
Resolution (Å)	78.65 – 1.39 78.65 – 1.39	Depositor EDS
% Data completeness (in resolution range)	100.0 (78.65-1.39) 100.0 (78.65-1.39)	Depositor EDS
$R_{merge}$	0.10	Depositor
$R_{sym}$	(Not available)	Depositor
$\langle I/\sigma(I) \rangle$ <sup>1</sup>	1.62 (at 1.38Å)	Xtriage
Refinement program	REFMAC 5.8.0258	Depositor
R, $R_{free}$	0.117 , 0.139 0.126 , 0.147	Depositor DCC
$R_{free}$ test set	5727 reflections (4.81%)	wwPDB-VP
Wilson B-factor (Å <sup>2</sup> )	18.3	Xtriage
Anisotropy	0.230	Xtriage
Bulk solvent $k_{sol}$ (e/Å <sup>3</sup> ), $B_{sol}$ (Å <sup>2</sup> )	0.37 , 59.6	EDS
L-test for twinning <sup>2</sup>	$\langle  L  \rangle = 0.50$ , $\langle L^2 \rangle = 0.33$	Xtriage
Estimated twinning fraction	0.021 for -h,-k,l	Xtriage
$F_o, F_c$ correlation	0.98	EDS
Total number of atoms	3467	wwPDB-VP
Average B, all atoms (Å <sup>2</sup> )	27.0	wwPDB-VP

Xtriage's analysis on translational NCS is as follows: *The largest off-origin peak in the Patterson function is 4.27% of the height of the origin peak. No significant pseudotranslation is detected.*

<sup>1</sup>Intensities estimated from amplitudes.

<sup>2</sup>Theoretical values of  $\langle |L| \rangle$ ,  $\langle L^2 \rangle$  for acentric reflections are 0.5, 0.333 respectively for untwinned datasets, and 0.375, 0.2 for perfectly twinned datasets.

## 5 Model quality [i](#)

### 5.1 Standard geometry [i](#)

Bond lengths and bond angles in the following residue types are not validated in this section: PGE, EDO, ACT, FMN, ORO, SO4, A1A4P, GOL, CL

The Z score for a bond length (or angle) is the number of standard deviations the observed value is removed from the expected value. A bond length (or angle) with  $|Z| > 5$  is considered an outlier worth inspection. RMSZ is the root-mean-square of all Z scores of the bond lengths (or angles).

Mol	Chain	Bond lengths		Bond angles	
		RMSZ	$\# Z  > 5$	RMSZ	$\# Z  > 5$
1	A	0.90	1/3059 (0.0%)	1.07	4/4125 (0.1%)

All (1) bond length outliers are listed below:

Mol	Chain	Res	Type	Atoms	Z	Observed(Å)	Ideal(Å)
1	A	396	ARG	NE-CZ	6.84	1.40	1.33

All (4) bond angle outliers are listed below:

Mol	Chain	Res	Type	Atoms	Z	Observed(°)	Ideal(°)
1	A	264	ASP	CA-CB-CG	7.49	120.08	112.60
1	A	149	PHE	CA-CB-CG	5.73	119.53	113.80
1	A	189	VAL	O-C-N	5.39	127.37	122.14
1	A	364	PRO	N-CA-C	5.09	116.91	110.70

There are no chirality outliers.

There are no planarity outliers.

### 5.2 Too-close contacts [i](#)

In the following table, the Non-H and H(model) columns list the number of non-hydrogen atoms and hydrogen atoms in the chain respectively. The H(added) column lists the number of hydrogen atoms added and optimized by MolProbity. The Clashes column lists the number of clashes within the asymmetric unit, whereas Symm-Clashes lists symmetry-related clashes.

Mol	Chain	Non-H	H(model)	H(added)	Clashes	Symm-Clashes
1	A	3012	0	3075	9	1
2	A	31	0	19	0	0
3	A	11	0	3	0	0

*Continued on next page...*

Continued from previous page...

Mol	Chain	Non-H	H(model)	H(added)	Clashes	Symm-Clashes
4	A	32	0	0	0	0
5	A	25	0	0	0	0
6	A	8	0	6	0	0
7	A	10	0	0	3	0
8	A	24	0	36	1	0
9	A	12	0	16	0	0
10	A	10	0	14	0	0
11	A	292	0	0	2	1
All	All	3467	0	3169	9	1

The all-atom clashscore is defined as the number of clashes found per 1000 atoms (including hydrogen atoms). The all-atom clashscore for this structure is 1.

All (9) close contacts within the same asymmetric unit are listed below, sorted by their clash magnitude.

Atom-1	Atom-2	Interatomic distance (Å)	Clash overlap (Å)
1:A:239[B]:GLN:HG3	11:A:642:HOH:O	1.95	0.66
1:A:136[B]:ARG:HD3	11:A:738:HOH:O	2.01	0.60
1:A:52:PRO:HB2	1:A:134[A]:VAL:HG13	1.86	0.56
1:A:200:ARG:NH1	1:A:240:GLU:OE2	2.43	0.51
1:A:47:GLN:OE1	1:A:136[B]:ARG:NH2	2.39	0.50
1:A:160[B]:ARG:HD3	8:A:424:EDO:O2	2.14	0.47
1:A:242:ASP:OD2	7:A:415:CL:CL	2.69	0.47
1:A:152:HIS:O	7:A:414:CL:CL	2.73	0.43
1:A:156:VAL:HG23	7:A:414:CL:CL	2.57	0.42

All (1) symmetry-related close contacts are listed below. The label for Atom-2 includes the symmetry operator and encoded unit-cell translations to be applied.

Atom-1	Atom-2	Interatomic distance (Å)	Clash overlap (Å)
1:A:319[A]:GLU:OE1	11:A:619:HOH:O[4_555]	2.19	0.01

## 5.3 Torsion angles [i](#)

### 5.3.1 Protein backbone [i](#)

In the following table, the Percentiles column shows the percent Ramachandran outliers of the chain as a percentile score with respect to all X-ray entries followed by that with respect to entries of similar resolution.

The Analysed column shows the number of residues for which the backbone conformation was analysed, and the total number of residues.

Mol	Chain	Analysed	Favoured	Allowed	Outliers	Percentiles	
1	A	389/369 (105%)	379 (97%)	10 (3%)	0	100	100

There are no Ramachandran outliers to report.

### 5.3.2 Protein sidechains ⓘ

In the following table, the Percentiles column shows the percent sidechain outliers of the chain as a percentile score with respect to all X-ray entries followed by that with respect to entries of similar resolution.

The Analysed column shows the number of residues for which the sidechain conformation was analysed, and the total number of residues.

Mol	Chain	Analysed	Rotameric	Outliers	Percentiles	
1	A	320/296 (108%)	318 (99%)	2 (1%)	78	56

All (2) residues with a non-rotameric sidechain are listed below:

Mol	Chain	Res	Type
1	A	188	SER
1	A	246	ARG

Sometimes sidechains can be flipped to improve hydrogen bonding and reduce clashes. All (1) such sidechains are listed below:

Mol	Chain	Res	Type
1	A	294	GLN

### 5.3.3 RNA ⓘ

There are no RNA molecules in this entry.

## 5.4 Non-standard residues in protein, DNA, RNA chains ⓘ

There are no non-standard protein/DNA/RNA residues in this entry.

## 5.5 Carbohydrates [i](#)

There are no oligosaccharides in this entry.

## 5.6 Ligand geometry [i](#)

Of 29 ligands modelled in this entry, 10 are monoatomic - leaving 19 for Mogul analysis.

In the following table, the Counts columns list the number of bonds (or angles) for which Mogul statistics could be retrieved, the number of bonds (or angles) that are observed in the model and the number of bonds (or angles) that are defined in the Chemical Component Dictionary. The Link column lists molecule types, if any, to which the group is linked. The Z score for a bond length (or angle) is the number of standard deviations the observed value is removed from the expected value. A bond length (or angle) with  $|Z| > 2$  is considered an outlier worth inspection. RMSZ is the root-mean-square of all Z scores of the bond lengths (or angles).

Mol	Type	Chain	Res	Link	Bond lengths			Bond angles		
					Counts	RMSZ	# Z  > 2	Counts	RMSZ	# Z  > 2
9	GOL	A	429	-	5,5,5	0.18	0	5,5,5	0.48	0
8	EDO	A	420	-	3,3,3	0.34	0	2,2,2	0.36	0
6	ACT	A	425	-	3,3,3	0.72	0	3,3,3	0.70	0
4	A1A4P	A	403	-	34,35,35	0.95	1 (2%)	43,52,52	1.61	9 (20%)
9	GOL	A	423	-	5,5,5	0.26	0	5,5,5	0.78	0
8	EDO	A	422	-	3,3,3	0.15	0	2,2,2	0.35	0
8	EDO	A	424	-	3,3,3	0.17	0	2,2,2	0.08	0
6	ACT	A	406	-	3,3,3	1.19	0	3,3,3	0.88	0
8	EDO	A	427	-	3,3,3	0.18	0	2,2,2	0.20	0
5	SO4	A	405	-	4,4,4	0.33	0	6,6,6	0.11	0
3	ORO	A	402	-	11,11,11	1.84	5 (45%)	14,15,15	2.36	4 (28%)
2	FMN	A	401	-	33,33,33	0.65	0	48,50,50	0.73	0
5	SO4	A	418	-	4,4,4	0.30	0	6,6,6	0.09	0
8	EDO	A	421	-	3,3,3	0.06	0	2,2,2	0.28	0
8	EDO	A	428	-	3,3,3	0.15	0	2,2,2	0.30	0
10	PGE	A	426	-	9,9,9	0.17	0	8,8,8	0.34	0
5	SO4	A	413	-	4,4,4	0.32	0	6,6,6	0.16	0
5	SO4	A	404	-	4,4,4	0.37	0	6,6,6	0.24	0
5	SO4	A	419	-	4,4,4	0.27	0	6,6,6	0.40	0

In the following table, the Chirals column lists the number of chiral outliers, the number of chiral centers analysed, the number of these observed in the model and the number defined in the Chemical Component Dictionary. Similar counts are reported in the Torsion and Rings columns. '-' means no outliers of that kind were identified.

Mol	Type	Chain	Res	Link	Chirals	Torsions	Rings
3	ORO	A	402	-	-	4/4/4/4	0/1/1/1
8	EDO	A	424	-	-	1/1/1/1	-
9	GOL	A	429	-	-	1/4/4/4	-
10	PGE	A	426	-	-	1/7/7/7	-
2	FMN	A	401	-	-	5/18/18/18	0/3/3/3
9	GOL	A	423	-	-	2/4/4/4	-
8	EDO	A	420	-	-	1/1/1/1	-
8	EDO	A	427	-	-	0/1/1/1	-
8	EDO	A	421	-	-	0/1/1/1	-
4	A1A4P	A	403	-	-	0/16/16/16	0/4/4/4
8	EDO	A	428	-	-	0/1/1/1	-
8	EDO	A	422	-	-	0/1/1/1	-

All (6) bond length outliers are listed below:

Mol	Chain	Res	Type	Atoms	Z	Observed(Å)	Ideal(Å)
4	A	403	A1A4P	C11-N6	-3.36	1.38	1.43
3	A	402	ORO	C4-N3	-2.94	1.33	1.38
3	A	402	ORO	C6-N1	-2.48	1.33	1.38
3	A	402	ORO	C2-N3	-2.45	1.33	1.37
3	A	402	ORO	C2-N1	-2.45	1.33	1.37
3	A	402	ORO	O72-C7	-2.29	1.24	1.30

All (13) bond angle outliers are listed below:

Mol	Chain	Res	Type	Atoms	Z	Observed(°)	Ideal(°)
3	A	402	ORO	C4-N3-C2	-5.02	120.69	125.55
4	A	403	A1A4P	C4-N6-N7	-4.62	108.45	112.06
3	A	402	ORO	O4-C4-C5	-3.74	120.30	125.46
3	A	402	ORO	C5-C4-N3	3.56	119.67	115.24
3	A	402	ORO	N3-C2-N1	3.45	121.16	115.74
4	A	403	A1A4P	C25-C23-N22	2.91	115.07	110.27
4	A	403	A1A4P	C20-C21-N22	2.88	127.87	124.42
4	A	403	A1A4P	C21-C20-C18	-2.84	117.30	120.46
4	A	403	A1A4P	C13-C14-C18	2.55	123.81	121.38
4	A	403	A1A4P	C24-C23-N22	-2.53	106.09	110.27
4	A	403	A1A4P	C31-C26-C20	-2.38	119.10	121.63
4	A	403	A1A4P	C12-C11-C16	2.01	118.63	116.53
4	A	403	A1A4P	C8-N7-N6	2.00	106.50	103.61

There are no chirality outliers.

All (15) torsion outliers are listed below:

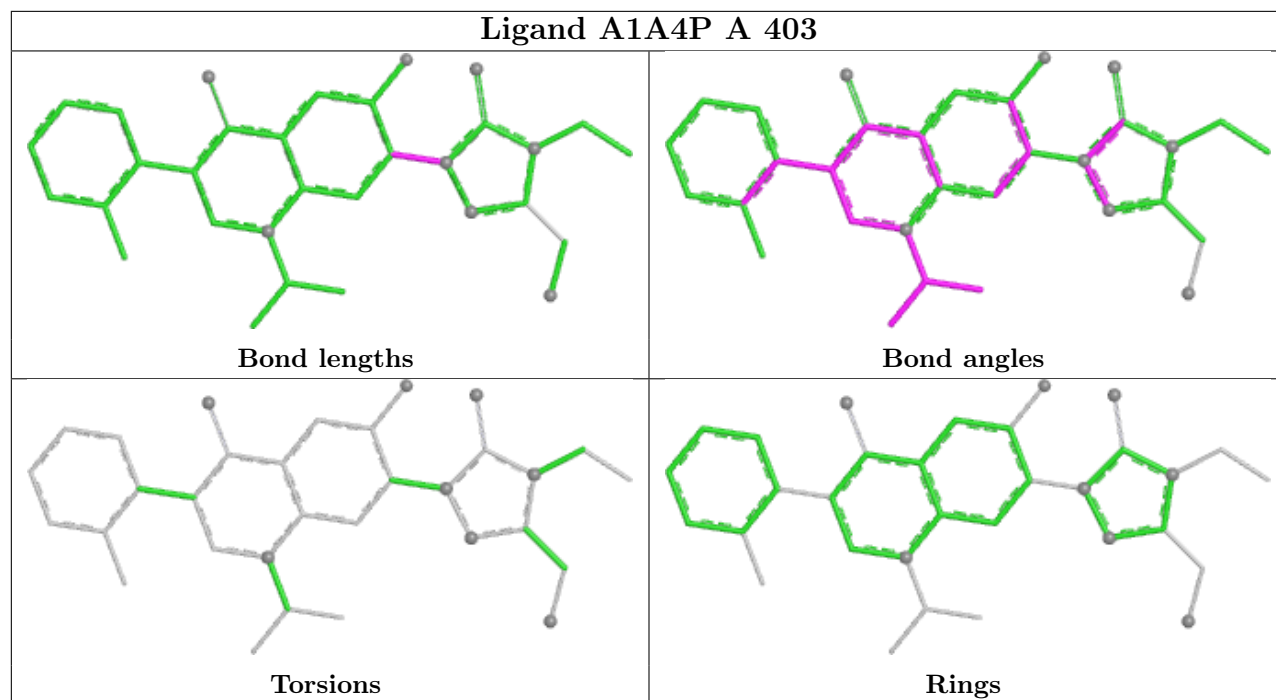
Mol	Chain	Res	Type	Atoms
3	A	402	ORO	N1-C6-C7-O71
3	A	402	ORO	N1-C6-C7-O72
9	A	423	GOL	C1-C2-C3-O3
9	A	423	GOL	O2-C2-C3-O3
2	A	401	FMN	C2'-C3'-C4'-O4'
3	A	402	ORO	C5-C6-C7-O71
3	A	402	ORO	C5-C6-C7-O72
9	A	429	GOL	O2-C2-C3-O3
2	A	401	FMN	O3'-C3'-C4'-O4'
2	A	401	FMN	C4'-C5'-O5'-P
2	A	401	FMN	O3'-C3'-C4'-C5'
8	A	420	EDO	O1-C1-C2-O2
8	A	424	EDO	O1-C1-C2-O2
2	A	401	FMN	C2'-C3'-C4'-C5'
10	A	426	PGE	O2-C3-C4-O3

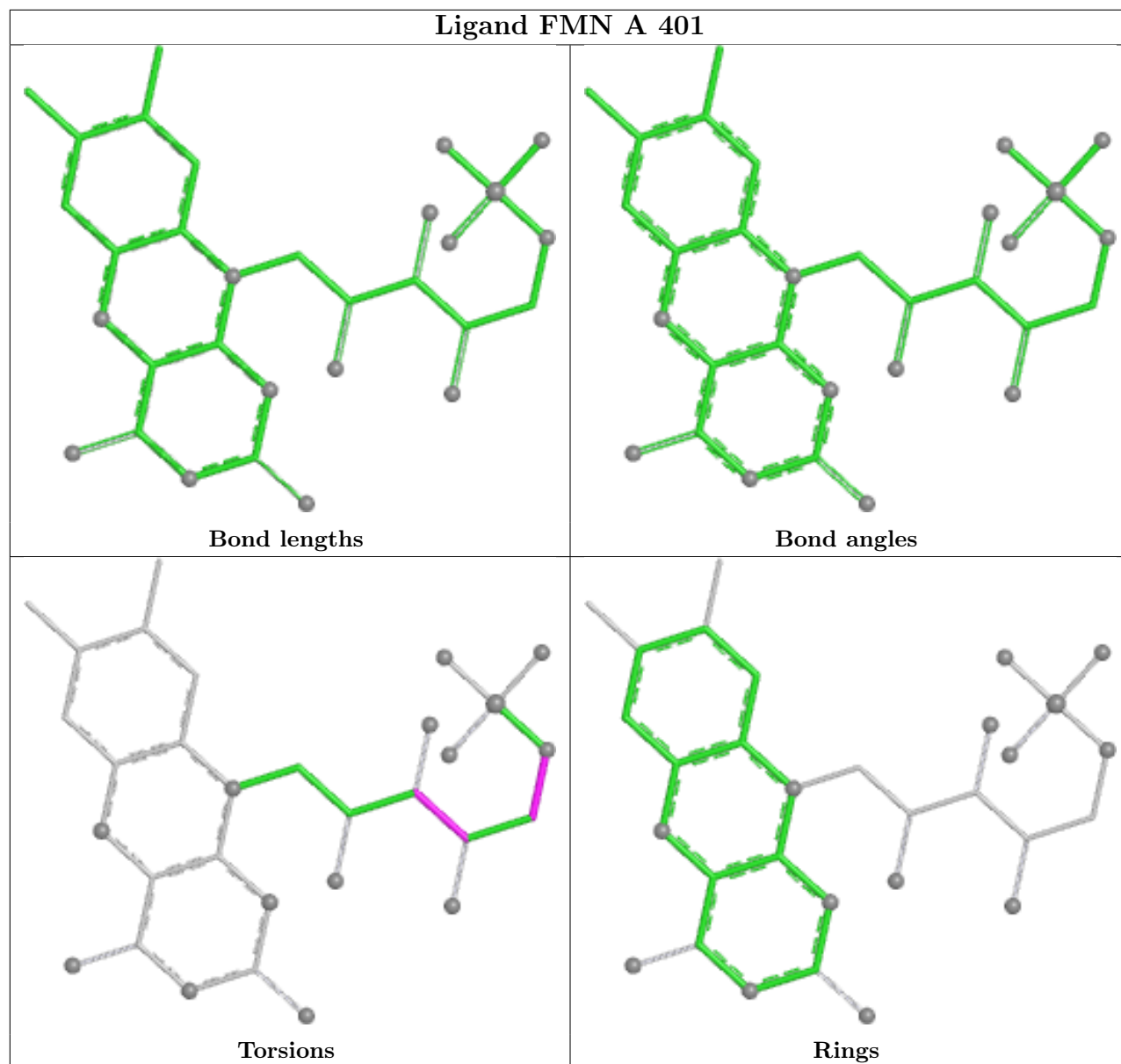
There are no ring outliers.

1 monomer is involved in 1 short contact:

Mol	Chain	Res	Type	Clashes	Symm-Clashes
8	A	424	EDO	1	0

The following is a two-dimensional graphical depiction of Mogul quality analysis of bond lengths, bond angles, torsion angles, and ring geometry for all instances of the Ligand of Interest. In addition, ligands with molecular weight > 250 and outliers as shown on the validation Tables will also be included. For torsion angles, if less than 5% of the Mogul distribution of torsion angles is within 10 degrees of the torsion angle in question, then that torsion angle is considered an outlier. Any bond that is central to one or more torsion angles identified as an outlier by Mogul will be highlighted in the graph. For rings, the root-mean-square deviation (RMSD) between the ring in question and similar rings identified by Mogul is calculated over all ring torsion angles. If the average RMSD is greater than 60 degrees and the minimal RMSD between the ring in question and any Mogul-identified rings is also greater than 60 degrees, then that ring is considered an outlier. The outliers are highlighted in purple. The color gray indicates Mogul did not find sufficient equivalents in the CSD to analyse the geometry.





## 5.7 Other polymers [i](#)

There are no such residues in this entry.

## 5.8 Polymer linkage issues [i](#)

There are no chain breaks in this entry.

## 6 Fit of model and data

### 6.1 Protein, DNA and RNA chains

In the following table, the column labelled ‘#RSRZ> 2’ contains the number (and percentage) of RSRZ outliers, followed by percent RSRZ outliers for the chain as percentile scores relative to all X-ray entries and entries of similar resolution. The OWAB column contains the minimum, median, 95<sup>th</sup> percentile and maximum values of the occupancy-weighted average B-factor per residue. The column labelled ‘Q< 0.9’ lists the number of (and percentage) of residues with an average occupancy less than 0.9.

Mol	Chain	Analysed	<RSRZ>	#RSRZ>2		OWAB(Å <sup>2</sup> )	Q<0.9
1	A	366/369 (99%)	0.20	22 (6%)	27 32	5, 20, 43, 67	31 (8%)

All (22) RSRZ outliers are listed below:

Mol	Chain	Res	Type	RSRZ
1	A	189	VAL	8.2
1	A	224	LEU	4.9
1	A	167[A]	LYS	4.8
1	A	72	ARG	4.6
1	A	31	ALA	4.5
1	A	219	ALA	4.4
1	A	225	GLN	3.9
1	A	73	PHE	3.8
1	A	226	GLY	3.3
1	A	74	GLN	3.2
1	A	32	THR	2.9
1	A	170[A]	LYS	2.9
1	A	33	GLY	2.9
1	A	67	LEU	2.9
1	A	213	VAL	2.7
1	A	62[A]	PHE	2.5
1	A	218	THR	2.5
1	A	187	THR	2.3
1	A	190	ASP	2.3
1	A	223[A]	SER	2.3
1	A	221	LEU	2.3
1	A	61[A]	ARG	2.2

### 6.2 Non-standard residues in protein, DNA, RNA chains

There are no non-standard protein/DNA/RNA residues in this entry.

## 6.3 Carbohydrates ⓘ

There are no oligosaccharides in this entry.

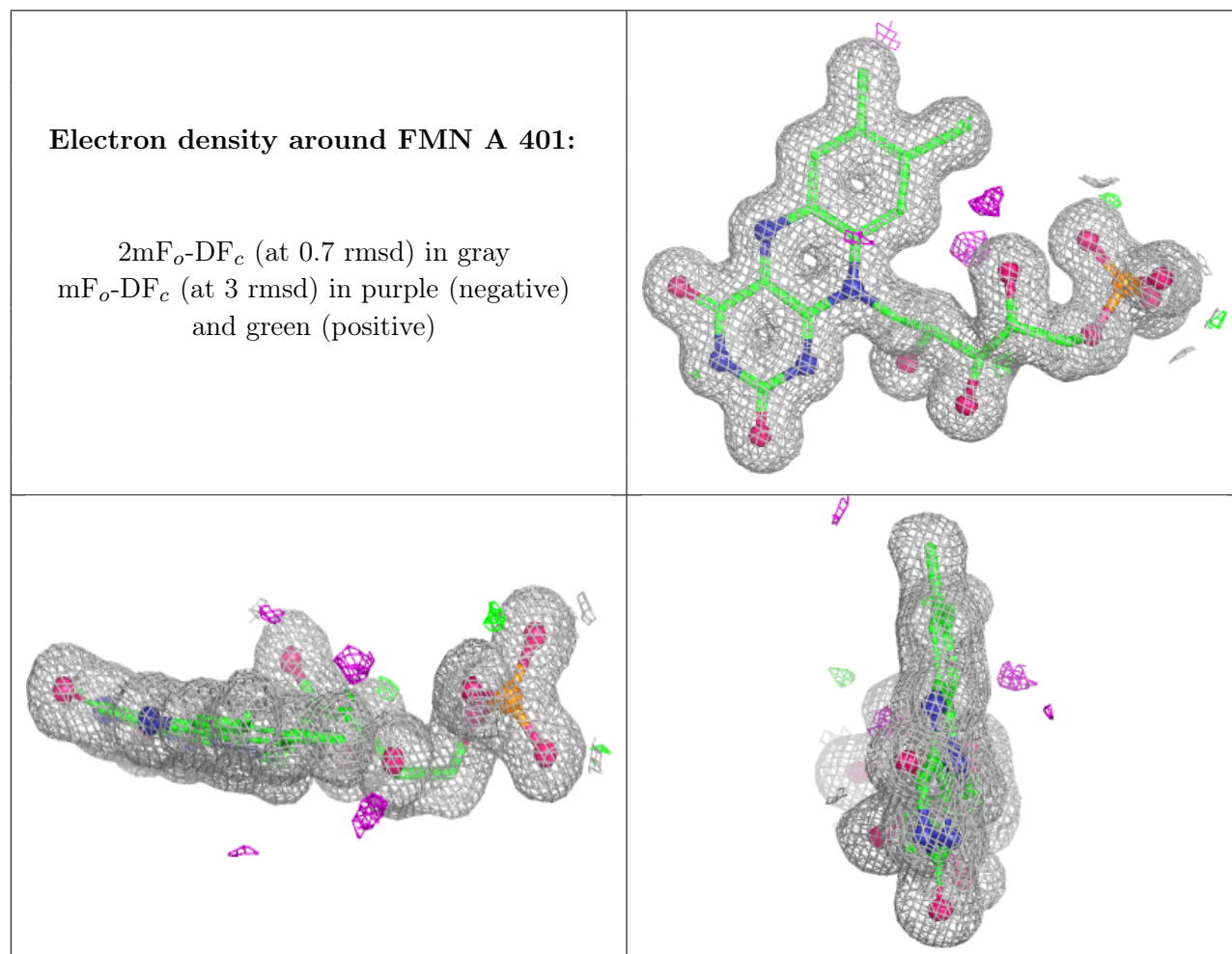
## 6.4 Ligands ⓘ

In the following table, the Atoms column lists the number of modelled atoms in the group and the number defined in the chemical component dictionary. The B-factors column lists the minimum, median, 95<sup>th</sup> percentile and maximum values of B factors of atoms in the group. The column labelled 'Q< 0.9' lists the number of atoms with occupancy less than 0.9.

Mol	Type	Chain	Res	Atoms	RSCC	RSR	B-factors(Å <sup>2</sup> )	Q<0.9
8	EDO	A	421	4/4	0.74	0.31	55,68,82,98	0
8	EDO	A	427	4/4	0.74	0.23	74,75,77,81	0
8	EDO	A	424	4/4	0.82	0.22	52,60,69,82	0
9	GOL	A	429	6/6	0.82	0.15	37,44,49,53	0
8	EDO	A	428	4/4	0.85	0.24	62,64,70,76	0
8	EDO	A	420	4/4	0.86	0.22	43,66,77,85	0
5	SO4	A	418	5/5	0.87	0.11	55,63,71,82	5
9	GOL	A	423	6/6	0.87	0.20	31,58,70,73	0
7	CL	A	417	1/1	0.87	0.18	56,56,56,56	0
10	PGE	A	426	10/10	0.88	0.17	62,74,89,96	0
5	SO4	A	413	5/5	0.89	0.15	51,52,64,71	5
6	ACT	A	425	4/4	0.90	0.16	36,39,56,68	0
8	EDO	A	422	4/4	0.90	0.17	44,53,69,76	0
7	CL	A	411	1/1	0.91	0.13	57,57,57,57	0
7	CL	A	410	1/1	0.92	0.14	72,72,72,72	0
7	CL	A	415	1/1	0.92	0.26	54,54,54,54	0
5	SO4	A	405	5/5	0.94	0.08	57,60,76,76	0
6	ACT	A	406	4/4	0.95	0.09	24,25,27,31	0
7	CL	A	416	1/1	0.95	0.22	44,44,44,44	0
5	SO4	A	419	5/5	0.95	0.14	21,22,48,58	5
3	ORO	A	402	11/11	0.98	0.05	14,15,17,18	0
7	CL	A	407	1/1	0.98	0.07	31,31,31,31	1
2	FMN	A	401	31/31	0.99	0.03	13,14,15,17	0
4	A1A4P	A	403	32/32	0.99	0.04	16,18,25,25	0
5	SO4	A	404	5/5	0.99	0.05	25,26,32,38	5
7	CL	A	414	1/1	0.99	0.17	28,28,28,28	1
7	CL	A	409	1/1	1.00	0.02	20,20,20,20	0
7	CL	A	412	1/1	1.00	0.03	23,23,23,23	1
7	CL	A	408	1/1	1.00	0.03	26,26,26,26	1

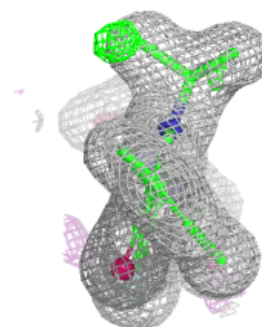
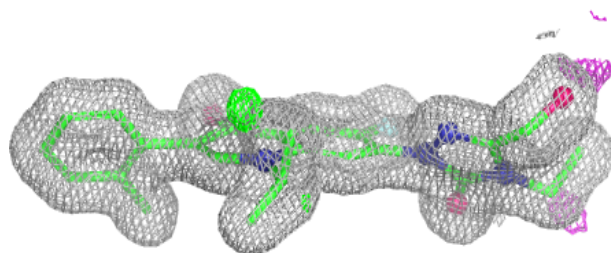
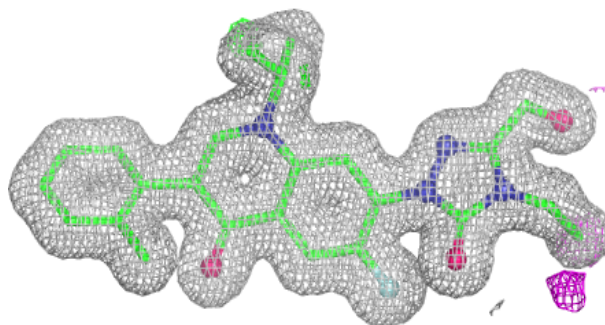
The following is a graphical depiction of the model fit to experimental electron density of all instances of the Ligand of Interest. In addition, ligands with molecular weight > 250 and outliers

as shown on the geometry validation Tables will also be included. Each fit is shown from different orientation to approximate a three-dimensional view.



**Electron density around A1A4P A 403:**

$2mF_o-DF_c$  (at 0.7 rmsd) in gray  
 $mF_o-DF_c$  (at 3 rmsd) in purple (negative)  
and green (positive)



## 6.5 Other polymers [i](#)

There are no such residues in this entry.