



Full wwPDB X-ray Structure Validation Report ⓘ

Mar 5, 2026 – 01:03 AM UTC

PDB ID : 9D0Q / pdb_00009d0q
Title : Crystal structure of human Wee1 kinase domain in complex with inhibitor
Authors : Bell, J.A.
Deposited on : 2024-08-07
Resolution : 1.96 Å(reported)

This is a Full wwPDB X-ray Structure Validation Report for a publicly released PDB entry.

We welcome your comments at validation@mail.wwpdb.org

A user guide is available at

<https://www.wwpdb.org/validation/2017/XrayValidationReportHelp>

with specific help available everywhere you see the ⓘ symbol.

The types of validation reports are described at

<http://www.wwpdb.org/validation/2017/FAQs#types>.

The following versions of software and data (see [references ⓘ](#)) were used in the production of this report:

MolProbity	:	4-5-2 with Phenix2.0
Mogul	:	2022.3.0, CSD as543be (2022)
Xtriage (Phenix)	:	2.0
EDS	:	3.0
Buster-report	:	wwPDB partial adaption of 1.1.7 (2018)
Percentile statistics	:	20250101.v01 (using entries in the PDB archive January 1st 2025)
CCP4	:	9.0.010 (Gargrove)
Density-Fitness	:	1.0.12
Ideal geometry (proteins)	:	Engh & Huber (2001)
Ideal geometry (DNA, RNA)	:	Parkinson et al. (1996)
Validation Pipeline (wwPDB-VP)	:	2.49

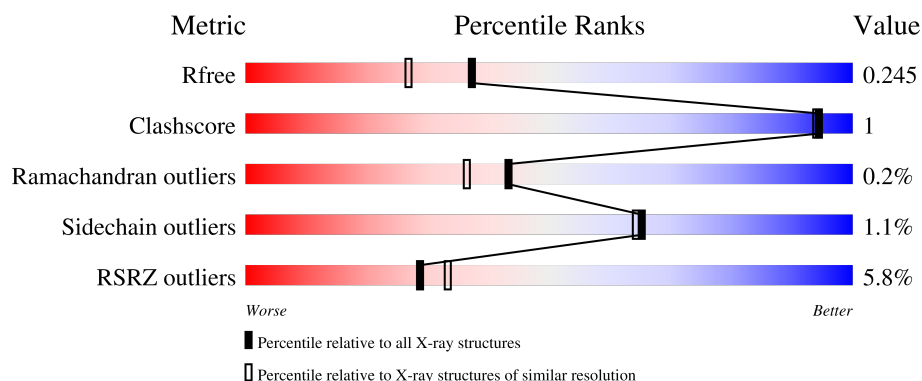
1 Overall quality at a glance

The following experimental techniques were used to determine the structure:

X-RAY DIFFRACTION

The reported resolution of this entry is 1.96 Å.

Percentile scores (ranging between 0-100) for global validation metrics of the entry are shown in the following graphic. The table shows the number of entries on which the scores are based.



Metric	Whole archive (#Entries)	Similar resolution (#Entries, resolution range(Å))
R_{free}	180053	3494 (1.96-1.96)
Clashscore	190562	3612 (1.96-1.96)
Ramachandran outliers	187476	3587 (1.96-1.96)
Sidechain outliers	187428	3587 (1.96-1.96)
RSRZ outliers	180081	3495 (1.96-1.96)

The table below summarises the geometric issues observed across the polymeric chains and their fit to the electron density. The red, orange, yellow and green segments of the lower bar indicate the fraction of residues that contain outliers for ≥ 3 , 2, 1 and 0 types of geometric quality criteria respectively. A grey segment represents the fraction of residues that are not modelled. The numeric value for each fraction is indicated below the corresponding segment, with a dot representing fractions $\leq 5\%$. The upper red bar (where present) indicates the fraction of residues that have poor fit to the electron density. The numeric value is given above the bar.

Mol	Chain	Length	Quality of chain
1	A	289	 4% 88% 6% 5%
1	B	289	 7% 89% 7% .

2 Entry composition

There are 5 unique types of molecules in this entry. The entry contains 9808 atoms, of which 5052 are hydrogens and 0 are deuteriums.

In the tables below, the ZeroOcc column contains the number of atoms modelled with zero occupancy, the AltConf column contains the number of residues with at least one atom in alternate conformation and the Trace column contains the number of residues modelled with at most 2 atoms.

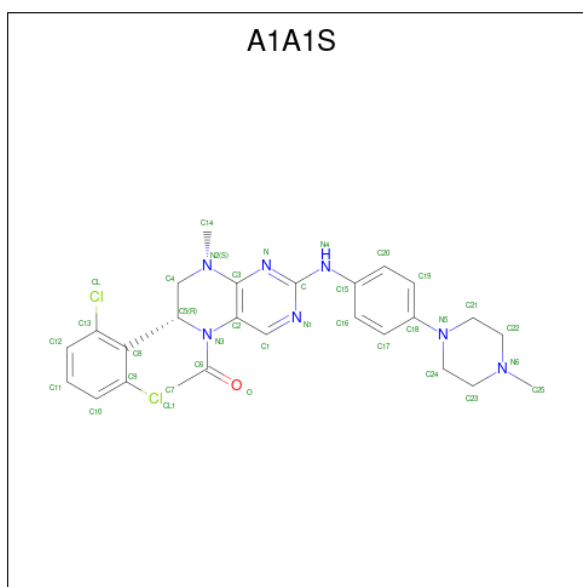
- Molecule 1 is a protein called Wee1-like protein kinase.

Mol	Chain	Residues	Atoms						ZeroOcc	AltConf	Trace
1	A	274	Total	C	H	N	O	S	0	0	0
			4324	1367	2163	385	396	13			
1	B	276	Total	C	H	N	O	S	0	0	0
			4364	1377	2183	391	400	13			

There are 8 discrepancies between the modelled and reference sequences:

Chain	Residue	Modelled	Actual	Comment	Reference
A	287	GLY	-	expression tag	UNP P30291
A	288	ALA	-	expression tag	UNP P30291
A	289	MET	-	expression tag	UNP P30291
A	290	GLY	-	expression tag	UNP P30291
B	287	GLY	-	expression tag	UNP P30291
B	288	ALA	-	expression tag	UNP P30291
B	289	MET	-	expression tag	UNP P30291
B	290	GLY	-	expression tag	UNP P30291

- Molecule 2 is 1-[(6R)-6-(2,6-dichlorophenyl)-8-methyl-2-[4-(4-methylpiperazin-1-yl)anilino]-7,8-dihydropteridin-5(6H)-yl]ethan-1-one (CCD ID: A1A1S) (formula: C₂₆H₂₉Cl₂N₇O) (labeled as "Ligand of Interest" by depositor).



Mol	Chain	Residues	Atoms						ZeroOcc	AltConf
2	A	1	Total 66	C 26	Cl 2	H 30	N 7	O 1	0	0
2	B	1	Total 66	C 26	Cl 2	H 30	N 7	O 1	0	0

- Molecule 3 is SODIUM ION (CCD ID: NA) (formula: Na).

Mol	Chain	Residues	Atoms		ZeroOcc	AltConf
3	A	1	Total	Na	0	0
			1	1		
3	B	1	Total	Na	0	0
			1	1		

- Molecule 4 is CHLORIDE ION (CCD ID: CL) (formula: Cl).

Mol	Chain	Residues	Atoms		ZeroOcc	AltConf
4	A	8	Total	Cl	0	0
			8	8		
4	B	9	Total	Cl	0	0
			9	9		

- Molecule 5 is water.

Mol	Chain	Residues	Atoms			ZeroOcc	AltConf
5	A	175	Total	H	O	0	0
			525	350	175		

Continued on next page...

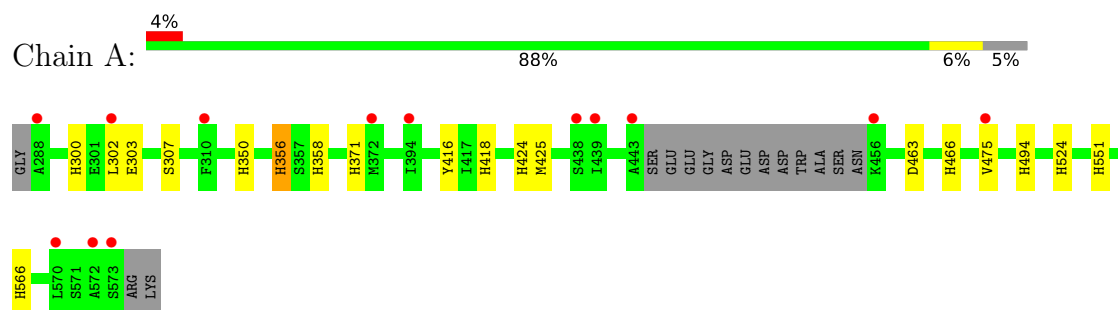
Continued from previous page...

Mol	Chain	Residues	Atoms			ZeroOcc	AltConf
5	B	148	Total 444	H 296	O 148	0	0

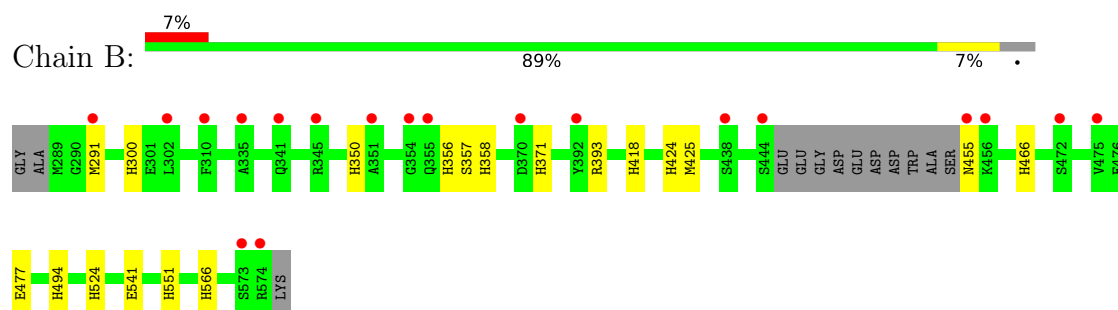
3 Residue-property plots [i](#)

These plots are drawn for all protein, RNA, DNA and oligosaccharide chains in the entry. The first graphic for a chain summarises the proportions of the various outlier classes displayed in the second graphic. The second graphic shows the sequence view annotated by issues in geometry and electron density. Residues are color-coded according to the number of geometric quality criteria for which they contain at least one outlier: green = 0, yellow = 1, orange = 2 and red = 3 or more. A red dot above a residue indicates a poor fit to the electron density ($RSRZ > 2$). Stretches of 2 or more consecutive residues without any outlier are shown as a green connector. Residues present in the sample, but not in the model, are shown in grey.

- Molecule 1: Wee1-like protein kinase



- Molecule 1: Wee1-like protein kinase



4 Data and refinement statistics

Property	Value	Source
Space group	C 2 2 21	Depositor
Cell constants a, b, c, α , β , γ	95.23Å 98.45Å 159.43Å 90.00° 90.00° 90.00°	Depositor
Resolution (Å)	51.93 – 1.96 51.93 – 1.96	Depositor EDS
% Data completeness (in resolution range)	100.0 (51.93-1.96) 100.0 (51.93-1.96)	Depositor EDS
R_{merge}	0.07	Depositor
R_{sym}	(Not available)	Depositor
$\langle I/\sigma(I) \rangle$ ¹	1.47 (at 1.97Å)	Xtriage
Refinement program	PRIME-X	Depositor
R, R_{free}	0.209 , 0.270 (Not available) , 0.245	Depositor DCC
R_{free} test set	2632 reflections (4.87%)	wwPDB-VP
Wilson B-factor (Å ²)	42.9	Xtriage
Anisotropy	0.167	Xtriage
Bulk solvent k_{sol} (e/Å ³), B_{sol} (Å ²)	0.43 , 46.7	EDS
L-test for twinning ²	$\langle L \rangle = 0.49$, $\langle L^2 \rangle = 0.33$	Xtriage
Estimated twinning fraction	0.032 for -k,-h,-l	Xtriage
F_o, F_c correlation	0.96	EDS
Total number of atoms	9808	wwPDB-VP
Average B, all atoms (Å ²)	51.0	wwPDB-VP

Xtriage's analysis on translational NCS is as follows: *The largest off-origin peak in the Patterson function is 3.88% of the height of the origin peak. No significant pseudotranslation is detected.*

¹Intensities estimated from amplitudes.

²Theoretical values of $\langle |L| \rangle$, $\langle L^2 \rangle$ for acentric reflections are 0.5, 0.333 respectively for untwinned datasets, and 0.375, 0.2 for perfectly twinned datasets.

5 Model quality ⓘ

5.1 Standard geometry ⓘ

Bond lengths and bond angles in the following residue types are not validated in this section: CL, NA, A1A1S

The Z score for a bond length (or angle) is the number of standard deviations the observed value is removed from the expected value. A bond length (or angle) with $|Z| > 5$ is considered an outlier worth inspection. RMSZ is the root-mean-square of all Z scores of the bond lengths (or angles).

Mol	Chain	Bond lengths		Bond angles	
		RMSZ	$\# Z > 5$	RMSZ	$\# Z > 5$
1	A	0.75	0/2206	1.20	16/2976 (0.5%)
1	B	0.77	1/2226 (0.0%)	1.16	14/3002 (0.5%)
All	All	0.76	1/4432 (0.0%)	1.18	30/5978 (0.5%)

All (1) bond length outliers are listed below:

Mol	Chain	Res	Type	Atoms	Z	Observed(Å)	Ideal(Å)
1	B	466	HIS	CG-CD2	5.21	1.41	1.35

All (30) bond angle outliers are listed below:

Mol	Chain	Res	Type	Atoms	Z	Observed(°)	Ideal(°)
1	A	302	LEU	CA-C-O	7.28	122.91	118.33
1	B	455	ASN	CA-CB-CG	5.92	118.52	112.60
1	A	350	HIS	ND1-CE1-NE2	5.91	114.31	108.40
1	A	551	HIS	ND1-CE1-NE2	5.88	114.28	108.40
1	A	300	HIS	ND1-CE1-NE2	5.88	114.28	108.40
1	A	371	HIS	ND1-CE1-NE2	5.87	114.27	108.40
1	A	418	HIS	ND1-CE1-NE2	5.87	114.27	108.40
1	A	424	HIS	ND1-CE1-NE2	5.87	114.27	108.40
1	B	356	HIS	ND1-CE1-NE2	5.87	114.27	108.40
1	B	418	HIS	ND1-CE1-NE2	5.87	114.27	108.40
1	A	466	HIS	ND1-CE1-NE2	5.87	114.27	108.40
1	B	424	HIS	ND1-CE1-NE2	5.86	114.26	108.40
1	B	494	HIS	ND1-CE1-NE2	5.84	114.24	108.40
1	A	356	HIS	ND1-CE1-NE2	5.83	114.23	108.40
1	B	371	HIS	ND1-CE1-NE2	5.82	114.22	108.40
1	A	524	HIS	ND1-CE1-NE2	5.82	114.22	108.40
1	A	566	HIS	ND1-CE1-NE2	5.81	114.21	108.40
1	B	358	HIS	ND1-CE1-NE2	5.79	114.19	108.40

Continued on next page...

Continued from previous page...

Mol	Chain	Res	Type	Atoms	Z	Observed(°)	Ideal(°)
1	A	494	HIS	ND1-CE1-NE2	5.78	114.18	108.40
1	B	551	HIS	ND1-CE1-NE2	5.77	114.17	108.40
1	A	358	HIS	ND1-CE1-NE2	5.76	114.16	108.40
1	B	566	HIS	ND1-CE1-NE2	5.72	114.12	108.40
1	B	524	HIS	ND1-CE1-NE2	5.71	114.11	108.40
1	B	300	HIS	ND1-CE1-NE2	5.71	114.11	108.40
1	B	350	HIS	ND1-CE1-NE2	5.63	114.03	108.40
1	B	357	SER	N-CA-C	5.54	118.08	111.71
1	B	358	HIS	CA-CB-CG	-5.40	108.40	113.80
1	A	303	GLU	N-CA-CB	-5.20	102.32	109.97
1	A	302	LEU	CA-C-N	5.10	128.11	120.87
1	A	302	LEU	C-N-CA	5.10	128.11	120.87

There are no chirality outliers.

There are no planarity outliers.

5.2 Too-close contacts

In the following table, the Non-H and H(model) columns list the number of non-hydrogen atoms and hydrogen atoms in the chain respectively. The H(added) column lists the number of hydrogen atoms added and optimized by MolProbity. The Clashes column lists the number of clashes within the asymmetric unit, whereas Symm-Clashes lists symmetry-related clashes.

Mol	Chain	Non-H	H(model)	H(added)	Clashes	Symm-Clashes
1	A	2161	2163	2161	4	0
1	B	2181	2183	2180	1	0
2	A	36	30	0	3	0
2	B	36	30	0	3	0
3	A	1	0	0	0	0
3	B	1	0	0	0	0
4	A	8	0	0	0	0
4	B	9	0	0	0	0
5	A	175	350	0	1	0
5	B	148	296	0	1	0
All	All	4756	5052	4341	11	0

The all-atom clashscore is defined as the number of clashes found per 1000 atoms (including hydrogen atoms). The all-atom clashscore for this structure is 1.

All (11) close contacts within the same asymmetric unit are listed below, sorted by their clash magnitude.

Atom-1	Atom-2	Interatomic distance (Å)	Clash overlap (Å)
1:A:425:MET:HE2	1:A:475:VAL:HG11	1.81	0.62
2:A:601:A1A1S:C7	2:A:601:A1A1S:C1	2.82	0.58
2:B:601:A1A1S:C1	2:B:601:A1A1S:C7	2.83	0.56
1:A:425:MET:HE2	1:A:475:VAL:CG1	2.36	0.55
2:A:601:A1A1S:CL1	2:A:601:A1A1S:C4	2.97	0.50
2:B:601:A1A1S:O	2:B:601:A1A1S:C8	2.65	0.44
1:B:425:MET:HE3	5:B:735:HOH:O	2.19	0.43
2:B:601:A1A1S:C4	2:B:601:A1A1S:CL1	3.04	0.42
1:A:425:MET:HE3	5:A:719:HOH:O	2.20	0.42
2:A:601:A1A1S:C8	2:A:601:A1A1S:O	2.68	0.42
1:A:356:HIS:HB2	1:A:416:TYR:CD2	2.55	0.41

There are no symmetry-related clashes.

5.3 Torsion angles [i](#)

5.3.1 Protein backbone [i](#)

In the following table, the Percentiles column shows the percent Ramachandran outliers of the chain as a percentile score with respect to all X-ray entries followed by that with respect to entries of similar resolution.

The Analysed column shows the number of residues for which the backbone conformation was analysed, and the total number of residues.

Mol	Chain	Analysed	Favoured	Allowed	Outliers	Percentiles	
1	A	270/289 (93%)	264 (98%)	5 (2%)	1 (0%)	30	21
1	B	272/289 (94%)	267 (98%)	5 (2%)	0	100	100
All	All	542/578 (94%)	531 (98%)	10 (2%)	1 (0%)	43	36

All (1) Ramachandran outliers are listed below:

Mol	Chain	Res	Type
1	A	463	ASP

5.3.2 Protein sidechains [i](#)

In the following table, the Percentiles column shows the percent sidechain outliers of the chain as a percentile score with respect to all X-ray entries followed by that with respect to entries of similar resolution.

The Analysed column shows the number of residues for which the sidechain conformation was analysed, and the total number of residues.

Mol	Chain	Analysed	Rotameric	Outliers	Percentiles	
1	A	234/246 (95%)	233 (100%)	1 (0%)	84	85
1	B	237/246 (96%)	233 (98%)	4 (2%)	53	49
All	All	471/492 (96%)	466 (99%)	5 (1%)	65	64

All (5) residues with a non-rotameric sidechain are listed below:

Mol	Chain	Res	Type
1	A	307	SER
1	B	291	MET
1	B	393	ARG
1	B	477	GLU
1	B	541	GLU

Sometimes sidechains can be flipped to improve hydrogen bonding and reduce clashes. All (5) such sidechains are listed below:

Mol	Chain	Res	Type
1	A	474	GLN
1	B	300	HIS
1	B	466	HIS
1	B	485	ASN
1	B	489	GLN

5.3.3 RNA ⓘ

There are no RNA molecules in this entry.

5.4 Non-standard residues in protein, DNA, RNA chains ⓘ

There are no non-standard protein/DNA/RNA residues in this entry.

5.5 Carbohydrates ⓘ

There are no oligosaccharides in this entry.

5.6 Ligand geometry

Of 21 ligands modelled in this entry, 19 are monoatomic - leaving 2 for Mogul analysis.

In the following table, the Counts columns list the number of bonds (or angles) for which Mogul statistics could be retrieved, the number of bonds (or angles) that are observed in the model and the number of bonds (or angles) that are defined in the Chemical Component Dictionary. The Link column lists molecule types, if any, to which the group is linked. The Z score for a bond length (or angle) is the number of standard deviations the observed value is removed from the expected value. A bond length (or angle) with $|Z| > 2$ is considered an outlier worth inspection. RMSZ is the root-mean-square of all Z scores of the bond lengths (or angles).

Mol	Type	Chain	Res	Link	Bond lengths			Bond angles		
					Counts	RMSZ	# Z > 2	Counts	RMSZ	# Z > 2
2	A1A1S	A	601	-	39,40,40	1.09	2 (5%)	51,58,58	1.75	7 (13%)
2	A1A1S	B	601	-	39,40,40	1.28	2 (5%)	51,58,58	1.62	9 (17%)

In the following table, the Chirals column lists the number of chiral outliers, the number of chiral centers analysed, the number of these observed in the model and the number defined in the Chemical Component Dictionary. Similar counts are reported in the Torsion and Rings columns. '-' means no outliers of that kind were identified.

Mol	Type	Chain	Res	Link	Chirals	Torsions	Rings
2	A1A1S	A	601	-	-	4/16/42/42	0/4/5/5
2	A1A1S	B	601	-	-	3/16/42/42	0/4/5/5

All (4) bond length outliers are listed below:

Mol	Chain	Res	Type	Atoms	Z	Observed(Å)	Ideal(Å)
2	A	601	A1A1S	C4-C5	3.49	1.56	1.52
2	B	601	A1A1S	C9-C8	3.19	1.44	1.39
2	B	601	A1A1S	C2-C3	-2.86	1.38	1.41
2	A	601	A1A1S	C9-C8	2.38	1.43	1.39

All (16) bond angle outliers are listed below:

Mol	Chain	Res	Type	Atoms	Z	Observed(°)	Ideal(°)
2	A	601	A1A1S	C8-C5-N3	7.99	122.35	112.21
2	B	601	A1A1S	C8-C5-N3	6.66	120.66	112.21
2	B	601	A1A1S	C9-C8-C13	3.85	119.26	114.92
2	A	601	A1A1S	C9-C8-C13	3.82	119.22	114.92
2	B	601	A1A1S	C5-N3-C6	3.33	120.64	116.39
2	A	601	A1A1S	C5-N3-C6	3.31	120.62	116.39
2	A	601	A1A1S	C21-N5-C24	3.27	118.91	111.57

Continued on next page...

Continued from previous page...

Mol	Chain	Res	Type	Atoms	Z	Observed(°)	Ideal(°)
2	B	601	A1A1S	C14-N2-C4	3.21	120.53	114.99
2	A	601	A1A1S	C14-N2-C4	3.05	120.27	114.99
2	B	601	A1A1S	C21-N5-C24	2.68	117.60	111.57
2	B	601	A1A1S	C5-C4-N2	2.48	113.10	109.43
2	A	601	A1A1S	C4-C5-N3	-2.35	105.01	108.31
2	B	601	A1A1S	C2-N3-C6	-2.16	122.23	124.98
2	B	601	A1A1S	O-C6-N3	2.10	123.00	120.71
2	B	601	A1A1S	C10-C9-C8	-2.06	119.65	122.38
2	A	601	A1A1S	O-C6-N3	2.05	122.94	120.71

There are no chirality outliers.

All (7) torsion outliers are listed below:

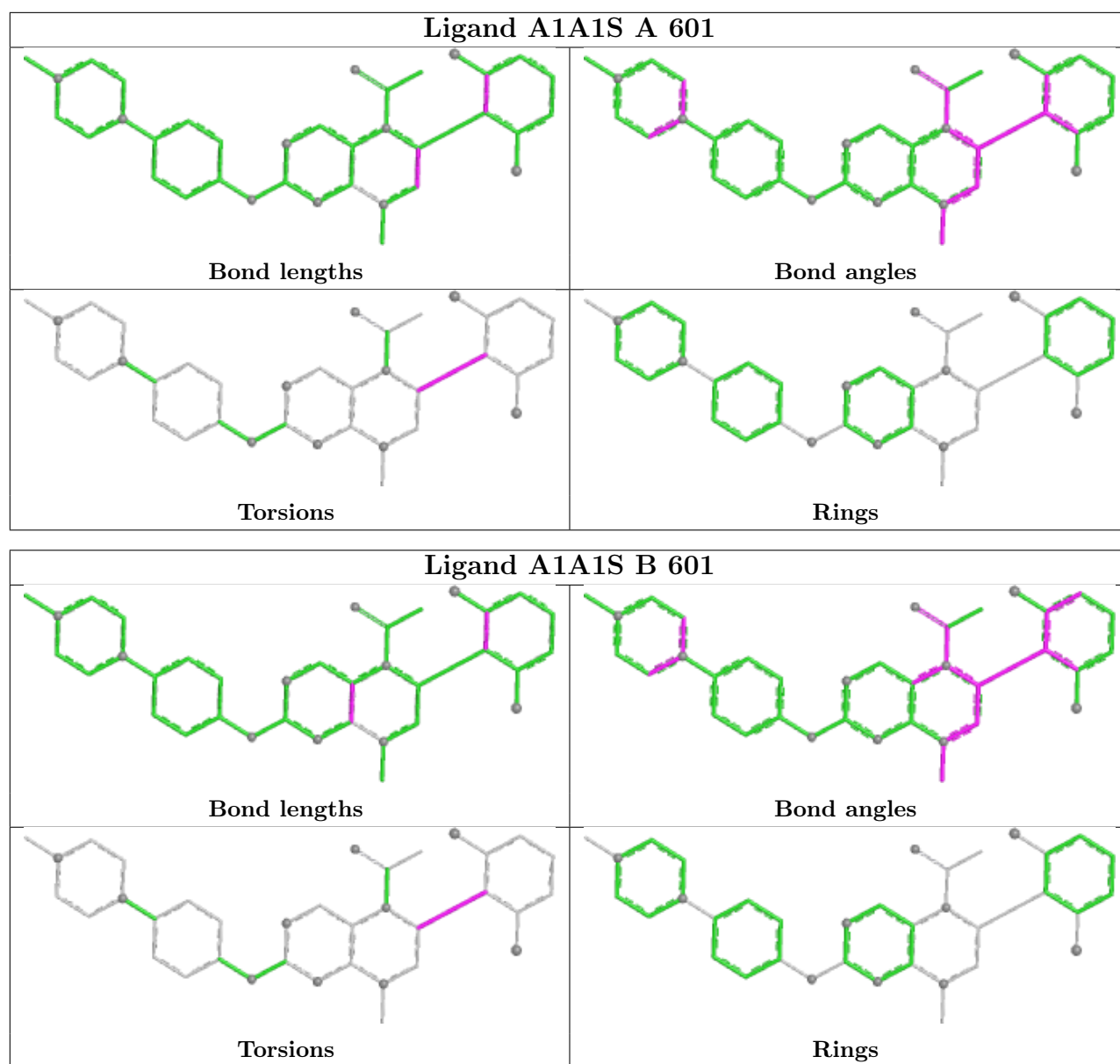
Mol	Chain	Res	Type	Atoms
2	A	601	A1A1S	C4-C5-C8-C13
2	A	601	A1A1S	C4-C5-C8-C9
2	B	601	A1A1S	C4-C5-C8-C13
2	B	601	A1A1S	C4-C5-C8-C9
2	A	601	A1A1S	N3-C5-C8-C13
2	A	601	A1A1S	N3-C5-C8-C9
2	B	601	A1A1S	N3-C5-C8-C13

There are no ring outliers.

2 monomers are involved in 6 short contacts:

Mol	Chain	Res	Type	Clashes	Symm-Clashes
2	A	601	A1A1S	3	0
2	B	601	A1A1S	3	0

The following is a two-dimensional graphical depiction of Mogul quality analysis of bond lengths, bond angles, torsion angles, and ring geometry for all instances of the Ligand of Interest. In addition, ligands with molecular weight > 250 and outliers as shown on the validation Tables will also be included. For torsion angles, if less than 5% of the Mogul distribution of torsion angles is within 10 degrees of the torsion angle in question, then that torsion angle is considered an outlier. Any bond that is central to one or more torsion angles identified as an outlier by Mogul will be highlighted in the graph. For rings, the root-mean-square deviation (RMSD) between the ring in question and similar rings identified by Mogul is calculated over all ring torsion angles. If the average RMSD is greater than 60 degrees and the minimal RMSD between the ring in question and any Mogul-identified rings is also greater than 60 degrees, then that ring is considered an outlier. The outliers are highlighted in purple. The color gray indicates Mogul did not find sufficient equivalents in the CSD to analyse the geometry.



5.7 Other polymers [i](#)

There are no such residues in this entry.

5.8 Polymer linkage issues [i](#)

There are no chain breaks in this entry.

6 Fit of model and data [i](#)

6.1 Protein, DNA and RNA chains [i](#)

In the following table, the column labelled ‘#RSRZ > 2’ contains the number (and percentage) of RSRZ outliers, followed by percent RSRZ outliers for the chain as percentile scores relative to all X-ray entries and entries of similar resolution. The OWAB column contains the minimum, median, 95th percentile and maximum values of the occupancy-weighted average B-factor per residue. The column labelled ‘Q < 0.9’ lists the number of (and percentage) of residues with an average occupancy less than 0.9.

Mol	Chain	Analysed	<RSRZ>	#RSRZ>2	OWAB(Å ²)	Q<0.9
1	A	274/289 (94%)	0.51	13 (4%) 36 42	27, 48, 73, 98	0
1	B	276/289 (95%)	0.43	19 (6%) 23 26	29, 46, 87, 106	0
All	All	550/578 (95%)	0.47	32 (5%) 29 33	27, 47, 80, 106	0

All (32) RSRZ outliers are listed below:

Mol	Chain	Res	Type	RSRZ
1	B	310	PHE	5.5
1	B	573	SER	3.4
1	A	443	ALA	3.4
1	A	572	ALA	3.3
1	B	574	ARG	3.1
1	B	351	ALA	2.9
1	B	354	GLY	2.9
1	B	455	ASN	2.8
1	B	475	VAL	2.8
1	B	345	ARG	2.7
1	B	444	SER	2.6
1	A	570	LEU	2.6
1	A	288	ALA	2.6
1	A	456	LYS	2.6
1	A	439	ILE	2.6
1	A	573	SER	2.6
1	B	392	TYR	2.5
1	A	475	VAL	2.4
1	B	291	MET	2.4
1	B	341	GLN	2.4
1	A	310	PHE	2.4
1	B	472	SER	2.4
1	A	394	ILE	2.3
1	B	456	LYS	2.3

Continued on next page...

Continued from previous page...

Mol	Chain	Res	Type	RSRZ
1	B	355	GLN	2.3
1	A	302	LEU	2.3
1	B	302	LEU	2.1
1	B	335	ALA	2.1
1	B	370	ASP	2.1
1	A	438	SER	2.1
1	B	438	SER	2.1
1	A	372	MET	2.0

6.2 Non-standard residues in protein, DNA, RNA chains [i](#)

There are no non-standard protein/DNA/RNA residues in this entry.

6.3 Carbohydrates [i](#)

There are no oligosaccharides in this entry.

6.4 Ligands [i](#)

In the following table, the Atoms column lists the number of modelled atoms in the group and the number defined in the chemical component dictionary. The B-factors column lists the minimum, median, 95th percentile and maximum values of B factors of atoms in the group. The column labelled 'Q< 0.9' lists the number of atoms with occupancy less than 0.9.

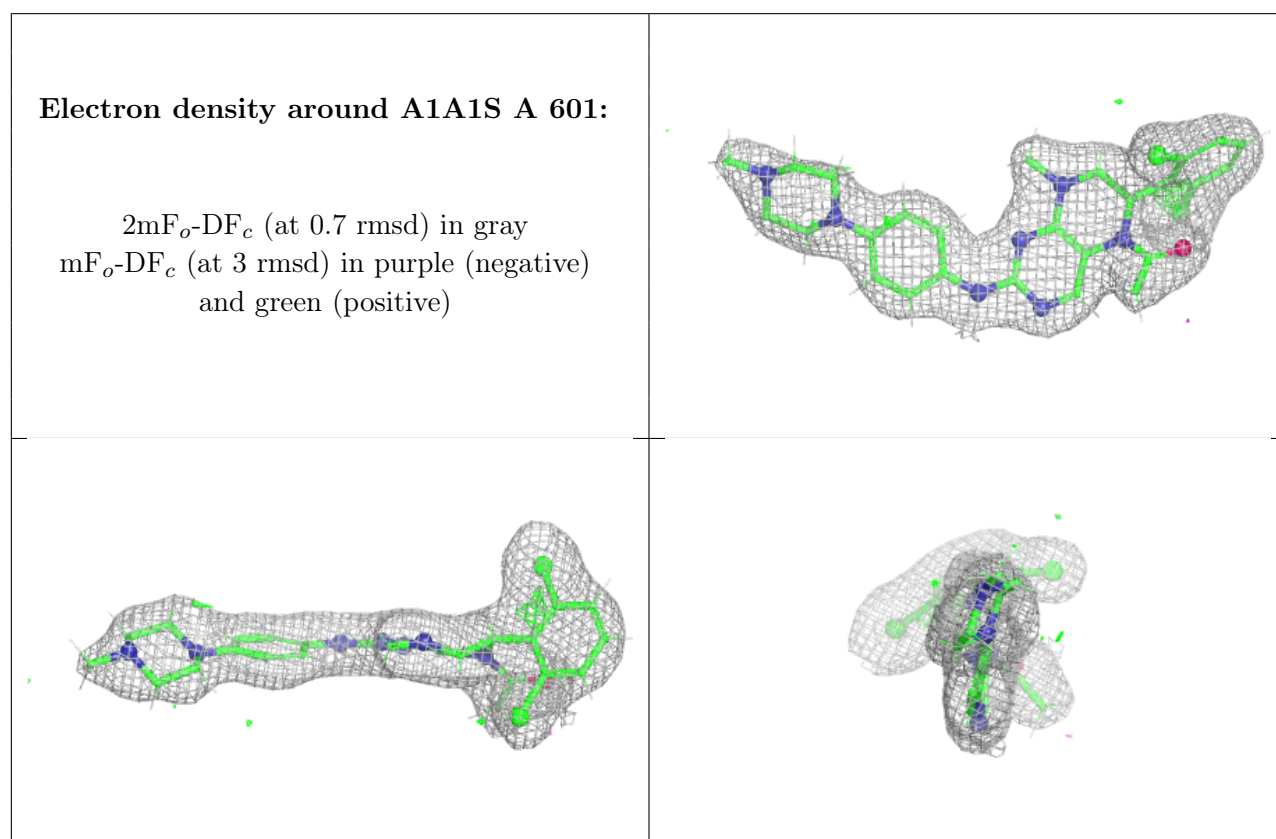
Mol	Type	Chain	Res	Atoms	RSCC	RSR	B-factors(Å ²)	Q<0.9
3	NA	B	602	1/1	0.60	0.30	71,71,71,71	0
4	CL	A	610	1/1	0.76	0.19	78,78,78,78	0
4	CL	A	609	1/1	0.80	0.15	74,74,74,74	0
4	CL	B	610	1/1	0.84	0.15	71,71,71,71	0
3	NA	A	602	1/1	0.87	0.09	50,50,50,50	0
4	CL	B	608	1/1	0.90	0.18	72,72,72,72	0
4	CL	B	611	1/1	0.90	0.19	90,90,90,90	0
4	CL	A	604	1/1	0.91	0.14	68,68,68,68	0
4	CL	A	607	1/1	0.93	0.12	72,72,72,72	0
4	CL	A	608	1/1	0.94	0.11	62,62,62,62	0
4	CL	B	606	1/1	0.95	0.07	45,45,45,45	0
4	CL	B	609	1/1	0.95	0.09	51,51,51,51	0
2	A1A1S	A	601	36/36	0.96	0.09	27,43,65,76	1
4	CL	A	605	1/1	0.96	0.10	49,49,49,49	0
4	CL	A	606	1/1	0.96	0.07	47,47,47,47	0

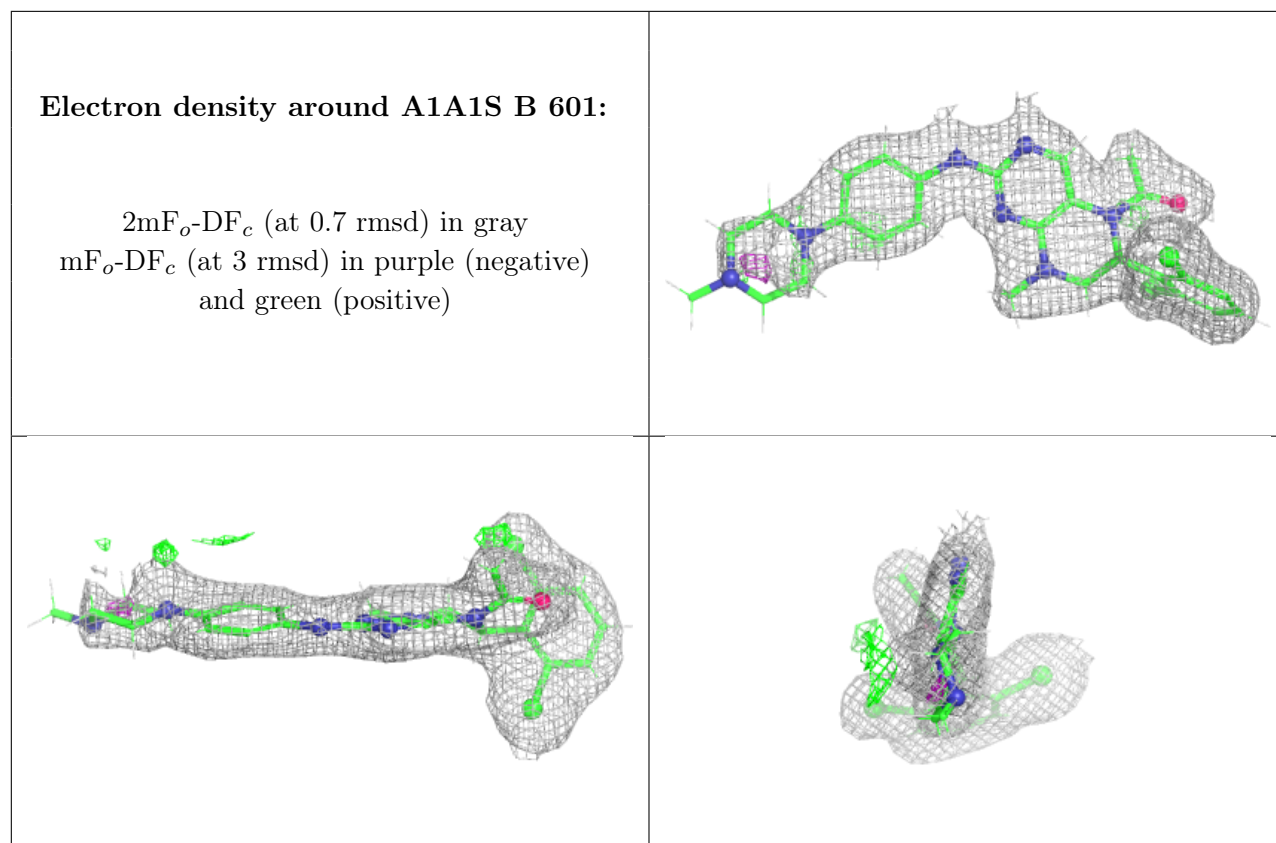
Continued on next page...

Continued from previous page...

Mol	Type	Chain	Res	Atoms	RSCC	RSR	B-factors(\AA^2)	Q<0.9
2	A1A1S	B	601	36/36	0.96	0.09	26,42,90,93	1
4	CL	A	603	1/1	0.97	0.10	41,41,41,41	0
4	CL	B	607	1/1	0.97	0.10	57,57,57,57	0
4	CL	B	604	1/1	0.97	0.14	50,50,50,50	0
4	CL	B	603	1/1	0.98	0.06	46,46,46,46	0
4	CL	B	605	1/1	0.98	0.06	55,55,55,55	0

The following is a graphical depiction of the model fit to experimental electron density of all instances of the Ligand of Interest. In addition, ligands with molecular weight > 250 and outliers as shown on the geometry validation Tables will also be included. Each fit is shown from different orientation to approximate a three-dimensional view.





6.5 Other polymers [i](#)

There are no such residues in this entry.