



wwPDB EM Validation Summary Report ⓘ

Mar 24, 2026 – 06:47 AM UTC

PDB ID : 9COG / pdb_00009cog
EMDB ID : EMD-45779
Title : Structure of the full-length Measles virus Fusion protein E170G E455G in the pre-fusion conformation bound by [FIP-HRC]2-PEG11 in amphipol
Authors : Zyla, D.; Saphire, E.O.
Deposited on : 2024-07-16
Resolution : 2.65 Å(reported)
Based on initial model : 5YXW

This is a wwPDB EM Validation Summary Report for a publicly released PDB entry.

We welcome your comments at validation@mail.wwpdb.org

A user guide is available at

<https://www.wwpdb.org/validation/2017/EMValidationReportHelp>

with specific help available everywhere you see the ⓘ symbol.

The types of validation reports are described at

<http://www.wwpdb.org/validation/2017/FAQs#types>.

The following versions of software and data (see [references ⓘ](#)) were used in the production of this report:

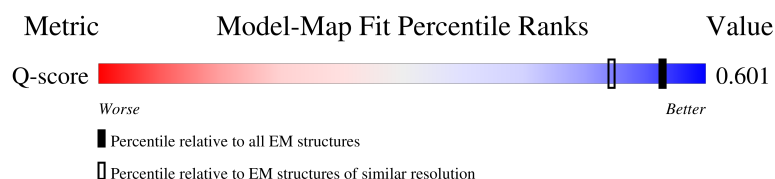
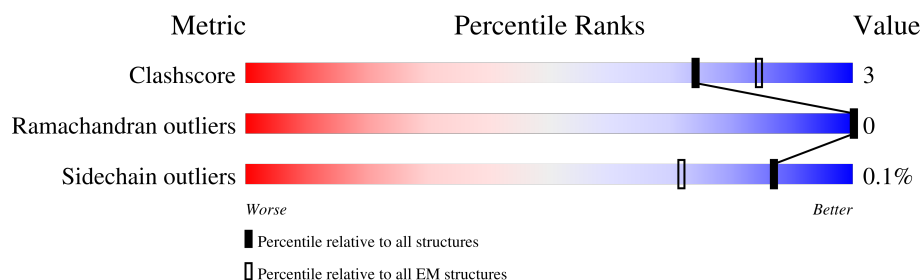
EMDB validation analysis : 0.0.1.dev132
Mogul : 2022.3.0, CSD as543be (2022)
MolProbity : 4-5-2 with Phenix2.0
Percentile statistics : 20250101.v01 (using entries in the PDB archive January 1st 2025)
EM percentile statistics : 202505.v01 (Using data in the EMDB archive up until May 2025)
MapQ : 1.9.13
Ideal geometry (proteins) : Engh & Huber (2001)
Ideal geometry (DNA, RNA) : Parkinson et al. (1996)
Validation Pipeline (wwPDB-VP) : 2.49

1 Overall quality at a glance

The following experimental techniques were used to determine the structure:
ELECTRON MICROSCOPY

The reported resolution of this entry is 2.65 Å.

Percentile scores (ranging between 0-100) for global validation metrics of the entry are shown in the following graphic. The table shows the number of entries on which the scores are based.










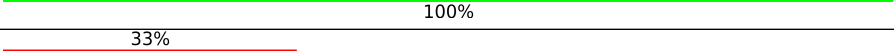
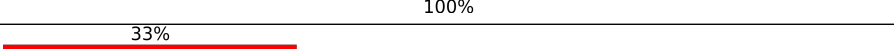
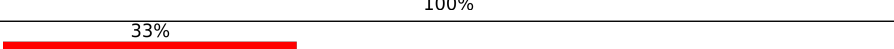
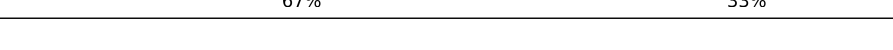
Metric	Whole archive (#Entries)	EM structures (#Entries)	Similar EM resolution (#Entries, resolution range(Å))
Clashscore	229148	23984	-
Ramachandran outliers	224038	23583	-
Sidechain outliers	223484	23102	-
Q-score	-	25397	9050 (2.15 - 3.15)

The table below summarises the geometric issues observed across the polymeric chains and their fit to the map. The red, orange, yellow and green segments of the bar indicate the fraction of residues that contain outliers for ≥ 3 , 2, 1 and 0 types of geometric quality criteria respectively. A grey segment represents the fraction of residues that are not modelled. The numeric value for each fraction is indicated below the corresponding segment, with a dot representing fractions $\leq 5\%$. The upper red bar (where present) indicates the fraction of residues that have poor fit to the EM map (all-atom inclusion $< 40\%$). The numeric value is given above the bar.

Mol	Chain	Length	Quality of chain
1	A	112	
1	C	112	
1	E	112	
2	B	472	

Continued on next page...

Continued from previous page...

Mol	Chain	Length	Quality of chain
2	D	472	
2	F	472	
3	M	4	
3	N	4	
3	O	4	
4	G	2	
4	I	2	
4	K	2	
5	H	3	
5	J	3	
5	L	3	

2 Entry composition

There are 7 unique types of molecules in this entry. The entry contains 10688 atoms, of which 0 are hydrogens and 0 are deuteriums.

In the tables below, the AltConf column contains the number of residues with at least one atom in alternate conformation and the Trace column contains the number of residues modelled with at most 2 atoms.

- Molecule 1 is a protein called Fusion glycoprotein F2.

Mol	Chain	Residues	Atoms					AltConf	Trace
1	A	80	Total	C	N	O	S	0	0
			630	395	119	112	4		
1	C	80	Total	C	N	O	S	0	0
			630	395	119	112	4		
1	E	80	Total	C	N	O	S	0	0
			630	395	119	112	4		

- Molecule 2 is a protein called Fusion glycoprotein F1.

Mol	Chain	Residues	Atoms					AltConf	Trace
2	B	372	Total	C	N	O	S	0	0
			2800	1767	473	546	14		
2	D	372	Total	C	N	O	S	0	0
			2800	1767	473	546	14		
2	F	372	Total	C	N	O	S	0	0
			2800	1767	473	546	14		

There are 108 discrepancies between the modelled and reference sequences:

Chain	Residue	Modelled	Actual	Comment	Reference
B	170	GLY	GLU	engineered mutation	UNP Q786F3
B	455	GLY	GLU	engineered mutation	UNP Q786F3
B	551	GLY	-	expression tag	UNP Q786F3
B	552	GLY	-	expression tag	UNP Q786F3
B	553	GLY	-	expression tag	UNP Q786F3
B	554	SER	-	expression tag	UNP Q786F3
B	555	GLY	-	expression tag	UNP Q786F3
B	556	GLY	-	expression tag	UNP Q786F3
B	557	TRP	-	expression tag	UNP Q786F3
B	558	SER	-	expression tag	UNP Q786F3
B	559	HIS	-	expression tag	UNP Q786F3
B	560	PRO	-	expression tag	UNP Q786F3
B	561	GLN	-	expression tag	UNP Q786F3

Continued on next page...

Continued from previous page...

Chain	Residue	Modelled	Actual	Comment	Reference
B	562	PHE	-	expression tag	UNP Q786F3
B	563	GLU	-	expression tag	UNP Q786F3
B	564	LYS	-	expression tag	UNP Q786F3
B	565	GLY	-	expression tag	UNP Q786F3
B	566	GLY	-	expression tag	UNP Q786F3
B	567	GLY	-	expression tag	UNP Q786F3
B	568	SER	-	expression tag	UNP Q786F3
B	569	GLY	-	expression tag	UNP Q786F3
B	570	GLY	-	expression tag	UNP Q786F3
B	571	GLY	-	expression tag	UNP Q786F3
B	572	SER	-	expression tag	UNP Q786F3
B	573	GLY	-	expression tag	UNP Q786F3
B	574	GLY	-	expression tag	UNP Q786F3
B	575	GLY	-	expression tag	UNP Q786F3
B	576	SER	-	expression tag	UNP Q786F3
B	577	TRP	-	expression tag	UNP Q786F3
B	578	SER	-	expression tag	UNP Q786F3
B	579	HIS	-	expression tag	UNP Q786F3
B	580	PRO	-	expression tag	UNP Q786F3
B	581	GLN	-	expression tag	UNP Q786F3
B	582	PHE	-	expression tag	UNP Q786F3
B	583	GLU	-	expression tag	UNP Q786F3
B	584	LYS	-	expression tag	UNP Q786F3
D	170	GLY	GLU	engineered mutation	UNP Q786F3
D	455	GLY	GLU	engineered mutation	UNP Q786F3
D	551	GLY	-	expression tag	UNP Q786F3
D	552	GLY	-	expression tag	UNP Q786F3
D	553	GLY	-	expression tag	UNP Q786F3
D	554	SER	-	expression tag	UNP Q786F3
D	555	GLY	-	expression tag	UNP Q786F3
D	556	GLY	-	expression tag	UNP Q786F3
D	557	TRP	-	expression tag	UNP Q786F3
D	558	SER	-	expression tag	UNP Q786F3
D	559	HIS	-	expression tag	UNP Q786F3
D	560	PRO	-	expression tag	UNP Q786F3
D	561	GLN	-	expression tag	UNP Q786F3
D	562	PHE	-	expression tag	UNP Q786F3
D	563	GLU	-	expression tag	UNP Q786F3
D	564	LYS	-	expression tag	UNP Q786F3
D	565	GLY	-	expression tag	UNP Q786F3
D	566	GLY	-	expression tag	UNP Q786F3
D	567	GLY	-	expression tag	UNP Q786F3

Continued on next page...

Continued from previous page...

Chain	Residue	Modelled	Actual	Comment	Reference
D	568	SER	-	expression tag	UNP Q786F3
D	569	GLY	-	expression tag	UNP Q786F3
D	570	GLY	-	expression tag	UNP Q786F3
D	571	GLY	-	expression tag	UNP Q786F3
D	572	SER	-	expression tag	UNP Q786F3
D	573	GLY	-	expression tag	UNP Q786F3
D	574	GLY	-	expression tag	UNP Q786F3
D	575	GLY	-	expression tag	UNP Q786F3
D	576	SER	-	expression tag	UNP Q786F3
D	577	TRP	-	expression tag	UNP Q786F3
D	578	SER	-	expression tag	UNP Q786F3
D	579	HIS	-	expression tag	UNP Q786F3
D	580	PRO	-	expression tag	UNP Q786F3
D	581	GLN	-	expression tag	UNP Q786F3
D	582	PHE	-	expression tag	UNP Q786F3
D	583	GLU	-	expression tag	UNP Q786F3
D	584	LYS	-	expression tag	UNP Q786F3
F	170	GLY	GLU	engineered mutation	UNP Q786F3
F	455	GLY	GLU	engineered mutation	UNP Q786F3
F	551	GLY	-	expression tag	UNP Q786F3
F	552	GLY	-	expression tag	UNP Q786F3
F	553	GLY	-	expression tag	UNP Q786F3
F	554	SER	-	expression tag	UNP Q786F3
F	555	GLY	-	expression tag	UNP Q786F3
F	556	GLY	-	expression tag	UNP Q786F3
F	557	TRP	-	expression tag	UNP Q786F3
F	558	SER	-	expression tag	UNP Q786F3
F	559	HIS	-	expression tag	UNP Q786F3
F	560	PRO	-	expression tag	UNP Q786F3
F	561	GLN	-	expression tag	UNP Q786F3
F	562	PHE	-	expression tag	UNP Q786F3
F	563	GLU	-	expression tag	UNP Q786F3
F	564	LYS	-	expression tag	UNP Q786F3
F	565	GLY	-	expression tag	UNP Q786F3
F	566	GLY	-	expression tag	UNP Q786F3
F	567	GLY	-	expression tag	UNP Q786F3
F	568	SER	-	expression tag	UNP Q786F3
F	569	GLY	-	expression tag	UNP Q786F3
F	570	GLY	-	expression tag	UNP Q786F3
F	571	GLY	-	expression tag	UNP Q786F3
F	572	SER	-	expression tag	UNP Q786F3
F	573	GLY	-	expression tag	UNP Q786F3

Continued on next page...

Continued from previous page...

Chain	Residue	Modelled	Actual	Comment	Reference
F	574	GLY	-	expression tag	UNP Q786F3
F	575	GLY	-	expression tag	UNP Q786F3
F	576	SER	-	expression tag	UNP Q786F3
F	577	TRP	-	expression tag	UNP Q786F3
F	578	SER	-	expression tag	UNP Q786F3
F	579	HIS	-	expression tag	UNP Q786F3
F	580	PRO	-	expression tag	UNP Q786F3
F	581	GLN	-	expression tag	UNP Q786F3
F	582	PHE	-	expression tag	UNP Q786F3
F	583	GLU	-	expression tag	UNP Q786F3
F	584	LYS	-	expression tag	UNP Q786F3

- Molecule 3 is a protein called [FIP-HRC]2-PEG11.

Mol	Chain	Residues	Atoms				AltConf	Trace
3	M	4	Total	C	N	O	0	0
			37	28	3	6		
3	N	4	Total	C	N	O	0	0
			37	28	3	6		
3	O	4	Total	C	N	O	0	0
			37	28	3	6		

- Molecule 4 is an oligosaccharide called 2-acetamido-2-deoxy-beta-D-glucopyranose-(1-4)-2-acetamido-2-deoxy-beta-D-glucopyranose.



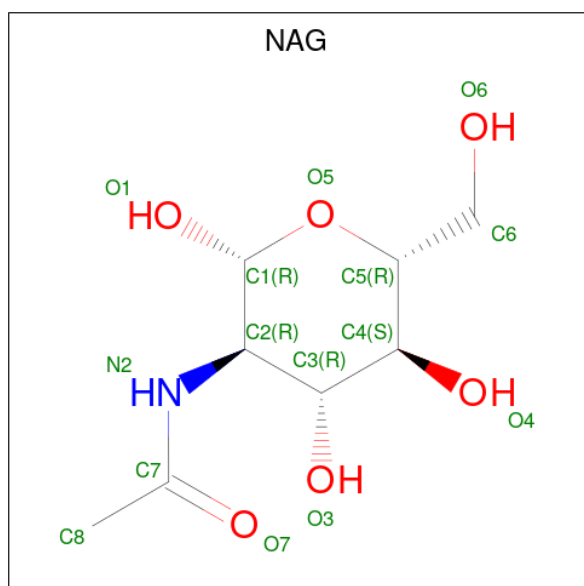
Mol	Chain	Residues	Atoms				AltConf	Trace
4	G	2	Total	C	N	O	0	0
			28	16	2	10		
4	I	2	Total	C	N	O	0	0
			28	16	2	10		
4	K	2	Total	C	N	O	0	0
			28	16	2	10		

- Molecule 5 is an oligosaccharide called beta-D-mannopyranose-(1-4)-2-acetamido-2-deoxy-beta-D-glucopyranose-(1-4)-2-acetamido-2-deoxy-beta-D-glucopyranose.



Mol	Chain	Residues	Atoms				AltConf	Trace
5	H	3	Total	C	N	O	0	0
			39	22	2	15		
5	J	3	Total	C	N	O	0	0
			39	22	2	15		
5	L	3	Total	C	N	O	0	0
			39	22	2	15		

- Molecule 6 is 2-acetamido-2-deoxy-beta-D-glucopyranose (CCD ID: NAG) (formula: $C_8H_{15}NO_6$).



Mol	Chain	Residues	Atoms				AltConf
6	A	1	Total	C	N	O	0
			14	8	1	5	
6	C	1	Total	C	N	O	0
			14	8	1	5	
6	E	1	Total	C	N	O	0
			14	8	1	5	

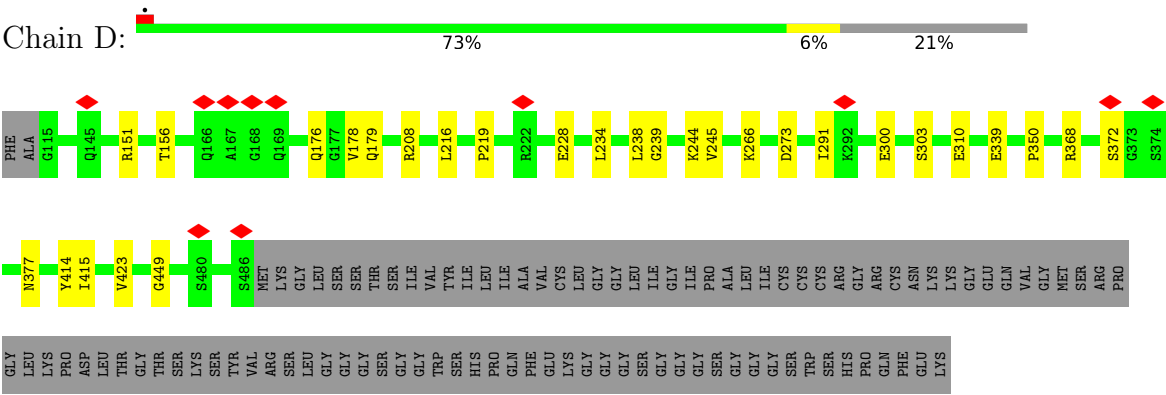
- Molecule 7 is water.

Mol	Chain	Residues	Atoms		AltConf
7	A	3	Total	O	0
			3	3	

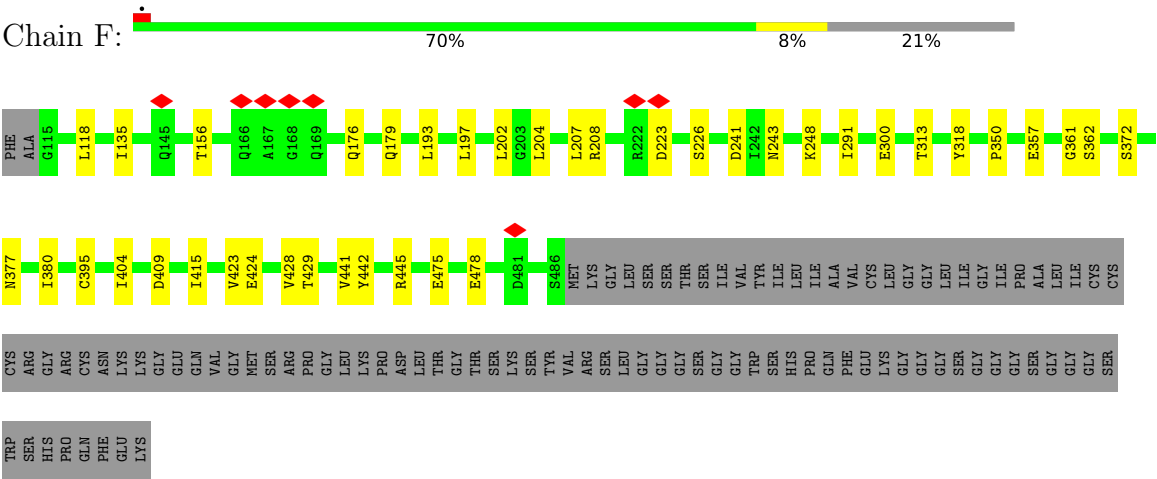
Continued on next page...

Continued from previous page...

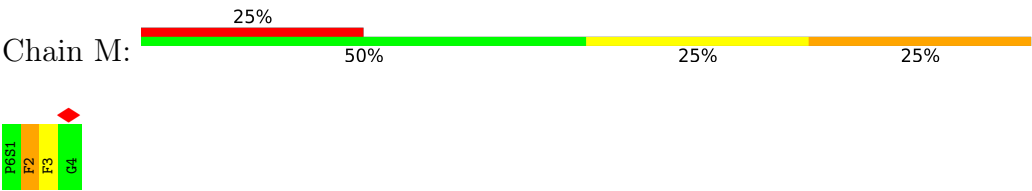
Mol	Chain	Residues	Atoms		AltConf
7	B	11	Total 11	O 11	0
7	C	3	Total 3	O 3	0
7	D	12	Total 12	O 12	0
7	E	1	Total 1	O 1	0
7	F	14	Total 14	O 14	0



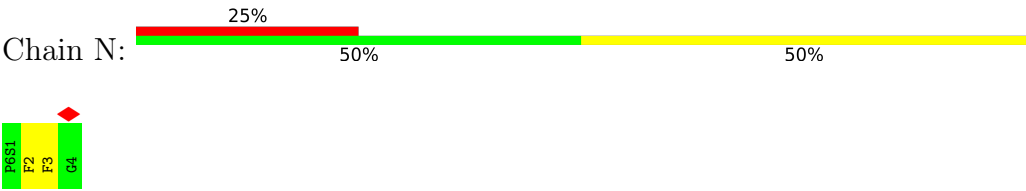
• Molecule 2: Fusion glycoprotein F1



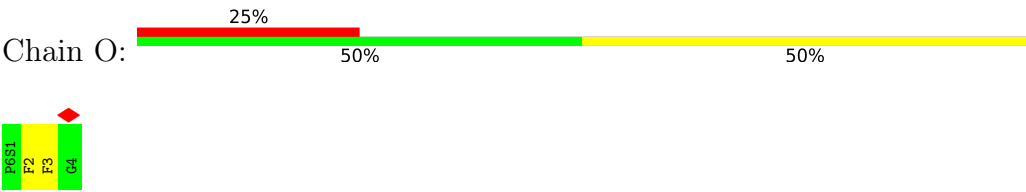
• Molecule 3: [FIP-HRC]2-PEG11



• Molecule 3: [FIP-HRC]2-PEG11



• Molecule 3: [FIP-HRC]2-PEG11



- Molecule 4: 2-acetamido-2-deoxy-beta-D-glucopyranose-(1-4)-2-acetamido-2-deoxy-beta-D-glucopyranose



- Molecule 4: 2-acetamido-2-deoxy-beta-D-glucopyranose-(1-4)-2-acetamido-2-deoxy-beta-D-glucopyranose



- Molecule 4: 2-acetamido-2-deoxy-beta-D-glucopyranose-(1-4)-2-acetamido-2-deoxy-beta-D-glucopyranose



- Molecule 5: beta-D-mannopyranose-(1-4)-2-acetamido-2-deoxy-beta-D-glucopyranose-(1-4)-2-acetamido-2-deoxy-beta-D-glucopyranose



- Molecule 5: beta-D-mannopyranose-(1-4)-2-acetamido-2-deoxy-beta-D-glucopyranose-(1-4)-2-acetamido-2-deoxy-beta-D-glucopyranose



- Molecule 5: beta-D-mannopyranose-(1-4)-2-acetamido-2-deoxy-beta-D-glucopyranose-(1-4)-2-acetamido-2-deoxy-beta-D-glucopyranose





4 Experimental information

Property	Value	Source
EM reconstruction method	SINGLE PARTICLE	Depositor
Imposed symmetry	POINT, Not provided	
Number of particles used	326000	Depositor
Resolution determination method	FSC 0.143 CUT-OFF	Depositor
CTF correction method	PHASE FLIPPING AND AMPLITUDE CORRECTION	Depositor
Microscope	FEI TITAN KRIOS	Depositor
Voltage (kV)	300	Depositor
Electron dose ($e^-/\text{\AA}^2$)	50	Depositor
Minimum defocus (nm)	1000	Depositor
Maximum defocus (nm)	2500	Depositor
Magnification	Not provided	
Image detector	GATAN K3 (6k x 4k)	Depositor
Maximum map value	2.673	Depositor
Minimum map value	-1.625	Depositor
Average map value	0.000	Depositor
Map value standard deviation	0.052	Depositor
Recommended contour level	0.427	Depositor
Map size (\AA)	396.0, 396.0, 396.0	wwPDB
Map dimensions	400, 400, 400	wwPDB
Map angles ($^\circ$)	90.0, 90.0, 90.0	wwPDB
Pixel spacing (\AA)	0.99, 0.99, 0.99	Depositor

5 Model quality

5.1 Standard geometry

Bond lengths and bond angles in the following residue types are not validated in this section: NAG, P6S, BMA

The Z score for a bond length (or angle) is the number of standard deviations the observed value is removed from the expected value. A bond length (or angle) with $|Z| > 5$ is considered an outlier worth inspection. RMSZ is the root-mean-square of all Z scores of the bond lengths (or angles).

Mol	Chain	Bond lengths		Bond angles	
		RMSZ	$\# Z > 5$	RMSZ	$\# Z > 5$
1	A	0.08	0/638	0.25	0/863
1	C	0.07	0/638	0.22	0/863
1	E	0.08	0/638	0.23	0/863
2	B	0.08	0/2841	0.23	0/3859
2	D	0.07	0/2841	0.21	0/3859
2	F	0.07	0/2841	0.21	0/3859
3	M	2.73	2/28 (7.1%)	2.70	2/34 (5.9%)
3	N	3.08	3/28 (10.7%)	2.69	2/34 (5.9%)
3	O	3.21	3/28 (10.7%)	2.72	2/34 (5.9%)
All	All	0.28	8/10521 (0.1%)	0.32	6/14268 (0.0%)

The worst 5 of 8 bond length outliers are listed below:

Mol	Chain	Res	Type	Atoms	Z	Observed(Å)	Ideal(Å)
3	O	3	PHE	CA-CB	9.08	1.64	1.53
3	N	3	PHE	CA-CB	8.98	1.64	1.53
3	O	3	PHE	CA-C	6.98	1.61	1.52
3	O	2	PHE	C-N	6.83	1.43	1.33
3	N	3	PHE	CA-C	6.66	1.61	1.53

The worst 5 of 6 bond angle outliers are listed below:

Mol	Chain	Res	Type	Atoms	Z	Observed(°)	Ideal(°)
3	M	2	PHE	CA-CB-CG	9.58	123.38	113.80
3	O	2	PHE	CA-CB-CG	9.09	122.89	113.80
3	N	2	PHE	CA-CB-CG	8.97	122.77	113.80
3	O	3	PHE	CA-CB-CG	5.91	119.71	113.80
3	N	3	PHE	CA-CB-CG	5.77	119.57	113.80

There are no chirality outliers.

There are no planarity outliers.

5.2 Too-close contacts

In the following table, the Non-H and H(model) columns list the number of non-hydrogen atoms and hydrogen atoms in the chain respectively. The H(added) column lists the number of hydrogen atoms added and optimized by MolProbity. The Clashes column lists the number of clashes within the asymmetric unit, whereas Symm-Clashes lists symmetry-related clashes.

Mol	Chain	Non-H	H(model)	H(added)	Clashes	Symm-Clashes
1	A	630	0	662	5	0
1	C	630	0	662	2	0
1	E	630	0	662	8	0
2	B	2800	0	2830	24	0
2	D	2800	0	2830	20	0
2	F	2800	0	2830	29	0
3	M	37	0	20	0	0
3	N	37	0	20	0	0
3	O	37	0	20	0	0
4	G	28	0	25	1	0
4	I	28	0	25	0	0
4	K	28	0	25	0	0
5	H	39	0	34	1	0
5	J	39	0	34	1	0
5	L	39	0	34	2	0
6	A	14	0	13	0	0
6	C	14	0	13	0	0
6	E	14	0	13	0	0
7	A	3	0	0	0	0
7	B	11	0	0	0	0
7	C	3	0	0	0	0
7	D	12	0	0	0	0
7	E	1	0	0	0	0
7	F	14	0	0	1	0
All	All	10688	0	10752	69	0

The all-atom clashscore is defined as the number of clashes found per 1000 atoms (including hydrogen atoms). The all-atom clashscore for this structure is 3.

The worst 5 of 69 close contacts within the same asymmetric unit are listed below, sorted by their clash magnitude.

Atom-1	Atom-2	Interatomic distance (Å)	Clash overlap (Å)
2:B:261:GLU:HG3	2:D:219:PRO:HG2	1.72	0.71

Continued on next page...

Continued from previous page...

Atom-1	Atom-2	Interatomic distance (Å)	Clash overlap (Å)
2:B:222:ARG:NH2	2:F:318:TYR:OH	2.24	0.71
2:B:471:GLU:HA	2:B:474:LYS:HE2	1.74	0.68
2:B:350:PRO:HD3	2:F:372:SER:HA	1.79	0.65
2:D:372:SER:HA	2:F:350:PRO:HD3	1.77	0.65

There are no symmetry-related clashes.

5.3 Torsion angles [i](#)

5.3.1 Protein backbone [i](#)

In the following table, the Percentiles column shows the percent Ramachandran outliers of the chain as a percentile score with respect to all PDB entries followed by that with respect to all EM entries.

The Analysed column shows the number of residues for which the backbone conformation was analysed, and the total number of residues.

Mol	Chain	Analysed	Favoured	Allowed	Outliers	Percentiles	
1	A	78/112 (70%)	76 (97%)	2 (3%)	0	100	100
1	C	78/112 (70%)	77 (99%)	1 (1%)	0	100	100
1	E	78/112 (70%)	76 (97%)	2 (3%)	0	100	100
2	B	370/472 (78%)	365 (99%)	5 (1%)	0	100	100
2	D	370/472 (78%)	364 (98%)	6 (2%)	0	100	100
2	F	370/472 (78%)	363 (98%)	7 (2%)	0	100	100
3	M	1/4 (25%)	1 (100%)	0	0	100	100
3	N	1/4 (25%)	1 (100%)	0	0	100	100
3	O	1/4 (25%)	1 (100%)	0	0	100	100
All	All	1347/1764 (76%)	1324 (98%)	23 (2%)	0	100	100

There are no Ramachandran outliers to report.

5.3.2 Protein sidechains [i](#)

In the following table, the Percentiles column shows the percent sidechain outliers of the chain as a percentile score with respect to all PDB entries followed by that with respect to all EM entries.

The Analysed column shows the number of residues for which the sidechain conformation was analysed, and the total number of residues.

Mol	Chain	Analysed	Rotameric	Outliers	Percentiles	
1	A	72/99 (73%)	72 (100%)	0	100	100
1	C	72/99 (73%)	72 (100%)	0	100	100
1	E	72/99 (73%)	72 (100%)	0	100	100
2	B	308/383 (80%)	308 (100%)	0	100	100
2	D	308/383 (80%)	308 (100%)	0	100	100
2	F	308/383 (80%)	308 (100%)	0	100	100
3	M	2/2 (100%)	1 (50%)	1 (50%)	0	0
3	N	2/2 (100%)	2 (100%)	0	100	100
3	O	2/2 (100%)	2 (100%)	0	100	100
All	All	1146/1452 (79%)	1145 (100%)	1 (0%)	87	95

All (1) residues with a non-rotameric sidechain are listed below:

Mol	Chain	Res	Type
3	M	2	PHE

Sometimes sidechains can be flipped to improve hydrogen bonding and reduce clashes. 5 of 12 such sidechains are listed below:

Mol	Chain	Res	Type
1	E	102	GLN
2	F	145	GLN
2	F	346	ASN
2	F	149	ASN
1	C	97	ASN

5.3.3 RNA ⓘ

There are no RNA molecules in this entry.

5.4 Non-standard residues in protein, DNA, RNA chains ⓘ

There are no non-standard protein/DNA/RNA residues in this entry.

5.5 Carbohydrates [i](#)

15 monosaccharides are modelled in this entry.

In the following table, the Counts columns list the number of bonds (or angles) for which Mogul statistics could be retrieved, the number of bonds (or angles) that are observed in the model and the number of bonds (or angles) that are defined in the Chemical Component Dictionary. The Link column lists molecule types, if any, to which the group is linked. The Z score for a bond length (or angle) is the number of standard deviations the observed value is removed from the expected value. A bond length (or angle) with $|Z| > 2$ is considered an outlier worth inspection. RMSZ is the root-mean-square of all Z scores of the bond lengths (or angles).

Mol	Type	Chain	Res	Link	Bond lengths			Bond angles		
					Counts	RMSZ	# Z > 2	Counts	RMSZ	# Z > 2
4	NAG	G	1	1,4	14,14,15	0.78	0	17,19,21	1.36	2 (11%)
4	NAG	G	2	4	14,14,15	0.71	0	17,19,21	0.87	0
5	NAG	H	1	1,5	14,14,15	0.73	0	17,19,21	1.28	1 (5%)
5	NAG	H	2	5	14,14,15	0.71	0	17,19,21	0.81	0
5	BMA	H	3	5	11,11,12	0.84	0	15,15,17	2.05	3 (20%)
4	NAG	I	1	1,4	14,14,15	0.74	0	17,19,21	0.96	1 (5%)
4	NAG	I	2	4	14,14,15	0.72	0	17,19,21	0.87	0
5	NAG	J	1	1,5	14,14,15	0.73	0	17,19,21	1.23	1 (5%)
5	NAG	J	2	5	14,14,15	0.71	0	17,19,21	0.79	0
5	BMA	J	3	5	11,11,12	0.84	0	15,15,17	2.05	3 (20%)
4	NAG	K	1	1,4	14,14,15	0.73	0	17,19,21	0.87	0
4	NAG	K	2	4	14,14,15	0.71	0	17,19,21	0.86	0
5	NAG	L	1	1,5	14,14,15	0.78	0	17,19,21	1.37	2 (11%)
5	NAG	L	2	5	14,14,15	0.71	0	17,19,21	0.84	0
5	BMA	L	3	5	11,11,12	0.84	0	15,15,17	2.05	3 (20%)

In the following table, the Chirals column lists the number of chiral outliers, the number of chiral centers analysed, the number of these observed in the model and the number defined in the Chemical Component Dictionary. Similar counts are reported in the Torsion and Rings columns. '-' means no outliers of that kind were identified.

Mol	Type	Chain	Res	Link	Chirals	Torsions	Rings
4	NAG	G	1	1,4	-	0/6/23/26	0/1/1/1
4	NAG	G	2	4	-	2/6/23/26	0/1/1/1
5	NAG	H	1	1,5	-	2/6/23/26	0/1/1/1
5	NAG	H	2	5	-	0/6/23/26	0/1/1/1
5	BMA	H	3	5	-	1/2/19/22	0/1/1/1
4	NAG	I	1	1,4	-	0/6/23/26	0/1/1/1
4	NAG	I	2	4	-	2/6/23/26	0/1/1/1

Continued on next page...

Continued from previous page...

Mol	Type	Chain	Res	Link	Chirals	Torsions	Rings
5	NAG	J	1	1,5	-	2/6/23/26	0/1/1/1
5	NAG	J	2	5	-	0/6/23/26	0/1/1/1
5	BMA	J	3	5	-	1/2/19/22	0/1/1/1
4	NAG	K	1	1,4	-	0/6/23/26	0/1/1/1
4	NAG	K	2	4	-	2/6/23/26	0/1/1/1
5	NAG	L	1	1,5	-	2/6/23/26	0/1/1/1
5	NAG	L	2	5	-	0/6/23/26	0/1/1/1
5	BMA	L	3	5	-	0/2/19/22	0/1/1/1

There are no bond length outliers.

The worst 5 of 16 bond angle outliers are listed below:

Mol	Chain	Res	Type	Atoms	Z	Observed(°)	Ideal(°)
5	L	3	BMA	C1-O5-C5	6.23	120.54	112.19
5	H	3	BMA	C1-O5-C5	6.22	120.53	112.19
5	J	3	BMA	C1-O5-C5	6.21	120.51	112.19
4	G	1	NAG	C1-O5-C5	4.01	117.56	112.19
5	H	1	NAG	C2-N2-C7	3.43	127.50	122.90

There are no chirality outliers.

5 of 14 torsion outliers are listed below:

Mol	Chain	Res	Type	Atoms
4	G	2	NAG	C8-C7-N2-C2
4	G	2	NAG	O7-C7-N2-C2
4	I	2	NAG	C8-C7-N2-C2
4	I	2	NAG	O7-C7-N2-C2
4	K	2	NAG	C8-C7-N2-C2

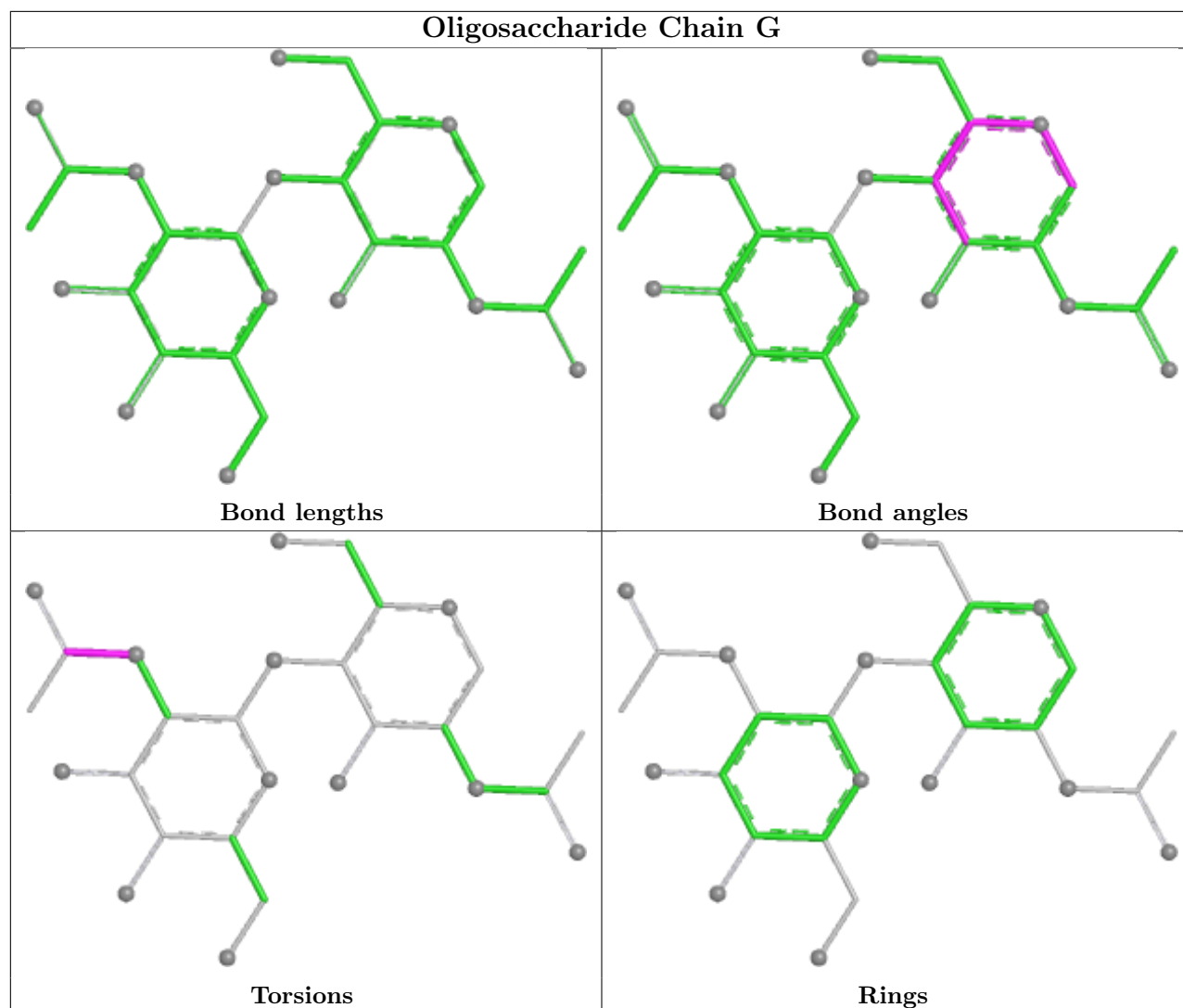
There are no ring outliers.

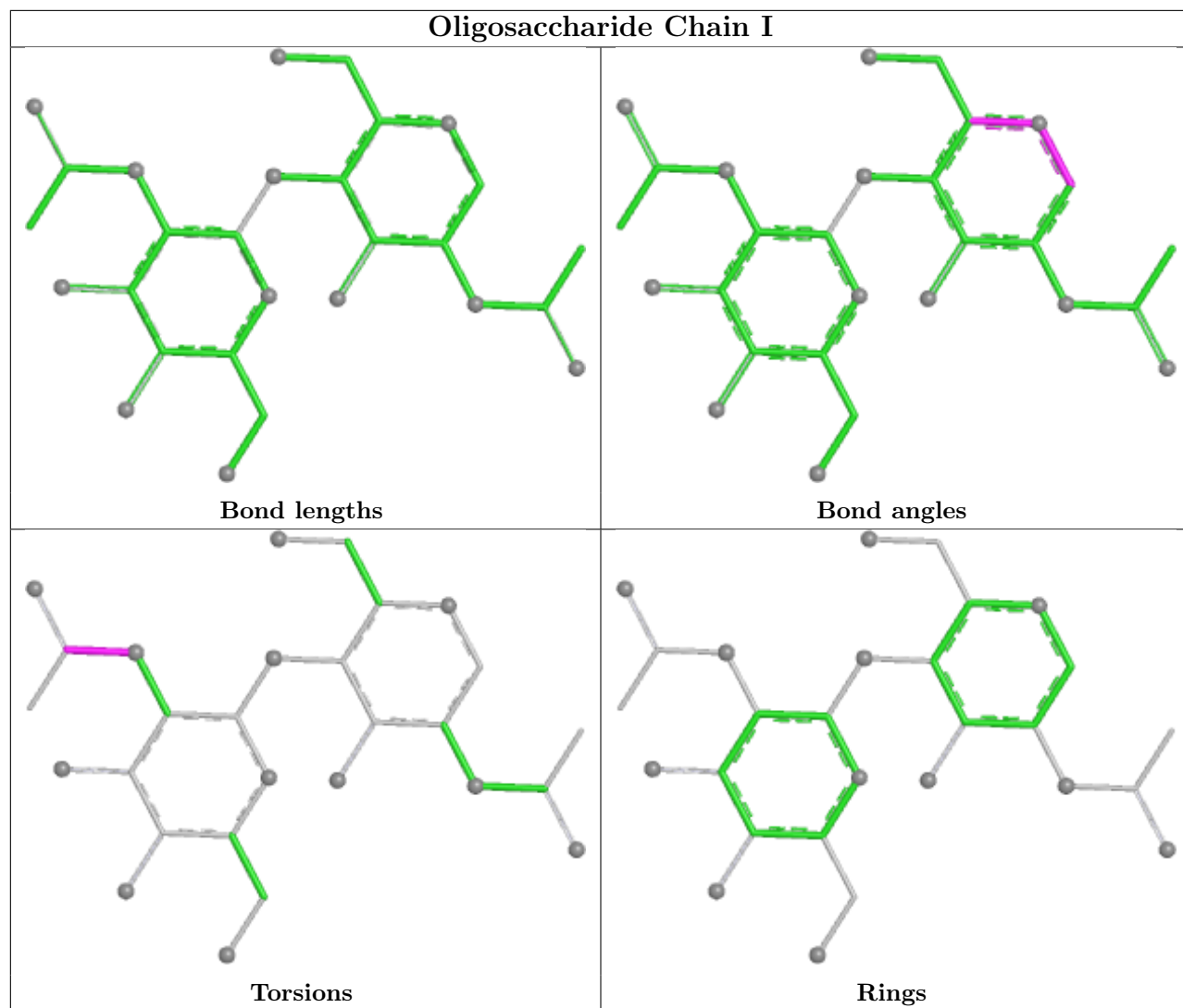
5 monomers are involved in 5 short contacts:

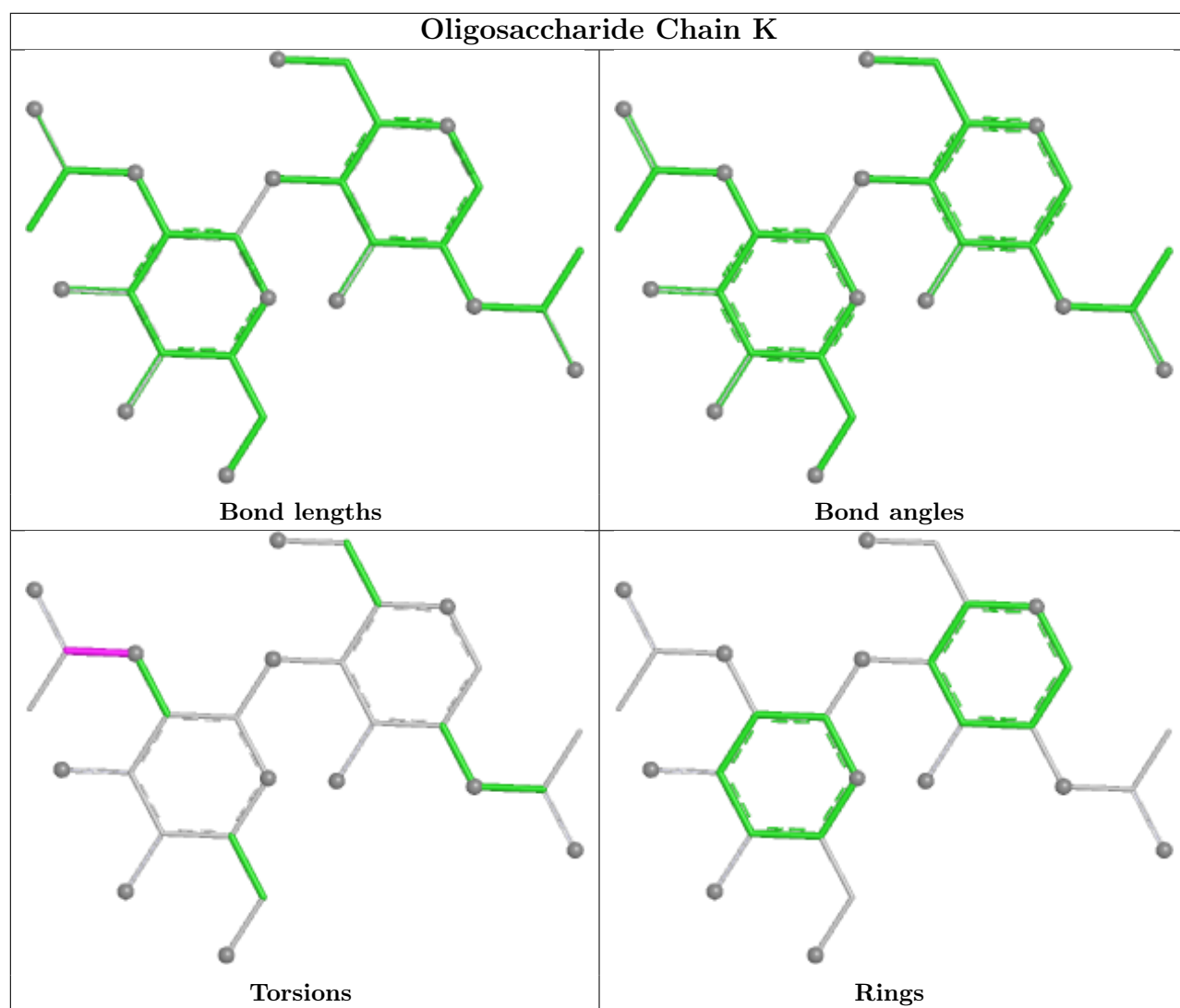
Mol	Chain	Res	Type	Clashes	Symm-Clashes
5	J	2	NAG	1	0
5	H	2	NAG	1	0
5	L	1	NAG	1	0
5	L	2	NAG	1	0
4	G	1	NAG	1	0

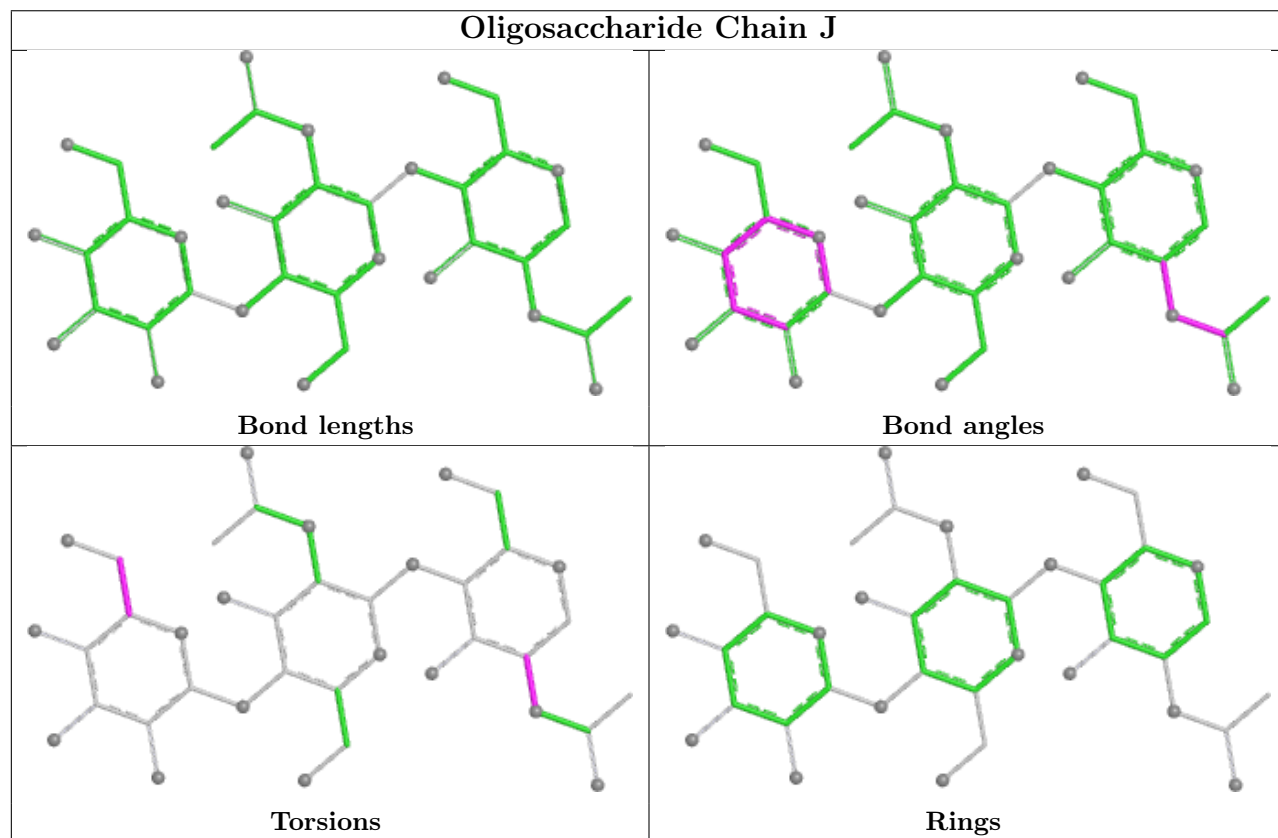
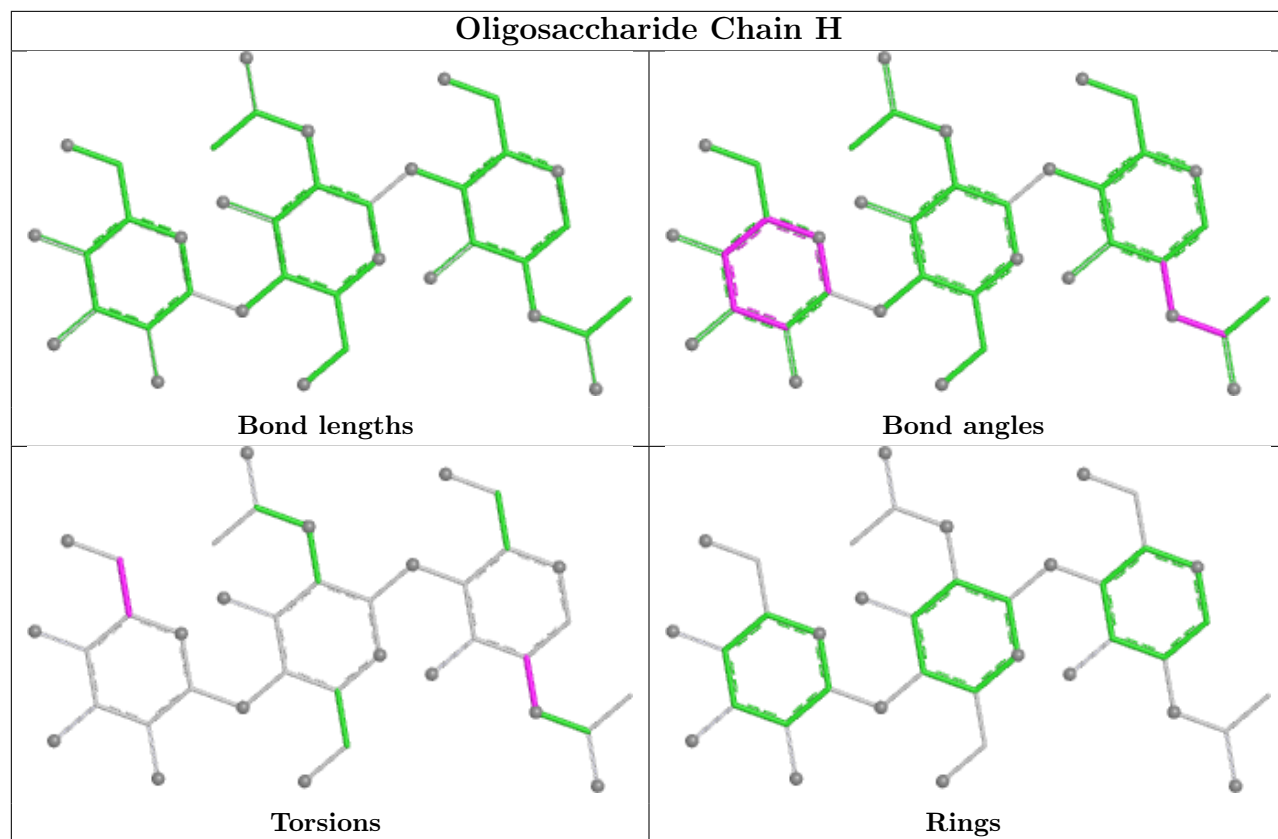
The following is a two-dimensional graphical depiction of Mogul quality analysis of bond lengths,

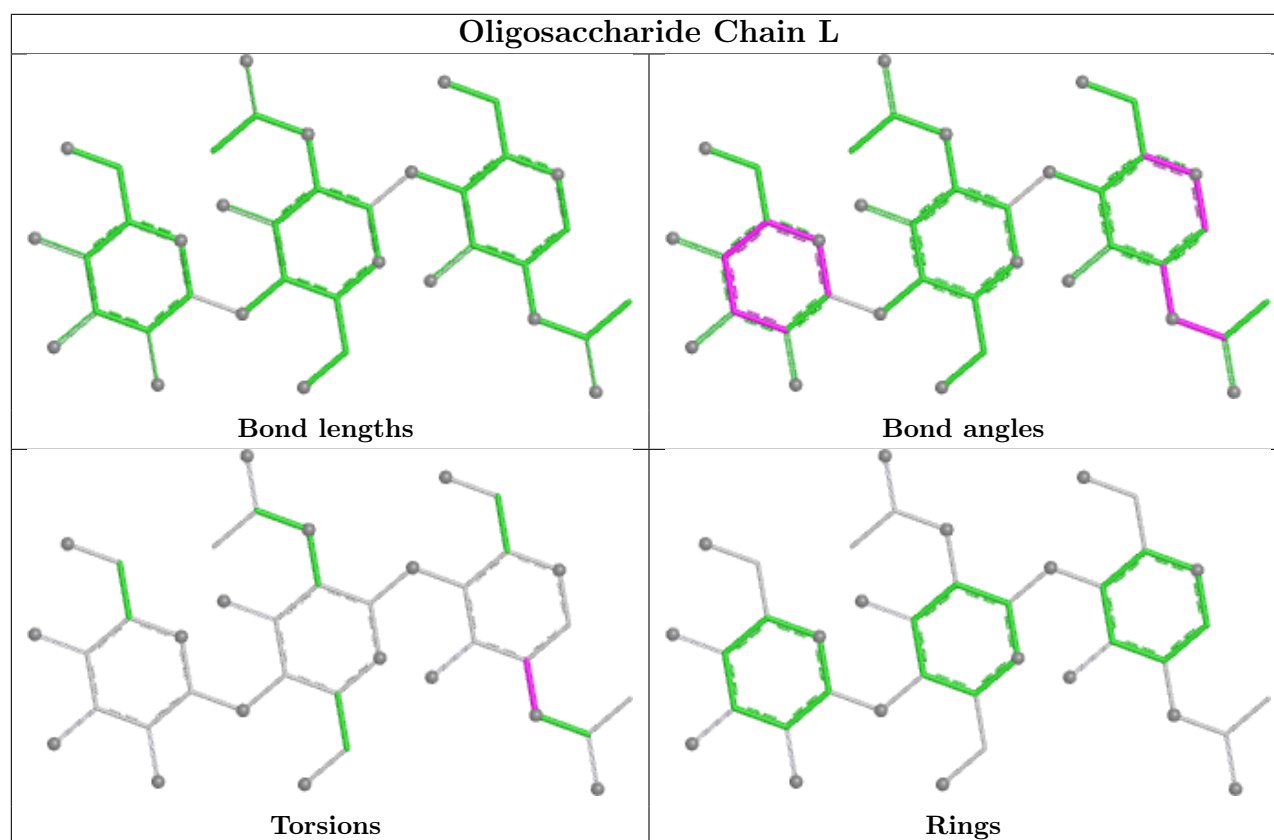
bond angles, torsion angles, and ring geometry for oligosaccharide.











5.6 Ligand geometry [i](#)

3 ligands are modelled in this entry.

In the following table, the Counts columns list the number of bonds (or angles) for which Mogul statistics could be retrieved, the number of bonds (or angles) that are observed in the model and the number of bonds (or angles) that are defined in the Chemical Component Dictionary. The Link column lists molecule types, if any, to which the group is linked. The Z score for a bond length (or angle) is the number of standard deviations the observed value is removed from the expected value. A bond length (or angle) with $|Z| > 2$ is considered an outlier worth inspection. RMSZ is the root-mean-square of all Z scores of the bond lengths (or angles).

Mol	Type	Chain	Res	Link	Bond lengths			Bond angles		
					Counts	RMSZ	$\# Z > 2$	Counts	RMSZ	$\# Z > 2$
6	NAG	C	601	1	14,14,15	0.71	0	17,19,21	0.82	0
6	NAG	A	601	1	14,14,15	0.71	0	17,19,21	0.85	0
6	NAG	E	601	1	14,14,15	0.71	0	17,19,21	0.77	0

In the following table, the Chirals column lists the number of chiral outliers, the number of chiral centers analysed, the number of these observed in the model and the number defined in the Chemical Component Dictionary. Similar counts are reported in the Torsion and Rings columns. '-' means no outliers of that kind were identified.

Mol	Type	Chain	Res	Link	Chirals	Torsions	Rings
6	NAG	C	601	1	-	0/6/23/26	0/1/1/1
6	NAG	A	601	1	-	3/6/23/26	0/1/1/1
6	NAG	E	601	1	-	0/6/23/26	0/1/1/1

There are no bond length outliers.

There are no bond angle outliers.

There are no chirality outliers.

All (3) torsion outliers are listed below:

Mol	Chain	Res	Type	Atoms
6	A	601	NAG	C8-C7-N2-C2
6	A	601	NAG	O7-C7-N2-C2
6	A	601	NAG	O5-C5-C6-O6

There are no ring outliers.

No monomer is involved in short contacts.

5.7 Other polymers [i](#)

There are no such residues in this entry.

5.8 Polymer linkage issues [i](#)

There are no chain breaks in this entry.

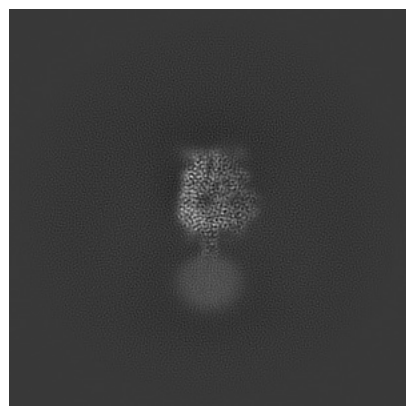
6 Map visualisation [i](#)

This section contains visualisations of the EMDB entry EMD-45779. These allow visual inspection of the internal detail of the map and identification of artifacts.

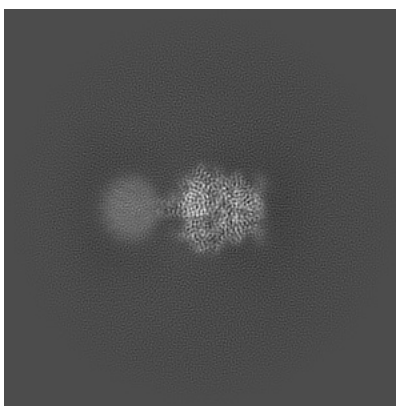
Images derived from a raw map, generated by summing the deposited half-maps, are presented below the corresponding image components of the primary map to allow further visual inspection and comparison with those of the primary map.

6.1 Orthogonal projections [i](#)

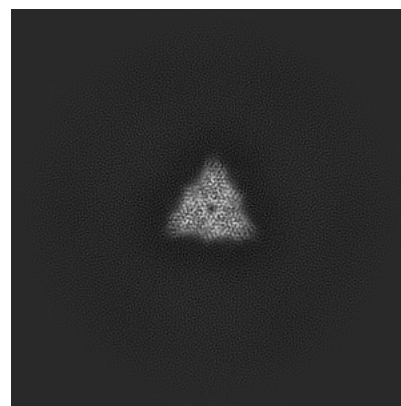
6.1.1 Primary map



X

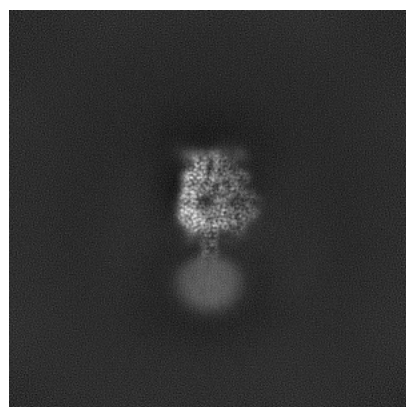


Y

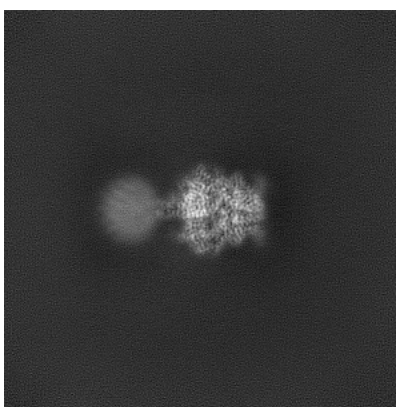


Z

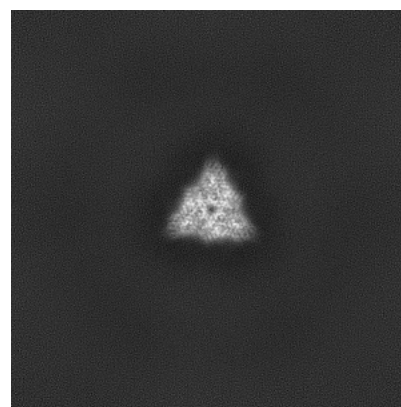
6.1.2 Raw map



X



Y

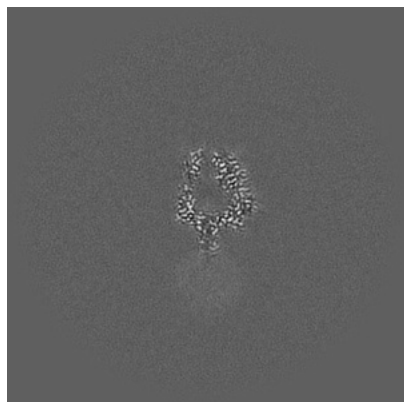


Z

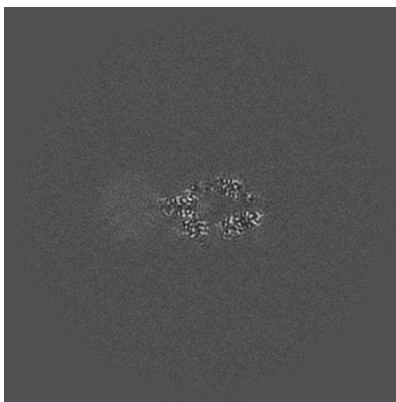
The images above show the map projected in three orthogonal directions.

6.2 Central slices [i](#)

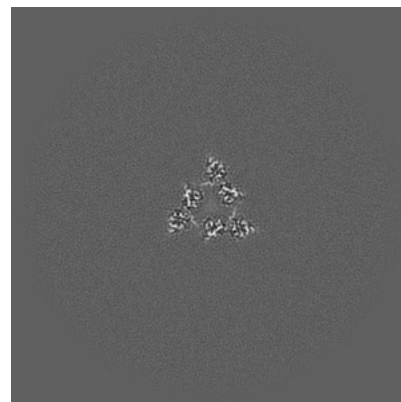
6.2.1 Primary map



X Index: 200

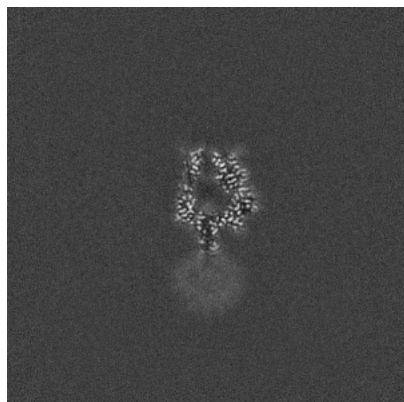


Y Index: 200



Z Index: 200

6.2.2 Raw map



X Index: 200



Y Index: 200

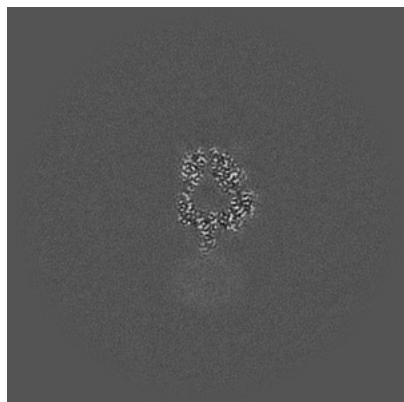


Z Index: 200

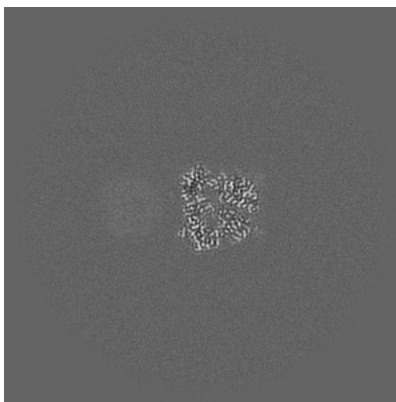
The images above show central slices of the map in three orthogonal directions.

6.3 Largest variance slices [i](#)

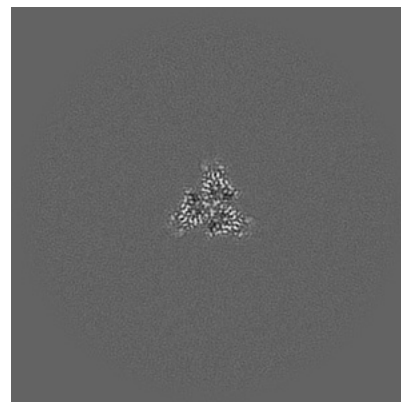
6.3.1 Primary map



X Index: 205

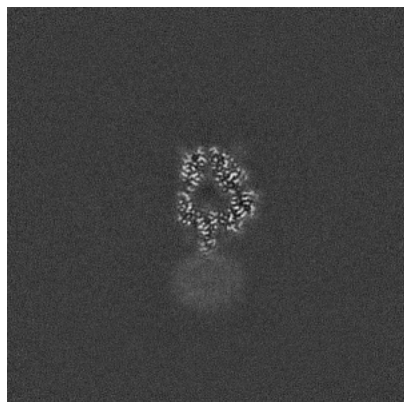


Y Index: 186

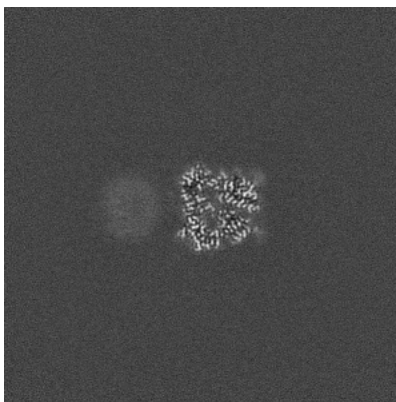


Z Index: 189

6.3.2 Raw map



X Index: 205



Y Index: 186

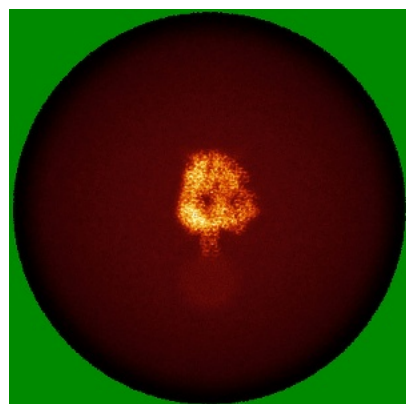


Z Index: 197

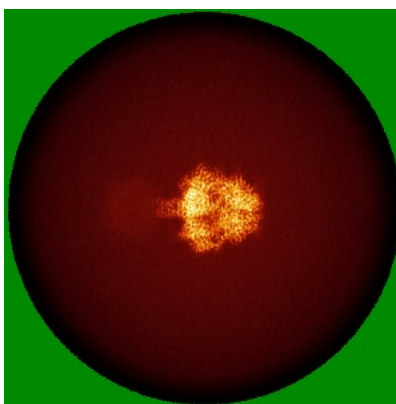
The images above show the largest variance slices of the map in three orthogonal directions.

6.4 Orthogonal standard-deviation projections (False-color) [i](#)

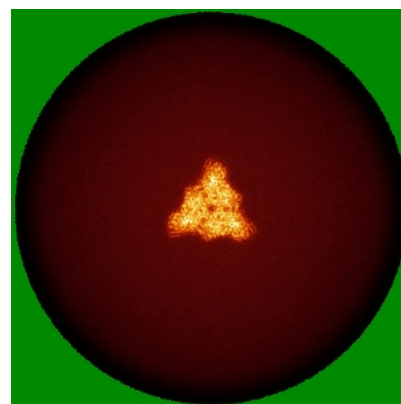
6.4.1 Primary map



X

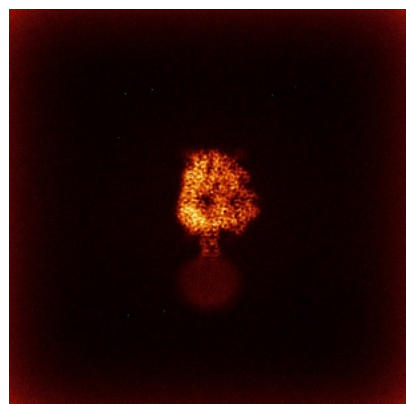


Y

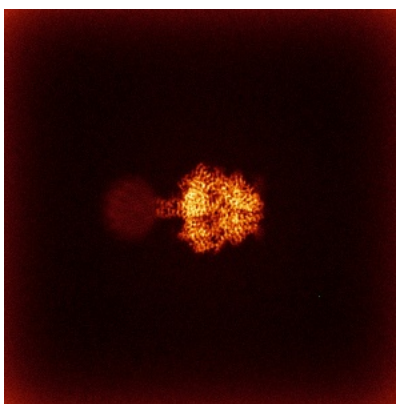


Z

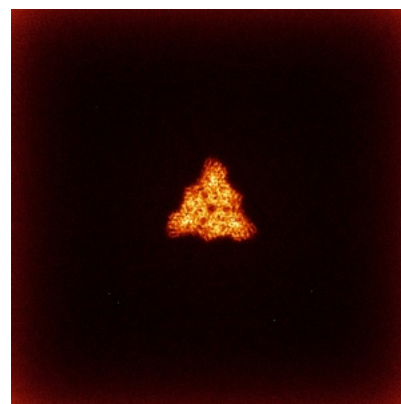
6.4.2 Raw map



X



Y

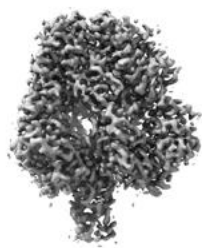


Z

The images above show the map standard deviation projections with false color in three orthogonal directions. Minimum values are shown in green, max in blue, and dark to light orange shades represent small to large values respectively.

6.5 Orthogonal surface views [i](#)

6.5.1 Primary map



X



Y



Z

The images above show the 3D surface view of the map at the recommended contour level 0.427. These images, in conjunction with the slice images, may facilitate assessment of whether an appropriate contour level has been provided.

6.5.2 Raw map



X



Y



Z

These images show the 3D surface of the raw map. The raw map's contour level was selected so that its surface encloses the same volume as the primary map does at its recommended contour level.

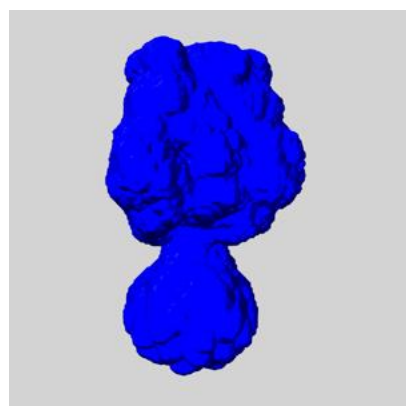
6.6 Mask visualisation [i](#)

This section shows the 3D surface view of the primary map at 50% transparency overlaid with the specified mask at 0% transparency

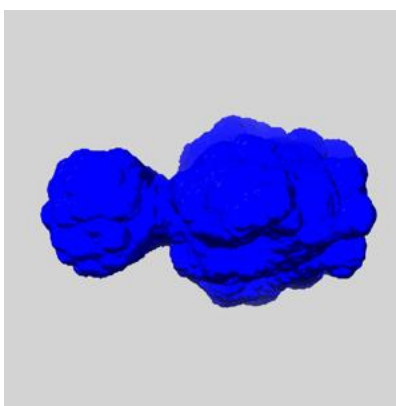
A mask typically either:

- Encompasses the whole structure
- Separates out a domain, a functional unit, a monomer or an area of interest from a larger structure

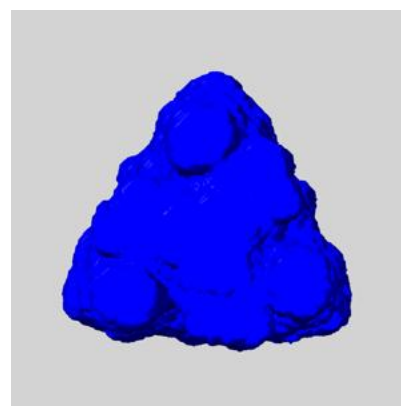
6.6.1 emd_45779_msk_1.map [i](#)



X



Y

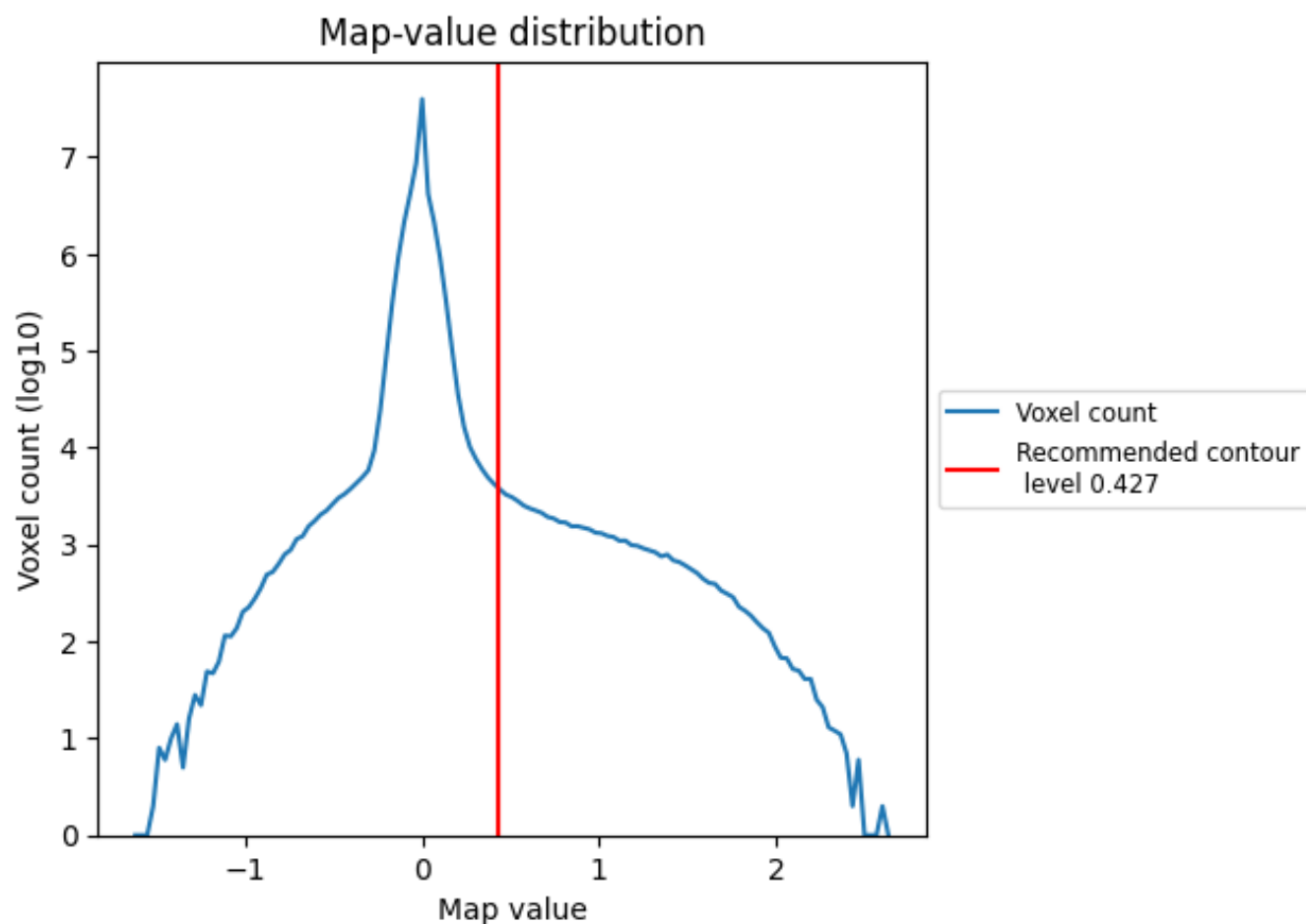


Z

7 Map analysis [i](#)

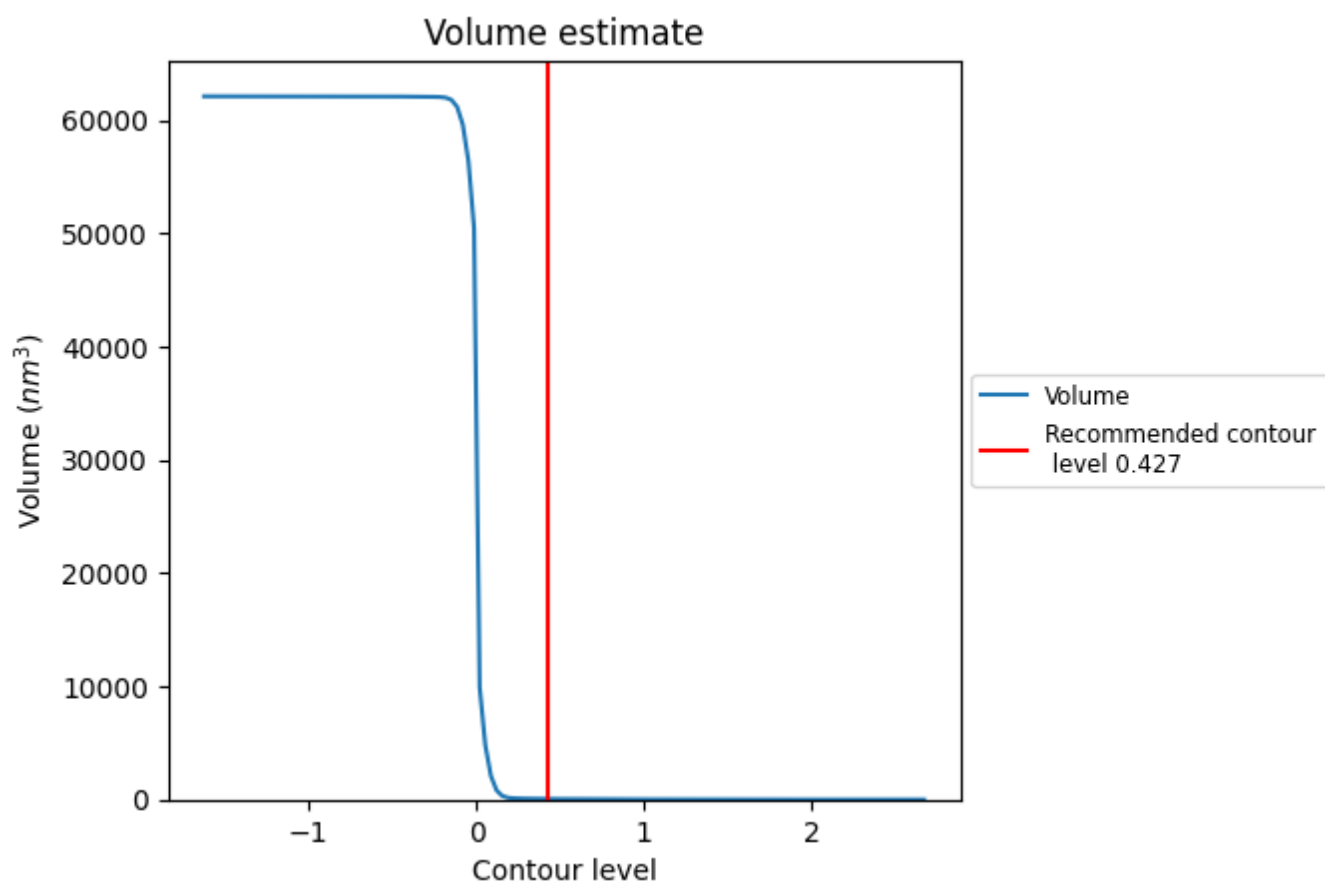
This section contains the results of statistical analysis of the map.

7.1 Map-value distribution [i](#)



The map-value distribution is plotted in 128 intervals along the x-axis. The y-axis is logarithmic. A spike in this graph at zero usually indicates that the volume has been masked.

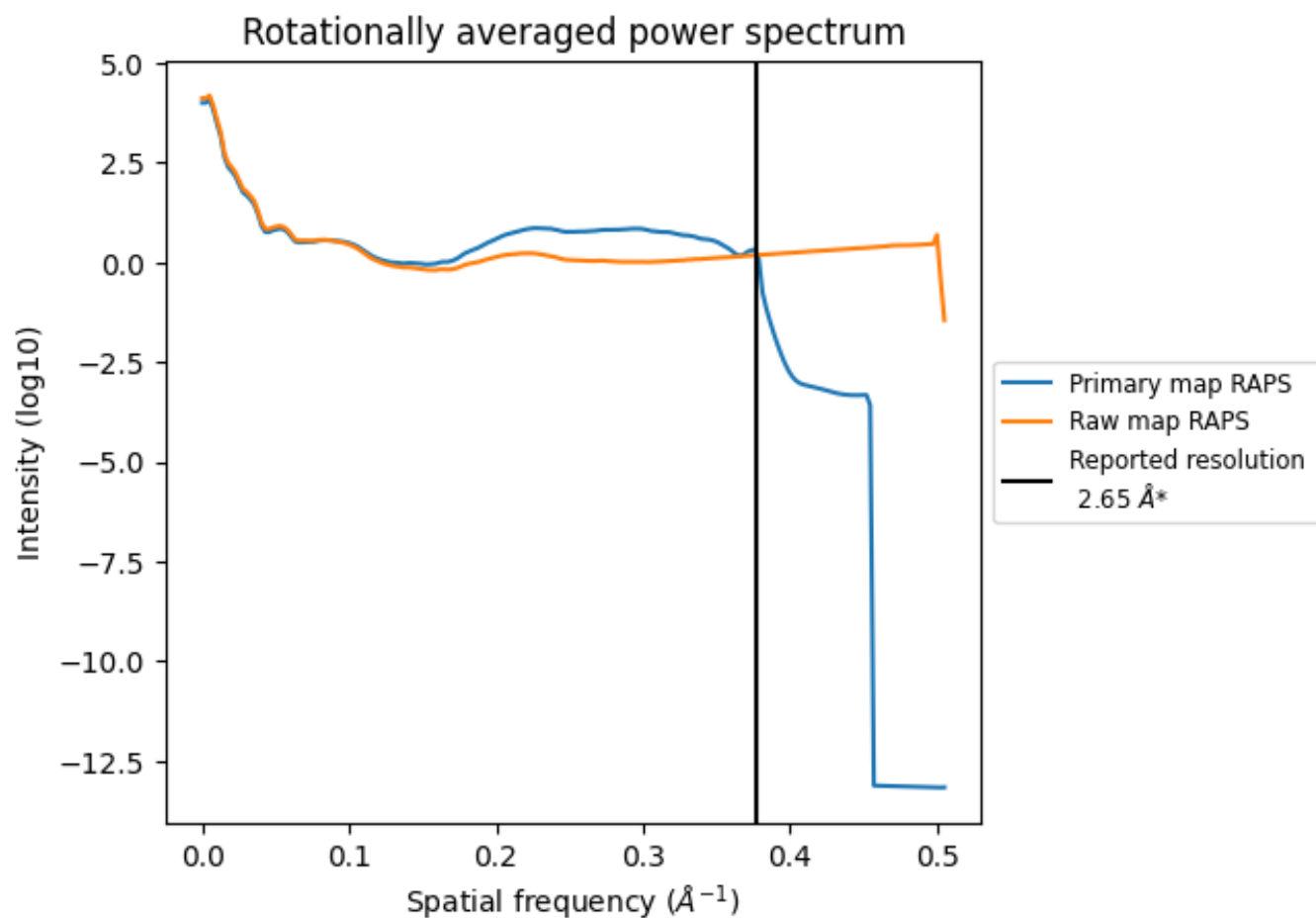
7.2 Volume estimate [i](#)



The volume at the recommended contour level is 55 nm³; this corresponds to an approximate mass of 50 kDa.

The volume estimate graph shows how the enclosed volume varies with the contour level. The recommended contour level is shown as a vertical line and the intersection between the line and the curve gives the volume of the enclosed surface at the given level.

7.3 Rotationally averaged power spectrum ⓘ

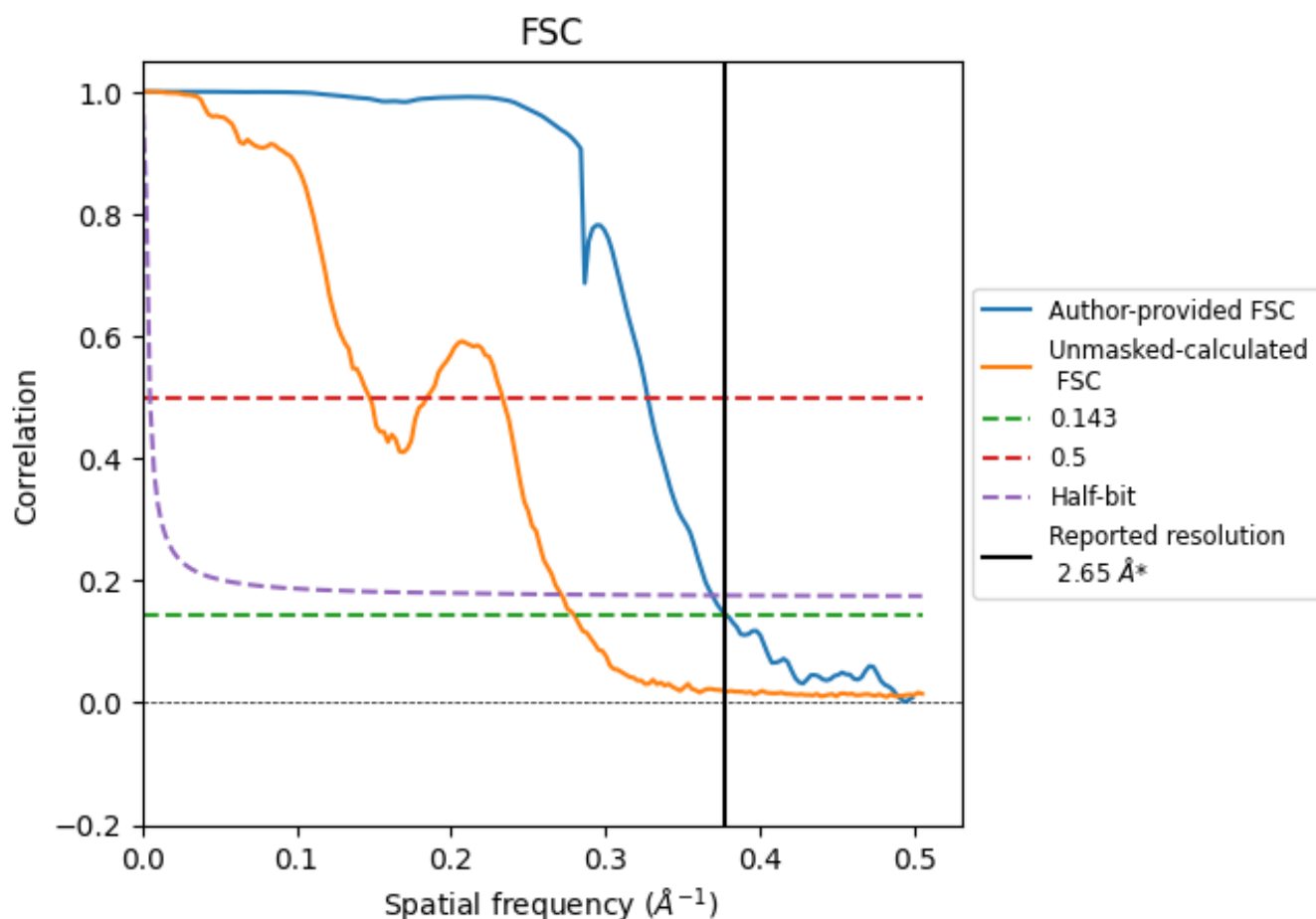


*Reported resolution corresponds to spatial frequency of 0.377 Å⁻¹

8 Fourier-Shell correlation [i](#)

Fourier-Shell Correlation (FSC) is the most commonly used method to estimate the resolution of single-particle and subtomogram-averaged maps. The shape of the curve depends on the imposed symmetry, mask and whether or not the two 3D reconstructions used were processed from a common reference. The reported resolution is shown as a black line. A curve is displayed for the half-bit criterion in addition to lines showing the 0.143 gold standard cut-off and 0.5 cut-off.

8.1 FSC [i](#)



*Reported resolution corresponds to spatial frequency of 0.377 Å⁻¹

8.2 Resolution estimates [i](#)

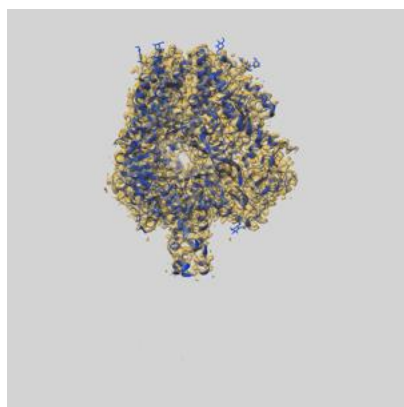
Resolution estimate (Å)	Estimation criterion (FSC cut-off)		
	0.143	0.5	Half-bit
Reported by author	2.65	-	-
Author-provided FSC curve	2.65	3.06	2.71
Unmasked-calculated*	3.58	6.80	3.68

*Resolution estimate based on FSC curve calculated by comparison of deposited half-maps. The value from deposited half-maps intersecting FSC 0.143 CUT-OFF 3.58 differs from the reported value 2.65 by more than 10 %

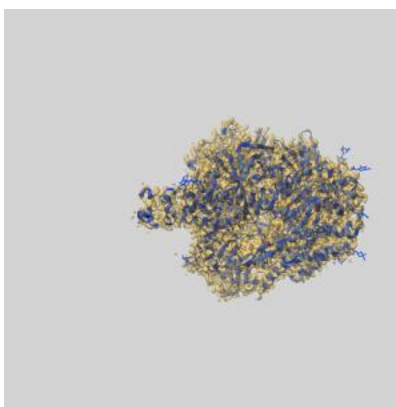
9 Map-model fit [i](#)

This section contains information regarding the fit between EMDB map EMD-45779 and PDB model 9COG. Per-residue inclusion information can be found in [section 3](#) on [page 10](#).

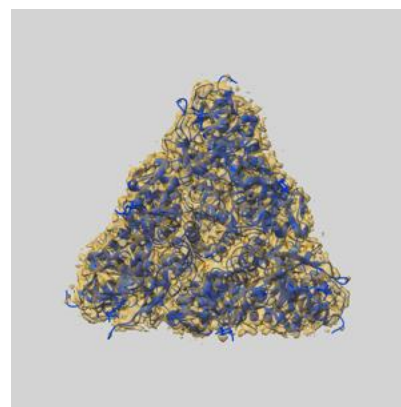
9.1 Map-model overlay [i](#)



X



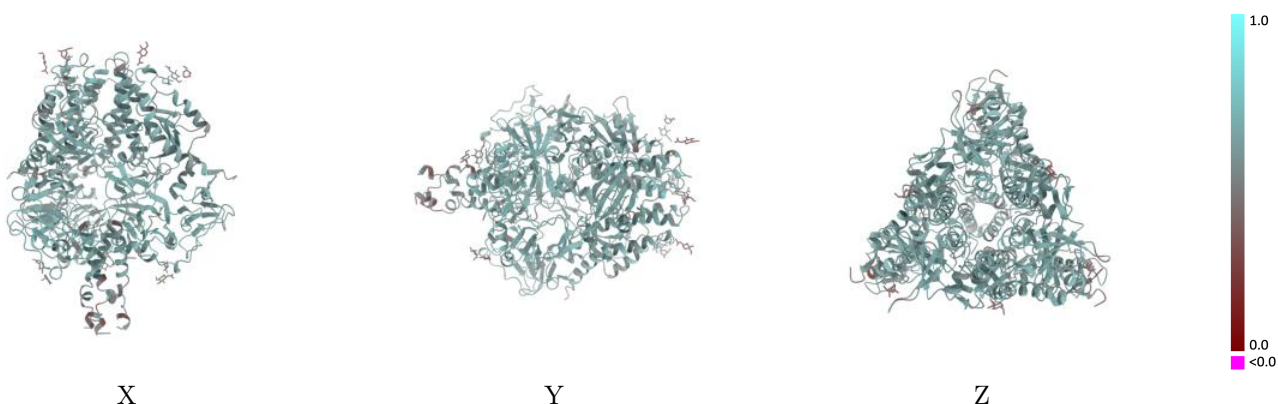
Y



Z

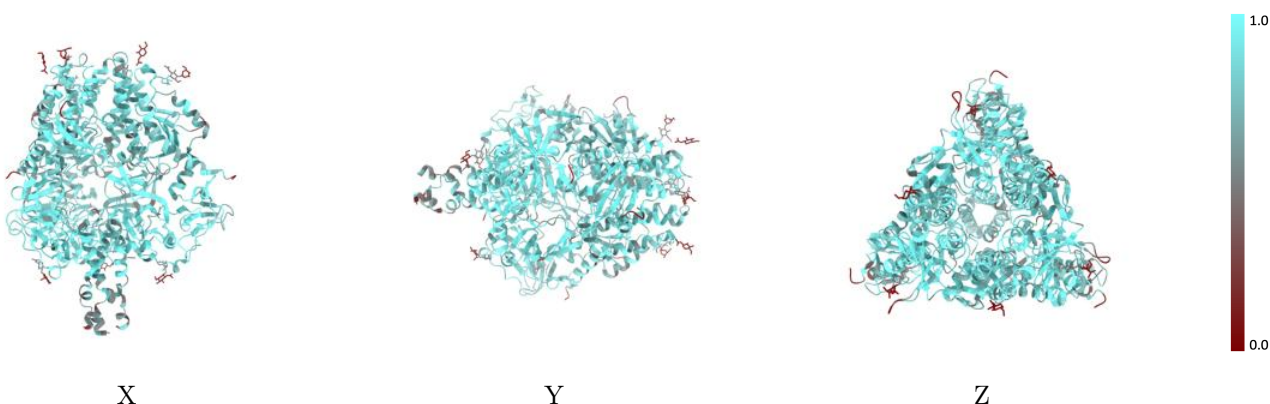
The images above show the 3D surface view of the map at the recommended contour level 0.427 at 50% transparency in yellow overlaid with a ribbon representation of the model coloured in blue. These images allow for the visual assessment of the quality of fit between the atomic model and the map.

9.2 Q-score mapped to coordinate model [i](#)



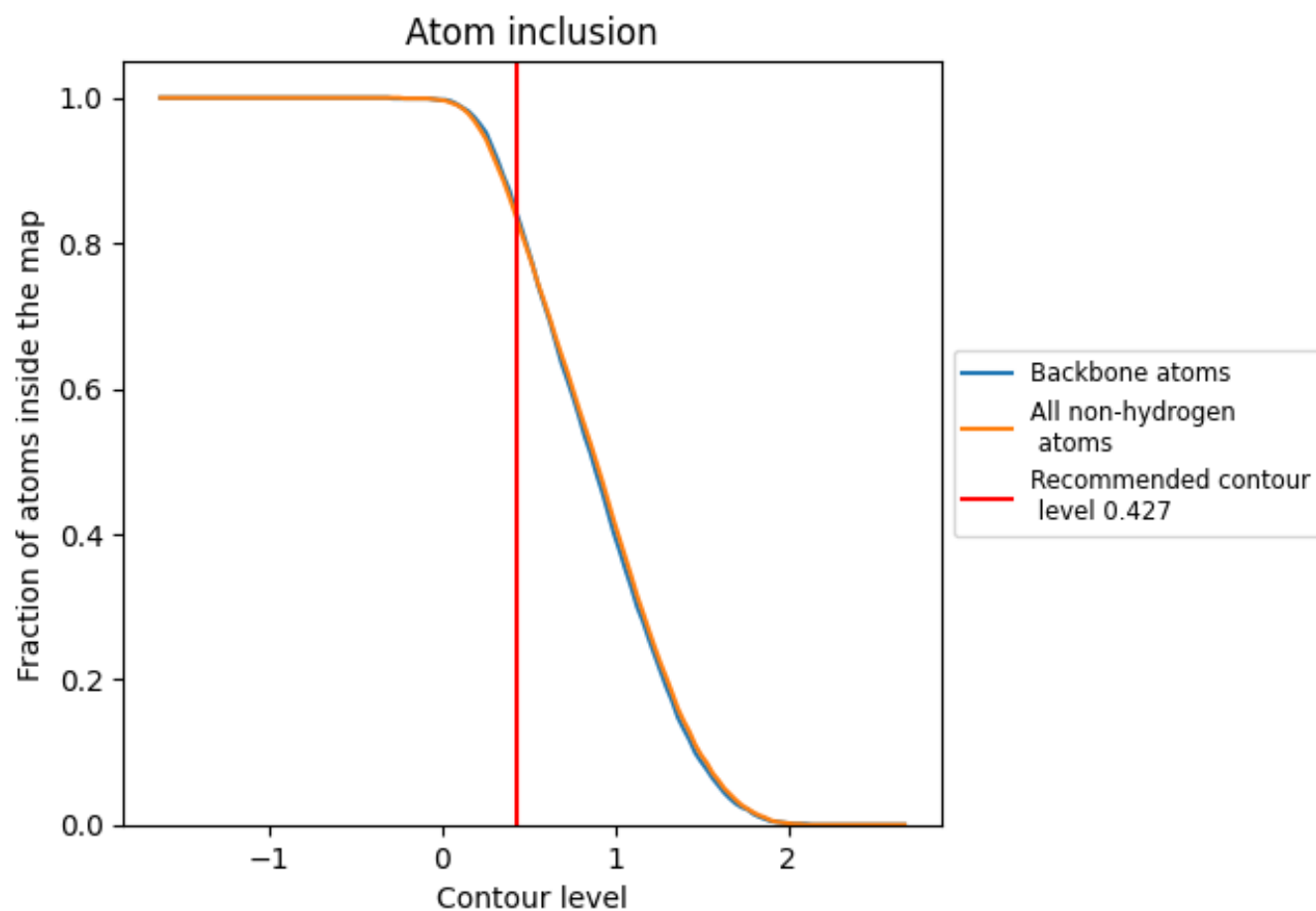
The images above show the model with each residue coloured according its Q-score. This shows their resolvability in the map with higher Q-score values reflecting better resolvability. Please note: Q-score is calculating the resolvability of atoms, and thus high values are only expected at resolutions at which atoms can be resolved. Low Q-score values may therefore be expected for many entries.

9.3 Atom inclusion mapped to coordinate model [i](#)



The images above show the model with each residue coloured according to its atom inclusion. This shows to what extent they are inside the map at the recommended contour level (0.427).

9.4 Atom inclusion [i](#)



At the recommended contour level, 84% of all backbone atoms, 84% of all non-hydrogen atoms, are inside the map.

9.5 Map-model fit summary ⓘ

The table lists the average atom inclusion at the recommended contour level (0.427) and Q-score for the entire model and for each chain.

Chain	Atom inclusion	Q-score
All	<div></div> 0.8380	<div></div> 0.6010
A	<div></div> 0.8470	<div></div> 0.6010
B	<div></div> 0.8510	<div></div> 0.6060
C	<div></div> 0.8470	<div></div> 0.6060
D	<div></div> 0.8530	<div></div> 0.6010
E	<div></div> 0.8530	<div></div> 0.6040
F	<div></div> 0.8560	<div></div> 0.6050
G	<div></div> 0.3210	<div></div> 0.3600
H	<div></div> 0.4620	<div></div> 0.4970
I	<div></div> 0.3210	<div></div> 0.4700
J	<div></div> 0.4870	<div></div> 0.4970
K	<div></div> 0.3570	<div></div> 0.4380
L	<div></div> 0.4620	<div></div> 0.5020
M	<div></div> 0.8380	<div></div> 0.6030
N	<div></div> 0.8110	<div></div> 0.5960
O	<div></div> 0.8650	<div></div> 0.6000

1.0

0.0

<0.0