



Full wwPDB X-ray Structure Validation Report ⓘ

Jun 12, 2024 – 09:55 PM EDT

PDB ID : 3BSF
Title : Crystal Structure of the MTA/SAH nucleosidase
Authors : Song, H.K.; Park, E.Y.; Choi, W.-S.
Deposited on : 2007-12-23
Resolution : 2.90 Å(reported)

This is a Full wwPDB X-ray Structure Validation Report for a publicly released PDB entry.

We welcome your comments at validation@mail.wwpdb.org

A user guide is available at

<https://www.wwpdb.org/validation/2017/XrayValidationReportHelp>

with specific help available everywhere you see the ⓘ symbol.

The types of validation reports are described at

<http://www.wwpdb.org/validation/2017/FAQs#types>.

The following versions of software and data (see [references ⓘ](#)) were used in the production of this report:

MolProbity : 4.02b-467
Mogul : 2022.3.0, CSD as543be (2022)
Xtriage (Phenix) : 1.20.1
EDS : 2.36.2
Percentile statistics : 20191225.v01 (using entries in the PDB archive December 25th 2019)
Refmac : 5.8.0158
CCP4 : 7.0.044 (Gargrove)
Ideal geometry (proteins) : Engh & Huber (2001)
Ideal geometry (DNA, RNA) : Parkinson et al. (1996)
Validation Pipeline (wwPDB-VP) : 2.36.2

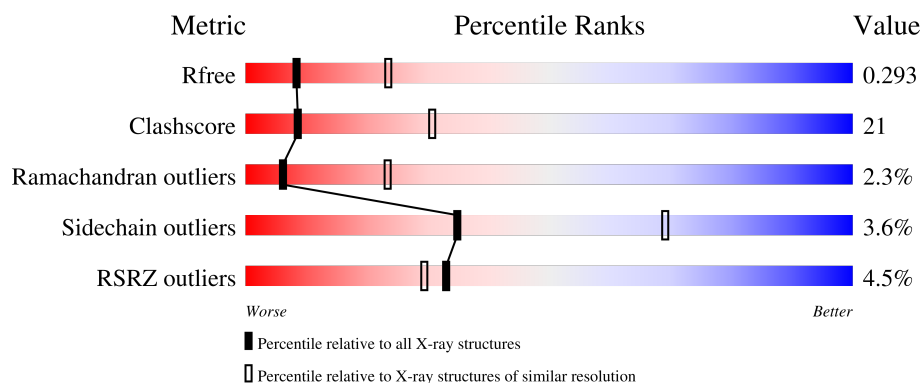
1 Overall quality at a glance

The following experimental techniques were used to determine the structure:

X-RAY DIFFRACTION

The reported resolution of this entry is 2.90 Å.

Percentile scores (ranging between 0-100) for global validation metrics of the entry are shown in the following graphic. The table shows the number of entries on which the scores are based.



Metric	Whole archive (#Entries)	Similar resolution (#Entries, resolution range(Å))
R_{free}	130704	1957 (2.90-2.90)
Clashscore	141614	2172 (2.90-2.90)
Ramachandran outliers	138981	2115 (2.90-2.90)
Sidechain outliers	138945	2117 (2.90-2.90)
RSRZ outliers	127900	1906 (2.90-2.90)

The table below summarises the geometric issues observed across the polymeric chains and their fit to the electron density. The red, orange, yellow and green segments of the lower bar indicate the fraction of residues that contain outliers for ≥ 3 , 2, 1 and 0 types of geometric quality criteria respectively. A grey segment represents the fraction of residues that are not modelled. The numeric value for each fraction is indicated below the corresponding segment, with a dot representing fractions $\leq 5\%$. The upper red bar (where present) indicates the fraction of residues that have poor fit to the electron density. The numeric value is given above the bar.

Mol	Chain	Length	Quality of chain
1	A	254	<div> <div>3%</div> <div>57%</div> <div>36%</div> <div>...</div> </div>
1	B	254	<div> <div>6%</div> <div>59%</div> <div>33%</div> <div>..</div> </div>

2 Entry composition [i](#)

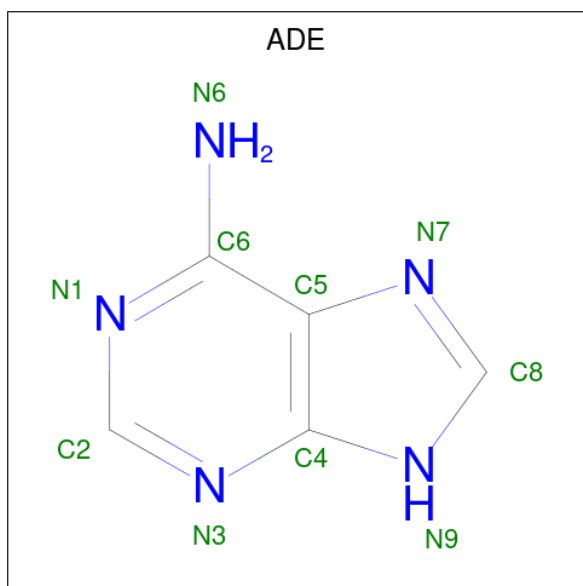
There are 3 unique types of molecules in this entry. The entry contains 3743 atoms, of which 0 are hydrogens and 0 are deuteriums.

In the tables below, the ZeroOcc column contains the number of atoms modelled with zero occupancy, the AltConf column contains the number of residues with at least one atom in alternate conformation and the Trace column contains the number of residues modelled with at most 2 atoms.

- Molecule 1 is a protein called At4g34840.

Mol	Chain	Residues	Atoms					ZeroOcc	AltConf	Trace
1	A	244	Total	C	N	O	S	0	0	0
			1850	1181	302	357	10			
1	B	244	Total	C	N	O	S	0	0	0
			1850	1181	302	357	10			

- Molecule 2 is ADENINE (three-letter code: ADE) (formula: C₅H₅N₅).



Mol	Chain	Residues	Atoms			ZeroOcc	AltConf
2	A	1	Total	C	N	0	0
			10	5	5		
2	B	1	Total	C	N	0	0
			10	5	5		

- Molecule 3 is water.

Mol	Chain	Residues	Atoms		ZeroOcc	AltConf
3	A	12	Total	O	0	0
			12	12		
3	B	11	Total	O	0	0
			11	11		

4 Data and refinement statistics

Property	Value	Source
Space group	P 31 2 1	Depositor
Cell constants a, b, c, α , β , γ	79.35Å 79.35Å 138.15Å 90.00° 90.00° 120.00°	Depositor
Resolution (Å)	50.00 – 2.90 39.67 – 2.91	Depositor EDS
% Data completeness (in resolution range)	(Not available) (50.00-2.90) 88.4 (39.67-2.91)	Depositor EDS
R_{merge}	(Not available)	Depositor
R_{sym}	(Not available)	Depositor
$\langle I/\sigma(I) \rangle$ ¹	3.71 (at 2.90Å)	Xtriage
Refinement program	CNS 1.1	Depositor
R, R_{free}	0.253 , 0.293 0.253 , 0.293	Depositor DCC
R_{free} test set	1152 reflections (10.33%)	wwPDB-VP
Wilson B-factor (Å ²)	64.6	Xtriage
Anisotropy	0.259	Xtriage
Bulk solvent k_{sol} (e/Å ³), B_{sol} (Å ²)	0.36 , 69.1	EDS
L-test for twinning ²	$\langle L \rangle = 0.49$, $\langle L^2 \rangle = 0.32$	Xtriage
Estimated twinning fraction	0.064 for -h,-k,l	Xtriage
F_o, F_c correlation	0.90	EDS
Total number of atoms	3743	wwPDB-VP
Average B, all atoms (Å ²)	60.0	wwPDB-VP

Xtriage's analysis on translational NCS is as follows: *The largest off-origin peak in the Patterson function is 4.17% of the height of the origin peak. No significant pseudotranslation is detected.*

¹Intensities estimated from amplitudes.

²Theoretical values of $\langle |L| \rangle$, $\langle L^2 \rangle$ for acentric reflections are 0.5, 0.333 respectively for untwinned datasets, and 0.375, 0.2 for perfectly twinned datasets.

5 Model quality [i](#)

5.1 Standard geometry [i](#)

Bond lengths and bond angles in the following residue types are not validated in this section: ADE

The Z score for a bond length (or angle) is the number of standard deviations the observed value is removed from the expected value. A bond length (or angle) with $|Z| > 5$ is considered an outlier worth inspection. RMSZ is the root-mean-square of all Z scores of the bond lengths (or angles).

Mol	Chain	Bond lengths		Bond angles	
		RMSZ	$\# Z > 5$	RMSZ	$\# Z > 5$
1	A	0.44	0/1881	0.65	1/2558 (0.0%)
1	B	0.44	0/1881	0.63	1/2558 (0.0%)
All	All	0.44	0/3762	0.64	2/5116 (0.0%)

There are no bond length outliers.

All (2) bond angle outliers are listed below:

Mol	Chain	Res	Type	Atoms	Z	Observed(°)	Ideal(°)
1	A	75	GLU	CA-CB-CG	5.94	126.47	113.40
1	B	75	GLU	CA-CB-CG	5.04	124.50	113.40

There are no chirality outliers.

There are no planarity outliers.

5.2 Too-close contacts [i](#)

In the following table, the Non-H and H(model) columns list the number of non-hydrogen atoms and hydrogen atoms in the chain respectively. The H(added) column lists the number of hydrogen atoms added and optimized by MolProbity. The Clashes column lists the number of clashes within the asymmetric unit, whereas Symm-Clashes lists symmetry-related clashes.

Mol	Chain	Non-H	H(model)	H(added)	Clashes	Symm-Clashes
1	A	1850	0	1900	83	0
1	B	1850	0	1900	84	0
2	A	10	0	4	0	0
2	B	10	0	4	0	0
3	A	12	0	0	1	0
3	B	11	0	0	0	0
All	All	3743	0	3808	156	0

The all-atom clashscore is defined as the number of clashes found per 1000 atoms (including hydrogen atoms). The all-atom clashscore for this structure is 21.

All (156) close contacts within the same asymmetric unit are listed below, sorted by their clash magnitude.

Atom-1	Atom-2	Interatomic distance (Å)	Clash overlap (Å)
1:B:218:ARG:HH12	1:B:222:GLU:HB2	1.13	1.11
1:B:15:THR:HG22	1:B:60:ASN:HD22	1.33	0.94
1:A:15:THR:HG22	1:A:60:ASN:HD22	1.38	0.88
1:A:122:THR:CG2	1:A:161:ARG:HG2	2.05	0.87
1:B:122:THR:CG2	1:B:161:ARG:HG2	2.04	0.86
1:A:74:VAL:HG21	1:B:135:LEU:HG	1.60	0.81
1:B:17:VAL:HG23	1:B:95:PRO:HB3	1.61	0.81
1:B:203:PRO:HG2	1:B:251:LEU:HD13	1.64	0.80
1:A:17:VAL:HG23	1:A:95:PRO:HB3	1.64	0.77
1:B:218:ARG:NH1	1:B:222:GLU:HB2	1.97	0.74
1:B:132:VAL:HG13	1:B:133:PRO:HD2	1.69	0.74
1:A:122:THR:HG21	1:A:161:ARG:NH1	2.04	0.72
1:A:132:VAL:HG13	1:A:133:PRO:HD2	1.71	0.71
1:B:198:ASP:O	1:B:201:LYS:HD2	1.91	0.71
1:B:122:THR:HG21	1:B:161:ARG:NH1	2.04	0.71
1:A:135:LEU:HG	1:B:74:VAL:HG21	1.74	0.70
1:B:227:ASN:C	1:B:229:ALA:H	1.96	0.69
1:A:11:ARG:HG2	1:A:12:PRO:HD2	1.76	0.68
1:A:15:THR:HG22	1:A:60:ASN:HB2	1.74	0.68
1:B:238:SER:O	1:B:242:VAL:HG23	1.95	0.67
1:B:15:THR:HG22	1:B:60:ASN:ND2	2.09	0.66
1:A:13:ILE:HD11	1:A:251:LEU:HD23	1.78	0.66
1:B:132:VAL:HG11	1:B:135:LEU:HD12	1.76	0.66
1:A:198:ASP:O	1:A:201:LYS:HD2	1.95	0.66
1:A:238:SER:O	1:A:242:VAL:HG23	1.94	0.66
1:A:199:ILE:HG13	1:A:200:PHE:N	2.12	0.65
1:B:15:THR:CG2	1:B:60:ASN:HD22	2.08	0.65
1:A:132:VAL:HG11	1:A:135:LEU:HD12	1.78	0.64
1:B:199:ILE:HG13	1:B:200:PHE:N	2.12	0.64
1:B:203:PRO:HG2	1:B:251:LEU:CD1	2.27	0.64
1:A:120:VAL:HG21	1:A:162:LEU:HD22	1.80	0.64
1:A:122:THR:HG23	1:A:161:ARG:HG2	1.80	0.64
1:A:15:THR:CG2	1:A:60:ASN:HD22	2.10	0.64
1:B:122:THR:HG23	1:B:161:ARG:HG2	1.80	0.63
1:A:145:THR:HG22	1:A:206:LEU:HD13	1.81	0.62
1:A:203:PRO:HG2	1:A:251:LEU:HD13	1.80	0.62
1:B:145:THR:HG22	1:B:206:LEU:HD13	1.81	0.62

Continued on next page...

Continued from previous page...

Atom-1	Atom-2	Interatomic distance (Å)	Clash overlap (Å)
1:A:220:THR:OG1	1:A:222:GLU:HG2	1.99	0.62
1:B:15:THR:HG22	1:B:60:ASN:HB2	1.79	0.62
1:B:107:PHE:HA	1:B:215:ASP:OD1	1.99	0.62
1:B:120:VAL:HG21	1:B:162:LEU:HD22	1.82	0.62
1:A:24:LYS:HG3	3:A:707:HOH:O	2.01	0.61
1:B:206:LEU:HD12	1:B:206:LEU:N	2.17	0.60
1:A:15:THR:HG22	1:A:60:ASN:ND2	2.13	0.60
1:A:122:THR:HG22	1:A:161:ARG:HG2	1.84	0.60
1:B:173:HIS:O	1:B:176:GLU:HG3	2.01	0.60
1:A:27:GLN:HB3	1:A:28:PRO:HD3	1.86	0.58
1:A:206:LEU:HD12	1:A:206:LEU:N	2.19	0.57
1:B:122:THR:HG22	1:B:161:ARG:HG2	1.83	0.57
1:A:72:LEU:HD12	1:B:134:VAL:CG2	2.34	0.57
1:A:173:HIS:O	1:A:176:GLU:HG3	2.07	0.55
1:A:120:VAL:HB	1:A:206:LEU:HB2	1.89	0.54
1:A:131:PRO:HD2	1:B:168:MET:HB3	1.88	0.54
1:B:150:ASN:O	1:B:154:GLU:HB2	2.05	0.54
1:A:126:HIS:HB3	1:A:163:SER:OG	2.07	0.54
1:B:28:PRO:HB2	1:B:236:ASP:HB2	1.89	0.54
1:B:35:LEU:HD22	1:B:54:GLY:HA3	1.90	0.54
1:A:200:PHE:CD2	1:B:46:GLU:HG3	2.41	0.54
1:A:205:ILE:C	1:A:206:LEU:HD12	2.28	0.53
1:B:13:ILE:HD11	1:B:251:LEU:HD23	1.90	0.53
1:B:27:GLN:HB3	1:B:28:PRO:HD3	1.90	0.53
1:B:205:ILE:C	1:B:206:LEU:HD12	2.29	0.53
1:A:203:PRO:HG2	1:A:251:LEU:CD1	2.38	0.53
1:A:148:THR:O	1:A:152:ILE:HG23	2.09	0.53
1:A:228:LEU:O	1:A:232:THR:HB	2.10	0.52
1:B:19:ILE:HD12	1:B:85:VAL:HG12	1.91	0.51
1:B:75:GLU:OE2	1:B:75:GLU:N	2.35	0.51
1:B:227:ASN:C	1:B:229:ALA:N	2.64	0.51
1:B:148:THR:O	1:B:152:ILE:HG23	2.10	0.51
1:B:222:GLU:O	1:B:226:GLU:HG2	2.11	0.51
1:B:100:ASN:HD21	1:B:208:LYS:NZ	2.09	0.50
1:A:178:ILE:HG23	1:A:183:ALA:HB3	1.92	0.50
1:A:35:LEU:HD22	1:A:54:GLY:HA3	1.93	0.50
1:B:22:MET:HB2	1:B:25:GLU:HG3	1.93	0.49
1:B:120:VAL:HB	1:B:206:LEU:HB2	1.94	0.49
1:B:162:LEU:CD1	1:B:185:VAL:HG13	2.42	0.49
1:B:17:VAL:CG2	1:B:95:PRO:HB3	2.39	0.49
1:B:100:ASN:ND2	1:B:208:LYS:NZ	2.61	0.49

Continued on next page...

Continued from previous page...

Atom-1	Atom-2	Interatomic distance (Å)	Clash overlap (Å)
1:A:100:ASN:HD21	1:A:208:LYS:NZ	2.10	0.49
1:B:59:LEU:HD21	1:B:247:SER:HA	1.95	0.48
1:A:22:MET:HB2	1:A:25:GLU:HG3	1.95	0.48
1:B:145:THR:CG2	1:B:206:LEU:HD13	2.42	0.48
1:A:221:SER:O	1:A:225:LEU:HB3	2.13	0.48
1:A:218:ARG:O	1:A:219:PRO:O	2.31	0.48
1:B:227:ASN:O	1:B:229:ALA:N	2.46	0.48
1:A:150:ASN:O	1:A:154:GLU:HB2	2.14	0.47
1:A:46:GLU:HG3	1:B:200:PHE:CD2	2.48	0.47
1:A:80:VAL:HB	1:A:81:PRO:HD3	1.95	0.47
1:B:151:LEU:HD11	1:B:155:LEU:HD12	1.96	0.47
1:B:174:ASP:O	1:B:178:ILE:HG13	2.13	0.47
1:A:100:ASN:ND2	1:A:208:LYS:NZ	2.63	0.47
1:A:229:ALA:O	1:A:232:THR:HG22	2.15	0.47
1:B:163:SER:HB2	1:B:183:ALA:HB2	1.97	0.47
1:B:171:SER:HB2	1:B:172:PRO:HD2	1.95	0.47
1:A:107:PHE:CE2	1:A:178:ILE:HG21	2.50	0.47
1:A:145:THR:CG2	1:A:206:LEU:HD13	2.43	0.47
1:A:168:MET:HB3	1:B:131:PRO:HD2	1.97	0.47
1:A:163:SER:HB2	1:A:183:ALA:HB2	1.96	0.47
1:B:80:VAL:HB	1:B:81:PRO:HD3	1.97	0.47
1:B:126:HIS:HB3	1:B:163:SER:OG	2.15	0.47
1:B:35:LEU:CD2	1:B:54:GLY:HA3	2.46	0.46
1:B:107:PHE:CE2	1:B:178:ILE:HG21	2.50	0.46
1:A:171:SER:HB2	1:A:172:PRO:HD2	1.97	0.46
1:A:23:GLN:HE21	1:A:27:GLN:HE22	1.64	0.46
1:A:137:ILE:HG21	1:B:72:LEU:HD11	1.98	0.46
1:A:17:VAL:CG2	1:A:95:PRO:HB3	2.40	0.45
1:B:229:ALA:O	1:B:232:THR:HG22	2.16	0.45
1:B:245:PHE:O	1:B:249:LYS:HD2	2.16	0.45
1:A:98:ILE:HG22	1:A:202:VAL:HG22	1.98	0.45
1:A:162:LEU:CD1	1:A:185:VAL:HG13	2.47	0.45
1:B:199:ILE:HG13	1:B:200:PHE:CD1	2.52	0.45
1:B:228:LEU:O	1:B:228:LEU:HG	2.16	0.45
1:A:100:ASN:ND2	1:A:208:LYS:HZ3	2.15	0.45
1:B:91:LEU:HD21	1:B:200:PHE:CE2	2.52	0.45
1:B:163:SER:HB2	1:B:183:ALA:CB	2.47	0.45
1:B:23:GLN:HE21	1:B:27:GLN:HE22	1.64	0.44
1:A:218:ARG:HG3	1:A:224:PHE:CE1	2.52	0.44
1:A:74:VAL:HG21	1:B:135:LEU:CG	2.40	0.44
1:A:118:TYR:CD2	1:A:158:LYS:HB3	2.52	0.44

Continued on next page...

Continued from previous page...

Atom-1	Atom-2	Interatomic distance (Å)	Clash overlap (Å)
1:B:98:ILE:HG22	1:B:202:VAL:HG22	1.99	0.44
1:A:72:LEU:HD12	1:B:134:VAL:HG23	2.00	0.44
1:A:220:THR:HB	1:A:221:SER:H	1.53	0.44
1:A:13:ILE:HD11	1:A:254:LEU:HD11	1.99	0.43
1:A:59:LEU:HD21	1:A:247:SER:HA	1.99	0.43
1:A:130:ILE:O	1:A:136:ASP:HB3	2.18	0.43
1:B:100:ASN:HD21	1:B:208:LYS:HZ1	1.64	0.43
1:A:29:LEU:HD23	1:A:63:ILE:HD11	2.01	0.43
1:B:178:ILE:HG23	1:B:183:ALA:HB3	2.01	0.43
1:B:49:TRP:CD1	1:B:49:TRP:N	2.81	0.43
1:B:123:VAL:HG23	1:B:162:LEU:HB3	2.01	0.43
1:A:249:LYS:HB3	1:A:253:ASP:HB2	1.99	0.43
1:B:42:PRO:HD3	1:B:51:MET:HE1	2.01	0.43
1:B:93:ILE:O	1:B:94:GLN:C	2.57	0.43
1:B:162:LEU:HD13	1:B:185:VAL:HG13	2.00	0.43
1:A:19:ILE:HD12	1:A:85:VAL:HG12	2.00	0.43
1:A:91:LEU:HD21	1:A:200:PHE:CE2	2.53	0.43
1:A:128:ARG:HG2	1:B:166:ASP:HB3	2.01	0.42
1:A:121:SER:OG	1:A:122:THR:HG22	2.19	0.42
1:B:118:TYR:CD2	1:B:158:LYS:HB3	2.55	0.42
1:A:245:PHE:O	1:A:249:LYS:HD2	2.19	0.42
1:A:49:TRP:N	1:A:49:TRP:CD1	2.84	0.42
1:A:218:ARG:NE	1:A:224:PHE:CZ	2.88	0.41
1:A:220:THR:C	1:A:222:GLU:H	2.22	0.41
1:A:18:PHE:HB2	1:A:63:ILE:HG12	2.02	0.41
1:A:223:GLU:HA	1:A:227:ASN:HB2	2.00	0.41
1:B:249:LYS:HB3	1:B:253:ASP:HB2	2.01	0.41
1:A:93:ILE:O	1:A:94:GLN:C	2.59	0.41
1:A:115:SER:HA	1:A:231:VAL:HG22	2.03	0.41
1:A:218:ARG:NH2	1:A:224:PHE:CE2	2.89	0.41
1:A:219:PRO:HD2	1:A:223:GLU:OE2	2.21	0.41
1:A:42:PRO:HD3	1:A:51:MET:HE1	2.03	0.40
1:B:188:MET:O	1:B:189:GLU:HG3	2.21	0.40
1:A:114:ILE:HG12	1:A:227:ASN:ND2	2.36	0.40
1:B:93:ILE:H	1:B:93:ILE:HG12	1.70	0.40
1:B:100:ASN:ND2	1:B:208:LYS:HZ3	2.18	0.40
1:B:104:ALA:HB1	1:B:186:LYS:O	2.21	0.40

There are no symmetry-related clashes.

5.3 Torsion angles

5.3.1 Protein backbone

In the following table, the Percentiles column shows the percent Ramachandran outliers of the chain as a percentile score with respect to all X-ray entries followed by that with respect to entries of similar resolution.

The Analysed column shows the number of residues for which the backbone conformation was analysed, and the total number of residues.

Mol	Chain	Analysed	Favoured	Allowed	Outliers	Percentiles	
1	A	242/254 (95%)	207 (86%)	30 (12%)	5 (2%)	7	26
1	B	242/254 (95%)	214 (88%)	22 (9%)	6 (2%)	5	21
All	All	484/508 (95%)	421 (87%)	52 (11%)	11 (2%)	6	23

All (11) Ramachandran outliers are listed below:

Mol	Chain	Res	Type
1	A	219	PRO
1	A	92	ALA
1	B	92	ALA
1	B	228	LEU
1	B	219	PRO
1	A	94	GLN
1	A	133	PRO
1	B	133	PRO
1	A	93	ILE
1	B	93	ILE
1	B	94	GLN

5.3.2 Protein sidechains

In the following table, the Percentiles column shows the percent sidechain outliers of the chain as a percentile score with respect to all X-ray entries followed by that with respect to entries of similar resolution.

The Analysed column shows the number of residues for which the sidechain conformation was analysed, and the total number of residues.

Mol	Chain	Analysed	Rotameric	Outliers	Percentiles	
1	A	209/217 (96%)	201 (96%)	8 (4%)	33	67
1	B	209/217 (96%)	202 (97%)	7 (3%)	38	72

Continued on next page...

Continued from previous page...

Mol	Chain	Analysed	Rotameric	Outliers	Percentiles
All	All	418/434 (96%)	403 (96%)	15 (4%)	35 69

All (15) residues with a non-rotameric sidechain are listed below:

Mol	Chain	Res	Type
1	A	55	MET
1	A	75	GLU
1	A	98	ILE
1	A	133	PRO
1	A	176	GLU
1	A	199	ILE
1	A	202	VAL
1	A	219	PRO
1	B	55	MET
1	B	95	PRO
1	B	98	ILE
1	B	133	PRO
1	B	176	GLU
1	B	199	ILE
1	B	202	VAL

Sometimes sidechains can be flipped to improve hydrogen bonding and reduce clashes. All (11) such sidechains are listed below:

Mol	Chain	Res	Type
1	A	27	GLN
1	A	60	ASN
1	A	100	ASN
1	A	144	ASN
1	A	150	ASN
1	B	27	GLN
1	B	60	ASN
1	B	100	ASN
1	B	144	ASN
1	B	150	ASN
1	B	173	HIS

5.3.3 RNA ⓘ

There are no RNA molecules in this entry.

5.4 Non-standard residues in protein, DNA, RNA chains [i](#)

There are no non-standard protein/DNA/RNA residues in this entry.

5.5 Carbohydrates [i](#)

There are no monosaccharides in this entry.

5.6 Ligand geometry [i](#)

2 ligands are modelled in this entry.

In the following table, the Counts columns list the number of bonds (or angles) for which Mogul statistics could be retrieved, the number of bonds (or angles) that are observed in the model and the number of bonds (or angles) that are defined in the Chemical Component Dictionary. The Link column lists molecule types, if any, to which the group is linked. The Z score for a bond length (or angle) is the number of standard deviations the observed value is removed from the expected value. A bond length (or angle) with $|Z| > 2$ is considered an outlier worth inspection. RMSZ is the root-mean-square of all Z scores of the bond lengths (or angles).

Mol	Type	Chain	Res	Link	Bond lengths			Bond angles		
					Counts	RMSZ	$\# Z > 2$	Counts	RMSZ	$\# Z > 2$
2	ADE	A	701	-	8,11,11	2.44	3 (37%)	6,15,15	1.17	1 (16%)
2	ADE	B	702	-	8,11,11	2.35	3 (37%)	6,15,15	1.21	1 (16%)

In the following table, the Chirals column lists the number of chiral outliers, the number of chiral centers analysed, the number of these observed in the model and the number defined in the Chemical Component Dictionary. Similar counts are reported in the Torsion and Rings columns. '-' means no outliers of that kind were identified.

Mol	Type	Chain	Res	Link	Chirals	Torsions	Rings
2	ADE	A	701	-	-	-	0/2/2/2
2	ADE	B	702	-	-	-	0/2/2/2

All (6) bond length outliers are listed below:

Mol	Chain	Res	Type	Atoms	Z	Observed(Å)	Ideal(Å)
2	A	701	ADE	C2-N3	5.23	1.40	1.32
2	B	702	ADE	C2-N3	5.10	1.40	1.32
2	B	702	ADE	C2-N1	2.61	1.38	1.33
2	A	701	ADE	C2-N1	2.58	1.38	1.33
2	A	701	ADE	C4-N9	2.53	1.39	1.34
2	B	702	ADE	C4-N9	2.23	1.38	1.34

All (2) bond angle outliers are listed below:

Mol	Chain	Res	Type	Atoms	Z	Observed(°)	Ideal(°)
2	B	702	ADE	N3-C2-N1	-2.14	125.77	128.67
2	A	701	ADE	N3-C2-N1	-2.07	125.86	128.67

There are no chirality outliers.

There are no torsion outliers.

There are no ring outliers.

No monomer is involved in short contacts.

5.7 Other polymers [i](#)

There are no such residues in this entry.

5.8 Polymer linkage issues [i](#)

There are no chain breaks in this entry.

6 Fit of model and data

6.1 Protein, DNA and RNA chains

In the following table, the column labelled ‘#RSRZ> 2’ contains the number (and percentage) of RSRZ outliers, followed by percent RSRZ outliers for the chain as percentile scores relative to all X-ray entries and entries of similar resolution. The OWAB column contains the minimum, median, 95th percentile and maximum values of the occupancy-weighted average B-factor per residue. The column labelled ‘Q< 0.9’ lists the number of (and percentage) of residues with an average occupancy less than 0.9.

Mol	Chain	Analysed	<RSRZ>	#RSRZ>2	OWAB(Å ²)	Q<0.9
1	A	244/254 (96%)	0.24	7 (2%) 51 47	41, 57, 86, 121	0
1	B	244/254 (96%)	0.35	15 (6%) 21 17	40, 57, 86, 117	0
All	All	488/508 (96%)	0.30	22 (4%) 33 29	40, 57, 88, 121	0

All (22) RSRZ outliers are listed below:

Mol	Chain	Res	Type	RSRZ
1	A	223	GLU	8.5
1	B	225	LEU	5.5
1	B	223	GLU	4.5
1	B	224	PHE	4.1
1	B	220	THR	4.0
1	A	219	PRO	3.9
1	A	220	THR	3.2
1	A	224	PHE	3.0
1	B	11	ARG	2.7
1	B	219	PRO	2.7
1	B	221	SER	2.7
1	A	225	LEU	2.5
1	A	114	ILE	2.4
1	B	217	ASN	2.3
1	B	251	LEU	2.2
1	B	18	PHE	2.2
1	B	56	TYR	2.1
1	B	60	ASN	2.1
1	B	222	GLU	2.0
1	B	172	PRO	2.0
1	B	151	LEU	2.0
1	A	221	SER	2.0

6.2 Non-standard residues in protein, DNA, RNA chains [i](#)

There are no non-standard protein/DNA/RNA residues in this entry.

6.3 Carbohydrates [i](#)

There are no monosaccharides in this entry.

6.4 Ligands [i](#)

In the following table, the Atoms column lists the number of modelled atoms in the group and the number defined in the chemical component dictionary. The B-factors column lists the minimum, median, 95th percentile and maximum values of B factors of atoms in the group. The column labelled 'Q< 0.9' lists the number of atoms with occupancy less than 0.9.

Mol	Type	Chain	Res	Atoms	RSCC	RSR	B-factors(\AA^2)	Q<0.9
2	ADE	B	702	10/10	0.81	0.33	90,91,91,91	0
2	ADE	A	701	10/10	0.86	0.24	90,90,90,91	0

6.5 Other polymers [i](#)

There are no such residues in this entry.