



Full wwPDB X-ray Structure Validation Report ⓘ

Mar 10, 2025 – 01:00 PM EDT

PDB ID : 9BGB
Title : Tri-complex of Daraxonrasib (RMC-6236), KRAS Q61H, and CypA
Authors : Tomlinson, A.C.A.; Bieder, R.; Chen, A.; Knox, J.E.; Yano, J.K.
Deposited on : 2024-04-18
Resolution : 1.68 Å(reported)

This is a Full wwPDB X-ray Structure Validation Report for a publicly released PDB entry.

We welcome your comments at validation@mail.wwpdb.org

A user guide is available at

<https://www.wwpdb.org/validation/2017/XrayValidationReportHelp>

with specific help available everywhere you see the ⓘ symbol.

The types of validation reports are described at

<http://www.wwpdb.org/validation/2017/FAQs#types>.

The following versions of software and data (see [references ⓘ](#)) were used in the production of this report:

MolProbity	:	4.02b-467
Mogul	:	2022.3.0, CSD as543be (2022)
Xtriage (Phenix)	:	1.21
EDS	:	3.0
buster-report	:	1.1.7 (2018)
Percentile statistics	:	20231227.v01 (using entries in the PDB archive December 27th 2023)
CCP4	:	9.0.004 (Gargrove)
Density-Fitness	:	1.0.11
Ideal geometry (proteins)	:	Engh & Huber (2001)
Ideal geometry (DNA, RNA)	:	Parkinson et al. (1996)
Validation Pipeline (wwPDB-VP)	:	2.41.4

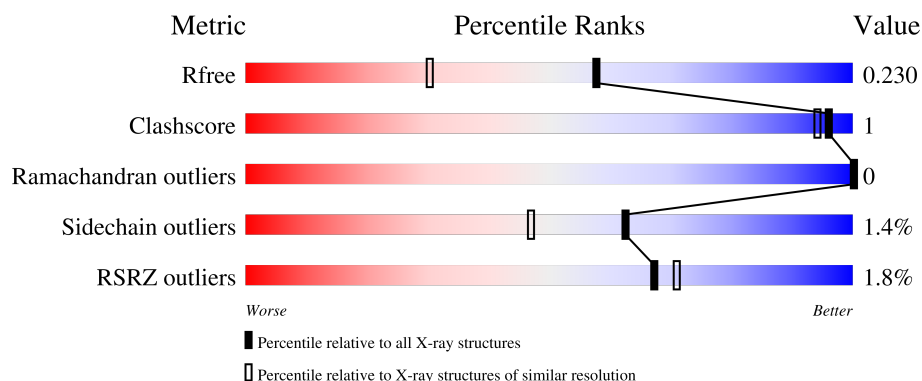
1 Overall quality at a glance

The following experimental techniques were used to determine the structure:

X-RAY DIFFRACTION

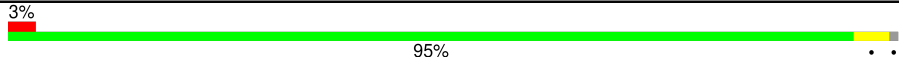
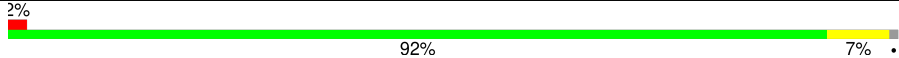
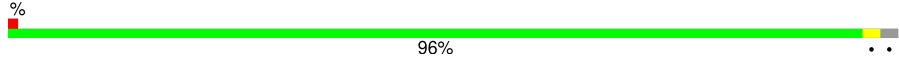
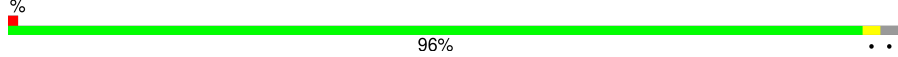
The reported resolution of this entry is 1.68 Å.

Percentile scores (ranging between 0-100) for global validation metrics of the entry are shown in the following graphic. The table shows the number of entries on which the scores are based.



Metric	Whole archive (#Entries)	Similar resolution (#Entries, resolution range(Å))
R_{free}	164625	8422 (1.70-1.66)
Clashscore	180529	1005 (1.68-1.68)
Ramachandran outliers	177936	9065 (1.70-1.66)
Sidechain outliers	177891	9064 (1.70-1.66)
RSRZ outliers	164620	8421 (1.70-1.66)

The table below summarises the geometric issues observed across the polymeric chains and their fit to the electron density. The red, orange, yellow and green segments of the lower bar indicate the fraction of residues that contain outliers for ≥ 3 , 2, 1 and 0 types of geometric quality criteria respectively. A grey segment represents the fraction of residues that are not modelled. The numeric value for each fraction is indicated below the corresponding segment, with a dot representing fractions $\leq 5\%$. The upper red bar (where present) indicates the fraction of residues that have poor fit to the electron density. The numeric value is given above the bar.

Mol	Chain	Length	Quality of chain
1	A	170	
1	B	170	
2	C	166	
2	D	166	

The following table lists non-polymeric compounds, carbohydrate monomers and non-standard

residues in protein, DNA, RNA chains that are outliers for geometric or electron-density-fit criteria:

Mol	Type	Chain	Res	Chirality	Geometry	Clashes	Electron density
5	A1AHB	C	201	X	-	-	-
5	A1AHB	D	201	X	-	-	-

2 Entry composition

There are 6 unique types of molecules in this entry. The entry contains 5797 atoms, of which 0 are hydrogens and 0 are deuteriums.

In the tables below, the ZeroOcc column contains the number of atoms modelled with zero occupancy, the AltConf column contains the number of residues with at least one atom in alternate conformation and the Trace column contains the number of residues modelled with at most 2 atoms.

- Molecule 1 is a protein called GTPase KRas.

Mol	Chain	Residues	Atoms					ZeroOcc	AltConf	Trace
1	A	169	Total	C	N	O	S	0	1	0
			1356	849	233	267	7			
1	B	169	Total	C	N	O	S	0	3	0
			1360	854	232	266	8			

There are 18 discrepancies between the modelled and reference sequences:

Chain	Residue	Modelled	Actual	Comment	Reference
A	0	SER	-	expression tag	UNP P01116
A	61	HIS	GLN	engineered mutation	UNP P01116
A	151	GLY	ARG	conflict	UNP P01116
A	153	ASP	GLU	conflict	UNP P01116
A	165	LYS	-	expression tag	UNP P01116
A	166	HIS	-	expression tag	UNP P01116
A	167	LYS	-	expression tag	UNP P01116
A	168	GLU	-	expression tag	UNP P01116
A	169	LYS	-	expression tag	UNP P01116
B	0	SER	-	expression tag	UNP P01116
B	61	HIS	GLN	engineered mutation	UNP P01116
B	151	GLY	ARG	conflict	UNP P01116
B	153	ASP	GLU	conflict	UNP P01116
B	165	LYS	-	expression tag	UNP P01116
B	166	HIS	-	expression tag	UNP P01116
B	167	LYS	-	expression tag	UNP P01116
B	168	GLU	-	expression tag	UNP P01116
B	169	LYS	-	expression tag	UNP P01116

- Molecule 2 is a protein called Peptidyl-prolyl cis-trans isomerase A.

Mol	Chain	Residues	Atoms					ZeroOcc	AltConf	Trace
2	C	163	Total	C	N	O	S	0	0	0
			1248	792	216	232	8			

Continued on next page...

Mol	Chain	Residues	Atoms					ZeroOcc	AltConf	Trace
2	D	162	Total	C	N	O	S	0	1	0
			1246	792	215	231	8			

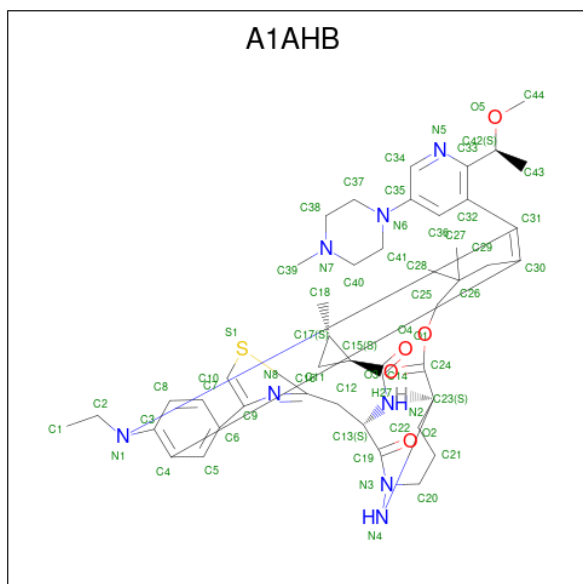
Chain	Residue	Modelled	Actual	Comment	Reference
C	0	SER	-	expression tag	UNP P62937
D	0	SER	-	expression tag	UNP P62937

-
- The chemical structure of GNP (Guanosine-5'-phosphate) is shown. It consists of a guanine base (a purine ring system with an amino group at position 2 and a carbonyl group at position 6) linked to a ribose sugar (a five-membered ring with hydroxyl groups at positions 2' and 3') via a glycosidic bond. The ribose sugar is further linked to a phosphate group (a phosphorus atom bonded to four oxygen atoms) via a phosphodiester bond. The phosphate group is shown in its fully protonated form, with all four oxygen atoms having a negative charge. The structure is labeled with atom names (N1, N2, N3, N4, N5, N6, N7, N8, N9, O1, O2, O3, O4, O5, O6, O7, O8, O9, O10, O11, O12, O13, O14, O15, O16, O17, O18, O19, O20, O21, O22, O23, O24, O25, O26, O27, O28, O29, O30, O31, O32, O33, O34, O35, O36, O37, O38, O39, O40, O41, O42, O43, O44, O45, O46, O47, O48, O49, O50, O51, O52, O53, O54, O55, O56, O57, O58, O59, O60, O61, O62, O63, O64, O65, O66, O67, O68, O69, O70, O71, O72, O73, O74, O75, O76, O77, O78, O79, O80, O81, O82, O83, O84, O85, O86, O87, O88, O89, O90, O91, O92, O93, O94, O95, O96, O97, O98, O99, O100, O101, O102, O103, O104, O105, O106, O107, O108, O109, O110, O111, O112, O113, O114, O115, O116, O117, O118, O119, O120, O121, O122, O123, O124, O125, O126, O127, O128, O129, O130, O131, O132, O133, O134, O135, O136, O137, O138, O139, O140, O141, O142, O143, O144, O145, O146, O147, O148, O149, O150, O151, O152, O153, O154, O155, O156, O157, O158, O159, O160, O161, O162, O163, O164, O165, O166, O167, O168, O169, O170, O171, O172, O173, O174, O175, O176, O177, O178, O179, O180, O181, O182, O183, O184, O185, O186, O187, O188, O189, O190, O191, O192, O193, O194, O195, O196, O197, O198, O199, O200, O201, O202, O203, O204, O205, O206, O207, O208, O209, O210, O211, O212, O213, O214, O215, O216, O217, O218, O219, O220, O221, O222, O223, O224, O225, O226, O227, O228, O229, O230, O231, O232, O233, O234, O235, O236, O237, O238, O239, O240, O241, O242, O243, O244, O245, O246, O247, O248, O249, O250, O251, O252, O253, O254, O255, O256, O257, O258, O259, O260, O261, O262, O263, O264, O265, O266, O267, O268, O269, O270, O271, O272, O273, O274, O275, O276, O277, O278, O279, O280, O281, O282, O283, O284, O285, O286, O287, O288, O289, O290, O291, O292, O293, O294, O295, O296, O297, O298, O299, O300, O301, O302, O303, O304, O305, O306, O307, O308, O309, O310, O311, O312, O313, O314, O315, O316, O317, O318, O319, O320, O321, O322, O323, O324, O325, O326, O327, O328, O329, O330, O331, O332, O333, O334, O335, O336, O337, O338, O339, O340, O341, O342, O343, O344, O345, O346, O347, O348, O349, O350, O351, O352, O353, O354, O355, O356, O357, O358, O359, O360, O361, O362, O363, O364, O365, O366, O367, O368, O369, O370, O371, O372, O373, O374, O375, O376, O377, O378, O379, O380, O381, O382, O383, O384, O385, O386, O387, O388, O389, O390, O391, O392, O393, O394, O395, O396, O397, O398, O399, O400, O401, O402, O403, O404, O405, O406, O407, O408, O409, O410, O411, O412, O413, O414, O415, O416, O417, O418, O419, O420, O421, O422, O423, O424, O425, O426, O427, O428, O429, O430, O431, O432, O433, O434, O435, O436, O437, O438, O439, O440, O441, O442, O443, O444, O445, O446, O447, O448, O449, O450, O451, O452, O453, O454, O455, O456, O457, O458, O459, O460, O461, O462, O463, O464, O465, O466, O467, O468, O469, O470, O471, O472, O473, O474, O475, O476, O477, O478, O479, O480, O481, O482, O483, O484, O485, O486, O487, O488, O489, O490, O491, O492, O493, O494, O495, O496, O497, O498, O499, O500, O501, O502, O503, O504, O505, O506, O507, O508, O509, O510, O511, O512, O513, O514, O515, O516, O517, O518, O519, O520, O521, O522, O523, O524, O525, O526, O527, O528, O529, O530, O531, O532, O533, O534, O535, O536, O537, O538, O539, O540, O541, O542, O543, O544, O545, O546, O547, O548, O549, O550, O551, O552, O553, O554, O555, O556, O557, O558, O559, O560, O561, O562, O563, O564, O565, O566, O567, O568, O569, O570, O571, O572, O573, O574, O575, O576, O577, O578, O579, O580, O581, O582, O583, O584, O585, O586, O587, O588, O589, O590, O591, O592, O593, O594, O595, O596, O597, O598, O599, O600, O601, O602, O603, O604, O605, O606, O607, O608, O609, O610, O611, O612, O613, O614, O615, O616, O617, O618, O619, O620, O621, O622, O623, O624, O625, O626, O627, O628, O629, O630, O631, O632, O633, O634, O635, O636, O637, O638, O639, O640, O641, O642, O643, O644, O645, O646, O647, O648, O649, O650, O651, O652, O653, O654, O655, O656, O657, O658, O659, O660, O661, O662, O663, O664, O665, O666, O667, O668, O669, O670, O671, O672, O673, O674, O675, O676, O677, O678, O679, O680, O681, O682, O683, O684, O685, O686, O687, O688, O689, O690, O691, O692, O693, O694, O695, O696, O697, O698, O699, O700, O701, O702, O703, O704, O705, O706, O707, O708, O709, O710, O711, O712, O713, O714, O715, O716, O717, O718, O719, O720, O721, O722, O723, O724, O725, O726, O727, O728, O729, O730, O731, O732, O733, O734, O735, O736, O737, O738, O739, O740, O741, O742, O743, O744, O745, O746, O747, O748, O749, O750, O751, O752, O753, O754, O755, O756, O757, O758, O759, O760, O761, O762, O763, O764, O765, O766, O767, O768, O769, O770, O771, O772, O773, O774, O775, O776, O777, O778, O779, O780, O781, O782, O783, O784, O785, O786, O787, O788, O789, O790, O791, O792, O793, O794, O795, O796, O797, O798, O799,

Mol	Chain	Residues	Atoms					ZeroOcc	AltConf
3	A	1	Total 32	C 10	N 6	O 13	P 3	0	0
3	B	1	Total 32	C 10	N 6	O 13	P 3	0	0

- | Mol | Chain | Residues | Atoms | ZeroOcc | AltConf |
|-----|-------|----------|-----------------|---------|---------|
| 4 | A | 1 | Total Mg
1 1 | 0 | 0 |
| 4 | B | 1 | Total Mg
1 1 | 0 | 0 |

- Molecule 5 is (1R,2S)-N-[(1P,7S,9S,13R,20M)-21-ethyl-20-{2-[(1R)-1-methoxyethyl]-5-(4-methylpiperazin-1-yl)pyridin-3-yl}-17,17-dimethyl-8,14-dioxo-15-oxa-4-thia-9,21,27,28-tetraazapentacyclo[17.5.2.1 2,5 .1 9,13 .0 22,26]octacos-1(24),2,5(28),19,22,25-hexaen-7-yl]-2-methylcyclopropane-1-carboxamide (three-letter code: A1AHB) (formula: C₄₄H₅₈N₈O₅S) (labeled as "Ligand of Interest" by depositor).



Mol	Chain	Residues	Atoms					ZeroOcc	AltConf
5	C	1	Total	C	N	O	S	0	0
			58	44	8	5	1		
5	D	1	Total	C	N	O	S	0	0
			58	44	8	5	1		

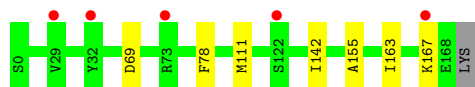
- Molecule 6 is water.

Mol	Chain	Residues	Atoms		ZeroOcc	AltConf
6	A	98	Total	O	0	0
			98	98		
6	B	91	Total	O	0	0
			91	91		
6	C	105	Total	O	0	0
			105	105		
6	D	110	Total	O	0	1
			111	111		

3 Residue-property plots [i](#)

These plots are drawn for all protein, RNA, DNA and oligosaccharide chains in the entry. The first graphic for a chain summarises the proportions of the various outlier classes displayed in the second graphic. The second graphic shows the sequence view annotated by issues in geometry and electron density. Residues are color-coded according to the number of geometric quality criteria for which they contain at least one outlier: green = 0, yellow = 1, orange = 2 and red = 3 or more. A red dot above a residue indicates a poor fit to the electron density ($RSRZ > 2$). Stretches of 2 or more consecutive residues without any outlier are shown as a green connector. Residues present in the sample, but not in the model, are shown in grey.

- Molecule 1: GTPase KRas



- Molecule 1: GTPase KRas



- Molecule 2: Peptidyl-prolyl cis-trans isomerase A



- Molecule 2: Peptidyl-prolyl cis-trans isomerase A



4 Data and refinement statistics

Property	Value	Source
Space group	P 21 21 21	Depositor
Cell constants a, b, c, α , β , γ	65.15Å 80.60Å 127.27Å 90.00° 90.00° 90.00°	Depositor
Resolution (Å)	39.64 – 1.68 39.64 – 1.68	Depositor EDS
% Data completeness (in resolution range)	99.6 (39.64-1.68) 99.6 (39.64-1.68)	Depositor EDS
R_{merge}	0.11	Depositor
R_{sym}	(Not available)	Depositor
$\langle I/\sigma(I) \rangle$ ¹	1.15 (at 1.68Å)	Xtriage
Refinement program	PHENIX 1.20.1_4487	Depositor
R, R_{free}	0.198 , 0.230 0.198 , 0.230	Depositor DCC
R_{free} test set	3883 reflections (5.06%)	wwPDB-VP
Wilson B-factor (Å ²)	26.1	Xtriage
Anisotropy	0.402	Xtriage
Bulk solvent k_{sol} (e/Å ³), B_{sol} (Å ²)	0.34 , 26.3	EDS
L-test for twinning ²	$\langle L \rangle = 0.50$, $\langle L^2 \rangle = 0.33$	Xtriage
Estimated twinning fraction	No twinning to report.	Xtriage
F_o, F_c correlation	0.96	EDS
Total number of atoms	5797	wwPDB-VP
Average B, all atoms (Å ²)	31.0	wwPDB-VP

Xtriage's analysis on translational NCS is as follows: *The largest off-origin peak in the Patterson function is 4.17% of the height of the origin peak. No significant pseudotranslation is detected.*

¹Intensities estimated from amplitudes.

²Theoretical values of $\langle |L| \rangle$, $\langle L^2 \rangle$ for acentric reflections are 0.5, 0.333 respectively for untwinned datasets, and 0.375, 0.2 for perfectly twinned datasets.

5 Model quality [i](#)

5.1 Standard geometry [i](#)

Bond lengths and bond angles in the following residue types are not validated in this section: MG, GNP, A1AHB

The Z score for a bond length (or angle) is the number of standard deviations the observed value is removed from the expected value. A bond length (or angle) with $|Z| > 5$ is considered an outlier worth inspection. RMSZ is the root-mean-square of all Z scores of the bond lengths (or angles).

Mol	Chain	Bond lengths		Bond angles	
		RMSZ	$\# Z > 5$	RMSZ	$\# Z > 5$
1	A	0.37	0/1378	0.57	0/1859
1	B	0.37	0/1391	0.60	0/1877
2	C	0.40	0/1276	0.59	0/1711
2	D	0.42	0/1277	0.59	0/1712
All	All	0.39	0/5322	0.59	0/7159

There are no bond length outliers.

There are no bond angle outliers.

There are no chirality outliers.

There are no planarity outliers.

5.2 Too-close contacts [i](#)

In the following table, the Non-H and H(model) columns list the number of non-hydrogen atoms and hydrogen atoms in the chain respectively. The H(added) column lists the number of hydrogen atoms added and optimized by MolProbity. The Clashes column lists the number of clashes within the asymmetric unit, whereas Symm-Clashes lists symmetry-related clashes.

Mol	Chain	Non-H	H(model)	H(added)	Clashes	Symm-Clashes
1	A	1356	0	1333	3	0
1	B	1360	0	1348	6	0
2	C	1248	0	1219	1	0
2	D	1246	0	1221	0	0
3	A	32	0	13	0	0
3	B	32	0	13	0	0
4	A	1	0	0	0	0
4	B	1	0	0	0	0
5	C	58	0	0	0	0

Continued on next page...

Continued from previous page...

Mol	Chain	Non-H	H(model)	H(added)	Clashes	Symm-Clashes
5	D	58	0	0	0	0
6	A	98	0	0	0	0
6	B	91	0	0	2	0
6	C	105	0	0	1	0
6	D	111	0	0	0	0
All	All	5797	0	5147	10	0

The all-atom clashscore is defined as the number of clashes found per 1000 atoms (including hydrogen atoms). The all-atom clashscore for this structure is 1.

All (10) close contacts within the same asymmetric unit are listed below, sorted by their clash magnitude.

Atom-1	Atom-2	Interatomic distance (Å)	Clash overlap (Å)
1:B:72:MET:O	1:B:104:LYS:HD3	2.00	0.60
1:B:118[B]:CYS:SG	1:B:143:GLU:HB3	2.41	0.60
1:A:142:ILE:HD12	1:A:155:ALA:HA	1.88	0.56
1:A:163:ILE:HG22	1:A:167:LYS:HD2	1.94	0.49
1:B:149:ARG:NH2	6:B:308:HOH:O	2.46	0.48
1:B:99:GLN:O	1:B:103:VAL:HG22	2.15	0.47
2:C:99:SER:HB3	2:C:113:PHE:CZ	2.51	0.46
1:A:78:PHE:HB2	1:A:111:MET:HG2	2.02	0.42
1:B:142[B]:ILE:HD12	6:B:368:HOH:O	2.19	0.42
1:B:34:PRO:HD2	6:C:301:HOH:O	2.19	0.42

There are no symmetry-related clashes.

5.3 Torsion angles [i](#)

5.3.1 Protein backbone [i](#)

In the following table, the Percentiles column shows the percent Ramachandran outliers of the chain as a percentile score with respect to all X-ray entries followed by that with respect to entries of similar resolution.

The Analysed column shows the number of residues for which the backbone conformation was analysed, and the total number of residues.

Mol	Chain	Analysed	Favoured	Allowed	Outliers	Percentiles	
1	A	168/170 (99%)	165 (98%)	3 (2%)	0	100	100
1	B	170/170 (100%)	166 (98%)	4 (2%)	0	100	100

Continued on next page...

Continued from previous page...

Mol	Chain	Analysed	Favoured	Allowed	Outliers	Percentiles	
2	C	161/166 (97%)	157 (98%)	4 (2%)	0	100	100
2	D	161/166 (97%)	157 (98%)	4 (2%)	0	100	100
All	All	660/672 (98%)	645 (98%)	15 (2%)	0	100	100

There are no Ramachandran outliers to report.

5.3.2 Protein sidechains ⓘ

In the following table, the Percentiles column shows the percent sidechain outliers of the chain as a percentile score with respect to all X-ray entries followed by that with respect to entries of similar resolution.

The Analysed column shows the number of residues for which the sidechain conformation was analysed, and the total number of residues.

Mol	Chain	Analysed	Rotameric	Outliers	Percentiles	
1	A	150/150 (100%)	149 (99%)	1 (1%)	81	74
1	B	152/150 (101%)	149 (98%)	3 (2%)	50	32
2	C	131/134 (98%)	130 (99%)	1 (1%)	79	70
2	D	131/134 (98%)	128 (98%)	3 (2%)	45	26
All	All	564/568 (99%)	556 (99%)	8 (1%)	62	47

All (8) residues with a non-rotameric sidechain are listed below:

Mol	Chain	Res	Type
1	A	69	ASP
1	B	6	LEU
1	B	32	TYR
1	B	122	SER
2	C	61	MET
2	D	29	VAL
2	D	61	MET
2	D	81	GLU

Sometimes sidechains can be flipped to improve hydrogen bonding and reduce clashes. There are no such sidechains identified.

5.3.3 RNA [i](#)

There are no RNA molecules in this entry.

5.4 Non-standard residues in protein, DNA, RNA chains [i](#)

There are no non-standard protein/DNA/RNA residues in this entry.

5.5 Carbohydrates [i](#)

There are no oligosaccharides in this entry.

5.6 Ligand geometry [i](#)

Of 6 ligands modelled in this entry, 2 are monoatomic - leaving 4 for Mogul analysis.

In the following table, the Counts columns list the number of bonds (or angles) for which Mogul statistics could be retrieved, the number of bonds (or angles) that are observed in the model and the number of bonds (or angles) that are defined in the Chemical Component Dictionary. The Link column lists molecule types, if any, to which the group is linked. The Z score for a bond length (or angle) is the number of standard deviations the observed value is removed from the expected value. A bond length (or angle) with $|Z| > 2$ is considered an outlier worth inspection. RMSZ is the root-mean-square of all Z scores of the bond lengths (or angles).

Mol	Type	Chain	Res	Link	Bond lengths			Bond angles		
					Counts	RMSZ	$\# Z > 2$	Counts	RMSZ	$\# Z > 2$
5	A1AHB	C	201	-	56,65,65	0.75	1 (1%)	64,97,97	1.02	4 (6%)
3	GNP	B	201	4	29,34,34	1.58	6 (20%)	33,54,54	2.29	8 (24%)
3	GNP	A	201	4	29,34,34	1.74	7 (24%)	33,54,54	2.21	7 (21%)
5	A1AHB	D	201	-	56,65,65	0.77	2 (3%)	64,97,97	1.04	3 (4%)

In the following table, the Chirals column lists the number of chiral outliers, the number of chiral centers analysed, the number of these observed in the model and the number defined in the Chemical Component Dictionary. Similar counts are reported in the Torsion and Rings columns. '-' means no outliers of that kind were identified.

Mol	Type	Chain	Res	Link	Chirals	Torsions	Rings
5	A1AHB	C	201	-	1/1/12/14	5/51/80/80	0/6/8/8
5	A1AHB	D	201	-	1/1/12/14	4/51/80/80	0/6/8/8
3	GNP	A	201	4	-	5/14/38/38	0/3/3/3
3	GNP	B	201	4	-	3/14/38/38	0/3/3/3

All (16) bond length outliers are listed below:

Mol	Chain	Res	Type	Atoms	Z	Observed(Å)	Ideal(Å)
3	A	201	GNP	PB-O1B	4.15	1.52	1.46
3	A	201	GNP	PB-O3A	4.12	1.64	1.59
3	B	201	GNP	C6-N1	3.76	1.39	1.33
3	A	201	GNP	C6-N1	3.48	1.39	1.33
3	B	201	GNP	PB-O3A	3.38	1.63	1.59
3	A	201	GNP	PG-O1G	3.31	1.51	1.46
3	A	201	GNP	PG-N3B	3.26	1.71	1.63
3	B	201	GNP	PG-O1G	3.24	1.51	1.46
3	B	201	GNP	PB-O1B	3.03	1.50	1.46
3	B	201	GNP	PG-N3B	2.84	1.70	1.63
5	C	201	A1AHB	C12-C11	2.20	1.51	1.49
5	D	201	A1AHB	C15-C14	-2.16	1.48	1.51
3	A	201	GNP	PB-O2B	-2.07	1.51	1.56
5	D	201	A1AHB	C19-N3	2.04	1.38	1.35
3	A	201	GNP	C5-C6	2.03	1.44	1.41
3	B	201	GNP	C5-C6	2.02	1.44	1.41

All (22) bond angle outliers are listed below:

Mol	Chain	Res	Type	Atoms	Z	Observed(°)	Ideal(°)
3	B	201	GNP	C5-C6-N1	-8.62	111.89	123.42
3	A	201	GNP	C5-C6-N1	-8.54	112.00	123.42
3	A	201	GNP	C2-N1-C6	6.68	125.25	115.96
3	B	201	GNP	C2-N1-C6	6.57	125.09	115.96
5	D	201	A1AHB	C41-N6-C37	3.85	120.24	111.57
5	C	201	A1AHB	C41-N6-C37	3.23	118.84	111.57
3	B	201	GNP	O2B-PB-O1B	3.06	116.44	109.87
3	B	201	GNP	O1G-PG-N3B	-3.06	107.27	111.77
3	B	201	GNP	N3-C2-N1	-2.91	123.51	127.21
3	A	201	GNP	N3-C2-N1	-2.89	123.53	127.21
3	A	201	GNP	O2G-PG-O3G	2.80	115.12	107.59
3	B	201	GNP	O3G-PG-O1G	-2.48	107.23	113.45
3	A	201	GNP	O1G-PG-N3B	-2.42	108.21	111.77
5	C	201	A1AHB	C21-C20-N3	-2.39	105.55	110.54
5	D	201	A1AHB	C31-C32-C33	2.37	123.96	119.86
3	B	201	GNP	C2-N3-C4	-2.33	112.97	115.48
3	A	201	GNP	C2-N3-C4	-2.29	113.01	115.48
5	C	201	A1AHB	C31-C32-C33	2.29	123.82	119.86
3	B	201	GNP	O2A-PA-O1A	2.08	122.12	112.44
3	A	201	GNP	C4-C5-C6	-2.04	118.11	121.23
5	D	201	A1AHB	C32-C31-C30	-2.04	126.14	129.40
5	C	201	A1AHB	C38-C37-N6	2.01	115.02	110.78

All (2) chirality outliers are listed below:

Mol	Chain	Res	Type	Atom
5	C	201	A1AHB	N3
5	D	201	A1AHB	N3

All (17) torsion outliers are listed below:

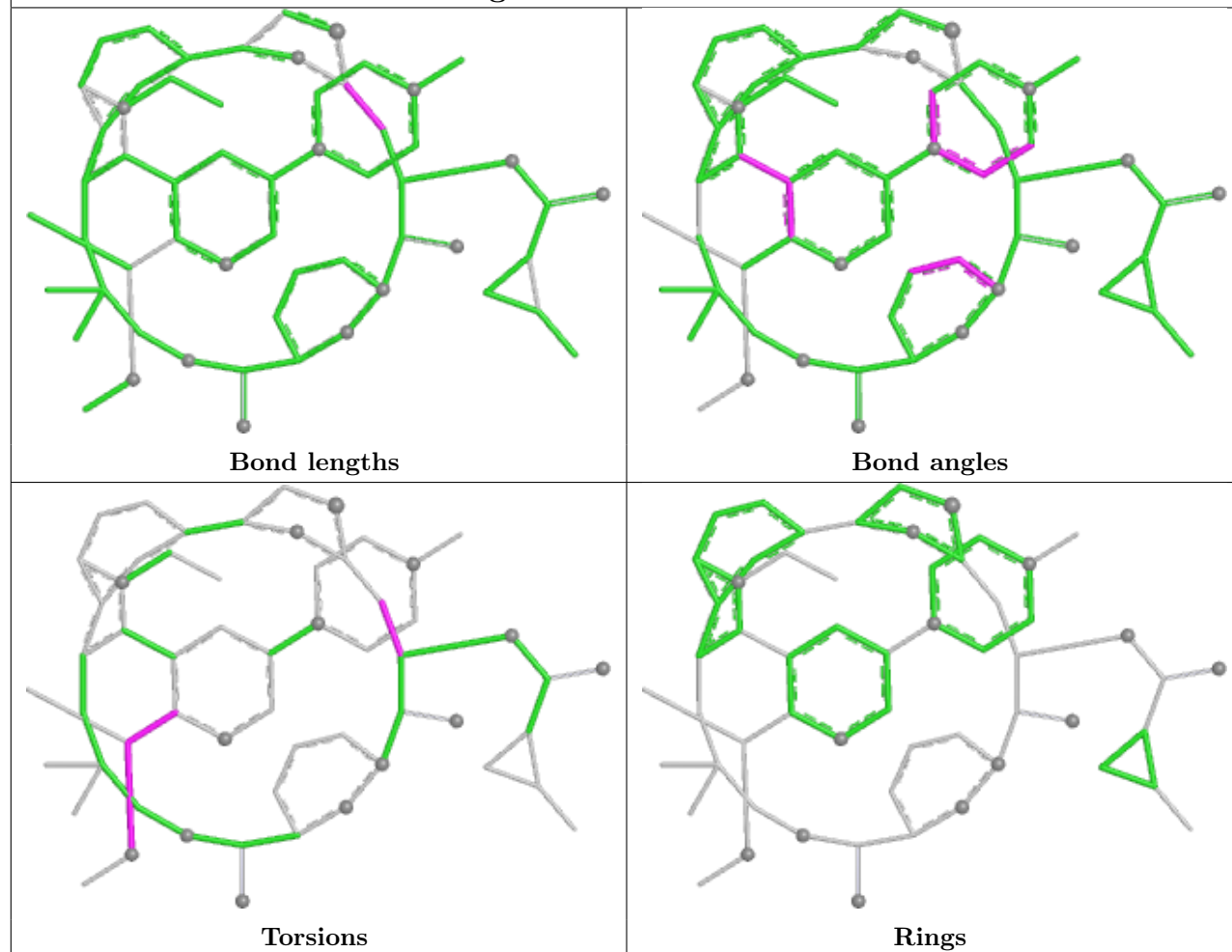
Mol	Chain	Res	Type	Atoms
3	A	201	GNP	PB-N3B-PG-O1G
3	A	201	GNP	PG-N3B-PB-O1B
3	A	201	GNP	PA-O3A-PB-O2B
3	B	201	GNP	PB-N3B-PG-O1G
3	B	201	GNP	PG-N3B-PB-O1B
5	C	201	A1AHB	C11-C12-C13-N2
5	D	201	A1AHB	C32-C33-C42-C43
5	C	201	A1AHB	C11-C12-C13-C19
5	C	201	A1AHB	C32-C33-C42-C43
5	C	201	A1AHB	C32-C33-C42-O5
5	D	201	A1AHB	C32-C33-C42-O5
5	C	201	A1AHB	C33-C42-O5-C44
5	D	201	A1AHB	C33-C42-O5-C44
5	D	201	A1AHB	C11-C12-C13-C19
3	B	201	GNP	PG-N3B-PB-O3A
3	A	201	GNP	PA-O3A-PB-O1B
3	A	201	GNP	PG-N3B-PB-O3A

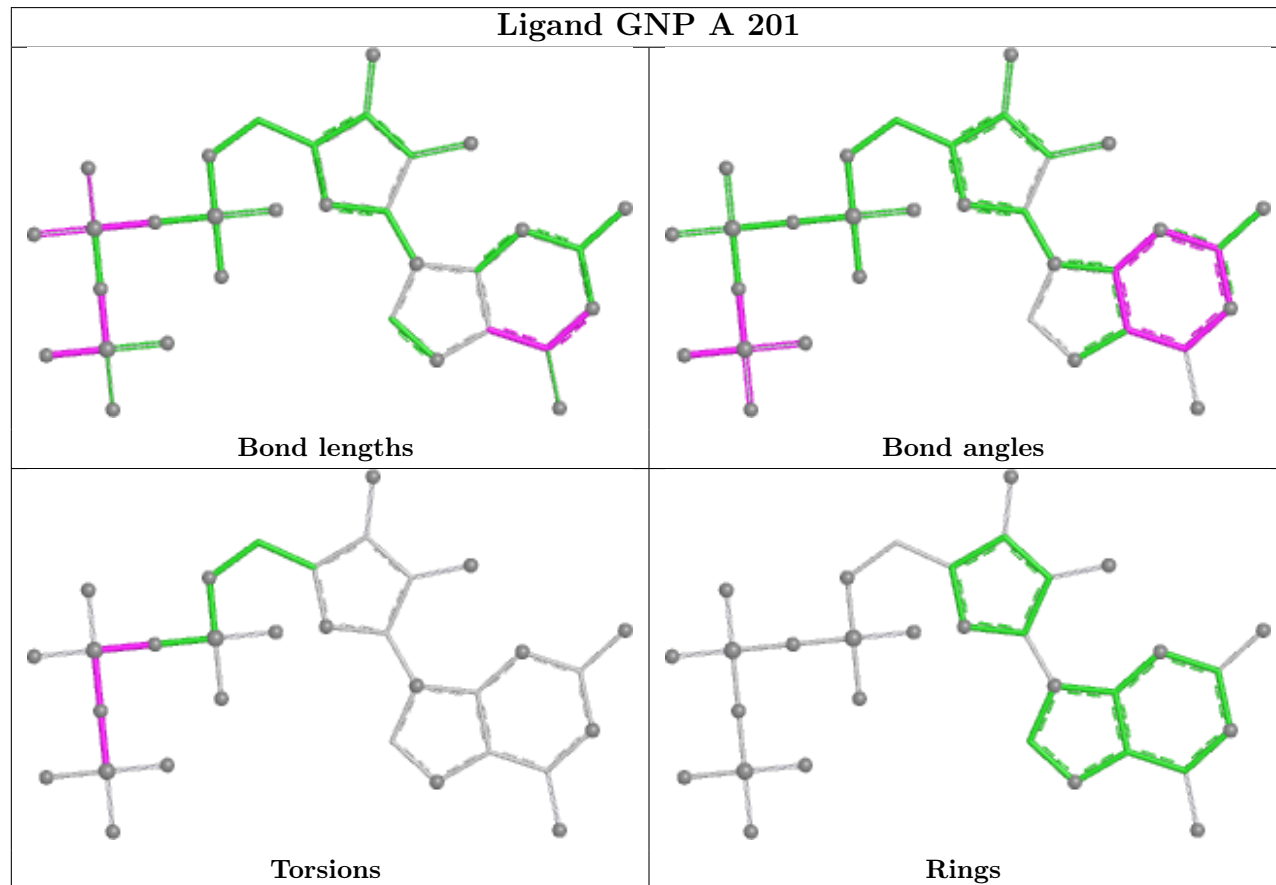
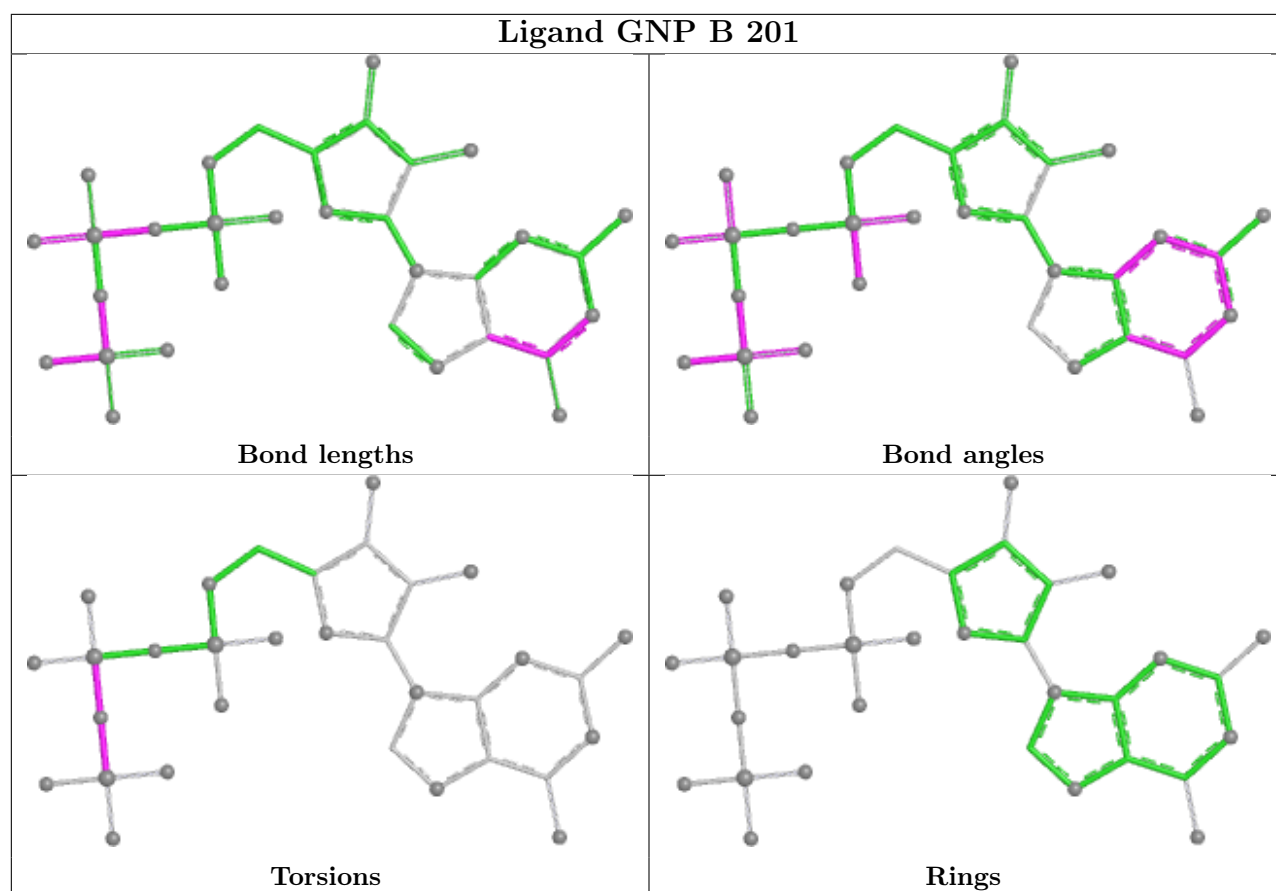
There are no ring outliers.

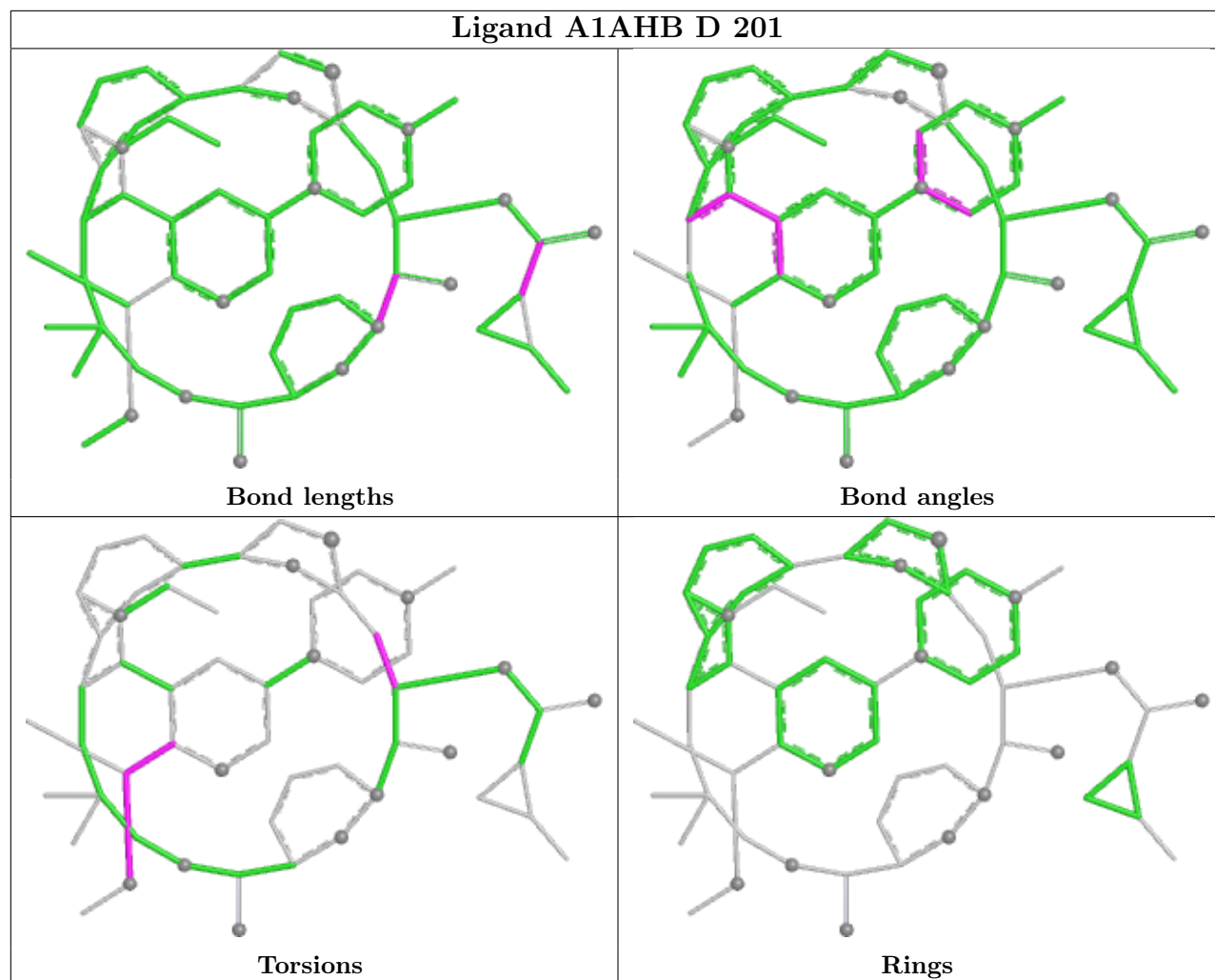
No monomer is involved in short contacts.

The following is a two-dimensional graphical depiction of Mogul quality analysis of bond lengths, bond angles, torsion angles, and ring geometry for all instances of the Ligand of Interest. In addition, ligands with molecular weight > 250 and outliers as shown on the validation Tables will also be included. For torsion angles, if less than 5% of the Mogul distribution of torsion angles is within 10 degrees of the torsion angle in question, then that torsion angle is considered an outlier. Any bond that is central to one or more torsion angles identified as an outlier by Mogul will be highlighted in the graph. For rings, the root-mean-square deviation (RMSD) between the ring in question and similar rings identified by Mogul is calculated over all ring torsion angles. If the average RMSD is greater than 60 degrees and the minimal RMSD between the ring in question and any Mogul-identified rings is also greater than 60 degrees, then that ring is considered an outlier. The outliers are highlighted in purple. The color gray indicates Mogul did not find sufficient equivalents in the CSD to analyse the geometry.

Ligand A1AHB C 201







5.7 Other polymers [i](#)

There are no such residues in this entry.

5.8 Polymer linkage issues [i](#)

There are no chain breaks in this entry.

6 Fit of model and data [i](#)

6.1 Protein, DNA and RNA chains [i](#)

In the following table, the column labelled ‘#RSRZ > 2’ contains the number (and percentage) of RSRZ outliers, followed by percent RSRZ outliers for the chain as percentile scores relative to all X-ray entries and entries of similar resolution. The OWAB column contains the minimum, median, 95th percentile and maximum values of the occupancy-weighted average B-factor per residue. The column labelled ‘Q < 0.9’ lists the number of (and percentage) of residues with an average occupancy less than 0.9.

Mol	Chain	Analysed	<RSRZ>	#RSRZ>2	OWAB(Å ²)	Q<0.9
1	A	169/170 (99%)	0.35	5 (2%) 52 56	12, 32, 49, 63	1 (0%)
1	B	169/170 (99%)	0.46	4 (2%) 59 63	17, 31, 50, 75	3 (1%)
2	C	163/166 (98%)	-0.01	2 (1%) 76 79	20, 28, 40, 58	0
2	D	162/166 (97%)	-0.12	1 (0%) 85 88	14, 25, 36, 45	1 (0%)
All	All	663/672 (98%)	0.18	12 (1%) 67 71	12, 29, 47, 75	5 (0%)

All (12) RSRZ outliers are listed below:

Mol	Chain	Res	Type	RSRZ
1	B	71	TYR	4.0
1	B	122	SER	4.0
1	A	32	TYR	3.9
2	C	2	VAL	3.2
1	A	29	VAL	3.1
2	C	164	LEU	2.9
1	B	66	ALA	2.8
1	A	122	SER	2.5
1	A	73	ARG	2.5
2	D	151	LYS	2.4
1	A	167	LYS	2.2
1	B	168	GLU	2.2

6.2 Non-standard residues in protein, DNA, RNA chains [i](#)

There are no non-standard protein/DNA/RNA residues in this entry.

6.3 Carbohydrates [i](#)

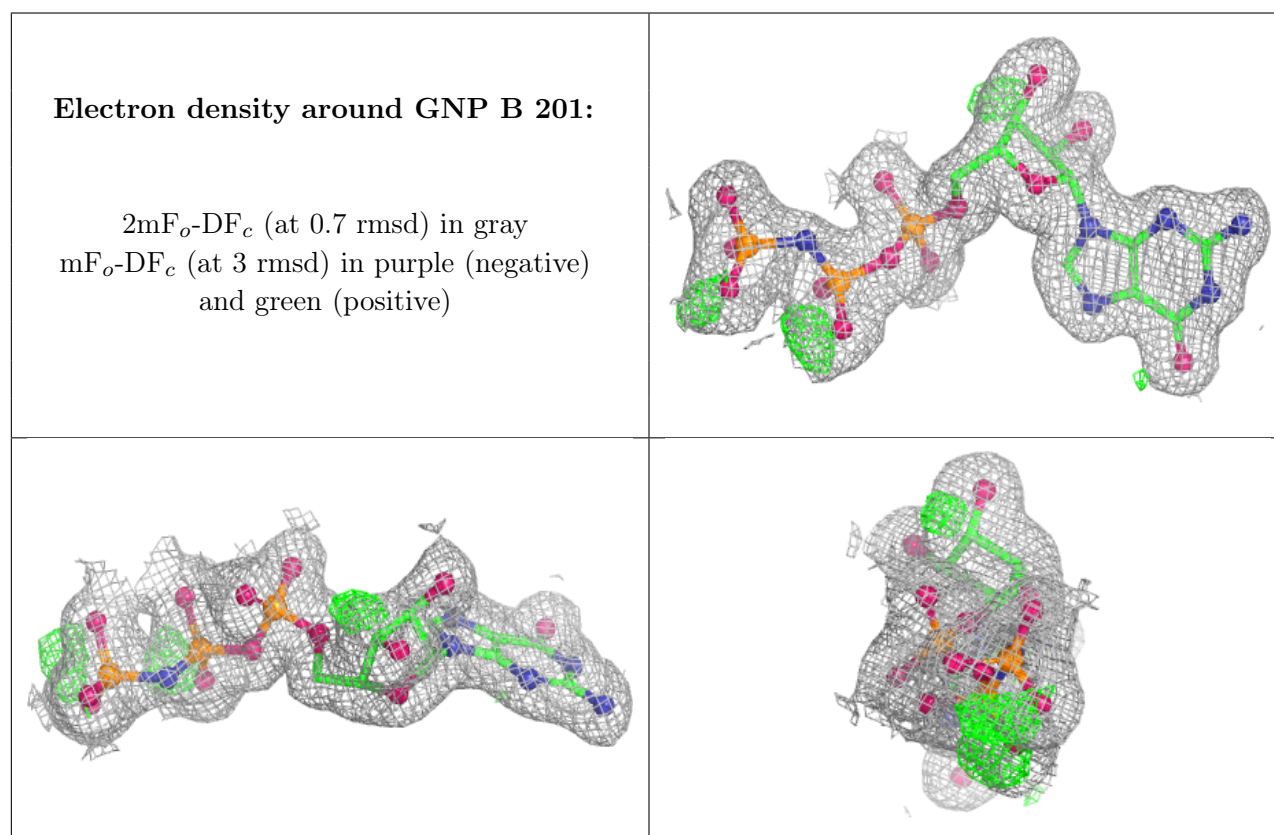
There are no monosaccharides in this entry.

6.4 Ligands [i](#)

In the following table, the Atoms column lists the number of modelled atoms in the group and the number defined in the chemical component dictionary. The B-factors column lists the minimum, median, 95th percentile and maximum values of B factors of atoms in the group. The column labelled 'Q< 0.9' lists the number of atoms with occupancy less than 0.9.

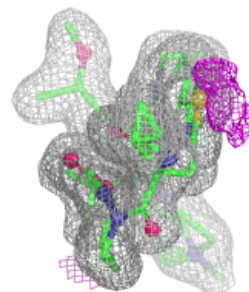
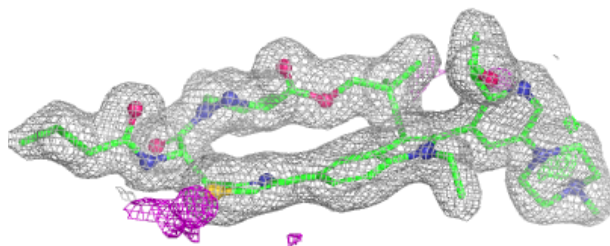
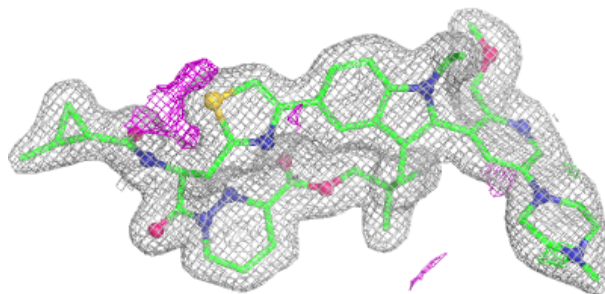
Mol	Type	Chain	Res	Atoms	RSCC	RSR	B-factors(\AA^2)	Q<0.9
3	GNP	B	201	32/32	0.96	0.06	21,24,27,27	0
5	A1AHB	C	201	58/58	0.96	0.07	18,23,33,43	0
5	A1AHB	D	201	58/58	0.97	0.06	19,22,30,31	0
3	GNP	A	201	32/32	0.98	0.05	23,25,28,33	0
4	MG	B	202	1/1	0.98	0.03	22,22,22,22	0
4	MG	A	202	1/1	0.99	0.03	23,23,23,23	0

The following is a graphical depiction of the model fit to experimental electron density of all instances of the Ligand of Interest. In addition, ligands with molecular weight > 250 and outliers as shown on the geometry validation Tables will also be included. Each fit is shown from different orientation to approximate a three-dimensional view.

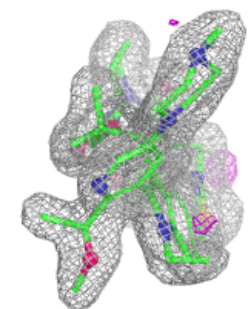
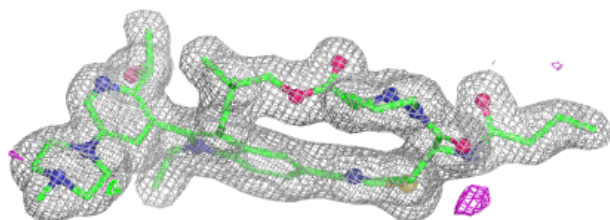
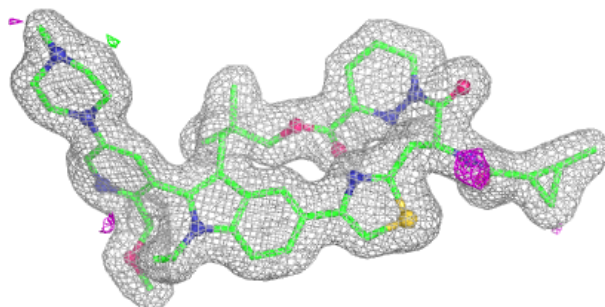


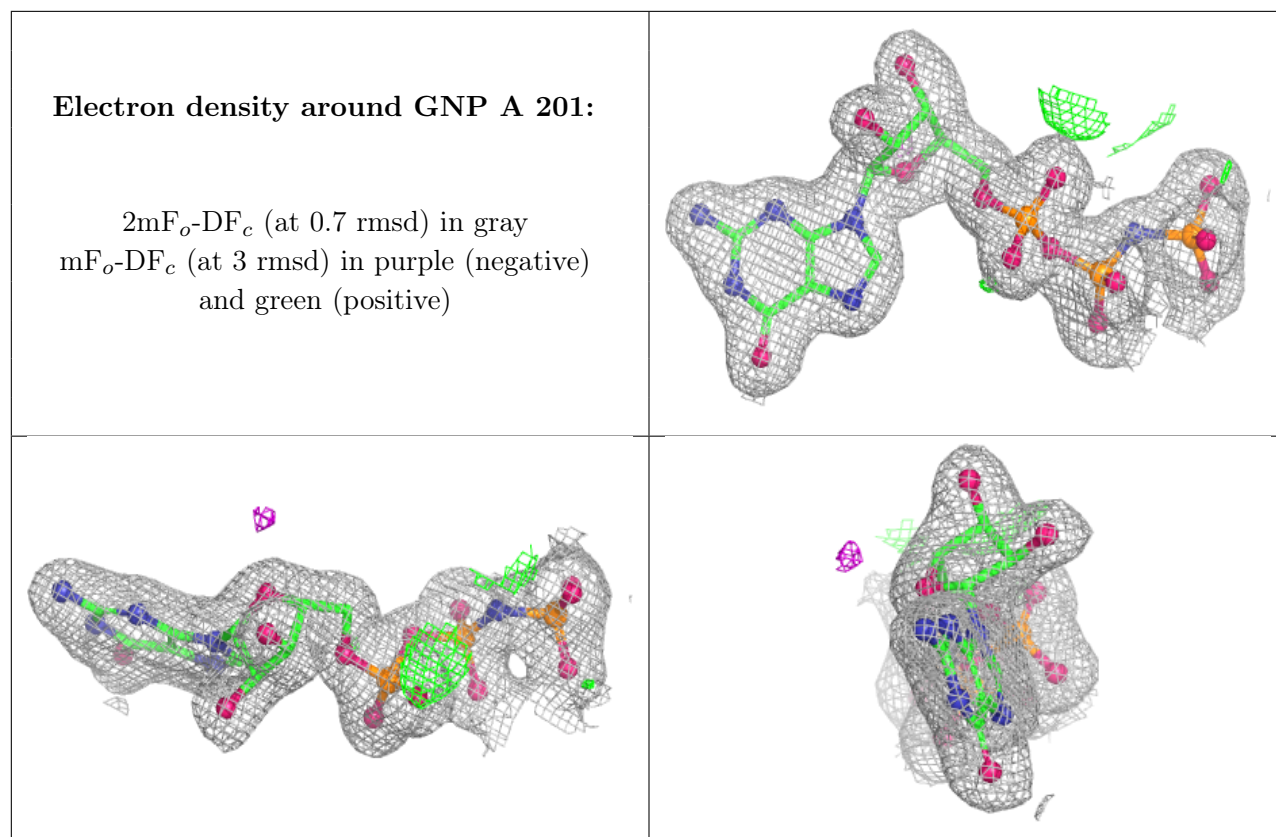
Electron density around A1AHB C 201:

$2mF_o-DF_c$ (at 0.7 rmsd) in gray
 mF_o-DF_c (at 3 rmsd) in purple (negative)
and green (positive)

**Electron density around A1AHB D 201:**

$2mF_o-DF_c$ (at 0.7 rmsd) in gray
 mF_o-DF_c (at 3 rmsd) in purple (negative)
and green (positive)





6.5 Other polymers [i](#)

There are no such residues in this entry.