



# wwPDB X-ray Structure Validation Summary Report ⓘ

Mar 9, 2026 – 06:30 PM UTC

PDB ID : 22WM / pdb\_000022wm  
Title : Phosphoglycerate mutase 1 complexed with a fragment  
Authors : Li, S.; Zhou, L.  
Deposited on : 2026-01-26  
Resolution : 1.91 Å(reported)

This is a wwPDB X-ray Structure Validation Summary Report for a publicly released PDB entry.

We welcome your comments at [validation@mail.wwpdb.org](mailto:validation@mail.wwpdb.org)

A user guide is available at

<https://www.wwpdb.org/validation/2017/XrayValidationReportHelp>

with specific help available everywhere you see the ⓘ symbol.

The types of validation reports are described at

<http://www.wwpdb.org/validation/2017/FAQs#types>.

---

The following versions of software and data (see [references ⓘ](#)) were used in the production of this report:

MolProbity : 4-5-2 with Phenix2.0  
Mogul : 2022.3.0, CSD as543be (2022)  
Xtriage (Phenix) : 2.0  
EDS : 3.0  
Buster-report : wwPDB partial adaption of 1.1.7 (2018)  
Percentile statistics : 20250101.v01 (using entries in the PDB archive January 1st 2025)  
CCP4 : 9.0.010 (Gargrove)  
Density-Fitness : 1.0.12  
Ideal geometry (proteins) : Engh & Huber (2001)  
Ideal geometry (DNA, RNA) : Parkinson et al. (1996)  
Validation Pipeline (wwPDB-VP) : 2.49

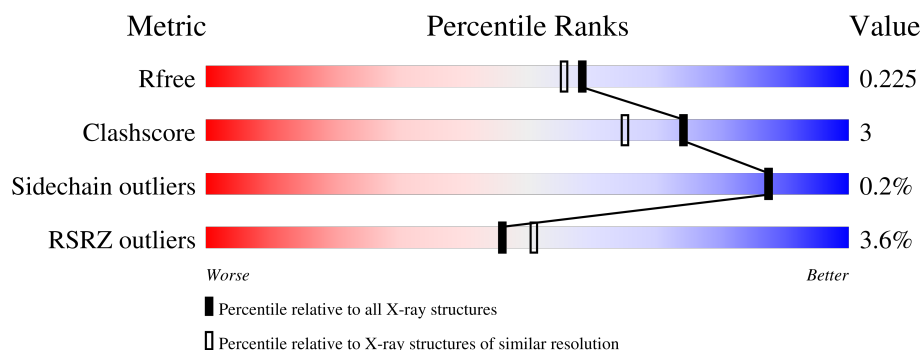
# 1 Overall quality at a glance

The following experimental techniques were used to determine the structure:

*X-RAY DIFFRACTION*

The reported resolution of this entry is 1.91 Å.

Percentile scores (ranging between 0-100) for global validation metrics of the entry are shown in the following graphic. The table shows the number of entries on which the scores are based.



Metric	Whole archive (#Entries)	Similar resolution (#Entries, resolution range(Å))
$R_{free}$	180053	1188 (1.92-1.92)
Clashscore	190562	1209 (1.92-1.92)
Sidechain outliers	187428	1195 (1.92-1.92)
RSRZ outliers	180081	1188 (1.92-1.92)

The table below summarises the geometric issues observed across the polymeric chains and their fit to the electron density. The red, orange, yellow and green segments of the lower bar indicate the fraction of residues that contain outliers for  $\geq 3$ , 2, 1 and 0 types of geometric quality criteria respectively. A grey segment represents the fraction of residues that are not modelled. The numeric value for each fraction is indicated below the corresponding segment, with a dot representing fractions  $\leq 5\%$ . The upper red bar (where present) indicates the fraction of residues that have poor fit to the electron density. The numeric value is given above the bar.

Mol	Chain	Length	Quality of chain
1	B	262	<div> <div>3%</div> <div> <div></div> <div>84%</div> <div>7%</div> <div>10%</div> </div> </div>
1	C	262	<div> <div>3%</div> <div> <div></div> <div>84%</div> <div>7%</div> <div>8%</div> </div> </div>

## 2 Entry composition

There are 6 unique types of molecules in this entry. The entry contains 4228 atoms, of which 109 are hydrogens and 0 are deuteriums.

In the tables below, the ZeroOcc column contains the number of atoms modelled with zero occupancy, the AltConf column contains the number of residues with at least one atom in alternate conformation and the Trace column contains the number of residues modelled with at most 2 atoms.

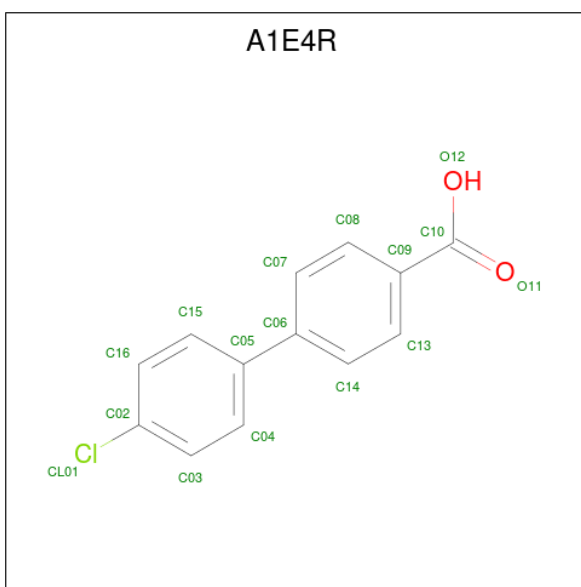
- Molecule 1 is a protein called Phosphoglycerate mutase 1.

Mol	Chain	Residues	Atoms					ZeroOcc	AltConf	Trace
1	B	237	Total	C	N	O	S	0	1	0
			1914	1218	336	354	6			
1	C	240	Total	C	N	O	S	0	0	0
			1933	1229	343	355	6			

There are 16 discrepancies between the modelled and reference sequences:

Chain	Residue	Modelled	Actual	Comment	Reference
B	255	LEU	-	expression tag	UNP P18669
B	256	GLU	-	expression tag	UNP P18669
B	257	HIS	-	expression tag	UNP P18669
B	258	HIS	-	expression tag	UNP P18669
B	259	HIS	-	expression tag	UNP P18669
B	260	HIS	-	expression tag	UNP P18669
B	261	HIS	-	expression tag	UNP P18669
B	262	HIS	-	expression tag	UNP P18669
C	255	LEU	-	expression tag	UNP P18669
C	256	GLU	-	expression tag	UNP P18669
C	257	HIS	-	expression tag	UNP P18669
C	258	HIS	-	expression tag	UNP P18669
C	259	HIS	-	expression tag	UNP P18669
C	260	HIS	-	expression tag	UNP P18669
C	261	HIS	-	expression tag	UNP P18669
C	262	HIS	-	expression tag	UNP P18669

- Molecule 2 is 4-(4-chlorophenyl)benzoic acid (CCD ID: A1E4R) (formula: C<sub>13</sub>H<sub>9</sub>ClO<sub>2</sub>) (labeled as "Ligand of Interest" by depositor).



Mol	Chain	Residues	Atoms					ZeroOcc	AltConf
2	B	1	Total	C	Cl	H	O	0	0
			24	13	1	8	2		
2	C	1	Total	C	Cl	H	O	0	0
			24	13	1	8	2		

- Molecule 3 is GLYCEROL (CCD ID: GOL) (formula:  $C_3H_8O_3$ ).



Mol	Chain	Residues	Atoms				ZeroOcc	AltConf
3	B	1	Total	C	H	O	0	0
			14	3	8	3		
3	B	1	Total	C	H	O	0	0
			14	3	8	3		

*Continued on next page...*

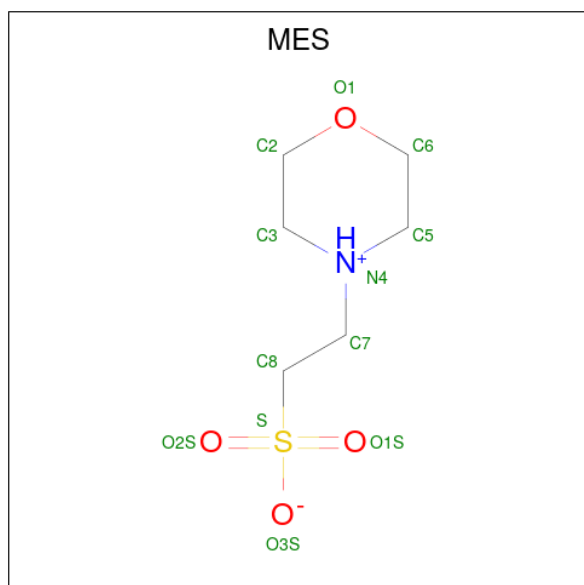
Continued from previous page...

Mol	Chain	Residues	Atoms				ZeroOcc	AltConf
3	B	1	Total	C	H	O	0	0
			14	3	8	3		
3	B	1	Total	C	H	O	0	0
			14	3	8	3		
3	B	1	Total	C	H	O	0	0
			14	3	8	3		
3	B	1	Total	C	H	O	0	0
			14	3	8	3		
3	B	1	Total	C	H	O	0	0
			14	3	8	3		
3	C	1	Total	C	H	O	0	0
			14	3	8	3		
3	C	1	Total	C	H	O	0	0
			14	3	8	3		
3	C	1	Total	C	H	O	0	0
			14	3	8	3		

- Molecule 4 is CHLORIDE ION (CCD ID: CL) (formula: Cl).

Mol	Chain	Residues	Atoms		ZeroOcc	AltConf
4	B	1	Total	Cl	0	0
			1	1		

- Molecule 5 is 2-(N-MORPHOLINO)-ETHANESULFONIC ACID (CCD ID: MES) (formula: C<sub>6</sub>H<sub>13</sub>NO<sub>4</sub>S).



Mol	Chain	Residues	Atoms						ZeroOcc	AltConf
5	C	1	Total	C	H	N	O	S	0	0
			25	6	13	1	4	1		

- Molecule 6 is water.

Mol	Chain	Residues	Atoms		ZeroOcc	AltConf
6	B	96	Total	O	0	0
			96	96		
6	C	71	Total	O	0	0
			71	71		



## 4 Data and refinement statistics

Property	Value	Source
Space group	P 21 21 21	Depositor
Cell constants a, b, c, $\alpha$ , $\beta$ , $\gamma$	82.80Å 83.96Å 103.40Å 90.00° 90.00° 90.00°	Depositor
Resolution (Å)	23.19 – 1.91 23.19 – 1.91	Depositor EDS
% Data completeness (in resolution range)	97.5 (23.19-1.91) 97.5 (23.19-1.91)	Depositor EDS
$R_{merge}$	0.06	Depositor
$R_{sym}$	(Not available)	Depositor
$\langle I/\sigma(I) \rangle$ <sup>1</sup>	1.89 (at 1.92Å)	Xtriage
Refinement program	PHENIX ("2.0_5936": ???)	Depositor
R, $R_{free}$	0.197 , 0.229 (Not available) , 0.225	Depositor DCC
$R_{free}$ test set	2758 reflections (4.89%)	wwPDB-VP
Wilson B-factor (Å <sup>2</sup> )	37.7	Xtriage
Anisotropy	0.315	Xtriage
Bulk solvent $k_{sol}$ (e/Å <sup>3</sup> ), $B_{sol}$ (Å <sup>2</sup> )	0.37 , 35.5	EDS
L-test for twinning <sup>2</sup>	$\langle  L  \rangle = 0.50$ , $\langle L^2 \rangle = 0.33$	Xtriage
Estimated twinning fraction	0.013 for k,h,-l	Xtriage
$F_o, F_c$ correlation	0.96	EDS
Total number of atoms	4228	wwPDB-VP
Average B, all atoms (Å <sup>2</sup> )	42.0	wwPDB-VP

Xtriage's analysis on translational NCS is as follows: *The largest off-origin peak in the Patterson function is 4.26% of the height of the origin peak. No significant pseudotranslation is detected.*

<sup>1</sup>Intensities estimated from amplitudes.

<sup>2</sup>Theoretical values of  $\langle |L| \rangle$ ,  $\langle L^2 \rangle$  for acentric reflections are 0.5, 0.333 respectively for untwinned datasets, and 0.375, 0.2 for perfectly twinned datasets.



## 5 Model quality

### 5.1 Standard geometry

Bond lengths and bond angles in the following residue types are not validated in this section: MES, A1E4R, CL, GOL

The Z score for a bond length (or angle) is the number of standard deviations the observed value is removed from the expected value. A bond length (or angle) with  $|Z| > 5$  is considered an outlier worth inspection. RMSZ is the root-mean-square of all Z scores of the bond lengths (or angles).

Mol	Chain	Bond lengths		Bond angles	
		RMSZ	$\# Z  > 5$	RMSZ	$\# Z  > 5$
1	B	0.35	0/1966	0.53	0/2668
1	C	0.33	0/1982	0.49	0/2688
All	All	0.34	0/3948	0.51	0/5356

There are no bond length outliers.

There are no bond angle outliers.

There are no chirality outliers.

There are no planarity outliers.

### 5.2 Too-close contacts

In the following table, the Non-H and H(model) columns list the number of non-hydrogen atoms and hydrogen atoms in the chain respectively. The H(added) column lists the number of hydrogen atoms added and optimized by MolProbity. The Clashes column lists the number of clashes within the asymmetric unit, whereas Symm-Clashes lists symmetry-related clashes.

Mol	Chain	Non-H	H(model)	H(added)	Clashes	Symm-Clashes
1	B	1914	0	1888	11	0
1	C	1933	0	1913	13	0
2	B	16	8	0	0	0
2	C	16	8	0	0	0
3	B	42	56	56	2	0
3	C	18	24	24	0	0
4	B	1	0	0	0	0
5	C	12	13	13	0	0
6	B	96	0	0	0	0
6	C	71	0	0	0	0
All	All	4119	109	3894	24	0

The all-atom clashscore is defined as the number of clashes found per 1000 atoms (including hydrogen atoms). The all-atom clashscore for this structure is 3.

The worst 5 of 24 close contacts within the same asymmetric unit are listed below, sorted by their clash magnitude.

Atom-1	Atom-2	Interatomic distance (Å)	Clash overlap (Å)
1:B:117:ARG:C	1:B:206:MET:HE1	2.26	0.60
1:C:177:GLU:O	1:C:177:GLU:HG3	2.04	0.58
1:B:203:GLU:CD	1:B:203:GLU:H	2.11	0.57
1:C:113:LYS:HD2	1:C:114:ILE:N	2.24	0.53
1:C:208:LEU:HD12	1:C:209:ASN:N	2.25	0.51

There are no symmetry-related clashes.

## 5.3 Torsion angles [i](#)

### 5.3.1 Protein backbone [i](#)

There are no protein backbone outliers to report in this entry.

### 5.3.2 Protein sidechains [i](#)

In the following table, the Percentiles column shows the percent sidechain outliers of the chain as a percentile score with respect to all X-ray entries followed by that with respect to entries of similar resolution.

The Analysed column shows the number of residues for which the sidechain conformation was analysed, and the total number of residues.

Mol	Chain	Analysed	Rotameric	Outliers	Percentiles	
1	B	203/220 (92%)	201 (99%)	2 (1%)	68	64
1	C	204/220 (93%)	204 (100%)	0	100	100
All	All	407/440 (92%)	405 (100%)	2 (0%)	87	80

All (2) residues with a non-rotameric sidechain are listed below:

Mol	Chain	Res	Type
1	B	147[A]	GLU
1	B	147[B]	GLU

Sometimes sidechains can be flipped to improve hydrogen bonding and reduce clashes. All (5) such

sidechains are listed below:

Mol	Chain	Res	Type
1	B	20	ASN
1	B	107	HIS
1	B	111	GLN
1	B	135	ASN
1	C	107	HIS

### 5.3.3 RNA [i](#)

There are no RNA molecules in this entry.

## 5.4 Non-standard residues in protein, DNA, RNA chains [i](#)

There are no non-standard protein/DNA/RNA residues in this entry.

## 5.5 Carbohydrates [i](#)

There are no oligosaccharides in this entry.

## 5.6 Ligand geometry [i](#)

Of 14 ligands modelled in this entry, 1 is monoatomic - leaving 13 for Mogul analysis.

In the following table, the Counts columns list the number of bonds (or angles) for which Mogul statistics could be retrieved, the number of bonds (or angles) that are observed in the model and the number of bonds (or angles) that are defined in the Chemical Component Dictionary. The Link column lists molecule types, if any, to which the group is linked. The Z score for a bond length (or angle) is the number of standard deviations the observed value is removed from the expected value. A bond length (or angle) with  $|Z| > 2$  is considered an outlier worth inspection. RMSZ is the root-mean-square of all Z scores of the bond lengths (or angles).

Mol	Type	Chain	Res	Link	Bond lengths			Bond angles		
					Counts	RMSZ	$\# Z  > 2$	Counts	RMSZ	$\# Z  > 2$
3	GOL	C	305	-	5,5,5	0.31	0	5,5,5	0.47	0
3	GOL	B	306	-	5,5,5	0.40	0	5,5,5	0.47	0
3	GOL	B	302	-	5,5,5	0.16	0	5,5,5	1.03	0
3	GOL	B	305	-	5,5,5	0.36	0	5,5,5	0.65	0
5	MES	C	302	-	12,12,12	1.21	1 (8%)	15,16,16	2.54	6 (40%)
3	GOL	B	304	-	5,5,5	0.36	0	5,5,5	0.33	0
3	GOL	B	307	-	5,5,5	0.37	0	5,5,5	0.75	0
3	GOL	C	304	-	5,5,5	0.34	0	5,5,5	0.40	0

Mol	Type	Chain	Res	Link	Bond lengths			Bond angles		
					Counts	RMSZ	# Z  > 2	Counts	RMSZ	# Z  > 2
3	GOL	B	303	-	5,5,5	0.37	0	5,5,5	0.52	0
2	A1E4R	C	301	-	17,17,17	0.98	0	23,23,23	1.27	3 (13%)
3	GOL	B	308	-	5,5,5	0.38	0	5,5,5	0.60	0
3	GOL	C	303	-	5,5,5	0.22	0	5,5,5	0.80	0
2	A1E4R	B	301	-	17,17,17	0.89	0	23,23,23	1.06	1 (4%)

In the following table, the Chirals column lists the number of chiral outliers, the number of chiral centers analysed, the number of these observed in the model and the number defined in the Chemical Component Dictionary. Similar counts are reported in the Torsion and Rings columns. '-' means no outliers of that kind were identified.

Mol	Type	Chain	Res	Link	Chirals	Torsions	Rings
3	GOL	C	305	-	-	2/4/4/4	-
3	GOL	B	306	-	-	4/4/4/4	-
3	GOL	B	302	-	-	2/4/4/4	-
3	GOL	B	305	-	-	4/4/4/4	-
5	MES	C	302	-	-	0/6/14/14	0/1/1/1
3	GOL	B	304	-	-	1/4/4/4	-
3	GOL	B	307	-	-	4/4/4/4	-
3	GOL	C	304	-	-	0/4/4/4	-
3	GOL	B	303	-	-	3/4/4/4	-
2	A1E4R	C	301	-	-	4/8/8/8	0/2/2/2
3	GOL	B	308	-	-	0/4/4/4	-
3	GOL	C	303	-	-	4/4/4/4	-
2	A1E4R	B	301	-	-	0/8/8/8	0/2/2/2

All (1) bond length outliers are listed below:

Mol	Chain	Res	Type	Atoms	Z	Observed(Å)	Ideal(Å)
5	C	302	MES	C8-S	3.31	1.82	1.77

The worst 5 of 10 bond angle outliers are listed below:

Mol	Chain	Res	Type	Atoms	Z	Observed(°)	Ideal(°)
5	C	302	MES	C2-C3-N4	-5.48	101.78	110.12
5	C	302	MES	C6-C5-N4	5.32	118.21	110.12
5	C	302	MES	C7-N4-C3	3.24	119.86	111.24
5	C	302	MES	O2S-S-C8	-2.74	102.59	106.73
2	C	301	A1E4R	C04-C05-C06	-2.66	116.67	121.25

There are no chirality outliers.

5 of 28 torsion outliers are listed below:

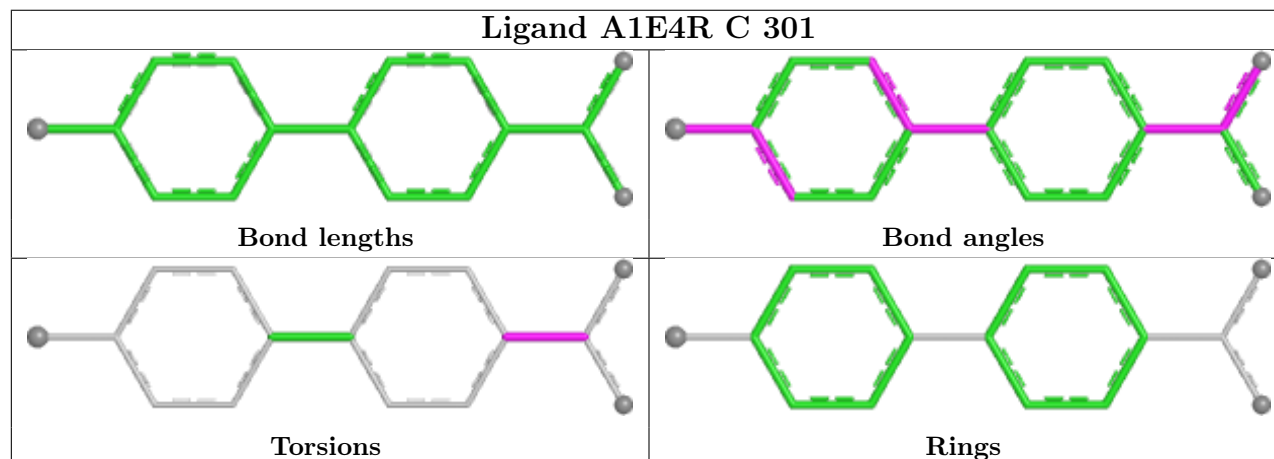
Mol	Chain	Res	Type	Atoms
3	B	302	GOL	C1-C2-C3-O3
3	B	303	GOL	O1-C1-C2-C3
3	B	305	GOL	C1-C2-C3-O3
3	B	306	GOL	O1-C1-C2-C3
3	B	306	GOL	C1-C2-C3-O3

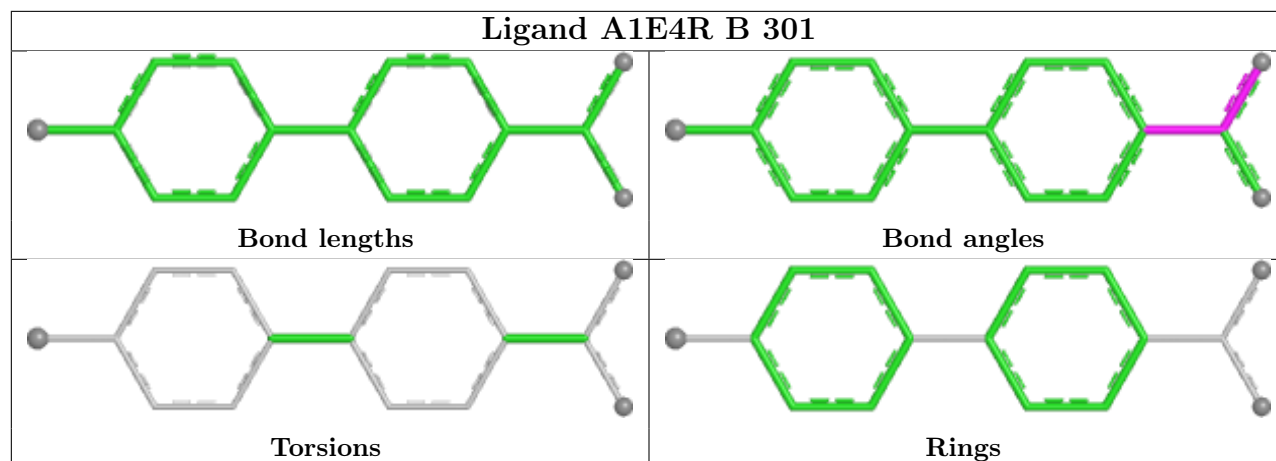
There are no ring outliers.

2 monomers are involved in 2 short contacts:

Mol	Chain	Res	Type	Clashes	Symm-Clashes
3	B	304	GOL	1	0
3	B	308	GOL	1	0

The following is a two-dimensional graphical depiction of Mogul quality analysis of bond lengths, bond angles, torsion angles, and ring geometry for all instances of the Ligand of Interest. In addition, ligands with molecular weight > 250 and outliers as shown on the validation Tables will also be included. For torsion angles, if less than 5% of the Mogul distribution of torsion angles is within 10 degrees of the torsion angle in question, then that torsion angle is considered an outlier. Any bond that is central to one or more torsion angles identified as an outlier by Mogul will be highlighted in the graph. For rings, the root-mean-square deviation (RMSD) between the ring in question and similar rings identified by Mogul is calculated over all ring torsion angles. If the average RMSD is greater than 60 degrees and the minimal RMSD between the ring in question and any Mogul-identified rings is also greater than 60 degrees, then that ring is considered an outlier. The outliers are highlighted in purple. The color gray indicates Mogul did not find sufficient equivalents in the CSD to analyse the geometry.





## 5.7 Other polymers [i](#)

There are no such residues in this entry.

## 5.8 Polymer linkage issues [i](#)

There are no chain breaks in this entry.

## 6 Fit of model and data [i](#)

### 6.1 Protein, DNA and RNA chains [i](#)

In the following table, the column labelled ‘#RSRZ > 2’ contains the number (and percentage) of RSRZ outliers, followed by percent RSRZ outliers for the chain as percentile scores relative to all X-ray entries and entries of similar resolution. The OWAB column contains the minimum, median, 95<sup>th</sup> percentile and maximum values of the occupancy-weighted average B-factor per residue. The column labelled ‘Q < 0.9’ lists the number of (and percentage) of residues with an average occupancy less than 0.9.

Mol	Chain	Analysed	<RSRZ>	#RSRZ>2	OWAB(Å <sup>2</sup> )	Q<0.9
1	B	237/262 (90%)	0.24	9 (3%) 44 49	27, 38, 59, 89	1 (0%)
1	C	240/262 (91%)	0.25	8 (3%) 49 54	28, 41, 63, 90	0
All	All	477/524 (91%)	0.25	17 (3%) 46 51	27, 39, 62, 90	1 (0%)

The worst 5 of 17 RSRZ outliers are listed below:

Mol	Chain	Res	Type	RSRZ
1	B	3	ALA	4.0
1	C	241	LYS	3.6
1	B	237	GLU	3.4
1	B	239	VAL	3.3
1	B	238	THR	3.1

### 6.2 Non-standard residues in protein, DNA, RNA chains [i](#)

There are no non-standard protein/DNA/RNA residues in this entry.

### 6.3 Carbohydrates [i](#)

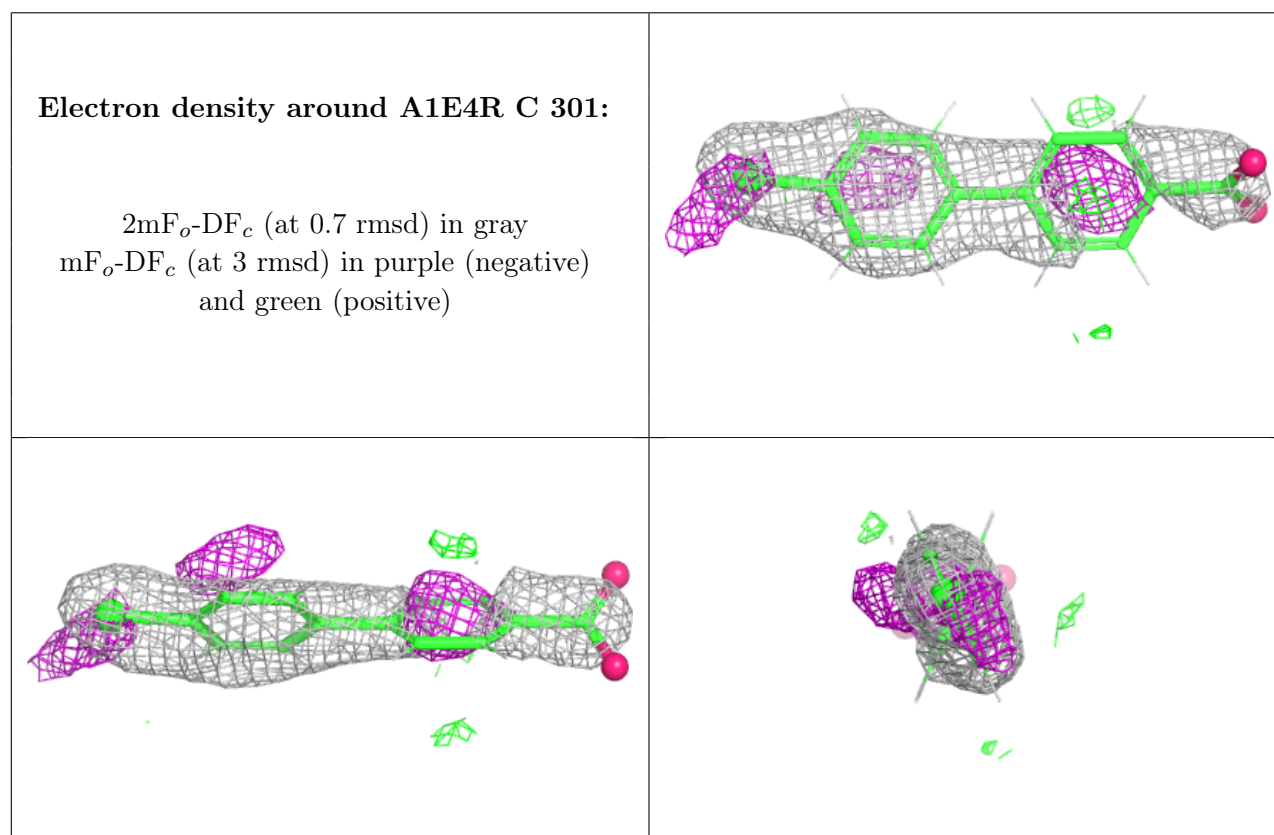
There are no oligosaccharides in this entry.

### 6.4 Ligands [i](#)

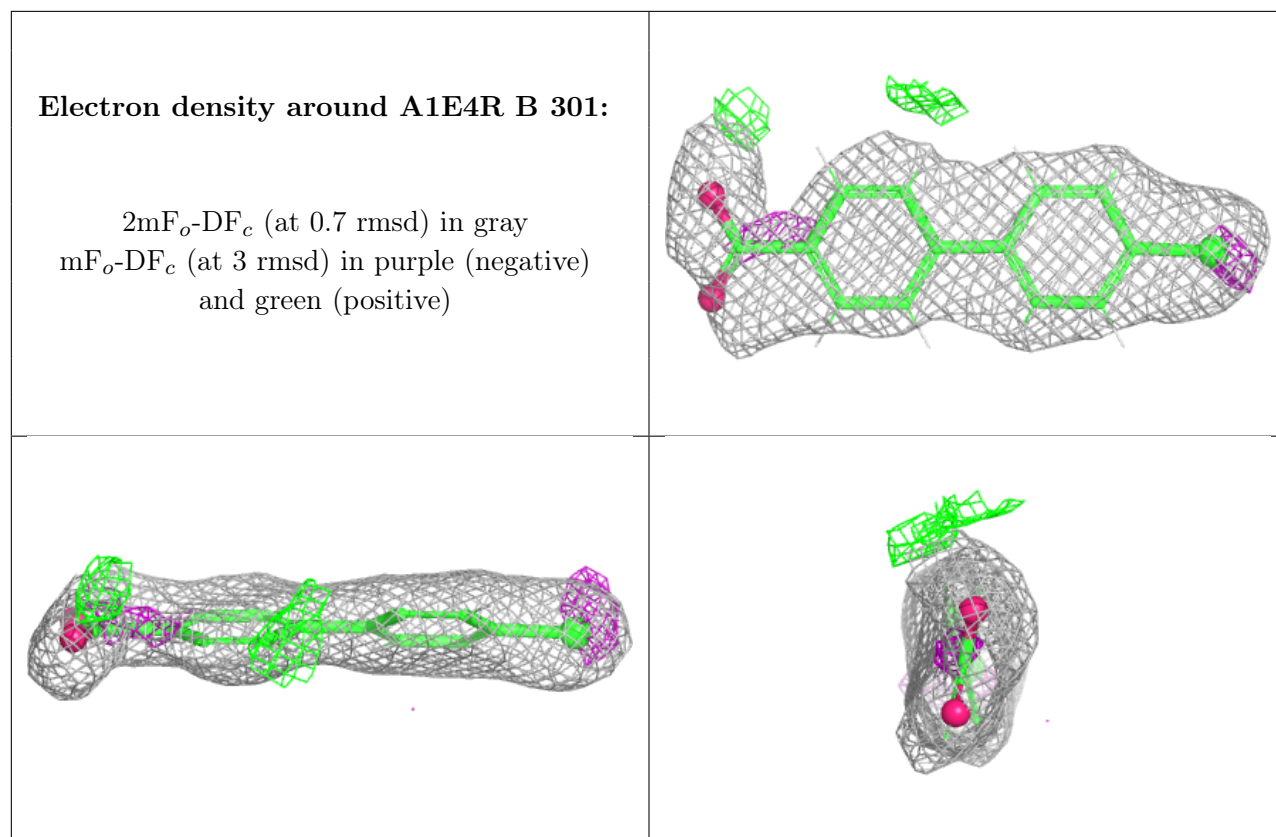
In the following table, the Atoms column lists the number of modelled atoms in the group and the number defined in the chemical component dictionary. The B-factors column lists the minimum, median, 95<sup>th</sup> percentile and maximum values of B factors of atoms in the group. The column labelled ‘Q < 0.9’ lists the number of atoms with occupancy less than 0.9.

Mol	Type	Chain	Res	Atoms	RSCC	RSR	B-factors( $\text{\AA}^2$ )	Q<0.9
3	GOL	C	305	6/6	0.74	0.15	47,56,64,68	0
3	GOL	B	306	6/6	0.77	0.14	45,63,78,89	0
3	GOL	B	304	6/6	0.78	0.14	41,57,67,69	0
2	A1E4R	C	301	16/16	0.81	0.16	58,74,89,96	0
3	GOL	B	307	6/6	0.82	0.12	49,59,64,72	0
3	GOL	B	303	6/6	0.82	0.12	46,57,63,68	0
3	GOL	C	304	6/6	0.85	0.10	43,51,55,56	0
3	GOL	B	305	6/6	0.85	0.12	44,60,65,73	0
3	GOL	B	308	6/6	0.86	0.10	48,57,64,67	0
3	GOL	C	303	6/6	0.87	0.12	37,55,65,66	0
3	GOL	B	302	6/6	0.89	0.10	43,52,58,61	0
2	A1E4R	B	301	16/16	0.91	0.11	40,54,73,75	0
5	MES	C	302	12/12	0.91	0.14	44,75,92,94	0
4	CL	B	309	1/1	1.00	0.02	32,32,32,32	0

The following is a graphical depiction of the model fit to experimental electron density of all instances of the Ligand of Interest. In addition, ligands with molecular weight > 250 and outliers as shown on the geometry validation Tables will also be included. Each fit is shown from different orientation to approximate a three-dimensional view.







## 6.5 Other polymers [i](#)

There are no such residues in this entry.